

Submit items for The Daily  
to Erika Orchard, editor, ext.  
224 or first floor, Administration.

# Thursday

October 1, 1970

...and he says business is up 15%...

FEEDING SOME 6,000 MOUTHS in three separate serving areas seemingly takes the magic of a merlin. Luckily LCC has a MERLIN (AMES) as head of its Food Service.

Talking to our Food Service director who also heads the Food Technology training program and supervises the College Restaurant, you have to be a little overwhelmed by his calmness and impressed by his desire to provide top quality food and service.

He credits his staff of 24 full-time persons, six part-time, and six work-study students for helping make it possible to offer an impressive menu which includes everything from a complete steak dinner to a hamburger.

Merlin noted this week that business is up about 15%. This has caused a squeeze on dining area seating. The Food Service director said he and his staff really appreciate persons who leave after finishing their meals because this enables the dining room staff to serve more people quicker. Some relief is expected soon as a snack bar will be opened in the student lounge area on the fourth floor of the Center Bldg.

FOOD SERVICE HOURS:	Snack Bar	8 a.m. - 10 p.m.
	Cafeteria	8 a.m. - 4 p.m.
	College Restaurant	7 a.m. - 3 p.m.

\*\*\*\*\*

THE FORM OF THE INTERIM ACCREDITATION REPORT will be altered to preface each department's comments with the original question posed by the accreditation team.

This change was suggested by the College Cabinet. Members felt including the questions would enhance the value of the report and make it more concise.

WENDY WESTFALL at the Information Desk in the Administration Bldg. is collecting dues from Classified Staffers for the Staff Association and OCCA. Those wishing to join one or both organizations should pay:

\$5.00 Staff Assoc.

\$1.00 OCCA

You may pay Wendy directly or fill out a payroll deduction authorization to have the amount taken from your October check.

PAT LOHN, our evening switchboard gal, asks that each new staffer stop by her post to check if his name and telephone extension are listed in the switchboard directory.



"WORST CASE OF STAGE FRIGHT  
WE'VE EVER SEEN!"

THANKS TO BILL MANSELL FOR THE  
CARTOON"



YOU MAY NOT BE COVERED: Archie Zarewski, LCC group health insurance representative, reports that some staff people have not completed the medical and dental insurance registration forms and therefore are not eligible for LCC's coverage. Any staff member who is unsure if he has completed the forms should check with MARJORIE MCGILL, insurance clerk, in the Business Office immediately.

SEASON-TICKET MEMBERSHIPS in the Eugene-University Music Association are available from several staff members. The cost of the five and possibly six concert season is \$8 for adults and \$4 for students. Memberships may be purchased from: NATHAN CAMMACK, ext.318; JEAN SPECHT, 351; MABEL KENNEDY, 236; PAT GREEN, 271; FLORENCE HEDDEN, 328; ROSA MARKS, 355; HELEN LOOMIS, 253; and JOLENE BOWERS, 348. THE DRIVE ENDS SATURDAY.

SATURDAY, OCT. 3 is the voter registration deadline.

IF...

...you are now of legal voting age and have not previously registered...

OR

...have recently married...

OR

..have moved from your registered address...

SEE

VENICE NICE, Food Service, or PEGGY WAKEFIELD, Student Activities. They can help you register.

SIX PICTURES of LCC students and instructors at work are featured in the October edition of EDUGRAM, the Oregon Board of Education's monthly publication. Two of the photos make up the front cover of the bulletin, with the other four located at the top and bottom corners of an article entitled, "Community College Master Plan Stresses Educational Opportunity." Copies are available at the President's Office.

THE BUNDLE IS COMING: Last month, when JAN JOHN, Marston Morgan's former secretary, stopped by I&P Director Larry Romine's office to say good-bye before moving to Medford, he teasingly told her to call him collect when she learned a "little one" was on its way. Since she was often teased about wanting to have a baby, Jan laughed and promised Larry would be one of the first to know.

WELL--he didn't have to wait long... the collect call charged to his home phone came yesterday and a very excited Jan announced the John's new arrival is due April 24.



Submit items for The Daily to  
Erika Orchard, editor, ext. 224  
or first floor, Administration.

# Friday

October 2, 1970

**TURN IN CLASS CARDS:** By the end of the day, all instructors should have returned to the Registrar's Office class cards of students who have not been in class during the first week of the term. Unless a student has made prior arrangements for his absence, it will be assumed that he no longer wishes to take the class and his place will be made available to someone waiting to enroll. This new registration policy was established during the summer.

**LOOKING AHEAD:** The committee studying the development of a new 10 year long-range plan for LCC facilities and services held its first meeting yesterday. Co-chairman Marston Morgan was designated to conduct a study comparing the projections of the original LCC long-range plan with what has actually occurred. This will provide a "jumping off point" for the new study, Dr. Schafer commented.

GOOD LUCK  
TO  
OUR  
HUNTERS!



**HEALTH INSURANCE:** In response to Business Manager Bill Watkins' request for clarification of the health insurance deductible as it pertains to the \$150 family allowance, Equitable Life Assurance Co. has advised that although "the deductible amount for any calendar year will be \$50 per individual or \$150 per family unit, and no one family member may satisfy more than \$50 of the \$150 deductible" several members of a family may satisfy less than \$50 each.

**FOR INSTANCE:** the husband has reached his \$50 deductible and is now receiving the 80% benefit; his wife has also reached the \$50 deductible and is receiving the 80% benefit. Medical bills for one child have satisfied another \$40 of the family deductible when a second child incurs a medical bill of \$85. The first \$10 of THAT bill will satisfy the \$150 family deductible and the remaining \$75 will be under the 80% benefit--as will all further claims for the family for the remainder of the calendar year.

(WOW--Have you absorbed all that? Still confused? If so, Bill will be glad to go over the provisions with you.)

**SPEAKING OF BILL WATKINS--**  
he along with FLOYD WILKES,  
data processing whizz, and  
ace accountant HANK DOUDA  
are spending long hours  
developing guidelines for  
preparing the 1971-72  
college budget.

\$  
\$"Budget: a mathematical \$  
\$confirmation of your sus-\$  
\$picions." \$  
\$

**LAST CHANCE TO REGISTER:** Tomorrow  
is the deadline for voter registra-  
tion. If you've been meaning to  
take care of this responsibility  
but keep forgetting, why not  
take a few minutes today to contact  
VENICE NICE, Food Service, PEGGY  
WAKEFIELD, Student Activities  
office, or the gal at the Infor-  
mation desk in the Center Bldg.  
Any of these people will be glad  
to provide you with the proper  
registration forms.





THERE  
MUST  
BE  
AT  
LEAST  
12  
MORE  
PERSONS  
ON  
OUR  
STAFF  
WHO  
COULD  
USE  
A  
SHOT  
---  
A  
FLU  
SHOT,  
THAT  
IS.

88  
STAFFERS  
HAVE  
SIGNED  
UP  
--  
12  
MORE  
ARE  
NEEDED  
BEFORE  
THE  
SHOTS  
CAN  
BE  
OFFERED  
THROUGH  
THE  
HEALTH  
SERVICE  
---  
GET  
THE  
POINT?!

INSTRUCTIONAL COUNCIL: If yesterday's Instructional Council meeting is any indication, the group of department chairmen, directors, and administrators have a busy year ahead.

The Council's first official meeting of the year was taken up with committee reports and discussion of administrative items. Consequently, time ran out before old and new business items could be brought up.

The members heard brief reports from various departments on campus:

- \* Dean Case informed members that 14 doctoral fellows connected with a three-year program at OSU are willing to come to LCC one day a week to work on special projects--primarily in vocational areas. Departments interested in learning more about these people and the services they could provide should contact one of the associate deans.
- \* A team of FAA officials has completed its visit and review of the Aviation Technology program, Mel Gaskill, Mechanics Dept. chairman related. The examiners will be preparing an evaluation report. LCC's program is the second in the nation to undergo the team certification approach.
- \* The Associate Degree Nursing program now has full state accreditation, Mary Fiorentino, Nursing Department chairman, said.
- \* Director of the Library Keith Harker sought reactions to his proposal to close the library at 8 p.m.--one hour earlier. He said that very few students use the facility during the evening hours and most who do, check references out rather than using them in the library. A straw vote showed the Council opposing the early closure 10-9. Harker will make the final decision and is also studying the feasibility of continuing the 10 a.m. to 2 p.m. Saturday hours.
- \* Karen Lansdowne told the Council that LCC Directors will be sent copies of the Interim Accreditation Report rough draft so they can be informed of department concerns. The report is also being re-edited to include the questions posed by the accreditation team and to cut out parts that do not directly relate to the questions. After the final editing is completed, departments will have an opportunity to review their sections again.

OAKRIDGE SPEAKER: Jill Heilpern, coordinator of the Child Development program, shared her knowledge about pre-school education and setting up a cooperative pre-school program with interested Oakridge citizens during her talk in the community Wednesday evening.

FRED SACKETT, assistant professor of health and physical education, is the new Titan head baseball coach. He succeeds Irv Roth who moved to head coach for basketball when former hoop coach Mel Krause was hired to head the U of O baseball program.

SECRETARIES NEEDED: The Adult Education office has a Secretary II and Secretary III opening. Interested persons should contact Virginia Roles, Adult Ed. supervisor, ext. 323.

LCC's CROSS-COUNTY squad will try for its second straight win tomorrow, hosting a four-way meet at 11 a.m. The Titans, who won their season opener last week, will run against teams from SWOCC, Umpqua, and Clatsop community colleges.



Submit items for The Daily to  
Erika Orchard, editor, ext. 224  
or first floor, Administration.

# Monday

October 5, 1970

FUNDS AVAILABLE: During his recent trip to Washington, D.C., Dick Eymann, government funding specialist, investigated areas where funds for education may be available during the coming year. His findings are summarized below:

## OFFICE OF EDUCATION

1. For improving vocational education curriculum and instruction  
\$20 million may be available for improving the quality of vocational instructors and curriculum. Funds may be distributed through the state departments of education or granted directly to institutions. Funds must be committed by June 30, 1971.
2. For disadvantaged and handicapped  
Proposals for curriculum development in training the disadvantaged are sought. Guidelines for submitting proposals will be out by Dec. 1 and proposals should be ready by Dec. 31.

## BUREAU OF INDIAN AFFAIRS

1. Indian students wishing to enroll in an occupational program may apply through the college and through the regional office of the Bureau. The drawback is that if the student later decides to transfer into a college transfer program, he is no longer eligible for this particular aid program and must reapply for financial assistance.

## PUBLIC HEALTH SERVICE

1. No money available for new construction
2. ADN financial aid: doubling of grant money but no additional funds for loans
3. Allied Health programs (dental hygiene, inhalation therapy) will receive funds. Support also available for expanding into other allied health fields.

## NATIONAL SCIENCE FOUNDATION

1. Funds for equipment dried up.

\*\*\*\*\*

LCC SPEAKERS BUREAU needs speakers on hobbies or avocational subjects, as well as college programs. Last week's call for volunteers didn't mention this option. The Information & Publications Department is preparing a roster for distribution to several hundred organizations.

FACULTY IDENTIFICATION CARDS are available from Dean Case's office. These are used mainly for checking out materials from the U of O Library.

THE CURRICULUM COMMITTEE meets Tuesday at 4 p.m. in the Board Room.

SECRETARY I AND III positions are open in the Adult Education office. Interested persons should contact Virginia Roles, ext. 323.

PLACEMENT DIRECTOR BUCK BAILEY and his wife will be in Vancouver, B.C. this week, attending the Pacific Northwest Personnel Management Association meeting. Last week, Buck was the featured speaker on occupational education at Roosevelt Junior High in Eugene.

MARGARET DAVIS has moved from her secretarial post in Adult Education to the new position as secretary for Flight Technology and the EPDA project.

LCC CLAIMED ITS SECOND cross-country victory of the season Saturday, defeating SWOCC 21-43. The host Titans took second through fifth places to win the three-mile meet.

"DO THE NEW LONG SKIRTS MAKE A WOMAN'S FEET LOOK BIG, OR IS IT  
JUST THAT THIS IS THE FIRST TIME IN SEVERAL YEARS THAT ANYONE HAS  
LOOKED AT A WOMAN'S FEET?      --Poor Woman's Almanac





# Tuesday

October 6, 1970

Submit items for The Daily to Erika Orchard, editor, ext. 224 or first floor, Adm. (caricature of the editor compliments of Bill Mansell)

\*\*\*\*\*  
 \*Heading into their 31st year \*  
 \*of marriage, Verna Jensen, \*  
 \*secretary in the Business Office\*  
 \*and her husband Harold have a \*  
 \*lot to be proud of--starting \*  
 \*with their five sons--four of \*  
 \*whom have received Eagle badges,\*  
 \*scouting's highest honor. \*  
 \*\*\*\*\*

A STAFF-STUDENT Human Relations Committee is being established at LCC, with the membership expected to be announced this week. A group of interested persons have been working with Dr. Schafer to organize the new committee and have recommended that it deal with seven main concerns:

- 1/ Intra-campus communications
- 2/ Continuous evaluation of current and/or proposed programs for minorities and disadvantaged
- 3/ Staff training for working with minorities and disadvantaged
- 4/ Recruitment, supportive services and placement
- 5/ Community relations--reaching out to minorities
- 6/ Development and coordination of off-campus resources for minorities and disadvantaged.
- 7/ Serve as sounding board for grievances; help initiate grievance procedures

The group has also recommended that an Office of Human Relations be established at the administrative level at the earliest possible date, no later than the next fiscal year.

## COMMITTEE MEETING REMINDERS

### Curriculum Committee

Board Room--4 p.m.

### Public Relations

### Advisory Committee

Forum 314/15--4 p.m.

### Personnel Evaluation Comm.

LRC Confab. Rm.--4 p.m.

TOM LICHTY, KLCC-FM program director, is in Denver today, attending an affiliates meeting of the new National Public Radio Network (NPR). The college station became a member of the new network when it qualified for financial assistance from the Corporation for Public Broadcasting earlier this year. NPR is an outgrowth of the Corporation's efforts to improve radio communications and expand educational programming. As the nation's fifth live radio network, NPR will join CBS, ABC, NBC, and Mutual.

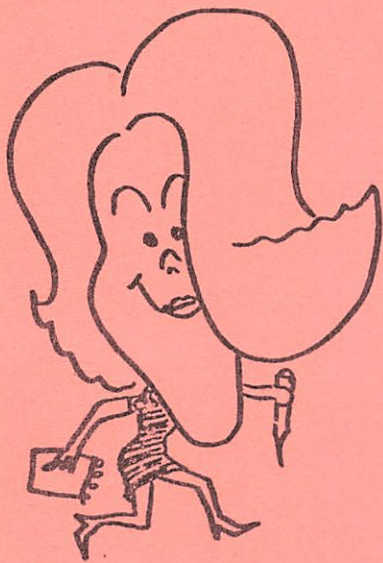
Expecting to receive from \$7,500 to \$10,000 from the Corporation, KLCC-FM has begun its new season with an expanded schedule and work toward converting to stereo sound nearly completed. The station broadcasts at 90.3 megacycles and is on the air weekdays from 8 a.m. to midnight, 4 p.m. to midnight Saturday, and 5 p.m. to midnight Sunday. The stereo equipment is being built by the LCC Electronics Department and is expected to be ready by the end of the calendar year.

CHARTER FLIGHTS: The OCCA has worked out a schedule of charter flights to Europe which are being offered to students, staff and their immediate families. The charters are being arranged through Charters West of Portland and leave from the Portland International Airport. These trips are planned:

Dec. 19, 1970	- Jan. 3, 1971	to London	\$239.00	16 days
June 13, 1971	- Aug. 28, 1971	to London	\$263.00	11 weeks
June 15, 1971	- Sept. 10, 1971	to London	\$263.00	12 weeks
June 18, 1971	- July 14, 1971	to London	\$263.00	3½ weeks
Aug. 1, 1971	- Aug. 30, 1971	to London	\$263.00	4½ weeks
Sept. 15, 1971	ONE WAY	to London	\$135.00	

For additional information, contact Charters West, 310 Corbett Bldg., Portland, Oregon 97204





# Wednesday

October 7, 1970

Submit items for The Daily to Erika Orchard, editor, ext. 224 or first floor, ADM.

\*\*\*\*\*

THANKS to PAULINE OLSON, secretary-researcher in the Office of Institutional Research and Planning, were expressed yesterday by Dr. Schafer. Pauline spent many hours of "brain and finger" work on the Accreditation Report.

THE INSTRUCTIONAL COUNCIL will meet THURSDAY at 9 a.m. in the Board Rm.

**CRAFT SALES:** The question of permitting the sale of craft items on campus was brought to the College Cabinet's attention yesterday by Student Body President Warren Coverdell.

He explained that guidelines for allowing this type of activity were formulated last Spring and that support for such sales was received from the Eugene Chamber of Commerce which saw no objections coming from local merchants.

The guidelines stipulated that:

1. Merchants allowed to sell craft items on campus would be restricted to those who are LCC students or their spouses.
2. Merchandise would be judged saleable by the dean of students and the student body president, with final approval from the college president.
3. Merchants would be responsible for keeping their sale area clean.

Coverdell said considerable objections have been raised to restricting merchant rights to students and their spouses.

Cabinet members voiced concern that ground rules and consistent policies governing such activities need to be established. A committee composed of Dean of Students Jack Carter, Business Manager Bill Watkins, and Coverdell was asked to further study the proposal to determine:

1. If such sales should be restricted to certain individuals and to a specified location.
2. If the college should receive a commission from the sales.
3. The legal implications of using public land for private gain.
4. Possible cooperation with the Bookstore.

The committee will report its recommendations to the Cabinet next Tuesday.

**CLASSIFIED HOLIDAYS:** A request by the classified staff for additional days off at Thanksgiving and Christmas will be considered by the LCC Board at its Oct. 14 meeting. The Classified Section of the Staff Association is asking for these holidays:

1. Friday after Thanksgiving
2. The day before and the day after Christmas. If Christmas falls on Wednesday, classified staffers would have Thursday and Friday as holidays. Since Christmas falls on a Friday this year, Thursday, Dec. 24, would be considered a classified staff holiday.

**LCC NEWSCAST:** Mike Hopkinson reports that starting tonight, 15-minute LCC newscasts will be seen Wednesday and Friday evenings at 10:30 on PL3-TV (Cable 10). These newscasts will be produced by second-year television broadcasting students and will include general news, features and sports stories from the campus.

**100% SUPPORT:** Mel Gaskill's Mechanics Dept. and Merlin Ames Food Service people deserve congratulations on their 100% participation in the United Appeal Drive.

**HELP FOR HELEN?** Most of us acknowledge that the college president faces a number of pressures. But have we forgotten his secretary? Poor Helen--just yesterday afternoon, she was sitting at her desk with a cup of coffee in each hand--calmly sipping away!



# Thursday

October 8, 1970

## SECTION MEETINGS: TODAY

### Classified Section

4:30 p.m. - 309 Forum

### Faculty Section

4:00 p.m. - 311 Forum

THE WORD IS OUT--STRAIGHT FROM THE DEAN:

"Introduction to Frisbee Flying" WILL NOT be offered at LCC this year. So learned a caller to Dean Case's office. (off the record--the Dean admitted afterwards that he couldn't see why it wouldn't be an interesting P.E. activity. Cecil Hodges, Health and P.E. Dept. chairman, couldn't be reached for comment!)

\*\*\*\*\*

"HERE IT COMES!"



Submit items for The Daily to Erika Orchard, editor, ext. 224 or first floor, Adm.

\*\*\*\*\*

**COPYRIGHT PROCEDURES:** An ad hoc committee chaired by Keith Harker, director of the library, is studying copyright procedures as they would apply to faculty members' publications. The group may also investigate appropriate procedures governing such staff productions as dial-retrieval study materials.

**SPEAKING OF PUBLICATIONS--**If you've caught PAUL ARMSTRONG, assistant professor of language arts, daydreaming lately, chances are he was thinking about his book, THE FLIPSIDE OF PAUL ARMSTRONG, which should be off the press in time for Christmas gift buying. It includes Paul's favorite poems.

**A REMINDER FROM PAT GRANT:** All departments and offices are reminded to send to the Purchasing Office TODAY a requisition listing the brand, model and serial number of all office typewriters, calculators, and adders. These machines will be put on maintenance agreements.

**HERB PRUETT**, assistant professor of mechanics, will be in Portland Friday and Saturday, attending the Oregon Industrial Education Association's fall conference. Herb was recently elected president of the Association's Trade and Industrial Section and edits the OIEA-T&I Newsletter.

**COMMUNITY COLLEGES POPULAR:** As predicted, Fall Term enrollment in Oregon community colleges is up--about one-third higher than last year. LCC's last official count stood at 5,675, compared to 4,500 students the same time a year ago. For all 12 community colleges in the state, an enrollment count taken by the State Department of Education showed 39,334 students registered for the term--a gain of almost 10,000 over the 29,923 reported after the first week of classes last year.

**LYLE SWETLAND**, who is heading up the educational section of the United Appeal Drive, reminds us that contributions can be designated to go to one or more of the 45 agencies aided by United Appeal.

"Can you imagine not being able to do simple fractions?" This comment was made by Mrs. Verda Harvey earlier this week as she expressed her gratitude for the help she received from LCC's Adult Basic Education program and particularly her teacher FERN MUNDELL. By attending ABE classes, Mrs. Harvey, her two married daughters, and two sisters all were able to earn their GED's.





# Friday

October 9, 1970

\*\*\*\*\*  
\* Ray Whitlow, a U of O law student, \*  
\* received a call in reply to his \*  
\* newspaper ad seeking a roommate. \*  
\* "Do you have a preference in room- \*  
\* mates?" the caller inquired. \*  
\* "What do you mean?" Ray asked. \*  
\* The caller explained. \*  
\* Ray thanked the young lady but in- \*  
\* formed her he had already found a \*  
\* roommate. \*  
\*\*\*\*\*

THE STAFF LOUNGE in the Center Bldg. is open to staff members again after being used for registration during the past weeks.

HELP IS AVAILABLE for those grumblings heard in early morning classes". Starting MONDAY, students and faculty members who have 7 a.m. classes can pick up some juice, coffee and sweet rolls at the Snack Bar. ON A TRIAL BASIS, the area will be opened at 6:30 a.m. as a service to staff and students.

The stomachs arriving on campus after 7 a.m. are even more fortunate. Open at that time is the COLLEGE RESTAURANT which features a complete breakfast menu, reasonable prices, and nice-to-talk-to-in-the-morning waitresses.

Submit items for The Daily to Erika Orchard, editor, ext. 224 or first floor, ADM.  
\*\*\*\*\*

Dr. Raymond J. Needham, dean of instruction at Green River Community College in Auburn, Wash., has been chosen to succeed Dr. Schafer as head of Linn-Benton Community College

\*\*\*\*\*

## 13,000 population projected

### PROPOSED DEVELOPMENT OF LCC AREA STIRS CONTROVERSY

A conflict of interests may be developing between the college and a group of staff members interested in investing in land west of the campus.

The two acres in question are part of 1,850 adjacent to and surrounding the campus held by a group of land owners who are asking the Lane County Planning Commission to rezone the property from an agricultural to a commercial-residential district. The owners plan to develop the area into business and neighborhood dwellings which would eventually draw an estimated 13,000 population.

Since such a development would have definite implications on LCC, the Planning Commission has asked the college administration to submit a statement outlining its position on the proposed rezoning. If the official statement should indicate that LCC is opposed to the development or at least raises some sharp objections, then the staff group's involvement in the land ownership and development raises the question of inconsistencies in the college's position on the matter.

Discussion leading to the college's position statement will take place through the 10-year long-range planning committee headed by Dr. Schafer and Marston Morgan. This group is seeking staff opinions on the proposal. For this reason, some background information on the development is needed.

The site on which LCC is located was once held by this group of land owners. At the time they donated 100 acres to the college, the acreage was valued at \$200-\$500 an



acre, mainly because the water in the area was arsenic prone and the soil good only for agricultural purposes. With the growth of the college and the subsequent investment by the county of some \$5 million in public facilities and access routes, the value rose to today's figures of \$4,000-\$5,000 an acre up to \$9,000. The land offered to the staff group is priced at \$5,000 an acre.

The developers have proposed a number of uses for the property, including: apartments, shopping center, professional offices, tavern, restaurants, theater, and golf course.

---

STAFF MEMBERS WISHING TO VOICE THEIR FEELINGS ON THIS  
ISSUE ARE INVITED TO SUBMIT A STATEMENT TO THE DAILY

---

So far, the professional staff of the Planning Commission has opposed any development in this area. Following a study of the rezoning request, the staff issued a report saying that such potential development should be viewed in relationship to its overall impact on the growth and development of the metropolitan area and in line with Eugene's 1990 Plan which sets guidelines for area expansion. Among the concerns expressed by the staff and also voiced by LCC people are:

1. The proposed commercial-residential district will not generate additional development and jobs to the metropolitan area but only redirects it from other locales. Fear has been expressed that unnecessary costs will be incurred by the public if population is drawn from areas where public investments have already been made to accommodate future growth. Also, land in the central area will be abandoned while growth in the newer areas is encouraged.
2. Traffic congestion would increase along access routes now used primarily by LCC students and staff.
3. Due to expected high development costs, the rent on apartments proposed is also expected to be high and in many cases prohibitive for students likely to seek such housing.
4. Expansion of such public services as police and fire protection and educational, recreational, and power facilities would be required.

Several staff members have expressed concern about the ecological and biological implications the development will create. Marston Morgan, director of institutional research and planning, has been a vocal opponent of the rezoning. He reiterates the Planning Commission's concern with the effects of drawing people out of the central area of the community--particularly drawing those who can afford to buy the property and leaving the inner core to lower income families. On a smaller scale, this parallels what has happened in larger metropolitan areas where inner ghettos have developed, he feels.

Morgan conceded that, in his opinion, it is probably unlikely that the college can actually stop the development, but that it could be influential in qualifying the type of development allowed.

It is not known when the rezoning question will come before the Planning Commission again. The group of land owners has withdrawn its original request for rezoning a portion of the property and received permission to submit a privately prepared report on the proposed development. Lee Miller of the Planning Commission said he hasn't heard from the group and doesn't expect the matter to come before the commission in the near future.

Meanwhile, the LCC staff group is planning to form a corporation to sell shares of the two acres at \$100 each. They have discussed building two condominium structures which would include facilities for a faculty club. Karen Lansdowne has asked that those who have expressed interest in this investment contact her as soon as possible.

The task facing LCC seems to be two-fold: to establish the college's official position on the proposed rezoning and development; and at the same time, to make it very clearly understood that regardless of LCC's official position on the matter, acquisition of part of the land in question by staff members is strictly an individual, private matter--and not a college organized investment venture.



# Monday

October 12, 1970

## AN EXECUTIVE NOTICE

I know you believe  
You understand what you think  
I said,  
But I am not sure you realize  
that  
What you heard is not  
What I meant.

LCC's UNITED APPEAL drive is over the 50% mark. President Schafer urges everyone to pitch in and help the college reach its modest \$3,000 goal for the first time in history. With even modest participation by all staff, the goal would be easily attainable. Payroll deduction is available, and it is possible to designate your gift for your favorite UA agency.

Submit items for The Daily to Erika Orchard, editor, ext. 224 or first floor, Administration.

## THE PUBLIC RELATIONS ADVISORY COMMITTEE

has elected Delta Sanderson, language arts, and Bud Proctor, adult education, as chairman and vice-chairman respectively.

## MEETING

Curriculum Committee--  
SPECIAL SESSION--Tues.,  
4 p.m. Electronics Dept.  
conference room.

COLLEGE CLOSURE: Staff members may be interested in viewing a repeat of The Advocates program, featuring a discussion of the pros and cons of closing colleges for pre-election campaigning. It will be seen today at 5:30 p.m. on KOAP-TV, Channel 10.

BOOK REVIEWS: A weekly series of book discussions sponsored tuition-free by the Adult Education Office begins Tuesday from 7-10 p.m. in Apprenticeship 223-224. This is a chance to read and talk about books emphasizing current trends of thought in several fields. The series will open with a discussion of five books on "Personal Therapy" led by Ed Lichtenstein, from the U of O Psychology Dept.

Several LCC staff members will be leading future book reviews. Among them are:

Nov. 3 -- "Early Childhood Education" JoAnne Ellingson,  
Jill Heilpern

Nov. 10 -- "Individual Communication" John Klobas

Nov. 17 -- "Mass Communication" Art Tegger

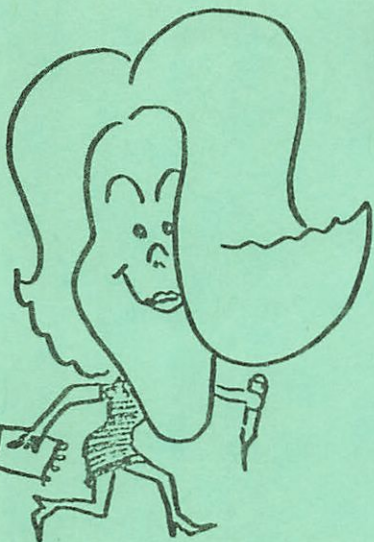
Nov. 24 -- "Mind Expanding Drugs" Marston Morgan

COACH AL TARPENNING'S cross-country team continued one unbeaten streak but lost another, following a five-squad meet in Corvallis Saturday. Tarpenning's troops placed third overall in the four-mile run, losing their first meet of the year. However, they remained unbeaten against community college competition, besting both Clackamas and Portland community colleges.

The meet was won by the Staters Track Club, made up of ex-OSU athletes, with 42 points. The Portland Track Club was second with 55, LCC had 63, CCC 88, and PCC 123. Dan VanCamp was the Titans' top finisher, placing sixth.

The LCC soccer team opened its season on the wrong foot Friday, losing to OSU 5-2. Steve Meligan got both Titan goals.

DUE YOUR OWN THING -- See your section representative about joining the Staff Association. (\$5.00 a year plus \$1.00 if you'd like to be a member of OCCA)--Sept. 15 is the last day to sign up for a payroll deduction.







# Tuesday

October 13, 1970

\*\*\*\*\*  
\* BARGAIN: something you \*  
\* can't use at a price \*  
\* you can't resist. \*  
\*\*\*\*\*

THE LCC BOARD OF EDUCATION will convene Wednesday evening after touring the LRC and Instructional Materials facilities. Staff members in these areas have been working hard to develop an interesting and informative presentation.

Among the items slated for Board consideration is a request to change the Board policy concerning Classified Staff holidays. The change would add as additional holidays the Friday after Thanksgiving and the working days immediately preceding and succeeding Christmas Day (except when Christmas falls on Wednesday, in which case Thursday and Friday would be designated as holidays).

The present policy acknowledges seven legal holidays plus a choice of either the Friday after Thanksgiving or Christmas Eve day as optional holidays.

In a study of vacation schedules followed by the state's community colleges, Business Manager Bill Watkins found that the number of holidays granted ranged from LCC's seven (plus one optional) to 14 at Treasure Valley Community College. He has also compiled several comparative studies of vacation, sick leave, and tuition benefits received by classified employees at Oregon community colleges for presentation to the Board.

In other matters, the Board will be asked to approve a lease on Heceta House and hear reports on Fall Term enrollment, long-range planning, and the NABS program.

CURT RAYNES, electronics instructor, and DARWIN MCCARROLL, electronics dept. chairman, are certified electronics technicians, following their successful completion of a national exam given recently by the National Electronics Association. CHESTER WOLF, electronics technician, earlier earned his certification. The exam will be given again Thursday at 7:30 p.m. in the Electronics Bldg.

SPEAKING TO JOHN KLOBAS' Sociology class yesterday, one of "Nader's Raiders" urged LCC students to support a referendum to raise student fees \$1. The money would be used to hire a firm of experts from such areas as law, engineering, medicine and ecology to "investigate large corporations, to aid consumers with problems, and generally try to correct many unlawful, fraudulent conditions that exist."

A similar student financed group, the Oregon Public Interest Research Group (OPIRG), was formed at the U of O Friday, following Nader's speeches there.

BUCK BAILEY AND BERT DOTSON were busy yesterday, hosting tours of Springfield junior high students involved in the SUTOE (Self-Understanding Through Occupational Exploration) program. Its purpose is to give students a chance to learn about career opportunities in vocational-technical areas at an early age. These same students will return to the campus in December to visit classes.

Submit items for The Daily to Erika Orchard, ext. 224 or Adm. Bldg.

## \*\*MEETINGS\*\*

### Academic Council

4 p.m. - Dean Carter's office

### Athletics and Student Activities Committee

4 p.m.  
LRC Conference Rm.

### Curriculum Com.-Special

4 p.m.  
Elect. Confab. Rm.

## SPECIAL EVENTS

Wednesday morning at 9, Dr. Schafer will be the guest on the KLCC-FM show, "Today in Eugene."

\*\*\*\*\*

### VIEW THROUGH A WINDOW:

As he neared the sideline and shifted from leg to leg, you could tell he was ready for action. They noticed and urged him on. With his sly smile partly hidden as he drew up his arms in anticipation, he quickly flicked his wrist and with a mighty lunge of his body, flung the saucer across the field. The fete accomplished, Rosco Wright strolled calmly to the sideline bench, content to observe the remainder of the noon time frisbee competition.



## STAFF ASSOCIATION PRESIDENT REPLIES

### EDITOR'S NOTE:

The following letter was received in reply to The Daily story concerning LCC's involvement in the proposed development of the area surrounding the college. Briefly, the story pointed out that a conflict of interests may be developing between the college--which must issue a statement outlining its position on the proposed development--and a group of staff members interested in acquiring two acres of the property for building a staff club.

To the Editor:

I'm impressed by your succinct summary in last Friday's Daily, headed "Proposed Development of LCC Area Stirs Controversy." Since I asked you if you would report Marston's views to the staff so that we could consider them, I hope you'll understand that I don't necessarily agree with all of the statements.

After a group of interested staff members had met, viewed the two acres available west of the college, and set plans for completing financial arrangements, Marston and I had a hot lunch. Marston stirred, the boiling point was reached, and I decided our plans should simmer until staff members had a chance to consider his concerns. The people I've contacted agree with me that we don't want to become involved in anything detrimental to LCC. Marston has not yet persuaded me that our plans would be detrimental.

I do not agree with the statement in Friday's Daily that "involvement in land ownership and development raises the question of inconsistencies in the college's position." Bill Watkins had told me that the college was opposing the kind of development Spliid proposes southwest of the college. The college can oppose that on the grounds outlined by the Planning Commission staff without inconsistency.

The Planning Commission Staff Report says that "although there probably are certain commercial and multiple residential uses--selected, oriented and designed primarily to serve the College community--that would be suitable at the location in question, the proposed development (Oscar Spliid's) does not appear to be of that type; the proposal appears to represent an attempt to create a community center which would largely function independently of the college...." If individuals acquired the two acres west of the college, they would in no way be obligated to support development of other property as proposed by Spliid.

I'm sure Mr. Spliid would like that, but I pointed out in my initial discussions with him that we would support the college in opposition to development involving additional roads or increased use of access routes to the college, development involving a need for schools, parks, sewers, street lighting, adequate police and fire protection. I believe that our development could be more desirable than any other usage. I think there is no way to prevent development entirely.

I'd like to be involved in development of the two acres to prevent removal of trees along the roadway. The Oregon Research Institute plans for the property north of those two acres preserve the natural setting. I have long felt that communication and rapport could be improved if our staff had a center for social gatherings. My fear is that if we do not act soon, the land will not be available to us and that it will be developed in a much less desirable manner. Can we avoid controversy, avoid undesirable development, and yet secure the land for college-related use?

Karen Lansdowne



# Wednesday

October 14, 1970

TODAY'S CALENDAR CUES:

LCC Board Meeting

7:30 p.m. Board Room

Zero Population Growth

5 p.m. Cafeteria

## COLLEGE CABINET

Several student activities captured the spotlight at yesterday's College Cabinet meeting.

A POSITION PAPER pertaining to student political activity prior to the Nov. 3 general election was introduced by Tom Purvis, Student Senate publicity director. It reads:

It shall be the position of the Student Senate that, by mutual agreement between students and instructors, a student should be able to arrange for alternatives to class participation, when possible, without being placed at a disadvantage in relation to other students in the class. The student should present a plan of his activity; or, when appropriate, a brief report.

The purpose of this statement is to insure that those students who wish to involve themselves in the political process while maintaining their classwork are encouraged to do so.

In earlier discussion of the upcoming election and student involvement in campaigning, Dr. Schafer indicated that classes would be held during this period. However, he also stated his willingness to work with student leaders to provide alternatives for those students who wish to take an active part in electioneering. Several Cabinet members expressed hope that a joint statement could be issued announcing the Student Senate's position and the administration's support of it.

Since the matter pertains directly to instruction, it will be brought before the Instructional Council Thursday.

## THANKS!

CLIFF BROWN, our custodian who was laid-up recently, would like to thank all those who remembered him while he was in the hospital.

P.S. We're happy to see you in healthier spirits again, Cliff!

A RECOMMENDATION FROM the coaching staff that LCC participate only on league and regional levels and not send athletes to national competitions drew concern from the Cabinet.

The recommendation is an outgrowth of meetings between the coaches and administration officials. Dr. Schafer said this move would be in line with existing policy at Washington and California community colleges except that they do not compete in regional meets either.

Opposing the recommendation, PAUL MALM said he felt athletes should have an opportunity to compete at the highest level possible. Reacting to Malm's comments, Nile Williams suggested  
(continued)

"Gosh--you really mean it?  
You want ME to be your  
STAFF ASSOCIATION  
MOOD MANAGER?

What can I say?

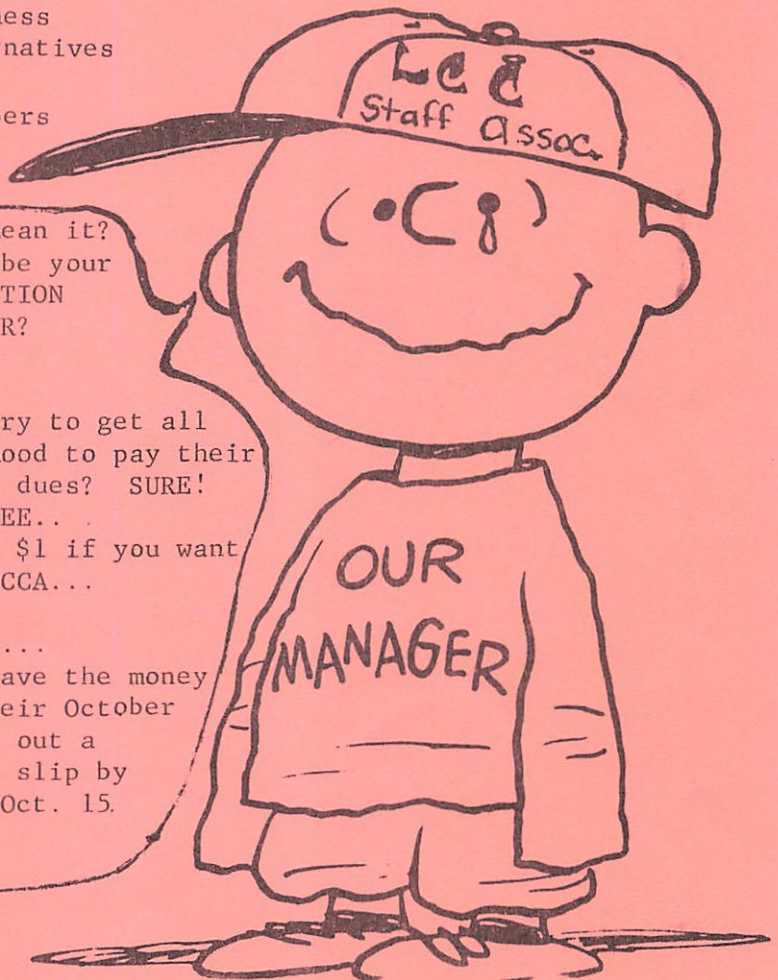
...Say I'll try to get all  
staffers in the mood to pay their  
Staff Association dues? SURE!

LET'S SEE...

That's \$5 plus \$1 if you want  
to join OCCA...

oh yea...

they can have the money  
lifted from their October  
checks by filling out a  
payroll deduction slip by  
THURSDAY--that's Oct. 15.





## LIMITING COMPETITION continued

there should be some consistency in policies governing such student activities as music, debate and performing arts as well as athletics. Gerry Rasmussen responded that he did not feel all student activities could be treated in the same manner.

At this point, Bill Beals interjected his feeling that officials should be realistic and admit that the coaches' recommendation is the only alternative since funds for sending athletes to national competition are not available.

The athletics recommendation and its effect on other college activities will be examined further by the Athletics and Student Activities Committee.

THE PROPOSED SALE of handcrafted items on campus may be illegal. This is the advice received from LCC's legal counsel by Dean Carter. Following the Student Senate's request to set aside an area on campus for the sales, a committee headed by Carter was appointed to look into the legality of the activity and to suggest policies that should govern it. The LCC lawyer has indicated that such sales on college property appear to be illegal, and he will prepare a brief outlining the specific statutes pertaining to the matter.

BEGINNING TODAY, students in Paul Malm's political science classes will be interviewing candidates in the upcoming election and will later conduct a straw ballot. Malm requested the Cabinet's permission to release the results of the vote before the election rather than after as they were told to do last year. None of the Cabinet members could see any objection to this request.

OUCH!! Counselor STEVE HANAMURA admitted he was a bit concerned about being the "subject" for the shaving demonstration in the Nursing Dept. yesterday. However, he came out of it unscarred!

### MEETING THURSDAY:

#### Instructional Council

9-11 a.m. Board Room

#### Group Health Representative -- Archie Zarewski

11 a.m. Contact Carol Beckley

#### Oregon Community College Presidents

Oct. 15-16 Treasure Valley CC

Let Dr Schafer know today about questions you would like him to relay to the representatives. Among the topics scheduled to be discussed are college financing and regionalization of programs and tuition.

*Daily  
10-14-70  
p. 2*



# Thursday

October 15, 1970

- \* CONGRATULATIONS BETTY!
- \* Early this morning
- \* (12:11), the LCC Board
- \* approved the selection
- \* of Counselor BETTY
- \* EKSTROM as the new
- \* Student Activities
- \* Director.

## BOARD OKAYS HECETA HOUSE LEASE, REJECTS HOLIDAY REQUEST

The LCC Board gave its go-ahead to plans for leasing Heceta House but rejected the Classified Section's request for extra holidays at last night's long four-hour meeting.

Following three months work by Business Manager Bill Watkins and other college officials, LCC can now proceed with the maintenance and remodeling work necessary to ready the facility north of Florence for instructional departments. Plans call for the Science and Forestry departments to use it during Winter quarter. The proposed uses of Heceta House have been enthusiastically supported by LCC and other colleges, particularly because of its perfect location for biological and ecological study.

The Board's endorsement seemed uncertain for a while when members Dean Webb and Clifford Matson voiced concern that several "influential" citizens were worried that the facility would become a "country club for LCC students." They said they felt approval should be held up until such concerns could be cleared up.

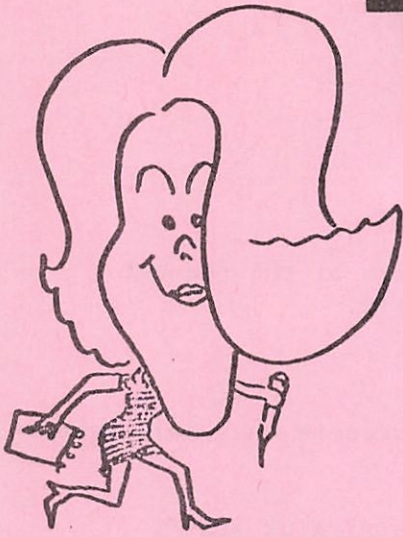
But Board Chairman Robert Ackerman replied that he personally did not feel such arguments should be seriously considered since the persons who allegedly made them had not appeared to voice them or submit their concerns in writing to the Board.

## HOLIDAY REQUEST

The Board postponed indefinitely action on the Classified Section's request for extra holiday vacations at Thanksgiving and Christmas. Webb and Ackerman both expressed displeasure at the Board's being asked to approve a fringe benefit in the middle of the year. They pointed out that such requests should be part of the SPPC salary negotiations with the Board. Ackerman added that the Board had instructed the Administration last June to develop a policy for handling all such requests at one time.

Defending the request, Staff Association President Karen Lansdowne told directors that the Classified Section had asked that this holiday provision be included in the salary negotiations last year, but the college president had decided against the inclusion. The request was then brought to the Board at a later date, but action was postponed.

Mrs. Lansdowne added that the Board's request for a policy was considered by the staff, but it was felt that since the holidays were coming up soon and the possibility that such a policy might negate the Classified Section's proposal made last October the matter should be brought to the Board again as soon as possible.



Submit items for  
The Daily to Erika  
Orchard, editor, ext.  
224 or first floor, Adm.  
\*\*\*\*\*

## MEETINGS TODAY

Group Health Rep. Archie  
Zarewski, 11 a.m.--  
contact Carol Beckley  
for room location.

## DEADLINES TO NOTE

\*\*TODAY is the deadline  
for registering dependents  
for Dental Insurance.

\*\*TODAY--is also  
the final chance to  
authorize payroll deduc-  
tions for paying Staff  
Association dues.

\*\*FRIDAY--is the last  
day to request full re-  
fund on books purchased  
at the LCC Bookstore  
for Fall Term classes.



### HOLIDAY REQUEST continued

The directors were not convinced, however. No discussion of the merits of the request itself was heard before action on the matter was postponed indefinitely.

### STUDENTS SPEAK OUT

Earlier in the meeting, three student leaders spoke out on student concerns they said were not being met on campus.

Omar Barbarossa, a student senator and part-time member of the Financial Aids staff, said many students feel they are left out of the decision making processes at LCC or are given only token roles. He cited the need for student housing, additional child care facilities and enlarged quarters for student activities as among the top priorities set by the Senate. He said that help in meeting these priorities has thus far not been available from the school administration. "We need a commitment and cooperation from the administration," Barbarossa said.

Marston Morgan responded that he had just completed a study of housing needs and concurred that a serious problem exists. But he continued that the administration is on the verge of making specific recommendations on the matter and said that there are a variety of solutions that do not require the college to "get into the housing business."

Board member Albert Brauer requested that the college lawyer prepare a brief outlining what the college can legally do regarding housing. "Maybe we should think more seriously about taking the school out to the students," he added in response to statistics showing the number of students seeking housing has risen from 20% last year to 53% this year.

Responding to the students' concern about day care facilities, Associate Dean Gerry Rasmussen said that the Home Economics staff has been asked by him to assist the students in setting up their proposed off-campus facility.

Bill Watkins spoke next, saying he did not agree that the Senate leaders expression of student concerns to the administration had fallen "on deaf ears." "You are implying that you must go to the Board to get the administration's attention."

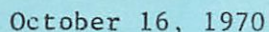
Board member Matson said he couldn't understand why the concerns hadn't been brought to the College Cabinet before being forwarded to the Board. Barbarossa replied that the student body president who is a member of the Cabinet has a job and other responsibilities which prevent him from attending all Cabinet meetings.

Ackerman instructed the administrators to prepare answers to the student concerns for presentation to the Board in November. Ackerman also told the students that in the future, such concerns should first be brought to the attention of the College Cabinet so the Board has some back-up information when considering the problems.

\*\*\*\*\*

HEADCOUNT UP: In other matters, Marston Morgan told the directors that a 23% increase in student headcount could be expected this year. Since the Office of Instruction estimates that its funds are allocated only to accommodate some 5,200 FTE enrollment out of the total 5,888 expected, the critical point is that some 2,000 students will be turned away during winter and spring terms if additional funds are not available.





Close accounting of the till is assured for the Staff Association-- 100% of the full-time math instructors\$ and their secretary have joined the \$ Association.

STUDENTS SUPPORTED: The Instructional Council considered the Student Senate's position statement on pre-election campaigning by students yesterday and voted 14-5 to accept the statement and recommend its adoption to the president. The document along with the Council's endorsement will be returned to the College Cabinet Tuesday. A joint statement indicating the administration's support of the Senate's position is expected to be issued next week.

In other matters:

- \* Dean Case urged that views of faculty members be brought to the Instructional Council through the department chairmen so the whole area of instruction can be united.
- \* Plans for developing voc-tec programs in Instrument Repair and Piano Tuning are underway, Ed Ragozzino, Performing Arts Dept. chairman, reported. Work experience opportunities will be an important part of the courses, he said.
- \* The Council approved the creation of a joint instruction and counseling committee to work out ways efforts in these areas could better complement each other.
- \* Members approved the formation of an ad hoc committee to review staff selection procedures. Also formed was a committee to review the college repeal system.

HOWARD ZINK has been chosen to represent the Instructional Council at the College Cabinet.

DARWIN MCCARROLL reports that the State Surplus  
List will be available in the Electronics Dept.  
office 8 a.m.-5 p.m. through Oct. 21

THE PLANNING PROJECT 1969-75 document is on reserve  
at the library.

Submit items for The  
Daily to Erika Orchard,  
editor, ext.224 or  
first floor,Admin.

**LAST CHANCE:** This is the last day to receive full refunds on texts purchased from the Bookstore.

ANOTHER BOOKSTORE NOTE:  
Staff members may wish to take a look at the selection of magazines now on the shelves of the Bookstores. Included are such popular ones as Time, U.S. News, Sports Illustrated, and Readers' Digest.

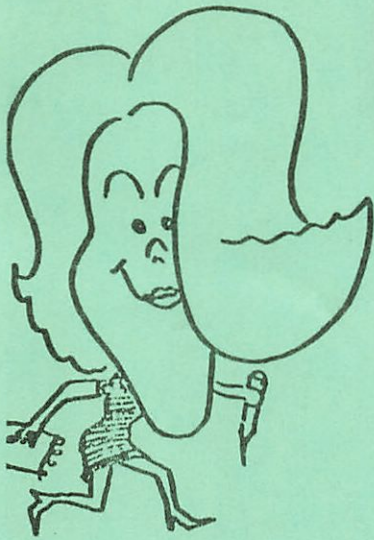
MEETINGS: an organizational  
meeting for persons inter-  
ested in starting a literary-  
art magazine--  
TODAY, 3:30, Lane Tutorial  
Service Room

SPORTS: Potentially the toughest test of the season will await LCC's cross-country team tomorrow as it meets three other community college squads at Mt. Hood. The quadrangular meet will pit Lane against league favorite Mt. Hood, Portland, and Umpqua. The Titans have yet to lose to community college competition this season.

THE FOLLOWING EXPLANATION by Bill Beals, Social Science Dept. chairman, is in response to a statement attributed to him in Wednesday's Daily story about the coaches' recommendation to limit athletic competition to league and regional levels and forego national meets. The statement read, "...Bill Beals interjected his feeling that officials should be realistic and admit that the coaches' recommendation is the only alternative since funds for sending athletes to nation competitions are not available."

BEALS EXPLANATION: The remark appearing in the Oct. 14 bulletin has been taken to mean that I questioned the honesty and integrity of the coaches. I do not remember the exact words that I used. I certainly do not question their integrity or honesty. I do feel that the budget problem makes discussion of competing out-of-state rather academic. I further feel that if funds do become available, the question of competition should be reviewed as it affects speech, drama, athletics, or any other program. This, however, reiterates that no connotation of a slur on the coaches as a group or as individuals was intended.





# Monday

October 19, 1970

If it's true that the best things in life are free, then I must be settling for second best.

--Poor Woman's Almanac

**POLLUTION IS TOPIC:** A national change of goal from having man in space to having man swim in Lake Erie is urged by an environmental pollution fighter who will deliver a free, public talk on campus Tuesday night.

Norman K. Sanders, a professor at the University of California at Santa Barbara, will describe "Pollution: The Problem and How to Fight It. The program is to begin at 8 p.m. in 301 Forum Bldg. Sanders stresses ways by which individual citizens can fight pollution. He has urged recycling of sewage, returnable cartons, population control, and lawsuits against polluters.

He is presently teaching courses in oceanography, geomorphology, climatology, and environmental pollution at UCSB and is developing a multi-discipline course on the relationship between man and the oceans. His research interests include the application of remote sensing techniques to the study of coastal processes and the problem of monitoring oil pollution in Southern California waters.

Submit items for The Daily to Erika Orchard, editor, ext. 224 or first floor, Administration.

## MEETING TUESDAY:

### College Cabinet

9 a.m. Board Room

### Public Relations Adv. Com.

4 p.m. 314 Forum

### Academic Council

4 p.m. BU 104

### Curriculum Committee

4 p.m. Board Rm.

### Bookstore Commission

4 p.m. Electronics 207-A

### Media Commission

4 p.m. RM. 222 Center

## **STUDENT MEMBERS SOUGHT:**

The Public Relations Advisory Committee needs student representatives! Interested students should come to the next meeting Tuesday at 4 p.m. in Forum 314.

**DEAN CARTER** has outlined procedures for contacting students in case of emergency:

1. The Admissions Office will handle all calls requesting the college to contact a student in an emergency situation.
2. If the student is in class, the department secretary will be asked to contact him. If the student is between classes, the Admissions Office will ask the Dial Retrieval Center to page him.

\*\*\* Students will be paged only in emergencies. Authorized to request paging are Bob Marshall, John White, Betty Ekstrom, and Dean Carter.

\*\*\* Other uses of the PA system:

1. for emergency announcements by security personnel
2. for announcing coming activities--check with Mrs. Ekstrom. (students and staff are encouraged to publicize activities by other media)

**THE ATHLETICS AND STUDENT ACTIVITIES COMMITTEE** has been formed as a recommending body accountable to the director of student activities. Officers are Jay Eubanks, chairman; Michael Rose, vice-chairman; and Peggy Wakefield, secretary. Consultants from the athletics, performing arts, and speech departments are urged to contact Jay through the Student Activities Office.

**HECETA WEEKEND:** A cabin on Heceta Beach is available for rent at \$10 a night. It belongs to former LCC Dean of Students Bud Hakanson. For more information, contact Bill Cox, ext. 301.

**HOST MT. HOOD** lived up to its advance billing Saturday, handing LCC its first cross-country defeat against community college competition this season. The Titans scored 30 points, five more than Mt. Hood, who was picked as the pre-season favorite to win state cross-country team honors. LCC did place ahead of Blue Mountain and Umpqua in the quadrangular four-mile run. The Titans placed third through fifth, paced by season-long standout Dan VanCamp.





# Tuesday

October 20, 1970

WE WELCOME to our campus today Ralph W. Hahn, dean of students at Maunaolu College, who will be sharing with LCC officials ideas from the small, independent liberal arts institution located in Maui.

\*\*\*\*\*

CONVOCATION PLANNED: President Schafer will respond to staff and student questions about LCC's operation during the first all-college convocation of the school year Thursday at 4 p.m. in Forum 301-2.

Individuals are encouraged to submit their questions to the President's Office before Thursday so that more complete answers can be given. However, questions from the audience will be welcome during the meeting.

SPEAKING TONIGHT: Man's impact on his environment will be analyzed during tonight's public address by University of California professor Norman K. Sanders.

Speaking at 8 p.m. in Forum 301-2, Sanders will stress ways individual citizens can fight pollution and share the results of his research on preserving the coastal environment.

Submit items for The Daily to Erika Orchard, ext. 224 or Adm. Bldg.

## MEETING TODAY:

Public Relations Adv.Com.  
4 p.m. 314 Forum

Academic Council  
4 p.m. BU 104

Curriculum Com.  
4 p.m. Board Rm.

Bookstore Commission  
4 p.m. Electronics 207-A

Media Commission  
4 p.m. 222 Center Bldg.

\*\*\*\*\*

## CAMPUS ACTIVITIES--Tonight

Lecture: Dr. Norman Sanders  
8 p.m. Forum 301-2

ENROLLMENT STATISTICS: Copies of enrollment projections by department that went to the last Board meeting are available in the Office of Institutional Research and Planning for review and perusal by department chairmen.

THE COLLEGE SIDE INN is now open for lunch a half hour earlier, serving from 11 a.m. - 1 p.m.

**PAPERBACKS**

ARE YOUR BOOKSHELVES bulging with paperbacks you've read and filed away?

GREAT!

The LCC library has a solution for you--  
a "PAPERBACK EXCHANGE"

The idea proposed by Del Matheson and his staff is simple:

just bring in those old paperbacks  
and trade them for others at the "exchange"

ORDER AHEAD: Don Johnson, publications specialist, requests that staff members give the print shop FIVE DAYS advance notice for such special print jobs as:

- \* Orders requiring NCR paper
- \* Orders requiring odd sized paper (other than 8½ X 11)

- \* Orders requiring colored ink
- \* Orders requiring metal plates made
- \* Orders requiring collating

Print orders that are currently being processed on short notice will continue to be done on this basis.

DISTRICT 4J RESEARCH: Faculty members wishing to conduct classroom observations or research projects within the Eugene schools are reminded to first check with Marston Morgan. He will forward your requests to the school district's coordinator of research.

District 4J officials have asked LCC's cooperation in establishing some control over the many annual requests they receive to involve their students as subjects for research.

Likewise, requests from persons outside the college to do research in LCC classes should also be directed to Marston.



## WHAT'S NEW IN YOUR AREA?



YOUR TIP-OFFS will help the LCC community keep in touch--both personally and professionally--and will let us know about special projects, events, and staff and student achievements that should be passed on to newspapers, radio and TV stations.

A SPECIAL NOTE: Each Monday, the Information & Publications Office sends out to local TV and radio stations a list of story ideas. Our hope is to entice them to come out to the campus to tape and film the sights and sounds of LCC life. We're always looking for new ideas and naturally welcome your suggestions.

Certainly there are a number of daily happenings in your department that are of interest to the staff and perhaps the community but remain untold because the information hasn't reached the right sources.

JUST AS IMPORTANT, we have some 500 staff persons who receive honors, attend conferences, have interesting hobbies, express opinions, get sick, have babies and make an occasional amusing blooper! WE'D LIKE TO RECOGNIZE THEM!

TO ENLIST YOUR HELP in gathering news ideas, The Daily will include in its Tuesday editions a "TIP-OFF" form which you are encouraged to use in letting us know about happenings in your area.

This isn't intended to discourage you from calling in information--we just don't want to lose you if you don't happen to reach us by phone.

LIKEWISE, we'll still be calling you and coming around to look for stories you're making through your work at LCC.

WE REALIZE YOU ARE BUSY PEOPLE  
so we don't expect your  
TIP-OFFS  
to be lengthy....  
JUST give us the tips  
and we'll follow up  
on them.

FOR A STARTER, here's a TIP-OFF check-list:



TELL US:

### DEPARTMENT DOINGS

projects underway  
policy changes  
new classes  
conferences planned

### HUMAN HAPPENINGS

awards, honors  
articles published  
conference attended  
hobbies-trips taken  
sick list-cradle roll  
anniversaries

### NEEDS NOTICED

opinions to give  
volunteer needs  
items to sell-  
give away  
suggestions

\* WHO  
\* WHAT  
\* WHERE  
\* WHY  
\* WHEN  
\* AND HOW

Send TIP-OFFS to Erika Orchard, Administration Bldg. ANY TIME YOU HAVE THEM.





# Wednesday

October 21, 1970

## COLLEGE CABINET

Reporting on last week's community college presidents meeting, Dr. Schafer told Cabinet members that the group is considering proposing that the state's cigarette tax be doubled from 4¢ to 8¢ per pack. The approximately \$12 million raised yearly would be earmarked for clearing up community college debts and for financing campus construction projects.

Comparing cigarette taxes around the nation, Oregon's is fourth lowest, with North Carolina's 2¢ tax at the bottom. On the high end are Hawaii, 40¢, and New Hampshire, 34¢. The cigarette tax in 38 states ranges from 8¢ to 16¢.

If approved, the tax hike would be implemented during the next biennium, Dr. Schafer said.

Continuing his meeting report, Dr. Schafer said that the sentiment expressed among the college presidents was that if the economic picture stays the same, little can be expected in the way of staff salary increases this year. Dr. Schafer is heading the group's personnel policies sub-committee.

In other College Cabinet considerations:

- \* SPPC Chairman Paul Malm reviewed the Classified holiday request which was rejected by the LCC Board last Wednesday. The Board stipulated that all salary and fringe benefit proposals must be submitted for consideration at one time. Dr. Schafer commented that the general feeling among the directors seemed to be that LCC's vacation schedule after five year's employment (allowing one month off) is most generous and compensates for any other benefits not received.
- \* Dean Rasmussen reported that efforts are continuing to help the Student Senate set up a day care center.
- \* During a discussion of representation on college committees and councils, several Cabinet members repeated their support of faculty and student representation on the Instructional Council.
- \* A legal opinion received from the college lawyer confirmed that the sale of handicrafts on campus is illegal. The statement read, "The Board has no authority to allow private individuals, whether they be students or not, to use school property or facilities for the selling of their handicrafts."

Submit items for The Daily to Erika Orchard, editor, ext. 224 or first floor, ADM.

\*\*\*\*\*

### HEALTH CLAIM PROBLEMS?

Archie Zarewski, Group Health insurance agent can help you from 11 a.m. until 1 p.m. today. Carol Beckley, ext. 376, can tell you where he's located.

### WEDNESDAY MEETINGS

Zero Population Growth Com.  
3 p.m. Forum 309

### THURSDAY MEETINGS

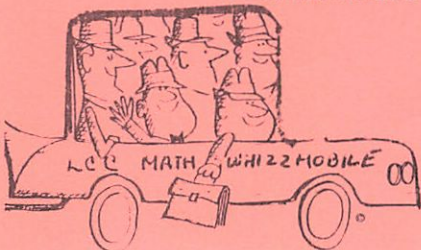
Instructional Council  
9 a.m. Board Rm.

Student Senate Meeting  
2:30 p.m. Board Rm.

All-College Convocation  
4 p.m. Forum 301-2  
Questions for Dr. Schafer to respond to may be submitted to the President's Office prior to the Convocation or posed from the floor.

**FACULTY RESPONSES SOUGHT:** Dick Newell of the Faculty Work Load Committee asks that faculty members complete and return to their department secretaries the questionnaire found on the second page of the "Work Load and Budget" memo each instructor received. These responses are important in forming the Work Load Committee's recommendation to the Budget Committee, Dick said.

Representing LCC at the Northwest Math Conference in Victoria, B.C. last Friday and Saturday were BUD COOK, JOHN LOUGHLIN, RICHARD COALWELL, JIM SNOW, AND HOWARD ZINK, department chairman.





PET TRAINING AT LCC? And headquartered in the Administration Building?

Yep--those are the facts--but before you get too excited about bringing that pooch of yours whose educational potential has yet to be tapped, read on.

PET stands for Preservice Education of Teachers, a pilot project which will prepare 20 experts from business, industry, and health occupations to teach at the community college level.

The man heading this training is DICK EARL--that good-natured, cherry-checked fella who hangs out on the first floor of the Administration Building by Ron Byers'

## HOW SHARP ARE YOU TODAY?

have you figured out the  
underlying message?

and Paul Colvin's offices. (Some speculate he's Santa in disguise, but we'll have to wait a couple of months to check that out.)

Dick explains that the PET project is one of three sponsored by the Oregon Board of Education in response to the growing demand for highly skilled vocational teachers in the state's community colleges. The other two recruitment and training projects are based at Portland Community College.

Recruitment of the participants is underway with vocational officials from Linn-Benton, Chemeketa, Umpqua, and Southwestern community colleges cooperating. LCC people can help in this process, too. DICK URGES FACULTY AND STAFF MEMBERS TO SUGGEST PERSONS THEY KNOW FROM BUSINESS, INDUSTRY AND HEALTH OCCUPATIONS WHO WOULD BE QUALIFIED AND INTERESTED IN THIS TEACHER TRAINING.

Those selected would not have to leave their present positions permanently but would need to be on campus 4-6 hours a week to attend PET activities. Between December and June, they will have an opportunity to observe and conduct classes in their vocational areas while receiving instruction in preparing curriculum materials. Upon completing the training, they will be eligible for five-year Oregon Vocational Certificates.

Dick would also like to talk to faculty member new to teaching vocational classes and hear their suggestions of what should be included in vocational teacher training programs.

LCC's PET director is no newcomer to this teacher training concept. He has been involved in the state project since its inception and last summer was responsible for planning and carrying out a training program for high school vocational instructors in the Portland area.

The \$17,334 program on campus is federally funded under the Education Professions Development Act. The success of the initial PET project will determine whether the training opportunity is continued the following year.



# Thursday

October 22, 1970

**ALL-COLLEGE CONVOCATION TODAY:** President Schafer will respond to staff and student questions about LCC's operation during the first all-college convocation of the school year today at 4 p.m. in Forum 301-2. He will be answering questions submitted to his office this week and will welcome others from the audience.

**ELECTION CAMPAIGNING:** LCC will conduct classes as usual during the two weeks prior to the Nov. 3 election, but students who want to participate in political campaigns may make special arrangements to be absent from classes.

Dr. Schafer released this statement yesterday, following endorsement by the College Cabinet and the Instructional Council of the Student Senate's request for release time for political activities.

Students must obtain approval from each instructor whose class they will miss and make up class work to the satisfaction of instructors, Dr. Schafer said.

"The College, though it is a place where ideas can be freely examined, must itself remain free from partisan political involvement," the president said. "Yet, we want to encourage the students as individuals to become involved."

The policy is in line with other Oregon community colleges, all of which will hold classes as usual during the political season.

**PAINT JOBS:** As a service to staff members, students in John Haurigan's Auto Painting class are accepting touch ups, spot repairs, and panel work on cars and pickups--no complete paint jobs please.

Later model cars ('62 on) are preferred and no older pickups can be handled.

Cars must be ready to paint as no metal work is being done at this time. Several fenders or doors or rear quarter-panels are ideal for this type of work now, John said.

**PLAY TICKETS:** Tickets are on sale at the Information Desk in the Administration Bldg. for "We Bombed in New Haven," the LCC fall student production.

The play will be presented November 13, 14, 19, 20, and 21. Ticket prices are \$1.50 for the Friday and Saturday performances and \$1 for Thursday night.

George Lauris, who joined the Performing Arts staff this year, is directing the comedy-drama about the atrocities of war.

Submit items for The Daily to Erika Orchard, editor, ext. 224 or first floor, Adm.

## CALENDAR CUES

Student Senate Meeting  
2:30 p.m. Board Rm.

All-College Convocation  
4p.m. Forum 301-2

even  
a  
drip  
can  
give  
a  
drop

... CALL SHARON SHOREY, ext. 381, for your appointment to give blood MODAY, OCT. 26. The Bloodmobile will be on campus from 1-3:30 p.m. WE NEED 20 DONORS.



OFF TO CONFERENCES: LARRY MURRAY, director of special training programs, left yesterday for Portland and the "Environmental Teach-In," a conference featuring consultants from environmental and MDTA programs.

DR. SCHAFER will join him for part of the conference Friday when he arrives to participate in the Oregon Association for Continuing Community Education Fall meeting being held at the same location that day. The president will represent community colleges during a panel discussion Saturday when the OACCE meeting moves to the Mt. Hood Community College campus.

LCC is well represented in the association. Assistant Dean of Students NILE WILLIAMS is president-elect and HELEN LOOMIS from our Adult Basic Ed. program is a board member.

#### COUNSELORS TRAVELLING, SPEAKING:

JONATHAN WEST was the featured speaker at the local Soroptimist Club luncheon Tuesday. He spoke to the womens' service group about "Counselor-Teacher Responsibilities" and minority groups on campus. The Soroptimist Club has presented nursing scholarships to several LCC students in the past.

A large contingency of LCC Student Personnel Services staff members was in Gearhart Sunday through Wednesday, participating in the Northwest College Student Personnel Association meeting. On hand were Student Activities Director BETTY EKSTROM, Placement Director BUCK BAILEY, Assistant Financial Aids Director JACK POWELL, and counselors MARILYN STADIUS, DAVE ROOF, AND STEVE HANAMURA. Joining them was our administrative intern MARYANN MILLER.

ALSO AT THE meeting was  
GENE AITKEN of the  
Performing Arts Department,  
who directed the Washington  
Army National Guard band  
and chorus.

... and he proposed in THE DAILY

ANOTHER staffer was in Gearhart last weekend.  
IRENE PARENT, coordinator of foreign students,  
was in charge of a four-state conference of the  
National Association for Foreign Students.  
She reports it was an excellent meeting,  
attended by 75 foreign student advisors,  
admissions officers, and other delegates  
from Oregon, Washington, Idaho and Alaska  
colleges and universities.

GET-WELL WISHES ARE IN ORDER for ANN NEWTON,  
Nursing Department, who is in the hospital  
for major surgery.

PUBLISHED IN the October issue of "Journal of  
School Health" is an interesting article  
co-authored by LAURA OSWALT, Student Health  
Service, and Bev Juilfs, School District  
4J, entitled "A Rolling Approach to  
Community Health."

HOME SOUGHT: A cute, female pup--thoroughly  
spoiled--needs a home. Call 746-2673  
after 5 p.m.





# Friday

October 23, 1970



Submit items for The Daily  
to Erika Orchard, editor,  
ext. 224 or first floor, Adm.

## BLOODMOBILE VISIT: MONDAY

Twenty donors are needed!  
Why not help out this month.  
You can set an appointment to  
give blood sometime between  
1-3:30 p.m. Monday on campus  
by calling Sharon Shorey,  
ext. 381.

## HOW ABOUT CHESS?

Staff members are invited to  
play chess every Monday from  
4-7 p.m. in Apprenticeship 718.

## NO DEPOSIT... PLEASE RETURN

Last year, Merlin Ames, Food  
Service manager, stocked 500  
ceramic mugs as a service to staff  
and students who prefer to drink  
their coffee out of a mug.

**HE NEEDS YOUR SERVICE NOW:**  
Some 50 mugs have wandered off  
since the start of the term. Since  
these cost 95¢ each, the Food Service  
would appreciate it if each person  
would scout around his office and  
return any mugs found.

"We'd like to continue this  
service, but we can't afford to buy  
more mugs," Merlin said.

"THINGS ARE PERKING AT LANE" Dr. Schafer told some 60  
staff members and students gathered at the all-  
college convocation yesterday afternoon. During  
the informal 45-minute session, the president  
responded to questions from the audience and shared  
his observations on a number of LCC topics:

**\*\* ON BUILDING THE WINTER TERM SCHEDULE:** "At this  
point, we're planning a normal winter term operation."  
In the next few weeks, we will know how enrollment  
counts stack up in Oregon community colleges and  
will see what funds are available to support LCC's  
enrollment jump.

**\*\* ON LONG-RANGE PLANNING:** The committee is working  
ahead on plans to build a comprehensive community college  
program at LCC, with appropriate emphasis given to fine  
arts. Alternatives will be reviewed, with the idea of  
calling for bids on whatever expansion is planned on  
July 2, 1971. The committee feels LCC should use avail-  
able state aid and not ask the public for financial  
support for building projects.

**\*\* ON COLLECTIVE ACTION BY OREGON COMMUNITY COLLEGES TO  
INFLUENCE THE LEGISLATURE TO LOOK MORE FAVORABLY ON  
TWO-YEAR INSTITUTIONS:** "This will be the roughest  
year in terms of competition in the legislature  
between community colleges and higher education.  
But the sentiment seems to be that community colleges  
are in a better position."

**\*\* ON STANDARDIZING TUITION:** Support is evident for  
standardizing community college tuition across the  
state, with the difference being billed to the counties  
students are from. The out-of-state tuition question  
is more complicated since the colleges on the border  
depend on their low out-of-state tuition to attract  
needed enrollment.

**\*\* ON THE FUTURE OF OFF-CAMPUS PROGRAMS:** "I have a hunch  
we should give some serious consideration to a down-  
town center. Some programs could stand alone as  
well or better than here on campus." He is still  
concerned about the lack of a broader evening program.  
This could be encouraged by a downtown location, he feels.

**OUTLYING AREAS:** The college is considering the  
feasibility of developing a "satellite campus" in Florence.  
A number of courses are already being offered here.  
College representatives have been attending chamber of  
commerce meetings in various communities in the college  
district to let the citizens there know LCC is concerned  
about their educational needs.

-- continued--



\*\* ON FILLING JOB OPENINGS: Responding to a comment that LCC people are given first chance at classified openings which cuts off opportunities for applicants outside the college, particularly persons from minority groups, Dr. Schafer said that he was unaware of such a policy and would review it if it does exist. "I believe the most qualified person should be picked, whether he's from New York, here or anywhere else," he added.

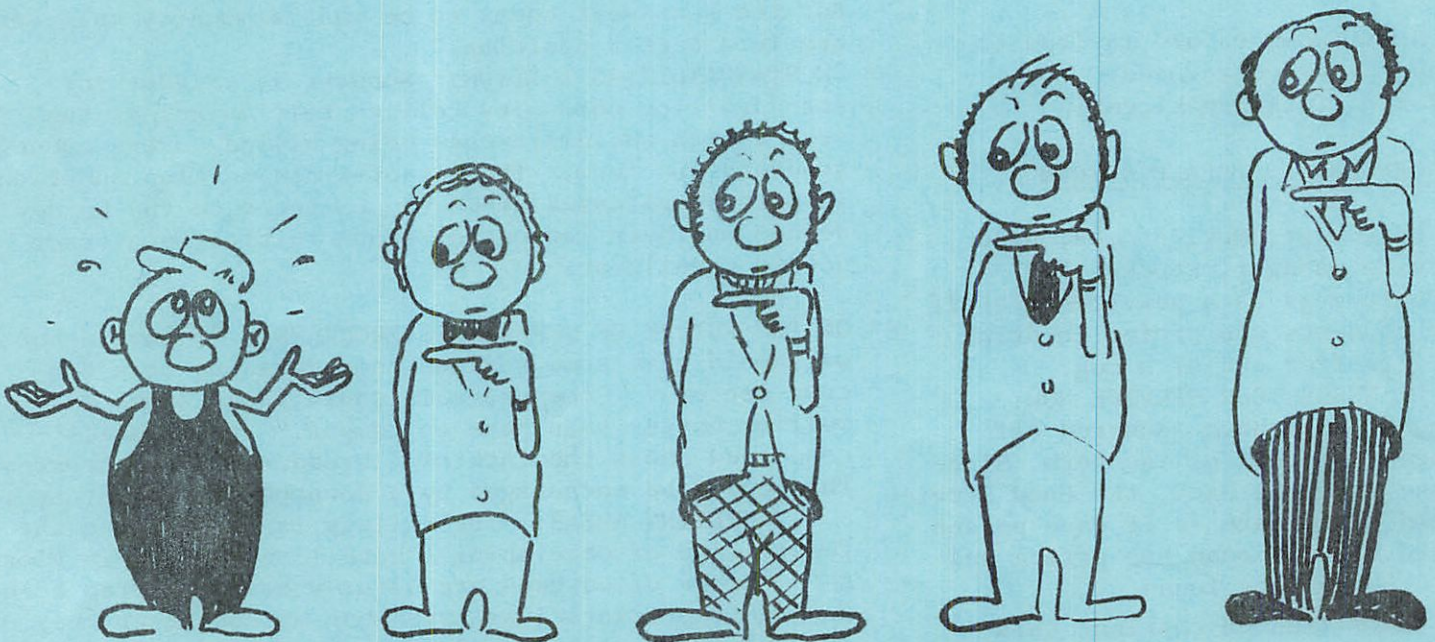
\*\* ON STAFF-STUDENT COMMUNICATION:

Efforts are being made to keep students informed of action taken by college councils and to encourage student participation at these meetings. The committee structure is being reviewed to assess student roles. "We're always open to suggestions for ways to improve communication," the president added.

ON THE SICK-LIST: Custodian BUD ARNOLD is seriously ill in the hospital and would appreciate hearing from staff members.

HIS WIFE SAYS, "THEY GO!" Assistant Dean of Instruction Nile Williams will have four "gent" and four "lady" pups to give away in about 10 days. The mother of the black and white pups is a purebred German shorthair. If you're looking for a pet or two, or..., call Nile at ext. 325.

OUR OWN PROSPECTOR: CARL BLOOD, Industrial Technology prof., has a new hobby-- gold panning. So far, he has pulled \$1.25 worth of gold from area streams. He gets all the joys of the fisherman without having to clean the catch!

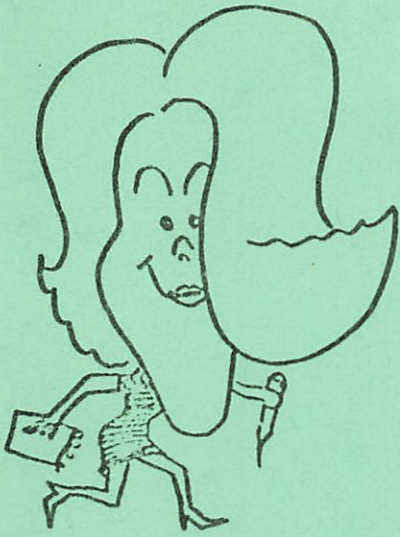


THE PECKING ORDER



# Monday

October 26, 1970



**AT LEAST FIVE MORE, PLEASE:** Five more donors are needed to meet LCC's Blood Bank quota today. Could you help out? Come to the registration table near the snack bar area between 1-3:30 p.m. The volunteers there will direct you to the Bloodmobile.

**FAA APPROVED:** Following a visit by a team of Federal Aviation Administration inspectors, LCC's Aviation Maintenance Technician program is the first in the western region to be reapproved under the revised FAA standards.

Mechanics-Transportation Department Chairman MEL GASKILL explained that as part of the FAA's move to upgrade curriculum in mechanics schools, every institution offering an aviation mechanics program will be inspected during the next two years.

Lane's program has undergone a number of revisions to allow students to learn at their own speed and to earn credit for prior knowledge and experience.

The new accreditation is good indefinitely.

Submit items for The Daily to Erika Orchard, editor, ext.224 or first floor,Adm.

#### CHESS CLUB:

Staff members are invited to play chess every Monday from 4-7 p.m. in Appren. 218. Sets are provided.

**CAMPUS TOURS:** LCC continues to welcome and encourage individuals and groups to tour its facilities so they may get a first-hand look at the educational opportunities available here.

Any staff member or department contacted about tours should refer the callers to the "Tour Coordinating Center" at ext. 332 so that adequate arrangements can be made. Administrative Assistant Bert Dotson, who is in charge of arranging tours, explains that visiting groups normally will see the facilities from the main hallways and not enter individual classrooms. Every effort will be made to avoid disrupting classes.

Prior notice of visiting groups is particularly important in such special purpose areas as that Study Skills Center where advance preparation for tours must be made.

#### CLASSIFIED POSITIONS OPEN:

Secretary III -- College-Community Services Office--should be someone who enjoys working with groups on and off campus. Contact Bert Dotson, ext. 332, for an interview.

Clerk II -- Purchasing Office--contact Pat Grant, ext. 305, for an interview.

**OFF TO SEATTLE:** Associate Dean of Instruction Gerry Rasmussen will be in Seattle today and tomorrow, attending the AAJC Institute On Career Guidance.

**TITANS VICTORIOUS:** It was a successful weekend for LCC athletic teams as the Titan soccer and cross-country squads scored league victories. Lane tallied a 3-2 soccer win over OSU Friday to record its second triumph in five Willamette Soccer League games. LCC's outstanding cross-country team bounced back from its first loss last weekend at Mt. Hood to beat SWOCC and Clackamas community colleges in a triangular meet Saturday at Coos Bay. LCC, placing five runners in the first ten finishes, scored 31 points to SWOCC's 43 and Clackamas' 54.





Submit items for The Daily  
to Erika Orchard, editor,  
ext. 224 or first floor, ADM.

\*\*\*\*\*

#### MEETINGS TODAY

Curriculum Com.--Special  
Session: 4 p.m., HEALTH  
204-D.

Student Senate--Special  
Session: 2:30, Adm.202.

Lane County Assoc. of Ed.  
Secretaries: 7:30 p.m.  
Education Center, 200  
North Monroe.

#### WEDNESDAY

Reorganization meeting for  
Circle K Club: All Kiwanians,  
Circle K, and Key Club members  
are asked to meet in Bill Cox's  
Office, Adm. 103, at noon, Wednesday

# Tuesday

October 27, 1970

**STRAW BALLOT:** Candidates in the upcoming November election will get a preview of how they stack up against their opponents Wednesday. That's when LCC students, faculty, and staff members will have a chance to go to the polls in a straw ballot conducted by the political science classes. According to Paul Malm, the polls will be open from 7 a.m. until 6 p.m. in the dining area.

are you SURE they're covered?? Three staff members learned the hard way--by submitting health insurance claims for dependents they incorrectly assumed were covered under the LCC plan.

Group Health agent Archie Zarewski cautions that other staff members may think their dependents are covered because they remember signing them up. However, LCC switched to a new policy last summer and all staff members were notified last spring and summer and this fall that dependents must be signed up again for the new policy.

ANYONE WHO HAS EVEN THE SLIGHTEST DOUBT ABOUT WHETHER HE SIGNED UP HIS DEPENDENTS for the present health plan should check with Marge McGill, insurance clerk, at ext. 311.

The insurance carrier will grant those who have not signed up dependents and still wish to permission to enroll them now. However, there will be a three-month waiting period before benefits can be received and payroll deductions taken.

NOTE: THIS APPLIES TO MEDICAL INSURANCE ONLY.

MR. ZAREWSKI WILL BE HERE TODAY at 11 a.m. to answer any questions you may have. Contact Carol Beckley, ext. 376, for room location.

**STUDENTS INTERVIEW CANDIDATES:** Jim Brock of the LRC submitted this report: Additional student involvement and analytical decision making is the goal of a project initiated by Paul Malm for his Political Science 203 classes. During the last two weeks, small student groups have been interviewing political candidates. A television recording was made of each interview and placed on the Information Retrieval System for other students in the classes to view. As they see the films, they will be required to answer a number of analytical questions and evaluate candidates' statements. Through the use of these media, it is possible to bring students in closer contact with the candidates and issues in the upcoming election. Legislative hopeful who were interviewed include Leroy Owens, Ray Swanson, Glen Purdy, Jack Craig, Ed Fadeley, Dick Eymann, and Ken Dart.

COUNSELOR BILL WRIGHT will be the guest speaker at tonight's meeting of the Lane County Association of Educational Secretaries. The group meets at 7:30 p.m. at 200 North Monroe, the School District 4J office.



CLERICAL ASSESSMENT PROGRAM: One of the special programs offered by the Business Education Department is Clerical Assessment. This is an individualized study course where students progress at their own speed and can enter and leave at any point. The six subjects offered are shorthand and transcription I, typing I, vocational bookkeeping I, business mathematics, business English I, and office procedures. Those students interested in entering or learning more about the program should see the Business Education Department's counselor.

JED MERRILL, Industrial Technology prof., reports that construction tech. students are currently building a control gate structure for a biology and science reservoir on the upper part of the campus. The project involves such skills as planning and layout, excavation, calculating quantities, selecting construction materials, and job supervision.

NURSES ELLENE GOLDSMITH and LAURA OSWALT joined Director of Admissions BOB MARSHALL at the Oregon Health Service Conference in Portland Thursday. Representatives from many of Oregon's educational institutions were present at the all-day meeting.

ELECTRONICS PROF. RICK ROMANEK has been bugging Food Service Manager MERLIN AMES for some time to stock some coffee for the anti-caffeine crowd. He's happy to report that the "97% free drink" is now available!

WHEN YOU PUT BERNHAM & BAILEY together, you naturally expect a great show. But rumor has it that when you add SORENSON and pit the three against STADIUS--the result is disastrous--at least that's what JOHN, BUCK, and GENE discovered when they took on fellow counselor MARILYN at the golf course recently!

HOW ABOUT THIS? Walden University of Naples, Fla. offers a one year doctoral program (for qualified candidates). Their flier reads: "It will be possible to complete your studies and dissertation in one year consisting of an intensified summer session of four weeks and a closely guided two-semester research effort, at home, culminating in your dissertation."



**TIP-OFF**

... What's New In Your Area? Try Our Checklist:

\* TELL US:

\* WHO

\* WHAT

\* WHERE

\* WHY

\* WHEN

\* AND HOW

DEPARTMENT DOINGS

projects underway  
policy changes  
new classes  
special events  
new personnel

HUMAN HAPPENINGS

awards, honors  
articles published  
conferences attended  
hobbies--trips taken  
sick list--cradle roll

NEEDS NOTICED

opinions to give  
volunteer needs  
items to sell, give away  
suggestions

Send TIP-OFFS to Erika Orchard, Administration Bldg. ANY TIME YOU HAVE THEM.

\*\*\* We realize you are a busy person so we don't expect your TIP-OFFS to be lengthy...just give us the tips and we'll follow up on them.



# Wednesday

October 28, 1970

## COLLEGE CABINET

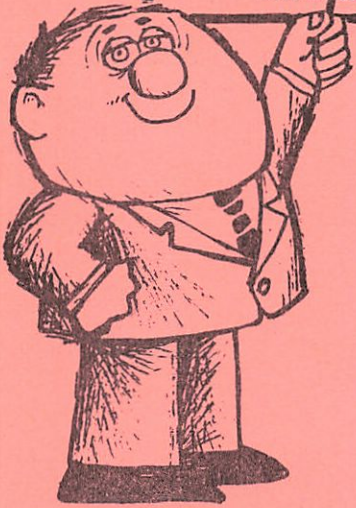
- \*\* BUDGET OFFICER Bill Watkins outlined steps and deadlines which will be followed in preparing the instructional budget for 1971-72 (see back). He explained that it will be program oriented and therefore worked out apart from the administration, business, and student services segments of the total budget. During November, department chairmen will be meeting with their appropriate deans to prioritize their program needs. Hank Douda, accounting specialist, will attend all these meetings to assure that all divisions have the same understanding of the criteria used in the budget preparation and to assure the consistency and completeness of the backup data input by each department.

- \*\* In a related matter, SPPC Chairman Paul Malm asked to what extent the faculty workload study would be implemented into the budget. He was told that where it can be applied, departments are using the formula worked out last year. It was also pointed out that workload concerns in individual instructional areas should be brought out during the November meetings with the deans.

A FACULTY COMMITTEE headed by Dick Newell and Ted Romoser is also studying this problem. Dick asks that department secretaries collect from their instructors the workload questionnaire they were sent to complete. These should be returned to Ted or Dick right away.

- \*\* DEAN OF STUDENTS Jack Carter reported on his meeting with representatives of Adult Student Housing, a group which has been involved in the construction of housing facilities at Mt. Hood Community College using federal funds from HUD. He explained that under this company's proposal, the college has no legal obligation in respect to construction and operation of student housing except to endorse the idea of providing the facilities. The college can, however, suggest the site and be involved in architectural details. Dr. Schafer said he has discussed the plan with Mt. Hood President Dr. Klapstein who believes it is a "great idea and a sound investment." The Long-Range Planning Committee will be considering the proposal this week. If it appears to be feasible, administration officials will develop back-up information to present to the Board as soon as possible.

VOTE TODAY!!  
LCC STRAW BALLOT  
polls open:  
7a.m. - 6p.m.  
CAFETERIA



## TODAY'S ACTIVITIES

Zero Population Growth  
Committee film showing,  
"Time of Man" Forum 301  
10a.m.-12n - 3p.m.

Reorganization meeting for  
Circle K Club: All Kiwanians,  
Circle K and Key Club  
members are asked to meet  
in Bill Cox's office,  
Adm. 103, at NOON

## THURSDAY

Staff Association Meeting  
4 p.m. - Forum 301-2

## PLAY TICKETS AVAILABLE:

Tickets are on sale at the Information Desk in the Administration Building for "We Bombed in New Haven," opening November 13 in the Forum Theater.

Director George Lauris describes the play as "a blend of satire, comedy and tragedy which treats the serious subject of war in a comic fashion."

Ticket prices are \$1.50 for the weekend performances and a special \$1 admission for the Thursday, Nov. 19 performance.



## INSTRUCTIONAL

## BUDGET



## PREPARATION

## SCHEDULE

COMPLETED BY:

- 1/ Data Processing  
Produce a document showing the 1969-70 budget and expenditures and the 1970-71 budget on a departmental basis. Oct. 23
- 2/ Office of Instruction  
The document from Step 1 will be reviewed and adjusted by the Deans to reflect any changes in workload (such as additional sections being taught, etc.) occurring after the 1970-71 budget was finalized. Oct. 27
- 3/ Budget Office  
Prepare percentage factors to be used for escalating the 1970-71 budget to a probable 1971-72 cost level. (10% personnel + 5% materials and services) Oct. 27
- 4/ Data Processing  
Extend the document prepared in Step 1 to include the budget adjustments and escalation factors. Oct. 30
- 5/ Budget Office  
Predict (1) the probable 1971-72 "sure revenues" from all sources except a tax rate in excess of the 6% limitation and the students it will serve and (2) the expected 1971-72 enrollment assuming no monetary restrictions. Oct. 30
- 6/ Data Processing Nov. 6  
Produce a program document showing the distribution of students in vocational programs using 1969-70 data and 1970-71 data. This document will show department within program, the 1969-70 distribution using FTE and a percentage, and class count and percentage--the 1970-71 distribution in class count and percentages only. It should also show the 1969-70 and 1970-71 headcount of students enrolled in the various vocational programs. Both headcounts and distributions will be based on the declared major. The impact of these new or increased programs will be added to the department "base" determined by the "sure revenues" in 5 (1).
- 7/ Office of Instruction Nov. 20  
Each instructional department (using a standardized form) will estimate its growth beyond these new or increased programs, in a prioritized manner, relating these to FTE. The Office of Instruction will prioritize the growth rate of each LDC departmental area through allocation of funds as they relate to FTE. It will also determine the desirable growth or reduction for each vocational program and prioritize this growth among the various vocational programs and in relation to college transfer.
- 8/ Data Processing  
A printout of prioritized growth and reductions will be prepared to show the effect of growth in all programs on each department. Dec. 1
- 9/ Office of Instruction and Departments  
Establish the cost of discrete levels of growth or reduction for each of the various levels shown in the data from Step 8. Dec. 18
- 10/ Data Processing Dec. 31  
Using the costs per level established in Step 9, show a departmental and finally a total budget at various levels of service as measured by FTE or expenditure dollars and predict the related FTE reimbursement and tuition income for these levels.

HAPPY

NEW YEAR!





Submit items for The Daily to Erika Orchard, editor, ext.224 or first floor,Admin.

# Thursday

October 29, 1970

DEMOCRATS came out on top in yesterday's straw ballot; but if the voter apathy evident yesterday carries over into the Nov. 3 election, more Republicans could find themselves the victors. Only 356 staff and students voted.

This was the post-election analysis offered by political science professor Paul Malm who organized the straw ballot.

Since voter registration in Lane County is very heavily democratic, it was predicted that democratic candidates would pull the most votes. However, if the party support in yesterday's election carries over to the general election, the outcome of some close contests could swing to the republican side, Malm noted. The only republican victors in the straw ballot were Rep. John Dellenback who defeated James Weaver 231-118 in the fourth congressional district race,

Governor McCall who topped Robert Straub 231 to 113, and George Wingard defeated Raymond Swanson 190-140 in the senate race.

## IN OTHER CONTESTS:

### Labor Commissioner

Knudson (Rep.) 131  
Nilsen (Dem.) 188

### County Commissioner

Hayward (Dem) 167  
McCulley (Rep) 114  
Wysong (Ind) 55

### STATE SENATOR

Pos.1 Fadeley (Dem) 232  
Miller (Rep) 108  
Pos. 2 Browne (Dem) 201  
Husband (Rep) 144  
Pos. 3 Swanson (Dem) 140  
Wingard (Rep) 190

### Assessor

Bylund (Dem) 170  
Parkhurst (Rep) 142

### STATE REPRESENTATIVE

Pos. 1 Dart (Rep) 150  
N.Fadeley (Dem) 191  
Pos. 2 Bowerman (Rep) 163  
Owens (Dem) 175  
Pos. 3 Kennedy (Dem) 226  
Purdy (Rep) 116  
Pos. 4 Eymann (Dem) 234  
Powell (Rep) 98  
Pos. 5 Craig (Dem) 198  
Reed (Rep) 128  
14Dist. Beck (Rep) 137  
Perry (Dem) 199

Among the measures being voted on, the new property tax bases for schools received 2-1 support, with the yes votes numbering 226 to 98 no votes.

A breakdown of voter turnout showed that of some 6,000 potential staff and student voters only 356 cast ballots:

Faculty 41  
Admin. 9  
Classified 34  
Students 272

\*\*\*\*\*

MEETINGS TODAY: The Staff Association will meet at 4 p.m. today in Forum 301-2.

ROTC ON CAMPUS: ROTC representatives from the U of O will be on campus today and Friday to answer questions about the program and to find out if there is sufficient interest among LCC students to warrant starting a class at Lane. If ROTC classes were initiated here, the college would assume responsibility only for providing classroom facilities. All administration, logistics, and offices would be maintained at the university, where students would also go for drill and leadership labs.

The ROTC representatives will be located in the lobby of the Center Bldg. from 8 a.m. - 5 p.m.



THE NEW HOPE SINGERS, a group of college age singers and musicians who perform sacred as well as folk and pop selections, will appear on campus Friday at 12:30 p.m. in Forum 301. The group was here last year and was well-received by those who attended the concert. There is no admission charge.

TWENTY-FIVE MDTA students started their three-term training in the Business Education Department's clerk-steno program this week. Their training will continue through next July.

EFFORTS ARE CONTINUING to improve communication between LCC and the area high schools. History instructors from eight local high school districts met Saturday with representatives of LCC and the U of O. DAVE CROFT directed the articulation meeting which included discussion of LCC's innovative programs in history and the advanced placement and basic courses offered at the high schools. A second articulation meeting sponsored by the university will be held in November.

ADMINISTRATIVE INTERN DEE MARTIN is coordinating plans for a dinner meeting between LCC vocational instructors and representatives from high school vocational programs. The dinner and informational meeting will be held on campus Nov. 5.

PICTURE LIFTED: Business Manager Bill Watkins reports that he has had his second disappointment at LCC. "Somebody (his language was not this restrained) stole that seascape painting right off the wall of my office," he reported. It was a gift from his son. His area on the second floor of the Administration Bldg. has been hit before. Earlier in the week, an electric pencil sharpener and a piece from the brass sculpture display were taken.

WE WELCOME TO our classified staff ZELL McFADGEN, the new secretary in the Adult Education office. She's taking over for SANDY BRAUR, who's getting ready for her new arrival.

DR. SCHAFER will be the main speaker at tonight's public meeting on career education at Harris Hall at 7:30 p.m. He will discuss LCC's role in career education in the county.





# Friday

October 30, 1970

"NEW YORK DESTROYED.  
IT'S THE END OF THE WORLD.  
YOU MIGHT AS WELL GO HOME TO DIE."

The radio broadcast which spread such rumors and panic on Halloween Eve 32 years ago will be relived almost to the exact moment tonight at 7 p.m. on KLCC-FM.

"Hey, Jerry, what if Mr. Cox recognizes us?"  
"Relax, Jan, just keep Wendy from giggling and watch out for Rocchio's teeth falling out."  
\*\*\*\*\*

## CAMPUS ACTIVITIES Friday

### NEW HOPE SINGERS:

performing at 12:30  
in Forum 301. No  
admission charge

Orson Welles' "War of the Worlds" stirred terror across the United States on Oct. 30, 1938 when people tuning in late to his fictitious radio narration heard what they believed was an actual news flash, warning citizens about a foreign invasion of New Jersey.

Telephone wires were immediately jammed as terrified citizens spread the word of the "massacre" in which "40 to 7,000 people" had already been killed.

The college station will present the hour-long program along with accounts of the public's reactions.  
\*\*\*\*\*

TREAT YOURSELF during the noon hour today: Come listen to the New Hope Singers performing at 12:30 in Forum 301. The troupe of young musicians has performed across the United States, entertaining audiences with sacred, pop, and classical selections.

ROTC Representatives  
Center Bldg. lobby  
8a.m.-5p.m.

**STAFF ASSOCIATION:** Representatives from Social Security and the Public Employees Retirement System stressed to members of the Staff Association the importance of knowing what benefits they are entitled to. Speaking at yesterday's meeting, both representatives outlined the various benefits available and encouraged staff members to contact their offices in the event of death, disability or retirement in their families so they may be accurately informed of dependent benefits coming to them. In addition, staff members were urged to contact the Public Employees Retirement System office and talk with officials there before drawing out funds. Often employees withdraw from the System not knowing they are actually entitled to additional benefits.

John Loughlin, math prof., is chairman of the Staff Association's insurance committee.

### IN OTHER ASSOCIATION BUSINESS:

- \*\* Members were told that Dec. 9 is the date set by SPPC for presenting the salary-fringe benefits proposal to the Board of Education. This means that the entire package for next year will be presented to each section for approval, probably during the last week of November.
- \*\* President Lansdowne reported that \$1,089 in dues has been collected, a little more than half the total amount budgeted (\$2,050). A breakdown of paid members shows: 102 of 200 faculty paid, 84 of 223 classified staff, and 31 administration section members. The money received so far has been budgeted in these amounts: \$1.50 for unpaid bills, \$335 for SPPC negotiation expenses, and \$150/section for OCCA delegates (a \$90 reduction). No funds have been budgeted for public relations (budget election), the social committee, or welcome wagon supplies.
- \*\* Members learned that MABEL KENNEDY has resigned as secretary of the Association. Her duties will be assumed by MARIE PATZ, secretary to the director of development.



Dear Editor:

Could the staff be informed of the benefits accruing to LCC from the travel and other outside activities of its employees? Thank you.

I Am Curious

Dear I Am Curious:

Your note caught me on the verge of doing something about this very question. Since the first conference reports began dribbling in, I've been concerned that they tell us little more than who has been absent from the campus. Mulling this over one evening, I remembered a comment Dr. Schafer made at the all-college convocation in reference to working on innovative projects. He pointed out that we should not overlook opportunities to learn from and build upon programs begun at other educational institutions.

It seems to me that conferences and other meetings attended by representatives from various colleges would be logical places to learn about new ideas being tried. Likewise, including brief notes on these ideas in the conference reports submitted to The Daily would allow other staff members to benefit from them-- or at least to be informed of activities, ideas, or opinions passed on by educators around the country.

So-- The Daily asks that future conference reports be supplemented with a brief synopsis of some aspect of the conference or an interesting idea learned from another delegate.

THE FUTURE OF ENGLISH COMPOSITION in Oregon colleges will be discussed today and tomorrow during the Oregon Community College Conference on English at Mt. Hood Community College. Delegates from LCC include Evan Alford, Don Smith, Katie Anderson, Delta Sanderson, Art Tegger, Karen Lansdowne, and English Department Chairman John Howard. Alford and Smith will be describing their innovative program in communication skills.

THEY'LL BE HANGING FROM THE RAFTERS it sounds like from reports of the many LCC bats, witches and ghouls (sorry--but its Halloween Eve Day) who are sharpening their fangs for tonight's annual celebration being held at the Bailey shack. Buck and Jerry (Sirois) who are hosting the staff creatures promise sips of frothy witches' water and a few surprises for the "honored" guests flying by during their yearly spook travels.

BLOOPER OF THE WEEK AWARD goes to LAURA GAUDERMAN, Dean Carter's secretary, and EVELYN TENNIS, secretary to Associate Dean Gerry Rasmussen, for their handling of a visitor on campus this week. When Laura told the gentleman that the Dean wasn't in but would be back soon, he agreed to return and left to look around the campus. Hastily, Evelyn informed Laura she had just sent away the state's attorney general.

A bit embarrassed and anxious to rectify her error, Laura alerted several college officials she knew were anxious to talk with the attorney general and waited nervously for his return. She--and others on the second floor of the Ad. Bldg.--were ready for him this time --brought him coffee, introduced him around, and entertained him until Dean Carter returned.

The men exchanged greetings and entered Carter's office.

A very few minutes later, the visitor came out and said good-bye to Laura and Evelyn--and left.

Confused, they quizzed the Dean about the visitor's short visit.

His reply: "Oh, you mean that insurance salesman?"

WHITE REFRIGERATOR for sale--\$25.00 Contact Eva Ashenhurst, ext. 225.