

Tuesday, September 4, 1990
Last Week of Summer Term

THE DAILY

Published for the staff of Lane Community College
Editor: Wendell Anderson, Ext. 2591

COLLEGE CLOSURE WILL BE BRIEF - The College will be closed on Monday, September 10, from 8-10:30 a.m. for the annual all-staff meeting. Most offices will be closed for 2½ hours; a few may have someone answering telephones or offering minimal counter services. The closure is being minimized this year to cause the least possible inconvenience to students.

JOIN YOUR FRIENDS FOR BREAKFAST - Managers will prepare and serve a no-charge breakfast to staff from 7:30 to 8:45 a.m. on Monday, September 10 in the main campus cafeteria. Volunteer workers include cooks Steve Barton, Verne Whittaker, Diane Dann and Sandy Ing; servers Jerry Moskus, Larry Warford, Ron Mitchell, and Jim Ellison; toast makers James Cagney and Tom Reimer; table bussers Dick Hillier, Jay Jones, Larry Brown, and Pat John; coffee servers Joe Farmer and Larry Romine; and others to be named.

PRESENTERS NAMED - Program for the all-staff meeting, which begins at 9 a.m. on Monday, September 10, in the Performing Arts Theatre, includes: Jim Pitney, chairman of the Board of Education and representative of the Junction City Cultural Society; President Jerry Moskus; reports from the Governance Task Force and Planning/Budgeting Task Force; announcements from LCC Foundation and United Way; and recognition of the Innovator of the Year, the Instructor of the Year, and the Classified Support Person of the Year.

FACULTY MEETS - The faculty will meet at 10:30 a.m. on Monday, September 10, in the Performing Arts Theatre.

PROGRAM MAILED - The complete program for this year's in-service and professional development activities was sent to all staff last Friday via U.S. Mail and inter/intracampus mail. If you didn't get a copy, call Laura Tamura at ext. 2301.

GET THE PRESIDENT ON YOUR CLUB'S AGENDA - Jerry Moskus is available to talk to organizations about LCC all year-long, but would particularly like opportunities during this month and next. Contact the program chair of your group and have that person call 726-2200 to schedule the President. He also will talk to groups at coffee hours held in homes, churches, etc. He will chat informally or present Significant Pursuit, an audience participation quiz about LCC. Be an arranger; help get the LCC story to the community.

WHAT HAPPENS IF... - College Council's agenda today at 1:30 p.m. in ADM 216 includes a discussion on the possible consequences if LCC's tax measure on the November 6 ballot is rejected by voters.

COME SEE THE NEW LOOK - Financial Services, Personnel Services, and Research, Planning & Evaluation invite you to drop by on Wednesday, September 12, between 10 a.m. and 3 p.m. to see their redecorated spaces. They're all on first floor, Administration.

WORKER ORIENTATION SCHEDULED - Training & Development will be holding orientation sessions on September 10-11 for 400 laid off Weyerhaeuser workers and their spouses. The sessions will run from 9 a.m. to 10 p.m. both days in the Forum auditorium. Services to dislocated workers will be explained, but it isn't known at this point how much money will be available to retrain these people, who are mostly Springfield residents.

PARTICIPATION INVITED - The Classified Council Organizing Committee has been meeting to decide on mission, goals, structure, and processes for the new Classified Council. The Council is being organized to give all Classified staff a voice in campus decision making. The Organizing Committee is interested in your ideas. We particularly want input on how members of the Council should be selected. Our meetings are open and we encourage you to take part. Our next meeting is Tuesday, September 11, at 3 p.m. in the Board Room. Or, you may contact any member of the Organizing Committee: Rosemary Busby, Pat Chase, Charlotte Kudlemyer, Elaine Matchett, Marie Matsen, Mary Michaud, Roberta Opdenweyer, Jessica Overturf, Phil Powers, Jerry Sirois, Jane Wojcik, Carol Woodman, Kathy Worth. - Marie Matsen, ext. 2364

FALL WELCOME - A message from President Jerry Moskus

September 24-28 is the week for Fall Welcome. There are many activities planned for the first week of classes and I hope you will join in the fun.

The Student Resource Center is making welcome banners for departments. If you have not already received your banner, please call the Student Resource Center, Ext. 2342 or Joyce Kofford, Ext. 2315. They will be happy to help you.

An information booth will be located in front of the PE building again this year. We will need staffing from 8 AM until 7 PM, Monday, Tuesday and Wednesday. Charlene Blinn will schedule times with staff through the three Vice Presidents' and the President's offices. We will have a new popcorn machine and prepackaged popcorn. The ping pong ball drop will happen Friday, September 28, at about 11:50 AM on Bristol Square. We have received some exciting prizes this year. The prizes may be claimed at a sock hop Friday evening in the gymnasium or in Student Services during the next week. There will be bands Wednesday and Friday during the noon hour and a BBQ lunch on Friday. The Snack Bar and the Cafeteria will also be open.

We encourage all staff to wear "Ask Me" buttons the first week of classes, which is helpful to students and visitors to our campus. You can ask your departments about the buttons or call Joyce Kofford.

We appreciate your help in providing a warm and welcoming atmosphere for students and staff at LCC. We are all set for a great time.

A CHANCE TO HELP - LCC will have information booths in the community on two weekends in September and needs help staffing them. Call Charlene Blinn now at ext. 2235 to get your name on the list. Sign up for a one to two-hour shift, or more if you can share the time. No special knowledge required, just a positive interest in LCC. A booth will be at Valley River Center on Saturday and Sunday, September 15-16. Saturday hours are 10 a.m. to 9 p.m.; Sunday hours are 11 a.m. to 6 p.m. The other opportunity to help is at the Eugene Celebration in downtown Eugene on Saturday or Sunday, September 22-23. The Saturday hours are 9:30 a.m. to 7 p.m. on Saturday and 11 a.m. to 5:30 p.m. on Sunday. Talk to your supervisor about helping out and then call Charlene.

FACULTY OPEN ENROLLMENT - If you're a faculty employee and are interested in changing from one medical insurance plan to another, or in adding a dependent to your medical or dental insurance coverage, you may do so during open enrollment from September 1 to September 28. New enrollment forms may be picked up at the receptionist's desk in Personnel Services. All changes and additions received by Marie Nelson, Personnel Services, by 5 p.m. September 28 will be effective October 1, 1990. Representatives from OEA Choice Trust and Select-Care will be available to answer any coverage questions on Wednesday, September 19, from 9 a.m. to 12 p.m. in the northwest corner of the cafeteria.

DEADLINE NEAR - Sign up by Wednesday, September 5, to play in the LCC Open golf tournament on Friday, September 14, at Emerald Valley Golf Course at Creswell. Co-sponsors for this year's eighth annual event are Uncle Bud's Mazda at Cottage Grove and Bit-by-Bit Computer Rentals of Eugene. Players have a chance at winning a 1990 Mazda RX7 or \$5,000 in cash for a hole-in-one. Entry fees are \$125 or \$225 for a couple. Call Joe Farmer at ext. 2803 to get in on the fun. Proceeds go for scholarships.

FOR SALE: If you are interested in Word Perfect 5.1 or Borland software products, call Teresa Fulmer by Sept. 7. She's at LCC Bookstore, x2679.

FOR RENT: Harry's Place, a beach cabin at Yachats. Same low rates, same arrangements. BUT--the place has been improved with many new changes. Available most week days and the following weekends: Sept. 21-22-23; all days in Oct., most in Nov.-Dec. Jan Brandstrom, Counseling, x2204, or 345-1395 evenings.

FOR SALE: 1982 Mercury Capri, \$500 firm. Needs new/rebuilt engine, etc. Call Lorna Funnell, Continuing Education, 726-2252, or Nathan, 342-4817.

FOUND IN THE LCC FAIR BOOTH: An umbrella and child's sweatshirt. To claim, call Shan Titus, x2688.

JOB OPPORTUNITIES: Employment & Trng. Spec., 2 pos., Spec VIII, closes 9-13; Employment & Trng. Spec. at Cottage Grove, Spec. VIII, closes 9-13; Employment & Trng. Spec. at Florence, Spec. VIII, closes 9-13; Program Clerk, Clerk III, closes 9-14; Program Specialist, Spec. VI, closes 9-14. Inquire at Personnel Services.

Monday, September 10, 1990
Fall Term begins September 24

THE DAILY

Published for the staff of Lane Community College
Editor: Wendell Anderson, Ext. 2591

DAILY NOW ON MORE FREQUENT SCHEDULE - Starting today, The Daily will be published each Monday, Wednesday, and Thursday. Deadline is 12-noon the working day before publication. Send items to Larry Romine in ADM 211 or place them in the basket marked "Daily" in front of ADM 210. If sufficient news is received, The Daily will add Tuesday or Friday issues as needed. Practice openness; share your department or program news through The Daily.

APPOINTED - In the absence of Bob Marshall, who is recovering from back surgery, John Bernham is serving as acting vice president for Student Services. President Jerry Moskus has named Dr. John Winkquist as interim director of Counseling. He will serve through June 30, 1991. Winkquist has been a counselor at Lane for 20 years. He also teaches community college counseling at the University of Oregon.

UNDERWAY - Fall In-Service and Professional Development started today with a breakfast in the cafeteria and all-staff meeting in the theatre. Check the booklet, "Bridges to 25 more years of accomplishments," for the complete schedule of activities that runs through this week and next. Fifty-four sessions are scheduled.

CORRECTION - The left-hand page of the centerfold in the printed In-Service schedule should say "Monday, September 17," at the top. The programs on that page include Written Test Construction; Open House, Teaching & Learning Center; and "Leading Collaborative Consensus Decision-Making for Faculty."

FACULTY OPEN ENROLLMENT - If you're a FACULTY employee and are interested in changing from one medical insurance plan to another--or adding a dependent to your medical or dental insurance coverage--you may do so during open enrollment from September 1 to September 28. New enrollment forms may be picked up at the receptionist's desk in Personnel Services. All changes and additions received by Marie Nelson, Personnel Services, by 5 p.m. September 28 will be effective October 1, 1990. Representatives from OEA Choice Trust and Select-Care will be available to answer any coverage questions on Wednesday, September 19, from 9 a.m. to 12 p.m. in the northeast corner of the cafeteria.

KEEP THOSE CHANGES COMING - Changes and corrections for the Directory are being accepted through Friday, September 21. Send them to Larry Romine in ADM 211.

OPEN PROCESS PROMISED - If Lane has to cut \$2.3 million from its budget next spring, the process will be very open, President Moskus told College Council last week. He expects the cutting to focus on what does the least harm to students and employees. It should reflect a vision, he said, "of what we want the College to be, rather than the status quo." In another discussion, the Council was unenthusiastic about a Jefferson, Oregon, developer's request for support for his plan to build 300 units of low-cost housing on the land next to the northeast corner of the 30th Avenue campus. The land is zoned for farming and the developer wants Lane to say his housing is an essential school use so that he can get a permit to build without a zone change.

APPRECIATION - Thanks to Training & Development Chair Patti Basconcillo for sharing the dislocated worker story last week before the Eugene Downtown Lions Club. Among the data she presented was this description of the dislocated wood products worker: 90 percent are male, average age is 42 (range is 22-65), 12th grade education, worked 16+ years in mills, earned wages of \$10+ per hour, wants to stay in this area, believes in American dream of economic stability in return for honest work, and, yes, would eat a spotted owl (preferably fried).

GOT A QUESTION ABOUT SUPPLIES? For information about the new Boise Cascade Office Products supply system, ask Karen Evans of that company on Tuesday, September 11 in Health 269 from 10 a.m. to 12-noon.

STAFFING NEEDED - Call Charlene Blinn at ext. 2235 to help staff booths: September 15-16, VRC; September 22-23, Eugene Celebration; September 24-25-26 Fall Welcome.

DISLOCATED WORKERS ON CAMPUS - About 400 Weyerhaeuser employees and their spouses are visiting Lane today and Tuesday to attend job retraining and career-life planning orientations. Training and Development Chair Patti Basconcillo says her staff and representatives from Weyerhaeuser and the Oregon Employment Division will share what's available for dislocated workers. The sessions are scheduled for 1 p.m. and 7 p.m. today and 9 a.m., 1 p.m., and 7 p.m. on Tuesday, in Forum 308-309. Each will last from one to three hours depending on how many attend and ask questions. Child care is being offered. Weyerhaeuser has helped make arrangements and is funding the sessions.

ROAD BY FOUNTAIN CLOSED - The road next to the fountain on the west side of the 30th Avenue campus, and its parking spaces, are closed to traffic all this week, September 10-14. LTD buses are using the driveway as a loading zone. The regular bus driveway and loading zone are closed for completion of new LTD shelters. Security officers are available along the driveway from 7 a.m. to 3 p.m. to redirect traffic and assist with handicapped parking. The closure won't interfere with access to the west or south parking lots. Questions: Paul Chase, Security manager, ext. 2561.

PLEASE REQUEST CLASS MATERIALS EARLY - Printing/Graphics is experiencing the usual flood of duplication requests prior to the beginning of a term. Please submit work orders for material needed the first day of fall term by this Friday, September 14, to assure delivery. Thanks for your consideration.

MEMORIALS SUGGESTED - Memorial contributions may be made to the Eugene Symphony or the Obsidians in honor of former criminal justice instructor John W. Kocher. He died August 31 of a heart attack at the age of 67. Kocher came to Lane after 28 years service in the Air Force, from which he retired at the rank of Lt. Colonel. He taught here 15 years. About 4½ years ago he married Trish Hawkins of Personnel Services, who survives. Memorial contributions may be sent to the Eugene Symphony at 45 W. Broadway, Eugene 97401 or to Obsidians, Inc., P.O. Box 322, Eugene 97440.

ATTENTION CONTRACTED FACULTY: Faculty level change application packets for the 1990-91 academic year are available at the Reception/Information desk in Personnel Services. Completed applications must be returned to Personnel Services NO LATER THAN November 1, 1990.

DUNNE TO SPEAK - English Instructor Susan Dunne will lead a workshop at the November 1-3 Pacific-Western Division Community College Humanities Association meeting in Portland. Her topic is "Writing Across the Curriculum: Researching Spike Lee's Do the Right Thing in a Computer Classroom." She will share her experiences in Lane's Title III Computer Writing Classroom project and how she used the Lee film to help students produce research-based papers. Those who seek information about the CCHA conference may contact Susan at ext. 2419.

FUTRELL AT UO - Mary Hatwood Futrell, former president of the National Education Association, will deliver a convocation address entitled "A University for Everyone," at 3:30 p.m. on Friday, September 28, in the ballroom of the Erb Memorial Union on the UO campus. It's free and open to the public.

DISCOUNTS AVAILABLE - Discount tickets are available to Lane staff who attend League for Innovation conferences. For the October 21-24 "Community College and the Computer" conference at Dallas, staff of League colleges will receive a \$150 discount from the regular registration fee of \$250. Coupons are available from Laura Tamura at ext. 2301.

SOLVE THE PUZZLE - KLCC 89.7 FM will join National Public Radio all this week in "Class of 2000: The Prejudice Puzzle." They will examine the origins and consequences of the many forms of prejudice. Tune to Northwest Passage, Live Wire, and Sunday Brunch to hear coverage of local prejudice.

WANTS TO BREAK RECORD - Craig Shergold, 7, has a tumor on his brain and little time to live. He wants to be in the Guinness Book of Records for the largest number of get-well cards ever received by an individual. His address is 36 Shelby Rd., Carshalton, Surrey, British Columbia, Canada, SNBILD.

SBDC OFFERS WORKSHOPS TO HELP SMALL BUSINESSES - Consider these if management is your thing: "Advertising, Marketing, and Public Relations," 6:30-9:30 p.m., Thursday, October 4, \$39; "Professional Management Forum," 2-5 p.m. Wednesdays beginning October 17 for five weeks, \$126; "Holiday Display Techniques for Retailers," 6-9 p.m., Thursday, October 18, \$27. Call 726-2255 for further information.

BET YOU DIDN'T KNOW THIS ABOUT CWE - The Cooperative Work Experience Department is in the fourth year of an insurance carrier-funded effort to rehabilitate disabled workers. About 100 people a year are placed in jobs and combine them with courses relevant to the assigned work. The program will begin to offer similar services to disabled veterans this year. Some 90 percent of the job placements are turning out to be permanent.

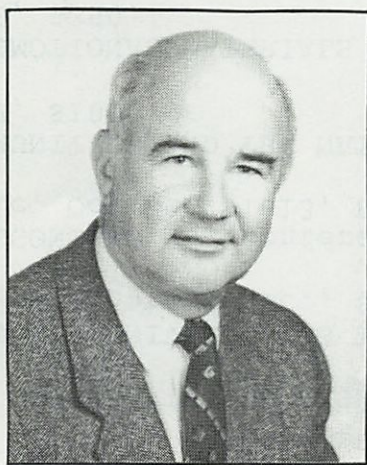
Tuesday, September 11, 1990
Thirteen Days Till Classes Begin

THE DAILY

Published for the staff of Lane Community College
Editor: Wendell Anderson, Ext. 2591

CLASSIFIED WINNER: LAURA ORY - The only full-time administrative support person at LCC at Florence is the winner of the 1989-90 Classified/Support Staff award. Honored at Monday's all-staff meeting, she was cited for "extraordinary" services as an administrative assistant. She goes far beyond the duties of a clerical person by advising students, ordering textbooks, making room assignments, preparing the class schedule for Florence, helping with events in the community, and even doing public speaking. Ory is a former Lane music student and was a secretary in New Mexico before joining Lane three years ago. She was chosen by a committee which included Steven Myers, Mathematics; Sharon Moore, Admissions; Pat Riggs, Board of Education; Edna Kennel, P/G; and Scott Carpenter, Eugene businessman.

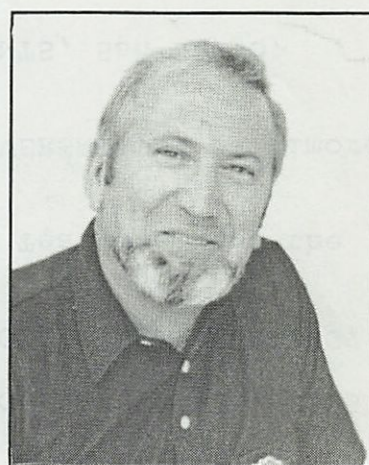
1989-90 OUTSTANDING EMPLOYEES



Jim Keizur
Innovator of Year



Laura Ory
Classified/Support
Staff Award



Milt Madden
Instructor of Year

FREE PLANNERS AVAILABLE - SELCO has free pocket planners for all staff for the 1990-91 year. Pick one up at the reception desk at Personnel Services.

FREE ICE CREAM - You are invited to join staff and students at the Fall International Student Ice Cream Social on Thursday, September 13, at 3 p.m. in the cafeteria.

FACULTY TO SHOW WORK - A Art Department Faculty Exhibition may be seen in the Gallery from September 24 through October 19. A reception for the artists will be held Friday, September 28, from 7:30-9:30 p.m. in the Gallery. See sculpture, textiles, ceramics, painting, photography, jewelry, and graphic design done by the people who teach these skills. The Gallery is open Monday through Thursday from 8 a.m. to 10 p.m. and on Fridays from 8 a.m. to 5 p.m.

HyperCard classes for all interested staff.

Monday, September 17,	Macintosh Basics
Tuesday, September 18,	Beginning HyperCard
Wednesday, September 19,	Intermediate HyperCard
Thursday, September 20,	Interactive Video with HyperCard

Location: CEN 478, L.C.C. Main Campus

Contact: Anne Bacon (EXT 2436) after September 10 for further information and class reservations.

-ADS-

FOR SALE: 1987 Toyota Celica GT, like new in & out, 22,000 miles (mostly freeway), loaded, red, \$9,200. Mary Forestieri, English, For. Lang., Speech, ext. 2481 or 686-0300.

DECORATING: Would you like a little, or a lot, of help decorating or redecorating a wall, a room, or your entire home? I love working with color, and with the combining of styles and periods of furnishings and accessories. Reasonable fees. References available. Gayle Upp, Decorating Consultant, ext. 0 or 688-3838.

FOR FURTHER INFORMATION ON THE FOLLOWING UPCOMING CONFERENCES, PLEASE CONTACT JULIE BAKER, TEACHING AND LEARNING CENTER, EXT. 2544.



September

MOTIVATING PEOPLE: How to Spark Enthusiasm, Drive and Commitment in your employees. Valley River Inn, September 14, \$105.

MANAGING MULTIPLE PRIORITIES, Salem, September 19, \$99.

Celebrate Excellence in Education with noted educator Dr. Madeline Hunter at the Red Lion Inn, Medford, September 28 & 29, \$110.

Topics covered will include: BUILDING STUDENT SELF ESTEEM, INCREASING MOTIVATION, CLASSROOM APPLICATIONS OF RECENT BRAIN RESEARCH and MANAGING STRESS TO CREATE DIGNITY IN THE CLASSROOM.

HANDLING EMPLOYEE DISCIPLINE & PERFORMANCE MISTAKES, September 25, Valley River Inn, \$105.

HOW TO BE A MORE EFFECTIVE SUPERVISOR, Eugene, September 25, CareerTrack, \$95.

October

NACADA - ACADEMIC ADVISING: CONTINUING VISIONS, RENEWED COMMITMENTS, NEW FRONTIERS, October 14-17, Anaheim, \$200.

THE MINORITY STUDENT TODAY: RECAPTURING THE MOMENTUM, October 7-10, San Antonio, \$345.

TELELEARNING: NEW DEFINITIONS FOR THE '90'S, October 11-13, Miami, \$275.

HOW TO BE A BETTER RECEPTIONIST, Cottage Grove, October 23, \$98.

HOW TO DEVELOP POWERFUL TRAINING PROGRAMS, Portland, October 29-30, \$395. For Supervisors.

MANAGERIAL TECHNIQUES FOR SECRETARIES & ADMINISTRATIVE ASSISTANTS, Salem, October 9, \$165.

HOW TO PLAN, COORDINATE AND PRODUCE VIDEOS, Portland, October 25-26, \$395.

NATIONAL GRADUATE UNIVERSITY'S THIRTY-FIFTH INSTITUTE ON FEDERAL FUNDING, October 2-3, Washington, D.C., \$295.

THE FIRST OREGONIANS - A conference for Indian People, Teachers, and the General Public, October 11-13, Portland, \$30.

LEARNING COMMUNITIES AND THE NATURE OF THE LIBERAL CONVERSATION, Baltimore, October 25-27, \$100.

DESIGNING PROMOTIONAL MATERIALS TO ATTRACT ADULT STUDENTS, San Diego, October 15-16, \$350.

IMPROVING UNACCEPTABLE PERFORMANCE, October 16, Eugene, \$99. (University Seminars, Portland State University). To assist supervisors in upgrading employees' unacceptable performance.

ON TRIAL: THE EDUCATION OF ADULTS, Sponsored by American Association for Adult and Continuing Education, October 28 - November 3, Salt Lake City, \$185.

November



COMMUNITY EDUCATION: PEOPLE REACHING PEOPLE, sponsored by National Community Education Association, November 29 - December 1, San Antonio, \$265.

A COLLOQUIUM: FACULTY ISSUES IN THE '90'S - MOVING INTO A NEW CENTURY, Sponsored by the National Faculty Exchange, November 15-17, San Diego, \$325.

DEVELOPING OUR PROFESSION AND OURSELVES: 1990 PROFESSIONAL AND ORGANIZATIONAL DEVELOPMENT NETWORK IN HIGHER EDUCATION (POD) ANNUAL CONFERENCE, November 1-4, Tahoe City, \$150.



Wednesday, September 12, 1990
12 days until classes begin

THE DAILY

Published for the staff of Lane Community College
Editor: Joan Aschim, Ext. 2591

ALVERGUE ON PROGRAM - Social Science Instructor George Alvergue will speak on "Finding Common Ground" at the 1990 Focus on College Issues (FOCI) conference October 5-6 at Mt. Hood Community College. Sponsored by OEA, OFT, and OCCA, the conference has as its theme, "Keeping Oregon's Community Colleges Healthy." Staff who want to attend may get information from LCCEA officers.

APPRECIATION - "Thank you, Personnel Services staff for assisting our department with all the diverse personnel changes in Industrial Technology Programs. What would we do without your great attitudes and suggestions...Sue, Rose, Mary, Joan, Darlene, Germaine, and Lorraine. Of course, this does not mean an end to all the phone calls. Sorry. You are all very much appreciated. From your 'inside customers,' Carl Horstrup and Colleen Cairney, ITP."

MORE APPRECIATION - "Math instructor Jill McKenney went beyond the call of duty and volunteerism to help an exchange student with a medical emergency this summer. Patcharin Vongsaisuan of Thailand collapsed while on an outing with Jill and Gary McKenney, 'friendship family' volunteers for Lane's international program. Jill called 911, escorted Pat to Sacred Heart, and then to a San Francisco hospital for treatment of a congenital leakage of blood into the spinal column. Jill continued to look after Pat until an aunt arrived from Thailand about two weeks later. Pat is back on her feet and studying business administration at Lane." - Pat Williams, International Program community coordinator, ext. 2239.

ITEMS SOUGHT - The Eugene/Kathmandu Sister City Committee is seeking items exemplifying American culture to send to Nepal. Items such as photographs, drawings, post cards, and books about the Eugene area will be used to educate Nepalese citizens about life in America. Items may be delivered to the City of Eugene Sister City office at 22 W. 7th. Information: Julia King, 346-3537.

SURVEY UNDERWAY - This week about 400 residents of the College District are being asked their opinions of LCC. Conducted by the research firm of Watson and Associates, the telephone survey replicates a similar study done over three years ago. The results will be available in early October. For further information, call Julie Aspinwall-Lamberts at ext. 2576.

EUGENE DOWNTOWN NEEDS YOU! The Downtown Design Studio is looking for ideas and suggestions for revisions to Eugene's downtown mall and plaza. There will be a series of public workshops to explore new design opportunities. The workshops for interested community members are Sunday, September 16, from 2-4:30 p.m. and 6-8:30 p.m. Other workshops are scheduled for September 17 and 18 from 7-9:30 p.m. All will be held at the Downtown Design Studio at 30 East Broadway. Call 484-7020 to reserve your place. We need YOUR ideas on how to make Downtown Eugene a vibrant, exciting place. For further information, call Julie Aspinwall-Lamberts at ext. 2576.

READY TO TEE OFF - This Friday's LCC Foundation golf tournament promises to be a success. Some 92 golfers already have signed up; there are 27 tee sponsors and two major sponsors instead of one as in recent years. Net proceeds go for scholarships. Join the group by calling the Foundation at ext. 2810.

STAFFING NEEDED - Call Charlene Blinn at ext. 2235 to help staff booths: September 15-16, VRC; September 22-23, Eugene Celebration; September 24-25-26 Fall Welcome.

PLEASE REQUEST CLASS MATERIALS EARLY - Printing/Graphics is experiencing the usual flood of duplication requests prior to the beginning of a term. Please submit work orders for material needed the first day of fall term by this Friday, September 14, to assure delivery. Thanks for your consideration.

KEEP THOSE CHANGES COMING - Changes and corrections for the Directory are being accepted through Friday, September 21. Send them to Larry Romine in ADM 211.

ROAD BY FOUNTAIN CLOSED - The road next to the fountain on the west side of the 30th Avenue campus, and its parking spaces, are closed to traffic all this week, September 10-14. LTD buses are using the driveway as a loading zone. The regular bus driveway and loading zone are closed for completion of new LTD shelters. Security officers are available along the driveway from 7 a.m. to 3 p.m. to redirect traffic and assist with handicapped parking. The closure won't interfere with access to the west or south parking lots. Questions: Paul Chase, Security manager, ext. 2561.

FREE PLANNERS AVAILABLE - SELCO has free pocket planners for all staff for the 1990-91 year. Pick one up at the reception desk at Personnel Services.

FREE ICE CREAM - You are invited to join staff and students at the Fall International Student Ice Cream Social on Thursday, September 13, at 3 p.m. in the cafeteria.

CELEBRITY CHOSEN - Maureen Shine, KMTR-TV news anchor, will be official dropper of the numbered ping pong balls over Bristow Square during Fall Welcome Week. She is to toss the balls out a helicopter window about 11:50 a.m. on Friday, September 28. Each number earns a prize for students who retrieve them.

-ADS-

FOR SALE: Daybed with brass back and side rails, includes pillows, shams, bedspread, mattress, and springs, \$100. Bev Kraus, Women's Program, x3078; 345-4005, home.

JOBS: Assistant Chief Flight Instructor, Faculty, closes 10-12-90; Baker Assistant, Cook IV, closes 9-21-90; Computer Programmer, Programmer I, closes 9-24-90. Inquire at Personnel Serv.

FOR SALE: 1982 Merc Capri, \$500 firm, needs new or rebuilt engine. Lorna Funnell, Continuing Education, 726-2252/x2906 or 342-4817.

HOLD THE CANS! Thank you all for your donations of coffee cans. I now have all I need. Also, I am no longer taking orders for blackberries. Thanks again. Cherrill Hemminger, Admissions.

FOR SALE: 1950s solid copper lantern-style electric ceiling light fixture. Takes 3-way bulb and the height is adjustable, \$50. Alice Kaseberg, Mathematics, x2392.

FOR RENT: Beach cabins, one at Yachats - \$55/2 nights; one at Waldport - \$95/2 nights. Many dates available in Sept., Oct., Nov., and Dec. Jan Brandstrom, Counseling, x2204 or 345-1395.

FOR SALE: 1987 Toyota Celica GT, like new in & out, 22,000 miles (mostly freeway), loaded, red, \$9,200. Mary Forestieri, English, For. Lang., Speech, ext. 2481 or 686-0300.

DECORATING: Would you like a little, or a lot, of help decorating or redecorating a wall, a room, or your entire home? I love working with color, and with the combining of styles and periods of furnishings and accessories. Reasonable fees. References available. Gayle Upp, Decorating Consultant, ext. 0 or 688-3838.

Thursday, September 13, 1990
Classes begin September 24.

THE DAILY

Published for the staff of Lane Community College
747-4501, Ext. 2591

CALCULATOR TRAINING OFFERED - Three introductory sessions for Hewlett-Packard programmable calculators are scheduled for users of HP-28S and HP-48SX models. The sessions are from 10 a.m. to noon on Monday, Wednesday, and Friday, September 17, 19, and 21, in Math/Art 243. Topics to be discussed: basic operations, important menus, creating and storing impressions, introductory graphics programming, and managing memory. The information also will be presented at the monthly user group meeting at 7 p.m. on Tuesday, September 25 in Math/Art 257. For more information, contact Steven Myers, Math, ext. 2392.

CORRECTION - When planning your day for Monday, please note that the left-hand page of the centerfold in the printed In-Service schedule should say "Monday, September 17" at the top. Programs on that page include Written Test Construction; Open House at the Teaching & Learning Center; and Leading Collaborative Consensus Decision-Making for Faculty.

RX: THREE TIMES WEEKLY - The Daily is now being published Mondays, Wednesdays, and Thursdays, with extra issues on the other two days of the regular work week as needed. Please send or deliver your material not later than 12-noon of the work day preceding publication of the issue in which you want your news or ad to appear. There's a box marked "The Daily" in front of ADM 210.

ONE MORE TIME - Charlene Blinn still needs help to staff information booths at Valley River Center this weekend, at Eugene Celebration September 22-23, and at Fall Welcome on the main campus September 24-26. She can be reached at ext. 2235.

DUPLICATING DEADLINE - Please get materials you need duplicated for the start of classes to Printing/Graphics by tomorrow, Friday, September 14.

GOLFERS LINING UP - Friday's Foundation golf tournament at last count had 108 golfers signed up (the most ever) 27 tee sponsors (the most ever) and two major sponsors (the most ever). Join them by calling ext. 2810.

IT'S TODAY - You are invited to join staff and students at the Fall International Student Ice Cream Social. It's at 3 p.m. in the cafeteria.

TOMORROW - New student registration begins on Friday, September 14. Many classes are already filled with returning students; additional sections are being scheduled. As of Wednesday, registration was running 140 headcount ahead of last year at this time.

MACNULL, THE NEWEST MAC - The Science Department received a new Macintosh SE/30 computer system on loan from Apple Computer on September 6. It will be used for research and development of interactive video training programs for science classes, reports Department Chair Tom Wayne. Staff had been using a computer belonging to Richard Null, who was able to take it back home. In appreciation of Richard, staff named the new computer MacNull.

UNITED WAY UNDERWAY - Between now and October 12, staff are invited to become part of this year's United Way effort. The goal is \$12,645. Campaign leader again this year (after setting a record last year) is Jane Wojcik of Health Occupations. Please respond when the appeal appears in your mail box.

PLANNING/BUDGETING - Middle managers meet Friday (tomorrow) morning at 8:30 in Forum 308 to discuss the planning and budgeting process. They'll meet again on October 10 at 1:30 p.m. in Forum 308 to review forms and packets to be used in the budgeting process.

A BIG THANKS! To Jerry Langdon and especially to Dave Smith of Campus Services, for their help above and beyond the call of duty. - From Terry Lindseth, Wanda Lee, Audrey Razmus, and Sara Ulam of Foodservices.

GRATEFUL DEAD COMES TO KLCC - KLCC 89.7 FM welcomes The Grateful Dead Hour to Thursday nights from 6:30-7:30 p.m. The show will include tapes, interviews, concert information, etc. In another change, Marian McPartland's Piano Jazz moves from Tuesdays to Sunday noon. JazzSunday will follow from 1-4 p.m.

REPORTS WANTED - The Daily wants to expand its coverage of happenings in departments and programs. To that end, here's a report from Mathematics.

PROJECT: SOFTWARE SUPPORT FOR UNDERPREPARED COLLEGE STUDENTS

By Tom Reimer, Chair, Mathematics and Data Processing

The League for Innovation in the Community College and IBM have jointly sponsored a project designed to improve instructional services. The project is to review software for incoming college students who need remediation in the basic skills of reading, writing, and mathematics. The project was written so that participating institutions identify the software for review. A guiding principle is that the software is readily available for a reasonable fee.

Seventy-five reviewers from colleges like Lane Community College were given a computer work station from IBM on permanent loan for software review, with the intention of turning over title at a later date. Each participating institution was to designate reviewers from the three disciplines. At LCC we negotiated for all the machines to be in the Mathematics Department after other departments opted to not participate in the project.

Five Mathematics Department members volunteered to be reviewers: Alice Kaseberg, Dwight Miller, Steven Myers, John Nelson, and Robert Thompson. Their review of software packages has been in addition to their regular teaching loads. Much of the work has been completed this past summer. By their participation, the Mathematics Department at LCC received three computer systems: one each of Model 30-286 80286 CPU, 2 Mb RAM, 1.44 floppy, 30 Mb hard disk, mouse, color monitor, and Proprinter III. Each system is estimated to be worth \$5800.

Each LCC review team member has arranged with software producers for complementary copies of packages to be sent to them for review. A standard review grid was developed by Miami-Dade Community College (MDCC), the League college responsible for implementation of the project. The grid is completed by reviewers for each software package reviewed, and sent to MDCC for compilation. All participating institutions benefit by the hardware they receive, by having direct input to the process of solving the problem of making software available to underprepared students, and will receive the final compilation from all reviewers.

KUDOS - Roger Ebbage of Summer Youth 90 writes to thank Willie Kealoha, culinary arts; Ed Hume, welding; Ann Noble, woods technology; Bob Githens and Betty Svarverud of Mechanics; and Bob Vogel, Pam McClelland, and Myron Cooley of Electronics for their help this summer in informing youth about opportunities in their various career fields....Francisca Middleton of SeniorNet, San Francisco, welcomes Lane to the program and says ours is the first SeniorNet site in Oregon and the fourth community college site in the nation. Others are at Coastline CC in southern California, at Honolulu and Maui CC in Hawaii, and one to open soon at Johnson County CC in Kansas....Student DeAnna Pearl says Charlene Blinn of Counseling "has made a difference in my life" in helping guide her through Lane and the transferring process to Western Oregon State College, where she'll study elementary education....Carl Horstrup of Industrial Technology is thanked by Leslie W. Wheary of The World Affairs Council of Oregon for entertaining a visitor from Denmark as part of the Council's international visitor program.

-ADS-

FOR SALE: Boat, 18' hydroswift, tri-hull, open bow, 40hp outboard motor, w/trailer, \$1,750. Carole Carlson, Campus Services, ext. 0, or 485-7494.

WANTED: Hibachi in good condition. Ann Augard, Computer Services, x2865.

FOR SALE: Daybed with brass back and side rails, includes pillows, shams, bedspread, mattress, and springs, \$100. Bev Kraus, Women's Program, x3078; 345-4005, home.

FOR SALE: 1982 Merc Capri, \$500 firm, needs new or rebuilt engine. Lorna Funnell, Continuing Education, 726-2252/x2906 or 342-4817.

HOLD THE CANS! Thank you all for your donations of coffee cans. I now have all I need. Also I am no longer taking orders for blackberries. Thanks again. Cherrill Hemminger, Admissions.

FOR SALE: 1950s solid copper lantern-style electric ceiling light fixture. Takes 3-way bulb and the height is adjustable, \$50. Alice Kaseberg, Mathematics, x2392.

FOR RENT: Beach cabins, one at Yachats - \$55/2 nights; one at Waldport - \$95/2 nights. Many dates available in Sept., Oct., Nov., and Dec. Jan Brandstrom, Counseling, x2204 or 345-1395.

Monday, September 17, 1990
Classes begin next Monday.

THE DAILY

Published for the staff of Lane Community College
747-4501, Ext. 2591

NEW RV TECH PROGRAM STARTING - Twenty laid-off wood products workers will re-train in a new one-year program starting Monday in recreational vehicle service and repair. Mechanics Chair Ted Kotsakis says Lane joined Southern Willamette Private Industry Council and 10 area businesses to design the program. It's limited at present to dislocated workers; most of the first class comes from Bohemia's Culp Creek mill. Kotsakis says there are 200 unfilled jobs statewide at present. Lane is the fourth such program in the nation; others are at San Diego, Kirkland, Wash., and Orlando, Fla.

PEOPLE WANT TO STUDY AT LANE - A recent survey by Mar%Stat of Eugene says 45 percent of Eugene-Springfield adults want to take courses and most want to attend Lane. Few have child care problems. More on this in future Dailies.

PRESIDENT PRAISED - The continuing praise for the administrative style of President Jerry Moskus was heard again at last week's Board of Education meeting. George Alvergue, Social Science, said he has "never seen morale or spirit as high as it is at this time." He attributes it to Dr. Moskus' "outstanding and very impressive leadership." Darrell Allyn, former president of LCCEF, said "the morale of classified people on this campus is the highest I've ever seen it." He said people "really feel good" about shared decision-making. Current LCCEF President Jerry Sirois shared a "vote of confidence" from that group's executive board. Moskus "has demonstrated that he is a person of vision with strong leadership skills," Sirois said. LCCEA President Jay Marston congratulated the President and College for not commenting publicly about the change in Flight Technology leadership to protect due process. "We see an Administration that respects and demonstrates the value of decency and ethical behavior," he said, "...and finally we see an Administration that protects the rights of due process."

CONCERN EXPRESSED - Gerald Coldeen, a former member of the Flight Technology Advisory Committee, told the Board of Education of his concern about changes in Flight Tech and about its future. He asked that changes be stopped or that the College consider "selling the property while it still has some value." College Attorney Tim Harold advised the Board that it could not respond at this time because the Board is the last step in a grievance process initiated by the former Flight Tech chair. "The Board has a responsibility to maintain neutrality," he said. It was explained at the meeting that Flight Tech officially has no advisory committee at this time because the terms of its members expired June 30 (along with other College advisory committees) and the department failed to nominate anyone last spring for new or continuing membership for the year which began July 1.

NINE HIRED - The Board of Education has approved these staff appointments: John E. del Nero, instructor, Social Science; Robert A. Farrand, interim chair of Flight Technology; Jean A. Geiger, instructor, Business; Stanton Richard Swank, instructor, Science; Joyce E. Garibay, instructor, Health Occupations; James L. Fuller, instructor, Electronics; Jane M. Scheidecker, director of Small Business Development Center; Russell R. Bowen and Alan B. Clark, instructors, Mechanics.

MARKETING DEADLINE NEARS - The 1990-91 marketing budget includes \$6,000 to help individual units promote their programs. This money is available to instructional departments and other units who apply and meet the guidelines. This is the third year of the program. In 1989-90, 18 projects--ranging in size from \$150 to \$750--were funded. The first deadline for applications is October 4. Other application deadlines for the year are November 8, January 10, February 28, and April 4. Copies of the guidelines and applications are available from Diane Dann, Institutional Advancement, ext. 2592.

WHY QUALITY? This Thursday, the Marketing Council is sponsoring a presentation and panel discussion of the American Management Association's number one, best-selling video, "Why Quality?" This 30-minute video demonstrates the importance of delivering quality service to customers-students. Copies of the College's Marketing Plan and a tipsheet, "How to Get the Best From Marketing," will be available. It's in ADM 216 Thursday, from 2:30 to 3:30. Refreshments will be served.

CALCULATOR TRAINING OFFERED - Three introductory sessions for Hewlett-Packard programmable calculators are scheduled for users of HP-28S and HP-48SX models. The sessions are from 10 a.m. to noon on Monday, Wednesday, and Friday, September 17, 19, and 21, in Math/Art 243. Topics to be discussed: basic operations, important menus, creating and storing expressions, introductory graphics programming, and managing memory. The information also will be presented at the monthly user group meeting at 7 p.m. on Tuesday, September 25 in Math/Art 257. For more information, contact Steven Myers, Math, ext. 2392.

ATTENTION CONTRACTED FACULTY: Faculty level change application packets for the 1990-91 academic year are available at the Reception/Information desk in Personnel Services. Completed applications must be returned to Personnel Services NO LATER THAN November 1, 1990.

KEEP THOSE CHANGES COMING - Changes and corrections for the Directory are being accepted through Friday, September 21. Send them to Larry Romine in ADM 211.

FEDERAL GRANT DEADLINES - The Guide to Federal Assistance and other grant information sources are available in the Grant Resource Library in the Teaching and Learning Center. The numbers following the grant titles below refer to pages in the Guide about that program. November deadlines include:

Probably October/November: D135 Educational Opportunity Centers D135
early November: Law Related Education C 61
mid November: Transitional Bilingual Education C77
Special Alternative Instructional Programs C80
(bilingual Ed)
November 1: Younger Scholars, Humanities M83
Media Arts, film and video production M99
November 2: Humanities Projects in libraries and Archives M69
November 5: Student Literacy Corps D101
Undergrad Programs in International Studies and
foreign languages E43
November 8: Business and International Education E29
November 13: Omstrumentation and lab improvement N31
November 15: Instructional Materials Development N1
November 16: Design arts NEA organizations M107

THANKS TO AREA BUSINESSES - Thousands of prizes worth about \$2,000 total have been donated by area businesses for the Fall Welcome. They will be given to students on September 28 via a drop of numbered ping pong balls on Bristow Square. Donors include: Taco Time, Lane Transit District, Bi-Mart, Boise Cascade, Factory Restaurant, Izzy's Pizza, Safeway Stores, See's Candies, Silver Screen Video, Rainbow Mountain Restaurant, Sizzler, J.C. Penney Co., Emporium, Valley River Inn, Delegato's Athletics, and Bijou Theatre.

KLCC WILL BE AT EUGENE CELEBRATION - KLCC will broadcast live from the 5th Avenue Jazz Stage on Friday night, September 21, and all day Saturday, September 22. Friday sounds include Pa' Lante', Bakra Bata', Obo Addy, and Kukrudu. Saturday's broadcast begins at 2 p.m. with The Tones, The Benefactors, Kammerer-Dowd Jazz Quartet, Eugene Jazz Workshop, Thousand Pieces, and Dana Lutes Ensemble.

IN-SERVICE UPDATE - On Thursday, September 20, Sam Graves from Serenity Lane will share information on "Training Supervisors for a Drug-Free Workplace." In addition to supervisory training, Mr. Graves will speak on basic drug and alcohol awareness information useful to faculty in their interactions with students. This presentation is open to all interested staff. Mr. Graves will speak in Forum 308 from 9 a.m. to noon. For further information, contact Harvey Bond, ext. 2178.

-ADS-

COMBINING HOUSEHOLDS SALE: Bedroom set--double bed frame, 9-drawer dresser, mirror, 2-drawer night stand. Dark wood, perfect condition, \$500; Mediterranean-style dining room set--large oval table with 2 leaves, 6 chairs, \$300; Mediterranean-style living furniture--couch, love seat, 2 matching end tables with storage space, 2 large lamps, \$250; 1 brass floor lamp, \$15. Velma Jesser, Business, x2930, or Stephen Hamilton, x2528, or 683-1070 evenings.

FOR SALE: Eagle Crest one-week ownership. Already reserved for spring break 1991. Substantially less than current Eagle Crest selling price of \$12,500. For details, call Joe Freeman, CWE, 344-6468.

FOR SALE: Dining room light fixture, amber globes (5), \$20; Roland Juno I keyboard, Peavy speaker and expression pedal, originally \$700; large freezer (upright), needs to be charged, \$175. Betty Hunt, Computer Services, x2246.

FOR SALE: Boat, 18' hydroskiff, tri-hull, open bow, 40hp outboard motor, w/trailer, \$1,750. Carole Carlson, Campus Services, ext. 0, or 485-7494.

WANTED: Hibachi in good condition. Ann Augard, Computer Services, x2865.

THE DAILY

Published for the staff of Lane Community College
747-4501, Ext. 2591

SURVEY SAYS PEOPLE WANT TO STUDY AT LANE - Report by Julie Aspinwall-Lamberts

In August, Mar%Stat conducted a community-wide survey covering various issues of public interest. At no charge to the college, the survey included a few questions of interest to Lane. Below is a summary of the results.

Background

Four hundred Eugene and Springfield residents were interviewed by telephone. Approximately one-third were from Springfield and two-thirds from Eugene. The respondents were representative of the total population in gender and age distribution. Approximately 83% of the respondents were registered voters.

This sample provides a reliable indication of the community's response to Lane's questions.

Findings

Lane had five questions on the survey, focusing on child care needs and future education or training needs. The results are:

* Child care needs:

- 77% of the respondents have no child care problems.
- child care problems prevented 15 (3.8%) of the respondents from attending school or college.
- those with problems found (a) child care to be too costly, (b) the options to be limited, or (c) the quality to be uncertain or poor.

* Changing jobs or occupations:

- approximately 25% of the respondents are considering changing jobs or occupations.
- 62 (16% of total respondents) would need additional training to support their job change.
- many of those needing further training were uncertain as to the specific field in which they would seek training.
- Lane was the college of choice for nearly 40% of this group. The next most frequently mentioned college was the University of Oregon (26%).
- Lane was chosen because it is less expensive and convenient and provides good training.

* Taking courses for personal or job skill enhancement:

- 45% of the respondents are considering taking some courses for personal or job skill enrichment.
- the respondents provided a long list of desired areas of study. The most frequently mentioned areas were computers, business general studies, and art.
- Lane was the college of choice for nearly 60% of this group. The next most frequently mentioned college was the University of Oregon (9%).
- Lane was chosen because it is less expensive and convenient, provides good training, and has a good reputation. Respondents also liked Lane's variety of classes and the ability to fit LCC's classes into their work schedules (i.e., night courses).

A copy of the tabulation of responses is available in our office. Data are available on the responses by gender, by age group, and by voter registration status.

Summary

Between a quarter and a half of the Eugene-Springfield residents over age 18 are considering further studies for career or personal enrichment reasons. Lane Community College is the institution of choice for these people. Lane is favored because of its cost, convenience, variety of offerings, and reputation.

With a few exceptions, child care problems are not preventing people from pursuing further education or training.

YOUR REACTION/THOUGHTS SOLICITED - The President's vision and guidelines are central to the planning process. As part of the planning process, the President and the Planning-Budgeting Task Force are seeking feedback. Please review President Moskus' "Thoughts" from the September 10 in-service presentation. Will these items give guidance to planning and delivering services in your area? What modifications are needed? Send your reactions to Jerry Moskus in ADM 214 or Julie Aspinwall-Lamberts in ADM 117 by Friday, September 28.

Some Thoughts by President Jerry Moskus from remarks at all-staff meeting on September 10, 1990

Lane's strengths through the years:

commitment, innovative spirit, heroic individuals,
quality teaching and learning, collaboration
Suggested additions: sense of community, openness with civility

What Lane needs to do:

Strengthen the environment for teaching and learning

Improve buildings and grounds.
Eliminate obstacles to student success.
Support Welfare Reform Act participants.
Expand services to dislocated workers.
Expand offerings in outlying areas.
Expand services to senior citizens.
Expand offerings for transfer students.
Include more members of ethnic minorities in teaching and learning.

Build a caring community

Include everyone in decision-making.

- Everyone has a right and a responsibility to be involved in a meaningful way in the decision-making process.
- People who are directly affected by a decision should have input into the decision.
- Decision-making should be conducted openly by consensus rather than through a political process. Decisions should be "win-win" rather than "win-lose."
- Decisions should be made at the appropriate level by authorized or empowered individuals.
- For shared decision-making to work, people must have a sense of the whole institution, not just themselves or their part of it.

Get our financial house in order

Inform voters of services and needs.
Eliminate unnecessary duplication.
Increase partnerships with business and industry.
Reduce expenditures in areas that do the least harm to students.
Reduce student attrition.
Involve everyone in reducing costs and increasing revenues.

I dream of a Lane Community College:

- where people trust each other, respect each other, and work together to provide quality learning experiences;
- where people are empowered to contribute and can become leaders in their own right;
- where the community values and supports us;
- where people experience the joy of teaching and learning.

-ADS-

FOR SALE: Bicycle, 20" Boys BMX style, new, \$40. Dwight Miller, Math, x2392, or 687-1055.

ARISTOCAT needs a home. Very loving female Somali (long-haired Abyssinian) cat, 2 years old, spayed, needs indoor home with lots of loving. Contact Ingrid Gram, Social Science, x2846 or leave message at 2427.

FOR RENT: Beach cabins, one at Yachats - \$55/2 nights; one at Waldport - \$95/2 nights. Many dates available in Sept., Oct., Nov., and Dec. Jan Brandstrom, Counseling, x2204 or 345-1395.

FOR SALE: 1982 Merc Capri, \$500 firm, needs new or rebuilt engine. Lorna Funnell, Continuing Education, 726-2252/x2906 or 342-4817.

FOR SALE: 1950s solid copper lantern-style electric ceiling light fixture. Takes 3-way bulb and the height is adjustable, \$50. Alice Kaseberg, Mathematics, x2392.

Wednesday, September 19, 1990
Fall classes begin next Monday.

THE DAILY

Published for the staff of Lane Community College
747-4501, Ext. 2591

FIRST IN-MALL CHILD CARE CENTER - A LCC graduate and current client of the SBDC opened Oregon's first in-mall child care center today at Gateway Mall in Springfield. Susan DeLoach, 28, earned an associate degree in Early Childhood Education in 1984. She owns Bright Beginnings day care center in Springfield as well as the new facility. She credits LCC for giving her the training necessary for success.

THANKS FOR RESPONDING - The Shared Decision-Making Task Force thanks all staff who have responded to the request for comments on the shared decision-making philosophy and process presented at In-Service. Your support is appreciated and your comments have been helpful. The Task Force's next meeting will be Thursday, September 20, in P.E. 205 at 9:30 a.m. The meetings are open to anyone who would like to attend.

FACULTY OPEN ENROLLMENT - Representatives from OEA Choice Trust and Selectcare are available to answer insurance coverage questions today from 9 a.m. to 12-noon in the northeast corner of the cafeteria. If you're a faculty employee and are interested in changing from one medical insurance plan to another--or adding a dependent to your medical or dental insurance coverage--you may do so during open enrollment from September 1 to September 28. New enrollment forms may be picked up at the reception desk in Personnel Services. All changes and additions received by Marie Nelson, Personnel Services, by 5 p.m. September 28 will be effective October 1, 1990.

LIBRARY BOOKSALE NEXT WEEK - The Library staff will be in the Center lobby next week, September 24-28, from 10 a.m. to 2 p.m. Monday through Friday to sell discarded books and to receive donations of books and materials for possible adding to the collection. If you need help getting your donations from your vehicle to the lobby, call Terria Burch at ext. 2220 or Carol Barton at ext. 2640.

FOUR GRANT OPPORTUNITIES - Come to a meeting to learn about four grant opportunities: 1) FIPSE (Fund for the Advancement of Secondary Education), 2) Charles Lindbergh, 3) NEA/U.S. West Direct, and 4) the AACJC/Kellogg Beacon program. These opportunities emphasize innovation and span the spectrum from the arts to library enhancement to various applications of technology, and they require short, simple applications. Meet us in the Board Room (ADM 216) at 2 p.m. on Friday, September 21. Diane Dann/Nancy Willard. For information, contact Diane at ext. 2592.

WHY QUALITY? This Thursday, the Marketing Council is sponsoring a presentation and panel discussion of the American Management Association's number one, best-selling video, "Why Quality?" This 30-minute video demonstrates the importance of delivering quality service to customers-students. Copies of the College's Marketing Plan and a tip sheet, "How to Get the Best From Marketing," will be available. It's in ADM 216 Thursday, from 2:30 to 3:30. Refreshments will be served.

HEALTH OFFERINGS - Sacred Heart General Hospital is offering free prostate cancer screenings this week by a physician for men over 40. Call 686-7257. Coming up: "Fear of Fat: Living in a Woman's Body and Liking It," October 2, free; "Healthy Living After 55," (nutrition and exercise), October 17, free; "Sleep Disorders Seminar," no date given, free. Call 686-7074. To get a copy of House Call newsletter with a complete listing of seminars, classes, and support groups offered by Sacred Heart, call 686-8340.

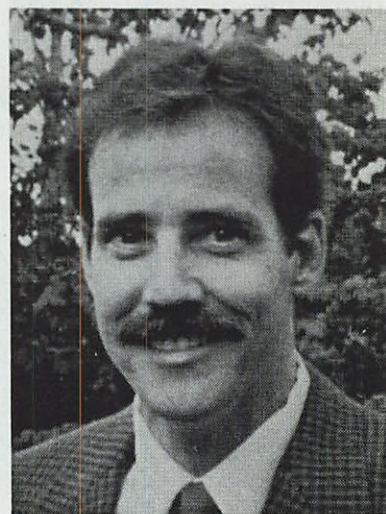
HIGH PASS RATE - Congratulations to the Health Occupations nursing faculty! The 1990 associate degree nursing class passed its state board tests at a 97 percent rate. Only two students failed, while 69 passed. It's not unusual for LCC grads to lead the state's four and two-year colleges and universities in the rate of grads passing state boards.

POSITION OPEN - Personnel Services is accepting applications for a welding technology instructional position. It's temporary, from September 24 to March 15. Deadline for applications is September 20.

GUEST LECTURER - Art Instructor Harold Hoy will lecture on his works in sculpture at the Oregon Art Institute (formerly Portland Art Museum) on September 19.

MEET JAMES CAGNEY

James Cagney was hired in August as Business Department chair. He is from southern California, is married, and has two children. His wife, Patty, is a pediatrician at Island Park Pediatrics in Springfield. James has an MBA from National University in San Diego, an MS in computer science from Northern Illinois University, and a BA in English literature from Creighton University in Omaha, Nebraska. He came to LCC from Tandem Computers where he was employed for seven years. His most recent position with Tandem was as an education developer. He was an adjunct faculty member at California State University at Long Beach from 1984-89.



EIGHTH ANNUAL BIG SUCCESS - Foundation Director Joe Farmer says last Friday's LCC Open golf tournament at Emerald Valley was the most successful ever. It attracted 106 golfers, 28 tee sponsors, two major sponsors--Uncle Bud's Mazda and Bit-by-Bit Computer Rentals--and grossed more than \$20,000. It should net about \$13-14,000 for scholarships, Farmer says. LCC staff who were winners included: Low Gross first place--Steve Wolf and Bob Foster; Low Gross third place--Bob Creed; Low Net third place--Larry Warford; Low Net Mixed Foursome first place--Dale Bates; Low Net Mixed Foursome second place--Shirley Pearson and Joe Farmer.

VOLKSWALK AROUND CLEAR LAKE - The Eugene-Springfield Mossback Volkssport Club is sponsoring a walk this Saturday and Sunday around Clear Lake and along a short stretch of the McKenzie River to Sahalie Falls, all on clearly marked trails. Total distance is 12 km. (7½ miles), which can be done at your own pace, starting any time between 8 a.m. and 2 p.m. at the picnic shelter at Clear Lake Resort. The Resort is located about 23 miles northeast of McKenzie Bridge on Highway 126. Bring family and friends to enjoy the fall colors and mountain air. Picnic in the area or eat at the resort cafe. For further information, contact Bill Buskirk, Science, ext. 2446, or Betty Butler, 343-7179.

WE'RE ON THE WAY - As of Monday, some 60 people had contributed \$4,200 toward this year's United Way goal. LCC is a third of the way toward the \$12,645 goal.

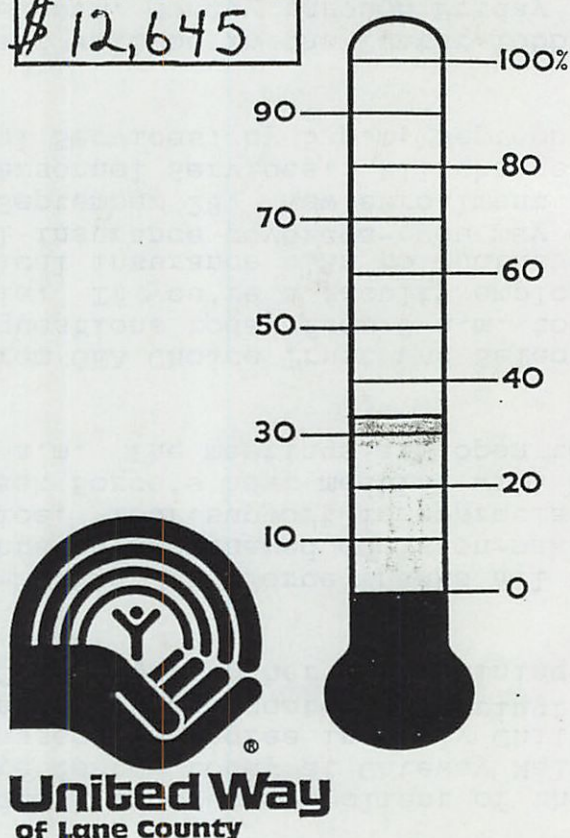
DIRECTORY INFO DUE - Some 56 percent of LCC units have submitted changes and/or additions for this year's staff directory. They're due this Friday, September 21, in ADM 211. Thanks for your help.

TIMING IS CRUCIAL - Be sure to get items to The Daily before 12-noon the day ahead of the issue in which you want your material to run. That provides time for editing, typing, pasteup, duplication at Printing/Graphics, and distribution through the Mailroom. Thanks for your help.

AWARDS - Kellogg Foundation Fellowship Program awards are now available for 1991. Application deadline is December 14, 1990. KNPf awards will be given to 50 individuals of exceptional merit and competence who have exhibited leadership potential in their community, organization, or profession. For application information, contact Julie Baker, Teaching and Learning Center, ext. 2544.

OUR GOAL

\$12,645



-ADS-

FOR SALE: Bicycle, 20" Boys BMX style, new, \$40. Dwight Miller, Math, x2392, or 687-1055.

ARISTOCAT needs a home. Very loving female Somali (long-haired Abyssinian) cat, 2 years old, spayed, needs indoor home with lots of loving. Contact Ingrid Gram, Social Science, x2846 or leave message at 2427.

Thursday, September 20, 1990
Fall classes begin next Monday.

THE DAILY

Published for the staff of Lane Community College
747-4501, Ext. 2591

TODAY - Lee Hindel from Public Employees Retirement System will be in Forum 308 at 1 p.m. to talk about PERS with all interested staff.

TODAY - A video on customer service, "Why Quality?" will be shown at 2:30 p.m. in ADM 216. Marketing Council is host. Refreshments will be served.

DEADLINE TOMORROW - Friday is the deadline for changes to be submitted for the new staff directory. Send or deliver them to ADM 211. Thanks.

PICNIC TOMORROW - LCCEF classified family picnic is Friday, September 21, from 4 p.m. until dusk at Mt. Pisgah Aboretum. See the September 12 issue of the classified newsletter for details. There will be a drawing for gifts from the LCC Bookstore, SELCO, AFT, OFT, and others. Come and join the fun! Note: Swing and graveyard shift employees have a chance to enter the drawing for gifts by turning in the yellow RSVP form to Sally Wilson by Friday morning. Mark on the form, "swing shift" or "graveyard." - Alen Bahret, ext. 2247, for LCCEF Communications Committee

CANCELLED - The September 21-22 Teaching Improvement Process (TIP) workshop at Heceta House has been postponed until spring term. Information: Sharon Thomas, English, TIP Committee chair, ext. 2419.

COME JOIN women of the American Association of Women in Community and Junior Colleges (AAWCJC) on Friday, October 5, 1990 from 8 to 11:30 a.m. in the Boardroom. The LCC chapter of AAWCJC in cooperation with the President's Office will present **"WOMEN'S PATHS TO POWER"** for all women at whatever point on the career path they may be. Natasha Josefowitz, renown author and professor as well as dedicated homemaker, will be the main speaker. The focus will be on challenges and obstacles to the progress of women in the workforce. Cost per person is \$5. Drinks, breakfast rolls and fruit will be served before the telecast. Look for information in your department next week and **PLAN TO ATTEND!** Call Delphine Blankenship with questions at ext. 2308.

HOME GAMES COMING UP - The volleyball team plays in the upstairs gym on this Saturday at 1 p.m. against Linn-Benton, on Wednesday, September 26, at 7 p.m. against Chemeketa; and on Friday, September 28 at 7 p.m. against Mt. Hood.

PLAN AHEAD - Next meeting of the College Council is Tuesday, September 25, 1:30 p.m., ADM 216. It's open to all interested.

DROP BY - LCC will have an information booth at this weekend's Eugene Celebration at city center.

KLCC WILL BE AT EUGENE CELEBRATION - KLCC will broadcast live from the 5th Avenue Jazz Stage on Friday night, September 21, and all day Saturday, September 22. Friday sounds include Pa' Lante', Bakra Bata', Obo Addy, and Kukrudu. Saturday's broadcast begins at 2 p.m. with The Tones, The Benefactors, Kammerer-Dowd Jazz Quartet, Eugene Jazz Workshop, Thousand Pieces, and Dana Lutes Ensemble.

DOING PSAs - TCI Cablevision of Lane County is producing free public service announcements for the Dislocated Worker program. The PSAs will invite employers to call for information. Some program participants will be profiled. TCI will announce later when the PSAs will be aired.

TAX BASE ENDORSED - Eugene Chamber of Commerce endorsed LCC's November 6 tax base proposal on Tuesday.

MORE AVAILABLE - Copies of a fact sheet about LCC's tax base proposal on the November 6 ballot have been sent through campus mail to all staff. If you need additional copies for neighbors, etc., pick them up in front of ADM 211, or call Sandy Young at ext. 2199 and she'll send them through campus mail.

MEET JEAN GEIGER

Jean Geiger was recently hired as a full-time contracted faculty person in the Business Department. Her main concentration is in the office administration area. Jean comes from Pewaukee, Wisconsin. She has an MS in education from the University of Wisconsin, and a BS in business education from the University of Wisconsin. From January 1986 until coming to LCC, she was associate dean of office systems at Waukesha County Technical College at Pewaukee, Wisconsin.



CONSERVATORY DEDICATED - LCC at Florence dedicated "The Nature Conservatory" in Wednesday ceremonies at its campus at 3149 Oak St. Ribbon cutting was done by Lucy Schafer, chair of the Foundation Committee for Innovation which funded work at the site, and Al Owens, retired director of the Florence center. Named and officially opened were the Eldon G. Schafer Botanical Trail, the Al Owens Forest Corridor trail, and the Dr. Albert Brauer Classroom Grove. The trails are each about a half mile long; the grove is an open area with benches. Eldon Schafer was LCC president from 1970-1985; Al Brauer was a charter LCC Board of Education member from 1964-1976. Further development of the Conservatory is expected in future years, since the campus is only beginning to exploit its nearly 20 acres.

APPRECIATION - Thanks to Dave Oatman, director of Customized Training, who shared information about his department with Florence Rotary members Wednesday.

LIBRARY BOOKSALE NEXT WEEK - The Library staff will be in the Center lobby next week, September 24-28, from 10 a.m. to 2 p.m. Monday through Friday to sell discarded books and to receive donations of books and materials for possible adding to the collection. If you need help getting your donations from your vehicle to the lobby, call Terria Burch at ext. 2220 or Carrol Barton at ext. 2640.

FOUR GRANT OPPORTUNITIES - Come to a meeting to learn about four grant opportunities: 1) FIPSE (Fund for the Advancement of Secondary Education), 2) Charles Lindbergh, 3) NEA/U.S. West Direct, and 4) the AACJC/Kellogg Beacon program. These opportunities emphasize innovation and span the spectrum from the arts to library enhancement to various applications of technology, and they require short, simple applications. Meet us in the Board Room (ADM 216) at 2 p.m. on Friday, September 21. Diane Dann/Nancy Willard. For information, contact Diane at ext. 2592.

FACULTY SEMINARS - Information is now available on International Faculty Development Seminars sponsored by the Council on International Educational Exchange. Featured for 1990-91 are "Thatcher's Children: Britain in the 1990s and Beyond," and "Post-Communist Poland: Problems and Prospects," which have September 30 application deadlines. Both seminars are for November 18-24, 1990.

Two seminars for January 1991 have an October 15 application deadline. These seminars are "Understanding Vietnam's Historical Perspectives," and "A United Germany: Implications for the Future."

Contact Julie Baker, Teaching and Learning Center, ext. 2544, for further information.

FALL GRANTS - NAFSA Cooperative Grants Program announces the fall 1990 grant competition. Deadline for submission of completed proposal forms is November 2, 1990. Grants of up to \$6,000 are available for programs that encourage substantial foreign student and faculty interaction or innovative projects designed to encourage foreign students to become involved in U.S. culture and society apart from their studies. LCC has received two NAFSA grants in the past five years. For further information, contact Julie Baker, Teaching and Learning Center, ext. 2544.

-ADS-

RUNNING RELAY TEAM MEMBERS NEEDED. A team that will be running the Butte to Bay October 12-13 is in need of a few more runners. Runners run three legs, each three to five miles long. It doesn't matter how fast you go, you just have to be fun and a survivor. Call Tim or Roxanne Flowerday, x2440, or 747-1423.

FOR SALE: 1973 Super Beetle Volkswagon. Excellent interior, good tires, new stereo. See to appreciate, \$1,495. Call Laurie Wheatley, P/G, x2373, or after 5 at 484-9652.

GARAGE SALE: Three family garage sale, Saturday, Sep. 29, 8-4: Mini-trampoline, candle-making molds, books, 10-speed bike, children's toys, women & children's clothing; Jim Beam collectables; household items; 50-vol. set of Great Books of the Western World. Coburg Rd. to Harlow to Garden Way to Kodiak to 555 Panda Loop. Julie Baker, Curriculum & Scheduling, ext. 2544, or 484-9391.

Monday, September 24, 1990
First Week of Fall Term

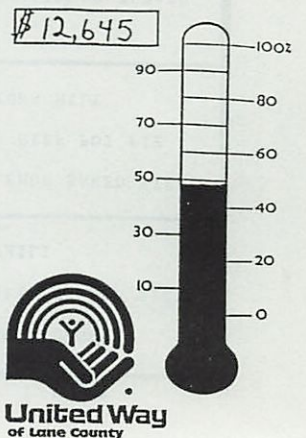
THE DAILY

Published for the staff of Lane Community College
747-4501, Ext. 2591

ENROLLMENT UP 20 PERCENT! LCC already has enrolled 20 percent more full-time equivalent students for fall term than a year ago, with another week of registration to go. "We didn't expect this at all," says Interim Registrar Sharon Moore. "We're just swamped!" Moore says a couple hundred additional head-count wouldn't have surprised her, but she now expects about four times that number. Enrollment has doubled in Flight Technology and is up 20 percent or more in Social Science, Electronics, Mechanics, Health and Physical Education, English and Foreign Language, and Data Processing. Almost as large gains are occurring in Business, Mathematics and Science and nearly every instructional department is expected to grow to some extent. Students will be registering through the term for some classes, but 98 percent of them will have signed up by September 28, Moore says.

ALMOST HALF-WAY - The United Way effort is almost half-way toward the goal of \$12,645. Jane Wojcik, campaign chair, reports that contributions total \$6,012 from 86 people. We're 47.5 percent up the chart at right, with about 14 working days left until the October 12 deadline. If you're waiting until payday at the end of this week to send a check or make a pledge, be sure to mark your calendar to remind yourself. Payroll deduction is possible, too. If you've misplaced the pledge card or information material, call Jane at 2627 or one of the other members of the campaign team: Mary Beth Wilde, Kay Mueller, and nursing student Linda Fiske. They're all at Health Occupations at ext. 2617. Thanks for lending a hand to help all the people in this community who are in difficult times.

OUR GOAL



THIS IS FALL WELCOME WEEK - An information and welcome booth will be located outside between the Health & P.E. and Administration buildings on Monday, Tuesday and Wednesday. Free popcorn and friendly faces are promised students and staff who drop by, says Joyce Kofford of Student Services, who has organized the events. During the noon hours on Wednesday and Friday, bands will play on the north side of the Center building, facing Bristow Square. On Friday, about 11:50 a.m., a helicopter from Flight Tech will carry Maureen Shine, KMTR-TV anchor, over Bristow Square so she can drop about 3,000 numbered ping pong balls. Each can be exchanged for a prize at either a sock hop dance at 7 that night in the downstairs gym or at Joyce Kofford's desk in front of ADM 206 during the week of October 1-5. And, also, there will be a barbeque lunch served Friday noon on the north side of the Center building. Staff are invited to be part of these festivities, though they're not eligible to win prizes unless enrolled in classes. Joyce also asks that staff who possess "Ask Me" buttons wear them this week so students will be encouraged to ask for help as needed.

FEE NOW ASSESSED - Non-student users of Physical Education locker room facilities are now required to pay a fee. For staff, it's \$12 per term; for non-staff, it's the equivalent of a one credit class at \$23. Fees must be paid at Financial Services and receipts submitted to locker room supervisors by the end of the second week of the term (October 5 for fall). Lockers will be cleared after that time. Personal items removed will be held in the issue rooms for one week before being discarded. Questions? Call Lori Bell, ext. 2557, or Bill Schmutz, ext. 2272, equipment rooms supervisors.

FACULTY: LAST WEEK TO CHANGE - If you are interested in changing from one medical insurance plan to another, or adding a dependent to your medical or dental insurance coverage, you may do so during open enrollment through September 28. New enrollment forms are at the receptionist's desk in Personnel Services. Changes and additions must be received by Marie Nelson in Personnel Services by 5 p.m. September 28, if they're to be effective October 1, 1990.

OFFICE MOVED - Athletics is now located in P.E. 204 and can be reached at ext. 2215. Call if you'd like copies of the season schedules for volleyball, cross country, and men's and women's basketball.

MEET JANE SCHEIDECKER

New director of the Small Business Development Center, effective October 1, is Jane Scheidecker. She comes from the University of Oregon, where she has been associate dean for development since 1986. She has owned and operated a bakery, restaurant, and tour company. From 1974-1980, she taught foreign languages at LCC. She has two masters degrees, one from the American Graduate School of International Management in Arizona, and another from the University of Washington. Her bachelors is from Eastern Montana College.



FIVE WIN DRAWINGS - "Thank you for coming to the first floor Administration open house on September 12. The winners include: Personnel Services-- Renaissance Room lunches to Bill Fletcher, Roxanne Flowerday, and Pat Dickover; Financial Services--Renaissance Room lunches for two to Mari Reed, and two tickets for U.O. vs. Idaho football game to Cindy Dietz. She guessed that 67,321 accounts receivable statements were processed in the year preceeding September 1 (the correct number was 71,362). Research, Planning and Evaluation will hold its drawing on October 26 when the fourth week headcount report is available." - Judy Ward, Personnel Services

1,700 PAYCHECKS PER MONTH - You may not have been itching to know this, but the average number of paychecks issued per month is 700 to half-time or more employees, 700 to less than half-time employees, and 300 to work-study students. Thanks to Darlene Turpin of Personnel Services for the estimates.

PRESENTORS SOUGHT - If you'd like to be considered as a presenter at the Student Success Strategies Conference in Portland February 15-16, 1991, contact Joyce Kofford now at ext. 2315. Deadline for proposals is October 15. K. Patricia Cross is keynote speaker at the conference, for which the theme is "Students Succeeding In A Global Society." Call Joyce for more details.

HELP WOMENSPACE - "Volunteers are needed for the Womenspace 1991 auction. Come to a fun, informational potluck with auctioneer Sid Voorhees on Sunday, September 30, 4 p.m., at 1950 Friendly St., Eugene. Learn how you can give a few hours to help this important project. Help us help victims of domestic violence." -Sue Thompson, Health & Physical Education, ext. 2552, or 689-4487.

THIS WEEK AT FOODSERVICES -

	MON	TUE	WED	THUR	FRI
SOUP	OREGON VEGETABLE CANADIAN CHEESE CHILI	CREOLE CREAM OF CORN AND TOMATO CHILI	ITALIAN PIZZA POTAGE PARISIENE CHILI	HAM AND BEAN TOMATO CHILI	CORN CHOWDER BEEF TOMATO RICE CHILI
CAFETERIA	CHUNK O CHEESE MEATLOAF TURKEY STEW CORNED BEEF ON RYE WITH SWISS	ROAST BEEF MACARONI & VEGGIE CASSEROLE SAUERKRAUT AND CHEESE SAN.	SPAGHETTI WITH MEAT SAUCE BEEF AND POTATO CASSEROLE PIZZA BURGER	SWEET & SOUR PORK OVER RICE HAMBURGER CASSEROLE B.B.Q. PORK SAN.	LEMON BAKED FISH BEEF POT PIE TUNA MELT
MAIN LUNCH	SCALLOPED POTATOES	CREAMED HAM ON CORNBREAD	ITALIAN RIGATONI	PORK CHOW YUK WITH NOODLES	SCALLOPED POTATO AND HAM
VEGETARIAN	POTATO PANCAKES	SUBJI	ZUCCHINI CASSEROLE	TOMATO SPINACH BAKE	RICE PILAF
VEGGIE	BROCCOLI STEWED TOMATOES MASHED POTATOES	MEXI CORN BEETS MASHED POTATOE	CARROTS ZUCCHINI MASHED POTATOES	MIXED VEGETABLES CAULIFLOWER WITH CHEESE SAUCE MASHED POTATOE	PEAS AND CARROTS LIMA BEANS MASHED POTATOES
SNACK BAR	CHUNK O CHEESE MEATLOAF	ROAST BEEF	SPAGHETTI WITH MEAT SAUCE	SWEET & SOUR PORK OVER RICE	LEMON BAKED FISH

-ADS-

FOR RENT: Two bedroom house. Carpet, appliances. Close to South Eugene High, Roosevelt Middle School, East Side Elementary, UofO, and LCC. Large, fenced back yard. Close to Amazon Park and shopping centers. \$600 + \$175 deposit. Betty James, Business, x2157, eves. 345-7962.

FOR SALE: Glass top dining room set with six blue upholstered chairs. Brass legs. \$295. Will accept payments. Betty James, Business, x2157, evenings 345-7962.

Wednesday, September 26, 1990
First Week of Fall Term

THE DAILY

Published for the staff of Lane Community College
747-4501, Ext. 2591

CONSULTANT CHOSEN - Dr. David W. Andrews, president of Family Support Systems of Eugene, has won a \$7,000 contract to develop a plan to meet child care needs of LCC students. He will be assisted in data development by Jennifer Strayer, a graduate student in counseling at the University of Oregon. A preliminary report is due December 1 and a final report by February 1, 1991. Andrews has masters and doctoral degrees in child development and has been connected with child care programs at Oregon State University, Linn-Benton Community College, and Children's Services Division, Adult and Family Services, and other groups and agencies. He formerly administered OSU's Human Development and Family Studies Department. He has published 16 articles on child development in refereed journals. Strayer's work at University of Oregon has included assisting with child development research, counseling, and teaching in the child lab. The contract was awarded by the College President on the basis of recommendations made by a committee which considered five applicants. Committee members included Joan Ryan, Kate Barry, Georgia Fryback, Linda Riepe, Vincent Jones, Daniel Christensen, and Michael Omogrosso.

FACULTY COUNCIL TO MEET - Faculty Council meets this Thursday, September 27, from 3 to 5 p.m. in the Board Room, ADM 216. The Council will be meeting regularly on the second and fourth Thursdays of each month at 3 p.m. in ADM 216.

TELECONFERENCE SCHEDULED - "Women's Paths To Power," a teleconference from El Cajon, Calif., will be seen in the LCC Board Room on Friday, October 5, from 8-11:30 a.m. Natasha Josefowitz, author, professor, and homemaker, will share her philosophy while responding to telephone questions. The LCC chapter of the American Association of Women in Community and Junior Colleges and the LCC President's Office are co-sponsors locally. Cost is \$5 per participant and includes a continental breakfast. To register, call Delphine Blankenship at ext. 2308.

THANKS EXTENDED - The workworking instructors thank electricians Darrell Allyn, Marvin Luzier, and Ken Sprague; grounds worker Guy Harshbarger; and Campus Services Director Paul Colvin for giving weekend time off to restore electricity needed in the Industrial Technology Programs woodshop so that classes could be held Monday. We appreciate your dedication. - The ITP staff

TEAMS MEMBERS SOUGHT - A Management Professional Development Team is being organized. Persons who'd like to serve should contact Dr. Larry Warford at ext. 2202 by October 1.

DISPLACED WORKERS ON CAMPUS - About 180 laid-off Weyerhaeuser workers began career planning and job search workshops Monday through the Training and Development Department. Weyerhaeuser is funding the training, which includes two weeks of job search training and eight weeks of access to the department's job search resource room. About 60 workers also have enrolled for credit classes at their own expense.

WELLNESSERS NEEDED! The Wellness Committee is seeking new members for 1990-91. If you are interested in helping to plan and implement staff wellness activities at LCC, please contact Judith Gabriel at ext. 2699 or Charlotte Brown at ext. 2181.

EXTENDING SERVICE - College High has added three additional high schools to the list of those offering college credit through LCC. Coordinator Judith Gabriel reports that the three-term introductory sequence in biology is now being offered at Willamette, Springfield, and Thurston High Schools.

WELLNESS MEETING OPEN - The Wellness Committee will meet Tuesday, October 2, at 2 p.m. in P.E. 205. The meeting is open to all interested.

SEE TIBETAN SLIDES - You are invited to a slide show of rare slides of Tibet, presented by Susan Thiele, adventure guide and photographer from Mountain Travel in San Francisco. The show is Thursday, October 4, at 7:30 p.m. at Lamb Cottage in Skinner's Butte Park. A donation of \$3-\$5 on a sliding scale is requested to benefit the Campaign for Tibet, a Tibetan human rights organization. For more information, call Shan Titus, Admissions, ext. 2688, or 683-1873.

MEET JOYCE E. GARIBAY

New coordinator of the Medical Office Assisting program in Health Occupations is Joyce E. Garibay. She succeeds Norma Stevens, who retired. Garibay will be CWE coordinator for MOA and will teach such courses as Medical Terminology and Medical Law and Ethics. She comes from the Lane Individual Practice Association, where she has been executive secretary and administrator for the past two years. She formerly was a placement coordinator for the Lane County Medical Society for seven years and co-owner of Garibay Heating. She has a bachelor degree in sociology from University of Oregon.



THANKS FOR HELPING - Much appreciation to the volunteers who staffed the LCC information booths at Valley River Center and the Eugene Celebration. Special thanks to Chuck Reid and Jerry Langdon of Campus Services. Reid handled a 7 a.m. setup and Langdon did the take-down on Sunday evening.

VRC Volunteers: Sandy Young, Laura Ory, Sally Wilson, Kay Mueller, Izetta Hunter, John Bernham, Charlene Blinn, Joyce Kofford, George Alvergue, Jim Ellison, Julie Aspinwall-Lamberts, Diane Dann, Ginger Yamamoto, Dick Hillier, Peggy Jellson, Kim Poffenberger, Larry Romine.

Eugene Celebration Volunteers: Joyce Kofford, Charlene Blinn, Kim Poffenberger, Kay Mueller, Evelyn Nagle, Marilyn Kosinski, Joe Farmer, Tom Birkenhead, Larry Warford, Lorraine Allyn, Jim Ellison, Julie Aspinwall-Lamberts, Steve Shaw, Lorna Funnell, Steven Myers, Maxine Frauman.

- Charlene Blinn, coordinator

MARKETING DEADLINE NEARS - The 1990-91 marketing budget includes \$6,000 to help individual units promote their programs. This money is available to instructional departments and other units who apply and meet the guidelines. This is the third year of the program. In 1989-90, 18 projects--ranging in size from \$150 to \$750--were funded. The first deadline for applications is October 4. Other application deadlines for the year are November 8, January 10, February 28, and April 4. Copies of the guidelines and applications are available from Diane Dann, Institutional Advancement, ext. 2592.

FACULTY: LAST WEEK TO CHANGE - If you are interested in changing from one medical insurance plan to another, or adding a dependent to your medical or dental insurance coverage, you may do so during open enrollment through September 28. New enrollment forms are at the receptionist's desk in Personnel Services. Changes and additions must be received by Marie Nelson in Personnel Services by 5 p.m. September 28, if they're to be effective October 1, 1990.

USED BOOKS FOR SALE - Technology, social science, mass communication areas: Alert your students to the Library's Center Lobby used book sale all this week from 10 a.m. to 2 p.m. Usual prices are \$1 hardbound, 50¢ paperbound. During Fall Welcome Week, any donations to the sale also are welcome. Campus recycling will claim those unsold, so bring in anything in the book line that you need to get off your shelves.

-ADS-

COMBINING HOUSEHOLDS SALE: Bedroom set--double bed frame, 9-drawer dresser, mirror, 2-drawer night stand. Dark wood, perfect condition, \$450; Mediterranean-style dining room set--large oval table, 2 leaves, 6 chairs, \$300. Velma Jesser, Business, ext. 2930, or Stephen Hamilton, Business, ext. 2528, or 683-1070 evenings.

FOR SALE: Eagle Crest one-week ownership. Already reserved for spring break 1991. Substantially less than current Eagle Crest selling price of \$12,500. For details, call Joe Freeman, CWE, 344-6468.

GARAGE SALE: Three family garage sale, Saturday, Sep. 29, 8-4: Mini-trampoline, candle-making molds, books, 10-speed bike, children's toys, women & children's clothing; Jim Beam collectables; household items; 50-vol. set of Great Books of the Western World. Coburg Rd. to Harlow to Garden Way to Kodiak to 555 Panda Loop. Julie Baker, Curriculum & Scheduling, ext. 2544, or 484-9391.

FOR RENT: Two bedroom house. Carpet, appliances. Close to South Eugene High, Roosevelt Middle School, East Side Elementary, UofO, and LCC. Large, fenced back yard. Close to Amazon Park and shopping centers. \$600 + \$175 deposit. Betty James, Business, x2157, eves. 345-7962.

FOR SALE: Glass top dining room set with six blue upholstered chairs. Brass legs. \$295. Will accept payments. Betty James, Business, x2157, evenings 345-7962.

Thursday, September 27, 1990
First Week of Fall Term

THE DAILY

Published for the staff of Lane Community College
747-4501, Ext. 2591

TODAY - Faculty Council meets at 3 p.m. in ADM 216. It's open.

GREEN LIGHT FOR UNITY CONFERENCE - A proposed "unity" conference for timber people, environmentalists, and others got a blessing from College Council Tuesday. Jerome Garger, English, and Dennis Gilbert of the UofO Physics Department will lead efforts to put together a December 1 meeting built around economic transition. Civil discussion is a goal. The session would be in the Theatre and would be co-sponsored by LCC, the League for Innovation in the Community College, and various local groups.

In other business, College Council agreed with Campus Services Director Paul Colvin that a low tech approach should be taken in regard to use of pesticides and herbicides to control weeds. Chemicals will be used only when it's a must. Council agreed that a developer of a proposed housing project to the northeast of the main campus should be informed that LCC can't say it's "essential to the College operation." A strongly worded policy on a drug-free work place is being reviewed. Interested persons can get copies from College Council members or Personnel Services. Council heard a proposal from Office of Instruction to add a grants coordination-curriculum development position. The matter will be reviewed again at the next meeting on Tuesday, October 9, 1:30 p.m., in ADM 216.

PLACE CHANGED - Wellness Committee meets Tuesday, October 2, 2 p.m., in Health 246. It's open.

TIME RUNNING OUT - The Library's used book sale in the Center Lobby ceases after fever-pitched sessions today and tomorrow from 10 a.m. to 2 p.m.

FRIDAY EVENING - A reception for LCC art faculty, whose works are now on display in the Art Department Gallery, will be held from 7:30 to 9:30 p.m. Friday in the Gallery. You're invited.

THANK YOU - "A great big thanks to Marie Matsen, Research, Planning, and Evaluation, for helping pull out statistical information for the year-end report to the State, information we didn't know we needed until the last minute. Marie worked with Margie Hanna in our department and they both did a great job. Thanks!" - Pauline Moso, Abult Basic and Secondary Education

TO REACH CHILD CARE CONSULTANT - Dr. David Andrews has an office in Health 111; his extension is 2530.

TIME CHANGE - Classified Council Organizing Committee meets with President Jerry Moskus on Wednesday, October 3, 3:30 to 5 p.m., in P.E. 205. Topic: How the Classified Council might fit into College governance processes. The meeting is open to all who want to attend. -Marie Matsen, Research, Planning, Evaluation

THE UNITED WAY— IT BRINGS OUT THE BEST IN ALL OF US

The United Way is a network of services that touches all of us in some way.

United Way stretches the community service dollar by coordinating individual and corporate contributions with the community service organizations that can turn those dollars into action. The United Way distributes your donations to agencies and programs in your community. This distribution is carried out by volunteers—some may even be your neighbors.

United Way dollars help provide these and other community services:

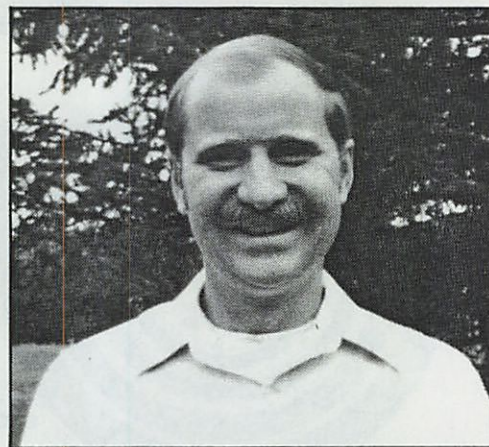
- Adoption, children's homes, family service centers, human resource services
- Drug and alcohol abuse centers
- Child and spouse abuse aid, runaway hotlines
- Counseling and mental health services
- Crisis hotlines, traveler's aid societies
- Child care programs
- Emergency shelter, food centers
- Job training, employment assistance
- Disaster relief
- Handicapped services
- Health services, home health services
- Personal development programs (such as YWCAs and YMCAs)
- Senior's services



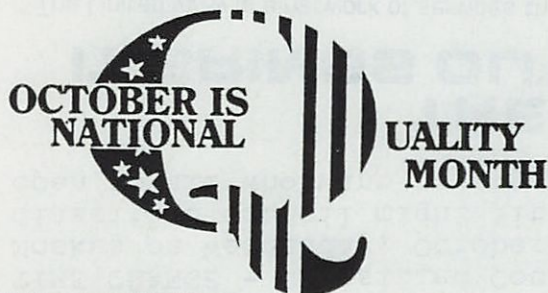
It's good to know the United Way is working to help agencies to provide these services in our community—and it's good to know we can help the United Way, too! You will help when called on, won't you?

MEET ALAN B. CLARK

Journeyman Fleet Mechanic Alan B. Clark, a part-time Diesel Technology instructor for seven years, is now teaching full-time. He succeeds Daryl Jossart, who retired. Clark has been a mechanic for Rex Myers Transfer for 11 years and formerly was an aircraft mechanic in the Air Force. He earned an associate degree at LCC in 1981.



PROOFREAD YOUR SECTION OF DIRECTORY - Galleys for the new Staff Directory will be available for proofreading on Tuesday, October 2, all day, on the counter in front of ADM 211. Each department is invited to send a representative to look over the type, make corrections, make changes, and get everything in order for the press run. Thanks to everybody for making extra efforts to help us get out the directory earlier than ever this year.



What is QUALITY?

PRIDE—satisfaction that comes from a job well done.

PRODUCTIVITY—time saved in doing things right the first time.

EFFICIENCY—the act of doing things quickly and correctly.

TIMELINESS—meeting a schedule and being on time.

FLEXIBILITY—willingness to change to meet demands.

PREVENTION—eliminating problems before they occur by designing excellence into every product and service.

FAVORABLE PUBLIC OPINION—customers equating the company name with quality.

CUSTOMER SATISFACTION—delight by the ultimate judge in how well products and services measure up.

Dr. Ramaley to keynote FOCI conference

"Keeping Oregon's Community Colleges Healthy" is the theme for the 1990 Focus on Community College Issues Conference set for Oct. 5-6 at Mt. Hood Community College.

Faculty, staff, administrators, board members and interested parties are invited to attend the annual conference which begins Friday morning and concludes Saturday after lunch.

Sponsored by the OCCA, Oregon Education Association and the Oregon Federation of Teachers, the conference workshops will review the current health of the community colleges and the political action necessary to improve the situation.

Dr. Judith Ramaley, president of Portland State University, will speak on the linkages between community colleges and

four-year institutions at the Friday evening banquet, while a panel of legislators will be featured at the Saturday luncheon.

Other speakers and workshops will review the impact of Ballot Measure 5, the proposed 1.5 percent property tax limitation, the activities of the Office of Community College Services, and recent public perceptions of community colleges. In addition, workshops have been set to discuss lobbying techniques, a primer on how the legislature operates, and how to strengthen coalitions to work better for community colleges.

Registration for the conference is \$45 before Sept. 29 and \$55 the day of the conference. For more information about the conference, call OCCA at 399-9912.

-ADS-

FOR SALE: 10 gal. fish aquarium. Complete set-up with light, pump, heater, gravel, and other accessories. \$30. Maureen Rice, Health Occup., x2633, or 746-4450.

FOR SALE: United Airlines voucher, good anywhere United flies. \$200 value, sell for \$150. OBO. Expires 11-30-90. Harold Carothers, Foodservices, x2671.

FOR SALE: 1987 Winnebago motor home. Fully self-contained, PS, PB, cruise, air, AM/FM, cassette, 22,600 miles, excellent condition. Harold Carothers, Foodservices, x2671.

FREE: Classified ads in The Daily, for staff members. Send to ADM 210. Include first and last name and dept. Will run several times as space permits.

HUGE YARD SALE! Just about anything you can think of, we've been collecting it for a year. Office equipment, furniture, clothing, and on and on. Gross profits help support activities of LCC's Senior Companion Program and Retired Senior Volunteer Program. The sale is this Friday and Saturday, September 28 and 29, at the SCP-RSVP offices at 673 W. 10th, Eugene, all day. Drop by for great buys. Sandra Jones, director, SCP, 683-8043.

WRITE YOUR MEMOIRS - Save memories of your family's experiences for your children and relatives. I'll help you to write about events clearly and to describe places and people in ways that convey images and atmosphere. If you wish, I'll proofread for you and make arrangements for typing, duplicating, and binding. Washinton Abbey will host my classes, where the first session, FREE, will be on Oct. 15, 1-2:30 p.m. You may register immediately after this session for the remaining six classes, which cost \$50. Your family and friends will treasure this personal gift. For a brochure, call Nan Phifer, Adult High School, x2214, or 686-8821.

COMBINING HOUSEHOLDS SALE: Bedroom set--double bed frame, 9-drawer dresser, mirror, 2-drawer night stand. Dark wood, perfect condition, \$450; Mediterranean-style dining room set--large oval table, 2 leaves, 6 chairs, \$300. Velma Jesser, Business, ext. 2930, or Stephen Hamilton, Business, ext. 2528, or 683-1070 evenings.