

Thursday, November 1, 1990
Sixth Week of Fall Term

THE DAILY

Published for the staff of Lane Community College
747-4501, Ext. 2591

TODAY

- All Saints Day Mass, 12-noon, PE 214
- Retirement party for Howard Bird, 2-3:30 p.m., PE 205
- "Collaborative Drawing" slide-lecture with Craig Spilman, 3 p.m., CEN 310; followed by group drawing session in M&A 131
- Men's basketball scrimmage, here, with Western Baptist, 4 p.m.
- Final day of telephone campaigning, 6-8 p.m., U.S. Bank, 8th & Willamette

INTERVIEW TOMORROW

Dr. Richard Brightman, director of educational services at Coast Community College District, interviews tomorrow, November 2, for vice president for instruction. The day-long session includes an open meeting from 3:15-4:15 p.m. in Forum 309. Brightman is the third candidate to be interviewed. Two other semi-finalists have been interviewed; two more will be on campus November 7 and 9.

U.S.S.R. SPEECH

Visiting soviet scholar Alexander "Sasha" Kravchenko will speak on "Prospects for Peace Within the U.S.S.R." in Jerome Garger's Peace Studies class at 1 p.m. tomorrow, Nov. 2, in APR 214. Staff, students, and the public are invited to attend. - Joe Kremers, Social Science, ext. 2434

TRACK MEET SATURDAY

A crowd of about 5,000 including 700 runners will be here for state high school cross-country championship races. The east entrance road to campus will be closed for runners. The west entrance road will be involved in traffic delays from 10:30 a.m. on as cars are stopped so that tickets can be sold; expect delays of up to 25 minutes. LCC staff and students who provide identification will gain free admission to get to their classes or work.

PRINTMAKERS EXHIBIT

Prints by eleven Eugene artists will be exhibited in the Art Department Gallery from November 13 through December 7. The prints include etching, silkscreen, collographs, monoprints, lithographs and relief printing. The artists are Jon J. Cruson, Mary Dole, Dennis Gould, Julie Hershner, Jani Hoberg, K.C. Joyce, Julia O'Reilly, Ken Paul, Margaret Prentice, Lauren Sauvage and Craig Spilman. Gallery hours are Monday through Thursday from 8 a.m. to 10 p.m. and Friday from 8 a.m. to 5 p.m.

RETIRED

Ellen C. Ness retired October 31 after 10 years as a clerk for the Senior Companion Program. Through the years, she did everything from receptionist work to bookkeeping, to operating a computer, to helping train the 90+ Companions. "I'm not going to be bored" in retirement, she assures. Her plans are to continue helping others. "I've loved the Senior Companions," she says, "and will go right on doing volunteer work for them." She'll teach computer skills, help people do genealogies, and just bought a new sewing machine.

WOMEN IN AMERICAN HISTORY

Two video showings will be held to preview a four-part documentary of the experiences and contributions of women in American history. Staff and students are welcome. The documentary is a new release from the National Women's History Project. The series is especially strong in its multicultural approach to history. The video will be shown 3-4 p.m. on Thursday, November 8, in the Women's Center; it repeats at 9:30 a.m. on Friday, November 9, in the Multicultural Center. - Jill Bradley, ext. 2352.

SHARE THE HOLIDAYS

Some international students at Lane are without roommates or family and may spend their holidays alone. Would you like to share your Thanksgiving dinner? Lane's International Students office has a goodwill program to place students in local homes on special occasions and holidays. It's an opportunity to share American traditions with students who are away from home. If you can add one or more students to your dinner table, call Pat Williams, ext. 2165.

WELLNESS NEWSLETTER AVAILABLE

Extra copies of the November issue of Well, Well, Well are available from Sandy Young at ext. 2199.

THANKS FOR CANVASSING

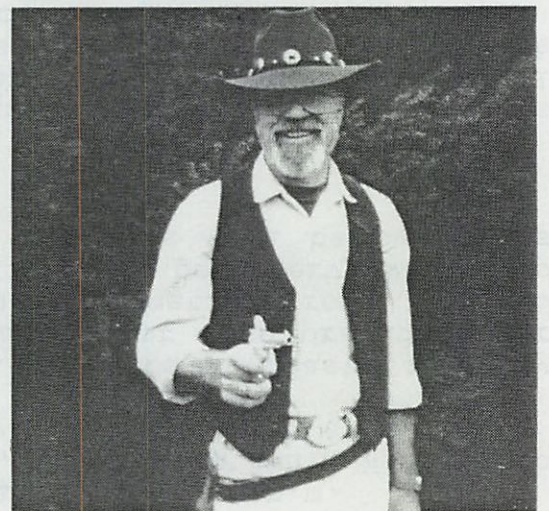
A big thanks to the folks who canvassed on Saturday to get out the vote: Jordan Allen, Mark Andersen, Matthew Auxier, Chris Bennett, Jason Brandon, Fred Brockmann, Allen Coleman, Matthew Eason, Jason Else, Bob Foster, Chad Gosser, Robert Hammitt, Ted Hobgood, Scott Holmberg, Blake Jonas, Daniel LePelley, John Myers, David Nelson, Jeffery Nelson, Arlie Nickerson, David Nix, Chris Page, Steve Peery, Jason Ringo, Trevor Rust, Thomas Schwarting, Jason Sponh, Michael Swanson, Carson Taylor, Aaron Theabolt, Kai Thillmann, Trace Thompson, Jeff Thrower, Scott Van Norman, Jeff White, Sam Williams, Gary Anderson, Tarley Barber, James Cagney, Joe Farmer, Joyce Godels, Barbara Hasbrouck, Sandy Ing, John Winguist, Sharon Kealoha, Ron Little, Marie Matsen, Adeline Romoser, Darcy Spencer-DeHaven, Susan Swan, Marge Nicholes, Julia Munkvold, Alice Kaseberg, Mark Huntington, Susan Dunne, Larry Murray, John del Nero, Roger Ebbage, Maurine McGory, Elaine Pray, Peter Jensen, Larry Warford, Arden Woods, Leslie Rasor, Michael Omogrosso, Darlene Ogan, Laura Roberts, Rick Freund, Paul Kays, Marge Clune, Julie Aspinwall-Lamberts, Harvey Bond, Jolene Bowers, Bob Creed, Jim Ellison, Jerome Garger, Joe Kremers, Elaine Matchett, Maureen Rice, Jill McKenney, Ken Murdoff, Richard Null, Anita Overton, Ann Prengaman, Pamela Robinson, Michael Rose, Tom Rubick, David Sherman, Sally Wilson, Rick Venturi, Shirley Perry, Michelle Scott, Joyce Garibay, Judith Gabriel, Peggy Marston, Sally Peterson, Frank Rossini, Lynne Swift, Beth Webb, Mike Mitchell, Linda Myers, Linda Allen, Lorraine Allyn, Dixie Maurer-Clemons, Jim McCarty, Diane Morrow, Pam Murphy, Joan Ryan, Sharon Thomas, Carol Turnbull, Harry Anderson, Clarice Bates, Doris Burkland, Betty Doerr, Shannon Kracht, Charles Bentz, Patti Basconcillo, Pat Chase, Dave Oatman, Jean Geiger, Jerold Seifer, Myrna Seifert, Rosemary Busby, Jane Wojcik, George Alvergue, Cathy Russell, Debbie Bernhard, Don Strahan, Pat Zeller, Tarry Nanakornpanom, Bruce Vogel, Della Mathews, Kay Smith, Cecilia Combest, Pat Combest, Gail Hemsoth, Lois Frichtl, Rik Boatsman, Elizabeth Simeone, Steve Swisher, Judd Van Gorder, and others. - Scott Carpenter, LCC Advocates

CAMPUS CAMPAIGN COORDINATOR REFLECTS

"I want to take this opportunity to extend a great big thank you to each of you staff and students who have been such a joy to work with, and to each of you for helping coordinate campus activities for the Advocates. My heart is full and I reflect on the many positive responses we've received, especially from the telephone bank canvassing, and your willingness to be of assistance. Now, we are almost over the hump. It's thumbs up and let's keep the work moving and get out that positive vote! Thanks once more. You've made my day." - Howard F. Bird, ext. 2360

BANDIT VISITS CAMPUS

A masked bandit was seen on campus Halloween, soliciting scholarship donations to the Foundation. Foundation officials say the bandit had raised \$50 by high noon. Director Joe Farmer says more than 62 percent of Lane students need some form of financial help, and all scholarship donations are welcome. He says the Foundation awarded in excess of \$45,000 in scholarships in fiscal year 1989-90, and more than \$4,000 in loans.



- ADS -

FOR SALE: Mechanics Dept. person (Ron?) previously interested in my '82 Mercury Capri for under \$500, please call me. Anyone else: this could be a great car to toot around in for someone interested in installing a new engine or rebuilding the old one. All offers considered. Lorna Funnell, Continuing Ed., x2906; or 342-4817 home.

MUST SELL: 1987 Toyota Celica GT, 23,000 mostly freeway miles, 5-speed, tilt, cruise, air, electric antenna & mirrors, Michelins. High book \$9,150; asking \$8,400; will consider offers. Mary Forestieri, E&FL, x2481.

FOOTBALL FANS: To reserve seats to UO-UCLA game on Saturday, Nov. 3, call Cindi Tedder, Mass Comm., x2475; or 345-3511.

FOR SALE: Mountain bike, Diamond Back "Ascent," 15-speed, Shimano components, hardly used, \$325/offer. Marissa Linn, ESL/DTC, x2253, eves; days at 345-0406.

Monday, November 5, 1990
Seventh Week of Fall Term

THE DAILY

Published for the staff of Lane Community College
747-4501, Ext. 2591

CAST YOUR VOTE TOMORROW

ELECTION COVERAGE - KLCC 89.7 FM will provide live election coverage tomorrow starting at 8 p.m.

BOOK SALE TODAY

"Too early for turkeys? We disagree! Check out the Library's Used Book Sale today, Tuesday, and Wednesday, in the Center lobby near the stained glass windows. Lots of books and some surprises. 'New' titles added daily!"
- Carrol Barton, ext. 2640

RETIREMENT PARTY TOMORROW

John Bernham's retirement roast begins at 3 p.m. in the northeast corner of the Cafeteria tomorrow, Nov. 6, hosted by the Counseling Dept. Buck Bailey will be M.C.

INTERVIEW WEDNESDAY

Dr. David Mitchell, associate dean of science and technology at North Seattle Community College, interviews Wednesday, November 7, for vice president for instruction. The day-long session includes an open meeting from 3:15-4:15 p.m. in Forum 309. Mitchell is the fourth candidate to be interviewed. Three other semi-finalists have been interviewed; one more will be on campus Friday, November 9.

POLITICAL MESSAGES CAN BE POSTED

The College's legal counsel advises that campus 'public forum' bulletin boards may be used for political materials as long as all parties are given opportunity to post their point of view. The College does not have to solicit materials from any side. This does not change Student Services Procedures D-5. - Larry Warford, ext. 2302

FLORENCE BEGINS WELFARE REFORM

A statewide welfare reform program begins service in the Florence area today. LCC is operating the program, which provides career-life planning, adult basic education, high school completion and job training for welfare clients. Training & Development Director Patti Basconcillo says 25 adult and 5 teenage clients are expected at Florence. Lane opened a program at its Cottage Grove campus last month. The program also opened in Eugene on Oct. 1 at the Emerald Job Center, former site of Trend College, co-operated by Lane and other organizations.

ATHLETIC EVENTS THIS WEEK

The women's volleyball team will play Portland Community College here at 7 p.m. on Wednesday; and Mt. Hood CC. on Friday in Gresham. The men's basketball team will scrimmage with Southern Oregon State on Wednesday in Roseburg.

BUS PASS COMMITTEE NEEDS FACULTY REP

An opportunity is available for a faculty member to serve on the Bus Pass Task Force Committee. If you're interested, please contact Loring Hummel, ASLCC, ext. 2330.

ALSO PRESENTING

Jane Wojcik was inadvertently left out as a presenter for the state AAWCJC conference to be held Dec. 6-7 in Portland. She will co-present a session on empowerment of support staff with Marianne Kimball, Velma Jesser, Rosemary Busby, and Debbie Powers.

NEW OFFICE SUPPLY CATALOGS ARE IN

The Warehouse has new 1991 Boise Cascade catalogs. Please bring your old catalog to the Warehouse for exchange. Thanks! - Steve Evans, ext. 2453.

Your Vote Counts.

Unconvinced? One vote DOES count!

- One vote decided that Americans speak English rather than German.
- One vote made Texas part of the U.S.
- One vote made Adolph Hitler head of the Nazi party.
- One vote admitted California, Idaho, Washington, and Oregon to the Union.
- One vote saved President Andrew Johnson from impeachment.
- One vote caused Charles I to be executed.

Your vote may not have such drastic consequences. But you never know.

DOWNTOWN OPEN HOUSE SET

The Downtown Center will hold an Open House on National Community Education Day, Tuesday, Nov. 13, from 2-7 p.m. The Center will buzz with special events, tours, workshops, demonstrations, information, refreshments and giveaways. For more information, call 726-2252.

COUNCIL RECRUITING MEMBERS

The Classified Council is about to be officially formulated. Membership on the council will be based on campus location with most locations having more than one representative. For more information about the council or if you're interested in serving, please contact the recruiter assigned to your area: Elaine Matchett ext. 2213 and Charlotte Kudlemeyer ext. 2273, Center building; Kathy Karns ext. 2214, Apprenticeship & Apprenticeship Annex; Alen Bahret ext. 2191, Campus Services, Auto Tech, Air Tech; Rose Arnold ext. 2392, Performing Arts, Math & Art; Jane Wojcik ext. 2627, Health & PE; Marie Matsen ext. 2364 Admin. & Business; Phil Powers ext. 2370, Machine Tech., Electronics, Science; Rosemary Busby ext. 2255, Downtown Center; and Florence and Cottage Grove (one rep each). - Marie Matsen ext. 2364

GRANTS AVAILABLE

The next deadline for applying for marketing grants is Wed., Nov. 8. Contact Sandy Young in Institutional Advancement at ext. 2199 for guidelines and applications.

BANDIT APPREHENDED

The Halloween bandit who collected \$50 for Foundation scholarships was apprehended Thursday. An additional \$45 was found on his person and added to the scholarship fund, says Foundation Director Joe Farmer.

MARKETING WORKSHOP OFFERED

"Marketing Your Product" will be held from 6:30-9:30 p.m. on Tuesdays, Nov. 6-27. This workshop is for owners or managers of small businesses and will be taught by Gerald Jansen. Cost is \$100 plus the \$2 registration fee. For information, contact the Small Business Development Center at 726-2255.

THIS WEEK AT FOODSERVICES -

	MON	TUES	WED	THUR	FRI
Soup	BEEF NOODLE	SPLIT PEA	TACO SOUP	BEAN PASTA	MEDITERRANEAN CHOWDER
	CREAM OF BROCCOLI	CHICKEN JUMBO	WILD RICE	POLISH POTATO	MUSHROOM
	CHILI	CHILI	CHILI	CHILI	CHILI
Cafeteria	BAKED HAM WITH PINEAPPLE SAUCE HAMBURGER PIE PHILLY BEEF & CHEESE	PORK CHOPS WITH DRESSING FRENCH DIP SAN EGGPLANT SAN	CARNE ASADA TAMALE PIE TACO BURGER	SWISS STEAK CHICKEN SALAD SAN PASTRAMI & CHEESE	CAPTAINS PLATTER TUNA POTATO CHIP CASSEROLE BEEF AND SWISS
Mini Lunch	CHICKEN LASAGNA	PORK ALMANDINE	BEEF ENCHILADAS	BEEF STEW	CHICKEN & SPAGHETTI
Vegetarian	VEGGIE FRY	BROCCOLI SOUFFLE	MEXI RICE	MACARONI & CHEESE	CORN FRITTERS
Veggie	BRUSSEL SPROUTS YELLOW SQUASH MASHED POTATOE	GREEN BEANS HOMINY MASHED POTATOES	MEXI CORN PEAS AND CORN MASHED POTATOES	BEETS BROCCOLI MASHED POTATOES	WAX BEANS CARROTS FRENCH FRIES
Snack Bar	BAKED HAM WITH PINEAPPLE SAUCE	PORK CHOPS WITH DRESSING	CARNE ASADA	SWISS STEAK	CAPTAINS PLATTER

1991 CALENDARS benefiting Eugene Emergency Housing are for sale through Susan Sutton in Inst. Advancement, x2593. The theme "A Caring Community" is illustrated through black & white photos. Calendars are \$8. Call x2593.

DONATIONS NEEDED: Please help us make a lounge area for our students. We need two small comfortable chairs, one loveseat, one coffee table, one area rug and a partition. Thank you! Call Kathleen Hoag, ESL, x2253.

FOR RENT: 1-bedroom apartment in Springfield. Available immediately. Water and garbage paid. Weatherized. See at 608 No. 4th, upstairs, right unit. \$285 plus \$250 deposit. Pat Hansen, Business; please call 689-0479.

Wednesday, November 7, 1990
Seventh Week of Fall Term

THE DAILY

Published for the staff of Lane Community College
747-4501; Ext. 2591

TODAY

- Dr. David Mitchell interviews for v.p. for instruction; open meeting from 3:15-4:15 p.m. in Forum 309
- Library Used Book Sale, last day, Center lobby
- Deadline to apply for marketing grants; call Sandy Young at 2199 for info
- Women's volleyball, here, 7 p.m., with Portland C.C.
- Men's basketball scrimmage, with Southern Oregon State, at Roseburg

DIRECTORIES AVAILABLE

Staff directories for 1990-91 are available at the desk of Sandy Young, in front of ADMIN 211. Department secretaries are asked to pick up each department's supply. Thanks for your cooperation.

RETIRING

Edna Kennel, Printing/Graphics designer, has announced her retirement after 25 years at LCC. Her last workday is December 10.

HOLIDAYS THIS MONTH

The College will be closed to observe Veteran's Day on Monday, Nov. 12; and for Thanksgiving on Thursday and Friday, Nov. 22 and 23.

INTERNATIONAL STUDENTS NEED HOLIDAY HOSTS

Would you like to share your Thanksgiving dinner? Lane's International Students office places international students in local homes on special occasions and holidays. If you can add one or more students to your dinner table, call Pat Williams, ext. 2165.

SUPERINTENDENT SPEAKS

Margaret Nichols, Eugene 4-J School District Superintendent, will speak in Jerome Garger's Peace & Conflict Studies class on Friday, Nov. 9, from 1-1:50 p.m. in APR 214. Her topic: "The Role of Education in Combatting America's Obsession with Power." The public and staff are invited. For more information, contact Jerome Garger at ext. 2162 or 2419.

BROWN BAG TALK SCHEDULED FOR TUESDAY

The next Brown Bag Talk sponsored by the Women's Program is Nov. 13 and features "Financial Planning for Everyone." The speakers are Emily Leupold and Susan Miller.

PERSONAL DEFENSE TOPIC OF LECTURE

Womenspace will present a lecture for a personal defense class on Tuesday, Nov. 13, at 10 a.m., in PE 125. Faculty and students are invited to attend. For more information, call Wes Chamberlain, H&PE, ext. 2271.

BOARD TO MEET

The Board of Education meets a week from today, Nov. 14, 7:30 p.m., ADM 216.

DOWNTOWN OPEN HOUSE SET

The Downtown Center will hold an Open House on Nov. 13, from 2-7 p.m. Drop by for tours, workshops, demonstrations, refreshments and prizes.

ELECTRONICS STUDENTS BUILD COMPUTERS

Eighteen computers in a job training program for welfare clients run by LCC and other organizations were built by second-year electronics students at the college. Electronics Department Head Bob Vogel says students have built about 250 computers for college use over the last three years. He credits Jim Keizur for originally proposing the idea of dovetailing college equipment needs with electronics curricula. He says students get practical experience assembling the machines and the college gets quality machines for a competitive price. The service is restricted to college use, says Vogel.

RENNAISSANCE ROOM WILL BAKE YOUR PIE

"Thanksgiving pies! Let us do your holiday baking. We are now taking orders for pumpkin pie (\$6 each); and pecan pie (\$8 each). Please place your order before Nov. 15." - Laurel Henry, Renaissance Room, ext. 2697

ANCIENT FOREST UPDATE

A public meeting, "Ancient Forests: Where We Stand and Where We Are Going," will be held Nov. 14 from 5:30-7 p.m. at the U.O. Law School, Room 129. The meeting is sponsored by the Oregon Natural Resources Council.

POSTER CONTEST ANNOUNCED

The Multicultural Center is sponsoring a cultural poster contest with prizes for first, second and third place. The deadline is December 3. For more information, call ext. 2276.

LEFT OUT BUT NOT FORGOTTEN

Kathy Bates' name was inadvertently left out from a list of volunteers who helped the Foundation with its 1990 Open golf tournament. Kathy was very important to the success of this year's Open, as were all the volunteers. - Joe Farmer, Foundation, ext. 2810

LEAGUE TO VISIT

The League for Innovation in the Community College is sending representatives to Lane on Nov. 29 and 30 to review our membership. The League board voted unanimously to invite Lane to apply for continued membership earlier this fall. A site review is part of the membership continuation process.

CHILDREN'S BOOK FAIR IS NEXT WEEK

The Child Development Center will sponsor a fair of children's books Nov. 13-16 from 8-11:30 a.m. in Health 115. Crystal Baker is chairing the event, which will raise funds for toys, books, records and tapes for the Centers. A wide range of books will be displayed including classics, fiction, biographies, adventure stories, science, nature, crafts, mysteries and a selection of books for infants through first grade.

SEMINARS COMING TO TOWN

Julie Baker in the Teaching & Learning Center has information on dozens of conferences. Contact her at ext. 2544 for details. A current sampling:

- Nov. 13, "Tom Peters Excellence 1990 Seminar", Eugene, \$145
- Nov. 27, "The Working Woman's Stress Management Seminar: How to Find Balance, Feel Great and Perform Better," CareerTrack, Eugene, \$48
- Nov. 28, "How to be the Best Possible Boss," Eugene, \$99

Julie has information for out-of-area conferences as well.

BRING YOUR R.V. IN FOR SERVICE

The Mechanics Dept. is seeking recreational vehicles to be serviced by its new R.V. Service Technician program. Students and instructors will be repairing plumbing, electrical and appliance programs. To arrange for work on your R.V., call Bob Githens, ext. 2388.

- JOB OPPORTUNITIES -

Custodian, Campus Svcs./Housekeeping Dept., Custodian II, closing 11/16/90
Secretary, Mathematics Dept., Secretary II, closing 11/19/90
Instructor, temp. through 6/30/91, Social Science, Faculty, closing 11/21/90


- ADS -

FOR SALE: Canon PC20 cartridge copy machine. Perfect for the small office. Excellent condition. Sold new for \$1,695; my price \$500. Gary Rholl, Business, x2221; or 485-0955.

1991 CALENDARS benefiting Eugene Emergency Housing are for sale through Susan Sutton in Inst. Advancement, x2593. The theme "A Caring Community" is illustrated through black & white photos. Calendars are \$8. Call x2593.

FOR RENT: 1-bedroom apartment in Springfield. Available immediately. Water and garbage paid. Weatherized. See at 608 No. 4th, upstairs, right unit. \$285 plus \$250 deposit. Pat Hansen, Bus.; please call 689-0479.

DONATIONS NEEDED: Furniture needed for ESL student lounge. Call Kathleen Hoag, ext. 2253.



How about joining an
on-campus Macintosh
User Group?

I am trying to organize the first
Macintosh User Group on LCC's campus.
If you are interested in attending the
first meeting, please come to the
Electronics Counter in the Bookstore by
November 15th and sign up, or see me,
Barb Barlow. (LCC's Apple Rep)

Thanks!



Thursday, November 8, 1990
Seventh Week of Fall Term

THE DAILY

Published for the staff of Lane Community College
747-4501, Ext. 2591

VOTERS APPROVE TAX BASE

Incomplete returns as of 3 a.m., Nov. 7: Linn Co., 349 Yes, 617 No; Benton Co., 133 Yes, 343 No; Douglas Co., 1 Yes, 8 No; Lane Co., 52,925 Yes, 41,474 No. Totals: 53,408 Yes, or 56 percent; 42,442 No, or 44 percent.

FROM YOUR PRESIDENT

To LCC Staff:

Thank you for your strong efforts to inform voters. The many hours of personal time, the energy, and the funds which you expended helped our constituency to give us a very solid expression of support and confidence. You are important to the people you help, and to the economic prosperity of the community. An election is the ultimate public opinion poll; our constituents told us Tuesday that we're doing the job they want us to do. Thanks for the hard work and your continuing dedication.

(As to Measure 5, my understanding is that it does not negate the effect of our passing the tax base. Instead, it creates uncertainty about state funding for that portion of our revenue that will be "backfilled" by the state. Let's not worry about it until we have more information.)

Jerry Moskus
President

FROM YOUR BOARD CHAIR

To Jerry Moskus and to our wonderful staff and students and their families from our LCC District; to Scott Carpenter and the LCC Advocates; and to all who have volunteered their services to our community on our behalf; and to my colleagues on the LCC Board of Education:

WOW! Tuesday night at the fairgrounds as we watched the election returns come in, and saw that ever-increasing build-up of voter support, we did not know for sure until Wednesday morning that we had won. I wish all of you could have been there to feel that excitement! Most of those things we have been doing so earnestly the past few months in pursuit of a new tax base, win or lose, are fundamental to the continued success of LCC. If we have made new friends, if we better understand our community, if it is "we," and "us," and "our," then we have gained. Communication, team work, confidence, and enthusiasm are winning words. Yes, winners do have more fun! I thank you for all you have done. Because of you, we can continue with those things we do so well at LCC.

Jim Pitney, Chair
Board of Education

TODAY

- Faculty Council meets at 4 p.m., Admin. 216
- Video showing, women in American history, 3-4 p.m., Women's Center; and tomorrow, 9:30 a.m., Multicultural Center
- Oregon School Activities Assoc. Volleyball Championships AA & B Girls Teams, here, 2 p.m. today through Saturday. No traffic delays expected.

LAST V.P. CANDIDATE INTERVIEWS TOMORROW

Michael Crow interviews Nov. 9 for v.p. for instruction. He is academic dean of liberal arts, business and computer science at Oakland Community College. The day-long session includes an open meeting from 3:15-4:15 p.m. in Forum 309. Four other candidates have interviewed.

DIRECTORIES AVAILABLE

Staff directories for 1990-91 are available at the desk of Sandy Young, in front of ADMIN 211. Department secretaries are asked to pick up each department's supply. Thanks for your cooperation.

MONDAY IS HOLIDAY

The College will be closed Monday, Nov. 12, to observe Veteran's Day. The Daily will be published on Tuesday, Nov. 13.

SENIORNET OPENS TOMORROW

SeniorNet, a program to teach computer skills to older adults, opens its first classroom in Oregon Nov. 9 at Lane's Downtown Center. The program is cosponsored by Lane and Oregon Eye Associates. President Moskus and Dr. Howard Fine of the eye associates are the featured speakers in a dedication ceremony from 11 a.m. to 12 p.m. beginning in Room 202 and moving to Room 004. SeniorNet is an international, non-profit organization with about 3,600 members in the U.S. and Canada. It offers computer classes and an online network to members.

THAI PHYSICIAN TO VISIT LANE

Prof. Dr. Subharee Suwanjutha of Thailand will visit Health Occupations staff and students on Thursday, Dec. 6. Lane is cohosting the pulmonologist's visit with Sacred Heart General Hospital. Dept. Head Doug White says the visit is part of a new international fellowship program sponsored by the American Association of Respiratory Care. Dr. Suwanjutha directs the Division of Pediatric Pulmonology and Intensive Care Unit of the Faculty of Medicine, Ramathibodi Hospital, at Mahidol University in Bangkok.

DOWNTOWN CENTER CELEBRATES ON TUESDAY

The Downtown Center holds an Open House on National Community Education Day, Nov. 13, from 2-7 p.m., Drop by for tours, workshops, demonstrations, refreshments and prizes.

ENGLISH AS A SECOND LANGUAGE FACULTY PARTICIPATES AT CONFERENCE

Instructors Maxine Frauman of ESL and Sharon Sandgathe of Study Skills presented "Cooperative Learning Strategies: From Simple to Complex" at a recent Teachers of English to Speakers of Other Languages (TESOL) conference in Portland. ABE instructor Norm Johnson presented "CALL Today and CALL Tomorrow (CALL is Computer-Assisted Language Learning)" and "An Introduction to CALL." Several other ESL instructors attended the conference: Kathleen Hoag, Demetri Lontos, Jan Lyon, Christine Seifert and Annick Todd. The event was preceded by a successful staff retreat led by Maxine.

NEW OFFICE SUPPLY CATALOGS ARE IN

The Warehouse has new 1991 Boise Cascade catalogs. Please bring your old catalog to the Warehouse for exchange. Thanks! - Steve Evans, ext. 2453.

COUNCIL RECRUITING MEMBERS

The Classified Council is about to be officially formulated. Membership on the council will be based on campus location with most locations having more than one representative. For more information about the council or if you're interested in serving, please contact the recruiter assigned to your area: Elaine Matchett ext. 2213 and Charlotte Kudlemeyer ext. 2273, Center building; Kathy Karns ext. 2214, Apprenticeship & Apprenticeship Annex; Alen Bahret ext. 2191, Campus Services, Auto Tech, Air Tech; Rose Arnold ext. 2392, Performing Arts, Math & Art; Jane Wojcik ext. 2627, Health & PE; Marie Matsen ext. 2364 Admin. & Business; Phil Powers ext. 2370, Machine Tech., Electronics, Science; Rosemary Busby ext. 2255, Downtown Center; and Florence and Cottage Grove (one rep each). - Marie Matsen ext. 2364.

SUPERINTENDENT SPEAKS TOMORROW

Margaret Nichols, Eugene 4-J School District Superintendent, will speak in Jerome Garger's Peace & Conflict Studies class Nov. 9 from 1-1:50 p.m. in APR 214. Her topic: "The Role of Education in Combatting America's Obsession with Power." The public and staff are invited. For more information, contact Jerome Garger at ext. 2162 or 2419.

- ADS -

FOR SALE: 1978 BMW 320i, maroon, one owner (who babied it), \$3,500. Judy Blue Health Occ. x2635; or 484-1563.

PLEASE MARK YOUR CALENDARS NOW! Play for Tupperware: Join Mary Michaud, x2939, and Lorna Funnell, x2906, for free refreshments and a no-charge bingo party from 1-2:30 p.m. on Saturday, Dec. 1, at 805 Wilson (off W. 11th - Vic Alfonso Toyota faces Wilson). If you bring a non-LCC friend, you win something extra. Please RSVP by calling dealer Kristy Shaddy at 345-7020 and say you're with Lorna or Mary from LCC; or you may RSVP with us. If you want to book a party yourself, please credit me or Mary when you call Kristy. Thanks, and see you there for a real fun time! - Lorna Funnell, Cont. Ed.

FOR SALE: Canon PC20 cartridge copy machine. Perfect for the small office. Excellent condition. Sold new for \$1,695; my price \$500. Gary Rholl, Business, x2221; or 485-0955.

1991 CALENDARS benefiting Eugene Emergency Housing are for sale through Susan Sutton in Inst. Advancement, x2593. The theme "A Caring Community" is illustrated through black & white photos. Calendars are \$8. Call x2593.

Tuesday, November 13, 1990
Eighth Week of Fall Term

THE DAILY

Published for the staff of Lane Community College
747-4501, Ext. 2591

TODAY

- Downtown Center Open House, 2-7 p.m., National Community Education Day
- Womenspace personal defense seminar, 10 a.m., PE 125
- Book Fair, 8-11:30 a.m., HEA 115, fundraiser for Child Development Center
- Printmakers exhibit opens in the Art Department Gallery



THANK YOU PARTY

The College will host a Thank You Party for the many staff, students, and friends who helped make possible the Nov. 6 election victory. It's on Thursday, Nov. 15, at 3 p.m., in the northeast corner of the cafeteria. you're invited!

SHARE YOUR COMMENTS

Send your comments and observations about the five semi-finalists who interviewed for Vice President for Instruction to Sue Colvin by 1 p.m. today. She will share them with the Search Committee, which meets at 3 p.m.

HIGH SCHOOL STUDENTS TO CONVERGE ON LANE

About 100 high school students will attend a day-long College High Student Conference on campus tomorrow. All are enrolled in LCC classes in their high schools through the College High Program. They're from Junction City, Crow, Elmira, Mohawk and Springfield, and other Lane County high schools. The students may attend special sessions or actual LCC classes. For more information, contact Judith Gabriel, ext. 2699.

BOARD MEETS TOMORROW

The Board of Education meets Nov. 14, 7:30 p.m., Board Room, Admin. 216.

CURRICULUM COMMITTEE TO MEET

The Curriculum Approval Committee will meet Thursday, Nov. 15, 3-5 p.m., in Board Room, Admin. 216. Proposals from eight departments will be considered.

CLOSED

Financial Aid will be closed all day for inservice, Friday, Nov. 16. Phones will be answered from 8 a.m. to 5 p.m.; however, messages will not be returned until the following Monday. There will be no counter service.

LEARN HOW TO RECYCLE

Jim Dieringer seeks invitations to talk about recycling. He can explain the paper sorting process, what happens to the collected paper, and how we can work together to further paper recycling at Lane. Call Jim at ext. 2850.

BRING YOUR RV IN FOR SERVICE

The Mechanics Dept. is seeking recreational vehicles to be serviced by its new R.V. Service Technician program. Students and instructors will be repairing plumbing, electrical and appliance programs. To arrange for work on your R.V., call Bob Githens, ext. 2388.

CLASSIFIED COUNCIL TO MEET

The Classified Council Organizing Committee meets tomorrow, 3 p.m., PE 205. Recruiters from the committee are still seeking representatives and alternates. Contact your local recruiter if you're interested:

Performing Arts/Math	Rose Arnold x2392
PE/Health Tech.	Jane Wojcik x2627
Administration/Business	Marie Matsen x2364
Campus Svcs./Auto Tech./Air Tech.	Alen Bahret x2191
Apprenticeship/Appr. Annex	Kathy Karns x2214
Forum/Industrial Tech.	Jill Bradley x2352
Machine Tech./Electronics/Science	Phil Powers x2370
Center Building:	Elain Matchett x2213; and
	Charlotte Kudlemyer x2273
Downtown Center and vicinity	Rosemary Busby x2255
Cottage Grove & Florence	Rosemary Busby x2255

PLAN NOW FOR VALLEY RIVER

"Please begin planning for our event at Valley River Center on February 8, 9 and 10. We will set up Friday night for Saturday and Sunday displays, and take down Sunday evening. We will have more room this year so you may expand your booth area. Contact me to select booth area." - Joyce Kofford, Student Services, ext. 2315.

RIFKIN RATES RAVES

(Rates rate raves, too.) Jeremy Rifkin, internationally known environmental activist and author, will speak on "Genetic Engineering and the Environment" Nov. 16, 8 p.m., Hult Center. To welcome LCC and KLCC as cosponsors, special reduced rate two-for-one vouchers are available to LCC students and staff; regular prices are \$8, \$12 and \$18; voucher prices are \$10 for two students, \$14 for two non-students, and \$20 for two priority seats plus reception at the Hilton. Vouchers are available in Social Science office through 4:30 p.m. this Friday. For more information, call Ingrid Gram, ext. 2846/2427.

RENNAISSANCE ROOM WILL BAKE YOUR PIE

"Thanksgiving pies! Let us do your holiday baking. We are now taking orders for pumpkin pie (\$6 each); and pecan pie (\$8 each). Please place your order before Nov. 15." - Laurel Henry, Renaissance Room, ext. 2697

DISPLAY ITEMS SOUGHT

The Multi-Cultural Center needs traditional dress or artifacts for display at its Nov. 30 Open House. Call Connie Mesquita, ext. 2276, if you can help.

POSTER CONTEST ANNOUNCED

The Multicultural Center is sponsoring a cultural poster contest with prizes for first, second and third place. The deadline for entries is December 3. For more information, call ext. 2276 or visit Room 409 Center.

- ADS -

FREE MINILOP BUNNIES: These bunnies need homes now! 1 gray adult male, 1 dark brown 5-month-old male, 2 light brown/dark brown 2-1/2-months, gender undetermined. Cherril Hemminger, Admissions; call 746-5090 evenings.

FOR SALE: Matching sofa (2-years-new), love seat and pillows. Beige background with blue, gray and brown highlights. \$275. Cynthia Deshpande, Financial Services, ext 2610, 9 a.m.-4 p.m.

GOOD VALUE FOR YOUR ENTERTAINMENT DOLLAR: Cottage Theatre's production of "Tartuffe" by Moliere, a satirical comedy, continues performance Nov. 16 and 17, 8:15 p.m., at 150 Thornton Lane in Cottage Grove. Directions: go past Village Green and turn right at state police station; the theatre's right next door. For reservations, call The Bookmine or Grove Jewelers. Tickets are \$4.50; seniors/students, \$3.50. Barb McCall, Library, ext. 2356.

FOR SALE: 1978 BMW 320i, maroon, one owner (who babied it), \$3,500. Judy Blue Health Occ. x2635; or 484-1563.

	MON	TUES	WED	THUR	FRI 3
Soup	ALMOND POTATO BEEF BARLEY CHILI	SPINACH BROCCOLI CHICKEN VEGGIE CHILI	BROWN MUSHROOM LEEK SOUP CHILI	HARTY GOULASH SAVORY CHICKEN CHILI	CLAM CHOWDER TOMATO MACARONI CHILI
	FRANKFURTERS AND SAUERKRAUT BAKED BEANS WITH BACON GRILLED TURKEY AND SWISS	ROAST PORK WITH APPLESAUCE CHICKEN RICE CASSEROLE CHILI BURGER	BREADED CUBE STEAK WITH WINE SAUCE HAM AND CHEESE CASSEROLE MONTE CRISTO	B.B.Q. CHICKEN TUNA NOODLE CASSEROLE FARMERS BRUNCH	MARINATED COD CHICKEN TETRAZZINI BEEF AND SWISS
	BEEF AND NOODLES	LASAGNA	MUSHROOM TURKEY WITH RICE	TUNA ALMOND BAKE	BEEF BURGANDY WITH NOODLES
Vegeterian	EGGPLANT CASSEROLE	LENTIL CAKES	BROCCOLI & CHEESE QUICHE	COTTAGE CHEESE BALLS	STIR FRY VEGGIES
Veggie	MIXED VEGETABLES ZUCCHINI MASHED POTATOES	BRUSSEL SPROUTS CARROTS MASHED POTATOES	CREAMED PEAS BEETS MASHES POTATOES	GREEN BEANS STEWED TOMATOES MASHED POTATOES	SPINACH CORN MASHED POTATOES
	FRANKFURTERS AND SAUERKRAUT	ROAST PORK WITH APPLESAUCE	BREADED CUBE STEAK WITH WINE SAUCE	B.B.Q. CHICKEN	MARINATED COD
Snack Bar					

Wednesday, November 14, 1990
Eighth Week of Fall Term

THE DAILY

Published for the staff of Lane Community College
747-4501, Ext. 2591

edited by Joan Aschim

TODAY

- College High Student Conference, all day
- Classified Council Organizing Committee meeting, 3 p.m., PE 205
- Book fair, 8-11:30 a.m., Health 115, fundraiser for Child Development Ctr.

BOARD AGENDA

The Board of Education meets at 7:30 p.m. tonight in the Board Room. Items on the agenda include preliminary election results, dislocated workers, LCC at Florence, affordable student housing, drug-free workplace policy, Oregon Community College Association legislative platform, effects of Ballot Measure 5, senior citizen advisory council appointment, child care resource and referral, and more.

THANK YOU PARTY

The College will host a Thank You Party for the many staff, students, and friends who helped make possible the Nov. 6 election victory. It's Nov. 15, Thursday, 3 p.m., northeast corner of the cafeteria. You're invited!

GRANT LIBRARY MOVES

The College's grant library has moved from the Library in the Center Building to the Grant Office in Institutional Advancement on the second floor of the Administration Building. The grant library contains up-to-date information about funding sources and how to apply for grants. To use the materials or to learn more about how to seek funding, see either Sara Baz (ext. 2268) or Diane Dann (ext. 2592) in Admin. 209.

DROPOUTS SUBJECT OF DISSERTATION

University of Oregon Ph.D. student Abdul Al Habeeb will present the results of his dissertation research at 3 p.m. on Thursday, Nov. 15, in Center 420. Abdul interviewed LCC dropouts last year, looking for social and institutional factors in their leaving school.

LOCAL BUSINESSES MAY CLEAN UP HANFORD

The Government Contract Acquisition Program (GCAP) at LCC's Small Business Development Center is seeking local businesses to bid on the cleanup of Hanford nuclear facility, says Procurement Specialist David Welsh. Welsh says The U.S. Department of Energy plans to let \$494 million in contracts this year and \$632 million next year. It already let \$251 million last year, with only 3.5 percent of that going to Oregon businesses. "They're interested in increasing that," says David. For information, contact him at ext. 2255.

EUGENE MAYOR TO VISIT CAMPUS FOR LUNCH FORUM

Mayor Jeff Miller will discuss Eugene downtown at a brown bag lunch open to staff, students and the public on Nov. 29, 12-noon, in Admin. 216. A City of Eugene publication says downtown is facing these issues: "a location for the library, a design for the mall, encouraging business downtown, new development, and a site for the LTD transfer station."

LCC TO HOST FORUM TO BUILD UNITY ON TIMBER ISSUES

The College will host "Striving for Unity: Economic Transition Programs for Workers and Communities in the Timber Crisis" on Saturday, Dec. 1, from 8:30 to 4 p.m., in the Performing Arts Theatre. The cost is \$5. Principal coordinators Jerome Garger, LCC peace studies instructor, and Dennis Gilbert, U.O. physics professor, say their goal is to provide information, provoke discussion, and promote unity. Twenty-five groups had signed up as cosponsors as of Nov. 9. The forum is open to all interested individuals.

CWE COORDINATOR TO DISCUSS RESIDENTIAL REMODELING

Cooperative Work Experience Coordinator Joe Freeman will discuss his spring term 1990 professional development leave next Wednesday, Nov. 21, at 3 p.m., in PE 205. The focus of Joe's leave was construction technology and residential remodeling. Anyone interested is invited.

NEW INSURANCE RATE INFORMATION AVAILABLE

New insurance premium rate charts for classified and management staff have been placed in the forms rack just inside the door of Personnel Services. You can pick up a copy from 8 a.m. to 5 p.m., Monday through Friday.

AXLE NEEDED

Health & Physical Education is looking for the donation of an axle to be used in building a flatbed trailer for carrying outdoor education equipment. A mobile home axle would work, for example. If you have one to donate, please call Kurt Schultz, H&PE, ext. 2545.

SHEETMETAL STUDENTS HELP BUILD MUSEUM

Sheetmetal students recently helped install exterior sheeting on an airplane museum being built by volunteer labor and donations at the Eugene airport. They will install heating and ventilation systems later. The students are apprentices who receive some of their training from LCC, says Industrial Technology Chair Carl Horstrup.

WINNING THROUGH CHANGE

Institutional Advancement would like to preview a new American Management Association videotape called "Winning Through Change." If you have a copy or have seen it and would like to join us in renting it for evaluation, call Diane Dann, ext. 2592.

KLCC NEEDS FORMS BACK

Payroll deduction forms for KLCC have been mailed. If you haven't received a copy, contact KLCC at ext. 2224. All employees are eligible for a drawing and do not need to contribute to participate; however, the forms must be returned by Nov. 27. Thank you for supporting KLCC. - Paula Chan-Gallagher

CELEBRATE CAREERS

November is National Career Development Month. Counseling and Career Information Center (CIC) staff invite staff and students to drop by and learn about LCC's resources for career decision-making. The CIC is open 9 a.m. to 7 p.m. Monday and Tuesday, and 9 a.m. to 5 p.m. Wednesday through Friday. Student Services in the Downtown Center is open 10 a.m. to 6 p.m. Monday through Thursday.

PRINTMAKERS EXHIBIT TO BE DISCUSSED

Craig Spilman will talk about the Eugene printmakers exhibit on Monday, Nov. 19, at 1 p.m., in the Art Department Gallery. You're invited to attend.

ORDER YOUR PIE BY THURSDAY

We are now taking orders for pumpkin pie (\$6 each); and pecan pie (\$8 each). Order before Nov. 15." - Laurel Henry, Renaissance Room, ext. 2697

CLOSED

Financial Aid will be closed all day for inservice, Friday, Nov. 16. Phones will be answered from 8 a.m. to 5 p.m.; however, messages will not be returned until the following Monday. There will be no counter service.

DIRECTORIES AVAILABLE

Staff directories for 1990-91 are available from Sandy Young, I.A., in front of Admin. 211.

- ADS -

MACINTOSH USERS: How about joining an on-campus Macintosh User Group? I'm trying to organize one. If you're interested in attending the first meeting, sign up at the electronics counter in the Bookstore by Nov. 15. Barb Barlow, ext. 2679.

1970 MGB-GT, good condition, new Sony stereo, \$1750 or best offer. Bob Prokop, Mass Comm. ext 2472; or 345-5055.

NINTENDO: Have your kids outgrown their Nintendo set-up? This stressed-out math instructor will pay a reasonable price for an opportunity for mindless recreation. Also wanted is the Tengen version of Tetris. Contact Alice Kaseberg, Math., ext. 2392; or home, 345-7836.

FREE MINILOP BUNNIES: These bunnies need homes now! 1 gray adult male, 1 dark brown 5-month-old male, 2 light brown/dark brown 2-1/2-months, gender undetermined. Cherril Hemminger, Admissions; call 746-5090 evenings.

FOR SALE: Matching sofa (2-years-new), love seat and pillows. Beige background with blue, gray and brown highlights. \$275. Cynthia Deshpande, Financial Services, ext 2610, 9 a.m.-4 p.m.

Thursday, November 15, 1990
Eighth Week of Fall Term

THE DAILY

Published for the staff of Lane Community College
747-4501, Ext. 2591

edited by Joan Aschim

TODAY



THANK YOU PARTY

The College hosts a Thank You Party for the many staff, students, and friends who helped make possible the Nov. 6 election victory, today at 3 p.m., northeast corner of the cafeteria. You're invited!

- Book fair, 8-11:30 a.m., Health 115, fundraiser for Child Development Ctr.
- Curriculum Approval Committee meeting, 3-5 p.m., Admin. 216
- Abdul Al Habeeb presentation on LCC dropouts, 3 p.m., Center 420
- Holiday pie orders must be in to Renaissance Room, ext. 2697

NEW ELECTION RETURNS DATA

Complete, unofficial returns from the Nov. 6 election regarding LCC's tax base: Linn Co., 349 Yes, 617 No; Benton Co., 136 Yes, 364 No; Douglas Co. 1 Yes, 8 No; Lane County, 55,918 Yes, 44,474 No. Totals: 55% Yes, 45% No (excluding a few challenged ballots). Linn Co. includes the Harrisburg Union High School District; Benton Co. includes Monroe Elementary School Dist., and Douglas Co. includes a few families in its north area.

CORRECT YOUR DIRECTORY

Check your listings in the staff directory for accuracy. If a change is needed, inform The Daily and we will publish the correction. To date:

- Add Sue Colvin, Personnel Services, to the alphabetical list, pg. 46
- Add Sharon K. Moore, Admissions, to the alphabetical list, pg. 46
- Change extension for Pat Williams, International/Multicultural Services to 2165, pgs. 27 and 55
- Change extension for Germaine Mock, Personnel Services, to 2283, pgs. 34 and 51

SCRIMMAGE SET

The men's basketball team scrimmages with Northwest Christian College Friday, Nov. 16, at 3 p.m., here.

ARTISTS RECEPTION PLANNED

A reception for printmakers whose works are on display in the Art Dept. Gallery will be held tomorrow, 7:30-9:30 p.m., in the Gallery.

NORTHWEST TRENDS MAY AFFECT LCC

A new publication, Demographics Northwest, reports some trends that could have implications for Lane, says Diane Dann of Inst. Advancement/Marketing:

- Northwesterners work longer hours than they did five years ago, and longer hours than their counterparts in other parts of the country. The author says they need to work smarter, not longer.
- The majority of college students now take five years or longer to get an undergraduate degree. In the Oregon state system, only 15 percent of students graduate within four years.
- In both Oregon and Washington, 32 percent of businesses are owned by women. These firms account for 19 percent of sales in Oregon, and 13 percent in Washington. Nationally, 30 percent of businesses are women-owned and garner 14 percent of sales.

HAVE A PICNIC

"Picnic" opens Friday at 8 p.m. in Performing Arts Main Theater. For opening weekend only, staff may purchase tickets for \$5 each (a \$1 savings). Call the box office, ext. 2202. The Performing Arts Dept. thanks all staff who have subscribed for the 1990-91 season for their generous support. Subscription orders are still being taken. - Myrna Seifert, ext. 2209.

CLOSED

The Financial Aid counter will be closed all day Nov. 16. Phones will be answered but messages will not be returned until Monday.

HOLLAND COMMENDED

A member of International Women's Education Association of Japan and an instructor of Japanese at the U.O. each recently sent letters of thanks and commendation to Margie Holland of Counseling. Margie hosted visitors from the Japanese organization in October and introduced them to women's programs at LCC.

CANDEE PUBLISHED

Steve Candee, part-time political science instructor, will have "The Trivialization of American Politics" published in the March, 1991, issue of the National Science Journal. Steve presented the paper at last spring's International Social Science Conference in Vancouver, B.C.

THANKS FOR A SUCCESSFUL MEET

Health & Physical Education thanks all those who helped make the OSAA cross country championships a success. More than \$5,000 was raised for student scholarships and athletic expenses. About 4,000 people attended, including teams. Thanks especially to: members of women's track and basketball teams; men's track, cross-country, basketball and baseball teams; Dave Nickelson, Bob Creed, John Bernham, Jim Evans, Milt Madden, Peggy Bernham, Sally Maier, Tye Van Schoiack, Rick Mestler, Steph Wessell, Coldon Baxter, Brandy Allen, Michelle Lanning, Amy Bruhn, Dee Bryson, Sharon Krasowski, Corrina Schroeder, Renelle Jeppeson, Rich Saxton, Loi Heldt, Glen Fortune, Julia Reisinger, Mick Cates, Jan Yriarte, Cheryl Nail, Diana Nicholas, Molly Gholston, Dana Fritz, Al Fletcher, Dan West, Bob Darling, Tom O'Neil, Bryon O'Neil, Dan VanCamp, John Hilsenteger, Judy Ward, Lorraine Bingham, Jenny Sparks, Karena Shulmire, Sharon Foster, Jan Ryer, Denise Jubber, Matt Jarvis, Bud Lewis, Joanne Stern, Charlotte Brown, Kurt Schultz, Dave Loos, Larry Callaway, Dale Bates, Kay Gidley, Chief Dick Nice, Bill Schmutz; and a very special thank-you to Harland Yriarte and Gary Knapp.

RIFKIN SPEAKS

Discount vouchers to Jeremy Rifkin's lecture on Nov. 16 at the Hult Center are still available through 4:30 p.m. Friday in Social Science or through Ingrid Gram, ext. 2846/2427. Rifkin is an internationally known environmental activist and author. Two-for-one vouchers are available to LCC students and staff at \$10 for two students, \$14 for two non-students, and \$20 for two priority seats plus reception at the Hilton. LCC and KLCC/KLCO are cosponsoring the lecture with other organizations.

REGISTER FOR UNITY FORUM

"Striving for Unity: Economic Transition Programs for Workers and Communities in the Timber Crisis" will be held Saturday, Dec. 1, from 8:30 to 4 p.m., in the Performing Arts Theatre. The cost is \$5. Register with Laura Tamura, President's Office, ext. 2301.

INTERNATIONAL STUDENTS NEED HOLIDAY HOSTS

Would you like to share your Thanksgiving dinner? Lane's International Students office places international students in local homes on special occasions and holidays. If you can add one or more students to your dinner table, call Pat Williams, ext. 2165.

BRING YOUR R.V. IN FOR SERVICE

The Mechanics Dept. is seeking recreational vehicles to be serviced by its new R.V. Service Technician program. Students and instructors will be repairing plumbing, electrical and appliance programs. To arrange for work on your R.V., call Bill Jones, ext. 2379.

AXLE NEEDED

Health & Physical Education is looking for the donation of an axle to be used in building a flatbed trailer for carrying outdoor education equipment. A mobile home axle would work, for example. If you have one to donate, please call Kurt Schultz, H&PE, ext. 2545.

- ADS -

FOR SALE: 1982 Chev. pick-up, 6-cylinder, long-bed, light tan, cus. canopy, de. cab, all automatic, 74,900 miles, like new tires, \$4,700; will consider small car of same value, or a mobile home; Selco will loan full value; call 746-8786. Tillie Ulam, Food Services, x2670.

FOR SALE: Sheepskin jacket, leather blazer, each size 6-8; three-speed bathtub spa; all excellent condition; \$35 each or offer. Kay Gidley, Athletics, x2555; or 345-3706.

1970 MGB-GT, good condition, new Sony stereo, \$1750 or best offer. Bob Prokop, Mass Comm. ext 2472; or 345-5055.

NINTENDO: Have your kids outgrown their Nintendo set-up? This stressed-out math instructor will pay a reasonable price for an opportunity for mindless recreation. Also wanted is the Tengen version of Tetris. Contact Alice Kaseberg, Math., ext. 2392; or home, 345-7836.

Monday, November 19, 1990
Ninth Week of Fall Term

THE DAILY

Published for the staff of Lane Community College
747-4501, Ext. 2591

edited by Joan Aschim

TODAY

- Craig Spilman lectures on printmakers exhibit, 1 p.m., Art Dept. Gallery

FINALISTS SELECTED

Three finalists for v.p. for instruction have been selected. They are Jim Ellison, Rich Brightman, and Mike Crow. The finalists will interview again on campus, receive site visits from three Search Committee members, and have their references further checked. Chair Dick Reid says the committee is grateful for staff input received to date, and hopes to hear from more of you about the three finalists.

BOARD REPORT

The LCC Board of Education steered a a three-and-a-half-hour course through a full agenda Wednesday night, ending up with six actions and a decision to further discuss three issues at a work session to be scheduled.

Actions

1. Approved new courses and revisions recommended by the Curriculum Approval Committee and the Office of Instruction.
2. Approved bid award for two studio cameras and tripods for Mass Communication from MidWest Communications Corp. of Beaverton for \$29,320.
3. Approved appointment of a new 17-member Senior Citizens Advisory Council.
4. Approved the drug-free workplace policy after changing the phrase "appear under the influence" to "be under the influence."
5. Approved recommending to OCCA that its legislative platform include Peter Sorenson's proposal that board members be referred to as trustees.
6. Approved appointment of temporary instructors Helen Clark in Adult Basic and Secondary Education, and "Ed" Eugene Humes, in Industrial Technology.

For Work Session

1. Requested more discussion with private developers who are requesting LCC's support to build student housing east of the campus.
2. Requested more discussion of OCCA legislative platform.
3. Requested more discussion of possible effects of Measure 5.

An update on LCC at Florence was postponed, and a revision of surplus property policy was pulled for further internal discussion. Presentations were heard on preliminary election results, dislocated workers, and child care resource and referral. The next meeting is December 12.

MORE DIRECTORY CORRECTIONS

Check your listings in the staff directory for accuracy. If a change is needed, inform The Daily and we will publish the correction. To date:

- Add Sue Colvin, Personnel Services, 2583, to pg. 46
- Add Sharon K. Moore, Admissions, 2685, to pg. 51
- Change extension for Pat Williams, International/Multicultural Services to 2165, pgs. 27 and 55
- Change extension for Germaine Mock, Personnel Services, to 2283, pgs. 34 and 51
- Change Maxine Frauman dept. abbreviation to ESL, pg. 47

EGG CARTONS NEEDED

The recycling staff has received a request for egg cartons. Bring your unwanted cartons to Campus Ministry, Center 242; or contact Jim Dieringer, ext. 2850

HUNGER IN INDONESIA TO BE DISCUSSED

Beth Naylor, foods and nutrition instructor in Health Occupations, will speak in Jerome Garger's Peace & Conflict Studies class at 1 p.m. on Wed., Nov. 21, on "World Hunger Issues: Focus on Indonesia." You're invited to attend.

CLOSED

Research, Planning & Evaluation will be closed for in-service on Wed., Nov. 28. Phones will be answered but calls will not be returned until Thursday. Thanks for your patience.

EASELS AVAILABLE

Easel stands (flip charts) are available for check-out from Campus Security. Please call Wendy Westfall, ext. 2580, to borrow one.

EXIT INTERVIEW REQUIRED

Federal regulations require that students receiving a Stafford Student Loan or SLS Loan while attending LCC must attend an exit interview during the last term of attendance. The interview outlines financial planning, disclosure statements, repayment procedures, how to correspond with the lender, secondary markets, loan consolidation, options for making payments, and the consequences of default. Interview schedules are Nov. 29 at 10 a.m. in Forum 309, 2 p.m. in Forum 307, and 6 p.m. in Forum 308; and Nov. 30 at 9 a.m. in Forum 308, 1 p.m. in Forum 307, and 4 p.m. in Forum 307. The sessions will begin on time and latecomers cannot be admitted. The sessions will last about 50 minutes.

THANKS FOR CARING

Special thanks are due the following people who have been extra helpful to LCCEF in its efforts to help staff send cards and flowers to others who have needed appreciation or condolences. Thanks to: Colleen Cairney, Mary Cudney, Bert Ewing, Mary Glenn, Trish Hamer, Joyce Kofford, Sharon K. Moore, Jerry Sirois, Jo Stejskal, Jackie Thomas, Carol Turnbull, Sally Wilson, and Sandy Young. - Carol Barton, Library, ext. 2640; LCCEF Corresponding Secretary

HOSPITALIZED

Darlene Baker, admin. assistant for Continuing Ed., was hospitalized due to a serious car accident Nov. 13. She is doing fine. She will be in Room 556, Sacred Heart, through today. Cards after today may be sent to Continuing Ed. for forwarding. Thank you! - DTC staff, c/o Lorna Funnell, ext. 2906.

HOW TO WRITE TO MARINES IN ARABIA

To send holiday greetings to U.S. Marines stationed in Saudi Arabia, use this address: CSSD III, HQ 1st FSSG, FPO SF 96608-5702. They'd appreciate it, including Sgt. Tai Mamea. Thank you! - Lorna Funnell, Cont. Ed., ext. 2906

ISSA REPORTS SUCCESS

The Instructional Support Staff Association (ISSA) recently finished its first year. Some highlights of what they did:

- participated in the AAWCJC conference
- helped finalize the stockless warehousing system
- helped refine computerized systems for purchase orders, waiting list, and room scheduling
- initiated changes in the leave record process
- analyzed computer problems associated with instruction
- compiled a computer resource list
- established committees to work on forms, computer training, personnel procedures manual, scheduling, support staff development/networking, and teleconferences,
- participated in the search committee for v.p. for instruction

ISSA Steering Committee members for 1990-91 are Debbie Powers, Marianne Kimball, and Colleen Cairney. They invite your questions and comments.

JOB OPPORTUNITIES

Instructor/Mathematics, Faculty, closes 12/21.

Custodian, Custodian I, closes 11/31.

MON

TUES

WED

Soup

CHICKEN NOODLE	SUCCOTASH	EGG FLOWER SOUP
VEGETABLE	HOLLYWOOD TURKEY	ORIENTAL BEEF
CHILI	CHILI	CHILI

Cafeteria

ROAST BEEF	PORK CHOP FERMIER	HAM STEAK
PEPPER STEAK	HAMBURGER SQUASH	TON-YUK-KUI
TURKEY AND HAM	CASSEROLE	BEEF POT PIE
	MONTE CARLO	CHEESE DREAM

Mini Lunch

TUNA POTATOE PIE	TAMALE PIE	ALMOND SHRIMP
------------------	------------	---------------

Vegeterian

CABBAGE RICE	POTATO CHEESE	CHOW MEIN
PANCAKES	CASSEROLE	

Veggie

BEAN MEDLEY	SPINACH	PEAS & MUSHROOMS
STEWED TOMATOES	CAULIFLOWER WITH	LIMA BEANS
MASHED POTATOES	CHEESE SAUCE	MASHED POTATOES
	MASHED POTATOES	

Snack Bar

ROAST BEEF	PORK CHOP FERMIER	HAM STEAK
		TON-YUK-KUI

FOR SALE: Back again, beautiful Christmas swags for your front door, or specialized Christmas greenery for your fireplace mantle or your staircase. Swags and boughs decorated with fresh holly, beautiful plaid bows, satin ornaments, and optional snow. Only \$6.75. Call Linda Myers, CWE, ext. 2883; or evenings 344-6483. Deliveries start after Thanksgiving.

FOR RENT: Two beach cabins. "Harry's place" at Yachats, \$55/2 nights; and another at Waldport, \$95/2 nights. Many dates available incl. Thanksgiving, Christmas, and other weekends. Jan Brandstrom, Counseling, x2204; or 345-1395.

WANTED: Studio, small house or commercial space, for new Marimba Center to use for teaching, practice, African music-related events. Need 900+ sq.ft. plus access to a bathroom. Prefer central location (downtown, south Eugene) but will consider anything. \$300/month max. Lynne Swift, T&D, x2503.



THANKSGIVING
HOLIDAY

Thursday &
Friday, Nov. 22
and 23.

Wednesday, November 21, 1990
Ninth Week of Fall Term

THE DAILY

edited by Joan Aschim
Published for the staff of Lane Community College
747-4501, Ext. 2591

TODAY

- Campus Ministry closes at noon. Have a great Thanksgiving! - Myrna & Jim
- Joe Freeman, 3 p.m., PE 205, on residential construction technology
- Beth Naylor, 1 p.m., APR 214, on hunger in Indonesia; Jerome Garger's class

SIGN UP TODAY FOR EXCELLENCE SEMINAR - Financial Services has about 20 seats available for the CareerTrack "Tom Peter's Excellence 1990" seminar on Nov. 27. Presented by Rick Brinkman, CareerTrack says this year's seminar delivers fresh information and is not a repeat of a 1989 conference which 180 LCC staff attended. The cost for LCC staff is \$70 and includes lunch. Space is available on a first-come, first-served basis with a two people per department limit. For reservations, call Sue McDonald, ext. 2614, today.

CLOSED - Financial Services will be closed Nov. 27 to allow staff to attend the Excellence seminar (above). The cashiering counter will remain open.

SPECIAL MAILROOM PROCEDURE FOR MONDAY - Due to a large volume of holiday mail anticipated for Monday, Nov. 26, main campus staff are asked to bring their outgoing and intracampus mail to the Mailroom between 12-noon and 3:30 p.m., and pick up incoming mail. This is in lieu of regular Mailroom pick-up and delivery for that day only. Downtown Center and LCC at Florence and Cottage Grove will receive usual service.

VOLUNTEERS NEEDED - Forty volunteers are needed to facilitate small group sessions at the Saturday, Dec. 1 unity forum on timber issues. Volunteers will be briefed that morning, attend the first panel, and facilitate morning group discussions. They may stay for lunch and the afternoon sessions at no charge. Please contact Jerome Garger at ext. 2162 or 2419, if you can help.

SHARED DECISION-MAKING LEADERS TO SPEAK AT ALL-STAFF FORUM - League for Innovation visitors will answer questions on shared decision-making at an all-staff forum, Nov. 30, Forum 308-309. The 12:45-2:15 p.m. session will be coordinated by Mike Hopkinson, chair of the Shared Decision-Making Task Force, and Jay Marston, president of LCCEA. Staff are asked to get questions to them ahead of the meeting date. Speakers are Chancellor Thomas Fryer of Foothill-DeAnza C.C. District at Los Altos Hills, Calif., and President Donald J. Carlyon of Delta College, University Center, Mich. Both districts have had shared decision-making systems for years.

MORE LEAGUE ACTIVITY - The visit by League for Innovation representatives on Nov. 29 and 30 will allow LCC and the League to determine if they wish to continue their relationship. Reassessment is routine following appointment of new college presidents. The visit includes meetings with the Board of Education, Executive Council, College Council, and the all-staff forum.

INNOVATION PANEL AND TOUR - The League for Innovation visitors will hear the following staff speak about innovation on Friday, Nov. 30: Maxine Frauman on the ABE/HSC grant on cooperative learning; Rita Hennessy on Alternative Visions; Jerome Garger on Peace Studies and the "Striving for Unity" conference; Joe Farmer and Lucy Schafer on the Eldon G. Schafer Fund for Innovation; Shan Titus on Student Ambassadors; Carl Horstrup on rehabilitation of the Springfield Train Depot; Harvey Bond on Addition Services Training Program; Ken Hamilton and Kay Gunderson on SeniorNet; Diane Dann and Julie Aspinwall-Lamberts on marketing-planning; Bob Marshall and Jim Keizur on Classline; Ed McManus on Electronic Music; and Patti Basconcillo on Dislocated Workers. The League team will speak on-site with: Nancy Hoskins on computer-aided design in weaving; Susan Burch on Correctives; Ted Kotsakis on Airframe/Power Mechanics and Recreational Vehicle programs; and Paul Colvin and Darrell Allyn on the Energy Management Program.

CLASSIFIED COUNCIL TO MEET - The Classified Council will meet Nov. 28, 3 p.m., Center 008. Some seats on the Council still need filling. Meetings are open to all who want to attend or take part. Wednesday's agenda includes a report on recruitment of representatives, appointment of facilitators, and a first look at some of the issues facing the Classified Council. - Marie Matsen, ext. 2364

SCHEDULES READY - Winter 1991 class schedules should arrive in homes about Wednesday, November 28. - Susan Sutton, I.A., ext. 2593

CAMPUS MINISTRY PROGRAM CURTAILED - Campus Ministry is unable to have its Sharing is Caring program this year due to funding problems. If you know students who need holiday assistance, organize your department to adopt them or call Campus Ministry for referrals to other community services. - Marna Crawford, ext. 2814

INTERNATIONAL PROGRAM NEEDS HOLIDAY HOSTS - If you'd like to share your Thanksgiving dinner with international students, call Pat Williams, ext. 2178, International/Multicultural Services.

WOMENSPACE NEEDS HELP - Volunteers are needed for a gift-wrap booth at a holiday fair from 11:30 a.m. to 2:30 p.m., or 2:30 p.m. to 5:30 p.m. on your choice of Saturday or Sunday, Dec. 8, 9, 15, 16, 22, 23. Thanks! - Sue Thompson, H&PE, ext. 2552; 689-4487

MORE DIRECTORY CHANGES

- Delete ext. 2474 for David Joyce, Art & Applied Design, pgs. 6 and 49
- Delete ext. 2477 for Bob Prokop, Mass Communication, pg. 52
- Add ext. 2162 to Jerome Garger, English & Foreign Language, pgs. 17 and 48
- Change ext. for Jim McCarty, Performing Arts, to 2209, pgs. 33 and 50

DEFAZIO TO VISIT LCC - U.S. Representative Peter DeFazio will make four stops on a visit to campus on November 29. He will talk to International Relations students in Steve Candee's class, receive a plaque and four-star general's seatcover for helping LCC acquire a CT-39 Saberliner jet, lunch with President Moskus, and hear the concerns of some Transitions to Success students about Measure 7.

TRANSITIONS APPLICANTS SOUGHT - The Transitions to Success program for displaced homemakers and single parents is accepting applications for winter term. The program includes a six-credit Life Transitions and Career Planning class, support group, and resource group. Assistance with transportation costs is available. Call ext. 2837 for an appointment or visit the Transitions office in Center 213A.

TASK FORCE APPOINTED - President Moskus has appointed a 21-member Task Force on Decreasing Duplication of Programs and Services. In a Nov. 14 memo to task force members, Moskus says a July survey of staff supports the idea of improving efficiency by reducing duplication of efforts. The group is to identify areas of unnecessary duplication of offerings or services, and areas of appropriate (or needed) duplication. Their report is due February 15, 1991, to fit into the budget development cycle. On the force:

Co-chairs: Velma Jesser and Jane Wojcik

Facilitators: Julie Aspinwall-Lamberts and Sandy Ing

Members: Lorraine Allyn, Cheryl Alonso, George Alvergue, Jill Bradley, Doris Burkland, James Cagney, Ray Carter, Bob Cudmore, Vicky Hamar, Alice Kaseberg, Shannon Kracht, Eileen LePelley, Linda Loft, Marie Matsen, Joel McClure, Jack Robert, Larry Romine, Jane Scheidecker, Betty Vail

NEW LOCATION ANNOUNCED - The Work Activity Center will move to 1645 Oak Street after Dec. 1. All current phone numbers and extensions will remain the same. Watch for an Open House to be scheduled in early 1991. - Rick Venturi, ext. 2921

- JOB OPPORTUNITIES -

Clerk/Bookkeeper, Flight Tech., 75% time, Clerk III, closes 12/4.

Instructor/Mathematics, Faculty, closes 12/21.

Custodian, Custodian I, closes 11/30.

- ADS-

FOR SALE: Members Only leather jacket, 46L, excellent like-new condition, \$85. Al Shibley, H&PE, x2263/2545; or 747-6250.

FOR SALE: One-year-old male Cocker Spaniels, buff color (beautiful dogs), choice of two, \$50 each. Dana Edmunds, LCC student, Cottage Grove; 946-1579.

FOR SALE: Brand new, never-used Rossignol skis with Saloman 850 bindings, 298 cm, \$350. Used Rossignol 3G with Saloman bindings, 200 cm, \$100. Trish Kocher, retired from Personnel Services, 687-8738.

FOR SALE: Olin downhill skis (160's), excellent condition, no bindings, \$40. Laura Tamura, Pres. Office, x2301; or home, 345-8656 after 3:30 p.m.

FOR SALE: "PC Tools, Version 6" complete with data recovery, disk back-up, DOS shell and desktop manager; unbroken package with all disks and manuals. Sells for \$150; price, \$50. Call Lloyd Rain, Purchasing, x2208; or 726-2000.

MACINTOSH USER GROUP: Several people I've spoken with have not yet signed up; therefore I've extended the sign-up deadline to Dec. 7. To join or find out what we'll be doing, visit the Bookstore or Center Computer Lab. We'll be glad to have you. - Barbara Barlow, ext. 2679

WON'T LAST LONG: High-quality custom-made matching sofa and love seat with overstuffed padding and cushions, ideal for family room, \$1500; two Oregon-made oak bedside tables, each with two drawers, \$100 each or both for \$175; oak coffee table, \$97; Lemdeko sewing machine, \$100; Hitachi 3-head VCR with remote, \$275; Sony M-9 microcassette recorder, \$75; Black & Decker Handy Mixer with four attachments, \$20; call Annick Todd, ESL, x2253; or 344-1285.

Monday, November 26, 1990
Tenth Week of Fall Term

THE DAILY

edited by Joan Aschim
Published for the staff of Lane Community College
747-4501, Ext. 2591

TODAY

SPECIAL MAILROOM PROCEDURE TODAY

Main campus staff are asked to bring their outgoing and intercampus mail to the Mailroom between 12-noon and 3:30 p.m., and pick up incoming mail, today only, in lieu of regular Mailroom pick-up and delivery services. Downtown Center and LCC at Florence and Cottage Grove will receive usual service.

COLLEGE COUNCIL MEETS TOMORROW

The College Council meets from 1:30-3 p.m. in the Boardroom Nov. 27.

FINALISTS INTERVIEWS SCHEDULED

Interviews have been arranged for the three finalists for v.p. for instruction: Monday, Dec. 3, Dr. Richard (Rich) Brightman; Tuesday, Dec. 4, James (Jim) Ellison; and Wednesday, Dec. 5, Michael (Mike) Crow. The schedules include meetings with classified employees at 10:30 a.m., non-instructional managers at 11 a.m., Office of Instruction staff at 11:30 a.m., Instructional Cabinet at 1:30 p.m., all-staff reception in the Renaissance Room at 2 p.m., Faculty Council at 3 p.m. Staff input about the finalists is strongly encouraged by the Search Committee.

POWER-PACKED EVENTS SET FOR THURSDAY, FRIDAY

MAYOR JEFF MILLER will discuss Eugene downtown issues at a brown bag lunch open to all on Nov. 29 at 12-noon in Admin. 216.

LEAGUE FOR INNOVATION visitors arrive Nov. 29 and meet with the Board of Education and the Executive Council. They meet with College Council Nov. 30 at 7:45 a.m., attend panel presentations on innovation with staff at 9 a.m., and tour on-site innovations at 10:30 a.m. After lunch, participate in the ALL-STAFF FORUM at 12:45 p.m. in Forum 308/309, and meet with Executive Council at 2:30 p.m. for an exit interview.

U.S. REPRESENTATIVE PETER DEFAZIO visits students in Steve Candee's class on Nov. 29 at 10:30 a.m., Center 401; receives a plaque of appreciation at 11:30 a.m., Air Tech. 114; lunches with President Moskus at noon; and visits Transitions to Success students concerned about Measure 7 at 1 p.m. in Center 213.

SUBMIT QUESTIONS FOR LEAGUE VISITORS

Staff are asked to submit questions prior to Friday's all-staff forum to coordinators Mike Hopkinson or Jay Marston. League visitors Chancellor Thomas Fryer of Foothill-DeAnza C.C. District at Los Altos Hills, Calif., and President Donald J. Carlyon of Delta College, University Center, Mich., will discuss shared decision-making at the forum, 12:45-2:15 p.m., Forum 308-309.

THANKS

Thank you very much to those who donated magazines and furniture to ESL. We really appreciate it! - Kathleen Hoag, ESL, ext. 2253

FORENSICS SINGS

Director of Forensics Barbara Breaden reports that LCC Forensics (the speech team) won third place for community colleges in an October sweepstakes tournament at the U.O. that drew nearly 30 schools from five western states. And this month, Lane won first place in a sweepstakes competition at Linfield, outranking all other community colleges and numerous four-year institutions as well. Student Dan Clark has won seven trophies in the past three tournaments; Josh Hendrickson has won four; and Kevin Mergel, new to the team, has won two first-place trophies. Another new student, Bryan Beban, got on the air at Linfield's KSLC and plugged LCC, KLCC, and the tournament. Breaden says the wins demonstrate "the academic excellence of LCC."

OPEN HOUSE

The Multicultural Center hosts an Open House this Friday, Nov. 30, Center 409. The Center is also sponsoring a cultural poster contest; deadline for entries is Dec. 3. For information, call Connie Mesquita at ext. 2276.

CLOSED

Financial Services will be closed Nov. 27. The cashiering counter will remain open.

UNITY FORUM NEEDS VOLUNTEERS

Small-group facilitators are needed for the Dec. 1 forum, "Striving for Unity: Economic Transitions Programs for Workers & Communities in the Timber Crisis." Please contact Jerome Garger at ext. 2162 or 2419 if you can help.

MECHANICS STILL ACCEPTING RV'S

The Mechanics Dept. R.V. Service Technician program is still seeking recreational vehicles for repair of plumbing, electrical and appliance systems. For information, contact Bill Jones, ext. 2379.

GRANT LIBRARY MOVED

The College's grant library has moved from the Library in the Center Building to the Grant Office in Institutional Advancement on the second floor of the Administration Building. The grant library contains up-to-date information about funding sources and how to apply for grants. To use the materials or to learn more about how to seek funding, see either Sara Baz (ext. 2268) or Diane Dann (ext. 2592) in Admin. 209.

CONFERENCES TO CONSIDER

"Environmental Health & Safety Issues Specialty Workshop," Dec. 1, San Diego, \$125; "How to Work With Impossible People," Dec. 3, Eugene, \$105; "Customer Service," Dec. 4, Eugene, \$69; "A Day Along the Road Less Traveled," Dec. 4, Portland, \$105; "Redefining Leadership: Creating the Future," Dec. 6-7, AAWCJC, Portland, \$110. For information, contact Julie Baker, TLC, ext 2544.

- ADS-

PHONE NUMBER CORRECTED: Call 747-6150 or x2263/2545 for info about a Members Only leather jacket for sale, 46L, excellent like-new condition, \$85, from Al Shibley, H&PE.

X-MAS TREES: \$15 before Nov. 30, pick up at LCC on Dec. 8 from 12-noon to 4 pm. Proceeds go to LCC track & field teams. For info, call Larry Callaway, Athletics, x2215.

WANTED: Skis, Miller softs, 180 or 185 cm., with or without bindings. Call Fed Meyer, CWE, x2221.

FREE TO GOOD HOME: Cat, spayed female, three-year-old, white, short-haired. Owner recently died and cat is lonesome. Quiet, nice home is best. "Blue-Eyes" is afraid of children, ignores dogs. Penny Hurlburt, Cont. Ed.; please call 688-5882.

ST. JUDE'S CHRISTMAS BAZAAR: Dec. 2, noon-4 pm, Parish Hall, 4330 Willamette, tables available for \$7. Peggy Staalberg, Cont. Ed., 344-6871.

ARTISTS HOLIDAY SALE: Nov. 30, 9 am-3 pm; and Dec. 1, 10 am-6 pm; 2295-4 Patterson. Peggy Staalberg, Cont., Ed., 344-6871.

WANTED: House to share with one or two others beginning Dec. 15 or Jan. 1. Need space for well-behaved dog and stained-glass work. Easy-going, communicative, healthful living. Call Marissa at 345-0405; ESL, x2253, Mon-Thur. 6-8 p.m. class.

FOR SALE: Contemporary queen-size sofa sleeper, two-years-old, light tones w/oak trim, clean and comfy, \$425. Queen-size six-drawer underdresser waterbed frame, works well with conventional mattress, \$50. Basic cloth-covered bar stools, \$15 each or 2/\$25. All offers considered. Jana Shutts, Soc. Sci., x2427; or 741-1590.

FOR SALE: Piano, beautiful upright, sounds great, incl. bench & books, \$350 OBO. Vicky Kirkpatrick, Math, x2392; or 344-3184.

FOR SALE: 1977 Nova, black, dent in one door, engine needs work, \$500 OBO. HP QuietJet Plus printer, lists for \$800, will sell for \$250. Armstrong piccolo, excellent condition and tone, great Christmas present for your favorite flutist, \$250. Avatex Modem 1200, \$50. Lori Jo Oswald, LCC at Cottage Grove; please call 942-4021.

FOR SALE: "PC Tools, Version 6" complete with data recovery, disk back-up, DOS shell and desktop manager; unbroken package with all disks and manuals. Sells for \$150; price, \$50. Call Lloyd Rain, Purchasing, x2208; or 726-2000.

MENU FOR THE WEEK:

	MON	TUES	WED	THUR	FRI 5
Soup	LEMONY CELERY BEANS AND HAM CHILI	BARLEY VEGETABLE POTATO CHEESE CHILI	TOMATO VEGETABLE BEEF CHILI	MULLIGATAWNY POOR BOY CHICKEN CHILI	CLAM CHOWDER CORNED BEEF CHOWDER CHILI
Cafeteria	BRAISED SIRLOIN TIPS & NOODLES EGGWICH & BACON PASTA MI & CHEESE	SPARERIBS AND SAUERKRAUT SWISS STEAK DIABLO SAN	CHICKEN A LA KING BISCUITS MEXI CASSEROLE B.B.Q.BEEF SAN	CORNED BEEF AND CABBAGE THREE CHEESE SAN TURKEY RUBEN	FISH AND CHIPS HAM & CHICKEN CASSEROLE CHILI ROLL
Mini Lunch	STIR FRY BEEF AND VEGETABLES	RAVIOLI	BEEF STEW WITH CORNBREAD	CHICKEN NOODLE BAKE	CHICKEN RICE AU GRATIN
Vegetarian	LASAGNA	ZUCCHINI PANCAKES	CORN FRITTERS	CHEESE ZUCCHINI BAKE	CHEESE & SPINACH BLITZEN
Veggie	MIXED VEGGIES BEETS MASHED POTATOES	CORN BROCCOLI MASHED POTATOES	GREEN BEANS HOMINY MASHED POTATOES	PEAS & ONIONS CARROTS MASHED POTATOES	YELLOW SQUASH LIMA BEANS FRENCH FRIES
Snack Bar	BRAISED SIRLOIN TIPS & NOODLES	SPARERIBS AND SAUERKRAUT	CHICKEN A LA KING BISCUITS	CORNED BEEF AND CABBAGE	FISH AND CHIPS

Wednesday, November 28, 1990
Tenth Week of Fall Term

THE DAILY

edited by Joan Aschim
Published for the staff of Lane Community College
747-4501, Ext. 2591

TODAY

- Research, Planning & Evaluation closed
- Computer fair, 9 a.m.-2 p.m., NE corner of cafeteria
- OSPIRG office-warming party, 1-3 p.m., Center basement
- Women's Program brown bag talk, "Perspectives on Women's Roles in the Middle East," 12-1 p.m., Boardroom
- Classified Council meets at 3 p.m. in Center 008

HELP US CELEBRATE - Judy Dresser will be honored on Tuesday, Dec. 4, at 3 p.m. in the Boardroom. She has been with LCC since 1976. Judy has served the college in a number of capacities...chair of Home Economics, chair of Health, P.E. and Athletics, associate dean of instruction, and presently as assistant to the v.p. for instruction. She becomes president of the Hastings Campus of Central Community College in Nebraska in January. We are sending her off with fond farewells and invite you all to join us. - Delphine Blankenship, Office of Instruction, ext. 2308.

FACULTY COUNCIL AGENDA - The Faculty Council meets in **Science 110** on Thursday, Nov. 29, 3 p.m., to discuss its governance position paper, v.p. for instruction interview questions, and hear information and committee reports.

FACILITIES MEETING - The Facilities Management Committee meets Thursday, Nov. 29 at 3:30 p.m. in the Boardroom, to review the following: welding exhaust improvements, exterior color schemes, PE 204 remodel, counseling office landscaping, and BUS 108 office changes. The meeting is open to all interested. Paul Colvin, Campus Services, chairs the group.

AUTHOR TO DISCUSS PUBLIC POLICY SOLUTIONS - William H. Boyer, author of "America's Future: Transitions to the 21st Century," will speak in Jerome Garger's Peace & Conflict Studies class Nov. 30 at 1 p.m. in APR 214. His topic: public policy solutions to war, poverty, and environmental deterioration.

EDNA KENNEL EXHIBIT & RECEPTION - Watercolor paintings by Edna Kennel, Printing & Graphics, are on display in the Women's Center through Dec. 7. Stop by CEN 213 to see a sampling of her work. A reception will be held Thurs., Nov. 29, at 3 p.m., same place. Please join us for refreshments.

APPRECIATION - Thank you to all staff who included international students in their Thanksgiving holiday. Students have responded with gusto, appreciation, and enthusiasm. If participants would like to continue as a friendship family to an international student, please call Pat Williams at ext. 2165 for information.

MATH SUCCESS VIDEOS AVAILABLE - Video and audio tapes of the math success workshops held here in October are available to students and staff for checkout from the Women's Center, CEN 213. Judy Forcada, Spokane math educator, conducted a workshop for faculty and another for students. The workshops were cosponsored by the Office of Instruction, ABE, Math, ASLCC and the Women's Program.

DIRECT DEPOSIT HELPS YOU SAVE - Want to save money? Want to stash some away for the holidays, income taxes or a vacation? Do it the easy way -- direct deposit to your savings and/or checking account. Did you know that with Lane's Automatic Direct Deposit (LADD) your payroll dollars can be deposited in multiple accounts as well as multiple financial institutions? Contact Jackie Thomas, Financial Services, ext. 2210, for an authorization form.

THANKS - Many thanks to Joe Farmer for his outstanding efforts on behalf of the LCC Foundation in the purchase of the Regys bicycle machine for the rehabilitation of the physically disabled. - Susan Burch, H&PE, ext. 2556

PUBLISHED - Linda Riepe, Early Childhood Education Instructor/Coordinator, has an article in the August issue of Child Care Information Exchange titled "For the Benefit of All: Planning and Conducting Effective Parent Conferences."

FOUNDATION BUDGET COMMITTEE MAKES RECOMMENDATION - The Foundation Budget Discussion Committee has recommended the continuation of General Fund support for Foundation operations. This will conform with the funding of other community college foundations in Oregon. The recommendation was prompted by positive response from staff responding to a survey distributed at fall inservice, and a review of how other community college foundations are funded, writes committee chair Jane Wojcik in a Nov. 6 memo. The Foundation experienced its best year in 1989-90, bringing its total assets into the top 25 community college foundations in the nation. It received over \$207,000 in cash and \$96,200 in materials and equipment. It awarded \$43,335 in scholarships to 76 students; \$7,997 in loans to 69 students; \$4,980 for grants and special projects; and \$4,000 to Financial Aid for general scholarships. This year, over \$40,000 has already been received, in addition to a \$1.2 million anonymous endowment for scholarships. Also on the committee: Dottie Chase, Sandy Ing, Richard Null, Larry Romine, and Doug White.

FELLOWSHIPS AVAILABLE - Applications are being accepted for Committee on Institutional Cooperation Minority Fellowships for 1991-91. The fellowships provide support for four to five academic years, paying full tuition and a stipend of at least \$9,000. Application deadline is January 4; apply as early as possible. For complete information, call CIC in Indiana toll free at 800-457-4420.

UPCOMING CONFERENCES - "Managing Multiple Priorities," Eugene, Dec. 7, \$87. "Effective Leadership and Presentation Skills for Cooperative Education Professionals," Portland, Dec. 6, \$35. For details, call Julie Baker, T&LC, ext. 2544.

- ADS-

FOR SALE: Pair of antique turn-of-the-century English chairs. Beautifully carved backs, arms and legs. Newly upholstered seats. \$185 each. Please call 688-3838. Gayle Upp, Mailroom, x2574.

PHONE NUMBER CORRECTED: House to share with one or two others beginning Dec. 15 or Jan. 1. Need space for well-behaved dog and stained-glass work. Easy-going, communicative, healthful living. Call Marissa at 345-0406; ESL, x2253, Mon-Thur. 6-8 p.m. class.

FOR SALE: 1977 Nova, black, dent in one door, engine needs work, \$500 OBO. HP QuietJet Plus printer, lists for \$800, will sell for \$250. Armstrong piccolo, excellent condition and tone, great Christmas present for your favorite flutist, \$250. Avatex Modem 1200, \$50. Lori Jo Oswald, LCC at Cottage Grove; please call 942-4021.

WON'T LAST LONG: High-quality custom-made matching sofa and love seat with overstuffed padding and cushions, ideal for family room, \$1500; two Oregon-made oak bedside tables, each with two drawers, \$100 each or both for \$175; oak coffee table, \$97; Lemdeko sewing machine, \$100; Hitachi 3-head VCR with remote, \$275; Sony M-9 microcassette recorder, \$75; Black & Decker Handy Mixer with four attachments, \$20; call Annick Todd, ESL, x2253; or 344-1235.

FOR SALE: Back again, beautiful Christmas swags for your front door, or specialized Christmas greenery for your fireplace mantle or your staircase. Swags and boughs decorated with fresh holly, beautiful plaid bows, satin ornaments, and optional snow. Only \$6.75. Call Linda Myers, CWE, ext. 2883; or evenings 344-6483. Deliveries start after Thanksgiving.

FOR RENT: Two beach cabins. "Harry's place" at Yachats, \$55/2 nights; and another at Waldport, \$95/2 nights. Many dates available incl. Christmas and other weekends. Jan Brandstrom, Counseling, x2204; or 345-1395.

WANTED: Skis, Miller softs, 180 or 185 cm., with or without bindings. Call Fred Meyer, CWE, x2221.

XMAS TREES: \$15 before Nov. 30, pick up at LCC on Dec. 8 from 12-noon to 4 pm. Proceeds go to LCC track & field teams. For info, call Larry Callaway, Athletics, x2215.

ST. JUDE'S CHRISTMAS BAZAAR: Dec. 2, noon-4 pm, Parish Hall, 4330 Willamette, tables available for \$7. Peggy Staalberg, Cont. Ed., 344-6871.

ARTISTS HOLIDAY SALE: Nov. 30, 9 am-3 pm; and Dec. 1, 10 am-6 pm; 2295-4 Patterson. Peggy Staalberg, Cont., Ed., 344-6871.

FOR SALE: Piano, beautiful upright, sounds great, incl. bench & books, \$350 OBO. Vicky Kirkpatrick, Math, x2392; or 344-3184.

FREE TO GOOD HOME: Cat, spayed female, three-year-old, white, short-haired. Owner recently died and cat is lonesome. Quiet, nice home is best. "Blue-Eyes" is afraid of children, ignores dogs. Penny Hurlburt, Cont. Ed.; please call 688-5882.

FOR SALE: Contemporary queen-size sofa sleeper, two-years-old, light tones w/oak trim, clean and comfy, \$425. Queen-size six-drawer underdresser waterbed frame, works well with conventional mattress, \$50. Basic cloth-covered bar stools, \$15 each or 2/\$25. All offers considered. Jana Shutts, Soc. Sci., x2427; or 741-1590.

WOMENSPACE NEEDS HELP - Volunteers are needed for a gift-wrap booth at a holiday fair from 11:30 a.m. to 2:30 p.m., or 2:30 p.m. to 5:30 p.m. on your choice of Saturday or Sunday, Dec. 8, 9, 15, 16, 22, 23. Thanks! - Sue Thompson, H&PE, ext. 2552; 689-4487

FOR SALE: One-year-old male Cocker Spaniels, buff color (beautiful dogs), choice of two, \$50 each. Dana Edmunds, LCC student, Cottage Grove; 946-1579.

FOR SALE: Brand new, never-used Rossignol skis with Saloman 850 bindings, 298 cm, \$350. Used Rossignol 3G with Saloman bindings, 200 cm, \$100. Trish Kocher, retired from Personnel Services, 687-8738.

FOR SALE: Olin downhill skis (160's), excellent condition, no bindings, \$40. Laura Tamura, Pres. Office, x2301; or home, 345-8656 after 3:30 p.m.

TUPPERWARE PARTY. Join Mary Michaud, x2939, and Lorna Funnell, x2906, for free refreshments and a no-charge bingo party from 1-2:30 p.m., Dec. 1, at 805 Wilson. If you bring a non-LCC friend, you win something extra. Please RSVP by calling dealer Kristy Shaddy at 345-7020 and say you're with Lorna or Mary from LCC; or you may RSVP with us. If you want to book a party yourself, please credit me or Mary when you call Kristy. Thanks, and see you there! - Lorna Funnell, Cont. Ed.

DEADLINE FOR THE DAILY is noon on the day prior to publication on Mondays, Wednesdays and Thursdays. Submissions must include name, dept., and phone number. All items will be published at least once and more often if space permits.

Thursday, November 29, 1990
Tenth Week of Fall Term

THE DAILY

edited by Joan Aschim

Published for the staff of Lane Community College
747-4501, Ext. 2591

TODAY

- Faculty Council meets, 3 p.m., Science 110
- Facilities Management Committee meets, 3:30 p.m., Boardroom
- Reception for watercolor artist Edna Kennel, 3 p.m., Women's Center
- Mayor Jeff Miller discusses downtown Eugene, brown bag lunch, 12-noon, Boardroom
- U.S. Rep. Peter DeFazio visits Steve Candee's class, 10:30 a.m., CEN 401; receives thanks in Air Tech. 114, 11:30 a.m.; and visits Women's Program and Transitions to Success students, 1 p.m., CEN 213
- League for Innovation visitors arrive; dine at 6:30 p.m. in cafeteria; meet with Board of Education and Executive Council at 7:30 p.m., Board Room

LEAGUE REVIEWS LANE - League for Innovation representatives face a full day Friday as they conduct a routine membership review of Lane. The schedule:
7:45 a.m. continental breakfast meeting with College Council, Board Room
9:00 a.m. panel on innovations
10:30 a.m. campus tour of innovations
11:45 a.m. lunch in the Renaissance Room
12:45 p.m. all-staff forum: 30-minute League orientation, and 60-minute shared governance discussion, Forum 308-309
2:30 p.m. exit interview with Executive Council, Board Room

ALL-STAFF FORUM - Ask the experts from the League for Innovation about shared governance at the all-staff meeting on Friday, 12:45-2:15 p.m., Forum 308-309. Submit your questions in advance to coordinators Mike Hopkinson, ext. 2479; or Jay Marston, ext. 2446.

JUST WHO ARE THESE GUYS, ANYWAY? - Four of the nation's outstanding community college leaders will answer questions on shared decision-making at Friday's all-staff forum. Besides Lane President Jerry Moskus, the League for Innovation in the Community College group will include Donald J. Carlyon, Thomas W. Fryer, Jr., and Terry O'Banion.

Dr. Carlyon has been at Delta College, University Center, Mich., since its founding 30 years ago. He was business manager from 1960-64, and then became president in 1964. Shared governance has been a feature of the institution throughout its existence. Unduplicated headcount last year was 18,204. Delta, like Lane, is located close to a four-year school, in its case Saganaw Valley State University.

Dr. Fryer has headed the 50,000-headcount Foothill-De Anza C.C. District at Los Altos Hills, Calif., since 1978. He is a former vice president of Miami Dade C.C. Foothill is recognized as among the most participatively governed colleges and Fryer as among the nation's most effective chancellors. His book, with John Lovas, on decision making is to be published by Jossey-Bass in February 1991.

Dr. O'Banion is executive director of the League for Innovation, which is headquartered at Laguna Hills, Calif. In his 28 years in community colleges, he has served as dean of students in two Florida community colleges, and as vice chancellor at the Dallas, Tex., C.C. District. He has authored 10 books on the community college. His newest, on innovation, was published last May.

FINALISTS TO UNDERGO FULL-DAY INTERVIEWS NEXT WEEK - V.P. for instruction finalists will follow this agenda next week: Community Ed. at 8:30 a.m.; The Torch at 10 a.m.; Classified Council at 10:30 a.m.; non-instructional managers at 11 a.m.; Office of Instruction at 11:30 a.m.; Instructional Cabinet at 1:30 p.m.; reception at 2 p.m.; Faculty Council at 3 p.m.; President Moskus at 4 p.m. and again at dinner at 7 p.m. Interviewing are Dr. Richard (Rich) Brightman, Dec. 3; James (Jim) Ellison, Dec. 4; and Michael (Mike) Crow, Dec. 5.

Staff are encouraged to attend the 2 p.m. reception in the Renaissance Room, and to share comments about the candidates with the Search Committee by submitting them to Sue Colvin.

OPEN HOUSE - ASLCC and the Multicultural Center host an Open House this Friday, Nov. 30, Center 409. Opening ceremonies will be held at 10 a.m., followed by storytelling, music, reception, displays, arts and craft sales, and refreshments. For information, call Connie Mesquita at ext. 2276.

UNITY FORUM ON SATURDAY - "Striving for Unity: Economic Transitions Programs for Workers & Communities in the Timber Crisis," will be held Sat., Dec. 1, beginning at 8:30 a.m. in the Performing Arts theatre. For details, contact Jerome Garger at ext 2162 or 2419. To register, call the President's Office at ext. 2301.

MAILROOM SAYS FLYERS NEED ENVELOPES - Due to an increase in the volume of flyers for distribution, the Mailroom can no longer accept them unless they are placed in an inter-campus envelope and properly addressed (dept. name required; personal name optional). Call the Mailroom for further information or supplies, ext. 2575.

JAPANESE PROPOSAL PONDERED - A possible tie between LCC and a proposed private university in North Nagasaki Prefecture in Japan was reviewed at Tuesday's College Council. Japanese students would take their first two years of college here to gain English fluency, to get an international outlook, to reduce their educational costs by 30-50 percent, and to enjoy Oregon's "clean air, pure water, lush vegetation, and warm people." The number of students probably would be small. The Japanese university might want to construct its own classroom or living facility nearby. The proposal comes from Hideaki Tasaki, a legal researcher at Niigata University, through the City of Eugene Planning & Development Department.

In other matters, the Council seemed to be in agreement that the college should adopt a hands-off policy in regard to proposed student housing at the northeast edge of the 30th avenue campus.

It was reported that the State of Oregon, if it is to keep the College whole following implementation of Ballot Measure 5, will have to "backfill" (replace property tax losses) by approximately \$4.4 million next year, \$7.7 million in 1994-95, \$16.6 million in 1995-96, and so on. The question is whether the State, through the legislature, will or can find money with which to backfill LCC and others whose property tax revenues are being reduced.

CHILD CARE ISSUES TO BE DISCUSSED - OSPIRG is sponsoring a roundtable discussion of child care on Monday, Dec. 3, at 12-noon, in PE 205. It invites staff, board members, students, and child care experts to attend. If you'd like to participate, call Trish Rosewood, ASLCC, ext. 2335.

INSURANCE REPS AVAILABLE FOR QUESTIONS NEXT WEEK - Classified and management staff interested in changing from one medical/vision plan to another, or adding a dependent to medical/vision or dental coverage, may change now through December 14. New enrollment forms are available at the reception desk in Personnel Services. All changes and additions received by Marie Nelson in Personnel by 5 p.m. on Dec. 14 will be effective January 1, 1991. Representatives from Blue Cross/Blue Shield and SelectCare will be available to answer your questions, Wednesday, Dec. 5, from 9 a.m.-noon in PE 205. For more information, contact Marie Nelson, ext. 2590; or 726-2211.

DIRECTORY UPDATE - Change extension for Al Shibley, H&PE, to 2345, pgs. 23 and 53.

MECHANICS STILL ACCEPTING RV'S - The Mechanics Dept. R.V. Service Technician program is still seeking recreational vehicles for repair of plumbing, electrical and appliance systems. For information, contact Bill Jones, ext. 2379.

- ADS-

FOR RENT in Chevy Chase neighborhood near bike path and canoe-way: weatherized 3-bedroom duplex with fenced yard, garage, fireplace. Available Jan. 1 (or slightly before). \$625. No pets, please. Contact Jane Scheidecker (SBDC x2255) at 345-2420.

FOR SALE: PAIR OF ANTIQUE turn-of-the-century English chairs. Beautifully carved backs, arms and legs. Newly upholstered seats. \$185 each. Please call 688-3838. Gayle Upp, Mailroom, x2574.

HOUSE WANTED to share with one or two others beginning Dec. 15 or Jan. 1. Need space for well-behaved dog and stained-glass work. Easy-going, communicative, healthful living. Call Marissa at 345-0406; ESL, x2253, Mon-Thur. 6-8 p.m. class.

FOR SALE: Back again, beautiful Christmas swags for your front door, or specialized Christmas greenery for your fireplace mantle or your staircase. Swags and boughs decorated with fresh holly, beautiful plaid bows, satin ornaments, and optional snow. Only \$6.75. Call Linda Myers, CWE, ext. 2883; or evenings 344-6483. Deliveries start after Thanksgiving.

ST. JUDE'S CHRISTMAS BAZAAR: Dec. 2, noon-4 pm, Parish Hall, 4330 Willamette, tables available for \$7. Peggy Staalberg, Cont. Ed., 344-6871.

ARTISTS HOLIDAY SALE: Nov. 30, 9 am-3 pm; and Dec. 1, 10 am-6 pm; 2295-4 Patterson. Peggy Staalberg, Cont., Ed., 344-6871.

FOR SALE: Piano, beautiful upright, sounds great, incl. bench & books, \$350 OBO. Vicky Kirkpatrick, Math, x2392; or 344-3184.

XMAS TREES: \$15 before Nov. 30, pick up at LCC on Dec. 8 from 12-noon to 4 pm. Proceeds go to LCC track & field teams. For info, call Larry Callaway, Athletics, x2215.

FOR SALE: Members Only leather jacket, 46L that also fits 42R, excellent like-new condition, \$85. Al Shibley, H&PE, x2263/2545; or 747-6250.

DEADLINE FOR THE DAILY is noon on the day prior to publication on Mondays, Wednesdays and Thursdays. Submissions must include name, dept., and phone number. All items will be published at least once and more often if space permits.