

Monday, December 3, 1990
Dead Week, Fall Term

THE DAILY

edited by Joan Aschim
Published for the staff of Lane Community College
747-4501, Ext. 2591

TODAY

- Watercolors by Edna Kennel on exhibit in Women's Center
- Roundtable discussion on child care sponsored by OSPIRG, 12-noon, PE 205
- Work Activity Center open at new location, 1645 Oak Street, Eugene
- Deadline for Multicultural Center poster contest; for info call ext. 2276

FROM THE PRESIDENT

"I need everyone's help in making a very important decision, namely, who will serve LCC as vice president for instruction. Please make an effort to see and hear the candidates this week. Then send your impressions to Sue Colvin in Personnel who will share them with the Search Committee. Thank you." - Jerry Moskus

ALL STAFF HAVE OPPORTUNITY TO MEET FINALISTS

A reception for each of the three finalists for v.p. for instruction will be held at 2 p.m. in the Renaissance Room on the interview day. All staff are invited.

The full schedule: Community Ed. at 8:30 a.m.; The Torch at 10 a.m.; Classified Council at 10:30 a.m.; non-instructional managers at 11 a.m.; Office of Instruction at 11:30 a.m.; Instructional Cabinet at 1:30 p.m.; reception at 2 p.m.; Faculty Council at 3 p.m.; President Moskus at 4 p.m and again at dinner at 7 p.m.

INTERVIEWING TODAY: DR. RICHARD (RICH) BRIGHTMAN

Dr. Richard W. Brightman is director of educational services at Coast Community College District. He formerly served CCCD as special assistant to the chancellor. He taught computer science, accounting and business at Golden West College and was dean of instruction at Orange Coast College. Brightman has a A.A. from Orange Coast College, a AB and M.B.A. from Stanford, plus a Ph.D. from UCLA.

INTERVIEWING TOMORROW: JAMES (JIM) ELLISON

James E. Ellison is interim vice president for instruction at Lane and has also served as dean of evening/weekend college, dean of instructional support, dean of liberal arts, associate dean of instructional services, and chair and assistant professor of study skills. Ellison holds a B.S. and M.S. from Oregon State University.

INTERVIEWING WEDNESDAY: MICHAEL (MIKE) CROW

Michael G. Crow is academic dean of liberal arts, business and computer science at Oakland Community College. At Orange Coast College, he served as director of research and taught history. He also directed research at Coast Community College District. Crow has a B.A. and an M.A. from the University of California at Riverside, and is a Ph.D. candidate at University of California at Irvine.

RECEPTION TOMORROW - Judy Dresser will be honored Dec. 4 at 3 p.m. in the Boardroom. She has been with LCC since 1976. Judy becomes president of the Hastings Campus of Central Community College in Nebraska in January. We are sending her off with fond farewells and invite you all to join us. - Delphine Blankenship, Office of Instruction, ext. 2308.

PERS DEADLINES APPROACHING

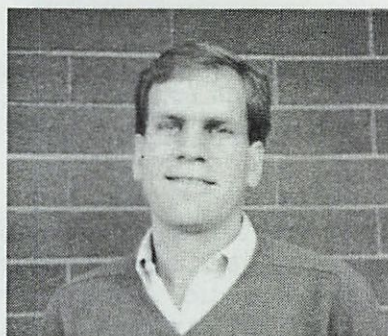
The Public Employees Retirement System wants to remind you that if you wish to file a variable annuity election, change the percentage on a previous election, or cancel your variable election, the form must be on file with PERS by Dec. 31 to be effective for 1991. For further details or to obtain a form, contact Vicki Ellison, Personnel, ext. 2589.

BENEFIT RECEPTION - Campus Ministries is hosting a holiday benefit reception in honor of Marna Crawford this Wednesday, Dec. 5., at 3 p.m., Health 114. There will be entertainment and good food. Donations of \$3 per person or \$5 per couple will be accepted at the door.

SURPRISE PARTY - A surprise retirement party for Edna Kennel, Printing/Graphics designer, will be held on her last work day, Monday, Dec. 10, at 3 p.m., in Printing/Graphics.

PLAN NOW FOR VALLEY RIVER - Please begin planning for our fair at Valley River Center on February 8, 9 and 10. We'll set up Friday evening and take down Sunday night. We have more room this year. Select your booth area from Joyce Kofford, Student Services, ext. 2315.

MEET STAN SWANK - Stan was hired as an instructor in Science in September. He actually joined Lane in March of this year for a three-month stint as a part-time instructor. Before that, he was a graduate teaching fellow in the U.O. biology department. He worked at Syntex Research for two years, and at Cal Poly for more than a year. He has two degrees in biology, an M.S. from the U.O., and a B.S. from Cal Poly.



ALTERNATIVE VISIONS PERFORMS - The Alternative Visions class will present the Greek classic "Antigone" at 12-noon on Tuesday, Dec. 11, in the Performing Arts main theater. You will see a wild and unusual approach to this tale of one woman's stand against a powerful and impersonal state. Come join us for this exciting lunch-time activity. See you there! - Patrick Torelle, Performing Arts., ext. 2645.

GET YOUR NAME IN THE BASKETBALL PROGRAM - Join the Friends of the Titans: List your name in the 1990-91 basketball program, for \$10. The program features both men's and women's teams. Proceeds are for student-athlete scholarships. Some display ad space for your business is also available for \$30, \$50 and \$100. Send check to Athletics or call 726-2215 for more information.

MARKETING MONEY AVAILABLE - Next deadline for applying for marketing grants is Jan. 10. Contact Diane Dann in Institutional Advancement at ext. 2592 for guidelines and application.

INSURANCE REPS AVAILABLE FOR QUESTIONS - Classified and management staff interested in changing from one medical/vision plan to another, or adding a dependent to medical/vision or dental coverage, may change now through December 14. New enrollment forms are available at the reception desk in Personnel Services. All changes and additions received by Marie Nelson in Personnel by 5 p.m. on Dec. 14 will be effective January 1, 1991. Representatives from Blue Cross/Blue Shield and SelectCare will be available to answer your questions, Wednesday, Dec. 5, from 9 a.m.-noon in PE 205. For more information, contact Marie Nelson, ext. 2590; or 726-2211.

MECHANICS STILL ACCEPTING RV'S - The Mechanics Dept. R.V. Service Technician program is still seeking recreational vehicles for repair of plumbing, electrical and appliance systems. Contact Bill Jones, ext. 2379.

DIRECTORY CHANGE - Change the extension for Patrick Torelle, Performing Arts, to 2209, on pgs. 34 and 54 of the staff directory.

- JOB OPPORTUNITIES -

Custodian, Custodian II, Campus Services/Housekeeping, Temporary 1/15/91-1/15/92, closes 12/14/90.

- ADS-

RIDE OFFERED to Mendocino, Calif., around Dec. 16 or later, returning after Christmas. Dates negotiable. Share gas and driving. Call Marissa Linn at 345-0406; ESL, x2253, Mon-Thurs 6-8 p.m. class.

WANTED: House to share with one or two others beginning Dec. 15 or Jan. 1. Need space for well-behaved dog and stained-glass work. Easy-going, communicative, healthful living. Call Marissa Linn at 345-0406; ESL, x2253, Mon-Thurs. 6-8 p.m. class.

FOR SALE: New Blaupunkt pull-out car stereo. \$225 OBO. Harold Carothers, Food Services, x2671; or 895-3523.

WANTED: Quality bicycle trailer. Bob McCorkle, Counseling, 726-2204.

FLUTE: Artley, silver plated. Excellent. \$150. Tom Birkenhead, Business, x2221; or 342-7583.

AVON OPEN HOUSE, Friday, Dec. 7, 11 a.m.-6 p.m., 1445 Railroad Blvd., Sp. 15, Eugene. Free gift. Display items for sale. Reva Moen, ABE, x2917.

COMFORTABLE queen-size sofa sleeper, blue, like new, \$325. Patty Hammons, E&FL, x2896; or 688-6589.

MEALS ON WHEELS has distributed yellow and black coin collection containers around town to raise money for meals to homebound elderly people in Lane County. Drop your change in the containers or mail larger gifts to Meals on Wheels, 1025 Willamette, Room 200, Eugene, OR 97401. - Naomi Soules, Cont. Ed., x2902.

HOST HOME SOUGHT - A Danish exchange students is seeking a host home for winter and possibly spring. For information, contact Deborah Bernhard, ABE, ext. 2214; or 726-8188

FOR RENT in Chevy Chase neighborhood near bike path and canoe-way: weatherized 3-bedroom duplex with fenced yard, garage, fireplace. Available Jan. 1 (or slightly before). \$625. No pets, please. Contact Jane Scheidecker (SBDC x2255) at 345-2420.

WOMENSPACE NEEDS HELP - Volunteers are needed for a gift-wrap booth at a holiday fair from 11:30 a.m. to 2:30 p.m., or 2:30 p.m. to 5:30 p.m. on your choice of Saturday or Sunday, Dec. 8, 9, 15, 16, 22, 23. Thanks! - Sue Thompson, H&PE, ext. 2552; 689-4487

DEADLINE FOR THE DAILY is noon on the day prior to publication on Mondays, Wednesdays and Thursdays. Submissions must include name, dept., and phone number. All items will be published at least once and more often if space permits.

Tuesday, December 4, 1990
Dead Week, Fall Term

THE DAILY

edited by Joan Aschim
Published for the staff of Lane Community College
747-4501, Ext. 2591

TODAY

- Reception for Judy Dresser, 3 p.m., Board Room
- Watercolors by Edna Kennel on exhibit in Women's Center

MANY INTERVIEWS OPEN TO ALL STAFF

V.P. for Instruction Search Committee Chair, Dick Reid, says the following interview sessions are open to all staff. The 2 p.m. reception for each candidate has been set aside especially as an all-staff opportunity.

- 10:30 a.m. Classified Council, Board Room
- 11:00 a.m. Non-instructional managers, Board Room
- 1:30 p.m. Instructional Cabinet, Board Room
- 2:00 p.m. Reception, Renaissance Room
- 3:00 p.m. Faculty Council, PE 205

Rich Brightman interviewed yesterday. Today, Jim Ellison interviews. The final interview is with Mike Crow, tomorrow.

RECOMMENDED FOR CONTINUED MEMBERSHIP

Following Friday's visit, members of the site review team for the League for Innovation in the Community College announced that they will recommend that Lane be approved for continuing membership. The League's directors will vote via mail ballot during December and the League office will notify Lane of the outcome in early 1991. Members of the review team were Tom Fryer of Foothill-De Anza Community College District, Donald J. Carlyon of Delta College, and Terry O'Banion of the League staff.

SLIDES WANTED FOR STUDENT SUCCESS CONFERENCE

Organizers of a conference for Oregon and Washington community colleges, "Student Success Strategies 1991," are requesting slides from Lane and other community colleges that in any way depict the conference's multi-cultural theme of 'Students Succeeding in a Global Society.' The slides will be used to produce a summary presentation of the conference. The conference will be held Feb. 15 & 16 at the new Oregon Convention Center in Portland. If you have something from your department that you would like to submit, contact Student Services, ext. 2315, before December 17. Student Services will forward all slides from Lane to the slide presentation coordinator, Lynn Seaman, at Clackamas Community College. Slides will be returned.

INJURIES REPORTED

Personnel Services has reported 47 work-related injuries at the College for 1989-90, at a cost of \$47,087. One less injury was claimed in 1988-89 but the cost was greater at \$118,668.

The most frequent injuries are sprains and strains. The most expensive are those related to mental stress, fracture and dislocation.

Injury-free departments since FY 1987-88 are Business, Computer Services, E&FL, Flight Tech., LCC at Cottage Grove, LCC at Florence, President's Office, Instruction, Administrative Services, Purchasing, Research/Planning/Evaluation, Social Science, and Specialized Student Services.

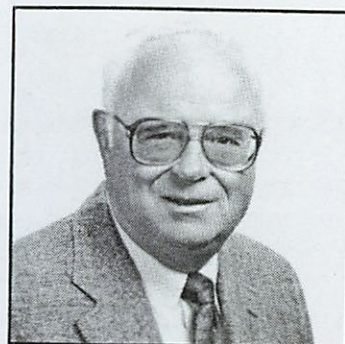
Departments with injuries for each of the last three years include Campus Services, ABE, CWE, Health Occ., H&PE, Industrial Tech., Work Activity Center, Financial Aid, Inst. Advancement, and Student Activities/Auxiliary Services.

Oregon's Occupational Health & Safety Division advised the College this year that poor indoor air quality in the Downtown Center may be contributing to employee ills. SAIF Corporation suggested acoustical changes in DTC to lower noise levels. SAIF also checked out concerns about chemicals in Science, ventilation in Apprenticeship, and other issues in Health Occ. and Mechanics.

The College established early-return-to-work funds in July, 1989. These funds have assisted departments in returning employees to work early when they are unable to perform their regular duties but have been released for "modified duty." Two employees receiving this assistance have returned to regular positions, and the College is attempting to find "available and suitable" position for another employee currently being assisted with these funds.

FOUNDATION NAMES NEW PRESIDENT

Ed Anderson of Eugene has been elected president of the LCC Foundation for 1990-91. He succeeds Dorothy "Dotty" Chase of Eugene, who served four terms as president. Anderson has been first vice president of the Foundation for four years. He is the former CEO of Eugene Linen & Overall Supply. He is an active member of Eugene Rotary and has served on the boards of United Way, YMCA, Boy Scouts and the Oregon State Board of Health.



BEACON GRANT DEADLINE APPROACHING

The deadline for Kellogg/AACJC Beacon grant programs is December 14. Anyone who is applying for a Beacon grant should follow the normal college grant process. Anyone who has been invited by another college to be an associate should contact Shirley Pearson in the President's Office, ext. 2200, for an okay and letter of commitment prior to agreeing to participate.

STAFF DIRECTORY CHANGES SUMMARIZED

This is a recap of changes submitted to The Daily to date for the 1990-91 staff directory:

- Add Sue Colvin, Personnel Services, 2583, to pg. 46
- Add Sharon K. Moore, Admissions, 2685, to pg. 51
- Change extension for Pat Williams, International/Multicultural Services to 2165, pgs. 27 and 55
- Change extension for Germaine Mock, Personnel Services, to 2283, pgs. 34 and 51
- Change department abbreviation for Maxine Frauman to ESL, pg. 47
- Delete extension 2474 for David Joyce, Art & Applied Design, pgs. 6 and 49
- Delete extension 2477 for Bob Prokop, Mass Communication, pg. 52
- Add extension 2162 for Jerome Garger, English & Foreign Language, pgs. 17 and 48
- Change extension for Jim McCarty, Performing Arts, to 2209, pgs. 33 and 50
- Change extension for Al Shibley, Health & Physical Education, to 2345, pgs. 23 and 53
- Change extension for Patrick Torelle, Performing Arts, to 2209, pgs. 34 and 54

- ADS-

FOR SALE: Earth-tone plaid queen-size hide-a-bed couch, very nice condition, \$150; plush early-American rust color corduroy couch, easy chair and ottoman, very nice condition, set for \$200. Call Russ Bowen (Aviation Maintenance x2379) at 345-5483 evenings.

FOR SALE: Velour sofa, natural tones, floral design, GOOD CONDITION, \$50. Please call Pat Langan, Financial Services, x2605.

FOR SALE: Brand new Hot Spot point-of-use electric water heater, \$75. Cord of fir for \$80; or hardwood, dogwood or oak for \$120. Call Diana Reiber, Business, x2221.

WANTED: Do you have an extra television set you would be willing to loan to a South African family over the Christmas break? If you do, I'd appreciate your contacting me. Karen Bond, Social Science, x2428; or 726-5019 evenings.

FOR SALE: Computer parts: Amdek 310A amber monitor; save your eyes with this one; like new; \$45. IBM color graphics card, \$50. Joystick, \$30. Multi-I/O short card with clock/calendar, serial and parallel ports, and game adapter port, \$40. Joystick and I/O card still in boxes, never used. Gary Rholl, Business, x2221; or 484-0955, leave message.

RIDE OFFERED to Mendocino, Calif., around Dec. 16 or later, returning after Christmas. Dates negotiable. Share gas and driving. Call Marissa Linn at 345-0406; ESL, x2253, Mon-Thurs 6-8 p.m. class.

WANTED: House to share with one or two others beginning Dec. 15 or Jan. 1. Need space for well-behaved dog and stained-glass work. Easy-going, communicative, healthful living. Call Marissa Linn at 345-0406; ESL, x2253, Mon-Thurs. 6-8 p.m. class.

FOR SALE: New Blaupunkt pull-out car stereo. \$225 OBO. Harold Carothers, Food Services, x2671; or 895-3523.

WANTED: Quality bicycle trailer. Bob McCorkle, Counseling, 726-2204.

FLUTE: Artley, silver plated. Excellent. \$150. Tom Birkenhead, Business, x2221; or 342-7583.

AVON OPEN HOUSE, Friday, Dec. 7, 11 a.m.-6 p.m., 1445 Railroad Blvd., Sp. 15, Eugene. Free gift. Display items for sale. Reva Moen, ABE, x2917.

COMFORTABLE queen-size sofa sleeper, blue, like new, \$325. Patty Hammons, E&FL, x2896; or 688-6589.

HOST HOME SOUGHT - A Danish exchange student is seeking a host home for winter and possibly spring. For information, contact Deborah Bernhard, ABE, ext. 2214; or 726-8188

FOR RENT in Chevy Chase neighborhood near bike path and canoe-way: weatherized 3-bedroom duplex with fenced yard, garage, fireplace. Available Jan. 1 (or slightly before). \$625. No pets, please. Contact Jane Scheidecker (SBDC x2255) at 345-2420.

FOR SALE: PAIR OF ANTIQUE turn-of-the-century English chairs. Beautifully carved backs, arms and legs. Newly upholstered seats. \$185 each. Please call 688-3838. Gayle Upp, Mailroom, x2574.

FOR SALE: Back again, beautiful Christmas swags for your front door, or specialized Christmas greenery for your fireplace mantle or your staircase. Swags and boughs decorated with fresh holly, beautiful plaid bows, satin ornaments, and optional snow. Only \$6.75. Call Linda Myers, CWE, ext. 2883; or evenings 344-6483. Deliveries start after Thanksgiving.

DEADLINE FOR THE DAILY is noon on the day prior to publication on Mondays, Wednesdays and Thursdays. Submissions must include name, dept., and phone number. All items will be published at least once and more often if space permits.

Wednesday, December 5, 1990
Dead Week, Fall Term

THE DAILY

edited by Joan Aschim

Published for the staff of Lane Community College
747-4501, Ext. 2591

TODAY

- Christmas Show by Media Center/Mass Comm., Cable 35, 8 a.m. (see below)
- Instructional Cabinet meets at 1:30 p.m., Board Room (first half-hour is an interview with v.p. for instruction candidate)
- Faculty Council meets briefly at 4 p.m., following 3 p.m. interview with v.p. for instruction candidate, to discuss all three finalists, PE 205
- Reception for Marna Crawford, 3 p.m., Health 114
- Blue Cross/Blue Shield and SelectCare reps available, 9 a.m.-Noon, PE 205
- Watercolors by Edna Kennel on exhibit in Women's Center

LAST CANDIDATE INTERVIEWS TODAY - Mike Crow interviews for v.p. for instruction today. Rich Brightman and Jim Ellison interviewed on Monday and Tuesday, respectively. The following sessions are open to all staff:

- 10:30 a.m. Classified Council, Board Room
- 11:00 a.m. Non-instructional Managers, Board Room
- 1:30 p.m. Instructional Cabinet, Board Room
- 2:00 p.m. Reception, Renaissance Room
- 3:00 p.m. Faculty Council, PE 205 (4 p.m. meeting follows)

STUDENTS FEATURED IN CABLE TV CHRISTMAS SHOW - Don't miss the first annual Christmas Show produced by the Media Center and Mass Communication Department. It will air on Cable 35 today at 8 a.m., Dec. 6 and 7 at 10 a.m. Cable 34 will air the program on Dec. 21 at 7:45 p.m. The Christmas Show features the talents of students from Performing Arts and Mass Communication.

- Michael Maze, Mass Comm., ext. 2473

DID YOU GET YOURS? - Distribution to classified staff of the new Blue Cross/Blue Shield medical and medical/vision insurance booklets has been completed via intercampus mail. If you did not receive your copy, received an incorrect copy, or have questions, please call Marie Nelson, Personnel Services, ext. 2590.

LEAGUE VISITORS SHARE INSIGHTS ABOUT DECISION-MAKING - League for Innovation representatives shared insights about participative decision-making at their institutions at Friday's all-staff forum. As one of the League visitors said, "There will be 40 reports about what was said here today." Here's one of them.

Dr. Thomas W. Fryer, Jr., of Foothill-De Anza Community College District in California, said his district is in a major review of its system. He said that he has been making decisions with a cabinet. He sends agendas for meetings to 100 or more staff at the district's two colleges, writes down decisions made during cabinet meetings in longhand, and sends copies of the handwritten notes to the same 100 people. Relevant articles also appear in the staff newsletter. One problem has been that the board has felt it couldn't say no to a unified population of staff, faculty and students. Fryer said that the most important aspect of a shared decision-making system is determining at what point the CEO makes a decision.

Dr. Donald J. Carlyon of Delta College in Michigan said his school discusses issues via a single assembly that includes three-fourths of the entire staff. Most faculty attend the assembly. The assembly has voting divisions and a voting senate. Decisions can be passed back and forth between the divisions, the senate, and himself, before reaching the board. "When consensus does reach the board, it is very complete," said Carlyon. He said decision-making sometimes takes forever, but the system works because people believe in it. It has been in place at Delta throughout the institution's 30-year history.

CLOSED

- "Student Health Services will be closed from 12-noon (that's high noon, for all you Gary Cooper fans) on Friday, Dec. 14, until 8 a.m. on Wednesday, Jan. 2. We wish all of you a healthy and happy holiday season!" - Student Health Services Staff, ext. 2665.

- Financial Services will be closed Friday, Dec. 14, 11 a.m. - 1:30 p.m.

HOME GAMES THIS WEEK - Men's basketball hosts Yakima C.C., Dec. 6; the women's team hosts a tip-off tournament Dec. 7 and 8, with Linn-Benton, Umpqua, and Southwestern Oregon community colleges.

UNITY FORUM COMMENTS AND THANKS - A large majority of the more than 200 participants in the Dec. 1 "Striving for Unity: Economic Transitions in the Timber Crisis" conference agreed that it was a success. Some typical quotes from the conference evaluations regarding "the more important things you learned":

"...there is concern for Oregon's workers and unity to find a solution."

"...a lot of timber workers have gone past denial and are willing to work on a transition."

"...that so many timber workers are interested in working with environmentalists."

"All sides want to work together...for a solution."

"...that there is hope."

Much praise is due to the many people who made this unique forum possible:

Jerry Moskus, for courage in endorsing a conference on difficult issues characterized by deep divisions and intense feelings;

Larry Warford, for encouragement, sound advice, and good humor during trying times;

Laura Tamura, Shirley Pearson, and Sally Sparkman, President's Office, for help above and beyond the call of duty;

Barbara Wein, League for Innovation Task Force on Peace Studies, for her expertise;

Gary Anderson, Trish Hamer, and Edna Kennel of Printing/Graphics for saving the day (twice);

Terry Caron, Delphine Blankenship, Joyce Kofford, and Susan Sutton for late Friday afternoon help;

Dick Reid, Skip Hubbard, Jerry Seifert, Corinne Meehan, Rick McKenzie, and Ralph Wilson of Performing Arts for cooperation and practical advice;

Bob Tegge for delicious food and potables; Angie Tretnoff for mailing advice and assistance;

Jane Wojcik, Linda Riepe, Georgia Fryback, Crystal Baker, and Heide Stalder for excellent child care;

Diane Dann and Joan Aschim for marketing advice and publicity;

Barbara Hasbrouck and JoAnne McGillivray, English, for taking a million messages;

Terry Caron, Janet Dahlgren, and Student Service Associates Tonya Jordan, Steve Griffin, Virginia Cockerline, and Kathy Baker for helping at registration;

The 34 timber-community, environmental, union, and concerned citizen organizations that co-sponsored the conference;

and Dennis Gilbert, U.O. Physics Dept., for his knowledge and skill as a co-coordinator and moderator.

- Jerome Garger, English & Social Studies Depts., conference co-coordinator

SPECIAL THANKS TO FACILITATORS

The most popular and useful activity at the Dec. 1 unity conference was the small-group discussion session following the first panel presentation. In mixed groups of timber workers, environmentalists, union members, management representatives, and concerned citizens, participants discussed their experiences and views regarding the current timber crisis. Special thanks to Julie Aspinwall-Lamberts of Research, Planning & Evaluation, for helping recommend facilitators; to Tim Blood of Counseling and Ron Mitchell of Social Science for briefing facilitators; and to the facilitators themselves, who volunteered their Saturdays at a busy time of the year: Wendell Anderson, Georgeann Baker, Patti Basconcillo, Tom Birkenhead, Jim Cobb, Jean Conklin, Janet Dahlgren, Joyce Fish, Phyllis Geyer, Joyce Godels, Jack Hart, Sandy Ing, Cheryl Kepner, Joe Dremers, Bonnie Lamont, Diane Lane, Randa Law, Ellice Liecter, Peggy Marston, Marie Matsen, Ginny Nelson, Dave Oatman, Michael Omogrosso, Jessica Overturf, Ellen Palmer, Ann Marie Prengaman, Lynne Swift, Betty Vail, and Judith Watt.

- Jerome Garger, English & Social Studies Depts., conference co-coordinator

- ADS-

FOR SALE: Craftsman router with table and floor stand, \$60. Innertherm 6' water-filled portable electric baseboard-type heater, \$40. John Winkist, Counseling, ext. 2321; or 344-1125.

RIDE OFFERED to S.F. bay area, leaving around Dec. 16, returning the 23rd or 24th, share gas and driving. Contact Vicki Levine, Study Skills, x2439; or 345-8344.

PHEASANTS FOR SALE: Smoked, fresh-dressed or live, really great for dinners, parties, and gifts. I will deliver to LCC. Jim Pitney, (Board of Education), Junction City, 998-2711.

FOR SALE: Earth-tone plaid queen-size hide-a-bed couch, very nice condition, \$150; plush early-American rust color corduroy couch, easy chair and ottoman, very nice condition, set for \$200. Call Russ Bowen (Aviation Maintenance x2379) at 345-5483 evenings.

FOR SALE: Velour sofa, natural tones, floral design, GOOD CONDITION, \$50. Please call Pat Langan, Financial Services, x2605.

FOR SALE: Brand new Hot Spot point-of-use electric water heater, \$75. Cord of fir for \$80; or hardwood, dogwood or oak for \$120. Call Diana Reiber, Business, x2221.

DEADLINE FOR THE DAILY is noon on the day prior to publication on Mondays, Wednesdays and Thursdays. Submissions must include name, dept., and phone number. All items will be published at least once and more often if space permits.

Thursday, December 6, 1990
Dead Week, Fall Term

THE DAILY

edited by Joan Aschim

Published for the staff of Lane Community College
747-4501; Ext. 2591

TODAY

- Christmas Show by Media Center/Mass Comm., Cable 35, 10 a.m.
- Watercolors by Edna Kennel on exhibit in Women's Center

CLASSIFIED COUNCIL TO MEET

The Classified Council will meet from 3-5 p.m., Wednesday, Dec. 12, PE 205. Representatives and all classified staff are welcome to attend. If you have agenda items, please contact your representative or Rosemary Busby at ext. 2255; or Elaine Matchett at ext. 2896.

NEW VIDEOS AVAILABLE

Two new resource programs were recently licensed and taped off satellite. They are available for check-out from the library for classroom use. Accelerated Learning: Awakening the Spirit of America is a 60-minute program. Four top international instructors in the field of accelerated learning explore how colleges and corporations can successfully apply accelerated learning techniques into their classroom instruction or training programs. The Power of the Past with Bill Moyers: Florence is a 90-minute video. Broadcast journalist Bill Moyers, guided by art historians and Florentine citizens, tours the city's rich Renaissance legacy, exploring the roots of our common artistic, architectural and human heritage.

FINANCIAL AID WORKSHOPS SCHEDULED

The Financial Aid office will conduct information workshops on how to fill out the 1991-92 Financial Aid Form (FAF). As usual, there have been changes in the application, so students are encouraged to attend. Please share this information with your students. For details, contact Frank Marshall, F.A., ext. 2266. The workshop schedule: at 10 a.m.: Jan. 8, Board Room; Jan. 23, M&A 250; Jan. 29, Board Room. At 2 p.m. in APR 216: Jan. 10, 15, 16, 24, 31, and Feb. 5.

LEATHERS ELECTED

Cynde Leathers, Telecourses Coordinator, has been elected to serve as chair of the Oregon Community College Telecommunications Consortium for 1990-91. The OCCTC was organized to extend services to those segments of the population that cannot be served by conventional educational practices.

FACILITATORS ASKED TO EVALUATE FORUM

Facilitators at the Dec. 1 conference, "Striving for Unity: Economic Transitions in the Timber Crisis," who gave so much of their time and expertise, are asked one more favor. Please evaluate the experience and send your comments and suggestions for improvement to conference co-coordinator Jerome Garger, English Dept., ext. 2162 or 2419

QUOTE

President Jerry Moskus in a Tuesday speech in which he mentioned Measure 5: "Some problems are so complex that one has to be highly intelligent and well informed just to be undecided."

SURPRISE PARTY

A surprise retirement party for 25-year employee Edna Kennel of Printing/Graphics will be held on her last work day, Monday, Dec. 10, at 3 p.m., in Printing/Graphics, Center building basement.

CHANGE DUE FOR INSERVICE?

The Faculty Professional Activities Team has received a 33 percent response rate to its questionnaire to full- and part-time faculty. Seventy percent of respondents said a change is needed for fall inservice. Therefore, the team is considering a new plan for 1991-92 which would include spreading three days of the eight inservice days as follows:

September 16, 17, 18, 19, 20 (week prior to classes beginning)

October 11 (state inservice day)

January 2, 3 (classes would begin Jan. 6, 1992, same as U.O.)

We need your feedback on this proposed format before we make further plans. Please let us know by directing your responses to Julie Aspinwall-Lamberts, Research, Planning & Evaluation, by the end of finals week. - Joan Ryan, Chair, Faculty Professional Activities Team; Business Dept., ext. 2221

FORMER LCC STUDENT RESCUES RADIO STATION

Norm Gravem, 1988 LCC graduate, is the new supervisor of student-funded radio station KTEC 89.5 FM at the Oregon Institute of Technology in Klamath Falls, according to a report in the Nov. 9 issue of that city's newspaper, the Herald and News. Graven, 41, is credited with rescuing the station from haphazard management and programming and building its image as a "respectable" source of alternative music and programs.

THANKS

"Sue McDonald, Financial Services, recently contributed two of her evenings plus preparation time to facilitate a goal-setting activity of the Cottage Grove City Council. After I was contacted by Jeff Towery, Cottage Grove City Manager, for a facilitator, I called Sally Wilson of Research, Planning and Evaluation. Sally mentioned that Sue was one of the LCC employees who received training as a group facilitator. When Jeff contacted Sue, he found she was willing to facilitate the goal-setting activity for the council. Jeff indicated that the sessions went well and he and city council were 'very appreciative and pleased' with Sue's efforts. Thank you, Sue, for a great job!" - Don Strahan, Coordinator, LCC at Cottage Grove

COLLEGE ADOPTS POSITION ON HOUSING ISSUE

The Board of Education authorized President Jerry Moskus to issue the following statement about low-cost student housing. The statement is in response to private developers' request for College support of a 300-unit apartment complex proposed for a site between the 30th avenue campus and Interstate 5. The statement: "The Lane Community College Board of Education recognizes the need for affordable housing within the local area for students attending or wishing to attend LCC. Affordable student housing in close proximity to Lane Community College would be a benefit to students." Developers have said that College endorsement of the project would help them obtain a low-interest loan and avoid the need to rezone the property. The property is currently zoned for farm use, which allows development deemed "essential" to schools. The housing project has been discussed at several meetings of the Board and the College Council. LCC's statement is expected to be formally adopted at the Dec. 12 board meeting.

RESIGNATIONS

Two resignations were accepted by President Jerry Moskus late Tuesday. They were effective at the end of the work day on Monday. Terry Hagberg, who was removed as department head of Flight Technology last summer and notified that his employment would end next February, opted to resign ahead of his scheduled termination date. Chief flight instructor Ron Gustafson also decided to leave. The resignations were offered and accepted with the agreement that neither the two nor the College will pursue litigation.

- ADS-

FOR RENT: My Sunriver cabin is still available for 2-3 days the week before Christmas. A couple of weekends in January are also available. \$50/night. Sleeps 6 (cozily). Only 18 miles from Mt. Bachelor. Ginny Nelson, E&FL, ext. 2419; or 686-8188.

LAST CHANCE TO SIGN UP for the first Macintosh user group meeting is Friday, Dec. 7. Sign up in the Center Computer Lab, CEN 478, at the front counter of the Bookstore, or at the Electronics counter. - Barb Barlow, Apple Rep., Bookstore, ext. 2679.

FOR SALE: Mop dolls. Clever, cute, lots of decorations, great gifts. Can make about 10. \$25 each. Call Carole Carlson, Security, x0; or 485-7494.

FOR SALE: Cannondale ultralight ten-speed racing bicycle, \$200. 20" boys black BMX bicycle with mag wheels and pads, \$30. Children's chrome scooter, hand brakes, mags and pads, \$30. Tom Schoen, Campus Services, x2567; or 726-6417.

FOR SALE: Craftsman router with table and floor stand, \$60. Innertherm 6' water-filled portable electric baseboard-type heater, \$40. John Winquist, Counseling, ext. 2321; or 344-1125.

RIDE OFFERED to S.F. bay area, leaving around Dec. 16, returning the 23rd or 24th, share gas and driving. Contact Vicki Levine, Study Skills, x2439; or 345-8344.

PHEASANTS FOR SALE: Smoked, fresh-dressed or live, really great for dinners, parties, and gifts. I will deliver to LCC. Jim Pitney, (Board of Education), Junction City, 998-2711.

FOR SALE: Earth-tone plaid queen-size hide-a-bed couch, very nice condition, \$150; plush early-American rust color corduroy couch, easy chair and ottoman, very nice condition, set for \$200. Call Russ Bowen (Aviation Maintenance x2379) at 345-5483 evenings.

FOR SALE: Velour sofa, natural tones, floral design, GOOD CONDITION, \$50. Please call Pat Langan, Financial Services, x2605.

FOR SALE: Brand new Hot Spot point-of-use electric water heater, \$75. Cord of fir for \$80; or hardwood, dogwood or oak for \$120. Call Diana Reiber, Business, x2221.

FOR SALE: Back again, beautiful Christmas swags for your front door, or specialized Christmas greenery for your fireplace mantle or your staircase. Swags and boughs decorated with fresh holly, beautiful plaid bows, satin ornaments, and optional snow. Only \$6.75. Call Linda Myers, CWE, ext. 2883; or evenings 344-6483. Deliveries start after Thanksgiving.

WOMENSPACE NEEDS HELP - Volunteers are needed for a gift-wrap booth at a holiday fair from 11:30 a.m. to 2:30 p.m., or 2:30 p.m. to 5:30 p.m. on your choice of Saturday or Sunday, Dec. 8, 9, 15, 16, 22, 23. Thanks! - Sue Thompson, H&PE, ext. 2552; 689-4487

DEADLINE FOR THE DAILY is noon on the day prior to publication on Mondays, Wednesdays and Thursdays. Submissions must include name, dept., and phone number. All items will be published at least once and more often if space permits.

Monday, December 10, 1990
Finals Week, Fall Term

THE DAILY

edited by Joan Aschim

Published for the staff of Lane Community College
747-4501, Ext. 2591

TODAY: EDNA KENNEL'S RETIREMENT RECEPTION - Today is Edna Kennel's last work day at LCC. Join friends and fans for her retirement party at 3 p.m. in Printing/Graphics, Center building basement.

EARLY PAYCHECKS - December payday for staff will be Dec. 21. Workstudy paychecks will be Dec. 14. - Judy Ward, Personnel Services

BOARD TO MEET WEDNESDAY - The Board of Education will meet at 7:30 p.m. on Wednesday, Dec. 12, in the Board Room. On the agenda: child care, LCC at Florence, OSPIRG, Nov. 6 election results, 1991-92 budget calendar, 1989-90 year-end audit, affordable student housing, Japanese University, and new courses and course revisions.

COLLEGE COUNCIL TO MEET - The College Council will meet Tuesday, Dec. 11, from 1:30-3 p.m. in the Boardroom.

FACULTY COUNCIL TO MEET - The Faculty Council will meet Thursday, Dec. 13, from 3-5 p.m. in the Board Room.

CLASSIFIED COUNCIL TO MEET - The Classified Council will meet Wednesday, Dec. 12, 3-5 p.m., in the PE 205. If you have agenda items, please contact your representative or Rosemary Busby at ext. 2255; or Elaine Matchett at ext. 2896.

PRINTING/GRAPHICS REQUEST - Please submit all work orders due the first two days of winter term, Jan. 2 and 3, by Friday, Dec. 14, to Printing/Graphics.

CLOSED - Student Records, Veteran's Office, and Admissions will be closed from 11:30 a.m. to 1 p.m. on Friday, Dec. 14.

OFFICE CLOSED BUT DEADLINE STILL APPLIES - The Curriculum/Scheduling office will be closed for moving Dec. 17 and 18. Delphine Blankenship, ext. 2308, in the Office of Instruction, will be taking Curriculum/Scheduling calls during the move. Only enrollment changes, cancellations and additions will be made on the moving days. Spring term schedule work sheets are due Dec. 17 and should be delivered to Delphine. Curriculum is moving to Center 310. - Nancy Jaques, Curriculum/Scheduling

WEIGHT MANAGEMENT WORKSHOP - A free workshop on weight management, exercise and eating disorders will be held Tuesday, Dec. 11, 1-2:30 p.m., in PE 205. U.O. doctoral student Britt Ellis will discuss the latest research obesity and the relationship of body weight to fat, how to effectively determine body composition and management by exercise and nutrition throughout the life span, effectiveness of the ever-growing diet industry, and the effects of socialization on dieting and eating disorders. The workshop is sponsored by Health & Physical Education.

RENEW YOUR LOCKERS - Once again it is time to renew your staff lockers in H&PE. The Fee is \$12 per term and may be paid in Financial Services. The receipts must be submitted to the locker room supervisors by the end of the second week of classes. If not, the lockers will be cleared and reissued. Any personal items removed from the lockers will be held in the issue room for one week before discarding. The supervisors are Lori Bell, ext. 2557; and Bill Schmutz, ext. 2272.

ALTERNATIVE VISIONS PERFORMS "ANTIGONE" - The Alternative Visions class presents Antigone at 12-noon Tuesday, Dec. 11, in Performing Arts main theater. "You will see a wild and an unusual approach," says instructor Patrick Torelle.

LCC FOUNDING PRESIDENT TO ASSUME POST AT OSU - Dale Parnell, president of the AACJC and founding president of LCC, has been appointed professor of education at Oregon State University. He assumes the post fall term 1991 and will establish a graduate program to train community, technical and junior college leaders.

INSTRUCTOR AND COLLEGE WIN MOTORCYCLE SAFETY AWARDS

LCC and one of its motorcycle safety instructors, Don Metzler, were named Sponsor of the Year and Instructor of the Year respectively at the Dec. 1 annual meeting of Team Oregon, a statewide motorcycle safety program run by the Oregon Traffic Safety Commission. Don has been teaching motorcycle safety at Lane Community College for five years. He also teaches in the early childhood education program. Metzler says motorcycle fatalities in Oregon are at their lowest point in 20 years. He attributes the improvement to the training program and a state law passed in 1989 that requires riders under 19 years of age to take the course. Last year, LCC served about 200 people, up from 135 in 1989. Statewide, 1,250 people took the course this year, compared to 633 last year. Motorcycle safety courses are offered through Continuing Education.



MARSHALL WILL COORDINATE LCC'S PARTICIPATION IN CONFERENCE - V.P. for Student Services Bob Marshall will coordinate LCC's participation in the Student Success Strategies Conference to be held Feb. 14-16 at the Oregon Convention Center in Portland. Registration is due Dec. 31. If you're interested in attending, call Joyce Kofford, ext. 2315, as soon as possible. Registration forms have been sent out; please return them to Joyce, or call her if you need one. Applications received after Dec. 31 will be accepted only on a space available basis.

LAST WEEK FOR CLASSIFIED, MANAGEMENT TO CHANGE INSURANCE - If you're interested in changing from one medical insurance plan to another, or adding a dependent to your medical/vision or dental insurance coverage, you may do so during open enrollment, through Dec. 14. New enrollment forms may be picked up at the receptionist's desk in Personnel Services. All changes and additions must be received by Marie Nelson, Personnel Services, by 5 p.m. on Dec. 14 to be effective January 1, 1991.

- ADS-

FOR SALE: '84 Audi 5000S wagon, 5-speed, new tires, new tune, top condition, sun roof, etc., \$5,450/offer. Dwight Miller (Math x2400), please call 687-1055.

FOR SALE: Panasonic microwave oven, like new, \$125. Larry Warford, President's Office, ext. 2302.

FOR SALE: 13" Toshiba color portable TV, good working condition, \$100. Jean Geiger, Business, x2159.

CLARINET FOR SALE, German-made Schreiber & Sohne (as best as I can read it), with hard case. All I know is it makes a squeaky noise and my neighbors won't let me play it anymore. It couldn't be me, so it probably needs work. Take it for sixty bucks. Okay, fifty bucks. Tom Birkenhead, Business, x2221.

FOR SALE: Computer parts: Amdek 310A amber monitor; save your eyes with this one; like new; \$45. IBM color graphics card, \$50. Joystick, \$30. Multi-I/O short card with clock/calendar, serial and parallel ports, and game adapter port, \$40. Joystick and I/O card still in boxes, never used. Gary Rholl, Business, x2221; or 484-0955, leave message.

FOR SALE: Back by popular demand! Crocheted and decorated Christmas ornaments. Bears, bells, wreaths, and many, many more one-of-a-kind handmade treasures. See in Forum 107. Cindi Tedder, Mass Comm., x2475.

DEADLINE FOR THE DAILY is noon on the day prior to publication on Mondays, Wednesdays and Thursdays. Submissions must include name, dept., and phone number. All items will be published at least once and more often if space permits. Recycle this Daily.

MENU:

	MON	TUES	WED	THUR	FRI
Soup	BEEF NOODLE CREAM OF BROCCOLI CHILI	SPLIT PEA CHICKEN JUMBO CHILI	TACO SOUP WILD RICE CHILI	BEAN PASTA POLISH POTATO CHILI	MEDITERRANEAN CHOWDER MUSHROOM CHILI
Cafeteria	BAKED HAM WITH PINEAPPLE SAUCE HAMBURGER PIE PHILLY BEEF & CHEESE	PORK CHOPS WITH DRESSING FRENCH DIP SANDWICH EGGPLANT SANDWICH	CARNE ASADA TAMALE PIE TACO BURGER	SWISS STEAK CHICKEN SALAD SANDWICH PASTRAMI & CHEESE	CAPTAINS PLATTER TUNA POTATO CHIP CASSEROLE BEEF AND SWISS
Mini Lunch	CHICKEN LASAGNA	PORK ALMANDINE	BEEF ENCHILADAS	BEEF STEW	CHICKEN & SPAGHETTI
Vegetarian	VEGGIE FRY	BROCCOLI SOUFFLE	MEXI RICE	MACARONI & CHEESE	CORN FRITTERS
Veggie	BRUSSEL SPROUTS YELLOW SQUASH MASHED POTATOE	GREEN BEANS HOMINY MASHED POTATOES	MEXI CORN PEAS AND CORN MASHED POTATOES	BEETS BROCCOLI MASHED POTATOES	WAX BEANS CARROTS FRENCH FRIES
Snack Bar	BAKED HAM WITH PINEAPPLE SAUCE	PORK CHOPS WITH DRESSING	CARNE ASADA	SWISS STEAK	CAPTAINS PLATTER

Wednesday, December 12, 1990
Finals Week, Fall Term

THE DAILY

edited by Joan Aschim
Published for the staff of Lane Community College
747-4501, Ext. 2591

TODAY:

- Board of Education meeting, 7:30 p.m., Board Room.
- Classified Council meeting, 3-5 p.m., PE 205.

ED-NET DEMONSTRATION SCHEDULED - If you're wondering what's happening with Ed-Net these days, you can see a demonstration today from 11 a.m. to 12-noon at Lane Education Service district office in Eugene.

OSBA BOARD ASKS THAT COMMUNITY COLLEGES BE FUNDED - Oregon School Boards Association says it will ask the Legislature in January to replace lost property taxes for both school districts and community colleges. It says the replacement should continue until an alternative revenue source is found. That replacement should be a sales tax, says OSBA, if it provides adequate revenue for long-term refinancing of public education at least through 2020.

WELLNESS NEEDS? - Please remember to return the Wellness Survey to Charlotte Brown, Health Occupations, by Friday, Dec. 14. The survey is designed by the Wellness Committee to target needed campus wellness activities and information. If you didn't receive a survey and want one, or have questions about the Wellness Committee, please call Judith Gabriel, ext. 2699.

MEETING CANCELLED - The Faculty Council will not meet Thursday, Dec. 13, as previously announced. Watch The Daily for the next meeting date.

FOOD SERVICES WILL COLLECT DISHES - If you have any Food Service dishes or trays in your department, please call Food Services at ext. 2670 and they will gladly pick them up for you.

CLOSED - Financial Services will be closed Friday, Dec. 14, from 11 a.m. to 1:30 p.m.

CLOSED FOR MOVING AND HOLIDAYS - The LCC Job Placement Office will be closed from Dec. 19, 1990 through Jan 1, 1991. The office will be moving on Dec. 19, 20, and 21, and will be closed for the holidays afterward. New office locations: Student Employment Service and Graduate Placement Service, Forum 301 and 302; Joan Adams, Forum 303; College Work Study, Forum 304. Happy holidays to all from the Job Placement Office staff.

GUIDELINES AVAILABLE - Faculty Professional Activities guidelines and applications are available from Roxanne Flowerday or Pat John in the Study Skills Department (call ext. 2439). Look for lavender color forms. Deadlines for applying: January 4 and 25, March 1 and 29, April 26, and May 31. Committee members are: Willie Kealoha, Jim Mathews, Richard Null, Joan Ryan, Sharon Thomas, and Pat John.

LAST WEEK FOR CLASSIFIED, MANAGEMENT TO CHANGE INSURANCE - If you're interested in changing from one medical insurance plan to another, or adding a dependent to your medical/vision or dental insurance coverage, you may do so during open enrollment, through Dec. 14. New enrollment forms may be picked up at the receptionist's desk in Personnel Services. All changes and additions must be received by Marie Nelson, Personnel Services, by 5 p.m. on Dec. 14 to be effective January 1, 1991.

LCC WINS GRANT FOR COMMUNITY-WIDE CHILD CARE RESOURCE AND REFERRAL - LCC was awarded a \$15,000 grant from the Oregon Child Care Commission to begin developing a child care resource and referral program for Lane County, says David Andrews, child care consultant hired by the College in September. The grant covers the period from January 1 to June 30, 1991. Andrews says most of the funds will be used to develop provider recruitment and training methods, parent education, a computerized database of providers, and employer contracts. Program services probably won't begin until June, says Andrews. A one-year grant continuation will be sought for fiscal year 1991-92 which begins July 1.

PRINTING/GRAPHICS REQUEST - Please submit all work orders due the first two days of winter term, Jan. 2 and 3, by Friday, Dec. 14, to Printing/Graphics.

IN THE NEWS - Maureen Hammond-Kashdan, Work & Family Seminars Project Coordinator and Parent Education Instructor, and Wendell Anderson, Small Business Development Center Communications Specialist, have co-authored an article on how to make the holidays less stressful and more meaningful. The article will appear in the Sunday, Dec. 16 Register-Guard. On that same day, Maureen will team up with Don Mihaloeuw, LCC/UO instructor and family therapist, to discuss a similar topic on KLCC-FM from 11 a.m. to 12-noon.

SEVERAL STAFF RECEIVE THANKS FROM COMMUNITY

George Prummer, a career-changer in his mid-40s, credits five staff for helping him win one of 24 slots in the Mt. Hood Physical Therapy Assistance Program against a field of 130 applicants: Jean Conklin, Career Information Center Coordinator; Dal Haverland, Counseling; Doug White, Health Occupations; Dave Roof, Cooperative Work Experience; and Susan Burch, Correctives. "Without the counselors and resources I was introduced to at Lane, I would not have been able to achieve my goal of being accepted there."

Juan Acosta, participant in last summer's Industrial Technology short-term training program for furniture makers from the Dominican Republic, recently wrote to commend the College for quality of the coursework, the facilities, the location, and especially of the staff.

Bud Lewis of the Oregon School Activities Association wrote to thank LCC for hosting the state cross-country and volleyball championships this fall. He said LCC staff made everyone feel welcome and respected. "Bob Foster and Gary Knapp deserve special thanks for their courtesy and assistance. It amazes me, too, the cross section of faculty that comes out to work year after year. It seems they really enjoy helping young people make each event memorable. They really are tremendous ambassadors for Lane Community College."

Ron Baurer of the American Association of Retired Persons wrote to thank Bill Porter for helping arrange facilities for the AARP's driving program in the Florence area; and to thank Laura Ory and Janet Saschbach for scheduling and registering students.

RENEW YOUR LOCKERS - Once again it is time to renew your staff lockers in H&PE. The Fee is \$12 per term and may be paid in Financial Services. The receipts must be submitted to the locker room supervisors by the end of the second week of classes. If not, the lockers will be cleared and reissued. Any personal items removed from the lockers will be held in the issue room for one week before discarding. The supervisors are Lori Bell, ext. 2557; and Bill Schmutz, ext. 2272.

OFFICE CLOSED BUT DEADLINE STILL APPLIES - The Curriculum/Scheduling office will be closed for moving Dec. 17 and 18. Delphine Blankenship, ext. 2308, in the Office of Instruction, will be taking Curriculum/Scheduling calls during the move. Only enrollment changes, cancellations and additions will be made on the moving days. Spring term schedule work sheets are due Dec. 17 and should be delivered to Delphine. Curriculum/Scheduling is moving to Center 310.

- ADS-

DONATIONS NEEDED: I am working with a homeless person who could use some help over the winter months. Donations of food would be appreciated - things that do not require cooking or refrigeration are needed (soups or cocoa would be okay). If you can help, please do. Thank you. - Cherrill Hemminger, Admissions (x2207), 746-5090.

WANTED: Snow chains for size P195-75/R14 tires. Would like to borrow or rent chains for days of 12/19 through 12/30/90. We will be going across mountain pass to and from central Oregon and must carry chains. Call Pat Williams, International/Multicultural Services, ext. 2165; or 485-3730.

UNIQUE RENTAL SITUATION: Three-bedroom house adjoining a preschool. Share driveway and yard mornings. Ideal for individuals not at home during the day. School is not in session Fridays or during the summer. \$425/month, less for single occupancy. For more information, call John Winquist, Counseling, ext. 2321; or 344-1125.

FOR SALE: Wireless home security system by Fasco, \$175; and a Prestige car security system by Audiovox, \$75. Both are new and have never been used. Lisa Henry, ABE, ext. 2919.

LAST CHANCE FOR CHRISTMAS SWAGS: Beautiful Christmas swags for your front door, or specialized Christmas greenery for your fireplace mantle or your staircase. Swags and boughs decorated with fresh holly, beautiful plaid bows, satin ornaments, and optional snow. Only \$6.75. Call Linda Myers, CWE, ext. 2883; or evenings 344-6483.

FOR SALE: Computer parts: Amdek 310A amber monitor; save your eyes with this one; like new; \$45. IBM color graphics card, \$50. Joystick, \$30. Multi-I/O short card with clock/calendar, serial and parallel ports, and game adapter port, \$40. Joystick and I/O card still in boxes, never used. Gary Rholl, Business, x2221; or 484-0955, leave message.

FOR SALE: '84 Audi 5000S wagon, 5-speed, new tires, new tune, top condition, sun roof, etc., \$5,450/offer. Dwight Miller (Math x2400), please call 687-1055.

FOR SALE: Panasonic microwave oven, like new, \$125. Larry Warford, President's Office, ext. 2302.

FOR SALE: 13" Toshiba color portable TV, good working condition, \$100. Jean Geiger, Business, x2159.

CLARINET FOR SALE, German-made Schreiber & Sohne (as best as I can read it), with hard case. All I know is it makes a squeaky noise and my neighbors won't let me play it anymore. It couldn't be me, so it probably needs work. Take it for sixty bucks. Okay, fifty bucks. Tom Birkenhead, Business, x2221.

DEADLINE FOR THE DAILY is noon on the day prior to publication on Mondays, Wednesdays and Thursdays. Submissions must include name, dept., and phone number. All items will be published at least once and more often if space permits. Recycle this Daily.

Thursday, December 13, 1990
Finals Week, Fall Term

THE DAILY

edited by Joan Aschim

Published for the staff of Lane Community College
747-4501; Ext. 2591

ATHLETICS TODAY AND TOMORROW - Women's basketball plays Clark College, here, 6 p.m.; and Pierce College, here Friday, 6 p.m.

NOT TODAY - The Faculty Council will not meet today, as previously announced. Watch The Daily for the next meeting date.

SUMMARY OF HOLIDAY CLOSURES, HOURS:

- Financial Aid, closed Dec. 13, 27, and 28, except for regular phone service from 8 a.m. to 5 p.m. on those days.
- Purchasing Services, closed from 12-noon Friday, Dec. 21 to 8 a.m. Thursday, Dec. 27; and all day Tuesday, Jan. 1, 1991.
- Career Information Center closed Dec. 15 through Jan. 1. Winter term hours will be Monday and Tuesday from 9 a.m. to 7 p.m.; Wednesday, Thursday and Friday from 9 a.m. to 5 p.m., and Saturday from 9 a.m. to 12-noon.
- Women's Center will remain open during the holiday break; Clients in Action staff will be available but the Transitions to Success office will be closed.
- Student Health Services, Friday, Dec. 14, from 12-noon until 8 a.m., Wednesday, Jan. 2.
- Financial Services, closed Friday, Dec. 14, from 11 a.m. to 1:30 p.m.
- Job Placement Office, closed Dec. 19 through Jan 1. The office is moving: Student Employment Service and Graduate Placement Service to Forum 301 and 302; Joan Adams to Forum 303; College Work Study to Forum 304.
- Curriculum/Scheduling, closed Dec. 17 and 18. Refer calls to Delphine Blankenship, ext. 2308, Office of Instruction. Only enrollment changes, cancellations and additions will be made on the moving days. Spring term schedule work sheets are due Dec. 17 and should be delivered to Delphine. Curriculum/ Scheduling is moving to Center 310.

LONG-RANGE FUNDING IS CONCERN - LCC could lose \$1 million to \$2 million in state funding for the 1991-92 fiscal year, President Jerry Moskus told College Council on Tuesday. He said state budget people have talked of a possible 10 to 15 percent reduction in state support. LCC could meet that challenge, but has to be concerned about continuing cuts in the next several years. Ballot Measure 5 takes away LCC's strong local support and substitutes a lower state standard of support.

In another discussion, Council members supported full general fund underwriting of LCC Foundation's budget. The Foundation's budget request becomes part of the usual budget process and will be considered along with other department's requests.

College Council meets again Tuesday, Jan. 8, 1:30-3 p.m. in ADMIN 216.

ENROLLMENT COULD GROW - Winter term registration is running about 1,000 students ahead of the same date a year ago, says V.P. for Student Services Bob Marshall. Some of that is due to people registering earlier than usual to get first chance at needed classes, he said, but it also reflects higher than expected numbers of transfer and new students.

FORMER MILLWORKER GOES INTO BUSINESS AFTER ATTENDING LCC - Former Pope & Talbot employee Steve Saxon opened an insurance office in Oakridge November 1, after studying at LCC, going through the Dislocated Worker Program, and working with other Eugene insurance agents. Saxon will visit Eugene one day a week to serve business here. His number in Oakridge is 782-4209. Saxon's story has been reported in Brown's Business Reporter, Eugene; and the Dead Mountain Echo, Oakridge.

BARTON APPOINTED TO CITY COMMITTEE - Steve Barton, KLCC's general manager, has been appointed to a one-year term on the City of Eugene's Citizen's Involvement Committee. He will join the mayor and a couple members of the city council and others in reviewing how the city is involving citizens in government activities. Barton is in his 14th year at KLCC and in his fourth year as manager.

VIEWBOOKS PUBLISHED - New viewbooks have been created to promote the college to high school students. You can see one in the display case on the second floor of Administration. The viewbook was a joint effort of Shan Titus in High School Relations, Institutional Advancement, and Baden and Associates.
- Susan Sutton, ext. 2593.

FOOD SERVICES WILL COLLECT DISHES - If you have any Food Service dishes or trays in your department, please call Food Services at ext. 2670 and they will gladly pick them up for you.

THANKS, GUYS - Special thanks to Darrell Allyn (HVAC operator), Bob Cramblit (special maintenance), Alvin Howard (special maintenance), Marvin Luzier (electrician), and Ken Sprague (electrician). These staff of Campus Services have just installed our new scoreboards recently purchased for the women's and men's basketball programs. Without their expertise, we may have been using chalkboards to record our scores! Thanks for your help. - Bob Foster, Athletic Director.

MOTORCYCLE AWARDS RESULT FROM TEAMWORK - LCC and motorcycle safety instructor Don Metzler received awards for excellence from the Oregon Traffic Safety Commission recently, as reported in The Daily. Shannon Kracht, Director of Continuing Education, wishes especially to acknowledge Jean Whiteside of CE for her continued dedication to the project; and Bill Kyker and Pat Langan of Financial Services for their assistance in expediting the project.

LIVE FROM THE HILTON - Randa Law, Training & Development Specialist, will discuss the Dislocated Worker Program on KHNN 1320 AM radio's live talk show, "Talk of the Town," on Saturday, Dec. 15, from 11 a.m. to 12-noon. KHNN broadcasts from the Hilton.

PRINTING/GRAPHICS REQUEST - Please submit all work orders due the first two days of winter term, Jan. 2 and 3, by Friday, Dec. 14, to Printing/Graphics.

PROCUREMENT OFFICE CLIENT WINS CONTRACT - A woman-owned business has landed a \$240,000 contract for operations and maintenance of the U.S. Environmental Protection Agency (EPA) research lab in Newport with help from the Government Contract Acquisition Program (GCAP) at LCC's Small Business Development Center. The award to Team Support Services of Corvallis includes three one-year options and has created six full-time positions. It is the second contract with EPA won by Team Support Services with GCAP's help. GCAP provides bidding opportunities, contract assistance and counseling to small businesses wishing to sell their produce or service to federal, state and local government. For more information, contact Procurement Specialist David Welsh at ext. 2255.

CANDEE RECEIVES NATIONAL APPOINTMENTS - Social Science Instructor Steve Candee has been appointed to serve on the governing board of the National Social Science Association and to become a member of the editorial board of the Pacific Northwest edition of the National Social Science Journal. NSSA cited Steve's "...outstanding work as a scholar and teacher" in a letter announcing the appointments.

- ADS-

CAN YOU HELP? I am coordinating contributions for a low-income family with five children ages 13, 12, 10, 9 and 7. If you can donate children's or adult's clothing or have other items to donate, please call Mary Michaud, LEAP, ext. 2939. Thanks.

FOR SALE: 25" color TV, dark oak console, cable ready/remote ready, excellent condition, \$200 or best offer. Karen Bond, Social Science, x2428; or 726-5019 eves.

DONATIONS NEEDED: I am working with a homeless person who could use some help over the winter months. Donations of food would be appreciated - things that do not require cooking or refrigeration are needed (soups or cocoa would be okay). If you can help, please do. Thank you. - Cherrill Hemminger, Admissions (x2207), 746-5090.

WANTED: Snow chains for size P195-75/R14 tires. Would like to borrow or rent chains for days of 12/19 through 12/30/90. We will be going across mountain pass to and from central Oregon and must carry chains. Call Pat Williams, International/Multicultural Services, ext. 2165; or 485-3730.

UNIQUE RENTAL SITUATION: Three-bedroom house adjoining a preschool. Share driveway and yard mornings. Ideal for individuals not at home during the day. School is not in session Fridays or during the summer. \$425/month, less for single occupancy. For more information, call John Winquist, Counseling, ext. 2321; or 344-1125.

FOR SALE: Wireless home security system by Fasco, \$175; and a Prestige car security system by Audiovox, \$75. Both are new and have never been used. Lisa Henry, ABE, ext. 2919.

LAST CHANCE FOR CHRISTMAS SWAGS: Beautiful Christmas swags for your front door, or specialized Christmas greenery for your fireplace mantle or your staircase. Swags and boughs decorated with fresh holly, beautiful plaid bows, satin ornaments, and optional snow. Only \$6.75. Call Linda Myers, CWE, ext. 2883; or evenings 344-6483.

FOR SALE: Computer parts: Amdek 310A amber monitor; save your eyes with this one; like new; \$45. IBM color graphics card, \$50. Joystick, \$30. Multi-I/O short card with clock/calendar, serial and parallel ports, and game adapter port, \$40. Joystick and I/O card still in boxes, never used. Gary Rholl, Business, x2221; or 484-0955, leave message.

FOR SALE: '84 Audi 5000S wagon, 5-speed, new tires, new tune, top condition, sun roof, etc., \$5,450/offer. Dwight Miller (Math x2400), please call 687-1055.

FOR SALE: Panasonic microwave oven, like new, \$125. Larry Warford, President's Office, ext. 2302.

FOR SALE: 13" Toshiba color portable TV, good working condition, \$100. Jean Geiger, Business, x2159.

DEADLINE FOR THE DAILY is noon on the day prior to publication on Mondays, Wednesdays and Thursdays. Submissions must include name, dept., and phone number. All items will be published at least once and more often if space permits. Recycle this Daily.

Monday, December 17, 1990

THE DAILY

edited by Joan Aschim

Published for the staff of Lane Community College
747-4501, Ext. 2591

EARLY PAYCHECKS

December payday for staff will be Dec. 21.

CLOSURES

The College is closed for holidays on Dec. 24, 25, and 26, and Jan. 1. In addition, some departments have reported these specific schedules:

- The Daily closed Dec. 18 through Jan. 1.
- Institutional Advancement closed Dec. 24 through Jan. 1.
- Printing/Graphics closed Dec. 24 through Jan. 1.
- Financial Aid counter closed Dec. 27 and 28.
- Purchasing Services closed 12-noon Dec. 21 through Dec. 27; and Jan. 1.
- Career Information Center closed through Jan. 1. Winter term hours will be Monday and Tuesday from 9 a.m. to 7 p.m.; Wednesday, Thursday and Friday from 9 a.m. to 5 p.m., and Saturday from 9 a.m. to 12-noon.
- Women's Center will remain open during the holiday break; Clients in Action staff will be available but the Transitions to Success office will be closed.
- Job Placement Office closed Dec. 19 through Jan 1. The office is moving: Student Employment Service and Graduate Placement Service to Forum 301 and 302; Joan Adams to Forum 303; College Work Study to Forum 304.
- Curriculum/Scheduling closed Dec. 17 and 18. Refer calls to Delphine Blankenship, ext. 2308, Office of Instruction. Only enrollment changes, cancellations and additions will be made on the moving days. Spring term schedule work sheets are due Dec. 17 and should be delivered to Delphine. Curriculum/ Scheduling is moving to Center 310.

NEWS FROM FLORENCE

Chamber Vice President Named - Bill Porter, Director of LCC at Florence, has been named V.P. for the Florence Area Chamber of Commerce. LCC at Florence is a very active Chamber participant and each month presents a feature program at Chamber Forum meetings.

Literacy Grant Awarded - The Florence Rotary Club has presented LCC at Florence with \$475 to purchase a full operating library of literacy materials. Items given to students will be constantly replenished so that a complete inventory is maintained. This generous gift fills a long-standing need in the providing of literacy training in western Lane County. As a result of this grant a literacy coalition has been formed to respond to local needs. The Florence Soroptomist Club also has voiced support for this program.

Census Bureau Applauds Florence Campus - The U.S. Dept. of Commerce, Bureau of the Census, has presented LCC at Florence with a certificate of appreciation. The College acted as headquarters for local census activities during the 1990 census.

STUDENT SUCCESS STRATEGIES CONFERENCE

The Student Success Strategies Conference will be held Feb. 14-16 at the Oregon Convention Center in Portland. V.P. for Student Services Bob Marshall will coordinate LCC's participation. Registration is due Dec. 31. If you're interested in attending, call Joyce Kofford, ext. 2315, as soon as possible. Registration forms have been sent out; please return them to Joyce, or call her if you need one. Applications received after Dec. 31 will be accepted only on a space available basis.

RECRUITERS TO VISIT

Bi-Mart Corporation will be on 30th avenue campus all day Wednesday, Jan. 9, to interview business management and sales/marketing students who have a two-year degree or are about to complete one, and are interested in applying as an associate manager trainee. For details, contact Diane Morrow, Graduate Placement Coordinator, Job Placement Office, ext. 2326 or 2164.

ATTENTION CLASSIFIED

Keep those surveys coming in! The Classified Professional Development Team is looking forward to receiving your ideas for staff development via the survey you received last week. If you lost yours, or didn't receive one, contact Julie Baker, ext. 2544, for another. The team needs your ideas to be sure every area of the campus is represented. Fill out that survey today and send it Marie Matsen, Research, Planning & Evaluation. Thanks!

SUPPLEMENTAL LIFE INSURANCE

Supplemental life insurance with Standard Insurance Company is available to classified and management employees and spouses from \$30,000 to \$300,000 in increments of \$10,000. Premium rates for each \$10,000 are based upon the employee's or spouse's age and are paid through payroll deduction. For details, contact Marie Nelson, Personnel Services, ext. 2590

PERS DEADLINES APPROACHING

The Public Employees Retirement System wants to remind you that if you wish to file a variable annuity election, change the percentage on a previous election, or cancel your variable election, the form must be on file with PERS by Dec. 31 to be effective for 1991. For further details or to obtain a form, contact Vicki Ellison, Personnel, ext. 2589.

THE MAYOR WANTS YOU

The City of Eugene is recruiting applicants for a vacant seat on the Budget Committee and we are inviting members of your organization to apply. The Budget Committee is made up of eight lay members and eight City Councilors. This committee is responsible for reviewing and analyzing the executive operating and capital budgets for the City. The Committee submits its recommendations to the City Council for enactment. The deadline to submit applications is Friday, January 4, 5 p.m. Application forms can be obtained from the City Manager's Office, City Hall, 777 Pearl St., Room 105. For more information, call the City Manager's Office at 687-5010. - Mayor Jeff Miller

KLCC/KLCO TO BROADCAST LIVE DEAD CONCERT

KLCC 89.7 FM Eugene/Springfield and KLCO-90.5 FM ewport will broadcast a live New Year's Eve concert by the Grateful Dead. The music begins at 7 p.m. on Dec. 31 with the Rebirth Brass Band; a set from Branford Marsalis will immediately follow. The Dead will take the stage somewhere around 10 p.m. and play until about 2 a.m.

LCC EXHIBIT FEATURES PORTLAND'S HENK PANDER

Dutch-born Henk Pander of Portland, who paints his interpretations of experiences and events, opens the new year at Lane Community College's Art Department Gallery with an exhibit from January 2-25. Pander will give a slide-lecture on Wednesday, Jan. 16, at 1 p.m. in Forum 308, followed by a reception at 2:30 p.m. in the Gallery.

Pander says his oil paintings mostly express "my own sense of trying to find out where I fit in the contemporary world." All the paintings are large, ranging in size from approximately five by seven feet to eight by nine feet. They have a fantastic, dreamlike quality, says Pander.

The exhibit, slide-lecture and reception are sponsored by the Associated Students of Lane Community College. Gallery hours are 8 a.m. to 10 p.m. Monday through Thursday, and 8 a.m. to 5 p.m. Friday.

DIRECTORY CHANGE

Add Paula Chan, KLCC-FM, ext. 2486/2224, to page 46.

- ADS-

FOR SALE: Back by popular demand! Crocheted and decorated Christmas ornaments. Bears, bells, wreaths, and many, many more one-of-a-kind handmade treasures. See in Forum 107. Cindi Tedder, Mass Comm., x2475.

CAN YOU HELP? I am coordinating contributions for a low-income family with five children ages 13, 12, 10, 9 and 7. If you can donate children's or adult's clothing or have other items to donate, please call Mary Michaud, LEAP, ext. 2939. Thanks.

FOR SALE: 25" color TV, dark oak console, cable ready/remote ready, excellent condition, \$200 or best offer. Karen Bond, Social Science, x2428; or 726-5019 eves.

DONATIONS NEEDED: I am working with a homeless person who could use some help over the winter months. Donations of food would be appreciated - things that do not require cooking or refrigeration are needed (soups or cocoa would be okay). If you can help, please do. Thank you. - Cherrill Hemminger, Admissions (x2207), 746-5090.

WANTED: Snow chains for size P195-75/R14 tires. Would like to borrow or rent chains for days of 12/19 through 12/30/90. We will be going across mountain pass to and from central Oregon and must carry chains. Call Pat Williams, International/Multicultural Services, ext. 2165; or 485-3730.

UNIQUE RENTAL SITUATION: Three-bedroom house adjoining a preschool. Share driveway and yard mornings. Ideal for individuals not at home during the day. School is not in session Fridays or during the summer. \$425/month, less for single occupancy. For more information, call John Winquist, Counseling, ext. 2321; or 344-1125.

FOR SALE: Wireless home security system by Fasco, \$175; and a Prestige car security system by Audiovox, \$75. Both are new and have never been used. Lisa Henry, ABE, ext. 2919.

LAST CHANCE FOR CHRISTMAS SWAGS: Beautiful Christmas swags for your front door, or specialized Christmas greenery for your fireplace mantle or your staircase. Swags and boughs decorated with fresh holly, beautiful plaid bows, satin ornaments, and optional snow. Only \$6.75. Call Linda Myers, CWE, ext. 2883; or evenings 344-6483.

FOR SALE: Computer parts: Amdek 310A amber monitor; save your eyes with this one; like new; \$45. IBM color graphics card, \$50. Joystick, \$30. Multi-I/O short card with clock/calendar, serial and parallel ports, and game adapter port, \$40. Joystick and I/O card still in boxes, never used. Gary Rholl, Business, x2221; or 484-0955, leave message.

DEADLINE FOR THE DAILY is noon on the day prior to publication on Mondays, Wednesdays and Thursdays. Submissions must include name, dept., and phone number. All items will be published at least once and more often if space permits. Recycle this Daily.