

# The Daily

Edited by Joan Aschim

Published for the staff of Lane Community College

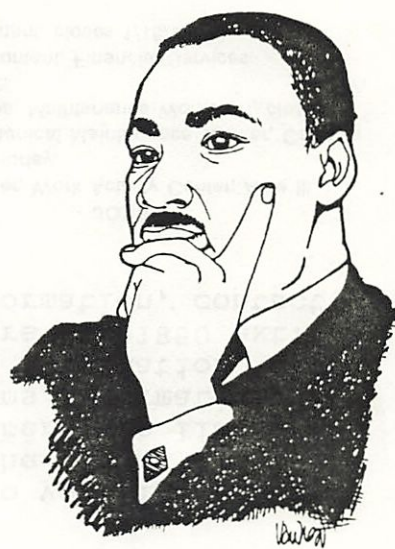
747-4501, ext. 2591

Monday, January 6, 1992

Week One of Winter Term

**MARTIN LUTHER KING DAY DEVOTED TO STAFF DEVELOPMENT** - The theme, "A Dream of Community: Diversity, Collaboration, Communication," will guide all-staff in-service on Jan. 20 in observance of Martin Luther King Day. Students have the day off. Here's a highlight of events:

8-8:30 a.m.	Coffee & Refreshments Cafeteria
8:45-10 a.m.	General Session for All Staff Performing Arts Theater "Building a Diverse Community" by Dr. Luke Barber
10-10:15 a.m.	Break
10:15-11:30 a.m.	General Session for All Staff Performing Arts Theater "Shared Decision Making at LCC" by President Jerry Moskus
11:30 a.m.-2:30 p.m.	Department Meetings
3-5 p.m.	Employee Group Professional Development Meetings (Classified, Faculty, Management)



Martin Luther King, Jr.  
1929-1968

**BOARD TO MEET WEDNESDAY** - The LCC Board of Education will meet at 7:30 p.m. Wednesday, Jan. 8, in ADM 216. The agenda includes an 8 p.m. public hearing of the 1991-92 supplemental budget to be followed by formal adoption and appropriations. Other action items include acceptance of the 1990-91 year-end audit, a bid award for recycling, approval of a financing package, approval of 1991-92 budget transfers, and approval of personnel recommendations. Prior to the meeting, the board will meet in closed executive session at 5:30 p.m. in CEN 107 to conduct the president's annual evaluation and hear an update on classified staff negotiations.

**WINTER TERM ENROLLMENT GROWTH MATCHES FALL** - Winter term credit headcount was up 521 students over last year as of Jan. 2, says Vice President Bob Marshall. The jump from 7,699 to 8,220 students is the same 7 percent increase experienced fall term. The greatest demand continues to be in science, social science, and English and foreign languages. Demand for business classes appears to have leveled out. Non-credit headcount was up about 40 students to a total of 2,597.

**ART GALLERY OPENS WITH NEW SHOW AND RECEPTION** - Paintings by Eugene artist Ken Paul will be on display in the Art Department Gallery Jan. 6-24. A reception for Paul will be held Friday, Jan. 10, from 7:30-9:30 p.m. in the gallery, where he will return Jan. 22 to lecture on his work at 1 p.m. Paul teaches at the U.O. and won the jurors' prize in the Eugene Mayor's Art Exhibition this year. The show is sponsored by ASLCC.

**AUCOIN TO VISIT** - U.S. Congressman Les AuCoin, Democratic candidate for the U.S. Senate, will speak to Steve Candee's American Government class Jan. 10 at 2 p.m. in CEN 401. Limited seating is available for guests.

**SMOKING ALTERNATIVES UNDER STUDY** - Following the direction of the Board of Education in December, V.P. Dick Hillier is getting a handle on how much it might cost to provide facilities for smokers. He has asked administrators in all college buildings to identify an area that could be "retrofitted" as a smoking area. Cost projections will follow. The board will discuss the smoking policy again in February.

**CLASSIFIED STAFF TO CONSIDER FACT-FINDING** - Classified employee union members will meet tonight at 5:15 p.m. in FOR 310 to consider asking for fact-finding as the next step in the negotiations process. Mediation held Dec. 20 was unproductive, says union negotiator Alen Bahret.



**SUCCESS CONFERENCE REGISTRATION DEADLINE NEARS** - The Student Success Strategies VII conference to be held in Portland at the Oregon Convention Center from Feb. 19-21 requires receipt of registration by Jan. 24. Registration packets are in the mail. If you have not received one or need more information, contact Joyce Kofford at ext. 2315. This conference attracts presenters from community colleges throughout Oregon and Washington. This year's theme is, "Making Dynamic Connections."

**ATHLETIC TICKETS ON SALE** - Tickets to Lane athletic events are \$3 for LCC staff and other adults; \$2 for students and seniors; \$1 for LCC students with ID cards; and children under six years old are admitted free. Men's and women's basketball season tickets are \$18 for adults, \$10 for students, and \$30 for families.

These prices apply to a **special Titan Benefit Basketball Doubleheader** on Saturday, Jan. 11, against Chemeketa. Women play at 6 p.m. and men at 8 p.m. Proceeds go to Campus Ministry. Come meet coaches Jim Boutin and Dave Loos and the mysterious "Unknown Titan."

**WELDING DONATION BOOSTS PROGRAM** - LCC's welding program has received a donation of thousands of pieces of equipment, tools and supplies worth \$176,529 from Eugene Welders Supply. Welding instructor Mark Huntington says many of the donated items will help the program repair existing equipment and assist in classroom instruction. Items include drills, bits, metals, spray powder, brushes, switches, ear plugs, insulators, rods, nozzles, hardhats, welding hoods, torches, valves, bushings, nuts, cutters, wrenches, keys, clamps, and consumable electrodes used in welding.

The gift more than doubles the \$135,969 worth of in-kind donations receipted by the LCC Foundation since July. In-kind donations are gifts of equipment or materials given by a donor for use at Lane.

**THANKS FOR RECEPTION** - "A sincere thanks to my friends at LCC who gave me such a wonderful send-off into my new state of retirement. My fervent wish on parting is for a fair and fast finish to the negotiations for the classified contract. A very happy New Year to you all." - Barbara Hasbrouk

**KEEPING IN TOUCH** - Donna Morgan of Campus Services writes, "Thanks to all my friends at LCC for their continued love and support over the past four months. I recently finished a six-week series of chemo, and another series starts this new year. I continue to gain my strength and abilities in use of word/number skills. (My sense of humor is as strong as ever.) Best wishes to all in the New Year!"

**RESUME WORKSHOPS SCHEDULED** - Resume and job search skills workshops will be held Jan. 8 and 22 from 4-6 p.m. in FOR 310. To register, contact Diane Morrow, Job Placement Office, ext. 2164.

**ANSWERS TO INSURANCE QUESTIONS AVAILABLE** - For answers to your insurance claims questions, you are encouraged to call direct to the claims department of your insurance carrier. The telephone numbers are listed on your ID card and following: Blue Cross/Blue Shield claims information, 342-3317 or 800-452-7390; Blue Cross/Blue Shield general information, 342-3317 or 800-452-7278; OEA Choice 800-452-0914; SelectCare 485-1850 ext. 3642 for Roberta Taylor; VSP 800-334-9201. For more information, contact Marie Nelson in Personnel Services at ext. 2590.

**- CAFETERIA MENU -**

	MON	TUE	WED	THUR	FRI
<b>SOUP</b>	Oregon Vegetable Canadian Cheese Chili	Cream corn and tomato. Creole Chili	Potage Parisienne Italian Pizza Chili	Ham and Bean Tomato Chili	Corn Chowder Beef Tomato Rice Chili
<b>CAFETERIA</b>	Meatloaf Egg, Chicken, Chili Casserole Corned Beef on rye	Roast Beef Macaroni & Veggie Casserole Kraut & Cheese	Spaghetti with Meat Sauce Beef & Potato Casserole Ham & Cheese San.	Sweet & Sour Pork over Rice Ham & Chicken Casserole Breaded Chix San.	Breaded Lemon Cod Beef Pot Pie Tuna Melt
<b>MINI LUNCH</b>	Seven Seas Cass.	Scalloped Chicken	Italian Rigatoni	Tuna Noodle Supreme	Scalloped Potato & Ham
<b>VEGETARIAN</b>	Potato Pancakes	Suoji	Stuffed Peppers	Tomato Spinach Bake	Rice Pilaf
<b>VEGGIE</b>	Broccoli Stewed Tomatoes Mashed Potatoes	Mexi corn Beets Mashed Potatoes	Carrots Lima Beans Mashed Potatoes	Mixed Veggie Cauliflower with Cheese Sauce Mashed Potatoes	Peas & Carrots Zucchini Mashed Potatoes
<b>SHACK BAR</b>	Hot Turkey San.	B B Q Chicken Wings & Legs	Pasta Veggie Italiano	Pork or Turkey Fajita's	Salisbury Steak

**- JOBS -**

- Trainer, Work Activity Center, Aide III, closes today.
- Mechanical Maintenance Worker, Campus Services, Maintenance Worker VI, closes 1/13/92.
- Accountant, Financial Services, Accountant, closes 1/15/92.

**- ADS -**

FOR SALE: Unopened copy of DOS 4.01. \$20. Bert Ewing, Computer Services, ext. 2829.

**DAILY INFORMATION** - Deadline is 12-noon of the working day prior to publication. The Daily is published Mondays, Wednesdays, and Thursdays during fall, winter and spring terms; and Tuesdays during summer term. The schedule varies during term breaks and additional special issues may be published anytime. Submissions must include name, department, and extension number. This information is printed with ads. Ads are free and limited to staff. Submissions may be made in writing or E-Mail but will not be taken over the phone. All items will be published at least once and more often if space permits.



# The Daily

Edited by Joan Aschim

Published for the staff of Lane Community College

747-4501, ext. 2591

Wednesday, January 8, 1992

Week One of Winter Term

## **TODAY:**

• The Board of Education meets at 7:30 p.m. in ADM 216. A public hearing of the 1991-92 supplemental budget commences at 8 p.m. The board meets in closed executive session at 5:30 p.m. in CEN 107.

**FACULTY TO MEET THURSDAY** - Faculty Council will meet Jan. 9 at 3 p.m. in ADM 216. The group will discuss committee structure and in-service.

**PRESIDENT SETS OFFICE HOURS** - President Moskus has set his schedule for drop-in visitors winter term. The hours are 1-5 p.m. on Jan. 27, Feb. 3, Feb. 17, Mar. 6, and Mar. 16.

The president asks that meetings be limited to 15 minutes so that everyone can be seen; that groups be limited to six or less; and that issues that can be handled effectively through normal channels continue to be addressed that way. "No topic is off limits, as long as our discussing it is legal, ethical and proper," says Moskus. "I'm interested in getting advice and addressing concerns."

**WORK TAKES AN INSPIRATIONAL SPIN ON MARTIN LUTHER KING DAY** - January 20 will be a day of professional development opportunity at LCC. Although a regular workday for staff, no classes will be held and offices will be closed to the public. Normal operations will be suspended to allow staff to attend the day's activities.

The theme of diversity and community will be launched by a playful and insightful presentation by guest speaker Dr. Luke Barber on "Building a Diverse Community." He speaks from 8:45-10 a.m. in the Performing Arts Theater. Barber draws from the teachings of Martin Luther King, Jr., to discuss how we can value our differences and live cooperative, collaborative and productive lives together at work.

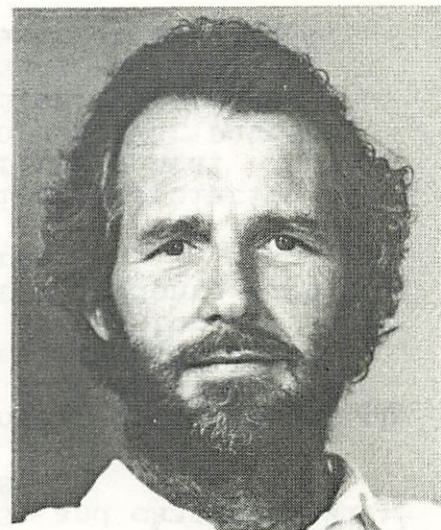
Barber is a philosopher, storyteller, author, teacher and consultant. He was professor of philosophy and humanities at Richland College of the Dallas Community College District for nearly two decades. He also served as Dean for Community Development and Special Assistant to the President at Richland where he worked on multicultural and diversity issues and curriculum. He also has worked in civil rights, prosecuting cases involving discrimination based on race and gender. He recently moved to Eugene with his wife Lee Paez, LCC director of Counseling. Coffee and refreshments are available in the cafeteria prior to Barber's address.

LCCEA president Don Micken reminds faculty that Martin Luther King Day is a regular work day devoted to professional development, not one of the eight contracted in-service days described in the faculty contract.

Thanks go to classified, faculty and management professional development teams and to the Diversity Task Force for guiding the day's program.

**NOMINATIONS SOUGHT FOR OUTSTANDING CLASSIFIED EMPLOYEE** - Attached to today's Daily is the nomination form for Outstanding Classified Employee of the Month for February. The form says it's due on Jan. 15 but the deadline has been extended to the 20th. Return nominations to the Office of Community and Economic Development, ADM 205.

The Outstanding Classified Employee of the Month Award is one of the outcomes of the Classified Professional Development Team. The team formed in 1990-91 to advocate professional and personal development for classified staff. Based on a survey of classified staff conducted in early 1991, the team recommended this award as a means for better recognition of classified staff. College Council gave its final blessing to the late last term. February is the first month of the new award.



*Dr. Luke Barber*



**MESQUITA HONORED** - Connie Mesquita, Multicultural Center coordinator and Diversity Task Force member, received a Community Service Award from Eugene Mayor Jeff Miller on Monday at the 1992 State of the City luncheon meeting.

In addition to her achievements at work, Mesquita serves on the board of the Chicano Affairs Center and the Lane County Latino Community Coalition. She helped found the Mission San Pablo program within Saint Mary's Catholic Church for the Catholic Hispanic population in the Eugene area.

She has a master's in counseling from Western Oregon State College.

**AUCOIN ROOM CHANGED** - U.S. Congressman Les AuCoin, Democratic candidate for the U.S. Senate, will speak to Steve Candee's American Government class Jan. 10 at 2 p.m. The class will meet in the Board Room, ADM 216, to provide more space for guests.

**CLASSIFIED VOTES FOR FACT-FINDING** - Classified employee union members voted Monday to ask for fact-finding as the next step in the negotiations process. A fact-finding report probably would be ready by mid-March.

**STAFF DIRECTORY CHANGE** - Make these changes in your 1991-92 staff directory for Jim Boutin: on page five, change ext. 2345 to 2553, and change PE 213 to PE 210. Note these same changes for pages 24 and 48.

**TICKETS ON SALE TO BENEFIT GAME** - The Titans play a benefit doubleheader on Saturday, Jan. 11, against Chemeketa. Women play at 6 p.m. and men at 8 p.m. Proceeds go to Campus Ministry. Come meet coaches Jim Boutin and Dave Loos and the mysterious "Unknown Titan." Tickets are \$3 for LCC staff and other adults; \$2 for students and seniors; \$1 for LCC students with ID cards; and children under six years old are admitted free.

**SIGN UP FOR GOLF TOURNEY** - The LCC Chapter of the American Association of Women in Community and Junior Colleges is holding its first annual miniature golf tournament on Thursday, Jan. 16, at 5:30 p.m., at Putt-n-Video, 1300 Mohawk Blvd., Springfield. Bring a wrapped white elephant gift. It costs \$2.25 to play golf. A no-host pizza party will follow. Please RSVP to Rosemary Busby at ext. 2925, or Julie Baker at ext. 2544.

**ENSURE PROPER CREDIT FOR TUITION WAIVERS** - To ensure proper credit for tuition waivers, employees must present the white copy of the waiver form after it's signed by employee, supervisor, and Personnel, to Financial Services, after registering on ClassLine. To ensure credit for courtesy appointments, volunteers must present the pink copy after it's signed by the volunteer, supervisor, dean or vice president, and Personnel, to Financial Services after registration on ClassLine. Both tuition waivers and courtesy appointments cover tuition only. Employees and volunteers are responsible for the registration fee, any class fees, and any finance or late charges if the payment and/or waiver are late in coming to Financial Services. Refer questions to Financial Services at ext. 2210.

**CONFERENCES TO START YOUR NEW YEAR** - For more information about the following seminars, contact Julie Baker at ext. 2544.

- Women in Consulting, Eugene, Jan. 11, \$49.
- Business Grammar & Usage for Professionals, Eugene, Jan. 14, \$99.
- Essentials of Desktop Publishing with WordPerfect, Eugene, Jan. 15, \$149.
- Leadership & Supervisory Skills for Women, Eugene, Jan. 23, \$69.
- Microsoft Windows Computing Seminar, Eugene, Jan. 23, free.
- Self-Discipline & Emotional Control, Eugene, Jan. 24, \$79.
- Raise Quality and Productivity with Employee Recognition, Santa Ana, Calif., Jan. 28, \$425.
- Managing Multiple Priorities, Dun & Bradstreet, Eugene, Jan. 29, \$155.

- JOBS -

- Job Developer, Work Activities Center, Specialist VII, closes 1/17.
- Clerk/Bookkeeper, Flight Technology Dept., Clerk III, closes 1/17.

- ADS -

FOR SALE: 1977 VOGUE MOTORHOME, 24', roof air, full bath, color TV, generator, awnings, security alarm, sleeps five, many extras. 72,600 miles. Dodge chassis. \$9,900. Original owner. NISHIKI 10-SPEED, 19-1/2" men's frame, like new, \$125. FRIGIDAIRE refrigerator, 14 cu.ft., white, \$100. Judith Watt, T&D, x2223 or 683-1530.

FOR SALE: BASSETT crib & mattress, mint green dust ruffle and sheets, includes mattress liner, \$50; high-chair, \$10; Royal manual typewriter, \$15. Contact Diane Morrow, JPO, x2164 or 747-8516.

FOR SALE: COMMODORE 64 system! Two computers, two disk drives, mono-monitor, Citizen 120D printer, tons of software and docs. \$325 or best offer. Dan Welton, Media Arts, ext. 2474; or 342-7222.

FOR SALE: Unopened copy of DOS 4.01. \$20. Bert Ewing, Computer Services, ext. 2829.

**DAILY INFORMATION** - Deadline is 12-noon of the working day prior to publication. The Daily is published Mondays, Wednesdays, and Thursdays during fall, winter and spring terms; and Tuesdays during summer term. The schedule varies during term breaks and additional special issues may be published anytime. Submissions must include name, department, and extension number. This information is printed with ads. Ads are free and limited to staff. Submissions may be made in writing or E-Mail but will not be taken over the phone. All items will be published at least once and more often if space permits.



# The Daily

Edited by Joan Aschim

Published for the staff of Lane Community College

747-4501, ext. 2591

Thursday, January 9, 1992

Week One of Winter Term

**TODAY:** Faculty Council meets at 3 p.m. in ADM 216.

**CHILD CARE FACILITY ALMOST READY** - A new modular building in the northwest parking lot on main campus should be ready to house the student-run child care cooperative by Jan. 13. Co-op Director Sue Ferguson says 30 children ages three months to five years have been enrolled by their student-parents. The co-op requests donations of toys and outdoor play equipment. The co-op's telephone extension will be 2025 as of Friday, Jan. 10.

**ART DEPARTMENT HOSTS RECEPTION** - A reception for Eugene artist Ken Paul will be held Friday, Jan. 10, from 7:30-9:30 p.m. in the Art Dept. Gallery. His paintings are on display through Jan. 24. Paul will return to the gallery to deliver a lecture on Jan. 22 at 1 p.m. .

**FRIDAY: AUCOIN VISITS CAMPUS** - U.S. Congressman Les AuCoin, Democratic candidate for the U.S. Senate, will speak to Steve Candee's American Government class Jan. 10 at 2 p.m. in ADM 216. Guests are welcome.

**KREMERS TO TALK ABOUT HIS TRIP TO RUSSIA** - Joe Kremers, social science instructor, recently returned from three months in Irkutsk, Siberia. He will speak in Jerome Garger's Peace & Conflict Studies class on Monday, Jan. 13, from 1-1:50 p.m. in CEN 401. His topic: "The Ex-USSR: Implications for Americans." Guests welcome.

**COUNCIL MEETS TUESDAY** - College Council will meet Jan. 14 from 3-5 p.m. in ADM 216.

**COUNSELOR TO DISCUSS TECHNICAL TRAINING** - John Winquist of Counseling will report on his fall term professional development leave on Wednesday, Jan. 15, at 4:15 p.m. in CEN 219. He studied technical training opportunities on his leave.

**TITANS PLAY** - Men's and women's basketball teams play Jan. 11 against Chemeketa to raise money for Campus Ministry. Staff can get in for \$3. Call Athletics at ext. 2215 for more information.

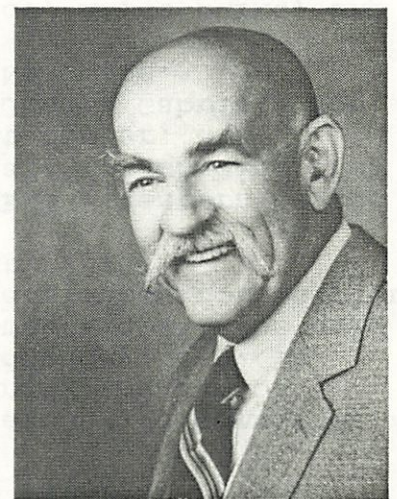
**TWO SEATS UP FOR ELECTION ON LANE COMMUNITY COLLEGE BOARD** - Seats representing Zones 1 and 4 on the Board of Education are up for election on March 24 by mail-in ballot. Candidates must file in person with the Lane County Elections Office, 135 E. 6th Avenue, Eugene, by January 23. A \$10 filing fee or a petition of support signed by at least 25 registered voters is required.

Zone 1 covers west Lane County census tracts 5, 7.01, 7.02, 8, 9.01, 9.02, 10, 25, 26, 27, 41, 42, and 43, including Florence. Zone 4 covers southeast Lane County census tracts 1, 11, 12, 13, 14, 15, 16, 17, 36, 4401, and 4402, including Cottage Grove. Candidates must live in the zone they wish to represent. The four-year terms begin July 1, 1992.



*Cindy Weeldreyer  
Board of Education*

Chuck Ivey of Crow currently holds the Zone 1 seat. He has been on the board since 1988. Cindy Weeldryer of Cottage Grove holds the Zone 4 seat. She was appointed in 1989 to fill an unfinished term vacated by Mae Westfall Cook. Both announced at the Nov. 13 Board of Education meeting that they will run for re-election.



*Chuck Ivey  
Board of Education*



**CENSUS DOESN'T QUITE CHANGE THE RULES FOR LANE** - LCC recently was advised that if its district population exceeded 300,000 according to the 1990 census, board elections would be limited to odd-numbered years according to Oregon law. Research staff analyzed census information from Lane Council of Governments, the Center for Population Research and Census at Portland State University and 1990-91 population information and estimated the district population to be just under the mark at about 294,600.

**GUESTS WELCOME AT AAWCJC** - Anyone may attend upcoming executive committee meetings of the American Association of Women in Community and Junior Colleges, LCC chapter. The committee next meets on Wednesday, Jan. 15, from 4:30-5:30 p.m., in PE 231. A general membership meeting will be held on Friday, Jan. 17, from 12-1 p.m. in ADM 216 to generate ideas for chapter activities. - Cheryl Alonso, Job Placement Office, ext. 2579

**PROFESSIONAL-TECHNICAL PROGRAMS PROVIDE EXAMPLE TO OTHERS** - Western Nevada Community College in Carson City wrote to thank LCC staff for showing them how to set up a tech-prep degree program, job placement center, and cooperative work experience program. Appreciated are Judith Gabriel, Joe Freeman, Bob Way, Fred Meyer, Ted Kotsakis, and Becky Newcombe.

**CONCERT A SUCCESS** - Special thanks goes to Jim Greenwood, Alice Burke, and Carol Robe from Performing Arts, who were "instrumental" in making the LCC Faculty Concert in Florence a success. The early December concert helped in building bridges with western Lane County, and the music was terrific! - Florence staff

**FLIGHT TECH POPULAR DESTINATION FOR SCHOOL CHILDREN** - About 250 local school children have toured the Flight Technology Department in the past 14 months, reports chair Bob Farrand, Jr. The up-to-45-minute tours are conducted by staff members and include the new building, flight simulator, hangar, helicopter and airplanes. Kids get to sit in an airplane cockpit, handle the controls, and ask questions. The tour concludes with a aviation film. In November, visitors included cub scouts, kindergarten students, and the entire eighth grade aero-science class from Monroe Middle School.

**\$10,145 GIFT FROM SACRED HEART** - Sacred Heart Respiratory Care has donated \$10,145 to the LCC Foundation for the Family & Health Careers respiratory care program. This generous gift will be used to purchase a 7200 series microprocessor ventilator. The machine is used in critical care cases to assist in breathing or to breath for patients. The ventilator will be available for students in the respiratory care program to use on campus and at Sacred Heart with actual patients, in order to learn how to use this most up-to-date equipment.

**LEADERSHIP INSTITUTE ACCEPTING APPLICATIONS** - The 1992 Executive Leadership Institute sponsored by the League for Innovation in the Community College is accepting applications for the Aug. 9-14, 1992, conference to be held in Toronto, Ontario, Canada. Applications must reach the League by Feb. 14. For an institute brochure or more information, contact League representative Larry Warford at ext. 2302.

- ADS -

**MACINTOSH WORKSHOP:** A workshop on the Macintosh computer System 7 will be held Wednesday, Jan. 15, 2:30-3:30, CEN 316 (Library). All are welcome but RSVP by Jan. 14 to the Computer Store at 343-1434.

**FOUND:** One gold earring in the LCC Bookstore. To claim, come to the Bookstore office and identify.

**FOR SALE:** 1985 MAZDA 626, 4-door, 5-speed, air, cruise, excellent condition, \$4,950. Bill Klupenger, SBDC, x2965.

**FOR SALE:** '77 CHEV half-ton pickup, V-8, auto, low miles, \$2,600. '83 TOYOTA Corolla 2-door, good condition, \$2,100. John Winquist, on leave from Counseling, 344-1125.

**FOR SALE:** TWIN BEDS. Includes box springs, frames, and head boards. Rustic and sturdy look. \$30 for both. Laurie Wheatley, P/G, x2373, or 484-9652 eve's.

**AEROBICS CLASS HAS ROOM:** Use your staff tuition waiver to get into Aerobics to Classics from 5:16-6:30 p.m. Mondays and Wednesdays, PE 125, with instructor Janet Hollander. Register for this Continuing Education class through ClassLine. - Lorna Funnell, Cont. Ed., x2906.

**FOR SALE:** 1977 VOGUE MOTORHOME, 24', roof air, full bath, color TV, generator, awnings, security alarm, sleeps five, many extras. 72,600 miles. Dodge chassis. \$9,900. Original owner. NISHIKI 10-SPEED, 19-1/2" men's frame, like new, \$125. FRIGIDAIRE refrigerator, 14 cu.ft., white, \$100. Judith Watt, T&D, x2223 or 683-1530.

**FOR SALE:** BASSETT crib & mattress, mint green dust ruffle and sheets, includes mattress liner, \$50; high-chair, \$10; Royal manual typewriter, \$15. Contact Diane Morrow, JPO, x2164 or 747-8516.

**FOR SALE:** COMMODORE 64 system! Two computers, two disk drives, mono-monitor, Citizen 120D printer, tons of software and docs. \$325 or best offer. Dan Welton, Media Arts, ext. 2474; or 342-7222.

**DAILY INFORMATION** - Deadline is 12-noon of the working day prior to publication. The Daily is published Mondays, Wednesdays, and Thursdays during fall, winter and spring terms; and Tuesdays during summer term. The schedule varies during term breaks and additional special issues may be published anytime. Submissions must include name, department, and extension number. This information is printed with ads. Ads are free and limited to staff. Submissions may be made in writing or E-Mail but will not be taken over the phone. All items will be published at least once and more often if space permits.



# The Daily

Edited by Joan Aschim

Published for the staff of Lane Community College

747-4501, ext. 2591

**Monday, January 13, 1992**

**Week Two of Winter Term**

**TODAY:** - Instructor Joe Kremers will speak about his trip to Irkutsk, Siberia, in Jerome Garger's Peace & Conflict Studies class, from 1-1:50 p.m. in CEN 401. Guests welcome.

**COUNCIL TO WELCOME ALBRO** - Newly-hired affirmative action director Donna Albro will be introduced at College Council at its Jan. 14 meeting from 3-5 p.m. in ADM 216. Also on the agenda: construction priorities, 1992-93 college calendar, smoking policy, in-service days and proposals, shared decision-making report revision and implementation, board policy handbook revisions, and shared decision-making session for Martin Luther King Day.

**PRESIDENT CONTINUES HIGH APPROVAL RATING INTO SECOND YEAR** - The Board of Education evaluated President Jerry Moskus in closed executive session on Jan. 8. He received high marks again this year. Chair Pat Riggs said to the president, "Without all your help, I firmly believe that we would not be allocating extra funds tonight at our budget hearing. Few people know, because of your modesty, how often you sat at the capitol and worked with legislators and the OCCA to ensure our new tax base funding." She also cited Moskus' implementation of shared governance, on-site child care, added classes, and board and staff collaborative planning.

**BUDGET PASSES** - The Board of Education passed the 1991-92 supplemental budget Jan. 8 by unanimous vote. Much of the \$4.8 million budget provides for additional classes and building construction and improvements.

**RECYCLING FARMED OUT** - Campus Ministry is discontinuing recycling, administrators said at the Jan. 8 board meeting. A request for bids attracted only one proposal, from Weyerhaeuser Paper Company. The board voted six-to-one in favor of the one-year contract. Larry Mann voted no after raising a question about paying for someone to do our recycling. The contract will cost \$7,100 for the remainder of 1991-92.

**RESIGNATION ANNOUNCED** - LCC Budget Committee Chair Catherine Lauris has submitted her resignation, said board chair Riggs Jan. 8. Lauris has served on the committee since 1986 and also served on the board from 1970 to 1982. "I don't know what to do without her," said Riggs. Board member Roger Hall has the responsibility for appointing a replacement.

**FINANCIAL REPORTS APPROVED** - The Board of Education approved unanimously at its Jan. 8 meeting the 1990-91 year-end audit and a refinancing package.

**CLASSIFIED NEGOTIATIONS DRAW COMMENT** - At the Jan. 8 board meeting, ASLCC treasurer Rachel Lindsay said students support classified staff and hope for a resolution to contract negotiations. Faculty union president Don Micken said an increasing number of faculty are expressing concern over the lack of a classified contract settlement. He said he will try to get more faculty to cover events such as the Valley River open house which may be boycotted by classified staff. LCCEA President Jerry Sirois asked the board to direct its negotiators to put its offers in writing.

**FINAL CLASSIFICATION WORKSHOP SET** - The third and final session of the classification workshop has been rescheduled for Wednesday, Jan. 22, 2:30-4 p.m., DTC 302. Set for the convenience of Downtown Center staff, any classified and management employees may attend. A video of the Dec. 4 workshop is available in the Library in the reserve tray under "LCC-Classification" for those who cannot attend.

**RETURN TO MEDIATION** - The classified union on Thursday accepted a request by college negotiators to return to mediation. The agreement postpones fact-finding. A date is being worked out.

**VALLEY RIVER CENTER OPEN HOUSE IS A GO** - The college will hold its open house at Valley River Center on February 8 and 9. This event is the college's largest outreach effort. Each year, the community responds with great positive feedback. Booth reservations should be made now with Joyce Kofford, ext. 2315.



**ACCOUNTING STAFF GETS COMPLIMENTS** - Financial Services received praise at the Jan. 8 board meeting. College accountants Coopers & Lybrand said the staff performed consistently good, clean work, and Oregon Small Business Development Center Network directors thanked FS staff for vital support.

**AN APPEAL FOR EQUIPMENT** - The Audio-Visual Dept. needs your help. There is a tremendous demand for overhead projectors and slide projectors this term. I would greatly appreciate information about any machines that classes don't seem to be using. It would also be wonderful to get machines back into circulation that may have been stored away somewhere. Please give me a call if you can help. Thanks! - Phil Powers, A-V Services, ext. 2370

**RETURN YOUR BOOKS** - The Library asks staff to check their home and office for LCC library books they are no longer using and return them as soon as possible. Thank you.

**RESERVE MATERIALS NEEDED NOW** - Instructors needing to have materials on reserve in the Library this term should bring them to Charlotte Kudlemyer as soon as possible. It could take up to a week to make them available to students.

**CABINET TO MEET** - Instructional Cabinet will meet Wednesday, Jan. 15, at 1:30 p.m. in ADM 216

**CURRICULUM IDEA FORUM TO MEET** - This group will meet Wednesday, Jan. 15, at 3:15 p.m. in ADM 216, following Instructional Cabinet. If you have agenda items, contact Nancy Jaques by 12-noon Tuesday, Jan. 14, at ext. 2362. The forum is for curriculum being submitted for the Feb. 26 curriculum meeting.

**CLASSIFIED COUNCIL TO MEET** - This group will meet Wednesday, Jan. 15, at 3 p.m. in PE 205.

**STATE GRANT PROCESS ELIMINATED** - The State of Oregon has withdrawn from the federal Single Point of Contact program. This means we no longer need to provide copies of federal grant applications to the state Intergovernmental Relations Division. If you're completing a federal application that asks if it is "subject to review by state Executive Order 12372," you can simply mark "no." If you have questions, call Diane Dann at ext. 2592.

**COUNSELOR TO SPEAK** - John Winkquist of Counseling will report on technical training opportunities on Wednesday, Jan. 15, at 4:15 p.m. in CEN 219.

**AAWCJC TO MEET** - The executive committee of the LCC Chapter of the American Association of Women in Community and Junior Colleges will meet Wednesday, Jan. 15, from 4:30-5:30 p.m., in PE 231. Guests are welcome.

**KOREANS VISITING** - A group of 17 adult students are at LCC for a language and culture immersion program. Hosted by English as a Second Language and Customized Training staff, the group will be busy all month on campus and in the community. Principal instructor Demetri Lontos is thankful for "great cooperation among LCC staff" for the project. The group will attend Martin Luther King Day events, tour the Register-Guard, see a play, attend a trial by jury, trade lessons in preparing lunch with an American family, and other activities in addition to their four-hour-a-day, five-day-a-week classroom work.

**CAFETERIA MENU:**

	MON	TUE	WED	THUR	FRI
<b>SOUP</b>	Beef Noodle Cream of Broccoli Chili	Split Pea Chicken Gumbo Chili	Taco Soup Wild Rice Soup Chili	Polish Potato Bean Pasta Chili	Mediterranean Chowder Mushroom Soup Chili
<b>CAFETERIA</b>	Baked Ham with Pineapple Sauce Beachcomber Beef Casserole Philly Beef & Cheese	Pork Chops with Dressing French Dip San. Eggplant San.	Fiesta Casserole Tamales Pie Taco Burger	Seiss Steak Spaghetti with Ham & Peas Pastrami & Cheese	Captains Platter Tuna Noodle Cass. Beef & Swiss
<b>MINI LUNCH</b>	Chicken Lasagna	All American Goulash	Beef Enchiladas	Chicken Spaghetti	Beef Stew
<b>VEGETARIAN</b>	Veggie Fry	Macaroni & Cheese	Mexi Rice	Broccoli Souffle	Corn Fritters
<b>VEGGIE</b>	Brussel Sprouts Yellow Squash Mashed Potatoes	Green Beans Hominy Mashed Potatoes	Mexi Corn Peas & Carrots Mashed Potatoes	Beets Broccoli Mashed Potatoes	Wax Beans Corn French Fries
<b>SHACK BAR</b>	B B Q San.	Broccoli & Ham Au Gratin	Hot Beef San.	Hot Turkey Salad	Calazone

**- ADS -**

**WANTED: FEMALE BADMINTON player(s)** during intramurals times, MWF 12-1 p.m. Great exercise and fun! Beginner to intermediate levels. Contact Gloria Jarvis, Fin. Svcs., x2604, if interested.

**FOR SALE: 19-INCH COLOR TV** "Supremacy" brand made by RCA for Macy's. Works fine. Mother-in-law thought we needed a new one. \$80. Kris Fox, KLCC, x2484.

**FOR RENT: MT. BACHELOR VILLAGE** condo, fully furnished, one bed plus Murphy bed in living room, with fireplace, \$45 per night for two, \$55 per night for four. Phone Hazel Smith at 686-8114. (Retired from Math.)

**DAILY INFORMATION** - Deadline is 12-noon of the working day prior to publication on Mondays, Wednesdays, and Thursdays. Include name, department, and extension. Submissions must be made in writing or E-Mail. All items will be published at least once and more often if space permits.



# The Daily

Edited by Joan Aschim

Published for the staff of Lane Community College

747-4501, ext. 2591

Wednesday, January 15, 1992

Week Two of Winter Term

## TODAY:

- Instructional Cabinet meets at 1:30 p.m. in ADM 216.
- Curriculum Idea Forum meets at 3:15 p.m. in ADM 216.
- Classified Council meets at 3 p.m. in PE 205. They will discuss the council's process for making and submitting recommendations; meeting attendance by classified staff outside of work-related requirements; and reclassification.
- John Winqvist discusses technical training opportunities at 4:15 p.m. in CEN 219.
- The LCC Chapter of AAWCJC meets from 4:30-5:30 p.m. in PE 231.
- Women's and men's basketball teams play Umpqua here at 6 p.m. and 8 p.m.

**STUDENTS SPONSOR MARTIN LUTHER KING EVENTS** - ASLCC invites staff to the following Martin Luther King events sponsored in part by Lane students:

- Friday, Jan. 17, poet and writer Nikki Giovanni will read from her work at 9 a.m. and 10 a.m. in the Blue Door Theater.
- Sunday, Jan. 19, comedian Bertice Berry will perform at 7 p.m. in the Hult Center.
- Monday, Jan. 20, "The Dream Lives On Jubilee" will begin at 7:30 p.m. in the Hult Center. The Bethel Temple Gospel Choir will sing and the Rev. Fred Shuttlesworth will speak.
- Tuesday, Jan. 21, Nolan Butler and Maya Thomas will perform song and dance at 2 p.m. at the Blue Door Theater. Thomas also will do a monologue.
- Wednesday, Jan. 22, the musical group Inspirational Sounds will perform at 12-noon in the cafeteria; and storyteller Paulette Ansari will perform at 2 p.m. in the Blue Door Theater.
- Friday, Jan. 24, the Sojourner Truth Theatre of Portland will perform at 12-noon in the cafeteria; and at 2 p.m. in Forum Building, Room 308.
- All events are free but tickets are needed to get a seat at the Hult Center and are available at the Hult, 687-5000; or at the Performing Arts Box Office, ext. 2202. ASLCC can be reached at ext. 2330.

**ESSIG RETURNS** - "Life's Too Short Not to Work Together," is the topic for Don Essig's presentation on Martin Luther King Day from 3-5 p.m. in FOR 308-309. Dr. Essig conducts leadership seminars and has been the "Voice of the Ducks" announcer for U.O. football and basketball games since 1967. He presented a well-attended seminar on personal excellence for classified and management staff in October. - Julie Baker, ext. 2544

**SAVOIE SHARES EXPERTISE WITH OVEN-MAKERS** - Don Savoie, culinary instructor, will conduct a catering seminar on Jan. 30 in Ontario, Calif, for 60 to 80 employees of Blodgett's Magic Kitchens Division. Blodgett is the oldest oven company in the United States.

**TIMBER FORUM SETS EXAMPLE** - "LCC Conducts a Community Forum: A Case Study," was presented by English and Social Science Instructor Jerome Garger in Costa Mesa, Calif., on Dec. 13 at a League for Innovation conference attended by representatives from 10 community colleges nationwide.

The League is funding similar community forums across the country with a \$185,000 grant from the Hitachi Foundation. LCC plans to use its \$5,000 League grant to partially fund a forum on finding common ground in the timber crisis in April--a follow-up to the "Striving for Unity" forum held in Dec., 1990. If you have any suggestions for the upcoming forum, contact Garger at exts. 2162 or 2419.

**WOMEN'S DAY APPROACHES** - "Women's Day at Lane" will be held Saturday, January 25, at main campus. Reservations should be made through the Women's Program at ext. 2353 by Monday, January 20.

Participants may tour any two of 25 participating instructional programs and attend sessions on financial aid, career planning, job trends, and study skills. Lunch is provided. Child care is free. Spanish and American Sign Language interpretation are available.

**BUTTONS NEEDED** - The Women's Program asks staff with Ask Me buttons to loan them for use at Women's Day on Jan. 25. Program staff will pick-up and return the buttons. Please call Jill Bradley at ext. 2352 if you can help.



**SUMMER JOBS AVAILABLE** - Employers with summer seasonal jobs in resorts, parks, summer camps, etc., are recruiting now through the Job Placement Office. Please encourage students seeking summer work to contact the JPO, Forum 302, ext. 2217, for applications or additional information.

**INTERVIEW WORKSHOPS OFFERED** - The Job Placement Office is offering videotaped practice interview sessions winter and spring. Instructors who would like their students to participate as a part of their class assignments should call Cheryl Alonso, ext. 2579, or Joan Adams, ext. 2326.

**NOTICE TO COMMITTEE CHAIRS** - If you are a chair of an LCC college-wide committee, task force, or council, and you didn't receive a committee information sheet to fill out, please contact Sally Sparkman, President's Office, ext. 2304.

**GRANT WRITING SEMINAR OFFERED** - A three-day grant writing seminar will be held at Mt. Hood Community College February 24-26. Sponsor is the Grantsmanship Center, the oldest and largest grantsmanship training organization for nonprofits. Designed for both the novice and experienced grant seeker, this hands-on workshop covers an overview of funding sources and reference materials and provides practice in both writing and reviewing proposals. Registration is \$395. For more information, call Marcia Truman of the Center for Community and Economic Development at 667-7428. - Julie Baker, ext. 2544

**TEACHING CONFERENCE ACCEPTING PROPOSALS** - The NISOD International Conference on Teaching Excellence will be held May 24-27 in Austin, Texas. Presentation proposals are must be received by the National Institute for Staff and Organizational Development in Austin by Jan. 31. For a proposal application, contact Larry Warford in Community and Economic Development branch at ext. 2302.

**FELLOWSHIP AVAILABLE** - The American Association of University Women is accepting applications for a \$2,000 fellowship for women. Applicants must have lived in Oregon the past five years, have a bachelor's degree, and have at least two years of paid or volunteer employment. The grant may be used for master's or doctoral work in the U.S. or abroad. Age and field of study are unrestricted. For an application, write to the Oregon Division Fellowship Committee, P.O. Box 238, McMinnville, Ore., 97218 by Jan. 31. Applications are due Feb. 28. The recipient will be notified by March 27. For more information, contact Julie Baker at ext. 2544.

**ACTIVITIES GUIDELINES AVAILABLE** - Professional activities guidelines and application forms are available from Study Skills. Contact Roxanne Flowerday or Pat John at ext. 2439. The new forms are blue. Please recycle the old forms. Committee members are Doris Burkland, Study Skills; Willie Kealoha, Industrial Technology Programs, Joan Ryan, Business, Lynne Swift, Training and Development, Beth Webb, Family & Health Careers, and Pat John, Study Skills, committee chair. Deadline dates for applications are: Jan. 31, Feb. 28, Mar. 30, May 1, and May 29.

**INEXPENSIVE AUTO REPAIRS AVAILABLE** - The automotive technology program seeks autos in need of repairs to transmissions, differentials, clutches, air conditioning, and four-wheel drive components for winter term projects. Labor is free and performed by students under supervision. For an appointment call ext. 2388.

**GOLF TOURNEY IS TOMORROW** - The LCC Chapter of AAWCJC is holding its first annual miniature golf tournament on Thursday, Jan. 16, at 5:30 p.m., at Putt-n-Video, 1300 Mohawk Blvd., Springfield. Fee is \$2.25. A no-host pizza party will follow. Please RSVP to Rosemary Busby at ext. 2925, or Julie Baker at ext. 2544.

- ADS -

**MAGAZINES WANTED:** English as a Second Language needs donations of Life magazines. Contact Jan Lyon at ext. 2253 if you can help.

**FOR RENT:** QUIET, furnished 1-bedroom apartment, no smokers or pets, new paint and carpets. 1456 Pearl. \$395/mo. Clarice Bates, F&HC, call 345-3126 or 344-6592.

**FOR SALE:** COOKBOOKS by the great cooks of the Central Lutheran Church. Loose leaf, hard notebook cover. \$12 each. Clarice Bates, F&HC, call 345-3126.

**FOR RENT:** LARGE 1-bedroom apartment on College Hill, available now. Call Jay Marston, Science, x2446, or 485-4516.

**NEEDED:** ELECTRIC bark or training collar for my dogs. Do you have one I could borrow or buy cheap? Holly Graham, KLCC, x2171.

**FOR SALE:** KENMORE Ultra Stitch 12 sewing machine. Hardly used, will sell for \$175. Call mornings, 933-2054. Don Cronin, Campus Services.

**DAILY INFORMATION** - Deadline is 12-noon of the working day prior to publication on Mondays, Wednesdays, and Thursdays. Include name, department, and extension. Submissions must be made in writing or E-Mail. All items will be published at least once and more often if space permits.



# The Daily

Edited by Joan Aschim

Published for the staff of Lane Community College

747-4501, ext. 2591

Thursday, January 16, 1992

Week Two of Winter Term

## TODAY:

- AAWCJC miniature golf tournament, 5:30 p.m., Putt-n-Video, 1300 Mohawk Blvd., Springfield.
- Multicultural Center Social Hour, 1:30-3 p.m., Center 409.

**REMEMBER TO BRING YOUR LUNCH** - To allow all staff the opportunity to attend special Martin Luther King Day activities on Monday, Jan. 20, the cafeteria will not be open. The college is closed to the public and no classes will be held.

**UNION PRESIDENT ENCOURAGES ATTENDANCE AT MLK** - LCCEF President Jerry Sirois encourages classified staff to attend Martin Luther King Day work sessions. He believes the day provides a unique and important opportunity for personal and professional growth. "After all," he says, "the topic is diversity, collaboration, and communication."

**COUNCIL SUGGESTS CALENDAR CHANGE** - College Council on Wednesday instructed Bob Marshall to propose to the classified and faculty unions trading President's Day for Martin Luther King Day in 1992-93, rather than having both days as holidays. Currently, college staff get Presidents' Day as a holiday and work on Martin Luther King Day. Faculty are concerned about having an additional holiday in an already-short winter term. If the unions do not accept the proposal by the Feb. 4 college council meeting, the current calendar will be recommended to the Board of Education.

In other business, council reviewed a construction priorities list compiled by the Facilities Management Committee. Members recommended to committee facilitator Paul Colvin that the list be shared around campus, including an explanation of how priorities were arrived at. They also suggested that the list be retitled to reflect that it includes remodeling, repairs and improvements as well as new construction.

Council heard an update on the smoking issue. Dick Hillier currently is carrying out Board of Education instructions to investigate the cost of providing separately-ventilated smoking areas around campus. Larry Warford suggested limiting the query to existing smoking areas. Hillier will share his findings with Council at its Feb. 4 meeting.

The scheduling of faculty in-service days for 1992-93 was returned to the Faculty Professional Development Team. Larry Warford will ask the team to submit a recommendation to council.

President Moskus proposed sharing his presentation time on Martin Luther King day with others who had something to say about shared decision-making. Council supported the idea and suggested that members of the original shared decision-making task force be invited to speak.

Council approved changes to the philosophy statement of the revised Shared Decision-Making Task Force Report. Discussion about the implementation process will be continued at the next meeting.

Board policy handbook revisions and a review of the Jan. 8 board meeting did not make it into discussion before Council adjourned at 5:30 p.m. Council meets again next week, Tuesday, Jan. 28, 3-5 p.m., in the Board Room.

**WHERE TO FIND DONNA ALBRO** - The college's new affirmative action director will be working in John Winkquist's office in Counseling, IND 208, ext. 2870, while Winkquist is on professional leave.

Albro was introduced to College Council at its Wednesday meeting. She agreed with President Moskus' statement that her first order of business will be to update the college's affirmative action plan written in 1978. Council responded favorably to Albro's suggestion that she hold workshops to explain to staff what the update will entail.

**MEDIATION DATE SET** - Negotiators for the college and classified union will meet in mediation on Feb. 5 with mediator Nancy Brown. If mediation provides no movement, fact-finding will be pursued, said LCCEF President Jerry Sirois on Wednesday. William Dorsey has been selected as fact-finder.



**KREMERS TO DISCUSS SIBERIA** - Political Science Instructor Joe Kremers will show slides and talk about his recent trip to Siberia, on Wednesday, Jan. 22, from 2-3:30 p.m., in the Board Room, ADM 216. Interested staff invited.

**MANAGERS DRAFTING PROPOSAL** - The Management Steering Committee for 1991-92 has begun to review the annual managers' working conditions agreement for 1992-93. Committee Chair Ted Kotsakis says the group hopes to present the proposal to the president by mid-March and have an agreement by June. Also serving on the committee: Steve Barton, James Cagney, Joyce Kofford, Marie Matsen, Germaine Mock, Anita Overton, Lloyd Rain, and Naomi Soules.

**ENDOWMENT ESTABLISHED** - The LCC Foundation has been working with Bryce Thalman to establish the guidelines for an endowed scholarship in memory of his wife, Phyllis Thalman. Mrs. Thalman died in April of 1991 of Alzheimer's disease. Mr. Thalman is establishing a \$10,000 endowment to provide a \$500 annual scholarship to students of need and merit majoring in the nursing program. Students must have received their CNA with a goal of attaining the LPN and/or RN certificate and have a desire to work with patients suffering from Alzheimer's or some form of dementia.

**LOCKING CABINET NEEDED** - The Technology Access for Life Needs Center is in need of a locking cabinet for a computer work station. Please call Carol Burns at ext. 2149 if you know of any possibilities for loan or sale.

**H-P PRODUCT PRICES AVAILABLE** - Purchasing Services has received the latest pricing on all Hewlett-Packard products available to students and staff on a personal basis, and to the college as an educational institution. For a copy of the price lists, call Purchasing at ext. 2208.

**GET YOUR NOMINATIONS IN** - Nomination forms for Outstanding Classified Employee of the Month for February are due Monday, Jan. 20th, to the Office of Community and Economic Development, ADM 205. If you need a form, contact Debbie Powers at ext. 2120.

The Outstanding Classified Employee of the Month Award was recommended by the Classified Professional Development Team to better recognize the contributions of classified staff. February is the first month of the new award.

**OSPIRG KICKS OFF WINTER PROGRAM** - The LCC chapter of the Oregon Student Public Interest Research Group will hold a general interest meeting and open house on Wednesday, Jan. 22, at 1 p.m. in Forum 307. OSPIRG will launch its winter projects which range from safe drinking water to environmental education, to hunger and homelessness. Refreshments and entertainment will be provided, and all are welcome to attend.

**LCC AND SACRED HEART PARTNERSHIP FEATURED IN NEWSLETTER** - A recent publication of Sacred Heart General Hospital is filled with news about LCC students, staff, and programs. Many LCC health career students gain valuable field experience at the hospital, and the hospital hires many LCC graduates, says the newsletter. Student Terri Norris and nursing instructor Julia Munkvold are featured, and nursing instructor Suzanne Canale is quoted. For a copy of the article, contact The Daily at ext. 2591 or Doug White at ext. 2617.

**WORK ABROAD MEETING SET** - An information meeting about summer work in Great Britain will be held Thursday, Jan. 23, from 2-3 p.m., in Center 446. For more information, contact Valerie Reed at ext. 2862; Peggy Marston at ext. 2423; or Dave Sherman at ext. 2143.

**STAFF DIRECTORY CHANGE** - Change the home telephone number to 485-5223 for Joan Aschim, Institutional Advancement, on page 26 of the staff directory.

- ADS -

**WANTED:** Large pet carrier needed before Jan. 24. If you have one, please call 746-5090 or ext. 2207. Cherrill Hemminger, Admissions.

**VOLUNTEERS NEEDED** for Womenspace auction on Sunday, April 12, and/or between now and then to prepare for it. A variety of fun tasks to choose from is available. Call Sue Thompson, H&PE, x2552 or x2454, or 689-4487.

**MAKE THE LEAP** for Womenspace! 13th Annual Lap-A-Thon is Saturday, Feb. 29. Swim, walk, run, or be a sponsor. Sue Thompson is running and Kay Gidley is swimming. Registration forms and sponsor sheets are available at the PE office from Sue Thompson, x2552 or x2545; or 689-4487. Thanks!

**MAGAZINES WANTED:** English as a Second Language needs donations of Life magazines. Contact Jan Lyon at ext. 2253 if you can help.

**FOR RENT:** QUIET, furnished 1-bedroom apartment, no smokers or pets, new paint and carpets. 1456 Pearl. \$395/mo. Clarice Bates, F&HC, call 345-3126 or 344-6592.

**DAILY INFORMATION** - Deadline is 12-noon of the working day prior to publication on Mondays, Wednesdays, and Thursdays. Include name, department, and extension. Submissions must be made in writing or E-Mail. All items will be published at least once and more often if space permits.



# The Daily

Edited by Joan Aschim

Published for the staff of Lane Community College

747-4501, ext. 2591

**Tuesday, January 21, 1992**

**Week Three of Winter Term**

**MARTIN LUTHER KING ACTIVITIES CONTINUE** - Today, Nolan Butler and Maya Thomas perform song and dance at 2 p.m. in the Blue Door Theater on main campus. Thomas also will do a monologue.

**WORLD BANK SENDS CUTLER TO RUSSIA** - Dr. Edward "Sandy" Cutler, state director of the Oregon Small Business Development Center Network headquartered at Lane, has been asked by the World Bank to go to Moscow, Russia, on an economic development mission. The purpose of the trip is to help the Russian government establish programs to move toward a market-driven economy. Sandy will be in Moscow from Jan. 27 to Feb. 7.

**KREMERS TO DISCUSS SIBERIA** - Political Science Instructor Joe Kremers will show slides and talk about his recent trip to Siberia, on Wednesday, Jan. 22, from 2-3:30 p.m., in the Board Room, ADM 216. Guests welcome.

**MINISTRY NO LONGER RECYCLING** - "Paper recycling at LCC has grown beyond the ability of Campus Ministry to maintain," says Director/Chaplain Jim Dieringer. "In early December I contacted the administration and told them I would have to turn the recycling program over to them at the beginning of winter term. As of Tuesday, Jan. 21, I will no longer be doing the paper recycling. Paper recycling is a very intensive endeavor, working 35 hours a week for nine-and-one-half months. In 1991 we earned \$1,301.81 from the almost 39 tons of paper that we collected, sorted and delivered to Weyerhaeuser.

"I want to thank all the people here at Lane who helped make this program so successful that it has outgrown my ability to keep up." - Jim Dieringer, Campus Ministry, ext. 2580.

At its Jan. 10 meeting, the LCC Board of Education awarded a recycling contract to the sole bidder for the job, Weyerhaeuser Paper Company.

**CLASSIFIED COUNCIL HEARS THAT JOB QUESTIONNAIRE IS TIME-CONSUMING** - A job questionnaire issued to all classified staff is taking longer to complete than the two to six hours anticipated by Personnel, members of Classified Council learned at their Jan. 15 meeting. In addition, some managers have asked classified staff to submit the questionnaire sooner than the Jan. 31 deadline set by Personnel. Management supervisors also have to complete part of the questionnaire, and have been assigned a Feb. 28 deadline. The questionnaire is part of a reclassification study. Council decided to notify the president and the director of Personnel of these concerns. It was felt that if more hours are allowed to work on the form between now and Jan. 31, the deadline can be met, but an earlier deadline should not be requested.

Classified also began reviewing models of a decision-making process for itself and will continue that discussion at the next meeting. In other business, union reps said that mediation has been set for Feb. 5, and a fact-finder has been selected should that process become necessary. Attendance at Martin Luther King Day was encouraged since it is a work day of professional development opportunity. Declining to volunteer at non-paid events until a contract settlement is reached is reasonable, union leaders said.

**FINAL CLASSIFICATION WORKSHOP SET** - The third and final session of the classification workshop has been rescheduled for Wednesday, Jan. 22, 2:30-4 p.m., DTC 302. Any classified and management employees may attend. A video of the Dec. 4 workshop is available in the Library in the reserve tray under "LCC-Classification," and copies of the workshop overhead slides are available from Personnel.

**LIBRARY REPORTS HEAVY USE** - Attendance in the Library fall term averaged 8,189 people per week. During the first week of winter term, exactly 9,000 people passed through the Library's exit gate, an average of 1,774 per day. Second week figures were even higher at 1,918 per day.

**FACULTY LEADERS TO MEET** - Faculty Council will meet Jan. 23 from 3-4:30 p.m. in ADM 216. They will discuss committee structure at Lane and hear reports from other councils and cabinets.



**JOB WORKSHOP AVAILABLE** - Resumes, cover letters and job search strategies will be reviewed in a workshop on Wed., Jan 22, from 4-6 p.m., in Forum 310. Call the Job Placement Office for an appointment; ask for Diane Morrow at ext. 2164 or Shirley Perry at ext. 2859.

**STAFF DIRECTORY CHANGE** - Velma Jesser can be reached at extension 2018 in BU 207C; please note these changes on pages 7 and 51 of the staff directory.

**DENTAL INSURANCE REMINDER** - The maximum amount of dental benefits for eligible classified and management staff is \$1,000, and for faculty is \$1,500, for covered services for each person covered per benefit year. If you have questions regarding your benefit year, you may call your insurance carrier (Blue Cross/Blue Shield or OEA Choice). For answers to any questions regarding insurance, contact Marie Nelson in Personnel Services at ext. 2590.

**HEALTHY COMPUTING BOOK AVAILABLE** - The book Healthy Computing: Risks and Remedies Every Computer-User Needs to Know, is available at the main campus library. The book is an easy reading 146-page paperback by Ronald Harwin and Colin Haynes published in 1992 by the American Management Association. It covers causes of and solutions to carpal tunnel syndrome and tendonitis, headache, noise in the ears, head-neck-back problems, stress disorders, sight deterioration, mental health, pregnancy complications, and more.

**HUMANITIES GRANTS AVAILABLE** - In March, 1992, the Oregon Committee for the Humanities will award up to seven individual research grants of \$3,000 each to support a sustained period of research (normally at least six weeks) by Oregon scholars. The purpose of these awards is to encourage scholarly inquiry that will make significant contributions to the humanities and be adaptable to a broad public discourse in ideas. Applications must be postmarked Jan. 31. If you're interested, contact Susan Dunne, OCH liaison, in English, Foreign Language & Speech, at ext. 2140.

**FUND-RAISING TELECONFERENCE IS COMING TO LCC** - The LCC Foundation is co-sponsoring "Community Crossroads: Fund-Raising Today for the 21st Century," on Tuesday, Feb. 4, 10 a.m. to 1 p.m., in ADM 216. Topics include planning and evaluation, business partnerships, and capital campaigns. Registration fee is \$35. For information, contact the Foundation at ext. 2226.

- ADS -

**RECYCLE UNWANTED JEWELRY:** Have you wondered what to do with that old necklace or earrings that you haven't worn in years? I love to create new things out of old. I would welcome any donations of unwanted costume jewelry to feed my hobby and passion. Please recycle to Ellice Leichter, T&D, ext. 2229.

**FOR SALE:** 1979 Tornado, front-wheel drive, great shape, loaded (leather interior, etc.), converted from diesel to gasoline about 24,000 miles ago. \$2,000. Ron Van Scoyoc, DTC/Counseling, ext. 2979, or 997-7580.

**LOST:** silver-colored two-inch wide hinged bangle bracelet inlaid with black wood and bone. Not valuable, but of great sentimental value. Reward for return. Lost on Wednesday, Dec. 11, at the LCCF "soup line" between the theater parking lot and the cafeteria, main campus. Jo Stejskal, Campus Services, ext. 2567.

**INEXPENSIVE AUTO REPAIRS AVAILABLE:** The automotive technology program seeks autos in need of repairs to transmissions, differentials, clutches, air conditioning, and four-wheel drive components for winter term projects. Labor is provided free and performed by students under supervision. For an appointment call ext. 2388.

**WANTED:** Large pet carrier needed before Jan. 24. If you have one, please call 746-5090 or ext. 2207. Cherrill Hemminger, Admissions.

**VOLUNTEERS NEEDED** for Womenspace auction on Sunday, April 12, and/or between now and then to prepare for it. A variety of fun tasks to choose from is available. Call Sue Thompson, H&PE, x2552 or x2454, or 689-4487.

**MAKE THE LEAP** for Womenspace! 13th Annual Lap-A-Thon is Saturday, Feb. 29. Swim, walk, run, or be a sponsor. Sue Thompson is running and Kay Gidley is swimming. Registration forms and sponsor sheets are available at the PE office from Sue Thompson, x2552 or x2545; or 689-4487. Thanks!

**FOR SALE:** COOKBOOKS by the great cooks of the Central Lutheran Church. Loose leaf, hard notebook cover. \$12 each. Clarice Bates, F&HC, call 345-3126.

**FOR RENT:** LARGE 1-bedroom apartment on College Hill, available now. Call Jay Marston, Science, x2446, or 485-4516.

**NEEDED:** ELECTRIC bark or training collar for my dogs. Do you have one I could borrow or buy cheap? Holly Graham, KLCC, x2171.

**FOR SALE:** KENMORE Ultra Stitch 12 sewing machine. Hardly used, will sell for \$175. Call mornings, 933-2054. Don Cronin, Campus Services.

**WANTED:** FEMALE BADMINTON player(s) during intramurals times, MWF 12-1 p.m. Great exercise and fun! Beginner to intermediate levels. Contact Gloria Jarvis, Fin. Svcs., x2604, if interested.

**FOR RENT:** MT. BACHELOR VILLAGE condo, fully furnished, one bed plus Murphy bed in living room, with fireplace, \$45 per night for two, \$55 per night for four. Phone Hazel Smith at 686-8114. (Retired from Math.)

**FOR SALE:** 19-INCH COLOR TV "Supremacy" brand made by RCA for Macy's. Works fine. Mother-in-law thought we needed a new one. \$80. Kris Fox, KLCC, x2484.

**DAILY INFORMATION** - Deadline is 12-noon of the working day prior to publication on Mondays, Wednesdays, and Thursdays. Include name, department, and extension. Submissions must be made in writing or E-Mail. All items will be published at least once and more often if space permits.



# The Daily

Edited by Joan Aschim

Published for the staff of Lane Community College

747-4501, ext. 2591

**Wednesday, January 22, 1992**

**Week Three of Winter Term**

**TODAY:**

- Classification workshop, 2:30-4 p.m., DTC 302.
- OSPIRG will hold a general interest meeting and open house at 1 p.m. in Forum 307. Anyone interested may attend.
- Political Science Instructor Joe Kremers will show slides and talk about his recent trip to Siberia from 2-3:30 p.m. in ADM 216.
- Inspirational Sounds will perform at 12-noon in the cafeteria and storyteller Paulette Ansari will perform at 2 p.m. in the Blue Door Theater. as part of the student-sponsored Martin Luther King celebration.
- Artist Ken Paul lectures on his work in the Art Dept. Gallery at 1 p.m.

**FACILITIES COMMITTEE TO MEET** - The Facilities Management Committee will meet Thursday, Jan. 23, at 3 p.m. in the Board Room. Topics on the agenda include Cottage Grove facilities needs, Performing Arts Practice Room change of use, Center 452 partition, and the construction/remodeling priority list.

**COUNSELING HAS IN-SERVICE** - Counseling Department full-time staff will be off campus for in-service on Friday, Jan. 24. Part-time staff will be available in the Counseling center. The Career Information Center will be open from 9 a.m. to 5 p.m., and Testing will be closed.

**EL SALVADOR IS TOPIC OF PRESENTATION** - Patsy Raney and Foncy Prescott will discuss "El Salvador's Cease Fire: From Death Squads to Democracy?" in Jerome Garger's Peace & Conflict Studies class on Friday, Jan. 24, from 1-1:50 a.m., in Center 401. The two recently returned from a fact-finding delegation to El Salvador.

**WELLNESS COMMITTEE TO MEET** - The Wellness Committee will meet Wednesday, Jan. 29, from 2-3 p.m. in PE 205. All members are urged to attend to make important decisions regarding actions of the group during 1991-92. The group also seeks additional members and officers. For more information, call Judith Gabriel at ext. 2699 or Charlotte Brown at ext. 2181.

**FOUNDATION REPORTS GOOD YEAR** - The LCC Foundation has receipted \$454,184 in the first six months of 1991-92, reports director Joe Farmer. He says if the trend continues, it will be a record year. The total comes from \$72,834 in cash, \$250,450 in gifts of materials and equipment, and \$130,900 in gifts of real estate.

Highlights of December contributions include \$142,687 of material and equipment from Eugene Welders for the welding program; the sale of two condominiums worth \$130,900 from an anonymous donor for scholarships; \$10,000 from Sacred Heart to purchase a ventilator for the respiratory care program; establishment of the Phyllis Thalman Memorial Scholarship Endowment for the nursing program; and \$4,675 for the Evelyn Tennis Memorial Scholarship for the dislocated worker program.

Farmer is assisted by Roberta Opdenweyer and a 25-member board of trustees led by president Ed Anderson.

**AMERICANS WITH DISABILITIES ACT EXPLAINED IN TELECONFERENCE** - The impact of the Americans with Disabilities Act (ADA) on the concerns of architects, builders, building code officials and others will be explained in a videoconference series, "Opening All Doors: Understanding the Americans With Disabilities Act." Three sessions will be held: an introduction to the content and intent of the law will be Thursday, Feb. 6, in FOR 308; exterior and interior architectural design and compliance strategies on Wednesday, March 18 in ADM 216; and integration of the ADA with local code enforcement programs on Tuesday, April 21, in FOR 308; each from 10 a.m. to 2 p.m. ADA laws become effective Jan. 26 of this year.

The series is cosponsored by LCC Telecourses and the Southwestern Oregon Chapter of the American Institute of Architects. Sponsors recommend that participants sign up for all three sessions if possible. The series fee is \$225 per person; or \$195 per person for AIA and endorsing organization members. Single sessions are \$95 per person; or \$85 for members of AIA and endorsing organizations. Students may attend the series for \$60, or \$25 per session. For more information, call Cynde Leathers at ext. 2260.





*Luci Edminster*  
*Cooperative Education*

**MEET LUCI EDMINSTER** - Luci Edminster returned to LCC on Jan. 6 as a job developer for the Cooperative Education program. She formerly worked as an employment specialist in Lane's Dislocated Worker Program for a few months in 1986. In her new position, she will develop a pool of employers providing short and long-term training positions for Cooperative Work Experience students. Her efforts will include personal visits, speaking engagements, employer tours, and employer recognition. She will also help assess the skills and attributes of individual students.

Edminster has several years experience in community relations, job development, and marketing, including a four-year stint as career development manager at Trend College. She has studied at the U.O. and has an associate degree in early childhood education from Los Angeles Valley College at Van Nuys. She also has operated a seminar business specializing in telephone etiquette training.

Edminster can be reached at ext. 2024 in APR 205A.

**SEAFOOD ON RENAISSANCE MENU NEXT WEEK** - The Renaissance Room, Lane's student-run gourmet restaurant, serves lunch on Wednesdays and Thursdays this term. On the menu Jan. 19 and 30 is sunset glow mocktail, house salad, Oregon clam chowder, fillet of sole mornay, beef and vegetables kabob, and poppyseed raspberry torte. For reservations, call ext. 2697 from 9 a.m. to 2 p.m. Monday through Thursday.

**AN EVENING OF SHORT PLAYS STARTS FRIDAY** - Three series of short plays representing student production work will be held Jan. 24, 25, 31 and Feb. 1 in Performing Arts Blue Door Theater at 8 p.m. each night. The plays often are avant-garde and for adult audiences. Tickets are \$4 and available at the Box Office, ext. 2202.

**SEXUAL ORIENTATION OF STUDENTS FOCUS OF TELECONFERENCE** - "Understanding and Meeting the Needs of Gay, Lesbian, and Bisexual Students," is the topic of a teleconference to be held Thursday, Feb. 6, from 8 a.m. to 3:30 p.m., at Chemeketa Community College in Salem. Registration is required by Jan. 30. A nationwide panel of educators and human resource specialists will speak. For more information, call Telecourses at ext. 2260 or the Daily at ext. 2591.

**CONFERENCES TO CONSIDER** - For more information about these and other workshops, contact Julie Baker at ext. 2544.

- The Mechanics of Consulting, Eugene, Feb. 1, \$69.
- How to Handle Difficult People, Eugene, Feb. 3, \$69.
- How to Manage Conflict, Criticism, and Anger, Eugene, Feb. 5, \$115.
- Best of America Human Resources Conference & Expo, Florida, Feb. 9-13, Expo Feb 10-12, \$900.
- Law and Higher Education: Issues in 1992, Feb. 10-12, Florida, \$275.
- PC Shortcuts That Will Help You Work Faster, Eugene, Feb. 10, \$125.
- Lifelong Learning: Meeting the Higher Education Needs of Adult Learners, Feb. 12-14, San Diego, \$250.
- Developing and Implementing Multicultural Curriculum, San Diego, Feb. 10-11, \$195.
- Co-Dependency in the Workplace, Sacred Heart, Eugene, Feb. 11, free.
- Managing Diversity in the University/College Workplace, Feb. 13-14, San Diego, \$195.
- Building Budgeting Skills, Eugene, Feb. 14, \$149.
- Multicultural Treasures: Capital for Tomorrow, Clackamas, Feb. 14-15, no cost cited.

- ADS -

**MEDITERRANEAN STUDY TOUR:** Late July, 1992. Join Kathy Hoy, Lorna Funnell, Emily Rasmussen, Wanda Beckner, and others in a 17-day journey Spain, France, Italy, and Greece. Only \$2,504 inclusive, plus flight tax, own beverages, lunches, optional side tours and optional insurance. Pay in full or go free by signing up 12 paid friends, or save 50% by splitting the 12 with a friend, by Mar. 13 guarantee price deadline. Please call Lorna Funnell or Kathy Hoy at 343-7819 for application materials and instructions about a pre-trip meeting on Tuesday, Feb. 11, from 7-9 p.m. Lorna Funnell, x2906, Cont. Ed.

**RECYCLE UNWANTED JEWELRY:** Have you wondered what to do with that old necklace or earrings that you haven't worn in years? I love to create new things out of old. I would welcome any donations of unwanted costume jewelry to feed my hobby and passion. Please recycle to Ellice Leichter, T&D, ext. 2229.

**FOR SALE:** 1979 Tornado, front-wheel drive, great shape, loaded (leather interior, etc.), converted from diesel to gasoline about 24,000 miles ago. \$2,000. Ron Van Scoyoc, DTC/Counseling, ext. 2979, or 997-7580.

**LOST:** silver-colored two-inch wide hinged bangle bracelet inlaid with black wood and bone. Not valuable, but of great sentimental value. Reward for return. Lost on Wednesday, Dec. 11, at the LCCEF "soup line" between the theater parking lot and the cafeteria, main campus. Jo Stejskal, Campus Services, ext. 2567.

**DAILY INFORMATION** - Deadline is 12-noon of the working day prior to publication on Mondays, Wednesdays, and Thursdays. Include name, department, and extension. Submissions must be made in writing or E-Mail. All items will be published at least once and more often if space permits.



# The Daily

Edited by Joan Aschim

Published for the staff of Lane Community College

747-4501, ext. 2591

Thursday, January 23, 1992

Week Three of Winter Term

## TODAY

- Facilities Management Committee meets at 3 p.m. in the Board Room.
- Faculty Council meets at 3 p.m. in PE 205.

**DEADLINES APPROACHES** - A reminder to classified employees: If you attended a classification training session in December, the deadline for completing your job description questionnaire and forwarding it to your management supervisor is Jan. 31. If you attended a training session in January, you have until Feb. 28 to complete the questionnaire. Questions about these deadlines? Contact Judy Ward at ext. 2583 in Personnel Services.

**REMINDER TO SUPERVISORS** - Supervisors should not be asking employees to complete their job description questionnaires earlier than the published deadline dates. In fact, some employees may need more than six hours of release time to complete the survey according to our timelines. Please try to give employees adequate release time in the Library or another quiet location to do a thorough job of filling out the questionnaire. Try to do the same for yourself when the time comes for you to review the completed form. - Personnel Services

**HELP IS AVAILABLE** - Need help putting your thoughts into words on the job description questionnaire? Personnel Services can help put you in touch with an on-campus writing tutor who can help. Contact Judy Ward at ext. 2583. There is no charge for this service.

**PRESIDENT HAS TIME FOR DROP-IN VISITORS MONDAY** - President Moskus will meet with drop-in visitors on Monday, Jan. 27, from 1-5 p.m. Visitors will need to wait in turn, and are asked to take no more than 15 minutes so that everyone can be seen. Groups of up to six people are welcome. The next afternoon to see the president without an appointment will be Feb. 3.

**EL SALVADOR IS TOPIC OF FRIDAY PRESENTATION** - Patsy Raney and Foncy Prescott will discuss "El Salvador's Cease Fire: From Death Squads to Democracy?" in Jerome Garger's Peace & Conflict Studies class on Friday, Jan. 24, from 1-1:50 a.m., in Center 401. The two recently returned from a fact-finding delegation to El Salvador.

**WOMEN'S DAY IS SATURDAY** - Women's Day At Lane will be held Saturday, Jan. 25, from 8:30 a.m. to 4 p.m. The free event offers women the opportunity to explore new work and career options. The event is sponsored by the Women's Program; call ext. 2353 for more information.

**DUPLICATION TEAM TO MEET** - The Duplication Team for Computer Support will meet Monday, Jan. 27, at 3 p.m. in the Board Room. Guests are welcome.

**ECONOMIC INDICATORS** - A couple of items of interest to educators from the City of Eugene Business Assistance Team newsletter:

Eugene ranked nationally in the top 15 percent of 247 school districts rated on the quality of their educational systems. (Expansion Magazine, Sept./Oct. 1991)

The educational wage differential widened in the 1980s. The rate of those returning to school increased by almost 50 percent in the 1980s. Wages of experienced workers and those with higher education levels increased relative to the wages of inexperienced workers with less education. Increases in manufactured imports affected the unskilled worker more than the skilled worker. Product demand seems to have shifted from manufacturing industries employing persons with less education, to services employing the college educated. Higher educated workers have done well and returns to college have gone up sharply. (Federal Reserve Board Weekly Letter, Nov. 22, 1991).

**FILING DEADLINE ARRIVES** - The deadline to file for seats representing Zones 1 and 4 on the LCC Board of Education is today. The election is March 24. Candidates must file in person with the Lane County Elections Office, 135 E. 6th Avenue, Eugene.



**BLACK HISTORY MONTH CELEBRATED ON RADIO** - February is Black History Month. KLCC/KLCO's Live Wire, Sunday Brunch and Northwest Passage programs will focus on relevant issues throughout the month.

Live Wire host Alan Siporin has scheduled the following topics for his Tuesday/Wednesday talk show at 6:30 p.m.: Feb. 4, Africa and economic ramifications of the slave trade and Europe; Feb. 5, black women; Feb. 12, blacks in film; Feb. 18, African origins of civilization; Feb. 19, Jewish and black alliances and conflicts; and Feb. 25, class or race.

Chris Clouart will host a three-hour special Sunday Brunch at 12-noon on Feb. 2. A panel of local participants will discuss the global phenomenon of white supremacy and how it's viewed by people of color.

**IN SYMPATHY** - Diane Dann's mother died of cancer Tuesday. A contribution to the American Cancer Society will be made in her mother's name. If you would like to contribute, contact Larry Romine at ext. 2303 or Julie Aspinwall-Lamberts at ext. 2576 by Friday, Jan. 31. If you wish to send a note, Diane's address is 730 Sprague, Eugene, Ore., 97405.

**STAFF INVITED TO JOIN BADMINTON TOURNAMENT** - The intramurals program invites staff to sign up for a badminton tournament on Monday, Wednesday and Friday, Jan. 27, 29, and 31, from 12-noon to 1 p.m. each day. It's free. To sign up, call the Intramurals Office at ext. 2293.

**SAFETY COMMITTEE APPOINTED** - A Safety Committee has been appointed to evaluate the college's policies and procedures which affect safety and health in the workplace and make written recommendations for changes, as necessary; evaluate the college's safety and health training practices and its safety accountability system and recommend changes, as necessary; establish a system to obtain and review safety suggestions and reports of hazards directly from staff; conduct workplace inspections to locate, identify and document safety and health hazards on a quarterly basis and make recommendations regarding necessary corrections; and recommend procedures for investigating all safety-related incidents and recommending corrective action.

The members of the committee would like employees to contact them directly so that they can obtain suggestions, reports of hazards or other information that will help in creating a hazard-free work environment. The members of the committee, their departments and extension numbers are: Ed Case, Purchasing, ext. 2574; Paul Colvin, Campus Services, ext. 2216; Don Hein, KLCC, ext. 2190 or 2224; Sandy Ing, Specialized Student Services, ext. 2666; Eilene LePelley, Business, ext. 2935 or 2251; Debbie Powers, Community & Economic Development, ext. 2120; John Shirey, Computer Information Technology, ext. 2248 or 2826; and Tom Wayne, Science, ext. 2447 or 2446.

**MORE CONFERENCES TO CONSIDER** - For more information about these and other workshops, contact Julie Baker at ext. 2544.

- The Macintosh Survival Course: Troubleshooting and Data Recovery Techniques for the Macintosh, Portland, Feb. 18-19, \$795.
- Staff Development Convention, Florida, Feb. 19-23, \$550.
- Developing and Teach Programs for Adults in the Humanities, Arts & Sciences, Chicago, Feb. 20-23, \$235.
- Employer's Role in Successful Cooperative Education Programs, Seattle, Feb. 25, no fee cited.
- Grammar, Usage, and Business Writing Skills, Eugene, Feb. 25, \$99.
- Education and the Future of Work IX: Working Together to Develop Skills for a Competitive Workforce, Seattle, Feb. 26-27, no fee cited.
- Improving the Academic Performance of At-Risk Students, Portland, Feb. 27-28, \$250.

**- JOBS -**

- Administrative Assistant, Small Business Development Center, Admin. Asst. I, closes 1/31/92.
- Counselor, Half-Time, Downtown and Outreach Centers, Counseling Dept., Faculty, closes 2/14/92.
- Open to LCC employees only: Counselor, Counseling Dept., closes 1/27/92.

**- ADS -**

FOR SALE: Tufted back sofa, 92" long, \$175. Leonard Terrible, ESL, ext. 2253; or home 683-4503.

EXERCISE BIKE with flywheel, timer and Spenco seat cushion. Paula Chan, KLCC, x2486; or evenings, 344-8858. \$75 or best offer.

INEXPENSIVE AUTO REPAIRS AVAILABLE: The automotive technology program seeks autos in need of repairs to transmissions, differentials, clutches, air conditioning, and four-wheel drive components for winter term projects. Labor is provided free and performed by students under supervision. For an appointment call ext. 2388.

MEDITERRANEAN STUDY TOUR: Late July, 1992. Join Kathy Hoy, Lorna Funnell, Emily Rasmussen, Wanda Beckner, and others in a 17-day journey Spain, France, Italy, and Greece. Only \$2,504 inclusive, plus flight tax, own beverages, lunches, optional side tours and optional insurance. Pay in full or go free by signing up 12 paid friends, or save 50% by splitting the 12 with a friend, by Mar. 13 guarantee price deadline. Please call Lorna Funnell or Kathy Hoy at 343-7819 for application materials and instructions about a pre-trip meeting on Tuesday, Feb. 11, from 7-9 p.m. Lorna Funnell, x2906, Cont. Ed.

DAILY INFORMATION - Submit items by 12-noon on the day prior to publication on Mondays, Wednesdays, and Thursdays. Include department, name, and extension. Submissions must be made in writing or E-Mail. All items will be published at least once and more often if space permits.



# The Daily

Edited by Joan Aschim

Published for the staff of Lane Community College

747-4501, ext. 2591

Monday, January 27, 1992

Week Four of Winter Term

## TODAY

- Visitors may drop-in to see President Moskus from 1-5 p.m.
- Duplication Team for Computer Support meets at 3 p.m. in the Board Room.
- Intramural badminton tournament, 12-1 p.m., main gym.
- Women Artists Group show opens at the Art Department Gallery.

**COUNCIL MEETS TOMORROW** - College Council will meet Tuesday, Jan. 28, from 3-5 p.m., in the Board Room. They will discuss their role as a committee, review proposed revisions to the Board Policy Handbook, and hear Vice President Larry Warford discuss plans for a shared decision-making implementation facilitator. Council's next regularly scheduled meeting is Tuesday, Feb. 4, 3-5 p.m., in the Board Room.

**FOUR IN THE RACE FOR BOARD** - Two challengers have filed for seats on the LCC Board of Education. Filing deadline for the March 24 election was Thursday.

Challenging Chuck Ivey for the Zone 1 seat is Francisca E. Johnson of Veneta, an administrator at the Eugene Arts Foundation, and a member of the Fern Ridge School Board since 1986.

Ivey, from Crow, has been on the board since 1988. He is a retired mechanical engineer. He has a bachelor's from the University of Southern California. He has been a Lane County commissioner and Junction City council member and mayor.

Running against Cindy Weeldreyer for the Zone 4 seat is Philip E. Walker of Cottage Grove. He is a free-lance commercial artist and a student at LCC. He has a bachelor's from the U.O. and no prior governmental experience.

Weeldreyer, from Cottage Grove, has been on the board since 1989. She reports for the Cottage Grove Sentinel, is an educational assistant at Cottage Grove High School, and is executive director of the Greater Cottage Grove Community Center. She has a bachelor's from O.S.U. and an associate from Lane. She has served on the Oregon State Board of Higher Education and the LCC budget committee.



Donna Albro  
Affirmative Action Director

**MEET DONNA ALBRO** - Donna Albro started work as LCC's director of affirmative action on January 13. She is the first person to fill the post full-time since 1978. She was selected from a field of about 150 applicants.

Albro says her first objective is to update Lane's affirmative action policy, last revised in 1976. Long term, she wants to develop a comprehensive program that meets all executive order requirements, provides for a way to best increase the number of people of color in the staff and student body,

and which creates an educational environment where all are comfortable.

Albro has held several previous affirmative action positions including posts at Humboldt State University in Arcata, Calif., Clarion University in Clarion, Pa., and the University of Missouri in Columbia, Mo. She also was assistant to the president of California State University in Turlock, Calif., and has held other personnel related positions. Before coming to Lane, Albro taught in the social science department at Alverno College in Milwaukee, Wis.

Albro has a J.D. from Syracuse University College of Law, and a bachelor's degree from Russell Sage College in Troy, N.Y.

Albro has a temporary office in the Industrial Technology Building, Room 208. Her phone extension is 2870. She encourages everyone to drop in and get acquainted.

*Albro says that community colleges can be a powerful tool in breaking down the narrow perception of affirmative action as pertaining only to issues of ethnicity: "People tend to focus only on the issue of race and employment, but affirmative action is also a question of age discrimination, gender discrimination, and rights in terms of people with disabilities."*



**FACULTY COUNCIL SUPPORTS CLASSIFIED** - "Faculty Council recommends that our faculty demonstrate support for the classified staff by not volunteering for the Valley River Center Open House activity." Such was the resolution of Faculty Council following a discussion at its Jan. 23 meeting. LCCEA President Donald Micken said he will announce the recommendation in his newsletter, and note that faculty should work at the open house if directed to do so by their managers since it may be considered contracted work. LCCEF President Jerry Sirois spoke with the group earlier in the meeting. In other business, council discussed state education reform at length with Vice President Jim Ellison.

**CAMPAIGN FINANCE REFORM TO BE DISCUSSED** - Jimi Mathers, president of Lane County Republican Women, will discuss the Bi-Partisan Campaign Finance Reform Initiative on Jan. 29 from 12-1 p.m. and 2-3 p.m. in Center 401.

**BOOKSTORE CELEBRATES** - The Bookstore will celebrate Customer Appreciation Day on Tuesday, Jan. 28. Refreshments will be served at 2 p.m. and a drawing will be held. Sign up for the drawing before 2 p.m.

**SPREADSHEET WORKSHOP OFFERED** - Instructional Computing is sponsoring a workshop on the principles of databases and spreadsheets using Microsoft Works on the Macintosh. The principles can be applied to other systems, including IBM. Development of grade sheets will be demonstrated. The workshop will be held Thursday, Jan. 30, from 2:30-3:30 p.m., in the Center Building, Room 478. For more information or to reserve a space, call Anne Bacon or Sylvia Sandoz at ext. 2436.

**SUBMISSIONS NEEDED FROM LCC WOMEN ARTISTS AND WRITERS** - Here's a chance to showcase your talents in the visual arts in conjunction with a stage performance of "LCC Women in the Arts," on Friday, Feb. 28, at 7:30 p.m., in the Performing Arts Theater. The sponsor, LCC Chapter of American Association of Women in Community and Junior Colleges (AAWCJC), invites women to submit paintings, drawings, jewelry, weaving, published books, etc., ready for display, and subject to space available, for exhibit in the theater lobby. Small items will be displayed in locked glass cabinets. Larger pieces will be displayed on walls or windows. You do not have to be a professional artist to enter--we just want you to share your best efforts and give you a chance to leap into the limelight. Please bring your entries to Kitty Seymour, Art Dept., by Feb. 24. For more information, call her at ext. 2409, or Sharon Thomas at ext. 2145.

**BLOODMOBILE TO VISIT** - The Lane Memorial Blood Bank Mobile Donor Unit will be on main campus on Friday, Jan. 31, from 12-3 p.m. It will be parked outside the snack bar area of the cafeteria. Donuts and juice will be provided. Please take time to make this life-saving donation. Call Student Health at ext. 2665 for an appointment.

CAFETERIA MENU:

	MON	TUE	WED	THUR	FRI
<u>IV</u>	Chicken Noodle	Hollywood Turkey	Oriental Beef	Cauliflower Swiss	Vegetable Chowder
<u>SOUP</u>	Vegetable	Succotash	Egg Flower	L.C.C. Vegetable	Tomato Onion
	Chili	Chili	Chili	Chili	Chili
	Roast Beef	Breaded Pork Chop	Ham Steak	Pepper Steak	Captains Platter
<u>CAFETERIA</u>	B.B.Q. Chicken	Hamburger Squash	Ton Yuk Kui	Ravioli	Tuna Tetrazzini
	Turkey & Ham	Casserole	Oriental Jambalay	Reuben	Patty Melt
		Monte Carlo	Cheese Dream		
<u>MINI LUNCH</u>	Tuna Potato Pie	Chicken Pot Pie	Almond Shrimp	Chicken & Potato	Beef Stroganoff
<u>SETERIAN</u>	Cabbage Rice	Zucchini	Chow Maine	Cheese & Spinach	Potato Cheese
	Pancakes	Casserole		Casserole	Casserole
<u>VEGGIE</u>	Bean Medley	Spinach	Peas & Mushrooms	Carrots	Corn
	Stewed Tomatoes	Cauliflower with	Lima Beans	Green Beans	Brussel Sprouts
	Mashed Potatoes	Cheese Sauce	Mashed Potatoes	Mashed Potatoes	French Fries
<u>SNACK BAR</u>					
	B.B.Q San.	Broccoli & Ham	Hot Beef San.	Hot Turkey Salad	Calazone
		AuGratin			

- ADS -

FOR SALE: SKI PACKAGE. Stay one night (for 2 people) at the Inn at Hood River Village Resort (an \$89 value); and receive 2 ski passes for either Mt. Hood Meadows or Timberline (worth about \$60); must be used before April. \$100 takes all. Call Liz Coleman, x2919, ABSE; or 683-4384.

WANTED: OLDER UPRIGHT PIANO to buy. Talented granddaughter needs lessons. Indulgent grandmother wants to make possible. Joyce Garibay, F&HC, x2632; or 686-0867 anytime, leave message.

FOR SALE: CHEST FREEZER, 25-cu.ft., excellent condition, \$175. Linda Myers, Coop. Ed., call 344-6483.

FOR SALE: PC-COMPATIBLE. Great home or school computer system! Tandy 1000-TX with 3.5 and 5.25 drives installed. High-res 12" color monitor. Panasonic dot matrix printer. Cables, diskettes, software, and lots more extras. Impeccable condition. \$975. Call 484-4913. Sarah LaMaster, IA.

FOR RENT: YACHATS BEACH CABIN, sleeps 1 to 6, 2 night minimum, \$65 for 2 nights. Lots of time available in Feb., Mar., Apr. Your dog is welcome. Jan Brandstrom, Counseling, x2204; or 345-1395.

FOR RENT: SUNRIVER CABIN. Due to a cancellation, my Sunriver cabin is available President's Day weekend for three nights. It's also available some other weekends in February and March including two days of spring vacation. It's cozy with woodburning fireplace, fully equipped kitchen and room for up to six people. \$50 per night; \$55 during holidays. Call Ginny Nelson, E,FL&S, x2426; or 686-8188 evenings.

JUST FOR DANCING - JUST FOR FUN: I'm looking for occasional dance partners and/or groups of people who love to do ballroom dancing, and who would like to meet other LCC staff similarly inclined. Contact Ingrid Gram, Soc. Sci., x2427 or x2846.



# The Daily

Edited by Joan Aschim

Published for the staff of Lane Community College

747-4501, ext. 2591

Wednesday, January 29, 1992

Week Four of Winter Term

## TODAY

- Jimi Mathers of Lane County Republican Women will discuss the Bi-Partisan Campaign Finance Reform Initiative today from 12-1 p.m. and 2-3 p.m. in Center 401.
- Native American dancing, 12-noon to 1 p.m., main campus cafeteria; presented in part by the Native American Student Association. Special guests are children in the Indian Education Act Title 5 program available at local public schools.
- The LCC Education Association Executive Board meets today at 3 p.m. in Center 316. All interested faculty are welcome. LCCEA can be reached at ext. 2177.
- Guests are welcome at the American Association of Women in Community and Junior Colleges Executive Committee meeting today from 4:30-5:30 p.m. in Health 209.
- Intramural badminton tournament, 12-1 p.m., main campus gym.
- The Titans play basketball with Linn-Benton here tonight, women at 6 p.m. and men at 8 p.m.
- Classified Council meets from 3-5 p.m. in PE 205. The group will welcome Affirmative Action Director Donna Albro, and discuss group process.

**RECYCLING WILL BE EASIER** - The college's new paper recycling program will be explained in a one-hour workshop on Monday, Feb. 3, 2-3 p.m., in the Board Room, and repeated Wednesday, Feb. 5, 2-3 p.m., in Forum 308.

Pam Sommerville of Weyerhaeuser, which is taking over the college recycling program, will explain what happens to the papers we recycle, how to prepare them, where to deposit them, and when they'll be collected. Free desk-top recycling aids will be available. At least one person from your department or program should attend this valuable workshop. Refreshments will be provided.

**HIGH SCHOOL STUDENTS INVITED TO COLLEGE FAIR** - LCC will host the second annual College Tour on Thursday, Jan. 30. Representatives from 19 state and private colleges and universities will be available in the main campus cafeteria from 9:30 a.m. to 1:30 p.m. Students will have the opportunity to ask questions concerning programs, admissions, and financial aid procedures. For more information, call Charlene Blinn, Counseling, ext. 2235. Please encourage your students to stop by and meet with the representatives.

**STATEWIDE BROCHURES IN** - We've just received the 1991-92 Oregon community college brochures which list instructional programs available at each institution. If you'd like copies, call me. - Shan Titus, Admissions, ext. 2688

**NOMINATIONS SOUGHT** - The deadline to nominate the Outstanding Classified Employee of the Month for March is Feb. 15. Return the form attached to today's Daily to the Office of Community & Economic Development. Anyone may make a nomination. February's winner will be announced Feb. 3.

**DEADLINE IS FRIDAY** - Classified employees who attended a classification training session in December must turn in their job description questionnaire to their management supervisor by Friday, Jan. 31. Those who attended a January session have until Feb. 28. Questions? Contact Judy Ward at ext. 2583 in Personnel Services.

**HELP IS AVAILABLE** - Need help putting your thoughts into words on the job description questionnaire? Personnel Services can help put you in touch with an on-campus writing tutor who can help. Contact Judy Ward at ext. 2583. There is no charge for this service.

**REMINDER TO SUPERVISORS** - Supervisors should not be asking employees to complete job description questionnaires earlier than the published deadline dates. Some employees may need more than six hours of release time to complete the survey. Please allow adequate release time for your employees, and for yourself when the time comes. - Personnel Services





**Garry Oldham**  
*Cooperative Education*

**MEET GARRY OLDHAM** - Garry Anne Oldham recently returned to LCC as Cooperative Education coordinator for the chemical dependency counselors training program. Oldham says students in this program need over 600 hours of field work to get their degree.

Oldham taught psychology and other courses at Lane from 1982-84, conducted a student follow-up survey for Lane in 1981, did a training needs assessment for the college's Community Services Program in 1982, and counseled in the Family Education and Counseling Program here in 1980.

She has worked in social services for employers and clients such as the State Mental Health Division, Lane County Alcohol and Drug Prevention project, Whitebird, Womenspace, Northwest Center for Community Programs, Halfway House Services and others since 1971. Most recently, she has worked in the human services department at the UO since 1984.

Oldham has a bachelor's and master's in psychology from the UO and is a state certified vocational counselor. She is on the board of Oregon Research Institute.

**NEW COMPUTER SYSTEM TO BE DEMONSTRATED** - The Instructional Support Staff Association is sponsoring a demonstration of the Hewlett-Packard New Wave computer technology on Thursday, Jan. 30, at 3 p.m. in Forum 308. Anyone interested may attend.

**LOST OUR LEASE** - The Library cleared out Center 311. Now we're looking for a clean sweep of booksale shelves. Attend our sale in the Center Building Lobby Feb. 3-5 from 10 a.m. to 2 p.m. Lots of titles in the areas of management, child development and education, computers, and media arts will be on sale. Prices? \$1 hardbound and .50 cents softbound.

**PROMOTIONAL COFFEE MUGS AVAILABLE** - New LCC coffee mugs are available at the Bookstore for \$3.50 each. They are made of clear glass inscribed with Lane Community College in handsome blue lettering.

**THANKS TO FANS** - A great big thanks to all who helped your Titan basketball teams raise \$1,020 for Campus Ministry! - Harland Yriarte, Athletic Director

**THANKS FOR HARD WORK** - Many, many thanks to Debra Roach in Admissions for putting the reclassification forms on a computer disk for the classified staff. It will make the process faster and the task easier. - Second Floor Center Building classified staff

**WELCOME** - Purchasing Services is delighted to announce that Diane Prokop is our new administrative assistant. Diane's initial schedule will be Monday through Thursday afternoons. Please join us in welcoming her to Purchasing Services. - Lloyd Rain, Ed Case, Steve Evans, and Bob Cudmore

**MASS FOR EDUCATORS** - A special mass honoring all educators who teach at Catholic, private and public schools and at LCC and the UO will be held at 11 a.m. on Sunday, Feb. 2, at the Newman Center, 1850 Emerald Street, Eugene. A reception will follow. For more information, contact Joanne Wallace, part-time Counseling staff, at 343-7021.

**STAFF DIRECTORY CHANGES** - Eilene LePelley can be reached at ext. 2930. Please note this change on pages 7 and 53 in your staff directory.

Darlene Ogan can be reached at ext. 2931. Note this change on pages 7 and 55 of your staff directory.

**- ADS -**

FOR SALE: '62 CHEVY half-ton pickup, 283 runs good, good interior. Very straight body with canopy. \$1000 firm. Kris Ogden, Study Skills, x2439; or Steve at home after 2 p.m., 343-0135.

FOR SALE: PC-COMPATIBLE. Great home or school computer system! Tandy 1000-TX with 3.5 and 5.25 drives installed. High-res 12" color monitor. Panasonic dot matrix printer. Cables, diskettes, software, and lots more extras. Impeccable condition. \$795. Call 484-4913. Sarah LaMaster, IA.

FOR SALE: 1984 GMC S15. V6, 5-speed, \$3,895. 1980 DATSUN King Cab, 5-speed, \$1,395. Both with canopy. Dal Haverland, 687-1251, or x2440, Counseling.

FOR SALE: 1978 CHEV pickup-camper special, V8, PS, PB, tilt wheel, autotrans, trans cooler, cruise, air, good tires, new shocks, good interior and body, dual batteries, wired for camper, dual tanks, \$3,000 OBO. Carolyn Haynes, x2121, Math; or call 344-4470 and ask for Fred Hayens; or 485-6197, home.

FOR SALE: 11-FOOT CABOVER CAMPER, icebox, range/oven, porta-potty, redecorated one year ago, sleeps 4+, dual propane tanks, sink, large water supply, electric water pump, Levelor blinds, curtains, \$1,450 OBO. Carolyn Haynes, x2121, Math; or call 344-4470 and ask for Fred Hayens; or 485-6197, home.

**DEADLINE INFORMATION** - Deadline for the Daily is 12-noon of the working day prior to publication on Mondays, Wednesdays, and Thursdays. Submissions must be made in writing and must include your full name, department, and extension number. Ads are free and limited to staff. All items will be published at least once and more often if space permits.



# The Daily

Edited by Joan Aschim

Published for the staff of Lane Community College

747-4501, ext. 2591

Thursday, January 30, 1992

Week Four of Winter Term

## TODAY:

- ♦ Second Annual College Tour, main campus cafeteria, 9:30 a.m. to 1:30 p.m. Please encourage Lane's students to drop by and visit with representatives from 19 state and private colleges and universities.
- ♦ Demonstration of Hewlett-Packard New Wave computer technology at 3 p.m. in Forum 308. Sponsored by Instructional Support Staff Association.

**LANE WINS GRANT** - LCC will use a three-year vocational grant to better serve people with disabilities, people with limited proficiency in English, single parents, people of color, and displaced homemakers, says grant administrator Bob Way, Cooperative Education Department Head. LCC received notice of the first-year award of \$494,512 in late November from the Oregon Department of Education. The grant is federally funded by the Carl D. Perkins Vocational and Technical Education Act.

Vocational programs will be expanded to meet the needs of special populations, says Way. Improvements will range from stronger efforts to get the word out about vocational programs and careers, to installation of specialized equipment, to increased counseling services. In addition, math courses will be revised to better match the demands of specific vocations and computer literacy will be promoted in all applicable programs.

LCC hopes to see an 8 percent increase in applications to vocational programs from the target populations by 1994. Another goal is to decrease the drop-out rate by 20 percent. An 80 percent placement rate for graduates in jobs or higher education also is sought, and if achieved, would make the placement rate for special populations equal with that of traditional students.

Six departments and seven programs will receive grant funds: Cooperative Education, Counseling, Disabled Student Services, Instructional Computing, Math, and Study Skills; and Recreational Vehicle Service Technology, Welding Technology, Technical Drafting, Aviation Maintenance, Computer Programming, Nursing, and Office Administration.

The grant arrived just a few weeks before National Vocational Education Week from Feb. 9-15.

**JUNEBUG JABBO JONES TO VISIT CAMPUS** - Lane students and staff are invited by Performing Arts and ASLCC to take in a demo-talk by nationally famous actor, storyteller and activist John O'Neil. O'Neil, in the character of Junebug Jabbo Jones, has been exposing the truth about all kinds of delicate subjects for some 30 years. He rose to fame for his work down south during the civil rights movement of the '60s. These days, "tough, tender and uproariously funny, Junebug's parables give voice to those who carved an identity and strength out of poverty and discrimination."

He will perform at the Hult Center on Feb. 4 and 5, but LCC people can get an insight into this marvelous artist on Lane's main stage, Monday, Feb. 3, from 10-11:30 a.m. The presentation kicks off Lane's observance of Black History Month. Admission is free. Pass the word! - Dick Reid, Chair, Art & Applied Design, Media Arts & Technology, & Performing Arts Depts.

**ANTI-VIRAL SOFTWARE AVAILABLE** - Anti-viral software for IBM compatible computers has been purchased by the Office of Instruction. The software is available to both instructional and non-instructional users.

To receive a copy, send an intercampus order to Instructional Computing with the following information: 1) the number of computers in your department and their respective E-numbers from their inventory stickers; 2) the type of floppy disk used, whether 5-1/4 inch or 3-1/2 inch, high density or low density; 3) name and extension number of whoever in your department should be notified of quarterly updates. Direct questions to Chris Russell at ext. 2288. The current software is licensed for two years and requires registration of all users.

**STUDENT SUCCESS PLANNERS TO MEET** - Participants of the Student Success Conference are asked to attend a pre-conference College Action Planning Session (CAPS) at 3 p.m. on Monday, Feb. 10, in Center 316. Bring your conference booklet with you. - Evelyn Nagy, LEAP, ext. 2947



**MORE ON SHARED DECISION-MAKING** - President Jerry Moskus often quotes from Max DePree, Leadership is an Art, New York, Doubleday, 1989, 136 pages. If a copy isn't floating around your department, order through the Bookstore. Some excerpts:

[Organizations are moving] from a posture and a practice of management through power to a process of leadership through persuasion. This, of course, tends to make the use of formal organizational power out of date.

Everyone has the right and duty to influence decision-making and to understand the results. Participative management guarantees that decisions will not be arbitrary, secret, or closed to questioning.

Five steps to turn ideals about relationships into reality: Respect people. What we believe precedes policy and practice. Agree on the rights of work. Understand the respective role and relationship of contractual agreements and covenants. Understand that relationships count more than structure.

Rights of workers: The right to be needed. The right to be involved. The right to a covenantal relationship. The right to understand. The right to affect one's own destiny. The right to be accountable. The right to appeal. The right to make a commitment, to be allowed to do one's best.

**INEXPENSIVE AUTO REPAIRS AVAILABLE** - The automotive technology program seeks autos in need of repairs to transmissions, differentials, clutches, air conditioning, and four-wheel drive components for winter term projects. Labor is provided free and performed by students under supervision. For an appointment call ext. 2388.

**O-NEGATIVE BLOOD NEEDED, OTHER TYPES TOO** - The Lane Memorial Blood Bank reports a desperate need for O-negative blood. The bank's Mobile Donor Unit will be on main campus on Friday, Jan. 31, from 12-3 p.m., to take blood donations. It will be parked outside the snack bar area of the cafeteria but screening will take place in the Renaissance Room. If you have o-negative blood, please don't pass up this opportunity to save lives! Other blood types also are needed. Call Student Health at ext. 2665 for an appointment.

**STAFF WOMEN INVITED TO SUBMIT ART** - Women staff members of LCC are invited to submit paintings, drawings, jewelry, weaving, published books, and other artistic work for consideration in a Performing Arts lobby display in conjunction with a stage performance of "LCC Women in the Arts," on Friday, Feb. 28, at 7:30 p.m., in the main theater. Small items will be displayed in locked glass cabinets. Larger pieces will be displayed on walls or windows. The sponsor, LCC Chapter of American Association of Women in Community and Junior Colleges (AAWCJC), says entrants need not be professional artists. "We just want you to share your best efforts and give you a chance to leap into the limelight." Submit entries to Kitty Seymour, Art Dept., by Feb. 24. For more information, call her at ext. 2409, or Sharon Thomas at ext. 2145.

**CHILD CARE CO-OP HOSTS OPEN HOUSE** - The ASLCC Child Care Co-Op invites staff to visit its Open House on Tuesday, Feb. 4, from 9 a.m. to 5 p.m. The co-op is located in a modular building set up in the northwest parking lot on main campus. A ribbon will be cut at 4 p.m. Cake and refreshments will be served.

- ADS -

**LAB RESCUE:** Labrador Retrievers for adoption. Dogs from abusive or unwanted homes are trained and placed in loving homes for a second chance at a good life. A minimal fee is requested to cover costs of boarding and release from the Roseburg Animal Shelter. Contact Susie Morrill, Media Arts Dept., ext. 2475.

**FOR SALE:** 1984 GMC S15. V6, 5-speed, \$3,395. 1980 DATSUN King Cab, 5-speed, \$1,395. Both with canopy. Dal Haverland, 687-1251, or x2240, Counseling.

**FOR SALE:** HONDA ACCORD hatchback, 1976, good condition, \$1,000 or best offer. Call Robert at 683-2526. (Marje Takei, Counseling, x2244).

**WANTED:** CABIN to rent in Cannon Beach/Seaside area for weekend of 4/3-5. Contact Denine McMurren, ext. 2507, ABSE.

**FOR SALE:** DODGE Aspen station wagon. AM/FM cassette, trailer hitch with light package. Excellent condition, clean, runs well. \$500 OBO. Call Chris Hainley, 726-1907; or ext. 2351, Financial Aid Dept.

**FOR SALE:** '62 CHEVY half-ton pickup, 283 runs good, good interior. Very straight body with canopy. \$1000 firm. Kris Ogden, Study Skills, x2439; or Steve at home after 2 p.m., 343-0135.

**FOR SALE:** PC-COMPATIBLE. Great home or school computer system! Tandy 1000-TX with 3.5 and 5.25 drives installed. High-res 12" color monitor. Panasonic dot matrix printer. Cables, diskettes, software, and lots more extras. Impeccable condition. I will set it up for you. \$795. Call 484-4913. Sarah LaMaster, IA.

**FOR SALE:** 1978 CHEV pickup-camper special, V8, PS, PB, tilt wheel, autotrans, trans cooler, cruise, air, good tires, new shocks, good interior and body, dual batteries, wired for camper, dual tanks, \$3,000 OBO. 11-FOOT CABOVER CAMPER, icebox, range/oven, porta-potty, redecorated one year ago, sleeps 4+, dual propane tanks, sink, large water supply, electric water pump, Levelor blinds, curtains, \$1,450 OBO. Carolyn Haynes, x2121, Math; or call 344-4470 and ask for Fred Haynes; or 485-6197, home.

**DEADLINE INFORMATION** - Deadline for the Daily is 12-noon of the working day prior to publication on Mondays, Wednesdays, and Thursdays. Submissions must be made in writing and must include your full name, department, and extension number. Ads are free and limited to staff. All items will be published at least once and more often if space permits.