

# The Daily

Edited by Joan Aschim

Published for the staff of Lane Community College

747-4501, ext. 2591

Thursday, October 1, 1992

First week of fall term

## Fall Welcome Week continues

- Street Fair information about student organizations, clubs and special programs, Thursday and Friday, Oct. 1-2, main campus.
- Bar-b-que. Chicken and all the fixin's, Friday, Oct. 2, 11:30 a.m.-1:30 p.m., outside the Cafeteria.
- Ping-Pong Ball Drop, Friday, Oct. 2, 12-noon: Bristow Square. Students only may redeem the numbered balls for prizes.
- Flea market and bring-your-own picnic, Saturday, Oct. 3, 10 a.m.-5 p.m., main campus, northwest parking lot.

Fall Welcome Week is sponsored by Student Activities and the Native American Student Association.

## Classified union to hold meeting on classification study

The Lane Community College Employees Federation invites all classified staff to a meeting on Tuesday, Oct. 6, at 12-noon, in Forum 308, to discuss progress with the classification study. Recently held open meetings on various job families will be discussed.

## Data phone extension for the Hewlett-Packard is 3777

There are no longer any lines connected to the Honeywell mainframe computer. To use your data phone to connect to the new Hewlett-Packard mainframe computer, please use extension 3777.

## Business woman joins Lane



Peg Allison

Peg Allison joined the Business Development Center and Customized Training this summer to help coordinate workshops and special projects. She is a former client of the Small Business Management program at Lane as co-owner of the former Creative Kids toy store and Kid's Edition children's book store in downtown Eugene.

Before opening her retail stores, Peg owned Towne Carousell Day School from 1970-88. The facility was licensed for 120 children and employed a staff of 20.

She has a bachelor's degree in elementary education from the University of Oregon and is a graduate of Parkrose High School in Portland.

Active in local organizations, Peg serves on the board of Planned Parenthood of Lane County and Downtown Eugene, Inc. She is a former member of the Oregon Association of Day Care Directors. She has been president of all these organizations.

To visit with Peg or find out more about what's happening in the Business Development Center or Customized Training, call her at ext. 2923 or visit her at the Downtown Center, room 215.

## Handbook for working with learning disabled students available

"Working with Learning Disabled Students at Lane Community College - A Handbook for Faculty" is available for all faculty interested in learning more about learning disabilities. If you have students requesting accommodations because of learning disabilities, or if you are not sure where to route L.D. students for services and support, this handbook provides you with valuable information. For your handbook, contact Linda Wong or Libby Page, Study Skills Center, ext. 2439.

## Management Personal Development Committee to review requests

The Management Personal Development Committee will meet Oct. 22 to review applications for personal and professional development. Please submit applications by Oct. 16, 1992 to allow time for the applications to be distributed to committee members. New application forms are available for both personal and professional development. Call Lloyd Rain at ext. 2208 for forms and guidelines.

## Students needed for video profiles

We're seeking students for the new high school marketing video to represent different academic areas. The students should be outgoing, photogenic, within five years of high school graduation (or GED), be positive about their LCC experience, and be willing to talk to a camera. We're especially interested in students in these programs: general transfer, technical drafting, nursing, dental assisting, dental hygiene, flight tech., broadcasting, performing arts, business management, office administration. The students won't be paid, but the time commitment will be small and it will be a fun project. If you know any students matching this description, please call Shan Titus at ext. 2688.



### Faculty art reception is Friday

A reception for Art Department faculty will be held Friday, Oct. 2, from 7:30-9:30 p.m. in the Art Department Gallery. Faculty art is on display in the gallery through Oct. 23.

### Renaissance Room taking reservations

Lane's student-run gourmet restaurant, The Renaissance Room, will take reservations for lunch beginning Oct. 20. Lunch will be served on Tuesdays, Wednesdays and Thursdays from 11:30 a.m. to 1:15 p.m.

The Deli will be open Tuesdays, Wednesdays and Thursdays from 9 a.m. to 1 p.m., beginning Oct. 20.

The first Classical Cuisine dinner will be Nov. 19.

Please call ext. 2697 for information and reservations.



### Roundtable presentations appreciated

The Student Success Committee would like to thank presenters of the roundtable sessions held during recent professional development. Your presentations made us aware of the talent we have at Lane.

### Applause

A giant round of applause for the staff of Printing and Graphics for the excellent job they did on the fall inservice brochure! Their many creative ideas, team work, and accuracy made working with them a pleasure.

And thank you too, for the generous time donated to create the flyers for the Nancy Jaques Insurance Fund drive and the hands motif drawing done by Steve Downey. - Julie Baker, ext. 2199.

### Conferences to consider

For more information about the following workshops, contact Julie Baker at ext. 2199.

- Working Together Works, Oregon Professional Technical Development Association, Portland, Oct. 8-10, \$95.
- Leadership Strategies for Continuous Improvement, Oregon Institute of Technology, Klamath Falls, October 17 - 21, \$160.
- Doing Business With Business: Developing Effective Business and Higher Education Partnerships, Chicago, Oct. 19 - 20, \$350.
- Communication Skills for Secretarial Effectiveness, Oct. 23, Salem, \$105.
- Promoting Vitality Through Teaching Technology Teamwork, NCSPD, Reno, Oct. 23 - 27, \$295.
- High Impact Communication Skills for Women, CareerTrack, Eugene, Oct. 28, \$49.
- Understanding Male/Female Communication Differences, Salem, Oct. 29, \$105.

### Thanks

The Daily staff appreciates all reader contributions, especially those that are typed. Typed submissions can be scanned, improving both speed and accuracy.

Deadline for submissions to The Daily is 12-noon of the working day prior to publication on Mondays, Tuesdays, Wednesdays, and Thursdays during fall, winter and spring terms, and Tuesdays during summer term. Send submissions to The Daily in intercampus mail or deliver to The Daily box outside Admin. 210. Call ext. 2591 for more information.

- ADS -

FOR SALE: GUN CABINET, glass doors, plywood construction, top and bottom drawers, 54" wide, 86" high, 20" deep; \$100. Contact Lloyd Rain, Purchasing, ext. 2208.

FOR SALE: SEARS LAWN SWEEPER, gas-engine-driven blower, with catch bag and all accessories. Hasn't been started in about five years. As is, \$50. Contact Lloyd Rain, Purchasing, ext. 2208.

NEED A CAMPING/HUNTING OUTFIT? Umbrella tent, 8x10' (great condition), two-burner Coleman stove, and will throw in a "camping kitchen" of pots, pans, etc. Julia Poole, Counseling, ext. 2512.

WANTED: OLD MS-DOS and DOS-2 software for Texas Instruments Professional Computer. Call Rich Platz at ext. 2455, Campus Services, or 345-0328 before 1:30 p.m. on weekends.

BEAUTIFUL MOMENTS CAN BE CAPTURED with this Pentax SF-1 camera. Included in price: 28/80 and 70/200 lenses, and large padded camera bag with many pockets. Asking \$385. Luci Edminster, Co-op Ed., ext. 2024.

HOUSE FOR RENT: 4250 Donald St. 3-bedroom, family room, 2 full bathrooms, hardwood floor and fireplace in living room, large utility room, huge fenced backyard with covered patio. Family room works great as master bedroom. Heated, tiled garage doubles as a playroom or rec room. One upstairs bedroom can be used as office with picture window overlooking backyard. Lots of storage. Walking distance to Edgewood and Spencer Butte Schools and Edgewood Plaza. Seven-minute drive to LCC! No pets or smokers. \$850/month. Call Gayle Chisholm at KLCC, ext. 2484, or at home, 342-7324.

FOR SALE: '77 TOYOTA Corolla wagon, automatic, one owner, well maintained, new engine, \$1,395. Contact Gayle Smith at 689-3135, evenings. (Math Dept., ext. 2123)

FOUND: GOLD RING with two hearts found in front of Admin. Bldg. Can be located at Lost & Found, Security Services, second floor Campus Services Building.



# The Daily

Edited by Joan Aschim

Published for the staff of Lane Community College

747-4501, ext. 2591

Monday, October 5 1992

Second week of fall term

## Calendar

- ASLCC meeting, Tuesday, Oct. 6, 3:30 p.m., Cafeteria.
- College Council meeting, Tuesday, Oct. 6, 1:30-3 p.m., Board Room, (see agenda below).
- Administrative Services managers' meeting, Tuesday, Oct. 6, 8:30-10 a.m., Board Room.
- Instructional Cabinet meeting, Wednesday, Oct. 7, 1:30 p.m., Board Room.
- Student Services directors' meeting, Wednesday, Oct. 7, 9-10:30 a.m., Admin. 206.
- FIPSE grant brown bag forum, Thursday, Oct. 8, 11 a.m.-1 p.m., Board Room (see next page).
- Multicultural Center Social Hour, Thursday, Oct. 8, 1:30-3 p.m., Center 409.
- Faculty Council meeting, Thursday, Oct. 8, 3-4:30 p.m., Board Room.
- Diversity Committee meeting, Monday, Oct. 12, 3 p.m., Center 420.

## Eldon G. Schafer innovation awards given

Two instructors and one intern swept up the Eldon G. Schafer Endowment for Innovation Awards for 1992. The awards were presented at the Sept. 21 all-staff meeting.

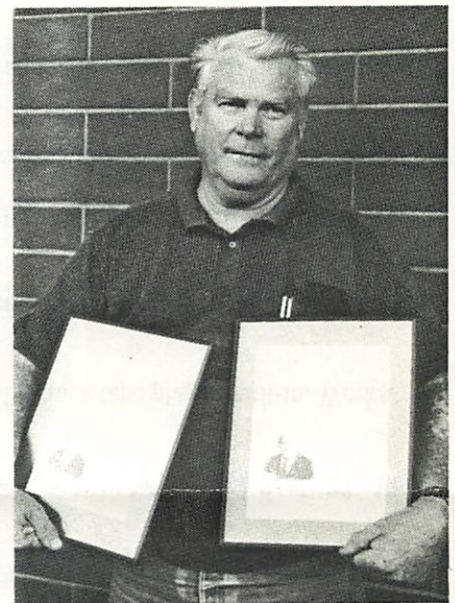
Welding Instructor Ed Humes of the Industrial Technology Department won the "Seed Money" award. He received \$5,800 to develop a welding manufacturing class. The class will produce items for resale to industry and the community. The class will order all materials and do the cutting, fabrication, welding, painting and sale of the products. Sales revenue will be returned to the welding program to buy new equipment and supplies. In addition, a percentage of the profits will be given to the Eldon G. Schafer Endowment to pay back the grant award.

Humes also received a "Pat on the Back" award for the special recognition he and his welding students received from the Oregon legislature for fabricating supports for Christmas lights and decorations for the State Capitol Building.

Small Business Management Instructor Jean Names of the Business Development Center won a "Pat on the Back" award for developing a network for women graduates of the three-year business program. Twelve women meet with Jean monthly at Marie Callender's and discuss business issues and concerns. From their number, meeting place and schedule, they chose to call their network "The Callender Girls." Jean mentors the group in addition to her full-time faculty load.

Counseling and Career Information Center intern Beth Swank won a "Pat on the Back" award for developing a one-credit career and life planning/individualized instruction packet for use by counselors, CIC staff and other Lane staff who assist students with career decisions. She developed the packet while attending Lane last year as a master's degree program practicum student in counseling psychology from the UO.

The awards were presented by Lucy Schafer, chair of the awards committee and widow of the late Eldon G. Schafer. The Endowment is administered through the LCC Foundation under the direction of Joe Farmer.



*Ed Humes*



*Jean Names*

## College Council agenda highlights

College Council will meet Tuesday, Oct. 6, from 1:30-3 p.m. in the Board Room. Council will review the Institutional Effectiveness Measures Task Force Report and the agenda for the Oct. 14 Board of Education meeting. Council will discuss revisions to the policy on the sale of surplus property, agent-of-record reimbursement, cost-saving proposals, internal chargebacks and the Shared Decision Making Evaluation Report.

## Alison Davis WhiteEyes to speak

Alison Davis WhiteEyes from the University of Oregon Multicultural Center, will speak in Jerome Garger's Peace & Conflict Studies class on Tuesday evening, Oct. 6, from 7:15-8:30 p.m., in Center 449. Her topic: "The True Meaning of 1492." Guests are welcome.



## Cultural diversity classes open to staff

Issues in Cultural Diversity offers two sections fall term, one on Tuesday afternoons from 3-4:30 p.m. and one on Tuesday evenings from 5:30-7 p.m. Each will be held in Apr. 223. Staff may register for one credit of audit for either of these sections through the Social Science Department. The first session is this Tuesday, Oct. 6, on "Myth, History & Multi-cultural America." For more information, contact Vicki Levine at ext. 2074 or 345-8344.

## Flu shots available

Flu shots will be available at Student Health from now through Dec. 4. Price will be \$8. No appointment is necessary.

## Want a FIPSE grant? Come to this brown bag lunch forum

Faculty and staff interested in pursuing a grant to the Fund for the Improvement of Post-secondary Education (FIPSE) should come to a brown bag lunch and forum scheduled for Thursday, Oct. 8, 11 a.m.-1 p.m., in the Board Room. Learn what goes into a preliminary proposal. Deadline is Oct. 27! Share ideas and questions with Sarah LaMaster, Grants Coordinator; Ron Mitchell, director of the college's current FIPSE-funded program; and, Donna Albro, author of a FIPSE preliminary proposal for the upcoming competition. B.Y.O.L. (that's lunch). Call Sarah LaMaster, Grants Coordinator, ext. 2312 for further information.

## JOINT CLASSIFICATION STUDY

The Joint Review Committee (JRC) encourages each individual employee and supervisor to attend one or more open meetings to discuss the new job class specifications. Open meetings are scheduled in the Board Room to discuss the following job families:

- Foodservices, Bookstore -- Oct. 6, 9-10 a.m.
- Admissions, Counseling, Financial Aid, Student Records -- Oct. 6, 10:30-11:30 a.m.

## KLCC Fall Radiothon to begin

KLCC/KLCO's on-air campaign for new members and membership renewals begins Thursday, Oct. 15, at 5 a.m. during Morning Edition. The Fall Radiothon goal is \$100,000. The station depends on listener contributions for 27 percent of its budget.

## - ADS -

GREAT ROTARY DUCK RACE tickets are available from Edna Grass in the Job Placement Office, Forum 302, ext. 2217. Proceeds will benefit Birth to Three, the Relief Nursery, and Womenspace.

CONGRATULATIONS to Betty Young of Training & Development for running the Portland Marathon on Sept.. 27. You are an inspiration! - your fans.

FOR SALE: CURTIS MATHIS console color TV. Beautiful wood cabinet, AM/FM 8-track tape player built-in. Works great. \$200. Rodney Brown, Counseling/Testing, ext. 2325, 343-4686.

THE BOOKSTORE HAS 92/93 ACADEMIC APPOINTMENT BOOKS, desk calendars and wall calendars. Some of the selection is made out of recycled materials.

FOR SALE: CLIPPER ELECTRIC FORKLIFT, needs batteries, asking best offer. Bob Cudmore, Purchasing, ext. 2571.

FOR SALE: GUN CABINET, glass doors, plywood construction, top and bottom drawers, 54" wide, 86" high, 20" deep; \$100. Contact Lloyd Rain, Purchasing, ext. 2208.

FOR SALE: SEARS LAWN SWEEPER, gas-engine-driven blower, with catch bag and all accessories. Hasn't been started in about five years. As is, \$50. Contact Lloyd Rain, Purchasing, ext. 2208.

NEED A CAMPING/HUNTING OUTFIT? Umbrella tent, 8x10' (great condition), two-burner Coleman stove, and will throw in a "camping kitchen" of pots, pans, etc. Julia Poole, Counseling, ext. 2512.

WANTED: OLD MS-DOS and DOS-2 software for Texas Instruments Professional Computer. Call Rich Platz at ext. 2455, Campus Services, or 345-0328 before 1:30 p.m. on weekends.

## MAIN CAMPUS CAFETERIA WEEK # 2

	MONDAY	TUESDAY	WEDNESDAY	THURSDAY	FRIDAY
SNACK BAR	MEXICAN MACARONI	BEEF ENCHILADA	MACARONI & CHEESE	CHICKEN POT PIE	GRILLED TUNA ON RYE
SOUP	WATERLY CHEESE BEEF SOUP CHILI	COOK'S CHOICE CHILI	SPINACH CELERY THREE BEAN CHILI	TOMATO ONION BEEF BARLEY CHILI	SEAFOOD CHOWDER COOK'S CHOICE CHILI
MAIN ENTREE	TURKEY WITH DRESSING HAM & BROCCOLI BAKE 3 CHEESE SANDWICH	PORK CHOP & RICE PILAF MEXICAN CASSEROLE PIZZA	BEEF BURGUNDY CHICKEN POT PIE PASTRAMI & CHEESE	BAKED HAM & PINEAPPLE TAMALE PIE MONTE CRISTO	BAKED COD WITH BREADCRUMB TOPPING CHICKEN A LA KING PHILLY BEEF
VEGGIE	MONTEREY QUICHE	MACARONI & CHEESE	VEGGIE LASAGNA	SPINACH TOMATO BAKE	CHINESE SPAGHETTI
MINI	BEEF ENCHILADA	HAWAIIAN MEAT BALLS	STIR FRY WITH TURKEY	TURKEY TETRAZZINI	NOODLE DELIGHT
VEGETABLES	MEXI CORN BROCCOLI	SPINACH YELLOW SQUASH	ASPARAGUS CARROTS OBRIEN	BRUSSELS MIXED VEGETABLE	GREEN BEANS CREAM CORN



# The Daily

Edited by Joan Aschim

Published for the staff of Lane Community College

747-4501, ext. 2591

Tuesday, October 5, 1992

Second week of fall term

## Enrollment update

Fall term credit enrollment was up 595 students over last year as of Oct. 1, reports Student Services. The increase brought total credit headcount to 9,550 students, a 7 percent increase over last year's 8,955 as of the same date..

## Faculty Council to discuss Ballot Measure 9, other items

The next Faculty Council meeting will be Thursday, October 8, at 3 p.m. in the Board Room. Discussion items include a report on the Institutional Effectiveness Task Force, a proposed change to the board policy on overload classes, and implications to teaching of Ballot Measure 9.

## Diversity Committee to meet

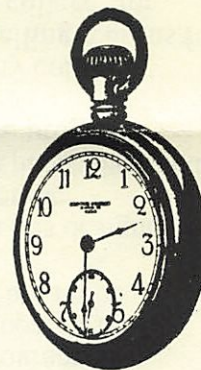
The Diversity Committee will hold its first meeting of the new academic year on Monday, Oct. 12, at 3 p.m.. in Center 420. This group has gone from a task force to a permanent committee. Guests and potential new members are welcome to attend as we review where we've been and where we're going with our priorities for 1992-93. Questions? Call Vicki Levine at ext. 2074.

## Student success strategies conference call for proposals

Proposals for the 1993 Student Success Strategies VIII are due October 26. The theme of the Conference is "Getting Past the Rhetoric." The conference will be Feb. 24, 25 and 26, 1993, at the Red Lion-Jantzen Beach, Portland. This regional conference has an outstanding reputation in providing cutting edge strategies for student success. For information and proposal forms, please call Joyce Kofford, ext. 2315, or stop by the Student Services office and pick one up.

## Professional development workshop will teach time management

Is time getting away from you? Is there never enough time to accomplish all the things you would like? Fall term offerings for classified professional development begin with time management. Linda Pompel, Family and Health Careers Instructor, will share time management tools useful in providing balance in work and family life. Join us Thursday, October 15, at 3 p.m. in Business 203. - Julie Baker, ext. 2199.



## Multi-Cultural Center social hour offers opportunities

Staff are invited to share refreshments and good conversation at the Multi-Cultural Center Social Hour every Thursday from 1:30-3 p.m. in Center 409. The first one this year is this Thursday, October 8.

## Students needed for video profiles

High School Relations seeks students representing different academic areas for a new high school marketing video. The students should be outgoing, photogenic, within five years of high school graduation or GED, positive about their LCC experience, and willing to talk to a camera. If you know any students matching this description, please call Shan Titus at ext. 2688.

We're especially interested in students in these programs: general transfer, technical drafting, nursing, dental assisting and hygiene, flight technology, broadcasting, performing arts, business management, and office administration. Students will receive a copy of the video and gain experience working on a fun project.

## Teleconference will explore academic and vocational education

Interested in the movement toward tech prep and the "Integration of Academic and Vocational Education?" A teleconference about this issue will be held on Wednesday, October 14, from 10:30 a.m. to 12 p.m. in Center 10. The first of a four part series sponsored by the National Center for Research in Vocational Education, this teleconference will focus on exemplary programs. If you are interested in attending, please call Judith Gabriel, ext. 2699., to pre-register.

## Three LCC staff honored by City of Eugene

Industrial Technology Chair Carl Horstrup and construction instructor Hal Davis were presented Partnership Awards by the City of Eugene Department of Public Safety in a ceremony on Sept. 30 in the city council chambers. They were recognized for their assistance in the construction of a SWAT live fire house at the Burks Public Safety Regional Training Center. LCC programmer Alan Bahret received a Certificate of Appreciation at the same event. Bahret was honored for his service as a Lane County Sheriff's Office reserve officer.



**Discovering Southeast Asia: a seminar**

“Discovering Southeast Asia: A Dynamic Region’s Economic and Investment Potential,” will be held Thursday, October 8, from 10:30 a.m.-1 p.m., at the UO Len Casanova Athletic Center. The seminar is for students, community members, and businesses who want to understand and take advantage of Southeast Asia’s internal and cross-national transformations. Registration deadline is today, October 6. Call the UO at 346-5087 or Dain Bosworth, Inc., at 485-4550 to sign up.

**Low cost dental hygiene care available**

Low cost dental hygiene care is available at the LCC Dental Clinic. Services provided include teeth cleaning and gum disease therapy, including check-up x-rays and screening exam for \$17 to \$22 for adults and \$10 for children. Sealants are available for adults and children for \$2 per tooth. Other services include nutritional counseling, polishing and recontouring of fillings, and bacterial microscopic evaluations, all at no cost.

Students perform the services under professional supervision. Graduates of the college’s two-year degree program in dental hygiene consistently enjoy a 100 percent employment rate. Lane offers one of only five such programs in Oregon. The Dental Clinic is located in Health 272. To make an appointment, call ext. 2206.

**Needs changing at community colleges**

A subcommittee of the Oregon Community College Association met Sept. 15 to discuss how local demands on community colleges have changed over time. The following chart shows some of these changes:

Year	Transfer	Prof/Tech	Other Reimbursable	Non-Reimbursable
1966-67	40.3%	44.5%	5.6%	9.6%
1977-78	35.5%	43.4%	17.8%	3.3%
1990-91	41.7%	31.21%	23.85	3.24%

These figures count full-time equivalency. Thus, for a professional technical program that requires college algebra or a writing course, those courses are listed in the transfer numbers. The percentage of these transfer-type courses differ by program. Technical programs today are much broader than 20 years ago.

In addition to the changes that have occurred across the state, each regional area has designed the mix of programs that best meets local needs. As local regions develop programs to meet the requirements of education reform, to meet regional workforce needs, and to address the particular needs of the community they serve, they must have the flexibility to decide on the mix of these programs locally.

These issues are of concern to OCCA as the state considers creating a community college system. Says OCCA Executive Director Karen Garst: “While I’m sure there are compelling reasons for the state to attempt to make these decisions in Salem, this could result in a ‘community college’ for Oregon that doesn’t really work in any local community.”

**- JOBS -**

Communications/Data Specialist, Specialist VIII, closes 10/16/92.

**- ADS -**

FREE: “No on Measure 9” buttons. Several styles available. Call Judith Gabriel at ext. 2699, College High.

GREAT GIFTS! Portrait painter coming to stay with us. She is a professional portrait artist who has worked all over the world for decades, doing oil, pastel, or charcoal portraits. She does family, single or whatever you propose. Fascinating woman, good work. I have portfolio for you to examine, if you are interested. Call Judith Gabriel, College High, ext. 2699, or 344-2754.

FOR SALE: Microsoft Word for Windows. Includes disks and manuals in unopened package. \$175 or best offer. Eleanor Herbert, Art/DTC; please call 344-1912.

COMPLETE QUEEN SIZE waterbed with waveless mattress and headboard heater. \$100. Jack Robert, E.FL&S, ext. 2476.

HORSE ANSWER: The question, “Who is the world’s most famous horse of all time?” attracted a field of 16 contenders. Roy Roger’s horse Trigger won by a nose with 13 votes over TV’s Mr. Ed with 12 votes. The legendary Trojan Horse came in third with 10 votes, followed by race horse Man O’ War with 7 votes. On his tail were the mythical Pegasus and the fictional Black Beauty with 6 votes each. Race horse Secretariat got 5 votes. A few lengths back came the fictional Lone Ranger’s Silver with 3 votes, then the race horse Sea Biscuit,\* Alexander the Great’s Bucephalus, and race horse Seattle Slew with 2 votes each. Trailing the pack with 1 vote each were the race horse Citation, the fictional Black stallion, the Australian race horse Phar Lap, the horse Snowball from a Peter, Paul & Mary song, and Robert E. Lee’s Civil War Mount, Traveler. (Thanks, folks, I won the bet. In response to Financial Services’ question, no, I don’t know who the world’s most famous dog is. \*Nominators of Sea Biscuit claim he was a race horse, but if he was, he never won the Derby, Preakness or Triple Crown.)

DEADLINE INFORMATION - Deadline for The Daily is 12-noon of the working day prior to publication on Mondays, Tuesdays, Wednesdays, and Thursdays during fall, winter and spring terms; and Tuesdays during summer term and all term breaks. Submissions must be made in writing and include first and last name, department, and extension number. This information is required to be printed with ads. Ads are free and limited to staff. All items will be published at least once and repeated only if space permits. New items receive priority.



# The Daily

Edited by Joan Aschim

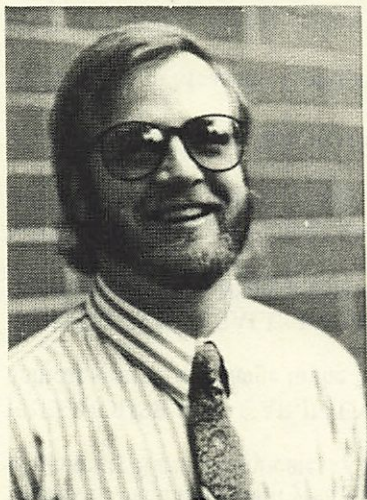
Published for the staff of Lane Community College

747-4501, ext. 2591

Wednesday, October 7, 1992

Second week of fall term

## Thad Cowdin named classified employee of the month



Thad Cowdin has been named Classified Employee of the Month for October. He is the information and computer specialist for Continuing Education. He also provides Macintosh hardware and software support to Mac users campus-wide.

President Jerry Moskus presented the award on October 1. Thad received a certificate, a mug, and an invitation to lunch. His portrait will be posted on the LCCEF bulletin board in the Cafeteria on main campus, and he gets to park in the best spot on main campus.

Nominators said Thad's customary response to a request or problem is, "Let me see what I can do." He is known to work late to meet deadlines, follow through on projects, and exercise good judgment. "He knows most of the instructors and every class and can answer any question," said one co-worker. "He treats everyone as if they were president of the United States," said another.

Thad will note his fifth anniversary with LCC in December.

## New prices set for microcomputers

The college through the Electronics Technician program has been building computers for the campus for more than four years. Over 460 computers have been built to date. The student project furnishes both the 386 and 486 IBM-type computers for direct college use through department ICO purchases. New prices have been set for fall term as noted below:

Unit	Electronics 9/91	Omnitek 9/92	Electronics 9/92
386	\$1,466	\$1,668	\$1,326
486	\$1,746	\$2,009	\$1,746
4-meg upgrade	\$ 160	\$ 162	\$ 140

Call Pam McClelland or Bob Vogel in Electronics at exts. 2459 or 2460 for more information.

## State representative once taught at LCC

State Representative Marie Bell taught dental hygiene at Lane in the 1970s. She's featured in the July 1992 issue of Access, a health publication. She says of her experience at Lane: "We had outstanding students and it was a pleasure to work with such highly motivated individuals." Voters elected Bell to the Oregon House of Representatives in 1990.

## LCC staff can attend two workshops at statewide public school in-service

Eugene 4J is offering a few spaces for LCC staff in the October 9 statewide in-service for public schools. Two workshops available are Basic Principle of Multicultural Education Concepts You Can Apply to the Classroom, and Quincentenary - The Multiple Views of Teaching to Columbus. These classes will help lay the groundwork for necessary paradigm shifts to address multicultural perspectives of curriculum and practice. Contact Julie Baker, ext. 2199, for further information.

## Customer service is in-service topic

Mark your calendars for Thursday, October 29, when Dr. Rick Brinkman of CareerTrack will present a special session on customer service for classified employees and managers at the Emerald Valley Inn. Employees may attend either a morning or afternoon session, and carpooling will be available for employees without their own transportation. More details will be available next week. - Julie Baker, ext. 2199.

## Automotive Technology taking appointments

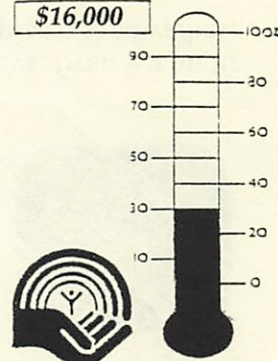
The Automotive Technology program is accepting projects that have instructional value. Autos in need of electrical, automatic transmission and power steering work are needed. Labor is free and provided by students under supervision. To schedule your vehicle for work, call ext. 2388.

## United Way contributions coming in

Staff had contributed \$4,585 to the United Way campaign as of October 2, about 30 percent of the \$16,000 goal. Last year, staff contributed \$15,938. Remember, 84.7 cents out of each dollar you give goes directly to someone in need in Lane County.

For more information on United Way on how to make a donation, contact one of Lane's volunteer coordinators: Lloyd Rain, ext. 2572; Annick Todd, ext. 2253; and Bill Hollingsworth, ext. 2331.

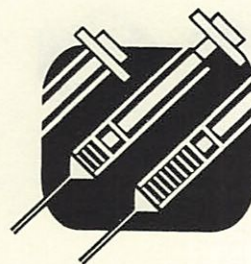
OUR GOAL  
\$16,000





### Special hours announced for staff flu shots

Staff flu shots will be given during the lunch hour, from 12:30-1 p.m., on October 8 and 22 in Student Health. To make the process smoother, please pick up a fee slip and consent form ahead of time, pay your fees, fill out the form, and bring receipt and completed form with you to get your immunization.



### Deli open

The Deli on main campus will be open on Tuesdays, Wednesdays and Thursdays, from 9 a.m. to 1 p.m., beginning October 13. We will be serving espresso and coffee drinks, soups, pizza, sandwiches, salad and some baked goods. Please join us.

### Applicants wanted for leadership institute

Applications to attend the 1993 National Institute for Leadership Development LEADERS training sessions are due by November 13. The dates and locations for 1993 sessions are: March 6-12, Costa Mesa, Calif.; March 20-26, Charlotte, North Carolina; May 15-21, Holyoke, Maine; and June 12-18, Amarillo, Texas. LCC LEADERS must have a master's degree or supervise people or workflow, have a half-time workload or more, choose two mentors, and propose a campus or personal project. A committee of past LCC LEADERS will evaluate and select the 1993 LEADERS. For more information, contact Velma Jesser, ext. 2018.

### Student success strategies conference call for proposals

Proposals for the 1993 Student Success Strategies VIII are due October 26. The theme of the Conference is "Getting Past the Rhetoric." The conference will be Feb. 24, 25 and 26, 1993, at the Red Lion-Jantzen Beach, Portland. This regional conference has an outstanding reputation in providing cutting edge strategies for student success. For information and proposal forms, please call Joyce Kofford, ext. 2315, or stop by the Student Services office and pick one up.

### A Lane student could win \$250

One of our students could win \$250! The Western Association of Student Employment Administrators (WASEA) is sponsoring an exciting contest for students to create a new logo for the association. Any student attending a WASEA member's institution is eligible to enter an original design for a WASEA logo to be used on letterhead and for promotional purposes. The winning logo will earn its designer a \$250 cash award from WASEA. The deadline for entries is December 15, 1992. A panel of judges will choose the winning logo at the WASEA conference in April, and the winner will be notified shortly thereafter. Contact Joan Adams, Job Placement Office, Forum 303, ext. 2326, for entry forms and information.

#### - JOBS -

Communications/Data Specialist, Specialist VIII, closes 10/16/92.

#### - ADS -

TRANSPORTATION DILEMMA: I work in the library evenings till closing. My car is kaput! Busses don't stick around long enough for me to catch one to 30th & Hilyard. Do you leave campus around 10-10:30 p.m.? Are you going my way? Glad to pay gas. Please call Denise Bernard, Library, 6-10 p.m., Mon.-Thurs., ext. 2356. Thank you.

CLEANING CLOSETS? The Infant-Toddler Center and the Preschool can use your outgrown books and toys. Bring to Health 107 and label with your name and address so we can thank you and provide a receipt. We'll find a good home in the community for any duplicates. Call Linda Pompel, Child Care Center Director, ext. 2522, if you have questions.

FREE HOUSE AND CAR IN ENGLAND FOR CHRISTMAS! A couple in Plymouth, England is seeding a two-week home and car straight exchange in the "Northwest" at Christmas. Tom Birkenhead, ext. 2221 or 342-7583.

DISKETTES FOR SALE: 100 used 5-1/4" diskettes from my home collection. Double sided, double density. All newly reformatted 360K. Many are new. Fifteen cents each or \$12 or all. Contact Judy Scher, Computer Services, ext. 2231.

NO MORE MOWIN' FOR MAMA! Fire Chief lawn mower for sale. Briggs & Stratton engine. Used five times. Cost \$180, selling for \$120. Rita Hennessy, Social Science, ext. 2427, or 683-4539.

STUDENT OBOE for sale, in working order. \$250. Rita Hennessy, Social Science, ext. 2427, or 683-4539.

FREE: "No on Measure 9" buttons. Several styles available. Call Judith Gabriel at ext. 2699, College High.

GREAT GIFTS! Portrait painter coming to stay with us. She is a professional portrait artist who has worked all over the world for decades, doing oil, pastel, or charcoal portraits. She does family, single or whatever you propose. Fascinating woman, good work. I have portfolio for you to examine, if you are interested. Call Judith Gabriel, College High, ext. 2699, or 344-2754.

FOR SALE: Microsoft Word for Windows. Includes disks and manuals in unopened package. \$175 or best offer. Eleanor Herbert, Art/DTC; please call 344-1912.

COMPLETE QUEEN SIZE waterbed with waveless mattress and headboard heater. \$100. Jack Robert, E,FL&S, ext. 2476.

DEADLINE INFORMATION - Deadline for The Daily is 12-noon of the working day prior to publication on Mondays, Tuesdays, Wednesdays, and Thursdays during fall, winter and spring terms; and Tuesdays during summer term and all term breaks. Submissions must be made in writing and include first and last name, department, and extension number. This information is required to be printed with ads. Ads are free and limited to staff. All items will be published at least once and repeated only if space permits. New items receive priority.



# The Daily

Edited by Joan Aschim

Published for the staff of Lane Community College

747-4501, ext. 2591

Thursday, October 8, 1992

Second week of fall term

## Focus On Shared Decision Making

President Jerry Moskus has funded a fourth issue of The Daily this year to focus on shared decision making news and discussion. The last issue of each week, on Thursdays, will serve that purpose. The shared decision making issue will carry reports from councils and other groups working on decisions, discourses on shared decision making process, and other relevant topics. Usual Daily items, such as the ads, will be included in this special issue as space permits.

### Excerpts from President Jerry Moskus' welcoming address at the all-staff meeting

#### Change is in the air

Facing yet another year of uncertainty under Measure 5, one thing is certain, President Jerry Moskus said at the all-staff meeting on Sept. 21: change. Both old and new challenges will require us to think of ourselves in new ways.

The president offered background, ideas, challenges and a vision for the future to get staff thinking of Lane as the newest college in Oregon.

#### Measure 5 presents five problems

Colleges across the nation are facing fiscal problems, said Moskus. At Lane we still are waiting to see how Measure 5, the property tax limitation measure, will affect our fiscal future. It presents five major problems.

1. The measure does not require the legislature to fund our new tax base. Taxpayers passed the new tax base in the same 1990 election as Measure 5.
2. The state is not required to maintain grant-in-aid monies. The \$9 million we get each year in grant-in-aid could be reduced by as much as 20 percent in the next biennium.
3. The state has no source of revenue to make up for the lost property tax revenue.
4. The state's replacement revenue obligation expires in 1995.
5. Statewide equalization could result in a loss of funding for Lane because of our past high ratio of revenue-per-FTE made possible by local taxpayer support.

#### Contingency planning

Fiscal uncertainty requires us to plan for possible budget cuts, even though cuts may prove unnecessary. Budget reduction contingency planning for 1993-94 already is underway. Criteria to be used in the planning and a process for the planning were developed by the Board of Education, College Council and others. Information gathering and analysis will be conducted through November. Reduction decisions will be made from December, 1992, through April, 1993, including open hearings and council discussions. Reorganization and restructuring will be planned from May 1993 through April 1994.

In the meantime, the college is looking for ways to save money. Moskus said he was proposing a cost savings incentive program to College Council and the Board.

#### Shared decision making

Moskus said that facing these challenges under shared decision making requires sharing the information upon which decisions will be based. He noted that a staff survey conducted last spring showed an overall rating of shared decision making at Lane at just above midpoint. To improve this, we need to involve more part-time employees and students, conduct more training, and improve communication.

*"...we need to be new people in a new college in order to meet new challenges."*

*"...we don't know when, or to what extent, Measure 5 will affect us."*

*"...Measure 5 allows the legislature to ignore our new voter-approved tax base...."*

*"The fact that the legislature and the state board recognized our new tax base in 1991-92 and this year is no guarantee that they'll continue to do so."*

*"We're likely to have fiscal problems sooner or later, and we'd better face that possibility."*

*"...the Board and College Council have worked together to develop a process...."*

*"I can't promise you that we won't have layoffs in the future, but I can tell you that we're doing everything we can to avoid layoffs. We need everyone we have now, and then some."*

*"It's necessary to share this information, and the worries, because we're trying to implement shared decision making."*



### Shared leadership

The president also called for "shared leadership." The Board of Education must lead us through directional issues. Managers must lead us through directional and fiscal issues and lead their departments well. Faculty must lead us through curricular changes, expansion under limited resources, the use of technology in instruction, our relationship with high schools, and teaching and learning quality. Classified staff must lead us through projects like the mentoring program, and quality and service issues. Students must provide leadership on issues like an LTD bus pass, political action, and improved student communications. Each group must keep an eye on the big picture.

Moskus called for the professional development teams and Student Activities staff to place a priority on leadership training this year.

### How to change

Moskus wants LCC to become the number one community college in the nation. We can do it by continuing a few successful behaviors and by changing a few bad habits. For example, we must continue our service orientation, our caring spirit, our commitment to diversity, our instructional quality, our energy, and our community-centeredness. We must continue our emphases on curricular changes, the use of technology, staff development, and the expansion of public-private partnerships.

But we must change the tendency to solve problems with more money and more people. We must stop building complex bureaucracies. We must discontinue competition and turfdom.

Moskus said highly successful organizations are often too slow to change and Lane must guard against that. He cited the example of the Swiss watchmakers whose industry was destroyed by a new watch they refused to produce, even though it had been invented by one of their own colleagues.

### S-T-E-P-S

To sum up what Lane must do, Moskus invented an acronym spelled STEPS. S is for service to students; T is for technology helping us to work smarter; E is for efficiency and excellence; P is for partnerships; and the final S is for state-level awareness.

### Having faith

Moskus said he's glad to work in a community college in this time of change. Community colleges are historically responsive to change and very innovative. "As long as we keep meeting community needs, I have faith that our needs will be met -- if not now, at least eventually."

### **Nominations due**

Attached to today's Daily is the nomination form for Classified Employee of the Month for November. They're due Oct. 15 to the Office of Community and Economic Development. Please cite actual examples of work and remember attachments to the form cannot be considered. Monthly award winners are considered for the annual award. - Debbie Powers, ext. 2120

### **- ADS -**

DOES ANYONE HAVE AN IMAGE WRITER I printer that could use a new home? If so, please call Eileen Maloy at ext. 2845 or the Social Science office at Ext. 2427.

1965 MUSTANG, 6-cylinder, hardtop. Very good condition, new carpet, paint, etc. Must see. \$5,500. Contact Pat Hansen at ext. 2251 or 689-0479.

FOR SALE: LANGE XLR SKI BOOTS, SIZE 10, (RACING model). Excellent condition and new liners. Sacrifice at \$50 or best offer. Call Joyce, ext. 2632 for Don at 689-2760.

FOR SALE: 6 FT. HIGH OAK ENTERTAINMENT CENTER, \$250. Twin mattress, box spring and frame, good condition, \$60. Call Sue Zink, ext. 2214 or 461-2363.

DAILY INFORMATION - Deadline for The Daily is 12-noon of the working day prior to publication on Mondays, Tuesdays, Wednesdays, and Thursdays. Submissions must be made in writing and include first and last name, department, and extension number. Send to The Daily in intercampus mail or deliver to Admin. 210..

*"The biggest challenge we still face is that of changing the culture -- the values and beliefs -- at LCC."*

*Leaders "must be informed ... visionary ... participatory ... willing to cause change when change is needed."*

*"My goal for LCC is not just to survive, but to thrive. In 1985 LCC was rated the third best community college in the country. In 1995, I want it to be the best community college in the country."*

*"I'm asking that we think of LCC as the newest college in Oregon."*

*"We've washed the moss off our buildings; now let's wash the moss off our curriculum, our services, our policies and procedures."*

*"I'm calling for nothing less than a renaissance."*

*"We're Oregon's on-ramp to opportunity."*

*"...we must find ways to continue as visionary, high quality, accessible institutions, enabling people and communities to realize their full potential."*



# The Daily

Edited by Joan Aschim

Published for the staff of Lane Community College

747-4501, ext. 2591

Monday, October 12, 1992

Third week of fall term

## Meeting calendar

- Administrative Services manager's meeting, Tuesday, October 13, 8:30-10 a.m., PE 205.
- Classified Council meeting, Wednesday, October 14, 3-5 p.m., PE 205.
- Board of Education meeting, Wednesday, October 14, 7:30 p.m., Board Room.
- Community & Economic Development Cabinet meeting, Monday, October 19, 1:30-3:30 p.m., Board Room.

## Board of Education to meet

The LCC Board of Education will meet Wednesday, October 14, at 7:30 p.m. in the Board Room. A closed Executive Session will begin at 6:30 p.m. in Center 107 to discuss the faculty negotiations process.

### Action items:

- furniture bid award
- carpeting request for re-bid
- investment opportunities proposal
- various personnel appointments
- Ballot Measure 9

### Discussion items:

- board policy revision process
- admissions fee
- education reform
- workforce development

The board also will review board planning and the vision statement for Oregon's community colleges. The next meeting will be Nov. 4.

## Lane to receive \$1.9 million student housing settlement

LCC will receive \$1.9 million dollars over the next five years in the settlement of a student housing lawsuit, said Attorney General Charles S. Crookham on Thursday. The suit was filed on behalf of five Oregon colleges against Fred Bender and Phillip McClennan of Hillsboro. The two built student housing as a non-profit corporation but then transferred ownership to for-profit corporations. Locally, they built the Ashlane Apartments in Springfield in 1972. The money is earmarked for student housing and can be used either to provide rent stipends or build new student housing.

The total settlement is for \$10.5 million. Also receiving reimbursement are OSU, SOSC, Mt. Hood C.C., and Clatsop C.C.

## Passwords now required

All mainframe computer logons will be required to have passwords as of Tuesday, October 13. Passwords are for computer security. For more information call Computer Services at ext. 2245.

## Speakers

- Dan Goldrich, UO political science instructor and winner of an annual award for service to the university, will speak on Tuesday, October 13, from 7:15-8:30 p.m. in Center 449 to Jerome Garger's Peace & Conflict Studies class. His topic: US Policy in Central America: Free Trade Issues.
  - Joy Marshall from Lane Fair Share will speak on Wednesday, October 14, from 9-10 a.m. in Center 402 to Steve Candee's State and Local Government class. She will present information and lead a discussion of Ballot Measure 7, the split-roll tax initiative.
  - Tonie Nathan, Libertarian candidate for the state legislature, will speak on Wednesday, October 14, at 1 p.m. and 2 p.m. in Center 402 to Steve Candee's American Government class.
- Guests welcome at all engagements.

## Susan Marshall Company to perform

Instructors, please announce to students that the Susan Marshall Company will perform a free demonstration of *Contenders* on Tuesday, October 13, at 7 p.m. in PE 203. *Contenders* is a work about athletes, competition, and emotions. Company members will be available for a questions after the performance. Please consider this performance as an outside assignment, extra credit or make-up opportunity. - Barbara Delansky, Student Activities, ext. 2337

## Classified Council agenda

Classified Council will meet Wednesday, October 14, from 3-5 p.m. in PE 205. Agenda highlights are an update on the joint classification study from Sue Colvin, classified in-service day, and an air quality update. Facilitator will be Jill Bradley, ext. 2298. Next meeting is October 28.

## Student success strategies conference deadline looms near

Proposals for the 1993 Student Success Strategies VIII are due October 26. "Getting Past the Rhetoric" will be Feb. 24, 25 and 26, 1993, at the Red Lion-Jantzen Beach, Portland. For information and proposal forms, contact Joyce Kofford in Student Services, ext. 2315.



Teleconference is Wednesday

A teleconference on academic and vocational education will be held Wednesday, October 14, from 10:30 a.m. to 12 p.m. in Center 10. Call Judith Gabriel at ext. 2699 to pre-register.

Change of status of dependent children

Your dependent children should be deleted from medical, vision and dental insurance coverage when they no longer qualify as dependents. A dependent child is defined as one who is unmarried, under age 25 (23 for SelectCare and Oregon Dental Service), residing with you, and reported as a dependent on your income tax statement. When you delete children from insurance coverage because they are no longer dependent, the college will offer them the option to self-pay for coverage for a period up to 36 months. If you have questions about the dependent insurance coverage and/or continuation, please call Marie Nelson, Benefits Assistant in Personnel Services, ext. 2590.

Time management workshop reminder

The classified professional development workshop on time management will be held Thursday, October 15, at 3 p.m. in Business 203. Contact Julie Baker, ext. 2199, for more information.

Minority and other students needed for video profiles

High School Relations seeks students representing different academic areas for a new high school marketing video. Minority students especially are needed. We're especially interested in students in general transfer, technical drafting, nursing, dental assisting and hygiene, flight technology, broadcasting, performing arts, business management, and office administration. Students will receive a copy of the video and gain experience working on a fun project.

The students should be outgoing, photogenic, within five years of high school graduation or GED, positive about their LCC experience, and willing to talk to a camera. If you know any students matching this description, please call Shan Titus at ext. 2688, as soon as possible.

Optimism beats illness



Maralyn Shepherd

Maralyn Shepherd has finished radiation and chemotherapy after a ten-month battle with cancer. She is a transcript clerk in Student Records. Co-workers rave about her wonderful humor and optimism throughout the experience. The proof is in the photograph: Maralyn's pictured here wearing a 1940s antique beaded headdress after suffering hair loss.

ADS

WANT TO BUY CABIN TENT in good condition-cheap-need to use in cold weather. Would prefer 10' x 12' or larger so a wood stove could heat it. Call Laura, ext. 2665.

QUEEN MATTRESS, brand new! Great deal: was \$300, now \$180 OBO. 343-8076. Vincent Foster, Counseling, ext. 3030.

DOES ANYONE HAVE AN IMAGEWRITER I printer that could use a new home? If so, please call Eileen Maloy at ext. 2845 or the Social Science office at Ext. 2427.

1965 MUSTANG, 6-cylinder, hardtop. Very good condition, new carpet, paint, etc. Must see. \$5,500. Pat Hansen, ext. 2251 or 689-0479.

FOR SALE: LANGE XLR SKI BOOTS, SIZE 10, (RACING model). Excellent condition and new liners. Sacrifice at \$50 or best offer. Call Joyce, ext. 2632 for Don at 689-2760.

FOR SALE: 6 FT. HIGH OAK ENTERTAINMENT CENTER, \$250. Twin mattress, box spring and frame, good condition, \$60. Call Sue Zink, ext. 2214 or 461-2363.

DAILY INFORMATION - Deadline for The Daily is 12-noon of the working day prior to publication on Mondays, Tuesdays, Wednesdays, and Thursdays. Submissions must be made in writing and include first and last name, department, and extension number. Send to The Daily in intercampus mail or deliver to Admin. 210.

MAIN CAMPUS CAFETERIA WEEK # 3

	MONDAY	TUESDAY	WEDNESDAY	THURSDAY	FRIDAY
SNACK BAR	CHICKEN A LA KING	BEEF CANTONESE	OPEN FACE SANDWICH	BEEF STEW	TURKEY STEW
SOUP	CREAM OF CHICKEN NOODLE BEEF TOMATO RICE CHILI	COOK'S CHOICE CHILI	POLISH SPUD CREOLE CHILI	HOLLYWOOD TURKEY BEAN PASTA CHILI	NEW ENGLAND CLAM CHOWDER COOK'S CHOICE CHILI
MAIN ENTREE	BREAST OF TURKEY FLORENTINE BEEF CANTONESE GRILLED HAM & CHEESE STACKED SANDWICH	SWISS STEAK PORK ALMONDEE' PIZZA	CHICKEN LASAGNA KULBASSY & CABBAGE BBQ BEEF SANDWICH	PORK CHOPS WITH DRESSING & GRAVY BEEF POTATO CASSEROLE TURKEY SWISS	CAPTAIN'S PLATTER SCALLOPED CHICKEN PIZZA BURGER
VEGGIE	COTTAGE POTATO QUICHE	BATTER DIPPED DEEP FRIED VEGGIES WITH CHEESE SAUCE	CORN FRITTERS	BROCCOLI SOUFFLE	CHEESE & SPINACH BITZEN
MINI	BEEF POT PIE	CHICKEN WINGS & RICE	BEEF STEW WITH CORNBREAD	TURKEY STROGANOFF	CRAB OR SHRIMP & BROCCOLI BAKE
VEGETABLE	CARROTS AND PEAS SPINACH	CORN BROCCOLI	CAULIFLOWER FRENCH CUT BEANS	MIXED BEANS BRUSSELS SPROUTS	BEAN MEDLEY HOMINY WITH PIMENTOS



# The Daily

Edited by Joan Aschim

Published for the staff of Lane Community College

747-4501, ext. 2591

Tuesday, October 13, 1992

Third week of fall term

## Logging road under construction

McDougal Brothers logging company is pushing Gonyea Road through to Old Dillard Road on the west side of main campus to create access for a logging operation, says Tom Stinchfield of Lane County Public Works. Campus Services Director Paul Colvin says McDougal Brothers has about 400 acres to the southwest of campus and says it does selective logging. They logged the property on the other side of 30th Avenue recently. Neither spokesperson was aware of any future development plans after logging.

## Managers' forum announced

The first Managers' Forum will be held Friday, October 16, at 8:30 a.m. in Forum 309. Topics for discussion will include the conference of the Northwest Coalition Against Malicious Harassment, upcoming faculty contract negotiations, and a question-answer period on the budget "function information sheets." - Marie Matsen, President's Office, ext. 2313.

## Partnership kicks off with chocolate

A panel of business owners will discuss "Strategies for Success in Challenging Times" at a kick-off event on Thursday, October 15, from 10-11:30 a.m. at the DTC 202, for the Business Workshop Partnership, a joint venture of LCC and the Eugene and Springfield Chambers of Commerce. Panelist Bob Bury will provide some samples of his product, Euphoria Chocolates. Other panelists will be Sherry Berg of Cafe 131, Jerry Blakely of Point Control, and Sue Prichard of Prichard & Evans.

President Jerry Moskus will deliver opening remarks along with Springfield chamber president Phyllis Loobey and Eugene chamber president Gerry Gaydos. The partnership plans to offer six workshops a year of interest to business owners and chamber members. For more information, contact Peg Allison at the Business Development Center, ext. 2923.

## Student jobs open

Disability Services has job openings in tutoring, note taking, reading and work study. Please encourage promising students to apply at Center 213 or call ext. 2150.

## Four ways to help students study better

Students sometimes think they're not smart enough when really they're just using poor study techniques. Here are four things you can do to help:

1. Encourage the student to enroll for one-credit Study Skills mini-courses in effective learning. There are still openings in these courses.
2. Recommend the student read Pauk's How to Study in College or Shepherd's College Study Skills.
3. Point out the 15 Study Tips available in racks near the Testing Office and in Study Skills.
4. Call a Study Skills instructor and ask about help. The department extension is 2439.

## Languages-Across-the-Curriculum

The Northwest International Education Association (NIEA) is proposing to establish a Languages-Across-the-Curriculum (LAC) for member colleges. Funding will be requested from the US Department of Education. The proposal will be for each institution to establish campus task forces consisting of language and non-language faculty. Tasks for the group will include revising some non-language courses and designing a long-term plan for a self-sustaining LAC program. For example, a non-language course could be revised to include some textual or conversational language instruction.

For LCC to participate, representatives must be selected this month. Participants will work with task forces from other campuses, for which they will receive a \$500 stipend. Travel and curriculum expenses will be paid from Faculty Professional Development funds or the participant's department travel funds. Faculty interested in participating in the first of the three years should contact Tom Reimer, ext. 2392, before Friday, October 23.

## Candidate to speak

Lauren S. Holland, candidate for Lane County district judge, will speak Friday, October 16, from 2-3 p.m. in the Board Room. For information, contact Steve Candee at ext. 2188.

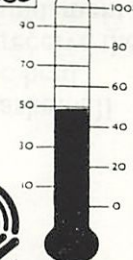
## Two weeks to make goal

Staff contributions to the United Way campaign are mounting and we've reached almost half our goal. However, there are only two weeks remaining in the campaign. If you haven't contributed, please consider making a donation to this worthy cause. Send your completed claim form to your group coordinator or call Lloyd Rain at ext. 2208 if you need information.

Coordinators are Diane Engle in Counseling at ext. 2299 for classified; Annick Todd in ESL at ext. 2253 for faculty; and Lloyd Rain in Purchasing at ext. 2208 for management.

OUR GOAL

\$16,000





### Shootin' Titans Basketball Camp accepting applications

Young boys and girls, eight to 15 years old, can join the LCC championship men's basketball team for the "Shootin' Titans" basketball program. Four clinics from 9:45-11:30 a.m. will be held Saturday mornings on Oct. 24, Oct. 31, Nov. 7 and Nov. 14. Total cost is \$25. Participants receive their own basketball, t-shirt and a pass to the Titan basketball games. Clinics include basketball fundamentals and talks by the staff and team on values, goal setting and the benefits of education. Applications are available in the Athletics Department. Call ext. 2215 for more information.

### AAWCJC seeking nominations

Vice president? Ever thought you could do a better job? Here's your chance! The AAWCJC chapter at Lane is accepting nominations for three vacant positions: (1) Vice president for communications, to coordinate information sharing about workshops, classes, events and services for women and take minutes. (2) Vice president for finance to keep simple financial and membership records. (3) Member at-large to represent an off-campus center on the executive board. If interested, submit your nomination; if you wish to nominate someone else, ask their permission first. Call Lynne Swift in Training & Development at ext. 2503 by October 21 with your nomination or for more information. Current board members are Velma Jesser, president; Lynne Swift, president-elect; Judith Watt, vice president for professional development; and Judith Gabriel, vice president for special projects.

### Conference looks at "Work Now and in the Future"

A conference, "Work Now and in the Future," will be held November 1-3 in Portland. It will address implications for education, business and training. Group registration rates are available if checks are postmarked before October 17; check with Zendra Cates in Financial Services. For more information or a program brochure contact Judith Gabriel at ext. 2699.

### Stress, self-esteem and relationships are topics of Customized Training seminars

LCC Customized Training is offering four special seminars this fall with Dr. Don Mihaleow of Eugene to assist you in personal growth and productivity: Stress at Work: Making It Work for You; Self-Esteem At Work: Making It Work for You; Partner Relationships; and Parent-Adolescent Relations. See page 28 of the fall schedule or call Julie Baker at ext. 2199 for more information.

### Fulbright-Hays Seminars

The Fulbright-Hays Seminars Abroad program is administered by the U.S. Department of Education. Educators from the social sciences, humanities, and foreign languages can participate in short-term summer seminars abroad. Julie Baker, ext. 2199, has further information and applications. The 1993 applications are due November 9, 1992.

### Thanks

A very special thank you to my well wishers for all the cards, letters, phone calls, flowers, meals and celebrations! Your thoughtfulness is appreciated and you have given me enough fond memories to last my lifetime. Have a great year -- your reward is coming. This life of retirement is wonderful. With love, Betty James, retired, Business Dept.



### Season brochure available

Performing Arts season brochure for 1992-93 performances is available from the Box Office from 12-4 p.m. weekdays. Why not consider bringing your group to "A Christmas Carol" this December? Special rates will be offered for groups of 10 or more. Playwright Michael Paller's fresh version affirms such values as self-acceptance, openness, compassion and generosity. Eleven actors perform 40 roles. Call the Box Office at ext. 2202 for more information.

### JOBS

- Secretary, Social Science Dept., Secretary II, closes 10/20/92.
- Administrative Assistant, Math Dept., Administrative Assistant II, closes 10/23/92.

### ADS

LOOKING FOR CONSIGNMENTS is Dottie Ellingson, former Business Development Student, for her Raggmopp Shoppe in Dexter, 38685 Hwy. 50. It's open Thursday-Saturday from 9-6. Lorna Funnell, Cont. Ed., ext. 2906.

PRIME BEEF for sale, cut and wrapped to your specifications, by quarter or half, \$1.39/lb. Bob Way, Coop. Ed., ext. 2203, or 895-2352.

APPLE IIC for sale, 128K, two disk drives, 9" green Apple monitor stand and manual. Accommodates joystick, mouse and modem. Has color output to TV. 80/40 column switch. Applesoft BASIC in ROM. Comes with Gemini 10x dot matrix printer, tractor feed. All cables included. Great for starter computer for kids or adults. \$400. Diane Prokop, Purchasing, ext. 2208.

WANT TO BUY CABIN TENT in good condition-cheap-need to use in cold weather. Would prefer 10' x 12' or larger so a wood stove could heat it. Call Laura, ext. 2665.

QUEEN MATTRESS, brand new! Great deal: was \$300, now \$180 OBO. 343-8076. Vincent Foster, Counseling, ext. 3030.

DAILY INFORMATION - Deadline for The Daily is 12-noon of the working day prior to publication on Mondays, Tuesdays, Wednesdays, and Thursdays. Submissions must be made in writing and include first and last name, department, and extension number. Send to The Daily in intercampus mail or deliver to Admin. 210.



# The Daily

Edited by Joan Aschim

Published for the staff of Lane Community College

747-4501, ext. 2591

Wednesday, October 14, 1992

Third week of fall term

## Computer conversion discussions open

The Computer Implementation Committee meets every Monday morning from 9:30-11 a.m. in the Board Room to discuss progress and priorities of the computer conversion. Anyone with concerns or suggestions or who would like to participate in the process is welcome to attend.

## Visiting faculty program brings Dr. C.T. Vivian to Lane

Dr. C.T. Vivian will be the first participant in Donna Albro's visiting faculty program for Lane. Staff may hear him at two special luncheons on October 21 and 22 from 11:30 a.m. to 1:15 p.m. in the Renaissance Room by making reservations through the Affirmative Action office at ext. 2040.

Vivian is an internationally renowned authority on human relations specializing in racial conflict resolution. He provided counsel to Dr. Martin Luther King, Jr., and has received numerous awards and honors for his contributions to civil rights. He also will be speaking at "To Find Common Ground," the 1992 annual conference of the Northwest Coalition Against Malicious Harassment set for October 23-25 at the UO.

## Members sought for Accreditation Steering Committee

President Moskus is seeking nominations of staff members to serve on the college's Accreditation Steering Committee. The committee will be representative of Lane's staff groups (i.e., faculty, classified, and management), branches, and campus locations. This is a working committee, not an advisory committee. Persons selected must be prepared to make a two-year commitment to the self-study process. If you are interested in being considered, contact your representative on Classified or Faculty Councils, the Management Steering Committee, or Julie Aspinwall-Lamberts (ADM. 117 ext. 2576) by **October 30**. If you would like more information on the accreditation process or the steering committee, please contact Julie at ext. 2576.

## KLCC/KLCO remodels programming schedule

Listeners have noticed a change in programming at KLCC/KLCO. Straight Street has moved up one hour to 6:30 p.m. on Fridays. It is followed by Tropical Beat at 8 p.m. which has been expanded to three hours. New Dimensions has moved up one hour from 9 a.m. to 10 a.m. on Saturdays plus a repeat at 6:30 p.m. on Thursdays. Weekend Edition now airs at 6 a.m. and 8 a.m. on Saturdays and Sundays. Saturday Cafe airs from 11 a.m. to 1 p.m. Mist Covered Mountain airs Sundays at 10 a.m.

No longer on the line-up are Marian McPartland's Piano Jazz, Blues Stage, Afropop Worldwide and Car Talk. These programs were part of the NPR "performance package" which station management decided to discontinue. The staff extends thanks to the many listeners of these programs for their support over the years.

Fall Radiothon begins October 15 with a goal of \$100,000. Your support is appreciated.

## Institutional Advancement reorganization complete

Institutional Advancement has completed a department reorganization prompted in July by the retirement of Larry Romine. Three major personnel changes resulted.

Diane Dann was promoted to director. She was associate director since 1984, after serving as publications manager from 1979-84. She is founder of the Marketing Council. The college has won several national and regional awards for marketing communications under her leadership. Before joining Lane, Dann worked at the University of California at Los Angeles, Washington University in St. Louis, and the City of Chicago. She has a master's in journalism from the UO and a bachelor's from the Medill School of Journalism at Northwestern University.

The position of associate director was eliminated and savings from the reorganization enabled the department to fill the college need for a grants coordinator and to hire a department secretary for the first time in several years.

Sarah LaMaster was hired as grants coordinator on July 1 (see The Daily, Aug. 11) and Angela Miller was hired as secretary on October 1 after a year on the job in a temporary status. She won the post from a field of 50 applicants. Miller has an associate degree from Lane and was named Outstanding Business Student of the Year in 1989-90. She is pursuing a bachelor's degree in business administration through Linfield College with a certificate in marketing.

Susan Sutton continues as publications specialist and Joan Aschim as communications specialist. Julie Baker from the Community and Economic Development branch assists with grants and special projects on a part-time basis.



Angela Miller



### Teleconference: Personal planning for continuous change

"A Personal Survival Plan for Continuous Change," the second part of a two-part live interactive teleconference by internationally known consultant Bill Bridges, will be shown Wednesday, October 28, from 9:45 a.m. to noon, in the Board Room. If you missed program one, "Managing the Human Side of Change," you may check the video out from the Library. The second program will guide viewers in focusing their attention on human factors that are vital in making transition work. The first program received excellent reviews from the participants. Seating is limited to 55. Call Julie Baker at ext. 2199 for your reservation.

### Call for proposals

- Leadership 2000 will be held July 18-21 in Washington D.C. It is the fifth annual international conference on leadership development in community colleges sponsored by the League for Innovation in the Community College and the Community College Leadership Program at the University of Texas at Austin. Proposals for forums or round tables are due December 11 at the League office. For a brochure or more information, contact Larry Warford, League representative, at ext. 2302.
- NISOD International Conference on Teaching Excellence will be held in May, 1993. Proposals for presentations are due in November, 1992. For more information, contact Julie Baker, ext. 2199.
- Leading the Way for Successful Transitions: The Freshman Year Experience will be held in February, 1993. For proposal information, contact Julie Baker at ext. 2199.

### Reminders

- Time management workshop for classified professional development, Thursday, Oct. 15, 3 p.m., Business 203. Contact Julie Baker, ext. 2199.
- To Find Common Ground, Northwest Coalition Against Malicious Harassment conference, Oct. 23-25, UO. Contact Julie Baker, ext. 2199.
- Customer service workshop for classified and management by CareerTrack's Dr. Rick Brinkman, Oct. 29, Emerald Valley Inn. Contact Julie Baker, ext. 2199.
- Student Success Strategies VIII, Feb. 24-26, Portland. Proposals due Oct. 26. Contact Joyce Kofford, ext. 2315.
- National Institute for Leadership Development LEADERS training sessions applications are due by November 13. The dates and locations for 1993 sessions are: March 6-12, Costa Mesa, Calif.; March 20-26, Charlotte, North Carolina; May 15-21, Holyoke, Maine; and June 12-18, Amarillo, Texas. For more information, contact Velma Jesser, ext. 2018.

### Microcomputer prices set

The Electronics Technician program has been building computers for the campus for more than four years. Over 460 computers have been built to date including 386 and 486 IBM-type computers for direct college use through department ICO purchases. New prices for fall term are noted below:

Unit	Electronics 9/91	Omnitek 9/92	Electronics 9/92
386	\$1,466	\$1,668	\$1,326
486	\$1,746	\$2,009	\$1,746
4-meg upgrade	\$ 160	\$ 162	\$ 140

Call Pam McClelland or Bob Vogel in Electronics at exts. 2459 or 2460 for more information.

### ADS

FOR SALE: JC PENNEY 19.2 cu.ft. full-size freezer in perfect condition. White with two quick-freeze shelves. \$140. Gary Rholl, Business, ext. 2221, or 484-0955.

NEEDS HOME: Young, sweet, orange cat, 4-5 months old. Very affectionate and loving. You can hear his purr two rooms away. Dropped in my neighborhood. I can't keep him; my two cats are upset with this new member. Please give him a new home. Sally Meadow, Student Activities, ext. 2336, or 344-0288 eves.

FOR SALE: 1985 TOYOTA TERCEL SR5 wagon, really good condition, AM/FM cassette, 4-wheel drive, new tires, serviced regularly. \$2,990. Also: 48" Yakima rack and two bike trays, \$180. Judith Watt, T&D, ext. 2876, or 683-1530.

FOR SALE: Well-seasoned wood. Alder, fir, hardwood. Diana Reiber, Business, ext. 2221.

ARBONNE! You, women and men, are invited to a free European skin care class and make-over taught by licensed cosmetologist Kimberly Penn. She recently completed an in-service at Sacred Heart Hospital and will be giving a Continuing Education class spring term. She uses only guaranteed and cruelty-free products from a Swiss research-based company. The free class will be Oct. 22 from 7-9 p.m. RSVP at 344-4771 or call Lorna Funnell, Cont. Ed., ext. 2906. Color consults available.

PRIME BEEF for sale, cut and wrapped to your specifications, by quarter or half, \$1.39/lb. Bob Way, Coop. Ed., ext. 2203, or 895-2352.

APPLE IIC for sale, 128K, two disk drives, 9" green Apple monitor stand and manual. Accommodates joystick, mouse and modem. Has color output to TV. 80/40 column switch. Applesoft BASIC in ROM. Comes with Gemini 10x dot matrix printer, tractor feed. All cables included. Great for starter computer for kids or adults. \$400. Diane Prokop, Purchasing, ext. 2208.

DAILY INFORMATION - Deadline for The Daily is 12-noon of the working day prior to publication on Mondays, Tuesdays, Wednesdays, and Thursdays. Submissions must be made in writing and include first and last name, department, and extension number. Send to The Daily in intercampus mail or deliver to Admin. 210.



# The Daily

Edited by Joan Aschim

Published for the staff of Lane Community College

747-4501, ext. 2591

Thursday, October 15, 1992

Third week of fall term

## Focus on Shared Decision Making

President Jerry Moskus funded a fourth issue of The Daily this year to focus on shared decision making news and discussion. The Thursday issue will serve that purpose. It will carry reports from councils and other groups, discourses on shared decision making process, and other relevant topics. Usual Daily items, such as the ads, will be included in this special issue as space permits.

### Disposal of surplus property debated at Council

Approval of a revised Board policy on the sale of surplus property was postponed at the October 6 College Council meeting pending further discussion between vice presidents Dick Hillier and Jim Ellison at the request of President Jerry Moskus. At issue was whether to transfer surplus property to the vice president for administrative services for disposal through a third-party liquidator. Currently, managers often dispose of surplus property by finding users for it on their own. There are advantages and disadvantages to each approach. Moskus also requested specific procedures for advertising surplus property on campus. Hillier will supply information on current procedures to Council.

Also at the meeting, Council asked for a breakdown of expenses from the college's insurance agent of record in order to decide whether to honor the agent's request for additional payment for unanticipated work beyond the contracted agreement. William M. Mercer has asked for an additional \$22,000. Hillier recommended paying half of that but asked Council for guidance on whether to settle with that or to refuse the request entirely.

In other business, Council approved Moskus' investment opportunities proposal to go before the Board. Council also received a handout from its internal chargebacks subcommittee but little time was left for discussion. Reviewed were the October 14 Board meeting agenda and the Institutional Effectiveness Measures Task Force Report.

Council meets again on Tuesday, October 20, from 3-5 p.m. in PE 205.

### Faculty Council takes a stand on Measure 9

Faculty Council discussed Ballot Measure 9 at its October 8 meeting. It was pointed out that the measure does not define "unnatural" and this lack of definition will hamper scientific inquiry. There was consensus that Ballot Measure 9 would have an adverse effect on both teaching and academic freedom at Lane. After going on record as opposing Ballot Measure 9, some concern was expressed about the legality of the action. The issue was presented to college legal counsel, who felt that Faculty Council was within its rights to take a public stand against Ballot Measure 9. - David Sherman, facilitator, Faculty Council.

### David Schiappa named to represent Classified Council

David Schiappa volunteered to be the Classified Council rep to College Council for 1992-93 at the Sept. 23 Classified Council meeting. He also will serve as Classified Council's treasurer for the year and keep track of a \$1,500 budget.

Council heard reports from other councils at the meeting and discussed how to improve its own communications. Suggested were extra editions of The Daily in addition to regular Daily reports, use of E-Mail, publication of quarterly reports in addition to the annual report, distribution of council minutes to all classified staff, use of the union newsletter and bulletin board, request of management to distribute information, or a monthly newsletter for classified, faculty and college councils to send out with The Daily.

Bob Cudmore encouraged attendance at the ongoing job classification study open hearings on job families.

Carrol Barton said the mentoring program had more applicants. She said there is a training tape in the Library for people who'd like to become mentors. Although the program is sponsored by Classified Council, anyone may participate. Sharon Mastin will promote the program at the Downtown Center.

Classified Council met again Oct. 14. See report in next Thursday's issue of The Daily.

### Meeting schedules:

- CED Cabinet, Monday, Oct. 19, 1:30-3:30 p.m., Board Room.
- Administrative Services managers, Tuesday, Oct. 20, 8:30-10 a.m., PE 205.
- College Council, Tuesday, Oct. 20, 3-5 p.m., PE 205.
- Instructional Cabinet, Wednesday, Oct. 21, 1:30-3 p.m., Board Room.
- Student Services directors, Wednesday, Oct. 21, 8:30-11:30 a.m., Admin. 206.
- Faculty Council, Thursday, Oct. 22, 3-4:30 p.m., PE 205.
- Classified Council, Wednesday, Oct. 28, 3-5 p.m., PE 205.
- Legislative Action Team, Thursday, Nov. 5, 7:30-9 a.m., Board Room.
- Task force facilitators: If you want your meetings listed here, call The Daily at ext. 2591.



## JOINT CLASSIFICATION STUDY

**The Joint Review Committee (JRC) reviewed more drafts** of class descriptions at its October 8 meeting. Drafts are reviewed by the eight-member JRC and a group of Subject Matter Experts (SMEs). Additional input is evaluated before the drafts are presented to employees during the open job family meetings.

Open job family meetings will continue to be held. During those meetings, printed copies of the drafts of class descriptions will be reviewed with interested employees and supervisors. Watch The Daily for the meeting schedule.

Please attend the meetings and ask questions. It is very important that all classified employees be involved in the joint classification study for our own good and for the good of the college. If you are unsure which job family best represents the position you hold, please attend any and all open meetings which you believe may apply. - Jane Russell, Chair, Joint Review Committee.

## Tuesday teleconference looks at TQM for colleges

"Total Quality Management in Colleges and Universities: How to Make it Happen," is the topic of a live teleconference on Tuesday, October 20, from 11 a.m. to 12:20 p.m., in Center 10. Across the nation, colleges and universities are adopting and adapting the quality principles pioneered by W. Edward Deming and others that are sweeping American manufacturing and service industries. This teleconference will examine how TQM empowers schools to meet growing demands with fewer resources, and enables them to become more accountable and responsive to their students and their communities. For more information, contact Julie Baker at ext. 2199.

## Unifying Principles

Our college serves its students and staff on the basis of nine unifying principles. Through these principles, Lane endeavors to:

- \* Respect the individual,
- \* Provide quality learning experiences,
- \* Commit to excellence,
- \* Promote a sense of achievement,
- \* Ensure a participatory environment,
- \* Communicate openly,
- \* Manage with goals,
- \* Connect with our community, and
- \* Develop a sense of community ownership.

If you would like a Unifying Principles poster for your classroom or office, contact Julie Aspinwall-Lamberts or Tara Worman in Research, Planning & Evaluation, ext. 2576, Admin. 114.

## Shakespearean actors here Monday

ASLCC has arranged for two actors from the Ashland Shakespearean Festival to perform at Lane on Monday, October 19, at 10 a.m. and 12-noon in Performing Arts Main Theater. An actors' workshop will be held in the Blue Door Theater at 2 p.m. is full.

### ADS

FOR SALE: 80287 ITT BRAND COPROCESSOR for AT computers running between 12 and 16 Mhz. Includes original box, installation instructions, software to test coprocessor operation. \$25. Bill Fletcher, Computer Svcs., ext. 2192.

FOR SALE: JC PENNEY 19.2 cu.ft. full-size freezer in perfect condition. White with two quick-freeze shelves. \$140. Gary Rholl, Business, ext. 2221, or 484-0955.

NEEDS HOME: Young, sweet, orange cat, 4-5 months old. Very affectionate and loving. You can hear his purr two rooms away. Dropped in my neighborhood. I can't keep him; my two cats are upset with this new member. Please give him a new home. Sally Meadow, Student Activities, ext. 2336, or 344-0288 eves.

FOR SALE: 1985 TOYOTA TERCEL SR5 wagon, really good condition, AM/FM cassette, 4-wheel drive, new tires, serviced regularly. \$2,990. Also: 48" Yakima rack and two bike trays, \$180. Judith Watt, T&D, ext. 2876, or 683-1530.

FOR SALE: Well-seasoned wood. Alder, fir, hardwood. Diana Reiber, Business, ext. 2221.

ARBONNE! You, women and men, are invited to a free European skin care class and make-over taught by licensed cosmetologist Kimberly Penn. She recently completed an in-service at Sacred Heart Hospital and will be giving a Continuing Education class spring term. She uses only guaranteed and cruelty-free products from a Swiss research-based company. The free class will be Oct. 22 from 7-9 p.m. RSVP at 344-4771 or call Lorna Funnell, Cont. Ed., ext. 2906. Color consults available.

PRIME BEEF for sale, cut and wrapped to your specifications, by quarter or half, \$1.39/lb. Bob Way, Coop. Ed., ext. 2203, or 895-2352.

APPLE IIC for sale, 128K, two disk drives, 9" green Apple monitor stand and manual. Accommodates joystick, mouse and modem. Has color output to TV. 80/40 column switch. Applesoft BASIC in ROM. Comes with Gemini 10x dot matrix printer, tractor feed. All cables included. Great starter computer. \$400. Diane Prokop, Purchasing, ext. 2208.

DAILY INFORMATION - Deadline for The Daily is 12-noon of the working day prior to publication on Mondays, Tuesdays, Wednesdays, and Thursdays. Submissions must be made in writing and include first and last name, department, and extension number. Send to The Daily in intercampus mail or deliver to Admin. 210.



# The Daily

Edited by Joan Aschim

Published for the staff of Lane Community College

747-4501, ext. 2591

Monday, October 19, 1992

Fourth week of fall term

## Meetings

- CED Cabinet, today, Oct. 19, 1:30-3:30 p.m., Board Room.
- Administrative Services managers, Tuesday, Oct. 20, 8:30-10 a.m., PE 205.
- College Council, Tuesday, Oct. 20, 3-5 p.m., PE 205.
- Student Services directors, Wednesday, Oct. 21, 8:30-11:30 a.m., Admin. 206.
- Instructional Cabinet, Wednesday, Oct. 21, 1:30-3 p.m., Board Room.
- Faculty Council, Thursday, Oct. 22, 3-4:30 p.m., PE 205.

## Today: Students speak out on the debates

Students wishing to view the last presidential debate and be interviewed by the Springfield News for an article about it should visit the Board Room from 4-6 p.m. today, Oct. 19. - Steve Candee.

## College Council agenda

College Council will meet Tuesday, Oct. 20, from 3-5 p.m. in PE 205. On the agenda:

- work session with the board
- request to change council meeting time
- agent-of-record reimbursement request
- investment opportunities proposal committee appointment
- function sheets for governance and administration budget
- part-time faculty task force
- policy revisions: sale of surplus property and contractual authority of the president
- internal chargebacks
- shared decision making evaluation report
- discussion of what business should be considered by council
- duplication task force report on computers
- Facilities Management Committee

## Volunteers needed for conference against malicious harassment

Volunteers are needed for the Northwest Coalition Against Malicious Harassment conference, "To Find Common Ground," on October 23-25 at the UO. Mandatory volunteer orientation sessions will be held Monday, Oct. 19, at 6:30 p.m., and Tuesday, Oct. 20, at 5:30 p.m., both in North Room of Harris Hall, Lane County Public Service Building, 125 E. 8th, Eugene. For information, contact the Affirmative Action office at ext. 2040.

Registration materials to attend the conference are available from Julie Baker, ext. 2199.

## Dr. C.T. Vivian's schedule at Lane

Dr. C.T. Vivian will be the first participant in Lane Community College's visiting faculty program. Staff may hear him at two special luncheons on October 21 and 22 from 11:30 a.m. to 1:15 p.m. in the Renaissance Room by making reservations through the Affirmative Action office at ext. 2040. In addition to the luncheons, Dr. Vivian will make these classroom appearances:

- Monday, Oct. 19, today: 8 a.m., English Comp., Apr. 218; 10:30 a.m., Ethics, Apr. 216.
- Tuesday, Oct. 20, 8 p.m., Peace and Conflict Studies, Center 449 (see below).
- Wednesday, Oct. 21: 9 a.m., Ethics, Apr. 216.
- Thursday, Oct. 22: 8:30 a.m. and 10 a.m., Ethics, Apr. 216; 1:30 p.m., Multicultural Center.

## One presentation will touch on hate crimes and the election

Dr. C.T. Vivian will speak in Jerome Garger's Peace and Conflict Studies class on Tuesday, Oct. 20, from 7:15-8:30 p.m., in Center 449. His topic: "Hate Crimes, White Supremacy, and the Coming Election." Guests are welcome.

## Guatemalan activist to speak

Maria Del Rosario, member of the Committee for Peasant Unity (CUC) in Guatemala, will speak on Tuesday, Oct. 20, from 11:30 a.m. to 12:50 p.m., in Patsey Raney's Women's Studies class in Apr. 211. Rosario is a Maya from Quiche province and will discuss the involvement of indigenous women in the CUC and other grassroots organizations in Guatemala. Guests are welcome.

## DeFazio to visit Lane

US Congressman Peter DeFazio will speak Wednesday, October 21, from 2-3 p.m. in Forum 307 to Steve Candee's American Government class. Guests are welcome.



TQM teleconference is Tuesday

A teleconference, "Total Quality Management in Colleges and Universities: How to Make it Happen," will be held Tuesday, October 20, from 11 a.m. to 12:20 p.m., in Center 10. For more information, contact Julie Baker at ext. 2199.

Candidates to speak

Former Eugene mayoral candidate Greg Evans and current candidate for state representative Freida Smith will speak on Wednesday Oct. 21, from 9-10 a.m. in Center 402 to Steve Candee's State and Local Government class on the difficulties of running for elective office.

Mainframe priorities announced

The highest priority items for the computer conversion currently are (1) class schedule; (2) complete Adult Basic Education system; (3) fourth week reports; (4) research and planning reports including IPEDs, Perkins, etc.; and (5) payroll quarter-to-date.

Coming attractions are global address changes and global social security number changes.

Recently completed are the PERS tape, the teacher list, the DAM report, and administrative withdrawal system.

If you have concerns or suggestions, you're welcome at the Computer Implementation Committee meetings every Monday morning from 9:30-11 a.m. in the Board Room. - Dick Hillier, Vice President for Administrative Services.

Diversity series continues

"Gay, Lesbian and Bi-Sexual Issues" is the topic of the next class in the Issues in Cultural Diversity series. It will be held Tuesday, Oct. 20, from 3-4:30 p.m. and 5:30-7 p.m. in Apr. 223. Staff may register for one credit or audit these classes through the Social Science Department. For more information, contact Vicki Levine at ext. 2074.

Bloodmobile schedules visit

The Lane Memorial Blood Bank mobile unit will be on main campus on Friday, Oct. 23, from 12-3 p.m., outside Student Health. Registration will be in the hallway behind the snack bar. LCC staff and students always have been very supportive of this community effort. Please take an hour to do something important...give blood! Call Student Health at ext. 2665 to make an appointment.

JOBS

Administrative Assistant, Student Support Services/TALN, Administrative Assistant I, closes Oct. 28.

ADS

TINY TABBY, spayed 1-1/2 year old, forever playful, irresistible. Good home only. \$20. Ann Augard, Computer Services, ext. 2865 or 687-8393.

AIRLINE TICKET FOR SALE: Portland-Orlando one-way on or before Dec. 14. \$200. Nancy Peyron, Social Science, ext. 2026, or 342-8309.

LOOKING FOR CABIN TO RENT over spring break for 5 adults, beach or mountains. Bobbie Blackwell, 683-6888. (Business Dept., ext. 2221).

FOR SALE: 80287 ITT BRAND COPROCESSOR for AT computers running between 12 and 16 Mhz. Includes original box, installation instructions, software to test coprocessor operation. \$25. Bill Fletcher, Computer Svcs., ext. 2192.

DAILY INFORMATION - Deadline for The Daily is 12-noon of the working day prior to publication on Mondays, Tuesdays, Wednesdays, and Thursdays. Submissions must be made in writing and include first and last name, department, and extension number. Send to The Daily in intercampus mail or deliver to Admin. 210. All items will be run at least once and more often if space permits. Priority will be given to new items.

MAIN CAMPUS CAFETERIA WEEK # 4

	MONDAY	TUESDAYS	WEDNESDAY	THURSDAY	FRIDAY
SNACK BAR	SCALLOP CHICKEN	HAMBURGER SQUASH CASSEROLE	SPAGHETTI HAM & BROCCOLI CASSEROLE	NUT & RICE LOAF	COOK'S CHOICE
SOUP	CORN BEEF	COOK'S CHOICE	CREAM TURKEY	SWISS CAULIFLOWER	SHRIMP & MUSHROOM
	ITALIAN VEGGIE	CHILI	STEAK BEEF BARLEY	QUICK MINESTRONE	COOK'S CHOICE
MAIN ENTREE	CHILI		CHILI	CHILI	CHILI
	CHICKEN ABOOE	ROAST BEEF	BAKE HAM	ALMOND TURKEY CUTLETS & RICE PILAF	BAKED COD
	HAMBURGER/SQUASH CASSEROLE	SPAGHETTI HAM & BROCCOLI CASSEROLE	CRAB & CHEESE CASSEROLE	BEEF POT PIE	CORN BEEF & CABBAGE
VEGGIE	PATTY MELT	PIZZA	SLOPPY JOE	RUEBEN	TURKEY SWISS SANDWICH
	STUFFED PEPPERS	QUICHE GREEN CHILE PIE	NUT/RICE LOAF	STIR FRY	COTTAGE CHEESE BALL WITH MUSHROOM SAUCE
MINI	ALMOND SHRIMP	CHICKEN RICE CASSEROLE	BEEF SPAGHETTI	SCALLOP POTATOES & HAM	BEEF ENCHILADA
VEGETABLE	PEAS	MEXICAN CORN	SPINACH	ASPARAGUS	BRUSSELS SPROUTS
	CAULIFLOWER	BROCCOLI	YELLOW SQUASH	CARROTS OBRIAN	BEAN MEDLEY



# The Daily

Edited by Joan Aschim

Published for the staff of Lane Community College

747-4501, ext. 2591

Tuesday, October 20, 1992

Fourth week of fall term

## Student Success meeting

The first Student Success meeting will be Thursday, Oct. 29, at 4 p.m. in PE 205. Everyone is welcome. Please contact Evelyn Nagy at ext. 2947 if you have questions.

## Blue Cross major medical prescription drug claims require attachments

Blue Cross/Blue Shield of Oregon major medical prescription drug claims require that you attach a copy of the actual pharmacy receipt to the Major Medical Expense Report. The time limit for filing claims is one year from date of service. You may pick up claim forms from the rack inside the door in Personnel Services. If you have questions, you may call Blue Cross/Blue Shield of Oregon at 342-3317 or Marie Nelson in Personnel at ext. 2590.

## DeFazio to visit Lane

US Congressman Peter DeFazio will speak Wednesday, October 21, from 2-3 p.m. in Forum 307 to Steve Candee's American Government class. Guests are welcome.

## Faculty retreat looks at ways to enhance teaching and learning

"Teaching and learning excellence is the central mission of the college," says Carmel Decroos, chair of the Faculty Professional Development Team (FPDT). With support from administration, the team and other interested faculty held an all-day planning session at the Lost Valley Center on October 10.

The group envisioned Lane in the year 2006, catching the flavor of a large, multi-racial, multi-generational student body with emphasis on cross cultural learning and team teaching across department lines. In this vision there is much self-paced learning and use of interactive technology while teachers stimulate discussion to help students integrate and apply what they learn.

The planning group also discussed ways to support faculty now in 1992. Ideas included opportunities for teachers to interact with each other across departments, sharing innovative teaching ideas, the kind that produce those great "ah-hah!" moments. Plans are in progress to give faculty more recognition for their creativity, and to interview every teacher personally.

## Award given to Delpha "Debbie" Daggett

The Oregon Alliance for Health, Physical Education, Recreation and Dance bestowed its 1992 Honorary Life Membership Award on Delpha "Debbie" Daggett in a ceremony on Oct. 9 in Bend. Life membership is the Alliance's most coveted and respected award.

Daggett has taught health and physical education at Lane since the college opened in 1965. She was born in Oregon and received bachelor's and master's degrees from OSU. She taught and coached at Thurston High in Springfield before joining Lane.

The Alliance credited her with doing much to advance women's sports in Oregon, especially winning a co-sponsorship for a high school track event and securing permission for an 880-yard run for girls. "In 1964, before Title IX, when a quarter mile was the accepted national standard for high school girls, getting permission to double the distance was a blue ribbon performance," said an Alliance member at the ceremony. "It gave Oregon the reputation of being a leader in girls' track and field."

## Hal Davis nominated for award

Construction Technology Instructor Hal Davis has been nominated as a finalist for the Craftsmanship Awards Program of the Southwestern Oregon Chapter of the American Institute of Architects. SWO-AIA selects individuals from the construction industry who have done superior work or who exemplify their craftsmanship, quality work, or service to the industry.

A reception for finalists to announce the awards will be given on Friday, November 6, from 5:30-7:30 p.m., at the Oregon Electric Station. Guests are welcome; please RSVP to Bob Fritsch at 342-4559.

Davis was nominated for exemplary service to the construction trades and for excellence in education. He was nominated by past award winner Carl Horstrup, department chair of the Industrial Technology Programs at Lane.

## United Way campaign reaches two-thirds of goal

Contributions are mounting and we have reached almost two-thirds of our goal. To date, \$10,619 has been contributed toward the \$16,000 target. However, there's only two weeks remaining in the campaign! If you haven't contributed, please consider making a donation to this worthy cause.

Send your completed claim forms to your group coordinator. If you have questions, call Lloyd Rain at ext. 2208. Coordinators are Diane Engle, classified, ext. 2299; Annick Todd, faculty, ext. 2253; and Lloyd Rain, management, ext. 2208.





### **OSPIRG to hold general interest meeting**

The Oregon Student Public Interest Research Group at Lane will hold a general interest meeting on Wednesday, Oct. 21, at 3 p.m. in Forum 308. Organizer Joelle Cacciatore says, "We will explain the various environmental and consumer issues and events that the students will be focusing on through fall term."

### **Registration materials for coalition conference available**

Registration material for the Northwest Coalition Against Malicious Harassment 1992 annual conference, "To Find Common Ground," is available on the counter outside Admin. 209. The conference will be held Oct. 23-25 at the UO. The fee of \$45 per person or \$30 per student covers all conference attendance. - Julie Baker, ext. 2199.

### **More info for education reform roundtable participants**

Participants at the recent House Bill 3565 roundtable on education reform and Oregon's community colleges should contact Laura Tamura in the President's office at ext. 2200. She has additional information that inadvertently was left out of the roundtable packets.

### **Telephone workshop**

Is the telephone your arch enemy but a necessary part of your job? If so, join Joyce Garibay in Business 203 on Thursday, Oct. 22, at 3 p.m., to learn some techniques for gaining control over the telephone and for making your job more enjoyable. - Julie Baker, ext. 2199.

### **Thanks to Steve Candee**

"I want to thank Steve Candee, political science instructor and cooperative education coordinator, for participating in a forum at the Cottage Grove campus on October 9 on current political issues. Sue Girardeau of the League of Women Voters of Lane County also participated. Each presented information about ballot measures and candidates and moderated a lively discussion. Thanks again, Steve, for your commitment and time." - Don Strahan, Director, LCC at Cottage Grove.

### **Thanks to Lorna Funnell**

Lorna Funnell once again this year won cookies and thanks from the coordinator of the Lane County Home and Garden Show. Lorna coordinates Lane's participation in the show which includes mini-classes and displays. DTC agree that Lorna does an excellent job with the show every year.



### **Bloodmobile schedules visit**

The Lane Memorial Blood Bank mobile unit will be on main campus on Friday, Oct. 23, from 12-3 p.m., outside Student Health. Registration will be in the hallway behind the snack bar. LCC staff and students always have been very supportive of this community effort. Please take an hour to do something important...give blood! Call Student Health at ext. 2665 to make an appointment.

### **JOBS**

Administrative Assistant, Student Support Services/TALN, Administrative Assistant I, closes Oct. 28.

### **ADS**

LOW MILES, HIGH LUXURY! 1977 Ford Thunderbird for sale. Champagne pink exterior, with landau style roof and burgundy leather interior. Power everything--steering, brakes, windows, driver's seat, cruise control, A/C, clock, 4-speaker stereo, intermittent wipers, tilt wheel, the works! 85,000 original miles and less than 10,000 miles on tires, belts, hoses, water pump, shocks, muffler and brakes. Asking \$2,150. Sarah LaMaster, IA, ext. 2312, or 484-4913.

FOR SALE: Well-seasoned hardwood. Diana Reiber, Business, ext. 2221.

LIVE AT THE FILLMORE! Starring Arbonne with the latest hits: "Guaranteed!" "Cruelty-Free!" "From Switzerland With Love!" "Chemical-Free!" "No Mineral Oil This Time!" And much, much more.... See you 7-9 p.m. on Thursday, Oct. 22, at 936 Fillmore off W. 11th. Call 344-4771 for directions. A Kimberly Penn-Lorna Funnell Production. (Lorna Funnell, Cont. Ed., ext. 2906).

HEWLETT-PACKARD ColorPro 8-pen plotter, mint condition (used less than 5 hours). Package includes serial cable, power supply, 40 pens (most unopened), and 100 sheets of transparency film. Perfect for CAD or presentation graphics. \$600. 344-8639. (Steven Myers, Math, ext. 2402).

TINY TABBY, spayed 1-1/2 year old, forever playful, irresistible. Good home only. \$20. Ann Augard, Computer Services, ext. 2865 or 687-8393.

AIRLINE TICKET FOR SALE: Portland-Orlando one-way on or before Dec. 14. \$200. Nancy Peyron, Social Science, ext. 2026, or 342-8309.

LOOKING FOR CABIN TO RENT over spring break for 5 adults, beach or mountains. Bobbie Blackwell, 683-6888. (Business Dept., ext. 2221).

DAILY INFORMATION - Deadline for The Daily is 12-noon of the working day prior to publication on Mondays, Tuesdays, Wednesdays, and Thursdays. Submissions must be made in writing and include first and last name, department, and extension number. Send to The Daily in intercampus mail or deliver to Admin. 210. All items will be run at least once and more often if space permits. Priority will be given to new items.



# The Daily

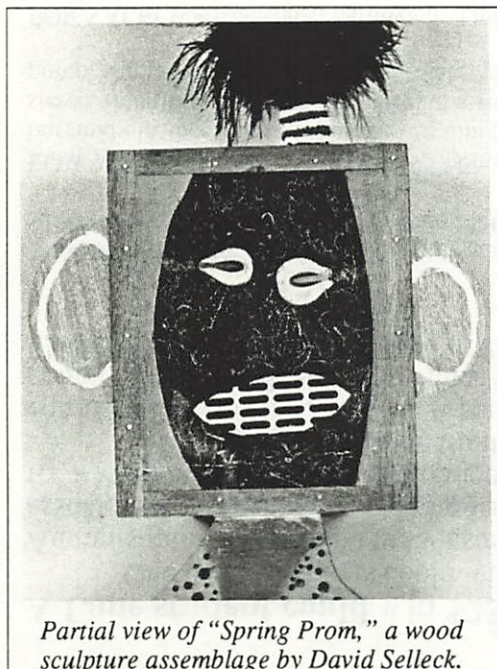
Edited by Joan Aschim

Published for the staff of Lane Community College

747-4501, ext. 2591

Wednesday, October 21, 1992

Fourth week of fall term



*Partial view of "Spring Prom," a wood sculpture assemblage by David Selleck.*

## Portland artist to show at Lane

David Selleck, a Portland painter and sculptor, will show at the Art Department Gallery from Oct. 26 through Nov. 13. He will lecture on his work on opening day at 1 p.m. in the gallery. A reception will follow at 2:30 p.m.

Selleck has shown his work at 32 exhibitions since 1975 from Oregon to New York. Galleries have included the Blackfish Gallery in Portland, the Jackson Street Gallery in Seattle, the San Jose Institute of Contemporary Art in San Jose, the Laura Musser Art Gallery in Muscatine, Iowa, the Illinois Institute of Technology gallery in Chicago, the Des Moines Art Center in Des Moines, and the Hawthorne Gallery in Saratoga Springs, New York. He has shown at LCC before, once in the 1991 Oregon Small Scale Sculpture Invitational and in the 1987 Group Show.

He has taught drawing at Mt. Hood Community College, Lewis & Clark College, Portland Community College, and the Creative Arts Community in Menucha, Oregon.

Selleck's lecture is sponsored by ASLCC. The Art Department Gallery is open Monday through Thursday from 8 a.m. to 10 p.m. and Friday from 8 a.m. to 5 p.m.

## Customer service workshop is for classified and management staff

Mark your calendars for Thursday, October 29, when Dr. Rick Brinkman of CareerTrack will present a special session on customer service for classified and management staff at the Emerald Valley Inn. Employees may attend either a morning or afternoon session, and carpooling will be available for employees without their own transportation. For more information, contact Julie Baker, ext. 2199.

## Annual name change procedure underway

Proposed name changes for departments and programs must be submitted to the president by the appropriate vice president by November 16. Recommendations on the proposals will be made by December 14. Approved name changes will be published in The Daily by February 8. However, new names can't officially be used on letterhead or for other purposes until they're published in the college catalog about the first of May. For more information, contact your vice president.

## Teacher list is confidential

The teacher list which has student name, telephone and social security number is confidential and cannot be released to anyone except the student or the holder of a release signed by the student. These lists should not be passed around in class as sign-up sheets nor disposed of in ordinary trash.

## Facilities Management Committee to meet

The Facilities Management Committee will meet Thursday, Oct. 22, from 3-5 p.m. in the Board Room. Topics on the agenda include special parking requests, Math remodel, cover for Infant/Toddler Center play area, and committee procedures. Interested staff and students are invited to attend.

## Resource Development Group to meet

The Resource Development Group will meet Monday, Oct. 26, from 11 a.m. - 12 noon in the Board Room. Guests are welcome.

## What's your specialty?

Many Lane employees have invaluable, little known and untapped skills, experiences and expertise. The International/Intercultural Committee, Faculty Professional Development Team, and Institutional Advancement are gathering information for a Lane Community College all-staff resource guide. If enough people respond, the guide will be printed and available to staff and departments. Please fill out the form attached to today's Daily and return it to Linda Myers in Cooperative Education by Nov. 4. Thanks!

## Multi-Cultural Center hosts social hour

The Multi-Cultural Center invites staff to drop by the center's weekly social hour on Thursdays at 1:30 in Center 409.





### **Gamma rays spotlight opening night at Performing Arts**

"The Effect of Gamma Rays on Man-in-the-Moon Marigolds," an award-winning play by Paul Zindel, opens Performing Arts 1992-93 theater season on October 30 at 8 p.m. in the Blue Door Theater. The play also will show Oct. 31 and Nov. 6 and 7. Tickets are \$4.

For tickets, call the Box Office between 12-4 p.m. Monday through Friday at ext. 2202.

### **Teleconference looks at student and workforce success**

"Learning to Learn: Proven Strategies for Student and Workforce Success" is the topic of a live interactive video conference to be shown Tuesday, Oct. 27, from 1-2:30 p.m. in Center 10. Learning To Learn (LTL) is a system of reasoning strategies which has been researched and developed over a period of 25 years. LTL has been recommended for national dissemination by the US Dept. of Education based on externally-validated studies. These studies showed that LTL has significant, long-term effects on college students' grade point averages and retention through graduation. For more information, contact Julie Baker at ext. 2199.

### **Silent Auction scheduled**

The AAWCJC Holiday Silent Auction will be held Nov. 17 from 5:30-7:30 p.m. at Judith Watt's house. Mark your calendars and RSVP to Judith in Training & Development at ext. 2223. Watch for further updates in The Daily.

### **Thanks to Father Dieringer and Carl Horstrup**

Health and PE would like to thank Campus Ministries' Father Jim Dieringer for construction of 50 aerobic step benches on very quick notice. He and his students made the benches over a weekend so classes could use them by the second week of the term. Thanks also to Carl Horstrup of Industrial Technology Programs for the use of shop and equipment for this emergency. Our students and staff appreciate your cooperation and help. - Bob Creed, Health and Physical Education Dept.

### **Continuing Education instructor earns literary distinction**

Continuing Education instructor Jan Jett, who teaches "Follow Me Please--Tour Escorting" in the spring, placed in the top 100 articles in an annual contest for the November issue of Writer's Digest magazine (see page 40). Jan also teaches at LCC at Florence. She's working on a book for tour escorts.

### **Road closure announced**

Eldon Shafer Drive, the east entrance to main campus, will be closed on Nov. 7 from 9 a.m. to 3 p.m. for the OSAA High School State Cross Country Meet at Lane. Gonyea Road, the west entrance, will remain open; however, ticket sales will be ongoing at that site. If you're working or attending class that day, please notify the ticket sellers at the entrance. Thanks for your patience and cooperation.

### **A Lane student could win \$250**

One of our students could win \$250! The Western Association of Student Employment Administrators (WASEA) is sponsoring an exciting contest for students to create a new logo for the association. Any student attending a WASEA member institution is eligible to enter an original design for a WASEA logo to be used on letterhead and for promotional purposes.

The winning logo will earn its designer a \$250 cash award from WASEA. The deadline for entries is December 15, 1992. A panel of judges will choose the winning logo at the WASEA conference in April, and the winner will be notified shortly thereafter. Contact Joan Adams, Job Placement Office, Forum 303, ext. 2326, for entry forms and information.

#### **ADS**

TWO FOR THE PRICE OF ONE! 1977 and 1978 Toyota Corona wagons, fair to good condition, both run but need TLC. \$1000 for both; \$500 each; OBO. Pam McClelland, Electronics, ext. 2459, or 726-7977.

LOW MILES, HIGH LUXURY! 1977 Ford Thunderbird for sale. Champagne pink exterior, with landau style roof and burgundy leather interior. Power everything--steering, brakes, windows, driver's seat, cruise control, A/C, clock, 4-speaker stereo, intermittent wipers, tilt wheel, the works! 85,000 original miles and less than 10,000 miles on tires, belts, hoses, water pump, shocks, muffler and brakes. Asking \$2,150. Sarah LaMaster, IA, ext. 2312, or 484-4913.

FOR SALE: Well-seasoned hardwood. Diana Reiber, Business, ext. 2221.

LIVE AT THE FILLMORE! Starring Arbonne with the latest hits: "Guaranteed!" "Cruelty-Free!" "From Switzerland With Love!" "Chemical-Free!" "No Mineral Oil This Time!" And much, much more.... See you 7-9 p.m. on Thursday, Oct. 22, at 936 Fillmore off W. 11th. Call 344-4771 for directions. A Kimberly Penn-Lorna Funnell Production. (Lorna Funnell, Cont. Ed., ext. 2906).

HEWLETT-PACKARD ColorPro 8-pen plotter, mint condition (used less than 5 hours). Package includes serial cable, power supply, 40 pens (most unopened), and 100 sheets of transparency film. Perfect for CAD or presentation graphics. \$600. 344-8639. (Steven Myers, Math, ext. 2402).

DAILY INFORMATION - Deadline for The Daily is 12-noon of the working day prior to publication on Mondays, Tuesdays, Wednesdays, and Thursdays. Submissions must be made in writing and include first and last name, department, and extension number. Send to The Daily in intercampus mail or deliver to Admin. 210. All items will be run at least once and more often if space permits. Priority will be given to new items.



# The Daily

Edited by Joan Aschim

Published for the staff of Lane Community College

747-4501, ext. 2591

Thursday, October 22, 1992

Fourth week of fall term

## Board of Education opposes Measure 9

The LCC Board of Education opposed **Measure 9** with a six-to-nothing vote and no discussion at its Oct. 14 meeting. Board Member Cindy Weeldreyer was absent. Measure 9 is the anti-homosexual initiative on the Oregon ballot.

An **admissions fee** was discussed but will not be implemented at this time for economic and access reasons, the board decided. Board Members Chuck Ivey and Larry Mann argued that an admissions fee would create needed revenue. The vice presidents and last year's tuition committee have both opposed an admissions fee. The board may revisit the issue in the future.

**President Moskus' Investment Opportunities Proposal** received a five-to-one vote of approval. Larry Mann opposed the idea. The president is now free to appoint a committee to set the program in motion. The program will use board contingency funds to provide financial incentives to departments to come up with cost-saving ideas for the college.

The **consent agenda** passed unanimously with no discussion. It included bid awards to replace various aging chairs and tables, and a recommendation to rebid carpeting of various floors. Also on the consent agenda was Dr. Carol Lynn Morse's appointment as a half-time coordinator and instructor/counselor in the Counseling Department.

**Revisions to the board policy handbook** were distributed. The board may call a work session or series of work sessions to complete their review.

Due to lack of time, discussions of a statewide **community college vision statement** and Oregon's **workforce development system** were postponed.

During statements from the audience, ASLCC President Bill Hollingsworth and student Frankie Ortega presented their opposing views on the **United States Student Association**. USSA is a student lobby at the state and federal level. The Community Colleges of Oregon Student Association Council has withdrawn from USSA. LCC is a member of that council.

The board meets again Nov. 4.

## Board, council and branch meetings

- Faculty Council, Thursday, Oct. 22 (today), 3-4:30 p.m., PE 205
- College Council, Tuesday, Oct. 27, 3-5 p.m., Board Room
- Classified Council, Wednesday, Oct. 28, 3-5 p.m., PE 205
- Board of Education, Wednesday, Nov. 4, 7:30 p.m., Board Room
- Managers' Forum, Friday, Nov. 6, 8:30-10 a.m., Forum 309
- Administrative Services managers, Tuesday, Oct. 27, 8:30-10 a.m.,
- Community & Economic Development Cabinet and Instructional Cabinet Joint Meeting, Wednesday, Oct. 28, 1:30-3:30 p.m., Board Room
- Community & Economic Development Cabinet, Monday, Nov. 2, 1:30-3:30 p.m., Board Room
- Instructional Cabinet, Wednesday, Nov. 4, 1:30-3 p.m., Board Room
- Student Services directors, Wednesday, Nov. 4, 9-10:30 a.m., Admin. 206

## Classified Council hears joint classification study update

Personnel Director Sue Colvin told Classified Council at its Oct. 14 meeting that 208 classified job description questionnaire's had been reviewed to date for the joint classification study. So far, these had led to 71 class description drafts. Four open hearings to discuss job class specifications have been held to date. Colvin emphasized that the job families discussed at the hearings are just "study groups" that "may or may not be job families." "We're taking a separate look at our system for setting up job families," she said, and the groupings discussed so far are not cast in stone. Colvin advised employees and supervisors to attend any and all hearings where they felt their job might be or should be discussed.

She explained that individual positions get grouped into a classification, and that classifications get grouped into job families. Under the LCCEF contract, bumping occurs within job families. Colvin said a system of job families should be developed by Christmas break and that positions should be allocated into families by the end of January. Appeals of position placements would begin in February, and then wage proposals would be presented to the classified union for negotiation. The entire reclassification needs to be complete by April in the event of layoffs due to possible budget cuts resulting from Measure 5. If layoffs become necessary, they would occur in July and notice would be given in May. Anyone with questions should attend a hearing or call Sue Colvin, Deb Andereggen, or Joan English in Personnel.

In other business, council heard reports from other groups. They also heard a report that communications between Library staff and Campus Services regarding air quality problems had improved. Council also reviewed a request from the college accreditation committee to recruit five classified staff to serve. Gloria Jarvis will accept nominations and forward them to that committee.

The Thursday issue of The Daily focuses on shared decision making news, including reports of council meetings. Usual Daily items are included as space permits.



## College Council concerned about faculty's future

College Council met Oct. 20 and considered a request from Faculty Council to appoint a **task force to study the issues of part-time faculty**. Discussion revealed the need for a broader examination. "We're really talking about the future of our faculty," said President Moskus. The ratio of full-time to part-time faculty, for instance, is affected by statewide equalization, access, retirements, technology, and other changes. Moskus will draft a task force plan and present it at the next meeting.

Council considered **whether to reimburse the college insurance agent** of record, William M. Mercer, for additional work not anticipated by either the company or the college. Mercer has requested approximately \$22,000. After discussion of the request and related insurance issues, council reached consensus to pay half that amount. Council felt that paying half would acknowledge the responsibility of both parties for the situation. Payment also will resolve this single issue. Still under discussion are the related issues of method of payment and consolidation of coverage.

In other business, council considered changing its **meeting time** in response to a request from ASLCC, which meets at the same time. However, proposed changes seemed to create as many conflicts as they resolved. It was pointed out that College Council is the chief forum of shared decision making at Lane and consistency in its meeting time is important. Council decided to ask ASLCC to make the change instead.

Some nominations were made to a committee to implement the president's **Investment Opportunities Proposal**. The proposal has been approved in concept by the Board of Education. Recommended committee composition includes two reps each from the four college branches, one from the President's Office, and two students. This membership should account for two faculty, two managers and two classified staff. Moskus said he will have to appoint members if enough nominations aren't made soon. The program must get underway to be effective in this budget year.

Council meets again next week on Tuesday, Oct. 27, from 3-5 p.m., in the Board Room. The meeting is a week earlier than usual due to the Board of Education moving up its November meeting one week from the 11th to the 4th. Already on the agenda for the Oct. 27 council meeting is discussion of the 1992-93 College Plan, the college safety policy, and the computer conversion.

## Video shoot in progress

Westcom Creative Group will be shooting the new high school marketing video on campus all day Monday, Oct. 26, and additional days to be announced. When possible, we will call ahead for approval from instructors or department heads. However, bear with us if schedule changes preclude advance notice. Westcom is adept at taping with little disruption to classes. Thank you for your cooperation. - Shan Titus, High School Relations, ext. 2688.

## Limited service

Training and Development staff will attend in-service today and tomorrow. The front desk and telephone will be covered but no regular business will be conducted. The resource center and computer lab will be closed. - Audrey McAtee, T&D, ext. 2502.

## Bloodmobile arrives tomorrow

The Lane Memorial Blood Bank mobile unit will be on main campus on Friday, Oct. 23, from 12-3 p.m., outside Student Health. Registration will be in the hallway behind the snack bar. Call Student Health at ext. 2665 to make an appointment.

## Shootin' Titans Basketball Camp starts Saturday

Young boys and girls, eight to 15 years old, can join the LCC championship men's basketball team for the "Shootin' Titans" basketball program. Four clinics from 9:45-11:30 a.m. will be held Saturday mornings on Oct. 24, Oct. 31, Nov. 7 and Nov. 14. Total cost is \$25. Participants receive their own basketball, t-shirt and a pass to the Titan basketball games. Call ext. 2215 for more information.

## JOBS

Project Assistant, Women's Program, Aide III, closes 10/29.

## ADS

FOR SALE: APPLE OneScanner for Macintosh computers. Add high-quality black & white graphics and images to your documents. Compatible with printers from Apple StyleWriter to professional image-setters. New, never used, still in the box. \$850. John Lloyd, T&D, ext. 2223 or 683-1341.

YOU CAN BRING JOY to the hearts of the less fortunate with your used but clean and usable clothing and toys. Clothing for men and children and toys/games for older children especially are needed. They will be given to anyone in need at the Helping Hand Room Christmas Open House on Dec. 2-3. Please call Audrey McAtee, T&D, ext. 2502, if you have anything to donate or would like more information.

1966 LA SABRE BUICK 4-door, runs, makes a great second car, \$350 or make offer. Mary Hedges, T&D, ext. 2028, or 746-7783 after 6 p.m.

TWO FOR THE PRICE OF ONE! 1977 and 1978 Toyota Corona wagons, fair to good condition, both run but need TLC. \$1000 for both; \$500 each; OBO. Pam McClelland, Electronics, ext. 2459, or 726-7977.

DAILY INFORMATION - Deadline for The Daily is 12-noon of the working day prior to publication on Mondays, Tuesdays, Wednesdays, and Thursdays. Submissions must be made in writing and include first and last name, department, and extension number. Send to The Daily in intercampus mail or deliver to Admin. 210. All items will be run at least once and more often if space permits. Priority will be given to new items.



# The Daily

Edited by Joan Aschim

Published for the staff of Lane Community College

747-4501, ext. 2591

Monday, October 26, 1992

Fifth week of fall term

## This week at a glance

- David Selleck exhibit, 1 p.m. lecture and 2:30 p.m. reception, Oct. 26, Art Department Gallery.
- Administrative Services managers meeting, Oct. 27, 8:30-10 a.m., PE 205.
- College Council meeting, Oct. 27, 3-5 p.m., Board Room.
- Community & Economic Development Cabinet/Instructional Cabinet meeting, Oct. 28, 1:30-3:30 p.m., Board Room.
- Classified Council, Oct. 28, 3-5 p.m., PE 205.
- Multi-Cultural Center Social Hour, Oct. 29, 1:30 p.m., Center 409.
- The Effect of Gamma Rays on Man-in-the-Moon Marigolds, opens Oct. 30, 8 p.m., Blue Door Theater; Box Office ext. 2202, 12-4 p.m.

## Deadline arrives in budget reduction planning process

The 1993-94 budget function sheets are due to the President's Office on Friday, Oct. 30. The sheets are part of a plan to prepare for possible budget cuts driven by Measure 5 and other uncertainties in Lane's future. The planning schedule was published in The Daily on July 21. Here it is again:

Sept. 22	all-manager meeting to review materials and process
Sept. 14-18	distribution of finalized materials and forms to college units
Oct. 30	college unit information returned to President's Office
Nov. 13	initial analysis completed by Executive Cabinet
Nov. 30	final analysis and initial recommendations completed by Executive Cabinet
Dec. 1-11	hearings and discussions with councils, ASLCC, branches
Jan. 6	Executive Cabinet recommendations prepared

## College Council agenda

College Council will meet Tuesday, Oct. 27, from 3-5 p.m. in the Board Room. Meetings are open to all interested staff. Agenda highlights:

- review of Nov. 4 Board of Education tentative agenda
- policy revisions: sale of surplus property and contractual authority of the president
- college plan
- part-time faculty task force
- impact of computer conversion on instruction
- internal chargebacks
- shared decision making evaluation report
- discussion of what items should be considered by council
- duplication task force reports on computers
- Facilities Management Committee

College Council meets again Tuesday, Nov. 17, 3-5 p.m., Board Room.

## Diversity series continues

"Mixed Race Issues in American Society" is the topic of the next class in the Issues in Cultural Diversity seminar series on Oct. 27 from 3-4:30 p.m. and 5:30-7 p.m. in Apr. 223. Staff may register for credit or audit through the Social Science Department. For details, call Vicki Levine at ext. 2074.

## No on 9 video and discussion scheduled

The No on 9 campaign video, Fighting for our Lives, will be shown Wednesday, Oct. 28, from 12-1 p.m. in the Board Room. Discussion will follow. Bring your lunch. For more information call Maxine Scates in English, Foreign Language & Speech at ext. 2417.

## At-risk teens begin first term at Lane

Thirteen at-risk teenagers have begun the Bridges program at Lane. Bridges helps young adults ages 16 to 21 make the transition to college. The program was designed for but is not limited to teen parents. Students participate in a transitional term which includes credit classes as well as sessions which explore careers and build college success. Bridges is sponsored by LCC Training & Development and Catholic Community Services. For more information, call Betty Young or Jeannie Peterson at ext. 2860.

## Young disabled students sought for focus groups

Disabled students under age 25 can earn \$10 per hour participating in a focus group. Two groups will be gathered on Wednesday, Oct. 28. Interested students should contact Petermichael Vincent, Disabled Student Services, ext. 2150.

## Learning and workforce teleconference is Tuesday

"Learning to Learn: Proven Strategies for Student and Workforce Success," a teleconference, will be held Tuesday, Oct. 27, from 1-2:30 p.m. in Center 10. Call Julie Baker at ext. 2199.



Certain programs winning more federal funding

Several programs at community colleges are enjoying federal grant funding increases. For fiscal year 1993, funding for tech-prep vocational education is up 15 percent to \$104.1 million; for national demonstration programs for tech-prep, up 28 percent to \$16.7 million; for state grants for adult education, up 8 percent to \$254.6 million; and, for the Fund for the Improvement of Postsecondary Education (FIPSE), up 78 percent to \$26.7 million.

Among new priorities, FIPSE will provide \$5 million to recruit and train students for careers in early childhood development, or counseling of young children and their caregivers who have been affected by community violence. Some special competitions will include campus climate and culture, expanding minority Ph.D. and faculty development, and evaluation and dissemination activities. Source: Aid for Education Report, Oct. 7, 1992, and Federal Register, Sept. 21, 1992.

Planning for continuous change teleconference is Wednesday

"A Personal Survival Plan for Continuous Change," a teleconference with internationally known consultant Bill Bridges, will be held Wednesday, Oct. 28, from 9:45 a.m. to noon, in the Board Room. Call Julie Baker at ext. 2199 for your reservation.

Want to study abroad?

Faculty interested in studying abroad can find out about individual study tours from Julie Baker at ext. 2199.

JOBS

Project Assistant, Women's Program, Aide III, closes 10/29.

ADS

POLITICAL SCIENCE INSTRUCTOR STEVE CANDEE is singing and playing guitar at Original Joe's on Thursdays from 7-11 p.m. (Joan Aschim, IA, ext. 2591.)

LARGE DOG HOUSE for sale, home made, wooden, shingle roof, double layer floor, \$50 OBO. Jeannie Peterson, T&D, ext. 2860.

FOR SALE: TWO 13-INCH FIRESTONE STUDDED TIRES mounted on wheels, \$90. Two 13-inch studed tires, \$60. Velma Jesser, ext. 2018 (office hours 11-12 MWF, 9-10 UH) or 683-1070.

NOW TAKING ORDERS for Entertainment '93 books. They are filled with coupons and special offers for restaurants and entertainment all over the mid-Willamette Valley. This year's book is expanded again but sells for the same value of \$30. Your purchase through me will help the Greater Eugene Chorus of Sweet Adelines, Int. Order now: the Chorus earns extra credit for pre-sold orders, and you can use the book immediately. Gloria Jarvis, Financial Svcs., ext. 2604.

FOR SALE: APPLE OneScanner for Macintosh computers. Add high-quality black & white graphics and images to your documents. Compatible with printers from Apple StyleWriter to professional image-setters. New, never used, still in the box. \$850. John Lloyd, T&D, ext. 2223 or 683-1341.

YOU CAN BRING JOY to the hearts of the less fortunate with your used but clean and usable clothing and toys. Clothing for men and children and toys/games for older children especially are needed. They will be given to anyone in need at the Helping Hand Room Christmas Open House on Dec. 2-3. Please call Audrey McAtee, T&D, ext. 2502, if you have anything to donate or would like more information.

1966 LA SABRE BUICK 4-door, runs, makes a great second car, \$350 or make offer. Mary Hedges, T&D, ext. 2028, or 746-7783 after 6 p.m.

DAILY INFORMATION - Deadline for The Daily is 12-noon of the working day prior to publication on Mondays, Tuesdays, Wednesdays, and Thursdays. Submissions must be made in writing and include first and last name, department, and extension number. Send to The Daily in intercampus mail or deliver to Admin. 210. All items will be run at least once and more often if space permits. Priority will be given to new items.

MAIN CAMPUS CAFETERIA WEEK # 5

	MONDAY	TUESDAY	WEDNESDAY	THURSDAY	FRIDAY
SNACK BAR	COOK'S CHOICE	PEPPER STEAK	PORK STEW	SWEET & SOUR CHICKEN	VEGGIE LASAGNA
SOUP	CREAM BROCCOLI	COOK'S CHOICE	LEAK SOUP	SPLIT PEAS	MED. CHOWDER
	HAM AND BEAN	CHILI	BLACK BEAN	BEEF NOODLE	COOK'S CHOICE
	CHILI		CHILI	CHILI	CHILI
MAIN ENTREE	PORK CHOP	BAKED BUTTERMILK CHICKEN	VEAL ALFREDO	CRANBERRY GLAZED SPARE RIBS	FISH AND CHIPS
	ORIENTAL JAMBALAYA	PORK STEW	SWEET & SOUR PORK	CHICKEN NOODLE BAKED	ALL AMERICAN GOULASH
	3 CHEESE SANDWICH	PIZZA	FRENCH DIP	BEEF POCKETS	SEASIDE SUB
VEGGIE	TOMATOES & CHEESE QUICHE	GARDEN PIZZA, GREEN PEPPERS, MUSHROOM, ONIONS	ZUCCHINI RICE CASSEROLE	VEGGIE LASAGNA	CABBAGE RICE PANCAKE WITH CHEESE SAUCE
MINI	PEPPER STEAK	SWEDISH MEATBALL	PORK STIR FRY	TURKEY MUSHROOM & RICE	CHICKEN CURRY RICE CASSEROLE
VEGETABLE	PEAS & MUSHROOMS	MEXICAN CORN	MIX VEGGIES	HOMINY & PIMENTOS	FRENCH CUT GREEN BEANS
	CAULIFLOWER	BROCCOLI	BRUSSEL SPROUTS	BEAN MEDLEY	CARROTS



# The Daily

Edited by Joan Aschim

Published for the staff of Lane Community College

747-4501, ext. 2591

Tuesday, October 27, 1992

Fifth week of fall term

## JOINT CLASSIFICATION STUDY

**The Joint Review Committee held another meeting** on Oct. 22.

Additional class descriptions were reviewed by the committee so that they may be reviewed by the Subject Matter Experts(SMEs). The SME panel for office and administrative support, personnel, and purchasing was

recommended.

Additional open job family meetings will continue to be held. During those meetings, copies of the drafts of class descriptions will be reviewed with interested employees and supervisors. Watch The Daily for the schedule of those meetings.

Please come to these meetings and ask questions. It is **very** important that all classified employees be involved in this classification study. If you are not sure which job family best represents the position you hold at LCC, please attend any and all open meetings which you believe may apply. - Submitted by Jane Russell, Chair, Joint Review Committee.

## Faculty leave proposals needed

Attention faculty members: The Professional Development Long Term Leave Committee is soliciting proposals for Spring 1993 term leaves. Guidelines and application forms are available from Roxanne Flowerday or Pat John in Study Skills, ext. 2439.

## Classified Council agenda

Classified Council meets Wednesday, Oct. 28, from 3-5 p.m. in PE 205. Facilitating will be Jill Bradley, ext. 2298. All interested staff may attend. Highlights from the agenda:

- Institutional effectiveness measurement plan
- Nominations for accreditation committee
- OSPIRG presentation

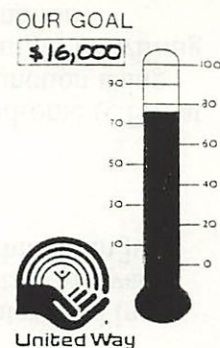
## United Way campaign update

Lane County United Way needs your contributions to help the homeless, those who suffer from sexual assaults, victims of child abuse, and a variety of other needy individuals for whom there is no other source of assistance. Your entire gift is used here at home--not one cent leaves the county.

So far at Lane, \$12,127 has been contributed, bringing the campaign up to 76 percent of its \$16,000 goal.

If you haven't contributed please consider making a donation to United Way. It's the county's primary charitable, human services organization. Send your completed claim forms to your employee group coordinator or call Lloyd Rain at ext. 2208 if you need information.

Coordinators are Diane Engle in Counseling at ext. 2299 for classified; Annick Todd in ESL at ext. 2253 for faculty; and Lloyd Rain in Purchasing at ext. 2208 for management.



## Brown bag lunch focuses on Latino women

The Brown Bag Latino Women's Discussion Group will meet on Wednesday, Oct. 28, from 12-1 p.m. in PE 205. Interested staff may call Clara Lindstrom at ext. 2276 for more information. The luncheon is sponsored by the Multi-Cultural Center.



*Margaret Bayless*

## English instructor hired

Meet Margaret Bayless, a new instructor this fall in English, Foreign Language and Speech. She began work Sept. 14. She most recently taught at Butler University in Indianapolis. She taught at Portland Community College from 1980-84 and 1978-80 where she also held some administrative duties.

Margaret completed a Ph.D. in English from the University of Oregon in 1991, where she also earned her master's degree. Her bachelor's is from Boise State University. The UO gave her a Distinguished Graduate Teaching Fellow Award in 1988 and Outstanding Composition Teacher Award in 1987.

Much of Margaret's work has been on writer Willa Cather. Her dissertation was titled, "Willa Cather's Duplicity in Telling a Woman's Story," and is a study of the relations between narrative strategies and gender in Cather's novels.



## Flight Tech commended for its safety record

Regal Aviation & Marine Insurance has commended Lane's Flight Technology program for an outstanding safety record in the form of a letter and an insurance credit. The commendation came in September in spite of a student helicopter accident which involved no injuries, mechanical defects or supervisory lapses. Said the insurance firm, "we still consider Lane Community College as the premier flight school in the Northwest."

## Video shoot rescheduled

Westcom Creative Group will be shooting the new high school marketing video on campus all day Thursday, Oct. 29, and additional days to be announced. When possible, we will call ahead for approval from instructors or department heads. However, please bear with us if schedule changes preclude advance notice. Westcom is adept at taping with little disruption to classes. Thank you for your cooperation. - Shan Titus, High School Relations, ext. 2688.

## Thanks from Nancy Jaques

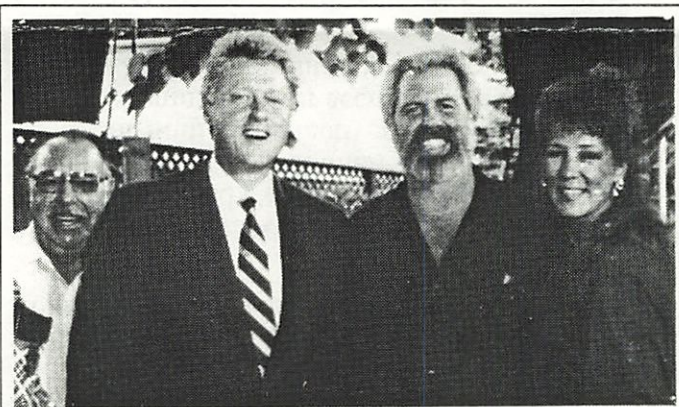
You never know what it means to have wonderful friends and co-workers until something occurs like what happened to me in the past few months. Julie Baker has kept in close contact with me and has showed me what my friends at Lane have contributed to the insurance fund she set up for me. According to my doctors, I probably won't be back to work until the first of the year. I'm looking ahead to when I'm finally well and can come back to work. I want to thank all of you for your wonderful support and generosity and all of the cards by letting me know that you care. - Nancy Jaques, Curriculum and Scheduling.

## Staff volleyball announced

The Intramural Office has again scheduled time for staff volleyball. Any staff interested in playing a social game of volleyball on Monday afternoons between 5:30-7 p.m. can contact Maryanne Graham or Gary Knapp at ext. 2293. Departments can either nominate a team or individuals can just turn up and play.

## Chronic Fatigue Syndrome project seeks participants

Science instructor Bruce Graham is conducting research into chronic fatigue syndrome (CFS) at the University of Oregon. The research involves non-invasive examination of muscle function using nuclear magnetic resonance. Anyone who has CFS or knows of people with CFS who might be willing to participate as a subject should contact Bruce at ext. 2446 or 345-1445 for more information.



Former LCC student Frank Henderson is pictured here with Gov. Bill Clinton and fellow dislocated worker Max Groesbeck to his left, and wife Glenna to his right. Henderson recently graduated from the Dislocated Worker Program at Lane and started his own business, Hi-Tech Plastics, which does thermal plastic welding repair and fabrication. He's also a part-time aide in the welding program. Clinton visited with Henderson and other dislocated workers on his September 14 visit to Eugene. (Photo courtesy of The Torch)

### ADS

FOR SALE: Montgomery Ward 5hp REAR-TINED TILLER, \$175. Huskavarna 5hp self-propelled LAWN MOWER, \$125. 1990 Toyota Camry factory BUG SHIELD, never used, \$50. All prices firm. Ed Pinckney, Laundry, ext. 2483.

FOR SALE: MODULAR STAINED PINE BEDROOM FURNITURE. Includes two twin beds (one extra long), small attached desk, top bed sits on 4 drawers, and shelf is at end of bed. Will fit into a small bedroom. Asking \$200. Sandra Jones, Senior Companion Program, 683-8043.

TIRED OF THE SAME OLD HOLIDAYS? Nothing to look forward to later? Give yourself and your loved one a trip to Europe for only \$2,010 (adults) or \$1,780 (students under 25). Visit London, Paris, Lucerne, Florence, Rome, in the beautiful month of May, 1993. Beat the heat and summer tourist prices. Full payment is due by Dec. 18, 1992 (subject to 10% increase afterwards). Contact me for some LCC staff references about our previous tours. Lorna Funnell, Cont. Ed., ext. 2906, or 342-4817; or Kathy Hoy, 343-7819.

FOR SALE: WHIRLPOOL BUILT-IN DISHWASHER, \$150. TWIN SIZE metal bed frame still in the box, \$20. TWO ANTIQUE ROCKING CHAIRS, \$80 and \$100. Wards UPRIGHT VACUUM CLEANER with attachments, \$20. Tom Schoen, Campus Services, ext. 2567 or 726-6417.

LARGE DOG HOUSE for sale, home made, wooden, shingle roof, double layer floor, \$50 OBO. Jeannie Peterson, T&D, ext. 2860.

FOR SALE: TWO 13-INCH FIRESTONE STUDDED TIRES mounted on wheels, \$90. Two 13-inch studed tires, \$60. Velma Jesser, ext. 2018 (office hours 11-12 MWF, 9-10 UH) or 683-1070.

NOW TAKING ORDERS for Entertainment '93 books. They are filled with coupons and special offers for restaurants and entertainment all over the mid-Willamette Valley. This year's book is expanded again but sells for the same value of \$30. Your purchase through me will help the Greater Eugene Chorus of Sweet Adelines, Int. Order now: the Chorus earns extra credit for pre-sold orders, and you can use the book immediately. Gloria Jarvis, Financial Svcs., ext. 2604.

DAILY INFORMATION - Deadline for The Daily is 12-noon of the working day prior to publication on Mondays, Tuesdays, Wednesdays, and Thursdays. Submissions must be made in writing and include first and last name, department, and extension number. Send to The Daily in intercampus mail or deliver to Admin. 210. All items will be run at least once and more often if space permits. Priority will be given to new items.



# The Daily

Edited by Joan Aschim

Published for the staff of Lane Community College

747-4501, ext. 2591

Wednesday, October 28, 1992

Fifth week of fall term

## **ESL students participate in ballet**

English as a Second Language students Nian Mei Geng and Qian Ping Guo premiered in leading roles in the Eugene Ballet's production of Swan Lake. The production has received rave reviews and Mei and Ping's outstanding performance on Oct. 24 was enthusiastically received with a standing ovation. ABE/ESL extends the warmest congratulations to our two ESL students from the People's Republic of China. Their artistic contribution to the artistic community will continue to be greatly appreciated. - Bryan Moore, ESL, ext. 2253.

## **A story about long-lost and replaced money**

Six years ago three Adult High School instructors, Nan Phifer, Fay McClain, and Steve Wolf, and records clerk Debora Coelho, sent a letter to foundations and organizations appealing for scholarship money for high school students. Because these students aren't eligible for the various loans and scholarships available to college students, many can't afford to complete high school. Larry Romine provided information and encouragement, but despite everyone's efforts, no money was given--or so it seemed.

This summer, Roberta Opdenweyer, LCC Foundation secretary, received a call from the Rose E. Tucker Charitable Trust in Portland asking why the AHS had not cashed a check for \$1,500 mailed in 1986. Roberta called Nan at home. "What? A check? We really did start a fund?" No one knows what happened to the original check, but a replacement has been issued, and a scholarship fund for needy and deserving high school students is now established. - Nan Phifer, AHS, ext. 2292.

## **Women on the Oregon Trail featured**

A slide-lecture concerning women on the Oregon Trail called "We're Going Where?" will be presented in Center 402 at 12:10 p.m. on Thursday, Oct. 29. Anyone interested may attend. - Milton Madden, Social Science, ext. 2428.

## **Teleconference examines the multi-age classroom**

A Today in Higher Education Series teleconference, The Multi-Age Classroom, will be shown Thursday, Nov. 5, from 9 a.m. to 12 p.m. in Center 10. Solutions will be provided for integrating learning styles, developing instructional methods for a multi-age setting, adapting course content to utilize the experiences of adults, understanding the pros and cons of a multi-age classroom, and responding to student needs. For more information and reservations, call Julie Baker at ext. 2199.

## **Student Success meeting**

The first Student Success meeting will be Thursday, Oct. 29, at 4 p.m. in PE 205. Everyone is welcome. Please contact Evelyn Nagy at ext. 2947 if you have questions.

## **Staff expertise questionnaire due**

A form attached to the Oct. 21 Daily to collect information about the little known and untapped skills, experiences and expertise of Lane employees is needed by Nov. 4. Get in the guide -- fill out the form and send it to Linda Myers in Cooperative Education. If enough people respond, the guide will be printed and available to staff and departments.

## **Special staff ticket price offered this weekend only**

Order tickets in advance for only \$3 each, a 25 percent discount, to The Effect of Gamma Rays on Man-In-The-Moon Marigolds this weekend at Performing Arts Blue Door Theater. The play is winner of the Pulitzer Prize, the Obie Award, and the New York Drama Critics Circle Award as Best American Play of the season. It runs Oct. 30 and 31 and Nov. 6 and 7 at 8 p.m. Call the Box Office at ext. 2202 from 12-4 p.m.

## **Members sought for Accreditation Steering Committee**

President Moskus is seeking nominations of staff members to serve on the college's Accreditation Steering Committee. Membership will come from faculty, classified, management, branches, and campus locations. This is a working committee, not an advisory committee. Members must be prepared to make a two-year commitment to the self-study process. If you are interested, contact Classified or Faculty Councils, the Management Steering Committee, or Julie Aspinwall-Lamberts (ext. 2576) by October 30. For more information call ext. 2576.

## **Space still available for customer service workshop**

Space is still available for the Oct. 29 staff development workshop, Giving Exceptional Customer Service, at the Emerald Valley Inn. Call Julie Baker at ext. 2199 for lunch or breakfast reservations.



## Canceled

Instructional Cabinet meetings for Oct. 28 and Nov. 4 have been canceled.

## Chronic Fatigue Syndrome project seeks participants

Science instructor Bruce Graham is conducting research into chronic fatigue syndrome (CFS) at the University of Oregon. The research involves non-invasive examination of muscle function using nuclear magnetic resonance. Anyone who has CFS or knows of people with CFS who might be willing to participate as a subject should contact Bruce at ext. 2446 or 345-1445 for more information.

He is also looking for control subjects for comparison to CFS subjects, particularly relatively sedentary females 30 to 50 years old.

## Conferences to consider

For more information about the following, contact Julie Baker at ext. 2199.

- Partner Relations, LCC Customized Training, Eugene, Oct. 28 and Nov. 11, \$8 + \$79.
- How to Handle Conflict and Manage Anger, Eugene, Nov. 2, \$98.
- How to Work With Impossible People, Eugene, Nov. 2, \$115.
- Turning Around Customer Complaints, Eugene, Nov. 2, \$125.
- Corporate Education as a Strategic Business Partner: Creating Total Quality Education, Boston, Nov. 4-6, \$595.
- Peak Performance Under Pressure, Salem, Nov. 5, \$105.
- Stress at Work: Making it Work for You, LCC Customized Training, Eugene, Nov. 6, \$9 + \$88.
- Leadership and Supervisory Skills for Women, Eugene, Nov. 10, \$69.
- What Every PC User Should Know About DOS, Beaverton, Nov. 10, \$125.
- Personal Empowerment, Salem, Nov. 12, \$105.
- Leading the Way for Successful Transitions: The Freshman Year Experience, Hayward, CA, Nov. 14, \$155.
- Identify and fix Pesky PC Problems, Eugene, Nov. 16, \$145.
- Advanced Troubleshooting for the Macintosh, Seattle, Nov. 16-17, \$795.
- Focus on the Future: Making Your Institution Responsive to Diverse Students and New Demands, Washington, DC, Nov. 16-17, \$395.
- Parent-Adolescent Relationships, LCC Customized Training, Eugene, Nov. 18 and Dec. 2, \$8 + \$79.
- How to Use Self-Managing Work Teams to Improve Quality, Productivity, and Competitive Position, Seattle, Nov. 19-20, \$825.
- Self-Esteem at Work: Making it Work for You, LCC Customized Training, Eugene, Nov. 20 and Dec. 4, \$9 + \$88.
- Managing Multiple Priorities, Eugene, Nov. 30, \$125.
- Quality Improvement for Project Teams, Portland, Dec. 3-4, \$795.
- WK Kellogg National Fellowship Program, applications due December 15.

## ADS

BECAUSE TODAY IS HER BIRTHDAY, Roxanne Flowerday will give you a kiss if you stop by her desk in Study Skills before 4:30 p.m.! (Study Skills staff, ext. 2439).

FOR SALE: Montgomery Ward 5hp REAR-TINED TILLER, \$175. Huskavarna 5hp self-propelled LAWN MOWER, \$125. 1990 Toyota Camry factory BUG SHIELD, never used, \$50. All prices firm. Ed Pinckney, Laundry, ext. 2483.

FOR SALE: MODULAR STAINED PINE BEDROOM FURNITURE. Includes two twin beds (one extra long), small attached desk, top bed sits on 4 drawers, and shelf is at end of bed. Will fit into a small bedroom. Asking \$200. Sandra Jones, Senior Companion Program, 683-8043.

TIRED OF THE SAME OLD HOLIDAYS? Nothing to look forward to later? Give yourself and your loved one a trip to Europe for only \$2,010 (adults) or \$1,780 (students under 25). Visit London, Paris, Lucerne, Florence, Rome, in the beautiful month of May, 1993. Beat the heat and summer tourist prices. Full payment is due by Dec. 18, 1992 (subject to 10% increase afterwards). Contact me for some LCC staff references about our previous tours. Lorna Funnell, Cont. Ed., ext. 2906, or 342-4817; or Kathy Hoy, 343-7819.

FOR SALE: WHIRLPOOL BUILT-IN DISHWASHER, \$150. TWIN SIZE metal bed frame still in the box, \$20. TWO ANTIQUE ROCKING CHAIRS, \$80 and \$100. Wards UPRIGHT VACUUM CLEANER with attachments, \$20. Tom Schoen, Campus Services, ext. 2567 or 726-6417.

LARGE DOG HOUSE for sale, home made, wooden, shingle roof, double layer floor, \$50 OBO. Jeannie Peterson, T&D, ext. 2860.

FOR SALE: TWO 13-INCH FIRESTONE STUDDED TIRES mounted on wheels, \$90. Two 13-inch studded tires, \$60. Velma Jesser, ext. 2018 (office hours 11-12 MWF, 9-10 UH) or 683-1070.

NOW TAKING ORDERS for Entertainment '93 books. They are filled with coupons and special offers for restaurants and entertainment all over the mid-Willamette Valley. This year's book is expanded again but sells for the same value of \$30. Your purchase through me will help the Greater Eugene Chorus of Sweet Adelines, Int. Order now: the Chorus earns extra credit for pre-sold orders, and you can use the book immediately. Gloria Jarvis, Financial Svcs., ext. 2604.

DAILY INFORMATION - Deadline for The Daily is 12-noon of the working day prior to publication on Mondays, Tuesdays, Wednesdays, and Thursdays. Submissions must be made in writing and include first and last name, department, and extension number. Send to The Daily in intercampus mail or deliver to Admin. 210. All items will be run at least once and more often if space permits. Priority will be given to new items.



# The Daily

Edited by Joan Aschim

Published for the staff of Lane Community College

747-4501, ext. 2591

Thursday, October 29, 1992

Fifth week of fall term

## Board, council and branch meetings

- Community & Economic Development Cabinet, Monday, Nov. 2, 1:30-3:30 p.m., Board Room
- Administrative Services managers, Tuesday, Nov. 3, 8:30-10 a.m., PE 205.
- Student Services directors, Wednesday, Nov. 4, 9-10:30 a.m., Admin. 206
- Board of Education, Wednesday, Nov. 4, 7:30 p.m., Board Room
- Managers' Forum, Friday, Nov. 6, 8:30-10 a.m., Forum 309
- Legislative Action Team, Thursday, Nov. 5, 7:30-9 a.m., Board Room
- Faculty Council, Thursday, Nov. 12, 3-4:30 p.m., Board Room
- College Council, Tuesday, Nov. 17, 3-5 p.m., Board Room
- Instructional Cabinet, Wednesday, Nov. 18, 1:30-3 p.m., Board Room
- Classified Council, Wednesday, Nov. 18, 3-5 p.m., PE 205

*The college's Legislative Action Team hosted some legislators on Oct. 20 to help the lawmakers understand more about the college and its positions on various issues locally and statewide. Following is the information handed out during the visit.*

## Information Prepared for Legislative Visit, October 20, 1992

### Lane Community College Data

**Enrollment:** Approximately 33,000 people will enroll this year.

**Service Area:** 5,000 square miles stretching from the Cascades to the coast (roughly Lane County). Facilities include 301-acre campus in Eugene and centers in downtown Eugene, Florence, Cottage Grove and at the Eugene Airport.

**Services and Future Need:** According to a district survey, 40 percent of residents 18 and over have taken a class or used a college service in the past five years and 51 percent plan to in the next three years. They will come to the college for:

- 31 percent to prepare for new jobs
- 18 percent to perform better in their present jobs
- 14 percent for college transfer credits
- 37 percent for a broad range of personal reasons from finishing high school to learning how to buy a house or start a business

**Quality:** In community surveys, residents give Lane high marks for service and quality. The college has won local and national recognition for many of its programs, is a member of the national League for Innovation in the Community College, and was designated one of the top five community colleges in the country by a national panel of educators.

**Funding:** In 1991-92, prior to implementation of Measure 5, Lane's sources of funding were: local taxes, 38.5 percent; State of Oregon, 24.8 percent; tuition and fees, 23.1 percent; and other, 13.4 percent. Under Measure 5, there is a great deal of uncertainty about both the sources and amount of funding.

### Challenges and Opportunities

#### Enrollment Pressures:

The college has seen steady enrollment increases for the last four years. This fall, enrollment is up an estimated 7 percent over last year. Major increases have occurred in the college transfer areas. This fall, within a few days of the start of registration, many math, English and science classes were full. No first-year students were able to get into foreign language classes. This is a general growth trend aggravated by budget cuts and by tuition increases at state system colleges and universities. The college has responded by adding 500 new class sections in the past year. Examples of other areas with waiting lists include literacy classes and such professional-technical programs as nursing.

Rising enrollments also create additional demand for student services such as academic advising and financial aid.

(continued)



### Other Areas to Watch:

Lane's nationally known Dislocated Worker Program prepares workers for new careers. It has served over 1,200 dislocated timber workers in the past three years. Oregon Education Reform creates a major role for community colleges to play in helping to train and to transition high school students into job training programs.

### Planning and Fiscal Uncertainty:

The college faces many questions under Measure 5 and is planning for 1993-94 budget cuts of \$1.1 to \$5.5 million from a \$47 million budget. Unknowns include: How much state support will come to community colleges?...Will the legislature allow Lane to continue to receive the new tax base funds voters approved on the same day as Measure 5 passed?...How will the equalization of state funds to community colleges affect Lane?

To plan for this uncertain future, the college is using specific criteria to evaluate all college programs and functions. Each is being asked, what would be the consequences if your program or service were eliminated, cut in half?

### College Position on Issues

#### Local :

Lane Transit District Transfer Station Placement of the LTD transfer station at the McDonald Theater site across from Lane's Downtown Center would eliminate the parking used by most students. The college opposes this site and will need assurance of safe, accessible parking for students. Students have expressed fear about walking greater distances downtown at night.

#### State:

Community College Funding The college has a vital interest in maintaining the funding established by its new tax base; in proposals to replace funding lost by Measure 5; and in the details of any equalization formula for community college funding. Lane supports requests of the Office of Community College Services outlined on the attached sheet.

Dislocated Worker Program The college is seeking the following for dislocated workers being trained at the college: funding to allow workers to remain in school long enough to complete a course of study; funding for health insurance for workers and their families; waiver of state income tax on unemployment benefit income.

Oregon Education Reform Lane is eager to play a role in providing professional technical training; however, no funding has been provided by the legislature for this program.

Sunset on State Community College Commissioner Position The position of community college commissioner for the state will end July 1993 unless new legislation is passed. This position is necessary to provide focus, advocacy and leadership for community colleges. Legislation is needed to make the position permanent.

**DAILY INFORMATION** - The Daily is published for the staff of Lane Community College by Institutional Advancement, Administration 210, 4000 E. 30th Ave., Eugene, OR 97405, (503)747-4501, Joan Aschim, Editor, ext. 2591; Diane Dann, Director, I.A., ext. 2303.

Deadline is 12-noon of the day prior to publication on Mondays, Tuesdays, Wednesdays, and Thursdays during fall, winter and spring terms; and Tuesdays during summer term and all term breaks. Submissions must be made in writing and include first and last name, department, and extension number. This information is required to be printed with ads. Ads are free and limited to staff. Send to The Daily in intercampus mail or deliver to Admin. 210. All items will be published at least once and repeated only if space permits. New items receive priority. The Thursday issue features shared decision-making news and includes usual Daily items as space permits.

### ADS

**FOR SALE: A REAL GUITAR.** 1970 cherry-finish Guild dreadnought. Solid top and sides. Big, warm, robust sound. Some small cosmetic flaws but otherwise very healthy, and a wonderful Christmas gift for an advancing guitarist. Includes hard-shell case. \$350. Call Rodney Ray, English, ext. 2482.

**QUEEN-SIZE MATTRESS,** brand new, name brand. Great deal! Was \$300; now \$180 OBO. 343-8076. Vincent Foster, ext. 2030, Counseling.

**FOR SALE: ELECTRIC TREADMILL,** P.M. Pacer, \$150. **TWIN BEDS** with bookcase headboards, \$20 each. Please call Dottie Skeers at home, 746-1840. (Foodservices, ext. 2670).

**1990 TOYOTA CELICA GT,** loaded, air, cruise, sun roof, power windows, locks, etc. 33,000 miles, still under factory warranty. Beautiful! Must see to appreciate. Asking \$12,500. Rick Venturi, S.E.S., ext. 2101, or 687-1495.