

The Daily

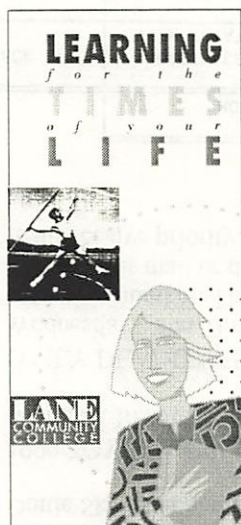
Edited by Joan Aschim

Published for the staff of Lane Community College

747-4501, ext. 2591

Monday, November 2, 1992

Sixth week of fall term



New brochure available

The new college-wide brochure is now available in Admissions. It replaces the old "Go For Success" brochure and has a new title and theme: "Learning for the Times of Your Life." It lists the many programs and services offered by the college, including a new chart of credit and noncredit opportunities by subject matter. Thomas Rubick, head of our graphic arts program, designed the brochure. Thanks to everyone involved for their work on this project. - Susan Sutton, Institutional Advancement, ext. 2593.

This week:

- Community & Economic Development Cabinet, Nov. 2, 1:30-3:30 p.m., Board Room
- Administrative Services managers, Nov. 3, 8:30-10 a.m., Board Room.
- Student Services directors, Nov. 4, 9-10:30 a.m., Admin. 206
- Board of Education, Wednesday, Nov. 4, 7:30 p.m., Board Room
- Legislative Action Team, Thursday, Nov. 5, 7:30-9 a.m., Board Room
- Managers' Forum, Friday, Nov. 6, 8:30-10 a.m., Forum 309

Diversity series welcomes Sojourner Truth

The Issues in Cultural Diversity seminar series features Sojourner Truth, a theatrical presentation of Afro-American history, on Tuesday, Nov. 3, from 3-4:30 p.m. and 5:30-7 p.m., in Apr. 223. Staff may register for credit or audit through the Social Science Dept. For more information, call Vicki Levine at ext. 2074.

KLCC/KLCO to provide live election coverage

The college's public radio station, KLCC/KLCO, will provide live election coverage on Nov. 3 beginning at 8 p.m. Tune in.

Managers' Forum scheduled

The second monthly Managers' Forum will be held Friday, Nov. 6, 8:30-10 a.m. in Forum 309. On the agenda are items from the November Board of Education meeting, a presentation from the Management Evaluation Subcommittee, and an update on the mainframe computer conversion. The next forum will be held Dec. 11 in the Board Room. - Marie Matsen, ext. 2313.

Workshop will tap into personal power

Linda de Caccia, MSW, will explore personal power and offer techniques to improve work and home relationships on Thursday, Nov. 5, at 3 p.m. in Business 203. Join in! - Julie Baker, ext. 2199.

Holiday silent auction offers refreshments

Have you ever wanted to eat, drink, talk and shop at the same time? You can do all that and get a head start on holiday gift buying at the AAWCJC Holiday Silent Auction on Tuesday, Nov. 17, from 5:30-7:30 p.m. at Judith Watt's home in southeast Eugene. Enjoy savory treats while placing your bid on a bottle of fine wine, a cheesecake, hand-crafted jewelry, an adorable teddy bear and much more. RSVP and get directions by calling Judith in Training & Development at ext. 2503. Come and bring your friends!

Holiday hosts needed for international students

Would you like to share one or more of your holiday dinners? Volunteer hosts are needed for Thanksgiving, Christmas and New Year's Day, when LCC international students could be included for dinners and family activities. You can offer new experiences, foods, and exchange cultural differences. If you can add one or more students to your dinner list, contact Pat Williams, ext. 2165, for an assignment.

Women's discussion group to meet

A brown bag women's discussion group will be held Wednesday, Nov. 18, from 12-2 p.m. in PE 205. The group will be facilitated by Clara Lindstrom of the Multi-Cultural Center and Sexual Assault Support Services of Lane County. Interested staff may call ext. 2276 for more information.

Staff expertise questionnaire deadline extended

The deadline to submit information about yourself to be included in a guide describing the skills, experience and expertise of Lane faculty and staff has been extended from Nov. 4 to Nov. 9. An information form was attached to the Oct. 21 Daily. If you need another, contact Linda Myers in Cooperative Education at ext. 2883.

Teleconference is Thursday

A Today in Higher Education Series teleconference, The Multi-Age Classroom, will be shown Thursday, Nov. 5, from 9 a.m. to 12 p.m. in Center 10. For more information and reservations, call Julie Baker at ext. 2199.

Safety Committee available to hear your concerns

The LCC Safety Committee meets monthly to hear your concerns. It evaluates policies, procedures, and training practices; makes recommendations; obtains and reviews safety suggestions and reports of hazards directly from staff; and conducts workplace inspections on a quarterly basis. Serving on the committee are: Ed Case, ext. 2574; Paul Colvin, ext. 2216; Don Hein, exts. 2190 or 2224; Sandy Ing, ext. 2666; Eilene LePelley, exts. 2930 or 2251; Debbie Powers, ext. 2120; John Shirey, exts. 2248 or 2826; and Tom Wayne, exts. 2447 or 2446.

Thanks

Thank you to the Welding Program for the cover over the sandbox. We have been able to enjoy the sand during the rain. Also, thank you to Julie Baker for the rebounder. We can jump really high! - ASLCC Child Care Co-op.

Road closure announced

Eldon Shafer Drive, the east entrance to main campus, will be closed on Nov. 7 from 9 a.m. to 3 p.m. for the OSAA High School State Cross Country Meet at Lane. Gonyea Road, the west entrance, will remain open; however, ticket sales will be ongoing at that site. If you're working or attending class that day, please notify the ticket sellers at the entrance. Thanks for your patience and cooperation.

JOBS

Computer Lab Assistant, 75% time, LCC at Florence, Aide V, closes 11/10/92.

ADS

"THIS CLASS CAN CHANGE YOUR METABOLISM and bring a lot of fun to you," says one of the students in Aerobics to Classics. The dance and exercise class is held 5:15-6:30 p.m. Monday and Wednesday in PE 125 with Continuing Ed. instructor Janet Hollander. It's never too late to join! Winter term, the class will be held at Cal Young Middle School from 5:30-6:30 p.m. For more information, call Continuing Ed at ext. 2252. - Lorna Funnell.

FOR SALE: AN UNUSED \$440 PLANE TICKET! Originally round-trip Eugene-Hawaii. It can be changed for equal or lesser 1-trip value on United Airlines between now and next August. We're taking a loss at \$375 (OBO) but will cover date-change charges. Contact Tui or Darrell at 686-5633; or Tui Lindsey at ext. 2204, Counseling.

FOR SALE: YAMAHA GRAND PIANO, 5'3", satin ebony finish, 6 years old, excellent condition. Ask for James Sanders, ext. 2850, Campus Ministry, or 747-5090.

FOR SALE: A REAL GUITAR. 1970 cherry-finish Guild dreadnought. Solid top and sides. Big, warm, robust sound. Some small cosmetic flaws but otherwise very healthy, and a wonderful Christmas gift for an advancing guitarist. Includes hard-shell case. \$350. Call Rodney Ray, English, ext. 2482.

QUEEN-SIZE MATTRESS, brand new, name brand. Great deal! Was \$300; now \$180 OBO. 343-8076. Vincent Foster, ext. 2030, Counseling.

FOR SALE: ELECTRIC TREADMILL, P.M. Pacer, \$150. TWIN BEDS with bookcase headboards, \$20 each. Please call Dottie Skeers at home, 746-1840. (Foodservices, ext. 2670).

1990 TOYOTA CELICA GT, loaded, air, cruise, sun roof, power windows, locks, etc. 33,000 miles, still under factory warranty. Beautiful! Must see to appreciate. Asking \$12,500. Rick Venturi, S.E.S., ext. 2101, or 687-1495.

DAILY DEADLINES - Deadline for The Daily is 12-noon of the day prior to publication on Mondays, Tuesdays, Wednesdays, and Thursdays. Submissions must be made in writing and include first and last name, department, and extension number. This information is required to be printed with ads. Ads are free and limited to staff. Send to The Daily in intercampus mail or deliver to Admin. 210. All items will be published at least once and repeated only if space permits. New items receive priority. The Thursday issue features shared decision-making news.

MAIN CAMPUS CAFETERIA WEEK #6

	MONDAY	TUESDAY	WEDNESDAY	THURSDAY	FRIDAY
SNACK BAR	ROAST BEEF SANDWICH WITH POTATOES & GRAVY	EGG CHICKEN CASSEROLE	RIGATONI	HOT TURKEY SANDWICH WITH SPUDS & GRAVY	TUNA NOODLE CASSEROLE
SOUP	POTATO ALMOND VEGGIE SOUP CHILI	COOK'S CHOICE CHILI	CREAM OF MUSHROOM CHICKEN VEGGIE CHILI	SAUSAGE & BEAN FRENCH ONION CHILI	CLAM CHOWDER COOK'S CHOICE CHILI
MAIN ENTREE	ROAST BEEF EGG & CHICKEN CHILI CASSEROLE CORNEBEEF ON RYE	BBO CHICKEN SWEET AND SOUR PORK PIZZA	PORK ROAST MEXICAN MACARONI POCKET SANDWICH WITH SPROUTS	SPINACH AND BEEF MUSHROOM ROLLS TUNA NOODLE CASSEROLE CHICKEN SANDWICH	TURKEY LOAF HAM AND CHICKEN CASSEROLE TUNA MELT
VEGGIE	RUSTIC VEGETABLE PIE	ZUCCHINI RICE TETRAZZINI	STIR FRY VEGGIES	LENTIL CASSEROLE	EGG ROLL
MINI	MUSHROOM TURKEY WITH RICE	BEEF RIGATONI	POTATO BEEF HASH BROWN CASSEROLE	CHICKEN BROCCOLI DIVAN	BEEF STROGANOFF
VEGETABLE	CARROTS PEAS	CORN BROCCOLI	CAULIFLOWER FRENCH CUT BEANS	MIXED VEGGIE BRUSSELS SPROUTS	BEAN MEDLEY HOMINY WITH PIMENTOS

The Daily

Edited by Joan Aschim

Published for the staff of Lane Community College

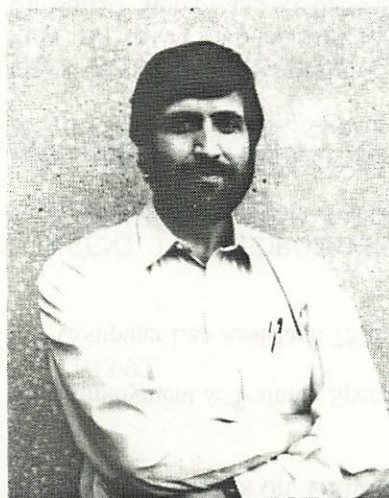
747-4501, ext. 2591

Tuesday, November 3, 1992

Sixth week of fall term

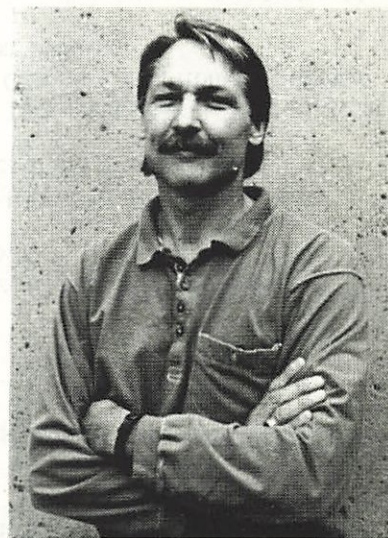
Energy management program charging up at Lane

Roger Ebbage and Ahmad Rajabzadeh were hired this fall to teach in the Energy Management Technician Program. The program recently received \$213,000 from the Bonneville Power Administration which foresees energy conservation growth and a need for trained technicians in the Northwest. The two new instructors are uniquely qualified.



Ahmad Rajabzadeh

Ebbage has been teaching at Lane since 1989, most recently coordinating the Adult Basic Education/GED component of the multi-agency county-wide welfare reform program. He taught in Training & Development before that. Prior to joining Lane, he taught eight years at McClymonds High School in Oakland, Calif., where he designed and directed the construction of three solar-designed 1,900-square-foot student-built houses. He also won that school's Teacher of the Year Award for 1987-88. He has two degrees in industrial arts: a master's from San Jose State University and a bachelor's from San Francisco State University.



Roger Ebbage

Rajabzadeh was a high school science instructor and department chair at Bishop Manogue High School in Reno, Nevada, where he was named among the top ten teachers in 1990. He taught math and physics at the University of Nevada, Western Nevada Community College, and at Truckee Meadows Community College in Reno. He conducted aerosol physics research for the Desert Research Institute in Reno, and worked as an electrician for Grooheh Company in Mash-had, Iran. He has a bachelor's degree in physics from Eastern Washington University in Cheney and has done graduate physics coursework at the University of Nevada and has attended numerous science seminars.

Ebbage and Rajabzadeh can be reached through the Science Dept. at ext. 2446. They returned this week from a conference at the University of Wisconsin on "The Role of the Energy Manager." They have 34 students in the program.

Speaker tonight

Virginia DeChaine, English, Foreign Language and Speech instructor, will speak in Jerome Garger's Peace & Conflict Studies class tonight, Nov. 3, from 7:15-8:30 p.m. in Center 449. Her topic: "Listening, Peace, and Conflict Resolution." Guests welcome.

Board agenda

The Board of Education meets Wednesday, Nov. 4, at 7:30 p.m. in the Board Room, following a 6 p.m. closed executive session to discuss faculty negotiations. Highlights on the agenda:

- commissioner's task force on out-of-district and non-district services
- financial report for 1991-92
- faculty negotiator contract approval
- board policy revision process
- Budget Committee appointments
- College Plan discussion
- board policy readings: disposal of surplus property; contractual authority of the president

United Way campaign is nearing the goal

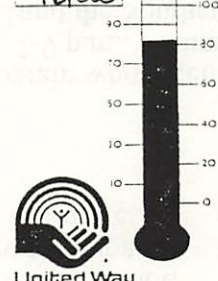
We're nearing our goal of \$16,000 in the college United Way Campaign with \$13,258 in donations, an achievement level of 83 percent.

If you haven't contributed please consider making a donation to United Way. It's the county's primary charitable, human services organization. Send your completed claim forms to your employee group coordinator or call Lloyd Rain at ext. 2208 if you need information.

Coordinators are Diane Engle in Counseling at ext. 2299 for classified; Annick Todd in ESL at ext. 2253 for faculty; and Lloyd Rain in Purchasing at ext. 2208 for management.

OUR GOAL

\$16,000



Let the holiday's begin

The college will be closed three days this month for holidays: Wednesday, Nov. 11, Veterans' Day; and Thursday and Friday, Nov. 26 and 27, Thanksgiving.

Coming soon to a library near you: on-line service

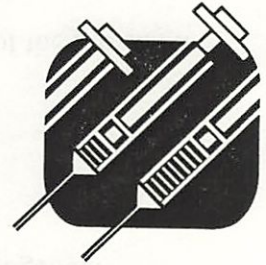
The Library started the installation of its new on-line computer catalog on Nov. 2. The new features will make locating information simple and efficient. The system will undergo testing and refinement over the next two months and should be ready for public use winter term. For more information, contact Cheryl Coleman or May Fogg at ext. 2220.

Office skills students to be honored

A promotion ceremony honoring the students of the Office Skills Training Program who recently have completed the academic portion of their program will be held on Friday, Nov. 6, 7-9 p.m., Forum 308-309. A reception will follow in the Cafeteria. The program is sponsored by LCC and the Southern Willamette Private Industry Council.

Staff flu shots still available--and recommended

Flu shots are available to staff at Student Health Services. No appointment is necessary but to make the process smoother, please pick up a fee slip and consent form ahead of time, pay your fees, fill out the form, and bring receipt and completed form with you to get your immunization. Student Health is located on the first floor of the Center Building, northeast corner. Hours are 8 a.m. to 12:30 p.m. and 1:30-3:30 p.m. Administrative Assistant Laura Roberts has seen the flu in action and highly recommends the inoculation.



Class participants enthusiastic about instructor

Guy Allison, Continuing Education instructor, recently earned accolades from his Sisters tour class. A visitor from Adelaide, Australia, wrote: "I had a wonderful day. Guy is a great driver, confident and most pleasant. If I ever come to the U.S. again, I'd endeavor to find him." Another wrote, "More than just visiting wonderful places, Guy made it fun and educational. He really knows how to relate to people." For more information, see the non-credit listings in the class schedule under "recreation." - Lorna Funnell, Continuing Ed., ext. 2906.

Golf results

The LCC Foundation held its tenth annual golf tournament on Oct. 2. It was the best such fundraiser ever with \$11,008 net profit. Foundation Director Joe Farmer says this is due in part to the generosity of the Eugene Country Club which waived green fees for the event. In all, there were 40 tee sponsors, 76 prize donors and 84 players. Special thanks are due to the hard-working volunteers: Julie Aspinwall-Lamberts, Carol Beckley, Bev Berard, Cindy Dietz, Cindi Farmer, Kay King, Joyce Kofford, Cynde Leathers, Marie Matsen, Angela Miller, David Opdenweyer, Katie Opdenweyer, Judy Ward, Beth Webb, Sally Wilson and Sydney Wilson.

Workshop will tap into personal power

Linda de Caccia, MSW, will explore personal power and offer techniques to improve work and home relationships on Thursday, Nov. 5, from 3-5 p.m. in Bus. 203. Join in! - Julie Baker, ext. 2199.

JOBS

- Employment & Training Specialist, Training & Development Dept. Eight positions available. Specialist VIII. Closes 11/13/92.
- Computer Lab Assistant, 75% time, LCC at Florence, Aide V, closes 11/10/92.

ADS

FOR RENT: TWO-BEDROOM HOUSE ON 1/3-Acre near Churchill H.S. Fenced yard, oil heat, nice landscaping. \$600/month including heat. Available Dec. 1. Lynne Swift, T&D, ext. 2503, or 484-9802.

FOR SALE: 1978 CADILLAC Coupe de Ville, lots of miles, super good car, \$2,500 or best offer. Heavy-duty Ford TRAILER with high sides, \$400 or best offer. Sandy Davis, Bookstore, ext. 2681; or see at 233 W. Centennial.

SEASONAL GALLERY INVITATION: Two Continuing Ed. instructors, Gloria Faye Tinker and Ellen Gabehart (LCC at Florence), have their handiwork for sale along with fellow artists at Galerie Noel in the Oakway Center from now through Christmas. Stop by and see these unique and elegant gifts. - Lorna Funnell, Cont. ed. ext. 2906.

"THIS CLASS CAN CHANGE YOUR METABOLISM and bring a lot of fun to you," says one of the students in Aerobics to Classics. The dance and exercise class is held 5:15-6:30 p.m. Monday and Wednesday in PE 125 with Continuing Ed. instructor Janet Hollander. It's never too late to join! Winter term, the class will be held at Cal Young Middle School from 5:30-6:30 p.m. For more information, call Continuing Ed at ext. 2252. - Lorna Funnell.

FOR SALE: AN UNUSED \$440 PLANE TICKET! Originally round-trip Eugene-Hawaii. It can be changed for equal or lesser 1-trip value on United Airlines between now and next August. We're taking a loss at \$375 (OBO) but will cover date-change charges. Contact Tui or Darrell at 686-5633; or Tui Lindsey at ext. 2204, Counseling.

FOR SALE: YAMAHA GRAND PIANO, 5'3", satin ebony finish, 6 years old, excellent condition. Ask for James Sanders, ext. 2850, Campus Ministry, or 747-5090.

DAILY DEADLINES - Deadline for The Daily is 12-noon of the day prior to publication on Mondays, Tuesdays, Wednesdays, and Thursdays. Submissions must be made in writing and include first and last name, department, and extension number. This information is required to be printed with ads. Ads are free and limited to staff. Send to The Daily in intercampus mail or deliver to Admin. 210. All items will be published at least once and repeated only if space permits. New items receive priority. The Thursday issue features shared decision-making news.

The Daily

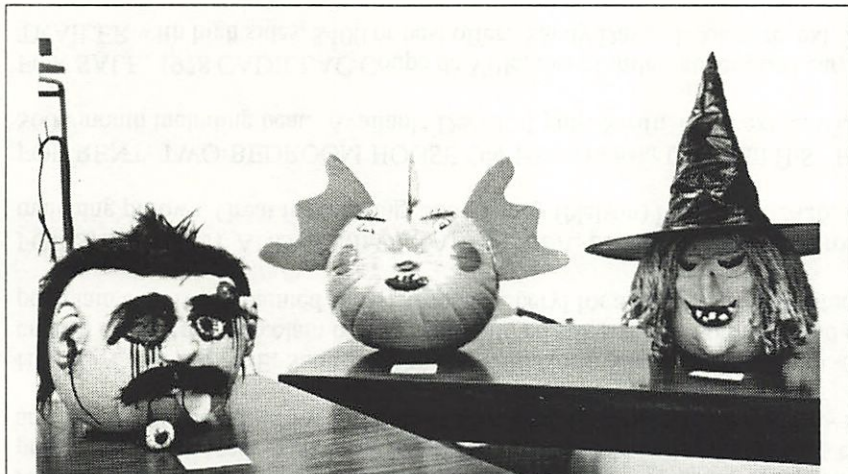
Edited by Joan Aschim

Published for the staff of Lane Community College

747-4501, ext. 2591

Wednesday, November 4, 1992

Sixth week of fall term



No, these are not the three presidential candidates on yesterday's ballot. These are examples of the handiwork of Dean Bergen's auto paint students. Each fall, Bergen assigns the students the task of painting pumpkins with auto paint and other materials of the trade to stimulate creativity.

This will be a great opportunity for you to see what's available and how it works. Questions? Call Steve Evans in Purchasing at ext. 2453, or Boise Cascade rep Karen Evans at 344-9510 ext. 628.

Diversity Committee changes meeting date

The Diversity Committee will meet Monday, Nov. 23, at 3 p.m. in Center 446, instead of Nov. 9 as previously announced. - Julie Baker, ext. 2199.

Boise Cascade products to be displayed

Are you interested in the latest office products on today's market? New merchandise will be shown to all Boise Cascade office products users at the Valley River Inn on Wednesday, Nov. 18, from 1-6 p.m. There will be 30 to 40 vendors available to talk to you. All products shown will be available in the 1993 Boise Cascade catalog.

Help plan January in-service

A planning committee for Martin Luther King Day in-service on Jan. 18 will meet Nov. 16 from 3-5 p.m. in PE 205. The committee will discuss ideas for staff professional development offerings. Reps from Classified, Faculty and Management Professional Development Teams, the International Education Committee, and the Diversity Committee will attend. Affirmative Action Director Donna Albro will chair. Care to participate? Join us. If you'd like to participate but have a schedule conflict, call Julie Baker at ext. 2199.

Take the Pesti. Challenge

The Lane chapter of the Oregon Student Public Interest Research Group (OSPIRG) asks you to encourage students to take part in OSPIRG's Pesticide Awareness Day today, Nov. 4, in the Cafeteria from 10 a.m. to 2 p.m. There will be an apple tasting between organically and commercially grown apples.

Teleconference examines the multi-age classroom

A Today in Higher Education Series teleconference, The Multi-Age Classroom, will be shown Thursday, Nov. 5, from 9 a.m. to 12 p.m. in Center 10. Solutions will be provided for integrating learning styles, developing instructional methods for a multi-age setting, adapting course content to utilize the experiences of adults, understanding the pros and cons of a multi-age classroom, and responding to student needs. For more information and reservations, call Julie Baker at ext. 2199.

New nature trail serves as outdoor classroom and recreational walk



Lucy Shafer and Joe Russin

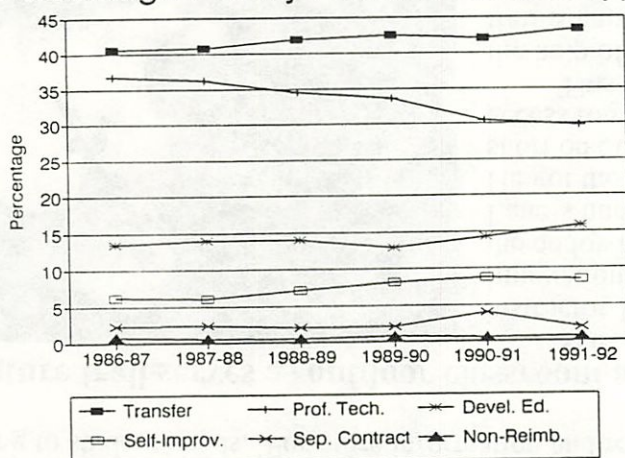
(Photo by Richard Fraga, Science Dept.)

Staff and students can enjoy the benefits of Science instructor Joe Russin's Eldon G. Shafer Endowment for Innovation Award. Russin received \$2,100 in 1991 from the endowment to build a nature trail through some of Lane's undeveloped land south of the Science Building. He got the idea after his science classes were stopped short on outdoor excursions by poison oak and poor access routes.

This fall, Russin dedicated the completed trail with the help of endowment committee chair Lucy Shafer. The trail is named after Eldon G. Shafer. "This trail was built by the community," Russin said, citing many local businesses, civic organizations, and staff who contributed materials, tools and labor. He wants everyone to use it, for study or recreation. The loop takes about 20 minutes. You'll find it at the east end of the south parking lot.

The Board of Education periodically reviews key benchmarks that measure the college's overall direction or achievement of its goals. Following is a benchmark reviewed in October.

Percentage FTE by Reimbursement Type



☑ Over the six-year period, there has been an increase in the percentage share of transfer, developmental education, and self-improvement FTE.

☑ Over the six-year period, there has been a decrease in the percentage of professional technical FTE. FTE in the separate contract and non-reimbursable categories has remained fairly constant.

SOURCE: Enrollment Summary Reports
Research, Planning and Evaluation
September 15, 1992

information, call Lucy Senter at 737-4190 in Corvallis. Parnell is founding president of Lane, past president of the American Association of Junior and Community Colleges, and past Oregon community college commissioner.

Multi-Cultural Center hosts social hour

Staff are invited to visit the Multi-Cultural Center Social Hour every Thursday at 1:30 p.m. in Center 409.

Conferences

- Quality Improvement for Project Teams, Portland, Dec. 3-4, \$795.
- Reality and Regeneration: Today's Problems, Tomorrow's Solutions, ACE, San Diego, Jan. 24-27, \$330.
- Lifelong Learning: Improving Academic Quality During a Retrenchment Era, San Diego, Feb. 10-12, \$275.

For more information, contact Julie Baker at ext. 2199.

Dale Parnell class announced

A three-credit Dale Parnell class, Community College Curriculum and Instruction, will be held winter term at Oregon State University on Tuesdays from 3:30-6:30 p.m. in the OSU School of Education, Room 228. For registration

JOBS

- Employment & Training Specialist, Training & Development Dept. Eight positions available. Specialist VIII. Closes 11/13/92.

ADS

FOUND at Emerald Valley Inn on Oct. 29: ladies blue umbrella. Julie Baker, ext. 2199.

AEROBICS TO CLASSICS will continue to meet in PE 205 winter term rather than at Cal Young Middle School as previously announced. You can join anytime. The dance and exercise class currently meets from 5:15-6:30 p.m. Monday and Wednesday in PE 125 with Continuing Ed. instructor Janet Hollander. - Lorna Funnell, Continuing Ed., ext. 2252.

HOLIDAY ART SALE, Saturday, Dec. 5, 4270 North Shasta Loop, 10 a.m.-6 p.m. Lisa Henry and Cheryl Kempner have created ornaments, porcelain bowls, hand-painted silk scarves, porcelain and glass earrings, pins and necklaces, paintings, porcelain angels and painted shirts. Contact Cheryl for a map, ext. 2844, Study Skills.

FOR SALE: COZY AND COMFORTABLE SOFA, perfect for the family room. Contemporary style in beige tones with five matching pillows. Great for relaxing. \$85. Ginny (Nelson) Reich, ext. 2426, E,FL&S; or 686-8188.

FOR RENT: TWO-BEDROOM HOUSE ON 1/3-Acre near Churchill H.S. Fenced yard, oil heat, nice landscaping. \$600/month including heat. Available Dec. 1. Lynne Swift, T&D, ext. 2503, or 484-9802.

FOR SALE: 1978 CADILLAC Coupe de Ville, lots of miles, super good car, \$2,500 or best offer. Heavy-duty Ford TRAILER with high sides, \$400 or best offer. Sandy Davis, Bookstore, ext. 2681; or see at 233 W. Centennial.

SEASONAL GALLERY INVITATION: Two Continuing Ed. instructors, Gloria Faye Tinker and Ellen Gabehart (LCC at Florence), have their handiwork for sale along with fellow artists at Galerie Noel in the Oakway Center from now through Christmas. Stop by and see these unique and elegant gifts. - Lorna Funnell, Cont. ed. ext. 2906.

Daily deadlines

Deadline for The Daily is 12-noon of the day prior to publication on Mondays, Tuesdays, Wednesdays, and Thursdays. Submissions must be made in writing and include first and last name, department, and extension number. This information is required to be printed with ads. Ads are free and limited to staff. Send to The Daily in intercampus mail or deliver to Admin. 210. All items will be published at least once and repeated only if space permits. New items receive priority. The Thursday issue features shared decision-making news.

The Daily

Edited by Joan Aschim

Published for the staff of Lane Community College

747-4501, ext. 2591

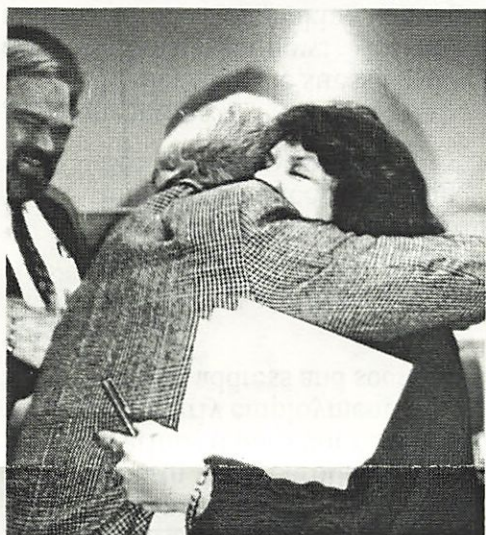
Thursday, November 5, 1992

Sixth week of fall term

Board, council and branch meetings

- Managers' Forum, Friday, Nov. 6, 8:30-10 a.m., Forum 309
- Administrative Services managers, Tuesday, Nov. 10, 8:30-10 a.m., PE 205
- Faculty Council, Thursday, Nov. 12, 3-4:30 p.m., Board Room
- Community & Economic Development Cabinet, Monday, Nov. 16, 1:30-3:30 p.m., Board Room
- College Council, Tuesday, Nov. 17, 3-5 p.m., Board Room
- Student Services directors, Wednesday, Nov. 18, 9-10:30 a.m., Admin. 206
- Instructional Cabinet, Wednesday, Nov. 18, 1:30-3 p.m., Board Room
- Classified Council, Wednesday, Nov. 18, 3-5 p.m., PE 205

Jane Russell named Employee of the Month



Jane Russell gets a hug from Larry Warford as Jerry Moskus looks on.

One of the people who worked hardest to create the Employee of the Month Award for classified staff in 1990-91 found herself its recipient for this November. Jane Russell, 15-year employee of Family and Health Careers, accepted the certificate, a mug, a lunch date with the president, and the best parking spot on main campus on Monday. President Jerry Moskus presented the award, accompanied by two vice presidents and Russell's enthusiastic co-workers and friends. Her portrait will be displayed on the LCCEF bulletin board all month.

Her nominators said:

"Jane's orientation is always the big picture, or what is good for the college."

"She has organized the staff of Family and Health Careers in an effort to maximize participation in decision-making for classified staff."

"Jane is direct and clear in her communications. She has an innate sense of when to press for closure and when to allow time for processing."

Colleagues note her superior attention to details, budgeting and deadlines, for the entire department as well as her own work. They also appreciate her ongoing efforts towards staff morale with many a compliment, card and sense of humor.

Russell has served on numerous college committees and campaigns in addition to the Classified Professional Development Team. Among the most notable are her past leadership of the United Way campaign and her current work on the Joint Review Committee. Off campus, she devotes time to the Very Little Theater and other groups.

College Council report

Review at a prior College Council meeting on changing Board of Education policy to allow for disposal of surplus property via a third party liquidator spread to discussion of procedure at the Oct. 27 meeting. It was decided that Dick Hillier, Ted Kotsakis and Jane Russell would get together and hammer out the procedures. In the meantime, the policy change was approved to be submitted to the board for a first reading. Also approved to go to the board was policy on the president's contractual authority.

Richard Null, a guest at the meeting, stated frustrations with the computer conversion. Linda Loft said that compared to the conversions we did in 1973 and the mid-80s, this one is by far the biggest. Many Council members believe that the problems accompanying the conversion are probably normal for projects of this size and complexity. The nature of the project also means some problems cannot be anticipated, requiring the flexibility to learn as you go. The real need is for better communications, Council agreed. President Moskus suggested that conversion staff work with The Daily to provide more coverage in the newsletter. He also suggested that the Computer Implementation Committee consider changing its Monday morning meeting time to afternoons, which would accommodate more faculty who wanted to attend the meetings to get information. Dick Hillier advocated talking directly with the person whom you think has the information you need. Loft said more staff training would help, too.

Other items on the agenda were postponed. The next meeting will be Tuesday, Nov. 17, from 3-5 p.m. in the Board Room.

Speaker

Alan Siporin, KLCC "Live Wire" host and National Public Radio reporter, will speak to Steve Candee's American Government classes on Friday, Nov. 6, at 1 p.m. and 2 p.m. in Center 402. His topic: The Media, Elections, and the Presidential Debates. Guests are welcome.

Computer conversion update

To help keep staff abreast of the latest developments in the mainframe computer conversion process, the following update is offered.

How long is this going to take?

"There will be continuous changes during and after the initial installation, which will take one to two years," says Vice President for Administrative Services Dick Hillier. "We're now in the second quarter of the process."

What's been done so far?

Ten major databases were created this summer with millions of data elements mapped into them to provide the basis for program development. Once those were in place, the following projects were tackled and completed:

- **ClassLine**, a fundamental of student success, was converted for summer term. This operation was not unlike a heart transplant. It gave the college a whole term of registration before the old mainframe actually was removed.
- The fall **class schedule**, another fundamental of student success, was converted. This was an enormous single task involving the collaboration of many people.
- **Financial Aid** conversion.
- **Payroll**, a fundamental of employee success, was converted. Some errors resulted but were remedied at once by Financial Services staff.
- **Training sessions** for 200 staff were conducted including instruction on registration holds, E-Mail, administrative drops, and general use of the new system.
- **Microcomputers** were installed for 200 staff. Data from old microcomputers was converted to the new ones.
- **Communications cable connections** to the new mainframe were completed on schedule, with a lot of help from Campus Services staff.
- **Communications to the Downtown Center** were improved with the addition of 16 access ports.
- Six new **system printers** were added across campus to facilitate campus information delivery.
- **Other achievements** include the teacher list; administrative withdrawal procedure; ABE database; computer lab fees; DAM report; Continuing Education DAM report; Continuing Education database and information system; grade collection forms; monthly PERS report; quarterly payroll reports; PERS tape; transcripts; Social Science lab instructional package; student schedules; veterans schedule; and complete registration holds system.

What's in progress right now?

Computer Services currently is working on these tasks:

- Fourth week enrollment reports.
- Various reports for research and planning.
- Quarterly employment reports.
- Global address and social security number changes.

What's next?

After the above tasks are completed, Computer Services will move on to these projects:

- Financial aid special reports.
- Various personnel and payroll reports.
- Financial services reporting.
- Equipment inventory.

In the meantime...

Hillier says the stress level is high not only from the conversion but from the many other changes affecting Lane right now: Measure 5, uncertain funding, statewide education reform, increased demand, and shared decision making, among others. He encourages asking questions or expressing concerns directly with whomever you think has the answer. He also recommends attending the Computer Implementation Committee meetings every Monday morning from 9:30-11 a.m. in the Board Room to ask your questions.

Classified Council report

Five classified staff have been recruited to serve on the Accreditation Steering Committee, it was announced at the Oct. 28 Classified Council meeting. They are Vicki Hamar, Bookstore; Mary Cudney, Library; Betty Dorris, ASLCC Legal Services; Della Mathews, Food Services; and Nancy Oster-Courtney, Financial Services.

Council heard a presentation on the Institutional Effectiveness Measurement Plan by Research, Planning and Evaluation Director Julie Aspinwall-Lamberts. She said all interested staff are welcome at the next Institutional Effectiveness Measurement Task Force meeting on Nov. 18 and may call her at ext. 2576 for details. Oregon Student Public Interest Research Group (OSPIRG) representative Joelle Cacciatore presented the organization's history and current goals. Reports were heard from Faculty Council and College Council as well.

All interested staff are welcome to attend Classified Council meetings to gather or deliver information. The next meeting will be Wednesday, Nov. 18, from 3-5 p.m. in PE 205. Gloria Jarvis, ext. 2604, will facilitate.

Deadlines - Deadline for The Daily is 12-noon of the day prior to publication on Mondays, Tuesdays, Wednesdays, and Thursdays. Submissions must be made in writing and include first and last name, department, and extension number. Send to The Daily in intercampus mail or deliver to Admin. 210. All items will be published at least once and repeated only if space permits. New items receive priority. The Thursday issue features shared decision-making news.

The Daily

Edited by Joan Aschim

Published for the staff of Lane Community College

747-4501, ext. 2591

Monday, November 9, 1992

Seventh week of fall term

This week:

- Administrative Services managers meeting, Tuesday, Nov. 10, 8:30-10 a.m., PE 205
- Veterans Day holiday, Wednesday, Nov. 11. The college will be closed.
- Multi-Cultural Center Social Hour, Thursdays at 1:30 p.m., Center 409
- Faculty Council, Thursday, Nov. 12, 3-4:30 p.m., Board Room
- Community & Economic Development Cabinet: Nov. 16 meeting postponed to Nov. 23, 1:30-3:30 p.m., Board Room

Speaker will discuss economics and women

Helen Lewis of the Highlander Institute, a grassroots economic development organization, will speak in Patsy Raney's Women's Studies class on Tuesday, Nov. 10, from 11:30 a.m. to 1 p.m. in Forum 308. Her topic: "Women and Economic Literacy."

Lewis also will meet informally with interested staff from 2:30-4 p.m. in the Women's Center, same day, to discuss how to set up economic education programs for women, and to describe her work organizing women in Appalachia. Visitors are welcome to attend both events.

Teleconference will present tech-prep strategy

"Building Teams for Tech-Prep" is the topic of a teleconference to be held Tuesday, Nov. 10, from 10:30 a.m. to 12-noon in Center 10. It will offer strategies and models for integration of academic and technical education between secondary and post-secondary sites. It's free. For more information, contact Judith Gabriel in College High/2+2 at ext. 2699.

Speaker will discuss inner peace

Tim Blood of Counseling will talk about "Inner Peace" on Tuesday, Nov. 10, from 7:15-8:30 p.m. in Center 449, in Jerome Garger's Peace & Conflict Studies class. Guests are welcome.

Scholarship offered

A \$500 scholarship for winter term 1993 is available for full-time students with disabilities. The deadline to apply is Nov. 20. Applications are available at Disabled Student Services.

Nursing program information to be presented

Nursing program information will be presented on Wednesday, Nov. 18, at 1 p.m. in Forum 308. Questions will be taken. Students accepted for fall 1993, those intending to apply for fall 1994, and other interested individuals are welcome to attend.

Seminar will examine historic Japanese-American experience

The Issues in Cultural Diversity seminar series continues Nov. 10 with "World War II Internment Camp Experience for Japanese-Americans." The seminar will be held from 3-4:30 p.m. and 5:30-7 p.m. in Apr. 223. Staff may audit or register for credit through Social Science. For more information contact Vicki Levine at ext. 2074.

Resource guide will share special interests, talents and expertise

If you have an area of special interest, talent or expertise that you'd be willing to share with other staff and faculty, please contact Linda Myers in Cooperative Education at ext. 2883. She is putting together a staff resource guide on behalf of the Faculty Professional Development Team, the International-Intercultural Committee, and Institutional Advancement. Information need not be limited to your profession but can include hobbies, travels or other ideas. Deadline is Nov. 13.

Holiday hosts needed for international students

Volunteer hosts are needed to host LCC international students for Thanksgiving, Christmas and New Year's Day. If you can add one or more students to your dinner list, contact Pat Williams, International Students Community Program, ext. 2165, for an assignment.

All-staff roundup announced

Kick off your shoes, put on your cowboy boots (or tennies or slippers) and jeans, and come to an evening of Western line dancing sponsored by the Faculty Professional Development Team (see attachment). No partner is necessary. LCC's own line dance instructor, Nancy Anderson, will show you how. The event is free and includes refreshments and door prizes, including a free night at Driftwood Shores. Intermission entertainment will be provided by Tom Birkenhead. All management, classified and faculty employees are invited to join in on Friday, Nov. 20, from 7-10 p.m. in the Cafeteria. - Linda Myers, Cooperative Education, ext. 2883

Women's discussion group to meet

A brown bag women's discussion group will be held Wednesday, Nov. 18, from 12-2 p.m. in PE 205. The group will be facilitated by Clara Lindstrom of the Multi-Cultural Center and Sexual Assault Support Services of Lane County. Interested staff may call ext. 2276 for more information.

Challenge issued to all departments

Student Activities has "adopted" a family for Thanksgiving and will provide a meal and all the fixin's. We challenge all other departments to do the same. Make the holidays special for someone in need. We're a small department; if we can do it, you can too! Contact Jill Bradley in the Women's Center at ext. 2298 or Marna Crawford in Campus Ministries at ext. 2814 for information about families in need. - Student Activities staff

JOBS

Nurse Practitioner, temporary from 11/92-6/15/93, Faculty, closes 11/16.

ADS

DBASE upgrade: If you're using dBase III and would like to upgrade to dBase IV 1.5, I have two upgrade certificates for \$99.95, a \$700 savings. If interested call Joan Adams, Job Placement Office, ext. 2326.

FOR SALE: Ping-Pong table, \$40. Julie Baker, ext. 2199.

WANTED TO BUY: Violin and bow, or bow alone. John Winqvist, Counseling, ext. 2870; or 344-1125.

CHRISTMAS SHOPPING FOR THE PERSON WHO HAS EVERYTHING? Why not buy them a champagne pink 1977 Thunderbird? Low miles, high luxury! Pre-holiday sale priced at \$1999.95 for LCC staff and anybody they know. Call Sarah LaMaster, I.A., ext. 2312 or 484-4913.

FOR ALMOST GIVE-AWAY: Engine stand. Get that motor off the floor where you can work on it. Yours for only \$32.95. 15% discount with this ad. Roxanne Flowerday, Study Skills, ext. 2440; or 747-1423.

PRETTY CHEAP: Oak wall mount rifle rack--just like Dad used to have. Unlimited possibilities...a fish pole holder, a towel rack, an umbrella rack. Buy now for only \$3.82 or a dozen flower bulbs. Call now! Supply limited. Roxanne Flowerday, Study Skills, ext. 2440; or 747-1423.

WANTED: Youngster(s) to rake leaves; roughly 16 hours of work; anytime from Nov. 11-15; Camp Creek Road area, Springfield \$3 per hour. If you know of anyone interested, please ask him/her to call me; thanks. Lloyd Rain, Purchasing, ext. 2208; home 726-2000.

ARE YOU WAITING TO GO SOMEWHERE FOR WINTER VACATION? I have a certificate that will pay for two nights in a four-star hotel in a variety of national and international resort locations. Reservations must be made at least a month in advance. Market value is \$275; selling for \$150 or best offer. Call for details. Liz Coleman, ABE, ext. 2919; or 683-4384.

FOR SALE: Girl's bike, \$10. Women's bike, needs new tires, \$10. Children's attached school desk and chair, \$15. Sally Meadow, Student Activities, ext. 2336.

FOUND at Emerald Valley Inn on Oct. 29: ladies blue umbrella. Julie Baker, ext. 2199.

HOLIDAY ART SALE, Saturday, Dec. 5, 4270 North Shasta Loop, 10 a.m.-6 p.m. Lisa Henry and Cheryl Kempner have created ornaments, porcelain bowls, hand-painted silk scarves, porcelain and glass earrings, pins and necklaces, paintings, porcelain angels and painted shirts. Contact Cheryl for a map, ext. 2844, Study Skills.

FOR SALE: COZY AND COMFORTABLE SOFA, perfect for the family room. Contemporary style in beige tones with five matching pillows. Great for relaxing. \$85. Ginny (Nelson) Reich, ext. 2426, E,FL&S; or 686-8188.

DEADLINE FOR THE DAILY is 12-noon of the day prior to publication on Mondays, Tuesdays, Wednesdays, and Thursdays. Submissions must be made in writing and include first and last name, department, and extension number. This information is required to be printed with ads. Ads are free and limited to staff. Send to The Daily in intercampus mail or deliver to Admin. 210. All items will be published at least once and repeated only if space permits. New items receive priority. The Thursday issue features shared decision-making news.

MAIN CAMPUS CAFETERIA

	MONDAY	TUESDAY	WEDNESDAY	THURSDAY	FRIDAY
SNACK BAR	MEXICAN MACARONI	BEEF ENCHILADA	MACARONI & CHEESE	CHICKEN POT PIE	GRILLED TUNA ON RYE
SUPP	WAIVERLY CHEESE BEEF SOUP CHILI	COOK'S CHOICE CHILI	SPINACH CELERY THREE BEAN CHILI	TOMATO ONION BEEF BARLEY CHILI	SEAFOOD CHOWDER COOK'S CHOICE CHILI
MAIN ENTREE	TURKEY WITH DRESSING HAM & BROCCOLI BAKE 3 CHEESE SANDWICH	PORK CHOP & RICE PILAF MEXICAN CASSEROLE PIZZA	BEEF BURGUNDY CHICKEN POT PIE PASTRAMI & CHEESE	BAKED HAM & PINEAPPLE TAMALE PIE MONTE CRISTO	BAKED COD WITH BREADCRUMB TOPPING CHICKEN A LA KING PHILLY BEEF
VEGGIE	MONTEREY QUICHE	MACARONI & CHEESE	VEGGIE LASAGNA	SPINACH TOMATO BAKE	CHINESE SPAGHETTI
MINI	BEEF ENCHILADA	HAWAIIAN MEAT BALLS	STIR FRY WITH TURKEY	TURKEY TETRAZZINI	NOODLE DELIGHT
VEGETABLES	MEXI CORN BROCCOLI	SPINACH YELLOW SQUASH	ASPARAGUS CARROTS OBRIEN	BRUSSELS MIXED VEGETABLE	GREEN BEANS CREAM CORN

The Daily

Edited by Joan Aschim

Published for the staff of Lane Community College

747-4501, ext. 2591

Tuesday, November 10, 1992

Seventh week of fall term

Board chair works to make workforce efforts succeed

How is Oregon going to produce the best educated and best prepared workforce in America by the year 2000? How is Lane going to help? You might ask Board of Education Chair Pat Riggs.

She represents the college on the Lane Regional Workforce Quality Committee along with President Jerry Moskus. She is vice-chair of its Service Delivery Agreement Subcommittee. Vice President for Community and Economic Development Larry Warford also serves on that subcommittee, as a community member. LRWQC is the local arm of the Oregon Workforce Quality Council.

The council was established by the Workforce Quality Act of 1991. The council proposes consolidating under one agency the state administration of community colleges, corrections education, Job Training Partnership Act, dislocated worker programs, professional-technical programs, welfare reform programs, the Trade Adjustment Act, apprenticeship, and Job Corps. That agency would be the state Department of Community Colleges and Workforce Development.

The local committee has three responsibilities: to advise the state council on issues relating to local workforce development needs; to prepare an annual local strategic workforce plan; and to coordinate local employment training, education and job placement services. "We're a planning group, not a governing group," says Riggs. "We'll help the local agencies, each with their own specialty, coordinate their services." Those agencies include LCC, the Southern Willamette Private Industry Council, K-12 schools, UO, Adult and Family Services, Employment Division, the county, businesses, unions and apprenticeship programs.

Riggs' volunteer civic service and employment history have prepared her well for this work. She has been an LCC board member for nearly four years serving this year and last as chair. She has worked as a youth services assistant since 1989 for SWPIC. SWPIC and LCC are represented on the committee and are partners in the local Dislocated Worker Program. Riggs also serves on the Lane County Labor Council, the state Public Employees Retirement System board, the local executive board of the American Federation of State, County and Municipal Employees, and the Springfield District 42 Democratic Party.

Riggs has a daughter, son, and two grandchildren. Her son will attend Lane next year.



Pat Riggs

Workshop examines affirmative action at Lane

Donna Albro will discuss affirmative action issues at Lane in the next "Thursdays at 3:00" classified professional development workshop on Nov. 12 in Business 203. She will explain what the affirmative action office does, where it is, and how to access its services. - Julie Baker, ext. 2199

Deadline nears for management personal and professional development

The deadline to submit management personal and professional development applications to the Management Personal Development Committee is Nov. 13. The committee meets Nov. 19 to review requests. Call Lloyd Rain in Purchasing at ext. 2208 for forms and guidelines.



1992/93 Directory

1992/93 staff directories are now available

Copies of the 1992/93 staff directory are available for pick up from Institutional Advancement beginning today. As an added feature this year you have the option of having your directory spiral bound. Let us know your preferences when you pick up the directories for your department. - Angela Miller, ext. 2268

Printing/Graphics needs your work orders

Printing/Graphics would appreciate your keeping these two dates in mind: Dec. 2: Submit work orders for books, modules, and packets for sale in the Bookstore, so we can meet their deadline of Dec. 16; and Dec. 9: Submit work orders for materials due the first day of winter term.

Resume and job search workshops offered

The Job Placement Office will hold resume and job search workshops Nov. 18 and Dec. 9 from 4-6 p.m. in Forum 310. An interviewing workshop will be held Dec. 2. For more information or to register, contact Diane Morrow at ext. 2164.

Jim Denney exhibit to open

"Jim Denney--Paintings" will show at the Art Department Gallery from Nov. 16 through Dec. 11. The artist will lecture on his work on Tuesday, Nov. 17, at 10 a.m., and a reception will be held on Friday, Nov. 20, from 7:30-9:30 p.m., both in the gallery.

Denney's work depicts the effects of man on nature, particularly in the Northwest. The painting "Tower," for example, profiles a radio transmitter among the firs. Another, "T.V.A. Dam," shows the devastation of hydroelectric development on natural topography. Denney is a native Oregonian and a third-generation forester. He lives in Eugene and maintains a studio in McKenzie Bridge. He has shown in exhibitions from Oregon to New York. He has been awarded a National Endowment for the Arts fellowship and has taught at Carnegie Mellon University.

The artist's lecture is sponsored by ASLCC.

The Art Department Gallery is located on the first floor of the Math & Art Building. Hours are Monday through Thursday from 8 a.m. to 10 p.m. and Friday from 8 a.m. to 5 p.m.

Student needs help forming scuba club

Student Tim Foust is trying to form a scuba club and needs a staff advisor. Prior scuba experience would be helpful. If interested, leave a message for Foust at 683-0882.

Film production program at Lane cited best in Oregon

Film production instruction at Lane is "the best current program" in the state, said consultants who prepared a report for the Oregon Economic Development Department. OEDD has cited film and video production as a key industry for Oregon. Lane offers 8mm and 16mm production and video editing with SMPTE time code, an industry norm that is not widely taught.

In a recent insert in Oregon Business magazine titled, "Film & Video in Oregon: A Key Industry Profile," Media Arts instructor/coordinator Bob Prokop advocates education as a key component of developing the industry: He says, "the potential for a lot more people to do well is out there, and it's up to us to give them the credentials...." For more information about film and video instruction at Lane, call Prokop at ext. 2472.

Tamara Pinkas wins accolades from public safety department

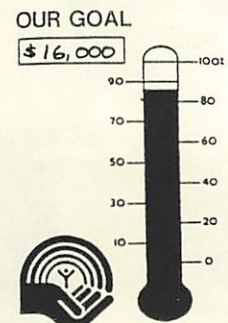
Tamara Pinkas of Training and Development has received written accolades from the Eugene Department of Public Safety Records for her "outstanding performance in coordinating the Cooperative Education assignments." She is credited with having developed the site for co-op students. "Tamara has been particularly skilled at matching the right individuals to our specific needs ... in this mutually beneficial cooperative program," wrote a department supervisor.

Holiday silent auction offers refreshments

The AAWCJC Holiday Silent Auction will be held Tuesday, Nov. 17, from 5:30-7:30 p.m. at Judith Watt's home in southeast Eugene. Auction items include dinner for two, lunch in the Renaissance Room, house cleaning service, holiday wreaths and more. RSVP by Nov. 13 and get directions by calling Watt in Training & Development at ext. 2503.

United Way needs a few more contributions

The United Way campaign has reached 87 percent of goal with \$13,844 in donations. If you haven't contributed, please help us make our \$16,000 target. Send your completed claim form to your employee group coordinator or call Lloyd Rain at ext. 2208 if you need information. Coordinators are Diane Engle in Counseling at ext. 2299 for classified; Annick Todd in ESL at ext. 2253 for faculty; and Lloyd Rain in Purchasing at ext. 2208 for management.



November conferences

For more information about the following workshops call Julie Baker at ext. 2199.

- Forty-sixth annual convention of the Oregon School Boards Association, Nov. 13-15, Portland, \$105 plus meals.
- Implementing Self-Directed Work Teams, CareerTrack, Salem, Nov. 17, \$99.
- Managing Multiple Priorities, Eugene, Nov. 30, Eugene, \$125.

ADS

FLORIDA CITRUS FRUIT SALE: Enjoy delicious navel oranges and red grapefruit while you support the Oregon Children's Choir. Orders will be taken through Nov. 17 and delivered Dec. 5. Prices: Navel oranges, 20 lbs. for \$13 or 40 lbs. for \$23.50; red grapefruit, 20 lbs. for \$12 or 40 lbs. for \$21.25. Colleen Cairney, ITD, ext. 2843.

FOR SALE: TWO 13-inch 175/70 Firestone studded tires mounted on wheels, and two 13-inch studded tires, 175/70, unmounted. Velma Jesser, ext. 2018, Business.

NEW CAR ON THE WAY! Must sell 1985 Ford Mustang. V4, automatic, cruise control, sun roof. 92,000 original miles driven by careful, non-smoking LCC staff member. All maintenance records available. Get it before a dealer does for only \$2000. Leave message at 746-5866. Gloria Jarvis, Fin. Svcs., ext. 2604.

Deadlines - Deadline for The Daily is 12-noon of the day prior to publication on Mondays, Tuesdays, Wednesdays, and Thursdays. Submissions must be made in writing and include first and last name, department, and extension number. This information is required to be printed with ads. Ads are free and limited to staff. Send to The Daily in intercampus mail or deliver to Admin. 210. All items will be published at least once and repeated if space permits. New items receive priority.

The Daily

Edited by Joan Aschim

Published for the staff of Lane Community College

747-4501, ext. 2591

Thursday, November 12, 1992

Seventh week of fall term

Board, council and branch meetings

- Faculty Council, today, Nov. 12, 3-4:30 p.m., Board Room
- Community & Economic Development Cabinet, Monday, Nov. 16, 1:30-3:30 p.m., Board Room
- Administrative Services managers, Tuesday, Nov. 17, 8:30-10 a.m., PE 205
- College Council, Tuesday, Nov. 17, 3-5 p.m., Board Room
- Student Services directors, Wednesday, Nov. 18, 9-10:30 a.m., Admin. 206
- Instructional Cabinet, Wednesday, Nov. 18, 1:30-3 p.m., Board Room
- Classified Council, Wednesday, Nov. 18, 3-5 p.m., PE 205

Faculty Council agenda highlights

Faculty Council meets today from 3-4:30 p.m. in the Board Room. Highlights on the agenda are a report on the full-time/part-time faculty ratio, and what issues the council should address.

Board report

The Board of Education appointed Lon Mills as its representative in **faculty negotiations** for "\$8,500 plus reasonable actual expenses" at its Nov. 4 meeting. The 5-0 vote reflected board member Chuck Ivey's absence and board member Roger Hall's declaration to abstain from votes regarding faculty negotiations due to a conflict of interest created by his wife's membership in the faculty union.

Board member Larry Mann appointed Mark Ringsdorf, a financial staff person at Bi-Mart, to an at-large seat on the **Budget Committee**. The post became vacant June 30 when Scott Carpenter's term expired.

A contract to EMK Mechanical Contractors for \$31,900 for **emergency mechanical piping work** was approved.

The **retirements** of William C. Buskirk of Science and Richard C. Coalwell of Mathematics were approved effective Dec. 31.

The evening of Nov. 23 was set for a combined meeting with College Council and Executive Cabinet to discuss **shared decision making**.

The board will meet at 5:30 p.m. on Dec. 9 to hear information about **South Lane School District** plans to build a new high school with a proposed bond measure for Sept. 1993. The district has invited the college to consider including a new center in the proposal.

The board decided to review selected **board policy revisions** in a series of evening sessions preceding regular board meetings.

The college made more and spent less than budgeted for 1991-92, according to an unaudited **financial report**. We're ahead by about \$130,000 thanks in part to a higher-than-projected tax collection rate and an increase in enrollment tuition revenue.

President Jerry Moskus reported that Vice President for Student Services Linda Fossen has created a community-wide committee to recommend the expenditure of the **student housing** settlement announced last month. He also reported that Vice President for Community and Economic Development Larry Warford and other delegates to Washington D.C. this summer may have won more money for **aviation program** expansion via a Housing and Urban Development bill for worker retraining at community colleges. "Our hope is that there's a million in it for us," Warford added.

First readings were held for two board policy revisions. Proposed is revision of the **disposal of surplus property** policy to enable the college to dispose of property through an outside service and to eliminate procedural language from the policy; and revision of the **contractual authority of the president** policy to permit the president to authorize contractual agreements up to \$50,000 for projects not governed by public bidding laws.

The board acknowledged the **college plan** for 1992-93.

Electronics Department Head Bob Vogel gave a League for Innovation in the Community College **multi-media presentation** to the board.

Athletic Director Harland Yriarte packed the Board Room with the coaches and players of the men's and women's 1992-93 **basketball** teams who introduced themselves. The board gave its blessing for another successful season with a round of applause.

ASLCC President Bill Hollingsworth said he is investigating a new hi-tech student ID card and the policy on the loudness of outdoor entertainment.

The next regular board meeting will be Dec. 9 at 7:30 p.m. in the Board Room.

Nominations due

Attached to today's Daily is the nomination form for Classified Employee of the Month for December. They're due Nov. 16 to Community and Economic Development. You don't have to wait for the reminder; submit a nomination form anytime. Only completed forms will be accepted; no attachments. - Debbie Powers, ext. 2120

Closed

Financial Aid is closed all day today for in-service.

Manager's Forum report

Presentation of a **new system for evaluating managers** was the main agenda item at the Nov. 6 Manager's Forum meeting. A committee charged with developing and proposing a system is nearing the end of its work. The new system will be phased in and will include an annual evaluation of each manager that includes a self-assessment, assessment by their supervisor, and assessment by those they supervise. The reasons for evaluation: 1) To communicate expectations; 2) To develop a better match between individual actions and institutional goals; 3) To improve performance; 4) To improve working relationships; 5) To enhance job satisfaction.

Developing the new evaluation system are Joan Adams, Donna Albro, Gary Anderson, Larry Brown, Sue Colvin, Dan Hodges, Pat John, Christine Krygier, Marie Matsen, Sue McDonald, Sharon K. Moore, and Tom Wayne.

In other business, managers discussed the **computer conversion**, and a proposal from **South Lane School District** in Cottage Grove to share a new facility to be built by South Lane.

Manager's Forums are conducted by the president and include presentations by the vice presidents and other managers. They meet monthly, generally on the Friday following Board of Education meetings.

Faculty Council report

Faculty Council last met Oct. 22. (They meet again today at 3 p.m. in the Board Room). Members discussed the board policy revision on **overload classes** with Vice President for Instruction Jim Ellison. The revision would require vice presidential consent for overload classes and provide flexibility in assigning overloads where needed in cooperation with department managers and instructors.

In other matters, council expressed concern that the contingency **budget reduction criteria** may fail to adequately recognize the comprehensive mission of community colleges. Allan Kluber suggested a tenth criteria: "Contributes to the social, cultural and artistic health and vitality of the community." Being too late in the process to add criteria, council decided to express its concerns in a letter to the vice presidents.

It was not too late to forward comments about the **Institutional Effectiveness Measurement Plan**, however. Council decided to suggest adding two more criteria to it: Benchmark to provide measure of faculty morale; and 2) Benchmark for feedback from current students as well as alumni.

Council again discussed the **full-time/part-time faculty ratio**. A committee working on the issue will gather information from departments considered to be most in need. The true financial impact of full-time and part-time hiring may also be investigated.

Martin Luther King in-service being planned

Those interested in planning Martin Luther King Day in-service activities are invited to attend a meeting on Monday, Nov. 16 at 3 p.m. in PE 205. - Julie Baker, ext. 2199

OSPIRG sponsors hunger and homeless awareness week

The Lane chapter of the Oregon Student Public Interest Research Group is sponsoring "Hunger and Homeless Awareness Week" Nov. 16-20. Participation is invited through donations of canned foods, blankets, clothing, money and hygiene products. Speakers and bands are scheduled through the week in the Cafeteria. Spread the word. - Joelle Cacciatore, OSPIRG, ext. 2166

Gym reserved for volleyball championships

Gym 202/203 will be closed to staff on Thursday and Friday, Nov. 19 and 20, for the OSAA state high school volleyball championships hosted by Lane.

ADS

LIVE TONIGHT: Thank you to everyone for expressing your support and interest; you can come see me perform for Comedy Challenge tonight, Nov. 12, at Kowloons/Scandals on Centennial. I'll probably go on second, so arrive at 8 p.m. sharp. Comedy Challenge is sponsored by KMTR for the Jay Leno show. Lorna Funnell, Cont. Ed., ext. 2906.

FOR SALE: 1990 HONDA CIVIC SI HATCHBACK. 38,000 miles. Red, moon roof, cassette deck. One owner, all records. High blue book \$9,250. A steal at \$8,300. This is a great little car! Tricia Hahn, ext. 2395, Soc. Sci., home 342-2570.

FOR SALE: '87 CAMARO sport coupe, EFI, power steering, cruise, air, AM/FM stereo cassette, tilt, red with black interior, \$4,795. Joe Farmer, Foundation, ext. 2810; or Cindi Farmer, Media Arts, ext. 2475; 345-3511.

FOR SALE: SCHUBACH VIOLIN and German made bow. Excellent tone. Sally Meadow, Student Activities, ext. 2336.

QUEEN-SIZE WATERBED (incomplete) with 12 storage drawers. \$150. Julie Baker, CED/IA, ext. 2199.

IT'S NOT PRETTY BUT IT IS RELIABLE. 1981 Datsun pick-up, king cab, jump seats, air, AM/FM, automatic transmission, good tires, new brakes, 145,000 miles and still going strong. Would make a great commuter vehicle (25 mpg) or carry-all for small acreage. \$1,000 OBO. Bob Boettcher, Science, ext. 2446, or 683-4918.

HOUSE TO SHARE for woman over 30. Sunny 3-bedroom, woodstove, hardwood floors, garage, large yard with veggie garden. Available Dec. 1 for clean, friendly, health-conscious woman. \$250 + half of low utilities. Marissa Linn, 344-7411. (ESL, ext. 2253.)

Deadlines - Deadline for The Daily is 12-noon of the day prior to publication on Mondays, Tuesdays, Wednesdays, and Thursdays. Submissions must be made in writing and include first and last name, department, and extension number. Send to The Daily in intercampus mail or deliver to Admin. 210. All items will be published at least once and repeated only if space permits. New items receive priority. The Thursday issue features shared decision-making news.

The Daily

Edited by Angela Miller

Published for the staff of Lane Community College

747-4501, ext. 2591

Monday, November 16, 1992

Eighth week of fall term

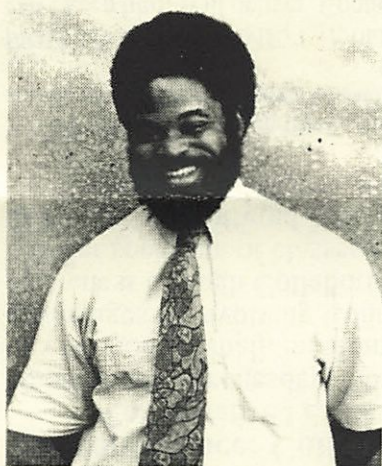
This week:

- Community & Economic Development Cabinet: Nov. 16 meeting postponed to Nov. 23, 1:30-3:30 p.m., Board Room
- Administrative Services managers, Tuesday, Nov. 17, 8:30-10 a.m., PE 205
- College Council, Tuesday, Nov. 17, 3-5 p.m., Board Room
- Student Services directors, Wednesday, Nov. 18, 9-10:30 a.m., Admin. 206
- Instructional Cabinet, Wednesday, Nov. 18, 1:30-3 p.m., Board Room
- Classified Council, Wednesday, Nov. 18, 3-5 p.m., PE 205
- Management Evaluation Subcommittee, Friday, Nov. 20, 8:30-10 a.m., Center 8.

Professional technical program evaluation orientation session

Staff from the Oregon Department of Education and LCC will conduct an orientation to the winter term state-mandated review of all of LCC's professional technical programs. This review is a requirement for all institutions receiving Carl Perkins Vocational Education Act funds. All staff members newly assigned to one of the seven Program Improvement Teams that are responsible for overseeing the program self-study reviews are to attend this session. For further information call Larry Brown, ext. 2580.

Mark Harris is new program coordinator



Mark Harris joined Lane in July as the new substance abuse prevention coordinator. He provides students and staff with services which assist in resolving substance abuse and related issues such as recovery, co-dependency, suicide, etc. The program supports the college and all departments by monitoring compliance with federally mandated alcohol and other drug laws. These mandates affect both staff and students. His experience in the field of alcohol and drug abuse prevention and treatment dates back to high school employment.

Most recently he worked for both the US Dept of Education's Northwest Regional Education Lab in Portland from 1989-91. From 1991 to the present he has provided community partnership trainings and curriculum development as an independent contractor. Clients included the U.S. Office of Substance Abuse Prevention and the Oregon Dept. of Education, among others. Locally he has provided services to Churchill High School and Whitebird Clinic.

JOINT CLASSIFICATION STUDY

The Joint Review Committee met Nov. 5 and reviewed more class descriptions. They covered communications/data specialist, costume designer, custodian I, groundskeeper, lead groundskeeper, and groundskeeper/equipment operator. Additional class descriptions relating to coordinator positions are being held so that they may be evaluated in relationship to one another.

To date, 78 class descriptions have been prepared by Personnel from the information provided by individual employees. The information came from the job description questionnaires prepared by employees and from desk audit interviews conducted by Deb Andereggen of Personnel. The 78 descriptions involve about 226 actual positions. There's more to be done, "but we've come a long way," say JRC members. Additional open meetings will be scheduled as descriptions for entire job families are completed. Stay tuned.

Andereggen and Joan English have worked very hard and very closely with the JRC. I would like to applaud their efforts and thank them for their ongoing work with this complex process. - Jane Russell, Chair, Joint Review Committee

Boise Cascade products to be displayed

Are you interested in the latest office products on today's market? New merchandise will be shown to all Boise Cascade office products users at the Valley River Inn on Wednesday, Nov. 18, from 1-6 p.m. There will be 30 to 40 vendors available to talk to you. All products shown will be available in the 1993 Boise Cascade catalog. This will be a great opportunity for you to see what's available and how it works. Questions? Call Steve Evans in Purchasing at ext. 2453, or Boise Cascade rep Karen Evans at 344-9510, ext. 628.

Addition to staff directory

Please add Sharon McCarroll, ext. 2214 to page 4 of your 1992-93 staff directory in the Adult High School section and on page 56 in the alphabetical section. Also, please change Bob Lane, Electronics Dept. extension from 2459 to 2033 on pages 17, 46 and 55.

Call for proposals

Leadership 2000 will be held July 18-21 in Washington D.C. It is the fifth annual international conference on leadership development in community colleges sponsored by the League for Innovation in the Community College and the Community College Leadership Program at the University of Texas at Austin. Proposals for forums or round tables are due December 11 at the League office. For a brochure or more information, contact Larry Warford, League representative, at ext. 2302.

Instructor from Siberia to speak

Joe Kremers, LCC Political Science instructor, and Luda Shamanskaya, English teacher at the Language Institute in Irkutsk, Siberia will speak in Jerome Garger's Peace and Conflict Studies class on Tuesday, Nov. 17, from 7:15 to 8:30 p.m. in Center 449. Their topic: "The Ex-Evil Empire - USSR: What's Happening?" Guests welcome.

Hunger and Homelessness Awareness Week

OSPIRG's Hunger and Homeless Project Group has put together an awareness week, Nov. 16-20, in an effort to increase awareness of the problem and to collect all types of donations for those in this situation. Donations can be brought to the cafeteria each day this week from 11:30 a.m. to 2 p.m. Various speakers and performers will be on campus to support this project. For more information contact Joelle Cacciatore at ext. 2166.

Change in HMO and vision carriers

On Jan. 1, 1993 the College will change its HMO provider to The Managed Care Network (Capitol Health Care) and the Vision coverage to Blue Cross and Blue Shield of Oregon. This change will affect ALL employees who currently have SelectCare medical coverage and Vision Service Plan.

Packets containing information for The Managed Care Network and Blue Cross and Blue Shield of Oregon vision are being sent to each employee in their department. If you do not receive a packet and/or have questions about the changes, please call Marie Nelson, ext. 2590 or Joan English, ext. 2468.

Teleconference: Collaborative Learning II

Collaborative Learning II: Design and Implementation, a live interactive videoconference, will be presented Wednesday, Nov. 18 in Center 10 from 10-11:30 a.m. Participants will learn ways to use this method in small, medium and large classes, strategies for involving all class members in tasks, some advantages of involving Counseling in Collaborative Learning projects, ways to enhance multicultural awareness through Collaborative Techniques, and how to implement Collaborative Methods across the broader spectrum of classes from developmental to advanced. The teleconference, Collaborative Learning I was offered Nov. 20, 1991 and is on reserve in the library. - Julie Baker, ext. 2199

ADS

WANTED: Small pickup truck. Automatic transmission a must. \$1,500-\$3,500 range. Interested in one without stale tobacco smoke smell. Prefer Toyota, but will consider Mazda, Nissan or Mitsubishi. Joe Freeman, Co-op Ed., ext. 2203 or 344-6468.

FREE TO GOOD HOME, 1 yr. old (?) male cat. Black with white whiskers and feet. He wandered onto my front porch and I can't keep him. Will deliver. Contact Ann Augard, Computer Services, ext. 2865 or 687-8393.

FUZZ BALLS NEEDS HOME. Female kittens, 5 weeks old, powder gray, white socks. FREE to good home. Contact Cherrill Hemminger, Admissions, ext. 2207 or 746-1010.

Black, sliding steel mesh FIREPLACE SCREEN 38" wide x 31" high, \$20. Contact Laura Tamura, Pres. Office, ext. 2301.

LADIES LEATHER JACKET, worn two times, \$85; downhill skis, Dynastar & Solomon bindings, \$85; ski goggles, \$10; gloves, \$10; two sets of ski boots, \$45 each. All items excellent condition. Contact Patti Bonitz, Senior Companion Program, 683-8043.

Deadlines - Deadline for The Daily is 12-noon of the day prior to publication on Mondays, Tuesdays, Wednesdays, and Thursdays. Submissions must be made in writing and include first and last name, department, and extension number. This information is required to be printed with ads. Ads are free and limited to staff. Send to The Daily in intercampus mail or deliver to Admin. 210. All items will be published at least once and repeated only if space permits. New items receive priority. The Thursday issue features shared decision-making news.

MAIN CAMPUS CAFETERIA WEEK # 3

	MONDAY	TUESDAY	WEDNESDAY	THURSDAY	FRIDAY
SNACK BAR	CHICKEN A LA KING	BEEF CANTONESE	OPEN FACE SANDWICH	BEEF STEW	TURKEY STEW
SOUP	CREAM OF CHICKEN NOODLE BEEF TOMATO RICE CHILI	COOK'S CHOICE CHILI	POLISH SPUD CREOLE CHILI	HOLLYWOOD TURKEY BEAN PASTA CHILI	NEW ENGLAND CLAM CHOWDER COOK'S CHOICE CHILI
MAIN ENTREE	BREAST OF TURKEY FLORENTINE BEEF CANTONESE GRILLED HAM & CHEESE STACKED SANDWICH	SWISS STEAK PORK ALMONDEE' PIZZA	CHICKEN LASAGNA KULBASSY & CABBAGE BBQ BEEF SANDWICH	PORK CHOPS WITH DRESSING & GRAVY BEEF POTATO CASSEROLE TURKEY SWISS	CAPTAIN'S PLATTER SCALLOPED CHICKEN PIZZA BURGER
VEGGIE	COTTAGE POTATO QUICHE	BATTER DIPPED DEEP FRIED VEGGIES WITH CHEESE SAUCE	CORN FRITTERS	BROCCOLI SOUFFLE	CHEESE & SPINACH BITZEN
MINI	BEEF POT PIE	CHICKEN WINGS & RICE	BEEF STEW WITH CORNBREAD	TURKEY STROGANOFF	CRAB OR SHRIMP & BROCCOLI BAKE
VEGETABLE	CARROTS AND PEAS SPINACH	CORN BROCCOLI	CAULIFLOWER FRENCH CUT BEANS	MIXED BEANS BRUSSELS SPROUTS	BEAN MEDLEY HOMINY WITH PIMENTOS

The Daily

Edited by Angela Miller

Published for the staff of Lane Community College

747-4501, ext. 2591

Tuesday, November 17, 1992

Eighth week of fall term

College Council agenda

College Council will meet today, Nov. 17, from 3-5 p.m. in the Board Room. Meetings are open to all interested staff. Agenda highlights:

- 1993 Christmas holiday schedule
- Part-time faculty task force
- Safety policy
- Internal chargebacks
- Discussion of what items should be considered by College Council
- Shared decision making evaluation report
- Duplication task force reports on computer issues
- Facilities Management Committee

Classified and management open enrollment

Open enrollment begins Nov. 16. If you are interested in changing from one medical plan to another, or adding a dependent to your medical/vision or dental coverage, you may do so during open enrollment from Nov. 17 to Dec. 11. New enrollment forms may be picked up at the receptionist's desk in Personnel Services. All changes and additions received by Marie Nelson, Personnel Services, by 5 p.m. on Dec. 11 will be effective Jan. 1, 1993. Representatives from Blue Cross/Blue Shield and Managed Care Network will be available to answer any coverage questions on Nov. 23 and Dec. 2 from 9 a.m.-12 p.m. in PE 205.

New publications to be added to the Library

The President's Office has subscribed to the New Directions for Community Colleges series. Two new issues have just arrived: "Critical Thinking: Educational Imperative" (#77) and "Prisoners of Elitism: The Community College's Struggle for Stature" (#78). These issues will be available early winter term in the Library under call number LB2328.N473. The President's Office also bought volumes to fill out the collection for the last few years. Available now under the same call number are volumes 9, 32, and 36 through 76.

Teleconference to explore college leadership

A teleconference, "Achieving Leadership Diversity: Education's Challenge," will be shown Friday, Nov. 20, from 9:30-11 a.m. in Center 10. The program will focus on specifics: what the leader's role should be in advancing an institutional commitment to diversity, how to implement a valuing diversity program in a higher education setting, how to evaluate the effectiveness of your efforts over time. For more information contact Julie Baker at ext. 2199.

Volunteers provide valuable service to ABSE

Adult Basic and Secondary Education's 220 tutors accrued 10,262 instructional hours during the 1991-92 school year. These tutors volunteer their help in Adult Basic Education, General Educational Development, and English as a Second Language classrooms as well as assisting those students individually outside of class. The value of this effort can be demonstrated in three ways: (1) It would have cost the college more than \$60,000 if paying an entry level classroom aide for this much time; (2) The tutors' effort is equal to 15 classroom FTE hours; (3) It equals 32 weeks of a full-time, 40-hour work week. Volunteers, thank you for your valuable service! - Liz Coleman, ABSE Tutor Coordinator, ext. 2919

Business Department update

Following the departure of James Cagney, three instructors are serving as lead faculty: Jean Geiger, Office Administration, ext. 2159; Eilene LePelley, Business Education Center, ext. 2930; and Marilyn Rholl, Business Management, ext. 2538. Tom Wayne, Science Department chair, also is serving as interim chair for the Business Department. Discussions are being conducted to consider possibilities for consolidating business-related instruction. - Tom Wayne, ext. 2446

Special offer to staff

Hear John Workman and five other Lane faculty--all top-notch jazz musicians--in concert this Thursday, Nov. 19, at 8 p.m. in the Performing Arts Blue Door Theatre. There will be a 20 percent discount to all staff, making the tickets \$6 each. Call ext. 2202 from 12 noon-4 p.m. to reserve your tickets.

Leave proposals are now being accepted

Faculty professional development leave proposals are being accepted for spring term 1993. The deadline is Dec. 15. Contracted faculty members may qualify for one-to-three terms of paid professional development leave. Please check your contract (Article 23, page 16). Applications and guidelines are available from Roxanne Flowerday or Pat John, Study Skills, ext. 2439.

AAWCC annual conference

The annual conference of the American Association of Women in Community Colleges (formerly the American Association of Women in Community and Junior Colleges) will be held in Portland from Dec. 2-4 at the Marriott Hotel. Topics include legislative issues, gender issues and the media, personal styles and leadership, un-learning racism, surviving bureaucracy, and many others. Registration fee is \$95 until Nov. 20, or \$110 after Nov. 20. Contact Julie Baker, ext. 2199, for further information.

Thanks

- Thanks to all of you for the kind words of praise. Being installed as Honorary Lifer in the Hall of Fame for Oregon Association of Health, Physical Education, Recreation and Dance could never have been possible without the unselfish cooperation of many people, including LCC and Springfield School District #19. Thank you very much. - Debbie Daggett, ext. 2270
- From Wings: "Angels can fly because they take themselves lightly." To my director, Shannon Kracht, and especially to my office manager, Debra Lamb, a most sincere thank you for helping make it possible for me to attend Wings' Personal Effectiveness Seminar. Thank you also to Judy Ward for administrative support. For everyone wanting to make a difference in ourselves and to our planet it is an unforgettable, most positive and truly wonderful experience! - Lorna Funnell, ext. 2906

Many praised presentation by Dr. Rick Brinkman

"Wonderful! Perfect timing on our road to Continuous Quality Improvement." This comment is one of the many praising the presentation by Dr. Rick Brinkman of CareerTrack given at the Emerald Valley Inn on Oct. 29. Congratulations to the Classified Professional Development Team for planning this excellent staff development activity. Over 150 classified and management staff members learned new customer service techniques to help them in working with students and other staff alike. Watch The Daily for future professional development activities. - Julie Baker, ext. 2199

All staff holiday reception planned

Mark your calendars for Dec. 9, 3 p.m., for an all staff holiday reception in the Cafeteria. Watch The Daily for further details. - Julie Baker, ext. 2199

TTT can add TNT to teaching techniques

TTT--Teachers Talking About Teaching can put some TNT into your lesson plans and teaching techniques. Come to an LCC professional development activity Monday, Nov. 23, 3-4:30 p.m. in Center 401, to enjoy out-of-this world pastries from Fall Creek Bakery and espresso coffee from Allann Brothers, to meet people and renew friendships, and to get some new teaching ideas from Maxine Frauman and Sharon Sandgathe on experience-oriented learning techniques. - Sharon Thomas, ext. 2145

Lane Dance Theatre to perform at Newport arts center

Lane Dance Theatre, Lane's student dance company, and TwoDance, the dance company of Mary Seereiter from Lane and Sherrie Barr from the UO, will perform with the Pacific Coast Ballet at the Newport Performing Arts Center on Friday and Saturday, Nov. 20 and 21, at 8 p.m., and Sunday, Nov. 22, at 2 p.m. LDT will perform "Endangered", a primal and intense work choreographed by Seereiter in 1990. This work will be submitted in March to the American College Dance Festival for a choreographic competition. LDT would like to thank the officers of the Associated Students of Lane Community College for funding this event. - Mary Seereiter, ext. 2647

Reminder: tonight's speakers to discuss Siberia

Political Science instructor Joe Kremers and Luda Shamanskaya, English teacher at the Language Institute in Irkutsk, Siberia, will talk about Siberia in Jerome Garger's Peace and Conflict Studies class tonight, Nov. 17, from 7:15-8:30 p.m. in Center 449. Guests are welcome.

ADS

FOR SALE: DINING ROOM SET--Lovely, contemporary pecan and rattan. Includes table, two leaves, 6 chairs, lighted hutch, and serving buffet. \$1,750. Also selling coffee and end tables that match dining set. Larry Warford, CED, ext. 2302 or 687-1952.

WELL, I MADE THE SEMI-FINALISTS and will perform again (re: Comedy Challenge for the Jay Leno Show), Thurs., Dec. 3 at 8 p.m. sharp at Kowloons/Scandals on Centennial Blvd. between Acura and Autzen Stadium. Thanks to all who extended their support and/or came out to watch. - Lorna Funnell, Cont. Ed., ext. 2906.

BACK AGAIN - BEAUTIFUL XMAS SWAGS of fresh fir boughs, holly, lovely plaid ribbons, and red velvet ornaments (snow optional). only \$6.25 - Linda Myers, Co-op. Ed., ext. 2883 or 344-6483.

LOOKING FOR THAT UNIQUE YET SPECIAL GIFT for friends and loved ones this year? Give them something that they're sure not to have yet...their very own collector's edition calendar from the Harrisburg City Library. This year's calendar features photos of Harrisburg in years gone by. For \$5.50 each you can help the expansion fund of the Harrisburg Library. If this sounds like the perfect solution for your gift giving needs, call Nancy Oster-Courtney, Financial Services, ext. 2609.

Deadlines - Deadline for The Daily is 12-noon of the day prior to publication on Mondays, Tuesdays, Wednesdays, and Thursdays. Submissions must be made in writing and include first and last name, department, and extension number. This information is required to be printed with ads. Ads are free and limited to staff. Send to The Daily in intercampus mail or deliver to Admin. 210. All items will be published at least once and repeated only if space permits. New items receive priority. The Thursday issue features shared decision-making news.

The Daily

Edited by Joan Aschim

Published for the staff of Lane Community College

747-4501, ext. 2591

Wednesday, November 18, 1992

Eighth week of fall term

Today: Women's Center open house

Drop by the Women's Center in Center 213 today from 10 a.m. to 2 p.m. for hot cider, coffee and treats.

Facilities committee to meet

The Facilities Management Committee will meet Thursday, Nov. 19, at 3 p.m. in Campus Services 203. Topics on the agenda include: office wall in ASLCC, Downtown Center parking, LCC at Cottage Grove, Multi-Cultural Center relocation, and construction priorities. Interested staff and students are welcome.

Resource group to meet

The Resource Development Committee will meet Friday, Nov. 20, from 10-11 a.m. in Business 205. - Sarah LaMaster, ext. 2312

Counseling service alert

- Counseling will have limited service on Friday, Nov. 20, while full-time staff attend in-service. The Career Information Center will be open from 9 a.m. to 5 p.m. Testing will be closed.
- Counseling will close at 5 p.m. on Nov. 25, the day before the Thanksgiving holiday. Normal hours will resume Nov. 30: 9 a.m. to 7 p.m. Monday through Thursday, and 9 a.m. to 5 p.m. Friday.

Legislator to speak

Oregon Representative Sam Dominy, District 44, will speak on Friday, Nov. 20, from 9-10 a.m. in Center 402 to Steve Candee's State and Local Government class. His topic: the upcoming legislative session. Guests are welcome.

Diversity committee to meet

The Diversity Committee will meet Monday, Nov. 23, at 3 p.m. in Center 446.

Virginia Bailey awarded fellowship

Library evening circulation clerk and former Lane student Virginia Bailey is one of five people nationwide to win a full fellowship in library studies for people with disabilities awarded by the U.S. Department of Education. The \$10,000 fellowship will cover her tuition at Louisiana State University School of Library Science and other expenses.

Bailey started in the Library as a work-study student in 1986. She has worked the last three years as a regular part-time employee. She earned an associate of arts degree from Lane in 1989 and a bachelor's degree from the UO this summer. "We're extremely proud of her," said Cheryl Coleman on behalf of the Library staff. Bailey's last day will be Jan. 7.

TRIO grant completed

Faculty and staff from Mathematics, Counseling, Study Skills, Assessment and Testing, Student Support Services, Women's Program, Disabled Students Services, and Research, Planning & Evaluation contributed ideas, information, and many, many hours to the college's TRIO/Student Support Services Program grant proposal. It was mailed to the U.S. Department of Education on Nov. 10. The 123-page proposal was written by Grants Coordinator Sarah LaMaster. The proposed program will be called "Options" and will serve low-income, first-generation college students and students with disabilities. Roughly 70 percent of Lane's students would be eligible by these criteria.

Program planners identified mathematics as a major barrier to our students in pursuing four-year college degrees or completing professional/technical programs. The Options program will provide special services for 350 students each year, targeting those students who have low skills in mathematics and/or high math anxiety. Options program services, as planned in the proposal, will include basic mathematics courses with specially developed activities to build self-confidence in mathematics, study skills for mathematics, mathematics mentoring/tutoring and support groups, customized reading instruction, individual counseling and academic advising, and special courses to assist students in making the transition to four-year colleges, professional programs, or jobs.

The first year budget request is \$317,315. If funded, the initial grant cycle would be four or five years, with an opportunity for continued four- or five-year cycles after that. Many schools have had federally funded Student Support Services programs for 10-20 years. Lane will be notified if its proposal was successful by June 30, 1993. If successful, grant funding would begin September 1, 1993.

For further information, contact Sarah LaMaster, ext. 2312.

Annual pottery sale announced

Art Department students and staff will hold their annual holiday pottery sale on Tuesday and Wednesday, Dec. 1 and 2, from 9 a.m. to 3 p.m. in the Cafeteria.

Graphic design survey shows education helps get jobs

Education in graphic design is required by almost two-thirds of employers responding to a recent informal survey conducted by graphic design program coordinator Thomas Rubick. Over half required either a certificate of completion or an associate degree. Eleven percent said they required no experience. Of the remainder, the type of experience most often required was internship experience (36 percent). The skills employers sought were design, computer, communication and people skills. People skills was the only area that did not receive any "not very important" votes. For more information about the survey and the graphic design program at Lane, contact Rubick in the Art Department at ext. 2887.

Cold weather closures will be announced on area radio stations

If you get up some morning and think there's enough snow or ice to have closed the college, tune in your favorite radio station and listen for an announcement. Closures usually will be announced by 6 a.m. The decision to close the college begins at 5 a.m. in Security with information on campus conditions and weather and road conditions for Eugene, Cottage Grove and Florence. The president is advised and makes the decision on whether to close the college. Key administrators and operations personnel are then notified, including one who contacts the media.

Thursday workshop will stimulate creative energy

"Tapping Your Creative Energy" is the topic of a classified professional development workshop to be held Thursday, Nov. 19, at 3 p.m. in the Blue Door Theater. Theater instructor Judith "Sparky" Roberts will share fun techniques for facing challenging situations at work and home. Whether or not you attended the workshop on personal power, this one is a natural follow up. Wear casual clothing. - Julie Baker, ext. 2199

Conference on free trade announced

"Take Back Our Economy," a conference on free trade and the global economy, will be held Nov. 20-21 at the UO. Mari Clair Acosta, president of the Mexican Commission of the Defense and Promotion of Human Rights, will speak at 7:30 p.m. on Nov. 20 in Room 100 of Willamette Hall. Manuel Pastor, professor of economics at Occidental College, will be available at an informational session from 9 a.m. to 5 p.m. on Nov. 21 in the Fir Room of the Erb Memorial Union building. Conference fee is \$15 total, or \$5 for the keynote address only. Register by calling 686-5012.

Sparks will fly at welding program's open house

The welding program will hold an open house on Friday, Dec. 4, from 6-9 p.m., in the Apprenticeship Building welding lab. Featured will be robotic and plastic welding demonstrations, metallurgy displays, and program information. Refreshments will be provided. For more information contact welding instructor Ed Bromley at ext. 2500, or Cooperative Education coordinator for the industrial arts, Linda Myers, at ext. 2883.

Faculty professional leave applications due the end of the month

Faculty professional activities guidelines and application forms for short-term training are available from Roxanne Flowerday or Pat John in Study Skills at ext. 2439. They are due Nov. 30. Applications will be reviewed by a committee served by Doris Burkland, Study Skills, Penny Degelman, Math, Esther Eno, Business, Julianne Stermer, Family & Health Careers, and Lynne Swift, Training & Development. Upcoming deadlines are Jan. 4 and 29, Feb. 26, April 2 and 30, and May 28.

Student success conference scheduled

The Student Success Strategies conference will be held Feb. 24-26 in Portland. Lane will pay the registration fee for five staff. If you are interested or have questions, contact Evelyn Nagy in LEAP at ext. 2947 by Dec. 11.

Holiday mail procedure announced

Due to the Thanksgiving holiday, main campus staff are asked to bring their outgoing and intercampus mail to the Mailroom between 12-3:30 p.m. on Monday, Nov. 30, and to pick up their incoming mail, in lieu of regular Mailroom pick up and delivery services. The Downtown Center will receive usual service. Thank you! - Mailroom staff

ADS

FOR SALE: ENTERTAINMENT '93 BOOKS, \$30. Contact Bob Cudmore, Purchasing, ext. 2571. Money goes to buy boy's basketball uniforms.

MUG SALE: 25% off on selected mugs at the Bookstore.

FOR SALE: ENTERTAINMENT '93 BOOKS, \$30. Contact Paula Chan, KLCC, ext. 2486, or evenings 344-8858. Money goes to Big Brother/Big Sister programs.

Deadlines - Deadline for The Daily is 12-noon of the day prior to publication on Mondays, Tuesdays, Wednesdays, and Thursdays. Submissions must be made in writing and include first and last name, department, and extension number. This information is required to be printed with ads. Ads are free and limited to staff. Send to The Daily in intercampus mail or deliver to Admin. 210. All items will be published at least once and repeated only if space permits. New items receive priority. The Thursday issue features shared decision-making news.

The Daily

Edited by Joan Aschim

Published for the staff of Lane Community College

747-4501, ext. 2591

Thursday, November 19, 1992

Eighth week of fall term

Board, council and branch meetings

- Board of Education work session, Monday, Nov. 23, 5:30-9:30 p.m., Board Room
- Administrative Services managers, Tuesday, Nov. 24, 8:30-10 a.m., PE 205
- College Council, Tuesday, Dec. 1, 1:30-3 p.m., Board Room
- Student Services directors, Wednesday, Dec. 2, 9-10:30 a.m., Admin. 206
- Instructional Cabinet, Wednesday, Dec. 2, 1:30-3 p.m., Board Room
- Legislative Action Team, Thursday, Dec. 3, 7:30-9 a.m., Board Room
- Community & Economic Development Cabinet, Monday, Dec. 7, 1:30-3:30 p.m., Board Room
- Classified Council, Wednesday, Dec. 9, 3-5 p.m., PE 205
- Board of Education, Wednesday, Dec. 9, 7:30 p.m., Board Room
- Faculty Council, Thursday, Dec. 10, 3-4:30 p.m., Board Room
- Manager's Forum, Friday, Dec. 11, 8:30-10 a.m., Board Room

Board of Education and College Council to meet for work session

The Board of Education and College Council will meet for a work session on Monday, Nov. 23, from 5:30-9:30 p.m. in the Board Room to discuss shared decision making. Topics will include the reasons for its use, its principles, its status within the college, and the roles of the board, College Council, the president and the vice presidents.

College Council approves task force to shape Lane's faculty of the future

President Moskus' proposal for a **task force on Lane's faculty of the future** met with approval at the Nov. 17 College Council meeting. The proposal came out of a request from Faculty Council to review trends in the ratio of full-time to part-time faculty at the college. Moskus responded that the ratio is one of several faculty issues that need attention so he proposed a more comprehensive task force. The task force will be charged to develop a vision of our ideal faculty for the year 2000; to develop goals, and if necessary, policies, to implement that vision; and to recommend objectives for the next several years that support the goals and vision. It would have a deadline of April 16. Membership should be faculty and other employee groups plus students. Moskus said using focus groups for student participation may be more successful than requiring regular meeting attendance. The president asked council to bring back nominations for task force membership and leadership by the next meeting.

The **business of College Council** was debated. The distinction between policy and procedure is often unclear and items of both nature have been heard at council. A newer member of the council, Maxine Frauman, said the group hasn't discussed as many visionary issues as she'd expected. Moskus said he had similar feelings. The discussion will continue.

Council reviewed a list of interdepartmental charges, or **chargebacks**. Council is examining the chargeback system to determine whether it should be changed. Chargebacks help supplement insufficient budgets and build up ICP accounts. They also discourage indiscriminate use of a service. Some are figured at cost but many others include mark-ups. Council asked for more information about the mark ups and will continue the discussion. Chargeback information was prepared by Ted Kotsakis, Lloyd Rain and David Schiappa.

The **safety policy** was adopted with a revision to refer to employees in general rather than list out separate employee groups, and to include students. The policy states the responsibility of the institution and individuals. Council member Tom Wayne also serves as chair of the Safety Committee.

In other business, council declared that next year's **Christmas holidays** should be Dec. 24, 27 and 28, 1993; welcomed new student representative **Nickie King**; and postponed other items on the agenda due to lack of time. The **next meeting** is Dec. 1. A **work session** with the Board of Education on shared decision making has been set for Monday, Nov. 23, from 5:30-9:30 p.m. in the Board Room.

Two options available to those with computer conversion questions

The Computer Users Group, an informal membership of staff responsible for the mainframe conversion, meets every Monday from 9:30-11 a.m. in the Board Room. The group has been meeting since Feb. 24. All interested staff are welcome and encouraged to attend. If you are unable to attend, you may contact any regular member of the group to express your interest or convey your concerns. (Due to lack of a meeting room, the Nov. 23 meeting is canceled.) In regular attendance are:

Administrative Services: Carol Beckley, ext. 2363;

Admissions: Sharon K. Moore, ext. 2686;

Computer Services: Nick Cheshire, ext. 2804, Jim Keizur, ext. 2866, Jerry Nehring, ext. 2864;

Continuing Education: Debra Lamb, ext. 2915;

Counseling: Vicki Doughty, ext. 2296, Rick Freund, ext. 2435;

Financial Aid: Linda DeWitt, ext. 2205;

Financial Services: Kay Malmberg, ext. 2594, Verne Whittaker, ext. 2614;

Purchasing: Lloyd Rain, ext. 2572;

Research, Planning & Evaluation: Craig Taylor, ext. 2364.

Student Records: Jolene Bowers, ext. 2693.

- submitted by Linda DeWitt for the Computer Users Group

Basketball passes and proxies available

Attached to today's Daily is an order form for season passes to men's and women's basketball at a special discount for Lane employees. If you're unable to attend the games but would like to support the Titans, a season silhouette can be purchased to take your place. Your silhouette will be set up at each home game with your name, photo, clothes, or whatever you like on the silhouette. For more information, contact Susan K. Deskines in Athletics at ext. 2570.

Correction for insurance meeting time

Representatives from Blue Cross/Blue Shield and Managed Care Network will be available to answer questions from faculty, part-time faculty, classified and management staff on Monday, Nov. 23, and Wednesday, Dec. 2, from 1-4 p.m. in PE 205.

New insurance premium rate charts available

New insurance premium rate charts effective Jan. 1, 1992, for classified, faculty and management staff are available in the forms rack just inside the door of Personnel Services.

KLCC has payroll deduction forms available

Payroll deduction forms for contributions to KLCC are available at the station or by calling ext. 2224. There are many premiums to choose from. A \$60 contribution is worth a CD, tape, mug, or t-shirt.

Orientation for part-time credit instructors announced

Personnel Services will host an orientation for part-time credit instructors on Tuesday, Nov. 24, from 2:30-4 p.m. in Forum 308. The session will cover working conditions, benefits, compensation, and a question-answer period. - Judy Ward, ext. 2583

Teleconference will address technical and academic education

A teleconference, "Achieving Integration Through Curriculum Development," will be held Tuesday, Nov. 24, from 10:30 a.m.-12 noon, in Center 10. The focus will be on integration of academic and technical education through applied instruction, a trend in education today. It's free. To pre-register, call Judith Gabriel at ext. 2699.

ADS

CAPTAIN'S BED and mattress for sale, great for firm sleep or back problems. We need more room in our guest room and this great bed, used only 14 nights, can be yours. It's queen-sized and the storage is great. \$150 takes it all. Jane Scheidecker, BDC, ext. 2929; or 345-2420.

HOME NEEDED FOR LOVABLE MALE TABBY CAT. He is 7 months old, has all shots, and is neutered. He has beautiful markings and loves to be held and petted. Unfortunately, he does not want to share his home with my small female cat. Charleen Maclean, Transitions to Success, ext. 2840.

TWO HAND-TAMED PARAKEETS with deluxe cage. Birds are free but cage is for sale. Make me an offer before the cat gets them. Fay McClain, AHS, ext. 2858.

YACHATS YURT. Wonderful get-away for two. Completely furnished with full kitchen and bath on first street in beautiful downtown Yachats. \$45 for one night or \$80 for the weekend. Marje Takei, Counseling, ext. 2204, or 485-4768.

WANTED: BLACK BUTTE cabin or home for winter holidays to sleep family of six. Prefer the week between Christmas and New Year's if possible. Julianne Stermer, F&HC, ext. 2527 or 726-4942.

FOR SALE: SET OF SIX ANTIQUE Eastlake dining chairs with cane seats, \$1,100. Silverware set for 12 with serving pieces, Rodgers' Her Majesty pattern, 1931, \$675. Antique sewing rocker, \$250. Tiffany-style hanging lamp, \$175. Two 1952 Vogue Ginny dolls with original closet and clothes, make offer. Contact Susan Burch, H&PE, ext. 2556, or 343-9428.

FOR SALE: ENTERTAINMENT '93 BOOKS, \$30. Bob Cudmore, Purchasing, ext. 2571. Money goes to buy boy's basketball uniforms.

FOR SALE: ENTERTAINMENT '93 BOOKS, \$30. Paula Chan, KLCC, ext. 2486, or evenings 344-8858. Money goes to Big Brother/Big Sister programs.

DINING ROOM SET: Lovely, contemporary pecan and rattan with table, two leaves, 6 chairs, lighted hutch, and serving buffet, \$1,750. Also selling coffee and end tables that match dining set. Larry Warford, CED, ext. 2302, or 687-1952.

BACK AGAIN - BEAUTIFUL XMAS SWAGS of fresh fir boughs, holly, lovely plaid ribbons, and red velvet ornaments (snow optional). only \$6.25 - Linda Myers, Co-op. Ed., ext. 2883 or 344-6483.

LOOKING FOR THAT UNIQUE YET SPECIAL GIFT for friends and loved ones? Give them something that they're sure not to have yet...their very own collector's edition calendar from the Harrisburg City Library. This year's calendar features photos of Harrisburg in years gone by. For \$5.50 each you can help the expansion fund of the Harrisburg Library. If this sounds like the perfect gift solution, call Nancy Oster-Courtney, Financial Services, ext. 2609.

Deadlines - Deadline for The Daily is 12-noon of the day prior to publication on Mondays, Tuesdays, Wednesdays, and Thursdays. Submissions must be made in writing and include first and last name, department, and extension number. This information is required to be printed with ads. Ads are free and limited to staff. Send to The Daily in intercampus mail or deliver to Admin. 210. All items will be published at least once and repeated only if space permits. New items receive priority. The Thursday issue features shared decision-making news.

The Daily

Edited by Joan Aschim

Published for the staff of Lane Community College

747-4501, ext. 2591

Monday, November 23, 1992

Ninth week of fall term

This week:

- Blue Cross/Blue Shield and Managed Care Network reps available to answer questions today, Nov. 23, 1-4 p.m., PE 205; and Dec. 2, same time and place.
- Board of Education work session, today, Nov. 23, 5:30-9:30 p.m., Board Room
- Administrative Services managers, Tuesday, Nov. 24, 8:30-10 a.m., PE 205
- Teleconference, "Achieving Integration Through Curriculum Development," Tuesday, Nov. 24, 10:30 a.m.-12 noon, Center 10
- Orientation for part-time credit instructors, Tuesday, Nov. 24, 2:30-4 p.m., Forum 308
- Thanksgiving Holiday, Nov. 26-27

Meeting canceled

The curriculum approval meeting for Dec. 2 has been canceled. At this time, no new curriculum proposals or changes have been submitted.

Speakers

- **Jack Roberts**, Lane County commissioner, will speak to Steve Candee's State and Local Government class on Monday, Nov. 23, from 9-9:50 a.m. in Center 402. Guests are welcome.
- **William H. Boyer**, professor emeritus of the University of Hawaii and author of Education for Annihilation and America's Future, will speak on Tuesday, Nov. 24, from 7:15-8:30 p.m. in Center 449 to Jerome Garger's Peace and Conflict Studies class. His topic: "World Order Theory: Focus on the Oregon Plan." Guests are welcome.

TTT can add TNT to teaching techniques

TTT--Teachers Talking About Teaching can put some TNT into your lesson plans and teaching techniques. Come to an LCC professional development activity **today**, Nov. 23, 3-4:30 p.m. in Center 401, to enjoy out-of-this world pastries from Fall Creek Bakery and espresso coffee from Allann Brothers, to meet people and renew friendships, and to get some new teaching ideas from Maxine Frauman and Sharon Sandgathe on experience-oriented learning techniques. - Sharon Thomas, ext. 2145

Fall in-service evaluations requested by Thanksgiving

Evaluations for fall in-service are in the mail. We hope you will return your survey before Thanksgiving so your input can be included in future planning. Much to our chagrin, Sparky Roberts' session on humor and interactive communication in the classroom was omitted from the evaluation form. She would like feedback from those who attended. If you would like to help evaluate this session, please send your comments to Julie Baker, CED, or call ext. 2199.

Presentations sought for Martin Luther King Day in-service

Martin Luther King Day is Jan. 18 and will be devoted to staff development. Planners for the event have decided to have a guest presenter in the morning followed by mini-sessions on various topics of interest. Requests for proposals for presentations have been distributed to classified, faculty and management professional development teams and to the diversity and international education committees. Deadline for submissions is Dec. 11. Successful proposals will be selected during finals week. If you would like to submit a proposal for a one-to-two hour presentation, need a proposal form, or if you have questions or suggestions for MLK Day, contact Julie Baker, CED, ext. 2199.

New insurance premium rate charts available

New insurance premium rate charts effective Jan. 1, 1993, for classified, faculty and management staff are available in the forms rack just inside the door of Personnel Services.

Native American issues topic of seminar

The Issues in Cultural Diversity seminar series continues Nov. 24 with "Native American Issues." The seminar will be held from 3-4:30 p.m. and 5:30-7 p.m. in Apr. 223. Staff may audit or register for credit through Social Science. For more information contact Vicki Levine at ext. 2074.

Exit interviews scheduled

Federal regulations require that students receiving a Stafford Student Loan or SLS Loan while attending Lane must attend an exit interview during their last term of attendance. The exit interview outlines financial planning, disclosure statements, repayment procedures, how to correspond with the lender, secondary markets, loan consolidation, options for making payments, and the consequences of default. Sessions will begin on time and latecomers will not be admitted. Sessions last about 50 minutes. The interviews will be held in Forum 308 on Tuesday, Dec. 1, at 10 a.m., 2 p.m. and 6 p.m.; and on Wednesday, Dec. 2, at 9 a.m., 1 p.m. and 4 p.m.

Thanks

A big thanks to Thad Cowdin for shutting off the fire alarm when a certain administrator's birthday cake candles excited the sensitive smoke detectors at the Downtown Center. - Jane Scheidecker

Printing/Graphics needs your work orders

Printing/Graphics needs work orders for books, modules, and packets for sale in the Bookstore by Dec. 2; and submit work orders for materials due the first day of winter term by Dec. 9.

Women's scholarships available

Applications for Soroptomist International of Eugene scholarships are now available in the Women's Center. Applicants must be female heads of household and able to demonstrate financial need. The local cash award is \$500. Applications are due Dec. 15. - Patsy Raney, ext. 2352

Student success conference registration forms available

Registration forms for Student Success Strategies VIII conference to be held in Portland Feb. 24-26 are available from Joyce Kofford, Student Services, ext. 2315.

ADS

HAPPY BIRTHDAY to Mary Michaud! Stop by the Life Experience Assessment Program at the Downtown Center, Room 156, or call ext. 2939, Monday or Tuesday (11/23 or 24; Nov. 25's the big day but she won't be in). Happy birthday, "turkey lips," from your co-workers!

FOR SALE: 21-SPEED RALEIGH cross bike for mountain trails or street riding. 19" Shimano components, Brooks seat, fenders, toe clips, rack. Almost new! Asking \$300. 344-7411. Marissa Linn, ESL, ext. 2253.

FOR SALE: DREAM JEEP. Black 1989 Jeep Cherokee Laredo. Heavy duty everything. Sun roof, anti-lock brakes. Cherry condition. 69,000 freeway miles. \$13,500. Sandy Brown, E,FL&S, ext. 2118. Call me or Bill at home at 342-1175.

JUST IN TIME FOR THE COLD: For sale, beautiful new tan mohair coat, raglan sleeves, size 14. Was \$160, asking \$100. It's in my office, Center 441, for you to try on. Ingrid Gram, Social Science, exts. 2427 or 2486.

FOR SALE: 1990 HONDA CIVIC SI HATCHBACK. 38,000 miles. Red, moon roof, cassette deck. One owner, all records. High blue book \$9,250. A steal at \$8,300. This is a great little car! Tricia Hahn, ext. 2395, Soc. Sci., home 342-2570.

FREE TO GOOD HOME, 1 yr. old (?) male cat. Black with white whiskers and feet. He wandered onto my front porch and I can't keep him. Will deliver. Contact Ann Augard, Computer Services, ext. 2865 or 687-8393.

ORDER DEADLINE EXTENDED FOR FLORIDA CITRUS FRUIT SALE: Enjoy delicious navel oranges and red grapefruit while you support the Oregon Children's Choir. Orders will be taken through DEC. 1 and delivered Dec. 5. Prices: Navel oranges, 20 lbs. for \$13 or 40 lbs. for \$23.50; red grapefruit, 20 lbs. for \$12 or 40 lbs. for \$21.25. Colleen Cairney, ITD, ext. 2843.

BACK AGAIN - BEAUTIFUL XMAS SWAGS of fresh fir boughs, holly, lovely plaid ribbons, and red velvet ornaments (snow optional). Only \$6.25 - Linda Myers, Co-op. Ed., ext. 2883 or 344-6483.

LADIES LEATHER JACKET, worn two times, \$85; downhill skis, Dynastar & Solomon bindings, \$85; ski goggles, \$10; gloves, \$10; two sets of ski boots, \$45 each. All items excellent condition. Contact Patti Bonitz, SCP, 683-8043.

CAPTAIN'S BED and mattress for sale, great for firm sleep or back problems. We need more room in our guest room and this great bed, used only 14 nights, can be yours. It's queen-sized and the storage is great. \$150 takes it all. Jane Scheidecker, BDC, ext. 2929; or 345-2420.

HOME NEEDED FOR LOVABLE MALE TABBY CAT. He is 7 months old, has all shots, and is neutered. He has beautiful markings and loves to be held and petted. Unfortunately, he does not want to share his home with my small female cat. Charleen Maclean, Transitions to Success, ext. 2840.

Deadlines - Deadline for The Daily is 12-noon of the day prior to publication on Mondays, Tuesdays, Wednesdays, and Thursdays. Submissions must be made in writing and include first and last name, department, and extension number. Send to The Daily in intercampus mail or deliver to Admin. 210. All items will be published at least once.

MAIN CAMPUS CAFETERIA

	MONDAY	TUESDAYS	WEDNESDAY	THURSDAY	FRIDAY
SNACK BAR	SCALLOP CHICKEN	HAMBURGER SQUASH CASSEROLE	SPAGHETTI HAM & BROCCOLI CASSEROLE	MUT & RICE LOAF	COOK'S CHOICE
SOUP	CORN BEEF	COOK'S CHOICE	CREAM TURKEY	SWISS CAULIFLOWER	SHRIMP & MUSHROOM
	ITALIAN VEGGIE	CHILI	STEAK BEEF BARLEY	QUICK MINESTRONE	COOK'S CHOICE
MAIN ENTREE	CHILI		CHILI	CHILI	CHILI
	CHICKEN ABODE	ROAST BEEF	SCALLOPED CHICKEN	ALMOND TURKEY CUTLETS & RICE PILAF	BAKED COD
	HAMBURGER/SQUASH CASSEROLE	SPAGHETTI HAM & BROCCOLI CASSEROLE	CRAB & CHEESE CASSEROLE	BEEF POT PIE	CORN BEEF & CABBAGE
VEGGIE	PIZZA	PATTY MELT	SLOPPY JOE	RUEBEN	TURKEY SWISS SANDWICH
	STUFFED PEPPERS	QUICHE GREEN CHILE PIE	MUT/RICE LOAF	STIR FRY	COTTAGE CHEESE BALL WITH MUSHROOM SAUCE
MINI	ALMOND SHRIMP	CHICKEN RICE CASSEROLE	BEEF SPAGHETTI	SCALLOP POTATOES & HAM	BEEF ENCHILADA
VEGETABLE	PEAS	MEXICAN CORN	SPINACH	ASPARAGUS	BRUSSELS SPROUTS
	CAULIFLOWER	BROCCOLI	YELLOW SQUASH	CARROTS OBRIAN	BEAN MEDLEY

The Daily

Edited by Joan Aschim

Published for the staff of Lane Community College

747-4501, ext. 2591

Tuesday, November 24, 1992

Ninth week of fall term

Holiday mail procedure announced

Due to the Thanksgiving holiday, main campus staff are asked to bring their outgoing and intercampus mail to the Mailroom between 12-3:30 p.m. on Monday, Nov. 30, and to pick up their incoming mail, in lieu of regular Mailroom pick up and delivery services. The Downtown Center will receive usual service. Thank you! - Mailroom staff

Reminder: speaker tonight

Professor and author William H. Boyer will speak tonight, Nov. 24, from 7:15-8:30 p.m. in Center 449 to Jerome Garger's Peace and Conflict Studies class. His topic: "World Order Theory: Focus on the Oregon Plan." Guests are welcome.

Clinton plans educational reforms

President-elect Bill Clinton plans to enact on a national level many of the educational reforms he supported in Arkansas, according to Aid for Education Report, a newsletter received by the grants office. Among these were increased school accountability, school-based decision making, and dropout prevention programs like the Youth Apprenticeship Program and Youth Opportunity Corps. Clinton Supports creation of a national exam system to measure the progress of students and schools. His agenda for K-12 includes full funding for Head Start, drug prevention and treatment programs, a Safe Schools initiative, increased funding for special education services, and incentives to attract and retain good teachers.

In higher education, Clinton wants to maintain the Pell Grant program but scrap the existing student loan system and establish a National Service Trust Fund which would guarantee the means to obtain a college education. He wants to attack adult illiteracy by ensuring that each state has a plan to teach every worker to read and to help them earn a GED. He advocates worker retraining programs that would require employers to spend 1.5 percent of payroll for continuing education and training for all workers. Throughout his campaign, Clinton stressed the importance of job training and retraining.

A copy of the newsletter's report will be available in the Grants library outside Admin. 209 after Dec. 14. For more information, contact Sarah LaMaster at ext. 2312.

Computer conversion best ever, says 25-year consultant

The maker of Lane's new mainframe administrative software recently wrote to say he's "never seen it done any better in such a short period of time" as at Lane in his 25 years working with higher education. Robert W. Baumbach, CEO of Computing Options Company, wrote:

"While the elapsed time may seem long to the user, this was a very rapid implementation for so many modules. ... To have essentially full implementation in only 9 months at a college the size of LCC is a major accomplishment. We know of many colleges that have worked for years on similar conversions and spent millions on the software alone and have not achieved the results you have.

"The primary credit for this is the staff at Lane.... We have never received more cooperative and competent support than that provided by Jim Keizur's computer center staff, especially Nick Cheshire. When problems arose, the attitude was always to find a solution and keep moving. Obviously, there were key user staff members that assumed key leadership roles.

"Such conversions are never an enjoyable experience...and rattle everyone's cage. In the midst of such turmoil, it is difficult to realize that you have made a major achievement."

Management development applications due

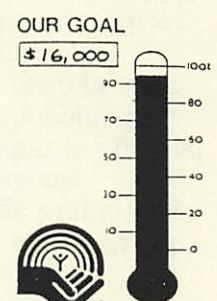
The Management Personal and Professional Development Committee will meet Thursday, Dec. 17, to review applications for both personal and professional development. Please submit applications by the previous Friday, Dec. 12. This is the last opportunity for winter term tuition funding. Henceforth, the committee will be unable to review late and incomplete applications. For forms and guidelines, call Lloyd Rain at ext. 2208.

Job search workshops offered

The Job Placement Office will hold a resume and job search workshop on Dec. 9 from 4-6 p.m. in Forum 310. An interviewing workshop will be held Dec. 2. For more information or to register, contact Diane Morrow at ext. 2164.

United Way campaign concludes

The college United Way campaign concludes with donations totaling \$14,989, or 94 percent of our \$16,000 goal. The money will be well used to help meet a variety of needs within Lane County. My deepest thanks to all who contributed. Special thanks to our group coordinators, Diane Engle of Counseling for classified staff and Annick Todd of English as a Second Language for faculty.
- Lloyd Rain





Lorna Funnell of Continuing Education (pictured) and Bjo Ashwill, former Lane employee, each won a round of the Comedy Challenge at Scandal's lounge, Kowloon restaurant, in Eugene on Nov. 12. They will compete again on Thursday, Dec. 3., at 8 p.m. The ultimate winner will compete nationally for a chance to appear on "The Tonight Show With Jay Leno" in February. (Photo by Arthur Mason.)

Classified staff shopping trip open to all

The Lane Community College Employees Federation and the Classified Professional Development Team are chartering a bus to Portland on Saturday, Dec. 12, for a holiday shopping trip. The bus will leave the main campus main parking lot at 9 a.m. and head for Pioneer Courthouse Square. The square is close to Nordstroms, Meier & Frank and the Galleria. It's also served by MAX, the electric rail system, which goes to Saturday Market, Lloyd Center and the Oregon Museum of Science and Industry. The bus will depart Pioneer Courthouse Square for Washington Square at 3:30 p.m. for more shopping. At 6 p.m., it will leave for home, detouring past the Christmas lights of Keizer north of Salem along the way.

All college employees and their families and friends are welcome. Cost is \$7 for LCCEF members and \$11 for all others. Payment may be made through the cashiers in Financial Services. Please use account number 101-541-8017-000000-4610. Receipts must be turned in to Julie Baker in Community and Economic Development, ext. 2199,

to reserve a seat. The deadline for reservations is Friday, Dec. 4. Reservations are non-refundable but seats may be transferred to someone else. Make reservations early and come aboard the Portland Shopping Express.

High school counselor list available

A current list of college district high school counselors and career coordinators/instructors is available to interested staff from Shan Titus, High School Relations, ext. 2688. She also has copies of the new community college viewbook.

Staff directory changes

- Change Clarice Bates' extension to 2182 on page 20 under Family & Health Careers and on page 49.
- Change Dave Andrews' extension to 2529 on page 20 under Family & Health Careers and on page 49.
- Add Patty Krebs, Information Specialist, 117 DTC, ext. 2940, to Counseling on page 15, and on page 55.
- Change Christine Russell's extension to 2288 on page 28 under Instructional Computing and on page 58.
- Add Cindy Hutton, ext. 2823, Advanced Technology Lab Coordinator, 122B PE, under Computer Information Technology on page 11, and on page 54.

Thanks

Thanks to the many people who worked hard to get out the winter term class schedule. Several miracles were required to bring the scheduled through unanticipated trials and anticipated conversions. Special thanks to Wendy Larson and Nick Cheshire of Computer Services; Melanie Brown-Carey and Ann Whipple of Curriculum & Scheduling; Trish Hamer and Shirley Nagy of Printing/Graphics; Terria Burch, proofreader extraordinaire; and all the department staff who contributed to the schedule for being flexible and creative and making it work. Class schedules will arrive in the mail by Dec. 1. - Susan Sutton, class schedule editor

Call for proposals

A call for proposals for the sixth annual National Conference on Race and Ethnicity in American Higher Education has been issued. The conference will be held June 3-8, 1993, in New Orleans. Presentations should address how to achieve comprehensive institutional change to improve racial and ethnic relations on campus; and how to expand opportunities for educational access and success by culturally diverse, traditionally underrepresented populations. Proposals are due Feb. 1. For more information, contact Julie Baker at ext. 2199.

ADS

RENTAL NEEDED: Jim Wychules, new Foodservices manager, wants to rent a small apartment or room with bath while relocating, beginning about mid-Dec. Non-smoker. Call 916-225-4733 work or 916-223-3435 home. Sandy Ing, Student Support Services, ext. 2665.

FOR SALE: 21-SPEED RALEIGH cross bike for mountain trails or street riding. 19" Shimano components, Brooks seat, fenders, toe clips, rack. Almost new! Asking \$300. 344-7411. Marissa Linn, ESL, ext. 2253.

FOR SALE: DREAM JEEP. Black 1989 Jeep Cherokee Laredo. Heavy duty everything. Sun roof, anti-lock brakes. Cherry condition. 69,000 freeway miles. \$13,500. Sandy Brown, E,FL&S, ext. 2118. Call me or Bill at home at 342-1175.

JUST IN TIME FOR THE COLD: For sale, beautiful new tan mohair coat, raglan sleeves, size 14. Was \$160, asking \$100. It's in my office, Center 441, for you to try on. Ingrid Gram, Social Science, exts. 2427 or 2486.

Deadlines - Deadline for The Daily is 12-noon of the day prior to publication on Mondays, Tuesdays, Wednesdays, and Thursdays. Submissions must be made in writing and include first and last name, department, and extension number. Send to The Daily in intercampus mail or deliver to Admin. 210. All items will be published at least once.

The Daily

Edited by Joan Aschim

Published for the staff of Lane Community College

747-4501, ext. 2591

Wednesday, November 25, 1992

Ninth week of fall term

Lane will help employees with "the human side" of change

Several concerned staff have volunteered to serve on a task force to help employees cope with changes occurring at the college this year. President Jerry Moskus charged the Transition Task Force with recommending a plan to College Council. Vice President for Student Services Linda Fossen chairs the group.

The task force met Nov. 23 and came up with a list of ideas to present to College Council on Dec. 1. Many ideas were considered including all-staff meetings, workshops featuring organizational transition consultant William Bridge's ideas, extension of health benefits in case anyone gets laid off, and more.

The group welcomes comments from anyone else who has suggestions. Serving on the task force are Linda Fossen, chair, Joan Aschim, Julie Aspinwall-Lamberts, Julie Baker, Bob Cudmore, Diane Dann, Carmel DeCroos, Greg Fishwick, Joyce Kofford, Marie Matsen, and Lynne Swift. For more information, contact Fossen at ext. 2315.

Sheriff's scholarships available

The Oregon State Sheriffs Association has two \$500 scholarships available for 1992-93. Any criminal justice major with 36 completed credits may apply. Contact John del Nero, Social Science, at ext. 2427, for details.

Legislative intern orientation to be held

State Senator Grattan Kerans will lead an orientation for all students wishing to intern with the Oregon Legislature in Salem starting in January. The orientation will be held Monday, Nov. 30, from 3-4 p.m. in Center 402. For more information, contact Steve Candee at ext. 2188.

Mayor to speak

Springfield Mayor Bill Morrisette will speak to Steve Candee's State and Local Government class on Friday, Dec. 4, from 9-10 a.m. in Center 402. Guests are welcome.

All staff holiday reception planned

Mark your calendars for Dec. 9, 3 p.m., for an all staff holiday reception in the Cafeteria. Watch The Daily for further details. - Julie Baker, ext. 2199

Staff invited to holiday salad potluck

Come enjoy holiday cheer at the Lane chapter of the American Association of Women in Community Colleges' salad potluck on Dec. 18 in the Board Room. AAWCC members, guests and friends are invited. Bring a salad and serving utensil. Table service and beverages will be provided. Come and go as you wish from 11:30 a.m. to 1 p.m. Please RSVP to Velma Jesser, ext. 2018, so we can plan accordingly.

Global T-shirts and bags for sale

International students will have three styles of T-shirts and two styles of canvas bags for sale in the Cafeteria on Wednesday, Dec. 2, at 10 a.m. Price range is from \$12 to \$14 per item. These make great Christmas gifts. Come early for best selections. - Pat Williams, ext. 2165

New employees oriented to college

A new employee orientation was held Oct. 14. Those in attendance are pictured below.

From left to right: Ahmad Rajabzadeh, Science; Carrie Raisanen, Science; Dennis Gilbert, Science; Nancy Bell, Financial Aid; Peg Allison, Business Development Center; Greg Fishwick, Counseling; Dale Green, Mathematics; Brody Tyler, Electronics; Sharon Edwards, Business Development Center; Ted Smouse, Campus Services; Edna Grass, Job Placement Office; Bee McRae, Admissions; Mark Harris, Substance Abuse Prevention; and Petermichael Vincent, Specialized Student Services.



Exit interviews scheduled

Federal regulations require that students receiving a Stafford Student Loan or SLS Loan while attending Lane must attend an exit interview during their last term of attendance. The exit interview outlines financial planning, disclosure statements, repayment procedures, how to correspond with the lender, secondary markets, loan consolidation, options for making payments, and the consequences of default. Sessions will begin on time and latecomers will not be admitted. Sessions last about 50 minutes. The interviews will be held in Forum 308 on Tuesday, Dec. 1, at 10 a.m., 2 p.m. and 6 p.m.; and on Wednesday, Dec. 2, at 9 a.m., 1 p.m. and 4 p.m.

Faculty professional leave applications due

Faculty professional activities guidelines and application forms for short-term training are available from Roxanne Flowerday or Pat John in Study Skills at ext. 2439. They are due Nov. 30. Applications will be reviewed by a committee served by Doris Burkland, Study Skills, Penny Degelman, Math, Esther Eno, Business, Julianne Stermer, Family & Health Careers, and Lynne Swift, Training & Development. Upcoming deadlines are Jan. 4 and 29, Feb. 26, April 2 and 30, and May 28.

ADS

SANDER, new, in box, Makita dual action, \$50 OBO. BICYCLE: Schwinn 26" 10-speed, recent tune-up, \$35 OBO. CARPET: new, approx. 12'x12', plush green, \$115 OBO. Dan Fite, ABE, ext. 2917, or 345-2400.

RENTAL NEEDED: Jim Wychules, new Foodservices manager, wants to rent a small apartment or room with bath while relocating, beginning about mid-Dec. Non-smoker. Call 916-225-4733 (work) or 916-223-3435 (home). Sandy Ing, Student Support Services, ext. 2665.

FOR SALE: 21-SPEED RALEIGH cross bike for mountain trails or street riding. 19" Shimano components, Brooks seat, fenders, toe clips, rack. Almost new! Asking \$300. 344-7411. Marissa Linn, ESL, ext. 2253.

FOR SALE: DREAM JEEP. Black 1989 Jeep Cherokee Laredo. Heavy duty everything. Sun roof, anti-lock brakes. Cherry condition. 69,000 freeway miles. \$13,500. Sandy Brown, E,FL&S, ext. 2118. Call me or Bill at home at 342-1175.

JUST IN TIME FOR THE COLD: For sale, beautiful new tan mohair coat, raglan sleeves, size 14. Was \$160, asking \$100. It's in my office, Center 441, for you to try on. Ingrid Gram, Social Science, exts. 2427 or 2486.

FOR SALE: 1990 HONDA CIVIC SI HATCHBACK. 38,000 miles. Red, moon roof, cassette deck. One owner, all records. High blue book \$9,250. A steal at \$8,300. This is a great little car! Tricia Hahn, ext. 2395, Soc. Sci., home 342-2570.

CITRUS FRUIT SALE: Enjoy delicious navel oranges and red grapefruit while you support the Oregon Children's Choir. Orders will be taken through DEC. 1 and delivered Dec. 5. Prices: Navel oranges, 20 lbs. for \$13 or 40 lbs. for \$23.50; red grapefruit, 20 lbs. for \$12 or 40 lbs. for \$21.25. Colleen Cairney, ITD, ext. 2843.

BACK AGAIN - BEAUTIFUL XMAS SWAGS of fresh fir boughs, holly, lovely plaid ribbons, and red velvet ornaments (snow optional). Only \$6.25 - Linda Myers, Co-op. Ed., ext. 2883 or 344-6483.

LADIES LEATHER JACKET, worn two times, \$85; downhill skis, Dynastar & Solomon bindings, \$85; ski goggles, \$10; gloves, \$10; two sets of ski boots, \$45 each. All items excellent condition. Contact Patti Bonitz, SCP, 683-8043.

CAPTAIN'S BED and mattress for sale, great for firm sleep or back problems. Used only 14 nights. It's queen-sized and the storage is great. \$150 takes it all. Jane Scheidecker, BDC, ext. 2929; or 345-2420.

HOME NEEDED FOR LOVABLE MALE TABBY CAT. He is 7 months old, has all shots, and is neutered. He has beautiful markings and loves to be held and petted. Unfortunately, he does not want to share his home with my small female cat. Charleen Maclean, Transitions to Success, ext. 2840.

YACHATS YURT. Wonderful get-away for two. Completely furnished with full kitchen and bath on first street in beautiful downtown Yachats. \$45 for one night or \$80 for the weekend. Marje Takei, Counseling, ext. 2204, or 485-4768.

WANTED: BLACK BUTTE cabin or home for winter holidays to sleep family of six. Prefer the week between Christmas and New Year's if possible. Julianne Stermer, F&HC, ext. 2527 or 726-4942.

FOR SALE: SET OF SIX ANTIQUE Eastlake dining chairs with cane seats, \$1,100. Silverware set for 12 with serving pieces, Rodgers' Her Majesty pattern, 1931, \$675. Antique sewing rocker, \$250. Tiffany-style hanging lamp, \$175. Two 1952 Vogue Ginny dolls with original closet and clothes, make offer. Contact Susan Burch, H&PE, ext. 2556, or 343-9428.

FOR SALE: ENTERTAINMENT '93 BOOKS, \$30. Contact Paula Chan, KLCC, ext. 2486, or evenings 344-8858. Money goes to Big Brother/Big Sister programs.

HOLIDAY ART SALE, Saturday, Dec. 5, 4270 North Shasta Loop, 10 a.m.-6 p.m. Lisa Henry and Cheryl Kempner have created ornaments, porcelain bowls, hand-painted silk scarves, porcelain and glass earrings, pins and necklaces, paintings, porcelain angels and painted shirts. Contact Cheryl for a map, ext. 2844, Study Skills.

IT'S NOT PRETTY BUT IT IS RELIABLE. 1981 Datsun pick-up, king cab, jump seats, air, AM/FM, automatic transmission, good tires, new brakes, 145,000 miles and still going strong. Would make a great commuter vehicle (25 mpg) or carry-all for small acreage. \$1,000 OBO. Bob Boettcher, Science, ext. 2446, or 683-4918.

FOR SALE: ENTERTAINMENT '93 BOOKS, \$30. Contact Bob Cudmore, Purchasing, ext. 2571. Money goes to buy boy's basketball uniforms.

Deadlines - Deadline for The Daily is 12-noon of the day prior to publication on Mondays, Tuesdays, Wednesdays, and Thursdays. Submissions must be made in writing and include first and last name, department, and extension number. Send to The Daily in intercampus mail or deliver to Admin. 210. All items will be published at least once.

The Daily

Edited by Joan Aschim

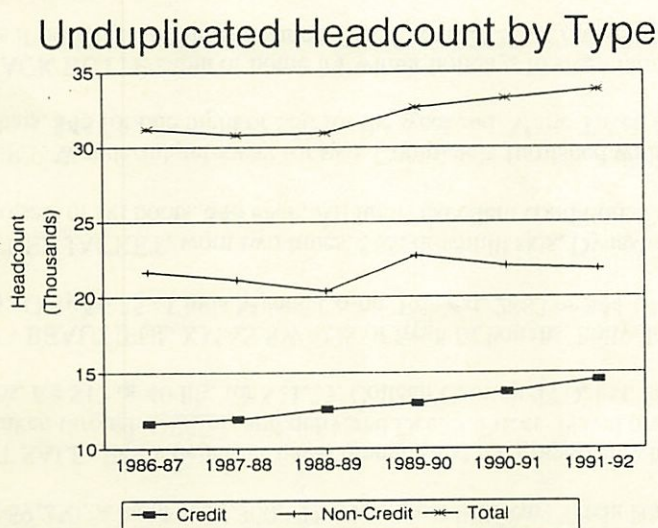
Published for the staff of Lane Community College

747-4501, ext. 2591

Monday, November 30, 1992

Tenth week of fall term

KEY BENCHMARKS LANE COMMUNITY COLLEGE Student Headcount



- ✓ Over the past six years, there has been a 24.6% increase in credit student headcount.
- ✓ Over the six-year period, non-credit student headcount has remained fairly stable.
- ✓ Total unduplicated student headcount has increased by 8.4% since 1986-87. It reached an all-time high of 33,778 in 1991-92.

SOURCE: Term Headcount Reports
Research, Planning and Evaluation
September 15, 1992

Legislative intern orientation to be today

State Senator Grattan Kerans will lead an orientation for all students wishing to intern with the Oregon Legislature in Salem starting in January. The orientation will be held today from 3-4 p.m. in Center 402. Contact Steve Candee at ext. 2188.

Mayor to speak

Springfield Mayor Bill Morrisette will speak to Steve Candee's State and Local Government class on Friday, Dec. 4, from 9-10 a.m. in Center 402. Guests are welcome.

Staff invited to holiday salad potluck

Come enjoy holiday cheer at the Lane chapter of the American Association of Women in Community Colleges' salad potluck on Dec. 18 in the Board Room. AAWCC members, guests and friends are invited. Bring a salad and serving utensil. Table service and beverages will be provided. Come and go as you wish from 11:30 a.m. to 1 p.m. Please RSVP to Velma Jesser, ext. 2018, so we can plan accordingly.

Global T-shirts and bags for sale

International students will have three styles of T-shirts and two styles of canvas bags for sale in the Cafeteria on Wednesday, Dec. 2, at 10 a.m. Price range is from \$12 to \$14 per item. These make great Christmas gifts. Come early for best selections. - Pat Williams, ext. 2165

Multi-Cultural Center and ASLCC hold annual open-house

The Multi-Cultural Center staff and ASLCC are hosting their annual open-house Thursday, Dec. 3, from 1:30 to 4 p.m. in Center 419. Refreshments and entertainment will be provided. Mr. Joe Maquehue, a Mapuche Indian from Chile will deliver a unique musical performance. All staff are invited to attend. - Don Addison or Clara Lindstrom, ext. 2276

Pers variable annuity election should be considered now

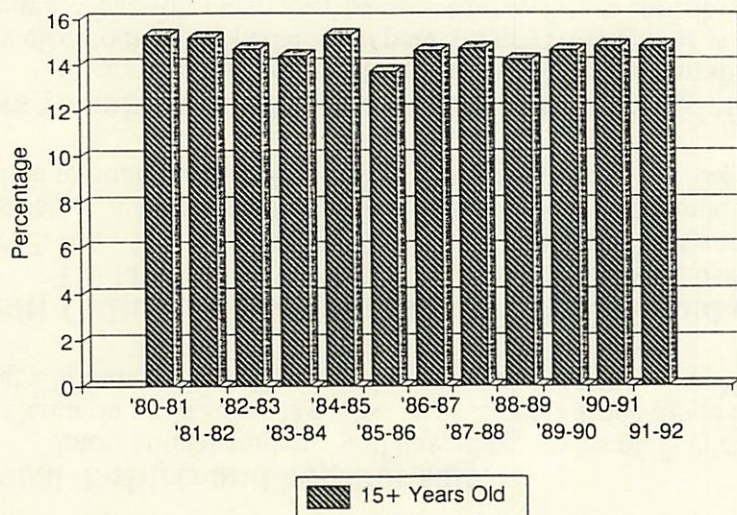
December is the month to think about filing a Variable Annuity Election form with PERS. You may elect to have 25 percent, 50 percent, or 75 percent of your yearly contributions placed in the program. The form also may be used to stop future contributions to the variable program or to change the percentage of future contributions. All elections take effect Jan. 1, 1993. PERS will not accept forms after that date. For further details or to obtain a form, contact Vicki Ellison, Personnel, ext. 2589.

Thank you

The Faculty Professional Development Team wishes to thank the following people for helping to make the All Staff Roundup lots of fun and a great success. There were over 80 staff in attendance. Thanks go to Nancy Anderson, Julie Baker, Jane Benjamin, Steve Bilinski, Tom Birkenhead, Joe Farmer, Joe Freeman, Willie Kealoha, Phil Powers, Chuck Reid, Judith Scher, Bob Tegge, Larry Warford, Bob Way and Carol Woodman. Thanks, also, to Diane Dann, Shelly Dutton, Driftwood Shores, and The Hilton Hotel for providing door prizes and to Coca Cola Company for providing drinks. - Linda Myers, ext. 2883

KEY BENCHMARKS
LANE COMMUNITY COLLEGE
Percentage of County Population Served

Residents Over Age 15 Who Enroll



- ☒ The percentage of county population over age 15 served by Lane has remained fairly stable since 1980-81.
- ☒ The percentage served peaked in 1980-81, 1981-82, and 1984-85, during the early years of outmigration from the county.

SOURCE: Headcount Reports; Center for Population Research & Census (PSU)
Research, Planning and Evaluation
September 15, 1992

Exit interviews scheduled

Federal regulations require that students receiving a Stafford Student Loan or SLS Loan while attending Lane must attend an exit interview during their last term of attendance. The exit interview outlines financial planning, disclosure statements, repayment procedures, how to correspond with the lender, secondary markets, loan consolidation, options for making payments, and the consequences of default. Sessions will begin on time and latecomers will not be admitted. Sessions last about 50 minutes. The interviews will be held in Forum 308 on Tuesday, Dec. 1, at 10 a.m., 2 p.m. and 6 p.m.; and on Wednesday, Dec. 2, at 9 a.m., 1 p.m. and 4 p.m.

ADS

SANDER, new, in box, Makita dual action, \$50 OBO. BICYCLE: Schwinn 26" 10-speed, recent tune-up, \$35 OBO. CARPET: new, approx. 12'x12', plush green, \$115 OBO. Dan Fite, ABE, ext. 2917, or 345-2400.

RENTAL NEEDED: Jim Wychules, new Foodservices manager, wants to rent a small apartment or room with bath while relocating, beginning about mid-Dec. Non-smoker. Call 916-225-4733 (work) or 916-223-3435 (home). Sandy Ing, Student Support, ext. 2666.

FOR SALE: 1990 HONDA CIVIC SI HATCHBACK. 38,000 miles. Red, moon roof, cassette deck. One owner, all records. High blue book \$9,250. A steal at \$8,300. This is a great little car! Tricia Hahn, ext. 2395, Soc. Sci., home 342-2570.

CITRUS FRUIT SALE: Enjoy delicious navel oranges and red grapefruit while you support the Oregon Children's Choir. Orders will be taken through DEC. 1 and delivered Dec. 5. Prices: Navel oranges, 20 lbs. for \$13 or 40 lbs. for \$23.50; red grapefruit, 20 lbs. for \$12 or 40 lbs. for \$21.25. Colleen Cairney, ITD, ext. 2843.

BACK AGAIN - BEAUTIFUL XMAS SWAGS of fresh fir boughs, holly, lovely plaid ribbons, and red velvet ornaments (snow optional). Only \$6.25 - Linda Myers, Co-op. Ed., ext. 2883 or 344-6483.

LADIES LEATHER JACKET, worn two times, \$85; downhill skis, Dynastar & Solomon bindings, \$85; ski goggles, \$10; gloves, \$10; two sets of ski boots, \$45 each. All items excellent condition. Contact Patti Bonitz, SCP, 683-8043.

YACHATS YURT. Wonderful get-away for two. Completely furnished with full kitchen and bath on first street in beautiful downtown Yachats. \$45 for one night or \$80 for the weekend. Marje Takei, Counseling, ext. 2204, or 485-4768.

WANTED: BLACK BUTTE cabin or home for winter holidays to sleep family of six. Prefer the week between Christmas and New Year's if possible. Julianne Stermer, F&HC, ext. 2527 or 726-4942.

FOR SALE: ENTERTAINMENT '93 BOOKS, \$30. Contact Paula Chan, KLCC, ext. 2486, or evenings 344-8858. Money goes to Big Brother/Big Sister programs.

HOLIDAY ART SALE, Saturday, Dec. 5, 4270 North Shasta Loop, 10 a.m.-6 p.m. Lisa Henry and Cheryl Kempner have created ornaments, porcelain bowls, hand-painted silk scarves, porcelain and glass earrings, pins and necklaces, paintings, porcelain angels and painted shirts. Contact Cheryl for a map, ext. 2844, Study Skills.

IT'S NOT PRETTY BUT IT IS RELIABLE. 1981 Datsun pick-up, king cab, jump seats, air, AM/FM, automatic transmission, good tires, new brakes, 145,000 miles and still going strong. Would make a great commuter vehicle (25 mpg) or carry-all for small acreage. \$1,000 OBO. Bob Boettcher, Science, ext. 2446, or 683-4918.

FOR SALE: ENTERTAINMENT '93 BOOKS, \$30. Contact Bob Cudmore, Purchasing, ext. 2571. Money goes to buy boy's basketball uniforms.

Deadlines - Deadline for The Daily is 12-noon of the day prior to publication on Mondays, Tuesdays, Wednesdays, and Thursdays. Submissions must be made in writing and include first and last name, department, and extension number. Send to The Daily in intercampus mail or deliver to Admin. 210. All items will be published at least once.