

# The Daily

Edited by Joan Aschim

Published for the staff of Lane Community College

747-4501, ext. 2591

Monday, March 1, 1993

Week 9 of winter term

## **One more budget information session scheduled for administrators**

Budget administrators and their assistants unable to attend last week's information sessions on detail expenditure reports (DERs) may attend one more meeting scheduled for Tuesday, March 2, from 10-11:30 a.m., in the Board Room.

## **College Council agenda**

College Council meets Tuesday, March 2, from 1:30-3 p.m. in the Board Room. On the agenda:

- board agenda for March 10
- contracted part-time faculty issues
- surplus property procedures
- vision development

College Council's next meeting will be Tuesday, March 30, 3-5 p.m. in PE 205.

## **Budget Committee and Board of Education to meet**

The LCC Budget Committee will meet for an orientation on Tuesday, March 2, at 6:30 p.m. in the Board Room. The LCC Board of Education will hold work session to review the college's fiscal situation for 1993-94 at 7:30 p.m., same date and place.

## **Marion Malcolm to speak on political activism**

Marion Malcolm, Program Coordinator for Clergy and Laity Concerned (CALC), will speak in Jerome Garger's Peace and Conflict Studies class on Tuesday, March 2, in Center 449 from 7:15 to 8:30 p.m. Her topic: "The Joy and Satisfaction of Political Activism." Guests welcome.

## **Diversity series looks at Asian culture**

"Asian Culture through the Martial Arts" is the topic of the next "Issues in Cultural Diversity" seminar series. It will be held Tuesday, March 2, from 3-4:30 p.m. and again from 5:30-7 p.m. in Apprenticeship 216. For more information, call Vicki Levine at ext. 2074.

## **High school students on campus for skills contest**

The Eighth Annual Occupational Skills Contest is coming to main campus on Wednesday, March 3, from 8:30 a.m. to 2 p.m. Approximately 550 district high school students will be compete in business education, drafting, construction, culinary arts, child development, job interview, machine technology, computer aided manufacturing, welding/cutting, and woodworking contests. Campus tours will be offered. An awards ceremony will be held in PE 202 from 1-2 p.m.

## **Limited service**

Bookstore staff will attend in-service on Thursday, March 4th. Minimal assistance will be available on a one to one basis from 8 a.m. to 12 p.m. and 1 p.m. to 4:30 p.m. Please call ext. 2256 before you come.

## **Legislative Action Team to meet**

The Legislative Action Team will meet Thursday, March 4, at 7:30 a.m. in the Board Room.

## **Transition team to meet**

The Transition Planning Team will meet Thursday, March 4, from 2-3 p.m. in PE 205.

## **Faculty writing contest deadline nears**

"My Best Moments of Teaching at Lane Community College" is the theme of a faculty writing contest sponsored by Institutional Advancement in connection with "April is Community College Month." Submission deadline is March 5 at 4 p.m. First prize is \$100. For guidelines, call Sharon Thomas at ext. 2145.

## **Surplus property available to departments**

Lane has finalized its agreement to dispose of surplus property through the Oregon State University public auction process. We're hopeful that his process will not only result in a fair return for our used equipment but will enable us to recoup the money and credit your accounts faster than in the past. Before we ship surplus property to OSU we want to be sure that all departments have had ample opportunity to examine and request this equipment if it can be put to use within the college for college, not personal, use.

Surplus property destined for auction will be available for viewing on Tuesday, March 9, from 1-4 p.m. If you can't come during that time, contact Bob Cudmore at ext. 2208 for additional information and special viewing appointments. We will report on the OSU role in the disposal of our surplus property in the Daily. - Lloyd Rain, Purchasing Services, ext. 2208



### Foodservices adds espresso cart

Foodservices announces the opening of the LCC Espresso Corner. A complete espresso service now is located in front of the main campus cafeteria. It's open Monday through Thursday from 7 a.m. to 7 p.m., and Fridays from 7 a.m. to 4 p.m. Come on in and check it out! - Jim Wychules

### Library appreciated

Thanks to the Library staff for their competent, quick and cheerful responses to numerous and tiresome requests from the President's Office for inter-library loan materials, ERIC searches and copies of journal articles. Your dedication to serving students and staff is appreciated!

### Special thanks

To my LCC family: It has been very difficult to think how to express my appreciation for the wonderful retirement party and gifts that were given to me on January 28. The microwave oven will work beautifully in our old motor home and the money will allow us to enjoy a nice trip. The clock from LCCEF will keep me right on time for whatever lies ahead. Thanks for all the other lovely cards, flowers, sweatshirt, and more! But most of all, I thank you from the bottom of my heart for the love and friendship you have shared with me for the past 14-1/2 years. We have laughed together, cried together, shared happy times and some very sad times. I have been a pain in the neck to some, but maybe I have helped someone through a bad time as well. I hope so. But that is what families are all about. Now, I will soon be out in the cruel world with out all your support. I may have to come back now and again to get a lift from you all. If good friends walk beside you on the trails that you must keep, not a load will seem too heavy nor a hill will be too steep. I thank God for good friends such as I have known at Lane Community College. Take good care of one another. Until we meet again, thank you all! - Joyce Kofford

### KLCC/KLCO to air National Public Radio series on education

KLCC/KLCO will air National Public Radio's series, "Wingspread: Contemporary Issues in Education," for six consecutive Tuesdays at 6:30 p.m. beginning Tuesday, March 9. The series was produced at the Johnson Foundation's Wingspread Conference Center in Racine, Wisc. The programs represent a gathering of the top educational authorities in an informal give-and-take. They offer listeners an opportunity to hear about the challenges facing the nation's schools as well as a number of innovative solutions which may find their way into the Clinton administration's legislative program. Each program features one or more specialists analyzing a single topic. The program dates and titles are as follows:

- March 9 - Performance Assessment, The Future of School Reform
- March 16 - Essential Skills for Effective Site-Based Management
- March 23 - School Reform and the Promise of Outcome-Based Measure
- March 30 - Collaboration Between Educational and Social Service Systems
- April 6 - It Can Be Done: Models for Collaboration.
- April 13 - The Fascination of What's Difficult: Overcoming the Barriers to Collaboration

### Career Fair '93: Explore the possibilities

*"Everything was wonderful. LCC is great!" - Geraldine Smith, Career Fair '92*

Career Fair '93 will be held Wednesday, April 14, from 10 a.m. to 2 p.m. on main campus. Employers will share information about their businesses and career opportunities for students, graduates and the general public. For details, call the Job Placement Office at ext. 2326.

### Exit interview required

Federal regulations require that students receiving a Stafford Student Loan or SLS Loan while attending Lane must attend an exit interview during their last term of attendance. The exit interview outlines financial planning, disclosure statements, repayment procedures, how to correspond with the lender, secondary markets, loan consolidation, options for making payments, and the consequences of default. Student loan exit interviews for winter term will be held on Thursday, March 4, at 10 a.m. in Forum 309, 2 p.m. in Forum 310, and 6 p.m. in Forum 307; and Friday, March 5, at 9 a.m. in Forum 309, 1 p.m. in Forum 308, and 4 p.m. in Forum 307.

---

#### - ADS -

FREE KITTEN: Our youngest daughter has moved into a "non-pet" apartment thus endowing us with one white-with-black-spots kitten, female, about eight months old, all shots. This kitten comes free with litter tray, transport cage and lots of playfulness. Call Lloyd Rain (Work: ext. 2208; Home 726-2000).

FOR SALE: 1982 VW Rabbit. Very reliable, gets great gas mileage, new tires, new front brakes, and much more!! \$1,600. Call Melanie Martin, Health and P.E., ext. 2545 or 683-8435.

FOR SALE: Neck and back pillows made out of corduroy (\$7) or satin (\$8). These pillows are great for relieving soreness, discomfort, and stress. Any color to match your decor and/or car interior. Call Diane Morrow, ext. 2164.

GIRL SCOUT COOKIES, order through March 14, delivery April 2-18. \$3/box. Call 485-6197, or Carolyn Haynes, Math, ext. 2121.

FOR SALE: 1987 CAMARO sport coupe, V6, automatic, air, cruise, AM-FM stereo cassette, tilt, red w/black interior. Excellent condition. \$4,500. Joe Farmer, Foundation, ext. 2810; or Cindi Farmer, M&AT, ext. 2475. 746-9458.

DEADLINE for The Daily is 12-noon of the day prior to publication on Mondays, Tuesdays, Wednesdays, and Thursdays. Submissions must be made in writing and include first and last name, department, and extension. This information is required to be printed with ads. Ads will run at least once but no more than three times per quarter. Priority will be given to new items.



# The Daily

Edited by Joan Aschim

Published for the staff of Lane Community College

747-4501, ext. 2591

Tuesday, March 2, 1993

Week 9 of winter term

## **LCCEF members to vote**

Members of the Lane Community College Employees Federation will vote for delegates to the OFTHEP and AFL-CIO conventions on Wednesday, March 3, at 12-noon and 5 p.m., in Forum 308.

## **Management development committee to review applications**

The Management Personal and Professional Development Committee will meet Wednesday, March 17, to review applications for both personal and professional development. Applications should be submitted by Friday, March 12. Late or incomplete applications cannot be reviewed. For forms and guidelines, contact Lloyd Rain in Purchasing Services at ext. 2208.

## **Employee perception survey results distributed**

A survey of Lane's contracted employees' perceptions of college service areas was conducted in spring 1992 as part of Lane's ongoing internal means for evaluating all instructional and non-instructional units. There were 96 service areas included in the survey. The results were distributed to departments a few weeks ago. About 75 percent of Lane's service areas and instructional support units received an above average rating. For more information, contact Larry Brown, Research, Planning & Evaluation, ext. 2580. - excerpted from "Research Briefings" February 1993

## **Forestry issues teleconference is Friday**

The "Northwest Forest Summit: From Stalemate to Solutions," teleconference to be held at the UO will be received via ED-NET at Lane in Center 10 on Friday, March 5, from 2:30-5:30 p.m. Call Telecourses at ext. 2260 to pre-register, or tune in to KLCC. Panelists will represent both environmentalist and timber industry concerns.

## **Foodservices seeks feedback about proposed changes**

Foodservices proposes keeping the snack bar grill open until 7 p.m. Monday through Thursday, and adding a vending machine with microwaveable hot and cold foods and beverages. Comments are welcome at ext. 2672 or in the suggestion box in the main cafeteria.

## **Ideas needed for all staff social**

Lets have fun at Lane. Come and help plan another fun filled ALL staff social for spring term. Bring your ideas to a planning meeting March 11, 3-4 p.m. in Apr. 212. Contact Linda Myers, ext. 2883 for additional information.

## **Instructors' poems published**

LCC English instructors Peter Jensen and Erik Muller along with Eugene writer David Johnson selected their best works for a newly published book of poetry titled "Confluence--Selected Poems." The book is illustrated by Susan Applegate. It was published by Walking Bird Press. The 118-page volume is available in paperback for \$10. The anthology received a favorable mention in "The Oregonian" of Dec. 4, 1992, and an in-depth review in "The Register-Guard" of Feb. 21, 1993. Local reviewer Kerry May wrote that the book is "a fine volume of poems, a fine work of art, a worthy investment."

## **Time to order your cap and gown**

The Bookstore says faculty should order caps and gowns for graduation from March 8 through April 2. Reservations must be made by past participants. A drawing for a \$25 gift certificate will be held for everyone who orders by 4:30 p.m. on April 2.

## **Survey finds support for Cottage Grove proposal**

Results are in from a Cottage Grove area survey to gauge the level of support for a proposed facility to house the local high school, city library, and LCC at Cottage Grove. The findings include:

- 57% of respondents said a household member had taken a class at the LCC center.
- Those who had taken classes rated college services higher than those who had not.
- Those who had taken classes rated the LCC facility as lower in quality than those who had not.
- 30% of respondents plan to take a course at the LCC center within the next year.
- 57% of respondents said the LCC center makes a positive difference to local job training.
- 63% supported the concept of a joint-use facility.
- 74% said that South Lane School District, Cottage Grove City Library, and LCC should share tenancy.
- Respondents believed the major advantages of joint tenancy would be convenience and cost savings.

A copy of the study is available from Research, Planning & Evaluation, ext. 2576.



### Ornithology class offered

Don't miss this class that missed the spring class schedule: "Bird Identification," to be held Saturdays from 8-11 a.m. beginning April 3 for 10 weeks. The instructor is Dennis Arendt. Field trips will include excursions to the ocean and the Finley Wildlife Refuge. For more information, call Continuing Education at ext. 2252.

### Spring radiothon nears

KLCC/KLCO's semi-annual on-air campaign for new members and membership renewal begins Thursday, March 11. The spring radiothon goal is \$89,700. As always, many premiums will be offered. KLCC/KLCO depends on listener contributions for 27 percent of its total operating budget. To renew membership, call ext. 2224. New members may call ext. 2218 beginning March 11.

### Vision tests rescheduled

A free vision screening clinic that was not held due to the snow has been rescheduled for Friday, March 5, from 1-3 p.m. in the Study Skills lab on fourth floor Center. No appointment necessary. Please announce in your classes. For more information, contact Linda Wong at ext. 2440.

### Call for papers

- Sixth International Conference on "The First Year Experience," Boston College, July 10-13, deadline May 15.
  - Northwest Conference on British Studies will hold its 25th Annual Meeting at Clark College, Vancouver, WA, on October 22-23. Proposals for papers and panels covering any aspect of British studies are being sought by June 1.
  - 1993 Annual Conference of the League for Innovation in the Community College Call for Presentations: "Reinventing the Community College: Using Information Technology...To Do Things Differently...To Do Different Things," Nov. 14-17, Nashville. Deadline: March 26.
- For further information, contact Julie Baker, ext. 2199.

### March conferences

- "Assessing Employee Performance," LCC DTC, March 3, \$48 plus tuition waiver. See page 27 of winter schedule.
  - "Balancing Work and Family," LCC DTC, March 5, \$38 plus tuition waiver. See page 27 of winter schedule.
  - "Developing A Comprehensive Faculty Evaluation System: The Role of Peers, Students, and Supervisors in Evaluating College Faculty," San Francisco, March 8-10, \$375.
  - "Effective Workplace Writing Skills," LCC DTC, March 9, \$38 plus tuition waiver. See page 27 of winter schedule.
  - "Successful Presentation Skills For Women," Portland, March 11, \$125.
  - "How To Deal With Nonstop Change," OSU, Corvallis, March 12, \$75. (Graduate credit available for an additional \$40.)
  - "1993 National Conference on Higher Education: Reinventing Community - Sustaining Improvement During Hard Times," Washington, D.C., March 14-17, \$305.
  - "How To Manage Conflict And Maintain Emotional Control," Eugene, March 15, \$49.
- For further information, contact Julie Baker, ext. 2199.

### Marion Malcolm to speak on political activism

Marion Malcolm of Clergy and Laity Concerned will discuss political activism in Jerome Garger's Peace & Conflict Studies class on March 2 in CEN 449, 7:15-8:30 p.m. Guests welcome.

---

#### - ADS -

FOR SALE: DOUBLE BED with mattress, box spring and headboard, \$75. Also: '86 Mazda 323, 5 speed, 4-door, good condition, \$3,300. Call Sue Zink at AHS, ext. 2214 or 461-2363.

SUSANNAH NEEDS A NEW HOME. Healthy, two-year-old spayed female tortoise colored cat. Declawed, so strictly a house cat. Ideal for older person or quiet environment. Daughter's landlord said no pets. Julie Baker, CED, ext. 2199.

HORSE FOR SALE: 5 year old Bay gelding. Sound, ridden on trails. \$800 includes some tack. Contact robin Ware, Childcare Co-op, ext. 2025 or 933-2083.

APPLE IMAGE WRITER II printer for sale with Adobe Type Manager. Perfect condition. \$250. Call Nancy Hoskins at 747-1175. (Art, ext. 2409)

FOR SALE: 1982 VW Rabbit. Very reliable, gets great gas mileage, new tires, new front brakes, and much more!! \$1,600. Call Melanie Martin, Health and P.E., ext. 2545 or 683-8435.

FREE KITTEN: Our youngest daughter has moved into a "non-pet" apartment thus endowing us with one white-with-black-spots kitten, female, about eight months old, all shots. This kitten comes free with litter tray, transport cage and lots of playfulness. Call Lloyd Rain (Work: ext. 2208; Home 726-2000).

FOR SALE: Neck and back pillows made out of corduroy (\$7) or satin (\$8). These pillows are great for relieving soreness, discomfort, and stress. Any color to match your decor and/or car interior. Call Diane Morrow, ext. 2164.

GIRL SCOUT COOKIES, order through March 14, delivery April 2-18. \$3/box. Call 485-6197, or Carolyn Haynes, Match, ext. 2121.

DEADLINE for The Daily is 12-noon of the day prior to publication on Mondays, Tuesdays, Wednesdays, and Thursdays. Submissions must be made in writing. Ads must include first and last name, department, and extension. Ads will run at least once and repeated if space permits. Priority will be given to new items.



# The Daily

Edited by Angela Miller

Published for the staff of Lane Community College

747-4501, ext. 2591

Wednesday, March 3, 1993

Week 9 of winter term

## Ron and Linda Williams performing benefit concert for KLCC

A very special evening of entertainment will take place on Wednesday, March 24 at the LCC Performing Arts Theater. Beginning at 8 p.m., folk artists Robin and Linda Williams will bring their notable harmonies and enduring story-songs to Eugene for a benefit performance for KLCC.

In their 20th year together, Robin and Linda Williams are celebrating their successful partnership with a tour and the release of two new recordings. Their career has produced ten recordings, numerous television and festival appearances, and most notably a regular spot on Garrison Keillor's "A Prairie Home Companion" and "American Radio Company." Together with Keillor, the Williams created the characters of Mavis and Marvin Smiley, favorites of "A Prairie Home Companion" listeners.

On this tour, they are joined on bass by Jim Watson and dobro by Kevin Maul, both adding their hot licks and vocal harmonies to round out "Their Fine Group."

Proceeds from this concert will go towards the KLCC general fund. KLCC is committed to providing folk music to its audience with weekly programs "Friends and Neighbors," "The Back Porch," "Saturday Cafe," and "Mist Covered Mountain" as well as annual live broadcasts of the Willamette Valley Folk Festival. KLCC is continually seeking ways to raise funds off the air. Listeners are persuaded to support this event to encourage future off-air fundraising, while enjoying a guaranteed great evening of original folk music!

Tickets are \$7 in advance and \$9 the day of the show. Tickets can be purchased in advance through KLCC and LCC Performing Arts Theater. Tickets can also be charged by phone through the KLCC main office. For more information, contact KLCC, ext. 2224.

## LCC Chamber Orchestra to perform

LCC Chamber Orchestra will be in concert Thurs., March 4 at 8 p.m. in the LCC Performing Arts Theater. The evening's program will include the overture, "If I Were King" by Adolf Adam; Brandenburg Concerto #4 featuring violin soloist, Lisa Bieber and flute soloists, Gina Pfaff and Melinda Teutschel; Clarinet Concerto #1 in C Minor by Lois Spohr featuring clarinet soloist, Carol Robe; and the first movement of Joseph Hayden Symphony #104, The London Symphony.

This special attraction offers quality performances from Eugene's professional community and students as well. Lisa Bieber is a member of the Eugene Symphony and Concert Master of the Eugene Festival of Musical Theater. Carol Robe, first clarinet for Eugene Opera Orchestra is, also, a member of the Eugene Symphony Orchestra and the Oregon Mozart Players. Soloist Gina Pfaff is a music major at the UO and Melinda Teutschel is a music major at Lane.

For more information, contact LCC Performing Arts, ext. 2209.

## Titan women earn top seed and berth in playoffs

LCC women's basketball team advances to the NWAACC tournament with 70-59 victory over Chemeketa and a record of 22-5 for the season. Lane Coach, Dave Loos says, "These girls are real cohesive. Look up the word 'team' in the dictionary and you'll see their picture."

The tournament will be held March 4-6 in Mt. Vernon, Wash. The Lane women will play Pierce College of Tacoma Wash. Thurs., March 4 at 2:30 p.m. The winner will advance and play the winner of the Skagit Valley-Yakima Valley game. Should the Titan women lose, they will play in the consolation bracket against the loser of Skagit Valley-Yakima Valley game.

## Forestry issues teleconference is Friday

The "Northwest Forest Summit: From Stalemate to Solutions," teleconference to be held at the UO will be received via ED-NET at Lane in Center 10 on Friday, March 5, from 2:30-5:30 p.m. Call Telecourses at ext. 2260 to pre-register, or tune in to KLCC. Panelists will represent both environmentalist and timber industry concerns.

## New Omnitek prices

As you know, the College has a requirements contract with Omnitek to furnish "386" and "486" microcomputers. The contract provides for renegotiation of the prices every three months. New prices are based upon changing conditions in the market including cost of parts and labor. New prices have now been set for the three-month period, March 11 through June 10. They are shown in the right column below:

	Initial Price (March '92)	Previous Price (Dec. '92)	New Price (effective March 11)
"386" (Complete)	\$1,754	\$1,597	\$1,546
"486" (Complete)	2,101	1,951	1,896
4 MB Upgrade	164	180	164

These machines are "loaded" with multi megs and ports; they include DOS and Windows. For more information and spec sheets on the machine configurations, call Lloyd Rain, ext. 2208.



### More March conferences

- "Coaching Skills for Managers and Supervisors," Eugene, March 16, \$99.
  - "How To Build A Better Team," Eugene, March 16, \$125.
  - "Management And Leadership Skills For Women," Eugene, March 16, \$79.
  - "Dealing With Employee Conflicts," LCC DTC, March 18, \$48 plus tuition waiver. See page 27 of winter schedule.
  - "Team Leadership: How To Inspire Commitment, Teamwork and Cooperation," Eugene, March 23, \$125.
  - "Time Power," Portland, March 23-24, \$295.
  - "WordPerfect For Windows: Power Tips And Techniques," Portland, March 31, \$125.
- For more information, contact Julie Baker at ext. 2199.

### Vision screening tests rescheduled

Free vision screening tests, originally scheduled in February and canceled due to the snow, have been rescheduled for Fri., March 5, from 1-3 p.m., in the Study Skills Lab on the fourth floor of the Center Building. Vision therapists will be available to discuss the results of screening tests. No appointment is necessary. This opportunity is provided by the Learning Support Group, Disabled Student Services, and Student Health Services. Instructors, please pass this information along to students.

### LCCEF members to vote

Members of the Lane Community College Employees Federation will vote for delegates to the OFTHEP and AFL-CIO conventions on Wednesday, March 3, at 12-noon and 5 p.m., in Forum 308.

### Exit interview required

Federal regulations require that students receiving a Stafford Student Loan or SLS Loan while attending Lane must attend an exit interview during their last term of attendance. The exit interview outlines financial planning, disclosure statements, repayment procedures, how to correspond with the lender, secondary markets, loan consolidation, options for making payments, and the consequences of default. Student loan exit interviews for winter term will be held on Thursday, March 4, at 10 a.m. in Forum 309, 2 p.m. in Forum 310, and 6 p.m. in Forum 307; and Friday, March 5, at 9 a.m. in Forum 309, 1 p.m. in Forum 308, and 4 p.m. in Forum 307.

### PERS survey planned

The Public Employees Retirement System will be conducting a random sample survey of LCC PERS employees sometime in the next few months to gather information on PERS publications in terms of their understandability, usefulness, and timeliness. This will be a telephone survey of no longer than five minutes. If you have questions, contact Judy Ward, Personnel Services at ext. 2583.

### Raffle to benefit campus ministry

Raffle tickets are now available in the Bookstore and Campus Ministries office for a crocheted afghan and quilt rack which is on display in the bookstore. Tickets are being sold on a donation basis for \$1 per ticket or \$5 for six tickets. The drawing will be held March 16, at 2 p.m.

---

#### - ADS -

FOR SALE: DOUBLE BED with mattress, box spring and headboard, \$75. Also: '86 Mazda 323, 5 speed, 4-door, good condition, \$3,300. Call Sue Zink at AHS, ext. 2214 or 461-2363.

SUSANNAH NEEDS A NEW HOME. Healthy, two-year-old spayed female tortoise colored cat. Declawed, so strictly a house cat. Ideal for older person or quiet environment. Daughter's landlord said no pets. Julie Baker, CED, ext. 2199.

HORSE FOR SALE: 5 year old Bay gelding. Sound, ridden on trails. \$800 includes some tack. Contact Robin Ware, Childcare Co-op, ext. 2025 or 933-2083.

APPLE IMAGE WRITER II printer for sale with Adobe Type Manager. Perfect condition. \$250. Call Nancy Hoskins at 747-1175. (Art, ext. 2409)

FOR SALE: 1982 VW Rabbit. Very reliable, gets great gas mileage, new tires, new front brakes, and much more!! \$1,600. Call Melanie Martin, health and P.E., ext. 2545 or 683-8435.

FREE KITTEN: Our youngest daughter has moved into a "non-pet" apartment thus endowing us with one white-with-black-spots kitten, female, about eight months old, all shots. This kitten comes free with litter

tray, transport cage and lots of playfulness. Call Lloyd Rain (Word: ext. 2208; Home 726-2000).

FOR SALE: Neck and back pillows made out of corduroy (\$7) or satin (\$8). These pillows are great for relieving soreness, discomfort, and stress. Any color to match your decor and/or car interior. Call Diane Morrow, ext. 2164.

GIRL SCOUT COOKIES, order through March 14, delivery April 2-18. Call 485-6197, or Carolyn Haynes, Match, ext. 2121.

FOR SALE: 1987 CAMARO sport coupe, V6, automatic, air, cruise, AM-FM stereo cassette, tilt, red w/black interior. Excellent condition, \$4,500. Joe Farmer, Foundation, ext. 2810; or Cindi Farmer, M&AT, ext. 2475. 746-9458.

DEADLINE for The Daily is 12-noon of the day prior to publication on Mondays, Tuesdays, Wednesdays, and Thursdays. Submissions must be made in writing. Ads must include first and last name, department, and extension. Ads will run at least once and repeated if space permits. Priority will be given to new items.



# The Daily

Edited by Joan Aschim

Published for the staff of Lane Community College

747-4501, ext. 2591

Thursday, March 4, 1993

Week 9 of winter term

## Board, council and branch meetings

- Administrative Services managers, Tuesday, March 9, 8:30-10 a.m., PE 205. For details call ext. 2311.
- Board of Education, Wednesday, March 10, 7:30 p.m., Board Room. For details call ext. 2202.
- CED Cabinet, Monday, March 15, 1:30-3:30 p.m., Board Room. For details call ext. 2302.
- Classified Council, Wednesday, March 10, 3-5 p.m., PE 205. For details call Gloria Jarvis, ext. 2604.
- College Council, Tuesday, March 30, 1:30-3 p.m., Board Room. For information call ext. 2313.
- Faculty Council, March 11, 3-4:30 p.m., Board Room. For information call David Sherman, ext. 2143.
- Instructional Cabinet, Wednesday, March 10, 1:30-3 p.m., Board Room. For details call ext. 2306.
- Managers' Forum, Friday, March 12, 8:30 a.m., Forum 309. For details call Marie Matsen, ext. 2313.
- Student Services directors, Wednesday, March 17, 9-10:30 a.m., Admin. 206. For information call ext. 2315.

## Management Evaluation Committee formed

President Moskus has appointed a Management Evaluation Committee to implement evaluation procedures developed by the Management Steering Committee in 1992. The initial meeting of the evaluation committee will be held on Thursday, March 4, at 4 p.m. in PE 205. For further information, contact Larry Brown, chair, ext. 2500.

## You be the judge

The Professional Ethics Task Force recently appointed by Jerry Moskus plans a series of forums spring quarter on a variety of campus ethical issues. As a catalyst to provoke thought, we offer the following scenario for your reflection and evaluation.

*Mark and his colleague Bob were walking out to their cars at the end of the day. Bob was struggling with some books, a box and a gym bag. Mark offered to help carry something and in the process of taking the box it fell to the ground. The contents spilled out. Inside was a ream of paper, a stapler, tape, and pens, among other things. Bob seemed a little embarrassed. He told Mark that he needed the supplies at home, where he did much of his work. What should Mark do?*

The best written response of fewer than 100 words will be awarded a free lunch for two in the Renaissance Room and will be printed in a forthcoming "Daily." Please return your response to task force member Sue Colvin in Personnel by March 11.

## Diane Dann wins regional professional award

Diane Dann, director of Institutional Advancement, was named Communicator of the Year for 1993 by District VII of the National Council for Marketing and Public Relations at its annual conference in Portland on Tuesday. The award recognizes leadership in college communications and marketing in the two-year college. It is the district's most prestigious award and qualifies Dann for a national award to be announced in March.

NCMPR is an affiliate of the American Association of Community Colleges. District VII includes two-year colleges in Alaska, Idaho, Montana, Oregon, Washington, and the Canadian provinces of Alberta, British Columbia, Saskatchewan, and the Yukon Territory.

Dann was nominated by her staff and supervisors who cited her for participatory management and professional excellence. She oversees college public relations, marketing, publications, media relations, printing and graphics services, and grants services. She has been with Lane since 1979 and was named department director in July. Under her leadership, the college has won several national communications awards. Her marketing plan has been copied by other colleges across the nation and has been cited in national professional journals.

## Florence campus receives grant for health services training

LCC at Florence has received a \$500 grant from the Western Lane County Foundation to be applied towards purchase of a health services training mannequin. Campus director Bill Porter says the grant will be combined with other existing funding to buy a GDW 2500 Complete Care Doll.

(In an unrelated matter, rumors that Florence classes are using the missing cutouts of Jerry Moskus and Dick Hillier for lack of a mannequin are untrue, say anonymous Daily sources.)

## Printing/Graphics spring term deadline reminder

Printing/Graphics reminds staff to submit orders for materials needed on the first day of spring term by March 15.



### **Dramatic literature recital to be held**

A recital of dramatic literature will be performed on Monday, March 8, at 7 p.m. in the Blue Door Theater. Students in the new course, "Dramatizing Literature," will enact scenes from "Cat on a Hot Tin Roof," "A Doll's House," "Hamlet," "A Midsummer Night's Dream," "Measure for Measure," "Tartuffe," and others. Everyone's welcome and it's free. - Judith "Sparky" Roberts

### **Is there a winner in your closet?**

Campus Ministry announces the "Second Annual LCC Unisex Tacky Tie Classic" to be held on Thursday, April 1, at 12:15 p.m. in the main campus cafeteria. Now is your chance to display that crassly created cravat you once carefully closeted, while taking advantage of the opportunity to compete for the dubious distinction of having your name permanently inscribed on the Truly Tackiest Tie Traveling Trophy. A panel of judges (to be announced) will select the winner. A donation of \$5 for each official entry will be cheerfully accepted to benefit the ministry.

This contest is based on the premise that everyone has seen, given, received, or even worn ties which stretch the limits of bad taste to unprecedented magnitude. Entries must be modeled. Judging will be based on the scope of truly bad taste, individuality/ originality, and lack of any socially redeeming value. Decisions of the judges will be arbitrary, capricious, and absolutely unappealable.

In addition to the grand prize trophy, other prizes will be awarded for best coordinated outfit, and novelty and/or worst original creation. For complete contest rules, contact Marna Crawford at ext. 2814 or Anne Bacon at ext. 2436.

### **Spring term schedule delivered**

The spring class schedule has been delivered to area homes. It lists 1,437 credit class sections and nearly 600 non-credit classes, workshops and seminars. Staff from many departments work together to produce the schedule under the coordination of Susan Sutton of Institutional Advancement.

### **Dick and Jerry update**

Many leads have been offered regarding the whereabouts of Athletics' missing life-size cutouts of Jerry Moskus and Dick Hillier but none has panned out. It has been suggested that a larger reward might help. Through the generosity of an anonymous donor, the reward fund has grown to \$108.13. (Thanks to Peggy Hillier.) Anyone wishing to contribute to the reward fund may do so at the missing persons display on Joyce Kofford's counter on the second floor of the Admin. Bldg.

### **Career Fair '93: Explore the possibilities**

*"This was a very positive experience for me! I have been to thousands of these activities in the last 20 years and this was one of the best!" - Lane County administrator, Career Fair '92*

Career Fair '93 will be held Wednesday, April 14, from 10 a.m. to 2 p.m. on main campus. Employers will share information about their businesses and career opportunities for students, graduates and the public. For details, call the Job Placement Office at ext. 2326.

### **Faculty professional development leave applications due**

Faculty interested in applying for professional development leave during 1993/94 should submit applications by April 15 to Study Skills. Contracted faculty members may apply for up to three terms of paid professional leave to do research, retrain for new assignments at Lane, or return to school. Guidelines/applications are available from Roxanne Flowerday or Pat John in Study Skills at ext. 2439.

### **Faculty short-term training applications due**

Faculty professional activities guidelines and application forms for short-term training are available from Roxanne Flowerday or Pat John in Study Skills at ext. 2439. Applications will be reviewed by a committee served by Doris Burkland, Study Skills; Penny Deggelman, Math; Esther Eno, Business; Julianne Stermer, Family and Health Careers; and Lynne Swift, Training and Development. Deadlines to apply are April 2, April 30 and May 28.

### **Time to order your cap and gown**

The Bookstore says faculty should order caps and gowns for graduation from March 8 through April 2. Reservations must be made by past participants. A drawing for a \$25 gift certificate will be held for everyone who orders by 4:30 p.m. on April 2.

---

#### **- JOBS -**

Administrative Assistant, Campus Services Dept., Administrative Assistant I, closes March 9.

---

#### **- ADS -**

TSA MUTUAL FUND: Seeking other employees interested in adding new mutual fund to LCC available list. Need 9 others. Janus Fund and/or others considered. Julia Munkvold, F&HC, ext. 2636, or 688-6644.

THANK YOU: Muchas gracias to my office manager Debra Lamb and to Loreta Pritchard of Printing/Graphics for your undying support regarding my recent Wings Crossover and ongoing comedy escapades.

I appreciate your support more than words could ever say! Thank you! - Lorna Funnell, Cont. Ed., ext. 2906.

DEADLINE for The Daily is 12-noon of the day prior to publication on Mondays, Tuesdays, Wednesdays, and Thursdays. Submissions must be made in writing. Ads must include first and last name, department, and extension. Ads will run at least once and repeated if space permits. Priority will be given to new items.



# The Daily

Edited by Joan Aschim

Published for the staff of Lane Community College

747-4501, ext. 2591

Monday, March 8, 1993

Week 10 of winter term

## Board agenda

The LCC Board of Education will meet Wednesday, March 10. An executive session will be held from 5:30-6 p.m. in Center 107 to discuss faculty negotiations, followed by a work session to review board policies from 6-7:30 p.m. The regular meeting begins at 7:30 p.m. in the Board Room.

Highlights from the 7:30 p.m. agenda:

- action on whether to eliminate board policy 5154 on student health services
- discussion of Tuition Committee recommendations, including a \$2 increase for 1993-94

## Georgia Nissen named classified employee of the month



*Georgia Nissen (left) shakes hands with VP Linda Fossen.*

Georgia Nissen, administrative assistant for the Business Department, was named Outstanding Classified Employee of the Month for March on Tuesday.

Co-workers and colleagues had many positive things to say. "Georgia keeps this department running. She has the answers or knows where to find them." "Georgia has taken numerous classes for the benefit of the department, from Lotus to math. She learns quickly and shares her expertise with others." She is noted for follow-through, consistency, and forthrightness. "She has high standards, and meets them." To combat stress in the busy department, she jogs, walks and loves good jokes. She listens well and can be trusted with personal and confidential information, say co-workers. "We have great confidence in her." She has been with Lane since 1974.

## Legislative Action Team report

Members of the college's Legislative Action Team are paying close attention to developments in Salem and Washington D.C. as both the state and federal legislatures make budget decisions that will impact the college.

At its March 4 meeting, the group discussed the status of federal and state legislation and heard a report from President Jerry Moskus and Vice President Larry Warford who visited Washington D.C. in February as part of a 10-agency delegation seeking funding for local projects. The college and the City of Eugene are seeking additional funding for a facility at the airport to house Lane's Aviation Maintenance program. The college, the City of Springfield, and the Springfield School District are seeking funding to create a community skills center to assist dislocated workers. The center would allow the college to expand its dislocated worker services to include workers from industries other than the timber industry.

Librarian Don Ownbey reminded the group that there is a toll free number that can be used to request information about the status of state legislation. That number is: 1-800-332-2313.

The Legislative Action Team meets again on Thursday, April 4, at 7:30 a.m. in the Boardroom.

## College catalog publication date to be changed

Institutional Advancement has decided to publish the college catalog in June rather than April this year so that it will be more accurate. In the past, it was published before the final April curriculum meeting, so changes made there were not reflected in the catalog for the following year. Staff who use the catalog with students would prefer to have a more accurate catalog. Please call me if you have any questions about how this might affect you. - Susan Sutton, ext. 2593

## Event information needed for summer class schedule

We also would like to hear from you now about events, special classes, performances, etc. that will be happening at Lane this summer for the class schedule. Each summer the schedule features "What's Happening at Lane This Summer." Call or send items to me for consideration. - Susan Sutton, ext. 2593

## Money-making and money-saving ideas still sought

The Investments Opportunity Committee is still seeking money-saving or money-making proposals. Contact any committee member for an application form. Next meeting is March 10.

Virginia Brady 2565  
Susan Breeden 2214  
Ed Case 2574  
Sandy Cutler 2105  
Bert Ewing 2829

Shirlee Ford 2322  
Sandy Ing 2666  
Sandra Jones 683-8043  
John Nelson 2403  
Doug White 2617



## **Oregon Trail book sales to help fund play**

The true story of 1,000 pioneers who left the main Oregon Trail in the fall of 1853 to follow a "short cut" over the desert and into the high Cascades is the topic of a book and a play by Pete Peterson, journalism instructor at Lane.

Peterson first published the book, "Our Wagon Train is Lost," in 1975. The 60-page softbound book is spiral bound and illustrated by Jerry Williams, a professor of theater arts at the University of Oregon and director of University Theater. The LCC Foundation has reprinted it and will contribute proceeds from its sale to help finance the stage version. It goes on sale March 8 for \$8 at all LCC bookstores on main campus, downtown Eugene, Cottage Grove and Florence. It also will be available at the Lane County Historical Museum and the Springfield Museum for \$9.60.

The play, titled "That Pioneer Road," will be produced in November by Performing Arts. It will follow a reader's theater pageant style using mixed media life-size photographs. Peterson's script made the finals of the 1992 Pacific Northwest Writer's Conference competition.

## **Student success meeting invites participation**

All interested staff are invited to attend the next Student Success meeting on Monday, March 15, at 3:30 p.m. in PE 205. For information, call Evelyn Nagy at ext. 2947.

## **Your favorite things**

Institutional Advancement is compiling information about the Eugene-Springfield area for a group of visitors from across the country who will be on campus in April. Once this information is gathered, we'll have it for other groups and guests. Please tell us where you take visitors, your favorite restaurants or shops, your favorite sights or area places to visit, and your favorite local trivia, humor or lore. Send information to Angela Miller, IA, by March 12. Include your name and extension so we can contact you if we need more information. We'll publish some of the results in The Daily. Thanks!

## **Graphic Design T-shirts available**

Every year, students in the second year of LCC's Graphic Design Program produce a commemorative T-shirt. This year, for the first time ever, the public at large can order these shirts. They will be printed in black and lavender, on "natural" color shirts. The graphic design students and instructors will create exciting images, based on their names and photos, then these images will be assembled along with the slogan "Wage Art." Shirts are 100% cotton, are printed on both front and back, and are available in three styles. The T-shirts sell for \$7, tank tops for \$7 and long sleeve shirts for \$9. Shirts must be ordered and pre-paid by Friday, March 12. They will be printed over spring break and delivered early next term. Contact Babe Gay in the Art Office, ext. 2409.

## **Final diversity class this term devoted to mixed race issues**

The "Issues in Cultural Diversity" series for winter term concludes Tuesday, March 9, with "Mixed Race Issues." It will be held from 3-4:30 p.m. and again from 5:30-7 p.m. in Apprenticeship 216. A new series begins Jan. 12. For more information, call Vicki Levine at ext. 2074.

## **Fulbright information available**

Flyers are now available on the 1994-95 Fulbright Scholar Awards for Faculty and Professionals. Obtain a flyer from Julie Baker at ext. 2199 to send directly to Fulbright for an application packet.

## **Foreign student affairs conference scheduled**

The National Association of Foreign Student Affairs Region I Mid-Year Seminar in Oregon will be held March 18 at PCC Sylvania Campus. Registration fee of \$20 includes lunch and materials. For further information, contact Julie Baker, ext. 2199.

## **Survey thanks**

A special thank you to all of you who completed the Martin Luther King Day surveys! The results have been tallied, providing us with good information for next year's planning. The majority of respondents enjoyed the day's format, and especially Dr. Milton Bennett. An earlier distribution of the program was mentioned, as well as an appreciation for the fact that the program's length with individual presenter arrangements and the snow days affected this year's distribution. As you attend conferences this year and/or have ideas for sessions we could use next year, please pass that information on to me. Faculty, Management and Classified Professional Development Teams are always interested in good presenters for their respective groups. - Julie Baker, ext. 2199

---

### **- ADS -**

FOR SALE: Montgomery Ward 9-inch color TV; AC, DC, will operate on 12 volts; used only about 2 hours; perfect for an RV. Excellent condition, \$100. Call Sharon Mastin, DTC Business, ext. 2992 or 342-5217.

ENJOY READING LIGHT FICTION? The Library's ongoing used booksale is currently well-supplied! Prices as usual, \$1 dollar hardbound, 50¢ paperbound.

PART TIME FACULTY looking for additional part time work? Check out the opportunities with a Fortune 500 company. Call Jeff Taylor at home only, 344-4729. Science Dept., ext. 2446.

TSA MUTUAL FUND: Seeking other employees interested in adding new mutual fund to LCC available list. Need 9 others. Janus Fund and/or others considered. Julia Munkvold, F&HC, ext. 2636, or 688-6644.

DEADLINE for The Daily is 12-noon of the day prior to publication on Mondays, Tuesdays, Wednesdays, and Thursdays. Submissions must be made in writing. Ads must include first and last name, department, and extension. Ads will run at least once and repeated if space permits. Priority will be given to new items.



# The Daily

Edited by Joan Aschim

Published for the staff of Lane Community College

747-4501, ext. 2591

Tuesday, March 9, 1993

Week 10 of winter term

## **FIPSE grant official to meet with faculty and staff today**

Eulalia Cobb, a program officer for the Fund for the Improvement of Postsecondary Education (FIPSE), will be visiting Lane's Chemical Dependency Counselor Training Program today. She will share information about the FIPSE program in a grants forum from 3-4 p.m. in the Social Science lounge (fourth floor, Center Building). All faculty and staff interested in developing future FIPSE proposals are encouraged to attend the forum. Contact Sarah LaMaster if you have questions, ext. 2312.

## **Jerry Sirois hospitalized**

Lane employee and classified staff union president Jerry Sirois went into cardiac arrest late Friday night and is in ICU at Sacred Heart Hospital. He will undergo surgery this morning to have a heart valve replaced. Please, no visitors or phone calls at this time. Cards may be sent to the hospital. The Daily will try to keep you updated.

## **Instructional support staff to meet**

Instructional support staff will meet Wednesday, March 11, from 3-4 p.m. in Electronics 206. For more information contact Pam McClelland at ext. 2459.

## **Instructional Cabinet meeting postponed**

Instructional Cabinet will not meet on March 10 as previously planned.

## **Secretaries teleconference to be held**

Attention secretaries: Mark your calendars for this year's Sixth Annual American Management Association Secretaries Teleconference. Evelynne Thompson, president of Professional Secretaries International, will be joined by Dr. Natasha Josefowitz, internationally known speaker and management consultant, and author of "Paths to Power." This conference will be held on Wednesday, April 21, from 9:30 a.m. to 12-noon in the Board Room. Contact Cynde Leathers by April 14 at ext. 2260 to reserve your spot now.

## **Call for proposals**

The League for Innovation in the Community College invites proposals for presentations at its 1993 annual conference, "Reinventing the Community College." Proposals should address applications of information technology pertinent to the mission and purposes of two-year colleges. In particular, proposals are encouraged on the use of information technology to reinvent the modern, comprehensive community college in light of new economic realities and the demands of an emerging, information-based global economy. Proposals are requested to describe successful practices and programs, to demonstrate real-time applications of technology, to lead roundtable discussions on key issues facing community colleges, and to demonstrate faculty-developed instructional software. To obtain further information, contact Marianne Kimball, ext. 2306.

## **AAWCC seeks local board members**

Throw your hat in the ring now! The Lane chapter of the American Association of Women in Community Colleges is looking for a few good women to run for board vacancies for the 1993-94 school year. Offices open are vice-president for communications, vice-president for special projects, vice-president for professional development, vice-president for finance, and member-at-large. Job sharing is encouraged. Send your self-nomination to Velma Jesser in Business. If you'd like more information on the job descriptions, call Jesser, AAWCC chapter president, at ext. 2018, or Lynne Swift, president-elect, at ext. 2503. Deadline for nominations is April 30.

## **Intramurals office to host a ski trip**

All staff and students are invited to participate in a full day's skiing at Willamette Pass on Thursday, March 18. Free transport is provided and reduced lift tickets will be available. For further information and/or to sign up, please contact Maryanne Graham or Gary Knapp in the intramurals office, PE 204, ext. 2293.

## **Thanks from mathematics staff**

Members of the Mathematics Department thank those working in Purchasing for their attention to the best possible purchases. Recently we were enabled to purchase an extra printer with fixed allotted funding, because the prices of other pieces of equipment had been known to decrease. Thanks for your alertness and research for the best possible buys.



### Raffle tickets available

Campus Ministry is raffling off a quilt rack and an afghan. Tickets are \$1 each or \$5 for six tickets. The prizes are on display in the main campus Bookstore.

### That's a lot of stamps

Campus Ministry would like to thank all of those wonderful folks who gathered stamps for us last year. We collected 28,000 stamps. If you would like to send us your canceled stamps all you have to do is clip or tear off the corner of the envelope. Please leave at least a half-inch around the edge of the stamp. We will accept the whole envelope. Again, thanks-a-twenty-eight-thousand. - Jim Dieringer

### Mass scheduled

Mass will be held in PE 231 during Lent except today, March 9, when it will be held in PE 214, at 12-noon in both locations. - Jim Dieringer

### National Public Radio education series begins tonight

KLCC/KLCO will air National Public Radio's series, "Wingspread: Contemporary Issues in Education," for six consecutive Tuesdays at 6:30 p.m. beginning tonight. The series was produced at the Johnson Foundation's Wingspread Conference Center in Racine, Wisc. Tonight's program is titled, "Performance Assessment--The Future of School Reform." The principal speaker will be Ruth Mitchell, associate director of the Council for Basic Education. The program will last about an hour. Upcoming topics:

- March 16 - Essential Skills for Effective Site-Based Management
- March 23 - School Reform and the Promise of Outcome-Based Measure
- March 30 - Collaboration Between Educational and Social Service Systems
- April 6 - It Can Be Done: Models for Collaboration.
- April 13 - The Fascination of What's Difficult: Overcoming the Barriers to Collaboration

### Diversity series announces spring seminars

"Issues in Cultural Diversity" returns spring term with nine seminars. For registration information, This seminar series explores the issues of cultural diversity within American society. Two one-credit sections are offered on Tuesdays from 3-4:30 p.m. and 5:30-7 p.m. in Apprenticeship 216. In addition, a discussion group will meet Thursdays from 3-4:30 p.m. for those who wish to register for an additional three credits. For more information, see page 55 of the spring class schedule under the human development listings or call Vicki Levine at ext. 2074. The spring seminars are:

- Sojourner Truth Theater/Afro-American History, April 6
- Jewish Mystical Rituals for Healing the World, April 13
- Issues of Class in Eugene-Springfield, April 20
- Native American Issues, April 27
- Race: Biological Definition or Social Construction, May 4
- Multi-Cultural Education, May 11
- Diversity and the Media, May 18
- Lesbian and Gay Issues, May 25
- Chicano History, June 1

### Faculty professional development leave applications due

Faculty interested in applying for professional development leave during 1993/94 should submit applications by April 15 to Study Skills. Contracted faculty members may apply for up to three terms of paid professional leave to do research, retrain for new assignments at Lane, or return to school. Guidelines/applications are available from Roxanne Flowerday or Pat John in Study Skills at ext. 2439.

### Safety reminder

The college Safety Committee meets regularly to evaluate the college's policies and procedures which affect safety and health in our workplace. The committee makes written recommendations for changes; reviews safety suggestions and reports of hazards directly from staff; and conducts workplace inspections to locate, identify and document safety and health hazards on a quarterly basis. The members of the committee encourage employees to contact them directly with concerns or other information that will help create a hazard-free work environment. The members of the committee are:

- |                              |                                     |
|------------------------------|-------------------------------------|
| Ed Case, ext. 2574           | Eilene LePelley, exts. 2930 or 2251 |
| Paul Colvin, ext. 2216       | Debbie Powers, ext. 2120            |
| Don Hein, exts. 2190 or 2224 | John Shirey, exts. 2248 or 2826     |
| Sandy Ing, ext. 2666         | Tom Wayne, exts. 2447 or 2446       |

---

#### - ADS -

STILL SKIING? For sale: Two women's ski bibs with matching jackets for a small woman. Come by the Dental Clinic, Health 273, and see! Kathy Bates, F&HC, ext. 2206.

FOR SALE: Montgomery Ward 9-inch color TV; AC, DC, will operate on 12 volts; used only about 2 hours; perfect for an RV. Excellent condition, \$100. Call Sharon Mastin, DTC Business, ext. 2992 or 342-5217.

ENJOY READING LIGHT FICTION? The Library's ongoing used booksale is currently well-supplied! Prices as usual, \$1 dollar hardbound, 50¢ paperbound.

DEADLINE for The Daily is 12-noon of the day prior to publication on Mondays, Tuesdays, Wednesdays, and Thursdays. Submissions must be made in writing. Ads must include first and last name, department, and extension. Ads will run at least once and repeated if space permits. Priority will be given to new items.



# The Daily

Edited by Joan Aschim

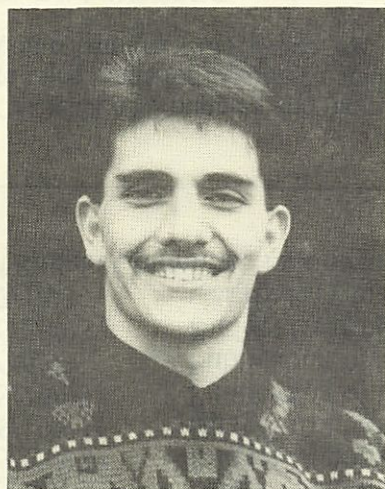
Published for the staff of Lane Community College

747-4501, ext. 2591

Wednesday, March 10, 1993

Week 10 of winter term

## Student scholar to dine with the governor



*JB Galan*

Jorge "JB" Galan has been named an Oregon Community College Student Scholar. He will travel to Salem with President Jerry Moskus on Friday, March 19, for a recognition luncheon with scholars from the state's other community colleges. The all-state scholar recognition program was founded by Dale Parnell, former Oregon community college commissioner and first president of Lane.

Galan is a 19-year-old transfer degree student with a cumulative grade point average of 3.90. When not in class, he serves students as an Associated Students of Lane Community College senator.

His selection to represent Lane on the state scholars team was the unanimous verdict of the selection committee. "JB has received high praise from faculty, staff and peers for his hard work and good nature," said selection committee member Barb Delansky. Galan is planning to go to Stanford to complete his undergraduate degree and then pursue a Ph.D. in psychology.

In his application he stated: "When I graduated from high school, I knew I would like to continue my education. At that time, however, I had some difficulty deciding what my next step in doing so should be.

I had not yet decided what I would like to study, I was unsure of my abilities at the college level, and as a student with a disability, I needed to consider campus accessibility." For these reasons, he chose to come to Lane. "I am very happy to say that I believe that my attending Lane has answered many of my questions concerning the future and has prepared me to continue at a four-year university."

Finalists for the honor were Maria Uquillas, Kathy Heiser, Darla Roberts and Candace Brambora. Nominees and their faculty sponsors lunched with President Moskus and Vice President Linda Fossen in February.

## Classified Council report

Classified Council meets today from 3-5 p.m. in PE 205.

At its Feb. 24 meeting, council discussed employee evaluations after hearing guest Bruce Siggson report Faculty Council's discussion on student evaluations of instructors. Classified Council agreed that all employee groups should have some form of evaluation.

Council also agreed to support Faculty Council's efforts to ensure that historical data regarding department faculty ratios are generated and to support its goal to maintain a strong majority of full-time faculty.

Classified Council meetings are open to all as an information exchange and as a forum for discussion of issues of concern to classified employees. The next meeting will be held April 14.

## Degree committee to meet

The Degree Requirement Review Committee will meet on Thursday, March 11, at 3:30 p.m. in Center 468 (English, Foreign Language and Speech conference room, fourth floor Center Building). The agenda will include consideration of adding a three-hour ethnic cultural and gender diversity requirement to the Oregon Transfer Degree. Visitors are welcome.

## Faculty Council agenda

Faculty Council will meet Thursday, March 11, from 3-4:30 p.m. in the Board Room. Council will hear about the emergency fund bank from Julie Baker, an affirmative action update from Donna Albro, and a progress report from its student evaluation group representative Beth Naylor.

## Education reform explained

The League of Women Voters of Oregon has published a booklet titled, 'Education Reform in Oregon: A Blueprint for the 21st Century.' The report focuses on "the 10 Oregon Department of Education Task Forces charged to make recommendations to implement the Educational Act for the 21st Century (HB 3565)," according to the foreword. If you'd like a copy of the 17-page publication, contact the League of Women Voters of Oregon, Education Fund, 2659 Commercial St. SE #220, Salem Oregon 97302, or call 581-5722.

## Health care provider directory distributed

The Blue Cross/Blue Shield of Oregon preferred provider directory published in February 1993 has been distributed through intercampus mail to staff with Blue Cross/Blue Shield medical insurance. Please destroy all out-dated copies. If you did not receive the new directory, call Marie Nelson in Personnel Services at ext. 2590.



## Bird identification course offered

Continuing Education announces "Bird Identification" with Dennis Arendt on Saturdays from 8-11 a.m. beginning April 3 in Apprenticeship 221. This course is for the novice and will teach identification of common birds and include full-day field trips to the coast and Finley Wildlife Refuge. The registration number is 5578. Cost is \$41 plus the \$2 per term registration fee. This course is *not* listed in the spring class schedule.

## Budget Committee update

The LCC Budget Committee met March 2 for a general orientation. The 14-member group learned about the college budget development process, the Oregon budget development process, the budget structure, and the work they have cut out for them. They will conduct subcommittee meetings from March 22 through April 9. Serving on the committee are the seven members of the LCC Board of Education and their appointees.

### 1993-94 Budget Committee

<u>Zone</u>	<u>Board Member</u>	<u>Budget Committee Appointee</u>
Zone 1	Chuck Ivey	Patricia Rosewood
Zone 2	James B. Pitney	John Hamilton
Zone 3	Pat G. Riggs	Cj Mann
Zone 4	Cindy Weeldreyer	Michael Dubick
Zone 5	Peter Sorenson	Martin Lewis
At Large	Roger Hall	Sally Weston
At Large	Larry Mann	Mark Ringsdorf

### 1993-94 Budget Subcommittee Teams

#### Administrative Services

Martin Lewis  
Larry Mann  
Mark Ringsdorf  
Staff: Carol Beckley

#### Community & Economic Development

Michael Dubick  
Chuck Ivey  
Peter Sorenson  
Staff: Larry Warford

#### Instruction

Cj Mann  
James B. Pitney  
Cindy Weeldreyer  
Staff: Jim Ellison

#### President's Office

Pat G. Riggs  
Sally Weston  
Staff: Marie Matsen  
Staff: Linda Fossen

#### Student Services

John Hamilton  
Roger Hall  
Patricia Rosewood

### Remaining budget calendar

3/1/93	Branch Project Budget Requests to Budget Review Group
3/15/93	Budget Review Group's funding recommendations to President
3/19/93	Final decision on Project Budget Requests to be funded (President)
	Approved Project Budget Requests to Budget Analyst
3/22-4/9/93*	Budget Sub-committee Meetings
4/12/93	Final budget adjustments to Budget Analyst
4/25/93	Publication of notice of Budget Committee Meeting
5/5/93*	Budget Committee Meeting and presentation of Budget Document
5/12/93*	Budget Committee Meeting
5/19/93*	Budget Committee Meeting
5/29/93	Publication of budget summaries and first notice of Budget Hearing
6/5/93	Publication of second notice of Budget Hearing
6/16/93	Budget Hearing; Board appropriates and levies taxes
7/1/93	Certify levy to County Assessor

\*Budget Committee involvement.

---

### - ADS -

CHOCOLATE bunnies and more for sale (ends 3/15) to raise funds for daughter's softball team uniforms. Laura Tamura, Pres. Office, ext. 2301.

THE BOOKSTORE now has class attendance and record books for \$3.20.

FOR SALE: 1983 Toyota Corolla Deluxe 4-door sedan, needs some body work. Mechanically sound. \$1,250. Call Betty Hunt, 747-1361, or ext. 2246, Computer Services.

STILL SKIING? For sale: Two women's ski bibs with matching jackets for a small woman. Come by the Dental Clinic, Health 273, and see! Kathy Bates, F&HC, ext. 2206.

FOR SALE: Montgomery Ward 9-inch color TV; AC, DC, will operate on 12 volts; used only about 2 hours; perfect for an RV. Excellent condition, \$100. Call Sharon Mastin, DTC Business, ext. 2992 or 342-5217.

ENJOY READING LIGHT FICTION? The Library's ongoing used booksale is currently well-supplied! Prices as usual, \$1 dollar hardbound, 50¢ paperbound.

DEADLINE for The Daily is 12-noon of the day prior to publication on Mondays, Tuesdays, Wednesdays, and Thursdays. Submissions must be made in writing. Ads must include first and last name, department, and extension. Ads will run at least once and repeated if space permits. Priority will be given to new items.



# The Daily

Edited by Joan Aschim

Published for the staff of Lane Community College

747-4501, ext. 2591

Thursday, March 11, 1993

Week 10 of winter term

## Board, council and branch meetings

- Administrative Services managers, Tuesday, March 16, 8:30-10 a.m., PE 205. For details call ext. 2311.
- Board of Education, Wednesday, April 14, 7:30 p.m., Board Room. For details call ext. 2202.
- CED Cabinet, Monday, March 15, 1:30-3:30 p.m., Board Room. For details call ext. 2302.
- Classified Council, Wednesday, April 14, 3-5 p.m., PE 205. For details call Gloria Jarvis, ext. 2604.
- College Council, Tuesday, March 30, 3-5 p.m., PE 205. For information call ext. 2313.
- Faculty Council, today, 3-4:30 p.m., Board Room. For information call David Sherman, ext. 2143.
- Instructional Cabinet, Wednesday, March 17, 1:30-3 p.m., Board Room. For details call ext. 2306.
- Managers' Forum, Friday, March 12, 8:30 a.m., Forum 309. For details call Marie Matsen, ext. 2313.
- Student Services directors, Wednesday, March 17, 9-10:30 a.m., Admin. 206. For information call ext. 2315.

## Faculty Council Report

Faculty Council meets today from 3-4:30 p.m. in the Board Room.

At the Feb. 25. meeting, Judith Gabriel gave council an overview of HB 3565, the Oregon Educational Act for the 21st Century. Council raised questions about funding and implementation of the bill and discussed its effect on teaching at the community college level. Debate centered on the necessity of compelling students to focus on a particular vocation. Some members expressed concern that the bill seemed to deny students a general or liberal arts education. Others felt it was important that applied skills be taught to enhance employability.

In other business, council discussed methods for administering and tallying student instructor and class evaluations. Jill McKenney reported that the Level Change Committee is working to clarify point requirements, and she recommended that accurate records be kept by anyone intending to apply for a level change. - submitted by Kimberly Buchanan for The Daily

## Ensure proper credit for tuition waivers

To ensure proper credit for tuition waivers, employees must present the white copy of the waiver form to Financial Services after it's signed by employee, supervisor and Personnel, and after registering on ClassLine. To ensure credit for courtesy appointments, volunteers must present the pink copy to Financial Services after it's signed by the volunteer, supervisor, vice president, and Personnel, and after registering on ClassLine. Both tuition waivers and courtesy appointments cover tuition only. Employees and volunteers are responsible for the registration fee, any class fees, and any finance or late charges if the payment and/or waiver are late in coming to Financial Services. Refer questions to Financial Services at ext. 2210.

## "Women's Healing Weekend" rescheduled

Spaces are still available in the "Women's Healing Weekend" to be held at Heceta House from 8 p.m. on Friday, March 26 to 2 p.m. on Sunday, March 28. The weekend originally was planned for February 19-21 but rescheduled due to bad weather. The weekend will be a sampler of stress reduction techniques and healing arts including yoga, meditation, relaxation, massage, group interaction and laughter. Cost is \$35 tuition plus \$25 fee; Continuing Education registration number 5353. For more information, contact instructor Shan Titus, ext. 2688, 683-1873.

## Call for proposals

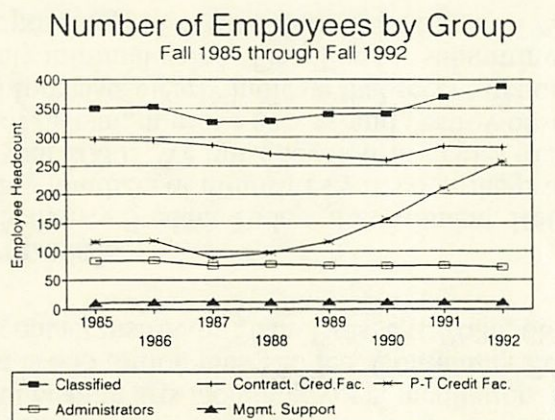
"The Minority Student Today: Recruitment, Retention, and Success," Oct. 10-13, San Antonio, Texas. Growing numbers of minorities will enter the professional workforce, comprising almost two-thirds by the year 2000. We must develop strategies to abolish societal apathy, eliminate both overt and subtle forms of racism, improve access, and destroy obstacles to success for the minority student today. Research and forecasts clearly indicate that recent trends in minority participation in higher education have made only minimal gains. Deadline for submitting a proposal is June 15, 1993. For a list of suggested proposal topics, contact Julie Baker, ext. 2199.

## Bird identification course correction

The correct registration number for "Bird Identification" with Dennis Arendt is 5579, not 5578 as previously published. The course is offered by Continuing Education on Saturdays from 8-11 a.m. beginning April 3 in Apprenticeship 221. Cost is \$41 plus the \$2 per term registration fee. This course is *not* listed in the spring class schedule.



# KEY BENCHMARKS LANE COMMUNITY COLLEGE Change in Employee Headcount by Group



- ☑ During this period, student FTE grew by an estimated 17%. The number of scheduled classified staff grew by 11%.
- ☑ The number of all credit faculty increased by 31%. However, contracted faculty decreased by 5% while part-time faculty increased by 120%.
- ☑ The total number of managers decreased by 11%. Management support staff increased slightly while the number of administrators decreased.

SOURCE: Personnel Services  
Research, Planning & Evaluation  
February 20, 1993

## Sirois update

Heart valve replacement surgery for Jerry Sirois on Tuesday was successful. He is still in intensive care at Sacred Heart and cannot receive visitors or phone calls yet.

## Tacky Tie contest accepting entries

Campus Ministry's "Second Annual LCC Unisex Tacky Tie Classic" will be held Thursday, April 1, at 12:15 p.m. in the main campus cafeteria. A donation of \$5 for each official entry will be cheerfully accepted to benefit the ministry. There will be a grand prize trophy plus other prizes for best coordinated outfit, and novelty and/or worst original creation. For complete contest rules, contact Marna Crawford at ext. 2814 or Anne Bacon at ext. 2436.

## Robin and Linda Williams tickets available

Robin and Linda Williams of "A Prairie Home Companion" fame will bring their notable harmonies and enduring story-songs to Eugene for a benefit performance for KLCC. The show will be held on Wednesday, March 24,

at 8 p.m., at the LCC Performing Arts Main Theater.

Tickets are \$7 in advance and \$9 the day of the show. Tickets can be purchased from KLCC and LCC Performing Arts box office. Tickets can also be charged by phone through the KLCC main office. For more information, call ext. 2224.

## - ADS -

FOR SALE: 1982 VW Rabbit. Very reliable, gets great gas mileage, new tires, new front brakes, and much more! \$1,600. Call Melanie Martin, Health and P.E., 683-8435.

FOR SALE; Available after today: 19" Hitachi color TV, cable ready, 10 years old, great shape, \$50; available end of March: computer system, 286 40MB with mouse, monitor, keyboard, software, \$350; available after Easter (when new car comes): '81 Accord, 4-door, auto, a/c, Yakima rack, 105,000 miles, great shape, \$2,000. Prices firmly negotiable. Call Ron or Karol Rourke, SES, exts. 2100 and 2103.

FOR RENT: Large, clean, newly redecorated one-bedroom apartment in triplex with covered parking and storage. Water, garbage and sewer paid. No pets. \$325/month + \$275 deposit. 211 24th St. (corner of North "A" St.) in Springfield. Call Doris Sinclair at ext. 2907 in Cont. Ed. or 746-5927 or 344-7905.

THREE-QUARTER SIZE VIOLIN FOR SALE. Handmade by Andy Kim of Portland in 1987. Complete with like-new case, bow, rosin, cleaning cloth, shoulder pad, and chin rest. All for only \$300. Invest--don't rent! Call Greg Fishwick, Counseling, ext. 2321.

CHOCOLATE bunnies and more for sale (ends 3/15) to raise funds for daughter's softball team uniforms. Laura Tamura, Pres. Office, ext. 2301.

THE BOOKSTORE now has class attendance and record books for \$3.20.

FOR SALE: 1983 Toyota Corolla Deluxe 4-door sedan, needs some body work. Mechanically sound. \$1,250. Call Betty Hunt, 747-1361, or ext. 2246, Computer Services.

STILL SKIING? For sale: Two women's ski bibs with matching jackets for a small woman. Come by the Dental Clinic, Health 273, and see! Kathy Bates, F&HC, ext. 2206.

FOR SALE: Montgomery Ward 9-inch color TV; AC, DC, will operate on 12 volts; used only about 2 hours; perfect for an RV. Excellent condition, \$100. Call Sharon Mastin, DTC Business, ext. 2992 or 342-5217.

ENJOY READING LIGHT FICTION? The Library's ongoing used booksale is currently well-supplied! Prices as usual, \$1 dollar hardbound, 50¢ paperbound.

PART TIME FACULTY looking for additional part time work? Check out the opportunities with a Fortune 500 company. Call Jeff Taylor at home only, 344-4729. Science Dept., ext. 2446.

TSA MUTUAL FUND: Seeking other employees interested in adding new mutual fund to LCC available list. Need 9 others. Janus Fund and/or others considered. Julia Munkvold, F&HC, ext. 2636, or 688-6644.

DEADLINE for The Daily is 12-noon of the day prior to publication on Mondays, Tuesdays, Wednesdays, and Thursdays. Submissions must be made in writing.



# The Daily

Edited by Joan Aschim

Published for the staff of Lane Community College

747-4501, ext. 2591

Monday, March 15, 1993

Winter term finals week

## Staff events feature Oregon Trail and Oregon coast

The Classified Professional Development Team and LCCEF are sponsoring the following events for the whole college:

### ◆ That Pioneer Road: A Celebration - Thursday April 22

A scrumptious authentic Oregon Trail dinner prepared for your dining pleasure with a preview of Pete Peterson's theatrical production celebrating Lane County's own lost wagon train.

6:00 p.m. - No Host Social Hour  
6:30 p.m. - Dinner Served (NE Cafeteria)  
7:45 p.m. - "That Pioneer Road" Reading  
Cost \$10-\$15 depending on market food prices

### ◆ An Oregon Coast Adventure - Saturday, May 1

A motor coach trek to the beautiful Oregon Coast. The bus will load and depart from LCC main campus traveling to LCC at Florence, Cape Perpetua, Newport, Depoe Bay and Lincoln City.

8:00 a.m. - Depart LCC Eugene  
9:30 a.m. - LCC at Florence  
11:30 a.m. - Oregon Coast Aquarium at Newport  
3:00 p.m. - Lincoln City - Kite Festival and Outlet Shops  
8:30 p.m. - Return to LCC  
Cost \$15.00 for bus; \$6.30 for aquarium (optional)

Contact Alen Bahret, Computer Services, ext. 2247 or Julie Baker, Community and Economic Development, ext. 2199, for more information and reservations.

## Network communications to be demonstrated

Main system software that will allow E-Mail users to access FAX and internal networks such as Internet and Bitnet will be demonstrated on Thursday, March 1, 1:30-2:30 p.m., in Business 114. Please call Shirley Baldwin at ext. 2245 if you wish to attend.

## Classified Professional Development Team to meet

The Classified Professional Development Team will meet Tuesday, March 16, from 2-3 p.m. in the Board Room. - Julie Baker, ext. 2199

## Shirley Perry recovering

Shirley Perry, an employment specialist in the Job Placement Office, returned home March 11 after five days in the hospital with a broken leg and surgery. You may send cards to her at 2215 Arthur Court in Eugene, 97405.

## Instructor Brenda Smith published

Brenda Smith, clinical instructor in the dental hygiene program, published an article in the February issues of "Access" magazine, a journal for dental hygienists. The article is titled, "Home from the Office with Aches and Pains?" and offers helpful ways to deal with "musculoskeletal disorders that affect the oral healthcare professions."

## Retrained timber workers to hold back-to-work rally

The Dislocated Worker Program will host a "Back to Work" rally for 400 graduating participants on Wednesday, April 7, from 4-6 p.m. in Forum 308-309. The retrained timber workers will hear a panel of local employers describe their businesses and answer questions about hiring practices. Panelists scheduled so far are representatives from area businesses Point Control Co., a software company, Valhall, Inc., a panelized housing manufacturer, and Jones & Roth, an accounting firm. Live music will be provided by Glen Jones and Southbound, a self-formed group of program participants.

Dislocated Worker Program employment specialist Toby Finkelstein says, "We're rallying students and businesses in the effort of finding jobs for these 400 students. We're starting now, rather than waiting until June, to prepare and assist our participants. We hope that with a head start we'll be successful in placing these people."

The Dislocated Worker Program is operated by LCC in partnership with the Southern Willamette Private Industry Council and the Oregon Employment Division. About 90 percent of program participants enroll for retraining at Lane. The remainder enroll in other public colleges or private vocational schools.



## March declared Purchasing Month

Gov. Barbara Roberts issued a proclamation on Feb. 10 declaring March as Purchasing Month. The proclamation intends to recognize the purchasing profession as playing "a significant role in the quality, efficiency and profitability of business and government." The governor noted that purchasing services include not only acquisitions but contract management, forecasting, inventory, and other services. The profession has "tremendous influence on the economic conditions" she wrote.

## Purchasing earns thanks

Part-time industrial technology instructor Perry McGill recently sent a letter of thanks to Purchasing Services. McGill needed headphones and other items to set up individualized "viewing booths" for his students. He likes students to be able to work at their own pace and needed the booth to separate activities that could be disruptive to others. "Thanks to your department, I am well on my way to a solution," he wrote.

## Telecourse to feature Joseph Campbell's work

This spring, Lane will offer 13 telecourses for college credit. Telecourses are attractive options for college study--offering a practical alternative to attending class on campus.

Included in this term's offerings is "Joseph Campbell: Transformations of Myth Through Time." This course consists of 10 hour-long programs selected from over 50 hours of Joseph Campbell lectures. Joseph Campbell, as author, as teacher, as storyteller, is an inspiration to people of all walks of life the world over.

All telecourses have a required orientation session. Orientations will be held the week of March 29. Telecourses are broadcast on a number of different channels, including cable and Oregon Public Broadcasting KOAC channel 7 and KEPB channel 28. All telecourses will begin being broadcast the week of March 29. Videotapes of all the telecourses are also available for viewing in the library on main campus. For more information, see page 73 of the spring class schedule. Telecourses are coordinated by Cynde Leathers.

## Korea is the focus for "International Week" spring term

Mark your calendars for Korean Week, May 10-14. Sponsored by the International/Intercultural Committee, the week will include brown bag discussions on educational issues, Korean economy, politics, cultural information and slide show. The week will culminate with the International Students' dinner and performance Friday, May 14. Watch The Daily for more information.

If you have Korean artifacts you are willing to display in the library during Korean week, please contact Julie Baker, ext. 2199.

## Ensure proper credit for tuition waivers

To ensure proper credit for tuition waivers, employees must present the white copy of the waiver form to Financial Services after it's signed by employee, supervisor and Personnel, and after registering on ClassLine. To ensure credit for courtesy appointments, volunteers must present the pink copy to Financial Services after it's signed by the volunteer, supervisor, vice president, and Personnel, and after registering on ClassLine. Both tuition waivers and courtesy appointments cover tuition only. Employees and volunteers are responsible for the registration fee, any class fees, and any finance or late charges if the payment and/or waiver are late in coming to Financial Services. Refer questions to Financial Services at ext. 2210.

---

### - ADS -

FOR SALE: Hardtop or instant roadster (convertible) 75 Porsche 914, large engine, 2 liter. Recently rebuilt engine, clutch, transmission and brakes by Carrera Autowerks. Sticky tires, Blaupunkt radio-tape, good condition, \$3,000. Art Tegger, E, FL&S, ext. 2147, or 687-9013.

FOR SALE: Montgomery Ward VCR works great but not cable ready, \$100 OBO; 8mm movie camera and projector, 1956 vintage, \$90 for both OBO; men's Citizen's watch, brand new, never worn, originally \$279.95, will sell for \$150 OBO. Call Sally Wilson, ext. 2428, Social Science, or 683-5203 evenings.

FOR SALE: 1982 VW Rabbit. Very reliable, gets great gas mileage, new tires, new front brakes, and much more! \$1,600. Call Melanie Martin, Health and P.E., 683-8435.

FOR SALE: 19" Hitachi color TV, cable ready, 10 years old, great shape, \$50; available end of March: computer system, 286 40MB with mouse, monitor, keyboard, software, \$350; available after Easter (when new car comes): '81 Accord, 4-door, auto, a/c, Yakima rack, 105,000 miles, great shape, \$2,000. Prices firmly negotiable. Call Ron or Karol Rourke, SES, exts. 2100 and 2103.

FOR RENT: Large, clean, newly redecorated one-bedroom apartment in triplex with covered parking and storage. Water, garbage and sewer paid. No pets. \$325/month + \$275 deposit. 211 24th St. (corner of North "A" St.) in Springfield. Call Doris Sinclair at ext. 2907 in Cont. Ed. or 746-5927 or 344-7905.

THREE-QUARTER SIZE VIOLIN FOR SALE. Handmade by Andy Kim of Portland in 1987. Complete with like-new case, bow, rosin, cleaning cloth, shoulder pad, and chin rest. All for only \$300. Invest--don't rent! Call Greg Fishwick, Counseling, ext. 2321.

CHOCOLATE bunnies and more for sale (ends 3/15) to raise funds for daughter's softball team uniforms. Laura Tamura, Pres. Office, ext. 2301.

THE BOOKSTORE now has class attendance and record books for \$3.20.

FOR SALE: 1983 Toyota Corolla Deluxe 4-door sedan, needs some body work. Mechanically sound. \$1,250. Call Betty Hunt, 747-1361, or ext. 2246, Computer Services.

DEADLINE for The Daily is 12-noon of the day prior to publication on Mondays, Tuesdays, Wednesdays, and Thursdays. Submissions must be made in writing.



# The Daily

Edited by Joan Aschim

Published for the staff of Lane Community College

747-4501, ext. 2591

Tuesday, March 16, 1993

Winter term finals week

## Daily schedule differs during spring break

The Daily will publish one day only during spring break, on Tuesday, March 23. The deadline for submissions will be 12-noon on Monday, March 22. The Monday through Thursday schedule will resume March 29.

## Corrections

Main system software that will allow E-Mail users to access fax and external (not internal) networks such as Internet and Bitnet will be demonstrated on Thursday, March 18, (not March 1) from 1:30-2:30 p.m., in Business 114. Please call Shirley Baldwin at ext. 2245 if you wish to attend.

## National Public Radio education series continues tonight

KLCC/KLCO is airing National Public Radio's series, "Wingspread: Contemporary Issues in Education" on Tuesdays at 6:30 p.m. through mid-April. The series was produced at the Johnson Foundation's Wingspread Conference Center in Racine, Wisc.

Tonight's program is titled, "Essential Skills for Effective Site-Based Management." The principal speaker will be Gary Phillips, executive director of National School Improvements, Inc. He will discuss essential skills for assuring effective site-based management of schools with an emphasis on what happens in the classroom. The program will last about an hour. Upcoming topics:

- March 23 - School Reform and the Promise of Outcome-Based Measure
- March 30 - Collaboration Between Educational and Social Service Systems
- April 6 - It Can Be Done: Models for Collaboration.
- April 13 - The Fascination of What's Difficult: Overcoming the Barriers to Collaboration

## Helping hands again needed

Last fall, LCC employees reached out and showed they cared by contributing to a fund to pay Nancy Jaques' insurance premiums while she was on disability leave. Since that time, I have been gathering information and addressing groups trying to find a way to help employees in the situation of paying their own insurance premiums from two-thirds of their regular pay. Another employee now needs our help.

Corinne Meehan of Performing Arts first missed work January 18 with back problems. She had back surgery February 13 for a ruptured disk. Corinne has had hip problems, and this aggravated her back. Now she is looking forward to a hip replacement surgery on April 13. She will be off work at least another three months. If you are able to help, please send your contribution to me and I will deposit in the special insurance fund established for Corinne. Every dollar helps. Please reach out and show you care. Thanks! - Julie Baker, ext. 2199

## Who is your life insurance beneficiary?

All eligible staff should be sure that the beneficiary of their life insurance is correct and current. If you would like to change your beneficiary, complete a request for beneficiary change form in the Personnel office. If you have any questions, contact Marie Nelson at ext. 2590.

## Annual employee reception scheduled

The annual reception for 10-year, 20-year, 25-year and retiring employees has been changed from May 20 to Thursday, May 13, 3-5 p.m.

## Resource Development Group to meet

The Resource Development Group will meet this Thursday, March 18, from 2-3:30 p.m. in Health 209. Agenda items include follow-up from the last meeting and discussion of indirect costs recovery and use of residual funds. - Sarah LaMaster, ext. 2312

## Intramurals ski trip is Thursday

The Intramurals office is hosting a full day's skiing at Willamette Pass on Thursday, March 18, for staff and students. Free transport will be provided and reduced lift tickets will be available. To sign up, please contact Maryanne Graham or Gary Knapp at ext. 2293.

## Sirois update

Jerry Sirois was released from the hospital on Monday after undergoing successful heart valve replacement surgery the week before. He's at home and is expected to be recuperating for four to six weeks. Cards may be sent to him at 859 Northridge, Springfield 97477. Concerns and questions about classified union matters should be directed to LCCEF Acting President Alen Bahret in Computer Services at ext. 2247.



## Faculty professional development leave applications due

Faculty interested in applying for professional development leave during 1993/94 should submit applications by April 15 to Study Skills. Contracted faculty members may apply for up to three terms of paid professional leave to do research, retrain for new assignments at Lane, or return to school. Guidelines/applications are available from Roxanne Flowerday or Pat John in Study Skills at ext. 2439.

## Purchasing staff produce statewide newsletter

LCC's purchasing staff launched its first issue of "Purchasing Quarterly" in January. The newsletter goes to community college purchasing personnel statewide. It offers information about surplus property, warehousing, bidding, contract awards and other purchasing news. Purchasing Director Lloyd Rain says a conversation with President Jerry Moskus about the need for purchasing information eventually led to the newsletter idea. It came in good time for "March is Purchasing Month" in Oregon. For more information call ext. 2208.

## Outdoor track and field

The Titans outdoor track and field teams will compete in their Eugene-area event on Saturday, March 20, the Oregon Invitational, at the U of O, time to be announced. Head coach is Brad Joens. For details, call Athletics at ext. 2215.

## Association helps community college women

Did you know that the American Association of Women in Community Colleges was founded in 1973 by women from Arizona, California, Oregon and Washington who attended a seminar called "Woman: Her Challenge to the Community College," in San Francisco? Did you know that this organization has grown to over 2,500 members nationwide? Or that it represents its members by promoting issues/agenda of community college women nationally through teleconferences, journals and presentations at Association of Community College Trustees and American Association of Community Colleges meetings? Did you know that to be an officer in Lane's chapter of AAWCC you must be a member of the national organization as well? Did you know you can join this group of dynamic women who make a difference for all community college constituents for only \$15 to \$40 a year, depending on your income? Contact Julie Baker, ext. 2199 for further information.

## Sign up now for secretaries teleconference

Attention secretaries: Mark your calendars for this year's Sixth Annual American Management Association Secretaries Teleconference. Evelynne Thompson, president of Professional Secretaries International, will be joined by Dr. Natasha Josefowitz, internationally known speaker and management consultant, and author of "Paths to Power." This conference will be held on Wednesday, April 21, from 9:30 a.m. to 12-noon in the Board Room. Contact Cynde Leathers by April 14 at ext. 2260 to reserve your spot now.

## Career Fair '93 less than a month away

*"Good job! Looking forward to returning next year!"* - Lane Transit District, Career Fair '92

Career Fair '93 will be held Wednesday, April 14, from 10 a.m. to 2 p.m. on main campus. Employers will share information about their businesses and career opportunities for students, graduates and the public.

For more information, call the Job Placement Office at ext. 2326.

---

### - ADS -

FOR SALE: Hardtop or instant roadster (convertible) 75 Porsche 914, large engine, 2 liter. Recently rebuilt engine, clutch, transmission and brakes by Carrera Autowerks. Sticky tires, Blaupunkt radio-tape, good condition, \$3,000. Art Tegger, E,FL&S, ext. 2147, or 687-9013.

FOR SALE: Montgomery Ward VCR works great but not cable ready, \$100 OBO; 8mm movie camera and projector, 1956 vintage, \$90 for both OBO; men's Citizen's watch, brand new, never worn, originally \$279.95, will sell for \$150 OBO. Call Sally Wilson, ext. 2428, Social Science, or 683-5203 evenings.

FOR SALE: 1982 VW Rabbit. Very reliable, gets great gas mileage, new tires, new front brakes, and much more! \$1,600. Call Melanie Martin, Health and P.E., 683-8435.

FOR SALE: 19" Hitachi color TV, cable ready, 10 years old, great shape, \$50; available end of March: computer system, 286 40MB with mouse, monitor, keyboard, software, \$350; available after Easter (when new car comes): '81 Accord, 4-door, auto, a/c, Yakima rack, 105,000 miles, great shape, \$2,000. Prices firmly negotiable. Call Ron or Karol Rourke, SES, exts. 2100 and 2103.

FOR RENT: Large, clean, newly redecorated one-bedroom apartment in triplex with covered parking and storage. Water, garbage and sewer paid. No pets. \$325/month + \$275 deposit. 211 24th St. (corner of North "A" St.) in Springfield. Call Doris Sinclair at ext. 2907 in Cont. Ed. or 746-5927 or 344-7905.

THREE-QUARTER SIZE VIOLIN FOR SALE. Handmade by Andy Kim of Portland in 1987. Complete with like-new case, bow, rosin, cleaning cloth, shoulder pad, and chin rest. All for only \$300. Invest--don't rent! Call Greg Fishwick, Counseling, ext. 2321.

CHOCOLATE bunnies and more for sale (ends 3/15) to raise funds for daughter's softball team uniforms. Laura Tamura, Pres. Office, ext. 2301.

THE BOOKSTORE now has class attendance and record books for \$3.20.

FOR SALE: 1983 Toyota Corolla Deluxe 4-door sedan, needs some body work. Mechanically sound. \$1,250. Call Betty Hunt, 747-1361, or ext. 2246, Computer Services.

DEADLINE for The Daily is 12-noon of the day prior to publication on Mondays, Tuesdays, Wednesdays, and Thursdays. Submissions must be made in writing.



# The Daily

Edited by Joan Aschim

Published for the staff of Lane Community College

747-4501, ext. 2591

Wednesday, March 17, 1993

Winter term finals week

## Facilities committee to meet

The Facilities Management Committee will meet on Thursday, March 18, at 3 p.m. in the Board Room. Topics on the agenda include: Disabled Student Services space, Multicultural Center relocation, instructional darkroom priority, Student Services office space for Frank Merrill, the college committee information form, and the construction/remodel priority list. Interested students and staff are invited.

## Limited service

Financial Aid will be closed on Friday, March 19, from 11:30 a.m. to 1:30 p.m..

## Fax notice

If you are directing a fax to our main college fax number (747-1229) please ask the sender to write your telephone extension number beside your name, e.g., "TO: Lloyd Rain (2208)." This will enable us to phone you immediately upon arrival of the fax (instead of one of our staff or work-study students having to look up your number. Thanks.

## Women's Program honored

Linfield College awarded a certificate of merit to the Women's Program at Lane "in recognition of 18 years of unwavering pursuit of equity for women in education, the workforce, the community, and society at-large" at an event on March 10 welcoming Linfield's new president, Dr. Vivian Bull. The Women's Program was one of only three organizations to be so honored. Women's program coordinator is Kate Barry. Patsy Raney is resource coordinator and Jill Bradley is Women's Center coordinator. Charleen Maclean coordinates Transitions to Success and Cindy Veldhuis is program assistant for Transitions to Success.

## Cap and gown order deadline nears

The deadline for faculty to order caps and gowns for graduation is April 2. A drawing for a \$25 gift certificate to the Bookstore will be held for everyone who orders by 4:30 p.m. on April 2. Contact the Bookstore at ext. 2256.

## Graduation plans forming

Lane will hold its 28th graduation on June 4. Adult High School graduation will be on June 3. Both ceremonies will be held in the Silva Concert Hall of the Hult Center.

## Meet Jim Wychules



**Jim Wychules tosses snowballs as well as salads. (Photo taken in December 1992)**

Jim Wychules was hired Dec. 14, 1992, as manager of Foodservices. He came to Lane from Shasta College in Redding, Calif., where he directed food services. Before that, he ran food services at Barton Community College in Great Bend, Kansas. His food services career reaches back to 1979 and includes management for Colorado Springs Airport Flight Kitchen and the Winter Park Food Service Association near Denver.

One of his more memorable experiences was working in Saudi Arabia for Marriott Corporation, he says. At Marriott he helped open the King Abdul Aziz Airport in the early 1980s. The airport featured a special terminal for Muslims on their Haj pilgrimage to the tomb of Mohammed in Mecca.

Wychules has an associate of applied science in food service administration from the State University of New York at Delhi. "I am a product of the very same type of college that this is," he says. "My degree is similar to what students at Lane can earn." He is a member of the National Association of College and University Food Service Administrators.

Wychules is emphasizing healthier food, better quality and a bigger variety for vegetarian customers at Lane. He succeeded in getting the espresso cart approved and operational in less than eight weeks. "We're selling nearly three times more espresso than anticipated," he says, averaging between 250-300 cups a day.

For spring term he plans a stir-fry shop. Also in the works are branded restaurants on campus such as Taco Bell or Taco Time, Pizza Hut or Burger King. Lane employees would operate the restaurants. The parent companies would receive a percentage and any additional revenue beyond expenses would go back to the college.



### **Last chance to sing along with Wayte**

Performing Arts announces that instructor Wayte Kirchner is retiring. After 34 years of teaching, he would like to make his final term a grand one for his noontime chorus class. If you enjoy singing, why not consider treating yourself to a fun class. You'll get to perform in concert at the end of the term. Wayte especially wants to encourage the many staff members who previously have taken the class to join up for the grand finale. Sign up for Chorus, registration number 991, to be held Mondays, Wednesdays and Fridays from 12-12:50 p.m., or just come to class the first day.

### **Judges announced for Tacky Tie contest**

The "Second Annual LCC Unisex Tacky Tie Classic" will be held Thursday, April 1, at 12:15 p.m. in the main campus cafeteria, to raise funds for Campus Ministry. A donation of \$5 per entry is will be accepted.

Judging this particular pageant will be a prestigious panel of prominent participants:

- Bananita Sluginsky, first runner-up in the 1992 slug queen contest, who works at LCC under the pseudonym of Sarah LaMaster, has promised to judge without singing her slug queen talent entry, "If I Were a Big Slug".

- Pete Peterson, last year's winner of the TTTTT (Truly Tackiest Tie Traveling Trophy), has promised to judge fairly and enthusiastically, without whining over not being allowed to compete while also judging.

- David Joyce, photography instructor from Art and Applied Design, has promised to judge as best he can, without any apologies for being totally color-blind. (Why else do you think he only works in black-and-white?)

- Pat Riggs, chair of the LCC Board of Education, will again function as MC and Tie-Breaker without telling any bad jokes.

Judging will be based on the scope of truly bad taste, individuality/originality, and lack of any socially redeeming value. Judges' decisions will be arbitrary, capricious, final and absolutely unappealable.

### **Daily submissions can be made electronically**

Submissions for The Daily may be made via E-Mail to Joan Aschim or on 3-1/2" floppy disk. Disks may be either IBM or Macintosh format with documents written with Microsoft Word or WordPerfect. Disks will be returned. Typed or handwritten submissions will always be accepted.

### **Instructor complimented**

Student Suzanne Stanfill recently wrote to compliment Continuing Education instructor Susan Cooke for being "kind, patient and cheerful even under the most trying of circumstances.... She is a most impressive lady." Cooke teaches "Image Empowerment--Especially for Women." See page 12 of the spring class schedule for more information.

### **Robin and Linda Williams tickets available**

Robin and Linda Williams of "A Prairie Home Companion" fame will bring their notable harmonies and enduring story-songs to Eugene for a benefit performance for KLCC on Wednesday, March 24, 8 p.m., Performing Arts Main Theater.

Tickets are \$7 in advance and \$9 the day of the show. Tickets can be purchased from KLCC and Performing Arts box office. Tickets can also be charged by phone through the KLCC main office. For more information, call ext. 2224.

### **Daily schedule differs during spring break**

The Daily will publish one day only during spring break, on Tuesday, March 23. The deadline for submissions will be 12-noon on Monday, March 22.

### **Network communications demonstration is tomorrow**

Main system software that will allow E-Mail users to access fax and external networks such as Internet and Bitnet will be demonstrated on Thursday, March 18, from 1:30-2:30 p.m., in Business 114. Please call Shirley Baldwin at ext. 2245 if you wish to attend.

### **St. Patrick's Day trivia**

- ♣ St. Patrick was born in Scotland, not Ireland, in A.D. 387, with the birth name Maewyn.
- ♣ At age 16, he was sold as a slave to a Druid chief in Ireland.
- ♣ March 17 is the anniversary of his death in A.D. 493 at 106 years of age.

---

#### **- ADS -**

CAREER opportunities with a growth company, Primerica Financial Services. Part-time or full. Call Jeff Taylor at home at 344-4729. (Science, ext. 2446).

DO YOU PLAN A TAXING SPRING BREAK? The Library can provide the tax forms you need. Ask at the reference desk.

DAILY INFORMATION - Deadline for The Daily is 12-noon of the working day prior to publication on Mondays, Tuesdays, Wednesdays, and Thursdays during fall, winter and spring terms; and Tuesdays during summer term and all term breaks. Submissions must be made in writing and include first and last name, department, and extension number. This information is required to be printed with ads. Ads are free and limited to staff. All items will be published at least once and repeated only if space permits. New items receive priority.



# The Daily

Edited by Joan Aschim

Published for the staff of Lane Community College

747-4501, ext. 2591

Thursday, March 18, 1993

Winter term finals week

## Board, council and branch meetings

- Administrative Services managers, Tuesday, March 23, 8:30-10 a.m., PE 205. For details call ext. 2311.
- Board of Education, Monday, April 19, 7:30 p.m., Board Room. For details call ext. 2202.
- CED Cabinet, Monday, April 5, 1:30-3:30 p.m., Board Room. For details call ext. 2302.
- Classified Council, Wednesday, April 14, 3-5 p.m., PE 205. For details call Gloria Jarvis, ext. 2604.
- College Council, Tuesday, March 30, 3-5 p.m., PE 205. For information call ext. 2313.
- Faculty Council, Thursday, April 8, 3-4:30 p.m., Board Room. For information call David Sherman, ext. 2143.
- Instructional Cabinet, Wednesday, April 7, 1:30-3 p.m., Board Room. For details call ext. 2306.
- Student Services directors, Wednesday, April 7, 9-10:30 a.m., Admin. 206. For information call ext. 2315.

## Farewell party for Michael Goldhammer

A farewell party for Michael Goldhammer will be held on Monday, March 29, from 2:30-4:30 p.m., in the Board Room. He has served as Technology Access of Life Needs (TALN) Center technology information specialist at Lane for the last two years. He will be joining the University of Idaho in Moscow as coordinator of the Idaho Assistive Technology Project. Please stop by and bid him farewell and good wishes on his new adventures.

## Board report

Board Policy 5154 mandating **student health services** was formally deleted from the board policy manual with a 4-2 vote of the LCC Board of Education at its March 10 meeting. Last month in a separate vote, the board declared its intention to eliminate primary medical health care services from the general fund as a budget-balancing measure. The declaration of intention was necessary so that affected staff could be notified of potential lay-off in accordance with employee contracts. In that vote, the board also had indicated it would eliminate the policy in March.

Staff recommended the policy's elimination because of inconsistency; for example, there is no policy mandating food services. However, Chuck Ivey and Larry Mann opposed eliminating the policy saying there isn't anything better in its place to represent board opinion. Emergency care will remain in any event. All board members hope that primary care services can be saved through a student fee. Cindy Weeldreyer advocated that such a fee be mandatory and protected from student government authority.

Chuck Ivey left the meeting before the discussion on a **tuition increase** proposed by the Tuition Committee. Remaining board members reviewed the recommendations for 1993-94 that in-state tuition be raised \$2 per credit hour from \$24 to \$26; that international/out-of-state tuition be raised from \$89 to \$91 per credit hour; that high school completion tuition be raised from \$40 to \$42 per credit; that non-credit tuition be raised from \$1.37 to \$1.44 per class hour; and that the senior discount remain at 50 percent. The committee also recommended that the second \$1 of the \$2 total increase be devoted to support services in all branches.

Vice President Linda Fossen answered several questions about the broad student-staff committee membership and the open process used to arrive at the recommendations, including conducting hearings at noon in the cafeteria to solicit general student feedback. No consensus on tuition was reached and the discussion will be continued next month.

In **other business**, the board unanimously approved the continued appointment of Coopers and Lybrand as college auditors. It also acknowledged the retirement of Wayte Kirchner from Performing Arts, and heard a spirited report from the Florence campus advisory committee. Under statements from the audience, Ron Myers expressed dissatisfaction with his experiences with the technical drafting advisory committee. Chair Pat Riggs assigned Vice President Jim Ellison to investigate.

The board **changed the date of its next meeting** to Monday, April 19, at 7:30 p.m. in the Board Room, preceded by a 5:30 work session.



### **Limited service**

- Financial Aid will be closed on Friday, March 19, from 11:30 a.m. to 1:30 p.m.
- Study Skills office hours for spring break will be 9 a.m. to 1 p.m. Please leave a message on the answering machine if we're not available. Have a quiet week! - Roxanne Flowerday

### **March for the March of Dimes**

The Bookstore is getting a team together for the March of Dimes Walk-A-Thon on April 24. If anyone on campus is interested in joining our team, please contact Sandy Davis at ext. 2681.

### **Research director reports to legislature**

Julie Aspinwall-Lamberts, director of Research, Planning & Evaluation, was one of several community college professionals who spoke to the state legislature during its recent community college budget hearings. She outlined the colleges' efforts to re-examine outcomes assessment, accountability, efficiency, and effectiveness measures.

### **High school dropout rate down third straight year**

The Oregon School Boards Association March 11 issue of its newsletter, "Outlook and Review," cites the Oregon Department of Education as reporting that the state's high school dropout rates declined for the third straight year. The rate for a one-year period ending June 30, 1992, is 5.8 percent compared to 6.5 percent for the previous reporting period. The rate translates into a four-year figure of 21.6 percent, down from 24.1 percent.

### **Business Development Center report out**

Lane's Business Development Center has issued a report for the 1993 legislature that's full of good information. The center provides educational assistance to owner-managed businesses throughout the life cycle of their businesses. That assistance includes counseling, short courses and workshops, and three-year management programs. Sixty-three percent of clients seek short-term training, 29 percent want counseling, and 8 percent are in three-year or other programs. Evaluation shows a high level of satisfaction with center services. Funding in 1992-93 is 70 percent college general fund, 9 percent Oregon Economic Development Department funds, 7 percent Small Business Administration funds, and 14 percent other sources. Jane Scheidecker directs the center. To obtain a copy of the 1993 legislative information report, call the BDC at ext. 2255.

### **Ensure proper credit for tuition waivers**

To ensure proper credit for tuition waivers, employees must present the white copy of the waiver form to Financial Services after it's signed by employee, supervisor and Personnel, and after registering on ClassLine. To ensure credit for courtesy appointments, volunteers must present the pink copy to Financial Services after it's signed by the volunteer, supervisor, vice president, and Personnel, and after registering on ClassLine. Both tuition waivers and courtesy appointments cover tuition only. Employees and volunteers are responsible for the registration fee, any class fees, and any finance or late charges if the payment and/or waiver are late in coming to Financial Services. Refer questions to Financial Services at ext. 2210.

### **Call for nominations**

Attached to today's Daily are nomination guidelines for the League for Innovation Innovator of the Year Award. The award will be for the 1992-93 school year. Deadline for nominations is April 8. Bob Boettcher and Stan Swank, science instructors, shared the award for 1991-92 for their projects using interactive media technology. For additional copies of the call for nominations or for more information, contact League representative Larry Warford, vice president for Community and Economic Development, ext. 2120.

---

- ADS -

FREE FURNITURE TO DEPARTMENTS: 2 supply cabinets, 4 desks with or without credenzas, locking computer cabinet, small computer desk. If interested, call Vicki Doughty, Counseling, ext. 2204, before 5 p.m. Friday, March 19.

FOR SALE: Like new ski machine. Try the un-trak exercise machine for aerobic fitness, \$75 OBO. Ann Clark, Counseling, ext. 2382.

DAILY INFORMATION - The Daily is published for the staff of Lane Community College by Institutional Advancement, Administration 210, 4000 E. 30th Ave., Eugene, OR 97405, (503)747-4501, Joan Aschim, Editor, ext. 2591; Diane Dann, Director, I.A., ext. 2592. Deadline is 12-noon of the working day prior to publication on Mondays, Tuesdays, Wednesdays, and Thursdays during fall, winter and spring terms; and Tuesdays during summer term and all term breaks. Submissions must be made in writing and include first and last name, department, and extension number. This information is required to be printed with ads. Ads are free and limited to staff. All items will be published at least once and repeated only if space permits. New items receive priority.



# The Daily

Guest Editor Angela Miller

Published for the staff of Lane Community College

747-4501, ext. 2591

Tuesday, March 23, 1993

Spring break

## JOINT CLASSIFICATION STUDY

### Another job class specification open hearing set

Another job class specification open hearing has been set for the following group on Tuesday, March 30, from 11 a.m. to 12 p.m., in the Board Room: data processing and computer-related jobs.

### Student success conference tapes available

The audio tape played at Student Success Strategies Conference, "I Did It Their Way" and "Don't Forget History" is available in Student Services. Please call Miriam Thompson, ext. 2315, if you would like to check out the tape or copy it.

### We're looking for a few good souls

Lane is sponsoring an information booth at the "Fiesta Latina," Eugene's Cinco de Mayo celebration on Saturday, May 8. Encouraged by the attendance of 8,000 people last year, "Fiesta Latina" has expanded its activities to include theater, an evening dance, children's entertainment, and food, craft, and information booths. Our booth will need eight to 10 volunteers for two hours each to represent Lane and provide college information. This could be a festive, fun, and relatively painless opportunity for those 10 good souls who possess unfettered enthusiasm! For more information to help you decide how you could spend two hours on May 8, please call Luci Edminster, Cooperative Education, ext. 2024.

### Teleconference to examine campus climate

"Enhancing Campus Climate: Involving the Community," a teleconference sponsored by DeAnza College, will be shown Wednesday, March 24, at 10 a.m. in Center 10. For further information, contact Julie Baker, ext. 2199.

### National Public Radio education series continues tonight

KLCC/KLCO is airing National Public Radio's series, "Wingspread: Contemporary Issues in Education" on Tuesdays at 6:30 p.m. through mid-April. The series was produced at the Johnson Foundation's Wingspread Conference Center in Racine, Wis.

Tonight's program is titled, "School Reform and the Promise of Outcome-Based Measures." The principal speaker will be Charles Schwahn, former teacher and public school administrator. He will describe the demands made of public education, the outcome-based response to those demands, and the points of departure for achieving educational reform. Upcoming topics:

- March 30 - Collaboration Between Educational and Social Service Systems
- April 6 - It Can Be Done: Models for Collaboration.
- April 13 - The Fascination of What's Difficult: Overcoming the Barriers to Collaboration

### Farewell party for Michael Goldhammer

A farewell party for Michael Goldhammer will be held on Monday, March 29, 2:30-4:30 p.m., in the Board Room. He has served as Technology Access for Life Needs (TALN) Center technology information specialist at Lane for the last two years. He will be joining the University of Idaho in Moscow as coordinator of the Idaho Assistive Technology Project. Please stop by and bid him farewell and good wishes on his new adventures.

### Tacky tie update

In response to a clamor of curious queries, contest categories are cordially clarified for Campus Ministry's "Second Annual LCC Unisex Tacky Tie Classic" to be held Thursday, April 1, at 12:15 p.m. in the main campus cafeteria:

- The grand prize winner's name will be engraved for posterity on the Truly Tackiest Tie Traveling Trophy (TTTTT), and the winner will be allowed to proudly display the TTTTT for one year. In addition to the grand contest winner, trophies and/or prizes will be awarded in the following categories:
- Best Coordinated Outfit (for those who wish to flaunt their complete lack of taste in all areas of attire).
- Novelty and/or Worst Original Creation (for the type of inventive persona who constructs decorative refrigerator magnets out of old sweat socks and foam rubber).
- "Off the Racky" Tacky (self explanatory).

For complete contest rules, contact Marna Crawford at ext. 2814 or Anne Bacon at ext. 2436.

### Vote today

Remember to turn in your completed ballot by 8 p.m. today to Lane County Elections, 135 East 6th Avenue, Eugene.



## Faculty professional development leave applications due

Faculty interested in applying for professional development leave during 1993-94 should submit applications by April 15 to Study Skills. Contracted faculty members may apply for up to three terms of paid professional leave to do research, retrain for new assignments at Lane, or return to school. Guidelines/applications are available from Roxanne Flowerday or Pat John in Study Skills at ext. 2439.

## April conferences

- "Diversity in Mentoring," Atlanta, Georgia, April 1-3, \$195.
- "TQM And Beyond: Activating Commitment to Quality," San Diego, April 2-5, \$445.
- "How To Manage Priorities And Meet Deadlines," Eugene, April 5, \$59.
- "Conducting Employee Performance Evaluations," Eugene, April 5, \$125.
- "Managing Multiple Projects, Objectives And Deadlines," Eugene, April 6, \$99.
- "The Fundamentals of Total Quality Management," Eugene, April 7, \$149.
- "Project Management," Eugene, April 12, \$195.
- "Powerful Communication Skills for Women," Eugene, April 13, \$69.
- "Guilt Free Assertiveness," Eugene, April 13, \$115.
- "Guilt Free Assertiveness," Salem, April 14, \$115.
- "Oregon Council of Career And Vocational Administrators Annual Spring Conference: Preparing For High Performance Work Environments," Salishan, April 15-16, \$125.
- 17th Annual OSU Gerontology Conference "Aging: Progress, Problems, & Promises," Oregon State University, April 20-21, \$70.
- "It's A New Ball Game," Association for Computer Professionals in Education, Tacoma, Washington, April 22-23, \$80.
- "How to Manage Anger, Conflict And Confrontations," Salem, April 26, \$99.
- "WordPerfect Shortcuts," Eugene, April 27, \$145.
- "Clemson University's Conference on Professional Development for Women," Portland, April 28, \$165.
- "Managerial Techniques For Secretaries & Administrative Assistants," Portland, April 29, \$165.
- "Getting The Most Out Of WordPerfect," CareerTrack, Eugene, April 29, \$99.
- 10th Annual Symposium on Technology Education, "Writing Across the Curriculum," OIT, Klamath Falls, April 30-May 1, \$70.
- "Building Communities For The World of Tomorrow," AACC Annual Convention, Portland, April 28-May 1, 1993. \$395 until March 22; special rate for Faculty - contact Marianne Kimball, Office of Instruction, ext. 2306.

For more detailed information, contact Julie Baker, ext. 2199.

## Staff events feature Oregon Trail and Oregon coast

The Classified Professional Development Team and LCCEF are sponsoring the following events for the whole college. Contact Alen Bahret, Computer Services, ext. 2247 or Julie Baker, Community and Economic Development, ext. 2199, for more information and reservations.

- That Pioneer Road: A Celebration - Thursday April 22  
A scrumptious authentic Oregon Trail dinner prepared for your dining pleasure with a preview of Pete Peterson's theatrical production celebrating Lane County's own lost wagon train.  
6:00 p.m. - No Host Social Hour  
6:30 p.m. - Dinner Served (NE Cafeteria)  
7:45 p.m. - "That Pioneer Road" Reading  
Cost \$10-\$15 depending on market food prices
- An Oregon Coast Adventure - Saturday, May 1  
A motor coach trek to the beautiful Oregon Coast. The bus will load and depart from LCC main campus traveling to LCC at Florence, Cape Perpetua, Newport, Depoe Bay and Lincoln City.  
8:00 a.m. - Depart LCC Eugene  
9:30 a.m. - LCC at Florence  
11:30 a.m. - Oregon Coast Aquarium at Newport  
3:00 p.m. - Lincoln City - Kite Festival and Outlet Shops  
8:30 p.m. - Return to LCC  
Cost \$15.00 for bus; \$6.30 for aquarium (optional)

---

### - ADS -

WANTED: Anyone with ideas and/or solutions being sought! I have been given excellent carpet & pad from someone in Battleground, Washington. NEEDS: Strong body/bodies with two pickups or a large truck to haul carpet down to Springfield, Oregon. I will also need ideas on where to store it. THEN: LABOR NEEDED: One room at a time (four total). Estimated square yards: 100-150. Audrey Razmus, 747-9613 (Foodservices, ext. 2670.)

VISITING AUSTRALIAN research scientist, wife and two children, ages 4 and 10 want to rent a house or apartment from about June 1-July 15. Call Lynne Swift, Training and Development, ext. 2503

DEADLINE for The Daily is 12-noon of the day prior to publication on Mondays, Tuesdays, Wednesdays, and Thursdays. Submissions must be made in writing.



# The Daily

Guest Editor Angela Miller

Published for the staff of Lane Community College

747-4501, ext. 2591

Monday, March 29, 1993

Week 1 of Spring Term

## Outcomes Assessment Faculty Intern

During Spring term, Joan Ryan (Business Department) is launching an exciting project for the Office of Instruction and the Office of Research, Planning and Evaluation. In preparation for the college's accreditation self-study, Joan will identify exemplary methods used by faculty to assess students' performance. These methodologies and assessment strategies will be presented by department and on a program basis. All instructional departments will be included in the inventory. We hope faculty members and departments will provide Joan with lots of good ideas and assistance. For further information, contact Julie Aspinwall-Lamberts, ext. 2576 or Joan Ryan, ext. 2157.

## JOINT CLASSIFICATION STUDY

### Another job class specification open hearing set

Another job class specification open hearing has been set for the following group on Tuesday, March 30, from 11 a.m. to 12 p.m., in the Board Room: data processing and computer-related jobs.

## Farewell party for Michael Goldhammer

A farewell party for Michael Goldhammer will be held today, 2:30-4:30 p.m., in the Board Room. He has served as Technology Access for Life Needs (TALN) Center technology information specialist at Lane for the last two years. He will be joining the University of Idaho in Moscow as coordinator of the Idaho Assistive Technology Project. Please stop by and bid him farewell and good wishes on his new adventures.

## We're looking for a few good souls

Lane is sponsoring an information booth at the "Fiesta Latina," Eugene's Cinco de Mayo celebration on Saturday, May 8. Encouraged by the attendance of 8,000 people last year, "Fiesta Latina" has expanded its activities to include theater, an evening dance, children's entertainment, and food, craft, and information booths. Our booth will need eight to 10 volunteers for two hours each to represent Lane and provide college information. For more information, contact Luci Edminster, ext. 2024.

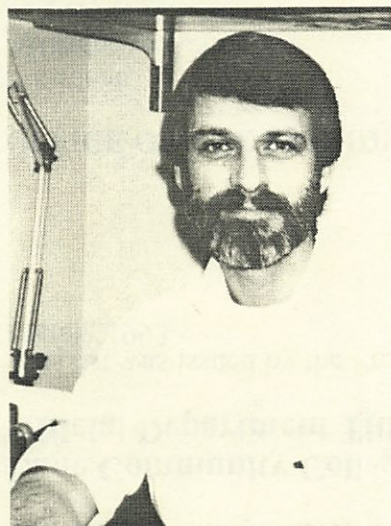
## New Social Science class offered spring term

A new class, "Perspectives on African American Experience," registration #1502, is being offered spring term on Tuesdays and Thursdays, 2:30-4 p.m., in Apr. 221 beginning March 30. This class is offered through the Visiting Faculty Program. Flyers are available at the Counseling Department desk. The course is not listed in the spring class schedule; faculty are encouraged to recommend the course to their students. For additional information, contact Hasani Kudura at 346-0644 or 485-5832.

## Ensure proper credit for tuition waivers

To ensure proper credit for tuition waivers, employees must present the white copy of the waiver form after it is signed by employee, supervisor and Personnel, to Financial Services after registering on ClassLine. To ensure credit for courtesy appointments, volunteers must present the pink copy after it is signed by the volunteer, supervisor, vice president and Personnel, to Financial Services after registering on ClassLine. Both tuition waivers and courtesy appointments cover tuition only. Employees and volunteers are responsible for the registration fee, any class fees, and any finance or late charges if the payment and/or waiver are late in coming to Financial Services. Financial Services, ext. 2210.

## Meet Dale Green



Dale Green became a full-time instructor in the Mathematics Department this fall. Before joining Lane, he taught math at Linn-Benton Community College and at Oregon State University. In addition to teaching, he worked two-and-one-half years as an administrative accountant for Benton County.

Green uses innovative teaching techniques whenever possible "to provide balance and to meet a variety of learning styles." Those innovations include the use of TI-81 graphing calculator and microcomputers as learning tools, integrating writing into math assignments, group work, and other strategies. He scans the newspapers for practical problems suitable for the classroom.

He has a master's degree in mathematics from OSU where his coursework emphasized algebra and number theory. He earned a bachelor's in economics from the University of Oregon. He regularly attends professional workshops, among them the "Oregon 2000 Technology Conference" held at OSU last July. He belongs to several mathematicians' associations.

At home, many interests occupy Green, including reading German and studying astronomy. He has built his own 8" reflecting telescope. He is married and is raising a one-year-old son.



## **Lane Community College Official Department Titles**

This list was issued by the President's Office in March, 1993.

### **OFFICE OF THE PRESIDENT**

President  
Affirmative Action  
Employee Relations  
Lane Community College at Cottage Grove  
Lane Community College at Florence  
Oregon Small Business Development Center  
Network

### **OFFICE OF ADMINISTRATIVE SERVICES**

Vice President for Administrative Services  
Campus Services  
    Communications  
    Facilities Planning  
    Grounds  
    Housekeeping/General Services  
    Laundry  
    Plant Maintenance  
    Security and Auxiliary Services  
    Vehicles  
Computer Services  
Financial Services  
Personnel Services  
    Archives  
    Records Management  
Purchasing Services  
    Warehousing Services

### **OFFICE OF COMMUNITY AND ECONOMIC DEVELOPMENT**

Vice President for Community and Economic  
Development  
Adult Basic and Secondary Education Department  
    Adult High School  
    Adult Basic Education  
    Adults With Special Needs  
    English as a Second Language  
    General Education Development  
    Life Experience Assessment Program  
Business Development Center  
Business and Industry Services  
    (formerly Customized Training)  
Continuing Education  
    Downtown Technology Center  
    Retired Senior Volunteer Program  
    Senior Companion Program  
Lane Community College Downtown Center  
Lane Community College Foundation  
Specialized Employment Services  
Training and Development Department  
Institutional Advancement  
    Printing/Graphics  
KLCC-FM  
Research, Planning & Evaluation

### **OFFICE OF INSTRUCTION**

Vice President for Instruction  
Curriculum and Scheduling Department  
College High/Tech Prep (formerly College High)  
Instructional Departments  
    Art and Applied Design Department  
    Business Department  
        Business Education Center  
    Computer Information Technology  
        Department  
    Cooperative Education Department  
    Electronics Department  
        Audiovisual  
        Electronic Services  
        Instructional Computing  
    English, Foreign Language and Speech  
        Department  
    Family and Health Careers Department  
        Child Development Center  
    Flight Technology Department  
    Health and Physical Education Department  
    Industrial Technology Department  
        Apprenticeship Training  
        Student Restaurant  
Library  
Mathematics Department  
    Math Resource Center  
Mechanical Technologies Department  
Media Arts and Technology Department  
Performing Arts Department  
Science Department  
Social Science Department  
Study Skills Department  
Telecourses

### **OFFICE OF STUDENT SERVICES**

Vice President for Student Services  
Admissions/Registration Office  
    High School Relations Office  
Athletics Department  
    Intercollegiate Sports  
    Intramural Sports  
Counseling Department  
    Assessment and Testing Center  
    Career Information Center  
    Community Center for Family Counseling  
    Counseling and Advising Center  
    Human Development Classes  
Financial Aid Office  
    Job Placement Office  
Student Support Services  
    Bookstore  
    Child Care Resource Connection  
    Disabled Student Services  
    Foodservices  
    Student Health  
    Substance Abuse Prevention  
    TALN (Technology Access for Life  
        Needs)  
    Women's Program  
        Transitions to Success  
Student Activities  
    Denali  
    International Student Activities/  
        Community Volunteer Programs  
    Multicultural Center  
    Phi Theta Kappa  
    Associated Students of Lane Community  
        College (ASLCC)  
        ASLCC Childcare Co-op  
Student Records  
    Veterans Office  
The Torch



# The Daily

Edited by Joan Aschim

Published for the staff of Lane Community College

747-4501, ext. 2591

Tuesday, March 30, 1993

Week 1 of Spring Term

## College Council meets today

College Council will meet today from 3-5 p.m. in PE 205. A synthesized vision statement for the college will be discussed.

## Condolences

President Jerry Moskus' father, Raymond Moskus, died of a heart attack on Saturday, March 27, in Decatur, Ill. Cards may be sent to Jerry's home at 4385 Inwood, Eugene 97405. Donations may be made to the American Heart Association, 1255 Hilyard, Eugene 97401. The association will notify family members of contributions. During Jerry's absence, Vice President Jim Ellison is acting president.

## Retrained timber workers to hold "Back to Work" rally

The Dislocated Worker Program will host a "Back to Work" rally for 400 graduating participants on Wednesday, April 7, from 4-6 p.m. in Forum 308-309. Retrained timber workers will hear a panel of local employers describe their businesses and answer questions about hiring practices. Panelists scheduled so far are representatives from area businesses Point Control Co., a software company, Valhall, Inc., a panelized housing manufacturer; and Jones & Roth, an accounting firm. Live music will be provided by Glen Jones and Southbound, a self-formed group of program participants.

Training and Development employment specialist Toby Finkelstein says, "We're rallying students and businesses in the effort of finding jobs for these 400 students. We're starting now, rather than waiting until June, to prepare and assist our participants. We hope that with a head start we'll be successful in placing these people."

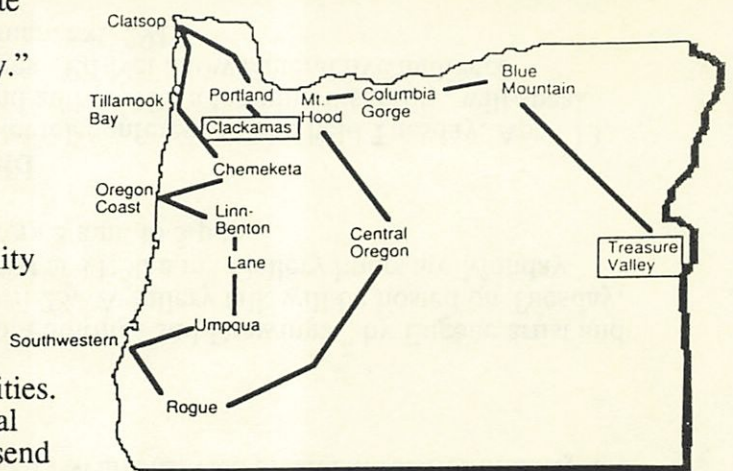
The Dislocated Worker Program is operated by LCC in partnership with the Southern Willamette Private Industry Council and the Oregon Employment Division. About 90 percent of program participants enroll for retraining at Lane. The remainder enroll in other public colleges or private vocational schools.

## Community college flag follows unique "Oregon Trail" in April

Oregon's 16 community colleges will celebrate Community College Month in April with the theme, "Oregon Community Colleges: Roads to Opportunity." The highlight of the month is a statewide road trip during which students will carry a celebratory flag along a special "Oregon Trail" connecting all 16 colleges. The flag will be presented to Governor Barbara Roberts at a rally kicking off the national convention of the American Association of Community Colleges in Portland on April 28.

Lane's "flag day" will be Monday, April 19. Gather on Bristow Square outside the cafeteria on main campus at about 12-noon to enjoy the festivities. Watch for Lane's president, board members, and local mayors to help welcome the flag from Umpqua and send it off with ASLCC President John Mitchell to Linn-Benton. He will carry the flag in a helicopter from the Flight Technology program and a ground crew will travel in a motor home from the Recreational Vehicle Service Technician program.

Also along the way, each college will try to collect a penny per student to create a "Roads Scholar" award fund. A \$100 winner will be selected at Lane and entered in a statewide competition for an additional \$400 award. Pitch your pennies in the glass jar at Foodservices check-out during April to contribute to this special fund. The "Roads to Opportunity" event is just one way Lane is celebrating Community College Month. Watch The Daily for continuing information.



## Vision care benefit explained

The need for glasses is very common. By age 65 almost 100 percent of the population wears glasses. If you need to see a vision care specialist for an eye examination, be aware of the following:

Classified are covered by Blue Cross/Blue Shield or Vision Service Plan and are eligible for an exam every 12 months and glasses every 24 months for members 17 and older; once every 12 months for members under 17. Faculty are covered by Blue Cross/Blue Shield and are eligible for exam and glasses every 24 months. Management are covered by Blue Cross/Blue Shield or Vision Service Plan and are eligible for an exam and glasses every 12 months. When you receive services from a participating provider, you will normally receive full coverage under these plans (certain services are not covered). When you receive services from a non-participating provider, coverage will be based on a percentage of cost or a defined amount.

If you have any questions, contact Marie Nelson in Personnel Services at ext. 2590.



## Career Fair '93 less than a month away

*"Much improved from last year! Assistants were wonderful and helpful. Want same location next year." - Manpower Temp Services, Career Fair '92*

Career Fair '93 will be held Wednesday, April 14, from 10 a.m. to 2 p.m. on main campus. Employers will share information about their businesses and career opportunities for students, graduates and the public. For details, call the Job Placement Office at ext. 2326.

## Faculty Professional Development Team calls for proposals

The Faculty Professional Development Team has an exciting opportunity this spring! Requests for proposals are being distributed to all full- and part-time faculty to allow application for grant money for professional development projects that will stimulate and enhance the quality of teaching and learning at LCC. The team has a base fund of \$10,000. This fund is not intended to duplicate those activities funded through the Short or Long Term Development Leave Committees. Proposals are due to the committee April 19. Developers of funded proposals will receive notification by May 3. Check your mailbox or with your department secretary for an application or contact Julie Baker at ext. 2199.

## Call for nominations

Attached to today's Daily are nomination guidelines for the League for Innovation in the Community College Innovator of the Year Award for 1992-93. Deadline for nominations is April 8. For more information, contact League representative Larry Warford, vice president for Community and Economic Development, ext. 2120.

## Paintings and drawings by Satoko showing

The Art Department Gallery will show "Satoko: Paintings and Drawings," by Eugene artist and Lane instructor Satoko Okito, now through Friday, April 23. A gallery talk will be hosted on Tuesday, April 13, at 10 a.m., followed by a reception for the artist at 11:30 a.m. Gallery hours are Monday through Thursday from 8 a.m. to 10 p.m. and Friday from 8 a.m. to 5 p.m.

## Learning disabilities teleconference to be held

"Living With Learning Disabilities" is an Ed-Net teleconference to be held Tuesday, April 13, from 6-8 p.m. in Center 10. Nancie Payne, a trainer and author with a learning disability, will speak along with a panel of other adults with similar challenges. Ed-Net allows interactive audience participation. For more information, contact Liz Coleman, ext. 2919.

## More April conferences

- "Writing Across the Curriculum," Tenth Annual Symposium on Technology Education, OIT, Klamath Falls, April 30-May 1, \$70.
  - "Building Communities For The World of Tomorrow," AACC Annual Convention, Portland, April 28-May 1, 1993, special rate for faculty--contact Marianne Kimball, Instruction, ext. 2306.
- For more detailed information, contact Julie Baker, ext. 2199.

## National Public Radio education series continues tonight

KLCC/KLCO is airing National Public Radio's series, "Wingspread: Contemporary Issues in Education" on Tuesdays at 6:30 p.m. through mid-April. Tonight's program is "Collaboration Between Educational and Social Service Systems." The principal speaker will be Judy Langford Carter, executive director of the Family Resource Coalition in Chicago.

## Thanks

Campus Ministry thanks everyone who bought tickets for the recent raffle. Congratulations to Mary Hanson in Math for winning the afghan, and to Julie Watson in Foodservices for winning the quilt rack. A special thank-you to Herman Wela for all his work selling tickets. Thanks again to all of you.

- Jim Dieringer, ext. 2850

## - ADS -

ROSES FOR SALE: Treat someone special to a dozen long-stemmed roses and in the process help raise funds for scholarships at Eugene area high schools. The Eugene Metro Rotary is sponsoring the sale through May 4. Delivery will be made May 14. Cost is \$15 per dozen. To order, call Ginny (Nelson) Reich, EFL&S, ext. 2426, or Linda Waddell, FA, ext. 2349.

INCOME TAXES: Fast, low-priced, computerized returns with personalized service to find all deductions. Call Jeff Taylor at home at 344-4729. (Science, ext. 2446).

FOR SALE: Apple StyleWriter® ink-jet printer. One year old with light use. Comes with all accessories, manual, and fonts. Great for student or home use. Listed at \$359. Asking \$190. And STILL FOR SALE, 1977 pink Thunderbird. Best offer! Sarah LaMaster, IA, ext. 2312, or 484-4913 evenings.

WANTED: Anyone with ideas and/or solutions being sought! I have been given excellent carpet & pad from someone in Battleground, Washington. NEEDS: Strong body/bodies with two pickups or a large truck to haul carpet down to Springfield, Oregon. I will also need ideas on where to store it. THEN: LABOR NEEDED: One room at a time (four total). Estimated square yards: 100-150. Audrey Razmus, 747-9613 (Foodservices, ext. 2670.)

VISITING AUSTRALIAN research scientist, wife and two children, ages 4 and 10 want to rent a house or apartment from about June 1-July 15. Call Lynne Swift, Training and Development, ext. 2503.

DEADLINE for The Daily is 12-noon of the day prior to publication on Mondays, Tuesdays, Wednesdays, and Thursdays. Submissions must be made in writing.



# The Daily

Edited by Joan Aschim

Published for the staff of Lane Community College

747-4501, ext. 2591

Wednesday, March 31, 1993

Week 1 of Spring Term

## **Dislocated Worker Program makes the national news**

Prompted by President Bill Clinton's timber summit, Lane's nationally-recognized Dislocated Worker Program was sought out by two major news media. The program is mentioned in the April 5 issue of Newsweek and will appear on the CBS Evening News, probably this Thursday or Friday.

## **Lane student selected for NASA training program**

Lane student Kristine Reynolds Sohnrey has been accepted to the NASA Space Life Sciences Training Program, June 19 to August 1. This all-expense paid program is based at the Kennedy Space Center and provides nine space life science credits from Florida A&M. Sohnrey is one of 40 college students out of 3,500 domestic and foreign applicants. She credits her selection to her diverse background: employment in computers at Digital and Raytheon, lab work at the UO Molecular Biology genetics lab, and coursework at UO and LCC. She saw the program notice last fall term on the LCC Science Department bulletin board. Alice Kaseberg, Mathematics, said "I was privileged to write her a letter of recommendation or the program."

## **Curriculum meeting changes**

There will not be a Curriculum Idea Forum on April 7. Also, the Curriculum Approval Committee meeting scheduled for April 28 has been moved to May 5 at 3:15 p.m. in PE 205.

## **Cafeteria adds another menu item**

Foodservices invites staff and students to check out the new Chinese stir-fry in the cafeteria on Wednesdays and Fridays beginning today.

## **Nominations sought for Schafer award**

Attached to today's Daily is a flyer describing the Eldon G. Schafer Endowment for Innovation and guidelines for applying. Nominations are due May 3 to the LCC Foundation. The endowment is in its sixth year. Welding Instructor Ed Humes won the nearly \$6,000 "Seed Money" award in 1992 to develop a welding manufacturing class. "Pat on the Back" awards were given to Humes for fabrication work on the state capitol building, to Jean Names of the Small Business Management program for developing a network for women program graduates, and to Beth Swank for developing a career-life planning packet for the Counseling Department.

## **Applications due**

Classified training and development applications are due in Personnel Services by April 9 in order for requests for funds to be reviewed at the next committee meeting. - Judy Ward, ext. 2583

## **Correction**

An insurance statement in the March 30 Daily was incorrect. Please note that all staff members, including classified, management and faculty, are now covered by Blue Cross/Blue Shield of Oregon for vision insurance. The coverage with the former vision insurance, Vision Service Plan, was canceled as of Dec. 31, 1992. If you have questions, contact Marie Nelson in Personnel Services at ext. 2590.

## **David Joyce exhibits**

Media Arts and Technology instructor David Joyce has a photo sculpture installation titled "Escaping Man" at the UO Museum of Art through May 16.

## **Fund needs donations**

When you pay your bills this month, please take a moment and send a dollar to the Corinne Meehan Insurance Fund, c/o Julie Baker, IA. Corinne recently had back surgery for a ruptured disk, and will be having hip replacement surgery next month. The fund will make her insurance premium payments while she is on disability pay recovering from her surgeries. Every dollar helps. Thanks!

## **Benefit for Transitions to Success**

Altrusa International of Eugene will hold its annual Izzy's pizza party on Tuesday, April 27, from 11 a.m. to 10 p.m. at 210 Division Street in Eugene. Funds raised will go to the Transitions to Success program at Lane, Womenspace, and the Children's Literacy Project. For more information contact Virginia Collins at 465-4384.

## **Did you know?**

❖ Community colleges account for 50 percent of all first time freshmen enrolled in institutions of higher education. Celebrate April as Community College Month. Commemorative napkins, buttons and banners are available for your April celebration. Contact Julie Baker, IA, ext. 2199.



## Essays help celebrate Community College Month

Celebrating April as Community College Month at Lane were essay competitions for students and faculty sponsored by Institutional Advancement and English, Foreign Language and Speech. Winners will be published in The Daily on Wednesdays now through April.

English instructor Sharon Thomas coordinated the competitions. Judging the student essays were Thomas, Joan Aschim, IA, Faith Imhoff, student and writing tutor, and English instructors Peter Jensen and Ken Zimmerman. Project assistance was provided by Aschim and IA staff Julie Baker, Diane Dann, Sarah LaMaster, Angela Miller and Susan Sutton.

The students were asked to describe "my light-bulb experience with learning" explaining when they discovered the importance of learning and how Lane contributed. First prize was \$100, second was \$75, and third was \$50. First-place winner was Leslie Keith; Arlene Hougland, second; Joanne Young, third; Tony Thornton, Kristine Reynolds, and Jenifer Wick, honorable mentions (honorable mentions will not be published).

Keith's essay is featured in the winter 1993 "Denali", the spring class schedule, and below:

---

### A Relative Revelation

by Leslie Keith

This spring marks the end of my second year of college. College life came to me later than what is considered traditional, or what was traditional. After graduating from high school I joined the Army and spent four years attempting to grow up (hasn't happened yet). At the end of that four years I became part of the great American system of higher education, destined, I believed, to learn the secrets to life and success in what we in the military called "the real world."

Soon, however, I found that the steps necessary to graduate from any recognized school included subjects that I could find absolutely no use for in the "real world," particularly that seething pit of mental anguish called algebra. The idea soon plagued my mind. Why should I go through these pains for a piece of knowledge that I have no use for? To further compound my frustration, four out of five graduates (including some teachers) that I questioned did not remember simple equations that they themselves had performed just years before. Not only could I find no practical use for it, but I might not even remember it to use.

Eventually my distress started to affect the rest of my work. I even began to feel animosity toward my math teacher for being one of the "enemy." Soon I started feeling the same about all my subjects. Why was I wasting money and, worse yet, time on such a useless endeavor?

I was on the verge of tossing the whole education idea out the window. This much pain and anguish was just not worth it. The Mayans had a firm grasp of algebra and where did it get them? Hell, Einstein flunked math when he was a kid and look how well he did. The phrase that everybody associates with him, "Everything is relative," stuck in my head. I began to hear it like some faint voice from within: "Everything is relative...everything is relative...." Again I showed my negative attitude. "That's fine for science but what about the 'real world'? How could I ever relate something as obscure as algebra to it?"

I figured algebra was useless—all we ever did in class was solve big, obscure problems by

breaking them into little problems and using whatever formula works to solve them. Just then it hit me. It hit me so hard that I burst out in class, Ha!" (much to the annoyance of my fellow students). How does that differ from any problem one experiences in life?

My interest compounded, and soon I was relating all kinds of things to my new framework of thought. When I have to create a program for computer class, the first thing I do is look at the problem and divide it into subsections, then follow a set formula to create an algorithm. Algorithm. Gee, where had I heard that one before? Even writing fell into the pattern. How do you write a coherent essay? I'll tell you how. You use a formula. You take an idea and develop separate parts of that idea into paragraphs and bring them all together to form a whole picture. Perhaps everything is relative. Those who look for higher math's practical applications in the "real world" will not find the answer in the numbers. Terms like " $y=mx+b$ " may not be found in too many of today's businesses. The answers they seek are in the processes that one learns while completing the dreaded numerical tasks. By completing the core requirements of math and science, and nearly all of the subjects assigned in college, you are showing the "real world" that you have learned and exercised a group of vital skills necessary to succeed. Those skills include problem solving, analytical thinking, and working diligently toward a goal that is not often visible, and can take years to achieve.

Were it not for the tutelage of a few caring, vigilant, and slightly eccentric professors that hang their hats at Lane, my revelation might never have occurred. It may have been my discovery, but without the "map" they provided me, I could not have come as far along the road as I have today. So the next time you open a textbook don't look at it as just a math book, or just a science book. See it for what it really is—a manual for success.

(Leslie Keith was born in New York, grew up in Creswell, and graduated from Thurston High. He started at Lane last summer.)

---

### - ADS -

FREE TO GOOD HOME: AKC male black lab, 1 year old, all shots, healthy, energetic. "Max" needs someone to love. Linda Mooney, 933-2511, or AHS, 726-2214 ext. 2518.

PEN PAL WANTED: 22-year-old Angolan woman, speaks English, Spanish, and Portuguese, wants a pen pal. Write: Lidia Paseoal dos Santos, PO Box 18284, Luanda, Angola. (Lorna Funnell, Cont. Ed., ext. 2906.)