

# The Daily

Guest Editor Angela Miller

Published for the staff of Lane Community College

747-4501, ext. 2591

Monday, May 3, 1993

Week 6 of Spring Term

## **This week's meetings**

- Administrative Services managers, Tuesday, May 4, 8:30-10 a.m., President's Office. For details call ext. 2311.
- Budget Committee, Wednesday, May 5, 7 p.m., Board Room.
- CED Cabinet, today, May 3, 1:30-3:30 p.m., Board Room. For information call ext. 2120.
- College Council, Tuesday, May 4, 1:30-3 p.m., Board Room. For information call ext. 2313.
- Curriculum Approval Committee, Wednesday, May 5, 3-4:30 p.m., Board Room. For details call ext. 2306.
- Instructional Cabinet, Wednesday, May 5, 1:30-3 p.m., Board Room. For details call ext. 2306.
- Legislative Action Team, Thursday, May 6, 7:30-9 a.m., Board Room. For information call ext. 2302.
- Student Services, Wednesday, May 5, 9-12 a.m., Adm. 206. For information call ext. 2315.

## **Counseling Department open house**

The Counseling Department will host an open house Wednesday, May 12 from 2:30-4:30 p.m. in the Counseling Department to celebrate the completion of the remodel and to express thanks to all LCC and community folks who made it happen, to the departments who provided temporary homes for counseling staff and all LCC students and staff who were inconvenienced by the noise and mess. There will be a short recognition program at 3 p.m. Please join us.

## **College Council meets tomorrow**

College Council will meet Tuesday, May 4, from 1:30-3 p.m. in the Board Room. The agenda includes the May Board agenda, airport expansion project, 1994-95 budget criteria/process, investment opportunities proposals, 1993 Christmas holiday schedule, vision development and 1993-94 College Council membership.

## **Professional development workshop open to all**

Spaces are still available for tomorrow's presentation at Emerald Valley Inn on "Learning Styles and Their Impact on the Team." This workshop is sponsored by the Classified Professional Development Team and is open to all Lane employees. To make reservations or for more information, contact Julie Baker, ext. 2199.

Attention van riders: Those who need transportation to Emerald Valley Inn, Alen Bahret and the college van will depart from the west flag pole at 7:15 a.m. for the morning session and again at 12:15 p.m. for the afternoon session. Call Bahret at ext. 2247 if you have questions about transportation.

## **Budget Committee meeting**

The Budget Committee will meet Wednesday, May 5, at 7 p.m. in the Board Room. Agenda items include election of chair, vice chair and secretary of the Budget Committee, presentation of the budget message by President Jerry Moskus, and presentation of the budget document and review of the format by budget analyst Carol Beckley.

## **Open meeting regarding geriatrics today**

You are invited to attend an open meeting about curriculum ideas and proposals for content areas regarding geriatrics. This discussion will be held today at 1 p.m. in the HEA 272.

## **Information kiosk to be dedicated**

Staff are invited to the dedication of a new touch-screen information kiosk on Wednesday, May 5, at 2 p.m. by the stairs to the Bookstore on the second floor of the Center Building. The name of the information system will be announced at that time. The winning name was submitted by Joyce Garibay in Family and Health Careers. Thanks to all who submitted suggestions. The system will provide students with a printed copy of their schedule and transcripts. Events and a map of the college will be available on screen.

## **Celebrate Quatro de Mayo!**

The International Folk Dance class invites everyone to celebrate **Cinco de Mayo** a day early by joining them on Bristow Square for some participatory Mexican folk dances Tuesday, May 4, from 11 a.m. to noon. In the event of bad weather, the event will be held in PE 203, from 11-11:30 a.m. - Nancy Anderson, ext. 2816



### **Mainframe training session**

A mainframe training session open to all staff will be held Tuesday, May 11, from 8-10 a.m. in Computer Services. Procedures for using the mainframe will be reviewed. Bring questions and/or specific problems to class. To reserve a spot, call Pam McClelland at ext. 2459.

### **The Daily to publish only once this week**

The Daily will be published today only this week. The regular schedule of Monday-Tuesday-Wednesday-Thursday will return May 10. Deadline for that issue is 12-noon on Friday, May 7.

### **Management Personal Development Committee to meet**

The Management Personal and Professional Development Committee will meet Thursday, May 20, to review applications for both personal and professional development. Please submit applications by Friday, May 14. The committee will be unable to review late and incomplete applications. Contact Lloyd Rain, ext. 2208 for forms and guidelines.

### **Kudos**

Cooperative Education coordinators Peggy Marston and Dixie Maurer-Clemons have received conformation that their joint paper, titled "What is Working in International Cooperative Education," has been accepted by the 8th World Conference on Cooperative Education for a workshop presentation, at Dublin City University, Dublin, Ireland. The paper will also be published by the World Association for Cooperative Education.

### **Thanks**

The LCC speech team thanks all those at Lane who helped to make the 1993 Northwest Community College Championships the smooth success it was. Special thanks to the expert managers: JoAnne McGillivray, Cheryl Alonso, Wendy Westfall, Ann Whipple, Kerri Houghton, Vince Jones, and the entire LCC custodial staff. - Barbara Breaden, Director of Forensics

### **AMA Secretaries Briefing successful**

The 6th Annual American Management Association Secretaries Briefing held on Wednesday, April 21, was video taped and is now available for 2-day check out from the library. This 2-hour video conference focuses on ways to close the communication gap between men and women at work, tips for getting more done in limited time, ways to deal with difficult behavior and techniques for managing stress. A highlight in the conference is Natasha Josefowitz, renowned writer and lecturer. Josefowitz discusses differences in male/female communication styles and provides ways to improve communication and working relationships. LCC participants gave this conference high marks. Many thanks to Julie Baker and Peg Allison for their assistance in planning the event, and to CED for providing the funds to license the event and purchase the refreshments. - Cynde Leathers

### **"Enhancing Self-Esteem for Increased Performance" seminar offered**

"Enhancing Self-Esteem for Increased Performance" will be the topic of a workshop offered through LCC's new Seminar Series on Thursday, May 13, from 8:30 a.m.-12:30 p.m. at the LCC Downtown Center. This seminar, taught by Don Mihalow, focuses on improving performance at work by replacing unhealthy ways of viewing ourselves with positive, healthy patterns. For more information, contact Peg Allison, ext. 2923.

### **Native Americans and the Oregon Trail**

Lane's celebration of the 150th Anniversary of the Oregon Trail continues on Friday, May 7, Forum Building, at 11 a.m.-12 p.m. with a presentation of Native American drums, dancing and fry bread. A panel discussion on "Occupying Native American Lands" will follow in Forum 308 from 12-3 p.m. All events are free and open to the public.

### **Annual employee reception scheduled**

The annual reception for 10-year, 20-year, 25-year and retiring employees will be held Thursday, May 13, 3-5 p.m. Please mark your calendars.

---

#### **- Jobs -**

INSTRUCTOR-66% time, temporary through 3-19-94; faculty; closes 5-11-93.

#### **- ADS -**

FOR SALE: Queen-size, waveless waterbed. Beautiful oak sides and bookcase headboard. Just like N-E-W! \$450, firm. Please leave a message on the recorder and I will return your call. Lucile Peart, LCC at Cottage Grove, 942-8171.

AT&T MODEL 1310 answering machine, \$25; AT&T Touch-a-matic model 1600, 15 number memory phone, \$25. Both in working condition and with original manuals. Anne Bacon, Instructional Computing, ext 2436 or Jim Bacon, 746-7574.

DEADLINE for The Daily is 12-noon of the working day prior to publication on Mondays, Tuesdays, Wednesdays, and Thursdays. Submissions must be made in writing and include first and last name, department, and extension number. This information is required to be printed with ads.



# The Daily

Guest Editor Angela Miller

Published for the staff of Lane Community College

747-4501, ext. 2591

Monday, May 10, 1993

Week 7 of Spring Term

## This week's meetings

- Administrative Services managers, Tuesday, May 11, 8:30-10 a.m., President's Office. For details call ext. 2311.
- Classified Council, Wednesday, May 12, 3-5 p.m., PE 205. For information contact Gloria Jarvis, ext. 2604.
- Faculty Council, Thursday, May 13, 3-4:30 p.m., Board Room. For details call Dave Sherman, ext. 2143.
- Manager's Forum, Friday, May 14, 8:30 a.m., Forum 309. For information call Marie Matsen, ext. 2313.

## Korean slide presentation today

A presentation about Chinju, Eugene's sister city in Korea will be held **today**, from 12-1 p.m. in the Board Room. Marilyn and Gary Rholl will share their experiences as they traveled with a Eugene sister city delegation during spring break 1993. Brown bag lunches are welcome.

## United Way seeking volunteers

The United Way Volunteer Connection is currently seeking volunteers to fill positions at non-profit and public agencies that represent urgent needs within the community. More than 700 volunteer opportunities are available through the Volunteer Connection. Volunteers are needed in the following areas: telephone crisis, donor pick-up, clerical, gift shop attendants and food repackaging.

As a volunteer, you will benefit by getting to know your community and its resources, improving the quality of life for people in your community and using the skills you have to make a difference. To learn more about these and other opportunities, call 683-9000.

## Please don't pick the daisies

The Grounds Department would like to remind everyone that the flowers on campus represent a major investment by the college. This investment was made to improve the appearance of the campus for the enjoyment of all students and staff. Anyone picking these flowers not only detracts from the appearance of the campus, but also subtracts from the investment the college has made. **Please don't pick the flowers!**

## Meeting tomorrow to discuss resources for families at Lane

Staff who provide basic education, child care, counseling, referral and other services to student-parents at Lane are invited to share ideas for developing an ongoing group or task force for family issues and concerns. A meeting is scheduled for Tuesday, May 11, from 1:30-3:00 p.m. in the Board Room. A preliminary meeting of staff from many programs and several community agencies was held on April 20 to identify existing services and gaps or limits in services. Tomorrow's meeting will develop a structure for ongoing discussions and set goals. Contact Sarah LaMaster (ext. 2312) if you have questions.

## JOINT CLASSIFICATION STUDY

### Next hearings set

Job class specification open hearings on the following groups are scheduled for:

- May 11, 10-11 a.m. in the Board Room for Accounting, Grants, Research and Program Coordination.
- May 19, 9-10 a.m. in the Board Room for Office Support, Personnel, Purchasing, Telephone and Administrative Support.
- May 20, 3-4 p.m. in Forum 308 for Office Support, Personnel, Purchasing, Telephone and Administrative Support.

## International students sponsor annual banquet and performance

LCC international students cordially invite all students, staff and general public to attend their Third Annual International Night Banquet and Performance, Friday, May 14 at 6 p.m. in Lane's cafeteria with the performance following in the Performing Arts Theater. Tickets are available for \$8 to students and \$10 to staff and general public, Monday through Thursday, 8:30 a.m.-4:30 p.m. in Center 414.

## Reminder

Contracted classified evaluations and faculty performance evaluations are due in Personnel Services by June 1. For questions, contact Judy Ward in Personnel Services, ext. 2583.



### **Tomorrow is last day to purchase tickets for Korean Lunch**

Tuesday, May 11 is the last day to purchase tickets to the Korean lunch to be held Thursday, May 13, 12-noon in the northeast corner of the cafeteria. The lunch features Korean food and a guest speaker, Mr. Sueng-Be Park from Chinju, South Korea. Park will speak at 12:30 p.m. on the Korean educational system, the sequence of the Korean dynasties, the language and the formation of the country.

Tickets for the lunch are \$5. They can be purchased from Tom Reimer, ext. 2392, or Mary Forestieri, ext. 2481.

### **KLCC music sale**

KLCC will be selling thousands of records, cassettes and compact discs at ridiculously low prices on Thursday, May 13 and Friday, May 14 beginning at 10 a.m. in LCC's cafeteria. Records and cassettes will be sold for \$1 each and compact discs for \$4 each. Chose from jazz, rock, classical, pop and more. Come early. When the music is gone, the sale is over.

### **Caroline Estes of the Alpha Farm to speak**

Caroline Estes of the Alpha Farm near Mapleton, Oregon, will speak in Jerome Garger's Peace and Conflict Studies class on Tuesday, May 11, from 7:45-9:45 p.m. in Center 449. Her topic: "Community Building and Conflict Resolution." Guests welcome.

### **Faculty Council report**

At its April 22 meeting, Faculty Council heard about "Korea Week at LCC," scheduled for May 10-14. The event was organized by the LCC International/Intercultural Committee in an effort to raise staff awareness and knowledge of foreign cultures.

The Faculty Professional Development Team is conducting a study through interviews to determine how faculty can be served more effectively. Team member Cheryl Kempner, Study Skills, asked the Council for volunteers to assist with the interviews.

Council continued discussion on the faculty sick leave bank proposal, and LCCEA President Donald Micken reported the issue will be addressed in bargaining. Council also continued discussion on student evaluations of faculty. Beth Naylor reported a trial standardized form, which is being developed to meet new accreditation standards, should be ready for use this term. The committee is still asking for feedback from faculty and hopes to discuss the forms at the fall inservice.

Council's next meeting will be Thursday, May 13 from 3-4:30 p.m. in the Board Room.  
Submitted by Kimberly Buchanan for The Daily

### **Summer Youth Employment Program**

The Summer Youth Employment Program has youth available for jobs on campus for both morning and afternoon shifts. The program has a tentative start date of July 6, and will end August 20. To request a youth for your worksite, please fill out a Position Request Form which is available at the reception area in Personnel Services. If you have any questions, contact Carol Goldsberry, Personnel Services, ext. 2211.

### **Alcohol and substance abuse prevention presentation**

Spots are still available for the session on alcohol and substance abuse prevention at Lane. The session will be Wednesday, May 12, 1-4 p.m. in M&A 244. Contact Julie Baker, ext. 2199 to reserve a spot.

### **Call for banners, buttons and napkins**

If you have banners, buttons or napkins left over from the celebration of April is Community College Month, please return them to be recycled for next year. - Julie Baker, Institutional Advancement

---

#### **- ADS -**

FOR SALE: THREE-BEDROOM HOUSE on quiet street; family room; large yard with lots of flowers, fruit trees, garden. Orr Lane near City View. \$69,500. Susan Sutton, IA, ext. 2593 or 485-4053.

FOR SALE: ELECTRIC LAWNMOWER. One-year old. \$50. Susan Sutton, IA, ext. 2593 or 485-4053.

TRUCK STEREO SPEAKERS BOOMBOX with 15" power-speakers and tweeter horns. Near new. Sounds absolutely great but just a bit much for my little 2-door Tercel. And it scares the cows. \$150. Tom Birkenhead, Business Dept., ext. 2221 or 342-7583.

WANTED: Exchange Student needs one way AIRLINE TICKET to Washington, D.C. on or about July 19. Call if you have an unused ticket to sell. Pam McClelland, ELC, ext. 2459 or 726-7977.

FREE KITTENS: 2 cute black and white kittens, 6 weeks old. Used to kids, dogs, and already using litter box! Rich Freund, Counseling, ext. 2435.

FOR SALE: DINING TABLE, 2 leaves, 4 chairs; recliner; smoked glass stereo cabinet; Olympus camera and attachments. Maureen Rice, Family & Health Careers, ext. 2633 or 746-4450.

DEADLINE for The Daily is 12-noon of the working day prior to publication on Mondays, Tuesdays, Wednesdays, and Thursdays. Submissions must be made in writing and include first and last name, department, and extension number. This information is required to be printed with ads.



# The Daily

Guest Editor Angela Miller

Published for the staff of Lane Community College

747-4501, ext. 2591

Tuesday, May 11, 1993

Week 8 of Spring Term

## JOINT CLASSIFICATION STUDY

### Next hearings set

Job class specification open hearings on the following groups are scheduled for:

- Today, May 11, 10-11 a.m. in the Board Room for Accounting, Grants, Research and Program Coordination.
- May 19, 9-10 a.m. in the Board Room for Office Support, Personnel, Purchasing, Telephone and Administrative Support.
- May 20, 3-4 p.m. in Forum 308 for Office Support, Personnel, Purchasing, Telephone and Administrative Support.

### Call for nominations for Innovator of the Year Award

The League for Innovation in the Community College has created an award that is designed to recognize League College staff members who have designed and implemented a significant innovation during this past year. The recognition is known as the Innovator of the Year Award and is given annually to one individual from each of the 18 League member college districts. Any current Lane Community College employee, part-time or full-time, may be considered for the award. **The deadline for nominations is May 21.**

Nominations should be directed to League Representative, Larry Warford, Vice President for Community and Economic Development. If you have questions, contact Larry Warford at ext. 2120.

### Korean Week at LCC features lunch presentation by Mr. Rhew

Mr. Ki Won Rhew, President of PACINFO, a local business specializing in computer services and consulting in Oregon and South Korea, will speak Wednesday, May 12, 12-1 p.m. in the Board Room on "The Current Economic and Business Climate in South Korea and Possible Community College Involvements." Mr. Rhew was Volunteer of the Year for Lane County in 1989, serves as Treasurer for the Willamette International Trade Center, and is a past president of the Eugene-Chinju Sister City Committee.

Tickets may be purchased for \$5 from Mason Davis for the buffet luncheon which will be served from 12-12:30 p.m. Mr. Rhew's presentation and a question and answer session will follow. For information, contact Mason Davis, ext. 2239.

### Last call for management upward/peer evaluation forms

If you haven't yet returned the upward evaluation form on the manager to whom you report (or, in some cases, on another manager with whom you work) this is your last chance to do so. Remember, anonymity of response has been carefully built into the system. Remember, also, that without your response, the evaluation of that particular manager is incomplete. **Don't delay - do it today!** Responses must be delivered to Personnel Services by tomorrow, Wednesday, May 12. Deliver them in person, if necessary.

### To all classified and management staff

The RIGHT TO CONVERT and DEFINITION OF A MEMBER are amendments to the Standard Insurance Life Certificate. These have been sent through intercampus mail to each member of the bargaining unit for Classified and Management Staff. Please read and file these with your copy of the certificate. If you have not received a copy or have questions, please call Marie Nelson, ext. 2590.

### Call for art

The Women's Center is sponsoring a womens' student art show called "Healing through Art." Please encourage women students to submit pieces for the show. All mediums are welcome. There is a maximum of two submissions per artist. Pieces must be submitted with a short biography of the artist by Friday, May 14, 4 p.m. to the Women's Center. There will be an artists' reception Monday, May 17, 3-4:30 p.m. Everyone is welcome. For information, call the Women's Center, ext. 2353.

### Counseling Department Open House

The Counseling Department will host an open house Wednesday, May 12, from 2:30-4:30 p.m. to celebrate the completion of the remodel and to thank all the LCC and community folks who made it happen, the departments who provided temporary homes to the counseling staff and all the LCC students and staff who were inconvenienced by the noise and mess. There will be a short thank you program at 3 p.m.

### Results of the spring 2-mile run/walk

- Fastest time: male, Robert Thompson, 12.50 min.; female, Lorina Johnson, 16.11 min.
- Closest predicted time: male, Jerome Garger, 2 sec. off; female, Marianne Kimball, 19 sec. off



### **Questionnaire for students to evaluate faculty**

Because of student requests, in addition to a new accreditation standard, Faculty Council is developing a questionnaire for students to evaluate faculty. The questionnaire will be used college-wide at least once per year for each class taught. If you would like to give input, or would like a copy of a question and answer sheet about the form and the procedure (both of which are still in the development stage), contact Beth Naylor, ext. 2533, Shelley Gaudia, ext. 2446 or Patrick Torelle, ext. 2209.

### **Grants available for Innovative Projects for Community Service**

A new program from the Fund for the Improvement of Postsecondary Education (FIPSE) supports innovative projects of up to three years duration that encourage increased participation in community service. Community service should clearly benefit the community as well as the students; academic credit for service activities can be awarded. About 20 grants will be made nationwide, ranging from \$25,000 to \$75,000 annually. Deadline for proposals is June 15. Contact Sarah LaMaster, Grants Coordinator (ext. 2312) if you are interested in pursuing this grant opportunity.

### **Counseling Department closed for inservice**

Minimal services will be available in the Counseling and Advising Center Friday, May 14 due to inservice activities. The Career Information Center will be open from 9 a.m.-5 p.m.; the Testing and Assessment Center will be closed.

### **Job satisfaction survey**

Friday, May 14 is the last day to express what you think about your job. If you need another copy of the survey, please call Stephen Hamilton, ext. 2528. To the 225 who have already returned the survey, thank you for making this study a success.

### **Thanks**

Thanks to the following staff and departments who helped to make the All-Campus Career Fair such a success: Diane Dann, Jim Ellison and Linda Fossen for funding; Jim Brooks, Luci Edminster, Edna Grass, Gary McKenzie, Diane Morrow, Becky Newcombe, Shirley Perry and Donna Sanborn - Planning Committee; Sue Ferguson, Ed McManus, Garry Oldham, Chris Owen and Jack Powell for presentations; Food Services, Campus Services, Security and Electronic Services for their services. We appreciate all of you. - Joan Adams, Job Placement Office

### **Main campus Tai Chi class offered this summer**

If there are at least ten students, Continuing Education will run a beginning Tai Chi class on LCC main campus this summer (first 8 weeks), taught by veteran LCC instructor Don Hildenbrand. The class could meet Monday, Wednesday, Friday, 7-7:50 a.m. or during the lunch hour. The class would be held outdoors or, in bad weather, in the Blue Door Theatre, Performing Arts.

Tai Chi is an ancient Chinese mind-body exercise that is good for anyone's overall health. Hildenbrand is a gifted teacher, who tailors his instruction to each student's needs. For more information and to indicate your interest, call Dick Reid, ext. 2209.

---

#### **- JOBS -**

Secretary to the President; Management Support; closes 5-21-93

#### **- ADS -**

5TH ANNUAL WOMENSPACE AUCTION, Sunday, May 23 at Valley River Inn. For ticket information or to preview the catalog (over 600 great items), call Sue Thompson, H&PE, ext. 2552 or 689-4487. Help **Womenspace** work to stop domestic violence!

VISITING FEMALE PROFESSOR FROM ILLINOIS would like to housesit while in Eugene, July 26-August 14. Contact Joyce Salisbury, English Dept., ext. 2419 or 485-5483 (message).

ARE YOU HAVING PROBLEMS WITH YOUR WEIGHT? Come to DTC 309 at 4 p.m. on Thursdays. We are forming a support group for discussions, ideas, hints. There will be no scales, just discussions to help get through the weekends. - Reva Moen, ASN, ext. 2917

CHILDCARE - Child Development Center staff person with 12 years experience seeking full-time employment. (June 14-Sept. 10) Infant and toddler specialist. Karen Hall, F&HC, ext. 3076 or 461-0627.

RECREATIONAL TOURS, Spring Trips planned for a dinner cruise and lodging at the Lighthouse Inn in Florence (May 28-May 29) and for Cannon Beach (June 4-June 6). Register through Continuing Education. Call Guy for further information, 741-0675. - Lorna Funnell, Cont. Ed., ext. 2906.

FOR SALE: FOUR NEW TIRES mounted on steel wheels. Tires are size 14, 185, 70 series. Contact Vicki Levine, Study Skills, ext. 2074 or 345-8344.

'87 PONTIAC 6000LE, 4 cyl., 50,000 miles, AM/FM cassette, power steering, windows and locks, cruise, custom wheels, good condition, one owner, \$4500. Shannon Kracht, Cont. Ed., 741-1565.

DEADLINE for The Daily is 12-noon of the working day prior to publication on Mondays, Tuesdays, Wednesdays, and Thursdays. Submissions must be made in writing and include first and last name, department, and extension number. This information is required to be printed with ads.



# The Daily

Joan Aschim, Editor

Published for the staff of Lane Community College

747-4501, ext. 2591

Wednesday, May 12, 1993

Week 8 of Spring Term

## Today

- Ki Won Rhew will speak from 12-1 p.m. in the Board Room on economics and business in South Korea, as part of Korea Week activities.
- Management evaluation forms due to Personnel Services.
- Counseling Department open house, 2:30-4:30 p.m., including thank-you program at 3 p.m.
- Alcohol and substance abuse prevention workshop, 1-4 p.m., M&A 244.
- Classified Council meeting, 3-5 p.m., PE 205.
- LCC Budget Committee meeting, 6 p.m., Board Room.
- LCC Board of Education meeting, 7:30 p.m., Board Room (see below).

## Board agenda

The LCC Board of Education meets tonight at 7:30 p.m. in the Board Room. Staff reports will be presented on the Eugene 1993 Air Show, diversity activities, and the heating/cooling system. Action items include acknowledging the retirements of Roland Meyer from Mechanical Technologies and Shirley Pearson from the President's Office; bid award for canopy roof and skylight replacements to Umpqua Roofing; approval of ASLCC election results; and approval of calling for bids for avionics training lab equipment and to proceed with plans to construct a new return-to-service hanger. Discussion will be held on the investment opportunities program.

## Faculty Council agenda

Faculty Council will meet Thursday, May 13, from 3-4:30 p.m. in the Board Room. Up for action or discussion are faculty computer usage, Faculty Council rep to College Council, Weekend College concept, and student evaluations of faculty.

## High school viewpoint offered

The High School Relations Advisory Committee will meet on main campus on Wednesday, May 19, from 2:30-4 p.m. If you'd like the high school perspective of your program, service or department, please contact Shan Titus at ext. 2688 by May 17 to add discussion items to the meeting agenda. This is a good opportunity to get feedback, information or advice from a cross-section of district high school counselors.

## Sharon Moore elected to national cooperative education post

Sharon Moore, Cooperative Education coordinator, was elected as Regional Education Representative for the Pacific Coast at the national Cooperative Education Association Conference in Newport, Rhode Island, held March 21-23.

## Speakers

- Lauren Holland, Lane County district court judge, will speak to Steve Candee's State & Local Government classes on Wednesday, May 19, from 1-2 p.m. and 2-3 p.m., in Center 401.
  - Mike Gleason, Eugene city manager, will speak to Steve Candee's State & Local Government classes on Friday, May 28, from 1-2 p.m. and 2-3 p.m., in Center 401.
- Guests are welcome at both events.

## Room change

"A Wagon Train Menu: Food Supplies and Preparation Along the Oregon Trail," will be held in Forum 307 (not Forum 309) on Friday, May 21, from 12-1 p.m.

## Staff get oriented

A new employee orientation was conducted for this group on Feb. 25. Some of these folks have been at Lane awhile but are newly contracted. Group orientations are held about three times a year.



Pictured from left to right, **front row:** Susan Thornton, Family & Health Careers; Addie Lou Willis, Social Science; Leslie Ulrich, Student Health Services; Kathryn Reid, Student Health Services; Peggy Sherman-Hill, Flight Technology; Susan Carlile, Flight Technology. **Back row:** Angela Miller, Institutional Advancement; Cindy Veldhuis, Women's Program; Kingsley Povenmire, Flight Technology; Linda Pompel, Family & Health Careers; John Lloyd, Training & Development; Robert Patterson, LCC at Florence; Sharon Svetich, Training & Development; Gayle Chisholm, KLCC; Michael Zimmerman, Child Development Center.



### Funds available

Faculty professional activities funding still is available. Proposals for June, July, August and September should be submitted by May 28. For guidelines and application forms, contact Roxanne Flowerday or Pat John in Study Skills at ext. 2439.

### Raffle tickets available

A raffle to benefit Campus Ministry will be held June 4 in the Cafeteria. Tickets for \$2 are on sale now at the ministry in Center 242. Over \$5,000 worth of prizes have been donated. For example:

- ♥ One night for two people at the Westfir Lodge
- ♥ A heavenly chocolate almond tort from Rev. Adele Hustis

### Upcoming conferences

- "Cultural Diversity in the 90's," Willamette University, May 20 & 21, \$65.
- "Promoting Health and Fitness Among Older Adults: A Challenge for Health Professionals," Portland, May 26 & 27, \$200.
- "Higher Education and Workforce Development," June 16-18, New York, \$345.
- National Seminar for Master Teachers, "Focus: Improved Teaching," Massachusetts, July 11-15, \$595, Preconference: "The Write Weekend," \$150.
- 8th Annual Assessment Conference and the 1st Continuous Quality Improvement Conference," June 9-12, Chicago, \$265.

Contact Julie Baker ext. 2199 for more information.

### Help appreciated

When paying your bills this month, please remember to send a dollar to the Corinne Meehan Insurance Fund. Corinne recently had hip replacement surgery and isn't expected to return to work before July. Since she is on disability, she must pay her own insurance premium each month until she returns to work. You may send your contribution to Julie Baker, I.A. Thank you!

---

#### - ADS -

FOR RENT: 1-bedroom apartment attached to my South Eugene home. New kitchen and bathroom, luxuriously carpeted, patio, yard, garden space to share. \$400/month. First, last, deposit. Lease available. Call Enid Leonard, Study Skills, ext. 2075, or 686-4318.

FOR SALE: 1984 HONDA CIVIC 2-door + hatchback. 50,000 miles, original owner, all service records available. Excellent condition. \$2,800. Please call Sharon Thomas evenings at 747-1623. (Student Service Associate, Counseling, exts. 2802/2297.)

1981 CHEVETTE: 4-speed, 4-door hatchback. Excellent condition inside and out. Everything works. Air, AM/FM cassette stereo. New tires, clutch, master cylinder and rear brakes. Good gas mileage. \$850. Maryanne Graham, Athletics, ext. 2293, or 344-8648.

FOR RENT STARTING JUNE: Very nice detached 1-bedroom apartment on second floor. Private outside entrance. No smoking. Shower only. \$375/month includes a first-floor washer & dryer hookup and separate storage room. Drive by 1220 Tyler Street and call Alice Kaseberg, Math, ext. 2392, or 345-7836 evenings.

YOUR BEST OFFER: Americana Yearbooks (1955-78), also an older set of Americana Encyclopedia. Also fiction of many genres (new to us) at our usual low prices of \$.50 paperbound and \$1 hardbound. The Library.

WANT TO RENT, BORROW OR BUY a car-top bicycle rack. Jan Kleminsky, Computer Services, ext. 2865 'til 12:30; 747-2259 after 1 p.m.

5TH ANNUAL WOMENSPACE AUCTION, Sunday, May 23 at Valley River Inn. For ticket information or to preview the catalog (over 600 great items), call Sue Thompson, H&PE, ext. 2552 or 689-4487. Help Womenspace work to stop domestic violence!

VISITING FEMALE PROFESSOR FROM ILLINOIS would like to housesit while in Eugene, July 26-August 14. Contact Joyce Salisbury, English Dept., ext. 2419 or 485-5483 (message).

ARE YOU HAVING PROBLEMS WITH YOUR WEIGHT? Come to DTC 309 at 4 p.m. on Thursdays. We are forming a support group for discussions, ideas, hints. There will be no scales, just discussions to help get through the weekends. - Reva Moen, ASN, ext. 2917

CHILDCARE - Child Development Center staff person with 12 years experience seeking full-time employment. (June 14-Sept. 10) Infant and toddler specialist. Karen Hall, F&HC, ext. 3076 or 461-0627.

RECREATIONAL TOURS, Spring Trips planned for a dinner cruise and lodging at the Lighthouse Inn in Florence (May 28-May 29) and for Cannon Beach (June 4-June 6). Register through Continuing Education. Call Guy for further information, 741-0675. - Lorna Funnell, Cont. Ed., ext. 2906.

FOR SALE: FOUR NEW TIRES mounted on steel wheels. Tires are size 14, 185, 70 series. Contact Vicki Levine, Study Skills, ext. 2074 or 345-8344.

'87 PONTIAC 6000LE, 4 cyl., 50,000 miles, AM/FM cassette, power steering, windows and locks, cruise, custom wheels, good condition, one owner, \$4500. Shannon Kracht, Cont. Ed., 741-1565.

DEADLINE for The Daily is 12-noon of the working day prior to publication on Mondays, Tuesdays, Wednesdays, and Thursdays. Submissions must be made in writing and include first and last name, department, and extension number. This information is required to be printed with ads.



# The Daily

Joan Aschim, Editor

Published for the staff of Lane Community College

747-4501, ext. 2591

Thursday, May 13, 1993

Week 8 of Spring Term

## Today and Friday

- Annual employee reception, today, 3-5 p.m., Cafeteria.
- Faculty Council meeting, today, 3-4:30 p.m., Board Room.
- KLCC/KLCO music sale, today and Friday, 10 a.m., Cafeteria.
- Counseling closed Friday, Career Information Center open, Testing closed.
- "Healing through Art" submission deadline, Friday, Women's Center.
- International Night, Friday, 6 p.m., Cafeteria, performance following in Performing Arts Theater.
- Manager's Forum, Friday, 8:30 a.m., Forum 309.
- Management personal and professional development applications due Friday contact Lloyd Rain.

## Automotive program awarded prestigious certification

Lane's automotive program has received certification of excellence from the National Automotive Technicians Education Foundation and the National Institute for Automotive Service Excellence. Industrial Technology Department Chair Carl Horstrup says foundation and institute representatives visited Lane recently to evaluate its instruction, curriculum, facilities, and equipment. He says this is the first time the automotive program has received this certification. Excellence was noted in automatic transmission/transaxle, brakes, electrical systems, engine performance, engine repair, heating and air conditioning, manual drive train and axles, and suspension and steering.

## Business Department to honor students of the year

The Business Department annually selects two students of the year. This year's winners are Peggy Buck and Harvey Epperson. Buck received the Office Administration award. She is an accounting major. Epperson received the Wall Street Journal award and a free one-year subscription. He is a business management major.

The students were chosen for their academic excellence, supervised field experience, second-year standing, as well as their sense of commitment, positive attitudes, and general behaviors that impressed their instructor nominators. The nominations were made winter term.

Many students were qualified and nominated and the decision was difficult. An informal awards ceremony will be conducted in President Moskus' office on Wednesday, May 19, at 2:30 p.m. Friends, family, faculty and staff are invited to attend the short presentation and the following reception.

## Former counselor to present at UO

Steve Hanamura, former LCC counselor, will conduct a one-day seminar on "Managing Diversity in the Workplace" at the UO on Friday, May 21, at the Earle A. Chiles Business Center, 925 E. 13th Avenue. Hanamura is the president of seven-year-old Hanamura Consulting of Portland.

## TTT

Teachers Talking about Teaching with Cooperative Learning Structures: Come to a professional development activity on Tuesday, May 18, from 3-4:30 p.m. in Center 8, to find out how other teachers use cooperative learning structures in the classroom. We will learn by participation in various structures and will receive handouts from each presenter. If you use cooperative learning structures, please be willing to share yours by preparing a brief handout explaining the structure and its use. We are counting on interaction and sharing and will enjoy goodies from the Renaissance Room.

## Korean exhibit on mezzanine

Artifacts from Korea are available for viewing on the Library mezzanine through May 17. The display, sponsored by the International/Intercultural Committee to heighten campus awareness of Korea, features articles brought from Korea by Margo Ramsing, member of the Korean sister city organization. Articles about Korea have been placed on reserve in the Library under the category International/Intercultural Committee. For a complete list, contact Julie Baker, ext. 2199.

## Gregorc Handouts Available

Copies of the Gregorc categories presented by Marti Ayers-Stewart at the May 4 session on learning styles have been sent to all attendees. If for some reason you did not receive a copy, please contact Julie Baker, ext. 2199.

## Cuantos hombre nos ayudaron en el kiosco de LCC en el dia de la Fiesta Latina?\*

Muchas gracias to the dynamic team of staff who worked hard at Lane's booth and did a great job of representing our college at last week's Fiesta Latina in Eugene: Joan Adams, Joyce Garibay, Beth Webb, Ann Noble, Evelyn Nagy, Carol Woodman (and friend), Diane Morrow, Linda Allen, and Kay King (and daughter). Equal thanks and mucho appreciation also goes to: Sandy Young, Randy Lindstrom, Barb Delansky, Tom Amabisca, Angela Miller and Bob Githens for their before-and-after assistance! - Luci Edminster, Cooperative Education \*(Respuesta al pregunta: cero.)



## Doing us proud

The annual reception for 10-year, 20-year, 25-year and retiring employees is today at 3 p.m. in the Cafeteria. Employees are recognized by hire date with continuous service to Lane, in a .50 FTE or greater bargaining unit position. One-year layoffs/recall and paid approved leaves of absence do not constitute a break in service but also do not count as months of service. Volunteer terminations do count as a break in service. Anniversary date is calculated on a calendar year: Jan. 1-Dec. 31, 1993. Retirement date is on a fiscal year basis: July 1, 1992-June 30, 1993. For more information, contact Personnel Services.

### 10-Year Employees

Jerene Adler  
Julie Baker  
Carrol Barton  
William Burrows  
Connie Clark  
Diane Engle  
Robert Githens  
Lola Hart  
Cherrill Hemminger  
Rita Hennessy  
Gary Knapp  
Kay King  
Patricia Lake  
Julianna Leonard  
C. Fred Meyer II  
Elizabeth Paul  
Michael Palandri  
Richard Robillard  
Ronald Rourke  
Gordon Scott  
John Steel  
Lynne Swift  
Laura Tamura  
Kristi Tupper  
Dorothy Wearne  
Keiichiro Ysauda  
Joyce Young

Cheryl Coleman  
Linda Danielson  
Carmel Decroos  
Bob Farrand  
May Fogg  
Joe Freeman  
Edna Jellesed  
Pat John  
Billy Jones  
Joyce Kommer  
Debra Lamb  
Ronald Lindsay  
Linda Loft  
Dixie Maurer  
Robert Nelson  
Linda Riepe  
John Robert  
Kurt Schultz  
Craig Spilman  
Jean Spriggs  
Leroy Summers  
Sue Thompson  
Sharon Wendell  
Daniel White  
Donald James Wilson

Gregory Delf  
Richard Eno  
Nancy C. Jaques  
Stephen John  
Jay Marston  
Roland Meyer  
Roy Mullin  
Shirley Pearson  
Wendell Pepperdine  
Jack Powell  
Audrey Razmus  
Thomas Reimer  
David Roof  
Kathryn Seymour  
Gerald Sirois  
Cherry Taylor  
Winnaferd Westfall  
Rosco Wright

### 25-Year Employees

Ruth Albrecht  
Charlene Blinn  
Richard Coalwell  
James Walter Cox  
Bruce Dean

### 20 Year Employees

Thomas Baker  
Rosemary Busby

### Retirees

Rose Arnold  
Lori Bell  
William Buskirk  
Richard Coalwell  
Dallas Haverland  
Wayte Kirchner  
Joyce Kofford-Williams  
Roland Meyer  
Shirley Pearson  
Jack Shadwick  
Shermaine Swearingen  
Robert Tegge

---

### - ADS -

FOR SALE: \$105 cheap for an old bucket. This 1969 4-door Dodge was once at the Presidio; now you can see it at 2430 Jackson. To negotiate, call Nick at 342-4817, or leave message with Lorna Funnell, Cont. Ed., ext. 2906.

FOR SALE: Orange flowered couch and loveseat set. Well used but will make a good starter set, \$50. Call Ronda Hatefi at Family & Health Careers at ext. 3076.

1981 TOYOTA Corolla Tercel, excellent condition, mechanically sound, \$2,000, available about May 30. Contact Nancy Bell, ext. 2347, Financial Aid.

FOR SALE: '79 DATSUN 280ZX, bronze, runs strong, dependable. \$1,950 OBO. Linda Mooney, Adult High School, ext. 2214; home 933-2511.

FOR RENT: 1-bedroom apartment attached to my South Eugene home. New kitchen and bathroom, luxuriously carpeted, patio, yard, garden space to share. \$400/month. First, last, deposit. Lease available. Call Enid Leonard, Study Skills, ext. 2075, or 686-4318.

FOR SALE: 1984 HONDA CIVIC 2-door + hatchback. 50,000 miles, original owner, all service records available. Excellent condition. \$2,800. Please call Sharon Thomas evenings at 747-1623. (Student Service Associate, Counseling, exts. 2802/2297.)

1981 CHEVETTE: 4-speed, 4-door hatchback. Excellent condition inside and out. Everything works. Air, AM/FM cassette stereo. New tires, clutch, master cylinder and rear brakes. Good gas mileage. \$850. Maryanne Graham, Athletics, ext. 2293, or 344-8648.

FOR RENT STARTING JUNE: Very nice detached 1-bedroom apartment on second floor. Private outside entrance. No smoking. Shower only. \$375/month includes a first-floor washer & dryer hookup and separate storage room. Drive by 1220 Tyler Street and call Alice Kaseberg, Math, ext. 2392, or 345-7836 evenings.

WANT TO RENT, BORROW OR BUY a car-top bicycle rack. Jan Kleminsky, Computer Services, ext. 2865 'til 12:30; 747-2259 after 1 p.m.

DEADLINE for The Daily is 12-noon of the working day prior to publication on Mondays, Tuesdays, Wednesdays, and Thursdays. Submissions must be made in writing and include first and last name, department, and extension number. This information is required to be printed with ads.



# The Daily

Joan Aschim, Editor

Published for the staff of Lane Community College

747-4501, ext. 2591

Monday, May 17, 1993

Week 8 of Spring Term

## Meetings this week

- Administrative Services managers, Tuesday, May 18, 8:30-10 a.m., President's Office. For details call ext. 2311.
- CED Cabinet, today, May 17, 1:30-3:30 p.m., Board Room. For information contact Debbie Powers, ext. 2120.
- College Council, Tuesday, May 18, 3-5 p.m., Board Room. For information call Marie Matsen, ext. 2313. (See agenda below.)
- Instructional Cabinet, Wednesday, May 19, 1:30-3 p.m., Board Room. For information call Marianne Kimball, ext. 2306.
- Student Services directors, Wednesday, May 19, 9 a.m.-12 p.m., Admin. 206. For information call Miriam Thompson, ext. 2315.

## Annual juried student art show opens today

The annual juried student art show opens today in the Art Department Gallery. A reception and awards ceremony will be held on Wednesday, May 19, at 1 p.m.

## Business students to be honored

An informal awards ceremony will be held for the Business Department's students of the year on Wednesday, May 19, at 2:30 p.m., in President Moskus' office. Friends, family, faculty and staff are invited to attend the short presentation and following reception. The department selects two top students each year. This year, accounting major Peggy Buck won the Office Administration award. Business management major Harvey Epperson won the Wall Street Journal award and a one-year subscription.

## College Council agenda

College Council meets tomorrow from 3-5 p.m. in the Board Room. Agenda highlights: investment opportunity proposals, college restructuring, college vision statement, council membership for 1993-94, and budget criteria and process for 1994-95.

## Jan Yriarte named outstanding employee



*President Jerry Moskus (right) and H&PE Dept. Chair Bob Creed congratulate Jan Yriarte.*

Jan Yriarte, department secretary for Health and Physical Education, was named Outstanding Classified Employee of the Month for May. Said her nominators: "Jan consistently provides intelligent, efficient and friendly support to all students and staff." "One only has to pass by the department to see the creativity, initiative and enthusiasm Jan demonstrates!" She "never is stressed even in the most stressful situations." "Jan not only solves problems, but she anticipates potential problems..." "Working with Jan is like working with a friend..." "I can't say enough good things about Jan."

Yriarte has worked in H&PE since 1985. From 1970-72 she worked in Campus Services and then left to have children. She and husband Harland have nine children ages 9 to 25. "It keeps me busy but not out of trouble," she says.

As employee of the month, Yriarte won a certificate, mug, lunch with the president, and a special parking place. Her portrait will be posted on the LCCEF bulletin board in the Cafeteria during May.

## Second call for proposals

The Faculty Professional Development Team's second call for mini-grant proposals for projects that will stimulate and enhance the quality of teaching and learning at LCC have been distributed to individual departments. Proposal deadline is Monday, May 24 and funding notification will occur by June 7. If you would like a proposal and have not received one, please contact Julie Baker, ext. 2199.

## Caroline Estes of Alpha Farm rescheduled

Caroline Estes of Alpha Farm, an intentional community in Deadwood, has rescheduled her presentation, "Community Building and Conflict Resolution," to Tuesday, May 18, from 7:45-9:45 p.m. in Center 449, in Jerome Garger's Peace and Conflict Studies class. Guests welcome.

## Free seminar offered

"Brittle Bones: Preventing Osteoporosis" will be offered by Sacred Heart General Hospital on Tuesday, May 18 from 7:30-9 p.m. at the Eugene Hilton. For details call 686-7272.



### **Diversity series takes a look at the media**

The Issues in Cultural Diversity seminar series examines "Diversity and the Media" on Tuesday, May 18, from 3-4:30 p.m. and 5:30-7 p.m. in Apprenticeship 216. The seminars may be taken for credit or audit. For more information call Vicki Levine at ext. 2074.

### **Let's golf**

- The 11th annual LCC golf scramble sponsored by Northwest Natural Gas will be held Monday, June 14, with a 1 p.m. shotgun start at the Eugene Country Club. Proceeds go to the LCC Foundation. To sign up, call ext. 2810.
- Mondays at 4 p.m. have been reserved at Laurelwood Golf Course for a friendly round beginning today. This is for fun. Let me know if you're interested, but last-minute golfers are welcome to show up. - Linda Wong, Study Skills, ext. 2444

### **Thanks from Student Health**

The staff of Student Health Services offers the most sincere thank-you to everyone who supported our service during the elections. We thank you for your encouragement to us prior to the elections and your enthusiasm after. Without your support we would be gone.

### **Thanks from Shirley Perry**

I wish to thank all my LCC friends & co-workers for their support, help, cards and get well wishes during my recovery period for a broken leg these past seven weeks. I am back to work now and getting around slowly, and it's wonderful to see you all again. - Shirley Perry

### **All-staff 50s-60s sock hop was a "cool" success**

Hey, all you "squares" who did not attend the sock hop on May 8--you missed a great party! Jivin' Johnny Etheredge provided a steady flow of dance tunes, Nancy Anderson taught us the Stroll, Julie Watson from Foodservices operated the snack bar with terrific service, and James Dean made a special appearance. Prizes for best costumes went to Linda Fossen (loved your poodle skirt), Kim Leeds and Wayne Dawson (great costumes and car) and Julie Watson (straight from the diner)! Other contest winners were: Bubble Gum contest, Dave Courtney and Cindy Farmer; Hoola Hoop contest, Kristen Courtney and Roger McClelland; Wildest Socks, Jeed Chaiboonruang and Gloria Jarvis; and Name Game Contest, Maxine Frauman. Many thanks to the 50s-60s Sock Hop Committee members who worked hard to make the dance a lively, fun evening: Terry Caron, Jeed Chaiboonruang, Sarah LaMaster, Kim Leeds, Sharon McCarroll, Linda Myers, Nancy Oster-Courtney, and Dale Schaper (sorry you couldn't be there, Dale). The committee also wishes to thank the following people for their help with decorating: Kristin Courtney, Dennis LaMaster, Roberta Opdenweyer, Chuck Reid, Michael Ridderbusch, and Bob Vogel. Thanks also to the many people who helped with clean up, to Institutional Advancement for technical assistance with the balloons and flyer, and to Harland Yriarte for storage space for decorations and the loan of hoola hoops. - Linda Myers, Cooperative Education, ext. 2883

---

#### **- ADS -**

**LOST AND FOUND.** A small heart-shaped locket was found in the Gym after the all-staff sock-hop Saturday, May 8. Please contact Sarah LaMaster, Institutional Advancement, ADM. 209, ext. 2312, to identify and reclaim your locket.

**QUEEN SIZE FOR SALE:** Ethan Allen Maple finish hutch \$200 and Hide-A-Bed/light yellow print \$100. Both in excellent condition. Marie Nelson, Personnel Services, ext. 2590, or at home 686-2676.

**1982 VW RABBIT FOR SALE.** Very reliable, gets excellent gas mileage, new tires, new clutch, new brakes and much more so call now! Asking \$1,600 OBO. Melanie Martin ext. 2545 or 683-3623.

**CAMERA FOR SALE:** 35mm X-370 Minolta camera, 50mm 1:1.7 Lens, Minolta 135mm 1:3.5 Lens, Minolta Vivitar 2800-D Auto Thristor flash, camera bag S-100. Asking \$300 even. Melanie Martin ext. 2545 or 683-3623.

**DO YOU NEED** your lawn mowed, and/or some landscaping? Call Student Service Associate Brian Gunarathne, 726-5412, or leave message at Career Info. Center, ext. 2297.

**WANTED TO BUY:** Riding lawnmower, good condition, reasonable. Laura Roberts, Student Health, ext. 2665, or 689-5868 after 6 p.m.

**FOR SALE:** (1) Schwinn bicycle, Mesa Runner, 18-inch, good condition, \$150. (2) Ski racks, previously used on Mazda RX7, \$50. Contact Vicki Thompson, ABE/DTC, ext. 2912, and leave message.

**YOUNG WOMAN** with child needs roommate, preferably another woman. Call Jeannie Peterson, T&D, ext. 2860.

**REDUCED:** '81 Honda accord. 4-door, automatic, air, 106,000 miles, AM/FM cassette, Yakima rack with bike carrier. Great shape in and out. Well worth a look at \$1,850 OBO. Ron or Karol Rourke, SES, exts. 2100 or 2103.

**JENN-AIRE** stove/oven, 12 years old, with accessories, \$175. Woman's leather jacket, size 11/12, never worn, \$75. Sharon Jelinek, ext. 2066.

**FOR RENT:** Newer 2-bedroom house at 1904 Arthur. Large sunny rooms, large yard, dishwasher, washer/dryer hook-ups, \$600 plus \$250 deposit. Call Barbara Meininger, ext. 2017, or 343-2664.

**DEADLINE** for The Daily is 12-noon of the working day prior to publication on Mondays, Tuesdays, Wednesdays, and Thursdays. Submissions must be made in writing and include first and last name, department, and extension number. This information is required to be printed with ads.



# The Daily

Joan Aschim, Editor

Published for the staff of Lane Community College

747-4501, ext. 2591

Tuesday, May 18, 1993

Week 8 of Spring Term

## Today

- Administrative Services managers meeting, 8:30-10 a.m., President's Office.
- College Council, 3-5 p.m., Board Room.
- Caroline Estes lecture, 7:45-9:45 p.m., Center 449.
- Diversity and the Media seminar, 3-4:30 p.m. and 5:30-7 p.m., Apprenticeship 216.
- TTT: Teachers Talking about Teaching/Cooperative Learning Structures, 3-4:30 p.m., Center 8.

## JOINT CLASSIFICATION STUDY

## Hearings tomorrow

Job class specification open hearings are scheduled for office support, personnel, purchasing, and telephone and administrative support, on May 19, 9-10 a.m. in the Board Room; and May 20, 3-4 p.m. in Forum 308.

## Office supplies purchasing system to be explained

Purchasing Services and Boise Cascade Office Supply representatives will hold an orientation to describe the office supplies purchasing system in use at the college, on Wednesday, May 19, at 10 a.m. in PE 205; and again on Wednesday, May 26, at 2 p.m. in PE 205. Bring your questions and concerns.

## Instructional support staff to meet

Instructional support staff will meet Thursday, May 20, at 3 p.m. in the Social Science lounge. The agenda includes DERs and year-end close. - Pam McClelland, Electronics, ext. 2459

## Foodservices announcements

- Foodservices announces Thursday, May 20, as "Coffee Drinkers Appreciation Day." Free eight-ounce cups of coffee will be served all day, with free refillable souvenir mugs to the first 200 customers. LCC coffee is fresh ground, fresh brewed, and fresh to you, says manager Jim Wychules.
- Foodservices is conducting an end-of-term equipment round-up. Please bring any and all trays, plates, bowls, silverware and other cafeteria items that may be in your workplace back to the cafeteria for cleaning and recycling. Thank you.

## Insurance reminder

For faster, more efficient and accurate processing of insurance claims, carry your identification card with you at all times. You will need the group number and ID number (social security number) from that card in the doctor's office and hospital when filling out insurance papers. If you have lost or misplaced your card, call Marie Nelson in Personnel Services at ext. 2590. She can arrange for a replacement.

## Pay change requests available

Faculty: If you wish to change your existing pay plan for the 1993-94 fiscal year, you must fill out a faculty pay plan change request form and return it to Personnel Services no later than July 1. Forms are available in Personnel. - Judy Ward, ext. 2583

## Wooten to speak

Cynthia Wooten, representative from District 41, will speak to Steve Candee's State & Local Government classes on Monday, May 24, from 1-2 p.m. and 2-3 p.m. in Center 402. Guests welcome.

## Student loan exit interviews scheduled

Federal regulations require that students receiving a Stafford Student Loan or SLS Loan while attending Lane must attend an exit interview during their last term of attendance. The exit interview outlines financial planning, disclosure statements, repayment procedures, how to correspond with the lender, secondary markets, loan consolidation, options for making payments, and the consequences of default. Interviews are set for Thursday, May 27, at 10 a.m. in Forum 309, and at 2 p.m. and 6 p.m. in Forum 308; and on Friday, May 28, 9 a.m., 1 p.m., and 4 p.m., Forum 308.

## Last chance to sign up for Tai Chi class

Anyone interested in a beginning Tai Chi class on main campus for the first eight weeks of summer term should contact Dick Reid at ext. 2209. The proposed class could meet Monday, Wednesday, Friday, 7-7:50 a.m. or during the lunch hour. The class would be held outdoors or, in bad weather, in the Blue Door Theater. The instructor would be Don Hildenbrand.

## Book donations wanted

Have you overlooked some books marooned in your work nook? The Library is sponsoring a sale June 1 and 2 from 10 a.m. to 2 p.m. in the Center Building second floor lobby. Your discards are needed. Profits go to buy new books for the collection. Thanks for considering us! - Library



### **Basketball camp taking reservations**

Jim Boutin's basketball camp will be offered again this summer for boys and girls age 8 to 18. The camp features basketball fundamentals and games. It will be held August 2-6 from 8 a.m. to 5 p.m. with lunch provided. Cost is \$110. Campers receive a T-shirt. Informational brochures are available from Sharon Foster, Athletics, ext. 2215.

### **League schedules focus groups**

In a follow-up to the national study on workforce training, the League for Innovation in the Community College is conducting, in cooperation with the American Association of Community Colleges, seven regional focus groups on workforce training. The purpose of the focus groups is to react to and revise a draft position paper on the role of community colleges in workforce training. The focus groups are being hosted by Lane Community College and five other community colleges. The position paper is being developed by the League for the American Association of Community Colleges for release on July 21 as the ending event for "Leadership 2000".

### **Flea market**

Student Activities will host an outdoor flea market this Saturday, May 22, from 8 a.m. to 3 p.m. in the northwest parking lot by the child care co-op. Sellers should arrive between 7-8 a.m. Parking space for sellers is \$5. Sell out of your car or bring your own table. Garage sale items, crafts, antiques and collectibles are welcome. Great stuff! Don't miss it. For more info, call ext. 2336.

### **Call for presentations**

The League for Innovation in the Community College calls for presentations for the 1994 conference on "Community Colleges and Business and Industry: Partners in Developing a Quality Workforce." It will be held in New Orleans, Louisiana, from Jan. 30-Feb. 2. For a copy of presentation guidelines, contact the Office of Community and Economic Development at ext. 2120.

### **Reception thanks**

Thank you to all those who helped at the May 13 employee recognition reception. All of your hard work was greatly appreciated, as well as the donations of beautiful flowers. - President's Office

### **Thanks**

Thanks to Bob Cramblit of Campus Services for fixing the north door in the lower level of the PE building. Weeks have gone by and it's still working, thanks to Bob! - Debbie Daggett

---

#### **- ADS -**

1981 TOYOTA Corolla Tercel, 104,000 miles, excellent condition, mechanically sound, \$1,800, available about May 30. Contact Nancy Bell, ext. 2347, Financial Aid.

FOR SALE: 4 STEEL WHEELS, 14", \$17 apiece or all 4 for \$50. Vicki Levine, Soc. Sci., ext. 2074, or 345-8344.

CHILDCARE - Child Development Center staff person with 12 years experience seeking full-time employment. (June 14-Sept. 10) Infant and toddler specialist. Karen Hall, F&HC, ext. 3076 or 461-0627.

FOR SALE: 2 PLAY STRUCTURES. One 4'x6' wooden structure with slide and fire pole; and one sturdy modular Quadro set. Each \$40 OBO. Peg Allison, BDC, ext. 2923.

WANTED: FISHING TIPS. Since I'm relatively new to Oregon, I am in need of advice about where to take my 12-year-old son fishing (especially Eugene area). Please send your suggestions for proper rigging and good fishing holes to Linda Fossen, Office of Student Services, ext. 2314.

FOR SALE: Ethan Allen Maple finish hutch, \$200; and queen-size Hide-A-Bed/light yellow print, \$100. Both in excellent condition. Marie Nelson, Personnel Services, ext. 2590, or at home 686-2676.

1982 VW RABBIT FOR SALE. Very reliable, gets excellent gas mileage, new tires, new clutch, new brakes and much more so call now! Asking \$1,600 OBO. Melanie Martin ext. 2545 or 683-3623.

CAMERA FOR SALE: 35mm X-370 Minolta camera, 50mm 1:1.7 Lens, Minolta 135mm 1:3.5 Lens, Minolta Vivitar 2800-D Auto Thristor flash, camera bag S-100. Asking \$300 even. Melanie Martin ext. 2545 or 683-3623.

DO YOU NEED your lawn mowed, and/or some landscaping? Call Student Service Associate Brian Gunarathne, 726-5412, or leave message at Career Info. Center, ext. 2297.

WANTED TO BUY: Riding lawnmower, good condition, reasonable. Laura Roberts, Student Health, ext. 2665, or 689-5868 after 6 p.m.

FOR SALE: (1) Schwinn bicycle, Mesa Runner, 18-inch, good condition, \$150. (2) Ski racks, previously used on Mazda RX7, \$50. Contact Vicki Thompson, ABE/DTC, ext. 2912, and leave message.

YOUNG WOMAN with child needs roommate, preferably another woman. Call Jeannie Peterson, T&D, ext. 2860.

REDUCED: '81 Honda accord. 4-door, automatic, air, 106,000 miles, AM/FM cassette, Yakima rack with bike carrier. Great shape in and out. Well worth a look at \$1,850 OBO. Ron or Karol Rourke, SES, exts. 2100 or 2103.

DEADLINE for The Daily is 12-noon of the working day prior to publication on Mondays, Tuesdays, Wednesdays, and Thursdays. Submissions must be made in writing and include first and last name, department, and extension number. This information is required to be printed with ads.



# The Daily

Joan Aschim, Editor

Published for the staff of Lane Community College

747-4501, ext. 2591

Wednesday, May 19, 1993

Week 8 of Spring Term

## Today

- Instructional Cabinet, 1:30-3 p.m., Board Room.
- Student Services directors, 9 a.m.-12 p.m., Admin. 206.
- High School Relations Advisory Committee meeting, 2:30-4 p.m. Call Shan Titus at ext. 2688.
- Lauren Holland, lecture, 1-2 p.m. and 2-3 p.m., **Center 402**.
- Job class specification open hearings, 9-10 a.m., Board Room; for office support, personnel, purchasing, telephone and administrative support.

## Facilities committee to meet

The Facilities Management Committee will meet on Thursday, May 20, at 3 p.m. in the Board Room. Topics on the agenda include furnishings for Apr. 216, ASLCC child care co-op expansion, avionics training lab, policy on food and drink in the classroom, and construction priorities. All interested students and staff are invited to attend.

## Tip for 1993-94

Contracted and continuing part-time instructors are invited to participate during the 1993-94 academic year in Lane's term-long Teaching Improvement Process (TIP). You will be observed and will consult with a non-threatening trained consultant, be videotaped, receive a computerized analysis of student responses to your class, and get many new ideas. Apply by calling Sharon Thomas, ext. 2145.

## Wagon train menu to be described

A presentation of food supplies and cooking methods from Oregon Trail days will be given Friday, May 21, from 12-1 p.m. in Forum 307. LCC nutritional anthropologists Beth Naylor, Loretta Plaa and Linda Pompel will provide a nutritional analysis of the pioneer diet and other information.

## Phi Theta Kappa seeks advisor

Phi Theta Kappa, the honor society for two-year schools, seeks an advisor to work with members in various activities. Funds will be provided for the advisor to attend regional and national PTK conferences. Activities can include seminars, guest speakers, writing contests and other things. "This is an excellent opportunity to work with highly motivated and capable students," says Student Activities Director Barb Delansky. To apply, send her a letter of interest by May 28. A committee of current PTK members and staff will make the selection. Call ext. 2337 for more information.

## French class will ease transition into second-year coursework

French instructors Ginny (Nelson) Reich and Fay D'Ambrosia announce that French 103 will be offered summer term. It is the third quarter of first-year French that will be a good transition for students wanting to build their confidence and skill level before taking second year college level French in the fall. The course will be offered 10 a.m.-12 p.m. Monday through Friday from June 21-July 16. Students with two years of high school French are encouraged to try it out. For details, call ext. 2419.

## Projects will improve teaching



Back row, from left: Beth Naylor, Ray Peterson, Phyllis Geyer, Linda Loft, Tom Reimer. Front row, from left: Bill Griffiths, Tom Rubick, Bob Prokop.

The Faculty Professional Development Team has funded four proposals to improve the quality of teaching at Lane, says team chair Carmel DeCroos.

- (1) Jill McKenney and Tom Reimer will coordinate four math software workshops.
- (2) Phyllis Geyer will edit a workbook for instructors who teach students with subject matter anxiety, and offer a series of six workshops on the topic.
- (3) Ray Peterson and Linda Wong will host workshops on "The Application of the Textbook Toolbox" and "Mt. Hood's Unified System to Serve At-risk Students."
- (4) Bill Griffiths, Linda Loft, Mary Lou Lynch, Beth Naylor, Bob Prokop, Tom Rubick, and

Stan Swank will purchase software for an interdepartmental multimedia project. The FPDT encourages faculty to apply for the next round of mini-grants. Proposals are due May 24. Forms are available in departments. For details, call ext. 2638.



## Congratulations

Cara DiMarco, counselor and instructor for Transitions to Success, has been offered a book contract to write a college text on life transitions. The textbook will be nationally marketed to community colleges and universities. - Student Services

## Oregon Trail dinner thanks

The recent Oregon Trail dinner was a great success. Thanks to Jim Wychules and Foodservices staff for a wonderful dining experience, especially dessert. Special thanks to all the staff, students and the planning committee for making this event a reality. The presentation by Pete Peterson and actors was entertaining and informative and we look forward to the full production fall term. - Colleen Cairney

## Coast trip remembered

A report from Colleen Cairney: Everyone enjoyed the recent staff bus trip to the coast. Thanks to Alen "Nordstrom's" Bahret for organizing the trip and entertaining the crew in the *back* of the bus. Special thanks to Bill Porter and Betty Holden for the morning welcome and goodies that recharged us for the trip north to Newport--and parts unknown due to a parade. Once out of Newport, Julie Baker rerouted us to Salishan Mall for an unpublished stop; on to Depoe Bay for lunch and a shower; next to Lincoln City and the factory outlet where plastic was the best source of cash; and finally our eventful dinner at a local brew pub where we will long be remembered. Looking forward to the next LCC bus trip, and I promise not to do my laundry. Signed, member, Show and Tell Club.

---

### - JOBS -

Child Care Co-op Teacher, Aide III, closes June 1.

---

### - ADS -

'89 PLYMOUTH Voyager LE. Super clean, very low miles, a/c, all power, auto, cassette, tilt, cruise, privacy glass, 7-passenger, turbo engine, roof rack, lots more. \$11,699. 484-6979. Diane E. Rogers, Soc. Sci., ext. 2026.

1981 TOYOTA Corolla Tercel, 104,000 miles, excellent condition, mechanically sound, \$1,800, available about May 30. Contact Nancy Bell, ext. 2347, Financial Aid.

FOR SALE: 4 STEEL WHEELS, 14", \$17 apiece or all 4 for \$50. Vicki Levine, Soc. Sci., ext. 2074, or 345-8344.

FOR SALE: 2 PLAY STRUCTURES. One 4'x6' wooden structure with slide and fire pole; and one sturdy modular Quadro set. Each \$40 OBO. Peg Allison, BDC, ext. 2923.

WANTED: FISHING TIPS. Since I'm relatively new to Oregon, I am in need of advice about where to take my 12-year-old son fishing (especially Eugene area). Please send your suggestions for proper rigging and good fishing holes to Linda Fossen, Office of Student Services, ext. 2314.

JENN-AIRE stove/oven, 12 years old, with accessories, \$175. Woman's leather jacket, size 11/12, never worn, \$75. Sharon Jelinek, ext. 2066.

FOR RENT: Newer 2-bedroom house at 1904 Arthur. Large sunny rooms, large yard, dishwasher, washer/dryer hook-ups, \$600 plus \$250 deposit. Call Barbara Meininger, ext. 2017, or 343-2664.

FOR SALE: \$105 cheap for an old bucket. This 1969 4-door Dodge was once at the Presidio; now you can see it at 2430 Jackson. To negotiate, call Nick at 342-4817, or leave message with Lorna Funnell, Cont. Ed., ext. 2906.

FOR SALE: Orange flowered couch and loveseat set. Well used but will make a good starter set, \$50. Call Ronda Hatefi at Family & Health Careers at ext. 3076.

FOR SALE: '79 DATSUN 280ZX, bronze, runs strong, dependable. \$1,950 OBO. Linda Mooney, Adult High School, ext. 2214; home 933-2511.

FOR RENT: 1-bedroom apartment attached to my South Eugene home. New kitchen and bathroom, luxuriously carpeted, patio, yard, garden space to share. \$400/month. First, last, deposit. Lease available. Call Enid Leonard, Study Skills, ext. 2075, or 686-4318.

FOR SALE: 1984 HONDA CIVIC 2-door + hatchback. 50,000 miles, original owner, all service records available. Excellent condition. \$2,800. Please call Sharon Thomas evenings at 747-1623. (Student Service Associate, Counseling, exts. 2802/2297.)

1981 CHEVETTE: 4-speed, 4-door hatchback. Excellent condition inside and out. Everything works. Air, AM/FM cassette stereo. New tires, clutch, master cylinder and rear brakes. Good gas mileage. \$850. Maryanne Graham, Athletics, ext. 2293, or 344-8648.

FOR RENT STARTING JUNE: Very nice detached 1-bedroom apartment on second floor. Private outside entrance. No smoking. Shower only. \$375/month includes a first-floor washer & dryer hookup and separate storage room. Drive by 1220 Tyler Street and call Alice Kaseberg, Math, ext. 2392, or 345-7836 evenings.

WANT TO RENT, BORROW OR BUY a car-top bicycle rack. Jan Kleminsky, Computer Services, ext. 2865 'til 12:30; 747-2259 after 1 p.m.

DEADLINE for The Daily is 12-noon of the working day prior to publication on Mondays, Tuesdays, Wednesdays, and Thursdays. Submissions must be made in writing and include first and last name, department, and extension number. This information is required to be printed with ads.



# The Daily

Joan Aschim, Editor

Published for the staff of Lane Community College

747-4501, ext. 2591

Thursday, May 20, 1993

Week 8 of Spring Term

## Today through Saturday

- Facilities Management Committee meeting, today, 3 p.m., Board Room.
- Instructional support staff meeting, today, 3 p.m., Social Science lounge.
- Job class specification open hearing on Office Support, Personnel, Purchasing, Telephone and Administrative Support, today, 3-4 p.m., Forum 308.
- Coffee Drinkers Appreciation Day, cafeteria, all day today.
- Wagon Train Menu presentation, Friday, 12-1 p.m., Forum 307.
- Flea Market, Saturday, 8 a.m. to 3 p.m., northwest parking lot.
- KLCC/KLCO broadcasts live from the 23rd Annual Willamette Valley Folk Festival at the UO, Friday through Sunday.
- Dance events (see page 2).

## Board report

### Aviation maintenance program advances toward expansion

A return-to-service hangar and an avionics lab will be built when \$900,000 in expected federal funding is received, the LCC Board of Education decided at its May 12 meeting. President Jerry Moskus advised the board that staff supported the aviation maintenance program expansion for six reasons. One, it would make our students more competitive, especially in avionics, the installation, servicing and repair of electronic equipment in aircraft, and by enabling students to work on the larger aircraft available at the airport. Two, it would relieve crowding and enhance safety. Three, it would cost the college only one-third of the total projected \$1.8 million, due to the \$900,000 in expected federal funds plus \$300,000 expected from LCC Foundation air show proceeds. Four, expansion would make Lane eligible to apply for additional grants from the Federal Aviation Administration. Five, it would strengthen the community as a whole. Six, it meets the partnership goal stated in the Unifying Principles. The recommendation passed with a 4-2 vote. Roger Hall was absent. Chuck Ivey and Larry Mann dissented, questioning job growth projections and the availability of local jobs. Ivey said better job and wage information might change his mind, and Mann said he would favor a bond to finance it.

### Other action

- The board awarded a \$41,000 contract to Umpqua Roofing for reroofing.
- The board acknowledged the retirements of Roland Meyer from Mechanical Technologies and Shirley Pearson from the President's Office, in spite of chairwoman Pat Riggs' no vote to protest Pearson's leaving.
- The board approved the results of the ASLCC election. Mann cast the single no vote saying that the OSPIRG measure was unfairly worded.
- The board supported membership but not signatory participation in a proposed Eugene-Springfield-Lane County sports consortium, in response to organizers' request for endorsement.

### Statements

- Ivey challenged classified, faculty and management staff to submit their definitions of shared governance, indicating that his own voice has not always been heard as he expected it would under the system.
- Riggs said contract negotiations with the president are going well.
- ASLCC President John Mitchell introduced president elect and vice-president elect for 1993-94, Steven Cheeseman and Nancy Johnson.
- LCCEF President Jerry Sirois said a benchmark distributed last month that showed an 11.4 percent increase in classified positions over 10 years did not show that general fund supported positions increased only 1.31 percent and the remaining 9.81 percent increase was grant and contract funded.
- Moskus said a tentative faculty union agreement has been reached.
- Moskus said he will decide soon whether to fill the current vice presidential vacancy.
- Peter Sorenson noted that college attorney Tim Harold has won the Andrew Clement pro-bono award.

### Reports

- Affirmative Action Director Donna Albro updated the board on the office's activities. Among them is investigation of whether to add cultural diversity credits to the Oregon transfer degree.
- Darrell Allyn of Campus Services reported that the conversion to gas-powered heating and cooling system has cut our electric bill so profoundly that EWEB called to see if everything was okay.
- LCC Foundation Director Joe Farmer said the Eugene Air Show is expected to net over \$300,000 for the aviation maintenance program. The show will be held Aug. 7-8 at the Eugene Airport.
- Investment Opportunities Committee Chair Sandy Cutler said the committee recommends funding proposals for a fitness education center, a brand name restaurant on campus, and a student exchange program with the Russian republic of Georgia. The board may take action in June.

The board's next meeting is set for June 16.



### International dinner thanks

A hearty thank-you to all the following departments who assisted with time, talent and effort in making the international students' banquet and performance a great success. Because of your professional help, we succeeded: Printing/Graphics, Campus Services, Security, Foodservices, Health & PE, Audiovisual Services, Bookstore, KLCC/KLCO, Performing Arts, Institutional Advancement, Financial Services, Torch, Social Science, Multicultural Center, Student Activities, Student Services, ASLCC, and the International/Intercultural Committee. Many departments responded on short notice and helped us promptly. We could not have done it without you. - International students

### Continuing Education instructor has photos on display

Sam Blackwell, photography instructor for Continuing Education, has over 35 photos on display today at Thurston Elementary School for Grandparent's Day, from 9 a.m.-1:30 p.m.

### Surplus property sales

Over-the-counter sales of surplus property to individuals has been permanently discontinued. Please inform your staff and students that surplus is no longer available for sale to individuals. Department staff wishing to utilize surplus property for College purposes are always welcome to browse and to make appropriate transfers of surplus to their departments. Thanks. - Lloyd Rain, ext. 2208

### Golf tournament

Registration is underway now for the LCC Foundation's annual golf fund-raiser. The scramble will be held Monday, June 14, with a shotgun start at 1 p.m., at the Eugene Country Club. Prizes include a new Chevrolet or \$5,000 in cash for a hole-in-one. The fee is \$125 each or \$250 for a couple. A portion of the fee is tax-deductible. To sign up, call the Foundation at ext. 2810.

### Terri Lindseth update

Terri Lindseth of Foodservices continues to improve from hot oil burns sustained in an accident on April 20. She has had a second skin graft and expects to be in the hospital at least three more weeks. Her new room number is 4407, Emanuel Hospital, Portland, OR 97227. Cards would be appreciated.

### Iced coffees on special this week

Foodservices' espresso cart is serving a double "down under" kiwi cremosa this week for \$1. Y'all come, says Foodservices manager Jim Wychules.

### Dance news

- An intermediate-advanced ballroom dance workshop in bolero, waltz, cha cha and rumba will be taught by Joe Laulusa from Tigard Dance Studio on Saturday, May 22, 9:30 a.m.-4:30 p.m., in Health 101. Cost is \$5 per one-hour class; five will be offered. For details, call Nancy Anderson at 461-2585 or ext. 2545, H&PE.
- A ballroom dance will be held Friday, May 21, 8 p.m.-midnight in the main gym. Music by the Salem Big Band will be for general dancing plus performing groups from OSU and locally, including Lane students and faculty. Lane culinary arts students will provide refreshments. Admission is \$5 at the door. Semi-formal attire requested. Sponsors are the Ballroom Dance Club, ASLCC, and Intramurals. For details, call Nancy Anderson at 461-2585 or ext. 2545, H&PE.
- A dance concert titled "Interludes" will be given Friday, May 21, at 8 p.m. in Performing Arts main theater. Lane head dance instructor Mary Seereiter and Sherrie Barr from the UO will perform eight works. Lane artist Tim Outman designed a sculpture especially for the concert. Tickets are \$6. Call the box office at ext. 2202.

### Parent training available

The Child Care Resource Connection will hold a free workshop, "Parent Training: The Provider's Role," on Saturday, May 22, from 1-4 p.m. at LCC at Cottage Grove, Room 101. For more information or to register, call CCRC at 726-3954.

---

- ADS -

FOR SALE: Brown recliner-rocker, \$25; floor lamp, \$5; twin bed and new flannel sheets, \$75; mirror, \$5; dresser, \$50. Call ext. 2665 or 687-5701. Kathryn Reid, SHS.

YACHATS BEACH CABIN for rent: Harry's Place. Two-bedroom, sleeps 4-6. Many dates available during June, August, Sept., and some dates in July. Jan Brandstrom, Counseling, ext.s 2443 or 2204; evenings 345-1395.

COUCH FOR SALE: very comfortable, not an eyesore, beige and blue plaid, \$40. Nancy Bell, ext. 2347, Financial Aid.

'89 PLYMOUTH Voyager LE. Super clean, very low miles, a/c, all power, auto, cassette, tilt, cruise, privacy glass, 7-passenger, turbo engine, roof rack, lots more. \$11,699. 484-6979. Diane E. Rogers, Soc. Sci., ext. 2026.

CHILDCARE - Child Development Center staff person with 12 years experience seeking full-time employment. (June 14-Sept. 10) Infant and toddler specialist. Karen Hall, F&HC, ext. 3076 or 461-0627.

DEADLINE for The Daily is 12-noon of the working day prior to publication on Mondays, Tuesdays, Wednesdays, and Thursdays. Submissions must be made in writing and include first and last name, department, and extension number. This information is required to be printed with ads.



# The Daily

Joan Aschim, Editor

Published for the staff of Lane Community College

747-4501, ext. 2591

Monday, May 24, 1993

Week 9 of Spring Term

## Meetings this week

- Administrative Services, Tuesday, May 25, 8:30-10 a.m., President's Office. Terry Caron, ext. 2311.
- Classified Council, Wednesday, May 26, 3-5 p.m., PE 205. Gloria Jarvis, ext. 2604.
- Faculty Council, Thursday, May 27, 3-4:30 p.m., Board Room. David Sherman, ext. 2419.

## Wooten to speak

Cynthia Wooten, representative from District 41, will speak today from 1-2 p.m. and 2-3 p.m. in Center 402 to Steve Candee's State and Local Government classes. Guests are welcome.

## Flight tech grads get jobs

Lane Chief Flight Instructor Bruce Gustafson says he has recommended three Flight Technology graduates for federal certification as flight instructors this term. All three already have obtained employment as flight instructors. The three, Edward Kropf, Daniel Jirek, and Robert Bates, all received compliments upon completion of rigorous oral and flight tests by FAA inspectors from the Flight Standards District Office in Portland. Flight Technology Chairman Bob Farrand adds that alumni John Siegel and Bryon Looney, both of whom were employed as part-time instructors at Lane this year, recently have been hired to fly as charter pilots for separate companies in Alaska.

## College Council needs faculty rep

A faculty at-large position on College Council is available. If interested, contact David Sherman in English, Foreign Language and Speech at ext. 2419 by Wednesday, May 26. Nominees will be placed on a ballot to be circulated in The Daily the first week of June.

## New college publications available soon

The summer class schedule will arrive in homes by June 1. The college catalog will be available on campus by June 30. Instructional departments will proof the catalog again on June 2. Program brochures will be completed by August 1. I will be out of the office until June 2. If you have any questions, call me after that date. - Susan Sutton, Institutional Advancement

## KLCC/KLCO news director wins award

KLCC/KLCO News Director Tripp Sommer has received the Imagine! Award for Significant Contribution to Arts-in-Education in 1992-93 from the Lane Arts Council. He won in the category of Notable News Media for sharing Arts-in-Education activities with readers and listeners. Sommer hosts Northwest Passage on weekdays at 4:30 p.m. focusing on local and regional news. He has interviewed on the show a mix of local artists, authors and performing artists.

## Weaving instructor awarded grant



*Nancy Hoskins*

Nancy Hoskins, weaving instructor in the Art Department, has received an Oregon Council for the Humanities research grant. She will travel to France in 1994 to study textile collections in museums. Her study will focus on Coptic or early Egyptian weavings from the third to seventh centuries A.D. Hoskins will write a book about the collection. She'll make the trip sometime in the spring of 1994.

Hoskins also wrote the book "Universal Stitches" published in 1982 by Skein Publications in association with the University of Washington Press. "Weft-Faced Pattern Weaves: Tabby to Taquete," was published in 1992 by the University of Washington Press. Both are teaching texts.

## AAWCC luncheon scheduled

The Lane Chapter of American Association of Women in Community Colleges will meet at 12-noon on Wednesday, June 2, in the Board Room. A complimentary luncheon will be provided for members. Non-members and guests may purchase a ticket for \$5, which includes 1993-94 membership dues, from Julie Baker, ext. 2199. Membership is open to all staff and students interested in issues affecting women at community colleges. Please make your luncheon reservation by Friday, May 28.

## New exhibit at Library

The Library Mezzanine Gallery features paintings by local artist Richard Di Napoli. Born and educated in Argentina, Di Napoli states he has "been influenced by some of Picasso's works, but also by surrealistic proposals." He works primarily in oils. The Mezzanine Gallery is on the upper floor of the Library. The exhibit runs through June 10. For more information contact Daniel Moret, ext. 2318.



## Senior volunteer program seeking more volunteers

The Retired Senior Volunteer Program will meet soon to explain how RSVP works and what volunteer opportunities attract seniors. If you want your department to be notified of the meeting, call 342-1881.

## LCC goes to the ballpark again

LCC staff and families are invited to the Eugene Emeralds baseball game and a pre-game all-you-can-eat-and-drink picnic at Civic Stadium on Thursday, July 15, picnic at 6 p.m. and game at 7 p.m. Arrival time of 5:45 p.m. is recommended. The Ems take on Boise that night and the Gorilla will entertain fans. President Jerry Moskus will throw out the first pitch! We have spaces for 120 people. Cost will be \$8.50 per person for a general admissions ticket to the game and a picnic menu of hamburgers, hot dogs, beverages, potato salad, and baked beans. The combination of good food, a great game, and friends and family promises a truly memorable evening. The event is being sponsored by the classified, faculty, and management professional development teams. Tickets and arrangements are being handled by Sarah LaMaster, ext. 2312, Institutional Advancement. Ticket sales will begin May 24 and end July 5. An exact count must be given to the Ems office on July 6. Tickets must be paid for in advance and cannot be reserved over the phone. Plan now to join your co-workers for a great night at the ballpark this summer.

## Raft trip

A planning session for a white water raft trip for Lane Chapter of American Association of Women in Community Colleges members will be held Thursday, June 3, at 5 p.m. in Apr. 215. The trip tentatively is set for Sept. 11-12. Only 21 spots are available, so attend the meeting and bring your checkbook as a deposit may be required. For more information, contact Linda Myers, ext. 2883.

## June conferences

For detailed information, contact Julie Baker, ext. 2199.

- "National Conference On Race And Ethnicity In American Higher Education," New Orleans, June 3-8, \$250.
- "1993 International Symposium on Adult Education: Adult Education and Economic Development," Shenyang, China, June 7-11, 1993, \$200. Post-Symposium Tours are available for those who may wish to extend their stay in China for an additional \$739.
- "Teaching For A Change: Classrooms, Colleagues, Communities," Colorado, June 30-July 3, \$320.
- "Partnerships," The Campus Compact Center for Community Colleges 2nd National Conference, June 2-5, Scottsdale, no cost given.
- "Small Business Management Annual Conference," June 6-9, Charleston, South Carolina, \$175.
- "Establishing and Managing Successful Records Management Programs," Portland, June 7-8, \$495.
- "How Secretaries Develop Managerial Skills," Portland, June 8, \$125.
- "Write for Success: The Basics of Effective Business Writing," Beaverton, June 8, \$125.
- "Coaching and Teambuilding Skills for Managers and Supervisors," Eugene, June 9, \$99.
- "Institute for the Management of Lifelong Education," June 13-25, Harvard, \$3,600.
- "14th Annual Pacific Northwest Great Teachers Seminar, June 20-24, Portland, \$375.
- "Leadership & Supervisory Skills for Women," Eugene, June 22, \$69.
- "How to Manage Stress: A Woman's Workshop," Eugene, June 28, \$59.
- "Summer Institute for Women in Higher Education Administration, Bryn Mawr, June 27-July 23, \$4,800.
- "Beyond Texts: Teaching Religion and Material Culture," U of Hawaii, June 13-July 23, information coming.

---

### - JOBS -

Nurse Practitioner, Student Health Services, one half-time position, one full-time position, faculty, closes 6/28.

---

### - ADS -

MY LEFT KNEE insists that I sell my purple Trek 1420 sport-touring bicycle, 62 cm, aluminum, Shimano 105/Deore components. Like new. Rode it in '92 Cycle Oregon V. \$930 when new, now \$650. Jerome Garger, E,FL&S, ext. 2162.

VALUE CHECKS: Kidsports fund-raiser, lots of great coupons, will deliver, \$10. Pat Hansen, BEC, ext. 2251, or 689-0479.

TWO TICKETS for sale to Eugene Symphony on Saturday, May 29, 8 p.m. Were \$17 each; make offer. Judith Watt, T&D, ext. 2876, or 683-1530.

FOR SALE: Brown recliner-rocker, \$25; floor lamp, \$5; twin bed and new flannel sheets, \$75; mirror, \$5; dresser, \$50. Call ext. 2665 or 687-5701. Kathryn Reid, SHS.

YACHATS BEACH CABIN for rent: Harry's Place. Two-bedroom, sleeps 4-6. Many dates available during June, August, Sept., and some dates in July. Jan Brandstrom, Counseling, exts. 2443 or 2204; evenings 345-1395.

COUCH FOR SALE: very comfortable, not an eyesore, beige and blue plaid, \$40. Nancy Bell, ext. 2347, Financial Aid.

DEADLINE for The Daily is 12-noon of the working day prior to publication on Mondays, Tuesdays, Wednesdays, and Thursdays. Submissions must be made in writing and include first and last name, department, and extension number. This information is required to be printed with ads.



# The Daily

Joan Aschim, Editor

Published for the staff of Lane Community College

747-4501, ext. 2591

Tuesday, May 25, 1993

Week 9 of Spring Term

## Speaker

Mike Gleason, Eugene city manager, previously scheduled to speak to Steve Candee's "State and Local Government" classes on Friday, May 28, had to reschedule and is now set for Friday, June 4, from 1-2 p.m. and 2-3 p.m. in Center 402. Guests are welcome.

## Office supplies purchasing system to be explained

Purchasing Services and Boise Cascade Office Supply representatives will hold an orientation to describe the office supplies purchasing system in use at the college, on Wednesday, May 26, at 2 p.m. in PE 205. Bring your questions and concerns.

## Literacy program to hold awards evening

A recognition dinner complete with awards, certificates and entertainment will be provided for the "Stars of Literacy" on Tuesday, June 1, from 5-8 p.m. at the First Christian Church. Three groups will be honored: all county literacy volunteers who tutor basic reading, writing, math and English, (over 250 people); teachers in the Adult Basic and Secondary Education program who have been involved for 15 years or more; and the "pioneers" who started Lane's ABSE program and the Eugene/Springfield Literacy Council. One of the program's first-ever students will attend. Thanks to all who have made this a more literate community. - Liz Coleman

## Women students display art

The Women's Center is showcasing the art of women students in a show called "Healing Through Art." The exhibit includes various media and will continue through Friday, May 28.

## Library recall notice

Faculty and staff are requested to return all library items so that we may complete our conversion to the new ATHENA system. If you wish to keep your item, we can quickly update the records and get the item back to you. Anyone still having overdue material after June 14 will be billed for the replacement cost. Thank you. - Cheryl Coleman, lead librarian, ext. 2357

## Closed

- The Job Placement Office will be closed on Thursday, May 27, from 11:30 a.m.-1:30 p.m.
- Financial Aid will be closed on Friday, May 18, from 11:30 a.m.-1:30 p.m.

## Limited service at Student Health

Student Health Services will not have the service of its regular doctors during finals week. Be sure to schedule any necessary doctor appointments for follow-ups and prescription refills before June 4. Time is limited so the earlier you call, the more likely you are to get a time convenient for you.

A reminder: SHS will be close at 12-noon on June 11 for the summer. It will reopen on the first day of fall term classes, Sept. 27.

## Meet Nancy Peyron



Nancy Peyron joined Lane last year to coordinate the college's Chemical Dependency Counselor Training Program. Her office at 401B Center buzzes with activity. She is the most likely person you'll talk to if you inquire about the program, a rigorous 93-credit two-year curriculum with several classes taught by professional therapists in private practice.

It has been a challenge to publicize the new program, says Peyron. "We're just now starting to become known around town. Some students who think they want to be in the program find out how demanding it is." She cites both the workload and high degree of competency required in its classes. Next month, the first group of students will graduate after completing 648 hours of cooperative work experience in local treatment centers. "Many students find this part of the program extremely valuable," says Peyron.

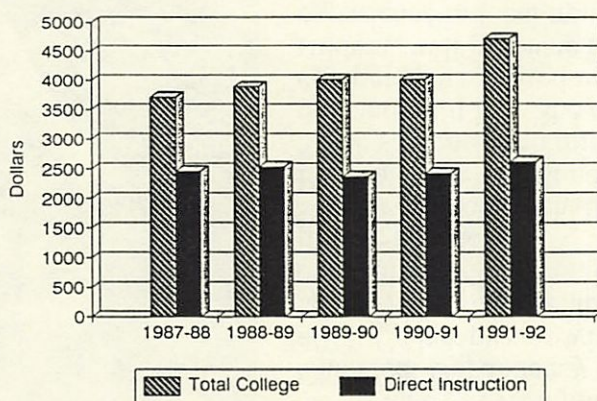
Peyron has a bachelor of arts degree in international studies from the University of Oregon. She is brushing up on French in Carolyn Spector's conversation class and is taking Mary Seereiter's Stretch and Placement class. She also is pursuing a master's in organizational development from the Leadership Institute of Seattle. Her graduate work focuses on family systems theory as well as the thrust of Lane's chemical dependency counselor program.

Peyron says her spare time is filled with sumo wrestling, beekeeping and Persian calligraphy, with an occasional film and video binge.



KEY BENCHMARKS  
LANE COMMUNITY COLLEGE  
General Fund Cost per FTE

General Fund Cost per FTE  
1987-88 through 1991-92



- ✓ In 1991-92, the college's cost per FTE was \$4,715. This represents a 17.7% increase over the previous year.
- ✓ The cost per FTE for direct instruction increased - about 8% since 1990-91. The direct instruction cost per FTE was \$2,620 in 1991-92.
- ✓ The 1991-92 increase was largely due to the supplemental budget expenditures.

SOURCE: Financial Services  
Research, Planning and Evaluation  
April 6, 1993

### Raffle tickets available

♥ A raffle to benefit Campus Ministry will be held June 4 in the Cafeteria. Tickets for \$2 are on sale now at the ministry in Center 242. Over \$5,000 worth of prizes have been donated.

### College Council needs faculty rep

A faculty at-large position on College Council is available. If interested, contact David Sherman in English, Foreign Language and Speech at ext. 2419 by Wednesday, May 26. Nominees will be placed on a ballot to be circulated in The Daily the first week of June.

### Diversity series to cover lesbian and gay issues

The "Issues in Cultural Diversity" seminar series offered through Social Science will focus on "Lesbian and Gay Issues" today from 3-4:30 p.m. and 5:30-7 p.m. in Apr. 216. For more information, contact Vicki Levine at ext. 2074.

### Pay change requests available

Faculty: If you wish to change your existing pay plan for the 1993-94 fiscal year, you must fill out a faculty pay plan change request form and return it to Personnel Services no later than July 1. Forms are available in Personnel. - Judy Ward, ext. 2583

### Exit interviews

Federal regulations require that students receiving a Stafford Student Loan or SLS Loan while attending Lane must attend an exit interview during their last term of attendance. The exit interview outlines financial planning, disclosure statements, repayment procedures, how to correspond with the lender, secondary markets, loan consolidation, options for making payments, and the consequences of default. The interviews will be held Thursday, May 27, at 10 a.m. in Forum 309, and at 2 p.m. and 6 p.m. in Forum 308; and Friday, May 28, at 9 a.m., 1 p.m., and 4 p.m., in Forum 308.

### - ADS -

TWO BIKES; accordion; beautifully restored/rebuilt '74 BMW, \$4,800 OBO. Jo Anne McGillivray, 344-5601, or ext. 2419, E,FL&S.

FOR SALE: NOW YOU CAN OWN "FRED," (explanation on request), a 1980 Ford Courier pickup. Five-speed, 117,000 miles, well cared for with maintenance records since 36,000 available. \$1,395 OBO. Also, RV auto tow bar, \$60. Please call Kit Hopkinson at 345-7717. (F&HC, ext. 2623.)

MY LEFT KNEE insists that I sell my purple Trek 1420 sport-touring bicycle, 62 cm, aluminum, Shimano 105/Deore components. Like new. Rode it in '92 Cycle Oregon V. \$930 when new, now \$650. Jerome Garger, E,FL&S, ext. 2162.

VALUE CHECKS: Kidsports fund-raiser, lots of great coupons, will deliver, \$10. Pat Hansen, BEC, ext. 2251, or 689-0479.

TWO TICKETS for sale to Eugene Symphony on Saturday, May 29, 8 p.m. Were \$17 each; make offer. Judith Watt, T&D, ext. 2876, or 683-1530.

FOR SALE: Brown recliner-rocker, \$25; floor lamp, \$5; twin bed and new flannel sheets, \$75; mirror, \$5; dresser, \$50. Call ext. 2665 or 687-5701. Kathryn Reid, SHS.

COUCH FOR SALE: very comfortable, not an eyesore, beige and blue plaid, \$40. Nancy Bell, ext. 2347, Financial Aid.

DEADLINE for The Daily is 12-noon of the working day prior to publication on Mondays, Tuesdays, Wednesdays, and Thursdays. Submissions must be made in writing and include first and last name, department, and extension number. This information is required to be printed with ads.



# The Daily

Joan Aschim, Editor

Published for the staff of Lane Community College

747-4501, ext. 2591

Wednesday, May 26, 1993

Week 9 of Spring Term

## Today

- Office supplies purchasing system orientation, 2-3 p.m., PE 205.
- Classified Council meeting, 3-5 p.m., PE 205.

## Graduation almost here

The college's 28th annual commencement will be held on Friday, June 4, at 7:30 p.m. at the Hult Center. Adult High School graduation will be held on Thursday, June 3, same time and place.

## Faculty Council agenda

Faculty Council will meet Thursday, May 27, from 3-4:30 p.m. in the Board Room. Action/discussion items on the agenda include faculty evaluation of administrators, student evaluation of faculty, council concept issues, and in-service brainstorming.

## Quatro Pro class offered to staff

Quatro Pro training is available to all college employees. A beginning level class will be taught Thursday, May 27, from 2:30-6 p.m. in Business 209. For more information and to register, call Pam McClelland in Electronics at ext. 2459.

## AAWCC extends luncheon invitation to all

All staff are invited to the annual meeting of the Lane Chapter of the American Association of Women in Community Colleges on Wednesday, June 2, from 12-1 p.m. in the Board Room. Formalities will be brief, food will be wonderful (chicken Indochina and Oregon strawberry shortcake), and the company will be terrific if *you're* there. No charge to members and \$5 covers lunch and membership if you'd like to join. Please make a reservation with Julie Baker at ext. 2199 by Friday, May 28.

## Newsletter available

If you did not receive a copy of the spring 1993 issue of the Oregon newsletter of the American Association of Women in Community Colleges and would like one, contact Julie Baker at ext. 2199.



Peggy Buck, Jerry Moskus and Harvey Epperson

## Outstanding business students named

President Jerry Moskus presented the annual Business Department outstanding student awards last week. Peggy Buck won the Office Administration Student of the Year award. An accounting major, she plans one more year at Lane before transferring to Linfield College to complete a bachelor's degree.

Harvey Epperson won the Wall Street Journal Award. He is a business management major and intends to pursue a bachelor's degree at the University of Oregon.

LCC business faculty select the winners based on academic excellence, cooperative work experience, second-year standing, and a demonstrated sense of commitment, positive attitude and generally impressive behaviors.

## Three cheers for PTK

Lane's chapter of Phi Theta Kappa, the international honor society for two-year colleges, received special commendation during the recently held PTK regional convention. The chapter was named a "Three-Star Chapter" for achievement of the society's goals. In addition, Lane's PTK will be cited in the 1993 International Awards program. National PTK Executive Director Rod Risley attributes Lane's chapter success to President Jerry Moskus' support and the support of his administration for "providing rewarding educational experiences inside and outside the classroom." Bette Doris and Barb Delansky are chapter co-advisors. The chapter currently is accepting applications for \$300 summer scholarships. For more information, contact Dorris at ASLCC Legal Services, ext. 2340.

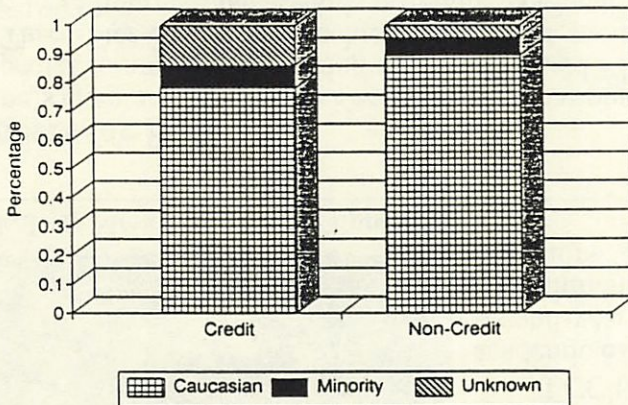
## Dedication will remember Evelyn Tennis

Father Jim Dieringer will dedicate the memorial plaque to former employee Evelyn Tennis on Thursday, June 3, at 2 p.m. in Bristow Square. Two new Douglas fir trees have been planted to either side of the plaque. Friends say Doug firs were Tennis's favorite.



**KEY BENCHMARKS**  
**LANE COMMUNITY COLLEGE**  
**Ethnicity of Students**

**Percentage of Minority Students**  
Fall Term 1992



☑ In fall 1992, about 8% of Lane's credit students and 7% of non-credit students were minorities.

☑ In 1992, of 19,123 students, 1,429 (7.5%) were minorities. Asian/Micronesian/Middle Eastern students form the largest and fastest growing groups.

☑ Minorities represent 4.6% of Lane County's population.

SOURCE: Unduplicated Headcount Reports (LCCIR22100)  
Research, Planning and Evaluation  
March 29, 1993

**Call for proposals**

- "Lifelong Learning: Re-educating America: Technology and Higher Education," by July 5 for Feb. 16-18, 1994 conference, San Diego.
  - "Community Colleges and Business and Industry: Partners in Developing a Quality Work Force," League for Innovation, by June 30 for Jan. 30-Feb. 2, 1994 conference, New Orleans.
- For further information, contact Julie Baker, ext. 2199

**Doctorate program in community college leadership available**

Oregon State University continues to offer a doctor of education program with a focus on community college leadership. Selection of applicants for fall term will be June 1. For further information, contact Julie Baker, ext. 2199.

**Denali to celebrate**

The "Denali Finale," a year-end celebration for Lane's literary publication, will be

held Friday, May 28, on Bristow Square. A barbecue lunch will be served from 11 a.m.-1:30 p.m. by 1993-94 student government officers and dancing, poetry and jazz will be presented from 2-4 p.m.

**Performing Arts showcases student playwrights**

"An Evening of New Plays" is the annual showcase of the best work of budding student playwrights at Lane. Three works will be performed including "The Room," by Erin M. Cohen, "Dance with the Devil," by Devan C. Wilson, and "P.S. Suburban Death," by Rachel Indigo Cerise. The three one-act plays will be performed Friday and Saturday in Performing Arts Blue Door Theater at 8 p.m. Tickets are only \$4. For tickets, call the LCC Performing Arts box office at 726-2202 afternoons.

**Donations wanted for book sale**

Have you overlooked some books marooned in your work nook? The Library is sponsoring a book sale June 1 and 2 from 10 a.m. to 2 p.m. in the Center Building second floor lobby. Your discards are needed. Profits go to buy new books for the collection. Thanks for considering us! - Library

**- ADS -**

NOT GONE, NOT FORGOTTEN. 1977 Ford Thunderbird for sale. Low miles, high luxury. Power everything. Less than 10,000 miles on tires, belts, hoses, water pump, suspension, muffler, and brakes. Clean and ready to cruise through the summer and beyond. Priced to be out of my life at \$1,500. This is a good deal. Sarah LaMaster, Inst. Adv., ext. 2312 or 484-4913.

SMITH CORONA SD 9500 word processing typewriter, memory and 2-line character display, used, \$175. Contact Don Smith, ext. 2071, Study Skills, or home 485-5146.

WANTED TO BUY: Color TV, good condition, reasonable. Vera Wright, ext. 2133, CCRC, eves/weekends at 942-4833.

FOR SALE: THERAPEUTIC neck pillows for both your neck and back. Work great at home, in car, even the dentist chair. Reduced price, \$5. Call Diane Morrow, JPO, ext. 2164.

TWO BIKES; accordion; beautifully restored/rebuilt '74 BMW, \$4,800 OBO. Jo Anne McGillivray, 344-5601, or ext. 2419, E,FL&S.

FOR SALE: NOW YOU CAN OWN "FRED," (explanation on request), a 1980 Ford Courier pickup. Five-speed, 117,000 miles, well cared for with maintenance records since 36,000 available. \$1,395 OBO. Also, RV auto tow bar, \$60. Please call Kit Hopkinson at 345-7717. (F&HC, ext. 2623.)

DEADLINE for The Daily is 12-noon of the working day prior to publication on Mondays, Tuesdays, Wednesdays, and Thursdays. Submissions must be made in writing and include first and last name, department, and extension number. This information is required to be printed with ads.



# The Daily

Joan Aschim, Editor

Published for the staff of Lane Community College

747-4501, ext. 2591

Thursday, May 27, 1993

Week 9 of Spring Term

## Today through Saturday

- Faculty Council meeting, today, 3-4:30 p.m., Board Room.
- Quatro Pro training, today, 2:30-6 p.m., Business 209.
- Rick Acevedo, Salish-Kootenai from Montana, will speak today on native cultures, 10-11:30 a.m., Center 402.
- Job Placement Office closed today, 11:30 a.m.-1:30 p.m.
- Financial Aid closed Friday, 11:30 a.m.-1:30 p.m.
- "Denali Finale," Friday, barbecue 11 a.m.-1:30 p.m., performances 2-4 p.m., Bristow Square.
- "An Evening of New Plays," Friday/Saturday, 8 p.m., Blue Door Theater.

## Classified Council report

At its May 12 meeting, Classified Council discussed college procedure for notifying 911 in the event of a serious medical emergency. Wendy Westfall, Security and Auxiliary Services, told council at its April 28 meeting that campus security should be notified before calling 911 to facilitate immediate dispatch of LCC emergency personnel and to prevent miscommunication. Council is seeking clarification of college procedures for handling medical emergencies on all LCC campuses. Council also discussed the related matter of college policy regarding release of personal information about students to private citizens or public officials. Jolene Bowers will be consulted for information on student privacy requirements.

Guest speaker Mark Harris, substance abuse prevention coordinator, said he provides drug and alcohol counseling for LCC students, staff, and their families. - By Kimberly Buchanan for The Daily

## Faculty Council report

At its May 13 meeting, Faculty Council decided to establish its own committee to address computer and technology issues related to teaching. This faculty group would work with a proposed campus-wide computer and technology committee. Although the faculty committee will focus on issues related to teaching, its membership will not be limited to faculty. Anyone interested in being on the committee should contact Ron Little, Computer Information Technology, ext. 2464.

In other business, council discussed concerns regarding the concept of Weekend College. Members also critiqued and refined the latest draft of the "Student Evaluation of Instructor."

As requested by LCCEA President Don Micken, council agreed to set aside one day of fall in-service for an all-faculty meeting to discuss the new contract, health insurance, early retirement, the political environment and other subjects of interest to faculty.

Faculty Council meets today from 3-4:30 p.m. in the Board Room. - Submitted by Kimberly Buchanan for The Daily

## Oregon student employee of the year is from Lane



*From left: Joan Adams, Brandie Shea, Terry Shea, Regina Shea, Barbara McCall, Cheryl Coleman and Jerry Moskus.*

on June 3. They all will go on to Oregon State University together. Terry, 36, will study business administration, Regina, 35, elementary education, and Brandie, 16, pre-med. The youngest member of the family is daughter Misty, age 11, a sixth grader at Mapleton Middle School.

"They're one family, yet they represent the diversity of LCC. They're what community colleges are about," says President Jerry Moskus. Read more about this inspiring family in the summer class schedule due to arrive in homes by June 1.

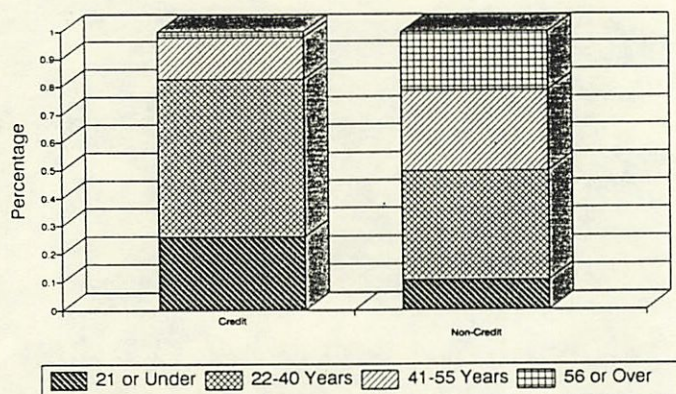
Library work-study aide Terry Shea has been named Outstanding Student Employee for the State of Oregon by the Western Association of Student Employment Administrators. President Jerry Moskus conferred the award last week. Shea also is Lane's student employee of the year. Reference librarian Cheryl Coleman said, "I have rarely seen a student as dedicated and industrious as Terry. He has been one of our most industrious, willing workers," in spite of his 20-hour credit load, a daily commute to and from Mapleton, plus some classes at LCC at Florence. She said he did everything from helping move books for recarpeting to mastering the interlibrary loan process.

Terry's wife Regina also goes to Lane and works in the library. They will graduate together on June 4 and their daughter Brandie will graduate from Lane's Adult High school



**KEY BENCHMARKS**  
**LANE COMMUNITY COLLEGE**  
 Students by Age Group

**Percentage of Students by Age Group**  
**Fall Term 1992**



- ☒ In fall 1992, the average age of Lane's credit students was 29.7 years. Among non-credit students, the average age was 41.5 years.
- ☒ Among credit students, the percentage of students 21 years or under has gradually decreased. Currently, about 26% of the credit students are in this age group.

SOURCE: Unduplicated Headcount Reports (LCCIRZ2100)  
 Research, Planning and Evaluation  
 March 29, 1993

**Grant opportunity**

The GTE Corporation Foundation offers grants of up to \$5,000 for lecture programs on topics that integrate technology and ethics. The proposed lecture or series must be presented on campus and be open to the community at large. Last year 42 awards were made--three of these went to community colleges. Deadline for proposals is October 11. Contact Sarah LaMaster, ext. 2312, for more information and a copy of the grant guidelines.

**Auditions scheduled**

Lane staff are encouraged to audition for the fall production of Pete Peterson's play, "That Pioneer Road," to be directed by Jim McCarty. Auditions will be held on the Performing Arts mainstage on Wednesday, June 2, from 4-6 p.m., Thursday, June 3, from 4-6 p.m., and Wednesday, June 9 from 6-8 p.m. Auditioners should prepare a one-minute monologue. Needed are three men, age 30, 50, 60; two women, age 25 and 55; and about 15 non-speaking parts, all ages. Rehearsals begin

Sept. 20. Six performance dates will be held from November 5 through 20. For more information, call Jim McCarty at ext. 2643.

**Let yourself know**

The Library book sale is June 1-2 from 10 a.m.-2 p.m. in the Center Building second floor lobby. Prices are \$.50 paperback and \$1 hardbound.

**- ADS -**

**WANT TO BUY** very small wood stove and cone style freestanding fireplace. John Winquist, Counseling, ext. 2870, 344-1125.

**WANTED:** I would like to find others who are interested in thinking about, talking about, researching, planning and going traveling. I also love hearing about other's trips. My object is to compare wishes and lifestyles and see if there are individuals who might want to travel together. Any and all interested, please contact Julia Poole, Counseling, ext. 2512.

**WANT TO BUY** small truck, 1970s-80s. Robert Sposato, 683-2681 (LEAP/ABSE, ext. 2945).

**MULTI-PURE WATER FILTERS**, the best on the market, now at wholesale prices. \$280 for stainless steel, \$180 for plastic. Zero-interest time payments up to one year. Rental units also available. Absolutely pure water for drinking and cooking. Robert Sposato, 683-2681 (LEAP/ABSE, ext. 2945).

**YACHATS YURT.** Available by the week or month, June 13-July 12, fully furnished, sleeps 2. 485-4768, Marje Takei, (Counseling, ext. 2244.)

**CARGO CARRIER FOR SALE:** Excellent condition, lock and key, asking only \$50. Call Melanie Martin, H&PE, ext. 2545 or 683-3623.

**977 FORD THUNDERBIRD** for sale. Low miles, high luxury. Power everything. Less than 10,000 miles on tires, belts, hoses, water pump, suspension, muffler, and brakes. Clean and ready to cruise through the summer and beyond. Priced to be out of my life at \$1,500. Sarah LaMaster, Inst. Adv., ext. 2312 or 484-4913.

**SMITH CORONA SD 9500** word processing typewriter, memory and 2-line character display, used, \$175. Contact Don Smith, ext. 2071, Study Skills, or home 485-5146.

**WANTED TO BUY:** Color TV, good condition, reasonable. Vera Wright, ext. 2133, CCRC, eves/wknds, 942-4833.

**FOR SALE:** THERAPEUTIC neck pillows for both your neck and back. Work great at home, in car, even the dentist chair. Reduced price, \$5. Call Diane Morrow, JPO, ext. 2164.

**DEADLINE** for The Daily is 12-noon of the working day prior to publication on Mondays, Tuesdays, Wednesdays, and Thursdays. Submissions must be made in writing and include first and last name, department, and extension number. This information is required to be printed with ads.