

The Daily

Published for the staff of Lane Community College

747-4501, ext. 2591

Monday, Nov. 1, 1993

Week 6, Fall Term

Edited by Joan Aschim

This week:

- Oregon Indian Coalition meeting, today, 10 a.m.; and open forum, 1:30-3 p.m., both in PE 205.
- All Saints Day Mass, today, 12 noon, PE 214.
- College Council, Tuesday, Nov. 2, 1:30-3 p.m., Board Room.
- Student Services directors, Wednesday, Nov. 3, 9-11 a.m., Board Room.
- Instructional Cabinet, Wednesday, Nov. 3, 1:30-3 p.m., Board Room.
- Evangelina Rodriguez Lopez presentation, Thursday, Nov. 4, 11:30 a.m.-12:30 p.m., APR 223 (see next item).

Guatamalan woman to speak

Evangelina Rodriguez Lopez will speak in Patsy Raney's Women's Studies class on Thursday, Nov. 4, from 11:30 a.m.-12:30 p.m., in APR 223. Lopez is a Guatemalan refugee, a member of the Permanent Commission of the Refugees in Mexico, and a women's refugee activist. She is helping plan the next collective return of refugees to Guatemala. Guests welcome. - Patsy Raney, Exts. 2352/2187

College Council agenda

College Council meets Tuesday, Nov. 2, from 1:30-3 p.m. in the Board Room. Council will review the Nov. 10 Board of Education agenda. Kate Barry and Tom Birkenhead will facilitate the final discussion on college role and purpose. Guests are welcome.

Rural/urban issues to be discussed

"Rural/Urban Issues in Oregon" is the next topic of the "Issues in Cultural Diversity" seminar series. The seminar will be held on Wednesday, Nov. 3, from 3-4:30 p.m. and 5:30-7 p.m., in APR 223. Speaker will be Bev Brown. For more information, contact Vicki Levine at Ext. 2074.

In-service planners want your comments

The Faculty Professional Development Team is looking at the strengths of the '93 in-service and areas to change for '94. If you have any suggestions for fall '94 in-service, or comments on the '93 in-service, please get them to Julie Baker, Ext. 2199, I.A., by Nov. 12, to assist the FPDT in planning.

Radio series will examine water issues

KLCC/KLCO will feature news specials on water the week of Nov. 14. The first program, "Water: Thirsting for Tomorrow," will air at noon on Sunday. It was produced by National Public Radio and National Geographic. Regional and local water issues will be further explored on "Morning Edition," weekdays from 5-9 a.m., and "Northwest Passage," weekdays from 4:30-5 p.m. Topics will include the rehabilitation of Oregon rivers, the effect of Bend's growing population on its water supply, water power claims, and more. Call Ext. 2224 for more information.

Classified and management open enrollment reminder

Open enrollment begins Nov. 1. If you are interested in changing from one medical/vision plan to another, or adding a dependent to your medical/vision or dental coverage, you may do so during open enrollment from Nov. 1 to Dec. 15. New enrollment forms may be picked up at the reception desk in Personnel Services. All changes and additions received by Marie Nelson, Personnel Services, by 5 p.m., Dec. 15, will be effective Jan. 1, 1994. Representatives from Blue Cross/Blue Shield and The Managed Care Network will be available to answer any coverage questions on Tuesday, Dec. 7, from 9 a.m. to noon in the Board Room.

Meal tickets now available to staff

All staff now are eligible to purchase Food Services meal tickets. This is a handy way to pay for your food, and a bargain as well: For a limited time, \$25 tickets can be purchased for \$23 from the Food Services office or at marked cash registers. They make great holiday gifts!

Lane Community College provides a quality learning experience in a caring environment.

Disabled Student Services needs a new name

Dolores May is looking for a new name for Disabled Student Services. Send your ideas via intercampus mail or call her at Ext. 2150.

Future reading group meeting changes

The Future Reading Group has canceled its Nov. 24 and Dec. 29 meetings, but it will meet Wednesday, Dec. 8, from 7-8:30 a.m., in the Board Room.

Preschool has openings

Due to student schedule changes, there are currently openings in the Child Development Center Preschool for full-time or part-time care. While priority is given to students, the center also provides care for children of staff or community parents. People looking for high quality care should call Ext. 2519 for more information. - Cindy Dietz, Family & Health Careers

Parenting workshops offered

A workshop, "How to Handle Power Struggles with Children," will be held Thursday, Nov. 4, 7-9 p.m., at Head Start, 221 "B" Street, Springfield. The workshop is the first of four from the co-sponsors of Saturday Circus: Lane, the U of O, and Head Start. Watch The Daily for more announcements. All workshops are free and may be attended on a drop-in basis. Call Carol Lynn Morse at Ext. 2204 for details.

JOBS

- Computer Lab Assistant, Instructional Computing/Electronics, Aide V, closes 11/5/93.
- Speech Instructor, English, Foreign Language & Speech Dept., Faculty, closes 12/10/93.

ADS

THIS WEEK AT THE RENAISSANCE ROOM: Bloody Mary mocktail, cream of celery soup, house salad, chicken chasseur and noodles, baked lasagna, and bread pudding with bourbon sauce. Make reservations at Ext. 2697.

FOR SALE: 1989 NISSAN SENTRA, 5-speed, 2-door, AM/FM cassette, air, 61,000 miles, \$4,400. Georgia Fryback, F&HC, Ext. 2530, or 484-4843 eves.

HALLOWEEN may have been frightful for you but just think of poor Anita Overton. She turned 50!!! Pick up the phone and console her at Ext. 2348. - Edna Grass, Financial Aid, Ext. 2371.


MY 23-YEAR-OLD DAUGHTER is looking for a roommate to share her 2 bedroom apartment, or a room to rent in a private home. Contact Julie Baker, Ext. 2199 or 484-9391.

FOR SALE: 1979 CHEVROLET SPORT VAN, V8, automatic, PS/PB, new muffler, oak console and table, good condition. \$2,900. Georgia Nissen, Ext. 2534.

FOR SALE: MOUNTAIN BIKE, 18 speed men's Iron Mountain. \$80. Edna Grass, Financial Aid, Ext. 2317 or 343-4390.

FOR SALE: FORD F150 XLT Lariat 6-cylinder, 5-speed, excellent condition, \$8,000. Tracy Simms, Pres' Office, Ext. 2200 or 345-4526.

**A MIXED-MEDIA
PAGEANT!**



**THAT
PIONEER
ROAD**

Nov. 5-6, 12-13, 19-20
8:00 PM

*The story of Lane County's
"lost wagon train!" of 1853
brought to life on stage!*

\$8.00 Adults
\$6.00 Children, Students, Seniors
726-2202

Main Campus • 4000 E 30th Ave.

LANE
COMMUNITY
COLLEGE

FOR SALE: ENTERTAINMENT CENTER, large, simulated walnut with glass door and matching bedside end table. Sturdy, in good condition. Must see to appreciate. Asking only \$80. Christine Krygier, OSBDCN, Ext. 2106, or 344-7355.

ENTERTAINMENT '94 coupon books available now. Discounts to restaurants, lodging and more. \$30/book. Portion of purchase price benefits senior class at small private school. Contact Bob Cudmore, Purchasing, Exts. 2571 or 2208.

MF 850 LASER FEEDER. This feeder is compatible with an HP Series II or Canon Mark II laser printer. The MF 850 automatic sheet feeder will greatly enhance the operation of your laser printer. It provides fast and easy feeding of 3 different types of paper plus envelopes. Come by Electronics 201 to see. This item is a donation to any interested department. Pam McClelland, Ext. 2459.

AVAILABLE mid-November, grain-fed beef, half or quarters. Cut and wrapped to your specifications. \$1.44/lb. Bob Way, Co-op Ed., Ext. 2203, or 895-2352.

DEADLINE for The Daily is 12-noon of the day prior to publication on Mondays, Tuesdays, Wednesdays, and Thursdays. Submissions must be made in writing and include first and last name, department, and extension number. That information must be printed with ads except that a home phone may be substituted. Ads are free and limited to staff. Ads will be run twice and must be resubmitted for up to, and no more than, six times a term. Send items to The Daily through intercampus mail, U.S. mail, hand-deliver to ADM 210. E-Mail submissions to Joan Aschim are acceptable, as are 3-1/2" disks with Word or WordPerfect, for IBM or Mac.

The Daily

Published for the staff of Lane Community College

747-4501, ext. 2591

Tuesday, Nov. 2, 1993

Week 6, Fall Term

Edited by Joan Aschim

Today:

- College Council, 1:30-3 p.m., Board Room.
- Martin Luther King Day proposals due. Call Ext. 2199 for details.

Classified Council to launch suggestion program

At its Oct. 27 meeting, Classified Council decided to implement a suggestion program to solicit ideas from staff on how to improve college services and efficiency within existing resources. Council will inform staff about the goals and procedures of the program through The Daily.

Faculty survey delayed

The USC/League for Innovation faculty survey on technology, teaching and scholarship has been delayed. All contracted faculty now will receive the survey the week of Nov. 22. Participants should have two-to-three weeks to complete the survey. President Jerry Moskus strongly encourages faculty to participate in the survey because the results will provide Lane with valuable information for technology planning in instructional areas. If you have questions, call Marie Matsen at Ext. 2313.

Applications for management training funds due soon

The Management Personal and Professional Development Committee will meet Thursday, Nov. 18, to review applications. Submit applications by Friday, Nov. 12. Late and incomplete applications cannot be reviewed. For forms and guidelines, call Lloyd Rain at Ext. 2208.

Lane to host high school staff

An annual workshop for high school staff members will be held at Lane main campus on Tuesday, Nov. 23. About 40 counselors, career educators and parent advisors will hear presentations, tour campus, and have lunch in the Renaissance Room. If you have materials you'd like to share, especially about changes in curriculum or services, send 100 copies to Shan Titus, High School Relations, by Nov. 15 for insertion into the information packets. Counselors who don't attend the workshop will also receive the packets.

Retired counselor wins award

Retired Director of Counseling John Bernham was given the Leona Tyler Award for lifetime contributions to the profession by the Oregon Counseling Association at its annual conference in October. Jan Brandstrom won the distinction in 1990.

Lane helps produce brochure for job applicants county-wide

Lane staff helped produce a new 10-page brochure designed to attract job applicants from culturally diverse backgrounds. It describes Eugene/Springfield and opportunities at Lane, the U of O, School District 4J, Lane Transit District, the cities of Eugene and Springfield, and Lane County. Staff from Affirmative Action, Personnel Services, Institutional Advancement, and Printing/Graphics all contributed. If you'd like a copy of the brochure, contact Rose Holeman at Ext. 2584.

Agencies team up to expand literacy classes

Lane's Adult Basic and Secondary Education Department has teamed up with School District 4J to offer a new literacy class. The class is for in-school and out-of-school high school age students and their parents. Bilingual instruction in English, language arts and computers are offered two evenings a week. 4J offers a complimentary reading class for parents one night a week.

Sponsors are aiming for a full-time program serving Spanish-speaking high school students. The students would earn credit toward a diploma while members of their families improved their language skills.

The program brokers the resources of existing Lane and 4J classrooms, equipment and materials. Grant specialists from those agencies are pursuing funding.

Lane Community College provides a quality learning experience in a caring environment.

Road to be closed for cross-country meet

Lane will host the OSAA high school state cross country meet on Saturday, Nov. 6. Eldon Schafer Drive (east entrance) will be closed from 9:30 a.m.-4 p.m. Gonyea Road (west entrance) will remain open; however, tickets sales will occur at that site. If you are working or attending class that day, notify the ticket sellers at the entrance. Thanks for your patience and cooperation. - Sharon Foster

Coffee club accepting members

Join the Lane coffee club! Requirements are easy: Pick up a coffee club card anywhere Food Services sells coffee and the cashier will validate it when you pay. Buy 10 cups, get one free. And yes, espresso and gourmet flavored coffees are included.

Safety reminder

The college Safety Committee meets monthly to hear your concerns. It evaluates policies, procedures, and training practices; makes recommendations; obtains and reviews safety suggestions and reports of hazards directly from staff; and conducts workplace inspections on a quarterly basis. The members of the committee are: Paul Colvin, Ext. 2216; Bob Creed, Ext. 2547; Don Hein, Exts. 2190 or 2224; Sandy Ing, Ext. 2666; Eilene LePelley, Exts. 2930 or 2251; Debbie Powers, Ext. 2120; Dave Schiappa, Ext. 2405; and John Shirey, Exts. 2248 or 2826.

JOBS

- Library Assistant, Half-Time, Clerk III, closes 11/15/93.
- Instructor, Aviation Maintenance Technician/Mechanical Technologies Dept., Faculty, closes 11/24/93.

ADS

HYUNDAI PC-XT 20 MB hard drive, excellent condition, includes monochrome monitor, manuals, software. Hal Sheller, Math, 726-9382.

USHERS AND TICKET TAKERS NEEDED for "That Pioneer Road." Lane staff may usher any performance on Nov. 5, 6, 12, 13, 19, and 20. Call the box office afternoons at Ext. 2202 to sign up.

WANTED: Small, used microwave, CHEAP. Contact Lana Whiddon, TALN, Ext. 2149.

NEEDED: DONATIONS or will purchase (if price is low enough) items to be placed in our free loan library of assistive devices such as: baby monitoring system, portable tape recorders, magnifying glass, large digital clock or watch, etc. Contact Lana Whiddon, TALN, Ext. 2149.

FOR RENT: Cottage Grove duplex. Only 20 miles from LCC to your front door. Great condition. Two-bedroom, one-bath, one-car garage. For more information call Leigh Alice Petty, TALN, Ext. 2148.

HELP KIDS! We're looking for children's books on tape. Need both the book and the tape to put in our free loan library. Also interested in adult taped books. Contact Lana Whiddon, TALN, Ext. 2149.

THANKS! THE LCC Bowl-A-Thon raised over \$2,000 for Big Brother-Big Sister of Mid-Oregon. Congratulations and thank you to all staff and students who participated. Special thanks to Mary Cudney and Cynde Leathers.

GOOD QUALITY 3-drawer white wicker chest, 30" tall x 28" wide x 16" deep, originally purchased at Pier 1 Imports, \$65. Julie Baker, IA, Ext. 2199, or 484-9391.

FOR SALE: 1989 NISSAN SENTRA, 5-speed, 2-door, AM/FM cassette, air, 61,000 miles, \$4,400. Georgia Fryback, F&HC, Ext. 2530, or 484-4843 eves.

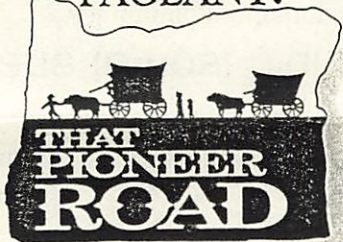
MY 23-YEAR-OLD DAUGHTER is looking for a roommate to share her 2 bedroom apartment, or a room to rent in a private home. Contact Julie Baker, Ext. 2199 or 484-9391.

FOR SALE: 1979 CHEVROLET SPORT VAN, V8, automatic, PS/PB, new muffler, oak console and table, good condition. \$2,900. Georgia Nissen, Ext. 2534.

FOR SALE: MOUNTAIN BIKE, 18 speed men's Iron Mountain. \$80. Edna Grass, Financial Aid, Ext. 2317 or 343-4390.

DEADLINE for The Daily is 12-noon of the day prior to publication on Mondays, Tuesdays, Wednesdays, and Thursdays. Submissions must be made in writing and include first and last name, department, and extension number. That information must be printed with ads except that a home phone may be substituted. Ads are free and limited to staff. Ads will be run twice and must be resubmitted for up to, and no more than, six times a term. Send items to The Daily through intercampus mail, U.S. mail, hand-deliver to ADM 210. E-Mail submissions to Joan Aschim are acceptable, as are 3-1/2" disks with Word or WordPerfect, for IBM or Mac.

**A MIXED-MEDIA
PAGEANT!**



Nov. 5-6, 12-13, 19-20
8:00 PM

*The story of Lane County's
"lost wagon train!" of 1853
brought to life on stage!*

\$8.00 Adults
\$6.00 Children, Students, Seniors

726-2202

Main Campus • 4000 E 30th Ave.

LANE
COMMUNITY
COLLEGE

The Daily

Published for the staff of Lane Community College

747-4501, ext. 2591

Wednesday, Nov. 3, 1993

Week 6, Fall Term

Edited by Joan Aschim

Today:

- Canceled: Instructional Cabinet meeting.
- Student Services directors, Wednesday, Nov. 3, 9-11 a.m., Board Room.

Board report



Cindy Cable. (Photo courtesy of The Torch).

Cindy Cable of Florence won appointment to the zone 1 vacancy on the Board of Education by unanimous vote at the board's Oct. 13 meeting. She began serving at once. She is a justice of the peace and has served on the LCC at Florence Advisory Board.

A proposed football facility received unanimous approval-in-concept. Athletic Director Harland Yriarte and School District 4J Superintendent Margaret Nichols presented information. 4J wants a new site for high school football because the current site, Autzen Stadium, has only one field, causing double-header games, and too much seating, prohibiting an intimate feel and posing a security challenge. 4J owns Civic Stadium and considered that site but found it best suited for its current use as home of the Em's baseball team. Proposed for Lane is a two-field site with a shared bleacher/ concession structure. Preliminary estimates set construction cost at \$1.5 million. 4J would "borrow and pay back" \$350,000 from itself to seed the project, which would then rely on fundraising. Lane would own the facility and use it when it was

not needed for high school football games. Maintenance cost is expected to be covered by fees paid by 4J to Lane. The 4J board already approved the concept. Lane's vote of confidence allows fundraising efforts to begin.

Purchase of a fast food stand also received unanimous approval at the meeting. Lane will buy a Taco Time stand for \$40,169. Food Services Manager Jim Wychules and classified union president Jerry Sirois said they are working on a student-worker classification to cover staffing the cart. The outlet is expected to make money for the college.

Also by unanimous vote:

- President Jerry Moskus' contract was extended for four years amid praise for his performance.
- John Hamilton was appointed to represent zone 2 and Michael Dubick was appointed to represent zone 4 on the Budget Committee.
- Personnel appointments approved were Kay Lutz-Ritzheimer as Business Department chair; Diane Rogers as full-time social science instructor; and Debra L. Andereggen as personnel analyst. The resignation of Mary Ann Klausner from social science was accepted.

In his president's report, Moskus said he had been appointed to the 21st Century Schools Advisory Committee and was the only community college representative on the committee. He said fall FTE enrollment was down 4 percent, noting that community college enrollments often dip when the economy improves. He said the State Scholarship Commission increased aid to private schools but cut it to community college students. He advised board members to contact their legislators about the matter.

The board did not take a position on the sales tax due to that day's ruling by a Marion County judge that the tax may be found unconstitutional.

The board's next meeting will be Wednesday, Nov. 10, at 7:30 p.m. in the Board Room.

Food Services hooks a salmonburger

Chef Ray, owner and chef at Chez Ray's Cafe' Des Cafe's in Eugene, has sold his "world famous salmonburger" to Lane. He will serve the very first one in person as guest chef for Lane's new outdoor grill cart, Cart de Caliente, on Monday, Nov. 8, from 11 a.m. to 1 p.m. The cart will be parked near the main entrance between PE and Administration. Food Services Manager Jim Wychules says he is thrilled to add the salmonburger to the menu at Lane.

Chef Ray invented the salmonburger while cooking for the Disney crew of the movie "Never Cry Wolf" while on location in Alaska. He also served the salmon burger while on the road as concert chef for the Grateful Dead, then at his Eugene restaurant, and now at Lane.

Faculty internship offered

A faculty internship position is open with the classroom and outcomes assessment research project to be conducted winter and spring terms. The deadline to apply is Friday, Nov. 5. For more information, call Julie Aspinwall-Lamberts at Ext. 2576.

Lane Community College provides a quality learning experience in a caring environment.

Printing deadline announced

Printing/Graphics will be closed Nov. 9. Place orders due Nov. 10 in the box on the Loreta Pritchard's desk. The orders will be delivered at the regular time that day. Thank you.

Teleconference topic: Racism

"Healing Racism: Education's Role," a teleconference, will be shown on Friday, Nov. 5, at 10 a.m. in CEN 10. It is sponsored by Old Dominion University. A tape of the conference will be on reserve in the library in two weeks. For details, contact Julie Baker at Ext. 2199.

Computer networking task force sets meeting schedule

The Network Task Force will meet every Wednesday, from 7:30-9 a.m. on the first and third Wednesdays of the month, and 1:30-3 p.m. on the second and fourth Wednesdays beginning today in PE 205. Announcements will be placed in The Daily; locations may vary. The task force is examining college-wide computer networking. To monitor the progress of the task force, consult your department for meeting notes or call Tracy Simms at Ext. 2889 for a copy.

Teleconference series topic: Information technology

Three teleconferences on information technology will be offered Nov. 10, Feb. 10, and April 14, from 9:30 a.m.-noon in FOR 309. The first session is: "Deploying New Computer Technology: How to Manage the Change;" the second, "Solving Local and Wide Area Network Challenges: What Works;" and the third, "Bandwidth and Public Policy: The Data Highway Debate and Its Effect on Your Business." The series is co-sponsored by the Computer Information Technology Department and the Data Processing Management Association. The cost is \$25 per session for non-DPMA members or \$60 for the entire series; and \$15 per session or \$45 for the entire series for DPMA members; all payable at the door. Students may attend free. Pre-registration is required by Nov. 8. Call CIT at Ext. 2826.

Insurance in retirement

Classified and management employees need to remember that changing insurance carriers and/or adding dependents must be done at the open enrollment prior to the date of retirement so that the insurance coverage may continue into retirement. Faculty employees must have two years of immediate prior coverage with OEA Choice before retirement to be eligible to carry their insurance into retirement. Once you retire, you cannot add a dependent or change insurance carriers.

ADS

THANKS, THANKS AND SO MUCH MORE. Thanks so much for the flowers, gifts and many, many cards during my unexpected stay in Sacred Heart. Your thoughts and prayers are appreciated. My many doctors all said to tell you I am completely repaired and checked out for my first 100,000 miles. I've started my second 100,000 miles. Thanks again for your wonderful support. - Jean Whiteside

HECETA BEACH, two lots, 50x120 each, across from Driftwood Shores on the paving, view potential. Both lots \$49,900. Jolene Bowers, 686-0908, Student Records.

FOR SALE: 1981 DATSUN 210 HATCHBACK, 5-speed, AM/FM cassette, rear wipers, great running. Great car for your daughter or son? Asking \$695. Contact Toby Finkelstein, T&D, Ext. 2853; or 683-4495.

FRANKLIN MEDICAL SPELLER/spell checker now available in the Bookstore for \$89. Also: demo model sale: Mac LC1, 2 MG, 40 HD, 12" color monitor and standard keyboard. And: Apple Computer recently dropped their back to school bundle prices. The Bookstore still has some in stock. Questions? Call Teresa Vitus at Ext. 2679.

HYUNDAI PC-XT 20 MB hard drive, excellent condition, includes monochrome monitor, manuals, software. Hal Sheller, Math, 726-9382.

USHERS AND TICKET TAKERS NEEDED for "That Pioneer Road." Lane staff may usher any performance on Nov. 5, 6, 12, 13, 19, and 20. Call the box office afternoons at Ext. 2202 to sign up.

WANTED: Small, used microwave, CHEAP. Contact Lana Whiddon, TALN, Ext. 2149.

NEEDED: DONATIONS or will purchase (if price is low enough) items to be placed in our free loan library of assistive devices such as: baby monitoring system, portable tape recorders, magnifying glass, large digital clock or watch, etc. Contact Lana Whiddon, TALN, Ext. 2149.

FOR RENT: Cottage Grove duplex. Only 20 miles from LCC to your front door. Great condition. Two-bedroom, one-bath, one-car garage. For more information call Leigh Alice Petty, TALN, Ext. 2148.

HELP KIDS! We're looking for children's books on tape. Need both the book and the tape to put in our free loan library. Also interested in adult taped books. Contact Lana Whiddon, TALN, Ext. 2149.

GOOD QUALITY 3-drawer white wicker chest, 30" tall x 28" wide x 16" deep, originally purchased at Pier 1 Imports, \$65. Julie Baker, IA, Ext. 2199, or 484-9391.

DEADLINE for The Daily is 12-noon of the day prior to publication on Mondays, Tuesdays, Wednesdays, and Thursdays. Submissions must be made in writing and include first and last name, department, and extension number. That information must be printed with ads except that a home phone may be substituted. Ads are free and limited to staff. Ads will be run twice and must be resubmitted for up to, and no more than, six times a term. Send items to The Daily through intercampus mail, U.S. mail, hand-deliver to ADM 210. E-Mail submissions to Joan Aschim are acceptable, as are 3-1/2" disks with Word or WordPerfect, for IBM or Mac.

The Daily

Published for the staff of Lane Community College

747-4501, ext. 2591

Thursday, Nov. 4, 1993

Week 6, Fall Term

Edited by Joan Aschim

Today through Saturday:

- Evangelina Rodriguez Lopez speaks today in Patsy Raney's Women's Studies class from 11:30 a.m.-12:30 p.m., in APR 223. For details, call Exts. 2352/2187.
- Multi-Cultural Center social hour, today, 1:30-3 p.m., CEN 409.
- Transition Planning Team meeting, today, 2 p.m., ADM 206.
- Faculty internship application deadline, Friday, classroom/outcomes assessment research project. Call Ext. 2576 for details.
- "Healing Racism: Education's Role," teleconference, Friday, 10 a.m., CEN 10. Call Ext. 2199.
- "Is Your 'Net' Working?" teleconference sponsored by the Lane Chapter of the American Association of Women in Community Colleges, Friday, 9-11:30 a.m. (coffee at 8:45 a.m.), Board Room. Spaces are still available; call Ext. 2199 for details.
- OSAA high school cross country meet, Saturday. Eldon Schafer Drive closed 9:30 a.m.-4 p.m. Gonyea Road open/ticket sales; tell attendant if you're working or attending class.
- White House reps meet with dislocated workers (see item below).

Clinton official to meet with dislocated workers

U.S. Department of Agriculture Under Secretary Bob Nash, chair of the committee charged with overseeing the economic assistance package attached to President Clinton's forest plan, will talk with participants in the Dislocated Worker Program at Lane on Saturday from 9-10 a.m. in APR 223/224. He will be accompanied by Oregon Economic Development Department Director Bill Scott and others. Call Training & Development Chair Patti Lake at Ext. 2848 for details.

Meet the student ambassadors



From left: Julie Krend, Chris McLean and Laura Walker

Meet Chris McLean and Laura Walker, new student ambassadors this year, and Julie Krend, returning from last year. The ambassadors lead campus tours, make high school presentations and provide office support for High School Relations.

McLean is a transfer student and member of Lane's track team. He graduated from North Valley High School in Grants Pass in 1991. His ambassadorship will help him prepare for a career as a high school math teacher. Walker is a 1992 graduate of Pleasant Hill High School. She's planning a career in secondary education. Krend is completing her final year at Lane before transferring to the U of O as an English major, in preparation for a career in education.

Learn about labels

Representatives from Avery Dennison will hold a one-hour seminar on Wednesday, Nov. 17, at 11 a.m. in the Board Room. Demonstrated will be labels for laser printers, ink jet printers, indexing labels, label printers, transparencies, and other products. Free samples will be given away and a drawing will be held for LabelPro software. All products demonstrated are available through Boise Cascade Office Products. For more information, call Steve Evans at Ext. 2453.

Attention all public employees:

The following notice was received by the President's Office on Wednesday from the state Elections Division:

"The restrictions imposed by the law of the State of Oregon on your political activities are that 'No public employee shall solicit any money, influence, service or other thing of value or otherwise promote or oppose any political committee or promote or oppose the nomination or election of a candidate, the gathering of signatures on an initiative, referendum or recall petition, the adoption of a measure or the recall of a public office holder while on the job during working hours. However, this section does not restrict the right of a public employee to express personal political views.'

"It is therefore the policy of the state and of your public employer that you may engage in political activity except to the extent prohibited by state law when on the job during working hours. (ORS 260.432.)"

Lane Community College provides a quality learning experience in a caring environment.

A beverage for your thoughts

Food Services will conduct a customer survey Nov. 8-12. A free small coffee or soda will be given out for every completed survey form.

Faculty needed for budget group

Faculty Council seeks three new members to serve on the 1993-94 Budget Review Group. The group examines budget proposals and makes recommendations to the president. Contact Joyce Fish, Math, Ext. 2392.

ASLCC makes ticket offer to "That Pioneer Road"

Student government will pay half the price of tickets to "That Pioneer Road" for the first 200 students to sign up. That means only \$3 cost to the student. Staff are asked to advise students. The play opens Friday at 8 p.m. in Performing Arts Main Theater and will run Nov. 5-6, 12-13, and 19-20. Full-price tickets are \$8 adults, \$6 students and senior citizens. The play is by journalism instructor Pete Peterson and is the true story of the lost wagon train of 1853, Lane County's own special connection to The Oregon Trail.

Martin Luther King Day planners invite participation

The Martin Luther King Day Planning Committee invites guests to attend its next meeting on Wednesday, Nov. 10, from 11:30 a.m.-12:30 p.m. in PE 205. Although a keynote speaker has been selected, the format of the day and other sessions are still open. Questions? Call Ext. 2199.

November conferences

For information about the following and other opportunities, contact Julie Baker, Ext. 2199.

- Oregon School Boards Association 47th Annual Convention, Portland, Nov. 12-14, \$105.
- "North American Association of Summer Sessions," Portland, Nov. 14-17, \$210.
- "Management Problems of the Technical Person in a Leadership Role," Eugene, Nov. 17, \$199.
- "Thinking Through Difference: Teaching Practices & Student Diversity," Chicago, Nov. 19-21, \$300.
- "The Freshman Year Experience," Washington D.C., Nov. 18-20, \$260.
- "Anger Management with Children," Wednesday, Nov. 17, 7-9 p.m., at Coast Fork Learning Center, 403 North River Road, Cottage Grove.
- "Discipline Without Punishment," Thursday, Dec. 2, 7-9 p.m., Asbury Methodist Church, 1090 Berntzen Road (Bethel area), Eugene.

JOBS

- Instructor, Chemical Dependency Program, 52% time position, Social Science Dept., Faculty, closes 11/19.

ADS

NEED RIDE TO LCC from Crow Road/Pine Grove area. I'm making plans to avoid winter driving in my sports car. Can you help? Debbie Bernhard, ABSE, Ext. 2214, or 343-8854.

THIS WEEK ONLY: 25¢ books, used, old editions, etc.. Limited supply. Bookstore, third floor Center.

ENJOY VIBRANT HEALTH and energy with super blue-green algae. To find out more, call Sydney Kissinger, Study Skills, Ext. 2072, or 746-9513.

FOR SALE: DODGE DAKOTA 4x4, 5-speed, V6, 8-ft. bed with liner, tan/gold, camper shell, AM/FM cassette, 68,000 miles, excellent condition. \$8,200 /best offer. Miriam Thompson, Student Services, Ext. 2315, 343-8676.

FOR SALE: 1980 DATSUN PICK UP, lots of miles, but runs well. Needs starter. \$700 or best offer. Mary Lou Ficker, Financial Services, Ext. 2596, home 683-2493.

MOUNTAIN BIKE, 18 speed men's Iron Mountain. \$80. Edna Grass, Financial Aid, Ext. 2371 or 343-4390.

HECETA BEACH, two lots, 50x120 each, across from Driftwood Shores on the paving, view potential. Both lots \$49,900. Jolene Bowers, 686-0908, Student Records.

FOR SALE: 1981 DATSUN 210 HATCHBACK, 5-speed, AM/FM cassette, rear wipers, great running. Great car for your daughter or son? Asking \$695. Contact Toby Finkelstein, T&D, Ext. 2853; or 683-4495.

FRANKLIN MEDICAL SPELLER/spell checker now available in the Bookstore for \$89. Also: demo model sale: Mac LC1, 2 MG, 40 HD, 12" color monitor and standard keyboard. And: Apple Computer recently dropped their back to school bundle prices. The Bookstore still has some in stock. Questions? Call Teresa Vitus at Ext. 2679.

USHERS AND TICKET TAKERS NEEDED for "That Pioneer Road." Lane staff may usher any performance on Nov. 5, 6, 12, 13, 19, and 20. Call the box office afternoons at Ext. 2202 to sign up.

DEADLINE for The Daily is 12-noon of the day prior to publication on Mondays, Tuesdays, Wednesdays, and Thursdays. Submissions must be made in writing and include first and last name, department, and extension number. That information must be printed with ads except that a home phone may be substituted. Ads are free and limited to staff. Ads will be run twice and must be resubmitted for up to, and no more than, six times a term. Send items to The Daily through intercampus mail, U.S. mail, hand-deliver to ADM 210. E-Mail submissions to Joan Aschim are acceptable, as are 3-1/2" disks with Word or WordPerfect, for IBM or Mac.

The Daily

Published for the staff of Lane Community College

747-4501, ext. 2591

Monday, Nov. 8, 1993

Week 7, Fall Term

Edited by Joan Aschim

This week:

- Food Services customer survey, cafeteria, all week.
- "Implementing Self-directed Work Teams" seminar, Tuesday, Nov. 9, 9 a.m.-4 p.m., Downtown Athletic Club. For details, call Ext. 2923.
- Election Day, Tuesday, Nov. 9. Remember to vote.
- Martin Luther King Day planning meeting, Wednesday, Nov. 10, 11:30 a.m.-12:30 p.m., PE 205.
- Network Task Force meeting, Wednesday, Nov. 10, 1:30-3 p.m., CEN 316.
- CED Cabinet, Wednesday, Nov. 10, 1:30-3:30 p.m., Board Room.
- Asian-American Issues seminar, Issues in Cultural Diversity series, Wednesday, Nov. 10, 3-4:30 p.m. and 5:30-7 p.m., APR 223. David Leung will speak. For details, call Ext. 2074.
- Board of Education meeting, Wednesday, Nov. 10, 7:30 p.m., Board Room.
- Veterans' Day staff holiday, Thursday, Nov. 11.
- Managers' Forum, Friday, Nov. 12, 8:30-10 a.m., FOR 309.
- Ellie Dumdi, Lane County commissioner, speaks Friday, Nov. 12, 2-3 p.m., CEN 402.
- "That Pioneer Road" continues Nov. 12-13, and 19-20, 8 p.m., Performing Arts Main Theater.

Board agenda

The Board of Education will meet Wednesday, Nov. 10, at 7:30 p.m. in the Board Room. At 5:30 p.m., the board will meet with Karen Garst and Marilyn Crouser of the Oregon Community College Association in the Renaissance Room, and at 6:30 p.m., the board will continue to review its policies, in the Board Room. Action items on the 7:30 p.m. agenda:

- bid award for heating and air conditioning system for the auto body shop
- appointment of instructional advisory committee members
- award for design of return-to-service aircraft hangar

Commissioner to discuss county government

Ellie Dumdi, Lane County commissioner, will discuss county government and the role of commissioners, in Steve Candee's State and Local Government class on Friday, Nov. 12, from 2-3 p.m., CEN 402. Guests are welcome.

Faculty survey undertaken

The Faculty Professional Development Team is sponsoring confidential faculty interviews to identify successful classroom strategies and instructional concerns. Between 200-300 interviews will be completed by the end of winter term. The project will complement others already in place, such as the Teachers Talking about Teaching (TTT) program.

"The goals of this project are to improve excellence in teaching and to increase faculty collaboration," says Carmel Decroos, chair of the team. Interview data will be used to shape professional development opportunities and will be widely shared with all faculty, students and the administration. Instructors in all departments have been generous with their time and support, both in sharing experiences and in listening to colleagues. In appreciation, more than 45 faculty interviewees will be honored at a luncheon on Monday, Dec. 6, in the Renaissance Room.

Still more help is needed. If you are an instructor and would like to participate in this project, call Cheryl Kempner, Study Skills, Ext. 2844; or Carmel Decroos, Family & Health Careers, Ext. 2638.

Traveling exhibit features history of women architects

The Women's Center is sponsoring an exhibit, "Matri/Archs: Pioneering Women Architects of Oregon," in the library mezzanine gallery, through November. This traveling exhibit is by the Women in Architecture Committee of the Portland Chapter of the American Institute of Architects. It showcases the projects and histories of 13 early women architects in Oregon and is the first historical survey ever done of women architects in Oregon.

Printing deadline reminder

Printing/Graphics will be closed Nov. 9. Place orders due Nov. 10 in the box on Loreta Pritchard's desk. The orders will be delivered at the regular time that day.

Lane Community College provides a quality learning experience in a caring environment.

Free flow chart software available

Purchasing Services has 10 free copies of Flow Charting 3.0 for creating every kind of flow chart from organization tables to plumbing diagrams to construction schedules. Version 3.0 includes major improvements such as laser printer support. The copies will be distributed on a first come-first served basis except that current users of Version 2.0 will have priority. If interested, call Lloyd Rain, Ext. 2208.

Insurance in retirement reminder

Classified and management employees need to remember that changing insurance carriers and/or adding dependents must be done during open enrollment prior to retirement so that the insurance coverage may continue into retirement. Faculty employees must have two years of immediate prior coverage with OEA Choice before retirement to be eligible to carry their insurance into retirement. Once retired, you cannot add a dependent or change insurance carriers.

Campus Ministry can use your canceled stamps

Last week, Campus Ministry delivered 9,524 canceled stamps to the Holy Name Sisters of Marylhurst. The stamps are processed and sold to collectors. Proceeds support the sisters' clinic in Lesotho. To donate stamps, submit entire envelopes or tear off stamps with a good amount of paper around them. Thanks to all who have donated canceled stamps to the ministry. For more information, contact Jim Dieringer, Ext. 2850.

Student help needed for high school visitation day

Recent high school graduates now at Lane are needed to help staff information tables and assist visiting high school students on Nov. 17. An hour or more commitment from 8 a.m. to noon is requested. Refer students or give their names to Shan Titus, High School Relations, Ext. 2688.

ADS

LOST: Collectively, hundreds of pounds of body fat and just as many unwanted inches. Please call or visit the new Fitness Education Center in PE 101 if you have found or wish to make donations. Contact Patrick Lanning, center coordinator, at 744-3987. Thank you!

I AM DESPERATE: I am disabled and looking for a handyperson. I will pay \$5/hour. Please contact Reva Moen, ASN/Adult Basic Ed., Exts. 2917 or 2939.

NEEDED: HOST FAMILY for Russian exchange student. Sergei Ivanov, age 22, plans to study business in Eugene during winter and spring terms, 1994. He needs room and board and will do odd jobs, yard work, or baby-sitting, in return. Please contact Jana Nelson, Math, Ext. 2393 for more information.

PLEASE HELP—Roommate from Argentina is going home. Room available Dec. 1 for \$230/month + 1/3 utilities. Great house with deck and washer/dryer. No tobacco or pets allowed. Very cozy style with a huge kitchen. Please contact Joelle Cacciatore, OSPIRG, Ext. 2166.

4-month-old male TABBY KITTEN. Friendly and good natured. Feline leukemia tested and shots. Looking for a nice home. Call Lyndell Wilken, H&PE, Ext. 2573 or 343-3080.

FOR SALE: 1 ticket for "Man of LaMancha" at the Hult for Saturday, Nov. 20, 8 p.m. Main floor, row V, 214. \$27.50. Call Maureen Rice, Ext. 2633 or 746-4450.

CHILDREN'S BOOKS REQUESTED: A bin is located in the DTC near the custodian's office to collect those kids books your family has outgrown. LEARN, our local literacy coalition, will promote literacy among at-risk children by distributing them through various agencies. Similar barrels are at participating Safeway stores. We appreciate any contribution you can make. Liz Coleman, ABE, Ext. 2919.

RECYCLE: Have your children or pre-teens outgrown their books? Let TALN recycle them. Volunteers will tape the donated books so disabled youth can enjoy the world of literature. Bring donations to IT 207, the TALN Center. Questions? Call Lana Whiddon at Ext. 2093.

NEED RIDE TO LCC from Crow Road/Pine Grove area. I'm making plans to avoid winter driving in my sports car. Can you help? Debbie Bernhard, ABSE, Ext. 2214, or 343-8854.

ENJOY VIBRANT HEALTH and energy with super blue-green algae. To find out more, call Sydney Kissinger, Study Skills, Ext. 2072, or 746-9513.

FOR SALE: DODGE DAKOTA 4x4, 5-speed, V6, 8-ft. bed with liner, tan/gold, camper shell, AM/FM cassette, 68,000 miles, excellent condition. \$8,200 /best offer. Miriam Thompson, Student Services, Ext. 2315, 343-8676.

FOR SALE: 1980 DATSUN PICK UP, lots of miles, but runs well. Needs starter. \$700 or best offer. Mary Lou Ficker, Financial Services, Ext. 2596, home 683-2493.

HECETA BEACH, two lots, 50x120 each, across from Driftwood Shores on the paving, view potential. Both lots \$49,900. Jolene Bowers, 686-0908, Student Records.

DEADLINE for The Daily is 12-noon of the day prior to publication on Mondays, Tuesdays, Wednesdays, and Thursdays. Submissions must be made in writing and include first and last name, department, and extension number. That information must be printed with ads except that a home phone may be substituted. Ads are free and limited to staff. Ads will be run twice and must be resubmitted for up to, and no more than, six times a term.

The Daily

Published for the staff of Lane Community College

747-4501, ext. 2591

Tuesday, Nov. 9, 1993

Week 7, Fall Term

Edited by Joan Aschim

Today:

- "Implementing Self-directed Work Teams" seminar, 9 a.m.-4 p.m., Downtown Athletic Club. For details, call Ext. 2923.
- Election Day. Remember to vote.

Barbara Cardwell named employee of the month



Vice President Larry Warford congratulates Barbara Cardwell.

Barbara Cardwell, administrative assistant to the Oregon Small Business Development Center Network, is Outstanding Classified Employee of the Month for November. She's been with the center since 1987, after two years with the Business Department.

"Barbara always puts the public and our customers first," said her nominators. Her responsibilities vary from keeping books to writing the center's annual report. She is courteous, professional, and has a great sense of humor, they add. Cardwell won OSBDCN's Support Staff of the Month Award in 1988, and its All-Star Award in 1990. She has a bachelor's degree in English from California State University at Northridge.

Cardwell has two daughters age 13 and 16 who are active in music, drama, basketball and cheerleading.

Board and councils to hold joint session

The Board of Education, College Council and Executive Cabinet will meet for a joint work session on Tuesday, Nov. 30, from 3-7 p.m., in the Board Room. For more information, contact Tracy Simms at Ext. 2889 or Marie Matsen at Ext. 2313.

Scholarships available

Nominations are open for the Academic All-American Team for Community, Technical and Junior Colleges sponsored by Phi Theta Kappa, the honor society for two-year colleges, and USA Today. Lane is seeking two nominees. Qualifications include current enrollment through December 1993, expected graduation in 1993-94 with at least 36 hours toward an associate degree and a grade point average of at least 3.25. Applicants must complete a biological questionnaire, write an essay, and submit letters of recommendation. Lane's nominees will also serve as candidates for the Oregon Scholars program. The scholars will travel with President Jerry Moskus to Salem for lunch with the governor. Forms and guidelines are available from Student Activities, Ext. 2337. Application deadline is Nov. 30.

A special message from Jay Marston

"Lane Community College for the past 25 years has been an enormous part of my life and has provided me with unmeasurable pleasures and satisfying work experiences. I feel incredibly grateful to the college and the community for allowing me the opportunity to explore, invent, create and teach in a manner that was rewarding for me.

"But to each of you who has touched my life, I reserve the warmest memories. In many ways LCC is like a second home, full of compassionate and caring people. Your phone calls and letters have buoyed my spirit and maintained my courage. I am so lucky to have been surrounded by such wonderful people. Thank you for your words of hope and encouragement.

"Education has occupied my entire adult life and one thing that would be most satisfying to me is to leave a vehicle to allow others to complete their educational goals and have some of the same opportunities for a full life as I have had. I have taken steps to establish an endowment in my name for students majoring in science. I would appreciate, for those that would like to do something as a tribute to our friendship and association, a contribution to the endowment fund. Gifts can be made directly to the LCC Foundation for the Jay Marston Endowment Scholarship Fund. Thanks to the generosity of my family, we will match gifts made to the fund." - Jay Marston

(Editor's note: Jay, 52, learned last month that he has cancer. Doctors believe it's untreatable.)

Lane Community College provides a quality learning experience in a caring environment.

Condolences

- Associated Students of Lane Community College secretary Jeannee Beauchaine's mother passed away last week. Jeannee can be reached in her office, fourth floor Center Building, at Ext. 2330.
- International students community program coordinator Pat Williams' father also passed away last week. Pat can be reached in Center 414, at Ext. 2165.

Speaker canceled

Ellie Dumdi will not be speaking in Steve Candee's State & Local Government class on Nov. 12.

Lane to host high school staff; information welcome

An annual workshop for high school counselors, career educators and parent advisors will be held at Lane on Tuesday, Nov. 23. If you have materials you'd like to share, especially about changes in curriculum or services, send 100 copies to Shan Titus, High School Relations, by Nov. 18 for insertion into information packets. Counselors who don't attend the workshop will also receive the packets.

Teleconference topic: ADA

"Accessing the Americans with Disabilities Act: New Information for Colleges and Universities," a teleconference produced by Rio Hondo College, will be shown Monday, Nov. 15, from 11 a.m. - 1 p.m., in CEN 10. For details, contact Julie Baker, Ext. 2199.

Mini-grants available to faculty

The Faculty Professional Development Team is soliciting proposals for projects that will stimulate and enhance the quality of teaching at Lane. Deadline for this round of proposals is Monday, Nov. 15. Applications are available from Julie Baker, Ext. 2199.

THANKS

Thanks to Thad Cowdin and Ken Hamilton from Jane Scheidecker for computer and audio visual assistance for a recent Business Development Center training; and to supervisors Debra Lamb and Shannon Kracht for freeing up their staff. Scheidecker says this team "makes my life at Lane a lot more pleasant and downright fun!"

ADS

LANE INSTRUCTOR wants to buy guitars, acoustic or electric, good, bad, or ugly. Contact David Joyce, Media Arts, Ext. 2477.

1988 DODGE DAKOTA 4x4, 5-speed, V6, long bed with liner, tan/gold, camper shell, AM/FM cassette, alarm, 68,780 miles, excellent condition. \$7,800 /best offer. Miriam Thompson, Student Services, Ext. 2315, 343-8676.

FOR SALE: 1980 DATSUN PICK UP, lots of miles, but runs well. *Has a new starter.* \$700 or best offer. Mary Lou Ficker, Financial Services, Ext. 2596, home 683-2493.

WILLIAM BRIDGES' books on display in the Bookstore. 10% discount available on orders placed before Nov. 12.

SUPER BLUE GREEN ALGAE is energy for life. Enjoy increased vitality with this food product grown in Oregon and harvested from our natural environment. To learn more, come to a meeting with Joe Yellowhawk, a distributor for 6 years, from Ashland, at First Methodist Church, 13th & Olive, Eugene, Nov. 10, 7 p.m. Sydney Kissinger, Study Skills, Ext. 2072, 746-9513.

LOST: Collectively, hundreds of pounds of body fat and just as many unwanted inches. Please call or visit the new Fitness Education Center in PE 101 if you have found or wish to make donations. Contact Patrick Lanning, center coordinator, at 744-3987. Thank you!

I AM DESPERATE: I am disabled and looking for a handyperson. I will pay \$5/hour. Please contact Reva Moen, ASN/Adult Basic Ed., Exts. 2917 or 2939.

NEEDED: HOST FAMILY for Russian exchange student. Sergei Ivanov, age 22, plans to study business in Eugene during winter and spring terms, 1994. He needs room and board and will do odd jobs, yard work, or baby-sitting, in return. Please contact Jana Nelson, Math, Ext. 2393 for more information.

PLEASE HELP—Roommate from Argentina is going home. Room available Dec. 1 for \$230/month + 1/3 utilities. Great house with deck and washer/dryer. No tobacco or pets allowed. Very cozy style with a huge kitchen. Please contact Joelle Cacciatore, OSPIRG, Ext. 2166.

4-month-old male TABBY KITTEN. Friendly and good natured. Feline leukemia tested and shots. Looking for a nice home. Call Lyndell Wilken, H&PE, Ext. 2573 or 343-3080.

FOR SALE: 1 ticket for "Man of LaMancha" at the Hult for Saturday, Nov. 20, 8 p.m. Main floor, row V, 214. \$27.50. Call Maureen Rice, Ext. 2633 or 746-4450.

DEADLINE for The Daily is 12-noon of the day prior to publication on Mondays, Tuesdays, Wednesdays, and Thursdays. Submissions must be made in writing and include first and last name, department, and extension number. That information must be printed with ads except that a home phone may be substituted. Ads are free and limited to staff. Ads will be run twice and must be resubmitted for up to, and no more than, six times a term.

The Daily

Published for the staff of Lane Community College

747-4501, ext. 2591

Wednesday, Nov. 10, 1993

Week 7, Fall Term

Edited by Joan Aschim

Meetings through Friday

- Martin Luther King Day planning meeting, today, Nov. 10, 11:30 a.m.-12:30 p.m., PE 205.
- Network Task Force meeting, today, Nov. 10, 1:30-3 p.m., CEN 316.
- CED Cabinet, today, Nov. 10, 1:30-3:30 p.m., Board Room.
- Board of Education meeting, today, Nov. 10, 7:30 p.m., Board Room.
- Managers' Forum, Friday, Nov. 12, 8:30-10 a.m., FOR 309.

Holiday

Due to Veteran's Day (Nov. 11), the next issue of The Daily will be Monday, Nov. 15.

Faculty union board to meet

The Lane Community College Education Association board will meet on Monday, Nov. 15, at 2 p.m., in the Board Room.

Open house will celebrate community education

National Community Education Day will be celebrated with an open house at the Downtown Center on Tuesday, Nov. 16, from 2-7 p.m. Free mini-classes will be offered in Chinese painting, silk-screen printing, watercolor painting, and floristry. Also offered will be blood pressure readings, tours, career guidance, English as a Second Language information, refreshments and door prizes. An "Ask Dr. Business" booth will be open as well.

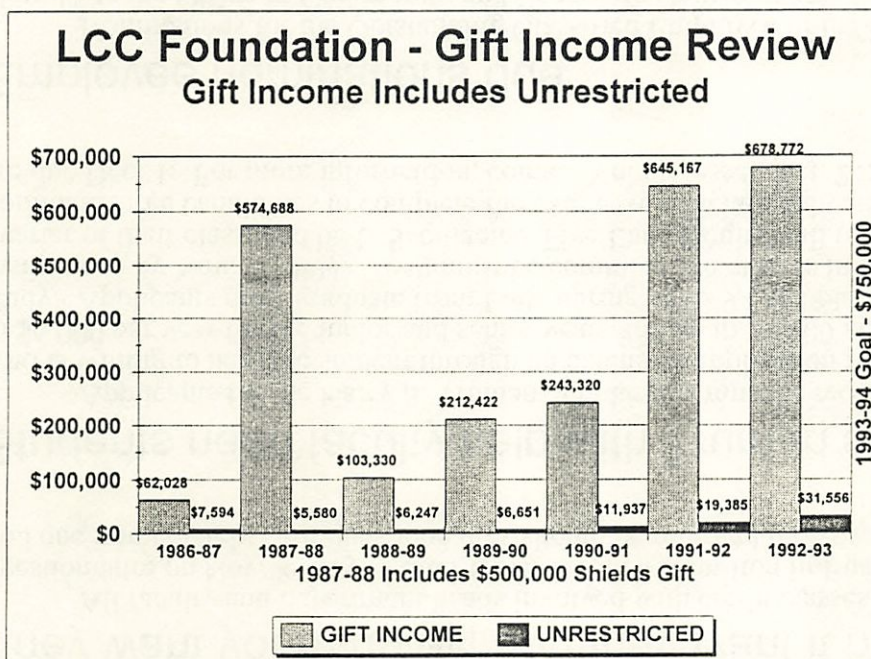
At 2:15 p.m., a computer information kiosk will be dedicated by President Jerry Moskus and volunteer Lucy Schafer, chair of the Eldon G. Schafer Endowment for Innovation. The kiosk provides students with copies of their transcripts, schedules and other information they formerly had to obtain from the Student Records office during business hours.

DTC Administrator Debra Lamb says 17,000 people took classes at the center last year. In addition to providing classroom space, the center houses the English as a Second Language program, three business programs, and the SeniorNet computer lab for senior citizens, among other things.

Student-faculty evaluation program ready to launch

Evaluations of faculty by students can begin this term. The Office of Instruction will ask faculty to have used the procedure by the end of spring term. At least one person from each department should try it this term. If you'd like to volunteer, call Dan Hodges at Ext. 2233, Beth Naylor at Ext. 2533, or Shelley Gaudia at Ext. 2446. You will be given instructions and a slightly revised list of questions.

Foundation enjoys a record year



The Foundation received \$678,772 in 1992-93, 5 percent more than last year, reports director Joe Farmer. The college fund received 5 percent of proceeds, 40 percent went to departments and programs for equipment, remodeling and staff development, and 55 percent went to scholarships and loans. Farmer says over 60 percent of Lane students need some form of financial assistance.

A highlight of this year's gifts is the Leo Paschelke Memorial Scholarship established by Lois Paschelke with a \$10,000 endowment. It provides a \$500 annual scholarship to a single mother in the women's program at Lane.

They want your survey, and they want it now

All faculty and department heads involved with credit classes at Lane should have received a questionnaire on Nov. 8. If you didn't, call Stephen Hamilton in Business at Ext. 2528 and he'll send you one immediately. All questionnaires should be returned by Nov. 15.

Students need faculty help with Truman scholarship

Applicants for the Harry S. Truman Scholarship must be recommended by a Lane faculty person who is willing to help the student through an extensive application process. The scholarship provides up to \$6,000 per year for the junior and senior years and up to \$9,000 per year for two years of graduate study. Applicants must graduate from Lane during 1993-94 and plan to be full-time juniors at four-year institutions by Nov. 1, 1994. They must be committed to careers in public service, rank in the upper quarter of their class, and be U.S. citizens. Five Lane faculty will review screening applications and can nominate three candidates to complete the extensive official application process. Screening applications are due Dec. 1. For more information, contact Velma Jesser, Ext. 2157.

Employee nominations due

Nominations for the Outstanding Classified Employee of the Month for December are due Nov. 15 to the Office of Community and Economic Development. Call Ext. 2120 if you need a form.

Volunteers needed

Lane Council of Governments and Disabled Services seek a two-person team of mature volunteer instructors for health promotion training for senior citizens. Train-the-trainer instruction will be given Nov. 15 and 16. For more information, contact Ted Stevens at 687-4432. - Naomi Soules

Lunch topic: Mothers and the religious right

"Mothers and the Religious Right" is the topic of the next Women's Program brown bag lunch to be held Thursday, Nov. 18, from 11:30 am.-1 p.m. in the Board Room. U of O Professor Linda Kintz will show a video and talk about the involvement of women in "traditional family values" politics.

ADS

HALF PRICE TICKETS (\$10.50) to the third speaker in the science, technology and society lectures at the Hult are available to Lane staff and students. Just identify yourself as a Lane person when you purchase your ticket from the Hult. The speaker is Howard Rheingold on the prospects/effects of virtual reality technology on the future of our lives on Saturday, Nov. 13, at 8 p.m. In addition, the first 40 students only can get \$5.25 tickets at the Bookstore through Friday, Nov. 12, sponsored by ASLCC. Ingrid Gram, Soc. Sci., Exts. 2427 or 2486.

TOO BUSY FOR A GARAGE SALE: Nice women's clothing, size 8-10. Some brand new calico country curtains for 3 windows. Kay Gidley, Athletics, Ext. 2555.

HOLIDAY CATERING. Cooking, baking. Exciting, economical and eclectic. Fern Rosenberg, ASLCC Child Care Co-op, Ext. 2025, or 342-5504.

BLITZ CHESS TOURNAMENT, main campus cafeteria, Saturday, Nov. 13, 9 a.m., 5 minutes/game. For information, call Gary Bricher of CIT at 342-2392.

HIDE-A-BED/love seat/full-size bed, clean, \$135. CANOE, 12', 2 life vests, wood oars, \$160 or offer. Dan Fite, ABSE, Ext. 2917.

FOR SALE: LARGE, OVAL oak/oak veneer dining table with 4 chairs plus 2 12" leaves and table pad, \$250. Chris Hainley, Fin. Aid., Ext. 2350, or Sharon Hainley, Student Health, Ext. 2665, or 726-1907.

INSTRUCTOR wants to buy guitars, acoustic or electric, good, bad, or ugly. David Joyce, Media Arts, Ext. 2477.

1988 DODGE DAKOTA 4x4, 5-speed, V6, long bed with liner, tan/gold, camper shell, AM/FM cassette, alarm, 68,780 miles, excellent condition. \$7,800 /best offer. Miriam Thompson, Student Services, Ext. 2315, 343-8676.

FOR SALE: 1980 DATSUN PICK UP, lots of miles, but runs well. *Has a new starter.* \$700 or best offer. Mary Lou Ficker, Financial Services, Ext. 2596, home 683-2493.

SUPER BLUE GREEN ALGAE is energy for life. Enjoy increased vitality with this food product grown in Oregon and harvested from our natural environment. To learn more, come to a meeting with Joe Yellowhawk, a distributor for 6 years, from Ashland, at First Methodist Church, 13th & Olive, Eugene, Nov. 10, 7 p.m. Sydney Kissinger, Study Skills, Ext. 2072, 746-9513.

USHERS AND TICKET TAKERS NEEDED for "That Pioneer Road." Lane staff may usher any performance on Nov. 5, 6, 12, 13, 19, and 20. Call the box office afternoons at Ext. 2202 to sign up.

DEADLINE for The Daily is 12-noon of the day prior to publication on Mondays, Tuesdays, Wednesdays, and Thursdays. Submissions must be made in writing and include first and last name, department, and extension number. That information must be printed with ads except that a home phone may be substituted. Ads are free and limited to staff. Ads will be run twice and must be resubmitted for up to, and no more than, six times a term. Send items to The Daily through intercampus mail, U.S. mail, hand-deliver to ADM 210. E-Mail submissions to Joan Aschim are acceptable, as are 3-1/2" disks with Word or WordPerfect, for IBM or Mac.

The Daily

Published for the staff of Lane Community College

747-4501, ext. 2591

Monday, November 15, 1993

Week 8, Fall Term

Edited by Joan Aschim

Meetings this week:

- LCCEA board meeting, today, 2 p.m., Board Room.
- International-Intercultural Committee, today, 3-4 p.m., M&A 247. Agenda: International week planning, and a report from Mary Forestieri on her trip to China. Tom Reimer, Ext. 2392.
- College Council, Tuesday, Nov. 16, 3-5 p.m., Board Room.
- Network Task Force, Wednesday, Nov. 17, 7-9 a.m., HEA 209.
- Student Services directors, Wednesday, Nov. 17, 9-11 a.m., Board Room.
- Instructional Cabinet, Wednesday, Nov. 17, 1:30-3 p.m., Board Room.
- Classified Council, Wednesday, Nov. 17, 3-5 p.m., PE 205.
- Faculty Council, Thursday, Nov. 18, 3-4:30 p.m., PE 205.

Teleconference is today

"Accessing the Americans with Disabilities Act: New Information for Colleges and Universities," a teleconference, will be shown today from 11 a.m.-1 p.m. in CEN 10.

Exhibit opens

Portland State University art instructors Joyce Bryerton and R. Garrett Masterson will show their work at the Art Department Gallery today through Dec. 10. Masterson will lecture on Tuesday, Nov. 16, at 10 a.m. in the gallery. Bryerton will show paintings and Masterson will show ceramic sculptures. The duo say their work is both visually complimentary and similarly inspired. "It is the visual representation of the world we live in, but cannot 'see' that is intriguing," they say in a joint statement, referring to images from science and technology which have inspired them. Bryerton formerly studied stained glass and ceramics at Lane. She has exhibited throughout Oregon since 1971. Masterson has exhibited since 1988 in Oregon, Washington, Idaho and Wyoming. The gallery is open Monday through Thursday from 8 a.m. to 10 p.m. and Friday from 8 a.m. to 5 p.m.

Visit the DTC open house tomorrow

National Community Education Day will be celebrated with an open house at the Downtown Center Tuesday from 2-7 p.m. Featured will be free mini-classes, free blood pressure readings, tours, career guidance, English as a Second Language information, refreshments, door prizes, and the "Ask Dr. Business" booth. At 2:15 p.m., a student information computer kiosk will be dedicated by President Jerry Moskus and volunteer Lucy Schafer, chair of the Eldon G. Schafer Endowment for Innovation.

shared decision-making news

College Council report

College Council sighted land on Nov. 2 after drifting in an ocean of role-and-purpose analysis for the last two months. Bringing council into harbor were its five original missions as defined in the shared decision-making task force report of 1991: (1) To formulate and recommend college policy; (2) To plan and recommend directions for strategic planning purposes; (3) To recommend processes for monitoring the budget and resource allocation; (4) To develop and monitor processes to resolve operational and policy issues; and (5) To review items for the board agenda. Of these, the first is most eminent, council felt.

Once it had decided what its mission was, council discussed how best to fulfill it. This led to four questions. First, should the vice presidents attend council? Yes, members concluded, after listing such benefits as better information, broader perspective, and a "forum of common interests" that would transcend the overlapping roles of governance and administration. Second, how should council set its agenda? Members will answer that at the next meeting by prioritizing current topics, then fit in new topics as needed. Third, should council be proactive or reactive? Both or either, as the case may warrant, council decided. Finally, what training would be helpful? Skills in process, leadership, shared decision making, high performance work organizations, facilitating meetings, and team building were suggested. Council next meets on Nov. 16 from 3-5 p.m. in the Board Room.

TTT workshop will focus on learning-disabled students

TTT: Teachers Talking about Teaching will offer "Working with Learning Disabled Students: Practical Classroom Tips," on Tuesday, Nov. 16, from 3-4 p.m. in CEN 420. Discussion will be lead by Linda Wong, but bring your own successful strategies. Refreshments will be provided.

Lane Community College provides a quality learning experience in a caring environment.

Help still needed for high school visitation day

High School Relations still needs recent high school graduates now at Lane to help out on Wednesday, Nov. 17, when up to 400 students are expected to visit Lane. An hour or more commitment from 8 a.m. to noon is requested. Refer students or give their names to Shan Titus, High School Relations, Ext. 2688. Visitors will attend classes, tour campus, and visit info booths in the PE lobby.

Diversity class will examine Jewish issues

The next class in the Issues in Cultural Diversity series is "Ancient Jewish Mystical Rituals" with Cliff Trolin on Wednesday from 3-4:30 p.m. and 5:30-7 p.m. For details, call Vicki Levine at Ext. 2074.

Don't miss the label seminar

The Avery Dennison seminar on labels for laser printers, ink jet printers, indexing labels, label printers, transparencies, and other products will be held on Wednesday, Nov. 17, from 11 a.m.-noon in the Board Room. Free samples will be given away and a drawing will be held for LabelPro software. For more information, call Steve Evans at Ext. 2453.

Parenting workshop offered

A workshop, "Anger Management with Children," will be held Wednesday, Nov. 17, from 7-9 p.m., at Coast Fork Learning Center, 403 North River Road, in Cottage Grove. It is free and may be attended on a drop-in basis. Call Carol Lynn Morse at Ext. 2204 for details.

Lunch topic: Mothers and the religious right

"Mothers and the Religious Right" is the topic of the next Women's Program brown bag lunch to be held Thursday, Nov. 18, from 11:30 am.-1 p.m. in the Board Room. U of O Professor Linda Kintz will show a video and talk about the involvement of women in "traditional family values" politics.

Friday: Last day for schedule changes

The STARS committee asks staff to remind students that Friday, Nov. 19, is the last day for schedule changes.

Two-year colleges drive higher ed enrollment rise

Higher education enrollment increased significantly during the 1980s and two-year colleges were responsible for most of the increase. The American Council on Education reports that between 1990 and 1991 alone, two-year colleges were responsible for 76 percent of the net increase in enrollments at post-secondary institutions. Other trends: Minority enrollment increased by 43 percent at public colleges between 1982 and 1991, compared to an 11 percent increase in enrollment at public colleges for white non-Hispanic students. By 1991, women represented 54 percent of students in higher education, compared to 51 percent in 1982. Source: Higher Education & National Affairs, Oct., 18, 1993.

Thousands attend cross country event

Athletic Director Harland Yriarte thanks everyone who helped with the statewide OSAA high school cross country championships held at Lane on Nov. 6. Some 4,000 parents, fans and athletes attended. The event is an annual fund-raiser for the Athletic Department.

Make sure your life insurance beneficiary is correct

All eligible staff should be sure that the beneficiary on their life insurance is correct and current. Changes can be made on a beneficiary change form available from Personnel Services. Questions? Call Marie Nelson at Ext. 2590.

Check first aid kits for supplies

Departments must have first aid kits available and readily accessible--behind a locked door does not qualify. The kit should contain: Gauze pads, 3" x 3" or larger; gauze pads, 8" x 10" or larger; adhesive bandages; gauze roller bandage 2" wide; triangular bandage; wound cleanser (nearby soap and water is acceptable); scissors; emergency blanket; latex gloves; and a CPR shield. Not recommended: Burn ointment, aspirin and other over-the-counter medications. Questions? Call Ext. 2665.

Display on women architects continues

"Matri/Archs: Pioneering Women Architects of Oregon," is on display in the library mezzanine gallery through November. This traveling exhibit is by the Women in Architecture Committee of the Portland Chapter of the American Institute of Architects. The exhibit is sponsored by the Women's Center.

THANKS

♥ "Thank you for all your thoughts and condolences during the past few weeks. The death of my father was a blessing due to his long Alzheimer illness. I appreciate your kindness, messages and support." - Pat Williams

♥ "Special thanks to Cheryl Coleman for introducing the wonderful world of libraries to my ABE/GED students. - Debbie Bernhard and class

ADS

ASLCC TICKET OFFER to "That Pioneer Road" still good. Staff are asked to advise students that there are some remaining tickets at \$3 each to Lane students. The pageant continues Nov. 19-20 in Performing Arts Main Theater. Regular ticket price is \$8 adults and \$6 students, senior citizens, and children. Box office hours: noon-4 p.m., Ext. 2202.

SILENT AUCTION SCHEDULED: A silent auction will be sponsored by the Lane Chapter of the American Association of Women in Community Colleges on Tuesday, Dec. 14. Refreshments will be served. For more information, contact Judith Watt in Training & Development at Ext. 2223.

SOME INTERNATIONAL STUDENTS at Lane are without roommates or family to share the holidays. If you'd like to share your Thanksgiving dinner, the International Students Community Program places students in local homes on special occasions and holidays. It's an opportunity to share American traditions with students away from home. If you can add one or more students to your dinner table, call Pat Williams, Ext. 2165.

IT'S ALMOST PARTY TIME! Make your holiday event special with live music. Professional musicians available, from solo piano to a seven-piece soul/dance band. Variety of styles. Contact Performing Arts instructor John Workman at 345-6126.

ENTERTAINMENT BOOKS still available. Use it half-a-dozen times and recover your \$30 investment. The rest is gravy! Proceeds help the Eugene Concert Choir. Contact John Bredesen, KLCC, Ext. 2478.

GLAMOUR ACQUISITION: Brother WP 3550 word processor with 12" amber monitor for sale. Used only to write film reviews. Comes with 70,000-word speller, redundancy check, punctuation alert, word count, 45,000-word thesaurus, spreadsheet program and business letter software. Less than a year old. New today, \$399; will sacrifice for \$250 OBO. Make an offer and I'll throw in a disk with film reviews. Cheryl Alonso (Diannah), E,FL&S, Ext. 2420.

FOR SALE: MY LEFT KNEE insists that I sell my 1992 purple Trek 1420 sport-touring bicycle (aluminum, 62 cm, Shimano 105/Deore components). Rode it in '92 Cycle Oregon V. Great bike. \$930 new; now \$500 or best offer. Extras included. Please contact Jerome Garger at 345-7175, or Ext. 2162.

UNIQUE HOLIDAY GIFT SALE featuring the work of Cheryl Kempner and Lisa Henry-Emmerich, plus the work of 10 additional artists. Plan to join us on Friday, Dec. 3, from 4-7 p.m., and Saturday, Dec. 4, from 10 a.m.-4 p.m., at 4270 North Shasta Loop. Gifts include porcelain vases, bowls, earrings, pins, necklaces, paintings, teddy bears, fused glass items, wreaths and ornaments. For directions call Cheryl in Study Skills at Ext. 2844.

FOR SALE: MAZDA RX7, '86, runs great, \$4,500 or offer. Also: Ford truck, '81, nice shape, 3/4-ton, uses regular gas, \$4,500 or offer. Debbie Bernhard, ABSE, Ext. 2214, or 343-8854.

WANT TO BUY: About 20 railroad ties. Betty Hunt, Computer Services, Ext. 2246.

THIS WEEK AT THE RENAISSANCE ROOM: Pineapple pick-up frAppe, lentils and vegetable soup, house salad, fillet of snapper dore' Mexican style, stir-fry beef with peppers and steamed rice, and petit pot au chocolat. Call Ext. 2697 for reservations.

I HAVE A COMPLETE LIST of the codes embedded in social security numbers that tell the state where a person first got their SSN. If interested, call Dan Hodges, testing, Ext. 2233.

FOR SALE: DINING TABLE, large, oval oak/oak veneer dining table with 4 chairs plus 2 12" leaves and table pad, \$250. Chris Hainley, Fin. Aid., Ext. 2350, or Sharon Hainley, Student Health, Ext. 2665, or 726-1907.

TOO BUSY FOR A GARAGE SALE: Nice women's clothing, size 8-10. Some brand new calico country curtains for 3 windows. Kay Gidley, Athletics, Ext. 2555.

HOLIDAY CATERING. Cooking, baking. Exciting, economical and eclectic. Fern Rosenberg, ASLCC Child Care Co-op, Ext. 2025, or 342-5504.

HIDE-A-BED/love seat/full-size bed, clean, \$135. CANOE, 12', 2 life vests, wood oars, \$160 or offer. Dan Fite, ABSE, Ext. 2917.

INSTRUCTOR wants to buy guitars, acoustic or electric, good, bad, or ugly. David Joyce, Media Arts, Ext. 2477.

1988 DODGE DAKOTA 4x4, 5-speed, V6, long bed with liner, tan/gold, camper shell, AM/FM cassette, alarm, 68,780 miles, excellent condition. \$7,800 /best offer. Miriam Thompson, Student Services, Ext. 2315, 343-8676.

FOR SALE: 1980 DATSUN PICK UP, lots of miles, but runs well. *Has a new starter.* \$700 or best offer. Mary Lou Ficker, Financial Services, Ext. 2596, home 683-2493.

DEADLINE for The Daily is 12-noon of the day prior to publication on Mondays, Tuesdays, Wednesdays, and Thursdays. Submissions must be made in writing and include first and last name, department, and extension number. That information must be printed with ads except that a home phone may be substituted. Ads are free and limited to staff. Ads will be run twice and must be resubmitted for up to, and no more than, six times a term. Send items to The Daily through intercampus mail, U.S. mail, hand-deliver to ADM 210. E-Mail submissions to Joan Aschim are acceptable, as are 3-1/2" disks with Word or WordPerfect, for IBM or Mac.

The Daily

Published for the staff of Lane Community College

747-4501, ext. 2591

Tuesday, November 16, 1993

Week 8, Fall Term

Edited by Joan Aschim

Today:

- Downtown Center Open House celebrating National Community Education Day, 2-7 p.m. Kiosk dedication by President Jerry Moskus and volunteer Lucy Schafer at 2:15 p.m.
- TTT workshop, "Working with Learning Disabled Students," 3-4:30 p.m., CEN 420.
- College Council, 3-5 p.m., Board Room. Sole topic: Agenda priorities.

1993-94 staff directories now available



Copies of the 1993/94 staff directory are available for pick up from Institutional Advancement, Ext. 2268, beginning today. A new section, Where To Find It At Lane, has been added (see pages 68-70.) This section is intended to help Lane staff direct students to various resources and services on campus. In addition, the same information is attached to today's Daily in a format suitable for posting. Thanks to Printing/Graphics staff for cover design and directory production, and to Angela Miller for project management.

Input requested for grant training sessions

Financial Services grants and contracts staff is distributing a questionnaire requesting input for training sessions during 1994. If you do not receive one and would like to participate, call Vickie McKenna, Ext. 2606.

shared decision-making news

Board report

President Jerry Moskus gave the Lane Community College Board of Education a sneak preview of his **reorganization proposal** at the Nov. 10 board meeting. He said he plans to solicit all-staff feedback on a proposal to replace branches with clusters. The clusters would be business services for Administrative Services, learners' services for Student Services, instructional services for Instruction and Community and Economic Development, and college services for the President's Office. The instructional cluster would be organized to match statewide education reform's Certificate of Advanced Mastery "strands." No personnel changes were indicated. Cluster organization would help the college meet fiscal limits, break bureaucracy, and position Lane for the future, said Moskus.

Also at the meeting, a **bid award was postponed** for air handling capabilities in the auto body shop so that staff may verify the low bidder's qualifications. Those qualifications were challenged by plumbers and steamfitters union spokesperson Michael Carmickle. In ensuing debate, a split vote determined that the award should be made later via telephone meeting after staff report their findings. Voting to postpone were Jim Pitney, Peter Sorenson, Cindy Weeldreyer. Against delay were Cindy Cable, Roger Hall and Larry Mann. Pat Riggs was absent.

Receiving unanimous approval were: (1) a resolution honoring **Dr. Karen Garst**, executive director of the Oregon Community College Association; (2) the retirement of **Charlotte Brown** from Family and Health Careers; (3) appointment of members to 29 professional-technical **advisory committees**; and (4) authorization of Richard Maris of Berry Architects to continue work on the **aviation program expansion** at the Eugene Airport.

The board discussed whether to delegate its **contract award authority** to staff. Staff recommended delegation to minimize delays in work. The board would continue as review board in case of dispute. Chair Peter Sorenson asked for more options.

The board also heard member Larry Mann's proposal to form **board-staff committees** to brainstorm ideas to meet the needs of the community. Since the hour was late, the board agreed to read a written proposal Mann distributed and discuss the idea more at a future meeting.

The meeting adjourned at 11:15 p.m. Coming up: a joint work session with College Council and Executive Cabinet on Nov. 30. The next regular board meeting will be Dec. 8.

Canceled

The Network Task Force will not meet Nov. 17. The Nov. 24 meeting still is on.

Lane Community College provides a quality learning experience in a caring environment.

Make way for 240 high school students

Tomorrow is Student Visit Day. Thanks to all faculty and department staff who will host the expected 240 high school students from 11 Lane County high schools from 8 a.m. to 12-noon. Students will have a chance to learn about two subject areas which interest them and to visit the PE lobby for an hour in the "fishbowl" to gather information about admissions, athletics, financial aid, and other student services at Lane. The high schools are excited! - Judith Gabriel

Multicultural Center offers special activities this week

The Multicultural Center is hosting special events today through Thursday as part of an open house week. The special events will be held at 2 p.m. in the east wing lounge, fourth floor Center Building.

- Today, Nov. 16, David Leung will speak on "The Chinese Experience."
- Wednesday, Nov. 17, Jan Oliver will speak on "The Change in Demographics in the School Districts."
- Thursday, Nov. 18, reception, music by Steve Candee, introduction of attending ASLCC senate members.

Spaces, rides available to William Bridges workshop

Spaces are still available at the William Bridges workshop on personal transitioning, Thursday, Nov. 18, at the Emerald Valley Inn. This presentation will feature strategies to help you understand the transition process in relation to change, and assist you in working more effectively with co-workers and students, as well as yourself. It's sponsored by the Classified Professional Development Team and is open to all staff. The sessions are 8:15 a.m.- noon and 1:15-5 p.m. Contact Julie Baker at Ext. 2199 for reservations. If you need a ride, call Alen Bahret, Ext. 2247. A van will leave campus at 7 a.m. and again at 11:45 a.m. from the southeast corner of the north parking lot (near Campus Services).

Food drive underway

Food Services and the Lane chapter of the Oregon Student Public Interest Research Group will trade a coupon for a free small soda or coffee for donated canned food, all this week. Look for the OSPIRG table in the cafeteria.

ADS

TODAY'S THE LAST DAY to make a reservation for the culinary students' Autumn Harvest Classical Cuisine Dinner to be served Thursday, Nov. 18, 6:30 p.m., cafeteria. Menu: Harlequin consommé soup, smoked salmon mousse, beef Wellington, yams, garden vegetables, seasonal green salad with chamomile, and chocolate truffle torte with raspberry sauce. \$14.50. Call Exts. 2697 or 2531 today.

BEAUTIFUL CHRISTMAS POINSETTIAS - Help support the Eugene Fillies 16-under girls fast-pitch softball team by purchasing poinsettias for your holiday decorating. Choose from three sizes in four colors. Order now for best selection. Delivery dates are Nov. 30-Dec. 4. For details call Laura Tamura, President's Office, Ext. 2301.

NEED BABY-SITTER for six-year-old boy. Will pay up to \$5/hour depending on qualifications (references, first aid/CPR training, experience, own transportation). Buck Arbuckle, E,FL&S, Ext. 2141. Home: 484-1743.

SPRINGFIELD Chamber of Commerce annual poinsettia sale; 6" pots; nice plants; \$7 each; red, white or pink. Order from Lynda Raybould, T&D, Ext. 2036. Will deliver for 10 or more to same address.

FOR SALE: MAZDA RX7, '86, runs great, \$4,500 or best offer. Also: Ford truck, '81, nice shape, 3/4-ton, uses regular gas, \$4,500 or offer. Debbie Bernhard, ABSE, Ext. 2214, or 343-8854.

IF YOU'D LIKE TO SHARE YOUR THANKSGIVING DINNER, the Lane International Students Community Program places students in local homes on special occasions and holidays. Share American traditions with students away from home. If you can add one or more students to your dinner table, call Pat Williams, Ext. 2165.

MAKE YOUR HOLIDAY EVENT SPECIAL with live music. Professional musicians available, from solo piano to a seven-piece soul/dance band. Variety of styles. Contact Performing Arts instructor John Workman at 345-6126.

ENTERTAINMENT BOOKS still available. Use it half-a-dozen times and recover your \$30 investment. The rest is gravy! Proceeds help the Eugene Concert Choir. Contact John Bredesen, KLCC, Ext. 2478.

BROTHER WP 3550 WORD PROCESSOR with 12" amber monitor for sale. Used only to write film reviews. Comes with 70,000-word speller, redundancy check, punctuation alert, word count, 45,000-word thesaurus, spreadsheet program and business letter software. Less than a year old. New today, \$399; will sacrifice for \$250 OBO. Make an offer and I'll throw in a disk with film reviews. Cheryl Alonso (Diannah), E,FL&S, Ext. 2420.

FOR SALE: MY LEFT KNEE insists that I sell my 1992 purple Trek 1420 sport-touring bicycle (aluminum, 62 cm, Shimano 105/Deore components). Rode it in '92 Cycle Oregon V. Great bike. \$930 new; now \$500 or best offer. Extras included. Please contact Jerome Garger at 345-7175, or Ext. 2162.

DEADLINE for The Daily is 12-noon of the day prior to publication on Mondays, Tuesdays, Wednesdays, and Thursdays. Submissions must be made in writing and include first and last name, department, and extension number. That information must be printed with ads except that a home phone may be substituted. Ads are free and limited to staff. Ads will be run twice and must be resubmitted for up to, and no more than, six times a term. Send items to The Daily through intercampus mail, U.S. mail, hand-deliver to ADM 210. E-Mail submissions to Joan Aschim are acceptable, as are 3-1/2" disks with Word or WordPerfect, for IBM or Mac.

The Daily

Published for the staff of Lane Community College

747-4501, ext. 2591

Wednesday, November 17, 1993

Week 8, Fall Term

Edited by Joan Aschim

Today:

- High school students visit, 8 a.m. to 12-noon, main campus.
- Student Services directors, 9-11 a.m., PE 205.
- Avery Dennison labels show, 11 a.m.-noon, Board Room.
- Instructional Cabinet, 1:30-3 p.m., Board Room.
- Jan Oliver speaks on "The Change in Demographics in the School Districts," 2 p.m., east wing lounge, fourth floor Center Building.
- Classified Council, 3-5 p.m., PE 205.

Faculty Council agenda

Faculty Council meets tomorrow from 3-4:30 in PE 205. Agenda highlights:

- Administrative withdrawal
- Accommodations for disabled students
- Student evaluations of faculty
- Early registration
- Classroom allocation
- Role and plans of Faculty Council

Facilities committee to meet

The Facilities Management Committee will meet Thursday, Nov. 18, at 3 p.m. in the Board Room. Topics on the agenda include dental facilities remodel, raptor rehabilitation center, office space for part-time electronics staff, major capital construction, and the construction priorities list.

shared decision-making news

Joint session scheduled

The Board of Education, Executive Cabinet and College Council will get together on Tuesday, Nov. 30, from 3-7 p.m. in the Board Room, to brainstorm revenue enhancement ideas and the board's role in shared decision making.

Winter term printing deadlines announced

Materials needed for winter term should be submitted to Printing/Graphics as follows:

- Packets and books by Friday, Dec. 3
- Materials for first day of winter term by Wednesday, Dec. 15

FIPSE grant proposal guidelines expected soon

The Fund for the Improvement of Postsecondary Education (FIPSE) Comprehensive Grant Program announcement should be here by early next week. The deadline for preliminary proposals is now set for Jan. 10, 1994. Call Angela Miller, Ext. 2268, for a copy of the grant guidelines.

Volleyball tournament well-attended

The state volleyball tournament hosted by Lane Nov. 11-13 attracted 9,200 spectators and generated \$8,590 from programs, t-shirt sales, and concessions. Proceeds benefit the college's athletic programs. Thanks to Bobby Foster, Sharon Foster, Gary Knapp, Bill Schmutz, and all those who helped.

Classified union elections scheduled

The Lane Community College Employees Federation will hold elections for officers on Dec. 2 at 8 a.m. in DTC 115 and at 12-noon and 5 p.m. in the Board Room.

Admissions update

Admissions already has received 512 applications from new students for winter term. The term begins Jan. 3.

Lane Community College provides a quality learning experience in a caring environment.

KLCC to host call-in program from EWEB site

KLCC/KLCO's series on water issues culminates at noon on Sunday, Nov. 21, with a call-in program hosted by Alan Siporin. The program will feature a forum of special guests at the Eugene Water and Electric Board building. The public may attend in person or call in during the program. The "Water: Thirsting for Tomorrow" series will be available as an audio cassette and curriculum guide for classroom use. Call Ext. 2224 for more information.

Instructional support staff to meet

The Instructional Support Staff Association will meet Tuesday, Nov. 23, from 1:30-3 p.m. in ELE 206 to discuss what works and what doesn't with DER reports. Jane Russell will facilitate. Anyone who works with DER reports is invited. - Pam McClelland, Ext. 2459

Radiothon results

KLCC/KLCO's fall radiothon raised \$120,000. Over 850 listeners mailed pre-radiothon donations, and 1,365 responded to the on-air pitch. Over half of the radio station's budget comes from the listening and business community. The station has never failed to reach a radiothon goal.

CLOSURE Financial Aid will be closed Friday, Nov. 19.

Meeting to be held for prospective nursing students

The Nursing Program invites prospective nursing students to a meeting on Thursday, Dec. 9, at 4 p.m. in the FOR 308. Students who already are accepted into the program, are alternates for the 1994 class, and those who plan to apply in fall 1995, are encouraged. For details, call Kay King at Ext. 2619.

Faculty funds available

Faculty professional development activity funds are available for conferences or other activities. Deadlines are the first Monday of each month through June. In most cases, decisions are made one week after the deadline. Request and approval must be made in advance of the activity date. For applications, contact Roxanne Flowerday or Pat John in Study Skills at Ext. 2439.

Keynoter

Counselor Carol Lynn Morse delivered a keynote address called "Successful Transitions in Life" to the Columbia Region International Training and Communication Conference on Oct. 30 in Eugene.

ADS

FOR SALE: COMPLETE TWIN BED. Maple head and foot with wooden frame, box springs, mattress, two sets of sheets, quilted spread with pillow shams, shades of brown. \$200. Marie Nelson, Personnel Svcs., Ext. 2590.

NEEDED BY NOV. 24: Warm blankets, clothing, for men, women and children of all sizes; also plastic forks, knives, spoons, food items, and other gift items. Take to Whiteaker School or call me for more info. I can deliver from DTC. Thanks for helping others this Thanksgiving. Lorna Funnell, Cont. Ed., Ext. 2906, or 484-1718.

FORMER LCC STUDENT MUST SELL: '87 Suburban, immaculate and beautiful. Under 40K miles, new rebuilt differential just done by Performance Assoc., 12" lift, 44" tires, owner is U.S. Navy. \$14,500/offer. Cash or certified check only. Lorna Funnell, Cont. Ed., Ext. 2906, or 484-1718.

BEAUTIFUL CHRISTMAS POINSETTIAS - Help support the Eugene Fillies 16-under girls fast-pitch softball team by purchasing poinsettias for your holiday decorating. Choose from three sizes in four colors. Order now for best selection. Delivery dates are Nov. 30-Dec. 4. For details call Laura Tamura, President's Office, Ext. 2301.

NEED BABY-SITTER for six-year-old boy. Will pay up to \$5/hour depending on qualifications (references, first aid/CPR training, experience, own transportation). Buck Arbuckle, E,FL&S, Ext. 2141. Home: 484-1743.

SPRINGFIELD Chamber of Commerce annual poinsettia sale; 6" pots; nice plants; \$7 each; red, white or pink. Order from Lynda Raybould, T&D, Ext. 2036. Will deliver for 10 or more to same address.

1988 DODGE DAKOTA 4x4, 5-speed, V6, long bed with liner, tan/gold, camper shell, AM/FM cassette, alarm, 68,780 miles, excellent condition. \$7,500/best offer. Miriam Thompson, Student Services, Ext. 2315, 343-8676.

UNIQUE HOLIDAY GIFT SALE featuring the work of Cheryl Kempner and Lisa Henry-Emmerick, plus the work of 10 additional artists. Plan to join us on Friday, Dec. 3, from 4-7 p.m., and Saturday, Dec. 4, from 10 a.m.-4 p.m., at 4270 North Shasta Loop. Gifts include porcelain vases, bowls, earrings, pins, necklaces, paintings, teddy bears, fused glass items, wreaths and ornaments. For directions call Cheryl in Study Skills at Ext. 2844.

WANT TO BUY: About 20 railroad ties. Betty Hunt, Computer Services, Ext. 2246.

DEADLINE for The Daily is 12-noon of the day prior to publication on Mondays, Tuesdays, Wednesdays, and Thursdays. Submissions must be made in writing and include first and last name, department, and extension number. That information must be printed with ads except that a home phone may be substituted. Ads are free and limited to staff. Ads will be run twice and must be resubmitted for up to, and no more than, six times a term. Send items to The Daily through intercampus mail, U.S. mail, hand-deliver to ADM 210. E-Mail submissions to Joan Aschim are acceptable, as are 3-1/2" disks with Word or WordPerfect, for IBM or Mac.

The Daily

Published for the staff of Lane Community College

747-4501, ext. 2591

Thursday, November 18, 1993

Week 8, Fall Term

Edited by Joan Aschim

Today:

- Multicultural Center Open House, 2 p.m., east lounge, fourth floor Center, music by Steve Candee.
- Faculty Council, 3-4:30, PE 205.
- Facilities Management Committee, 3 p.m., Board Room.

Florence fund-raiser a success

Bill Porter, LCC at Florence director, and his wife Roberta co-chaired the community giving portion of the campaign to build an all-events center in Florence. A total of \$1.1 million was pledged with Lane County commissioners agreeing to provide an additional \$1.8 million. The facility, to be comprised of a 20,000-square-foot multi-use area and a 450-seat theater, will be built in 1994. The facility offers many exciting opportunities for Lane, says Porter.

Employers to give job-seekers tips

The Dislocated Worker Program will present an employer panel on Friday, Nov. 19, in the Board Room from 2-4 p.m. Representatives from Guaranty, Eugene Water & Electric Board, Ross Corp., Cascade Fabrication and Symantec will address how to best present yourself in today's market, and what hiring personnel are looking for. Open to those interested. For more information, contact Toby Finkelstein at Ext. 2853.

Survey reminder

Response has been good, but we'd like to hear from *all* faculty and department heads on the part-time faculty survey. If you haven't returned your questionnaire yet, please do so today. If you need a questionnaire, call me at Ext. 2528. Thanks for making this study a success. - Stephen Hamilton, Business Department

What's it worth?

Recently, over 23,000 households were interviewed by the U.S. Bureau of the Census to obtain information about the impact of education on income. The report, "What's It Worth: Educational Background and Economic Status, Spring 1990," presents some interesting findings, such as:

- About 25% of the U.S. adult population had obtained an educational degree beyond high school.
- About 21% reported not completing high school.
- Most degrees beyond high school had significantly higher income and earnings associated with them than the next lower level degree. For example, the average monthly earning for people with associate degrees was \$1,672 while that of people with only some college was \$1,280.
- Adults with associate degrees or higher held jobs in at least three of the four months observed. People without a high school diploma held jobs in less than half the observed four months.
- About 25% of adults ages 18-64 reported receiving work-related training at some time during the four-month period. People who when community colleges for this training tended to be (a) women and (b) people with more than 12 years of education.

Contact Research, Planning & Evaluation at Ext. 2576 if you are interested in the full report.

Financial aid workshops set

Financial aid workshops to help students get started on the 1994-95 renewal applications and FAFSAs will be held Nov. 30, 10 a.m., FOR 308; Dec. 1, 2 p.m., FOR 308; Dec. 6, 10 a.m., HEA 105; and Dec. 9, 2 p.m., FOR 309.

Computer network task force needs ideas

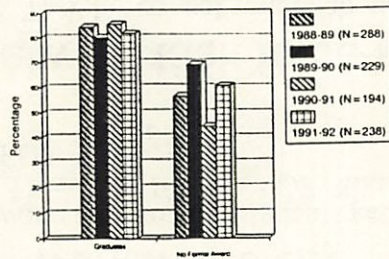
The Network Task Force seeks input about functions that should be supported on a college-wide computer network. Examples: E-Mail, document imaging and transfer, or sharing expensive resources such as color printers and fax machines. Use the space below to list additional ideas that you'd like to share with the committee. Send to Tracy Simms, President's Office, by Tuesday, Nov. 23. Thanks!

KEY BENCHMARKS

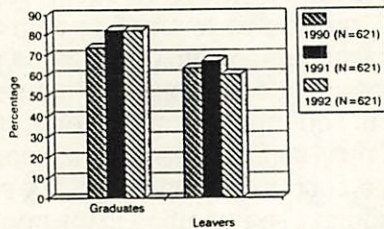
LANE COMMUNITY COLLEGE

Employment of Professional-Technical Students in Related Jobs

Student Follow-Up Surveys



Oregon Automated Follow-Up Study
1990-91 Cohort



- Accordingly to Lane's follow-up surveys and studies, a high percentage of former professional-technical students are employed in jobs related to their training.
- Lane's follow-up surveys reveal that graduates are more likely to be employed in related jobs than are leavers.
- According to the Oregon Automated Follow-Up System, 76% of the 1990-91 students are employed in Oregon in related jobs.

From the Office of Research, Planning & Evaluation.

Torch editor in 1980-81, Jeff Keating, Torch editor 1982-93, and Lynn Rea, Torch features editor 1991-92, will be on campus Friday to discuss careers in journalism. Swillinger is now a copy editor at the San Francisco Chronicle. Keating is news editor at the Ashland Daily Tidings. Rea is features editor with the Cottage Grove Sentinel. Instructor Pete Peterson invites all interested students and staff to the 1-2 p.m. discussion in APR 214. Call Exts. 2655/2474 for more information.

AAWCC news

- If you did not receive a copy of the fall 1993 newsletter of the Oregon Chapter of the American Association of Women in Community Colleges, and would like a copy, contact Julie Baker at Ext. 2199.
- Is your "net" working at Lane? If you want to network with colleagues from across campus, join the Lane Chapter of AAWCC. Membership applications are available on Julie Baker's counter second floor Administration Building.
- A silent auction will be sponsored by the Lane Chapter of the AAWCC will be held Tuesday, Dec. 14, beginning at 5:30 p.m., at Judith Watt's home. Flyers with a map are available on Julie Baker's counter, second floor, Administration Building. Refreshments will be served.

Former Torch staff will discuss journalism careers

Former Lane journalism students Heidi Swillinger,

ADS

REMODELING HOME OFFICE. Used computer furniture for sale. Two work stations, 24"x34", one printer table, 24"x48", one utility table with wheels, 24"x43". All 26" high. Dark mahogany veneer. \$15 each. Large walnut-finish bookcase with lower storage, \$25. Small metal typewriter stand, \$10. Also Imagewriter II printer, little used, with extra ribbons, \$150. Will deliver furniture for \$5 per piece. Anne Bacon, Inst. Computing, Ext. 2065, or call Jim at 746-7574.

THE POSITION FOR A HANDYPERSON has been filled. Thank you for the phone calls and inquiries. Reva Moen, ASN/ABE.

SEALED BID SALE. Oregon Health Sciences University will hold a public sealed bid sale on Friday, Dec. 3, 10 a.m.-7 p.m., and Saturday, Dec. 4, 10 a.m.-3 p.m., at its surplus warehouse at 2624 NW 26th, Portland. Items can be viewed Tuesdays and Wednesdays from 8-11:30 a.m. and Wednesdays from 4-6 p.m., or from 8-11:30 a.m. and 1-5 p.m. on Nov. 30 & Dec. 1, and are offered on an as-is where-is basis. Lloyd Rain in Purchasing has an informational flyer. Call him at Ext. 2208.

ENTERTAINMENT BOOKS still available. Use it half-a-dozen times and recover your \$30 investment. The rest is gravy! Proceeds help the Eugene Concert Choir. Contact John Bredesen, KLCC, Ext. 2478.

FOR SALE: COMPLETE TWIN BED. Maple head and foot with wooden frame, box springs, mattress, two sets of sheets, quilted spread with pillow shams, shades of brown. \$200. Marie Nelson, Personnel Svcs., Ext. 2590.

NEEDED BY NOV. 24: Warm blankets, clothing, for men, women and children of all sizes; also plastic forks, knives, spoons, food items, and other gift items. Take to Whiteaker School or call me for more info. I can deliver from DTC. Thanks for helping others this Thanksgiving. Lorna Funnell, Cont. Ed., Ext. 2906, or 484-1718.

FORMER LCC STUDENT MUST SELL: '87 Suburban, immaculate and beautiful. Under 40K miles, new rebuilt differential just done by Performance Assoc., 12" lift, 44" tires, owner is U.S. Navy. \$14,500/offer. Cash or certified check only. Lorna Funnell, Cont. Ed., Ext. 2906, or 484-1718.

DEADLINE for The Daily is 12-noon of the day prior to publication on Mondays, Tuesdays, Wednesdays, and Thursdays. Submissions must be made in writing and include first and last name, department, and extension number. That information must be printed with ads except that a home phone may be substituted. Ads are free and limited to staff. Ads will be run twice and must be resubmitted for up to, and no more than, six times a term. Send items to The Daily through intercampus mail, U.S. mail, hand-deliver to ADM 210. E-Mail submissions to Joan Aschim are acceptable, as are 3-1/2" disks with Word or WordPerfect, for IBM or Mac.

The Daily

Published for the staff of Lane Community College

747-4501, ext. 2591

Monday, November 22, 1993

Thanksgiving Week

Edited by Joan Aschim

This week:

- Thanksgiving Holiday, Thursday through Sunday, Nov. 25-28.
- Network Task Force, Wednesday, Nov. 24, 1:30-3 p.m., CEN 316.

Flight instruction program receives safety award

Flight Technology's fixed-wing flight instruction program received a special award from the Federal Aviation Administration for 150,000 hours of training without a reportable incident or injury accident. The award was presented on Nov. 20 during the Oregon Air Fair at the Portland Convention Center to Department Chair Bob Farrand and Vice President for Instruction Jim Ellison.

This is the third such award the program has received, following one in 1977 for 25,000 hours, and one in 1982 for 50,000 hours.

Lane has Oregon's only college-operated flight school and the state's only self-certification authorization. The authorization automatically provides graduates with FAA commercial pilot certificates. Otherwise, students have to complete a separate certification process. Farrand recently received a renewal of his Airman Certification Representative, or ACR, authority, which he has held since 1991.

Lane currently flies 600 to 1000 hours a month depending on weather. Students earn an annual average of one FAA certificate or pilot rating a week. The program enrolls about 70 students per term, plus more in ground school.

Campus-wide users invited to discuss DER reports

All staff who work with detailed expenditure reports (DERs) are invited to discuss their needs regarding the information presented in the reports, at a meeting sponsored by the Instructional Support Staff Association on Tuesday, Nov. 23, from 1:30-3 p.m. in ELE 206. Staff from all departments and outreach centers are invited to attend. Jane Russell will facilitate. Results will be shared with Financial Services to suggest improvements.

Financial aid application workshops set

Financial aid workshops to help students get started on the 1994-95 renewal applications and FAFSAs will be held Nov. 30, 10 a.m., FOR 308; Dec. 1, 2 p.m., FOR 308; Dec. 6, 10 a.m., HEA 105; and Dec. 9, 2 p.m., FOR 309.

Financial aid exit interviews to be held

Federal regulations require that students receiving a federal Stafford loan or SLS loan while at Lane must attend an exit interview during their last term of attendance. The interview outlines financial planning, disclosure statements, repayment procedures, how to correspond with the lender, secondary markets, loan consolidation, options for making payments, and the consequences of default. The 50-minute sessions begin on time and latecomers cannot be admitted. Fall term exit interviews will be held on Tuesday, Nov. 30, at 10 a.m. in HEA 105; 2 p.m. in HEA 269; and 6 p.m. in HEA 105; and on Wednesday, Dec. 1, at 9 a.m. in HEA 105; 1 p.m. in FOR 307; and 4 p.m. in FOR 307.

Lane hosts high school staff Tuesday

An annual workshop for high school counselors, career educators and parent advisors will be held at Lane on Tuesday, Nov. 23. Shan Titus, High School Relations, is coordinating the visit.

Truman scholarship has Dec. 1 deadline; faculty help needed

Applicants for the Harry S. Truman Scholarship must be recommended by a Lane faculty person who is willing to help the student through an extensive application process. The scholarship provides up to \$6,000 per year for the junior and senior years and up to \$9,000 per year for two years of graduate study. Applicants must graduate from Lane during 1993-94 and plan to be full-time juniors at four-year institutions by Nov. 1, 1994. They must be committed to careers in public service, rank in the upper quarter of their class, and be U.S. citizens. Five Lane faculty will review screening applications and can nominate three candidates to complete the extensive official application process. Screening applications are due Dec. 1. For more information, contact Velma Jesser, Ext. 2157.

Lane Community College provides a quality learning experience in a caring environment.

Questions and Answers Regarding Snow Closures

Staff and faculty are encouraged to share this information with students:

Q. How do we know for sure that the college is closed?

A. When the decision is made to close the college, the college immediately notifies KLCC, 89.7 FM, and other local radio and television stations. These stations make announcements as soon as they receive information. Please listen or watch. Do not call them. This interferes with their ability to bring you the most current information.

Snow closures or delays can be announced at any time as conditions worsen; however, every effort is made to report early morning closure/delay information by 6 a.m., and evening closure information by 3 p.m. Evening classes are classes that begin at or after 5 p.m.

Because conditions can improve during the day, sometimes the college will close during the day and reopen for evening classes, so it is important to stay tuned to the media.

Q. If the college is closed, should staff report for work?

A. When the college or a college center is closed, classes and activities at the facility are canceled and staff who work there should not report for work or come to the work site, unless they receive specific instructions from their supervisor or the media. If one or more facilities are closed and others are open, staff who work at the open facilities should report to work as usual.

Q. What do delays mean?

A. If opening of the college is delayed until a certain time, all classes and other activities scheduled to begin before that time are canceled for the day. For example, if the college will open at 10 a.m., all classes that start before 10 a.m. are canceled, even if the class is scheduled to continue past 10.

Q. How can people with hearing impairments learn of closures?

A. Two local television stations provide closed caption and visual displays on a limited basis: KEZI-TV (Channel 9/Cable 10) broadcasts its morning news from 6:30-7 a.m. with closed caption, and will run a visual display if possible; and KMTR-TV (Channel 16/Cable 6) will run a visual display when possible, but has no morning news show.

Q. Are there transportation alternatives?

A. When 30th Avenue seems icy, some people choose to come from the east via Franklin, or to ride the bus. In general, LTD operates buses to Lane when the college is open; however, the drivers may choose alternate routes.

Q. Will staff get paid?

A. Business Operations Manual policy states that:

When the college is officially closed, all bargaining unit members, part-time credit instructors, and management employees scheduled to work will be paid as if they worked.

If you are required to work during a closure, you are entitled to time off with pay on a straight-time basis.

If you have scheduled leave on a closure day, your leave account will be charged as originally scheduled.

Hourly employees are paid only for hours actually worked.

If the college officially closes after work has started, eligible employees receive leave with pay for the remainder of the work day.

If you are scheduled to report to work before a closure is announced, but have not reported at the time of announcement, you may take personal leave, vacation leave, compensatory time, or leave without pay for hours not worked before the closure, as approved by your supervisor.

If you choose to come to work late or leave early because of bad weather, you may take personal leave, vacation leave, compensatory time, or leave without pay, as approved by your supervisor.

If you choose to work all or part of your schedule during an official closure, you receive no additional pay or time off.

Questions? Consult Personnel Services or the BOM, "S-5, Emergency Plan," page 803.1.

Frugal Gourmet lists real American foods

Want a truly American Thanksgiving dinner? Frugal Gourmet Jeff Smith says the following American foods were unknown in Europe before Columbus sailed: Allspice, avocado, bell peppers, black walnuts, corn, cocoa, cranberries, kidney beans, lima beans, navy beans, peanuts, pimentos, pumpkins, squashes, string beans, sweet potatoes, turkey, vanilla beans, and wild rice.

High school athletic events inspire compliments

Bud Lewis of the Oregon School Activities Association wrote a letter of thanks to Lane for hosting recent statewide track and field and volleyball competitions. He wrote: "We estimated that both these events drew over 10,000 spectators Everything went smoothly which makes for a lot of happy coaches and participants. Certainly one thing that jumped out at me was the willingness of your certified staff and support staff to help with these events. It's great to see that these expert people do care about what our young people are involved in and, at the same time, their expert help with these contests makes things flow very smoothly."

JOBS

- Cataloging Aide, half time, Library, Technician V, closes 11/23.
- Nursing Instructor, 80% time, Associate Degree Nursing Program, Faculty, closes 12/3.
- Speech Instructor, English Foreign Language & Speech Department, Faculty, closes 12/10.
- Writing and Literature Instructor, English Foreign Language & Speech Department, Faculty, closes 1/21/94.

THANKS

- A special thanks to Jean Geiger in the Business Department. She created some slides in Harvard Graphics that made my presentation to the Software Association Conference look like \$1mm! - Jane Scheidecker

ADS

FOR SALE: PHEASANTS. SERVE SOMETHING wild for the holidays. Delicious smoked fresh dressed or live. \$10-\$12. Will deliver to LCC or DTC. Jim Pitney, Board of Education member. 998-2711.

'85 MUSTANG LX parts: 5.0 engine, 5-speed transmission, lots of body parts, and bra. Make offer. Call 688-9260 or 688-6833. Eric Flaherty, Campus Services, Ext. 2543.

MULTI-PURE WATER FILTERS, the best filter available, provides virtually 100% pure water in your home. Wholesale prices \$180-\$280, free trial period, zero-interest time payments (one year). What else do you need to make the plunge to optimum water quality? Can you really afford not to drink pure water? Robert Sposato, 683-2681 home; Ext. 2945 LEAP.

FENDER SRATOCASTER electric guitar, excellent condition, red, \$375/OBO. 344-2754. Judith Gabriel, College High, Ext. 2699.

K-2 SKI'S, 5500s, 200cm, great condition, with great Marker bindings. \$230/OBO. 344-2754. Judith Gabriel, College High, Ext. 2699.

HOUSE FOR SALE: Cottage Grove, 3-bedroom, 2-bath, large open living area, natural gas, wood stove, covered patio, low maintenance yard, near schools. Great deal at \$64,900. Vena Wright, CCRC, Ext. 2129, or 942-4833.

FOR SALE: Set of four Honda Civic rims with studded tires (13"), like new. \$250. Cathy Churchwell, Business Dept., Ext. 2152, home 344-6876.

FOR SALE: VINTAGE GIBSON GUITAR. Classic C-1 (made 1966-69), good condition. Blue book plus new strings, \$240. Ingrid Gram, Social Science, Exts. 2846/2427.

PRE-CHRISTMAS CLOSET CLEARANCE sale on seldom or never-used semi hi-tech (for me) appliances: Smith Corona lightweight portable electric typewriter, \$50 (new about \$100); Moulinex LaMachine II food processor with attachments, \$50 (new about \$100); VCR plus programmer, never used, \$40 (new at Freddie's, \$50). Ingrid Gram, Social Science, Exts. 2846/2427.

NEEDED: MORE USED BOOK donations for the library's used book sale to be held Dec. 1-3. Unload your shelves and call us at Ext. 2220. Thanks for your help.

CHRISTMAS WREATHS, Exquisitely designed Christmas wreaths and door swags at wholesale prices. Created with noble and Douglas fir, elegantly adorned with juniper and cedar, and accented with a festive red bow. Door swags: \$9. Wreaths, 12": \$12.50; 14": \$24.50. Larger wreaths available. Order early for early deliveries. I will take orders until Dec. 14. Last delivery: Dec. 17. Call Geri Meyers, 747-0429, or Ext. 2296 in Counseling.

FOR SALE: Older, good quality Craftsman radial arm saw with blades and complete instruction manual. Saw sits on heavy-duty steel rolling base with 4 drawers. \$150. David Joyce, Media Arts, Ext. 2477.

USED COMPUTER FURNITURE for sale. Two work stations, 24"x34", one printer table, 24"x48", one utility table with wheels, 24"x43". All 26" high. Dark mahogany veneer. \$15 each. Large walnut-finish bookcase with lower storage, \$25. Small metal typewriter stand, \$10. Also Imagewriter II printer, little used, with extra ribbons, \$150. Will deliver furniture for \$5 per piece. Anne Bacon, Inst. Computing, Ext. 2065, or call Jim at 746-7574.

DEADLINE for The Daily is 12-noon of the day prior to publication on Mondays, Tuesdays, Wednesdays, and Thursdays. Submissions must be made in writing and include first and last name, department, and extension number. That information must be printed with ads except that a home phone may be substituted. Ads are free and limited to staff. Ads will be run twice and must be resubmitted for up to, and no more than, six times a term. Send items to The Daily through intercampus mail, U.S. mail, hand-deliver to ADM 210. E-Mail submissions to Joan Aschim are acceptable, as are 3-1/2" disks with Word or WordPerfect, for IBM or Mac.

The Daily

Published for the staff of Lane Community College

747-4501, ext. 2591

Tuesday, November 23, 1993

Thanksgiving Week

Edited by Joan Aschim

Today:

- DER report meeting, 1:30-3 p.m., ELE 206.
- Accreditation Steering Committee, 3-4:30 p.m., PE 205.
- Board of Education telephone conference meeting, 4 p.m., President's Office, to discuss and vote on bid award to Lebanon Servco for auto paint shop air handling system improvements.

Daily schedule

The Daily will not be published Monday, Nov. 29.

Software to be demonstrated

Bill Griffiths will demonstrate Director 3.1 on Tuesday, Nov. 30, at 3 p.m. in M&A 254. Director can be used to produce multi-media courseware for Mac and IBM platforms. The Mathematics Department purchase the software with Perkins grant funds.

Marketing projects funded

Six projects were awarded marketing grants in the most recent round of grant applications. The next marketing grant deadline is Jan. 20. Applications are available from Angela Miller, Institutional Advancement, at Ext. 2268. Recent recipients are:

- Roger Ebbage, Science, \$400, to create display materials to promote the Energy Management Technician Program.
- Sue Ferguson, ASLCC Child Care Co-op; Kerin Hoag, Child Care Resource Connection; Linda Pompel, Family and Health Careers; \$630, to create a brochure to describe and promote the variety of child care resources available at Lane.
- Carol Lynn Morse and Greg Fishwick, Counseling, \$200, toward printing of invitations for the 35th anniversary of the Community Center for Family Counseling's "Saturday Circus."
- Ed Bromley, Industrial Technology, \$220 for newspaper ads to promote December 11 Welding Program Open House.
- Ron Mitchell and Nancy Peyron, Social Science, \$1,000, to buy advertising space and to create information packets to promote the Chemical Dependency Counselor Training Program.
- Tamara Pinkas, \$500, to use direct mail to promote Cooperative Education to students in selected college programs.

Winter term printing deadlines announced

Packets and books needed for winter term should be submitted to Printing/Graphics by Friday, Dec. 3. Materials for the first day of winter term should be submitted by Wednesday, Dec. 15.

Holiday mail procedure announced

Due to the Thanksgiving holiday, main campus staff are asked to bring their outgoing and intercampus mail to the Mailroom between 12-3:30 p.m. on Monday, Nov. 29, and to pick up their incoming mail, in lieu of regular Mailroom pick up and delivery services. The Downtown Center will receive usual service. Thank you. - Mailroom staff, Ext. 2575

Foodservices adjusts schedule for the holiday

Foodservices will be open Wednesday, Nov. 24 from 7 a.m.-5 p.m. It will resume regular hours on Monday, Nov. 29. Happy Thanksgiving from all your friends at Foodservices.

Insurance rate increase may affect payroll deduction

Effective Jan. 1, 1994, insurance rates will increase and payroll deductions could also increase. Some staff members may have a payroll deduction for the first time. All new deductions will be taken from the December paycheck. New insurance premium rate charts for classified, faculty and management have been placed in the forms rack just inside the door of the Personnel Services Department. You can pick up a copy from 7 a.m. to 5 p.m., Monday through Friday. Contact Marie Nelson, Ext. 2590, if you have questions.

Lane Community College provides a quality learning experience in a caring environment.

Student jazz ensembles to perform

Performing Arts presents in concert student jazz groups, Tuesday, Nov. 30, at 8 p.m. in the Performance Hall of the Performing Arts Theater. The Lane Jazz Ensemble, directed by Ron Bertucci, will perform music by Frank Foster, David Metzger, Les Hooper, Miles Davis and more. The vocal jazz ensemble, Spectrum, will perform under the direction of Kimberly DeMoss. Tickets are \$6 for adults and \$4 for seniors, students and children. Proceeds will fund student scholarships for individual music lessons at Lane. Tickets may be ordered by calling the Box Office at Ext. 2202, from noon-4 p.m., Monday through Friday.

Teleconference to explain use of copyrighted material

"Educational Use of Copyrighted Material: Infringement or Fair Use?" is a free teleconference to be shown at Lane on Thursday, Dec. 2, at 11:30 a.m., in CEN 10. Panelists will be Gail Daly, director of Underwood Law Library and assistant professor of law at Southern Methodist University; Ray Nimmer, professor of copyright law and computer law at the University of Houston; and Mike O'Neil, copyright attorney and counsel for the Dallas County Community College District. For more information and to register, call Ext. 2260.

League survey of faculty postponed

The President's Office has received word that the League for Innovation faculty survey on teaching and technology will be postponed until January. Surveys should be distributed the second week of the term. Completed surveys will be due the first part of February and results will be available in April. Questions? Call Marie Matsen at Ext. 2313.

Note correct child care telephone extensions

Lane is home to three child care programs and services:

- Child Development Center (Infant/Toddler Center and Preschool), Ext. 2519.
- ASLCC Child Care Co-op, Ext. 2025
- Child Care Resource Connection, Ext. 3954

The CDC extension is incorrect on "Where to Find it at Lane" distributed with the Nov. 16 Daily, and on page 68 of the staff directory; please update your copies.

ADS

GREAT TRAVEL OPPORTUNITY: *Landscapes of England* 10 day EF Educational Tour, departing June 9; \$1,315 fee includes round trip airfare from Portland, 8 nights hotel (private facilities), continental breakfast and dinner daily, 8 visits to special attractions and 3 optional excursions, one evening of theater, all transfers and transportation, 3 day Visitor Travelcard valid on Underground and some sightseeing discounts, professional EF Tour Guide. Travel with a group of LCC students and folks with Sharon Thomas, LCC instructor of English literature, as counselor/chaperone. Informational meeting, application forms, on Monday, Nov. 29, at 2 p.m. - Sharon Thomas, English Dept.. Ext. 2145.

FREE! Institutional Advancement has four certificates that are good for any CareerTrack seminar. The certificates are worth up to \$49 and valid through Feb. 1, 1994. if you could use one or more of them, call Angela Miller, Ext. 2268.

CHRISTMAS WREATHS, Exquisitely designed Christmas wreaths and door swags at wholesale prices. Created with noble and Douglas fir, elegantly adorned with juniper and cedar, and accented with a festive red bow. **Door swags: \$9. Wreaths, 12": \$12.50; 14": \$14.50. Larger wreaths available.** Order early for early deliveries. I will take orders until Dec. 14. Last delivery: Dec. 17. Call Geri Meyers, 747-0429, or Ext. 2296 in Counseling.

MY 23-YEAR-OLD DAUGHTER is still looking for a roommate to share her 2 bedroom apartment, or a room to rent in a private home. Contact Julie Baker, Ext.. 2199 or 484-9391.

MAKE YOUR HOLIDAY EVENT SPECIAL with live music. Professional musicians available, from solo piano to a seven-piece soul/dance band. Variety of styles. Contact Performing Arts instructor John Workman at 345-6126 or Ext. 2209.

FOR SALE: PHEASANTS. SERVE SOMETHING WILD for the holidays. Delicious smoked fresh dressed or live. \$10-\$12. Will deliver to LCC or DTC. Jim Pitney, Board of Education member. 998-2711.

'85 **MUSTANG LX** parts: 5.0 engine, 5-speed transmission, lots of body parts, and bra. Make offer. Call 688-9260 or 688-6833. Eric Flaherty, Campus Services, Ext. 2543.

MULTI-PURE WATER FILTERS, the best filter available, provides virtually 100% pure water in your home. Wholesale prices \$180-\$280, free trial period, zero-interest time payments (one year). What else do you need to make the plunge to optimum water quality? Can you really afford not to drink pure water? Robert Sposato, 683-2681 home; Ext. 2945 LEAP.

DEADLINE for The Daily is 12-noon of the day prior to publication on Mondays, Tuesdays, Wednesdays, and Thursdays. Submissions must be made in writing and include first and last name, department, and extension number. That information must be printed with ads except that a home phone may be substituted. Ads are free and limited to staff. Ads will be run twice and must be resubmitted for up to, and no more than, six times a term. Send items to The Daily through intercampus mail, U.S. mail, hand-deliver to ADM 210. E-Mail submissions to Joan Aschim are acceptable, as are 3-1/2" disks with Word or WordPerfect, for IBM or Mac.

The Daily

Published for the staff of Lane Community College

747-4501, ext. 2591

Wednesday, November 24, 1993

Thanksgiving Week

Edited by Joan Aschim

Today: Network Task Force, 1:30-3 p.m., CEN 316.

shared decision-making news

College Council report

Mindful of its primary role in recommending policy, College Council prioritized a list of 15 agenda items at its Nov. 16 meeting.

High priority:

- Tuition waiver policy review by winter term.
- Downtown Center task force report/outreach center policy.
- Diversity policies and strategies.
- Budget reduction feedback to Executive Cabinet.
- Training for council.
- Restructuring.
- ROTC proposal from the U of O.

Medium priority:

- Housing task force.
- Drug and alcohol policy.

Low priority:

- Grant writing information.
- Relationship with other councils.

Referred off the agenda:

- Contract award board.
- Budgeting process.
- Investment opportunities update.
- Additional membership.

Scheduled for the **Nov. 30 joint work session** with the Board of Education and Executive Cabinet is the topic of budget reductions. Scheduled for council's **next regular meeting on Dec. 7** are restructuring and tuition waivers. College Council meetings are open to all interested staff and students. Copies of minutes are available from the President's Office, Ext. 2200.

Daily schedule

The Daily will not be published on Monday, Nov. 29.

Financial aid exit interviews set

Exit interviews for students receiving a federal Stafford loan or SLS loan will be held on Tuesday, Nov. 30, at 10 a.m. in HEA 105; 2 p.m. in HEA 269; and 6 p.m. in HEA 105; and on Wednesday, Dec. 1, at 9 a.m. in HEA 105; 1 p.m. in FOR 307; and 4 p.m. in FOR 307.

Financial aid workshops set

Workshops to help students with 1994-95 financial aid renewal applications and FAFSAs will be held Nov. 30, 10 a.m., FOR 308; Dec. 1, 2 p.m., FOR 308; Dec. 6, 10 a.m., HEA 105; and Dec. 9, 2 p.m., FOR 309.



These community leaders were among the hundreds of people who attended the Downtown Center Open House celebrating National Community Education Day on Nov. 16. They helped dedicate a computer information kiosk for students called ATLAS as part of the day's festivities. From left: Dan Dunnington, LCC Foundation member; Lucy Schafer Kinsman, LCC Foundation member and chair of the Eldon G. Schafer Endowment for Innovation which helped fund the kiosk; LCC President Jerry Moskus; Eugene Mayor Ruth Bascom; and John Alvord, LCC Foundation president.

Chamber orchestra and choirs to perform

The Lane Chamber Orchestra will be joined by the Lane Concert Choir and Lane Chamber Choir in a concert on Thursday, Dec. 2, at 8 p.m. in Performing Arts main theater. Tickets are \$6 adults and \$4 senior citizens, students, and children. Proceeds will help fund scholarships for individual music lessons.

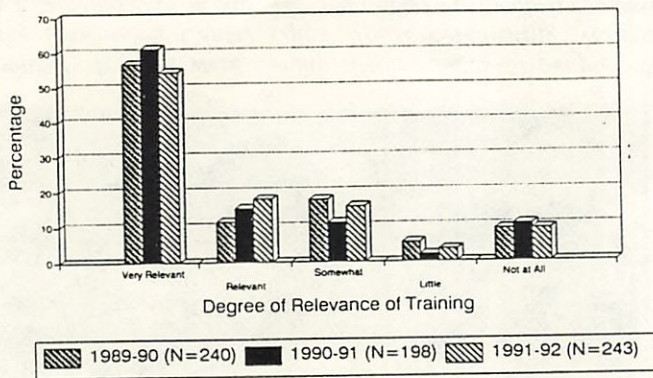
Ron Bertucci directs the orchestra and Kimberly DeMoss directs the choirs. "Sonfonia No. 2 in a Major" by William Boyce, "Concertone in C Major K.180 for Two Violins and Orchestra" by Mozart, and "Gloria in D Major" by Vivaldi will be performed.

Call the box office weekday afternoons at Ext. 2202 for tickets or more information.

Lane Community College provides a quality learning experience in a caring environment.

KEY BENCHMARKS - LANE COMMUNITY COLLEGE

Relevance of Former Students' Professional Technical Training



- Of former 1991-92 professional technical students, 77% were employed full- or part-time.
- Of these employed former students, 75% were working in jobs for which they had been trained at Lane. Graduates were more likely to be working in related jobs than were no formal award completers.
- Of the employed students, 72% felt that Lane's preparation was "very relevant" or "relevant" to their jobs.

FROM THE OFFICE OF RESEARCH, PLANNING & EVALUATION.

Holiday mail procedure reminder

Due to the Thanksgiving holiday, main campus staff are asked to bring their outgoing and intercampus mail to the Mailroom between 12-3:30 p.m. on Monday, Nov. 29, and to pick up their incoming mail, in lieu of regular Mailroom pick up and delivery services. The Downtown Center will receive usual service. Thank you.

Breast cancer is lunch topic

A panel of women, including a physician's assistant, a naturopath and a breast cancer survivor, will discuss breast cancer awareness, prevention, therapies and survival at a Women's Program brown bag lunch to be held Monday, Dec. 6, from 12-1 p.m., in the Board Room. It's free.

THANKS

Over 250 staff and community members enjoyed a half-day presentation by Dr. William Bridges on "Transitions." Most of us attending discovered we were all experiencing a transition in our personal or professional life - or both! A round of applause to Classified Professional Development Team members Alen Bahret and Ginger Yamamoto, drivers for those needing transportation; Rick Lyons for introducing our speaker; Gloria Jarvis and Pat Chase for their help with lunch tickets; Cindy Dietz and Sharon McCarroll for their 7 a.m. arrival to set the stage for our enjoyment, and to Colleen Cairney for being our fearless leader. A special thank you to the Management Professional Development Team for their contribution of \$1,000 toward the day's activities, and the President's Office for its support. - Julie Baker, Ext. 2199.

ADS

IT ISN'T PRETTY BUT IT IS RELIABLE. 1981 Datsun pick up, king cab, jump seats, air, AM/FM, automatic transmission, good tires, new brakes, 145,000 miles and still going strong. Would make a great commuter vehicle (25 mpg) or carry-all for small acreage. \$600 OBO. Bob Boettcher, Science, Ext. 2446, or 683-4918.

GREAT TRAVEL OPPORTUNITY: *Landscapes of England* 10 day EF Educational Tour, departing June 9; \$1,315 fee includes round trip airfare from Portland, 8 nights hotel (private facilities), continental breakfast and dinner daily, 8 visits to special attractions and 3 optional excursions, one evening of theater, all transfers and transportation, 3 day Visitor Travelcard valid on Underground and some sightseeing discounts, professional EF Tour Guide. Travel with a group of LCC students and folks with Sharon Thomas, LCC instructor of English literature, as counselor/chaperone. Informational meeting, application forms, on Monday, Nov. 29, at 2 p.m. - Sharon Thomas, English Dept. Ext. 2145.

FENDER SRATOCASTER electric guitar, excellent condition, red, \$375/OBO. 344-2754. Judith Gabriel, College High, Ext. 2699.

K-2 SKI'S, 5500s, 200cm, great condition, with great Marker bindings. \$230/OBO. 344-2754. Judith Gabriel, College High, Ext. 2699.

HOUSE FOR SALE: Cottage Grove, 3-bedroom, 2-bath, large open living area, natural gas, wood stove, covered patio, low maintenance yard, near schools. Great deal at \$64,900. Vena Wright, CCRC, Ext. 2129, or 942-4833.

FOR SALE: Set of four Honda Civic rims with studded tires (13"), like new. \$250. Cathy Churchwell, Business Dept., Ext. 2152, home 344-6876.

FOR SALE: VINTAGE GIBSON GUITAR. Classic C-1 (made 1966-69), good condition. Blue book plus new strings, \$240. Ingrid Gram, Social Science, Exts. 2846/2427.

PRE-CHRISTMAS CLOSET CLEARANCE sale on seldom or never-used semi hi-tech (for me) appliances: Smith Corona lightweight portable electric typewriter, \$50 (new about \$100); Moulinex LaMachine II food processor with attachments, \$50 (new about \$100); VCR plus programmer, never used, \$40 (new at Freddie's, \$50). Ingrid Gram, Social Science, Exts. 2846/2427.

FOR SALE: Older, good quality Craftsman radial arm saw with blades and complete instruction manual. Saw sits on heavy-duty steel rolling base with 4 drawers. \$150. David Joyce, Media Arts, Ext. 2477.

DEADLINE for The Daily is 12-noon of the day prior to publication on Mondays, Tuesdays, Wednesdays, and Thursdays. Submissions must be made in writing and include first and last name, department, and extension number. That information must be printed with ads except that a home phone may be substituted. Ads are free and limited to staff. Ads will be run twice and must be resubmitted for up to, and no more than, six times a term.

The Daily

Published for the staff of Lane Community College

747-4501, ext. 2591

Tuesday, November 30, 1993

Week 10, Fall Term

Edited by Joan Aschim

Today:

- Joint work session, Board of Education, College Council, Executive Cabinet, 3-7 p.m., Board Room.
- Director 3.1 software demonstration, 3 p.m., M&A 254.
- Student jazz concert, 8 p.m., Performing Arts Main Theater. Call Ext. 2202 for more information.

Speaker

Lauren Holland, Lane County district court judge, will speak in Steve Candee's State & Local Government class on Wednesday, Dec. 1, from 2-3 p.m., in CEN 402. Guests welcome.

shared decision-making news

Faculty Council report

Faculty Council decided at its Nov. 18 meeting to invite Vice President for Instruction Jim Ellison to a future council meeting to discuss the development of a mutually satisfactory administrative withdrawal policy. On Nov. 3, Ellison issued a memo promising to withdraw the mandatory "F" grading policy for fall term.

Beth Naylor of Family and Health Careers presented an update on the new faculty evaluation form. Naylor says a volunteer group of instructors will test a pilot form at the end of fall term.

Disabled Students Coordinator Delores May requested feedback from the council on her recommendation for a statement on all course syllabi which would inform students of services available through Disabled Student Services.

- by Arlene Hougland for The Daily

Classified Council report

At its Nov. 17 meeting, Classified Council discussed the possibility of obtaining total quality management training for the council. Members decided to research possible options for future consideration.

To improve council representation from the satellite campuses, the council decided to hold its February meeting at the Downtown Center.

- by Arlene Hougland for The Daily

Agenda items sought

Faculty Council is calling for agenda items. If there is an issue you feel the council should address, please send it to or call Allan Kluber, Co-op Ed/Social Science, Ext. 2011, or Joyce Fish, Math, Ext. 2392. Faculty Council's next meeting will be Thursday, Dec. 9, from 3-4:30 p.m. in the Board Room.

Faculty voice needed on Marketing Council

Wanted: If you are an instructor interested in how the college communicates with students and the public, the Marketing Council wants you. There are two unfilled faculty slots on the current council. The council meets once each quarter. Meetings will be held Jan. 28 and May 6 from 10-11:30 a.m. If you want to join the council or have questions, call Diane Dann at Ext. 2592.

Holiday ball to be held

The Lane Ballroom Dance Club and Intramurals will sponsor a holiday ball on Friday, Dec. 3, from 8-11 p.m., in PE 203. Live music by Swing Shift will be featured. Admission is \$2 students, \$3 general public. Semi-formal dress suggested. - Nancy Anderson, H&PE, Ext. 2545

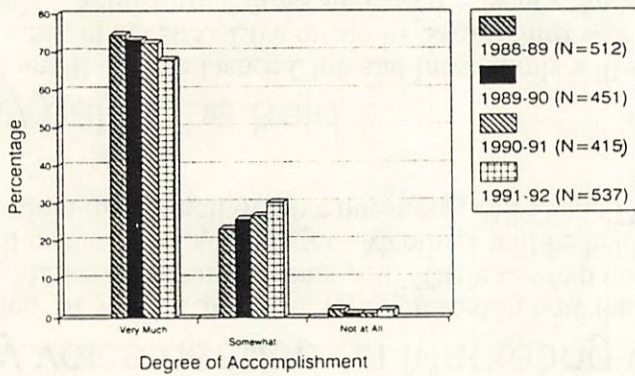
Grants group to meet

The Resource Development Group will meet Thursday, Dec. 2, from 3-4:40 p.m., in PE 205. For more information, call Sarah LaMaster at Ext. 2312.

Lane Community College provides a quality learning experience in a caring environment.

KEY BENCHMARKS - LANE COMMUNITY COLLEGE

Former Students Indicating the Degree To Which They Accomplished Their Goals



- In all years, about 77% of the graduates and over 50% of the "no formal award completers" reported they "very much" achieved their goals at Lane.
- No formal award completers tend to be less satisfied with their goal attainment. In 1990-91 and 1991-92, 40-45% said they "somewhat" met their goals.

FROM THE OFFICE OF RESEARCH, PLANNING & EVALUATION.

Don't drowse: Come by and browse

The Library will hold a book sale Dec. 1-3 from 10 a.m.-2 p.m. in the Center Building second-floor lobby. Prices are \$1 hardbound, \$.50 paperbound.

INTERNET topic of teleconference

An interactive national teleconference about INTERNET will be shown on Thursday, Dec. 2 in CEN 10 at 11 a.m. With INTERNET, a network of interconnected networks, and the creation of the National Education and Research Network, the technological groundwork is being laid for an informational infrastructure that will lead to revolutionary changes in the way people work and interact. This teleconference will examine current and future use of INTERNET.

ADS

NEED: Good home for Toby, a lovable 28-lb. dog of keeschound and terrier mix. Toby is being displaced due to merging households. Has been indoor dog, now an outdoor dog, but would love to be indoor dog again. Very good with children. Fixed, has shots. Dixie Maurer-Clemons, Co-op Ed., Ext. 2506, or 343-3028.

FOR IMMEDIATE SALE: Good washer/dryer, \$110 each, \$200 for pair. Cash, certified check, firm. Lorna Funnell, Cont. Ed., Ext. 2252.

FORMER LCC STUDENT must sell '87 Suburban, immaculate and beautiful. Under 40K miles, new rebuilt differential, 12" lift, 44" tires, owner in US Navy. \$14,500/offer. Cash or certified check only! Lorna Funnell, Cont. Ed., Ext. 2252.

MACINTOSH Powerbook 100 for sale, still under original warranty. 4 meg RAM, 20 meg hard drive, great software and special books, \$895. Diane Rogers, Social Science, 484-6979.

DINING TABLE AND 4 CHAIRS for sale, oatmeal wool tweed seat covers, Scan Design, teak, excellent condition. 46"x71" closed, 46"x110" with 2 leaves added. Very elegant. Cost \$1,517 new 3 years ago. Now \$995. Diane Rogers, Social Science, 484-6979.

FOR SALE: Like new Vari-Kennel for dog, medium size (32"L x 22"W x 23" H). New, \$65; will sell for \$35. Bob Prokop, Media Arts, 345-5055.

AHHH! Got tension? Get release. Got time? Get Russell! The ASLCC Child Care Co-op has a licensed massage therapist who comes once a week for a great 15-20 minute break and he can come to your department too. For a reference, call Sue Ferguson at Ext. 2025, or Russell directly at 744-7009.

NOMINATE A STUDENT to receive holiday assistance. The Bookstore will sponsor a bake sale to help provide a special Christmas for one or more LCC student families in need. We're looking for students receiving little or no Christmas assistance. Written nominations need to be submitted before 5 p.m. on Dec. 16. Forms are available in the Bookstore. The bake sale will be Dec. 13 from 8 a.m.-2 p.m. in Center Building second-floor lobby.

FOR SALE: LARGE, FORMAL oval dining room table, hardwood with oak veneer. 45" wide x 60" long, comes with two (count 'em, two!) 18" leaves. (That's 91" long, or 7-1/2 feet for you arithmetic buffs.) You can put the whole family around this one. Has four high-back chairs, two with arms, and comes with protective table pads. Chairs could use recovering. Asking \$250. Contact Sharon Hainley, Student Health, Ext. 2665, or Chris Hainley, Financial Aid, Ext. 2350, or call 726-1907 eves.

IT ISN'T PRETTY BUT IT IS RELIABLE. 1981 Datsun pick up, king cab, jump seats, air, AM/FM, automatic transmission, good tires, new brakes, 145,000 miles and still going strong. Would make a great commuter vehicle (25 mpg) or carry-all for small acreage. \$600 OBO. Bob Boettcher, Science, Ext. 2446, or 683-4918.

HOW TO USE THE DAILY: Deadline for The Daily is 12-noon of the working day prior to publication on Mondays, Tuesdays, Wednesdays, and Thursdays. Submissions must be made in writing and include first and last name, department, and extension number. That information must be printed with ads except that a home phone may be substituted. Ads are free and limited to staff. Ads will be run twice; for additional publication, ads must be resubmitted or The Daily must be notified. Ads will not be repeated more than six times per term. Submissions may be sent through intercampus mail, U.S. mail, or hand-delivered to ADM 210. News reports and announcements will be repeated if space permits but priority will be given to new items.