

# The Daily

Published for the staff of Lane Community College

747-4501, ext. 2591

Tuesday, February 1, 1994

Week 5 of Winter Term

Edited by Joan Aschim

## Today

- College Council, 1:30-3 p.m., Board Room.

## President opens his door to drop-in visitors

President Jerry Moskus will hold open office hours on Thursday, Feb. 3, from 1-5 p.m. If you would like to schedule a particular 15-minute segment, call Tracy Simms at Ext. 2200. Otherwise, drop by sometime Thursday afternoon.

## "LCC Today" features diverse guests

"LCC Today," the television show produced by Media Arts and Technology students, features three special guests this week and next. They are Mark Harris, advisor to the Lane Black Student Union; Patsy Raney, resource coordinator for the Women's Program; and Connie Mesquita, coordinator of the Multicultural Center. Their comments will be aired on today at 4 p.m. on cable channel 12; Thursday, Feb. 3, 4 p.m., cable channel 12; and Thursday, Feb. 10, 7:30 p.m., cable channel 11.

## Faculty contract notice

I stand corrected: In last week's Daily I stated that contracts should have been received by all full-time and part-time faculty. These contracts are available only to all active bargaining unit members. If you are not an active bargaining unit member and you want to be one, contact Don Micken at Ext. 2177 or me, Wes Chamberlain, at Ext. 2271.

## Scholarship for disabled students funded by SELCO

A \$150 scholarship sponsored by SELCO Credit Union for students with disabilities is now available. The scholarship will be awarded annually for each spring term beginning this year. Applications for spring 1994 are due Feb. 15. For applications and eligibility requirements, contact Disabled Student Services, CEN 213-C, Ext. 2150.

## Nagasaki exchange applications due

Applications for the student exchange to Nagasaki Wesleyan Junior College are due Feb. 23. This successful program will send a student to Japan for the ninth time and host a student from Nagasaki Wesleyan. The exchange lasts from September 1994 through July 1995. Lane's student will study Japanese language and culture in a beautiful setting on the southern island of Kyushu. Some prior knowledge of Japanese is desirable but not required. For an application and more information, contact Mason Davis, international student counselor, CEN 221, Ext. 2204.

## Printing deadline reminder

Packets and books needed for spring term should be submitted to Printing/Graphics by Friday, Feb. 18. Materials needed for the first day of spring term should be submitted by Wednesday, March 16. Thanks for your cooperation.

## Transition team learns from expert

The Transition Planning Team reviewed the work of Dr. William Bridges on Jan. 6. The minutes of that meeting have some good tips on coping with change. For example:

- Everyone is a temporary.
- Value needs to be demonstrated regularly.
- Being a "good employee" is out; being "vendor-minded" is in.
- View your work as being in business for yourself.
- A new career will be marked by frequent transitions.

Transition Planning Team meetings welcome guests. The group's next meeting is Thursday, Feb. 3, 2 p.m. APR 215.

*Lane Community College provides a quality learning experience in a caring environment.*



## Diversity tip

*From Steven Hanamura, presenter at Martin Luther King Day in-service:* In "The Functions of the Executive" by C.I. Barnard, it says, "To try and fail is at least to learn; to fail to try is to suffer the inestimable loss of what might have been." To say it another way: To try and fail is to learn; but to fail to respect and value the differences in others is to suffer the inestimable loss of what we might become in striving towards oneness."

## Safety reminder

The college Safety Committee meets monthly to hear your concerns. It evaluates policies, procedures, and training practices; makes recommendations; obtains and reviews safety suggestions and reports of hazards directly from staff; and conducts workplace inspections on a quarterly basis. The members of the committee are: Paul Colvin, Ext. 2216; Bob Creed, Ext. 2547; Don Hein, Exts. 2190 or 2224; Sandy Ing, Ext. 2666; Eilene LePelley, Exts. 2930 or 2251; Debbie Powers, Ext. 2120; Dave Schiappa, Ext. 2405; and John Shirey, Exts. 2248 or 2826.

## Help plan the next all-staff social

Help plan the next all-staff social event, tentatively scheduled for April 22 as a casino/dance night. To make this truly an all-staff event, we need more management, classified, and faculty employees on the planning committee. Make this your event! Next meeting is Monday, Feb. 7, 4-5 p.m., APR 215. For more information, contact Linda Myers, Ext. 2843.

## Study abroad scholarship deadline is a week away

The National Security Education Program received congressional funding in November for study-abroad scholarships. NSEP seeks to educate U.S. citizens to understand foreign languages and culture, strengthen U.S. competitiveness, and enhance international cooperation and security. Scholarships must be used in countries outside of Western Europe, Scandinavia, and Canada. Undergraduates receiving less than 12 months of aggregate support do not incur obligation, but those receiving more than 12 months of aggregate support are obligated to post-award service in government or education. For application information, contact Mason Davis in CEN 221, Ext. 2239. The deadline for on-campus application for 1994-95 is Feb. 7.

## If you can't go to Mexico, bring Mexico to you

Host families are needed for participants in Lane's international cooperative education program in Guadalajara, Mexico. Our Mexican guests, who are bilingual, will arrive in April or May. A variety of hosting opportunities are available and include providing room and board for two to four weeks, emergency housing for one to three days, weekend hospitality, one day special activity, and one evening hospitality. Don't miss this wonderful opportunity to learn about Mexican culture and maybe even practice your Spanish. To take advantage of this exciting opportunity, call Peggy Marston at Ext. 2423.

---

### ADS

**CHALLENGE ME!** I will increase my pledge for \$2 for each person to sponsor me for the Womenspace lap-a-thon. I'll run 5-miles. Please send memo/pledges to Kay Gidley, Athletics, Ext. 2555.

**NEEDED: AVON REPRESENTATIVE.** I'm new to the area and am hoping to buy some Avon products soon. Nancy Hart-Fishwick, Disabled Student Services, Ext. 2079.

**FOR SALE:** '81 CHEVY VAN, long, 305 automatic, runs great. Reduced to \$1,500. Zendra Cates, FS, Ext. 2598, or 747-6754 after 4 p.m.

**AN EVENING OF GOSPEL** and contemporary music followed by delectable desserts. "Not Just Desserts" will be a high energy, high cholesterol, high calorie evening with the St. Alice folk group. Come join us Friday, Feb. 4, 7:30 p.m., St. Alice Church, Springfield. Donations will be graciously accepted. Chris Hainley, Sr., FA, Ext. 2350.

**GET YOUR STAFF AND FRIENDS TOGETHER** to dance to the Valley Boys! Saturday, Feb. 26, 8:30-12:30 p.m. at the Eagles on the Green. This is a fund-raiser for North Eugene High School drug/alcohol-free graduation party. Tickets: \$7 each (dinner available but not included). When is the last time you went to a fun dance? For tickets, call Linda Wong, Study Skills, Ext. 2444.

**QUALITY TAX RETURNS**, affordable rates (itemized state and federal, \$48). Individual, rentals, self-employed, trusts, all states. Call Jeff Taylor at 344-4729. (Science, Ext. 2446).

**GIVE A UNIQUE VALENTINE'S GIFT** to yourself or someone else. Check out the second annual Restaurant Tour of the Valley classes on page 12 in the class schedule. Call Continuing Ed. at Ext. 2252 for registration information. Bon Appetit! - Lorna Funnel.

**WE TOLD SEVERAL CALLERS** these items were sold but buyers let us down, so here we go again: Imagewriter II printer, in box with manual and cables, very little use, \$125. All offers considered. Jim Bacon, 746-7574 anytime, or Anne Bacon, Instructional Computing, Ext. 2065.

**FOR SALE:** two matching love seats 67" long, tan stripe, oak trim, \$175 for pair. Julie Baker, ext. 2199 or 484-9391.

**DEADLINE for The Daily** is 12-noon of the working day prior to publication on Mondays, Tuesdays, Wednesdays, and Thursdays. Submissions must be made in writing. E-Mail and 3-1/2" disks with WordPerfect or Word documents, IBM or Mac formats, encouraged. Include first and last name, department, and extension number. Ads will be run twice; for additional publication, resubmit or notify The Daily. Ads will not be repeated more than six times per term. Other items will be run once and repeated if space allows; priority will be given to new items. Questions? Call Ext. 2591.



# The Daily

Published for the staff of Lane Community College

747-4501, ext. 2591

Wednesday, February 2, 1994

Week 5 of Winter Term

Edited by Joan Aschim

## Today

- Student Services directors, today, 9-11 a.m., Board Room.
- Instructional Cabinet, today, 1:30-3 p.m., Board Room.
- Groundhog Day. Folklore claims that if the groundhog sees its shadow when emerging on this day, six more weeks of winter weather remain.

## Game tonight

The Titans basketball teams play tonight against Southwestern, with the women's game at 6 p.m. and the men's at 8 p.m. Students admitted free. Don't miss the action!

## The early bird gets the legislative update

The Legislative Action Team will meet Thursday, Feb. 3, from 7:30-9 a.m., in the Board Room.

## Student evaluation of faculty topic of meeting

A Faculty Council subcommittee will meet on Wednesday, Feb. 9, at 9 a.m. in PE 205, to revise the campus-wide form for faculty evaluation by students. If you have input, feel free to join the meeting or forward suggestions to Beth Naylor, Family & Health Careers, Ext. 2533.

## College Council meeting notice

On Tuesday, Feb. 15, College Council will meet in the Board Room, not PE 205 as previously scheduled. Donna Albro has indicated that participants in the League for Innovation's program, Expanding Leadership Diversity in Community Colleges, will be attending this meeting.

### February is Black History Month

## African-American businesswoman rose from poverty to prominence

Madam C.J. Walker was one of the most influential personalities of the early 20th century. She also was one of the most important African-American philanthropists and businesswomen of her time.

Walker rose from an impoverished childhood in Delta, Louisiana, to head a cosmetics corporation in Indianapolis, Ind. Her career and contributions to Indianapolis are still honored because of Walker's determination to improve the conditions of African-Americans everywhere.

*Madam C.J. Walker: Entrepreneur*, written by A'Lelia Perry Bundles and published in 1991 by Chelsea House Publishers, chronicles Walker's remarkable rise to prominence in the Indianapolis business community.

Walker was born in Louisiana in 1867. Her parents had been slaves on a cotton plantation. After the Civil War, her parents remained to become sharecroppers. In 1874, yellow fever claimed the lives of Walker's

parents and left her, her older brother and sister orphans.

After learning to make a living for herself as a washerwoman, Walker began to improve her life. By 1888, Walker had become a widowed mother of a daughter. She needed to make some changes.

In 1905, Walker moved to Denver and in 1906 married C.J. Walker. That year they began a mail-order business selling Madam C.J. Walker's Wonderful Hair Grower. Her business had begun.

In 1910, Walker took her business to Indianapolis. By 1915, she had built a block-long factory in downtown Indianapolis. Her contributions to orphanages, schools, YMCA's and other charities had become famous.

Though Walker would die at the age of 51 in 1919, her company would survive decades after its famous pioneer.

## Humanities summer seminars offered

The National Endowment for the Humanities Summer Seminars for College Teachers program is taking applications for summer 1994. Application deadline is March 1. Contact Julie Baker at Ext. 2199 for further information.

## New insurance directories sent

Employees currently covered by HMO Oregon should have received a current HMO Oregon Participating Provider Directory. Classified and management employees covered by Blue Cross Blue Shield of Oregon should have received a Preferred Provider Directory. Also, a revised copy of the Blue Cross medical and vision benefits booklet has been sent to classified employees covered by Blue Cross. If you did not get a copy or have questions, call Carol Goldsberry at Ext. 2590.



## Limited service

Personnel Services payroll and benefits staff will attend a conference of the Oregon community colleges business office personnel on Friday, Feb. 4. Please hold payroll and benefits questions, including insurance and leave questions, until 7 a.m. on Monday, Feb. 7.

## February conferences

For information on the following February conferences, contact Julie Baker, Ext. 2199.

- "13th Annual Conference Oregon Women in Higher Education: Scholars, Leaders, Learners," Portland, Feb. 4, no fee stated.
- "Grammar Usage and Business Writing Skills," Eugene, Feb. 8, \$99.
- "Project Management," Eugene, Feb. 9, \$195.
- "The Basics of Facilities Compliance Under the ADA," Eugene, Feb. 11, \$145.
- "Creating Connections Among Students, Faculty and Disciplines: A Conference on Learning Communities," Bellevue, WA, Feb. 11-12, \$120.
- "Re-educating America: Technology and Higher Education," San Diego, Feb. 16-18, \$300.
- "Grappling with Grammar," Eugene, Feb. 21, \$99.

## Faculty contract notice

I stand corrected: In last week's Daily I stated that contracts should have been received by all full-time and part-time faculty. These contracts are available only to all active bargaining unit members. If you are not an active bargaining unit member and you want to be one, contact Don Micken at Ext. 2177 or me, Wes Chamberlain, at Ext. 2271.

## Help plan the next all-staff social

Help plan the next all-staff social event, tentatively scheduled for April 22 as a casino/dance night. To make this truly an all-staff event, we need more management, classified, and faculty employees on the planning committee. Make this your event! Next meeting is Monday, Feb. 7, 4-5 p.m., APR 215. For more information, contact Linda Myers, Ext. 2843.

---

### ADS

INTERESTED IN ANCIENT MAYANS? Fifth lecture-presentation in Institute for Science, Engineering and Public Policy will be by Linda Schele, well-known expert on Mayan writing and art. She will speak on Mayan religion and cosmology at the Hult Center this Thursday, Feb. 3, at 8 p.m. Half-price tickets (\$10.50) are available at the door to Lane students and staff; just identify yourself as such when you purchase tickets. For more information, contact Ingrid Gram, Social Science, Exts. 2846/2427.

KING SIZE BED for sale. Good condition. Has frame, real cozy, \$45. Call Denine McMurren after 5 p.m. at 746-6042, or Ext. 2507, ABSE, 8 a.m.-5 p.m.

FOR SALE: SILVER '84 HONDA CIVIC DX, hatchback, 81,000 miles, 5-speed, 4 extra studded tires on wheels, stereo CD player, new clutch, muffler and battery. \$3,000. Shirley Baldwin, Computer Services, Ext. 2245, or evenings 343-1101.

ON-SITE MASSAGE, 15-minute session of invigorating upper body massage, received in the seated position in a specially designed chair, no oils, without disturbing or removing everyday work attire. It concentrates attention to the neck, shoulders, back, lower back, arms and hands. The advantage of this massage over conventional is that it leaves you feeling awake and alert to carry on with your daily activities, yet totally relaxed and rejuvenated. The results are immediate and long-lasting. Best of all, it feels great! 2-3 people: \$14/session. 4-6 people: \$12/session. More than 6 people: \$10/session. Uli LaRochelle, LMT, will be on campus on Thursdays from 8:30-11 a.m. in M&A 249. To set up a schedule or for more information, call Uli at 683-6083. (Charleen Maclean, Transitions to Success, Ext. 2840.)

CHALLENGE ME! I will increase my pledge for \$2 for each person to sponsor me for the Womenspace lap-a-thon. I'll run 5-miles. Please send memo/pledges to Kay Gidley, Athletics, Ext. 2555.

NEEDED: AVON REPRESENTATIVE. I'm new to the area and am hoping to buy some Avon products soon. Nancy Hart-Fishwick, Disabled Student Services, Ext. 2079.

AN EVENING OF GOSPEL and contemporary music followed by delectable desserts. "Not Just Desserts" will be a high energy, high cholesterol, high calorie evening with the St. Alice folk group. Come join us Friday, Feb. 4, 7:30 p.m., St. Alice Church, Springfield. Donations will be graciously accepted. Chris Hainley, Sr., FA, Ext. 2350.

FOR SALE: '81 CHEVY VAN, long, 305 automatic, runs great. Reduced to \$1,500. Zendra Cates, FS, Ext. 2598, or 747-6754 after 4 p.m.

**DEADLINE for The Daily** is 12-noon of the working day prior to publication on Mondays, Tuesdays, Wednesdays, and Thursdays. Submissions must be made in writing. E-Mail and 3-1/2" disks with WordPerfect or Word documents, IBM or Mac formats, encouraged. Include first and last name, department, and extension number. Ads will be run twice; for additional publication, resubmit or notify The Daily. Ads will not be repeated more than six times per term. Other items will be run once and repeated if space allows; priority will be given to new items. Questions? Call Ext. 2591.



# The Daily

Published for the staff of Lane Community College

747-4501, ext. 2591

Thursday, February 3, 1994

Week 5 of Winter Term

Edited by Joan Aschim

## Today

- President's open office, 1-5 p.m. Drop in, or call Ext. 2200 to reserve a specific 15-min. segment.
- Transition Planning Team, 2-4 p.m., APR 215. Video: Understanding Learning Organizations."
- Dennis Lueck slide-lecture on Switzerland, Thursday, Feb. 3, 7-9 p.m., FOR 307.

## Upcoming College Council meetings

- Friday, Feb. 4, 9-11 a.m., Renaissance Room, Western Interstate Commission for Higher Education training session for the Institute on Ethnic Diversity.
- Tuesday, Feb. 8, 3-4 p.m., BUS 205, budget reductions.
- Tuesday, Feb. 15, 3-4 p.m., Board Room (not PE 205), including participants in the League for Innovation's "Expanding Leadership Diversity in Community Colleges" program.

*shared decision-making news*

## College Council report

### Council to take on part-time/full-time faculty issue

There is a "groundswelling of concern" among faculty over the part-time/full-time issue, Maxine Frauman told College Council at its Feb. 1 meeting. Frauman, a faculty rep to council, is interviewing instructors in all departments as part of her work on the Future Faculty Task Force. She has found concern over the impact of the increase in part-time faculty on full-time faculty and support staff, the ratio of full-time to part-time faculty, and how the decision was made to hire more part-time staff, and other concerns. Donald Micken, also a faculty rep on council, said there would be a meeting on the issue for faculty and interested others on Feb. 10 at 3 p.m. in FOR 308 sponsored by the faculty union. Council decided to put the issue on its own agenda at the next meeting.

### Restructuring update

President Jerry Moskus said written feedback to the restructuring proposal is under review. He said most commented on were the student services portion, where to place Printing/Graphics, and names such as "cluster". Diane Dann, guest at the meeting, cautioned the president to consider what names the public will hear and see, and to look at names as a whole package after the restructuring is settled. Frauman asked that the Future Faculty Task Force be included in the proposal. A revised proposal will be issued Feb. 9 for a second round of feedback.

### Budget reductions to be discussed in special meeting

Moskus said budget reduction recommendations will be presented in a special council meeting on Tuesday, Feb. 8, 3-4 p.m., in BUS 205. Like last year, all programs are quality and worthwhile, making decisions to cut extremely difficult, he said. He explained that the Board of Education will be asked to work with a package of options where certain cuts could be avoided by increasing tuition instead. A tuition increase of \$4 an hour would prevent most cuts in 1994-95 and still leave Lane with comparatively low tuition statewide. The projected budget shortfall for next year is \$1.3 million.

### In other business

Council appointed Frauman, Marie Matsen, Kate Barry and Alen Bahret to evaluate council's training needs. Micken reported that Tom Birkenhead had resigned from Faculty Council and College Council due to a heavy workload. Angela Miller said Classified Council was reviewing customer service suggestions and deciding how to respond to them. Barb Delansky said the students were close to establishing a book exchange in cooperation with the Bookstore.

## Meeting notice

If you submitted a technology related budget project request that could impact departments and branches, come to a meeting on Tuesday, Feb. 8, 10 a.m., Board Room, to see if any of the projects can be integrated and/or coordinated, especially those related to the new college network. The computer users group has volunteered to help in this endeavor. We will be using their regular meeting time for this discussion. Questions? Call Marie Matsen, Ext. 2313.

## Halfway to summer

Friday, Feb. 4, marks the halfway point of winter with 44 days remaining.

*Lane Community College provides a quality learning experience in a caring environment.*



## Brown bag lunch talk to be held

The Women's Program will sponsor a brown bag lunch talk on Monday, Feb. 7, 12-1:30 p.m., in the Board Room. The topic: "Challenging Physician Control: The Women's Self-Help Slide Show," with staff from the Feminist Women's Health Center.

## Newsletter available

Contact Shan Titus in High School Relations (Admissions) at Ext. 2688 if you'd like copies of the winter issue of The Latest From Lane, a newsletter to district high schools.

## Marketing grants awarded

The staff and programs listed below have been awarded marketing grants. The next marketing grant deadline is April 28. Funds awarded at that time will be available July 1. Guidelines and applications are available from Angela Miller, Ext. 2268. The newest recipients are:

- Peg Allison, Business Development Center, \$700, to print additional copies of BDC's spring BusinessReport and to insert them in Business News.
- Bill Porter, Lane Community College at Florence, \$350, to produce a brochure to promote Elderhostel and other Florence programs to the senior/retired community.
- Carol Lynn Morse, Counseling, \$100, to develop materials to promote the Women's Express.

## Sharing their expertise

Patti Lake and Lynne Swift from Training & Development teamed up for a presentation on stress management at Mt. Hood Community College's Women's History Celebration on Jan. 26.

## More February conferences

For information on the following February conferences, contact Julie Baker, Ext. 2199.

- "American Council on Education: Shaping the Forces of Change," Washington, DC, Feb. 20-23, \$400.
- "The Impact of Families, Friends, and Social Systems on Health," Colorado Springs, CO, Feb. 22-26, \$495.
- "How to Supervise People," Eugene, Feb. 24, \$99.
- "Hands-On PC Troubleshooting, Maintenance, and Upgrading," Portland, Feb. 24-25, \$690.
- "How to Handle Conflict & Confidently Resolve Confrontations," Eugene, Feb. 25, \$98.
- "Renewing Faculty Commitment to Teaching Excellence," Orlando, Feb. 26-28, \$200.
- "41st annual Western Regional Meeting of the College Board," Honolulu, Feb. 27 - March 1, \$n/a.

## Limited service

Personnel Services payroll and benefits staff will not be available Friday, Feb. 4. Please hold payroll and benefits questions, including insurance and leave questions, until 7 a.m. on Monday, Feb. 7.

---

### ADS

TRAVELOGUE TO RUSSIA. Escape the winter blahs and join me on a trip to Siberia in the summer (Irkutsk, Russia, July 1993). See slides of Russian life that will take you inside a maternity hospital, into the beautiful countryside, and into Russian homes. Bring your lunch and enjoy. Tuesday, Feb. 22, 12-1 p.m., HEA 263 (Ngs. lab). Maureen Rice, F&HC, Ext. 2633.

PRE-ORDER YOUR VALENTINE balloon and rose bouquets from the Bookstore for best selection. To pre-order, fill out an order form at the cash register. Free office delivery on Feb. 14 will be provided. Check with us for the best prices in town! Also, the Bookstore offers many other Valentine gifts including Euphoria Chocolate valentines. Sign up to win a \$10 gift certificate from Euphoria.

INTERESTED IN ANCIENT MAYANS? Fifth lecture-presentation in Institute for Science, Engineering and Public Policy will be by Linda Schele, well-known expert on Mayan writing and art. She will speak on Mayan religion and cosmology at the Hult Center this Thursday, Feb. 3, at 8 p.m. Half-price tickets (\$10.50) are available at the door to Lane students and staff; just identify yourself as such when you purchase tickets. For more information, contact Ingrid Gram, Social Science, Exts. 2846/2427.

KING SIZE BED for sale. Good condition. Has frame, real cozy, \$45. Call Denine McMurren after 5 p.m. at 746-6042, or Ext. 2507, ABSE, 8 a.m.-5 p.m.

FOR SALE: SILVER '84 HONDA CIVIC DX, hatchback, 81,000 miles, 5-speed, 4 extra studded tires on wheels, stereo CD player, new clutch, muffler and battery. \$3,000. Shirley Baldwin, Computer Services, Ext. 2245, or evenings 343-1101.

**DEADLINE for The Daily** is 12-noon of the working day prior to publication on Mondays, Tuesdays, Wednesdays, and Thursdays. Submissions must be made in writing. E-Mail and 3-1/2" disks with WordPerfect or Word documents, IBM or Mac formats, encouraged. Include first and last name, department, and extension number. Ads will be run twice; for additional publication, resubmit or notify The Daily. Ads will not be repeated more than six times per term. Other items will be run once and repeated if space allows; priority will be given to new items. Questions? Call Ext. 2591.



# The Daily

Published for the staff of Lane Community College

747-4501, ext. 2591

Monday, February 7, 1994

Week 6 of Winter Term

Edited by Angela Miller

## This week

- "Challenging Physician Control: The Women's Self-Help Slide Show", today, 12-1:30 p.m., Board Room. For information, call Ext. 2353.
- College Council, Tuesday, Feb. 8, 3-4 p.m., FOR 309.
- Board of Education, Wednesday, Feb. 9, 7:30 p.m., Board Room.
- CED, Wednesday, Feb. 9, 1:30-3:30 p.m., Board Room.
- Classified Council, Wednesday, Feb. 9, 3-5 p.m., PE 205.
- Faculty Council, Thursday, Feb. 10, 2:30-3 p.m., Board Room. A forum addressing full-time and part-time faculty issues will follow at 3 p.m. in FOR 308.
- Managers Forum, Friday, Feb. 11, 8:30-10 a.m., FOR 308

## History team helps The Daily launch new "Initiatives" column

With this issue, The Daily launches a new service to spotlight the work of informal or self-appointed work teams on campus. We're calling it "Initiatives." The purpose is to make sure that anyone who is interested in a particular subject will learn about staff who already are working on that subject with the goal of attracting ideas and avoiding duplication. The College History Team described below is an example of such an initiative.

If you are working on college projects that you think other staff might like to know about, please send a brief description to "Initiatives," % The Daily.

**History Team:** Joan Aschim and Diane Dann, Institutional Advancement, and Michael Ridderbusch, Archives/Records Management, have formed an informal team to track and capture important events in the college's history. This team will provide annual updates to the college's Fact Book and identify key events for other uses. For more information about the work of this team, contact any one of the members.

## Berg to speak on Thoreau

Ted Berg, of Lane's English Department, will speak in Jerome Garger's Peace and Conflict Studies class, Tuesday, Feb. 8, from 7:15 to 8:15 p.m. in APR 216. His topic will be "Henry David Thoreau: A Personal Perspective." Guests are welcome.

## All-staff event in planning stage

Mark your calendar for the all-staff Casino-Dance night, Friday, April 22 at Lane. Don't miss out on a fun filled evening. Watch The Daily for more details. If you would like to be involved in planning this event, contact Linda Myers, Ext. 2883.

## International students plan outings

The International Student Community Program is sponsoring the following trips during February: Saturday, Feb. 12, Salem; Saturday, Feb. 26, Wildlife Safari. If staff members would like to join the fun, contact Pat Williams, Ext. 2165.

## Titans defeat SWOCC

Both the men's and women's basketball teams defeated Southwestern Oregon Community College last Wednesday. The women scored 101 points over SWOCC's 57 points and the men prevailed in a close game of 62 to 57. The next game is scheduled for Saturday, Feb. 12. There are only two games remaining in the season. Don't miss the action. - D'Lane Joens, Ext. 2215

## Printing deadline reminder

Packets and books needed for spring term should be submitted to Printing/Graphics by Friday, Feb. 18. Materials needed for the first day of spring term should be submitted by March 16. Thanks for your cooperation.

## Brown bag lunch talk to be held today

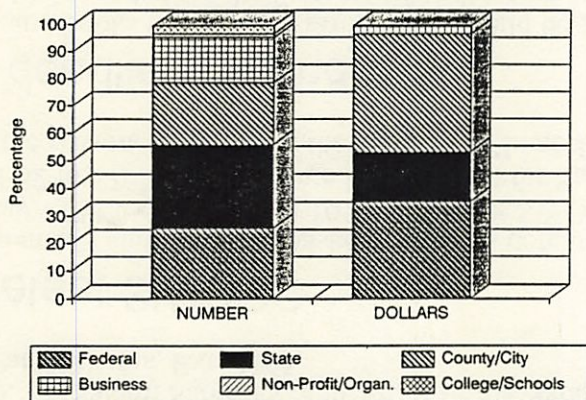
The Women's Program will sponsor a brown bag lunch talk today, 12-1:30 p.m., in the Board Room. The topic: "Challenging Physician Control: The Women's Self-Help Slide Show," with staff from the Feminist Women's Health Center.

*Lane Community College provides a quality learning experience in a caring environment.*



**KEY BENCHMARKS**  
**LANE COMMUNITY COLLEGE**  
 Grants and Contracts  
 December 1993

**Percentage of Grants and Contracts**



☑ In December 1993, the college had over \$7.5 million in grants and contracts with 66 agencies. This represents an 11.6% decrease in grant revenue, when compared to December 1992.

☑ More than 7,900 people are served by these agreements in 1993-94.

*From the Office of Research, Planning & Evaluation.*

**LAST CHANCE** for Valentine sweets! Campfire Candy sales end Feb. 11! Call Sue Ferguson, Child Care Co-op, Ext. 2025.

**FOR SALE:** Approximately 1 cord of mixed wood, split to stove size, seasoned for 3 years. \$75. Jana Nelson, Math, ext. 2393.

**ON-SITE MASSAGE**, 15-minute session of invigorating upper body massage, received in the seated position in a specially designed chair, no oils, without disturbing or removing everyday work attire. It concentrates attention to the neck, shoulders, back, lower back, arms and hands. The advantage of this massage over conventional is that it leaves you feeling awake and alert to carry on with your daily activities, yet totally relaxed and rejuvenated. The results are immediate and long-lasting. Best of all, it feels great! \$10 a session. Uli LaRochelle, LMT, will be on campus on Thursdays from 8:30 a.m.-1:30 p.m. If 3 or more people in your department are interested in receiving a massage, Uli will come directly to your department to do the massages. To set up a time and schedule call Uli by Wednesday, 7 p.m. at 683-6083. This offer is available till the end of winter term. Charleen Maclean, Transitions, Ext. 2840.

**QUALITY TAX RETURNS**, affordable rates (itemized state and federal, \$48). Individual, rentals, self-employed, trusts, all states. Call Jeff Taylor at 344-4729. Please don't call Ext. 2446.

**FREE:** Nikki needs a loving and attentive owner. She is a 5 month old ferret...sable in color. Sweet and lively! Linda Mooney, AHS, Ext. 2057 or 933-2511.

**WANT TO BUY:** Upright freezer in good running condition. Linda Mooney, AHS, Ext. 2057 or 933-2511.

**TRAVELOGUE TO RUSSIA.** Escape the winter blahs and join me on a trip to Siberia in the summer (Irkutsk, Russia, July 1993). See slides of Russian life that will take you inside a maternity hospital, into the beautiful countryside, and into Russian homes. Bring your lunch and enjoy. Tuesday, Feb. 22, 12-1 p.m., HEA 263 (Ngs. lab). Maureen Rice, F&HC, Ext. 2633.

**PRE-ORDER YOUR VALENTINE** balloon and rose bouquets from the Bookstore for best selection. To pre-order, fill out an order form at the cash register. Free office delivery on Feb. 14 will be provided. Check with us for the best prices in town! Also, the Bookstore offers many other Valentine gifts including Euphoria Chocolate valentines. Sign up to win a \$10 gift certificate from Euphoria.

**KING SIZE BED** for sale. Good condition. Has frame, real cozy, \$45. Call Denine McMurren after 5 p.m. at 746-6042, or Ext. 2507, ABSE, 8 a.m.-5 p.m.

**FOR SALE:** SILVER '84 HONDA CIVIC DX, hatchback, 81,000 miles, 5-speed, 4 extra studded tires on wheels, stereo CD player, new clutch, muffler and battery. \$3,000. Shirley Baldwin, Computer Services, Ext. 2245, or evenings 343-1101.

**DEADLINE for The Daily** is 12-noon of the working day prior to publication on Mondays, Tuesdays, Wednesdays, and Thursdays. Submissions must be made in writing. E-Mail and 3-1/2" disks with WordPerfect or Word documents, IBM or Mac formats, encouraged. Include first and last name, department, and extension number. Ads will be run twice; for additional publication, resubmit or notify The Daily. Ads will not be repeated more than six times per term. Other items will be run once and repeated if space allows; priority will be given to new items. Questions? Call Ext. 2591.

## Kudos

Congratulations to Darrell Allyn for hosting a top notch meeting for the Willamette Valley Section of the American Society of Heating, Refrigeration, and Air-conditioning Engineers. Darrell was the key-note speaker at the Jan. 27 meeting and also provided ASHRAE members with a tour of Lane's new state-of-the-art Central heating plant.

## ADS

**UNIQUE VALENTINE GIFTS** available for sale Thursday and Friday, Feb. 10 and 11 in the cafeteria. Three artists will have "heart" theme ceramic earrings, pins, bowls, and boxes available 8 a.m.-2 p.m. Questions, call Cheryl Kempner, Study Skills, Ext. 2844.

**SAIL AWAY, SAIL AWAY, SAIL AWAY!** The ASLCC Child Care Co-op is searching for a used rowboat for the children's playground. Do you have one? Please call Sue Ferguson, Child Care Co-op, Ext. 2025.



# The Daily

Published for the staff of Lane Community College

747-4501, ext. 2591

Tuesday, February 8, 1994

Week 6 of Winter Term

Edited by Joan Aschim

## Today

- College Council, 3-4 p.m., FOR 309. Topic: Budget reductions.
- Ted Berg speaks from 7:15-8:15 p.m. in APR 216 on Henry David Thoreau.
- Technology related budget project requests coordination meeting, 10 a.m., Board Room.

## College Council meets today

College Council will hold a special meeting today from 3-4 p.m. in FOR 309 to discuss budget reductions.

## Board agenda

The Board of Education will meet on Wednesday, Feb. 9, at 6 p.m. in the Board Room. Highlights on the agenda: approval of degree programs in drafting, approval of 1994-95 academic calendar, discussion of restructuring, outreach, budget reductions, academic standards, and the president's contract. The next regular meeting will be March 9.

## Degree committee to meet

The degree requirement committee will meet Thursday, Feb. 17, at 3:30 p.m. in BUS 205, to hear a report from the diversity committee on recommended courses to meet the ethnic/gender degree requirement for the associate of arts Oregon transfer degree. Visitors are welcome.

## Computer networks topic of videoconference

A live videoconference, "Solving Local and Wide Area Network Challenges," will be held on Thursday, Feb. 10, from 10 a.m.-12 p.m., in FOR 309. All staff are welcome. It's free. For more information, contact Cynde Leathers at Ext. 2260.

## Faculty comprehensive evaluations due

Reminder: Faculty comprehensive evaluations for 1993-94 for all probationary faculty employees are due in Personnel Services by 5 p.m. on Monday, March 1. If you have misplaced your list of probationary faculty employees or if you cannot meet the March 1 deadline, please notify Germaine Mock at Ext. 2283. Otherwise, a notice of intent not to rehire could be sent in error to an employee.

## Tune in to "LCC Today"

"LCC Today," the television show produced by Media Arts and Technologies students, airs today and Thursday on channel 12 at 4 p.m., and on channel 11 on Thursday, Feb. 17 at 6:30 p.m. Guests: Michele Melanson, new campus organizer for OSPIRG; Nadine Wikes, Student Health Services registered nurse; and Dave Oatman, director of Business and Industry Services.

## Multicultural Center shows films for Black History Month

February is Black History Month. The Multicultural Center is celebrating by showing a series of films at 11 a.m. in CEN 409 on the dates following. Guests are welcome.

- Feb. 8 "Quilonbo"
- Feb. 8, 10, 17 "Eyes on the Prize"
- Feb. 9, 24 "History of Blacks in Oregon"
- Feb. 11 "Malcolm X"
- Feb. 14, 15 "Lady Sings the Blues"
- Feb. 16, 18 "Cry Freedom"
- Feb. 16, 18 "Daughters of the Dust"
- Feb. 22, 23 "Celebrating Bird"
- Feb. 25, 28 "Round Midnight"

*Lane Community College provides a quality learning experience in a caring environment.*



## Classes doing well at community sites

Lane is conducting seven evening classes at Emerald Job Center in Eugene this term with a headcount of 119 and an FTE of 3.36. All are Continuing Education classes. At Willamette High, 208 students are taking Lane classes. Two of the 14 classes at Wil Hi are college transfer, and the others are Continuing Education classes. Both facilities will be used spring term as well, and Thurston High in Springfield may be added to the list.

## Workshop will explore non-traditional careers for women

"Access," a one-day workshop for women interested in exploring non-traditional careers, will be held on Saturday, Feb. 19, from 9 a.m.-4 p.m., in PE 205. The workshop is available for one credit and the registration number is 735. For more information, call Ann Clark at Ext. 2382 or the Women's Center at Ext. 2353.

## If you use a computer

If you use a computer, send your Daily submissions via E-Mail or on 3-1/2" disks, either Macintosh (preferred) or IBM (acceptable) formats and programs. Address E-Mail submissions to Joan Aschim. Disks will be returned. Send disks to The Daily through intercampus mail or deliver to the box outside ADM 210.

---

### ADS

LET'S LET JAY MARSTON know that he is in our thoughts and is not forgotten. If you can contribute any of the following, send to Peggy Marston in Social Science, or take to the Social Science office to put into a special box: Notes, cards, valentines, poems, articles, cartoons, audio or video tapes of you and your departments, and yes, chocolate! And stop in at Study Skills to sign the banner. Deadline: Friday, Feb. 11.

FOR SALE: SKIS, Vokel 200 cm, \$40; K-2 200 cm, \$40; Rossignol 185 cm, \$25. Tour bike, Trek 410 15-speed, \$75. Tame cockateil and parakeet in double cage, \$50. Canning jars, \$2.50/dozen. John Winquist, Counseling, Ext. 2870, or 344-1125.

PRE-ORDER YOUR VALENTINE balloon and rose bouquets from the Bookstore. Balloon bouquet, \$3.99 (1 mylar, 5 latex); single rose bouquet, \$4.95; double rose bouquet, \$7.95. Sign up to win a \$10 gift certificate from Euphoria Chocolates.

NINTH ANNUAL ASIAN CELEBRATION will be Feb. 20 at Lane County Fairgrounds from 10 a.m.-6 p.m. Volunteers are needed at the doors. If interested, contact Hai or Valerie Nguyen at 688-8008. (Kerin Hoag, CCRC.)

DINING table and four chairs, \$125. Bert Ewing, Computer Services, Ext. 2829.

UNIQUE VALENTINE GIFTS available for sale Thursday and Friday, Feb. 10 and 11 in the cafeteria. Three artists will have "heart" theme ceramic earrings, pins, bowls, and boxes available 8 a.m.-2 p.m. Questions, call Cheryl Kempner, Study Skills, Ext. 2844.

SAIL AWAY, SAIL AWAY, SAIL AWAY! The ASLCC Child Care Co-op is searching for a used rowboat for the children's playground. Do you have one? Please call Sue Ferguson, Child Care Co-op, Ext. 2025.

LAST CHANCE for Valentine sweets! Campfire candy sales end Feb. 11! Sue Ferguson, ASLCC Child Care Co-op, Ext. 2025

ON-SITE MASSAGE, 15-minute session of invigorating upper body massage, received in the seated position in a specially designed chair, no oils, without disturbing or removing everyday work attire. It concentrates attention to the neck, shoulders, back, lower back, arms and hands. The advantage of this massage over conventional is that it leaves you feeling awake and alert to carry on with your daily activities, yet totally relaxed and rejuvenated. The results are immediate and long-lasting. Best of all, it feels great! \$10 a session. Uli LaRochelle, LMT, will be on campus on Thursdays from 8:30 a.m.-1:30 p.m. If 3 or more people in your department are interested in receiving a massage, Uli will come directly to your department to do the massages. To set up a time and schedule call Uli by Wednesday, 7 p.m. at 683-6083. This offer is available till the end of winter term. Charleen Maclean, Transitions, Ext. 2840.

QUALITY TAX RETURNS, affordable rates (itemized state and federal, \$48). Individual, rentals, self-employed, trusts, all states. Call Jeff Taylor at 344-4729. Please don't call Ext. 2446.

FREE: Nikki needs a loving and attentive, 1 owner. She is a 5 month old ferret...sable in color. Sweet and lively! Linda Mooney, AHS, Ext. 2057 or 933-2511.

WANT TO BUY: Upright freezer in good running condition. Linda Mooney, AHS, Ext. 2057 or 933-2511.

**DEADLINE for The Daily** is 12-noon of the working day prior to publication on Mondays, Tuesdays, Wednesdays, and Thursdays. Submissions must be made in writing. E-Mail and 3-1/2" disks with WordPerfect or Word documents, IBM or Mac formats, encouraged. Include first and last name, department, and extension number. Ads will be run twice; for additional publication, resubmit or notify The Daily. Ads will not be repeated more than six times per term. Other items will be run once and repeated if space allows; priority will be given to new items. Questions? Call Ext. 2591.

**February is Black History Month**



# The Daily

Published for the staff of Lane Community College

747-4501, ext. 2591

Wednesday, February 9, 1994

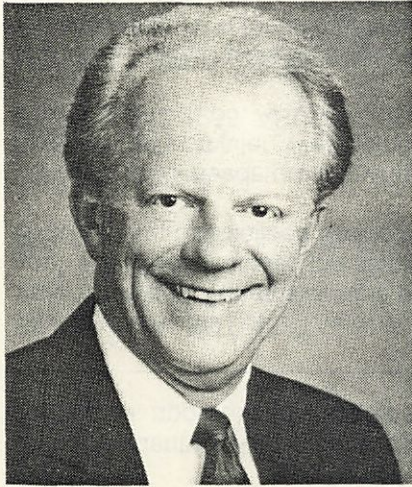
Week 6 of Winter Term

Edited by Joan Aschim

## Today

- CED, 1:30-3:30 p.m., Board Room.
- Classified Council, 3-5 p.m., PE 205. Agenda highlight: Review of submissions to suggestion box.
- Board of Education, 6 p.m., Board Room.

## Larry Warford recognized for workforce leadership



Vice President for Community and Economic Development Larry Warford received an award for outstanding leadership in the field of workforce training from the League for Innovation in the Community College at its national "Workforce 2000" conference in New Orleans last week. This is the first such award the League has ever presented.

"If it had not been for Larry Warford's early research and continued leadership, the League would not be in the position it is today to help community colleges meet the increasing demand for workforce training," said Terry O'Banion, League executive director.

Warford conducted a national study of customized training in community colleges in 1989. It and subsequent state studies have shown customized workforce training to be a new niche for community colleges. Warford's work led to the formation of the Business and Industry Services Network, a forum for information sharing among League colleges.

In accepting the award, Warford said, "It is an honor to receive this distinction from the League. We need to recognize the efforts of all the people in community colleges across North America for their work in providing quality programs to business, industry, government and labor in their service areas."

## Student evaluations of faculty topic of meeting

Faculty Council will meet tomorrow, Thursday, Feb. 10, for a half-hour from 2:30-3 p.m. in the Board Room to hear a report on student evaluations of faculty. The meeting will adjourn in time for the 3 p.m. meeting in FOR 308 on the part-time: full-time faculty ratio (see next item).

## Forum to be held on part-time: full-time faculty ratio

The Lane Community College Education Association invites interested faculty and staff to a meeting on Thursday, Feb. 10, at 3 p.m. in FOR 308 to discuss the part-time: full-time faculty ratio and its impact on quality at Lane. A notice issued by the union says the meeting "is an opportunity for faculty to discuss, document and define key issues of full-time part-time faculty employment. From this discussion, the LCCEA will develop a position aimed at preserving and increasing the quality of education and worklife of all faculty and staff."

## Faculty Council report

Instructor Maxine Frauman reported on the work of the Future Faculty Task Force at the Jan. 17 Faculty Council meeting. The task force consisted of Frauman and science instructor Jay Marston who has resigned due to illness. Frauman said she and Marston visited most departments to question faculty members to determine what they thought were the essential issues the college should consider in determining the future faculty. She says the faculty's key concern was the increasing ratio of part-time to full-time faculty. The council will hold an open discussion of the issue on Thursday, Feb. 10, at 3 p.m. in Forum 308. The regular Faculty Council meeting will be held the same day at 2:30 p.m. (see above items). - by Arlene Hougland for The Daily

## TTT workshop will focus on grades

"TTT: Teachers Talking About Teaching" will meet Tuesday, Feb. 15, 3 p.m., CEN 420, to discuss grading practices, factors used in student grades, sources of grading data, and setting cutoffs for grades. The workshop will help participants (a) explore the advantages and disadvantages of various grading practices and (b) begin the process of reviewing options and devising sound grading practices. The workshop will use materials on classroom assessment from the Northwest Regional Education Laboratory. Jill McKenney will facilitate. Sponsor is the Faculty Professional Development Committee. Goodies from The Renaissance Room and a door prize will be included. - Sharon Thomas

*Lane Community College provides a quality learning experience in a caring environment.*



## Collaborative learning discussion group to meet monthly

The Inquiry Group on Cooperation and Collaboration in the classroom, sponsored by the Faculty Professional Development Team, has decided to meet monthly for discussion of this topic. The first meeting will be held on Tuesday, March 1, 3-4 p.m. in CEN 420. All interested faculty are invited to join. If you would like a copy of the article "Collaborative Learning: Shared Inquiry as a Process of Reform" that the group will read prior to our meeting, please call Maxine Frauman, Ext. 2253.

## Clothing stash use grows with college population

The No Cash Clothing Stash coordinated by Campus Ministry reports that in 1992, 4,910 articles of clothing were given to 2,028 students. In 1993, the Clothing Stash issued 7,639 articles of clothing to 2,405 students. This shows an increase of 377 students and 2,729 articles of clothing. In 1983, the year the program began, there were 5,235 articles of clothing distributed to 1,806 students. As the population on campus has grown, the use of the NCCS appears to have grown in proportion.

## U.N. proclaims 1994 international year of the family

The United Nations General Assembly has proclaimed 1994 as the International Year of the Family. The theme: "Family Resources and Responsibilities in a Changing World."

## Computer networks topic of videoconference

A live videoconference, "Solving Local and Wide Area Network Challenges," will be held on Thursday, Feb. 10, from 10 a.m.-12 p.m., in FOR 309. All staff are welcome. For more information, contact Computer Information Technology at Ext. 2826.

## Charlotte Kudlemyer to retire

Charlotte Kudlemyer is retiring from Lane at the end of February after a lengthy period of ill health. If you would like to send her a card in care of the Library, the Library staff will present it to her at its private get-together with her. She does not wish an all-staff function at this time. - Pat John

## Scholarship for disabled students funded by SELCO

A \$150 scholarship sponsored by SELCO Credit Union for students with disabilities is now available. The scholarship will be awarded annually for each spring term beginning this year. Applications for spring 1994 are due Feb. 15. For applications and eligibility requirements, contact Disabled Student Services, CEN 213-C, Ext. 2150.

---

### JOBS

Vice President for Administrative Services, management. Open until filled; for initial consideration by the search committee, applications should be postmarked by March 15.

---

### ADS

SINGING VALENTINE! The Shyness acappella group will sing to your sweetheart at office, home or restaurant on Valentines day. Times available between 11 a.m. and 7 p.m. depending on location. A unique way to say "I love you". A \$25 fee includes the singing of two love songs in 6 part harmony, and a rose. For more information call Rick Venturi, Specialized Employment Services, or Roy at 461-1287.

LOVING DOG needs great loving home with fenced yard. Black Lab/Miniature German Shepherd mix looks like black lab only smaller. Well trained, good with children and other animals; like dogs, cats, goats, horses. Call Kim Bower at 342-1255. ASLCC Child Care Co-op, Ext. 2025.

MOVING? NEED BOXES? We've got them. You can have them. Boxes from U Haul, Bekins, etc. We're not moving again for a long time! Needed: One set of interior wood shutters with approximately one-inch slats. Anybody know a source? Contact Jill McKenney, Math, Ext. 2401 or 2392.

JUST DETAILED BY A PRO! Pay off my 1993 GEO or arrange with SELCO to assume loan. I'm going yuppie (Volvo inspired). Lorna Funnell, Cont. Ed, Ext. 2906.

LET'S LET JAY MARSTON know that he is in our thoughts and is not forgotten. If you can contribute any of the following, send to Peggy Marston in Social Science, or take to the Social Science office to put into a special box: Notes, cards, valentines, poems, articles, cartoons, audio or video tapes of you and your departments, and yes, chocolate! And stop in at Study Skills to sign the banner. Deadline: Friday, Feb. 11.

FOR SALE: SKIS, Vokel 200 cm, \$40; K-2 200 cm, \$40; Rossignol 185 cm, \$25. Tour bike, Trek 410 15-speed, \$75. Tame cockateil and parakeet in double cage, \$50. Canning jars, \$2.50/dozen. John Winquist, Counseling, Ext. 2870, or 344-1125.

DINING table and four chairs, \$125. Bert Ewing, Computer Services, Ext. 2829.

**DEADLINE for The Daily** is 12-noon of the working day prior to publication on Mondays, Tuesdays, Wednesdays, and Thursdays. Submissions must be made in writing. E-Mail and 3-1/2" disks with WordPerfect or Word documents, IBM or Mac formats, encouraged. Include first and last name, department, and extension number. Ads will be run twice; for additional publication, resubmit or notify The Daily. Ads will not be repeated more than six times per term. Other items will be run once and repeated if space allows.



# The Daily

Published for the staff of Lane Community College

747-4501, ext. 2591

Thursday, February 10, 1994

Week 6 of Winter Term

Edited by Joan Aschim

## Today

- Faculty Council, 2:30-3 p.m., Board Room. Topic: student evaluations of faculty.
- Part-time:full-time faculty ratio discussion, 3 p.m., FOR 308 (see item below).
- Computer networks videoconference, 10 a.m., FOR 309.

## Faculty ratio topic of report, forum

The ratio of part-time to full-time faculty was a concern “discussed in virtually all department meetings” surveyed by Maxine Frauman on behalf of the Future Faculty Task Force, according to a Jan. 26 report to Faculty Council. The task force is charged with developing a vision of the ideal faculty in the year 2000, accounting for the forces of change. Some of the faculty ratio issues cited in the report:

- clarification of what part-time is
- equity
- impact on programs and curriculum
- impact on support staff
- impact on contracted faculty
- role of contracted to part-time faculty
- orientation and professional development
- institutional values
- long-term/short-term planning
- the benefit of part-time staff to college and community

Other issues identified in the report are organizational issues; technology; partnerships with the community; effective teaching, curriculum and instructional design; qualities of a new teaching staff; and future students.

The faculty union is sponsoring a forum for discussion of the part-time:full-time issue today at 3 p.m. in FOR 308. A flier announcing the forum poses several questions, including how the ratio affects the quality of education, the demands on department and administrative time, and the use of space, support services and other resources. Also asked is what are the interests and desires of part-time faculty, what are the ethics of employing part-time faculty with relatively low pay and uncertain job security, and what are the appropriate divisions of responsibility among part- and full-time instructors.

## Managers to meet

Managers' Forum will be held on Friday, Feb. 11, from 8:30-10 a.m., in FOR 308.

## Gallery hosts invitational drawing exhibit

The Art Department Gallery presents the Oregon Invitational Drawing Exhibition from Feb. 14-March 11. Participating artists are Rick Bartow of Newport, Robert Bibler of Salem, Clint Brown of Corvallis, Kathleen Caprario of Springfield, Jim Denney of Eugene, and George Johanson of Portland. Also included are Lane art instructors Bruce Dean, Satoko Okito, and Craig Spilman, all of Eugene. A reception for the artists will be held on Friday, Feb. 18, from 7-9 p.m., in the gallery.

## League for Innovation diversity project to be discussed

College Council will discuss a League for Innovation in the Community College program, “Expanding Leadership Diversity in Community Colleges,” at its Tuesday, Feb. 15 meeting. The meeting will be held from 3-5 p.m. in the Board Room.

## University to study Lane restructuring

University of Oregon professors Joan Acker and Don Van Houten will conduct a case study of Lane's restructuring over the next few months. They will be contacting various staff members to ask for interviews. They have been through Lane's research approval process and will maintain complete confidentiality. If you have any questions, please call the President's Office at Ext. 2200.

## Nominations due

Nominations for Outstanding Classified Employee of the Month for March are due Feb. 15 to Community and Economic Development. Call Ext. 2120 if you have questions or need a form.

*Lane Community College provides a quality learning experience in a caring environment.*



## Baseball camp to be held

Bob Foster and the Titan club baseball team will host a camp for young men ages 12-to-18 from Feb. 19-21. The camp is designed to teach advance drills in hitting, infielding, outfielding, catching, pitching and baserunning. The cost of the camp is \$50. All proceeds go to help offset expenses for the baseball team's upcoming season. For more information, please call Ext. 2215. T-shirts will be provided to all participants.

## Student writing contest winners selected

Congratulations to student writing contest winners Gary Hanamoto, Don Bucholtz and Elaine Wigget. The contest was conducted in preparation for "April is Community College Month." The first-place essay by Hanamoto, "Coming Out of the Woods," will be published in the spring class schedule. First- through third-place essays will be printed in The Daily in April. Prizes of \$125, \$100 and \$75 were awarded. Over 22 entries were submitted.

Judges were English instructors Sharon Thomas, Ken Zimmerman and Peter Jensen; Joan Aschim, Institutional Advancement; and Lisa Soverns, president of the Lane Writer's Club. Sponsors were Institutional Advancement; English, Foreign Language & Speech; The Writing Center; and The Lane Writer's Club. Prize money was provided by marketing funds. Special thanks to Thomas and to Julie Baker, Institutional Advancement, for coordinating the contest.

## Students from Japanese college may attend Lane

Fifty students from Saitama College in Japan may attend Lane. Saitama representative Dr. Misao Makino visited Lane on Feb. 2. The visit was coordinated by international student counselor Mason Davis.

## Two Lane staff participate in video on education reform

Donna Albro, affirmative action director, and Linda Fossen, vice president for student services, last month participated in the production of a training video for K-14 counselors on understanding and implementing education reform in Oregon. The video was produced at a statewide meeting hosted by Chemeketa Community College, with assistance from Oregon Department of Education staff.

---

### ADS

SPACE IS STILL AVAILABLE in my women's meditation retreat at glorious Breitenbush Hot Springs near Detroit, OR, March 11-13 (not an LCC class). \$170 includes lodging, food, instruction, and use of hot springs, steam sauna and trails. Retreat includes various meditation forms, yoga, silence and other healing arts. Please call for a flier and information letter. Shan Titus, Admissions, Ext. 2688, or 683-1873.

WE'RE BACK AGAIN this Feb. 11 & 14, 10 a.m.-5 p.m. Beautiful Valentine cards and gifts. Great prices! Come check it out! We're in front of the classified bulletin board in the cafeteria near espresso cart. Joel McClure, Campus Services, Ext. 2578 nights.

HELP! I won't be able to attend the Judy Collins Eugene Symphony concert on Feb. 19. 2 tickets available. Were \$25/each; will sell for \$18/each. Call Enid Leonard, Study Skills, Ext. 2075, or 686-4318.

SINGING VALENTINE! The Shynotes acappella group will sing to your sweetheart at office, home or restaurant on Valentines day. Times available between 11 a.m. and 7 p.m. depending on location. A unique way to say "I love you". A \$25 fee includes the singing of two love songs in 6 part harmony, and a rose. For more information call Rick Venturi, Specialized Employment Services, or Roy at 461-1287.

LOVING DOG needs great loving home with fenced yard. Black Lab/Miniature German Shepherd mix looks like black lab only smaller. Well trained, good with children and other animals; like dogs, cats, goats, horses. Please call Kim Bower at home at 342-1255. (ASLCC Child Care Co-op).

MOVING? NEED BOXES? We've got them. You can have them. Boxes from U Haul, Bekins, etc. We're not moving again for a long time! Needed: One set of interior wood shutters with approximately one-inch slats. Anybody know a source? Contact Jill McKenney, Math, Ext. 2401 or 2392.

JUST DETAILED BY A PRO! Pay off my 1993 GEO or arrange with SELCO to assume loan. I'm going yuppie (Volvo inspired). Lorna Funnell, Cont. Ed, Ext. 2906.

LET'S LET JAY MARSTON know that he is in our thoughts and is not forgotten. If you can contribute any of the following, send to Peggy Marston in Social Science, or take to the Social Science office to put into a special box: Notes, cards, valentines, poems, articles, cartoons, audio or video tapes of you and your departments, and yes, chocolate! And stop in at Study Skills to sign the banner. Deadline: Friday, Feb. 11.

PRE-ORDER YOUR VALENTINE balloon and rose bouquets from the Bookstore. Balloon bouquet, \$3.99 (1 mylar, 5 latex); single rose bouquet, \$4.95; double rose bouquet, \$7.95. Sign up to win a \$10 gift certificate from Euphoria Chocolates.

**DEADLINE for The Daily** is 12-noon of the working day prior to publication on Mondays, Tuesdays, Wednesdays, and Thursdays. Submissions must be made in writing. E-Mail and 3-1/2" disks with WordPerfect or Word documents, IBM or Mac formats, encouraged. Include first and last name, department, and extension number. Ads will be run twice; for additional publication, resubmit or notify The Daily. Ads will not be repeated more than six times per term. Other items will be run once and repeated if space allows.



# The Daily

Published for the staff of Lane Community College

747-4501, ext. 2591

Monday, February 14, 1994

Week 7 of Winter Term

Edited by Joan Aschim

## This week:

- Valentine's Day, today.
- Oregon Invitational Drawing Exhibition, Art Department Gallery presents, today-March 11.
- Instructional support staff, Tuesday, Feb. 15, ELC 206, 3-4 p.m.
- College Council, Tuesday, Feb. 15, 3-5 p.m., Board Room.
- Student Services directors, Wednesday, Feb. 16, 9-11 a.m., **PE 205**.
- Instructional Cabinet, Wednesday, Feb. 16, 1:30-3 p.m., **PE 205**.
- Degree requirement committee, Thursday, Feb. 17, 3:30 p.m., BUS 205.

## Instructional support staff to meet

The Instructional support staff will meet Tuesday, Feb. 15, in ELC 206, from 3-4 p.m. Send agenda items to Pam McClelland, Ext. 2459.

## College Council agenda

College Council will meet Tuesday, Feb. 15, from 3-5 p.m. in the Board Room. Participants in the League for Innovation program, "Expanding Leadership Diversity in Community Colleges," will observe the meeting. Agenda highlights:

- Downtown Center Task Force report
- full-time to part-time faculty issue
- budget reductions
- restructuring
- training for College Council

## TTT workshop will focus on grades

"TTT: Teachers Talking About Teaching" will meet Tuesday, Feb. 15, 3 p.m., CEN 420, to discuss grading practices, factors used in student grades, sources of grading data, and setting cutoffs for grades. The workshop will help participants (a) explore the advantages and disadvantages of various grading practices and (b) begin the process of reviewing options and devising sound grading practices. The workshop will use materials on classroom assessment from the Northwest Regional Education Laboratory. Jill McKenney will facilitate. Sponsor is the Faculty Professional Development Committee. Goodies from The Renaissance Room and a door prize will be included. - Sharon Thomas

## Degree committee to meet

The degree requirement committee will meet Thursday, Feb. 17, at 3:30 p.m. in BUS 205, to hear a report from the diversity committee on recommended courses to meet the ethnic/gender degree requirement for the associate of arts Oregon transfer degree. Visitors are welcome.

## Faculty professional development leave applications available

Faculty professional development leave applications for 1994-95 are available. Contracted faculty may apply for one, two or three terms of paid professional leave to do research, train for new assignments at Lane, or return to school. Contact Roxanne Flowerday or Pat John at Ext. 2439 for guidelines and applications. Due dates for proposals are May 1, 1994, Oct. 1, 1994, and Feb. 1, 1995.

## Mass to be held

Mass for Lent will begin on Feb. 16, Ash Wednesday, at 12 p.m. in PE 214. Mass will be held daily, excluding finals week and spring break, until March 31.

## Date changed for staff social

The all-staff casino-dance night has been rescheduled from April 22 to April 29. Help is needed with planning! To volunteer, contact Linda Myers, Ext. 2883.



### February is Black History Month

A book for Black History Month: *"Praying for Sheetrock" (1991) by Melissa Fay Greene. In the author's note: "McIntosh County, on the flowery coast of Georgia--small, isolated, lovely--experienced the same grand historical tremors and transformations as the rest of America in recent years as long-entrenched authority began to yield to the democratic demands of social and political outsiders.*

*"But in McIntosh, entrenched authority was not numberless white men, generals, captains of industry, and vast hierarchies of elected and appointed officials: It was one white man, Sheriff Tom Poppell. And the demands of social outsiders and political newcomers were not expressed by hundreds of eloquent leaders rising from the churches and universities, nor by hundreds of thousands of protesters in the streets: The new demands were worded by one stammering, uneducated, local black man, Thurnell Alston, a disabled boilermaker, standing in front of a hundred quiet country people.*

*"This is a chronicle of large and important things happening in a very little place. It is about the end of the good old boy era and the rise of civil rights, and what that famous epoch looked like, sounded like, smelled like, and felt like in a Georgia back-water in the 1970s."*

receive an associate degree in 1993-94, who will enroll as a junior in 1994-95 to earn a baccalaureate degree, and who has at least a 3.50 grade point average. For scholarship information, contact Velma Jesser in Business at Ext. 2157. For PTK membership information, contact Bette Dorris at Ext. 2340.

**\$** Scholarships of up to \$4,000 for displaced homemakers to pursue a college degree in accounting are available through the Women's Program. Contact Charlene Maclean at Ext. 2840 for more information.

## Holiday approaches

A week from today is the Presidents' Day Holiday. The college will be closed.

---

### THANKS

Many, many thanks from Patsy and Kate in the Women's Program to all the campus staff, faculty and work study students who helped us pull off another successful Women's Day on Jan. 29. Around 300 women attended, and evaluations were very positive concerning the helpfulness of event staff and the information received.

---

### ADS

FOR SALE: 1988 CHEVY NOVA, 4 door, one owner. excellent condition. 76,000 miles. \$3,950 Call 746-1201. (Sara Ulam, Food Services).

ROOM TO RENT in quiet townhouse complex. Seven minutes by freeway to LCC and close to U of O. Room is furnished, has a great view and private bath. Share kitchen and living area with one adult and Rocky the cat. Quiet, non-smoking, non-drinking environment. Prefer female. Must be responsible and have references. Available April 1. Call Ellice at Ext. 2023 or eves at 683-2771. \$260 includes utilities. Ellice Leichter, T&D.

TAI CHI/QIGONG WORKSHOP. Masters from China. Master A.L. Ye and Master George Xu will teach in Eugene Feb. 18-20 for all levels. Night of Feb. 18 for intermediate. Feb. 19 & 20 for all levels. Night of Feb. 19 will be partner exercise. Both masters have been featured in Tai Chi magazine and are internationally known. \$35 to \$144(full package). David Leung, Soc. Sci., Ext. 2836, or 686-6286. Additional 10% discount for LCC staff.

ADVENTUROUS WOMAN in 40s who enjoys nature seeks another female with similar interests for traveling companion. Eventual destination: Hawaii. Please leave message for Linda at 484-4971. Linda de Caccia, Counseling, Ext. 2204, or LCC at Cottage Grove, 942-4202

WE'RE BACK AGAIN this Feb. 114, 10 a.m.-5 p.m. Beautiful Valentine cards and gifts. Great prices! Come check it out! We're in front of the classified bulletin board in the cafeteria near espresso cart. Joel McClure, Campus Services, Ext. 2578 nights.

HELP! I won't be able to attend the Judy Collins Eugene Symphony concert on Feb. 19. 2 tickets available. Were \$25/each; will sell for \$18/each. Call Enid Leonard, Study Skills, Ext. 2075, or 686-4318.

**DEADLINE for The Daily** is 12-noon of the working day prior to publication on Mondays, Tuesdays, Wednesdays, and Thursdays. Submissions must be made in writing. E-Mail and 3-1/2" disks with WordPerfect or Word documents, IBM or Mac formats, encouraged. Include first and last name, department, and extension number. Ads will be run twice; for additional publication, resubmit or notify The Daily. Ads will not be repeated more than six times per term. Other items will be run once and repeated if space allows.

## Workshop offers women alternative career info

"Access," a one-day workshop for women interested in exploring non-traditional careers, will be held on Saturday, Feb. 19, from 9 a.m.-4 p.m., in PE 205. Participants will be able to meet women who are working in non-traditional fields, understand apprenticeship training, explore myths and stereotypes about "women's work," match interests with career options, and develop a career plan. The workshop is available for one credit under registration No. 735. For more information, call the Women's Center at Ext. 2353, or Ann Clark at Ext. 2382.

## Scholarships available

**\$** The Guistwhite scholar program seeks Phi Theta Kappa members who already have been installed as scholars. Ten stipends of \$5,000 each will be awarded to a PTK member who will



# The Daily

Published for the staff of Lane Community College

747-4501, ext. 2591

Tuesday, February 15, 1994

Week 7 of Winter Term

Edited by Joan Aschim

## Today:

- Instructional support staff, ELC 206, 3-4 p.m.
- College Council, 3-5 p.m., Board Room.
- Teachers Talking About Teaching, 3 p.m., CEN 420.
- Deadline to nominate March outstanding classified employee; contact Community & Economic Development.

### *shared decision-making news*

## Board prefers tuition increase over program cuts

The Board of Education on Feb. 9 directed administration to prepare a budget recommendation based on a \$4 tuition increase and certain spending cuts that avoid the elimination of programs. The direction came after discussing a variety of ways to meet an anticipated deficit of \$1.3 million. Moskus said either a tuition increase or budget cuts or a combination would be necessary to eliminate the deficit. He presented four possible packages of reductions linked to tuition. If no tuition increase were adopted, all four packages of reductions would be necessary; if a \$1 per hour tuition increase were adopted, only three of the packages of reductions would be necessary, and so on. Moskus said that like last year, recommending a program cut was extremely difficult because all of Lane's programs are high quality. "These are not recommendations we want to make. They're recommendations we have to make." The board chose the last option, a \$4 tuition increase, plus a few cuts in one of the packages which stopped short of eliminating any programs.

College Council reviewed the options a day earlier. A hand-out distributed at council was updated by board time; if you need a current copy, contact the President's Office at Ext. 2200. Moskus said any individual may respond in writing to any member of Executive Cabinet, or to the board via the President's Office.

In other business:

- Board policy on student media may be revised. Journalism instructor and Torch advisor Pete Peterson will work with President's Office staff and legal counsel on a possible revision by March.
  - The grading system at Lane was discussed, including use of a Y grade. The board asked to hear the results of Faculty Council and Office of Instruction collaboration.
  - A revised restructuring document was distributed, showing changes made to date based on feedback. Moskus hopes to implement restructuring in March.
  - Personnel changes approved were the early retirement of Jolene Bowers from Student Records/Veteran's Office, the appointment of aviation maintenance instructor Gary McKenzie to full-time, and the appointment of Susan Mandrapa as a .80 FTE instructor in nursing.
  - Degree programs for architectural and mechanical technical drafting were approved.
  - The academic calendar for 1994-95 was approved.
- The next regular meeting of the board is scheduled for March 9.

## Non-traditional students make state's list of best

Lane students Gary Hanamoto and Cindy Rubash are on the 1994 Oregon Student Scholars All-State Team. President Jerry Moskus and Gov. Barbara Roberts have honored them at luncheons. The all-state team is co-sponsored by the Oregon Community College Association, the Oregon State Board of Education Office of Community College Services, and the Western Center for Community College Professional Development at Oregon State University. Both students are members of the Lane chapter of Phi Theta Kappa, the honor society for two-year colleges, and have been nominated for the National Community College Academic All-American Team co-sponsored by PTK, the American Association of Community Colleges, and USA Today. Results of that contest will be announced in April.

Hanamoto, 38, will graduate in June with an associate degree in science. He plans to enroll at Oregon State University this summer to study horticulture and prepare for a career in turf management. He joined the Dislocated Worker Program at Lane and enrolled for classes in 1991, the year of the Weyerhaeuser Wood Products Company mill closure where he had worked for 13 years.

Rubash, 44, will graduate in June with an associate of arts and an associate of science in pre-engineering. She will attend Oregon State University to study engineering and prepare for a teaching career at the high school or community college level. She worked for 20 years in credit and collections and bookkeeping until she developed chronic overuse symptoms, similar to carpal tunnel syndrome. The Career Information Center at Lane helped her identify a new occupation. She has a daughter currently enrolled at Lane, and has advised two sons to enroll here when they graduate from high school. She tutors other students in the Math Resource Center.

*Lane Community College provides a quality learning experience in a caring environment.*



### February is Black History Month

*In conjunction with Black History Month, the library has compiled a list of films and video tapes covering such topics as the civil rights movement and its leaders, African American literature, music and dance, the anti-apartheid movement in South Africa, and other subjects related to black history. For copies of the list of films and video tapes for Black History Month, contact Dan Moret at Ext. 2318.*

## Athletics to dedicate game proceeds to Marston fund

On Saturday, Feb. 19, the Athletic Department will dedicate the gate proceeds from the Mt. Hood vs. Lane women's and men's basketball games to the Jay Marston Endowment Fund. The endowment will fund scholarships for deserving science students. "This will

be a great opportunity to collectively show our appreciation for the contributions that Jay has made to the college and community," says a department flyer announcing the dedication. "The fund has reached \$7,000 and we're hoping to reach \$10,000 in the near future." The women's game begins at 6 p.m. and the men's game at 8 p.m. There will be a battle of the bands during all breaks. Donations will be accepted at the door in lieu of the posted admission prices. Checks can be made payable to the Jay Marston Endowment Fund.

## Portland teams defeated

Both of Lane's women's and men's basketball teams defeated Portland Community College rivals on Saturday night. Lane women won 59-44 and the men scored 106 over Portland's 82. The Titans play their last regular season home game this Saturday (see above). Don't miss the action!

## Secretary of state to visit class

Oregon Secretary of State Phil Keisling will speak to Steve Candee's American Government class on Friday, Feb. 25, at 10 a.m. and 11 a.m. in the Board Room. His topics will include term limits and the use of the initiative process. Space is limited, but guests are welcome.

## Oregon Chautauqua program request for proposals

The Oregon Council for the Humanities invites Oregon scholars to become part of one of the state's finest cultural programs and to bring the humanities to the people of Oregon. The Oregon Chautauqua gives humanities scholars and members of the general public an opportunity to discuss and explore the disciplines of the humanities and their relevance to everyday life. Sponsors of Chautauqua programs select programs from an annually produced catalog. Honoraria and travel expenses for their programs are paid by OCH.

If you have a unique lecture or presentation which you feel might appeal to the residents of Oregon, OCH encourages you to apply. The 1994-95 catalog will be distributed and in effect for a 12-month period beginning September 1994. For more details or an application form, contact Dan Armstrong in English at Ext. 2424.

## Lane student pictured in Community College Week

The photo of Native American student Harold Wright, Jr., on page one of the winter class schedule also appears in Jan. 31 issue of Community College Week with a story about Native American student groups nationwide. The photographer is Susan Sutton of Institutional Advancement.

### ADS

SLIP-SLIDING AWAY, SO DON'T DELAY: "LANDSCAPES OF ENGLAND" 10-day EF educational tour departing June 9. \$1,315 fee (add \$170 if you're over 25) includes round trip air fare from Portland, 8 nights hotel (private facilities), continental breakfast and dinner daily, 8 visits to special attractions, and 3 optional excursions, one evening of theater, all transfers and transportation, 3-day visitor travel card valid on the underground, and some sightseeing discounts, with a professional EF tour guide. Travel with a group of LCC folks with Sharon Thomas, LCC instructor of English literature, as counselor/chaperone. For application forms and other information, call Sharon Thomas, English department, Ext. 2145. Deadline for application and fees is March 4. Call today!

FOR SALE: 1988 CHEVY NOVA, 4 door, one owner, excellent condition. 76,000 miles. \$3,950 Call 746-1201. (Sara Ulam, Food Services).

TAI CHI/QIGONG WORKSHOP. Masters from China. Master A.L. Ye and Master George Xu will teach in Eugene Feb. 18-20 for all levels. Night of Feb. 18 for intermediate. Feb. 19 & 20 for all levels. Night of Feb. 19 will be partner exercise. Both masters have been featured in Tai Chi magazine and are internationally known. \$35 to \$144(full package). David Leung, Soc. Sci., Ext. 2836, or 686-6286. 10% discount for LCC staff.

ADVENTUROUS WOMAN in 40s who enjoys nature seeks another female with similar interests for traveling companion. Eventual destination: Hawaii. Please leave message for Linda at 484-4971. Linda de Caccia, Counseling, Ext. 2204, or LCC at Cottage Grove, 942-4202

**DEADLINE for The Daily** is 12-noon of the working day prior to publication on Mondays, Tuesdays, Wednesdays, and Thursdays. Submissions must be made in writing. E-Mail and 3-1/2" disks with WordPerfect or Word documents, IBM or Mac formats, encouraged. Include first and last name, department, and extension number. Ads will be run twice; for additional publication, resubmit or notify The Daily. Ads will not be repeated more than six times per term. Other items will be run once and repeated if space allows.



# The Daily

Published for the staff of Lane Community College

747-4501, ext. 2591

Wednesday, February 16, 1994

Week 7 of Winter Term

Edited by Joan Aschim

## Today:

- Student Services directors, 9-11 a.m., **PE 205**.
- Mass for Lent, 12 p.m., PE 214. Mass will be held daily, excluding finals week and spring break, until March 31.
- **Not today:** The Instructional Cabinet meeting that had been set for today is canceled.

### *shared decision-making news*

## Faculty Council report

Beth Naylor of Family and Heath Careers presented a revised copy of the student-faculty evaluation to Faculty Council at its Feb. 10 meeting. Naylor said the evaluation will be administered in both credit and non-credit classes beginning at the end of winter term. The meeting lasted one-half hour so council members were free to attend a faculty union forum on the part-time/full-time faculty issue.

## Faculty notice

Attention faculty: The level change packets for 1993-94 are now available in Personnel Services. An informational meeting will be held on Wednesday, Feb. 23, at 3 p.m. in PE 239 for those who need more information or instructions on how to proceed with the applications. Contact Jill McKenney at Exts. 2401 or 2392, or Bob Creed at Ext. 2545 for further details.

## Artists to discuss their work

Artists in the Art Department Gallery Oregon Invitational Drawing Exhibition will discuss their work on Tuesday, Feb. 22, at 10 a.m. in the gallery. Speaking will be Kathleen Caprario, Jim Denney, Bruce Dean, Satoko Okito and Craig Spilman.

Don't miss a reception for the artists this Friday, Feb. 18, from 7-9 p.m., also in the gallery. The exhibit features the work of nine artists from around the state. The gallery is open Mondays through Thursdays from 8 a.m. to 10 p.m. and Fridays from 8 a.m. to 5 p.m.

## Continuing Education forms partnership with Thurston High

Lane will offer seven Continuing Education classes and one credit class at Thurston High School spring term on Tuesday and Wednesday evenings. The arrangement is a part of Continuing Education's expanded partnership project which this term includes classes at Willamette High School and the Emerald Job Center.

## Financial Aid schedules student loan exit interviews

Federal regulations require that students receiving a Federal Stafford Loan or a Federal SLS Loan while attending Lane must attend an exit interview during their last term of attendance. The exit interview outlines financial planning, disclosure statements, repayment procedures, how to correspond with the lender, secondary markets, loan consolidation, options for making payments, and the consequences of default. The schedule of student loan winter term exit interviews follows. Sessions will begin on time and latecomers cannot be admitted. Each session will last approximately 50 minutes.

Monday, Feb. 28	10 a.m.	Health 105
	2 p.m.	Forum 307
	6 p.m.	Forum 307
Thursday, March 3	9 a.m.	Forum 307
	1 p.m.	Forum 309
	4 p.m.	Forum 307

## Respiratory care students impress hospital

The supervisor of respiratory care services at Sacred Heart wrote recently to compliment Lane students. "I want to say again how great this second year class has been to work with. They are so eager and motivated to learn and work. I can speak for the staff and say it is exciting to have this caliber of professional coming into the field of respiratory care."

*Lane Community College provides a quality learning experience in a caring environment.*



## Evening of short plays held over

Performing Arts Department production of six short plays has been extended one weekend. According to Phyl Kerns of Eugene Weekly, "Our hearts long for communicative theater. For proof, come to this warm wonderful Lane production of great plays." Being performed are "Sure Thing" by David Ives, "Lord Byron's Love Letter" by Tennessee Williams, "Come and Go" by Samuel Beckett, "Salzburg Dance of Death" by Bertolt Brecht, "Present Tense" by John McNamara, and "The Problem" by A.R. Gurney, Jr.

Remaining performances are Friday and Saturday, Feb. 18 and 19, at 8 p.m. in the Blue Door Theater. Tickets are \$4. Call in advance to ensure tickets at Ext. 2202 afternoons.

## Disposal of microcomputer software

The Software Publisher's Association establishes standards for the software industry. Its regulations prohibit end users to dispose of no longer useful software in any other method than to transfer it within the institution. Purchasing Services hopes to establish an LCC "software bank" to facilitate the exchange of surplus software between departments. If you have any surplus software which you might contribute to in the bank, please call Lloyd Rain at Ext. 2208.

## Oregon's high school dropout rate shows slight decline

Oregon's high school dropout rate has declined slightly, according to the Oregon Department of Education. The rate for a one-year period ending June 30, 1993, is 5.69 percent, down from 5.75 the previous year. That translates into a four-year figure of 21.4 percent, down from 21.6 percent. This is the fourth straight year the rate has dropped, but it is the smallest decline.

The rate for African American students fell to 8.6 from 12.4 percent, but for Hispanics rose to 14.0 from 12.5 percent. The rate is up to 9.2 from 9.0 percent for Native Americans, down to 3.7 from 3.9 percent for Asian Americans, and stayed the same at 5.2 percent for white students.

Reports filed by school districts show that students are more likely to drop out of large high schools. The rate in schools with more than 600 students is 6.2 percent compared to 2.3 percent for schools with less than 75 students. Thirty-eight percent of dropouts were enrolled in the reporting school district for a year or less and 15 percent were in the district two months or less. Reasons for leaving most often cited by school personnel include non-attendance, independent living burdens, unstable home situation and full- or part-time work.

## Athletics to dedicate game proceeds to Marston fund

On Saturday, Feb. 19, the Athletic Department will dedicate the gate proceeds from the Mt. Hood vs. Lane women's and men's basketball games to the Jay Marston Endowment Fund. The endowment will fund scholarships for deserving science students. "This will be a great opportunity to collectively show our appreciation for the contributions that Jay has made to the college and community," says a department flyer announcing the dedication. "The fund has reached \$7,000 and we're hoping to reach \$10,000 in the near future." The women's game begins at 6 p.m. and the men's game at 8 p.m. There will be a battle of the bands during all breaks. Donations will be accepted at the door in lieu of the posted admission prices. Checks can be made payable to the Jay Marston Endowment Fund.

---

### ADS

NOTETAKER NEEDED in R.V. Tech, Monday-Thursday, 8-10:30 a.m., as needed. Contact Jane Phillips-Love in Disabled Student Services, Ext. 2150.

SLIP-SLIDING AWAY, SO DON'T DELAY: "LANDSCAPES OF ENGLAND" 10-day EF educational tour departing June 9. \$1,315 fee (add \$170 if you're over 25) includes round trip air fare from Portland, 8 nights hotel (private facilities), continental breakfast and dinner daily, 8 visits to special attractions, and 3 optional excursions, one evening of theater, all transfers and transportation, 3-day visitor travel card valid on the underground, and some sightseeing discounts, with a professional EF tour guide. Travel with a group of LCC folks with Sharon Thomas, LCC instructor of English literature, as counselor/chaperone. For application forms and other information, call Sharon Thomas, English department, Ext. 2145. Deadline for application and fees is March 4. Call today!

FOR SALE: 1988 CHEVY NOVA, 4 door, one owner, excellent condition. 76,000 miles. \$3,950 Call 746-1201. (Sara Ulam, Food Services).

TAI CHI/QIGONG WORKSHOP. Masters from China. Master A.L. Ye and Master George Xu will teach in Eugene Feb. 18-20 for all levels. Night of Feb. 18 for intermediate. Feb. 19 & 20 for all levels. Night of Feb. 19 will be partner exercise. Both masters have been featured in Tai Chi magazine and are internationally known. \$35 to \$144(full package). David Leung, Soc. Sci., Ext. 2836, or 686-6286. 10% discount for LCC staff.

ADVENTUROUS WOMAN in 40s who enjoys nature seeks another female with similar interests for traveling companion. Eventual destination: Hawaii. Please leave message for Linda at 484-4971. Linda de Caccia, Counseling, Ext. 2204, or LCC at Cottage Grove, 942-4202

**DEADLINE for The Daily** is 12-noon of the working day prior to publication on Mondays, Tuesdays, Wednesdays, and Thursdays. Submissions must be made in writing. E-Mail and 3-1/2" disks with WordPerfect or Word documents, IBM or Mac formats, encouraged. Include first and last name, department, and extension number. Ads will be run twice; for additional publication, resubmit or notify The Daily. Ads will not be repeated more than six times per term. Other items will be run once and repeated if space allows.



# The Daily

Published for the staff of Lane Community College

747-4501, ext. 2591

Thursday, February 17, 1994

Week 7 of Winter Term

Edited by Joan Aschim

## Today:

- Degree requirement committee, 3:30 p.m., BUS 205.
- Multicultural Center social hour, every Thursday from 1:30-3 p.m., CEN 409.
- **Not today:** The Facilities Management Committee will not meet today.

## Meetings called to address personal safety concerns

The Women's Center is sponsoring three meetings to address concerns about personal safety. Concerns arose from Karen McGowan's column in the Feb. 15 issue of The Register-Guard regarding an assault. Although the assault was off-campus, both the victim and suspect are Lane students. The meetings are open to all interested staff and students. Spread the word. The meetings will be held:

- Thursday, Feb. 17, 3:30-5 p.m., PE 205
- Friday, Feb. 18, 1-3 p.m., CEN 321
- Tuesday, Feb. 22, 3-5 p.m., CEN 321

### *shared decision-making news*

## Classified Council report

Classified Council continued its review of employee suggestions at its Feb. 9 meeting. Council decided to initially review each suggestion to determine if it addresses at least one college goal, and whether it can be implemented with existing resources. Members acknowledged that council does not have policy-making authority but could forward recommendations or request more information regarding particular suggestions. A file of suggestion responses will be set up in the Library for interested staff. Council has reviewed six out of 26 suggestions received so far.

## Board member to run for commission

Board of Education Vice Chair Cindy Weeldreyer announced at the Feb. 9 board meeting her candidacy for the Lane County Commissioners east Lane seat being vacated by Marie Frazier. Weeldreyer has served as assistant to Frazier for the last year and a half.

## Instructor hospitalized

Dennis Gilbert, physics instructor, suffered a heart attack last week and had triple bypass surgery this week. For those wishing to send cards, he is presently in the intensive care unit at Sacred Heart, 1255 Hilyard, Eugene 97401.

## Information about state's industries to be presented

The Benton Lane Linn Regional Strategy Board will meet on main campus on Friday, Feb. 18, from 8 a.m.-4 p.m. in FOR 308-309. The board will hear presentations from nine key industries from around Oregon. The meeting is open to the public and guests are welcome. The nine industries are environmental services, high technology, bio-technology, computer software, metals, interstate tourism, agriculture, fisheries, and forest and secondary wood products. For more information, call Community and Economic Development at Ext. 2120.

## Meet the artists

A reception for artists participating in the Art Department Gallery's Oregon Invitational Drawing Exhibition will be held Friday, Feb. 18, from 7-9 p.m., in the gallery.

## Workshop offers women alternative career info

"Access," a one-day workshop for women interested in exploring non-traditional careers, will be held on Saturday, Feb. 19, from 9 a.m.-4 p.m., in PE 205. Participants will be able to meet women who are working in non-traditional fields. The workshop is available for one credit (registration No. 735). For more information, call the Women's Center at Ext. 2353, or Ann Clark at Ext. 2382.

*Lane Community College provides a quality learning experience in a caring environment.*



### February is Black History Month

Historian William Anderson wrote in "The Wild Man from Sugar Creek" (1975), "Georgia had uniquely thwarted the rush of history in 1976 by creating an addition to her primary electoral system which guaranteed rural domination of state politics. The popular vote was, in effect, disfranchised. Also voided was the vote of minority groups who had fled to the cities." In quoting him, author Melissa Fay Greene in "Praying for Sheetrock" (1991) adds: "The courthouse gangs tended not only to monopolize the local sources of wealth but to locate, exploit and ultimately control the illegal sources of wealth as well. Nowhere was this accomplished with more flair, daring and finesse than in McIntosh County. Sheriff Poppell earned a pleasant income for enforcing the law ... but he earned a magnificent income for flouting the law in the county. Because he did the first capably, the law-abiding citizens, safe in their beds, didn't trouble themselves much about the second."

Women's studies instructor Patsy Raney will present "Cuban Women and the Challenge of the 'Special Period'." She will show slides and talk about her participation in a women's delegation to Cuba to discuss current issues and problems facing Cuban women.

## International-Intercultural Committee to meet

The International-Intercultural Committee will meet on Tuesday, Feb. 22, from 3:30-4:30 p.m. in M&A 245. The agenda will include planning for "Kenya Week" to be held April 18-23. Mareen Rice, Family and Health Careers instructor, also will show slides and tell of her recent trip to Irkutsk.

## Faculty leave committee offers information session

The faculty professional development long-term leave committee will hold an information session March 1 from 3-4 p.m. in PE 205. The committee will review guidelines, procedures and the process for granting leaves. Call Roxanne Flowerday or Pat John in Study Skills at Ext. 2439 for more information.

## Faculty notice

Attention faculty: The level change packets for 1993-94 are now available in Personnel Services. An informational meeting will be held on Wednesday, Feb. 23, at 3 p.m. in PE 239 for those who need more information or instructions on how to proceed with the applications. Contact Jill McKenney at Exts. 2401 or 2392, or Bob Creed at Ext. 2545 for further details.

## Holiday

Monday, Feb. 21, is the Presidents' Day Holiday. The college will be closed.

---

### JOBS

- Instructor of Spanish; English, Foreign Language & Speech Department; Faculty; closes 3/14.

---

### ADS

NOTETAKER NEEDED in R.V. Tech, Monday-Thursday, 8-10:30 a.m., as needed. Contact Jane Phillips-Love in Disabled Student Services, Ext. 2150.

ARE YOU ADVENTUROUS? Do you like to socialize with others in pursuit of outdoor activities? Do you have skill in an outdoor activity that you'd like to share with others? Check out LAFFS, Lane's Adventurous Faculty Fun Seekers. Some possible activities could include: Biking, hiking, walking, running, rafting, sailing, swimming, kayaking, snorkeling, water skiing, snow skiing, climbing, camping or whatever.

THE NINTH ANNUAL OREGON ASIAN CELEBRATION will be held on Sunday, Feb. 20, 10 a.m.-6 p.m., at the Lane County Fairgrounds. Admission is \$3. Children 12 and under free. Asian foods, performances, arts and crafts, cooking demos, martial arts, marketplace. Sponsored by Eugene-Springfield Asian Council. (Tom Reimer, Math, Ext. 2392.)

**DEADLINE for The Daily** is 12-noon of the working day prior to publication on Mondays, Tuesdays, Wednesdays, and Thursdays. Submissions must be made in writing. E-Mail and 3-1/2" disks with WordPerfect or Word documents, IBM or Mac formats, encouraged. Include first and last name, department, and extension number. Ads will be run twice; for additional publication, resubmit or notify The Daily. Ads will not be repeated more than six times per term. Other items will be run once and repeated if space allows. Send submissions through intercampus mail to The Daily or deliver to the in-basket outside ADM 210.

## Saturday's game dedicated to Jay Marston

Gate proceeds from the Saturday, Feb. 19 women's and men's basketball games will be donated to the Jay Marston Endowment Fund. The endowment will fund scholarships for deserving science students. The women's game begins at 6 p.m. and the men's game at 8 p.m.

## Brown bag lunch topic features women in Cuba

The Women's Program will sponsor a brown bag lunch on Tuesday, Feb. 22, 11:30 a.m.-1 p.m., Board Room.



# The Daily

Published for the staff of Lane Community College

747-4501, ext. 2591

Tuesday, February 22, 1994

Week 8 of Winter Term

Edited by Joan Aschim

## This week:

- Artists' gallery talk, today, 10 a.m., Art Department Gallery.
- Bill Morrisette, cafeteria, today, 11 a.m.-1 p.m. (See next page).
- Women's Program brown bag lunch, today, 11:30 a.m.-1 p.m., Boardroom. Topic: Cuban Women.
- Travelogue to Russia, slide-talk with Maureen Rice, 12-1 p.m., HEA 263.
- Women's Center open meeting on personal safety, today, 3-5 p.m., CEN 321.
- International-Intercultural Committee, today, 3:30-4:30 p.m., M&A 245.
- Community & Economic Development cabinet, Wednesday, Feb. 23, 1:30-3:30 p.m., PE 205.
- Classified Council, Wednesday, Feb. 23, 3-5 p.m., Downtown Center.
- Faculty level change information session, Wednesday, Feb. 23, 3 p.m., PE 239.
- Curriculum Approval Committee, Wednesday, Feb. 23, 3-4:30 p.m., Boardroom. (See next page.)
- Faculty Council, Thursday, Feb. 24, 3-4:30 p.m., Boardroom.
- Secretary of State Phil Keisling, Friday, Feb. 25, 10 a.m. and 11 a.m., Boardroom.
- Mass for Lent, daily at noon in PE 214 until March 31 (except finals week and spring break).

## Notice: change in use of social security numbers

Chapter 806 of the 1993 session laws requires the State Board of Education to adopt, by rule standards, for the creation, use, custody and disclosure, including access, of student education records that are consistent with the requirements of state and federal laws. As a part of complying with these new rulings, Lane will be reviewing for modification all forms that require students to provide their social security numbers or student identification numbers. If you have any forms that meet this criteria, please submit a copy of each form to Jolene Bowers in Student Records by the end of February. If the form is used for purposes other than normal record-keeping, or is ever released to a third party, provide that information as well. Thanks for your cooperation. Questions? Call Ext. 2693.

### *shared decision-making news*

## College Council report

### Part-time to full-time faculty ratio

College Council discussed the part-time to full-time faculty ratio issue at its Feb. 15 meeting. Council member Maxine Frauman said that the ratio came up in all of her interviews on behalf of the Future Faculty Task Force. She uncovered these questions:

- How can we manage a quality program with so many part-time faculty?
- Should part-timers be expected to serve on department committees?
- What are the true "flexibility" needs?
- What do we model for our students about the working world?
- Are we interested in quantity or quality?

Frauman also noticed these themes:

- Ethics, values, and/or equity in use of part-timers
- definition of part-time faculty
- impact of large number of part-timers on staff, students and curriculum
- replacement of contracted with part-time faculty
- maintaining the college culture

Council also reviewed state and national comparative data, some of which was dated, that showed Lane's ratio to be less severe than some. Nonetheless, concerns must be resolved, council agreed.

Council member Don Micken of the faculty union said he will do a survey to further gather information. Patti Lake, Tom Wayne and Larry Warford will help Frauman continue her studies.

### Budget

In reviewing last week's Board of Education inclination to meet the budget deficit by increasing tuition rather than cutting programs, council member Linda Fossen of Student Services said the Tuition Committee may recommend a \$5 increase. President Jerry Moskus said while he understands the desire to avoid program cuts, a steep tuition increase could be "putting Measure 5 on the backs of our students." Tuition Committee membership includes student representation.

### Restructuring

Council reviewed a revised restructuring proposal. Moskus said the revision would be distributed to all staff. Staff should respond within a week to the second proposal. Moskus hopes to implement restructuring in March.



## Candidate on campus today

Bill Morrisette, Springfield mayor and county commissioner candidate, will be in the Lane cafeteria today from 11 a.m. to 1 p.m., to meet and talk with students and staff about important issues.

## Curriculum committee to meet

The Curriculum Approval Committee will meet on Wednesday, Feb. 23, from 3-4:30 p.m. in the Boardroom. On the agenda: proposed revisions to Chairside Procedures I, Preparatory Vocabulary SKD 85, and Astronomy GS 107. New course proposals are Perinatal Chemical Dependency Counseling Case Practicum HS 217, Special Studies: Music MUS 299, and Emergency Medical Technician.

## Secretary of state to visit class

Oregon Secretary of State Phil Keisling will speak to Steve Candee's American Government class on Friday, Feb. 25, at 10 a.m. and 11 a.m. in the Boardroom. His topics will include term limits and the use of the initiative process. Space is limited, but guests are welcome.

## Recovering

Dennis Gilbert, physics instructor, is recovering at home from heart surgery performed last week. He is depending on support groups for the first two weeks and we at Lane are asked to help with his dinner meals. Anyone interested in supplying a dinner, please call Gail at 342-1102. She is coordinating the support group. The only dietary requirements are low fat and low salt. - Marna Crawford, Campus Ministry

## Team leadership training available

Lane has been and continues to do more of its work through teams. It is generally recognized that teams succeed through highly skilled team leadership. If you are in a position of team leadership, here's a training opportunity: Team leadership training, a seven-unit series using the highly-regarded Zenger-Miller program, is scheduled for alternating Thursday mornings from March 1-May 24, at the Downtown Center. Sponsored and funded by the Management Professional Development Team, the few remaining spaces are open to managers, classified staff or faculty. Call Peg Allison at Ext. 2923 for a brochure or to sign up.

---

### THANKS

Thanks to the Foodservices staff who impressed my visitors from the Oregon Council on Marketing and Public Relations on Feb. 11, with superior customer service and very good food, in spite of many last-minute changes from me. You did a wonderful job! - Joan Aschim, Institutional Advancement

---

### ADS

WONDERFUL FAMILY RABBIT free to good home. Two-year-old female California rabbit, loves people, semi-housebroken, needs a good home. She comes complete with cage and accessories. Please leave message for Karen at 683-3752. (Karen Schwartzrock, Bus. Dept.)

ARE YOU ADVENTUROUS? Do you like to socialize with others in pursuit of outdoor activities? Do you have skill in an outdoor activity that you'd like to share with others? Check out LAFFS, Lane's Adventurous Faculty Fun Seekers. Some possible activities could include: Biking, hiking, walking, running, rafting, sailing, swimming, kayaking, snorkeling, water skiing, snow skiing, climbing, camping or whatever. **If you are interested, please contact Lyndell Wilken, Ext. 2573, or Wes Chamberlain, Ext. 2271, in H&PE.**

HOMELESS, 2 ADULTS, NO PETS--Well, soon as escrow closes, anyway. Looking for a two-month rental, house sit, caretake job, or ??? We need to move the last weekend of March and can't get into our new place until sometime in May. Joe Freeman, Co-op Ed., Ext. 2203, or home, 344-6468.

FOR SALE: Spring cometh. Bike paths beckoneth. Such a deal on a 1992 TREK 1420 extra-light sport-touring bicycle (62 cm., Shimano 105/Deore components). Rode it in '92 Cylce Oregon V. Great bike. \$930 when new. Best offer. Please contact Jerome Garger, E,FL&S, Ext. 2162, or 345-7175.

FOR SALE: SELMER CLARINET, Series 9, professional model, with case and extra mouthpiece. Good condition, nice tone. \$425 or best offer. Call me at home days, or after 9 p.m. evenings, at 345-5665. (Larry Cox, ABE/GED.)

FOR SALE: 16-1/2 ft. Terry camp trailer. Very clean. \$1,000 firm. Brenda Crume, BEC, Ext. 2936, or 461-7988.

NOTETAKER NEEDED in R.V. Tech, Monday-Thursday, 8-10:30 a.m., as needed. Contact Jane Phillips-Love in Disabled Student Services, Ext. 2150.

**DEADLINE for The Daily** is 12-noon of the working day prior to publication on Mondays, Tuesdays, Wednesdays, and Thursdays. Submissions must be made in writing. E-Mail and 3-1/2" disks with WordPerfect or Word documents, IBM or Mac formats, encouraged. Include first and last name, department, and extension number. Ads will be run twice; for additional publication, resubmit or notify The Daily. Ads will not be repeated more than six times per term. Other items will be run once and repeated if space allows. Send submissions through intercampus mail to The Daily or deliver to the in-basket outside ADM 210.



# The Daily

Published for the staff of Lane Community College

747-4501, ext. 2591

Wednesday, February 23, 1994

Week 8 of Winter Term

Edited by Joan Aschim

## Today:

- Community & Economic Development cabinet, today, 1:30-3:30 p.m., PE 205.
- Classified Council, today, 3-5 p.m., Downtown Center.
- Faculty level change information session, today, 3 p.m., PE 239.
- Curriculum Approval Committee, today, 3-4:30 p.m., Boardroom.

## Collaborative learning discussion group starting up

The Inquiry Group on Cooperation and Collaboration in the classroom, sponsored by the Faculty Professional Development Team, has decided to meet monthly for discussion of this topic. The first meeting will be held on Tuesday, March 1, from 3-4 p.m. in CEN 420. All interested faculty are invited to join. If you would like a copy of the article "Collaborative Learning: Shared Inquiry as a Process of Reform" that the group will read prior to the meeting, please call Maxine Frauman, Ext. 2253.

## Classified Council agenda

Classified Council meets today from 3-5 p.m. at the Downtown Center, Room 235. Agenda highlights: how part-time faculty impact classified staff, and submissions to the suggestion box. David Schiappa, Ext. 2405, will facilitate. The next meeting will be March 9.

## Faculty Council agenda

Faculty Council will meet Thursday, Feb. 24, from 3-4:30 p.m. in the Boardroom. Agenda highlights: grades, 1994-95 inservice, and council's role in the part-time to full-time faculty ratio policy discussion. The next meeting will be March 10.

## Learn about quality, leadership and organizational change

"Quality, Leadership and Organizational Change," a seven-part seminar series live and interactive via satellite, begins Thursday, Feb. 24, from 9:30 a.m. to noon in the Boardroom. The series is cosponsored by Lane and the Chambers of Commerce of Springfield and Eugene and will feature guest speakers John Naisbitt, Stephen Covey, Brian Joiner, Clare Crawford-Mason, Lloyd Dobyns, A. Roger Merrill, Jim Belasco, Jeremy Main, and Howard Blackiston. To register, call Business and Industry Services at Ext. 2255.

## Spring radiothon about to begin

KLCC's on-air campaign for new members and membership renewals begins Thursday, March 3, at 5 a.m. during "Morning Edition." The pre-radiothon campaign is already underway. For an official "Thonbuster" form, visit the office or call Ext. 2224.

## Business center to cosponsor Jane Applegate seminar

National columnist and small-business consultant Jane Applegate will share business strategies and participate in a panel discussion on Tuesday, March 1, from 9 a.m. to noon, at the Downtown Athletic Club, in a seminar cosponsored by Lane's Business Development Center and The Register Guard. For registration information, call Ext. 2255.

## Team leadership series will be on Tuesdays

The Zenger-Miller team leadership training series will be held alternating Tuesday mornings (not Thursdays) from March 1-May 24 at the Downtown Center. Call Peg Allison at Ext. 2923 for a brochure or to sign up.

## Faculty leave committee offers information session

The faculty professional development long-term leave committee will hold an information session on Tuesday, March 1, from 3-4 p.m. in PE 205. The committee will review guidelines, procedures and the process for granting leaves. Call Roxanne Flowerday or Pat John in Study Skills at Ext. 2439 for more information.

*Lane Community College provides a quality learning experience in a caring environment.*



## AAWCC to hold planning meeting

Members of the Lane chapter of the American Association of Women in Community Colleges are invited to a planning meeting on Monday, Feb. 28 from noon to 1 p.m. in PE 205 to talk about event planning for the rest of the year. Agenda items include discussion of a teleconference and proposals for other events. Special guests Patti Cake-Flake, international business consultant, and Starshine Swift, yoga and meditation instructor, will present stress reduction techniques. - Lynne Swift

## Health careers application deadlines

Application packets for the following programs are available in Admissions. Applications must be complete and submitted with required documentation by the following deadlines to be considered for fall 1994 admission. Note that the Associate Degree Nursing application is for fall 1995.

- Dental Hygiene Feb. 28
- Respiratory Care April 22
- Medical Office Assistant May 6
- Dental Assisting May 20
- Associate Degree Nursing April 8 (for fall 1995 admission)

## Financial Aid schedules student loan exit interviews

Federal regulations require that students receiving a Federal Stafford Loan or a Federal SLS Loan while attending Lane must attend an exit interview during their last term of attendance. The exit interview outlines financial planning, disclosure statements, repayment procedures, how to correspond with the lender, secondary markets, loan consolidation, options for making payments, and the consequences of default. The schedule of student loan winter term exit interviews follows. Sessions will begin on time and latecomers cannot be admitted. Each session will last approximately 50 minutes.

- |                           |         |            |                             |        |           |
|---------------------------|---------|------------|-----------------------------|--------|-----------|
| • <u>Monday, Feb. 28:</u> | 10 a.m. | Health 105 | • <u>Thursday, March 3:</u> | 9 a.m. | Forum 307 |
|                           | 2 p.m.  | Forum 307  |                             | 1 p.m. | Forum 309 |
|                           | 6 p.m.  | Forum 307  |                             | 4 p.m. | Forum 307 |

---

### ADS

"SITES AND SOUNDS OF GREECE," a slide-music-folk dancing presentation will take place Friday, Feb. 25, 6:30 p.m. at the EWEB training center, 4th Avenue., Eugene. ESL instructor Demetri Lontos will discuss Greek culture and focus especially on the Aegean Islands. Free; refreshments served. For more information, call Ext. 2253 or 345-0207.

MARCH WINDS TO BLOW up another Library book sale, Center Building second floor lobby, March 1-3. Donations of used books from home or office will be much appreciated. Let us know if you need help with pick-up. Call Ext. 2220. Thanks!

1992 SUBARU Loyale wagon, 4WD, excellent condition, maintenance records available, A/C, power locks & windows, AM/FM stereo, new tires, Mica Ruby, \$7,800. Ed Case, Purchasing Services, Ext. 2574.

GIRL SCOUT COOKIE TIME! Call now to order your Girl Scout cookies. We have the old favorites and a new caramel pecan one. Cookies will be delivered April 1. The cost is \$3 per box. Call Darlene Baker, Cont. Ed., Ext. 2909, or 747-0344.

WONDERFUL FAMILY RABBIT free to good home. Two-year-old female California rabbit, loves people, semi-housebroken, needs a good home. She comes complete with cage and accessories. Please leave message for Karen at 683-3752. (Karen Schwartzrock, Bus. Dept.)

ARE YOU ADVENTUROUS? Do you like to socialize with others in pursuit of outdoor activities? Do you have skill in an outdoor activity that you'd like to share with others? Check out LAFFS, Lane's Adventurous Faculty Fun Seekers. Some possible activities could include: Biking, hiking, walking, running, rafting, sailing, swimming, kayaking, snorkeling, water skiing, snow skiing, climbing, camping or whatever. If you are interested, please contact Lyndell Wilken, Ext. 2573, or Wes Chamberlain, Ext. 2271, in H&PE.

HOMELESS, 2 ADULTS, NO PETS--Well, soon as escrow closes, anyway. Looking for a two-month rental, house sit, caretake job, or ??? We need to move the last weekend of March and can't get into our new place until sometime in May. Joe Freeman, Co-op Ed., Ext. 2203, or home, 344-6468.

FOR SALE: Spring cometh. Bike paths beckoneth. Such a deal on a 1992 TREK 1420 extra-light sport-touring bicycle (62 cm., Shimano 105/Deore components). Rode it in '92 Cylce Oregon V. Great bike. \$930 when new. Best offer. Please contact Jerome Garger, E,FL&S, Ext. 2162, or 345-7175.

FOR SALE: SELMER CLARINET, Series 9, professional model, with case and extra mouthpiece. Good condition, nice tone. \$425 or best offer. Call me at home days, or after 9 p.m. evenings, at 345-5665. (Larry Cox, ABE/GED.)

FOR SALE: 16-1/2 ft. Terry camp trailer. Very clean. \$1,000 firm. Brenda Crume, BEC, Ext. 2936, or 461-7988.

**DEADLINE for The Daily** is 12-noon of the working day prior to publication on Mondays, Tuesdays, Wednesdays, and Thursdays. Submissions must be made in writing. E-Mail and 3-1/2" disks with WordPerfect or Word documents, IBM or Mac formats, encouraged. Include first and last name, department, and extension number. Ads will be run twice; for additional publication, resubmit or notify The Daily. Ads will not be repeated more than six times per term. Other items will be run once and repeated if space allows. Send submissions through intercampus mail to The Daily or deliver to the in-basket outside ADM 210.



# The Daily

Published for the staff of Lane Community College

747-4501, ext. 2591

Thursday, February 24, 1994

Week 8 of Winter Term

Edited by Joan Aschim

## Today and Friday:

- Faculty Council, today, 3-4:30 p.m., Boardroom.
- Secretary of State Phil Keisling, Friday, Feb. 25, 10 am. and 11 a.m., Boardroom.

## No Daily Monday

The Daily will not be published on Monday, Feb. 28.

## Tonight's winners will head for championships

The Titans men's basketball team hosts Chemeketa tonight in a one-game play-off at the **special time of 7 p.m.** in the main gym. Lane men finished the regular season in second place in their Northwest Athletic Association of Community Colleges conference. If they win tonight, they will advance to the NWAACC championships from March 3-5 at Big Bend Community College in Moses Lake, WA. Regular season passes do not apply to playoff games.

The Titan women placed third in their conference and are on the road tonight.

## Supplemental life insurance notice

Supplemental life insurance with Standard Insurance Company is available to classified and management employees and spouses from \$30,000 to \$300,000 in increments of \$10,000 with a \$30,000 initial purchase. Premium rates for each \$10,000 are based upon the employee's or spouse's age and are paid through payroll deduction. For details of enrollment, call Carol Goldsberry in Personnel Services at Ext. 2590.

## Faculty dance concert

Performing Arts dance faculty present "Openings" on Feb. 25 and 26 at 8 p.m. in the main theater. Modern, African and jazz dance will be featured. Choreographers include Lane instructors Mary Seereiter, Margo Van Ummerson and Kym Fleming, each of whom also will perform. Guest choreographer is Mary Oslund Van Liew of Portland and guest performers include the local troupe, Dance Africa. Tickets are \$6 adults, and \$4 students, senior citizens and children. For more information, call Ext. 2202 weekday afternoons.

## Lane students featured in minority talent roster

Lane has 12 students listed in the publication, "1994 Talent Roster of Outstanding Minority Transfer Students from Two-Year Colleges." Lane's students are the only Oregon community college students included in the roster. The roster is used by four-year schools to recruit students of color. It is published by the College Scholarship Service/College Board.

## Spring class schedule in the mail

Spring term class schedules will begin arriving in the mail this Saturday, Feb. 26, and should be in all homes by Wednesday, March 2. Schedules are being sent to departments and will be available in Admissions beginning Monday, Feb. 28. - Susan Sutton, Ext. 2593

## Secretary of state to visit class

Oregon Secretary of State Phil Keisling will speak to Steve Candee's American Government class on Friday, Feb. 25, at 10 a.m. and 11 a.m. in the Boardroom. His topics will include term limits and the use of the initiative process. Space is limited, but guests are welcome.

## Donations sought for student-parent couple

The Women's Center has a collection jar for donations to help with funeral costs for a child whose parents are students at Lane. For more information, contact Linda Wong in Study Skills at Ext. 2444.

*Lane Community College provides a quality learning experience in a caring environment.*



## Filing deadline approaching

Reminder: All precinct persons must file for reelection by March 8 with Lane County elections.

## Home and garden show features Continuing Education classes

The Lane County Home and Garden Show will be held at the Lane County Fair Grounds Convention Center, from March 10-13. The following Continuing Education classes will be offered during the show:

- Thursday, March 10, 7:30-9:30 p.m., A Quilt In A Day On A Serger: Overlock Sewing
- Friday March 11, 7:30-9 p.m., Marbleizing and Sponging Techniques With Oil- and/or Water-Based Paints, plus weekend exhibit
- Saturday, March 12
  - 11:30 a.m.-12:30 p.m., Chair Seat Caning
  - 12:30-1:30 p.m., Rug Braiding
  - 1:30-2:30 p.m., Upholstery
  - 2:30-4:30 p.m., Floral Design and Wedding Workshop, plus weekend exhibit
- Sunday, March 13
  - 12:30-1:30 p.m., Floral Design for the Budding Designer, plus weekend exhibit
  - 1:30-2:30 p.m., Woodshop, plus weekend exhibit
  - 2:30-4 p.m., Mexican Cooking, Chips and Salsa

## Oregon Chautauqua program request for proposals

The Oregon Council for the Humanities invites Oregon scholars to become part of one of the state's finest cultural programs and to bring the humanities to the people of Oregon. The Oregon Chautauqua gives humanities scholars and members of the general public an opportunity to discuss and explore the disciplines of the humanities and their relevance to everyday life. Sponsors of Chautauqua programs select programs from an annually produced catalog. Honoraria and travel expenses for their programs are paid by OCH. If you have a unique lecture or presentation which you feel might appeal to the residents of Oregon, OCH encourages you to apply. The 1994-95 catalog will be distributed and in effect for a 12-month period beginning September 1994. For more details or an application form, contact Dan Armstrong in English at Ext. 2424.

---

### ADS

FOR SALE: '87 Honda Accord LXi. 72,000 miles. Clean. Includes custom mounted studded tires. Asking \$6,900. Brenda Jennings, Bus. Dept., Ext. 2682 or 686-8595.

FREE: SIX FLAGS Magic Mountain VIP cards for 1994, available to all staff, located on the counter in front of ADM 211. The cards offer discounts to all Six Flags attractions.

FOR SALE: MOWER, Bolens 9000 rearbagger, self-propelled, 4 hp., recently tuned. See in diesel tech building or call Dave Roof, H&PE, Ext. 2263. \$90 or higher offer.

REFRIGERATOR/FREEZER FOR SALE: Kenmore 18 (top mount freezer), almond color, 5 years old, one owner. Performs perfectly and is in excellent condition. My new house came with a refrigerator, so this one is surplus. Asking \$300 OBO. Bob Boettcher, Science, Ext. 2446, or 683-4918 (home).

FOR SALE: ELECTRIC TYPEWRITER with carrying case (Facit-Swedish); excellent condition; \$50 OBO. Clif Trolin, Social Science, Ext. 2427, or 937-3607.

ARE YOU ADVENTUROUS? Do you like to socialize with others in pursuit of outdoor activities? Do you have skill in an outdoor activity that you'd like to share with others? Check out LAFFS, Lane's Adventurous Faculty Fun Seekers. Some possible activities could include: Biking, hiking, walking, running, rafting, sailing, swimming, kayaking, snorkeling, water skiing, snow skiing, climbing, camping or whatever. If you are interested, please contact Lyndell Wilken, Ext. 2573, or Wes Chamberlain, Ext. 2271, in H&PE.

"SITES AND SOUNDS OF GREECE," a slide-music-folk dancing presentation will take place Friday, Feb. 25, 6:30 p.m. at the EWEB training center, 4th Avenue., Eugene. ESL instructor Demetri Lontos will discuss Greek culture and focus especially on the Aegean Islands. Free; refreshments served. For more information, call Ext. 2253 or 345-0207.

MARCH WINDS TO BLOW up another Library book sale, Center Building second floor lobby, March 1-3. Donations of used books from home or office will be much appreciated. Let us know if you need help with pick-up. Call Ext. 2220. Thanks!

1992 SUBARU Loyale wagon, 4WD, excellent condition, maintenance records available, A/C, power locks & windows, AM/FM stereo, new tires, Mica Ruby, \$7,800. Ed Case, Purchasing Services, Ext. 2574.

GIRL SCOUT COOKIE TIME! Call now to order your Girl Scout cookies. We have the old favorites and a new caramel pecan one. Cookies will be delivered April 1. The cost is \$3 per box. Call Darlene Baker, Cont. Ed., Ext. 2909, or 747-0344.

**DEADLINE for The Daily** is 12-noon of the working day prior to publication on Mondays, Tuesdays, Wednesdays, and Thursdays. Submissions must be made in writing. E-Mail and 3-1/2" disks with WordPerfect or Word documents, IBM or Mac formats, encouraged. Include first and last name, department, and extension number. Ads will be run twice; for additional publication, resubmit or notify The Daily. Ads will not be repeated more than six times per term. Other items will be run once and repeated if space allows. Send submissions through intercampus mail to The Daily or deliver to the in-basket outside ADM 210.