

The Daily

Published for the staff of Lane Community College

747-4501, ext. 2591

Tuesday, November 1, 1994

Edited by Angela Miller

Today & Wednesday:

- College Council, today, 1:30-3:30 p.m., Boardroom.
- Greg Holly, professional graphic artist will speak today, 1 p.m., in the gallery.
- Fred McDonnal, PERS director, to speak today, 2 p.m. and at 3 p.m., FOR 308.
- Used book sale, today-Thursday, Nov. 1-3, 10 a.m.-2 p.m., 2nd floor lobby CEN. Paperbound books are \$.50 and hardbound books are \$1.
- Instructional Services Council, Wednesday, Nov. 2, 1:30-3 p.m., Boardroom.
- Science instructor Terri Herbert, Instructor of the Year for 1993-94, will speak on Wednesday, Nov. 2, at 4:30 p.m. in APR 214.

Printing/Graphic deadline reminder

Instructional packets and books needed for winter term classes should be submitted to Printing/Graphics by Monday, Nov. 21. Materials needed for the first day of winter term should be submitted by Dec. 12. Thanks for your cooperation. - Printing/Graphics

PERS director to speak

Fred McDonnal, PERS director, will speak at Lane **today** at 2 p.m. and again at 3 p.m. in FOR 308 regarding the PERS initiative. Current PERS members and those who may become members are encouraged to attend.

Special ticket price for "Wings"

A special ticket price for Lane faculty, staff and guests of \$6 each is being offered for the production of "Wings," a play written by Arthur Kopit. "Wings" is a story of a stroke victim's struggle to survive and find meaning. Performances are scheduled for November 4, 5, 11, 12, 18, and 19 at 8 p.m. For tickets, call the Box Office from 12-4 p.m. at Ext. 2202.

Road closure

Eldon Schafer Drive, the east entrance to main campus, will be closed on Saturday, Nov. 5, from 9 a.m.-3 p.m., for the OSAA High School State Cross Country meet. Gonyea Road, the west entrance, will remain open, but ticket sales will be held at that site. If you are working or attending class, notify the ticket seller at the entrance. Thanks for your patience and cooperation. - Athletic Department

Lane's athletic department honored

Lane's athletic Department was honored October 17 in Portland by the Oregon Schools Athletic Association. An award was given in recognition of 25 years of service to the community for hosting the Cross Country Championships. The award is on display in PE 205. The 25th Annual Cross Country Meet will be held at Lane Saturday, Nov. 5.

Free videoconference addresses racism

A free videoconference, "Teaching About Racism: Tools and Strategies", will be offered Friday, Nov. 4, from 10 a.m.-12 p.m. in CEN 10. Because we live in an increasingly diverse society, many observers contend that if we are to remain a society which respects diversity and honors democracy, serious attention must be given to helping young people overcome the influence of racism. This live videoconference will present a variety of highly acclaimed approaches that are being used in American schools today and provide a forum for the exchange of ideas and resources among educators. All interested staff are invited to attend. For more information, contact Cynde Leathers, Ext. 2260.

Reception for Debbie Powers

A farewell reception for Debbie Powers will be held Friday, Nov. 4, 3-5 p.m. in PE 205.

Free workshop to be held for women

Lane will hold a free trades and technical careers workshop for women, "Tools of the Trade," on Saturday, Nov. 5, from 9 a.m.-4 p.m. in IND 101. Participants will be able to try out a variety of tools, learn about safety and operation, and find out about technical and trades careers. For more information, call the Women's Center, Ext. 2353.

Marketing applications due

Marketing grant deadlines for this year are Nov. 8, Jan. 19 and April 20. Money awarded in April will be available July 1, 1995. Grants are available to help departments and other college units promote their programs. To receive an application and guidelines, call Ext. 2268.

Leadership institute for women accepting applications

The American Association of Women in Community Colleges is accepting applications for the 1995 National Institute of Leadership Development. Applications are available from Carol Beckley, ADM 202, and are due Nov. 9. For more information, call Beckley at Ext. 2363.

Humor wanted

In celebration of Lane's 30th anniversary, *The Torch* staff wants to print a weekly feature of amusing stories about things that have happened at Lane over the past 30 years. Interested faculty and staff can send their humorous stories to *The Torch* through intercampus mail. Current stories are also welcome. For more information, contact Mary Klacsan at Ext. 2014.

ADS

TICKETS TO TIPLER. The next speaker in the Science, Technology, and Society series is Dr. Frank Tipler. He will be speaking in Portland at the Arlene Schnitzer Concert Hall on Friday, Nov. 4 at 7:30 p.m. His subject is "The Physics of Immortality," billed as a modern cosmology, a fusion of science and religion. A block of tickets, at \$14 each, will be available to Lane staff and students, at the back counter in the bookstore. More questions? Contact Ingrid Gram, Soc. Sci., Ext. 2846/2427.

REDECORATING? FOR SALE: Scandinavian rya rug, 4'x5', rich fall colors: brown, gold, orange, \$80. Also handloomed, textured bedspread/throw, 4 1/2'x7 1/2', rust-gold tones, \$40. Ingrid Gram, Soc. Sci., Ext. 2846/2427.

FOR SALE: Nice mountain bike, 18" frame, \$350. ALSO, 1993 FORD F150 PICK-UP short-wide, 300/6, 5 speed, dual gas tanks, Delta tool box, extra rims with studded snow tires and towel package, \$13,500. Jason Woodruff, Flight Tech., 689-2021 or 485-1721.

LEATHER JACKET: Beautifully styled woman's black leather jacket with zip-out thinsulate lining. Perfect condition. Size large. Asking \$90. Call Wendy Rawlinson, Math, 342-5736.

SPRING BREAK to Australia and New Zealand 15 days E.F. Education tour, departing Mar. 14; \$2,165 fee includes fully guided tour, round trip airfare from Portland, superior hotels, continental breakfast and dinner daily. Escorted by Kathy Hoy, Lane art instructor. Apply by Dec. 14. Please call 343-7819. Kathy Hoy, Cont. Ed.

HEY! Your Tupperware lady is a guy. Call James Tims for a party or if you need some Tupperware at 688-8582. Liz Coleman, ABSE, Ext. 2919.

FOR SALE: Lovely handmade wooden rocking cradle with mattress and 2 sheets and painted in pastel colors, \$55; baby bath with insert, \$10; tot tenders front carrier pack, \$30; infant carseat, \$10; and bags and bags of baby clothes. Call Liz Coleman, ABSE, Ext. 2919 or 683-4384.

FOR SALE: 1984 Honda Civic Hatchback. Economical, reliable transportation. Good tires, 4-speed, AM/FM cassette, approx. 73,000 drive-train miles. All maintenance records. \$3,195. Mike Hopkinson, MA&T, Ext. 2479; or Kit Hopkinson, F&HC, Ext. 2623. Home 345-7717.

The Daily

CONTACTS: Editor: Joan Aschim, Ext. 2591. Assistant Editor: Angela Miller, Ext. 2268.

SCHEDULE: The Daily publishes Mondays, Tuesdays, Wednesdays, and Thursdays during fall, winter and spring terms, except Tuesdays only during term breaks; and Tuesdays only during summer.

SUBMISSIONS: Include first and last name, department, and extension number. Submit Mac or IBM 3-1/2" disks, any program, when possible. Send via intercampus mail; deliver to the in-basket outside ADM 210; E-Mail to Joan Aschim; Internet to aschim@edlane.lane.edu; fax to 744-3970; or mail to The Daily, Lane Community College, 4000 E. 30th Ave., Eugene, OR 97405.

DEADLINE: Noon of the day prior to publication. Next-day placement is attempted but cannot be guaranteed. All items will be run once and repeated if space permits. Priority will be given to new items. Ads will be run twice; for repeat placement, notify The Daily; observe six times per term limit. All items subject to editing for brevity and Associated Press style.

The Daily

Published for the staff of Lane Community College

747-4501, ext. 2591

Wednesday, November 2, 1994

Edited by Joan Aschim

Today

- Used book sale, today through Thursday, 10 a.m.-2 p.m., Center Building second floor lobby. Paperbacks \$.50; hardbound \$1.
- Instructional Services Council, today, 1:30-3 p.m., Boardroom.
- Discussion with Terri Herbert, 1993-94 Instructor of the Year, 4:30 p.m., APR 214.

Date changes

- The Legislative Action Team will meet Nov. 10, not Nov. 3, at 7:30 a.m., in PE 205.
- Debbie Powers' farewell reception will begin at 3:30 p.m., not 3 p.m., on Nov. 4, in PE 205.

Trades and technical careers workshop for women

A free workshop for women, "Tools of the Trade," on Saturday, Nov. 5, from 9 a.m. to 4 p.m. in IT 101. Participants will be able to try out a variety of tools, learn about safety and operation, and find out about technical and trades careers. For more information call the Women's Center at Ext. 2353.

Radiothon results

KLCC's fall radiothon brought in \$125,200 for the station. Over half of KLCC's budget comes from listener and local business support. The two spontaneous, high energy tap dancing performances by Old Queen Bananita Sluginsky, the 1993 Eugene Celebration Slug Queen, aka Sarah LaMaster, grants coordinator, Institutional Advancement, raised \$100 a minute.

Judy Bender Bachman earns state teaching award



Judy Bender Bachman, business office administration instructor at LCC at Cottage Grove, was named 1994 Teacher of the Year by the Oregon Professional Technical Development Association on Oct. 14.

"Her selection was not a surprise to those of us who know her well," said Karen Duckworth of the Oregon Department of Education Office of Professional Technical Education. "She is a highly respected, special lady with a big heart and a genuine concern for all students."

LCC at Cottage Grove Director Don Strahan says Bender Bachman consistently receives high marks from students, employers and colleagues. Her projects have included working with Cottage Grove High School to develop education reform programs that help students "seamlessly" go on to college from

high school.

LCC graduate Sharon Kofoid was one of the nominators. She said, "It was two-and-a-half years ago when I walked into the Cottage Grove branch of LCC. A shutdown forced me to seek a new profession after more than 25 years. With little to no idea of what I wanted to do or could do, it was my good fortune to meet Judy Bachman. Since that time she has been my instructor in 12 classes and an enormous support in my pursuit of a degree in business administration. ... Judy wins my support for this award hands down."

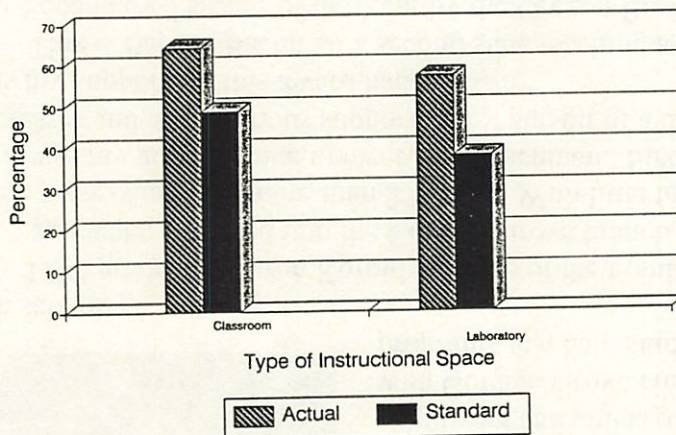
This is Bender Bachman's second state teaching award in as many years. She was named Post-Secondary Teacher of the Year by the Oregon Business Education Association in 1993.

"Workforce 2000" brochures available

The "Workforce 2000" conference sponsored by the League for Innovation will be held Feb. 8-11, 1995, in San Diego. For a conference brochure, call Ext. 2120.

KEY BENCHMARKS

Weekly Student Station Hours Actual versus Standard Optimal Use



- ☒ Data indicate a serious need for additional classroom and laboratory space.
- ☒ The mix of classroom sizes and configurations needs to be addressed also.

SOURCE: Campus Services
Research and Planning
July 28, 1994

Faculty guides wanted

We aren't lost, but we want to light the path! The state Office of Community College Services has awarded Lane a grant to increase staff awareness of educational reform. Training needs will be assessed and learning activities will occur in all six of the CAM strands represented by our cluster areas here at Lane. Guides will receive pay for one release class for fall and will receive one class release for each of winter and spring terms. We want to begin work by mid-November. Please call me for more information. - Judith Gabriel, Ext. 2699

Volunteers needed

We are losing our student workers and need help to help keep the No Cash Clothing Stash open for students. If you can volunteer a few hours a week, contact Jim Dieringer at Ext. 2850 in Campus Ministry for more information.

Leadership institute for women accepting applications

Applications for the American Association of Women in Community Colleges 1995 National Institute of Leadership Development are due Nov. 9. The institute is for women interested in leadership roles at any level in higher education. For complete application materials, contact Carol Beckley, ADM 202, Ext. 2631.

THANKS DITTO

We are unanimous with Pat Williams recent thank-you to Campus Services custodial staff. Thanks for such attention to our spaces! - Child Care Co-op

ADS

LADIES GOLF CLUBS: 1, 3, 5 Wilson woods with head covers. 3 through pitching wedge USA "Lady Unique" irons (cavity back). All clubs have new Blue Chamois "Classic Cushion" grips. \$125 includes bag! Sydney Wilson, F&HC, Ext. 2617.

THE WINNER OF THE SONY WALKMAN in the Bookstore's drawing on Monday was Donna Oakes. Thanks to everyone for participating. It's not too late to be a winner. We will be giving away a GE AM/FM clock radio on Tuesday, Nov. 22, at 2 p.m. Sign up now, one entry per person per day.

WANTED: OFFICE SPACE in downtown Eugene for 2 counselors. We need a minimum of 2 rooms. \$500/month max. rent. Prefer quaint older home. Possible to share space. Diane Rogers, Social Science. Call 484-6979.

I NEED LEAVES for our mudfield yard. Any but oak and walnut accepted. You deliver or will pick up if close in. Kay Gidley, Athletics, Ext. 2555, or 345-3706.

1-BEDROOM HOUSE for short term rent, Dec. 1-March 31. \$250 furnished, close to UO/town. Kay Gidley, Athletics, Ext. 2555, or 345-3706.

SPRING BREAK to Australia and New Zealand, 15 days EF education tour, departing March 14. \$2,165 fee includes fully guided tour, round trip airfare from Portland, superior hotels, continental breakfasts and dinner daily. Escorted by Kathy Hoy, Lane art instructor. Apply by Dec. 14. Call 343-7819. (Kathy Hoy, Continuing Ed.)

THE DAILY

CONTACTS: Editor: Joan Aschim, Ext. 2591. Assistant Editor: Angela Miller, Ext. 2268.

SCHEDULE: The Daily publishes Mondays, Tuesdays, Wednesdays, and Thursdays during fall, winter and spring terms, except Tuesdays only during term breaks; and Tuesdays only during summer.

SUBMISSIONS: Include first and last name, department, and extension number. Submit Mac or IBM 3-1/2" disks, any program, when possible. Send via intercampus mail; deliver to the in-basket outside ADM 210; E-Mail to Joan Aschim; Internet to aschim@edlane.lane.edu; fax to 744-3970; or mail to The Daily, Lane Community College, 4000 E. 30th Ave., Eugene, OR 97405.

DEADLINE: Noon of the day prior to publication. Next-day placement is attempted but cannot be guaranteed. All items will be run once and repeated if space permits. Priority will be given to new items. Ads will be run twice; for repeat placement, notify The Daily; observe six times per term limit. All items subject to editing for brevity and Associated Press style.

The Daily

Published for the staff of Lane Community College

747-4501, ext. 2591

Thursday, November 3, 1994

Edited by Joan Aschim

Today through Saturday

- Library used book sale, last day is today, Center Bldg. second floor lobby, 10 a.m.-2 p.m.
- "Teaching About Racism" teleconference, Friday, Nov. 4, 10 a.m.-noon, CEN 10.
- Debbie Powers' farewell reception, Friday, Nov. 4, 3:30 p.m., PE 205.
- "Tools of the Trade" workshop, Saturday, Nov. 5, 9 a.m.-4 p.m., IT 101.
- OSAA Cross Country meet, Saturday, Nov. 5, 9 a.m.-3 p.m., Eldon Schafer Drive closed.

Elected

President Jerry Moskus has been elected chair of the Southern Willamette Research Corridor for a one-year term.

shared decision-making news

College Council report

Recommended construction bond projects will be presented next week to the Board of Education for discussion or action, College Council learned at its Nov. 1 meeting. Earlier this fall, the board decided not to place a bond issue on the Nov. 8 ballot but vowed to try it later. The list of projects is an update of an earlier list developed from Facilities Management Committee lists, the accreditation self-study, College Council review, and other documentation and feedback. The price tag is \$39.9 million.

Student housing funds should be dispersed as rent stipends, most council members agreed in a discussion of a \$1.9 million five-year settlement coming to Lane. The settlement results from a suit on behalf of Lane and four other colleges by the state attorney general's office against contractors who used low-cost federal loans to build student housing. The contractors reneged on an agreement to turn the housing over to the colleges and instead sold the housing for profit. Lane must submit a proposal on how the funds will be used to the attorney general and receive approval before funds will be released. It will be three to five years before funds are available to students.

Council will meet again on Tuesday, Nov. 15, from 1:30-3 p.m. in the Boardroom, to finish the discussion of student housing, and to discuss education reform.

Dislocated Worker Program extends services

The Dislocated Worker Program, traditionally serving displaced timber workers, now has \$942,000 to retrain people laid off from jobs in other declining industries or who are long-term unemployed. The program provides career life planning, job search assistance, computer classes, and training. Anyone interested in applying may pick up an application from the Dislocated Worker Program office in Apprenticeship Annex. The program is funded by the Job Training Partnership Act and is a partnership of LCC, SWPIC, and the Oregon Employment Division.

Insurance notice to classified and management employees

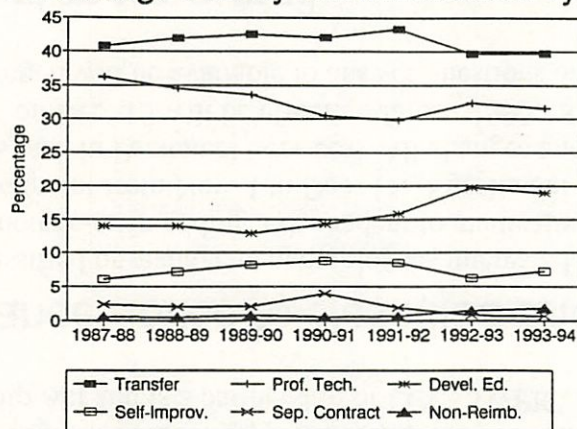
Classified or management employees interested in changing from one medical insurance plan to another—or in adding a dependent to medical/vision or dental coverage—may do so during open enrollment from Nov. 1 to Dec. 15. Enrollment forms and rate charts may be picked up at the forms rack in Personnel Services. All changes and additions received by Carol Goldsberry by 5 p.m. on Dec. 15 will be effective Jan. 1, 1995. Reps from Blue Cross/Blue Shield and HMO Oregon will be available to answer questions on Dec. 6 from 1-4 p.m. in PE 205.

And yet more e-mail

The Network Task Force Software Committee has scheduled a demonstration of another e-mail package, "cc:Mail" by Lotus, on Tuesday, Nov. 8, from 3-5 p.m. in FOR 307. Interested parties are strongly encouraged to attend. - Anne Bacon, Ext. 2065

KEY BENCHMARKS

Percentage FTE by Reimbursement Type



- ✓ After decreases in the late 1980s, the percentage share of professional technical FTE increased 1992 through 1994. Transfer offerings produce the largest share of FTE.
- ✓ The changes in transfer and developmental education FTE in 1992-93 are due to re-coding some mathematics courses into developmental education.

Prepared by Research and Development, Sept. 9, 1994

Meetings

- College Council Part-time/Full-time Committee, Monday, Nov. 7, 8:45-10 a.m., Boardroom. Agenda topics: Instructional Services survey of departments on policies and practices related to part-time instructors, concerns raised in the fall inservice forum for part-timers, discussion of recommendations, and committee goals.
- Cooperative Learning Inquiry Group, Tuesday, Nov. 8, 2:30-3:30 p.m., H&PE 209. Share what you've been doing and help plan a winter workshop. For more

information, contact Maxine Frauman at Ext. 2253 or Shelly Gaudia at Ext. 2051

- Board of Education, Wednesday, Nov. 9, 6:30 p.m., Boardroom. Agenda highlights: election results discussion, construction bond issue discussion/action, student records release policy action, Wildish Building lease action.

ADS

DO YOU WANT something sweet, cuddly and entertaining? I have three 10-week-old adorable kittens: black with white paws, striped black and white, and deep gray. I will bring to your home. Call Kerin Hoag, Child Care Resource Connection, Ext. 2132, or home 345-9197.

MASSAGE THERAPY: Affordable healing massage combining Swedish massage, acupressure, hydrotherapy, myofascial release, deep tissue work and polarity therapy. Sculptured to fit your individual needs. Please call 683-4816 for appointment. Lisa Burtraw, LMT (ABSE).

ATTENTION, WOMEN: Lisa Burtraw, LMT is devoting time on Thursdays to assist women in their healing journey by offering complimentary massage through Sexual Assault Support Services. Please call 683-4816 for appointment. Lisa Burtraw, ABSE.

QUILTMaking, SEWING SUPPLIES NEEDED! My daughter's class is creating a quilt to raffle (a fundraiser). Please call Leslie Opp-Beckman at 343-5421 (home) or Ext. 2253 (ABSE) if you can donate any of the following: fabric, prefer cotton, any size; thread, buttons, trims, needles, pins, thimbles or batting.

BAKE SALE AND TUPPERWARE! The ASLCC Child Care Co-op will hold a delightfully delicious bake sale, as well as a Tupperware Small World party, on Monday, Nov. 14, from 11 a.m. to 1 p.m. in the Center Bldg. second floor lobby. Both

events are co-op fundraisers. Holidays are just around the corner, so order now! Questions? Call Sue Ferguson at Ext. 2025.

TO ALL LCC WOMEN AND AAWCC MEMBERS: Merrymaking will abound after work on Monday, Nov. 14, at the AAWCC Third Annual Holiday Auction. Eat delicious hors d'oeuvres while you bid on a chocolate cheesecake, jewelry, pottery, floral wreaths, massage certificates and more. Fifty percent of the profits will be donated to the Campus Ministry. Festivities begin at 5:30 p.m. at Judith Watt's house. RSVP Judith, Ext. 2876, or Lynne Swift, Ext. 2503 (T&D).

LADIES GOLF CLUBS: 1, 3, 5 Wilson woods with head covers. 3 through pitching wedge USA "Lady Unique" irons (cavity back). All clubs have new Blue Chamois "Classic Cushion" grips. \$125 includes bag! Sydney Wilson, F&HC, Ext. 2617.

WANTED: OFFICE SPACE in downtown Eugene for 2 counselors. We need a minimum of 2 rooms. \$500/month max. rent. Prefer quaint older home. Possible to share space. Diane Rogers, Social Science. Call 484-6979.

NEED LEAVES for mudfield yard. Any but oak and walnut okay. You deliver or will pick up if close in. Kay Gidley, Athletics, Ext. 2555, or 345-3706.

1-BEDROOM HOUSE for short term rent, Dec. 1 to March 31. \$250 furnished, close to UO/town. Kay Gidley, Athletics, Ext. 2555, or 345-3706.

THE DAILY

STAFF: Editor is Joan Aschim, Ext. 2591. Assistant Editor is Angela Miller, Ext. 2268.

SCHEDULE: The Daily publishes Mondays, Tuesdays, Wednesdays, and Thursdays during fall, winter and spring terms, except Tuesdays only during term breaks; and Tuesdays only during summer.

SUBMISSIONS: Include first and last name, department, and extension number. Submit Mac or IBM 3-1/2" disks, any program, when possible. Send via intercampus mail; deliver to the in-basket outside ADM 210; E-Mail to Joan Aschim; Internet to aschim@edlane.lane.edu; fax to 744-3970; or mail to The Daily, Lane Community College, 4000 E. 30th Ave., Eugene, OR 97405.

DEADLINE: Noon of the day prior to publication. Next-day placement is attempted but cannot be guaranteed. All items will be run once and repeated if space permits. Priority will be given to new items. Ads will be run twice; for repeat placement, notify The Daily; observe six times per term limit. All items subject to editing for brevity and Associated Press style.

The Daily

Published for the staff of Lane Community College

747-4501, ext. 2591

Monday, November 7, 1994

Edited by Joan Aschim

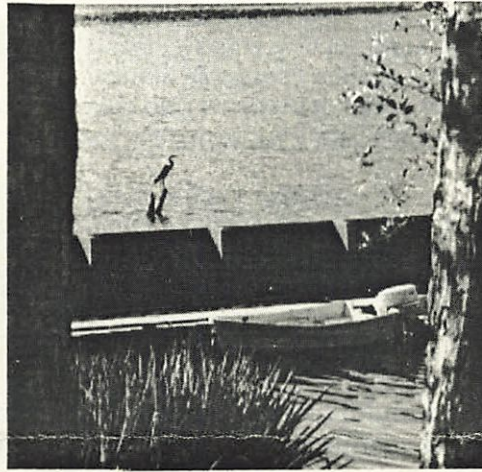
This week

- Vote! Tuesday, Nov. 8.
- E-mail demo: "cc:Mail" by Lotus, Tuesday, Nov. 8, 3-5 p.m., FOR 307.
- Cooperative Learning Inquiry Group, Tuesday, Nov. 8, 2:30-3:30 p.m., H&PE 209.
- Board of Education, Wednesday, Nov. 9, 6:30 p.m., Boardroom.
- Classified Council, Wednesday, Nov. 9, 3-5 p.m., PE 205.
- Legislative Action Team, Thursday, Nov. 10, 7:30-9 a.m., Boardroom.
- Faculty Council, Thursday, Nov. 10, 3-4:30 p.m., Boardroom.

Siltcoos renovations increase comforts, preserve solitude



Mike Maze describes landscaping plans.



A resident heron.

Guests claim the breeze on the lake is from heron's wings. They say 24 species of fish live in its quiet waters and only a handful of homes dot the shoreline. Twice a day, the train rumbles by. Welcome to Siltcoos Station, a one-time whistle-stop and fishing resort now serving

as a retreat center where only the invited will find you. Located about 10 miles inland of Florence on Canary Road, the Station is owned by Lane. There are four cabins and a boathouse, all renovated this summer. The cabins have ample hot water, modern bunks with twin-size tops and full-size futon bottoms, baseboard heat, and fully equipped kitchens. One cabin is wheelchair accessible and another has a small meeting room. Guests provide their own food and bedding.

The boathouse is the main group meeting area. It has a TV/VCR unit, chalkboards, tables and chairs, a wonderful over-the-water view and a small dock. Outside, blackberries have been replaced with grass and ivy. There are no phones on the premises except in caretaker Lina Tanner's house.

Rates for outside groups are \$10 per person per day with a \$100 minimum. Maximum occupancy is 26 people. Use is limited to one group at a time. Discounts are available to Lane staff; call LCC at Florence at Ext. 2090 for details and reservations. (*Photos by John Bauguess*)

Daniel Quinn visits Lane this week

Author, philosopher, futurist, and poet Daniel Quinn will speak to Jerome Garger's Peace and Conflict Studies class on Thursday, Nov. 10, from 11:30 a.m.-12:50 p.m., and to the public from 7-9 p.m., both in FOR 308. Faculty and staff are welcome at both events.

Author of *Ishmael*, Quinn won the \$500,000 Turner Tomorrow Fellowship in 1991. The fellowship encourages authors to seek creative and positive solutions to global problems. *Ishmael* is "designed to give people a new way of understanding our presence on this planet," says Quinn. The book is available in the Bookstore and on reserve in the Library. Quinn also wrote *Providence: The Story of a Fifty Year Vision Quest*, an account of his own spiritual voyage and a look at animism.

Success conference proposals wanted

Here's to success! It's time once again to demonstrate our successes at Lane at the 10th Annual Student Success Strategies Conference in Portland from Feb. 1-3, 1995. Proposals are due no later than Nov. 15 and should be sent directly to Connie Green at Chemeketa Community College. The conference will feature Dr. William Bridges as the keynote speaker. For more information and proposal forms, contact Sue Ferguson at Ext. 2025 or Miriam Thompson at Ext. 2315.

Kinetic sculptures by Raymond Bareiss may cause vertigo

Kinetic sculptures by Raymond Bareiss on display in the Art Department Gallery today through Dec. 2 will challenge the observer's sense of plumb. "From most viewpoints, the sculptures in this exhibition will appear to lean," says the artist. "However, when viewed directly from the front, rear, left, or right sides, they will seem perfectly vertical. This makes it hard to determine whether they are leaning or not." He says the sculptures actually are vertical. Bareiss will lecture on Wednesday, Nov. 16, at 1 p.m. in the gallery, followed by a reception.

Bareiss won the "Best of What's New" award from *Popular Science* magazine in 1991 for a sculpture that appeared to defy the laws of physics. The magazine now uses Bareiss' sculptures as its award trophies. The artist has designed perfume bottles for Coty and has shown at the San Francisco Exploratorium, the Massachusetts Institute of Technology and at galleries in nationwide.

Gallery hours are 8 a.m. to 10 p.m. Mondays through Thursdays and 8 a.m. to 5 p.m. Fridays. Admission is free. For more information, call Ext. 2409.

New grants manual and writer's workbook available

If you are developing a grant proposal or thinking about seeking funding, be sure to get the updated Grants Manual and Grant Writer's Workbook from Institutional Advancement. The booklets explain grant development, grant writing, and college grants procedures and timelines. Some tips:

- When you first decide to seek funding—read the Grants Manual and Section A-8c of the BOM, then complete and circulate Grant Review Form, Part A, Preliminary Approval.
- As early as possible—develop draft of proposal. The Grant Writer's Workbook is a good guide.
- At least **10** days prior to mailing—provide drafts to Financial Services and Institutional Advancement for review.
- At least **5** days prior to mailing—circulate one copy of final proposal and one copy of funding source guidelines and Parts A and B of college form to people on list for sign-off.
- At least **3** days prior to mailing—see that final proposal has reached President's Office for signature.

The timeline ensures that your proposal will be carefully considered. Adhering to the timeline increases your chances of developing a high quality proposal with strong institutional support. For more information, contact Sarah LaMaster, Grants Coordinator, Ext. 2312.

Faculty evaluation questionnaire tips

When students complete the "Faculty Evaluation by Students" questionnaire, remind them that if a question does not apply, they should leave it blank. Also remind them to turn the page for the written questions. - Beth Naylor, Ext. 2533

ADS

HIKING SHOES: Vasque low top, women's size 7-1/2 medium, very good condition, used only four weeks, sadly too large for me, originally \$65, will sell for \$35. Judy Scher, Cmptr. Svcs., Ext. 2231; home, 344-2114.

THANKSGIVING DRAWING at the Bookstore, Nov. 22, 2 p.m. Enter now to win a GE clock radio. One entry per person per day.

FOR SALE: '92 HONDA ACCORD LX. Perfect condition inside and out. Only 21,000 miles. Beautiful cobalt blue exterior. Power everything with cruise and tilt. Includes entire service history. Asking \$16,390 (Selco quote). Extras: nose mask, floor mats, full warranty to 8/98. Contact Jody Larson, Math, Ext. 2017, or 689-6025.

DO YOU WANT something sweet, cuddly and entertaining? I have three 10-week-old adorable kittens: black with white paws, striped black and white, and deep gray. I will bring to your home. Call Kerin Hoag, CCRC, Ext. 2132, or home 345-9197.

MASSAGE THERAPY: Affordable healing massage combining Swedish massage, acupuncture,

hydrotherapy, myofacial release, deep tissue work and polarity therapy. Sculptured to fit your individual needs. Please call 683-4816 for appointment. Lisa Burtraw, LMT (ABSE).

ATTENTION, WOMEN: Lisa Burtraw, LMT is devoting time on Thursdays to assist women in their healing journey by offering complimentary massage through Sexual Assault Support Services. Please call 683-4816 for appointment. Lisa Burtraw, ABSE.

QUILTMaking, SEWING SUPPLIES NEEDED! My daughter's class is creating a quilt to raffle. Please call Leslie Opp-Beckman at 343-5421 (home) or Ext. 2253 (ABSE) if you can donate any of the following: fabric, prefer cotton, any size; thread, buttons, trims, needles, pins, thimbles or batting.

BAKE SALE AND TUPPERWARE! The ASLCC Child Care Co-op will hold a delightfully delicious bake sale and Tupperware Small World party, on Monday, Nov. 14, from 11 a.m. to 1 p.m. in the Center Bldg. second floor lobby. Both events are co-op fundraisers. Questions? Call Sue Ferguson at Ext. 2025.

THE DAILY

STAFF: Editor is Joan Aschim, Ext. 2591. Assistant Editor is Angela Miller, Ext. 2268.

SCHEDULE: The Daily publishes Mondays, Tuesdays, Wednesdays, and Thursdays during fall, winter and spring terms, except Tuesdays only during term breaks; and Tuesdays only during summer.

SUBMISSIONS: Include first and last name, department, and extension number. Submit Mac or IBM 3-1/2" disks, any program, when possible. Send via intercampus mail; deliver to the in-basket outside ADM 210; E-Mail to Joan Aschim; Internet to aschim@edlane.lane.edu; fax to 744-3970; or mail to The Daily, Lane Community College, 4000 E. 30th Ave., Eugene, OR 97405.

DEADLINE: Noon of the day prior to publication. Next-day placement is attempted but cannot be guaranteed. All items will be run once and repeated if space permits. Priority will be given to new items. Ads will be run twice; for repeat placement, notify The Daily; observe six times per term limit. All items subject to editing for brevity and Associated Press style.

Questions and Answers Regarding Snow Closures

Staff and faculty are encouraged to share this information with students:

Q. How do we know for sure that the college is closed?

A. When the decision is made to close the college, the college immediately notifies KLCC, 89.7 FM, and other local radio and television stations. These stations make announcements as soon as they receive information. Please listen or watch. Do not call them. This interferes with their ability to bring you the most current information.

Snow closures or delays can be announced at any time as conditions worsen; however, every effort is made to report early morning closure/delay information by 6 a.m., and evening closure information by 3 p.m. Evening classes are classes that begin at or after 5 p.m.

Because conditions can improve during the day, sometimes the college will close during the day and reopen for evening classes, so it is important to stay tuned to the media.

Q. If the college is closed, should staff report for work?

A. When the college or a college center is closed, classes and activities at the facility are canceled and staff who work there should not report for work or come to the work site, unless they receive specific instructions from their supervisor or the media. If one or more facilities are closed and others are open, staff who work at the open facilities should report to work as usual.

Q. What do delays mean?

A. If opening of the college is delayed until a certain time, all classes and other activities scheduled to begin before that time are canceled for the day. For example, if the college will open at 10 a.m., all classes that start before 10 a.m. are canceled, even if the class is scheduled to continue past 10.

Q. How can people with hearing impairments learn of closures?

A. All local television stations provide closed caption service during their news casts and will run crawlers (visual displays) when possible.

Q. Are there transportation alternatives?

A. When 30th Avenue seems icy, some people choose to come from the east via Franklin, or to ride the bus. In general, LTD operates buses to Lane when the college is open; however, the drivers may choose alternate routes.

Q. Will staff get paid?

A. Business Operations Manual policy states that:

When the college is officially closed, all bargaining unit members, part-time credit instructors, and management employees scheduled to work will be paid as if they worked.

If you are required to work during a closure, you are entitled to time off with pay on a straight-time basis.

If you have scheduled leave on a closure day, your leave account will be charged as originally scheduled.

Hourly employees are paid only for hours actually worked.

If the college officially closes after work has started, eligible employees receive leave with pay for the remainder of the work day.

If you are scheduled to report to work before a closure is announced, but have not reported at the time of announcement, you may take personal leave, vacation leave, compensatory time, or leave without pay for hours not worked before the closure, as approved by your supervisor.

If you choose to come to work late or leave early because of bad weather, you may take personal leave, vacation leave, compensatory time, or leave without pay, as approved by your supervisor.

If you choose to work all or part of your schedule during an official closure, you receive no additional pay or time off.

Questions? Consult Personnel Services or the BOM, section P-27, page 426.1, "School Closure Pay."

The Daily

Published for the staff of Lane Community College

747-4501, ext. 2591

Tuesday, November 8, 1994

Edited by Joan Aschim

Today

- Vote!
- E-mail demo: "cc:Mail" by Lotus, 3-5 p.m., FOR 307.
- Cooperative Learning Inquiry Group, 2:30-3:30 p.m., H&PE 209.

Board agenda

The Board of Education will meet on Wednesday, Nov. 9, at 6:30 p.m. in the Boardroom. Agenda highlights:

- facilities and equipment needs for bond issue
- election results discussion
- board policy on release of student records
- report on affirmative action and diversity at Lane
- report on collegewide network
- Budget Committee appointments
- lease of Wildish Building

Holiday!

Lane will be closed on Friday, Nov. 11, for the Veteran's Day holiday.

TTT discussion will focus on the Internet

Teachers Talking about Teaching will meet on Tuesday, Nov. 15, from 3-4:30 p.m., in CEN 420. The topic: "Entering the Fast Lane of the Information Highway." Bob Barber of Computer Information Technology and Jeff Osanka of English, Foreign Language & Speech will demonstrate how to use the Internet and will answer questions. Refreshments and door prizes included. - Pat McLaughlin

On-line financial administrative session trainings offered

The accounting area of College Finance will present training sessions, "On-line Financial Administration System," on Monday, Nov. 14, at 10 a.m. and again at 2 p.m. Both sessions will be in BU 115. Sessions last about two hours. Seating is limited so please make your reservations early by calling Jerry Wolski at Ext. 2609.

Student parents served

The Child Care Resource Connection is currently assisting 34 Lane students with child care subsidies on the student block grant program. There are a total of 46 slots in Lane County utilized right now. Lane students comprise 74 percent of this total.

Elected

Kerin Hoag, director of the Child Care Resource Connection, was re-elected secretary of the Oregon Child Care Resource and Referral Network Executive Committee at the network's annual conference last week.

Dance display featured in Library

Check out the dance display, "Dance Through the Ages," in the Library mezzanine gallery. Collages of ballet, modern and jazz dance will be displayed through November. - Mary Seereiter

Classified training funds available

Classified training & development funds are available at this time. Please turn in your request form to Judy Ward in Personnel Services as soon as possible. Once approved, funds are allocated on a first-come-first-serve basis. Request forms are available in Personnel Services. - Judy Ward, Ext. 2583.

Success conference proposals wanted

Proposals are due no later than Nov. 15 for the 10th Annual Student Success Strategies Conference to be held in Portland from Feb. 1-3, 1995. Send proposals directly to Connie Green at Chemeketa Community College. The conference will feature Dr. William Bridges as the keynote speaker. For more information and proposal forms, contact Sue Ferguson, Ext. 2025 or Miriam Thompson, Ext. 2315.

Guests welcome at Quinn presentation

Author, philosopher, futurist, and poet Daniel Quinn will speak to Jerome Garger's Peace and Conflict Studies class on Thursday, Nov. 10, from 11:30 a.m.-12:50 p.m., and to the public from 7-9 p.m., both in FOR 308. Staff are welcome at both events.

Print order missing

If you received an order back from Printing/Graphics on Friday, Nov. 4, please check to see if what you received was really yours. We're missing our order. If you can help, call Terry Caron, College Operations, Ext. 2311.

Herbert presentation available on video

What an inspirational meeting we had with Terri Herbert last week! Thanks to all who attended, especially to Terri, who demonstrated the teaching strategies that have endeared her to students. For those who weren't able to attend, a video of Terri's presentation and ensuing discussion is on reserve in the Library (ask for the Teachers Talking about Teaching materials). For more information about this and future TTT offerings, contact Pat McLaughlin at Ext. 2419.

Registration open for AAWCC annual conference

The Oregon Chapter of the American Association of Women in Community Colleges will hold its annual conference at the Red Lion in Portland from Dec. 1-2. The theme: "Connecting for Change: Transition in the Workplace." Presenters will include Lane's Business Development Center Director Jane Scheidecker. Conference applications are available at Julie Baker's desk, near ADM 209. Registration is required by Nov. 24 and costs \$99.

Managers wanted

Managers are needed to volunteer to serve on the Management Steering Committee for 1994-95. Contact Sandy Cutler, OSBDCN, Ext. 2105, if interested.

JOBS

Open to current LCC bargaining unit employees: Office production specialist, Social Science Dept., closes 11/14.

ADS

RENTAL WANTED: House in Harris St. School District preferred for our family of 3 (2 adults, 1 child). Will take furnished or unfurnished but would like to have refrigerator provided. From Dec. to June (somewhat flexible on dates). Call Gail Baker, Faculty, Science Dept., Ext. 2085.

SPRING BREAK TO AUSTRALIA and New Zealand. 15-day EF education tour. Departing March 14, 1995. \$2,165 fee includes fully guided tour, round trip airfare from Portland, continental breakfasts and dinners daily. Escorted by Kathy Hoy, instructor of Chinese art at Lane. Apply by Dec. 14. Call 343-7819 for details.

THE NATIVE AMERICAN STUDENT ASSOCIATION will hold a raffle on Nov. 23 to raise money for Lane's annual pow-wow on Dec. 3. Some of the items are on display in the glass case near Frank Merrill's office, second floor Center Building. Raffle tickets are available from Frank or from Debbie Roach in Admissions for \$1 each or six for \$5. For more info, call Frank at Ext. 2238, or Debbie at Ext. 2684.

ENTERTAINMENT '95 COUPON BOOKS available for preview and/or purchase! The cost is \$35 per book, filled with 2-for-1 and single discount coupons for dining, lodging, sports, and other entertainment in the

Willamette Valley area and nationwide. Thanks for your support of Greater Eugene Chorus, Sweet Adelines Int., Gloria Jarvis, Instructional Svcs., Ext. 2308.

MY PARENTS ARE MOVING TO A SMALLER HOUSE! Their loss could be your gain—miscellaneous furniture items for sale. 4-poster queen size bed w/ mattress & box springs, \$75; convertible bumper pool/card table, \$100; western wagonwheel rocking chair & tables (1950's vintage); writing desk, \$35; walnut coffee table, \$50; Sharp Carousel microwave, \$30; stereo turntable w/AM-FM radio, \$20. Call Ralph at 746-3709. Gloria Jarvis, Instructional Services, Ext. 2308.

HIKING SHOES: Vasque low top, women's size 7-1/2 medium, very good condition, used only four weeks, sadly too large for me, originally \$65, will sell for \$35. Judy Scher, Cmptr. Svcs., Ext. 2231; home, 344-2114.

FOR SALE: '92 HONDA ACCORD LX. Perfect condition inside and out. Only 21,000 miles. Beautiful cobalt blue exterior. Power everything with cruise and tilt. Includes entire service history. Asking \$16,390 (Selco quote). Extras: nose mask, floor mats, full warranty to 8/98. Contact Jody Larson, Math, Ext. 2017, or 689-6025.

THE DAILY

STAFF: Editor is Joan Aschim, Ext. 2591. Assistant Editor is Angela Miller, Ext. 2268.

SCHEDULE: The Daily publishes Mondays, Tuesdays, Wednesdays, and Thursdays during fall, winter and spring terms, except Tuesdays only during term breaks; and Tuesdays only during summer.

SUBMISSIONS: Include first and last name, department, and extension number. Submit Mac or IBM 3-1/2" disks, any program, when possible. Send via intercampus mail; deliver to the in-basket outside ADM 210; E-Mail to Joan Aschim; Internet to aschim@edlane.lane.edu; fax to 744-3970; or mail to The Daily, Lane Community College, 4000 E. 30th Ave., Eugene, OR 97405.

DEADLINE: Noon of the day prior to publication. Next-day placement is attempted but cannot be guaranteed. All items will be run once and repeated if space permits. Priority will be given to new items. Ads will be run twice; for repeat placement, notify The Daily; observe six times per term limit. All items subject to editing for brevity and Associated Press style.

The Daily

Published for the staff of Lane Community College

747-4501, ext. 2591

Wednesday, November 9, 1994

Edited by Angela Miller

Today & Thursday:

- Board of Education, today, 6:30 p.m., Boardroom.
- Classified Council, today, 3-5 p.m., PE 205.
- Legislative Action Team, Thursday, Nov. 10, 7:30-9 a.m., Boardroom.
- Faculty Council, Thursday, Nov. 10, 3-4:30 p.m., Boardroom. Agenda highlights: office space for part-time instructors and the presence of students under the age of 18 at Lane.
- Daniel Quinn, Thursday, Nov. 10, from 11:30 a.m.-12:50 p.m. to Jerome Garger's Peace and conflict studies class and to the public 7-9 p.m., both in FOR 308. Guests welcome.

Public session on Certificate of Initial Mastery

This year's eighth graders will be the first class to receive the Certificate of Initial Mastery in 1997. Students must demonstrate their knowledge and skills in 11 areas to receive the certificate. Oregon Department of Education staff recently drafted standards, describing what students must know and do to achieve each of the 11 areas. Parents, students, educators, and other members of the public are invited to voice opinions and ask questions about the standards on Thursday, Nov. 10, 6:30 p.m., at Lane Education Service District, 1200 Highway 99N.

Student loan exit interviews required

Federal regulations require that students receiving a Federal Stafford Loan or a Federal SLS Loan while attending Lane must attend an exit interview during their last term of attendance. The exit interview outlines financial planning, disclosure statements, repayment procedures, how to correspond with the lender, secondary markets, loan consolidation, options for making payments, and the consequences of default. Exit interviews are scheduled for Tuesday, Nov. 29 at 10 a.m., 2 p.m. and 6 p.m.; and Wednesday, Nov. 30 at 9 a.m., 1 p.m. and 4 p.m., all in HEA 105. The sessions will begin on time and latecomers cannot be admitted. Each session will last approximately 50 minutes.

Instructional Services welcomes Addie Lou Willis

Instructional Services welcomes Addie Lou Willis as the executive secretary to Vice President Larry Warford. She replaces Debbie Powers who recently resigned to take other employment. Willis comes to Instructional Services from the Social Science Department.

Classified professional development planned

Mark your calendars for Thursday, Nov. 17. Rose Huck, Regional Manager for the Easter Seal Society of Oregon will present a half day session titled "Success...It's All In Your Head." Mark your calendars and watch *The Daily!* - Julie Baker, Institutional Advancement.

Steve Candee featured on "LCC Today"

Steve Candee will appear on the "LCC Today" broadcast on Thursday, Nov. 10 at 4 p.m. on cable channel 12. He will address the initiative process and ballot measures 5, 8 and 15.

Special ticket price for "Wings"

A special ticket price for Lane faculty, staff and guests of \$6 each is being offered for the production of "Wings," a play written by Arthur Kopit. "Wings" is a story of a stroke victim's struggle to survive and find meaning. This production of "Wings" is entered in the Kennedy Center American College Theater Festival and has received very high marks on all elements of the production. "Wings" runs for two more weekends, November 11, 12, 18, and 19 at 8 p.m. For tickets, call the Box Office from 12-4 p.m. at Ext. 2202.

Calendar of events included in ATLAS kiosk

If you have scheduled an event or activity of interest to students, please notify Vicki Doughty in Counseling via E-mail or intercampus mail and the event or activity will be added to the events calendar on the ATLAS kiosks. - Vicki Doughty, Ext. 2055

Fall inservice surveys

Thanks to those of you who have turned in the fall inservice survey recently attached to *The Daily*. The information from the surveys will assist the Faculty Professional Development Team in coordinating next year's inservice plans. If you have not already returned your survey, they are being collected until November 14. An oops was made in the survey instructions: please use the scale of 1 = very useful, 3 = average and 5 = very useful. Thank you for participating in the planning process by returning your survey! - Julie Baker, Ext. 2199

THANKS

- Jim Cox has just finished loading the 1994-95 program, Oregon Career Information System, on approximately 30 computers on the main campus and in our outreach centers. He has been thorough and minimally disruptive to employee schedules. The Career Information Center wants to thank him for his hours of work in providing this wonderful career information program to many staff and students. Good job! - Jean Conklin
- The Athletics Department would like to extend thanks to all those who assisted at the 25th annual OSAA/US Bank State Cross-Country Championships on Nov. 5 at Lane. - Sharon Foster
- Special thanks to Campus Services crews who worked long hours in the rain this past weekend to keep our sewage system sending its contents to the right places after the sewage pumps broke down. The crews barely kept up with the problem during the cross-country meet on Saturday and then had to fix the pumps after the cross-country meet was finished and before we could open our doors on Monday. Paul Colvin described the work the crews had to do as "unpleasant." (And we know that Paul tends to understate most things...) -Marie Matsen

CLOSURE

- The Financial Aid Office will be closed for in-service on Friday, Nov. 18. There will be limited phone service from 10 a.m.-5 p.m.

ADS

TIRED OF HOTEL ROOMS? Room available in duplex apartment for short term stay. Fully furnished, a/c, color television, fully equipped kitchen, balcony with view. Near downtown and Amazon Park, on the busline. This second floor apartment room is on a quiet, tree lined street. Available for one night stay or longer, single person or couple. Call Adeena Sarah, MSW, LMT, 686-2822. - Patsy Raney, Women's Ctr.,

LOST QUILT DONATION - 100 yards of fabric! will the kind woman from Birth-to-Three who called me about a fabric donation please call me again?! I am in a panic because I lost your name and phone number. Leslie Opp-Beckman, ABSE, Ext. 2253 or home 343-5421.

RENTAL WANTED: House in Harris St. School District preferred for our family of 3 (2 adults, 1 child). Will take furnished or unfurnished but would like to have refrigerator provided. From Dec. to June (somewhat flexible on dates). Call Gail Baker, Faculty, Science Dept., Ext. 2085.

SPRING BREAK TO AUSTRALIA and New Zealand. 15-day EF education tour. Departing March 14, 1995. \$2,165 fee includes fully guided tour, round trip airfare from Portland, continental breakfasts and dinners daily. Escorted by Kathy Hoy, instructor of Chinese art at Lane. Apply by Dec. 14. Call 343-7819 for details.

FOR SALE: 1977 Dodge Colt, 4 speed. Great first car. \$650. Call Toby Finkelstein, T&D, Ext. 2853 days or 344-0514 evenings..

THE NATIVE AMERICAN STUDENT ASSOCIATION will hold a raffle on Nov. 23 to raise money for Lane's annual pow-wow on Dec. 3. Some of the items are on display in the glass case near Frank Merrill's office, 2nd floor Ctr. Bldg. Raffle tickets are available from Frank or from Debbie Roach in Admissions for \$1 each or six for \$5. For more info, call Frank at Ext. 2238, or Debbie at Ext. 2684.

ENTERTAINMENT '95 COUPON BOOKS available for preview and/or purchase! The cost is \$35 per book, filled with 2-for-1 and single discount coupons for dining, lodging, sports, and other entertainment in the Willamette Valley area and nationwide. Thanks for your support of Greater Eugene Chorus, Sweet Adelines Int., Gloria Jarvis, Inst. Svcs., Ext. 2308.

MY PARENTS ARE MOVING TO A SMALLER HOUSE! Their loss could be your gain-misc. furniture items for sale. 4-poster queen size bed w/ mattress & box springs, \$75; convertible bumper pool/card table, \$100; western wagonwheel rocking chair & tables (1950's vintage); writing desk, \$35; walnut coffee table, \$50; Sharp Carousel microwave, \$30; stereo turntable w/AM-FM radio, \$20. Call Ralph at 746-3709. Gloria Jarvis, Inst. Svcs.,

THE DAILY

CONTACTS: Editor: Joan Aschim, Ext. 2591. Assistant Editor: Angela Miller, Ext. 2268.

SCHEDULE: The Daily publishes Mondays, Tuesdays, Wednesdays, and Thursdays during fall, winter and spring terms, except Tuesdays only during term breaks; and Tuesdays only during summer.

SUBMISSIONS: Include first and last name, department, and extension number. Submit Mac or IBM 3-1/2" disks, any program, when possible. Send via intercampus mail; deliver to the in-basket outside ADM 210; E-Mail to Joan Aschim; Internet to aschim@edlane.lane.edu; fax to 744-3970; or mail to The Daily, Lane Community College, 4000 E. 30th Ave., Eugene, OR 97405.

DEADLINE: Noon of the day prior to publication. Next-day placement is attempted but cannot be guaranteed. All items will be run once and repeated if space permits. Priority will be given to new items. Ads will be run twice; for repeat placement, notify The Daily; observe six times per term limit. All items subject to editing for brevity and Associated Press style.

The Daily

Published for the staff of Lane Community College

747-4501, ext. 2591

Thursday, November 10, 1994

Edited by Joan Aschim

Today

- Faculty Council, today, 3-4:30 p.m., Boardroom.
- Author Daniel Quinn speaks to Jerome Garger's Peace & Conflict Studies class today from 11:30 a.m.-12:50 p.m., and to the public from 7-9 p.m., both FOR 308. Guests welcome at both presentations.

Moskus' open hours

President Jerry Moskus will hold open office hours on Thursday, Nov. 17, from 1-3 p.m. Please call Tracy Simms at Ext. 2200 to schedule your visit.

Laura Roberts named employee of the month



Jim Ellison, Larry Warford, Laura Roberts, and Sandy Ing

When three vice presidents walked into Student Health to see Laura Roberts, she thought they wanted flu shots. Instead, they presented her with the Outstanding Classified Employee of the Month for November award. The surprise left the administrative assistant speechless and smiling. She received a certificate, chocolate and balloons. Her portrait will be posted on the classified union bulletin board, and she will get a prime parking space for a month, plus lunch with the president.

Nominators said of Roberts: "She's in the office to serve the public first; paperwork comes later." "She is a lifelong student." "Laura is creative in everything. I have never seen her sit back and not tackle a problem ... she is a go-getter." She is appreciated for being calm and quick in emergencies and at all times helpful to students and staff.

Roberts first set foot on campus as a student in 1983 and earned a certificate in medical office assisting two years later. During that time she held work-study jobs in Telecourses and Family and Health Careers. She was hired as a clerk in the nursing lab in the fall of 1985 and moved to her current post in 1987. In addition to her busy job, Roberts has served on the Classified Professional Development Team and Classified Council.

Roberts went to high school in Springfield and elementary school in Noti. "I'm a real Eugene girl," she says. "I have always lived here and think it's the best!"

Success workshop includes free parking

Free parking in the Overpark will be provided for attendees of the "Success... It's All In Your Head!" workshop on Thursday, Nov. 17, at the Downtown Athletic Club, sponsored by the Classified Professional Development Team. Just bring your parking ticket to the presentation for validation. Session I is 8:30 a.m.-noon with breakfast buffet beginning at 7:30 a.m. Session II is 1:30-5 p.m. with lunch from noon-1:15 p.m. Julie Baker's answering machine, Ext. 2199, will take your reservation: leave your name, extension, which session you will attend, and if you want the meal accompanying that session.

Hult concert features Lane faculty

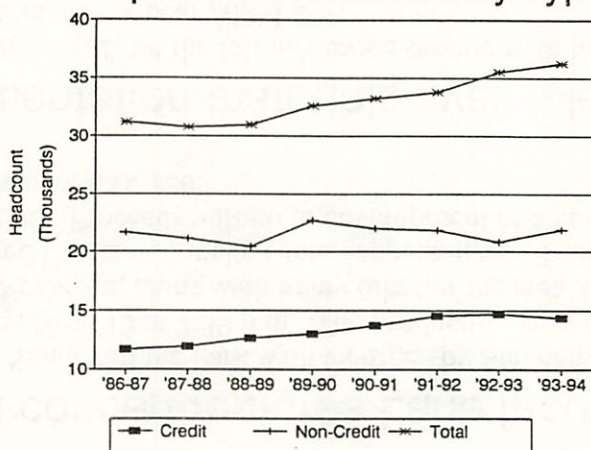
"Sunday in the Park with George" by Stephen Sondheim will be presented at the Hult Center this Sunday, Nov. 13 at 7:30 p.m. The production features Lane instructors Jim Greenwood, Dan Sachs and John Workman, along with many other of the area's finest performers. Local personalities Ruth Bascom and Fred Crafts will make cameo appearances. Tickets are \$16.50 at the Hult box office or by phone, 687-5000. Proceeds will go to development of a new theater company, Vortex Theater. - Jim Greenwood, Ext. 2209

Presentation materials available

- Handouts from the fall in-service session with humorist Leigh Anne Jasheway are available at Julie Baker's desk near ADM 209.
- Handouts from assessment specialist Bill Moore's presentation titled "Developing a Learning (and Learner) Centered Framework for Institutional Advancement" are available at Julie Baker's desk near ADM 209.

KEY BENCHMARKS

Unduplicated Headcount by Type



- ☒ Over the past eight years, there has been a 23% increase in credit student headcount.
- ☒ Over the seven-year period, non-credit student headcount has remained fairly stable.
- ☒ Total unduplicated student headcount has increased by 16% since 1986-87. It reached an all-time high of 36,256 in 1993-94.

Prepared by Research and Planning, Sept. 9, 1994

the Fast Lane of the Information Highway" with Bob Barber and Jeff Osanka.

Reminders

- College Finance will present training sessions on the "On-line Financial Administration System." on Monday, Nov. 14, at 10 a.m. and again at 2 p.m. Both two-hour sessions will be in BUS 115. Seating is limited so make your reservations early with Jerry Wolski at Ext. 2609.
- Proposals are due Nov. 15 for the 10th Annual Student Success Strategies Conference to be held in Portland from Feb. 1-3, 1995. Send proposals directly to Connie Green at Chemeketa Community College. Dr. William Bridges will be the keynote speaker. For more information and proposal forms, contact Sue Ferguson, Ext. 2025 or Miriam Thompson, Ext. 2315.
- Managers are needed to volunteer to serve on the Management Steering Committee for 1994-95. Contact Sandy Cutler, OSBDCN, Ext. 2105, if interested.
- TTT will meet Tuesday, Nov. 15, from 3-4:30 p.m., in CEN 420. Topic: "Entering

Call for presentations

The League for Innovation is calling for presentation proposals for the Seventh Annual International Conference on Leadership Development in Community Colleges to be held from July 23-26, 1995, in San Francisco. Proposal deadline is Jan. 6, 1995. Brochures with instructions for submitting proposals are available from Instructional Services, Ext. 2120.

ADS

NICE MOUNTAIN BIKE, 18" frame. Also: 1993 FORD F150 pickup, short/wide, 300/6, 5-speed, dual gas tanks, tool box, extra rims with studded snow tires, and tow package, \$13,500. Jason Woodruff, Flight Tech, 689-2021, or 485-1721.

ROLL TOP DESK, solid oak, \$450. Julia Munkvold, F&HC, Ext. 2636, or 688-6644 after 5 p.m.

TIRED OF HOTEL ROOMS? Room available in duplex apartment for short term stay. Fully furnished, a/c, color television, fully equipped kitchen, balcony with view. Near downtown and Amazon Park, on the busline. This second floor apartment room is on a quiet, tree lined street. Available for one night stay or longer, single person or couple. Call Adeena Sarah, MSW, LMT, 686-2822. - Patsy Raney, Women's Ctr.

LOST QUILT DONATION - 100 yards of fabric! Will the kind woman from Birth-to-Three who called me about a fabric donation please call me again?! I am in a panic because I lost your name and phone number. Leslie Opp-Beckman, ABSE, Ext. 2253 or home 343-5421.

FOR SALE: 1977 Dodge Colt, 4 speed. Great first car. \$650. Call Toby Finkelstein, T&D, Ext. 2853 days or 344-0514 evenings.

POSTERS, CALENDARS, NOTES, mugs, Post-It Notes... 24-page catalog of ideas to brighten your workspace, child's room, or gift list. Your purchase supports the free lending library of assistive devices in the TALN Center. Come by IND 207 or call Ext. 2149 for a closer look. Order now! - Leigh Alice Petty, Exts. 2148/2149.

FOR SALE: '92 HONDA ACCORD LX. Perfect condition inside and out. Only 21,000 miles. Beautiful cobalt blue exterior. Power everything with cruise and tilt. Includes entire service history. Asking \$16,390 (Selco quote). Extras: nose mask, floor mats, full warranty to 8/98. Contact Jody Larson, Math, Ext. 2017, or 689-6025.

LORNA FUNNELL asks her old friends at Lane to write to her c/o Yale Foreign Language Institute; #703 Elite Building 44-32 Yoido-Dong; Youngdengpo-ku, Seoul; 150-010 Korea.

THE DAILY

STAFF: Editor is Joan Aschim, Ext. 2591. Assistant Editor is Angela Miller, Ext. 2268.

SCHEDULE: The Daily publishes Mondays, Tuesdays, Wednesdays, and Thursdays during fall, winter and spring terms, except Tuesdays only during term breaks; and Tuesdays only during summer.

SUBMISSIONS: Include first and last name, department, and extension number. Submit Mac or IBM 3-1/2" disks, any program, when possible. Send via intercampus mail; deliver to the in-basket outside ADM 210; E-Mail to Joan Aschim; Internet to aschim@edlane.lane.edu; fax to 744-3970; or mail to The Daily, Lane Community College, 4000 E. 30th Ave., Eugene, OR 97405.

DEADLINE: Noon of the day prior to publication. Next-day placement is attempted but cannot be guaranteed. All items will be run once and repeated if space permits. Priority will be given to new items. Ads will be run twice; for repeat placement, notify The Daily; observe six times per term limit. All items subject to editing for brevity and Associated Press style.

The Daily

Published for the staff of Lane Community College

747-4501, ext. 2591

Monday, November 14, 1994

Edited by Joan Aschim

This week

- College Finance training session, "On-Line Financial Administration System," today, 10 a.m. and 2 p.m., BUS 115. Sessions last 2 hours. Seating is limited. For reservations, call Ext. 2609.
- Raymond Bareiss lecture and reception, Wednesday, Nov. 16, 1 p.m., Art Department Gallery.
- College Council, Tuesday, Nov. 15, 1:30-3 p.m., Boardroom.
- TTT, Tuesday, Nov. 15, 3-4:30 p.m., CEN 420. Topic: the information highway.
- Instructional Services Council, Wednesday, Nov. 16, 1:30-3 p.m., Boardroom.
- "Success...It's All In Your Head," Thursday, Nov. 17, call Ext. 2199 today for reservations.
- President Moskus open office, Thursday, Nov. 17, 1-3 p.m. Call Ext. 2200 to schedule a visit.
- Financial Aid closed for in-service, Friday, Nov. 18, 10 a.m.-5 p.m.
- Managers' Forum, Friday, Nov. 18, 8:30 a.m., FOR 308.

Sony to be on campus

Sony representatives will be on main campus to hold orientations in the Forum Building about their hiring process on Nov. 15, 16 and 17 for people who have registered with the Oregon Employment Department. Participants must be invited by the OED and individuals interested in jobs at Sony must register with the OED. - Dave Oatman

United Way contributions mounting

Lane has reached the halfway point in its goal to break \$21,000 this year. Donations to date exceed \$11,000. However, there's only two weeks remaining in the campaign. If you haven't contributed, please consider making a donation to this worthy cause. Send completed claim forms to Lloyd Rain in Purchasing. If you haven't received a contribution form, contact Lloyd Rain, Ext. 2208.

Omnitek offers new service "hot line"

Omnitek, one of Lane's major providers of microcomputers, has just inaugurated a new service "hot line" to provide technical information or service on Omnitek machines. The number is 342-7438. - Lloyd Rain, Purchasing

Student loan exit interviews required

Federal regulations require that students receiving a Federal Stafford Loan or a Federal SLS Loan while attending Lane must attend an exit interview during their last term of attendance. The exit interview outlines financial planning, disclosure statements, repayment procedures, how to correspond with the lender, secondary markets, loan consolidation, options for making payments, and the consequences of default. Exit interviews are scheduled for Tuesday, Nov. 29 at 10 a.m., 2 p.m. and 6 p.m.; and Wednesday, Nov. 30 at 9 a.m., 1 p.m. and 4 p.m., all in HEA 105. The sessions will begin on time and latecomers cannot be admitted. Each session will last approximately 50 minutes.

Students plan watercolor sale

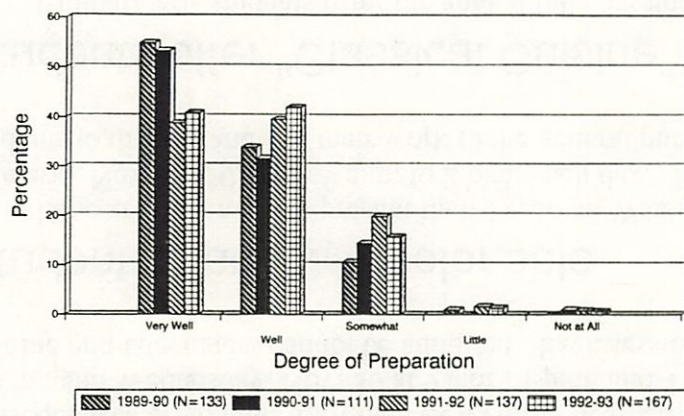
Lane art students will present their Seasonal Watercolor Show and Sale in the Center Building cafeteria, Nov. 29-30, from 9 a.m. to 2 p.m. each day. This is an opportunity, sometimes the first, for students to display and sell their work to the general public. - Babe Gay and Satoko Okito

Students offer "Classical Cuisine" dinner

Culinary arts students offer the annual fall Classical Cuisine dinner on Thursday, Dec. 1, at 6 p.m. Dinner, a wine bar and live music will be presented in a specially arranged section of the cafeteria. The menu features tangy artichoke soup, curried seafood crepes, breast of chicken Chesapeake, Grand Marnier soufflé, cookies and coffee. Students prepare the meals and provide the service as part of their study in Lane's two-year associate of applied science degree program in culinary arts. The dinner cost is \$14.50. Reservations are required by November 17 and can be made by calling Ext. 2697.

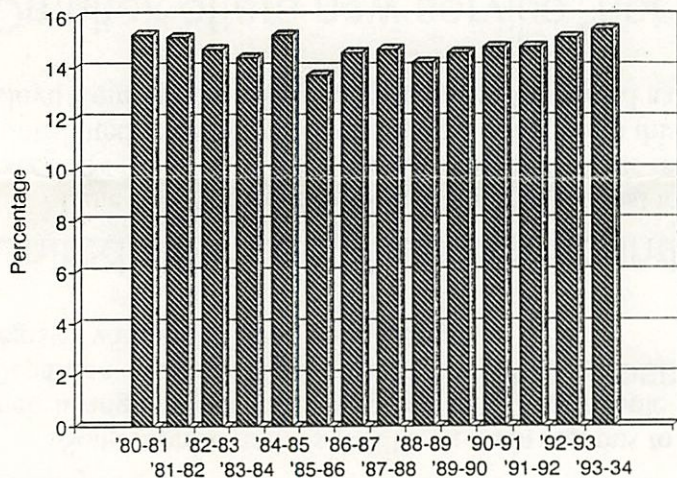
KEY BENCHMARKS

Satisfaction Level Indicated by LDC Students Who Transferred



- ☒ Of former 1992-93 lower division collegiate (LDC) majors (i.e., graduates and leavers), 67% transferred to another institution.
- ☒ Approximately 83% of these former students felt Lane prepared them "very well" or "well" for transferring to another college or university.

% of Population Age 15+ Served



- ☒ The percentage of county population over age 15 served by Lane has remained fairly stable since 1980-81.
- ☒ The percentage served in 1993-94 (15.5%) reached the previous high percentages of the early 1980s outmigration from the county.

Prepared by Research and Planning

Renaissance menu

This week's menu in the Renaissance Room is leek and potato soup, pizza rustica, vegetable of the day, tri-tip steak sauté nicoise, and marionberry sherbet with cookie. Call Ext. 2697 for reservations.

ADS

HELP WANTED: Two part-time temporary test administrators at \$8/hr and several proctors at \$7/hr are needed to share work schedule. Testing work to occur from Nov. 28-Dec. 17. Testing times will be 8 a.m.-noon, 1-5 p.m., and 6-10 p.m. Associate degree or equivalent, excellent communication and organization skills, experience in organizing office functions. Send completed LCC application with references to Business & Industry Services, LCC Downtown Center, 1059 Willamette, Eugene OR 97401.

SPRING BREAK: BRITAIN, IRELAND, WALES, SCOTLAND. 16-day EF education tour. Departing June 20. \$2,169 student and \$2,411 adult (25+), includes round trip airfare from Portland, good hotels with private facilities, continental breakfast and dinner daily, and fully guided tour. Escorted by Sharon Thomas, English instructor. Info meeting and application forms will be offered Monday, Nov. 21, 3 p.m., CEN 468, English Dept. staff lounge. Application deadline is March 22. Bring a friend to the meeting and be prepared to make an \$85 deposit (part of above fee) to reserve space.

FOR SALE: 1980 TOYOTA TERCEL, good parts car, needs new engine, 2 extra spare tires included for \$200; also oil-filled electric heater, used only 1 year, \$25. Call Cathie Reschke, Disability Services, Ext. 2059; or 942-5972 eves.

FOR SALE: ENTERTAINMENT CENTER, beautiful cherrywood finish, triangular shape custom-built for a corner but never used, cabinet doors open to adjustable shelving, 52" high, two sides 37-1/2", 53" across face; TV opening is 21-1/4" high x 31-1/2" wide. Sacrifice for \$375. Miriam Thompson, Student Services, Ext. 2315.

NICE MOUNTAIN BIKE, 18" frame. Also: 1993 FORD F150 pickup, short/wide, 300/6, 5-speed, dual gas tanks, tool box, extra rims with studded snow tires, and tow package, \$13,500. Jason Woodruff, Flight Tech, 689-2021, or 485-1721.

ROLL TOP DESK, solid oak, \$450. Julia Munkvold, F&HC, Ext. 2636, or 688-6644 after 5 p.m.

THE NATIVE AMERICAN STUDENT ASSOCIATION will hold a raffle on Nov. 23 to raise money for Lane's annual pow-wow on Dec. 3. Some of the items are on display in the glass case near Frank Merrill's office, 2nd floor Ctr. Bldg. Raffle tickets are available from Frank or from Debbie Roach in Admissions for \$1 each or six for \$5. For more info, call Frank at Ext. 2238, or Debbie at Ext. 2684.

THE DAILY

STAFF: Editor is Joan Aschim, Ext. 2591. Assistant Editor is Angela Miller, Ext. 2268.

SCHEDULE: The Daily publishes Mondays, Tuesdays, Wednesdays, and Thursdays during fall, winter and spring terms, except Tuesdays only during term breaks; and Tuesdays only during summer.

SUBMISSIONS: Include first and last name, department, and extension number. Submit Mac or IBM 3-1/2" disks, any program, when possible. Send via intercampus mail; deliver to the in-basket outside ADM 210; E-Mail to Joan Aschim; Internet to aschim@edlane.lane.edu; fax to 744-3970; or mail to The Daily, Lane Community College, 4000 E. 30th Ave., Eugene, OR 97405.

DEADLINE: Noon of the day prior to publication. Next-day placement is attempted but cannot be guaranteed. All items will be run once and repeated if space permits. Priority will be given to new items. Ads will be run twice; for repeat placement, notify The Daily; observe six times per term limit. All items subject to editing for brevity and Associated Press style.

The Daily

Published for the staff of Lane Community College

747-4501, ext. 2591

Tuesday, November 15, 1994.

Edited by Joan Aschim

Today

- College Council, 1:30-3 p.m., Boardroom.
- TTT, 3-4:30 p.m., CEN 420. Topic: the information highway.

Co-op Education receives Title VIII funding

The Cooperative Education Department received approval for Title VIII grant funds totaling \$375,000 over a five-year period. Funds will be used to promote the program, expand staff development activities, and cover increased staffing costs.

Two videoconferences offered this week

A teleconference, "Getting Ready for a 21st Century Career," will be held on Wednesday, November 16, from 10 a.m.-12 noon, in CEN 10. It's free. This teleconference will address how 21st century careers will differ from today's careers. What used to get people ahead isn't going to work anymore. Tomorrow, success will demand a level of career self-understanding that few of us possess. This program will lay out a career building agenda and will show you how to rethink what you can and want to do. It is not a job-search program, but instead shows how to create a personally meaningful and economically viable worklife under very difficult conditions. All interested staff are invited to attend. For more information, contact Cynde Leathers at Ext. 2260.

A teleconference, "Computer Bulletin Boards: The Technology Revolution in Higher Education," will be held on Friday, November 18, from 10-11:30 a.m., in CEN 10. It's free. This teleconference will illustrate the various "educational services" available for professional educators via computer bulletin boards and many other information sources. It will provide a greater understanding of how to connect, search and obtain these services via the Internet. All interested staff are invited to attend. For more information, contact Cynde Leathers at Ext. 2260.

Advice offered on whether to leave your computer on

The State University of New York at Buffalo has published a 12-page booklet for its faculty and staff describing how much energy computer users waste. "UB Guide to Green Computing" estimates that a personal computer and laser printer consume \$200 a year in electricity when left on 24 hours a day. Tips for saving energy include bundling tasks that require the computer, turning the machine off when not in use, and leaving the printer off until ready to print. Authors also recommend recycling toner cartridges, reusing old disks, and using e-mail to reduce paper use. The booklet claims computer users must not fall victim to the myth that computers are harmed if they are turned on and off too frequently. Copies of the booklet are available for \$2 from Conserve UB, University Facilities, 120 John Beane Center, State University of New York at Buffalo, Amherst NY 14260; phone (716) 645-3636.

Success workshop address clarification

The "Success ... It's All in Your Head" workshop on Thursday, Nov. 17, sponsored by the Classified Professional Development Team, will be held at the Downtown Athletic Club. The correct address is 999 Willamette. It's not too late to reserve a space. Call Julie Baker at Ext. 2199 for reservations.

Flu shots still available

Flu shots are still available at Student Health Services. The shots will be given on Wednesday, Nov. 23—the day before Thanksgiving. The cost is \$8. Call Ext. 2665 for an appointment and have a healthy holiday.

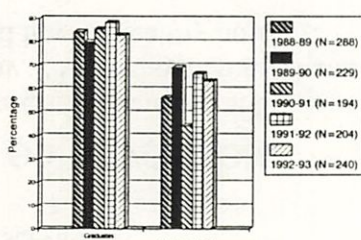
THANKS

I want to thank all of my friends at LCC for their cards and words of encouragement on the recent loss of my father. It really helps to know that I have so much support. - Nancy Jaques, Curriculum/Scheduling

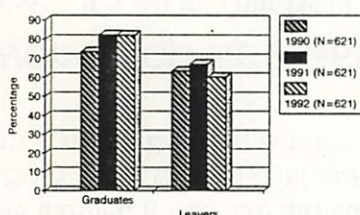
KEY BENCHMARKS

Employment of Professional-Technical Students in Related Jobs

Student Follow-Up Surveys

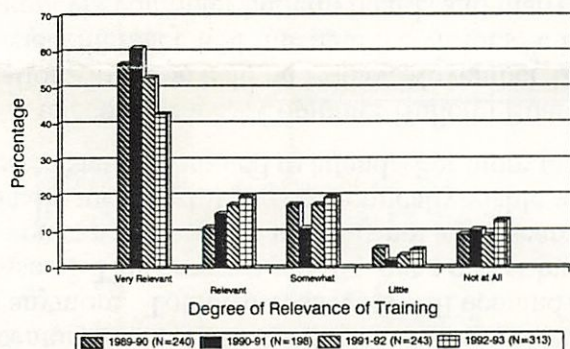


Oregon Automated Follow-Up Study
1990-91 Cohort



- ☒ Accordingly to Lane's follow-up surveys and studies, a high percentage of former professional-technical students are employed in jobs related to their training.
- ☒ Lane's follow-up surveys reveal that graduates are more likely to be employed in related jobs than are leavers.
- ☒ According to the Oregon Automated Follow-Up System, 76% of the 1990-91 students are employed in Oregon in related jobs.

Relevance of Former Students' Professional Technical Training



- ☒ Of former 1992-93 professional technical students, 85% were employed full- or part-time.
- ☒ Of these employed former students, 79% were working in jobs for which they had been trained at Lane. Graduates were more likely to be working in related jobs than were no formal award completers.
- ☒ Of the employed students, 63% felt that Lane's preparation was "very relevant" or "relevant" to their jobs.

Prepared by Research and Planning

ADS

AMERICAN RED CROSS night for Eugene Ballet's "Nutcracker" at the Hult Center is Thursday, Dec. 9, at 8 p.m. Interested persons may contact the Lane County Chapter of the American Red Cross at 344-5244, or Linda Fossen, Student Services, at Ext. 2315, by Nov. 28 for tickets and information.

THANKSGIVING DRAWING at the Bookstore, Nov. 22, 2 p.m. Enter now to win a GE clock radio. One entry per person per day.

FREE YOURSELF FROM THE CROWDS AND HASSLES this holiday season, or any gift-giving occasion, with Amagifts. The recipient of an Amagift chooses one of more than 40 quality selections, fills out the postpaid card and drops it in the mail. What could be easier? For details call Andy McClure at 342-2505, or Campus Services, Ext. 2578.

RESPONSIBLE MALE STUDENT looking for house sitting situation. Prefers 2 month minimum. Call Ann Clark, IT, Ext. 2382, leave message.

HELP WANTED: Two part-time temporary test administrators at \$8/hr and several proctors at \$7/hr are needed to share work schedule. Testing work to occur from Nov. 28-Dec.17. Testing times will be 8 a.m.-noon, 1-5 p.m., and 6-10 p.m. Associate degree or equivalent, excellent communication and organization skills, experience in organizing office functions. Send completed LCC application with references to Business & Industry Services, LCC Downtown Center, 1059 Willamette, Eugene OR 97401.

BRITAIN, IRELAND, WALES, SCOTLAND. 16-day EF education tour. Departing June 20. \$2,169 student and \$2,411 adult (25+), includes round trip airfare from Portland, good hotels with private facilities, continental breakfast and dinner daily, and fully guided tour. Escorted by Sharon Thomas, English instructor. Info meeting and application forms will be offered Monday, Nov. 21, 3 p.m., CEN 468, English Dept. staff

lounge. Application deadline is March 22. Bring a friend to the meeting and be prepared to make an \$85 deposit (part of above fee) to reserve space.

FOR SALE: 1980 TOYOTA TERCEL, good parts car, needs new engine, 2 extra spare tires included for \$200; also oil-filled electric heater, used only 1 year, \$25. Call Cathie Reschke, Disability Services, Ext. 2059; or 942-5972 eves.

THE DAILY editor is Joan Aschim, Ext. 2591; Assistant Editor is Angela Miller, Ext. 2268.

SCHEDULE: The Daily publishes Mondays, Tuesdays, Wednesdays, and Thursdays during fall, winter and spring terms, except Tuesdays only during term breaks; and Tuesdays only during summer.

SUBMISSIONS: Include first and last name, department, and extension number. Submit Mac or IBM 3-1/2" disks, any program, when possible. Send via intercampus mail; deliver to the in-basket outside ADM 210; E-Mail to Joan Aschim; Internet to aschim@edlane.lane.edu; fax to 744-3970; or mail to The Daily, Lane Community College, 4000 E. 30th Ave., Eugene, OR 97405.

DEADLINE: Noon of the day prior to publication. Next-day placement is attempted but cannot be guaranteed. All items will be run once and repeated if space permits. Priority will be given to new items. Ads will be run twice; for repeat placement, notify The Daily; observe six times per term limit. All items subject to editing for brevity and Associated Press style.

The Daily

Published for the staff of Lane Community College

747-4501, ext. 2591

Wednesday, November 16, 1994

Edited by Angela Miller

Today:

- Instructional Services Council, today, 1:30-3 p.m., Boardroom.
- International Student Social Hour, today, 3-5 p.m., northeast corner of the cafeteria. (See below)
- Raymond Bareiss lecture and reception, today, 1 p.m., Art Department Gallery.

International students host social hour

The second of six social hours scheduled for the 1994-95 academic year and sponsored by the international students will be held today, from 3-5 p.m., in the northeast corner of the cafeteria. This event will feature students from Australia and Trinidad who will present slides, videos, souvenirs, and treasures from their homelands. Exotic fruits and beverages will be served.

Board report

Lane will seek voter approval of a bond measure in May, the Board of Education voted unanimously at its Nov. 9 meeting. The board will review an updated list of \$40 million in construction and equipment projects proposed for bond financing on Dec. 14 at 4 p.m., followed by a regular board meeting at 5 p.m.

Lane's affirmative action record drew criticism from representatives of the local NAACP and other guests, following a report by Affirmative Action Director Donna Albro. Over the last 10 years, only 3 percent of employees have been minorities. Women have been much better represented. The board agreed with guests' concerns and said it will pursue more efforts to improve diversity at Lane. Steps already taken in that direction included hiring Albro, the first affirmative action director in 14 years; updating the affirmative action plan for the first time in 10 years; participating in the WICHE project to draft a diversity plan for Lane and appointing a diversity committee to implement the plan.

In other action:

- Four citizens were appointed to the Budget Committee for three-year terms: Dianne Burch to Zone 1 for a term ending June 30, 1997; CJ Mann to Zone 3 for a term ending June 30, 1997; Jim Reeves to Zone 4 for a term ending June 30 1996; and Martin Lewis to Zone 5 for a term ending June 30, 1997.
- Conducted the first reading of a revised policy on student records. The board will vote on the policy at its next meeting.
- The board agreed to lease the Wildish Building at 1445 Willamette in Eugene from the LCC Foundation. Building owner Norman Wildish has indicated that he may donate the building to Lane contingent upon such a lease.
- The board approved the retirements of Audrey Razmus from Foodservices, Joyce Kommer and Rosco Wright from Art and Applied Design, and James Huntington from Electronics.
- The board approved routine budget transfers.

In other discussion, congratulations were extended to Peter Sorenson for election to the Oregon senate and to Cindy Weeldreyer for election to the Lane County Board of Commissioners.

Faculty task force to meet

The Future Faculty Task Force will meet on Thursday, Nov 17, from 8:30-10 a.m., in SCI 133.

Flu shots still available

Flu shots are still available at Student Health Services. The shots will be given through Wednesday, Nov. 23—the day before Thanksgiving. The cost is \$8. Call Ext. 2665 for an appointment and have a healthy holiday.

Welcome Mary Jo Workman

The Cooperative Education Department welcomed Mary Jo Workman to their department team on October 31. Workman is the new co-op receptionist and Professional Technical Coordinating Committee secretary. She began working in The co-op department last June as a cooperative education student. Workman is currently an accounting student at Lane and plans to transfer to the U of O.

ASLCC offers lecture series tickets at a reduced rate

The Institute for Science, Engineering and Public Policy is offering a series of science, technology and society lectures at the Hult Center. ASLCC will subsidize 30 tickets per lecture for five of the lectures in this series to interested students. The student subsidized ticket price will be \$7.50 per lecture. There is a sign up sheet in the ASLCC office, CEN 479, for the first two lectures, "Composing Community" with Dr. Mary Catherine Bateson on Monday, Nov. 21 and "The Embodied Mind" with Dr. Francisco Varela on Monday, Dec. 12. To insure fairness for all those interested in the lectures, there will be a random drawing if the list goes over 30 students. Students will be notified by phone five days prior to the event if they are eligible to purchase a subsidized ticket. For more information, contact Janette Scales, Ext. 2333.

Insurance in retirement

Classified and management employees who are changing insurance carriers and/or adding dependents must do so at the open enrollment prior to their retirement date to insure continued coverage into retirement. These changes cannot be made after retirement. Faculty must have two years of immediate prior coverage with OEA Choice before retirement to be eligible to carry their insurance into retirement. Changing insurance carriers and/or adding dependents must, also, be done prior to retirement. - Carol Goldsberry

Last weekend to see "Wings" production

A special ticket price for Lane faculty, staff and guests of \$6 each is being offered for the production of "Wings." The final performances of "Wings" are Friday, Nov. 18 and Saturday, Nov. 19 at 8 p.m. For tickets, call the Box Office from 12-4 p.m. at Ext. 2202.

ADS

FOR SALE: Contemporary three-cushion sofa manufactured by Alan White. Beige tones with dark brown warp threads for a "tweedy-checked" effect. (See pillow in my office.) Purchased three years ago from M. Jacobs Furniture. \$275, OBO. Bob Boettcher, Science, Ext. 2446 or home 683-4918.

AMERICAN RED CROSS night for Eugene Ballet's "Nutcracker" at the Hult Center is Thursday, Dec. 9, at 8 p.m. Interested persons may contact the Lane County Chapter of the American Red Cross at 344-5244, or Linda Fossen, Student Services, at Ext. 2315, by Nov. 28 for tickets and information.

THANKSGIVING DRAWING at the Bookstore, Nov. 22, 2 p.m. Enter now to win a GE clock radio. One entry per person per day.

RESPONSIBLE MALE STUDENT looking for house sitting situation. Prefers 2 month

minimum. Call Ann Clark, IT, Ext. 2382, leave message.

FREE YOURSELF FROM THE CROWDS AND HASSLES this holiday season, or any gift-giving occasion, with Amagifts. The recipient of an Amagift chooses one of more than 40 quality selections, fills out the postpaid card and drops it in the mail. What could be easier? For details call Andy McClure at 342-2505, or Campus Services, Ext. 2578.

THE NATIVE AMERICAN STUDENT ASSOCIATION will hold a raffle on Nov. 23 to raise money for Lane's annual pow-wow on Dec. 3. Some of the items are on display in the glass case near Frank Merrill's office, 2nd floor Ctr. Bldg. Raffle tickets are available from Frank or from Debbie Roach in Admissions for \$1 each or six for \$5. For more info, call Frank at Ext. 2238, or Debbie at Ext. 2684.

THE DAILY

CONTACTS: Editor: Joan Aschim, Ext. 2591. Assistant Editor: Angela Miller, Ext. 2268.

SCHEDULE: The Daily publishes Mondays, Tuesdays, Wednesdays, and Thursdays during fall, winter and spring terms, except Tuesdays only during term breaks; and Tuesdays only during summer.

SUBMISSIONS: Include first and last name, department, and extension number. Submit Mac or IBM 3-1/2" disks, any program, when possible. Send via intercampus mail; deliver to the in-basket outside ADM 210; E-Mail to Joan Aschim; Internet to aschim@edlane.lane.edu; fax to 744-3970; or mail to The Daily, Lane Community College, 4000 E. 30th Ave., Eugene, OR 97405.

DEADLINE: Noon of the day prior to publication. Next-day placement is attempted but cannot be guaranteed. All items will be run once and repeated if space permits. Priority will be given to new items. Ads will be run twice; for repeat placement, notify The Daily; observe six times per term limit. All items subject to editing for brevity and Associated Press style.

The Daily

Published for the staff of Lane Community College

747-4501, ext. 2591

Thursday, November 17, 1994

Edited by Joan Aschim

Today & Friday

- Classical Cuisine Dinner reservation deadline today; call Ext. 2697.
- Facilities Management Committee, today, (see below).
- Teleconference: "Computer Bulletin Boards: The Technology Revolution in Higher Education," Friday, Nov. 18, 10-11:30 a.m., CEN 10.
- Managers' Forum, Friday, Nov. 18, 8:30-10 a.m., FOR 308.
- Financial Aid in-service Friday, Nov. 18, 10 a.m.-5 p.m., limited phone service available.
- "Wings," last weekend, Friday, Nov. 18 and Saturday, Nov. 19 at 8 p.m. Call Ext. 2202 from 12-4 p.m. for tickets (\$6 for Lane faculty, staff and guests).

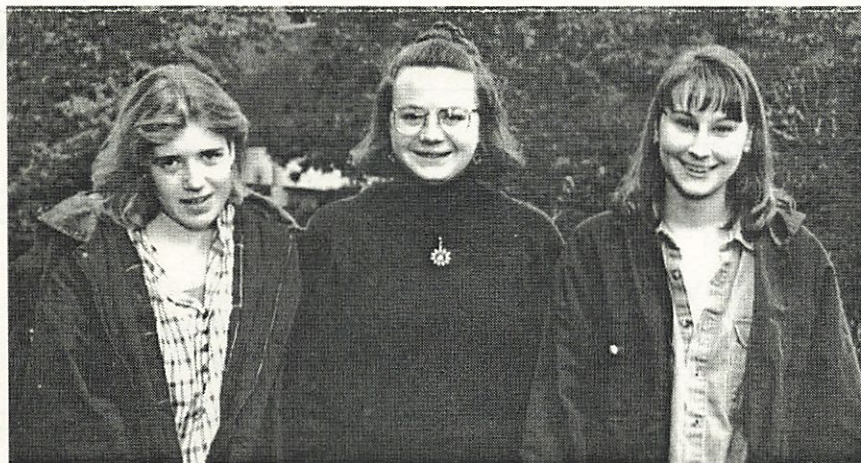
Facilities committee meets today

The Facilities Management Committee will meet today at 3 p.m. in the Boardroom. Agenda topics include proposal for a longhouse, Computer Information Technology space, Ashlane housing settlement, construction bond, and the construction priorities list. All interested students and staff are invited to attend.

Part-time Full-time Committee to meet

The College Council Part-Time Full-Time Committee will meet on Monday, Nov. 21, from 8:30-10 a.m., in the Boardroom. - Maxine Frauman

Meet the 1994-95 Student Ambassadors



Chantal Angot, Angela Kellner, and Laura Walker

Pictured are Chantal Angot, Angela Kellner, and Laura Walker, student ambassadors for this academic year. The ambassadors lead campus tours, visit district high schools as representatives of the college, and lend clerical support in the High School Relations Office.

Angot completed her AHS diploma in 1994, where she earned a 4.0 GPA and volunteered as a

GED tutor. She's planning to transfer to a four-year school as an education major and is looking forward to sharing her positive experience at Lane with prospective students.

Kellner graduated from the Adult High School program in 1991. She is currently working on her AAOT degree, and has a 4.0 GPA in her five terms at Lane. She also works at KLCC as the music librarian and music assistant. She plans to continue her education at Lewis & Clark College to prepare for joining the Peace Corps and teaching abroad.

Walker, a 1992 graduate of Pleasant Hill High School, is returning for a second year as an ambassador. She enjoys visiting local high schools and working with the other staff in the Admissions/High School Relations Office. She received her AAOT degree from Lane last June and is now taking additional classes to further her education. Walker is a whimsical artist and won the People's Choice Award at the Art in the Vineyard FUNiture exhibit last summer. She wants to be a cowgirl.

Brown bag luncheon

The Women's Program invites all interested staff to a brown bag lunch on Monday, Nov. 21, from 12-1 p.m. in the Boardroom. Guest speaker will be Diane Abu-Jaber who will read from her recent work and discuss the process of writing. Abu-Jaber is an assistant professor of English at the University of Oregon. She recently won the H.L. Davis Award for Fiction for her novel *Arabian Jazz*.

Campus Ministry launches annual fund drive

Campus Ministry needs to raise \$30,000 to maintain services to students and staff. About \$6,000 already has been raised. To help, call Jim Dieringer at Ext. 2850. He would be happy to speak at department meetings about Campus Ministry and what it does.

Videoconference announcement

A teleconference, "Caring, Compassion, and Education: American Indians/Alaska Natives Living With HIV/AIDS," will be held on Tuesday, November 22, from 11 a.m.-12:30 p.m. in CEN 10. It's free. This teleconference will illustrate the various "educational services" available for professional educators via computer bulletin boards and many other information sources. It will provide a greater understanding of how to connect, search and obtain these services via the Internet. Featured speakers are U.S. Senator Ben Nighthorse Campbell and Carlos Rainwater, American Red Cross Board of Governors. All interested staff are invited to attend. For more information, contact Cynde Leathers at Ext. 2260.

Classified training fund requests due

Requests for classified training and development funds must be received in Personnel Services by Nov. 22 in order to be considered at the next meeting. - Judy Ward, Ext. 2583

Recreation events coming up

- Turkey Trot Run, Wednesday, Nov. 23, noon, on the track. Prizes in several categories.
 - Bowling Tournament, Wednesday, Nov. 23, 3-4:30 p.m., Emerald Lanes.
- For more information, inquire in PE 204 or call Athletics at Ext. 2215.

Snack bar holiday schedule

The Snack Bar will be open from 10 a.m. to 5 p.m. on Wednesday, Nov. 23.

CLOSURE

Archives and Records Management will be closed the week of Nov. 21. Micrographics will be open.

ADS

UTILITY TRAILER FOR SALE: Rough 55-56 Chev pick-up chassis, new tires with spare, new wiring. \$125. Anne Bacon, Instructional Computing, Ext. 2065, or Jim Bacon at 896-3881.

HAND MADE ANGELS for sale. Cute Christmas decorations or gifts. Come to Instructional Services to see or call Sherry Suchanek at Ext. 2308. I will take orders for more.

UPRIGHT PIANO for sale. Good working condition. Good, mellow tone. \$275. Fred Meyer, Business Dept., Ext. 2221.

FOR SALE: Contemporary three-cushion sofa by Alan White. Beige tones with dark brown warp threads for a "tweedy-checked" effect. (See pillow in my office.) Purchased three years ago from M. Jacobs Furniture. \$275 OBO. Bob Boettcher, Science, Ext. 2446 or home 683-4918.

THANKSGIVING DRAWING at the Bookstore, Nov. 22, 2 p.m. Enter now to win a GE clock radio. One entry per person per day.

BRITAIN, IRELAND, WALES, SCOTLAND. 16-day EF education tour. Departing June 20. \$2,169 student and \$2,411 adult (25+), includes

round trip airfare from Portland, good hotels with private facilities, continental breakfast and dinner daily, and fully guided tour. Escorted by Sharon Thomas, English instructor. Info meeting and application forms will be offered Monday, Nov. 21, 3 p.m., CEN 468, English Dept. staff lounge. Application deadline is March 22. Bring a friend to the meeting and be prepared to make an \$85 deposit (part of above fee) to reserve space.

FOR SALE: 1980 TOYOTA TERCEL, good parts car, needs new engine, 2 extra spare tires included for \$200; also oil-filled electric heater, used only 1 year, \$25. Call Cathie Reschke, Disability Services, Ext. 2059; or 942-5972 eves.

FOR SALE: ENTERTAINMENT CENTER, beautiful cherrywood finish, triangular shape custom-built for a corner but never used, cabinet doors open to adjustable shelving, 52" high, two sides 37-1/2", 53" across face; TV opening is 21-1/4" high x 31-1/2" wide. Sacrifice for \$375. Miriam Thompson, Student Services, Ext. 2315.

RESPONSIBLE MALE STUDENT looking for house sitting situation. Prefers 2 month minimum. Call Ann Clark, IT, Ext. 2382, leave message.

THE DAILY

STAFF: Editor is Joan Aschim, Ext. 2591; Assistant Editor is Angela Miller, Ext. 2268.

SCHEDULE: The Daily publishes Mondays, Tuesdays, Wednesdays, and Thursdays during fall, winter and spring terms, except Tuesdays only during term breaks; and Tuesdays only during summer.

SUBMISSIONS: Include first and last name, department, and extension number. Submit Mac or IBM 3-1/2" disks, any program, when possible. Send via intercampus mail; deliver to the in-basket outside ADM 210; E-Mail to Joan Aschim; Internet to aschim@edlane.lane.edu; fax to 744-3970; or mail to The Daily, Lane Community College, 4000 E. 30th Ave., Eugene, OR 97405.

DEADLINE: Noon of the day prior to publication. Next-day placement is attempted but cannot be guaranteed. All items will be run once and repeated if space permits. Priority will be given to new items. Ads will be run twice; for repeat placement, notify The Daily; observe six times per term limit. All items subject to editing for brevity and Associated Press style.

The Daily

Published for the staff of Lane Community College

747-4501, ext. 2591

Monday, November 21, 1994

Edited by Joan Aschim

This week

- Women's Program brown bag lunch, today, 12-1 p.m., Boardroom with guest speaker Diane Abu-Jaber.
- Teleconference: "Caring, Compassion, and Education: American Indians/Alaska Natives Living With HIV/AIDS," Tuesday, November 22, 11 a.m.-12:30 p.m., CEN 10.
- Thanksgiving holiday closure, Thursday and Friday, Nov. 24 and 25.

Workplace training project launched

Lane and four business partners on Thursday announced a \$1.1 million three-year project to provide customized training in basic workplace skills for employees at Newood Display Fixture Manufacturing Company, PWPipe, The Springfield Group (Springfield Forest Products), and Staff Management Associates. About 225 workers will be offered a chance to participate in the project, including temporary employees.

Project funding is provided by a \$793,400 grant from the U.S. Department of Education and by \$316,600 in matching support from the partners. The grant is the only one in Oregon of 46 projects funded nationwide in 27 states and the only one to include training for temporary workers.

Lane will work with each business to design curricula and will conduct training as needed in math, language, reasoning, problem solving, and teamwork skills. The training will help workers keep pace with technological changes in their jobs and will help the businesses be more competitive. Project director is Patti Lake and project coordinator is Elaine Pray.

Maricopa passes bond measure

The Maricopa Community College District in Arizona passed a \$385 million capital bond measure on Nov. 8 with a 62.5 percent "yes" vote from county taxpayers. The district has 10 campuses and a credit headcount enrollment of 89,735.

Quinn rates Lane audiences the best

Many thanks to those who went out of their way to help bring Daniel Quinn, author of *Ishmael* and *Providence* to campus on Nov. 10. Forum 308 was not quite full for the 11:30 a.m. presentation, and filled to overflowing for the evening session. Readers of his works came from as far away as Florence, Coos Bay, Yachats, Ashland, Corvallis, Salem, Portland, and Vancouver WA. Daniel was delighted and said the next day that of his nationwide appearances since 1992, the LCC audiences seemed the best informed, asked the toughest questions, gave him the warmest welcome, and made the most thought-provoking and off-the-wall comments.

Special thanks to Vicki Hamar and Joy Locke, Bookstore; Cindi Farmer, Media Arts & Technology; Phil Powers, Audiovisual Services; Chuck Reid, Campus Services; Shirley Nagy, Printing/Graphics; Alan Siporin, KLCC; Wendy Westfall, Security; Melanie Brown-Carey, Curriculum/Scheduling; Mary Forestieri, JoAnne McGillivray and Cynthia Zorich, English Foreign Language & Speech; Addie Lou Willis, Sally Wilson and Ron Mitchell, Social Science; Angela Miller and Joan Aschim, Institutional Advancement; Julie Aspinwall-Lamberts, Research Planning & Evaluation; and Marianne Kimball and Jim Ellison, Instructional Services. - Jerome Garger, English Foreign Language & Speech/Social Science

Staff who find jobs for students invited to meeting

People who have the responsibility of finding jobs for Lane students are asked to come to the Downtown Center, Room 204, on Tuesday, Nov. 29, at 11:30 a.m. We are meeting for coffee and to create a common support network. Call Susan Matthews, Specialized Employment Services, Ext. 2102 or 726-3959 for more information.

Native American art displayed; reception scheduled

The Women's Center and the Native American Student Association are hosting an exhibit of Native American art and cultural artifacts in CEN 213 today through Dec. 9. A reception for the artists will be held on Tuesday, Nov. 22, from 3-4 p.m. Everyone's invited.

Classified training fund requests due

Requests for classified training and development funds must be received in Personnel Services by Nov. 22 in order to be considered at the next meeting. - Judy Ward, Ext. 2583

Last chance for flu shots

Flu shots are available through Wednesday in Student Health Services. The cost is \$8. Call Ext. 2665 for an appointment.

This week's Renaissance menu

The Renaissance Room serves lunch Tuesday and Wednesday this week. The menu: tomato bull, cream of celery soup, chicken chasseur with peas and carrots, red snapper with pecans, and bread pudding with bourbon sauce. Call Ext. 2697 for reservations.

Campus Ministry launches annual fund drive

Campus Ministry needs to raise \$30,000 to maintain services to students and staff. About \$6,000 already has been raised. To help, call Jim Dieringer at Ext. 2850. He would be happy to speak at department meetings about Campus Ministry and what it does.

CLOSURES

- Archives and Records Management closed this week. Micrographics open.
- Snack Bar open from 10 a.m. to 5 p.m. on Wednesday, Nov. 23.
- The Daily will not publish on Monday, Nov. 28.


JOBS

Open to current LCC bargaining unit employees: Tech Prep Liaison/College High, from 1/3/95-5/31/95, continuation of position dependent on funding, closes 11/30/94.

ADS

Come to Our Pow-Wow

The Native American Student Association invites you and your family to join us for our 4th annual student pow-wow.



Saturday, December 3, 1-8 p.m.
Gymnasium

- Drumming • Ceremonial and Participative Dances
- Fry Bread and Fry Bread Tacos for sale
- Native American Arts and Crafts
- Free admission • No drugs or alcohol

For information, call Frank Merrill, 747-4501, Ext. 2238.

LANE
COMMUNITY
COLLEGE

HOLIDAY ART SALE, Dec. 2, 4-7 p.m. & Dec. 3, 10 a.m.-4 p.m., 4270 North Shasta Loop. Porcelain items, ornaments, paintings, t-shirts, fused glass, paper bowls, fimo jewelry & figures. Original work by Cheryl Kempner (Study Skills) and Lisa Emmerich.

WATERCOLOR ART SALE by students and staff of the Art and Applied Design Dept., Nov. 29-30, cafeteria, 9 a.m.-2 p.m. each day.

HAND MADE ANGELS for sale. Cute Christmas decorations or gifts. Come to Instructional Services to see or call Sherry Suchanek at Ext. 2308. I will take orders for more.

ADVENT MINI HI-FI SPEAKERS for sale, with wall brackets, used only a few months, \$75 for the pair. Call 342-5217. Sharon Mastin, BEC, Ext. 2992.

WASHER/DRYER for sale. Kenmore heavy duty washing machine and Whirlpool Imperial 80 dryer, both white. \$125 each or \$200 for both. Work great! Bridget McDonagh, Personnel, Ext. 2847, or evenings 485-0977.

UTILITY TRAILER FOR SALE: Rough 55-56 Chev pick-up chassis, new tires with spare, new wiring. \$125. Anne Bacon, Instructional Computing, Ext. 2065, or Jim Bacon at 896-3881.

UPRIGHT PIANO for sale. Good working condition. Good, mellow tone. \$275. Fred Meyer, Business Dept., Ext. 2221.

THANKSGIVING DRAWING at the Bookstore, Nov. 22, 2 p.m. Enter now to win a GE clock radio. One entry per person per day.

THE DAILY

STAFF: Editor is Joan Aschim, Ext. 2591; Assistant Editor is Angela Miller, Ext. 2268.

SCHEDULE: The Daily publishes Mondays, Tuesdays, Wednesdays, and Thursdays during fall, winter and spring terms, except Tuesdays only during term breaks; and Tuesdays only during summer.

SUBMISSIONS: Include first and last name, department, and extension number. Submit Mac or IBM 3-1/2" disks, any program, when possible. Send via intercampus mail; deliver to the in-basket outside ADM 210; E-Mail to Joan Aschim; Internet to aschim@edlane.lane.edu; fax to 744-3970; or mail to The Daily, Lane Community College, 4000 E. 30th Ave., Eugene, OR 97405.

DEADLINE: Noon of the day prior to publication. Next-day placement is attempted but cannot be guaranteed. All items will be run once and repeated if space permits. Priority will be given to new items. Ads will be run twice; for repeat placement, notify The Daily; observe six times per term limit. All items subject to editing for brevity and Associated Press style.

The Daily

Published for the staff of Lane Community College

747-4501, ext. 2591

Tuesday, November 22, 1994

Edited by Joan Aschim

Today:

- Reception for Native American artists, Women's Center, 3-4 p.m. Everyone's invited. The artists' works will be on display in the Center through Dec. 9.
- Thanksgiving drawing, Bookstore, 2 p.m.

Winter class schedules arriving soon

Winter class schedules should arrive in homes by December 1 and will be distributed on campus at about the same time. Department copies went in the mail on Monday. Limited numbers are available in my office. - Susan Sutton, Ext. 2593, ADM 210

United Way contributions mounting

We are well over the halfway point in our goal to break \$21,000 this year. However, there are only two weeks remaining in the campaign. If you haven't received a gift card, please call me at Ext. 2208, and if you haven't contributed yet, please consider it. If possible, send your completed claim form to me in Purchasing Services by Thanksgiving - Lloyd Rain, Ext. 2208

Student concerts to be presented

Performing Arts presents four music concerts as part of the fall term student ensemble concert series. Each concert will be held in the main theater at 8 p.m. For tickets, call Ext. 2202 weekday afternoons. The calendar:

- Tuesday, Nov. 29: Lane Chamber Orchestra, directed by Ron Bertucci, featuring work by Mozart, Handel and others.
- Thursday, Dec. 1, Lane Chorus and Lane Chamber Choir, directed by Kimberly DeMoss, featuring traditional choral music, holiday selections, American and Hungarian folk songs, and Renaissance chamber music. The groups will join for an arrangement of Peter J. Wilhousky's *Carol of the Bells*.
- Tuesday, Dec. 6: Lane Symphonic Band, directed by Ron Bertucci, featuring music by Clifton Williams, Cesar Franck, Leonard Bernstein and others; and the Lane Percussion Ensemble directed by Brian Scott, featuring a piece by Eugene percussionist Alan Keown and other works.
- Thursday, Dec. 8: Lane Vocal Jazz Ensemble "Spectrum," directed by Kimberly DeMoss, featuring arrangements by Kenny Krantz, Gene Skinner, Dave Bardruhn and Dave Cross; and the Lane Jazz Band, directed by Ron Bertucci, featuring music by Frank Foster, Count Basie, Frank Mantooth, Thad Jones and others.

Staff who find jobs for students invited to meeting

People who have the responsibility of finding jobs for Lane students are asked to come to the Downtown Center, Room 204, on Tuesday, Nov. 29, at 11:30 a.m. We are meeting for coffee and to create a common support network. Call Susan Matthews, Specialized Employment Services, Ext. 2102 or 726-3959 for more information.

Student loan exit interviews required

Federal regulations require that students receiving a Federal Stafford Loan or a Federal SLS Loan while attending Lane must attend an exit interview during their last term of attendance. The exit interview outlines financial planning, disclosure statements, repayment procedures, how to correspond with the lender, secondary markets, loan consolidation, options for making payments, and the consequences of default. Exit interviews are scheduled for Tuesday, Nov. 29 at 10 a.m., 2 p.m. and 6 p.m.; and Wednesday, Nov. 30 at 9 a.m., 1 p.m. and 4 p.m., all in HEA 105. The 50-minute sessions will begin on time and latecomers cannot be admitted.

Recreation events coming up

- Turkey Trot Run, Wednesday, Nov. 23, noon, on the track. Prizes in several categories.
 - Bowling Tournament, Wednesday, Nov. 23, 3-4:30 p.m., Emerald Lanes.
- For more information, inquire in PE 204 or call Athletics at Ext. 2215.

Last chance for flu shots

Flu shots are available through Wednesday in Student Health Services. The cost is \$8. Call Ext. 2665 for an appointment.

CLOSURES

- Archives and Records Management closed this week. Micrographics open.
- LCC Thanksgiving holiday closure, Thursday and Friday, Nov. 24 and 25.
- Snack Bar open from 10 a.m. to 5 p.m. on Wednesday, Nov. 23.
- The Daily will not publish on Monday, Nov. 28.
- Purchasing Services will be closed on Wednesday, Nov. 30, from noon-2 p.m., for in-service.

JOBS

Open to current LCC bargaining unit employees: Project Specialist I, Social Science Dept., closes 12/5/94.

ADS

IF YOU MADE A COPY OF "The Infamous Dorothy Parker" on the A&E channel on 11-17-94, I'd like to see it. Please contact Jerome Garger, EFL&S, Ext. 2162.

MY SON, IRIK, BOUGHT A NEW CAR and needs to sell a 1983 Nissan Sentra, 155K, needs some TLC, nice Sony 50 watt pullout deck, have some records. \$650 (willing to negotiate). Contact Linda Myers (Co-op Ed) at home and ask for Irik, 344-6483, or leave a message.

POSTERS, CALENDARS, NOTES, mugs, Post-It Notes. 24-page catalog of ideas to brighten your workspace, child's room, or gift list. Your purchase supports the free lending library of assistive devices in the TALN Center. Come by IND 207 or call Ext. 2149 for a closer look. Order now! - Leigh Alice Petty, Exts. 2148/2149.

WONDERFUL CHRISTMAS OR BIRTHDAY GIFTS: Top-of-the-line limited edition prints of scratchboard art. 100% acid-free rag paper, foam core backed and shrink wrapped. Three subjects: Cheyenne warrior (15"x18"), prairie dogs (15"x18"), and owl, 7"x8". See in Family & Health Careers, HEA 241. Phyllis Witham, Ext. 2069.

HOLIDAY ART SALE, Dec. 2, 4-7 p.m. & Dec. 3, 10 a.m.-4 p.m., 4270 North Shasta Loop. Porcelain items, ornaments, paintings, t-shirts, fused glass, paper bowls, fimo jewelry & figures. Original work by Cheryl Kempner (Study Skills) and Lisa Emmerich.

WATERCOLOR ART SALE by students and staff of the Art and Applied Design Dept., Nov. 29-30, cafeteria, 9 a.m.-2 p.m. each day.

HAND MADE ANGELS for sale. Cute Christmas decorations or gifts. Come to Instructional Services to see or call Sherry Suchanek at Ext. 2308. I will take orders for more.

ADVENT MINI HI-FI SPEAKERS for sale, with wall brackets, used only a few months, \$75 for the pair. Call 342-5217. Sharon Mastin, BEC, Ext. 2992.

WASHER/DRYER for sale. Kenmore heavy duty washing machine and Whirlpool Imperial 80 dryer, both white. \$125 each or \$200 for both. Work great! Bridget McDonagh, Personnel, Ext. 2847, or evenings 485-0977.

UTILITY TRAILER FOR SALE: Rough 55-56 Chev pick-up chassis, new tires with spare, new wiring. \$125. Anne Bacon, Instructional Computing, Ext. 2065, or Jim Bacon at 896-3881.

UPRIGHT PIANO for sale. Good working condition. Good, mellow tone. \$275. Fred Meyer, Business Dept., Ext. 2221.

FREE YOURSELF FROM THE CROWDS AND HASSLES this holiday season, or any gift-giving occasion, with Amagifts. The recipient of an Amagift chooses one of more than 40 quality selections, fills out the postpaid card and drops it in the mail. What could be easier? For details call Andy McClure at 342-2505, or CS, Ext. 2578.

FOR SALE: ENTERTAINMENT CENTER, beautiful cherrywood finish, triangular shape custom-built for a corner but never used, cabinet doors open to adjustable shelving, 52" high, two sides 37-1/2", 53" across face; TV opening is 21-1/4" high x 31-1/2" wide. Sacrifice for \$375. Miriam Thompson, Student Services, Ext. 2315.

AMERICAN RED CROSS night for Eugene Ballet's "Nutcracker" at the Hult Center is Thursday, Dec. 9, at 8 p.m. Interested persons may contact the Lane County Chapter of the American Red Cross at 344-5244, or Linda Fossen, Student Services, at Ext. 2315, by Nov. 28 for tickets and information.

ROOM AVAILABLE in duplex apartment for short term stay. Fully furnished, a/c, color television, fully equipped kitchen, balcony with view. Near downtown and Amazon Park, on the busline. This second floor apartment room is on a quiet, tree lined street. Available for one night stay or longer, single person or couple. Call Adeena Sarah, MSW, LMT, 686-2822. - Patsy Raney, Women's Ctr.

THE DAILY

STAFF: Editor is Joan Aschim, Ext. 2591; Assistant Editor is Angela Miller, Ext. 2268.

SCHEDULE: The Daily publishes Mondays, Tuesdays, Wednesdays, and Thursdays during fall, winter and spring terms, except Tuesdays only during term breaks; and Tuesdays only during summer.

SUBMISSIONS: Include first and last name, department, and extension number. Submit Mac or IBM 3-1/2" disks, any program, when possible. Send via intercampus mail; deliver to the in-basket outside ADM 210; E-Mail to Joan Aschim; Internet to aschim@edlane.lane.edu; fax to 744-3970; or mail to The Daily, Lane Community College, 4000 E. 30th Ave., Eugene, OR 97405.

DEADLINE: Noon of the day prior to publication. Next-day placement is attempted but cannot be guaranteed. All items will be run once and repeated if space permits. Priority will be given to new items. Ads will be run twice; for repeat placement, notify The Daily; observe six times per term limit. All items subject to editing for brevity and Associated Press style.

The Daily

Published for the staff of Lane Community College

747-4501, ext. 2591

Wednesday, November 23, 1994

Edited by Joan Aschim

Today

- Canceled: Network Task Force meeting. Next meeting: Dec. 14.

Holiday mail procedure announced

Due to the Thanksgiving holiday, main campus staff are asked to bring their outgoing and intercampus mail to the Mailroom on **Monday, Nov. 28**, between 12-3:30 p.m., in lieu of regular morning Mailroom pick up and delivery services. The Downtown Center will receive usual service. Thank you! - Mailroom staff, Ext. 2575

Windows 6.0 basic training offered

Windows 6.0 basic computer training will be offered on Wednesday, Nov. 30, from 3-5:30 p.m. in BUS 202. Jean Geiger is the instructor. Please call Ext. 2149 to reserve your spot for this great opportunity to add to your computer expertise.

Nan Phifer publishes book and article

Nan Phifer, Adult Basic and Secondary Education/Adult High School instructor, has a workbook titled *Writing Your Life: Developing Skills Through Life Story Writing* published by GLENCOE/McGraw-Hill. Phifer also has an article about teaching the novel *Jack* published in the March 1994 *The ALAN Review*, a publication of the National Council of Teachers of English.

Don Metzler receives motorcycle safety award

Don Metzler, motorcycle safety program instructor for Continuing Education, was named "Coordinator of the Year" by the Team Oregon Motorcycle Safety Program sponsored by the Oregon Department of Transportation. The award was presented at the program's annual banquet in Salem on Nov. 12. Team Oregon director of rider education Steve Garets said of Metzler's contributions to the program since 1986, "Don has worked countless hours to assure a highly successful training program at Lane Community College. This program has prospered because of Don's leadership, hustle and dedication to safer cycling." Metzler was selected for the award from among eight site managers statewide. In addition to his motorcycle teaching, Metzler is a teacher associate in the Early Childhood Education program at Lane.

Welcome Teresa Mauser

The Financial Aid Office welcomed Teresa Mauser to the department on Nov. 14. She is the new financial aid specialist. She previously served in College Finance since 1989.

Reno bus trip: What an adventure!

Our Veteran's Day jaunt to the Biggest Little City in the World was a resounding success! While most did leave some deposits to the Nevada economy, all returned with fun memories and new friendships gained. One big winner financially was Janelle Smith, guest of Colleen Cairney, who won \$2,500 playing the slots! Ask Kathy Bates of Family & Health Careers about her birthday ride in a wedding chapel limousine. Anybody for a return trip next year? Start saving those nickels! - Gloria Jarvis, Instructional Services, Ext 2308.

If you tire of turkey, try the Renaissance Room

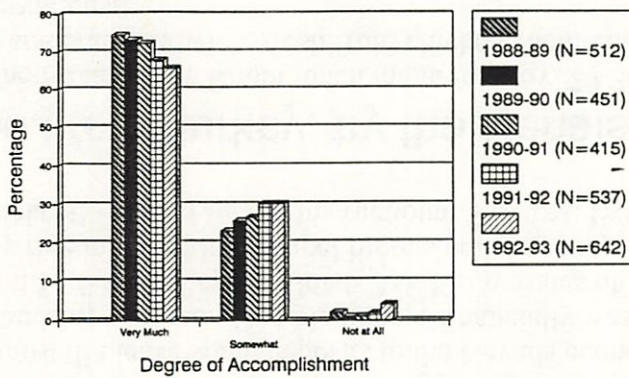
The Renaissance Room lunch menu for Nov. 29-30 features French onion soup, Oregon shrimp and crab sandwich, fresh fruit, chicken enchiladas and chocolate parfait. Call Ext. 2697 for reservations.

Campus Ministry launches annual fund drive

Campus Ministry needs to raise \$30,000 to maintain services to students and staff. About \$6,000 already has been raised. To help, call Jim Dieringer at Ext. 2850. He would be happy to speak at department meetings about Campus Ministry and what it does.

KEY BENCHMARKS

Former Students Indicating the Degree To Which They Accomplished Their Goals



✓ In all years, about 75% of the graduates and over 50% of the "no formal award completers" reported they "very much" achieved their goals at Lane.

✓ No formal award completers tend to be less satisfied with their goal attainment. In 1992-93, about 7% said they did not meet their goals (as opposed to approximately 2% of the graduates).

Prepared by Research and Planning, Oct. 24, 1994

Omnitek "hot line" available

Omnitek has inaugurated a new service "hot line" to provide technical information or service on Omnitek computers. The number is 342-7438.

CLOSURES

- Archives closed today.
- Micrographics open.
- LCC closed for Thanksgiving, Thursday and Friday, Nov. 24 and 25.
- Snack Bar open today from 10 a.m.-5 p.m.
- The Daily will not publish on Monday, Nov. 28.
- Purchasing Services closed today from noon-2 p.m., for in-service.

ADS

ADVENT MINI HI-FI SPEAKERS for sale, with wall brackets, used only a few months, \$75 for the pair. Call 342-5217. Sharon Mastin, BEC, Ext. 2992.

TEAK ENTERTAINMENT BENCH for sale to best offer. Size 28"h, 40"w, 18"d. Shelves for tuner, CD player, tape deck, turn table and record storage. Best offer through Dec. 2. Jim Ellison, Instructional Services, Ext. 2307.

WE NEED TWO MORE ROSE BOWL TICKETS so we can take Grandma and all the kids. If you are not using your ticket allotment, please call. Ask for Susan or Larry. Susan Sutton, Institutional Advancement, Ext. 2593. Home, 485-4053.

4 STUDDERED TIRES for sale. Subaru wheels, four-bolt models. P165/80R13 tires are 2 winters and 5,000 miles old. Wheels are 1 year old. \$160. Cliff Trolin, Social Science, Ext. 2427, or 937-3607.

1986 PORSCHE 944 for sale. Excellent condition, under 40,000 miles, leather interior, sun roof, air conditioning. A one-owner car (my husband's). He's asking \$9,500. If interested, call Ginny Reich, EFL&S, Ext. 2426, or 686-8188 eves.

IF YOU MADE A COPY OF "The Infamous Dorothy Parker" on the A&E channel on 11-17-94, I'd like to see it. Please contact Jerome Garger, EFL&S, Ext. 2162.

MY SON, IRIK, BOUGHT A NEW CAR and needs to sell a 1983 Nissan Sentra, 155K, needs some TLC, nice Sony 50 watt pullout deck, have some records. \$650 (willing to negotiate). Contact Linda Myers (Co-op Ed) at home and ask for Irik, 344-6483, or leave a message.

WASHER/DRYER for sale. Kenmore heavy duty washing machine and Whirlpool Imperial 80 dryer, both white. \$125 each or \$200 for both. Work great! Bridget McDonagh, Personnel, Ext. 2847, or evenings 485-0977.

UTILITY TRAILER FOR SALE: Rough 55-56 Chev pick-up chassis, new tires with spare, new wiring. \$125. Anne Bacon, Instructional Computing, Ext. 2065, or Jim Bacon at 896-3881.

Come to Our Pow-Wow

The Native American Student Association invites you and your family to join us for our 4th annual student pow-wow.



Saturday, December 3, 1-8 p.m.
Gymnasium

- Drumming • Ceremonial and Participative Dances
- Fry Bread and Fry Bread Tacos for sale
- Native American Arts and Crafts
- Free admission • No drugs or alcohol

For information, call Frank Merrill, 747-4501, Ext. 2238.

LANE
COMMUNITY
COLLEGE

THE DAILY

STAFF: Editor is Joan Aschim, Ext. 2591; Assistant Editor is Angela Miller, Ext. 2268.

SCHEDULE: The Daily publishes Mondays, Tuesdays, Wednesdays, and Thursdays during fall, winter and spring terms, except Tuesdays only during term breaks; and Tuesdays only during summer.

SUBMISSIONS: Include first and last name, department, and extension number. Submit Mac or IBM 3-1/2" disks, any program, when possible. Send via intercampus mail; deliver to the in-basket outside ADM 210; E-Mail to Joan Aschim; Internet to aschim@edlane.lane.edu; fax to 744-3970; or mail to The Daily, Lane Community College, 4000 E. 30th Ave., Eugene, OR 97405.

DEADLINE: Noon of the day prior to publication. Next-day placement is attempted but cannot be guaranteed. All items will be run once and repeated if space permits. Priority will be given to new items. Ads will be run twice; for repeat placement, notify The Daily; observe six times per term limit. All items subject to editing for brevity and Associated Press style.

The Daily

Published for the staff of Lane Community College

747-4501, ext. 2591

Tuesday, November 29, 1994

Edited by Angela Miller

This week:

- Watercolor art sale by students and staff of the Art and Applied Design Dept., today and Wednesday, Nov. 30, 9 a.m.-2 p.m., in the cafeteria.
- Windows basic computer training, Wednesday, Nov. 30, 3-5:30 p.m., BUS 202. For your reservation, call Ext. 2149.
- Purchasing Services will be closed on Wednesday, Nov. 30, from noon-2 p.m., for in-service.
- Legislative Action Team meeting, Thursday, Dec. 1, 7:30-9 a.m., PE 205.
- Native American Student Association Powwow, Saturday, Dec. 3, 1-11 p.m., gymnasium.

Classified and management open enrollment

Classified and management employees interested in changing from one medical insurance plan to another or adding a dependent to medical/vision or dental insurance coverage may do so during open enrollment from Nov. 1 to Dec. 15. New enrollment forms, as well as new insurance rate charts may be picked up at the forms rack in Personnel Services. All changes and additions received by Carol Goldsberry in Personnel Services by 5 p.m., Dec. 15 will be effective Jan. 1, 1995. Representatives from Blue Cross/Blue Shield and HMO Oregon will be available to answer any coverage questions on Dec. 6, from 1-4 p.m., in PE 205.

OSBDC receives donation

The Oregon Small Business Development Center Network is the recipient of a \$13,000 software donation from DataMerge, Inc., a Colorado-based software firm. "The Financing Sources Databank" will allow Small Business Development Centers throughout Oregon to tap into a database of alternative lenders and search for possible sources of capital for business clients. Our thanks to Jane Johnson of Lane's Business Development Center who made the initial contact with DataMerge and informed our office of the opportunity. - Barbara Cardwell, OSBDCN

Peace Pilgrim II shares experiences

The original Peace Pilgrim from Philadelphia walked throughout the United States for 28 years delivering her peace message. Peace Pilgrim II has recently returned to the Northwest from travels in 28 states. Media coverage of his message included a "Voice of America" interview broadcast in 40 languages. He will share his adventures, news of his forthcoming book *Enjoying the Journey*, and some principles of life in a talk titled "Seeking Happiness" in Jerome Garger's Peace and Conflict Studies class on Thursday, Dec. 1, from 12:15-12:45 p.m. in CEN 401. Guests are welcome.

Faculty evaluation questionnaire tips

When students complete the "Faculty Evaluation by Students" questionnaire, remind them that if a question does not apply, they should leave it blank. Also remind them to turn the page for the written questions. - Beth Naylor, Ext. 2533

TTT learns about the information highway

Over 20 faculty members learned how to enter the fast lane of the information highway at our second Teachers Talking about Teaching on Nov. 15. Bob Barber of Computer Information Technology gave participants an overview of the Internet, and Jeff Osanka of the English Department answered specific questions about its uses with on-line demonstrations. A handout from the presentation on the Internet is available in the Library at the reserve desk by asking for the TTT materials. For more information about the presentation and future TTT offerings, contact Pat McLaughlin, Ext. 2419.

Notice to part-time instructors

Part-time instructors covered by the HMO Oregon medical plan should have received an employee benefits booklet describing the benefits through intercampus mail. If you did not receive a copy or have questions, contact Carol Goldsberry in Personnel Services, Ext. 2590.

ADS

WE NEED TWO MORE ROSE BOWL

TICKETS so we can take Grandma and all the kids. If you are not using your ticket allotment, please call. Ask for Susan or Larry. Susan Sutton, Institutional Advancement, Ext. 2593. Home, 485-4053.

WANTED: Rose Bowl ticket vouchers! If you have Rose Bowl tickets you're not planning to use, we'll pay you fair price for them. Call Judith Gabriel, College High, Ext. 2699 or 344-2754.

IF THERE IS ANYONE with access to Rose Bowl game tickets not using them, I have family that would like to go. Contact Carol Beckley, College Operations, Ext. 2363.

FREE TO A GOOD HOME: One king size bed (frame, mattress, box springs) and one ironing board. Dave Sherman, E,FL&S, 344-3890.

NEW SHIPMENTS have arrived from Guatemala for Christmas. Inspiring gift ideas for the holiday season. Enormous variety. All hand picked for their quality and aesthetic appeal featuring hand carved and painted santos and angels. come early for best selection. 2198 Arthur Street in west Eugene, Saturdays, Dec. 3 & 10, 10 a.m.-5 p.m. and Sundays, Dec. 4 & 11, 12-4 p.m. For more info, call 485-2085. Joan Aschim, IA, Ext. 2591.

HOLIDAY ART SALE THIS WEEKEND. Cheryl Kempner is hosting the 3rd annual holiday sale at her home Friday, Dec. 2, 4-7 p.m. and Saturday, Dec. 3, 10 a.m.-4 p.m. Fourteen artists will offer porcelain vases, jewelry, bowls, fused glass items, ornaments, pillows, wreaths, and more. Call for a map to 4270 N. Shasta Loop. Cheryl Kempner, Study Skills, Ext. 2844.

FOR SALE: KENWOOD AM/FM stereo/tuner/amplifier...Pioneer belt drive turntable, two Transaudio speakers. All for \$50. Sold only as a set. Tools for sale: 7-1/4" Skilsaw, 1-3/4 hp., \$15. Skil 3/4 hp sander with 3"x18" belt, \$10. Black & Decker Dustbuster Plus for indoor use, \$5. Other for sale: Little Tykes red sleigh with pull rope, \$15. Titan electrical floor heater, 1300-1500 watts with automatic thermostat, \$10. Two 32 gal. trash cans, both like new, \$5 each. Director's type rocking chair made by hand in Costa Rica, leather and wood, \$45. King size teak bed (from ScanDesign) and mattress; slight water damage, cosmetic only, \$250. Buck Arbuckle, E,FL&S, Ext. 2141 or 484-1743 (home).

DUCKS VS. BEAVERS. I would like to know if anyone taped the ducks vs. Beavers game. If so I would like to borrow it or rent it, as some of my family missed it due to work and would like to see it. Mary Anderson, Com Svcs., Ext. 2865

FOR SALE: 2 pair mens pants, one black, one navy blue, brand new, unhemmed. Will sell each for \$28. Victorian style deep blue swag lamp, \$25. 1984 toyota supra. Manual transmission, electric sunroof, A/C, electric door locks, radar, good Bridgestone tires, clean and well maintained, \$4950. John Bredesen, KLCC, Ext. 2478 or Carolyn Spector, 485-6869.

TEAK ENTERTAINMENT BENCH for sale to best offer. Size 28"h, 40"w, 18"d. Shelves for tuner, CD player, tape deck, turn table and record storage. Best offer through Dec. 2. Jim Ellison, Instructional Services, Ext. 2307.

FOR SALE: 1979 FORD Club Wagon, 3/4 ton, luxury model. Excellent vehicle. Seats five plus. Hauls more than you need. 120,000 miles. New tires, new carburetor. Runs beautifully. \$4,500. Call Liz Coleman, ABSE, Ext. 2919 or 683-4384.

4 STUDDER TIRES for sale. Subaru wheels, four-bolt model. P165/80R13 tires are 2 winters and 5,000 miles old. Wheels are 1 yr. old. \$160. Clif Trolin, Soc Sci, Ext. 2427, or 937-3607.

1986 PORSCHE 944 for sale. Excellent condition, under 40,000 miles, leather interior, sun roof, air conditioning. A one-owner car (my husband's). Asking \$9,500. Call Ginny Reich, E,FL&S, Ext. 2426, or 686-8188 eves.

FREE YOURSELF FROM THE CROWDS AND HASSLES this holiday season, or any gift-giving occasion, with Amagifts. The recipient of an Amagift chooses one of more than 40 quality selections, fills out the postpaid card and drops it in the mail. What could be easier? For details call Andy McClure at 342-2505, or Campus Services, Ext. 2578.

WONDERFUL CHRISTMAS OR BIRTHDAY GIFTS: Top-of-the-line limited edition prints of scratchboard art. 100% acid-free rag paper, foam core backed and shrink wrapped. Three subjects: Cheyenne warrior (15"x18"), prairie dogs (15"x18", and owl, 7"x8". See in Family & Health Careers, HEA 241. Phyllis Witham, Ext. 2069.

THE DAILY

CONTACTS: Editor: Joan Aschim, Ext. 2591. Assistant Editor: Angela Miller, Ext. 2268.

SCHEDULE: The Daily publishes Mondays, Tuesdays, Wednesdays, and Thursdays during fall, winter and spring terms, except Tuesdays only during term breaks; and Tuesdays only during summer.

SUBMISSIONS: Include first and last name, department, and extension number. Submit Mac or IBM 3-1/2" disks, any program, when possible. Send via intercampus mail; deliver to the in-basket outside ADM 210; E-Mail to Joan Aschim; Internet to aschim@edlane.lane.edu; fax to 744-3970; or mail to The Daily, Lane Community College, 4000 E. 30th Ave., Eugene, OR 97405.

DEADLINE: Noon of the day prior to publication. Next-day placement is attempted but cannot be guaranteed. All items will be run once and repeated if space permits. Priority will be given to new items. Ads will be run twice; for

The Daily

Published for the staff of Lane Community College

747-4501, ext. 2591

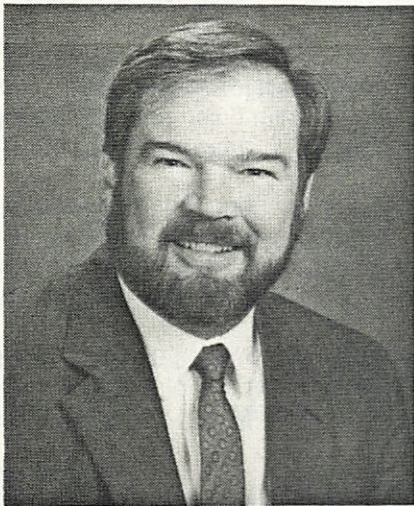
Wednesday, November 30, 1994

Edited by Joan Aschim

Today

- Purchasing Services closed from noon-2 p.m. today for in-service.
- Watercolor art sale, 9 a.m.- 2p.m., cafeteria.
- Windows 6.0 training, 3-5:30 p.m., BUS 202.

Moskus to chair economic development consortium



President Jerry Moskus has been elected to a one-year term as chair of the Southern Willamette Research Corridor. SWRC is an economic development consortium whose 44 members represent community colleges, universities, government agencies and private businesses in the Southern Willamette Valley.

Moskus will lead the consortium in a transition from working with state government and the Legislature to working with private industry and business. "We hope to be working with companies like Sony, Symantec, Hewlett-Packard, and others," says Moskus. He believes that community colleges' successful history of partnering with business and industry to provide workforce training and development lends valuable expertise to the consortium.

Moskus will challenge the group to expand its cooperative energies beyond economic development. He would like to see a job search network for "trailing spouses" of recruited employees, improvements in regional affirmative action, more development of instructional technologies, and acquisition of outside funding for economic development activities.

The SWRC executive committee includes Moskus, vice chair Dave Frohnmayer, University of Oregon president; John Byrne, Oregon State University president; Jon Carnahan, Linn-Benton Community College president; Steve Bryant, Albany city manager; and Mike Gleason, Eugene city manager.

Meetings

- Legislative Action Team, Thursday, Dec. 1, 7:30-9 a.m., *BOARDROOM (NOT PE 205)*.
- Future Faculty Task Force, Thursday, Dec. 1, 8:30-10 a.m., BUS 107.
- Instructional Support Staff, Wednesday, Dec. 1, 11:30 a.m.-12:30 p.m., PE 205.

Legislative internships orientations to be held

Lane and the U of O will hold a joint legislative internship orientation for all students wishing to intern with state legislators during the next legislative session in Salem. The orientation will be held on Friday, Dec. 2, from 1-4 p.m., at the U of O, Erb Memorial Union, Ben Linder Room. Internship applications and information are available from Steve Candee, Ext. 2188, CEN 435.

In memory

Campus Services retired plumber Gene McNeese passed away on Sunday night, Nov. 27, from cancer. His funeral will be at the First Christian Church, 1166 Oak Street in Eugene, on Friday, Dec. 2, at 11 a.m. Gene retired from Lane in December 1982.

Videoconference: Adult numeracy instruction

A videoconference, "Adult Numeracy Instruction: A New Approach," will be held Thursday, Dec. 1, from 10 a.m.-noon, in CEN 10. It's free. The event is designed primarily for adult literacy educators who are teaching math and want to enhance their math teaching skills. All interested staff are invited to attend. For more information, contact Cynde Leathers at Ext. 2260.

Alan Siporin to address students

Alan Siporin, broadcast journalist for KLCC and National Public Radio, will speak in Steve Candee's American Government class on Monday, Dec. 5, from 10-11 a.m. and 11 a.m.-noon in CEN 402. Guests are welcome but seating is limited.

Campus Ministry gives to needy student families

Campus Ministry's "Sharing is Caring" program works to help student families have a nice Christmas. If your department would like to sponsor a family for Christmas, or if you know of a family that you would like to have sponsored, contact Marna Crawford at Ext. 2813.

ADS

WONDERFUL CHRISTMAS OR BIRTHDAY GIFTS: top-of-the-line limited edition prints of scratchboard art -- 100% acid free rag paper, foam core backed and shrinkwrapped -- three subjects: Cheyenne warrior (15x18"); prairie dogs (15x18"); owl (7x8"). See in Family & Health Careers, HEA 241. Phyllis Witham, Ext. 2069.

SOLID HARDWOOD 36"x60" oak veneer top table for sale, plus 6 cane-back chairs with natural tone tweed padded seats. Paid \$600 3 years ago, asking \$100. Pat Langan, 343-9642. (College Finance, Ext. 2605).

LONG LASTING NOBLE FIR WREATHS for sale. Includes holly, cones, ornaments, and red velvet bow. Softball fundraiser for daughter. Will deliver to your home while supply lasts. \$15 each. Laura Tamura, President's Office, Ext. 2301.

FREE CHRISTMAS GIFT WRAP at the Bookstore. All Bookstore purchases can be wrapped for free. Donations accepted! All proceeds will provide one or more needy LCC families with holiday assistance.

BAKE SALE, Bookstore, Dec. 12, 8 am.-2 p.m., second floor Center. All proceeds will provide one or more needy LCC families with holiday assistance.

STILL HOPING to find more Rose Bowl tickets. If you are selling two or three, please call. Susan Sutton, IA, Ext. 2593, or home 485-4053.

WANTED: ROSE BOWL TICKET VOUCHERS! If you have Rose Bowl tickets you're not planning to use, we'll pay a fair price for them. Judith Gabriel, College High, Ext. 2699, or 344-2954.

IF THERE'S ANYONE WITH ACCESS to Rose Bowl tickets not using them, I have family that would like to go. Carol Beckley, College Operations, Ext. 2363.

DUCKS VS. BEAVERS. I would like to know if anyone taped the Ducks vs. Beavers game. If so I would like to borrow it or rent it, as some of my family missed it due to work and would like to see it. Mary Anderson, Computer Svcs., Ext. 2865

PUBLIC HOUSING BENEFIT DRAWING tickets for the Housing Authority's Youth Sports Anti-drug

Program, helping to continue the program and provide educational scholarships. Two dollar tickets give you a chance at an autographed 1994 Portland Trailblazer basketball, a \$500 EE Savings Bond, and 17 different gift certificates for places like Penny's, Kidsports, Fred Meyer, and Home Depot. Susan Sutton, IA, Ext. 2593.

FREE TO A GOOD HOME: 1 king-size bed (frame, mattress, box springs) and 1 ironing board. Dave Sherman, EFL&S. Call 344-3890.

FOR SALE: 1979 FORD Club Wagon, 3/4 ton, luxury model. Excellent vehicle. Seats five plus. Hauls more than you need. 120,000 miles. New tires, new carburetor. Runs beautifully. \$4,500. Call Liz Coleman, ABSE, Ext. 2919 or 683-4384.

FOR SALE: 2 PAIR MENS PANTS, 1 black, 1 navy blue, brand new, unhemmed. Will sell each for \$28. Victorian style deep blue SWAG LAMP, \$25. 1984 TOYOTA SUPRA, manual transmission, electric sunroof, A/C, electric door locks, radar, good Bridgestone tires, clean and well maintained, \$4950. John Bredesen, KLCC, Ext. 2478 or Carolyn Spector, 485-6869.

FOR SALE: KENWOOD AM/FM stereo/tuner/amplifier. Pioneer belt drive turntable, two Transaudio speakers. All for \$50. Sold only as a set. TOOLS for sale: 7-1/4" Skilsaw, 1-3/4 hp., \$15. Skil 3/4 hp sander with 3"x18" belt, \$10. Black & Decker Dustbuster Plus for indoor use, \$5. Other for sale: Little Tykes red SLEIGH with pull rope, \$15. Titan electrical floor HEATER, 1300-1500 watts with automatic thermostat, \$10. Two 32 gal. TRASH CANS, both like new, \$5 each. Director's type rocking CHAIR made by hand in Costa Rica, leather and wood, \$45. King size teak BED (from ScanDesign) and mattress; slight water damage, cosmetic only, \$250. Buck Arbuckle, E,FL&S, Ext. 2141 or 484-1743 (home).

FREE YOURSELF FROM THE CROWDS and hassles this holiday season with Amagifts. The recipient of an Amagift chooses one of more than 40 quality selections, fills out the postpaid card and drops it in the mail. What could be easier? For details call Andy McClure at 342-2505, or Campus Services, Ext. 2578.

THE DAILY

STAFF: Editor: Joan Aschim, Ext. 2591. Assistant Editor: Angela Miller, Ext. 2268.

SCHEDULE: The Daily publishes Mondays, Tuesdays, Wednesdays, and Thursdays during fall, winter and spring terms, except Tuesdays only during term breaks; and Tuesdays only during summer.

SUBMISSIONS: Include first and last name, department, and extension number. Submit Mac or IBM 3-1/2" disks, any program, when possible. Send via intercampus mail; deliver to the in-basket outside ADM 210; E-Mail to Joan Aschim; Internet to aschim@edlane.lane.edu; fax to 744-3970; or mail to The Daily, Lane Community College, 4000 E. 30th Ave., Eugene, OR 97405.

DEADLINE: Noon of the day prior to publication. Next-day placement is attempted but cannot be guaranteed. All items will be run once and repeated if space permits. Priority will be given to new items. Ads will be run twice; for repeat placement, notify The Daily; observe six times per term limit. All items subject to editing for brevity and Associated Press style.