

The Daily

Published for the staff of Lane Community College

747-4501, ext. 2591

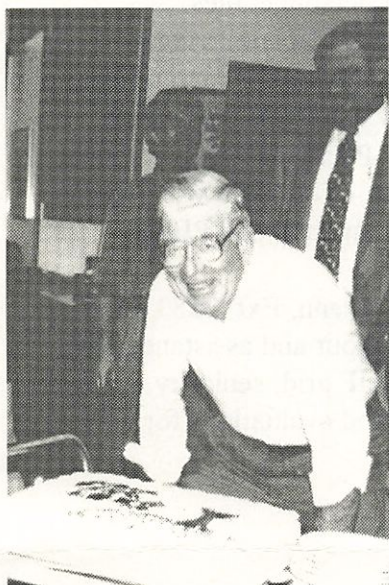
Tuesday, June 27, 1995

Edited by Angela Miller

Tuesday to Tuesday:

- Year-end budget deadlines for today and Friday, June 30. Check your 1994/95 fiscal year-end closing budget calendar.

Board approves budget, hears good bond news



Board members help Jim Pitney celebrate his 75th birthday

Lane's 1995-96 budget was approved by a unanimous vote of the Board of Education at its June 14 meeting. The board also heard from bond underwriter Mike Lewis that bonds approved in the May election were sold on June 7 and should net the college \$42,770,000 million. The college will have three years to complete bond expenditures.

Sale of the bonds was made easier by the excellent bond ratings the college received -- A+ from Standard and Poors and Aa from Moody's. Low interest rates made it possible for the college to pay off the bonds in 14, not 15 years, and at a cost to tax payers of approximately 23 cents, rather than 25 cents, per thousand of valuation. This will save district taxpayers about \$1.3 million over earlier estimates.

In other business, the board:

- Adopted a resolution honoring and thanking Ed King and Sue Prichard for co-chairing the Advocates during the successful bond election campaign;
- Hired GLAS Architectural Group to oversee design and construction of the LCC facility to be built with bond funds in Cottage Grove;
- Approved the hiring of Donna Koechig as the new director of counseling. Koechig has a Ph.D. in education and counseling from the University of Missouri, is a counselor in private practice in Kansas City, Missouri, and also works as an organizational development consultant. She will begin work at Lane November 1;
- Welcomed Adam Young, the new student body president.



FTE formula changes

Effective summer term, the State of Oregon has changed the FTE formula that is used for state reimbursement to all Oregon community colleges. The new formula is: **FTE = contact hours divided by 510**. This simple formula will be used on all courses, including credit courses that previously used credit hours divided by 45. As of July 17, the "mini-damn" (enrollment) report will reflect FTE calculated by this formula. The summer 4th week report will also reflect the use of this formula. Computer Services will be revising FTE calculations for all sessions in 1993-94 and 1994-95 to provide minimal trend data.

Tutoring services available

Tutors are available to assist students in the Writing Center Monday-Thursday from 8 a.m. to 1 p.m. These services are for students from all classes, not just English Department classes. - Sara Baz

Computer workshops open to staff

The following computer workshops are available to interested staff: Windows 6.0 on Wednesday, July 12, from 9 a.m.-noon, in BUS 202 with instructor Brenda Jennings; and Advanced Mac on Monday, July 17, from 10 a.m.-noon, in CEN 478A with instructor Sylvia Sandoz. To register, call Ext. 2199 and be sure to state which class you are interested in, your name and your extension.

Personnel Services closes and reopens with new look

The Personnel Services Office will be closed for regular business on Thursday, June 29. The staff will be moving to new work locations and taking on new work roles that day. The office will reopen on Friday, June 30 with newly assembled work teams. Thank you in advance for your patience as the kinks in this restructuring worked out. The new work teams are as follows:

- Personnel Services Representative Team includes Lorraine Allyn, Ext. 2111; Rose Holeman, Ext. 2113; Germaine Mock, Ext. 2110; and Judy Ward, Ext. 2112. This team will provide assistance and information for general personnel services including leave, benefits, insurance, paychecks, layoff/recall processes, routine contract questions, and personnel files.
- Employment and Orientation Team includes Carol Goldsberry, Ext. 2114 and Bridget McDonagh, Ext. 2847. This team will provide assistance and information for recruitment, job postings, classification, level change, new hire placement, and new employee orientation.
- Payroll Team includes Vicki Ellison, Joan English, Arlene Kinley. Please call the Personnel Services Representative Team to be forwarded to the Payroll Team. This team will provide assistance by processing the monthly payroll, making all insurance, annuity and PERS payments, and processing fiscal and calendar year payroll.
- Research, Technology and Office Operations Team includes Mary Glenn, Ext. 2583, and Darlene Sherman, Ext. 2586. This team will provide information about and assistance with bargaining units' contract interpretation, Workers' Comp claims, RIF grid, seniority, surveys, insurance contract administration, informal employee complaints, and evaluations for all employees.
- Team Coach: Sue Colvin

Lane's "Kids Kamp Series" returns

This summer's "Kids Kamp Series" will be offered at Lane on Wednesdays, July 5-26, from 8 a.m.-12:30 p.m. Children ages 6-12 years will have opportunities to experience horseback riding, a WISTEC tour, petting zoo, miniature golf, Lively Park Swim Center, and more. Kamps are free to children of current Lane students. The cost for children of non-students is \$12 per session plus the activity fee, space permitting. For more information, call the Athletic Department, at Ext. 2215 or stop by PE 204.

Kudos

Bill Klupenger, coordinator and instructor of the First Year in Business Program and the Advanced Business Management Program, has been elected vice president/president-elect of the International Association of Small Business Management Instructors. About 100 SBM instructors from the United States and Canada are members of the association. Klupenger and Jean Names, coordinator and instructor in the Small Business Management Program, recently co-presented at the annual SBM meeting in Albuquerque, New Mexico.

Group forming to study and discuss systems

A new group at Lane is being formed to study and discuss systems and their relationship to Lane. Some good summer reading that addresses systems thinking is *The Fifth Discipline: The Art and Practice of the Learning Organization* by Peter Senge and *The Fifth Discipline Fieldbook: Strategies and Tools for Building A Learning Organization* by Peter Senge, A. Kleiner, C. Roberts, R. Ross, and B. Smith. The ideas in these books could have a profound impact on the changes taking place at Lane. According to Peter Senge, "A learning organization is an organization that is continually expanding its capacity to create its future." For more information about this new group, contact Tzvi Lachman at Ext. 2223.

Summer workshops offered to staff

The following workshops presented by Linda de Caccia are open to all Lane staff: Make your reservations now for one or more of the following sessions: Personal Power on August 2 from 9-11 a.m.; Holding Your Ground Peaceably on August 14 from 3-5 p.m.; and Dealing With Defensiveness, on July 26 from 3-5 p.m. and August 11 from 1-3 p.m. To make your reservation, call Julie Baker or Patty Hammons at Ext. 2199.

Child Care Co-op taking applications

The Child Care Co-op has openings for four and five year olds now through August 10. and is accepting applications for students, staff and faculty for our summer program. Contact Sue Ferguson at Ext. 2025.

"Imagine Loving Your Work"

Brighten up your summer and attend "Imagine Loving Your Work", an inspirational and practical seminar for women who want to rediscover their best qualities and recharge their work life. The presenter, Marti Chaney, is a career consultant whose dynamic presentations help people discover the talents that are unique to them. "Imagine Loving Your Work" will be held on Friday, July 14, from 9 a.m.-4 p.m. at the Downtown Athletic Club. The cost is \$25 per person including a workbook, lunch and coffee. Remember, funds may be requested from the classified or faculty short-term professional activities committees. The deadline for registration has been extended to July 7. To register, call Lynne Swift at Ext. 2503 or Joan Bedard-Ross at Ext. 2163.

Volunteers needed for "KLCC In Bloom" and county fair

"KLCC In Bloom" needs volunteers for Sunday, July 16 to help sell tickets or serve refreshments at this year's garden tour. Volunteers work a three hour shift between 9:30 a.m. and 5:30 p.m. and receive a pass to see the rest of the gardens plus a free "KLCC In Bloom" poster. Call KLCC at Ext. 2224 to sign up!

Volunteers also are needed to staff the LCC booth at the Lane County Fair from August 15-20. Work a few hours, then enjoy the fair. Call Jeannee Beauchaine at Ext. 2336.

Workforce 2000 calls for proposals

"Workforce 2000" is the annual conference of the League for Innovation's Workforce Initiative, a partnership between the League and companies and agencies committed to expanding and improving workforce training in community colleges and technical institutes. The conference will be held January 31-February 3 in Orlando, Florida. Proposals are invited on the following subjects: workplace literacy; school-to-work/apprenticeship programs; tech-prep; model partnerships; continuous quality improvement; workplace skill standards and certification; contract training; and transitional workforce programs. Instructions for submitting proposals are available from Addie Lou Willis in Instructional Services. Proposals must be received by the League for Innovation by July 14.

Jim Ellison Classic golf tournament

Come have fun sending Jim Ellison, vice president of Instructional Services, out to pasture!! Sign up to play in the Jim Ellison Classic golf tournament on Thursday, August 31 at 1 p.m. at Emerald Valley Golf Course. Mark your calendars now. Flyers with details have been sent to all departments. If you have questions, call Marianne Kimball, Ext. 2306; Debra Lamb, Ext. 2915; Cynde Leathers, Ext. 2260; Doug White, Ext. 2618; or Sydney Wilson, Ext. 2617.

"Where To Find It At Lane" being updated

Where To Find It At Lane" is currently being updated for the 1995-96 academic year. This guide is intended to help Lane staff direct students to various resources and services. "Where To Find It At Lane" is published separately as an 8 1/2" x 14" flyer and in the Staff Directory on pages 78-81. If you know of a student service that is not currently listed, please call Therese Picado at Ext. 2060 by July 7. Please note that the service must pertain to students and visitors and should not be a duplicate of regular listings in the Staff Directory.

Basketball camp

The Jim Boutin Co-ed Basketball Camp will be held on main campus from July 31-August 4 from 8 a.m.-5 p.m. Cost is \$130 and includes a T-shirt, lunch and top-notch instruction. The 1994 camp was completely filled so register early. Brochures are available in Athletics or from Jim Boutin at Ext. 2553.

Fall inservice

September 11-14 has been designated for fall inservice department activities. The all-staff meeting and activities coordinated by the President's Office will be on September 18. Cross-campus activities will occur September 18-21. The areas of focus are assessment, diversity, technology, and education reform. The committee will finalize plans in July. No further information is available at this time.

If you have a special event you would like to have on the calendar, please pick up a 1995 fall inservice request form from Julie Baker's desk outside ADM 209 and return to Baker by July 10. The request will be shared with the Fall Inservice Team. Requests submitted after July 10 will not be considered. Questions? Call Julie Baker at Ext. 2199.

THANKS

I want to thank all of my friends who came to my retirement party to wish me well in my retirement. It was great to see everyone. One of the things I will really miss are all of the great people I have worked with over the years. I also want to say a very special thanks to Ann, Melanie and Jill for the lovely reception, to the LCCEF for the beautiful flowers, and to everyone for the beautiful clock. It looks great on my mantel. Thanks again and I hope to see you around. - Nancy Jaques

MORE SUMMER HOURS AND CLOSURES

- New summer hours for Archives and Records Management are as follows: Monday, 1:30-4:30 p.m.; Tuesday, 11 a.m.-4:30 p.m.; Wednesday, 8 a.m.-1 p.m., Thursday, 11 a.m.-4 p.m.; and Friday 8 a.m.-4:30 p.m. Maura Scanlon or Jeremy White will be available for retrieval requests and other storage questions you may have.
- The Bookstore will be closed for inventory on June 29 and 30.
- Personnel Services will be closed Thursday, June 29.

LAUREL HENRY UPDATE

- A few days after Laurel's home and belongings were destroyed in a fire, someone burglarized her home and stole her few remaining items. Joyce Mixer, at the YMCA, has arranged for a "recovery shower" for Laurel and her daughter. The shower will be held on Thursday, June 29, at 2:30 p.m. at The Potagerie, located in the YMCA. A wish list has been put together by Laurel to assist in any donation or purchasing decisions you might have. Examples of things she needs are a toaster oven, camera, tools, photo albums, linens for queen size bed, phone/answering machine. For a more specific list, call Luci Amabisca at Ext. 2223. Laurel's number is 683-7246 or 687-0511.
- The College Operations staff wishes to extend a challenge to the other clusters of the college to meet or break the funds raised by our group. As of June 22, the College Operations staff has raised \$438.05 which was deposited in Laurel's account at the U.S. Bank at 29th and Willamette. The challenge is on...just try and break this amount!
- Laurel is looking for a two-three bedroom dwelling, preferably in the South Eugene or River Road area. If you know of vacancies or have housing information, call Laurel at 683-7246 or 687-0511.

ADS

WANTED: Do you know anyone who videotaped the 1995 LCC graduation? If so, I would like to buy a copy of the video from them. Please call Michelle Scott, Financial Aid, Ext. 2641.

WANTED TO RENT: ORI visiting scientist, wife, and 9 year old daughter want to rent a three bedroom home every summer for two months until the 2000. If home available now until mid-August, would consider this summer. Contact Lynne Swift, T&D, Ext. 2503 or Manuel Barrera at 484-2123, Ext. 238 or 344-4956.

FOR SALE: 1980 NISSAN 280 2X, white with burgundy interior, low miles, new tires, excellent condition, sports back window, A/C. \$4,250. Pat Hansen, BEC, Ext. 2934 or 984-9335.

CLEARANCE TABLE SALE! 80% off all items on clearance table today. 90% off all items on clearance sale Wednesday, June 28.

FOR SALE: Men's 3-speed Czech touring bike. Good condition; great for town or collector. \$65, OBO. Call Demetri Lontos, ESL, Ext. 2253 or 345-0207.

FOR SALE: Computer, Leading Edge, keyboard and 50 hard drive. Magnavox colored monitor. Panasonic printer KX-P10801. \$500 takes all. Call Mary Michaud, ABSE, Ext. 2939 or 995-8655.

COME CHEER US ON! The LCC co-ed softball team (AKA: Memory Lane) will be playing every Sunday night until mid-August at the Bond Sports Complex. You will see such athletes as: Jerry Moskus, Larry Warford, Judy Ward, Lorraine Allyn, Rose Holean, and Bridget McDonagh. Autographs will be available after any game. The schedule is as follows: July 9, 16, & 23 at 6:15 p.m.; and Aug. 6 at 5 p.m.

THE DAILY deadline is noon of the day before publication. Include first and last name, department, and extension. Mail or deliver to Administration 210 or e-mail to Joan Aschim; or Internet to aschim@edlane.lane.edu. When possible, submit Mac or IBM 3-1/2" disks, any program. Editor: Joan Aschim. Assistant Editor: Angela Miller.