

The Daily

Published Mondays, Wednesdays and Thursdays for the staff of Lane Community College

Wednesday, October 2, 1996

Edited by Joan Aschim

Today

- Employee Walking Program orientation, 12:15 p.m., PE 205.
- Willamette Pass job recruiters, 10 a.m.-2 p.m., cafeteria.

Social science faculty win League innovation award



Nancy Peyron, Garry Oldham and Jerry Diller

Nancy Peyron, Garry Oldham and Jerry Diller won the 1996 Innovation of the Year award, sponsored by Lane and the League for Innovation, for the Chemical Dependency Counselor Training Program Forum. The forum supplements regular classroom learning with skill-building sessions, communication exercises, and group process activities. Students also discuss personal growth issues, such as self-doubt about their ability to become counselors, and family relationships. Since the forum began, the program drop-out rate has fallen from 36 percent to 15 percent.

Peyron joined Lane in 1992. She now teaches at University of Oregon in the Micronesian/South Pacific Program. Oldham became interim department chair for Social Science in 1995 after four years in Cooperative Education and Social Science. She has a master's in psychology from the UO and is a former director of Womenspace. Diller joined Lane in 1992. In addition to teaching, he writes on issues of ethnic identity. His book, "Freud's Jewish Identity," was published by Fairleigh-Dickenson University Press of New Jersey. He maintains a private practice as a licensed psychologist. Each of the League's member colleges presents an innovation award annually. Selection is made by former winners.

Guy Harshbarger named employee of the month

Classified Professional Development Team members surprised Guy Harshbarger of Campus Services on Tuesday with the Outstanding Classified Employee of the Month Award for October. A worker who arrives at 4:30 a.m., Guy is recognized as someone who will always find a way to get the job done, executes work efficiently, goes the extra mile in customer service, and solves problems quickly. He cares about others, has a good sense of humor and is pleasant to be around. A volunteer fireman and trained EMT, Guy has used his medical skills on campus when he came to the aid of a co-worker who was injured. He also is involved in Kidsports and the classified union. Congratulations, Guy!

Cross country event the biggest so far

Lane's cross country and track and field teams hosted the fourth annual Northwest Classic Cross Country Invitational on Sept. 28. It was the biggest and best ever: nearly 12,000 athletes finished seven races. There were masters, open, high school varsity, and junior varsity runners represented. This is the primary fundraiser for the squads - Tim Boyce

Synergy training has room for more

There's still room in the Synergy training scheduled for Friday, October 4, from 8:30 a.m. to 12:30 p.m. in FOR 309. Call 2040 to sign up.

Computer prices

Applied Engineering builds computers for departments on campus. Address intercampus orders to Computer Build LTD. Current prices follow; for additional pricing and delivery information, call Pam McClelland at 2459.

Pentium 133:

1.2 GB harddrive
16 MB EDO memory
3.5 Floppy
VGA Video Card with 2 MB memory
VGA 14" monitor
Mouse
Keyboard
Desktop case
DOS 6.22/Win 3.1

TOTAL \$1,250

*If machine is connected to network, netcard is required.

*Prices vary depending on current market conditions.

Additional options:

15" monitor	\$80
CD-ROM Kit 8X	\$179
Accton netcard	\$55
Internal modem 288 fax/data	\$110

President supports dedicated staff learning time

"I respect faculty and staff commitment to ongoing professional development and acknowledge the innovations that have made LCC a leader among community colleges," says President Jerry Moskus. "The 'Wednesday 3-5' dedicated staff time will permit individuals to continue to expand their skills. I encourage all staff to check *The Learning Times* quarterly calendar for the workshops of their choice." The first dedicated Wednesday is October 9.

Faculty insurance notice

Faculty employees must have two years of immediate prior coverage with OEA Choice or HMO Oregon before retirement to be eligible to carry their insurance into retirement. Once you retire, you cannot add dependents or change insurance carriers. If you plan on retiring in less than two years, you need to remain insured with your current carrier to be able to have insurance into retirement. If your retirement date is more than two years away (from November 1), this is your opportunity to make sure you have the insurance you will want in retirement. Faculty's open enrollment period for this year ends October 15.

Notice: The schedule of fall term network training classes will be attached to Thursday's *Daily*.

THANKS

Hi, I'm Bill Lee, your friendly cafeteria worker saying the biggest thank-you for all the cards, money and checks from everyone who helped my family in our time of mourning upon the death of my wife. With the money, I was able to pay for the funeral. Everyone from LCC and my church was so great to us. Thank you so much to everyone.

ADS

FIREWOOD: Fir/hardwood mix. Dry, split, 12" long. 1.2 cords. U-haul. \$80. Nita Amtzen, Micrographics, 2467, or 345-5041 eves.

FOR SALE: 1983 Oldsmobile Cutlass Supreme. Clean inside and out. New tires and water pump. Good transmission. \$1,300, OBO. Angela Miller, Institutional Advancement, 2268 or 484-4084.

FOR SALE: TURKEYS, geese, ducks, chickens. All are live birds about eight months old. Buck Arbuckle, E,FL&S, 2141. Home: 484-1743.

APARTMENT FOR RENT: Close to LCC, partially furnished, one person, no smoking, no pets, quiet setting. \$525 includes utilities. Buck Arbuckle, E,FL&S, 2141. Home: 484-1743.

WANTED: Cushioned arm chairs on rollers for English, Foreign Language and Speech Dept. Jo Anne McGillivray, 2419.

FOR SALE: 1983 OLDS OMEGA, 200,000+ miles, body in good shape, AM/FM, new tires, automatic, power steering, air, \$1,200. Diane Reiber (Social Science) 688-7270.

CROSS COUNTY T-SHIRTS: Lane's cross country team has Northwest Classic Cross Country T-shirts available for \$10. See Brad Joens or Sharon Foster in H&PE/Athletics if interested. Also available are long-sleeved mock turtle-necks in navy with "Lane Cross Country" in white for \$15. Sizes are limited.

FOR SALE: SEARS Craftsman contractor series 8-1/4" slide compound miter saw, 2 HP. Nearly new, used only a few times. A deal at \$100! Jana Nelson, 2393 (Math), 689-6846 eves.

THE ANNUAL NAACP Freedom Fund Dinner is Saturday, Nov. 23, 6 p.m. at the Eugene Hilton. Many local individuals, corporations and organizations support this event. Let's have LCC represented with one or more tables showing support for the local NAACP branch. This is NAACP's main fundraising event of the year; proceeds help support the services and programs offered throughout the year. Tickets are \$40 and are tax-deductible. Keynote speaker will be the dynamic Jamal Bryant, NAACP national youth director. Call soon for your tickets: Linda Wong, Study Skills, 2444.

The Daily publishes Mondays, Wednesdays and Thursdays, fall through spring; and Tuesdays during summer and all term breaks. Deadline for submissions is noon of the day prior to publication. Submissions must be in writing. Ads are free and limited to staff. Items run once and more often if space permits. Next-day placement cannot be guaranteed. *The Daily* can be reached in ADM 210, at 2591, fax 744-4170, e-mail TheDaily@instadv_ma (off-campus e-mail: aschimj@lanec.edu). Editor is Joan Aschim. Assistant Editor is Angela Miller.

The Daily

Published Mondays, Wednesdays and Thursdays for the staff of Lane Community College

Thursday, October 3, 1996

Edited by Joan Aschim

Today through Sunday

- KLCC radiothon begins and continues through Saturday, Oct. 12 at 11 p.m. or until the goal of \$140,000 is met. Call 2224 for the official radiothon form and list of community premiums.
- Annette Newingham, Chief Deputy County Clerk, today, 10:30-11:20 a.m., FOR 308.
- Secretary of State Phil Keisling, Friday, Oct. 4, 12-1 p.m., Boardroom.
- Synergy training, Friday, Oct. 4, 8:30 a.m. to 12:30 p.m., FOR 309. Call 2040 to sign up.
- Recreational Sports raft trip, Sunday, Oct. 6. Call 2215 for details.

Quick Win!

Last fall, a student saw Lane's television ad which said, "Classes begin September 25." When September 25 arrived, the student registered and discovered that some of the classes she wanted were already full. Bummer! This fall, things are different. Lane's ad that ran before registration said, "Registration starts September 3," and the ad that ran between registration and the first day of classes said, "Register now. Classes start September 24." The ad stopped running several days before classes began. As a result, more students registered on time and got the classes they wanted. That's a Quick Win from Students First!

A Quick Win is an immediate improvement identified by Students First! In this case, the change in Lane's ad was based on student feedback gathered in the Students First! analysis conducted over the past few months.

Students First! is the first application of process redesign methodology adopted by Lane in 1995 as a way to keep services and operations up to date. A project team examined services to students and recommended changes ranging from "quick wins" to long-term, phased-in changes. Executive leadership is expected to approve a complete Students First! implementation plan this month.

What's your disabilities IQ?

October is National Disabilities Awareness Month. Did you know there are presently over 500 students registered with Disability Services at Lane? Or that Lane has a larger population of students who are deaf than the UO? Both are true. To further test your awareness, try this quiz (answers in ads section):

1. When opening a door for a wheelchair person, where do you stand? Do you:
 - A) Pull/push the door open, standing to the side out of the way.
 - B) Pull/push the door open, going in and then holding the door open.
 - C) Lean against the door to hold it open.
2. You see a limited-abilities person seeming in some difficulty. Do you:
 - A) Decide what help they need and then do it.
 - B) Wait to see if they really do need help.
 - C) Ask them, "In what way may I help you?"
 - D) Go to the Disability Services office and tell a staff member.

Business instructors enhance computer expertise

Jean Names and Bill Klupenger of the Business Development Center will represent Lane at the Northwest Association of Small Business Management Instructors 15th annual fall conference in Cannon Beach from Oct. 17-19. NWASBMI is composed of business instructors and counselors from Oregon, Washington, Idaho, Hawaii, and Canada working at community colleges to provide business education and one-on-one counseling to owners of small, medium and large businesses. The conference theme is "Computer Tools for Small Business Growth and Expansion." For more information, call 2255.

Attachment

Attached to today's *Daily* is the network training schedule for fall term 1996. If you need a copy, call Bob Barber at 2305.

Health screening day

The Wellness Task Force will sponsor a health screening day on March 18, 1997. Last year more than 250 employees participated. The event provides cholesterol screening, blood pressure, hearing, and cardiovascular assessment. Watch for registration information.

Statewide cultural diversity institute planned

The Oregon Community College Cultural Diversity Institute will be held at the Eugene Downtown Athletic Club, November 6-7, sponsored in part by the Western Interstate Council for Higher Education (WICHE). The institute will provide diversity training to interested parties from all 17 Oregon community colleges. Topics include student success, student recruitment and retention, curriculum involvement, and resource development. Registration is \$40 per person including lunch and dinner on Nov. 6. We strongly encourage the participation of all interested staff members. If you have questions, e-mail Greg Evans or Sandra Jones.

Instructional technology conference to be held

"Tool Time: Putting Technology to Use" is the theme of the 17th annual instructional technology conference sponsored by the Communications Technology Center for Washington Community and Technical Colleges, to be held November 7-9 at the Red Lion Inn at the Quay in Vancouver. Full registration is \$145; workshops are available one-by-one as well. For a brochure, contact Addie Lou Willis in Instructional Services at 2120.

Leadership institute accepting applications

The National Institute for Leadership Development is accepting applications for the 1997 Leaders Development Program for Women Administrators in Higher Education. This six-day program is for faculty and administrative women who want to reach out for more responsibility. Seminars focus on building self-esteem and confidence. You will need to think of a project pertinent to your college and develop it with the help of a mentor. You may select any of four 1997 training locations: Phoenix, AZ, 1/11-1/17; Nashville, TN, 3/8-3/14; Albany, NY, 5/17-5/23; and San Diego, CA, 5/31-6/6. Applications are available in the Office for Student Services, or call NILD at (602)285-7599. - Miriam Thompson, 2315.

OFFICE NOTES

Audiovisual Services staff can now be paged at 710-2779 to assist with AV equipment emergencies Monday-Friday, 8 a.m.-5 p.m. Please continue to call 2370 for non-emergencies and to order AV equipment.

JOBS

OPEN TO CURRENT LCC BARGAINING UNIT EMPLOYEES ONLY:

- Interim Dept. Chair, Health & PE, 1/1/97-6/30/97, closing 10/14.
- Interim Dept. Chair, Performing Arts, 11/1/96-6/30/97, closing 10/14.

ADS

96/97 PORTLAND TRAIL BLAZER TICKETS: 32 games available. Improved seating. We upgraded our seats in the Rose Garden for this season, but with improved seating comes increased prices. Tickets this year have a face value of \$50.40, but we will sell to relatives, friends, friends of friends, and perfect strangers for \$45 each (2 tickets/game). Jim Garboden, Mech. Tech, 2168, or 683-2538 evenings & weekends.

ANGORA GOATS: Registered champions, breeding stock, kids, and wethers. Spinner's

flock reduction. Fleeces also available. Nadine Wilkes, Student Health, 2665 or 726-2180.

MASSAGE THERAPIST wanted in Fall Creek or Lowell area. Prefer woman with varied experience. Nadine Wilkes, Student Health, 2665 or 726-2180.

SMALL HARDWOOD DESK for sale. Good size for older child. (44"x19" top). \$40 OBO. Ruth Wren, Social Science, 2066.

ANSWERS to disabilities awareness quiz:
1. A) Open the door and stand to the side.
2. C) Ask, "In what way may I help you?"

WANTED: Cushioned arm chairs on rollers for E,FL&S. Jo Anne McGillivray, 2419.

The Daily publishes Mondays, Wednesdays and Thursdays, fall through spring; and Tuesdays during summer and all term breaks. Deadline for submissions is noon of the day prior to publication. Submissions must be in writing. Ads are free and limited to staff. Items run once and more often if space permits. Next-day placement cannot be guaranteed. *The Daily* can be reached in ADM 210, at 2591, fax 744-4170, e-mail TheDaily@instadv_ma (off-campus e-mail: aschimj@lanec.edu). Editor is Joan Aschim. Assistant Editor is Angela Miller.

The Daily

Published Mondays, Wednesdays and Thursdays for the staff of Lane Community College

Thursday, October 7, 1996

Edited by Angela Miller

This week:

- International Intercultural Committee, Tuesday, October 8, 1-2 p.m., HEA 209. Anyone interested in enhancing international education at LCC is welcome.
- Writers' Club, Tuesday, Oct. 8, 3 p.m., CEN 449. Open to staff and students.
- Instructional Services Council, Wednesday, October 9.
- Classified Council, Wednesday, Oct. 9, 3-5 p.m., CS 212-A.
- Dedicated Learning Time, Wednesday, Oct. 9, 3-5 p.m. (See page 2.)
- Bookstore open house, Thursday, Oct. 10, 8 a.m.-5 p.m. and Friday, Oct. 11, 9 a.m.-4:30 p.m.
- Marketing grant deadline, Thursday, October 10. Call Angela Miller, 2268 for application.
- Faculty music recital: "Kaleidoscope '96", Friday, Oct. 11, 8 p.m., Performing Arts.
- Faculty art exhibition, through October 18, Art Gallery.

ASLCC Child Care Co-op receives accreditation

The ASLCC Child Care Co-op has been accredited by the National Association for the Education of Young Children through July 31, 1999. NAEYC accredits child care centers, preschools, kindergartens and before-and after-school programs. Lane's center is one of some 4,600 out of 80,000 programs, or about five percent, to achieve NAEYC accreditation. The ASLCC Child Care Co-op provides subsidized child care for student parents. Parents participate in a variety of duties. The co-op also provides workshops in health, safety, nutrition, and parenting skills. Co-op staff specialize in early childhood education. For more information Call co-op director Georgia Soto at 2025.

United Way serves Lane's outreach communities



Do you know that United Way invests \$103,071 in services to Cottage Grove residents and \$62,192 in services to Florence and Mapleton residents. In 1995, Cottage Grove residents donated \$21,742 and Florence/Mapleton residents donated \$20,702. If you live in Cottage Grove or Florence and have concerns regarding the funding of United Way services in your community, would like more information about the specific agencies that United Way supports to these areas, or need a pledge card, contact Tracy Simms at 2889.

Sun Valley recruiters coming

Recruiters from Sun Valley Resort in Idaho will conduct interviews on main campus on November 6. They are recruiting for various winter season jobs. Contact the Job Placement Office, FOR 302, for applications and to schedule an interview. - Joan Adams, 2326

Do you work with an outstanding classified staff member?

If you know or work with an outstanding classified employee, why not nominate them for recognition? Nomination forms are temporarily housed with Vickie McKenna in College Finance, 2606. Completed forms are being accepted by Julie Baker in Training & Development. Give recognition where recognition is due and submit your nomination for Outstanding Classified Employee of the Month!

Flu shot clinics

Due to an overwhelming response to our upcoming flu vaccination clinics, another time slot has been added. Make an appointment ahead of time at Student Health Services, 2665, for one of the following flu shot clinics: Thursday, Oct. 10, 7:15-9 a.m.; Tuesday, Oct. 15, 4-6:30 p.m.; Wednesday, Oct. 16, 12-1:30 p.m.; and Thursday, Oct. 17, 8 a.m.-8:45 a.m.

The cost is \$8. Cottage Grove and Florence clinics also are planned; call 2665 for details. Clinics are open to both students and staff.

Bookstore hosts open house

The newly renovated Bookstore will host a two-day open house on Thursday, Oct. 10 from 8 a.m.-5 p.m. and Friday, Oct. 11 from 9 a.m.-4:30 p.m. Enter the drawing, enjoy vendor samples, and take advantage of special prices. There will be an apple (not Apple) give-away at 9:30 a.m. and cake will be served at 2:30 p.m. Enter the drawing both days and double your chances to win. Prizes include: M & M denim jacket, Sony boom box, Phone Mate answering machine, and Nikon Fun Touch camera. The drawing will be held Friday, Oct. 11 at 3 p.m.

Faculty level change

Faculty Level Change Requests for 1996/97 are due in Personnel Services on October 31 by 5 p.m. Request forms can be picked up in Personnel Services.

Recreational Sports sponsors first "natural high" event

In an effort to provide a proactive solution to the dramatic rise of substance abuse in our society, Recreational Sports is hosting a healthy alternative, a "Natural High" event on Friday, Oct. 11, 18 and 25, from 7-10 p.m. in the gym. The event is free and all ages are welcome. There will be fun and games, and hors d'oeuvre. For information, contact Christy Davids, 2215.

Walking program gets underway

Lane's Employee Wellness Program extends recognition and congratulations to Sharon McCarroll and Chuck Reid, winners of the spring term Walking Incentive Contest. Each won gift certificates for \$50 toward the purchase of walking shoes. Incentives are awarded based on consistency of participation. This year's walking program is just getting under way. Take advantage of Lane's unique walking trails and join the program. Walking manuals are available to all participants. For details about meeting times and locations, contact John Healey at 2271.

Dedicated Learning Time offerings this week

Join your peers at one of the Dedicated Learning Time offerings on Wednesday, Oct. 9 from 3-5 p.m. Topics include Lesson Plan for Positive Change, Creative Organizing Through Mind Mapping, "New" Manager's Role as Leader, and Integrating Critical Thinking into Your Teaching Curriculum. Phone mail box 7775 to preregister for any session. For further descriptions, see page 5 of the Learning Times. Learning Times were distributed during fall inservice. If you did not receive one, they are available from Julie Baker, 2199.

Attachment

Attached to today's *Daily* are the Faculty Professional Development survey highlights.

Silent Witness exhibit returns to campus

October is Domestic Violence Awareness Month. In observance, the Women's Program will sponsor the Womenspace "Silent Witness" exhibit on Oct. 8 and 9, from 9 a.m. to 4 p.m. in the cafeteria. The traveling exhibit features 17 life-size cutout figures of Oregon women killed by their husbands or partners during 1993/94.

Correction: The Oct. 2 *Daily* reported that 12,000 athletes finished the Northwest Classic Cross Country Invitational races. That should be 1,200. Our apologies!

JOBS

OPEN TO LCC BARGAINING UNIT EMPLOYEES:

- Grill cook, 8 a.m. - 4:30 p.m., Foodservices, closing 10/11/96.

ADS

FOR SALE: SOLID ASH CRIB with mattress, excellent condition, \$175. Kim Leeds, Math, 2017.

WANTED: Daughter is joining Brownies. We need to find a uniform and other Brownie paraphernalia. Call Laurel Henry, Indus. Tech, 2697 or 683-7246.

PUBLIC LECTURE: "Corporate Sweatshops and Labor Organizing in Nicaragua: Structural Adjustment, Human and Worker Rights Here and Abroad" Wednesday, Oct. 16, 3:30 p.m., Walnut room, EMU (near post office) at the U of O. Jerome Garger, E,FL&S, 2162.

SEEKING AN UNDERGRADUATE CHARLES STURT CATALOG. Once again I forgot to whom I lent this catalog and now I need it back. If it's sitting on a shelf adding to your dust accumulation, would you please return it to me? Mason Davis, CEN 221.

LAPTOP COMPUTER, 486-50 AT&T Safari (NEC), RAM-20 meg, hard drive, 350 meg, trackball, color monitor, modem, battery, case, software. \$3000 new. \$975 w/ free kitten! Brody Tyler, 2869 or 687-8354.

DEADLINE FOR *THE DAILY* is noon of the day prior to publication. *The Daily* publishes Mondays, Wednesdays and Thursdays, fall through spring. Submissions must be in writing. Contact *The Daily* in ADM 210, phone 2591, fax 744-4170, or The Daily@instadv_ma, or aschimj@lanecc.edu. Editor is Joan Aschim. Assistant Editor is Angela Miller.

The Daily

Published Mondays, Wednesdays and Thursdays for the staff of Lane Community College

Wednesday, October 9, 1996

Edited by Joan Aschim

Today

- Instructional Services Council, 1:30-3 p.m., Boardroom.
- Classified Council, 3-5 p.m., CS 212-A. Guest of honor: Laura Price, Outstanding Classified Employee of the Year for 1995/96. Other agenda items: meeting schedule.
- Dedicated Learning Time workshops, 3-5 p.m., see page 5 of *The Learning Times*.

Schafer grant spruces up meeting/lodging facility



Siltcoos Station

The Eldon G. Schafer Endowment for Innovation has awarded \$2,275 in seed money to Bill Porter, director of LCC at Florence, to help build an outdoor amphitheater/classroom and pay for septic and plumbing improvements at Siltcoos Station. The Station's cabins now sleep 26 and the boathouse offers a sweeping view of Siltcoos Lake for group activities. Lucy Schafer Kinsman chairs the endowment committee. The endowment was established in honor of her late husband who served as LCC president from 1970-85.

Faculty Council to meet

Faculty Council meets Thursday, Oct. 10, from 3-4:30 p.m., in the Boardroom, to welcome new members and set the year's agenda. Give agenda suggestions to Margaret Bayless at 2162.

Great Ping-Pong Ball Drop set for Friday

The Great Ping-Pong Ball Drop will be Friday, Oct. 11, at 11:50 a.m. on Bristow Square. Flight Tech instructors Jason Woodruff and Bruce Gustafson will fly a helicopter over the square and drop hundreds of numbered Ping-Pong balls which students can redeem for prizes.

Music faculty to give concert

The Lane music faculty concert, *Kaleidoscope '96*, will be held Friday, Oct. 11, at 8 p.m. in the Blue Door Theater. Cost to Lane staff and guests is \$4. To order, call 2202. Performing will be Ron Bertucci, Kimberly De Moss McConnell, Jim Greenwood, Barbara Myrick, Dan Sachs, Camilla Carter, Yvonne Hsueh, and Jim Pelly.

United Way has Mary Spilde's support



From Vice President for Instruction Mary Spilde: *"I only recently moved to Lane County and although I'm not too involved in the community yet, I've been involved with United Way of Linn County for many years at all levels ... as a volunteer and board member in nonprofit agencies funded by United Way; as committee member in the allocations process; and as president of the board. These activities educated me on the importance of the work our nonprofits do. Our children, our seniors, our citizens would be much worse off without the services provided by these agencies. United Way is the glue that holds much of this together. They make it easy to give to these worthy causes. Please think about the many beneficiaries of United Way funds and give generously to make quality services possible. Thank you."* For more information on United Way, call Tracy Simms at 2889.

Internet language presentation to be held

Mathematics instructor Bill Griffiths will discuss the new Internet-oriented programming language Java and show two Java applets he wrote, on Tuesday, Oct. 15, at 3 p.m. in M&A 235.

Student evaluation forms to change this fall

The form used for student evaluation of instruction has been changed by authority of Vice Presidents for Instruction Mary Spilde and Larry Warford. The new form has 12 multiple-choice items and two free-response items that apply to the whole college. It also has a large section where departments can ask 13 questions, and a section where individual instructors can write five questions unique to them. Dan Hodges is contacting administrative assistants, department heads, and other staff connected with the student evaluations this week. Do not use the old green forms—recycle them!

New faculty orientation to be held

An orientation for new faculty will be held Tuesday, Oct. 15, from 3-5 p.m. in the northeast cafeteria area. "Join colleagues for tea with jazz and information on student and faculty resources," says Carmel Decroos. A short tour of teaching resources will follow separate sessions for part-time and contracted faculty. RSVP to 2638 by 10 a.m., Friday, Oct. 11.

OSBDCN members to present at national conference

Oregon Small Business Development Center Network State Director, Edward "Sandy" Cutler, and Associate Director, Christine Krygier, will attend the Association of Small Business Development Centers Fall Conference in Orlando, Florida from October 13-16. They will make a joint presentation titled "ASBDC 2000 and Beyond." Cutler also will present information on legislative issues in a separate session. ASBDC ensures that small businesses receive the best possible management and technical assistance in participating SBDC states.

Award-winning poet to speak at Writer's Club

The Lane Writer's Club will host David Mason, professor of literature and creative writing at Moorhead State University in Minnesota, on Tuesday, Oct. 15, at 3 p.m. in CEN 449. Mason's first book, *Buried Houses*, won the Nicolaus Roerich prize for poetry. His second book, *The Country I Remember*, is just out. For more information call Sharon Thomas at 2145, Kathleen Shull at 2118, or club president Stephen Smithee at 896-3695.

Disabilities didn't stop these folks

October is National Disabilities Awareness Month. Learning Disabilities and Attention Deficit Disorder overlap about 60 percent of the time. Some well-known folks with ADD: Whoopi Goldberg, Robin Williams, Joan Rivers, and George Bush's children. Some personalities with LD: Winston Churchill, Nolan Ryan, Henry Ford, Andrew Carnegie, Dustin Hoffman, John F. Kennedy, Walt Disney, John Lennon, Agatha Christie, Eleanor Roosevelt, and Tom Cruise.

OFFICE NOTES

College Finance will be closed 8-9 a.m. on Thursdays effective October 10.

JOBS

- Financial Aid Specialist, Financial Aid Dept., closing 10/21/96. Open to LCC bargaining unit employees and the public.
- Grill Cook, 8 a.m.-4:30 p.m., Foodservices, closing 10/11/96. Open to LCC bargaining unit employees.

ADS

FOR SALE: Modern-Teleport Gold II for Macintosh Performa 14.4 (unused) \$30; CSA Ski Machine \$40; Body by Jake \$45; Hip and Thigh Machine by Jake \$40; (all exercise equipment in new condition, just a little dusty!) Susan Carlile, Flight Tech, 744-4195 or 4304, evenings 998-3942.

1990 NISSAN PICK-UP 2 x 2 with new bed liner, alarm system, and brand new Fischer pull-out stereo tape deck/radio. 89,000 miles, top condition. Great for teen-age boy's first auto. Contact Sally Wilson, Social Science, 2428 or after hours at 683-5203.

USED BABY stuff: crib + accessories, stroller, play pen, infant car seat, older child car seat, high chairs, swings, etc., etc. We would like to sell everything as a package deal, but also would consider any offers for individual items. Doug Hintz, Math, 689-6120.

FREE, VERY NICE HYDRANGEAS ready to dry. I don't want to dry them this year and hate to waste them. To dry you just set in vase without water and mother nature does the rest. The deal is, I'll cut and bring to LCC, you pick up and cart off. Sandy Ing, Student Health, 2666, 998-6631, or e-mail.

FOR SALE: 2 hardwood student desks \$20 each. Roka Walsh, IC, 2436 or 686-4455.

NAACP Freedom Fund Dinner, Nov. 23, 6 p.m., Eugene Hilton. Tickets are \$40, tax-deductible. For tickets call Linda Wong, Study Skills, 2444.

DEADLINE FOR THE DAILY is noon of the day prior to publication on Mondays, Wednesdays and Thursdays. Submissions must be in writing. Contact The Daily in ADM 210, phone 2591, fax 744-4170, or The Daily@instadv_ma, or aschimj@lanec.edu. Editor is Joan Aschim. Assistant Editor is Angela Miller.

The Daily

Published Mondays, Wednesdays and Thursdays for the staff of Lane Community College

Thursday, October 10, 1996

Edited by Angela Miller

Today and Friday:

- Bookstore open house, today, 8 a.m.-5 p.m. and Friday, Oct. 11, 9 a.m.-4:30 p.m.
- Orlaida Gutierrez Cabrera, Cuban director of the Institute for Friendship Among Peoples, today, 9-9:50 a.m., APR 223.
- Faculty Council, today, 3-4:30 p.m., Boardroom.
- Marketing grant deadline, today. Call Angela Miller, 2268 for application.
- Student Services Fair, today; Friday Oct. 11. vendors, food booths, student club information!
- Ping-Pong ball drop, Friday, Oct. 11, 11:50 a.m., Bristow Square.
- Process Redesign Leadership Team, Friday, Oct. 11, 1-5 p.m., Boardroom. Guests welcome.
- Faculty music recital: "Kaleidoscope '96", Friday, Oct. 11, 8 p.m., Performing Arts.
- Faculty art exhibition, through October 18, Art Department Gallery.
- Recreational Sports "Natural High" event, Friday, Oct. 11, 7-10 p.m., gym. Free, fun and games, and hors d'oeuvres, all ages welcome. For information, call 2215.

Annual advisory committee recognition dinner

The annual advisory committee recognition dinner is scheduled for Tuesday, Nov. 19, from 5:30-7:30 p.m. Advisory committee department chairs, executive secretaries and other interested members should plan to attend this event. More information will follow. Contact Bob Way or Mary Jo Workman at 2203.

Forensic Team goes to Harvard

Lane's forensic team is going to the Harvard Invitational Debate Championships today through Oct. 13. Lane is the only community college invited and will be competing against the best debaters from Europe, Canada and the United States. Students Dawn Hedrick, Annie Bruce and Alexanne Ralph will represent our team. The rest of the debate team will be competing at Lewis and Clark this weekend.

Personnel notices

- Remember faculty insurance open enrollment ends on Tuesday, October 15. Coverage is effective Nov. 1.
- Faculty RIF reports will be delivered to departments on Tuesday, Oct. 15. Please distribute them using the RIF report receipt form to obtain required signatures.
- 1996/97 faculty level change requests are due in Personnel Services Oct. 31 by 5 p.m. Forms can be picked up in Personnel.

Cuban director of Institute for Friendship Among Peoples to speak

Orlaida Gutierrez Cabrera, Cuban director of the Institute for Friendship Among Peoples, will speak to Patsy Raney's Women's Studies class **today** from 9-9:50 a.m. in APR 223. All are welcome to attend this discussion with her about the current realities of women's lives in Cuba.

Lane chosen to participate in Epiphany Project

Lane Community College has been chosen to participate in the Epiphany Project, funded by Annenberg/CPB. This project is being developed to help teachers of writing integrate technology into their programs. The project is also interested in all aspects of teaching with technology in each discipline. As a part of this project, a listserv is being created for faculty at Lane to discuss issues surrounding their teaching technology. If you are interested in joining such a list, please e-mail Pam Dane at pamdane@efn.org.

In-service evaluation

In-service week is behind us, but before it gets too far away, we'd like feedback from you. In particular, how was the format of three major events scheduled over three mornings? Were the topics appropriate (any ideas for next year)? Did you learn anything? Have fun? Please send your feedback to Patti Lake in Training & Development.

Employee reception scheduled

The first monthly Employee Recognition Reception of 1996/97 will be held Monday, Oct. 21 from 4-5 p.m. in the cafeteria. Guy Harshbarger, October Classified Employee of the Month, and others will be honored. For more information, e-mail Julie Baker.

Personnel Services - who to call

- Personnel Services Representatives Team: Lorraine Allyn, 2111; Rose Holeman, 2113; Darlene Sherman, 2586; Judy Ward, 2112; assistance and information for general personnel services including leave, benefits, insurance, paychecks, layoff/recall process, routine contract questions, and personnel files.
- Employment and Orientation Team: Carol Goldsberry, 2114; Bridget McDonagh, 2847; providing assistance and information for recruitment, job postings, classification, level change, new hire placement and new employee orientation.
- Payroll Team: Vicki Ellison, 2589; Joan English, 2115; Arlene Kinley, 2811; providing assistance by processing the monthly payroll; making all insurance, annuity and PERS payments, and processing fiscal and calendar year payroll.
- Office Operations Team: Mary Glenn, 2110; Germaine Mock, 2110; providing information about and assistance with bargaining unit(s) contract interpretation, Workers' Compensation claims, RIF grid, seniority, surveys, insurance contract administration, informal employee complaints, and evaluations for all employees.
- Director is Sue Colvin; Assistant Director is Darlene Sherman.

Naturalist/writer to speak about Bay of Fundy

Harry Thurston, one of Canada's leading science and environmental writers, will present a slide/lecture on the wonders of the Bay of Fundy on Tuesday, Oct. 15, from 3-4:30 p.m. in FOR 308. This presentation is sponsored by Continuing Education and is free.

New homepage features

- For teachers at Lane who are interested in learning the ins and outs of the Internet, there is an Internet tutorial for teachers available on the English Department's homepage. This tutorial not only gives information on how to use the Internet, but it has many terrific links for teachers of all disciplines. Please check it out.
- PERS now has a home page. The address is <http://www.pers.state.or.us>. There are many articles regarding Ballot Measure 45 and other items of interest for PERS members, including an on-line member's handbook, located at this address.

THANK YOU

I'd like to give a big thank you to Kim Bower, Toby Finkelstein, Gayle Lewis and Darlene Schwieger in Training and Development for their energy and unlimited assistance in preparation for the STARTech training presentation at Sony Disc Manufacturing on October 7. And another big thank you to Printing and Graphics--as usual they printed our materials on short notice and in record time. - Judith Watt, T&D

JOBS

- Financial Aid Specialist, Financial Aid, closing 10/21/96. Open to LCC bargaining unit employees and the public.
- Grill cook, 8 a.m.-4:30 p.m., Foodservices, closing 10/11/96. Open to LCC bargaining unit employees.

ADS

WELCOME DANCE, Saturday, Oct. 12, 7 p.m.-midnight, LCC main gym. Learn the Salsa and Merengue to the beat of Conjunto Alegre, the best Latin band in Portland, and Senor Mix, one of the best DJs in the northwest. Beginner's dance lessons, 7-8 p.m. and advanced lessons, 8-9 p.m. Cost is \$5. Adonay Solleiro, High School Relations, 2678.

OEA is sponsoring phonebanks on Ballot Measures 45, 46 and 47 on Oct. 15 and 29 from 5:30-7 p.m. and 7-8:30 p.m., plus literature drops on Oct. 19 and 26. For information or to participate, call Eileen Thompson, E, FL & S, 2749.

POSTAGE STAMPS: Campus Ministry collects all types of used postage stamps. Please leave 1/4" of paper around the stamp. Also, post cards - the entire card, written or plain, stamped or not; these are sold "as is". Stamps are sent to the Holy Name Sisters who sell them to support their clinics/schools in Africa. Jim Dieringer, Campus Ministry, 2850.

WANTED: Color monitor for IBM computer, reasonable cost. Vena Jensen, CCRC, 2034.

DEADLINE FOR *THE DAILY* is noon of the day prior to publication on Mondays, Wednesdays and Thursdays, fall through spring. Submissions must be in writing. Contact *The Daily* in ADM 210, phone 2591, fax 744-4170, or e-mail TheDaily@instadv_ma, or aschimj@lanecc.edu. Editor is Joan Aschim. Assistant Editor is Angela Miller.

The Daily

Published Mondays, Wednesdays and Thursdays for the staff of Lane Community College

Monday, October 14, 1996

Edited by Joan Aschim

This week

- Faculty insurance open enrollment ends Tuesday, October 15, for coverage effective Nov. 1.
- Faculty RIF reports delivered to departments, Tuesday, Oct. 15.
- New faculty orientation, Tuesday, Oct. 15, 3-5 p.m., northeast cafeteria area.
- Bill Griffiths presents Internet programming language Java, Tuesday, Oct. 15, 3 p.m., M&A 235.
- Scientist Harry Thurston discusses the Bay of Fundy, Tuesday, Oct. 15, 3-4:30 p.m., FOR 308.
- David Mason, poet, reads Tuesday, Oct. 15, 3 p.m., CEN 449. He's joined that evening by LCC instructor Ellen Cantor for the Lane Literary Guild Windfall Reading Series, coordinated by LCC instructor Ken Zimmerman, at the EMU Fir Room, UO. Call 2145 for details.
- Instructional Services Council, Wednesday, Oct. 16, 1:30-3 p.m., Boardroom.
- Stress relief workshop with Shan Titus, Wednesday, Oct. 16, 3-5 p.m., BU 203. Register at 7775.
- Diversity Team, Wednesday, Oct. 16, 3:30-5 p.m., FOR 308.
- Board of Education, Wednesday, Oct. 16, Zone 5 applicant interviews 5:30 p.m.; meeting 7 p.m.
- Managers Forum, Friday, Oct. 18, 8:30-10 a.m., Boardroom.
- Teaching With Style teleconference, Friday, Oct. 18, 11 a.m.-1 p.m., CEN 10. (See next page).
- Process Redesign Leadership Team, Friday, Oct. 18, 1-5 p.m., Boardroom. Guests welcome.
- Recreational Sports Natural High games, volleyball/basketball, Friday, Oct. 18, 7-10 p.m., main gym.
- Recreational Sports ballroom dance, Saturday, Oct. 19, 8-12 p.m., main gym.



The art faculty exhibit ends Friday in the Art Department Gallery. Above is a photo sculpture by David Joyce.

Culinary students keep Lane well fed

Culinary students prepare and serve the Vegetarian Delite in the cafeteria, delicious, ethnic vegetarian cuisine Monday through Thursday. The student-run Renaissance Room opens Oct. 22, serving lunch Tuesdays and Thursdays; for reservations call 2697.

"Resistance is the purest form of courage"

During October, the Library's Mezzanine Gallery is hosting a traveling exhibit sponsored by the Oregon ACLU. "Faces of Liberty" shows the faces and relates the dramatic personal stories of eight Oregonians who stood up to defend their civil rights. At no small risk to themselves, these Oregonians from various walks of life heroically defended the basic rights we cherish. Included with the exhibit are free copies of the Bill of Rights, because "Only the educated are free" (Epictetus). For more

information about this exhibit or to schedule a future exhibit, contact Daniel Moret at 2318. The gallery is now accepting proposals for artistic and informational exhibits for the current school year.

United Way helps Red Cross help one in six residents



From Vice President for Student Services Linda Fossen: "As chair of the Lane County Chapter of the American Red Cross, I have seen first-hand the difference that United Way funds make in the lives of people who need help. Red Cross provided emergency food, shelter, and clothing to one in six Lane County residents slammed by record-setting storms and flooding last year. This was made possible by generous United Way contributions and the work of the 800 volunteers. Overall, the local chapter of the American Red Cross delivered 61,000 meals to elderly recipients of Meals of Wheels, trained 16,000 adults in CPR/first aid, and provided many other services. Truly, "Help Can't Wait," and United Way funding makes it possible for Red Cross to assist thousands of needy Lane County residents each year." For United Way information, call Tracy Simms at 2889.

Faculty insurance open enrollment

Faculty employees must have two years of immediate prior coverage with OEA Choice or HMO Oregon before retirement to be eligible to carry insurance into retirement. Once you retire, you cannot add dependents or change insurance carriers. If you plan to retire in less than two years, you need to remain insured with your current carrier to be able to have insurance into retirement. If your retirement date is more than two years away from November 1, this is your chance to make sure you have the insurance you will want in retirement. Remember, open enrollment ends tomorrow.

Teleconference: Teaching With Style

Teaching With Style, an interactive teleconference, will be held Friday, Oct. 18, from 11 a.m.-1 p.m. in CEN 10. It will show how to improve teaching effectiveness by illustrating the practical applications of an integrated model of teaching and learning styles developed by one of the leading experts in the field: Tony Grasha, Ph.D., University of Cincinnati. This model combines the role of personal values, principles of learning, and other factors associated with teaching and learning styles. All interested staff are invited to attend. For more information e-mail Cynde Leathers or call 2260.

Media Arts & Technology studio concerts

Four concerts will be held in the Media Arts & Technology studio, first floor Forum: Skye-Irish Celtic acoustical band, Saturday, Oct. 26, 8 p.m.; Grupo Condor, South American/Andean folk, Friday, Nov. 1, 8 p.m.; The McCormacks, children's songs, Saturday, Nov. 16, 3 p.m.; Babes With Axes, feminist rock, Monday, Nov. 25, 8 p.m. Tickets are \$6 advance, \$7 at the door; all four for \$20. Contact Heather at 461-6357 or Kristen at 683-1257 for more information.

Workshops

- Communication and High Performance Team Communication Skills, with Peter and Susan Glaser, will be held Nov. 4-5 at the Black Angus. Over 400 staff have taken this training. Join them - call 7775 to register. This is the only time this training will be offered this fall.
- Stress can be healthy! Learn new tricks to deal with old issues. Sponsored by the Classified Professional Development Team, and open to all staff on Oct. 16, 3-5 p.m. in BU 203. Taught by Shan Titus. To preregister, call voice mail box 7775.

ATTACHMENT

Attached to today's *Daily* are details for the workshop, "Thriving in a World of Nonstop Change" with Dr. Al Siebert, on Oct. 29, morning or afternoon session, sponsored by Classified Professional Development Team for all staff. For details call Julie Baker at 2199.

JOBS

- Financial Aid Specialist, Financial Aid, closing 10/21. Open to LCC bargaining unit employees and the public.
- Office Support Specialist, 27 hrs./wk., Mechanical Technologies, closing 10/18. Open to LCC bargaining unit employees.

ADS

FOR SALE: Futon frame, full size, tri-fold, slightly used. Slightly used golf balls. 1971 VW Superbeetle. Queen size box spring/frame (frame also fits king; no mattress). Dust buster hand vacuum. Kay Gidley, Athletics, 2555, or 345-3706.

IF YOU'RE INTERESTED in losing weight, having more energy, and creating optimal health, try the super anti-oxidant psychogenol. I distribute natural 100% safe standard herbal products. Need extra income? This is a great part-time business; I provide training. Call Enid Leonard, Study Skills, 2075, or 686-4318.

2400 DPI SCANNER for sale, \$350. Robert Baggitt, 744-3162, or 2751, IC lab.

1990 NISSAN PICK-UP 2 x 2, new bed liner, alarm system, and brand new Fischer pull-out

stereo tape deck/radio. 89,000 miles, top condition. Great for teen-ager's first auto. Sally Wilson, Social Science, 2428 or 683-5203.

LECTURE: Corporate Sweatshops & Labor Organizing in Nicaragua: Structural Adjustment, Human & Worker Rights Here & Abroad, Wednesday, Oct. 16, 3:30 p.m., Walnut room, EMU, UO. Jerome Garger, E,FL&S, 2162.

OEA is sponsoring phonebanks on Ballot Measures 45, 46 and 47 on Oct. 15 & 29 from 5:30-7 p.m. and 7-8:30 p.m., plus literature drops on Oct. 19 & 26. To participate, call Eileen Thompson, E,FL&S, 2749.

CAMPUS MINISTRY COLLECTS all types of used postage stamps for the Holy Name Sisters who sell them to support their clinics/schools in Africa. Please leave 1/4" of paper around the stamp. Also, post cards - the entire card, written or plain, stamped or not; these are sold "as is". Jim Dieringer, Campus Ministry, 2850.

WANTED: Color monitor for IBM computer, reasonable cost. Vena Jensen, CCRC, 2034.

DEADLINE FOR THE DAILY is noon of the day prior to publication on Mondays, Wednesdays and Thursdays, fall through spring. Submissions must be in writing. Contact The Daily in ADM 210, phone 2591, fax 744-4170, or e-mail The Daily@instadv_ma, or aschimj@lanec.edu. Editor is Joan Aschim. Assistant Editor is Angela Miller.

The Daily

Published Mondays, Wednesdays and Thursdays for the staff of Lane Community College

Wednesday, October 16, 1996

Edited by Joan Aschim

Today

- Instructional Services Council, 1:30-3 p.m., Boardroom. Topic: annual schedule.
- Stress relief workshop with Shan Titus, 3-5 p.m., BU 203. Register at 7775.
- Diversity Team, 3:30-5 p.m., FOR 308.
- Board of Education, Zone 5 applicant interviews 5 p.m.; meeting 7 p.m.
- Lane Writer's Club second workshop, 3 p.m., CEN 449. The first workshop was a big success and lots of fun. Bring friends, colleagues and students to enjoy refreshments and creative stimulation.

Keith Hollenbeck on critical thinking skills in classroom

Keith Hollenbeck, U of O researcher, offered specific teaching strategies after a basic discussion of curriculum design features at a workshop on Oct. 9. He encouraged faculty to clarify concepts with "examples and non-examples", to model desired behavior by "thinking out loud" and to show students how to graphically explore relationships between ideas. He also distributed some useful models of planning worksheets and evaluation tools. A videotape of the session will be available on reserve in the library under "Teachers Talking about Teaching".

Board agenda

The Board of Education meets tonight at 5 p.m. to discuss the Zone 5 vacancy. Applicant interviews begin at 5:30 p.m. The regular board meeting begins at 7:30 p.m. Highlights from the agenda: Zone 5 appointment, approval of EMT program; purchase of training materials for Business and Industry Services classes in microcomputer systems service; resolutions honoring Energy Management Program supporters; and a resolution on Measure 47.

Quick Win!

Last summer, a student received a billing statement from Lane. It showed a charge he thought he had paid. When he called the number at the top of the statement he was surprised to be told, "You have reached Admissions. For the answer to your question, please call College Finance at xxx-xxxx."

This fall, things are different. The number at the top of the billing statement is the College Finance number. Admissions has logged over a hundred fewer finance-related calls this term. Students and employees are happier. That's a Quick Win from Students First!

A Quick Win is an immediate improvement identified by Students First! The change in the billing statement was based on staff and student feedback gathered over the past few months. Students First! is the first application of process redesign adopted by Lane in 1995 as a way to keep services and operations up to date. A project team examined services to students and recommended changes ranging from "quick wins" to long-term, phased-in changes.

Springfield student awarded \$2,000 scholarship

Lisa Haley of Springfield has won a one-year \$2,000 scholarship from the Jeld-Wen Foundation to attend Lane, reports Foundation Director Joe Farmer. The scholarship is limited to new students with financial need who have demonstrated scholastic achievement and live in a community where a Jeld-Wen facility is located. The local facility is the Northwest Pellet Mills plant in Brownsville.

Haley graduated in June from Springfield High School with a 3.69 grade point average. She plans to major in business at Lane. She was a member of the National Honor Society as a junior and senior, spent four years in student government, lettered in varsity softball for four years, and was selected for the Honorable Mention All League Team as a junior. As a senior, she coordinated and served as captain of the victorious powder puff senior girls football team. She volunteered for Special Olympics, did peer mentoring in local elementary schools, conducted pitching clinics for younger players, conducted campus clothing drives, helped with freshman scheduling, and participated in numerous other school and community activities.

Process redesign meeting schedule change

The Process Redesign Leadership Team meeting scheduled for Friday, Oct. 18 has been canceled, as have other scheduled Leadership Team meetings through November. A new schedule of Leadership Team meetings will be published in a future edition of *The Daily*.

LCC Today interviews "Dining Room" cast

LCC Today interviews Sparky Roberts and cast members from "The Dining Room" on Tuesday and Thursday, Oct. 22 and 24, at 4:45 p.m. on cable 12. Tune in today to see Adonay Vargas Solleiro and Luci Amabisca from High School Relations. LCC Today is produced by Media Arts & Technology students, as is NewsScene, live at 4:30 p.m. on Tuesdays and Thursdays, cable 12.

Renaissance Room menu available by e-mail

Anyone interested in receiving a weekly posting of the Renaissance Room menu at their BeyondMail address can contact Debbie Johnson, ITD, at 2496, or by e-mail. The Renaissance Room opens Oct. 22, serving lunch on Tuesdays and Thursdays; for reservations call 2697.

Recycling survey coming

The LCC Recycling Committee formed last year to address the need for a comprehensive recycling program on campus. To help us understand your recycling needs and concerns, we are asking you to participate in a survey which will arrive in your mailbox about Oct. 18. Please take a moment to fill it out. If you have questions or are interested in participating on the committee or receiving meeting minutes on e-mail, call Rick Venturi at 2101.

Student literary competition information available

League for Innovation 1996/97 Student Literary Competition information is now available from English, Foreign Language & Speech. Categories are short story limited to 3,000 words; poetry limited to 60 lines; and personal essay limited to 2,000 words. Contestants must be enrolled in credit courses and entries must have the signature of a sponsoring instructor. Entry forms and a booklet of last year's winners are available in CEN 448. First prize for each category is \$500. The submission deadline is Friday, Feb. 21, 1997.

ATTACHMENT

Attached to today's Daily is a flyer announcing the Employee Recognition Celebration set for Monday, Oct. 21, from 4-5 p.m., cafeteria.

THANKS

Thanks to everyone who joined us for the Bookstore open house. We're glad you came! Congratulations to the drawing winners: Denise Bernard, M&M denim jacket & LCC hat; Maki Medsumani, stereo; Tracy Koerschgen, LCC hat; Marvin Fulmer, LCC hat; Tina Furgeson & Mary Messal, mugs w/Euphoria chocolate; Vicki Crow: collector tin; Dorothy Bartack, Danielle Kresbone, Beverly Bradbury, Janelle Frazier, Troy Storm, student organizers; Darlene Sherman, baby boom box; Jane Dean, Mark Jensen, Elaine Matchett, Amy Smith, Cindy Hufstader, CD wallets; Tammie Phillips, Nikon camera; Ruth Wren, answering machine.

OFFICE NOTES

Admissions, Records and Veterans will be closed 11:30 a.m.-1 p.m. on Thursday, Oct. 17.

JOBS

- Financial Aid Specialist, Financial Aid, closing 10/21. Open to LCC bargaining unit employees and the public.
- Office Support Specialist, 27 hrs./wk., Mechanical Technologies, closing 10/18. Open to LCC bargaining unit employees.

Workshop

Listen to the role of your anger and the positive message it may send to you. Join us on Monday, Oct. 21 from 10 a.m. to noon in PE 205 with Linda deCaccia.

ADS

FOR SALE: LITTLE GIRLS BALLET/TAP outfits, Capezio/Danskin variety of tights & leotards, fits size 3-4, 2 pr. pink ballet shoes size 10 & 12, sequin & satin recital costume. All for \$25. Black Tap shoes, size 10, \$7. E-mail/call Gail Baker, Science, 2085.

LIKE NEW NORTH FACE ski jacket, Goretex, yellow/black, XL, new \$385, asking \$150. Pat Hansen, Business, 2018, 687-7888.

LOOKING FOR Subaru, Legacy or Impreza, all-wheel or four-wheel drive, station wagon. Would love some safety features, including air bag(s). Would consider '90 to '95 depending on mileage and features. \$10-13,000. Any leads greatly appreciated. Donna Rose, 2722 or 342-7332.

POSTAGE STAMPS: Campus Ministry collects all types of used postage stamps. Please leave 1/4" of paper around the stamp. Also, post cards - the entire card, written or plain, stamped or not; these are sold "as is". Stamps are sent to the Holy Name Sisters who sell them to support their clinics/schools in Africa. Jim Dieringer, Campus Ministry, 2850.

DEADLINE FOR THE DAILY is noon of the day prior to publication on Mondays, Wednesdays and Thursdays, fall through spring. Submissions must be in writing or e-mail. Contact The Daily in ADM 210, phone 2591, fax 744-4170, or e-mail TheDaily@instadv_ma, or aschimj@lanec.edu. Editor is Joan Aschim. Assistant Editor is Angela Miller.

The Daily

Published Mondays, Wednesdays and Thursdays for the staff of Lane Community College

Thursday, October 17, 1996

Edited by Joan Aschim

Today through Saturday


- Managers Forum, Friday, Oct. 18, 8:30-10 a.m., Boardroom.
- Teaching With Style teleconference, Friday, Oct. 18, 11 a.m.-1 p.m., CEN 10. (See next page).
- Recreational Sports Natural High games, volleyball/basketball, Friday, Oct. 18, 7-10 p.m., main gym.
- Recreational Sports ballroom dance, Saturday, Oct. 19, 8-12 p.m., main gym.

Brown bag talk features Mexican labor organizers

There will be a presentation by two members of Mexico's Frente Autentico del Trabajo on Tuesday, Oct. 22 from 11:30 a.m.-1 p.m. in the Boardroom. These labor activists, Matilda Arteaga Zaragoza and Veronica Hernandez, will discuss their involvement in the struggle to establish democratic labor unions outside the control of the Mexican government. They will also address the realities of women's work and organizing in Mexico today. Bring your lunch and join us for this brown bag presentation sponsored by the Women's Program.

Science instructors win NSF grant

The Science Department recently was awarded a National Science Foundation Instructional Laboratory Improvement grant of \$60,234 to develop computer-based instructional activities in non-majors biology. The project is under the direction of faculty members Joseph A. Russin, Richard L. Null, Carrie L. Newell and Gail A. Baker.



Tip: If you have low back pain, bed rest for a day or two is generally better than spending a week in bed. Protracted bed rest may be counter-productive. Most back experts also recommend that you begin to walk as soon as the acute pain subsides.

Needs of disabled students to be discussed

There will be an ADA meeting on Tuesday, Oct. 22, from 3-4 p.m. in PE 205, to discuss current accommodations for disabled students on campus. What works well? What would you like to see changed? We need your input. If you have questions, call Student Health at 2665.

Teleconference aimed at working women

The AMA's 5th Annual Conference for Working Women: Establishing Your Work/Life Agenda, will be shown on Wednesday, Oct. 23, from 10 a.m.-noon in CEN 10. It's free. Panelists will tackle the question, "How can I balance my career and my personal life?" and offer technology as one of the answers. Panelists include CNN founding anchor Mary Alice Williams, who offers herself as living proof of technology's potential to allow working women to meld work and family more successfully. She will be joined by a panel of experts who will examine the problem from different angles. Family-friendly policies, manager-employee communication and simple steps you can take to balance the load will be discussed. At least 30 minutes will be devoted to answering viewer questions. All interested staff are invited to attend. For more information contact Cynde Leathers at 2260.

Statewide cultural diversity institute to be held

The Oregon Community College Cultural Diversity Institute will be held at the Eugene Downtown Athletic Club, November 6-7, sponsored in part by the Western Interstate Council for Higher Education (WICHE). The institute will provide diversity training to interested parties from all 17 Oregon community colleges. Topics include student success, student recruitment and retention, curriculum involvement, and resource development. Registration is \$40 per person including lunch and dinner on Nov. 6. We strongly encourage the participation of all interested staff members. If you have questions, e-mail Greg Evans or Sandra Jones.

Employee award nominations reminder

For those of you who are submitting nomination forms for Classified Employee of the Month, please return completed forms to Julie Baker in Training and Development. Once again nomination forms must be submitted by the 15th of the month to be considered for the following month's award. Thank you. Any questions? Call Vickie McKenna at 2606.

Fourth annual conference on families scheduled

Parenting skills workshops are offered at the Annual Conference on Families on Saturday, Nov. 2, from 9 a.m.-4 p.m., beginning in Performing Arts main theater. Conference sponsors are Saturday Circus, the parent education program at Lane, and the Oregon Society of Individual Psychology. Registration is \$50 and includes lunch. Sponsorships are available for low-income parents and students.

The conference theme is, "Home Improvement: Skills for Building Family Relationships." In addition to the keynote presentation, afternoon sessions will focus on parent-child relationships, divorce, anger management, creativity in the home, parent-teenager relationships, quality family time, and parenting of young children. Keynote speaker is Dr. John Platt, counselor, educator and nationally-known author, speaker and humorist. Other presenters are Carolyn Litty, John Crumbley and John Aarons, Peggy Luke, Don Mihaloew, Dorothy Cruickshank and Betsy Cruickshank, and Jeanne Holmes and Susan Beekman.

Early registration is advised. For a brochure, leave a voice-mail message including name and address at 2234. For more information, including continuing education and academic credit, call conference chairs Carol Lynn Morse at 2234, or Dorothy Cruickshank at 342-2577.

Transitions to celebrate 10 years of helping women

Transitions To Success will celebrate 10 years of helping more than 1,000 women achieve self-sufficiency, at a 10th anniversary open house on Wednesday, Nov. 13, from 12-4:30 p.m. in the Women's Center, CEN 213. About 750 past participants have been invited.

The open house will begin with the presentation of an award to Lane Transit District for providing a group price on bus passes which enabled the program to provide free bus passes to its students. Entertainment, including music by past participants, and refreshments will follow.

Transitions helps displaced homemakers, single parents and other women in transition achieve self-sufficiency through education, training and employment. The program includes a one-term, six-credit class focusing on life-career planning, decision making and goal setting, self-exploration, and esteem building. The program also helps pay for child care, transportation, tuition, fees, and supplies, and offers support groups, individual advising, and follow-up services. Transitions to Success is part of the Women's Program at Lane. For more information, contact Charleen Maclean at 2840.

OFFICE NOTES

Admissions, Records and Veterans will be closed 11:30 a.m.-1 p.m. today.

Financial Aid will be closed Tuesday, Oct. 22. Limited phone service will be available.

Computer Services staff is in training Oct. 21-25. The HP3000, BeyondMail and Netscape will be operating. Phone service is limited to 2245, 2246 and 4155.

JOBS

Financial Aid Specialist, Financial Aid, closing 10/21. Open to LCC bargaining unit employees and the public.

Office Support Specialist, 27 hrs./wk., Mechanical Technologies, closing 10/18. Open to LCC bargaining unit employees.

ADS

IOMEGA ZIP DRIVE, \$149.95 after \$50 mail-in rebate, Bookstore. Offer expires 1/31/97.

CAR FOR SALE: 1979 Datsun 310 Hatchback. Sturdy, 2nd owner, good motor, worn a bit outside, no accidents. Papers on upkeep. \$750? 687-9630 evenings. Brian Zingsheim, Specialized Employment Services, 2714/2100.

APARTMENT FOR RENT: one person, close to LCC/UofO, partially furnished, quiet setting, no pets, no smoking, utilities included. \$525/mo. Buck Arbuckle, home:484-1743, or E,FI&S, 2141.

HOSTS NEEDED for Lane's Co-op Program with Mexico. Cooperative Education will receive two professionals from Mexico during the first five weeks of fall, winter, and spring terms. Host families are needed to provide one or two weeks of housing and two meals a day or to host for a special evening or weekend activity. Only one visitor will be placed with a family at one time. Join these other Lane faculty and staff who have hosted previous professionals and have enjoyed this enriching experience: Tom Birkenhead, Jill McKenny, Cheryl Kempner, Lee Hawthorne, Maxine Frauman, Bob Way, Dixie Mauer-Clemons, Gary and Marilyn Rholls, Ginny Reich, Jack Powell, Joyce Garibay, Dave Sherman, Jane Russell, Linda Myers, and George Alvergue. For more information contact Linda Myers, 2883, or home 344-6483.

DEADLINE FOR THE DAILY is noon of the day prior to publication on Mondays, Wednesdays and Thursdays, fall through spring. Submissions must be in writing or e-mail. Contact The Daily in ADM 210, phone 2591, fax 744-4170, or e-mail The Daily@instadv_ma, or aschijm@lanec.edu. Editor: Joan Aschim. Asst. Editor: Angela Miller.

The Daily

Published Mondays, Wednesdays and Thursdays for the staff of Lane Community College

Monday, October 21, 1996

Edited by Angela Miller

This week:

- Anger: Friend or Foe with Linda deCaccia, today, 10 a.m.-noon, PE 205.
- Employee recognition reception, today, 4-5 p.m. in the cafeteria. Guy Harshbarger, October Classified Employee of the Month, and others will be honored.
- Faculty Council, Thursday, Oct. 24, 3-4:30 p.m., Boardroom.
- 4th Congressional District candidates forum, Wednesday, Oct. 23, 12-1:30 p.m., Boardroom.
- Reception for Roger McAlister, Friday, Oct. 25, 7-9 p.m., Art Department Gallery.

Road closure announced

Eldon Schafer Drive, east entrance to Lane, will be closed Saturday, Nov. 2 from 9 a.m. to 4 p.m. for the OSAA High School State Cross Country Meet. Gonyea Road will remain open, however, ticket sales will occur at that site. If you are working or attending classes that day, please notify the ticket sellers at the entrance. Thanks for your patience and cooperation.

Faculty Council report

Faculty Council met October 10 and discussed the Student Evaluation of Instruction form, which will be available for use this fall. Council reviewed the latest draft of the form and the statement of purpose. A copy of the evaluation form will be distributed to all faculty and department heads. For more information contact Tamara Pinkas or Margaret Bayless. In other business, Dennis Gilbert reported that LCCEA bargaining updates have been distributed to faculty, and the LCCEA is working to get members involved in political action. Council also discussed topics for the 1996-97 academic year and decided to focus on one topic per term.

The next meeting is Thursday, Oct. 24, from 3-4:30 p.m. in the Boardroom. Fred Beisse will lead a discussion on recommendations for improving the grading policies at Lane. If you have suggestions about grading policies, join the discussion or inform your council representative. Council now has 11 departments represented and urges unrepresented departments to send a representative.- *submitted by Kimberly Buchanan*

4th Congressional District candidates forum to be held

A candidates forum for the 4th Congressional District will be held on Wednesday, Oct. 23, from 12-1:30 p.m. in the Boardroom. Candidates will present remarks and take questions from student panelists. Staff and the public are welcome. Participating are Rep. Peter DeFazio, John Newkirk, Tonie Nathan, William Bonville, David Duemler, and Allen Opus. Steve Candee will moderate.

Season tickets for Performing Arts available

Subscribe to the Performing Arts Theater and see three plays for just \$21! Subscriber privileges include: 25 percent savings over adult single-ticket prices; priority-seating; no standing in ticket lines; replacement of lost or stolen tickets; tickets easily exchanged for alternate dates; and tax-deductible receipts provided for unused tickets by giving the ticket office notice prior to the performance. The first performance of the season is A. R. Gurney's *The Dining Room* directed by Sparky Roberts on Oct. 25, 26, and Nov. 1, 2, 8, 9. *The Dining Room* is a funny and touching theatrical tour de force featuring a mosaic of vignettes with six actors playing 58 roles. A whole pattern of American life emerges. The dining room was the traditional hub of home life where families met, ate, talked, fought, and laughed—a place for celebrations, parties and romantic encounters. Other performances this season include *Rashomon* by Fay and Michael Kanin, directed by Patrick Torelle, and *The Playboy Of The Western World* by John Millington Synge, directed by Eileen Kearney. Call the Box Office at 2202 to place your order. VISA or Master Card accepted at no additional charge.

Filing insurance claims

Most of the time, the insurance forms needed to file a claim for payment of medical services can be completed in the admitting office of your doctor or hospital. Your identification card will have the group number and social security number on it. After services have been completed, the doctor's office or hospital office will send the claim directly to the insurance company. If you receive a statement that has not been billed to the insurance company, write your social security number and group number on the statement and send the statement to the insurance company.

Former art department chair to show watercolor paintings

Watercolor paintings by Roger McAlister, former chair of Art and Applied Design, will be on display October 21-November 8 in the Art Department Gallery. The paintings, all done in transparent watercolor, were completed for the most part in the past two years. A reception for the artist will be held on Friday, Oct. 25, from 7-9 p.m. in the gallery. Gallery hours are Monday-Thursday, 8 a.m.-10 p.m. and Friday, 8 a.m.-5 p.m. For more information, call 2409.

Nutritional analysis provided



This seminar is sponsored by the Fitness Education Center and is open to all Lane students and staff. Anyone enrolled in fitness education this term will be credited one workout visit for each seminar attended. Take a look at the how your diet really breaks down with the most advanced nutritional analysis tool on the market. Call Patrick Lanning at 2552 and leave your name, extension number, department, and which seminar you wish to attend (Wednesday, Nov. 6, 4 p.m. or Thursday, Nov. 7, 2:30 p.m.). Those enrolling will be sent an assessment form. Forms need to be requested before October 23 and returned by October 29 to be analyzed for the review session. The cost for this type of service is typically about \$50; you will receive it free!

High school staff invited to Lane

The Annual High School Staff Assembly is planned for Thursday, Nov. 21 on the main campus. Each year approximately 40 high school career staff, counselors and parent advisors visit our campus for an update on Lane's programs and services. There will be a point of distribution for brochures, literature and hand-outs provided for attendees. If you have materials to share, please send 100 copies to Luci Amabisca, High School/Community Relations, no later than Nov. 15. High school staff unable to attend will receive a packet of materials in the mail.

ATTACHMENT

ATTACHED to today's Daily is election information from the Legislative Action Team.

OFFICE NOTES

The Child Care Resource Connection will be closed Wednesday-Friday, Oct. 23-25, for a statewide conference. Service will resume as usual on Oct. 28.

THANK YOU

Thank you! to all of you wonderful, caring people who sent me cards, flowers, and balloons over the last six months. My last CAT scan showed no new cancer, I'm still working through some of the effects from the treatment and the chicken pox I acquired during that time. I am much stronger and healthier now. I also thank you who sent me cards, balloons and condolences about my brother's death on Oct. 8. I am pleased and proud to be working with such a wonderful group of people. - Wes Chamberlain, Health & PE.

The staff of Child Care Resource Connection would like to extend their appreciation to Carol Burns for her years of dedicated and valuable service to the program and the community we serve. Carol has resigned from her position at CCRC; her last day will be October 24. She is leaving in order to devote more time to her watercolor painting and other interests. Carol has worked for the college for 6-1/2 years. Her first position was with TALN. She has been an integral part of our agency since 1992 and will be greatly missed. Thanks for the many fond memories, Carol!

JOBS

Financial Aid Specialist, Financial Aid, closing today. Open to LCC bargaining unit employees and the public.

ADS

FREE IF YOU TOW AWAY: 1973 Volvo Sedan. Joan Aschim, IA, 2591, or 485-5223.

FOR SALE: Two studded tires mounted on wheels. Size P205/75R14. \$100. Edna Grass, Financial Aid, 2371 or 343-4390.

POETRY WRITING CLASSES: Intro-experienced. Challenging, stimulating, constructive. Small size (10 max. per class). 3 hrs. week/\$50 month. Taught by published writer, Ellen Cantor, English, 2481, 686-2053 or e-mail.

RELIV INTERNATIONAL-These products are guaranteed to change your life! Call Geri Meyers, Counseling, at 747-0429 or 2296 for more information.

MY SON BOUGHT THE WRONG SIZE--like new, men's XL Northface ski jacket, yellow/black, goretex, new \$385, asking \$150. Pat Hansen, Business, 2018 or 687-7888.

DEADLINE FOR *THE DAILY* is noon of the day prior to publication on Mondays, Wednesdays and Thursdays, fall through spring. Submissions must be in writing. Contact *The Daily* in ADM 210, phone 2591, fax 744-4170, or e-mail The Daily@instadv_ma, or aschimj@lanecc.edu. Editor is Joan Aschim. Assistant Editor is Angela Miller.

The Daily

Published Mondays, Wednesdays and Thursdays for the staff of Lane Community College

Wednesday, October 23, 1996

Edited by Joan Aschim

Today

- 4th Congressional District candidates forum, 12-1:30 p.m., Boardroom. Staff and the public are welcome. Participating: Rep. Peter DeFazio, John Newkirk, Tonie Nathan, William Bonville, David Duemler, and Allen Opus. Steve Candee will moderate.
- Local races candidates forum, information tables open at 10:30 a.m., candidate remarks at 11 a.m., cafeteria breezeway, sponsored by ASLCC and moderated by ASLCC President Adam Young. Participating: Lane County commissioner candidates Peter Sorenson and Peter Bartel; South Eugene City Council candidates Anne Marie Levis and Bette Taylor; Eugene mayoral candidates Jim Torrey and Jim Weaver.

Board of Education fills vacancy

The Board of Education appointed Marshall Saucedo to its Zone 5 seat on Oct. 16 by unanimous vote. Saucedo directs the Office of Multicultural Affairs at the University of Oregon, a post he has held since 1990. He earned a master of science in human resources and industrial relations in 1994 and a bachelor of science in community service and public affairs in 1981, both from the UO. He is a member of the Latino Coalition, the Centro Latino Americano Board, and has served on numerous other civic organizations. He was born and raised in Colton, CA.

Saucedo told the board he could prioritize needs and balance public policy with fiscal reality. He offered experience with a broad array of higher education and community issues. Lane's greatest challenge, he said, is to meet the diverse needs of its constituents in a time of limited resources.

Students cooking up fall classic

Culinary students present the quarterly Classical Cuisine Dinner on Thursday, November 7, at 6 p.m. in the cafeteria. Their menu features American fare: Pacific seafood bisque with garlic croutons, white cheddar vegetable strudel, roast beef tenderloin with chanterelles, confit of onion and cabernet blueberry sauce, turned Yukon potatoes, braised leeks, Stilton and butter lettuce salad, peach in puff pastry with ginger ice cream. Live music and a wine bar will be available. Tickets are \$14.50 per person. Reservations are required by Nov. 1. Call 2697 to order.



Steering committee members: Shannon Kracht, Continuing Education; Tim Blood, Counseling; Bill Griffiths, Mathematics; Pat Dickover, Computer Services; Nick Cheshire, (co-chair) Computer Services, and Diane Dann (co-chair) and Therese Picado, Institutional Advancement. (Bill Fletcher of Computer Services was on the team before leaving Lane.)

Home page committee wins Schafer awards

The Eldon G. Schafer Endowment for Innovation has awarded \$1,500 in seed-money to the Home Page Steering Committee for development of Lane's home page on the World Wide Web. The Schafer committee has challenged the college to provide matching funds. In addition, the Schafer committee awarded the annual \$250 Pat-On-The-Back Award to the home page team for its hard work. The home page team worked without a budget to produce a comprehensive and information-rich web site which launched September 1995. New pages and features are

continually being added and refined. The team has since changed its name to the Web Site Steering Committee. Lucy Schafer Kinsman chairs the endowment committee. The endowment was established in honor of her late husband who served as LCC president from 1970-85.

Athletic Hall of Fame nominations sought

Health and Physical Education and Athletics staff seek Hall of Fame nominations. Eligible are athletes who played at least 10 years ago, coaches or support people, who have made contributions to Lane's athletic program. Contact Athletics at 2215 or stop by H&PE 204 for nomination forms.

The Learning Times seeks submissions

The Learning Times staff development newsletter winter edition is in production. If you have any information about trainings or special events you would like to have considered for inclusion, please send a hard copy to Julie Baker, Training and Development, by November 12.

Student success strategies conference call for proposals

The 12th Annual Student Success Strategies conference is scheduled for February 5-7 at the Red Lion-Jantzen Beach in Portland. The major theme: "Assessment: On the Right Track." If you are interested in presenting in a Sharing Circle or Institutional Interactives, complete a call for proposal form and submit it by October 25 (extensions may be granted). Forms are available through Miriam Thompson, Student Services, 2315; or Shirlee Ford, Counseling, 2322.

Faculty presenters needed for winter workshops

Like to share your creativity with colleagues and have some fun? The Faculty Professional Development Team is looking for interested faculty to share their skills winter term in individual or group presentations on the following topics: Photoshop and Textbridge, use of humor, games, stories and drama in teaching, and student motivation strategies. Stipends are available. Respond by 5 p.m. on October 29 to Mary Schreiber by e-mail, or Carmel Decroos at 2638.

Fitness seminar on Therabands offered



A free Theraband exercise and rehabilitation seminar with David Walker will be presented Tuesday, Oct. 29 at 1 p.m., or Wednesday, October 30 at 3 p.m., both in PE 115. All participants will receive a free Theraband worth \$15. This seminar is sponsored by the Fitness Education Center and is open to all students and staff. Anyone enrolled in fitness education this term will be credited one workout visit for each seminar attended. For more information, call the FEC at 2058.

Road to be closed

Eldon Schafer Drive, east entrance to Lane, will be closed Saturday, Nov. 2 from 9 a.m. to 4 p.m. for the OSAA High School State Cross Country Meet. Gonyea Road will remain open, however, ticket sales will occur at that site. If you are working or attending classes that day, please notify the ticket sellers at the entrance. Thanks for your patience and cooperation.

OFFICE NOTES

- Child Care Resource Connection closed Oct. 23-25. Service resumes October 28.
- Full-time Counseling staff will attend in-service on October 25. Part-time staff will provide services in the Counseling & Advising Center, Testing Office, and Career Information Center.

ADS

WANTED: USED IBM compatible PC (386 or 486). Can pay up to \$500. Ruth Wren, Soc. Sci., 2066.

CONDO WITH CHARACTER for rent: 2 bedroom, 2 bath, garage, weightlifting room and spa on premises, no pets, near Sony. \$650/mo. Evelyn Nagy, LEAP, 2947 or 485-3744.

FOR SALE: 1989 GMC SAFARI VAN, \$8,500. 40,000 miles, bayonet hitch, two new tires on back, 40% left on front tires, power steering, air conditioning, and electric windows. Father-in-law purchased new for fishing trips, well maintained by Wentworth Buick. Selling for estate. Judy Lingo, Business, 2154 or 935-3045.

WANTED: HOUSE TO RENT for returning faculty member and spouse. Prefer two-bedroom house or duplex with yard. Could house-sit until end of

school year. If you know anyone who needs good, non-smoking tenants starting about December 1, please contact Annie Paschall, Business Technologies, at ACPaschall@aol.com.

FOR RENT: FURNISHED APARTMENT near UO, town, LCC busline. No smoking, no pets. Quiet. \$395/month. Clarice Bates, F&HC, 345-3126.

FOR SALE: A-FRAME FUTON, almost new, \$125. Canning jars, golf balls, dust buster, '71 VW Superbeetle. BO. Please call home 345-3706. Kay Gidley, Athletics.

ONLY 3 LEFT: PowerMac 7500 16/1GB, with PowerPC 601 100mhz, video in, fully upgradeable processor card. \$1999 cpu only. Bookstore.

DEADLINE FOR THE DAILY is noon of the day prior to publication on Mondays, Wednesdays and Thursdays, fall through spring. Submissions must be in writing. Contact The Daily in ADM 210, Ext. 2591, fax 744-4170, e-mail The Daily@instadv_ma, or aschimj@lanecc.edu. Editor: Joan Aschim. Assistant Editor: Angela Miller.

The Daily

Published Mondays, Wednesdays and Thursdays for the staff of Lane Community College

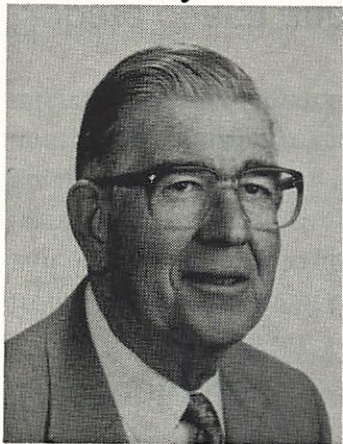
Thursday, October 24, 1996

Edited by Joan Aschim

Today through Saturday

- Faculty Council, today, 3-4:30 p.m., Boardroom.
- Abdominal exercise session, Friday, Oct. 25, 1 p.m., PE 240; or Saturday, Oct. 26, 11 a.m., PE 115.
- Reception for artist Roger McAlister, Friday, Oct. 25, 7-9 p.m., Art Department Gallery.
- Recreational Sports Natural High games and sports, Friday, Oct. 25, 7-10 p.m., main gym; golf scramble at Laurelwood, Friday Oct. 25, 1-4 p.m.; kid's karate clinic, Saturday, Oct. 26, 9-11 a.m., PE 101; and adult self-defense workshop, Saturday, Oct. 26, 9-11 a.m., PE 101.
- "The Dining Room," Friday & Saturday, Oct. 25 & 26, 8 p.m., Performing Arts Theater.
- Skye-Irish Celtic acoustic band, Saturday, Oct. 26, 8 p.m., Media Arts & Technology studio.

Jim Pitney wins statewide board member award



"He keeps us on our toes," says President Jerry Moskus of award-winning board member Jim Pitney.

Jim Pitney of Junction City, member of the Board of Education since 1975, will receive the Howard Cherry Outstanding Community College Board Member Award from the Oregon Community College Association at its annual convention banquet on October 25 in Welches.

The award is given annually to "those who, by their contribution to the community college cause in Oregon, have brought recognition to community colleges statewide."

Pitney is Lane's longest serving board member with his 21-year record. "This is an impressive record of service," says President Jerry Moskus, "but it's not just the longevity, it's the quality of his service that makes him worthy of this award."

Now 76, Pitney is a retired dairy farmer. He and his wife of 53 years, Betty, have four children. The couple lives on the family's Century Farm homesteaded by Pitney's great grandparents. He is active in numerous Junction City community affairs.

Awards also will be given to Sen. Mark Hatfield as Outstanding Community College Friend, and Harvey Bennett, Rogue Community College president, as Outstanding Community College Administrator.

Faculty workshop will address Internet questions

Do you feel you could get more use out of the Internet? The Faculty Professional Development Team has the remedy: a workshop designed to meet individual Internet interests and needs, to be held Tuesday, Nov. 19 at 4 p.m. Faculty already registered for this workshop have asked to learn such items as how to do specific as well as broad spectrum searches, and how to join a list of colleagues worldwide for exchanging information in a given area of expertise. Is there anything you want individual help learning? If so, there's still room for you to join us. For location and to register, RSVP Mary Schreiber via e-mail or call 2263.

Lloyd Rain sees United Way agency help 1,200 people a year



Purchasing Director Lloyd Rain serves on the board for Prevention and Recovery, Northwest, one of the lesser-known United Way agencies. The agency provides substance abuse prevention and recovery services including providing information and counseling to students at five area high schools. The agency also conducts a class for middle school students to build academic and social skills, self-esteem, and positive belonging. Treatment and recovery outpatient programs also are provided by Prevention and Recovery, Northwest. "It has been an eye-opener and an honor for me to serve this agency and know that over 1,200 lives each year are touched and improved by the services we provide," says Rain. "United Way is an integral part of the funding required to maintain these services." For more information about United Way or to contribute, contact Tracy Simms in the President's Office.

Board report

The Board of Education appointed Marshall Saucedo to its Zone 5 seat by unanimous vote at its Oct. 16 meeting (see Oct. 23 *Daily*). In other unanimous action the board approved:

- appointments of Kathleen Arbuckle as nurse practitioner in Student Health, Liz Coleman as instructor/tutoring coordinator in Study Skills, Christine Seifert as instructor in Adult Basic & Secondary Education, and Katherine Swett as nursing instructor in Family & Health Careers
- award of garbage collection contract to Royal Refuse Service of Eugene
- purchase of Heathkit A+ Certification Training Program materials for microcomputer systems service training
- appointment of Pat Riggs-Henson as board liaison to the Senior Companion Program
- appointment of Kathleen Shelley as board liaison to the Lane Regional Workforce Quality Council
- resolutions honoring Eugene Water and Electric Board, Springfield Utility Board, and Blachley Lane Electric Cooperative for their support of the Energy Management Program
- resolution opposing Measure 47 "cut and cap" property tax initiative
- changing the current EMT program from a noncredit certificate program to a credit associate of applied science two-year program

The board also applauded member Jim Pitney, who will receive the prestigious Howard Cherry Outstanding Community College Board Member Award (see related story).

Abdominal exercises to be demonstrated



The Fitness Education Center is sponsoring an abdominal exercise learn-by-doing session with Grady O'Connor on Friday, Oct. 25, from 1-1:45 p.m. in PE 240; or Saturday, Oct. 26, 11-11:45 a.m. in PE 115. Participants will learn several new exercise routines to strengthen abdominal and lower back muscles. Do's and don'ts will be discussed. All students and employees are welcome; those enrolled in fitness education will be credited for one

workout visit for each seminar attended. For more information call 2058.

Teleconference

"A Workout for Your Mind" with Jennifer James, Ph.D., will be shown on Thursday, Oct. 31, from 10 a.m.-12 noon in CEN 10. James will present five skills to help you thrive in the new age. She will discuss the need to develop new ways of thinking about technological advances. Participants will learn how to use history and perspective to gain an understanding of where we are and where we are going. Using humorous, relevant and anthropological examples, Dr. James provides the tools needed to understand and manage the magnitude of changes occurring in our increasingly chaotic world. All interested staff are invited to attend. For more information contact Cynde Leathers at 2260.

Debate coach and students booked for "LCC Today"

"LCC Today," the talk show produced by Media Arts & Technology students, will feature debate team coach Dan Berger, and debate team member Alexanne Ralph, on Tuesday and Thursday, Oct. 29 and 31, at 4:45 p.m. on cable channel 12. Also tune in to "LCC NewsScene," live at 4:30 p.m., same days and channel.

OFFICE NOTES

- Child Care Resource Connection closed Oct. 23-25. Service resumes October 28.
- Counseling Department has limited service Friday, Oct. 25, due to in-service.

ADS

SUPER SINGLE WATERBED with six drawers and big, fancy, mirrored headboard with shelves. \$150 OBO. Holly Graham, KLCC, 2171, or 726-0945.

WANTED: TWO TICKETS to the Oct. 26 Ducks vs. Huskies football game. Angela Miller, IA, 2268.

BEAUTIFUL WEDDING RING SET: Half-carat diamond ring with interlocking 14k gold band. Jeweler's appraisal, \$1800. Asking \$999. Ellice Leichter, T&D, 2023.

WHAT PERCENTAGE of time each day would you say women spend their TV viewing time watching

news? We're trying to settle an argument and have a sack of oats riding on the outcome. E-mail your opinion to LUCI M AMABISCA@ADMIS_MA. (Luci Amabisca, Admsns., and Joan Aschim, IA).

ELDERLY LADY needs to rent housing near the Easter Seal Pool, preferably a small house, duplex or apartment in house. Dora Jolley, Senior Companion Program, 461-4019.

WANTED: USED IBM compatible PC (386 or 486). Can pay up to \$500. Ruth Wren, Soc. Sci., 2066.

DEADLINE FOR THE DAILY is noon of the day prior to publication on Mondays, Wednesdays and Thursdays. Submissions must be in writing. Contact The Daily in ADM 210, Ext. 2591, fax 744-4170, e-mail The Daily@instadv_ma, or aschimj@lanec.edu. Editor: Joan Aschim. Assistant Editor: Angela Miller.



The Daily

Published Mondays, Wednesdays and Thursdays for the staff of Lane Community College

Monday, October 28, 1996

Edited by Angela Miller

This week:

- William Boyer, Tuesday, Oct. 29, 11:40 a.m.-12:50 p.m., CEN 401. (See below)
- Student Services Division Strategic Session, Wednesday, Oct. 30, 9-11 a.m., Boardroom.
- TRIO Grant cake & coffee, Wednesday, Oct. 30, 2-4 p.m., 2nd floor ADM.
- Resource Development Group, Thursday, Oct. 31, 8:30-9:30 a.m., PE 205. Halloween costumes optional.
- "A Workout for Your Mind With Jennifer James, Ph.D.", Thursday, Oct. 31, 10 a.m.-noon, CEN 10. No charge.
- Deadline: 1996/97 faculty level change requests due Thursday, Oct. 31, by 5 p.m., Personnel.
- "The Dining Room," Friday & Saturday, Nov. 1 & 2, 8 p.m., Performing Arts Theatre.
- Eldon Schafer Drive, east entrance to Lane, closed Saturday, Nov. 2, 9 a.m. to 4 p.m.

President schedules open hours

President Jerry Moskus will hold open office hours on Thursday, Dec. 5 from 2-4 p.m. Schedule your 15-minute session by calling the President's Office at 2200.

Faculty invited to share critical thinking strategies

On Wednesday, October 30, from 3-5 p.m. in IT 201, faculty in a variety of programs will discuss ways to incorporate critical thinking in classroom and curriculum. There will be informal sharing in group discussions as well as demonstrations of strategies that work. Faculty are invited to bring their problems and ideas and enjoy cappuccino as they explore critical thinking—the state of the art at LCC.

Discussion explores serving the academically disadvantaged

How should Lane serve its population of academically disadvantaged students—now, and in coming years? That's the topic for the first Student Services Division Strategic Session, scheduled for Wednesday, Oct. 30 from 9 to 11 a.m. in the Boardroom.

This year the division will organize monthly strategic sessions to review important topics, ideas and issues affecting Student Services and other college operations. The sessions will be open to the college community.

Counselor Phyllis Geyer will chair the first session, asking invited panelists to describe the current challenges in serving academically disadvantaged students—those who come to Lane with skills below those necessary to succeed in college level classes.

"There are a number of issues around this topic that need to be resolved before the next registration period, or at least before the catalog is published, if we do decide on policy changes," says Geyer. "At present, we seem to be getting an increasing number of students for whom we do not currently have resources in place. This problem has been exacerbated by some recent changes in the Adult Basic Education program and an increased number of referrals from local high schools of students considered to be developmentally delayed."

Panel members will include Leigh-Alice Petty, Disability Services; Leslie Rasor, Adult Basic Education; Pat John, Study Skills; Carolyn Litty, Counseling; Greg Fishwick, Educational Reform; and Linda DeWitt, Financial Aid.

Quarterly classical cuisine dinner offers American fare

The quarterly Classical Cuisine Dinner will be presented by culinary students on Thursday, November 7, at 6 p.m. in the cafeteria. The menu offers American fare: Pacific seafood bisque with garlic croutons, white cheddar vegetable strudel, roasted beef tenderloin with chanterelles, confit of onion and cabernet blueberry sauce, turned Yukon potatoes, braised leeks, Stilton and butter lettuce salad, and peach in puff pastry with ginger ice cream. Live music is included and a wine bar will be available. Tickets are \$14.50 per person. Reservations are required by November 1 by calling 2697.

Walking rain or shine



The new Walking Coordinator, David Walker, (no pun intended), says "Yes, we are walking!" Walker is excited to have the opportunity to work with you and help staff achieve their goals. You can meet Walker on Tuesdays and Wednesdays from 12-1 p.m. behind the P.E. Building or on the trails. Other times to meet with Walker can be arranged by 2817. Watch *The Daily* for "Wet Duck Alternative" walking routes.

Staff celebrate submission of TRIO grant proposal

The Office of Student Services will celebrate submitting its TRIO Student Support Services grant proposal with cake and coffee outside the Boardroom in the Administration Building on Wednesday, Oct. 30, from 2 p.m. to 4 p.m. Drop by to be thanked for your work on this mammoth project or to say thanks to your colleagues.

Speaker will discuss war, poverty and ecocide

William Boyer, professor emeritus of the University of Hawaii and author of *America's Future*, will speak in Jerome Garger's Peace and Conflict Studies class on Tuesday, Oct. 29, from 11:40 a.m.-12:50 p.m. in CEN 401. His topic: "Global War, Poverty and Ecocide Systems." Guests are welcome.

Halloween open houses

- The Multicultural Center will hold its annual open house on Thursday, Oct. 31, from 10 a.m.-3 p.m., in CEN 409. Refreshments, music, door prizes, and games will be featured. Halloween costumes and pumpkin carving contests will be held. Enter your carved pumpkin at 12:30 p.m. in the cafeteria; judging will follow at 1:30 p.m., same place. Costumes also will be judged in the cafeteria, at 1 p.m.
- The Lane Writers' Club, Writing Center and the Denali will host a Halloween open house on Thursday, Oct. 31 from 11 a.m.-4 p.m. in the Writing Center's tutor area. There will be goodies, fiction and poetry readings, and refreshments. Readings will begin at 3 p.m.

Award-winning poets speak to Lane Writer's Club

Bill Sweet and Myrna Pena-Reyes, award-winning poets, will speak to Lane's Writers' Club on Tuesday, Oct. 29, at 3 p.m. in CEN 449. Everyone is welcome. There will be refreshments. A brief meeting will follow.

The Writers' Club is open to new members for the 1996/97 academic year. It sponsors professional readings and writing contests, and holds poetry, fiction and essay workshops.

Cooperative Education awarded grant

The Cooperative Education Department has received a \$70,875 grant from the U.S. Department of Labor to share exemplary school-to-work practices developed in Oregon with other states. Lane is one of only five schools nationally to receive such a grant. The project is to conduct workshops in five other states and distribute the "Oregon Work Based Learning Manual for Educators" developed under Lane's leadership. The 150-page manual has been distributed to Oregon high schools and requests for copies are coming in from around the nation. Bob Way chairs the Cooperative Education Department. Lane has the nation's largest co-op education program at a community college, with about 2,000 students and 800 employers participating.

THANKS

Thank you to all the members of the LCC family who expressed their support for me during the recent death of my mother. The cards, phone calls and flowers that you shared with me really meant a lot and helped to lessen my sorrow. I greatly appreciate your kindness! - Linda Fossen, 2315

ADS

FOR SALE: TRASH COMPACTOR, Whirlpool, good condition. Once you have one, you can't get along without one. \$195. Tillie Ulam, Foodsvcs, 746-8786.

FOR SALE: AUTOMATIC NUMBERING MACHINE made by Bates Royall. Great for all your numbering

needs. We paid \$53.95 - selling for \$25. Contact Mary Jo Workman in Co-op Ed at 2203. IS ANYONE FROM LCC going to the "Celebrating Culture" workshop in Wilsonville on Oct. 28, sponsored by Services to Children & Families? Would like a ride or carpool. Jerry Diller, Social Science, 2186, or 484-9507.

DEADLINE FOR *THE DAILY* is noon of the day prior to publication on Mondays, Wednesdays and Thursdays, fall through spring. Submissions must be in writing. Contact *The Daily* in ADM 210, phone 2591, fax 744-4170, or e-mail The Daily@instadv_ma, or aschimj@lanec.edu. Editor is Joan Aschim. Assistant Editor is Angela Miller.

The Daily

Published Mondays, Wednesdays and Thursdays for the staff of Lane Community College

Wednesday, October 30, 1996

Edited by Joan Aschim

Today

- Affirmative Action/Equal Opportunity open house, 8-11 a.m., ADM 122.
- Student Services Division Strategic Session, 9-11 a.m., Boardroom.
- TRIO Grant cake and coffee, 2-4 p.m., 2nd floor ADM.
- Faculty discussion on critical thinking strategies, 3-5 p.m., IT 201.
- Curriculum Approval Committee, 3:15 p.m., Boardroom. If you submitted a course/program for approval, you should be present because your request will be on the agenda.

United Way volunteer impressed with Lane



From Suzanne Ali, United Way Loaned Executive: "Since the beginning of October, I have had the opportunity to visit with 19 Lane employee groups at their staff meetings; by mid-November, I will have met with 13 more. Becoming acquainted with so many of the Lane family has reinforced my own belief that Lane is one of the great resources of our community. Your college offers opportunities to virtually everyone in this area to help them achieve their personal and professional goals.

Tracy Simms and I have tried to reach every employee to give them the opportunity to learn more about United Way's network of caring and to contribute to that effort if they choose to do so. I have found that as people learn more about United Way, they become more and more impressed and amazed at the important work United Way and its agencies accomplish.

If we have somehow missed you.. if you did not receive a pledge card, or if you have not had a chance to attend one of our informational sessions, please call Tracy Simms at 2200 to arrange to do so. Thanks to all of you for your hospitality and a special thank you to those who have joined me in supporting United Way."

Luci Amabisca joins Admissions



Luci Amabisca joined Admissions this fall as High School/Community Relations Coordinator. Her office promotes Lane's programs and services to district high school students, staff and parents, and to the community in general. She and her team of student ambassadors coordinate college and career activities on and off campus, conduct Lane campus tours, make presentations, and provide literature to prospective students. They can be reached at 2688.

Luci began at Lane in 1986 and has worked in federally funded positions as an employment specialist and more recently as student advisor in the Dislocated Worker Program. She also was an employment marketer in Cooperative Education from 1992-94. She has more than 20 years experience in community relations, marketing and job development, including five years at Trend College as the career development teacher.

Luci credits much of what she learned as a team player to "a wonderful circle of friends and coworkers" in Training & Development, where she "learned a lot about open communication and being responsive to change."

Child Care Resource Connection awarded grant

The Child Care Resource Connection received a two-year \$184,000 grant early this fall from the Oregon Department of Human Resources, Welfare Reform Reinvestment Fund. Of the eight recipients of grant funds in Lane County, the grant to CCRC was the largest. The grant will expand access to existing child care referral services, expand provider training and recruitment, and provide referral services to businesses. The expansion of child care resources will aid low-income parents who need child care to join the workforce.

Women's Center fall open house

The annual Women's Center fall open house takes place on Halloween again this year. Drop in for hot cider and Halloween treats this Thursday, Oct. 31, between 10 a.m. and 2 p.m. in CEN 213. Wear a costume if you dare!

Faculty grade policy recommendations available

Faculty Council on October 24 discussed several possible changes to current policies on grades. A summary of six recommended changes was e-mailed to faculty on Friday for review and comment. If you do not receive e-mail, and have an interest in grade policies, please contact Fred Beisse, CIT Department, at 2294 and request a copy of the recommendations.

International students to hold fall student dance

Lane international students will sponsor a student dance on Saturday, Nov. 16, 8 p.m.-midnight, in the main gym. Admission is \$5. Steve Lemlin will play jitterbug, swing, macarena, techno, pop, and international music for dancing. He'll also take requests. The event is open to the public. Tickets may be purchased in CEN 414 from 10 a.m.-4 p.m. weekdays, or call Widodo Krisman, Christian Yamakawa or Pat Williams in the International Student Community Program at 2165, or fax 744-4152.

Insurance notice

Your dependent children should be deleted from medical, vision and dental insurance coverage when they no longer qualify as dependents. A dependent child is defined as one who is unmarried, under age 25 or 23 (for Oregon Dental Service), residing with you or a full-time student, and reported as a dependent on your income tax statement. When a dependent loses eligibility status, they may be eligible to continue group insurance coverage by applying within 60 days of the qualifying event and paying the premiums for continuous coverage.

Faculty level change

Faculty Level Change Requests for 1996/97 are due in Personnel Services on October 31 by 5 p.m. Request forms can be picked up in Personnel Services.

Annual advisory committee recognition dinner

The annual advisory committee recognition dinner will be held on Tuesday, Nov. 19, from 5:30-7:30 p.m. Department chairs, assistants and other interested members should plan to attend. For more information call Bob Way or Mary Jo Workman at 2203.

THANKS

I would like to thank all of those who helped to make last week's Fourth Congressional District Candidate Forum such a great success. A "packed" LCC Boardroom (filmed by both KEZI and the Metro stations) listened to all six congressional candidates, representing the Democratic, Republican, Libertarian, Reform, Socialist, and Pacific Parties, respond to questions of our student panel representing OSPIRG, the Women's Center, the Black Student Union, ASLCC, and the Dislocated Workers programs. Were it not for the support and cooperation of Amy Carlson, Kate Barry, Greg Evans, Joe Farmer, the President's Office (especially Tracy, Mary and Laura) and the students and staff who promoted and attended it, this wonderful exercise in democracy would not have been possible. Thanks to all! (PS: The U of O had a similar event that evening at which only four of the candidates attended and only 10 people showed up!) - Steve Candee, Social Science /Co-op Ed

Special thanks to Research and Planning for all their work on our 1996 Graphic Design Career Survey. The first phase of data has been tabulated, formatted and printed and is being distributed to students and members of the

local design community. Almost a year in the making, this project would have been impossible without the help and expertise of Craig, Sylvia and Tara. - Thomas Rubick, Graphic Design Coordinator, Art and Applied Design Department

ADS

I NEED HELP from a seamstress or home sewer who has experience using pleater tape and four-pronged drapery hooks. Call Kaya Stasch, ABSE, at 2056 or 683-8653 (home, eves.) for more details.

LOST: CROSS (brand) BLACK BALLPOINT PEN. Probably dropped between the Northwest parking lot and the Health Tech Building on Tuesday last week. Purchased it two days earlier. Joyce Garibay, F&HC, 2632.

DEADLINE FOR THE DAILY is noon of the day prior to publication on Mondays, Wednesdays and Thursdays. Submissions must be in writing. Contact The Daily in ADM 210, phone 2591, fax 744-4170, e-mail The Daily@instadv_ma, or aschimj@lanecc.edu. Editor is Joan Aschim. Assistant Editor is Angela Miller.
--

The Daily

Published Mondays, Wednesdays and Thursdays for the staff of Lane Community College

Thursday, October 31, 1996

Edited by Angela Miller

Today through Saturday:

- Resource Development Group, today, 8:30-9:30 a.m., PE 205. Halloween costumes optional.
- "A Workout for Your Mind with Jennifer James, Ph.D.", today, 10 a.m.-noon, CEN 10.
- Deadline: 1996/97 faculty level change requests due today, by 5 p.m., Personnel.
- All Saints Day Mass, Friday, Nov. 1, noon, PE 214.
- "The Dining Room," Friday & Saturday, Nov. 1 & 2, 8 p.m., Performing Arts Theatre.
- Grupo Condor, South American/Andean Folk concert, Friday, Nov. 1, 8 p.m., Media Arts and Technology television studio. Tickets \$6 in advance, \$7 at the door.
- Eldon Schafer Drive, east entrance to Lane, closed Saturday, Nov. 2, 9 a.m. to 4 p.m.

Board of Education holds a planning session next week

The Board of Education will conduct a planning work session on Monday, Nov. 4, at 5:30 p.m. in the Boardroom.

Liz Coleman hired as new tutoring coordinator



Liz Coleman was recently hired to coordinate Lane's tutoring services program. Previously, Liz coordinated the Volunteer Tutor Program for ABSE. She trained and placed more than 200 volunteer tutors annually, who were placed either on an individual basis with Lane students, or as assistants in ESL and ABE classrooms.

The tutor coordinator position was created by the members of the Tutor Task Force who worked for two years to bring the coordinated effort together. Last year Cheryl Kempner worked to find funding and set the groundwork for the position.

Currently, free tutoring is provided in the Writing Center, the Math Department, Business Departments for accounting, Social Sciences, Computer Information Technology, Science Resource Room, Foreign Languages,

Multi-Cultural Center, and Performing Arts Music Lab.

Liz will support the coordinators of tutors in each department, train the tutors, create a process for capturing FTE, expand existing tutor services, and assist other departments interested in providing tutorial services. If you currently serve students with tutors, paid or volunteer, or would like to have tutors in your program, contact Liz at 2783 or visit her in CEN 320.

Synergy training available

A Synergy training will be held on Wednesday, Nov. 6, from 1-5 p.m. in FOR 309. This training is required for all individuals who wish to serve on screening and/or interviewing selection committees. Synergy focuses on the "do's and don'ts" of interviewing, selection and hiring. It includes non-discrimination, equal opportunity and affirmative action guidelines, laws and regulations and the potential liabilities for Lane staff in carrying out the law. The training is available to all staff and others wishing to serve on Lane hiring committees.

To make your reservations, call Rachel Kuehl in the Affirmative Action/Equal Opportunity Department at 2040 or reply by e-mail.

Math Department invited to submit proposal

The Math Department was invited to submit a full proposal to the National Science Foundation's Advanced Technological Education program for two-year colleges. The proposed project will develop instructional simulations of industrial applications for statistics. A team of faculty from Math is developing the proposal now, with a December due date.

Mass to be held Friday

All Saints Day Mass will be held on Friday, Nov. 1, beginning at noon in PE 214.

Halloween open houses

- The Multicultural Center will hold its annual open house today, from 10 a.m.-3 p.m. in CEN 409. Refreshments, music, door prizes, and games will be featured. Halloween costumes and pumpkin carving contests will be held. Enter your carved pumpkin at 12:30 p.m. in the cafeteria; judging will follow at 1:30 p.m., same place. Costumes also will be judged in the cafeteria at 1 p.m.
- The Lane Writers' Club, Writing Center and Denali will host a Halloween open house today, from 11 a.m.-4 p.m. in the Writing Center's tutor area. There will be goodies; fiction and poetry readings, and refreshments. Readings will begin at 3 p.m.
- The annual Women's Center fall open house takes place on Halloween again this year. Drop in for hot cider and Halloween treats today between 10 a.m. and 2 p.m. in CEN 213. Wear a costume if you dare!

Faculty team offers hiring opportunity

The Faculty Professional Development Team is looking for winter presenters for workshops on student motivation, using humor, games, stories and drama in teaching, and use of Photoshop and Textbridge software in teaching. Application deadline has been extended to Friday, Nov. 8. Stipend available. Contact Carmel Decroos at 2638 or on e-mail.

Quarterly classical cuisine dinner offers American fare

The quarterly Classical Cuisine Dinner will be presented by culinary students on Thursday, Nov. 7, at 6 p.m. in the cafeteria. The menu offers American fare: Pacific seafood bisque with garlic croutons, white cheddar vegetable strudel, roasted beef tenderloin with chanterelles, confit of onion and cabernet blueberry sauce, turned Yukon potatoes, braised leeks, Stilton and butter lettuce salad, and peach in puff pastry with ginger ice cream. Live music is included and a wine bar will be available. Tickets are \$14.50 per person. Reservations are required by November 1 by calling 2697.

Athletic Hall of Fame nominations sought

Health and Physical Education and Athletics staff seek Hall of Fame nominations. Eligible are athletes who played at least 10 years ago, coaches or support people, who have made contributions to Lane's athletic program. Contact Athletics at 2215 or stop by H&PE 204 for nomination forms.



Wellness food and nutrition tip: Eat fish to help your heart. Eating fish just once or twice a week can significantly reduce the risk of heart attack. The protective value of fish come from the type of polyunsaturated fatty acids, called omega-3's, found in its oil.

THANKS

I would like to thank all of you who have called, said prayers, sent cards, and just stopped by to see how I am doing. It has really meant a lot to me during this most difficult time. Thank you! - Marna Crawford, Campus Ministry

ADS

PORTLAND TRAIL BLAZER 96/97 TICKETS. Two tickets per game, several games still available. Face value of tickets is \$50.40; will sell for \$45 each. Jim Garboden, Mech. Tech., 2168 or 683-2538 evenings.

NASA IS SELLING RAFFLE TICKETS. Items for raffle are located on the second floor Center Building across from Frank Merrills office. Tickets are \$1 each or 6 for \$5. The funds will go toward the purchase of materials for student projects. For information call Frank Merrill at 2238 or Laura Wattier at 2738.

MAC LAPTOP NEEDED: Are you getting ready to trade a Mac Powerbook Series 190 for a new model? I'm interested in buying one for my daughter's college use. Susan Glassow, English, 2140 or 822-6070.

WANT TO RENT: Storage space for one or two classic automobiles. If you have space or know of possibilities, I would like to hear from you. Larry Warford, 2302 or 687-1952 evenings.

GARAGE SALE: Saturday, Nov. 2, 8 a.m.-4 p.m. High chair, playpen, changing table, toys, cloths, food processor, mountain bike, machinist tools. 2690 20th, Springfield. Kim Leeds, Math, 2017.

THE LIBRARY IS HAVING A USED BOOKSALE next Monday-Wednesday, Nov. 4-6 from 9 a.m.-2 p.m. in the lobby of the Center Building, 2nd floor. Prices are 50 cents and \$1, (softbound or hardbound) with some items specially priced. Areas where selection is especially strong include accounting & allied health.

DEADLINE FOR *THE DAILY* is noon of the day prior to publication on Mondays, Wednesdays and Thursdays. Submissions must be in writing. Contact *The Daily* in ADM 210, phone 2591, fax 744-4170, or e-mail TheDaily@instadv_ma, or aschimj@lanecc.edu. Editor is Joan Aschim. Assistant Editor is Angela Miller.