

THE TORCH

Lane Community College, Eugene, Oregon

Oct. 6, 1966

ONE DANCE A TERM PLANNED BY COUNCIL

Student Body President Bob Wimberly opened the first council meeting of the year last Thursday by clarifying the relationship between student council and the student body.

The president defined the oath of office taken by council members, pointing out their obligations to maintain the rules of good conduct. He emphasized that the students are also bound by these rules, since they are equally representative of LCC's character.

The president noted that student council represents the students, functioning through them, not for them. He stated that the council proposes to incorporate the student body to help teach students to serve themselves and to increase student participation; and to develop methods of continuity among students, faculty and student council members.

In accordance with the council's new aims, Wimberly proposed a plan for reorganizing council members' duties. Each representative is to be appointed to one committee. He will be responsible for selecting the committee membership and alter-

nating memberships throughout the year. The alternating is meant to encourage more student involvement, it was explained.

It will be the representative's duty to inform the council of the committee's progress. The plan is intended to lessen the council's mechanical work, leaving more free time for its legislative responsibilities.

Another area of discussion at the meeting centered on LCC's need for social activities. President Wimberly suggested that the school sponsor three major dances a year, one per term. Each of the dances would emphasize a different mode of dress—formal, campus clothes, grubbies. Hootenannies, picnics, and other social activities would fill in between the three dances.

The council asked that students transmit their ideas to the council through their representatives.

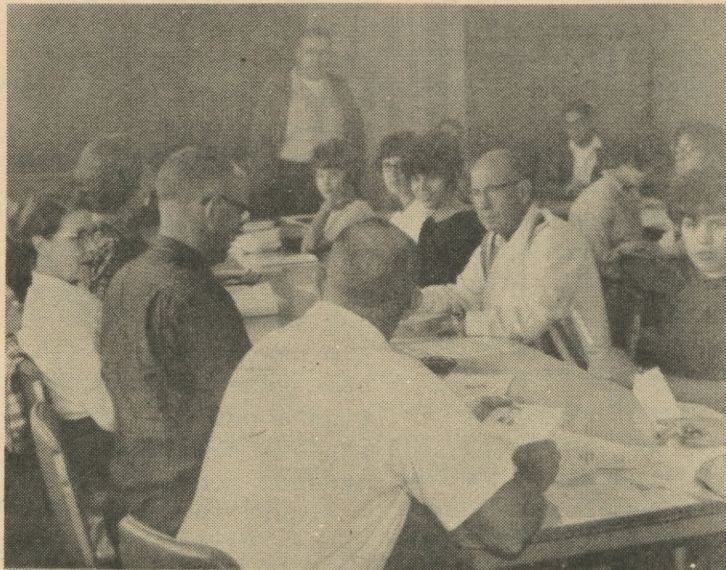
BUS RIDERS SCARCE

LCC's shuttle bus, used to haul students between campuses, is carrying few riders in its second week of a three-week trial period.

I.S. Hakanson, dean of students, said that

the daily average has been between 20 and 30 riders. If students feel it is a necessary service, more should take advantage of it or it will be discontinued, he said.

COUNCIL IN PLANNING SESSION



LCC President Dale Parnell leads discussion at retreat for student leaders and staff. Twenty-six persons made the trip to Yachats.

ENROLLMENT ABOVE PREDICTION

Enrollment in credit programs had reached 2,227 by Monday afternoon, according to Bert Dotson, administrative assistant to the president. He said an additional 1,191 are enrolled in adult education, MDTA and other special classes.

The former total puts the enrollment past the 2,200 figure predicted earlier.



Participants in student activities discussion at the Yachats retreat included Pam Shurtliff and Dean of Instruction William Hein.

counselors; Miss Ada Zinser, bookstore manager; and Larry Romine, student publications advisor.

Guest speaker was Grant Watkinson, former Oregon State University student body president and now a doctoral student in business administration at the University of Oregon.

Activities planning for the school year was done by 15 student leaders and 11 LCC administrators who met for that purpose at Yachats Sept. 23-24.

The trip was termed a "tremendous success" by Student Body President Bob Wimberly.

"If we could have the enthusiasm by all of the student body that was shown by our representatives, we as a student government could not fail," he said.

Those attending included: Wimberly, Darrol Gesh, first vice president; Phyllis Booth, corresponding secretary; Patricia Norris, recording secretary; Gary Keen, treasurer; GiGi Gamble, and Cathy Phillips, student council representatives; Cindy Young, Pam Shurtliff, Wyliada Winderstein, Barbara Bronson, Terri Knutson, Ron Ison and Gary McNab.

Staff members included: Dr. Dale Parnell, president; William Hein, dean of instruction; William

Cox, dean of business affairs; I.S. Hakanson, dean of students; Bert Dotson, administrative assistant to the president; Nile Williams, general education coordinator; Cecil Hodges, chairman of the division of health and physical education; William Wright and Mrs. Frances Howard,

Cont. Col. 4

FM RADIO, UHF TV IN SIGHT FOR LCC

By Donald D. McMunn

LCC will have closed circuit television by Oct. 15, an FM radio station perhaps in a few months and maybe an ultra high frequency educational television station next year.

Application has been made with the Federal Communications Commission for the FM radio station and a reply is expected soon, according to Roger Houghlum, chairman of the electronics division.

He said an application for the UHF TV channel 28 will be made

in a few months. It would be used to transmit educational programs in the Lane County area.

The three communications facilities will be used for instructional purposes, with students acting as technicians.

Wiring of the Eugene campus for closed circuit TV was completed last summer by students. The program is about a year ahead of schedule, Houghlum said. Extension of the system to the Bethel and Springfield campuses is under study.

The closed circuit TV required no transmitter, it was explained. The pictures and sound are sent over coaxial cables to classroom receivers. It is possible to screen as many as three different programs simultaneously on existing equipment, he said.

Three main program sources are motion picture film, video tape recordings and live presentations.

With motion picture film it will be possible for an instructor to request the playing of a film through the classroom

receiver. This can relieve the instructor of the time consuming work with projector and screen and allow the instructor more time for instruction, Houghlum said.

The video tape recorder captures pictures and sound simultaneously and permanently for future use. It could be used privately by instructors to record class presentations so that they can later study their instruction methods and gauge their effectiveness.

Live TV cameras will

be used in two major ways, he said. One will be to cover events of interest to the entire student body, such as student council meetings.

The second is for magnification, which has the effect of putting each student in "front row center" where he can see what would normally be seen by only two or three in a class of 25 or 30. The dental assistant program and the lathe class in the machine shop are expected to be heavy users of the facility.

COLLEGE RULE SHARED

Who runs the college? LCC President Dale Parnell had a fairly surprising answer to his own rhetorical question put to student leaders at the Yachats retreat. "As far as I'm concerned it's a partnership," he said, "between students and administration-faculty."

"We'll give you all the responsibility you will accept," he promised. "We want more participation from more people." He showed he meant what he said by asking Student Body President Bob Wimberly to appoint student members to all standing faculty committees.

Students will serve on the academic council (reviewing credit systems, probation and discipline cases), planning, awards and scholarships, data processing, educational television, curriculum (deciding what should be taught), public events, publications, student activities and even the president's cabinet.

Dr. Parnell's action, a move anathema to most college administrators, is intended to ensure communication between students and the staff. It offers students unusual opportunities in self government. And it clearly demonstrates the faith which the administration has in the students.

It's an auspicious note on which to begin LCC's second year.

QUOTABLE

"I define a problem as dissatisfaction. If you aren't dissatisfied you don't have a problem." ----Grant Watkinson, former OSU student body president.

THE TORCH

Published Thursdays during the school year, except on holidays and during vacation periods and exam weeks, by students of Lane Community College, 200 N. Monroe St., Eugene, Ore. 97402 Views expressed are those of the writers and not necessarily those of the LCC Board of Education, administration or faculty.

Acting Editor ----- Pat Bennett
Acting Advertising ----- Joann Gibbs
Co-managers ----- Gary McNab
Acting Sports Editor ----- Gary McNab
Reporters: Tom Black, Debbie Jo Briggs, Vivian Davis, Susie Fuller, Joann Gibbs, Clareanne Herman, Terri Knutson, Donald McMunn, Vicki Merrill, Gary Nave, Lanny Peterson, Charlotte Reece, Vivian Lee Rosenberger.

Ready for fall fashion?



Kaufman Bros. is.

DOWNTOWN EUGENE • ON CAMPUS • EUGENE HOTEL
AND THE ALL NEW MAINSTREET SPRINGFIELD

THE TORCH
Oct. 6, 1966
PAGE 2

WELCOME EXTENDED

I would like to personally welcome each of you to Lane Community College for the 1966-67 school year. It will be a very busy one for us all and I hope to meet a great number of you on all three campuses throughout the school year. The purpose of this article is not to serve as a welcome as such, but more to provide the new students with some general information about us, the student body and the student council.

First, as you know, we are divided by many miles of pavement and two towns. We are divided by buildings as to divisions and this brought a problem to last year's student government, a problem of disunity. This we as members of the student body do not like and do not want. It is, however, up to us as a student body and as students; we owe it to the institution to unify it as much as possible. An effort by us as such a group relieves many problems that have arisen and will again arise. The idea behind my thinking is to "put in the fire plug before the fire." The student government functions by and with your peers. Our offices (located in the Eugene Campus) are always open to you; meetings are open to anyone also.

Bob Wimberly
Student Body
President

STORE EXPANDS

LCC now has three book store locations: across from the student lounge on the Eugene campus, on the first floor of the Springfield building and between the kitchen and gym at the Bethel campus.

Most books can be obtained at the Eugene and Springfield campuses, but the Bethel store presently contains only supplies.

Book store hours are 8 a.m. to 5 p.m. Monday through Friday and 6:30 p.m. to 8:30 p.m. Monday through Thursday. Miss Ada Zinser is manager of the book stores.

PARTICIPATION URGED

Be more than just part of your environment; help shape that environment. That was the admonition Grant Watkinson had for students who attended the Yachats retreat. The former Oregon State University student body president, now a doctoral student in business at the University of Oregon, underscored the importance of large-scale participation in student government. "You don't exist without it," he said. "You don't have to be an officer. It may only mean taking an interest to the extent that you're at least willing to give your opinion."

Enough of a hint?

FOCUS CLUB TONIGHT

The first meeting of the Focus Club will be tonight at 7:30 at the faculty house on the Springfield campus. The session will include a get-acquainted time and refreshments. It is open to all students interested in photography.

FLYERS SOUGHT

The Flying Titans Club has extended an invitation to students and staff to attend its free ground school and meetings the first and third Tuesday of each month at 7 p.m. in Room 19A on the Eugene Campus.

The major interest of the club is to introduce members to flying, promote knowledge of planes, and have members secure pilots' licenses. The club received its charter last spring.

Club members fly 1966 Cessna 150's at McKenzie Flying Service at a cost of \$18 per term dues, \$7 an hour instructor fee, and a \$6.60 an hour plane rental fee. Initiation fee is \$30.

The next free ground school and meeting is Oct. 18.

LETTERS WELCOME

The Torch welcomes letters from readers. They should be kept brief and are subject to condensation. They must include signature and mailing address, but names will be withheld on request. Send or deliver them to Room 85 on the Bethel campus.

STUDENT HELP ASKED

We as students should be glad to hear that our staff and administration respect each of us as individuals. They assured us at the recent retreat that they are in favor of having student activities of all kinds for your enjoyment while at LCC.

I believe it is through the offering of our talents for others' enjoyment that we find the most rewarding experiences in our lives. We, the student council, need your help in order to make our intramurals, clubs, dances, student get-togethers, newspaper and service projects successful for the

coming year.

Grant Watkinson, former Oregon State University student body president, made it quite clear to us that our opportunities for student activities are unlimited in a new school such as ours, where old ideas and traditions need not prevail. The sky is what we might call our limit. It is your responsibility as students to make some of your ideas and suggestions into living realities. All of us on student council would like to help you promote your ideas and ambitions.

Gary Keen
Student Body
Treasurer

Ask Archie...

Use your school ID to get special prices on gasoline....Also big savings on your brand of motor oil, chemicals, accessories, batteries, milk, eggs and cigarettes. (Who is Archie? -One of LCC educators.)

COPPING'S

6th and Blair

NEW FACULTY

TOTALS 29

Twenty-nine of this year's full-time faculty members are new to LCC, according to the latest count in the offices of administration.

Included are:
William Beals, history; Robert Boettcher, science; Lewis Case, speech; Mrs. Betty Couchman, French; Hugh Cowley, business; William Dellinger, P.E. & Health; Victor Favier, biology; Richard Fraga, biology; Mrs. Dolores Friedt, licensed practical nursing; Dr. Florence Goulding, P. E. & Health; Glenn Heiserman, biology; Mrs. Sheila Juba, English; Paul Malm, history; William Manley, physical science; Robert Maxwell, served at the LCC bar-mechanics; Miss E. Ann Skinner Butte Park. First social event of the new School year, the picnic was held to allow students and faculty from the various campuses to get acquainted, a college spokesman said.

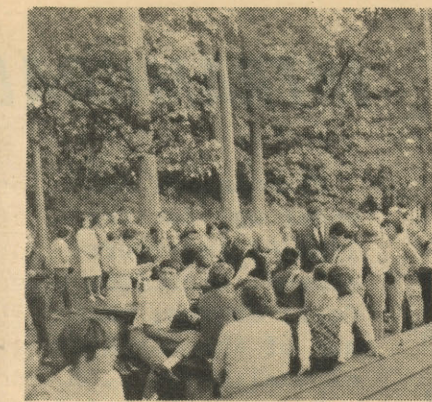
Merlin Ames, instructor in food services, supervised student cooks who prepared and served barbequed beef, cole slaw, baked beans, corn, coffee and soft drinks.

DRAFT FORMS ARE DUE

Men students are reminded that they must complete a 109 Draft Eligibility Form and turn it in at the office of the dean of students, Eugene campus, as soon as possible.

The form is required for men students over 18.

Local Draft Board 13 has designated a full-



Bar-B-Q PULLS CROWD

About 360 meals were served at the LCC bar-beque held Sept. 27 at Newton, licensed practical nursing; Richard Olsen, history; Paul Patrick, farm mechanics; Gilbert Porter, English; Bruce Reid, English; Gary Rholl, business education; Larry Romine journalism; William Ruitter, drafting; Boyd Ryan, math & science; Dr. Richard Schlaadt, P.E. & Health; James Snow, math; Dr. Edward Speth, psychology; Floyd Weitzel, science; Howard Zink, math.

time college transfer student as one who takes not less than 15 quarter hours a term. Men having questions about quarter-hour eligibility should contact the counseling center on the Eugene campus.

Check with your local draft board to determine individual Board requirements.

PICNIC SCENES

Student Council's Checkbook

This year's student activities budget totals \$21,875, according to Gary Keen, student body treasurer.

Income includes \$2,075 balance brought forward, \$2,700 from vending machines, \$300 from staff vending machines, \$150 from dances, \$400 from the student newspaper, \$1,000 from the student yearbook, \$15,000 from the bookstore and \$250 from sale of Titan emblems.

Expenses include \$600 for the student handbook, \$1,200 for the yearbook, \$250 for dances, \$25 for OCCCCA dues, \$750 for the student newspaper, \$500 for conventions and travel, \$100 for office supplies, \$400 for office equipment, \$100 for community projects, \$150 for the spring picnic, \$250 for clubs, \$300 for development of Titan emblems, \$900 for intramurals, \$600 for savings, \$50 for the student activities calendar, \$15,000 for the bookstore, \$300 for the staff fund, \$25 for establishment of an alumni association, and \$175 for blazers.

The two funds balance out.



WOMEN VISIT TOMORROW

By Vicki Merrill

LCC and the Division of Continuing Education will host 200 Eugene area women at a Campus Day tomorrow.

The day is designed to acquaint the visitors with the newest educational and vocational offerings at LCC and to familiarize them with employment opportunities.

The day is to begin at 9 a.m. at the Eugene Elk's Club with introductions by Mistress of ceremonies and Board of Education member, Mrs. Olga Freeman. Dr. Lillian Van Loan, Coordinator of Continuing Education for Women, will greet the guests and outline the plan and purpose of the day.

Two panels are to be featured at the morning session. One, moderated by C. S. Obitz,

dean of adult education, will discuss present day opportunities in adult education. A panel of students presently attending LCC will indicate reasons for choosing particular careers.

Mrs. Mary N. Hilton, deputy director of Women's Bureau, Department of Labor, Washington, D.C., will give the luncheon address on the "Changing World of Women's Work." Mrs. Hilton is a former resident of Junction City and attended the University of Oregon.

Center Open

The Bethel campus learning resource center, though still relatively incomplete in facilities, is open for student use.

Available resource books pertain to classes conducted at Bethel, with the exception of some fiction and biographical works. Only author cards are available at present to help book seekers, as the center is in the process of changing to Library of Congress numbers. Study tables are to be installed.

Reserve books may be used two hours, according to Nina Lewellen, secretary of the center. She said contributions of magazines or suggestions for books to be purchased are welcome.

MUSIC OFFERED

Students interested in music have the opportunity of enrolling in one of the new music classes being offered this year.

Introduction to music and its literature is a three-hour course being offered at the Bethel campus. A choir has been organized and it meets every Monday, Wednesday, and Friday at 11 a.m.

Both classes are taught by Robert D. Norman, a graduate of the University of Southern California and University of Puget Sound Schools of Music.

Anyone interested in joining choir should contact a counselor or Norman.

MAL'S Custom
Tailoring
Custom Made Clothes

20% Off
Ready-Made
Clothes

992 Willamette
Phone 344-4871



bon marche russells

LAST 2 DAYS ----

FAMOUS SPORTSWEAR SALE!

three nationally famous brands of quality sportswear at a fabulous reduction! straight, pleat, a-line skirts; pullover, cardigan, sweaters; shells, suit-tops, 2-piecers. (Any 2 pieces 15.00)

A-LINE WOOL SHIFTS - ST. FLOOR

herringbones, plaids, solid colors and heathers; sleeveless, simple jewel neck, semi-fitted body with an emphasis on A-line skirt design! Regular 10.00 to 15.00

YOUR CHOICE

SKIRTS, SWEATERS OR SHIFTS!

7.99

PRESIDENT OPPOSES SPORTS SCHOLARSHIPS

Intercollegiate athletic competition, when it comes to LCC, will not bring with it athletic scholarships or extra pay for coaches.

But it may bring free tickets for everybody to all sports contests.

Discussing athletics at the Yachats retreat for student leaders, LCC President Dale Parnell declared himself firmly opposed to the school becoming "a farm team of the University of Oregon" with attendant alumni pressures to win. He said he favors a low-key program designed "to be enjoyed by both spectators and participants."

"I believe in winning as much as anyone. But this doesn't mean we have to produce a Roman colossal every Saturday afternoon."

He said his mind is made up on the scholarships and salary issues but that he is "open to debate" on the free admission question. "They'll have to fire me before I'll change my mind on the first two," he said.

The profit-making motive in athletics is unattractive to him, he said, though he acknowledged that it is "a touchy area. We don't charge admission to the physics class," he said.

Athletics ought to reflect the purposes of the institution, Dr. Parnell said, "not to make money. I lean at this moment toward the Board of Education assuming the entire cost of athletic programs and charging no admission."

He said athletic scholarships would tend to separate the athletes from the rest of the student body, subject them to pressures to win, and provoke sniping between

the academic and athletic departments.

"It's a mistake to pay coaches larger salaries than other teachers," he said. Instead he said he wants "to make coaching part of the regular teaching load."

Intercollegiate sports, however, are not expected to be played at LCC in the near future.

"Right now the Board has a policy that athletics will be limited to intramurals," Dr. Parnell said. "They feel it's something that can wait. But they're receptive to discussion."

He said that student requests for organization of teams will be considered and taken to the Board. "I would recommend starts in areas easiest to do: golf, swimming, track and field."

Basketball might come later. "I think football would be the last intercollegiate program LCC would enter," he said. He suggested that rugby might be considered as an alternative.

THIRD CAMPUS OPENED

Bethel campus, a former elementary school, opened for classes last week as the third major site of LCC.

Located in north Eugene on Bethel Drive, the building is being used for teaching college transfer courses, law enforcement and physical education. Bethel campus has the only P.E. facilities presently available to LCC full time, according to Bert Dotson, administrative assistant to the president.

He said the facility was selected because it is particularly handy for north Eugene, Elmira, and Junction City students. It also was the most adequate building available because it was designed to be used as a school. More than \$3,000 was expended to ready it for student use.

Moving in presented problems during the first days of classes but students reacted cooperatively, Dotson said.

THE TORCH
Oct. 6, 1966
PAGE 4

MANY JOBS AVAILABLE

Are you in need of work to help finance your education?

LCC jobs available include: parking lot attendant, clean up of buildings and grounds, office work, library work, cafeteria work, the student store, and teacher aides.

"Students may qualify for such work if their family incomes do not warrant college expenses and if they are satisfactorily progressing in school," Mrs. Frances Howard said.

Applications and assignments are available through Mrs. Howard, who is a counselor on the Eugene Campus.

A government allotment to employ students to work to assist with college expenses was appropriated so that students who otherwise would not be able to attend can meet expenses, she explained. College transfer students may earn up to \$75 a month and vocational students up to \$45 a month at the rate of \$1.25 per hour. In the summer and during vacations students may work up to 40 hours per week.

Students are currently employed on the Eugene, Bethel, and Springfield campuses.

CAMPUS TAKING SHAPE

By Tom Black

The new campus on West 30th Street in Eugene is beginning to take shape. Groundwork started Aug. 8, according to William Cox, dean of business affairs. The C & H Durbin Construction Co. is undertaking the construction.

The entire campus is situated on a 150-acre lot and the buildings alone will cover 20 acres, "give or take a few," the dean said. "There is more acreage for parking than for buildings," he said.

There will be three parking spaces for every four students. An under ground parking area will be provided for disabled students to enable them to have easy access to classes. This particular parking area will

Planning is well under way for the 1966-67 intramural season, according to Cecil Hodges, chairman of the division of Health and P. E.

Intramural activities for fall term will include flag football, cross country, volleyball, swimming, and handball, he said.

League play for flag football will commence Oct. 15 at

BUSINESS BRISK

Business at the new Study Skills Center is brisk, Director Howard Bird reports.

Last week more than 250 individual contacts were made, he said, with at least 30 persons using the reading facilities daily. The math lab reports up to 30 students a day.

The center is located at 662 Cheshire, adjacent to the Eugene campus. It is open from 8 a.m. to 10 p.m. during the week. Full-time students have a priority on use of the facility. Counselors or instructors often refer students, but people may also walk in on their own, it was indicated.

In addition to Bird, the staff includes: Lee Halberg, math lab instructor; James Ellison, Ruth Stopa and Carmen Collias, reading instructors; and Joyce Ferrar, secretary.

be centralized.

The Learning Resource Center-Student Area will be a three-story structure 280 feet long by 140 feet wide, said Cox. The building will house a library, student study area, a student cafeteria, and a snack and book store.

There will be a student plaza on the ground level which may contain a theatre, and a second level which will allow students to enjoy the Oregon "sun."

The cost of initial construction will be approximately \$14 million and the first phase "must be completed by September of '68," the dean said.

INTRAMURALS STARTING

Willamalane Fields. An eight-team league comprised of teams from each of the intramural regions will compete each Saturday morning for the college flag football championship.

Organizational meetings and team practice will be held for flag football participants Saturday at Willamalane Fields.

A schedule for volleyball and cross country competition will be released in the near future, Hodges said.

Also, there will be an all-LCC swimming meet and an all-college handball tournament scheduled during fall term, he said.

Intramural regional managers are:

- Region
- 1 Springfield
Alan Dannen
- 2 Thurston
Alvin Rackley
- 3 Sheldon
Rick Allison
- 4 North Eugene
Mike Pendleton
- 5 Bethel-J. City
Ron Larsen
- 6 West Lane
Bob Kickner
- 7 South Eugene
Dennis Coker
- 8 South Lane
Paul Brown

Salvation Army Due In Concert

The Salvation Army San Francisco Citadel Band will join with the First Christian Church Choir of Eugene in presenting a musical program here Saturday evening, Oct. 15.

Called "101 Years or Music," the program will be presented in the South Eugene High School auditorium. Tickets are \$1 and are available at The Salvation Army, Eugene Music Company, and Lights for Music in Springfield.

The guest band is somewhat unique in that it is an all brass group. Missing are the reeds and flutes, resulting in a different sound, according to Wilbert A. Rudd, local brigadier for the Salvation Army.

"The limited instrumentation makes necessary a scoring for the individual part which is in many cases more complex than would otherwise be required," he said.

VOLLEYBALL OFFERED

LCC women have been invited to play volleyball this fall, with the games to be played in the gym on the Bethel campus. All women students, women faculty members, and wives of the faculty men are urged to participate.

The first evening of volleyball will be tonight, at 7:30. The second session will be Wednesday, Oct. 12, at 4:40 p.m.