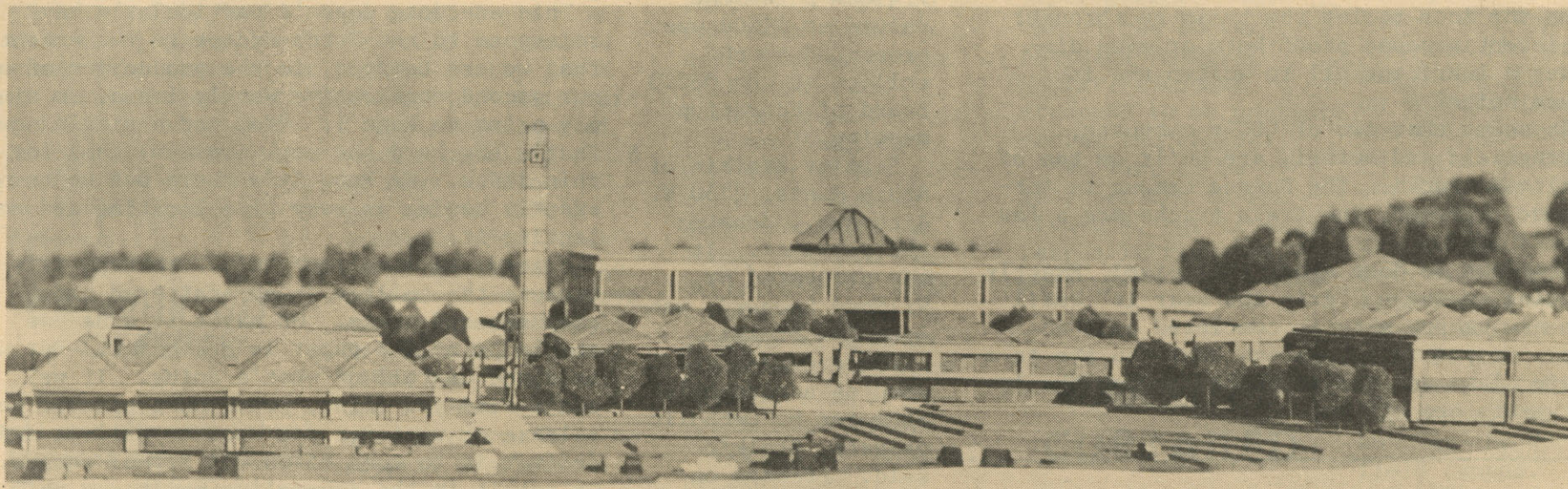


THE TORCH

Lane Community College, Eugene, Oregon

Oct. 13, 1966



New LCC campus will look something like this. View is toward the east, looking from the west entrance. At the left is the medical, dental and home arts

building; behind it is the gym. At left center is the administration building. The two-story building in the center is the student center and library.



Aerial view of new campus looks toward the south. Parking is seen at top of photo. Playfields would be just below bottom of picture. Blank white-roofed buildings are second-stage structures to be erected subsequent to the 1968 buildings. The latter, reading clockwise, include: three mechanics buildings, elec-

tronics building, math and science building, forum, industrial technology building, trades building, business education building, administration building, gym, medical-dental and home arts building, covered tennis courts. At the center is the library learning resource center and student center.

DUNCAN SPEAKS TOMORROW

Congressman Robert Duncan will bring his campaign for a U.S. Senate seat to the campus Friday.

He is to speak to students at 2 p.m. in the studio on the Eugene campus. His topic was not announced.

Nile Williams, coordinator of adult education and special events chairman, said the doors will be opened to the first 100 students to arrive. Duncan is expected to answer questions posed by social science students following his talk.

Duncan is vying with Gov. Mark Hatfield for the seat being vacated by Mrs. Maurine Neuberger.

WEEK'S GRACE GIVEN

The shuttle bus service between campuses will continue to run through next Friday, Oct. 21.

LCC's Board of Education gave it an extra week of life to see if the modest

number of riders will pick up. The board is expected to make a permanent decision about continuance of the bus service at its meeting next Wednesday.

CONSTRUCTION NEARS

Construction of the first 14 buildings on LCC's new campus southeast of Eugene is to begin in the period between next December and July, 1967. To cost more than \$14 million, the buildings are expected to be completed by the fall of 1968.

The campus will rise on a 150-acre

site near the intersection of East 30th Avenue and Interstate 5.

Richard Rhodes, with the architectural firm of Balzhiser, Seder and Rhodes of Eugene--designers for the new campus--outlined the bid and contract schedule which continues through July of 1967.

He said the first-stage campus contracts will be let in five groups, according to the following schedule.

GROUP 1--Airframe and powerplant building, auto and diesel building and machine shop and boiler room building: bid approximately Nov. 1, award contract approximately Dec. 1.

GROUP 2--Industrial technology building, trades building, business education building and administration building: bid Feb. 1, award contract March 1.

GROUP 3--Learning resource center and student center building: bid May 1, award contract June 1.

GROUP 4--Physical education unit No. 1, medical-dental building and multi-purpose outdoor covered physical education building: bid June 1, award contract July 1.

GROUP 5--Electronics building, science building and lecture forum building: bid March 1, award contract April 1.

ENROLLMENT AT 3,901

LCC enrollment climbed this week to 3,901, President Dale Parnell announced.

The total is 1,406 more than the 2,495 who were enrolled at this time last year.

Lower division college transfer students number 1,400 (806 last year); vocational-technical, 829 (572); federal contract special programs, 186 (69); and adult education, 1,486 (1,348).

REFUND DEADLINE FRIDAY

Tomorrow is the last day to return texts to the bookstore and still get a full refund, advises Miss Ada Zinner, manager.

After tomorrow the texts are considered second-hand books, she said. The bookstore then will not buy them until the last week of the term, in preparation for winter quarter sales.

TOOT. CLANG. SCREECH

There goes my train of thought, I mean, there goes a train again.

Have you recently found yourself concentrating intently on your study in class and you were interrupted by a high pitched screech, clang, clang, or a rumble of a train close by? Does it make you want to open the door to let the train go through? To invent a sound proof horn or even discover a lubricant oil to soften the intense noise?

It seems that two of LCC's campuses, Springfield and Bethel, are built on top of railroad tracks. The Eugene campus is fortunate, however, the train tracks are a few blocks away.

What can be done about the noise? Exactly nothing except to "grin and bear it" until the new campus site is completed on 30th ave. Or you could pretend that you are in a music class and the students playing the instruments are off key.--PB

OPPS! STORY NOT IN FOCUS

A misprint in last week's Torch brought a curious camera enthusiast to the Springfield faculty house last Thursday evening.

There was a notice printed on page two of the first issue inviting interested students to Focus club. Through the process of human misunderstanding, it became a camera club announcement. Focus, however, is not a camera club, but a club for all students interested in meeting people and making friends.

Focus stands for Fellowship Of Christian University Students and it is a non-denominational club. It meets every Thursday at 7:30 p.m. at

the Springfield faculty house. Posters on the Eugene and Springfield campuses give details of each meeting.

Roundup Over

The Roundup, previously a weekly publication for students and faculty, will now be a staff newsletter, Administrative Assistant Bert Dotson said.

The Torch is to be published weekly for students, making distribution of the Roundup unnecessary.

Published by the president's office, the Roundup will contain news of concern only to the staff. It will be distributed Mondays.

THE TORCH

Published Thursdays during the school year, except on holidays and during vacation periods and exam weeks, by students of Lane Community College, 200 N. Monroe St., Eugene, Ore. 97402 Views expressed are those of the writers and not necessarily those of the LCC Board of Education, administration or faculty.

Acting Editor.....Pat Bennett
Advertising Manager.....Joann Gibbs
Assistant.....Paul Brown
Sports Editor.....Gary McNabb

Reporters: Tom Black, Debbie Jo Briggs, Vivian Davis, Susie Fuller, Joann Gibbs, Clareanne Herman, Terri Knutson, Donald McMunn, Vicki Merrill, Gary Nave, Lanny Peterson, Charlotte Reece, Vivian Lee Rosenberger.



the Gay Blade

CLOTHES FOR MEN

804 Willamette Street Eugene, Oregon 344-9143

THE TORCH
Oct. 13, 1966
PAGE 2

PARCHMENT IS DONATED

An historical religious parchment valued at \$1200 was presented to the college at the Oct. 3 Board of Education meeting.

Stanley Stolkin of Abbey Rents, 2750 W. 11th Ave., donated the document. It was presented by Wilford Leonard, manager for Stolkin.

The document was used as a ceremonial prompter by Catholic priests, Stolkin said. Printed on sheepskin about 1540, it is an artistically done set of music scales.

Plans are to have it framed and placed on display in the fine arts department.

TEST SCHEDULED

Males who wish to use the selective service examination method of draft deferment should take the Selective Service College Qualifications Test Nov. 18 or 19.

In order to take the test, it is necessary to apply in advance, advises I.S. Hakanson, dean of students.

Application blanks may be picked up in the counselors' offices on all three campuses. They must be postmarked no later than Oct. 21 to be processed, he said.

Education Stressed

The importance of post-high school education for women was stressed by the featured speaker at last Friday's Campus Day for area women.

About 250 visitors heard Mrs. Mary N. Hinton, deputy director of the Women's Bureau of the U.S. Department of Labor, argue that "all changes are reflected in women."

The visitors toured the campus and heard presentations on the LCC educational and vocational offerings. Student members of a panel discussing career choices were Ken Alberts, Marian Hermanson and Linda Buckner.

ARE THERE ANY NEWS?

Horace Greeley, famous editor of the New York Tribune a century ago, is reported to have insisted that "news" is plural and "new" singular. One day he is said to have wired his office: "Are there any news?" To which a staffer wired back: "No, not a single new."

This anecdote doesn't particularly have relevance to the Torch except to the extent that we are tempted, in the production of only our second consecutive weekly issue, to simply print on Page 1: "No, not a single new." That's how hard the news (or new) came for this issue. We know it's there but we're not exactly having an easy time locating and collecting it.

Friend, we need your help. Perhaps it's because the college is so scattered among campuses and towns. Or maybe it's us--we should print the paper in green ink. But we need you to tell us what's doing. If we don't find you first, write us a note or news release or whatever you want to call it and deliver it to Room 85 on the Bethel campus. Or put it in the journalism mailboxes on either the Bethel or Eugene campuses.

Let us hear from you by Monday noon if you want to get your story in the following Thursday's issue. Mechanical limitations make the early deadline necessary, so we will appreciate your cooperation.

We must hear from you if this is to be a "news" rather than "new" paper.

MODEL ON VIEW

Students who want to view the model of the new campus can see it at various business places in coming months.

It is on display in the lobby of the U.S. National Bank in Junction City through tomorrow.

HAD A CHANGE OF ADDRESS?

Students who have changed addresses or telephone numbers since registration are asked to report the changes by calling 342-4931, extension 63 or 69.

The information will be used in a student and campus directory now being prepared, advises Mrs. Pauline Dixon, counselor. She is editing the publication.

It moves Monday to the lobby of the First National Bank in Cottage Grove. From Oct. 24 to 28 it will be at the U.S. National Bank at Cottage Grove.

It is to be in Florence Nov. 28 to Dec. 9; Springfield, Oct. 31 to Nov. 25; Eugene, Dec. 12-Jan. 6. Dates still to be scheduled include those at Creswell, Harrisburg, Lowell, McKenzie, Mapleton, Monroe, Oakridge and Veneta.

MAL'S Custom Tailoring
Custom Made Clothes

20% Off
Ready-Made
Clothes

992 Willamette
Phone 344-4871

**FASHION
BEGINS
WITH THE
FABRIC**

From
**HEATH'S WONDER
FABRICS**

878 Willamette, Eugene, Oregon
Phone 345-6352

Open Friday
and Monday
Nights 'Til 9

NEW SCHEDULING SEEN

A revised and completely new type of class schedule is in the offing for college transfer students starting winter term.

William Hein, dean of instruction, said that the proposal is aimed at a class block of three choices with 1 1/2-hour classes on Monday and Thursday, or Tuesday and Friday, or Wednesday and Saturday.

CAMPUS SITE OFFERED

Florence City Council and Siuslaw School District have offered 20 acres to LCC for a site for a coast branch campus.

The Board of Education is expected to consider the offer at its meeting Wednesday night.

Announcement of the offer was made Monday night at the city council meeting by Mayor Stuart Johnston and Siuslaw Board Chairman Robert Merz.

The property is located at the old airport northwest of Rhododendron Elementary School and adjacent to the site of the projected new Siuslaw High School. The area, presently streetless, is in the vicinity of what would be 21st and 22nd Streets if those streets were extended to the property.

LCC presently holds evening classes at the high school. The Board of Education indicated earlier that it will consider establishing branch campuses when enrollment justifies it.

Classes would start at 7:30 in the morning. "It would even be possible for a student to take 15 hours on two days. He would start at 7:30 and go until 3 p.m. But it would be crowded and it really isn't advisable," Hein said.

The advantages of such scheduling would be many. "Since 50 per cent of LCC's students work, they could conceivably go to school on two days and work accordingly. We could offer one-fifth more classes. The student would also have two days to prepare his lesson. He now has one, so this would be a real advantage," he said.

Technical students would convert to this scheduling spring term.

AWARENESS DEVELOPED

Rumors to the contrary, the Study Skills Center does not offer "remedial" assistance to students, Director Howard Bird said this week.

Rather, its purpose is to "help the student to develop awareness," he said. "He is in competition with himself."

The Center offers professional aid to those who want to remove educational barriers slowing down progress toward their goals, he said. Thus far about 250 people have received assistance in reading, math and spelling.

Full-time students have a priority for use of the facilities, though staff members, part-time students and residents in the college district are welcome. Attendance is on a voluntary basis. No credit is given.

The SSC is located at 662 Cheshire, adjacent to the Eugene campus. It is open week days from 8 a.m. to 10 p.m.

THE TORCH
Oct. 13, 1966
PAGE 3

LOUNGES FURNISHED

Television sets and easy chairs are to be installed in the student lounges on the Springfield and Bethel campuses.

Roger Houglum, chairman of the electronics division, said that a TV set request by Bob Wimberly, student body president, will be granted as soon as possible. The sets will have to be re-conditioned before being put in service, he explained.

William Cox, dean of business services, said that easy chairs for the Springfield and Bethel student lounges are on order and are to arrive anytime during the next few days.

DEEJAYS SCREENED

Closed circuit television programming began Tuesday on the Eugene campus, with disc jockey shows being beamed from the studio to the student lounge.

Roger Houglum, chairman of the electronics division, said other live presentations also will be presented as part of the training for student staff members in television techniques.

Houglum said he has received word that a transmitter for the college's proposed FM radio station is en-route from New Jersey and should arrive late this week or early next week. An application for the station was filed earlier with the Federal Communications Commission.

Classified Ads

Classified advertising may be placed in The Torch at the rate of five cents per word. Minimum charge is 50 cents.

LIBRARY CHANGING SYSTEMS

The library is changing from the Dewey Decimal system to the Library of Congress numbers. Keith Harker, chairman of the Library Learning Resource Center, requests students to be patient during the change.

"We want to be of good service to the students, but it will take a little time,"

stated Harkin.

The Springfield campus library is open from 8 a.m. to 9 p.m. Monday through Friday. At the Bethel and Eugene campuses the hours are 8 a.m. to 9 p.m. on Monday, Wednesday, and Friday, and 8 a.m. to 5 p.m. on Tuesday and Thursday.

"Student librarians are needed," said Harkin. "Anyone interested in working should contact myself or Mrs. Marie Kroeger, catalog librarian. We are both at the Springfield campus."

Two full-time clerks are in charge of the libraries at Bethel and Eugene. Mrs. Nina Lewellen is at Bethel and Miss Pam Marshall is at Eugene.

PARKING CURTAILED

Springfield City Council has eliminated parking on South Fourth Street between C and D Streets near the Springfield campus.

The decision was made Monday night as councilmen wrestled with the problem of congested traffic in the area. Students had been parking on both sides of the narrow street, making it difficult for more than one lane of traffic to move.

The new restriction will make for fewer street parking spots but a better traffic flow and improved access to on-campus parking, it was indicated. Bert Dotson, administrative assistant to the president, said on-campus parking is sufficient to absorb the lost parking spots on the street.

GRADING HALF COMPLETED

Grading of the new campus is more than 50 per cent completed, said William Cox, dean of business services. The three mechanical buildings, airframe and power-plant building, auto and diesel building and machine shop and boiler room building sites are the nearest ready and will be built first.

College officials are presently studying plans for the business education and the administration buildings, he said.



ACCUTRON "411"
Yellow, 10K gold filled case, stainless steel back, waterproof*, shock-protected, sweep second hand, applied figures on dial, alligator lizard strap. \$135.00

Hill's Jewelry Store
6th and Main
Springfield

Willamette Stationers Co.
Office Supplies & Equipment

Drafting Supplies
Study Lamps

Phone 342-5861
510 Oak Street
EUGENE, OREGON



this
new cart
holds a
sockfull of
savings. . . .

stocking news you
need! Spirit, the
pretty sheers made
for service - and
economy - are
cleverly packaged
by twos for extra
wear in every pair!
Go Tawny, Go
Brown and Go Beige
shades. Nylon or
Cantrece stretch
styles.

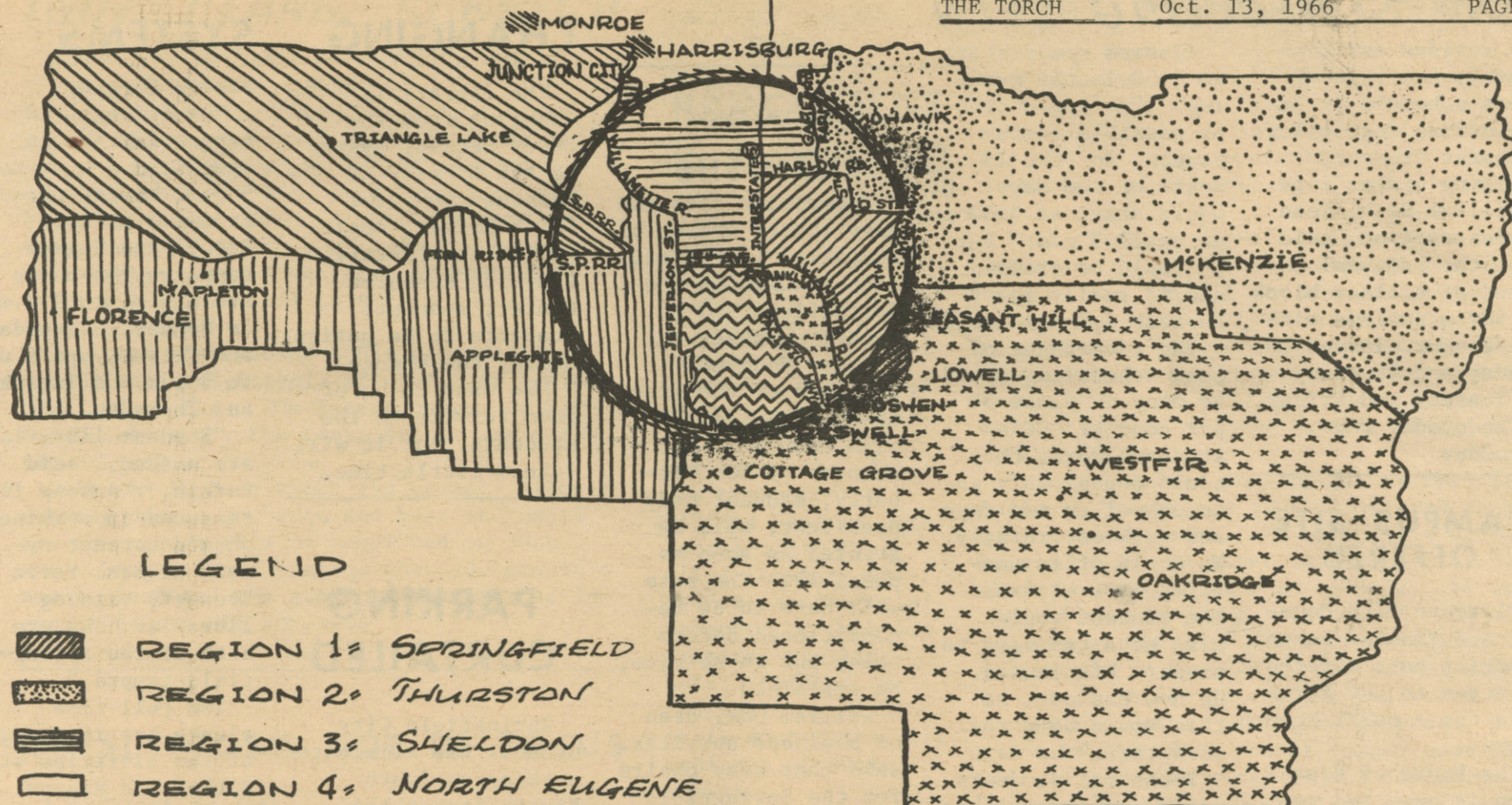
NYLONS
2 PAIR 1.00

CANTRECE
2 PAIR 1.50

**GET IN THE SPIRIT
WITH STEVENS. . .**

teen shop, second floor

bon marche russells



LEGEND

- REGION 1: SPRINGFIELD
 REGION 2: THURSTON
 REGION 3: SHELDON
 REGION 4: NORTH EUGENE
 REGION 5: BETHEL - J.C.
 REGION 6: WESTERN LANE
 REGION 7: SOUTH EUGENE
 REGION 8: SOUTH LANE

GROUND
SCHOOL
OFFERED

Flying Titans members will meet for ground school at 7 p.m. Tuesday in Room 19A on the Eugene campus.

A flying meet may be among future activities "If enough interest is developed," Faculty Advisor German Ellsworth said.

REGIONS DESIGNATED

LCC intramurals are organized by residence regions. If you want to participate, find your region number and then seek out the manager for your region.

Intramural regional managers are:

- 1 Springfield
Alan Dannen

- 2 Thurston
Alvin Rackley
3 Sheldon
Rick Allison
4 North Eugene
Mike Pendleton
5 Bethel-J. City
Ron Larsen
6 West Lane
Bob Kickner
7 South Eugene
Dennis Coker
8 South Lane
Paul Brown

INTRAMURALS STARTING

Flag football intramural season gets underway at 10 a.m. Saturday at Willamalane Park, with defending champion Thurston matched with last year's runner-up North Eugene.

These two squads were evenly matched last year, and this game should be a thriller.

Springfield will play Sheldon on Field "B" to complete the 10 a.m. openers. Immediately following these two games, Bethel will play South Lane, and South Eugene will take on West Lane to complete the first round of play in the flag football inaugural.

Each Saturday morning for the next six weeks, these teams will match their speed and skill to determine the champion. Interest is running high as most of the teams have been practicing throughout the week perfecting their skills.

Saturday, Oct. 15 Willamalane Park
 Field A 10 a.m. North Eugene vs. Thurston
 Field B 10 a.m. Springfield vs. Sheldon
 Field A 11 a.m. Bethel vs. South Lane
 Field B 11 a.m. West Lane vs. South E.

GARY MCNABB: TIME FOR ACTION

Athletic competition, in essence, gives rise to our very concept of democracy and free enterprise. I refer, in particular, to the positive values of our intramural program. Intramural sports have a very different basis for comparison with business and success in business. Surely there is something about the discipline of training, the learning to start at the bottom of an organization and working your way up, the learning of what a team effort can contribute in contrast to a collection of individual efforts that prepare an individual for life in our complex society. There are also other very different reasons for intramural sports. One such reason is fun.

The philosophy of LCC in relation to sports activities, and in the near future inter-collegiate sports, makes a very broad physical education program a must. The fundamental theory behind this philosophy is that every student, regardless of ability, will have a chance to enjoy his or her sport by way of participation. If one could visualize a large sports activities triangle, it would have at its physical education activities, a program for everyone, male and female. Between this broad base and the top would be one intramural program. This area would be for more specialized competition. Again, it would be for male or female but restrictive, to a degree, by the amount of ability the individual possesses. At the very top of this triangle would be Lane Community's, as yet non-existent, inter-

collegiate program. This area would be for individuals that had demonstrated superior athletic prowess perhaps in one of the two before mentioned programs. There are specialized programs for superior students in areas such as math, science, and history, to name only a few. This successful means of organization must be carried through in the Dept. of Athletic Activities.

Immediate attention is being given to football, volleyball, and cross country as our initial intramural programs. The backbone of any such program has to be the students who will take the time to organize teams, perhaps help with the organization of other teams, and make this program really work. The county has been divided into eight large sections from which the various competitive teams are formed. If you know of a group that would be interested in participating: (1) organize a team, (2) elect a captain, (3) call Mr. Hodges at the Bethel Campus for information relating to games etc.

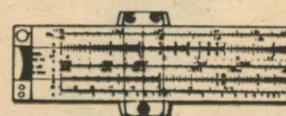
Before any of these intangible murmurings can become actuality it becomes the responsibility of the student body to act. The time for that action is now! A brief statement of purpose concerning our intramural program would show that not all of these activities necessarily have to be athletic. Examples might be: Chess tournaments, debate teams, pingpong, various card tournaments etc. These examples could be extended a good deal more by participation again. The time for action is now!

HAMS
SOUGHT

Anyone interested in forming an amateur radio club should contact Darwin McCarroll in the electronics department on the Eugene campus.

WANTED

A Person to work as lifeguard in the Willamalane Pool. Must have a WSI Certificate --see Mr. Hodges, Bethel Campus, ext. 67.

Big Selection
SLIDE RULES

\$1.95 - \$29.95

VALLEY
Stationery Co.
865 Willamette St.