

Attend the  
Feb. 3 dance

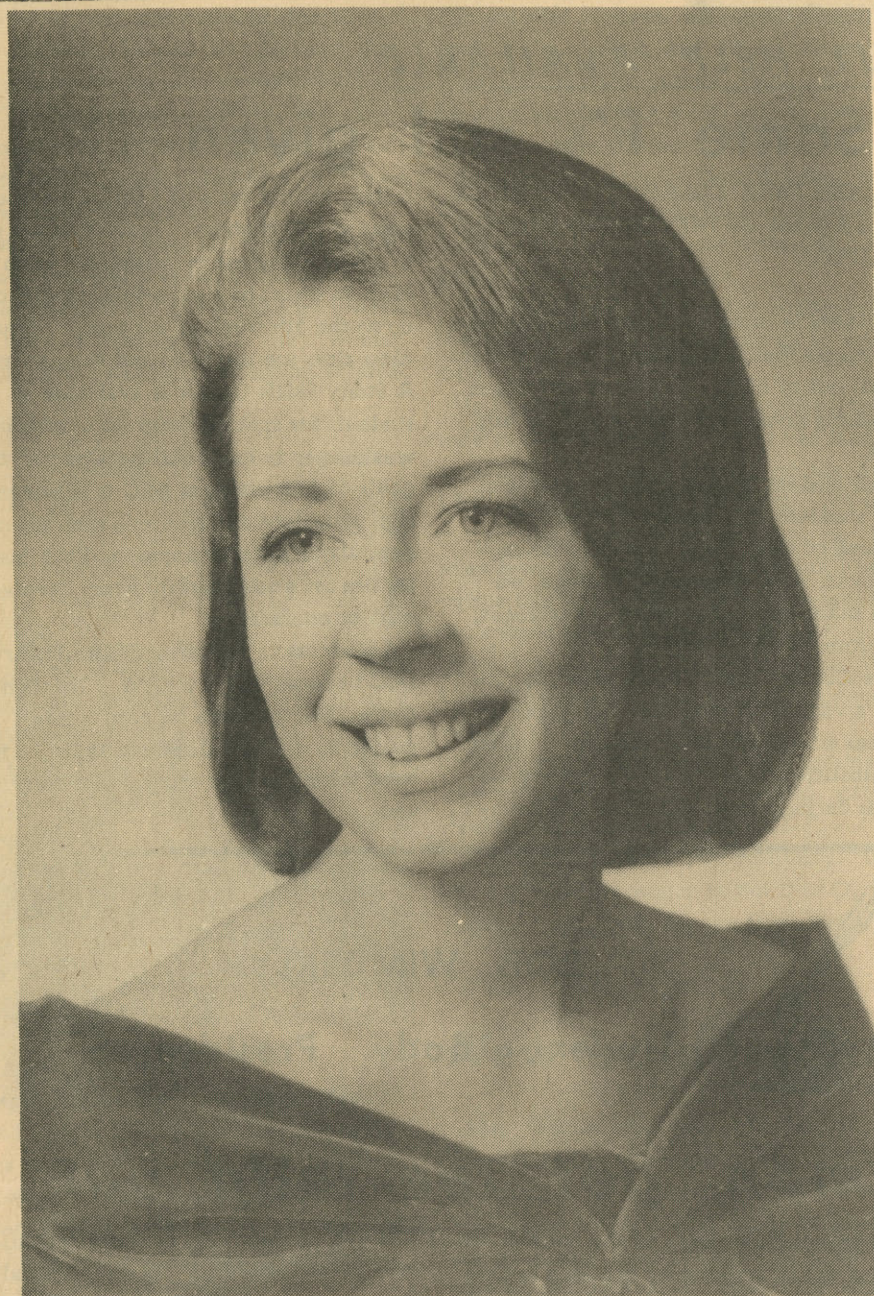
# THE TORCH

Lane Community College, Eugene, Ore.

Dance tickets  
now on sale

2nd year, No. 13

Jan. 26, 1967



ALANA HUMPHREY

**ART MAJOR**

## Alana Humphrey Miss S. contestant

Alana Humphrey, an art major at LCC, is one of the 10 semifinalists in the 1967 Miss Springfield Pageant.

She was named to compete in the Feb. 18 pageant following preliminary judging

She works as a lingerie fashion consultant at JerMarai in Eugene to finance her schooling.

A 1965 graduate of Thurston High School, she is the daughter of Mr. and Mrs. W. G.

### Dance ducats at bookstores

Tickets for the Valentine's dance, "Date With A Dream", will go on sale today in the Eugene and Springfield campus bookstores, announced Phylliss Booth, dance chairman and Willie Winterstein, ticket chairman. The cost is one dollar per couple. The dance is scheduled Friday, Feb. 3 in the King Cole Room of the Eugene Hotel and will begin at 8 p.m. The dance is a semi-formal with entertainment by the Moguls. --Don Miller

### Teller heads student nurses

Georgianne Teller has been elected president of LCC student nurses at Sacred Heart Hospital. Other officers are: Trish Kennedy, vice president; Sheila Steuve, secretary-treasurer; Kathy Gilmour and Mary-Jean Rothenfluch, class representatives.

This is the first year the Sacred Heart School of Nursing has been associated with LCC.

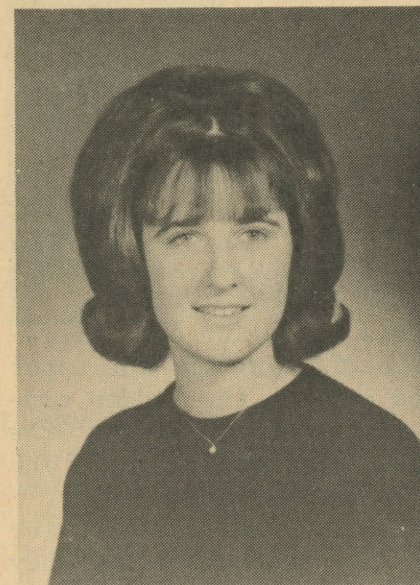
To earn a degree in nursing, the girls must take courses such as anatomy, physiology, English Composition, chemistry, psychology, health, speech, bacteriology, physical education, sociology and nutrition. --Don Miller

### Book sales set record

LCC Bookstores have already earned more gross income this year than they did all of last school year, according to Dean of Administration William Cox.

As of Jan. 17 they had grossed \$111,242. Not all of this sum has been collected, however. Charge accounts total \$12,492. The increased volume means that "we

## GIGI GAMBLE NAMED TO SUCCEED GESH AS VEEP



GIGI GAMBLE



LUCINDA YOUNG

### More Eugene parking sought

By BOB WIMBERLY

GiGi Gamble, Social Science Division representative to the Student Council, has been appointed by the Council as second vice president.

Miss Gamble succeeds Darrol Gesh, who resigned last month. Appointed to succeed Miss Gamble as Social Science Division representative is Lucinda Young.

The Council named Miss Gamble after noting that no other person had indicated interest in the vacated office. She will serve for the remainder of the school year.

In other business, the Council:

- \* Directed a committee headed by Sherm Hopper, Industrial Technology Division representative, to investigate the possibility of graveling the field in back of the Eugene campus. It is felt that there would be ample parking if this area were made available.

- \* Developed a procedure for handling student complaints. Students are to voice their problems to a Council member who will take the subject to the Council. The Council will have one of its members go to the problem source to see what can be done.

- \* Was advised by Phylliss Booth, corresponding secretary, that preparations for the Feb. 3 valentine dance are proceeding smoothly and that tickets will be on sale at the door.

- \* Was advised by Dean of Students I. S. Hakanson that student areas of the campuses are beginning to get unsightly after a reasonable long period of neatness.

- \* Was advised by Nile Williams, chairman of the special events committee, that Treasure Valley Community College students will present a singing and instrumental concert on the Bethel campus on Feb. 22.

- \* Agreed to spend \$360 for the Winter

## LCC FM station dubbed 'KPNW'

By DON MCMUNN

The LCC FM station, KNPW, will be on the air the week of Feb. 6, according to Roger Houghlum, chairman of the Electronics Division.

"I was advised that we may now conduct on-the-air testing of our equipment without further notice to the Federal Communications Commission," Houghlum said.

An engineer from the office of Francis McCann, engineer in charge of the FCC field office in Portland, will be in Eugene next Wednesday or Thursday to conduct the official inspection of the station.

"At the conclusion of his visit," Houghlum explained, "the engineer will send a telegram to the Washington D. C. office of the FCC advising them that the station is ready for normal operation. The FCC will

"We are running from 8:30 a.m. to 3:15 p.m. and the practice will give us a little polish by the time we are on the air."

The program includes music, five minutes of news at noon and recorded programs from Broadway.

United Press International and Associated Press have given permission for the station to use their teletype news. Copy is to be picked up from KORE at Springfield.

### Apply at once for office jobs

Students who desire to take the U. S. Civil Service examination for office aid are urged to act now in order to qualify



Miss Springfield Pageant.

She was named to compete in the Feb. 18 pageant following preliminary judging Sunday at Thurston High School. The 19-year-old third term student demonstrated her artistic talent by showing oil, pencil and fluorescent sketches.

A part-time student this term, she is enrolled in painting, English composition and design. Her career choices are high school art education or commercial art--"advertising, maybe," she says.

# Miss Eugene contestants are sought

The 1967 Miss Eugene Pageant will be held on March 4 at Churchill High School. Entries are now open for contestants.

The winner of the Miss Eugene Pageant will receive over \$1000 in scholarships and merchandise. First and second runner-ups will also receive scholarships. The new Miss Eugene will then travel to Seaside to take part in the Miss Oregon Pageant.

In the last two years the Eugene entry has done very well, officials said. In 1965 Sue Pack became Miss Oregon and last year Diane Lowe was first runner-up.

Any one interested in entering should contact: Alan Kirk, U. S. National Bank, 55 W 29th, Eugene, Oregon, 342-1711 ext. 289.



"ALTHOUGH THESE TESTS REVEAL NO SPECIAL TALENT—THERE IS EVIDENCE YOU HAVE A RESTLESS, PROBING MIND."

ing. A 1965 graduate of Thurston High School, she is the daughter of Mr. and Mrs. W. G. Humphrey, 995 S. 40th St., Springfield.

# Teens seeking library books

DISSTON--Teenagers in the Row River area east of Cottage Grove are attempting to establish a library at the community center.

They're seeking donations of books in any condition, according to John Warden, VISTA volunteer stationed at the center.

Anyone wishing to contribute books may have them picked up by calling 342-4893 in Eugene or 946-1501 in the Cottage Grove area.

The Disston Community Center is maintained through the Community Organization program of the Lane County Youth Project.

# Miss Wilson future student

Miss Sherry Wilson, 17, of Lowell, is not an LCC student, in spite of several reports to the contrary in the Eugene Register-Guard.

The semifinalist in the Feb. 18 Miss Springfield Pageant is, in fact, a senior at Lowell High School, her mother assured The Torch this week.

"But," Mrs. Alfred Wilson said, "she expects to attend LCC next year."

Charge accounts total \$12,492. The increased volume means that "we probably will break even" this school year, Cox said. "At least we shouldn't be in the red." Last year the Bookstores lost about \$9,000. There was one full-time employee last year. This year there are two, along with one half-time person. There have been discussions between student leaders and the college administration regarding the channeling of eventual profits toward the support of student activities. A formal decision has not yet been made, Cox said.

# Draft test deadline near

Applications for the March 11 and 31 and April 8 administrations of the college qualification test are now available at Selective Service System local boards.

Eligible students who intend to take this test should apply at once to the nearest Selective Service local board for an application card and a bulletin of information for the test.

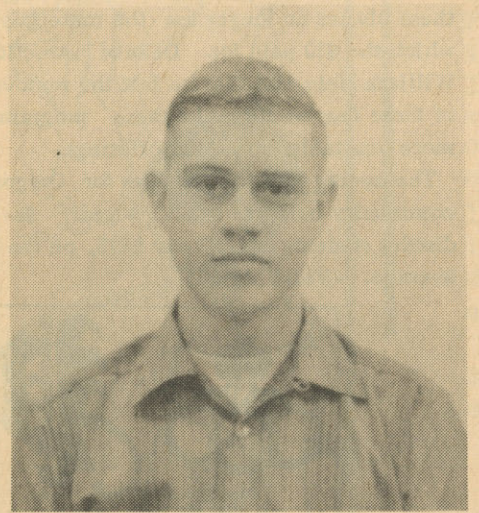
Following instructions in the Bulletin, the student should fill out his application and mail it immediately in the envelope provided to Selective Service Examining Section, Educational Testing Service, P. O. Box 988, Princeton, N. J. 08540. To ensure processing, applications must be postmarked no later than midnight, Feb. 10.

According to Educational Testing Service, which prepares and administers the college qualification test for the Selective Service System, it will be greatly to the student's advantage to file his application at once. By registering early, he stands the best chance of being assigned to the test center he has chosen. Because of the possibility that he may be assigned to any of the testing dates, it is very important that he list a center and center number for every date on which he will be available. Scores on the test will be sent directly to the registrant's local board.

# Plane rides attract 25

About 25 people took advantage Sunday of the free airplane rides offered LCC students and staff by the Flying Titans. "We all had a lot of fun," said President Mike Peterson.

gram to the Washington D. C. Office of the FCC advising them that the station is ready for normal operation. The FCC will then advise by telegram that KNPW is ready for "program test" operation, which means that our normal program schedule can be started. The call letters KLCC and the other four which were requested in order of preference were in blocks of call letters reserved for groups such as the U. S. Coast Guard. The letters KNPW are the call sign picked by the FCC and will be appealed, but will be used until the appeal is completed, Houghlum said. "Meanwhile we are running through 'dry run' programs, checking for content, length and quality. This is exactly the same as being on the air except that we not keep a transmitter log," he continued.



Students who desire to take the U. S. Civil Service examination for office aid are urged to act now in order to qualify for examination for summer jobs. Applications must be received or postmarked, said Counselor John Burns, not later than Feb. 6. Form 5000-AB may be obtained from any Board of U. S. Civil Service Examiners and most main post offices. Applications should be sent to: U. S. Civil Service Commission, Office Aid Desk, Washington, D. C. Clerical opportunities exist in nearly all federal departments and agencies throughout the United States, including Washington, D. C., and Puerto Rico. For further information, contact Burns at the Eugene campus, ext. 44 or 45. -- Terri Knutson



# FOUR-POINTERS

Four-point students during Fall Term included Gary Lemke, left, a cabinet making major, and Ken Henrich, an airframe and powerplant major. The other 14 straight-A students for the last term did not appear Monday to have their photos taken for the Torch.

# Five more paintings grace SSC 'gallery'

Paintings on display at the Study Skills Center, 662 Cheshire St., have increased in number from six to 11. Students and staff are invited to stop by the SSC, located adjacent to the Eugene campus, anytime from 8 a. m. to 10 p. m. to view the paintings. The newest addition is an abstract, done in oil, and created by Mrs. William (Eileen) Hein, wife of the dean of instruction. Different shades of red, orange, green, brown, yellow, and blue have been used, will black outlining the painting. Two other oil paintings by Mrs. Hein include a small village with rolling hills in

the background, and a boating scene picturing two sailboats on a blue, blue lake. Three of Mrs. Hein's watercolors are displayed upstairs. They show a landscape, a farm and a desert. Mrs. Paul (Jo) Fletcher, a local artist who became interested in the center, has loaned the SSC five oil paintings. "The Montana Winter" is a snow scene blending shades of blue and white. "Lost Lake" is a blue lake set in a forest of green trees. Other paintings include an "Old Homestead," the "Upper McKenzie River" and a desert scene. --Charlotte Reece

with present a singing and instrumental concert on the Bethel campus on Feb. 22. \* Agreed to spend \$360 for the Winter Term intramural program. This includes \$308 for rental of basketball courts and payment of referees, \$24 for rental of bowling facilities and \$28 for rental of handball facilities at the YMCA. \* Asked the student activities committee to study further a request for trophies for winners of bowling and handball tournaments. It was felt that trophies ought to be kept by the school rather than given to individuals. \* Noted that name pins worn by Council members have confused some students because of the similarity of the pins to those worn by staff members. The possibility of adding "Council Representative" or similar designations to the name pin is to be investigated.

# Enrollment 50% more

The enrollment for Winter Term, 1967, has reached 4,234. This shows an increase of almost 50 per cent over last year's Winter Term enrollment of 2,923 students. All together, there are 26 more students at LCC this winter than were enrolled during Fall Term, 1966. Adult education gained 40, (1,847 compared to 1,817), and the vocational-technical divisions gained three, (813 from 810). The federal Manpower Development and Training Act (MDTA) program has 112 now, compared to 186 for Fall Term. Lower division collegiate increased from 1,395 to 1,462. In the fall of 1965, LCC opened its doors to 2,795 students. This included 806 in lower division collegiate, 572 in vocational-technical divisions, 69 in MDTA, and 1,348 in adult education. During Winter Term 1966 lower division collegiate had 815, vocational-technical 565, MDTA 65, and adult education 1,478. Spring Term 1966 saw the enrollment decline to 2,729. Lower division collegiate had 809, vocational-technical had 560, MDTA 60, and adult education 1,300. For the fall of 1967, I. S. Hakanson, dean of students, has projected an enrollment of 1,800 lower division collegiate students. One thousand students are expected in the vocational-technical divisions. --Charlotte Reece





ANYBODY HERE?

## Get your date now

The cartoon above by Jim Cisler could well have been drawn to depict the Torch dance last term. Not many came, yet everyone had fun, met a few new people, and enjoyed listening to a great band.

Let's make some changes. You have asked the Student Council for more student activities. Here is your chance. Go to a good dance, featuring the Moguls. It will be a semi-formal that should be lots of fun.

This dance, to be held in the King Cole Room of the Eugene Hotel on the evening of Friday, Feb. 3, lasts from 8:30-12:00, and will not be expensive (\$1 per couple). Refreshments will be served, with tickets sold at the door.

The purpose of the dance is to help people get acquainted and have a good time.

Get your date now--don't keep her waiting.  
--Debbie Jo Briggs

**BOB WIMBERLEY**

## Precedents & Precedents

Whenever a new school is brought into being, there are many new precedents set. In the past year there were many precedents that the class of '66 set for us to follow. Among these are honor rolls of the President and Dean, a newspaper, an annual, and of most importance--a student body with a student government to serve it.

It may justifiably be asked what this year's student government contributed to the list of precedents. It is intended that this article answer that question.

In order to account for one and a half terms of student leadership I will of necessity have to begin at the beginning. Election time last year gave the new student council a hint of what was to come this year. There were some 350 ballots cast

## OUR VERY OWN

### Credibility gap

Cancellation of classes has caused quite a flurry of feathers among LCC's administration. Nearly 20 per cent of the students who registered for Fall Term had to make changes in their schedules. Not all of these were changes caused by cancellation of classes. No one has yet estimated the number of students who have lost class hours because of this problem.

However, the complaints made have stirred up Dean of Instruction William Hein, who met with division chairmen Wednesday afternoon. I expect that the students will get action of this meeting. Up to now personnel in the Dean of Instruction's office have kept the facts tight under their hats. When asked for the number of classes that had been cancelled, the answer was, "we don't release that kind of information."

I realize that this confusion over registration has been embarrassing to the upper echelons. Trying to explain the sudden cancellation of a class to an angry parent or a U. of O. friend can be embarrassing too. The whole mess puts LCC in a bad light.

And yet, I'm sure it would be easier for LCC students to roll with the punches if they did know the facts, if they could realize how bad the problem is, and why the problem is.

A sore point with Sen. Wayne Morse is the credibility gap in America. He claims that President Johnson's press releases are vague, that they are covering up the evidence. This newspaper is beginning to sense the faint hint of a similar credibility gap. Although the administration has not withheld the facts or absolutely refused to release them in the future, it has omitted to release them NOW, when the students need to know.--Vicki Merrill

## Electioneering on horizon

Work has begun on elections for officers and representatives for next year's Student Council. The constitution of the ASLCC states that elections shall be held by the end of the fourth week of Spring Term.

Petitions may be picked up from Jerry Wolfe, first vice president any time after Feb. 2. The qualifications for officers and representatives are listed in the handbook which is available on all campuses.

## TV 'Cannery' in operation

Instructors are being "canned" for the advancement of knowledge.

The Electronics Division is videotaping instructors, who conduct entire lectures before the television camera. These tapes are then filed and referred to when needed for the various courses. All the action is taking place on the Eugene campus where a closed-circuit television network is located.

Roger Houghlum, division chairman, says chemistry and woodworking classes are using lectures recorded at the division facilities. But there is more to come. Houghlum states, "lectures on the humanities and related fields are being planned for the near future."

The department has purchased additional equipment to aid the program.--Jim Cisler

## LOST

LOST: Bethel gym--one St. Christopher's medal. Great sentimental value. Please turn in to The Torch office. J.H.

## FROM OLYMPUS

(What other editors are saying)

The San Mateo at the College of San Mateo, Calif., reported in its Jan. 13 issue how a coed "crept up behind her boy friend, covered his eyes and gave him a big slobbery kiss." Then she discovered it wasn't him at all.

An appreciation of the modern water closet appeared in The Blue Mountaineer, BMCC, Pendleton, in the Jan. 20 issue. Written by Wayne Stevens, it was entitled "Observations Of a White-haired Student Philosopher." The article, reprinted in full, follows:

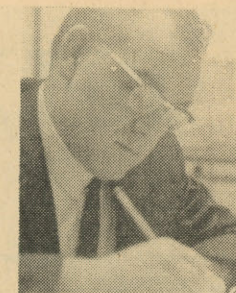
We've come a long ways from the little house with the crescent moon cut in the door and the ace of diamond in each gable.

It's an old timer who, on a winter morning, remembers waiting 'til the final urge before piling out of bed and racing with shirt tail flying to the cold outdoor sanctuary. The Sears Roebuck catalog held no inducement to linger.

But summer time - ah, that was different--mama's honey suckle vines screened the door, and the hum of bees filled the air. You could prop the door open so summer's vagrant breezes would whiff the aroma of the little house through the gabled ace of diamonds, and sit leafing through the catalog.

## president's corner

**Dr. Dale Parnell**



Editor's note: Dr. Parnell will answer questions about the college in this column. Queries should be mailed to the president's office, Eugene campus, or placed in any suggestion box.

## BUT, HELP AVAILABLE

### Some F's still given

Q. DOES LANE COMMUNITY COLLEGE HAVE A GOAL OF PREVENTING STUDENT FAILURE?

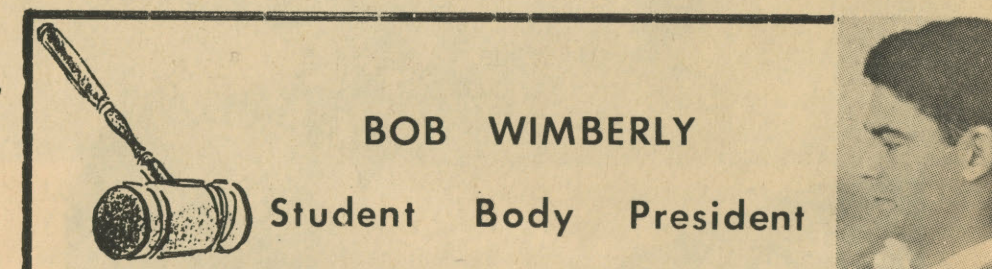
A. There is some confusion resulting from statements that it is difficult for a student to fail out of LCC. This does not mean no failing grades are ever given in any class.

Each student is expected to meet the high standard of quality instruction. "Course content is not watered down." However, as a community college, we have many ways of helping a student, therefore avoiding failure.

The College makes every effort to provide a variety of programs and types of courses which will meet students needs and abilities. There is also a strong emphasis on individual guidance and coun-

selling, with a ratio of 1 full-time counselor to 250 students. Provisions are made to allow a student to withdraw from a class in which he is experiencing difficulty up to the 8th week of the term. Small class sizes are the rule, not the exception. A Study Skills Center is available to all students for specific help to overcome weaknesses in basic skills. One of the goals of instructors at LCC is to watch for sign of failure and counsel with the student about ways to improve. Each instructor has set aside specific hours devoted to student conferences.

A student is not refused admittance to LCC because of a low GPA. Through the counselling program he can often be guided in a better direction than he has been taking so that success can be achieved.



## C'mon, get the lead out

The general consensus of the college students at other community colleges in Oregon is that there is not enough opportunity for students to accept some responsibility from their administrations. Yet, when the opportunity does arrive and present itself, those students who feel so neglected are nowhere to be found. Fellow students, this condition is present not only at other colleges, but also right here in our own backyard.

The matter of responsibility acceptance by the students can only be fully and most graciously sneered at by those who are willing and do express the desire to use the responsibilities that they are given. The matter not only pertains to responsibility in government and classroom studies but also

Eric Von Leiden. All of these activities were poorly attended. In answer to all of the worn out complaints I have heard, I say, 'nuts!' Excuses that place the rejection of your responsibility on other people is of little importance to me. However, it is important to me to see our Student Council spend upwards of \$400 for a semi-formal dance and see a majority of faculty and administration in attendance, with the minority being student council members.

The forthcoming dance is in the benefit of the student body, paid for by their monies, and organized by their people. If the attendance that was present at the last dance is indicative of the semi-formal dance that is scheduled for the third of February, I am totally absolved of the responsibility



# THE TORCH



Distributed Thursdays during the school year, except during vacation periods and exam weeks, by students at Lane Community College, 200 N. Monroe St., Eugene, Ore. 97402. Opinions are those of the writers and not necessarily those of the Board of Education or staff.

Publisher . . . . . Publications Committee  
Members: Bert Dotson, administrative assistant to the president, chairman, Terri Knutson, freshman in elementary education; Debbie Jo Briggs, freshman in journalism; Marge Blood, secretary to Mr. Dotson; Lewis Case, assistant professor of language arts; Pauline Dixon, counselor; Edith Jones, assistant professor of business education; William Manley, assistant professor of math & science; Gilbert Porter, assistant professor of language arts; Larry Romine, assistant professor of journalism.

Co-Editors . . . . . Debbie Jo Briggs  
Vicki Merrill

Advertising Manager . . . . . Joann Gibbs  
Sports Editor . . . . . Gary Nave

Reporters: Tom Black, Jim Cisler, Vivian Kabiser, Terri Knutson, Don McMunn, Don Miller, Jay Peterson, Larry Piquet, Charlotte Reece, Vivian Rosenberger, Sue Sumner, Don Wilt, Bob Wimberly

Production . . . . . Susan Howard  
Charlotte Reece

Circulation Manager . . . . . Larry Wooley  
Photographer . . . . . Greg Morse

lection time last year gave the new student council a hint of what was to come this year. There were some 350 ballots cast among 1,400 eligible voters. Your student body president was unanimously elected with no opposition--the first unanimously elected A. S. B. president--thus showing the amount of help we could expect this year.

This is our major problem, since we're a two year college and one we do not expect to overcome. The officer and the student council representatives that were elected at this time, and a few other students, went on a retreat to Yachats to study some of the problems of the new council.

The retreat worked out so well that we're considering having two retreats per school year.

There have been various reports by your treasurer to the newspaper about the financial status of the student body. The only reason we do not have one now is because data is presently unavailable in time for this article. It will be the policy starting next term, that a monthly record be published in The Torch.

There is a weekly article from the president in The Torch. There are now students serving on faculty committees. We are presently working on how to keep the doors open to our college for an expected 600 students.

The precedents that are growing in numbers by leaps and bounds will be looked upon in later years as real attributes to the classes of '66, '67, '68. I am proud to be a part of these things as I am sure you are too.

and representatives are listed in the handbook which is available on all campuses. If further information is required, contact Bob Wimberly, student body president, through The Torch mailbox, student body mailbox, or by personal contact in the halls of any of the campuses. --Bob Wimberly

## Special fees are eliminated

The \$10 fees currently being charged for radio communications, diesel, and auto body and fender classes have been eliminated for the 1967-68 school year.

This action, taken by the Board of Education came after it was discovered that these classes no longer use the materials which the \$10 paid for. Dean of Instruction William Hein said that he felt the removal of these fees would make these programs more equitable with other offerings.

The average tuition and fees for Oregon community colleges is \$225 a year; in-district students at LCC pay \$195, on the average. --Vicki Merrill

diamonds, and sit leaning through the catalog.

By summer we were generally over to the harness section, and I'd look wishfully at the fine saddles and wish for a pony to go with it. The slick pages were always the last to be used, and they pictured pretty dresses that my sisters used to moon over. We always hoped the new catalog would arrive before we got to the slick pages.

Reminiscence brings sweet nostalgia, but there is hardly a one of us that would trade his modern water closet in its air conditioned room for the little outdoor house.

Funny, how we speak of the good old days. Life is like that.

**MAL'S** Custom Tailoring  
Custom Made Clothes

20% Off  
Ready-Made  
Clothes

992 Willamette  
Phone 344-4871

**Pietro's**  
**Gold Coast**  
**The Family Pizza Parlor**

MINORS WITHOUT PARENTS  
PERMITTED ON MONDAY AND TUESDAY

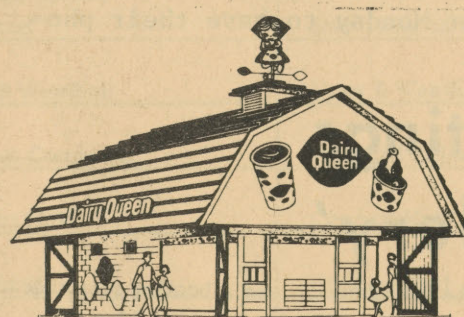
**Pietro's**  
**Pizza Parlor**

OPEN WEDNESDAY THRU SUNDAY

"Sing Along With Sid  
The Banjo Kid"

ORDERS TO GO

PHONE 726-4415



**BETHEL DAIRY QUEEN**

734 Highway 99 North  
EUGENE

2 - 1

DELUXE BURGERS

Saturday Jan. 28th  
ONLY

Buy one regular price  
Second one  
FREE

**EUROPE**

\$450 Round Trip

Fifth Annual  
Charter Flight

Eugene to London June 17  
Amsterdam-home Sept. 15

Via Scheduled Airlines

CALL  
IAIN & BEA COUCHMAN  
344-2196

matter not only pertains to responsibility in government and classroom studies but also to activities that our student body clamours for! It is to those that clamour for more activities that I am addressing this message.

It was my campaign ambition to attempt to sponsor activities for the student body. The activities that are available, I admit, are not of the quantity that we would all like to see. For that I am sorry. Sorry only to those who would participate in these activities. Intramurals are at the apex of the triangle thus far created, with the dane of last term in the only other position that could be called second, tied with the one guest speaker that we have had, Dr.

that is scheduled for the third of February, I am totally absolved of the responsibility of getting students to the function and would naturally feel relieved of my campaign obligations.

The dance next week is only of an immediate nature, but the problem of attendance will again offer itself the opportunity to shine as the representative of the "school spirit" we lack. The next opportunity that comes to mind is an instrumental and singing group that will be on tour from Treasure Valley Community College on Feb. 22. Maybe by then our students will have attended an LCC function and decided that we do have fun at our functions.

**'Date With  
A Dream'**

**GET YOUR TICKETS NOW AT  
EUGENE, SPRINGFIELD  
BOOKSTORES**

**Music By The Moguls  
\$1 PER COUPLE**

**Semi-formal**

Feb. 3  
8p.m. to  
midnight

Eugene Hotel  
King Cole  
Room



# HOUGLUM RADIO PIONEER

By GARY NAVE

Roger Houglum, chairman of the Electronics Division, helped to pioneer the radio industry in Eugene. He was co-founder of KERG and founded KRVM, the first educational FM station in the northwest and 13th to be started in the country. There are now 300 such stations.

"Seems to me as long as I can remember I've been interested in radio and tv. Various adults helped get me started way back in the third of fourth grade. They would give me parts I needed," Houglum related.



ROGER HOUGLUM

A slightly built man, Houglum stands 5' 10" and weighs 150 pounds. He is quite serious about his job, and when discussing it becomes thoughtful and meditative. A teacher of radio for 28 years, his face lights up as he tells about helping others begin their careers in broadcasting.

"Some of my graduates are Dick Cross,

Dale Reed, Russ Doran, and Wendy Ray, all of KUGN. Ray is the news director there and also broadcasts University of Oregon athletic contests. A couple others are Fred Crafts, KERG, and Glen Mitchell, KVAL-TV communication engineer. The greatest satisfaction in this job is getting men like these started."

Houglum was born in Detroit Lakes, Minn., in 1911, but moved with his parents while an infant. He has lived here since, with radio being the center of his life.

"Radio started off to be my hobby," he reminisces, "but it turned out to be my vocation."

He even came into contact with his future wife at a radio station. "I met her (Ladelle) at KORE. She had a program on the station. I happened to drop by one night. We found out we had many friends in common. She even knew my sister. "I don't think I need pursue this any further," Houglum smiled, "you know how it goes from there."

Mrs. Houglum was president of the Very Little Theatre last year and has appeared in various VLT productions.

Houglum, himself a part VLT president, says hobbies he enjoys are "music, gardening and working for the VLT."

The Houglums have two children, Chris, 19, a journalism major at the U of O, and Karen, 17, a South Eugene High junior in-

terested in drama and music.

Houglum is now a new "father" again, the newborn being LCC's new FM radio station, KNPW, soon to be on the air. "Basically students of LCC will do the broadcasting. Most of the programming will be music and news," Houglum informed.

"The music will be from the three-B's to jazz, with lots of show tunes and folk music. I hope we won't become a rock 'n roll station," he continued, "I think Eugene has enough of those."

## Gym remedies are ordered

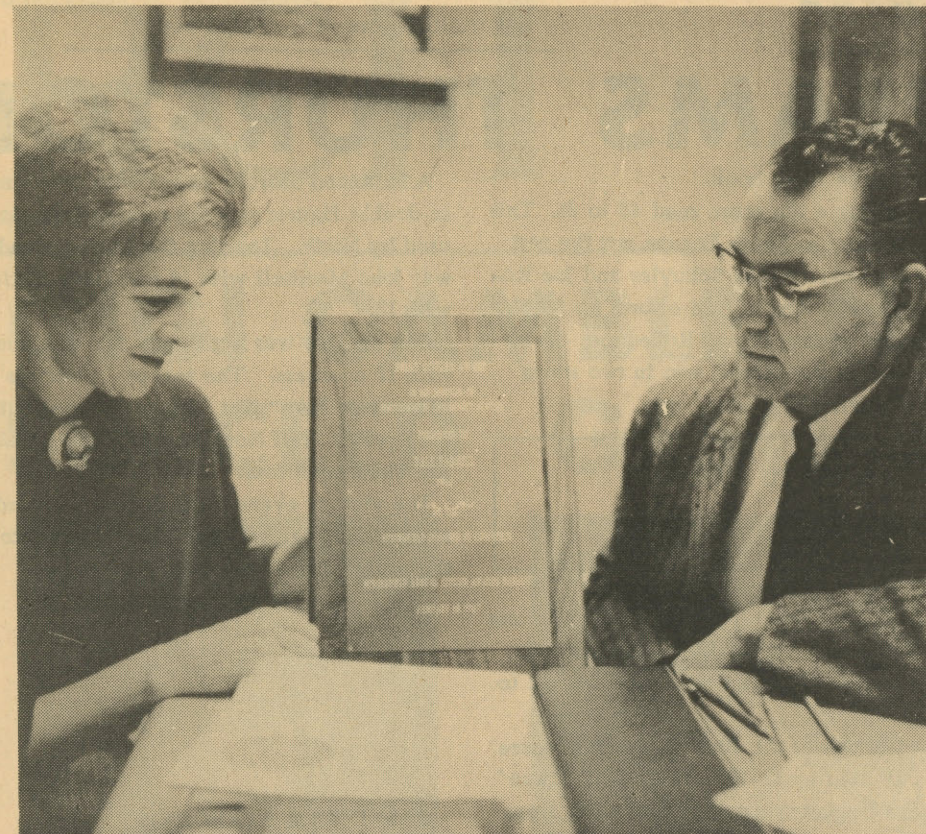
President Dale Parnell has directed that four actions be taken to better conditions for final exams administered at the Bethel gym.

These actions are aimed at alleviating gym odors. Dr. Parnell recommended that (1) the locker room doors be kept closed, (2) that locker rooms be kept cleaner, (3) that gym suits be laundered more often, (4) that the school consider the possible use of exhaust fans in dressing rooms.

The decisions came in answer to a letter written "in accordance with the wishes of the student body" by Bob Wimberly, student body president and addressed to Dr. Parnell and members of the President's Cabinet.

In addition to the odor problem, the letter protested the use of masonite boards and folding chairs. It cited two reasons for dissatisfaction: (1) discomfort, and (2) balancing problems.

The President's Cabinet is continuing to study the comfort problem. --Vicki Merrill



## PLAQUE NOW ON WALL

Plaque awarded Springfield's First Citizen for 1966 is now on wall in office of recipient, LCC President Dale Parnell. Admiring it here with Dr. Parnell is his secretary, Helen Haynie, who worked in cahoots with Springfield Chamber of Commerce in setting up surprise award ceremony last week.

## Student-faculty variety show due in spring

A student-faculty variety (talent) show has been proposed by LCC President Dale Parnell.

This show, to be aired sometime spring term, is now in the planning stages with Robert Norman, lecturer in music, chairman, assisted by Mrs. Virginia DeChaine, lecturer in drama and speech.

The main purposes of this show are to 1) help bring together the three campuses in a central goal--tying together effect, and 2) to raise money for an aid fund, said Dr. Parnell.

This will be a variety show in the old traditional sense, like the "Ziegfeld Folies," according to Norman.

Any and all types of talent will do. The stage band and possibly the chorus will

perform. However, it is hoped that people doing interpretive readings, skits, solos, monologues, magic acts, dancing acts, etc., will sign up to perform.

Auditions will be scheduled for sometime this term. The application for audition appears below. Turn in the completed form to either Norman on the Bethel campus or Mrs. DeChaine on the Springfield campus. --Debbie Jo Briggs

## FREE ADS ARE OFFERED

Non-business classified advertising will be free to members of the LCC family until further notice, the editors have announced.

"We are always looking for ways to help make The Torch a greater service to its readers," co-editors Debbie Jo Briggs and Vicki Merrill said in a joint statement.

Full time and part-time students and staff

## Chocolate is favorite

LCC students like any foods with chocolate or hamburger in them, says Merlin Ames, director of the snack shacks.

As a result the shacks on the Eugene and Bethel campuses have shaped their menus to meet this demand.

Bethel features hamburgers, cheeseburgers, hot dogs, assorted sandwiches, chocolate cake, chocolate pie, and chocolate chip and chocolate ripple ice cream.

Eugene has the same in addition to complete dinners which sell daily for 75 cents.

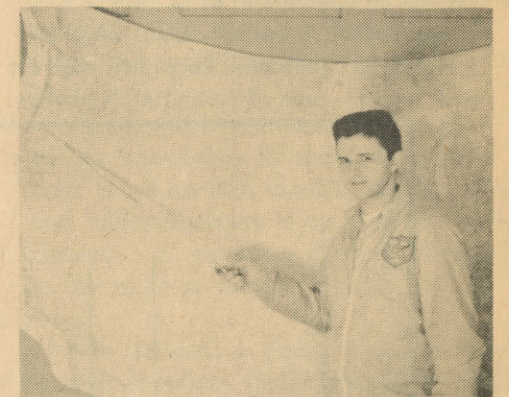
The Eugene shack is open from 10 a. m. to 2 p. m. Bethel is open from 10:30 a. m. to 1 p. m. --Jay Peterson

## Focus to plan meetings

A planning meeting is scheduled for tonight's Focus club and past programming will be studied.

Faculty advisor Gordon Wehner will lead the discussion and preside over the scheduling. Any students wishing to make suggestions for future activities of the club are invited. All suggestions must be of activities which do not violate the LCC constitution.

Interested persons are to meet at the Springfield faculty house at 7:15. Refreshments will be served. --Tom Black



## Teacher

Mike Peterson, president of the Flying Titans, teaches navigation in the club's ground school. Sessions are held Wednesday nights and are open to interested students.

## Penmanship practiced

William Mansell, clerk-controller, and

## Ask Archie...

ARCHIE DIDN'T PICKET

Because he knew with his school I.D. he got the lowest prices in town on gasoline (a major brand), oil, accessories, batteries, milk, eggs, oil filters and cigarettes.

# COPPING'S

6th and Blair

## DARI — DELITE

18th & Chambers  
A really delightful place  
To obtain the Finest  
in

FOODS and FOUNTAIN Treats  
Open 7 days a week 6 A.M. - 11 P.M.  
Midnight - Fri. and Sat.

## LCC STUDENTS!

Bowl with your  
Friends



# WANTED

## TALENT FOR

## LCC'S

### STUDENT & FACULTY

# VARIETY SHOW

**\*\*Singers\*\***

**\*\*Dancers\*\***

**\*\*Instrumentalists\*\***

**\*\*Combos\*\***

**\*\*Comedy\*\***

**\*\*Novelties\*\***

**\*\*Skits\*\***

Please fill out this form and place it in the box of Mrs. DeChaine-Springfield or Mr. Norman-Bethel.

NAME: \_\_\_\_\_  
ADDRESS: \_\_\_\_\_  
PHONE: \_\_\_\_\_  
AREA OF INTEREST: \_\_\_\_\_

Bowl with your  
Friends  
at  
**TIMBER BOWL**  
10th & Main St.  
Springfield  
Phone: 746-8221

...Meet the  
*Young Edwardian*  
by Arpeja....



IN THE  
LOFT  
AT

*The Broadway*

readers," co-editors Debbie Jo Briggs and Vicki Merrill said in a joint statement.

Full time and part-time students and staff members may place free classified ads up to a maximum of 25 words per week. The free ads will be run for one week, subject to space limitations, and must be received Monday noon for publication the following Thursday.

Ads should be delivered to The Torch office on the Bethel campus or sent through campus mail. "Telephone ads cannot be accepted because we don't have the staff to offer that service," Miss Briggs said.

Free ads will not include offers of commercial goods or services or real estate for sale or rent. These can be placed as business classifieds at 10¢ per line with a minimum of 50¢ per week.

### practiced

William Mansell, clerk-controller, and Lyle Swetland, chairman of the board of education, had to sign their names 1,200 times recently on behalf of the college. Both passed off the chore as simply part of their jobs.

They signed bonds, each worth \$5,000, which were sold to the United California Bank to raise \$6 million for campus construction.

Mansell said he used the same pen for signing all the bonds. "I started one day at 2:20 p. m. and finished by 5:10," he said. "Although signing took a lot of wrist action, I signed a larger number while finance director for Springfield."-- Terri Knutson

**FREE CLASSIFIED ADS:** Want ads, Rides, Miscellaneous for Sale, Baby Sitting, Book Swaps, etc., up to a MAXIMUM of 25 words per week, are free to full-time and part-time students and staff members. This does not include offers of commercial goods or services or real estate for sale or rent. Free ads are run for one week, subject to space limitations, and must be received by Monday noon for publication the following Thursday. Deliver to The Torch office on the Bethel campus (no phone ads accepted) or send through campus mail.

**BUSINESS CLASSIFIEDS** are available at 10¢ per line with a minimum charge of 50¢ per week.

USE FORM BELOW FOR YOUR AD

(25 word maximum for free ads, none accepted by phone)

--- SORRY---NO FREE REAL ESTATE FOR SALE or FOR RENT ADS! ---


FREE ADS RUN ONE WEEK ONLY.

**EUGENE  
BEAUTY  
COLLEGE**

A COMPLETE  
BEAUTY SERVICE

292 West 8th Ave.  
Phone: 343-3368

*Kirkland Flowerland*

FLOWERS  
FOR ALL OCCASIONS

Chalky White  
Lloyd Sharrard  
Owners

4340 Franklin Blvd.  
Eugene 726-7605

**ABE'S  
TAPROOM  
AT THE  
FORESTER  
RESTAURANT**

OPEN TILL 2:30 a.m.  
SUN 7:30-1:30

**ENTERTAINMENT**



# BETHEL CREAMS THURSTON

By GARY NAVE  
and LARRY PIQUET

Bethel used its superiority on the backboards and some hot shooting to annihilate Thurston 70-30. Don Richardson led the scoring attack with 18 points, after sitting out the entire first quarter.

It took little time for the much taller Bethel team to open up a large lead. At the end of the first quarter the score had already reached 21-6.

Thurston never was able to penetrate the tough zone defense thrown around its charges from the outset of the contest. Mike Fullerton, who had scored 18 points for them last week, drew man-to-man respect from Bethel while the other Bethel players were in a stingy two-two zone. Ron Marr was the man chosen to stick on Fullerton and he held him to four points.

Mike Wilkerson scored 16 points and again played a strong game on the boards, both offensively and defensively. Les Charles, with 14, and Marr, with 10, were the other Bethel players in double figures. Al Rackley led Thurston with 8.

SPRINGFIELD 61  
SOUTH EUGENE 47

Springfield used a balanced attack all the way through the game to up-end South Eugene by the score of 61 to 47.

Gary Garboden was the main stay for Springfield. He scored 25 points, high for both teams. Each of Springfield's players

entered the score book.

At halftime the score read 45 to 31. This was as close as South Eugene got the rest of the game. Roger Schuyler and Joe Robertson each turn in fine efforts for South, Schuyler scoring 18 and Robertson, 17. This makes the second win in two starts for Springfield.

SOUTH LANE 82  
WEST LANE 44

South Lane made it one win and one loss for the season by handing West Lane its first loss by an impressive score of 82 to 42.

At the end of the first quarter the score was all tied up 12-12. Then Bill Lane Duane Daggett started to pull away from West Lane in the second quarter. Lane scored 31 points while Daggett scored 21.

Each of West Lane's players scored, but this was not enough. South Lane used an effective fast break and controlled both the offensive and defensive boards throughout the game.

NORTH EUGENE 47  
SHELDON 39

North Eugene used a last quarter flurry to stun Sheldon Monday night by the score of 61-47. Employing only five men the whole game, they overcame a 33-27 third quarter deficit with sharp outside shooting.

A balanced scoring attack with two men in double figures was the success formula used by North. Leading the scoring parade was John Marshall with 14 and Dave Little with 12.

Don Shelley was high man for Sheldon with 12 counters. The rest of North's "Firehouse Five" was George Hunter, with nine points, Jeff Norman with eight, and Jim Hurst with four.

The victory evens North Eugene's record at one and one, while Sheldon drops into the cellar with two losses.

## BASKETBALL STANDINGS

TEAM	W-L	GB
Bethel	2-0	-
Springfield	2-0	-
South Lane	1-1	1
West Lane	1-1	1
Thurston	1-1	1
North Eugene	1-1	1
Sheldon	0-2	2
South Eugene	0-2	2

## TOURNEY SET END OF MONTH

Time is running short for those wishing to enter the LCC telegraphic bowling tournament. The tourney starts Jan. 30 and runs till March 4.

All one need do to get started is bowl five lines at the alley of your choice. These scores will be used to determine one's handicap. The handicap is found by averaging the five lines, subtracting the average from 190, and then dividing by 2/3.

Then the first week's three lines must be bowled and handed in by Jan. 30. These three lines must be bowled with another person entered in the tourney.

Handicaps will be changed from week to week according to the previous weeks results being averaged in against all others. The tourney will continue as such for six weeks with the winner being named at

## TOP TEN SCORERS

1. Bill Lane  
So. Lane 51--25. 5
2. Joe Robertson  
S. Eugene 49--24. 5
3. Gary Garboden  
Springfield 49--24. 5
4. Duane Daggett  
So. Lane 33--16. 5
5. Mike Burris  
So. Lane 32--16. 0
6. Les Charles  
Bethel 30--15. 0
7. Mike Wilkerson  
Bethel 28--14. 0
8. Terry Myers  
Springfield 25--12. 5
9. Don Richardson  
Bethel 24--12. 0
10. Mike Fullerton  
Thurston 22--11. 0



LCC's new Mark VI Universal Gym is demonstrated by Bill Gates (left) and Jim Wade. Gates is working on the leg press, while Wade is working on the shoulder press.

## MULTI WEIGHT MACHINE BUILDS STUDENT MUSCLES

By GARY NAVE

LCC's physical education program has received a shot in the arm with the purchase of a \$1,895 Mark VI Universal Gym.

The giant machine is used in bodybuilding classes taught by Tom Kienlen and Bill Dellinger at the Bethel campus. The Mark VI is supplemented by several barbells with various amounts of weight on them.

Advantages of the machine in lifting weights are numerous. It has four different stations, enabling several people to be working on it at the same time. There is a leg press, chest press, high and low pul-

each station may be converted into an isometric station by simply placing the weight selection pen at the bottom of the weights. Where it takes several minutes sometimes to unload and reload a barbell, a simple pulling out of the pen and reinsertion can change the weights from the lightest (20 pounds) to the heaviest the station will go (the leg press goes to 140 pounds).

A safety advantage is the absence of collars to secure the weights to a bar; thus there is no worry of the weight slipping off the end of a bar and hurting someone. Also, one needn't worry about getting more weight than he can handle. The weight can't fall on one, hence he is safe no mat-

Registration for LCC Bowling Tournament

(please print)

5 line handicap

Name

Address

Phone

DIRECTIONS:

Complete this registration form and submit to Miss Daggett by Monday, Jan. 30.

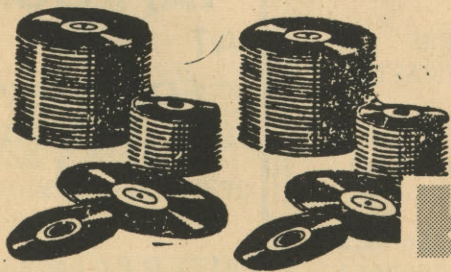
Securely attach your five line score sheet to this application.

Submit your first three line series by Jan. 30.



KPNW radio programming starts next week

TIME	MONDAY	TUESDAY	WEDNESDAY	THURSDAY	FRIDAY
8:30	News & Weather	News & Weather	News & Weather	News & Weather	News & Weather
8:45	Morning Matinee	Morning Matinee	Morning Matinee	Morning Matinee	Morning Matinee
9:00	" "	" "	" "	" "	" "
9:30	Music of the Masters	Music of the Masters	Music of the Masters	Music of the Masters	Music of the Masters
9:55	News/Headlines Weather	News/Headlines Weather	News/Headlines Weather	News/Headlines Weather	News/Headlines Weather
10:00	Music from Holland	Guest Star	Music from Canada	Spirit of the Vikings	Songs from France
10:15	Keyboard Favorites	Boston Pops Concert	Keyboard Favorites	Boston Pops Concert	The World's Music
10:30	Keyboard Favorites	Boston Pops Concert	Keyboard Favorites	Boston Pops Concert	The World's Music
10:45	Folk Music of America	Folk Music of America	Folk Music of America	Folk Music of America	Folk Music of America
11:00	News & Weather	News & Weather	News & Weather	News & Weather	News & Weather
11:15	Sports Roundup	Sports Roundup	Sports Roundup	Sports Roundup	Sports Roundup
11:20	Luncheon Concert	Luncheon Concert	Luncheon Concert	Luncheon Concert	Luncheon Concert
12:00	News from the Campus	News from the Campus	News from the Campus	News from the Campus	News from the Campus
12:05	Tunes for Teens	Tunes for Teens	Tunes for Teens	Tunes for Teens	Tunes for Teens
12:30	Luncheon Concert	Luncheon Concert	Luncheon Concert	Luncheon Concert	Luncheon Concert
12:45	Luncheon Concert	Luncheon Concert	Luncheon Concert	Luncheon Concert	Luncheon Concert
1:00	Dutch Light Music	Call from London	Jazz from Canada	This is Sweden	The Week in Sports
1:15	At the Console	Keyboard Favorites	At the Console	Keyboard Favorites	At the Console
1:30	Music from Broadway	Standard School Broadcast	Star Time in Paris	French Music & Musicians	Music from Broadway
1:45	Music from Broadway	Standard School Broadcast	Star Time in Paris	French Music & Musicians	Music from Broadway
2:00	News & Weather	News & Weather	News & Weather	News & Weather	News & Weather
2:15	World of Science	Campus Comment	World of Science	Campus Comment	World of Science
2:30	Concert Hall	Concert Hall	Concert Hall	Concert Hall	Concert Hall
3:00	Concert Hall	Concert Hall	Concert Hall	Concert Hall	Concert Hall
3:15	SIGN OFF	SIGN OFF	SIGN OFF	SIGN OFF	SIGN OFF



need to make a fast buck? make it on the bon's  
save-a-dollar records ....

2.79 & 3.79  
mono stereo

put 1.00 back in your pocket with every album from the bon's terrific  
selection! every artist! every label! list prices 3.79 & 4.79.no tricks!  
no coupons! just every-day savings!

bon marche russells

sults being averaged in against all others.  
The tourney will continue as such for six  
weeks, with the winner being named at  
the end of the six weeks. --Gary Nave

10. Mike Fullerton  
Thurston 22-11. 0

stations, enabling several people to be  
working on it at the same time. There is  
a leg press, chest press, high and low pul-  
ley, and a shoulder press. In addition,

Also, one doesn't worry about getting more  
weight than he can handle. The weight  
can't fall on one, hence he is safe no mat-  
ter what the weight.

NEXT WEEK'S SCHEDULE

Monday	Jan. 30	Court A	7:00 p. m.	South Eugene vs. Bethel
		Court B	7:00 p. m.	South Lane vs. North Eugene
		Court A	8:15 p. m.	Springfield vs. West Lane
		Court B	8:15 p. m.	Thurston vs. Sheldon

BOX SCORES

Sheldon	39	North Eugene	47
Wade	5	Hurst	4
Myrick	6	Little	12
Mertz	8	Hunter	9
Shelley	12	Marshall	14
Haxby	4	Norman	8
O'Neil	2	TOTAL	47
Beebe	0		
Morrissey	0		
Smith	2		
TOTAL	39		

Springfield	61	South Eugene	47
Anderson	8	Thomas	10
Buchanan	6	Schuyler	18
Standley	6	Metz	0
Myers	4	Withrow	0
Garboden	25	Robertson	17
Coggins	6	Snicale	2
Brown	4	Sturdevant	0
Coddington	2	Skeen	0
TOTAL	61	Dawson	0
		TOTAL	47

Thurston	30	Bethel	70
Herrick	6	Charles	14
Hartman	6	Rossow	8
Brecht	0	Wilkerson	16
Fullerton	4	Nave	2
Rackley	8	Marr	10
Rosin	0	Richardson	18
Kintzley	0	McKevitt	2
Cornell	4	Riecke	0
Wright	0	TOTAL	70
Kinman	2		
TOTAL	30		

South Lane	82	West Lane	44
Morrow	8	Kickner	8
Land	31	Ron Larson	8
Burris	16	Mullen	6
Daggett	21	Roger Larson	4
Kildal	5	Grant	10
Simdars	1	Schaffer	6
TOTAL	82	Preston	1
		Sanders	1
		TOTAL	44