

THE TORCH

3rd Year, No. 12

200 North Monroe Eugene, Oregon 97402

January 25, 1968

Stereocasting by Feb. 10

Stereo lovers will have to wait just a little longer for stereo on KLCC.

Last week, KLCC radio news reported that stereo broadcasting was a certainty in the near future. The newscasts also stated that equipment necessary for stereo operation had arrived and was being installed.

On Saturday, Jan. 20, James Brock, assistant professor of electronics, and advanced students in Radio Broadcasting and Television, completed installation and testing of the new equipment.

LCC applied to the Federal Communications Commission for a building permit last December.

"The next step," said Roger Houghlum, electronics division head, "is to make application to the FCC for modification of KLCC's station license to reflect the equipment changes that have taken place."

Action on the application will require several weeks, making the earliest possible date for stereo programming no sooner than Feb. 10.

The Federal Communications Commission requires a station to modify its license prior to the start of stereo broadcasting on a regular schedule.--Jerry Foster

Focus plans constitution revision

Focus Club will meet at 7:15 p.m., Tuesday, Jan. 30 at the Faculty House on the Springfield Campus.

The Bible discussion will be led by Dan Eyk and is based on Romans, Chapter 13.

Bob Bailey was appointed chairman of a committee to revise the club constitution. Other committee members are: Bill Jordan, Bonnie Black, Peggy Patton, Linda Young, Lucinda Young, and Gordon Wehner, advisor. The committee will meet at the Faculty House at 6 p.m. on Tuesday, Jan. 30.--Alameda Randall

See president Monday, 3-5

Dr. Dale Parnell, president, reminds students that he has open office hours on Monday afternoon from 3 p.m. to 5 p.m. Anyone who wishes to see him may do so at this time without an appointment.



"WOULD YOU MIND REPEATING THE LAST TWO OR THREE SENTENCES? THEY DIDN'T SEEM TO MAKE MUCH SENSE."

PAT JACOBS



DOUG BENNETT

Titan staff taking pics

Don't be surprised if sometime in the next few weeks a flashbulb explodes in your face. It's only a friendly Titan photographer collecting more shots for The Titan.

Work is progressing rapidly as The Titan staff tries to meet their Feb. 1 deadline; 10 pages have been completed and 25 more, some of them division layouts, must be finished in the next week.

So far 50 annuals have been sold in advance sales. An anticipated 400 copies will be printed.--Mike Graf

Choir cancels Florence trip

"If you've got the money, we've got the time," was LCC's answer to Siuslaw High School.

After accepting an invitation to appear at Siuslaw High School on Jan. 24, the LCC choir and band had to cancel.

Robert Norman, LCC choir and band director, stated that "our bus is not big enough to transport both groups." A request for funds to rent another bus was denied by the administration and student senate.

Siuslaw High School also declined to finance the trip; reason: lack of funds.--Andy Gianopoulos

LITTLE MAN ON CAMPUS

Senators named to fill vacancies

Thursday the Student Senate appointed four new members to fill vacant seats.

Two of these were sophomore representatives; Pat Jacobs from the Home Economics Division and Terry Nousen from the Electronics Division.

The others were Doug Bennett, Electronics, and Bill Denniston, from Language Arts.

Doug Bennett was also appointed Publicity Manager for Student Activities. Bob Bailey was appointed by Focus to represent that club in the senate.

Student dies in bathtub

A 21-year-old LCC student apparently drowned Thursday night. The body of Robert Gene Beck was found early Friday in the bathtub of his apartment at 1275 Patterson St., Eugene. Medical examiners said that

ROBERT BECK



Beck was an epileptic and that this may have been a contributing factor in his death.

Beck was a third year auto mechanics student at LCC. Funeral arrangements will be announced by Poole-Larsen Funeral Home.--Mike Graf

Snack Shack shutting down

The snack shack on the Eugene campus will be closed for two weeks starting next Monday, Jan. 29.

Monday, Feb. 12, the cafeteria will reopen, utilizing MDTA fry cook trainees. The reason the food services building will be closed is due to training inexperienced students.

"Additional items will be added to the menu when we reopen Feb. 12," said Merlin Ames, LCC's food services director. Among these new items are: soup, beef stroganoff and lobster thermador.--Jerry Foster

Exhibit moving to Springfield

There's something for everyone at the Paperback Exhibit! This exhibit will be at the Eugene campus until tomorrow, Jan. 26. Starting Monday, Jan. 29, the exhibit will move to the Springfield campus. Hours will be daily from 8 a.m. to noon and 1 p.m. to 5 p.m. and 6:30 p.m. to 8:30 p.m. Monday through Thursday.--Barbara Thompson

Focus to sponsor garage sale

A garage sale sponsored by the Focus Club will be held on Saturday, Feb. 10. The place will be announced later.

Bob Bailey led members in a discussion on the question, "Do you dishonor God?" when they met Tuesday, Jan. 23, at the home of Linda and Lucinda Young.

Refreshments were served.--Alameda Randall

Gary McNabb, sophomore senator from Business Education, announced that unless more senators show up, business cannot be conducted.

This statement was made due to the fact that the Senate meeting was held up for 40 minutes while waiting for a quorum.

McNabb protested the appointment of Ric Little to the Student Senate to represent the Business Education department. The reason for the protest was that McNabb was the elected representative for that department, but was absent at the last meeting due to a flat tire.

He pointed out several constitutional discrepancies in the appointment, and Little was then unseated with apologies to him and to McNabb.

The Student Senate also gave tentative approval of a Charter for the Christian Science Organization, a club for students of that faith.

The approval was granted dependent upon a few minor changes in the group's constitution.

Other business conducted at that meeting was the decision to postpone the selection of members to the Phi Theta Kappa because the grades had not all been recorded.

Just before the meeting adjourned, a constitution was submitted for a Ba'hai Fellowship to be formed on campus. After studying this document, the senators will act on it at the next senate meeting.--Bill Denniston

ASB positions up for grabs

Do you want to run for a student body office at Lane Community College? Now is the time to pick up your petition. Where? Just ask any counselor.

Your qualifications must be: (1) that you're a full-time student at LCC (nine hours); (2) you have an accumulative GPA of 2.00 before and during your stay in office.

As someone said a few years ago, "It's not what your college does for you, but what you do for your college." If you don't run for office, who will?

Nurses plan rummage sale

The Practical Nursing Class will hold a rummage sale on Saturday, Jan. 27 from 7 a.m. to 5 p.m. in a store at 7th and Wilamette St., Eugene (near the Heilig theatre).

Funds raised from the sale will be used toward the purchase of class pins.--Alameda Randall

LOOK What's Cookin'



THURSDAY, Jan. 25--Torch staff, 3 p.m., Torch office.
MONDAY, Jan. 29--KLCC broadcasting, 7:30 a.m. to 9:30 p.m., Monday through Friday
TUESDAY, Jan. 30--President's Cabinet, 9 a.m., KLCC studio, Focus Club, 7:15 p.m., Springfield Faculty House
WEDNESDAY, Jan. 31--Staff Association meeting; Division meetings; Flying Titans, 7 p.m., Room 19, Eugene campus.--Demetria Juarez

Campaigning starts Feb. 1

It's that time of year again, when the whispers of "Who do you think will run for President," and "Who do you think will win the election," can be heard echoing through the halls of LCC. It won't be long until the elections for student body officers for the 1968-69 school year will be held. If you have an interest in your school and would like to participate in your student government next year, just follow the simple outline below.

1. A candidate for office must be a full-time student and have an accumulated minimum grade point average of 2.00. He shall maintain this grade point average throughout his tenure in

office. A full-time student is defined as one who is registered for nine (9) or more credit hours.

2. A candidate shall have completed two academic terms prior to his proposed tenure in office and shall have been in attendance not less than one academic term prior to his nomination. To achieve sophomore standing, he must have 36 hours.

- I. File a petition.
 - A. Petitions are available at either of the counseling centers on the Eugene campus.
 - B. Petitions must be signed by fifty

- (50) full-time students.
 - C. Petitions must be returned to either counseling center (Eugene campus) by Wednesday, Feb. 28, at noon.
- II. Complete a candidate questionnaire.
 - A. Attached to each petition is a candidate questionnaire which will be used for a Torch news story, if it is returned by Feb. 19 to The Torch office on the Bethel campus.
- III. Campaign at your discretion.
 - A. Campaigning may begin after Feb. 1.
- IV. Voting
 - A. All members are eligible to vote.
 - B. All elections shall be by secret ballot.
 - C. All voting shall be done at polling places presided over by members of the student senate.

Positions open will be president, first vice-president, second vice-president, recording secretary, corresponding secretary and treasurer. Senators from each curricular division will also be elected.

The elections will be held on March 1. So, if you have the interest and desire to be a leader in your student government during our first year on the new campus, then I urge you to petition for an office, campaign for that office, and if elected, to serve in that office to the best of your ability. Most important though, I urge each of you to vote for the candidate of your choice on March 1. Good luck, and may the best man or lady win.

Larry Barker
ASB 1st Vice-President

Keepsake



\$150
up to
2 YEARS
TO PAY

HARRY RITCHIE
Jewelers
856 Willamette

LCC STUDENTS!

Bowl with your Friends



at

TIMBER BOWL

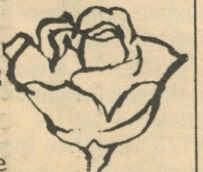
10th & Main St.

Springfield

Phone: 746-8221

Kirkland Flowerland

FLOWERS
FOR ALL OCCASIONS



Chalky White
Lloyd Sharrard
Owners

4340 Franklin Blvd.
Eugene 726-7605

**THE
TORCH**



Published Thursdays during the school year, except during vacation periods and exam weeks, by students at Lane Community College, 200 N. Monroe St., Eugene, Oregon, 97402. Opinions are those of the writers and not necessarily those of the Board of Education or staff.

Publisher.....Media Board
Editor.....Charlotte Reece
Advertising Manager.....Joann Gibbs
Sports Editor.....John Moore
Sports Assistant.....Gene Cogburn
Production.....Susan Howard
Kathy Pipkins
Darkroom Technician.....Greg Morse
Circulation Manager.....Steve Busby
Press Run by.....Springfield News

*Test your
diamond
I.Q.*

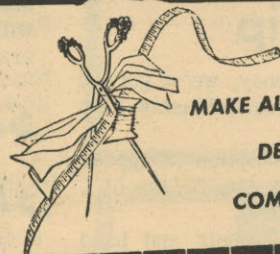
**Q. DO MINUTE FLAWS
ALWAYS AFFECT
A DIAMOND'S
BEAUTY?**

A. If there are obvious flaws, both beauty and value are affected. However, if there are only a few tiny flaws, and it takes 10-power magnification to see them, it lowers the price—but it does not affect the beauty or durability of the diamond. Obviously, with such delicate factors of judgement, you need the knowledgeable and conscientious help of a fine jeweler. As members of the American Gem Society, we are able to offer this training and assurance to you. Stop in soon to see our fine diamond collection and learn more about the proper grading of gems.

MEMBER AMERICAN GEM SOCIETY

Skere's
JEWELRY

1027 WILLAMETTE



MAKE ALL YOUR
DESIGNING WISHES
COME TRUE...

Carletex
FASHION FABRICS

OUR MOST INSPIRING NEW COLLECTION features the newest woolens and synthetic weaves, textures, patterns and colors. Choose from the COIN designer group...each bonded to its own luxurious lining to simplify your cutting, sewing, fitting. All 54/56 inches wide.

"FANDANGO" check and plain coordinates. Worsted wool/nylon/acrylic/cotton 100% acetate lining.

\$5.98 a yard

"CANDY" stripes and checks 100% acrylic with 100% acetate lining.

\$3.98 a yard

"CAROUSEL" coordinated plaids and solid colors. 88% texturized acetate 12% nylon. 100% acetate lining.

\$3.98 a yard

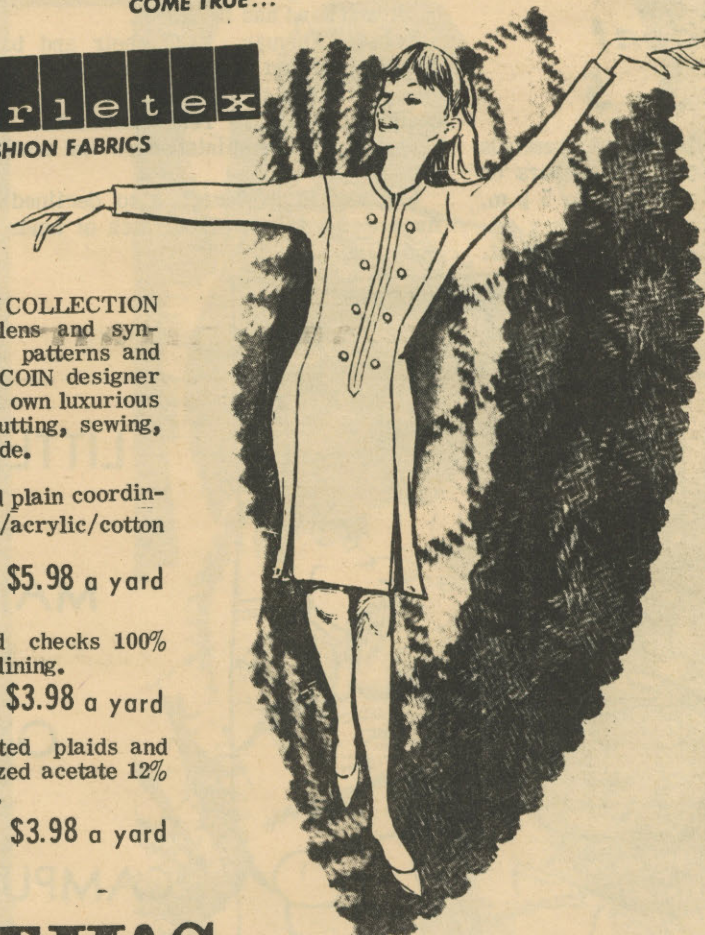
OSCAR STRAUSS

HEATH'S

wonder fabrics

Open Mondays and Fridays Until 9:00

878 Willamette ... just 30 steps North of Broadway



L.C.C. PRESENTS

THE
RISING
MOON!

FEATURING

THE **STARLIGHTERS**

• A SEMI-FORMAL FUNCTION
AMOUNTING TO \$4⁰⁰ COUPLE
ON THE TENTH OF FEBRUARY
FROM NINE TO TWELVE P.M.

• AT THE COUNTY FAIRGROUNDS

Thurston, Beavers win opening round games

By GENE COGBURN

Lane Community College's intramural basketball season got off to a somewhat lopsided start Monday night as the offensive outputs of three competing teams could barely equal the output of the fourth, as Thurston hit for 88 points in a 61 point victory over South Lane, 88-27.

In the opening game's action the Springfield Beavers out-bungled Bethel for a 36-27 victory.

In Wednesday night's action, North Eugene met Sheldon, and the Freshly Brewed Coffee of Springfield met South Eugene. Due to the deadline policy of this paper, scores and accounts of these games will not be printed until next week.

Thurston 88 South Lane 27

Thurston's intramural basketball team ripped off 18 straight points at the game's beginning and then went on to rip South Lane, 88-27, in the second game of the opening night's action in the intramural basketball schedule Monday night at Springfield High. Led by center Roger Poe's 33 points, all of Thurston's five starters hit in double figures as Thurston's offense was much too much for South Lane.

After gaining the 18-0 lead in the first five minutes of the game, Thurston went on to lead 29-5 at the quarter break. After Terry Patterson gave South Lane its first points at 18-2. Thurston scored nine more straight points, before South Lane could hit again. Thurston sported a balanced scoring attack in that first quarter, as Poe hit for 10 points, while Mike Fullerton was getting

seven, and Jim Purscelley and Don Miles were getting six apiece.

Anything after the opening quarter's 29 point output would have been more or less icing on the cake, but Thurston about matched it again, as they moved to a 50-13 halftime lead. Poe and Purscelley led the second quarter scorers.

The second half found the Colts striving for the 100 point mark but falling short. A 16-point third quarter gave Thurston 66 points with eight minutes left, but they could not increase their pace and finished with the 88 point total.

Besides Poe's 33 total points, the other Colts who gained the scoring column were Fullerton with 18 points, Miles with 14, Purscelley with 11, captain Rich Schmunk with 10 and Jim Grant with 2.

South Lane, plagued with ball handling problems, was paced in their scoring by their center Ron Larson with six points and Laird Sanders and Nick Vanderfoot with five apiece.

Thurston will go against the undefeated Springfield Beavers in their next outing next Monday at 7:15.

Beavers 36 Bethel 27

You figure that if your team can make only one of its first 20 shots that you might as well go to the showers. Well, that's what the Springfield Beavers did in the opening game of the intramural season but they didn't go to the showers, they won, as Bethel had an equally poor night, and went down in defeat to the Beavers 36-27.

The Beavers somehow survived a first half that saw them make only five of 37 shots, but be behind by three at 13-10. What the Beavers lacked in shooting ability, they made up for in scrappiness and hustle, as they allowed Bethel 15 fewer shots than themselves.

Hugh Davis, pint-sized Beaver guard, came off the bench to start the second half and promptly scored four straight points to give Springfield a lead they never gave up at 14-13. Bill Stevens and Mike Curry had each added buckets to the Beaver total before John Barge could hit a counter for Bethel. Davis followed with another two pointer to give Springfield its 20-15 lead at the end of the third quarter.

In the fourth quarter both teams opened up their scoring attack as Springfield hit for 16 points and Bethel hit for 12, for the final count at 36-27.

Rick Taylor, who had six of Springfield's 10 first half points ended up as the game's leading point-getter with a total of 10 on five field goals. The only other player close to double figures was Barge who led the Bethel attack with nine. Davis's six third quarter points were enough to give him runner-up honors in the Beaver's scoring column.

Larry Fullerton and Don Gross, who led the fourth quarter Beaver spurt, each ended up with four points apiece. Ron Winger was the number two man in the Bethel scoring attack as he hit for eight points off of four driving layups.

Basketball games next week

Monday, Jan. 29:

Court 1

7:15 p.m. Thurston vs. Springfield Beavers
8:30 p.m. Bethel vs. North Eugene

Court 2

7:15 p.m. South Lane vs. South Eugene
8:30 p.m. Sheldon vs. Springfield FBC's

Wednesday, Jan. 31:

Court 1

7:15 p.m. Springfield FBC's vs. Bethel
8:30 p.m. North Eugene vs. Thurston

Court 2

7:15 p.m. South Lane vs. Springfield Beavers
8:30 p.m. South Eugene vs. Sheldon

ODD MART

A quiet, female roommate is needed to share an apartment near the Eugene Campus. Call 343-6325 and ask for Janet.

Need an apartment or a roommate before Feb. 1? For \$65 per month you can share a two-bedroom apartment two blocks from the Springfield campus at 229 S. 2nd. It's very spacious and has wall to wall carpeting. Call 746-1165 after 5 p.m. and ask for Pam.

ALWAYS WELCOME

A & W

DRIVE-IN
&
COFFEE SHOP

4040 McKenzie Hy.
746-4145



THIS YEAR ...

Why don't you
solo too?





Special

\$5 INTRODUCTORY
FLIGHT
LESSON

688-9291

EUGENE
AVIATION
INC

USED V-W's

We have the largest stock of used V-W's in the Northwest. Many of these are local one owner cars and most of them carry a 100% warranty.

PAPE-CROSS VOLKSWAGEN, INC.

Sales and service for Lane County

20 COBURG ROAD. OPEN 7 DAYS A WEEK PHONE 343-3307



- * Drafting & Engineering Supplies
- * Student Desks & Chairs New & Used
- * Art Supplies

Visit Our New

GIFT & GALLERY SHOP

1173 Pearl St. Plenty of Free Parking



- CHICKEN & STEAK DINNERS
- DELITEFUL BURGERS
- GRILLED HAM SANDWICHES
- BACON BURGERS
- CUBE STEAK
- BAR-B-QUEUED DOGS
- DIP CONES
- 33 VARIETIES OF SUNDAE TOPPINGS
- BREAKFAST SERVED EVERY MORNING

HOME MADE PIES

6 a.m. to 11 p.m. weekdays Phone orders accepted
6 a.m. to midnight weekends Orders to go


DARI — DELITE

18th & Chambers 343-2112




AUTO INSURANCE PROBLEMS??

SEE US



BARTHELEMY INSURANCE AGENCY

1135 Willamette St., Eugene Ph. 345-8524



255.00

Platitudinous, perhaps, but worthwhile things do take time. Also timing. So, we have credit plans for students of promise.

weisfield's

JEWELERS

881 Willamette
Eugene, Oregon
342-1741