

## Their Cup Runneth Over

# Titans Wade Through Lakers; Umpqua Next

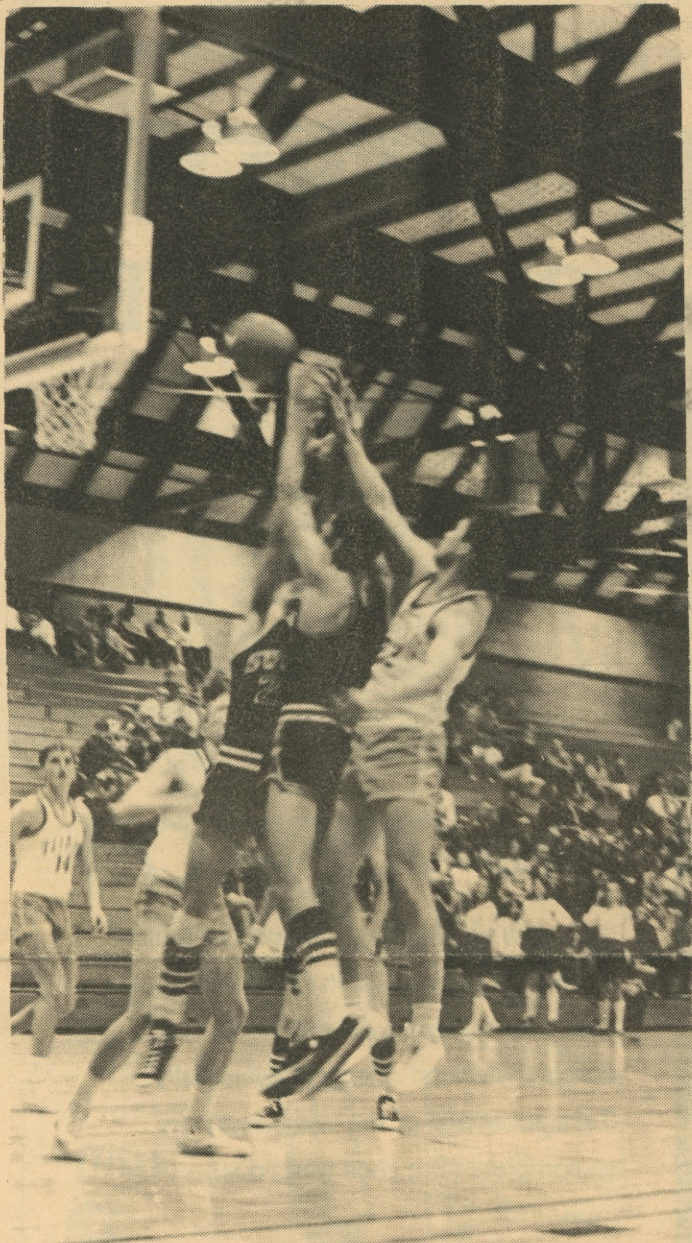
by RALPH KRUMDIECK

A trio of LCC Titans scored in double figures to crush previously unbeaten Southwestern Oregon Community College Lakers 67-60 on Saturday, Jan. 11.

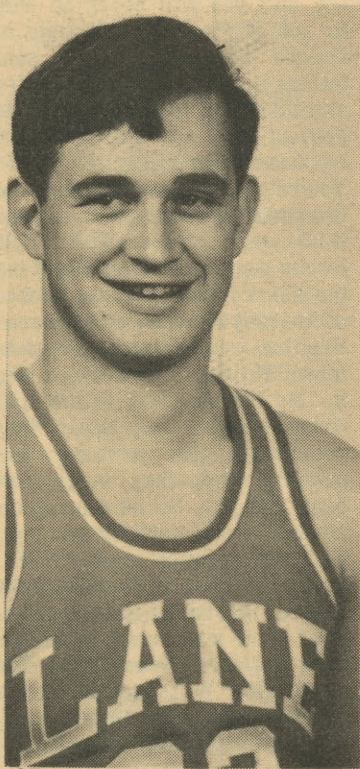
Forward Ken Tannler led the Titans with 14 points while Dave Naessens collected 12 and Rob Barnes 11. Frank VanLoe of the Lakers led all scorers with 19 points.

JERRY FOSTER photo

Titan Coach Mel Krause was obviously pleased with his team's performance. "This win proves that we will be competitive with the other teams in our league." It was the second straight league victory for the Titans, who are now 4-1 overall, and the first loss in three starts for the SWOCC Lakers.

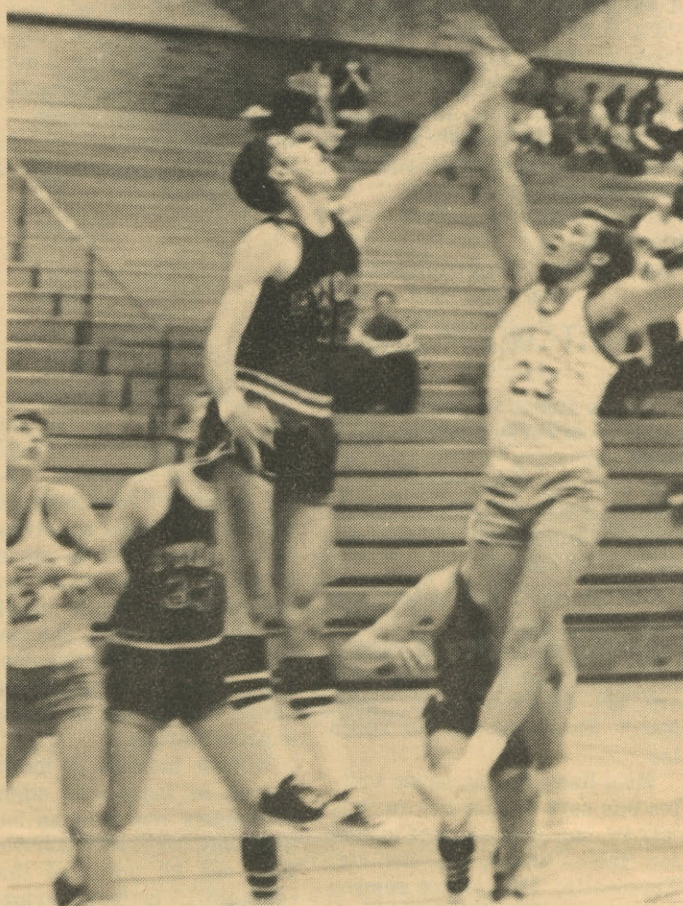
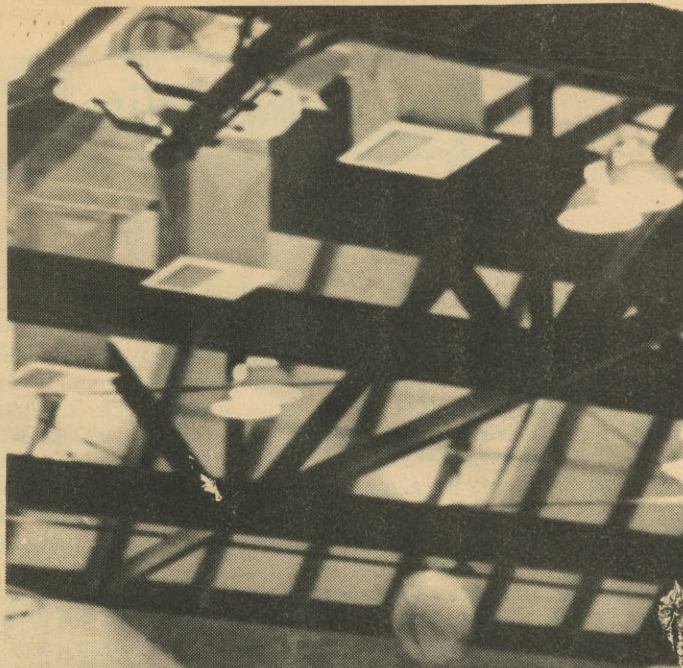


Approximately 500 people turned out to see Lane's fourth victory in five starts. All LCC home events are free of charge.



Ken Tannler, Lane's top scorer with 14

The Titans throttled the Lakers with a potent zone defense the entire game while they collected on 41 per cent of their field goals. The scrappy Lakers fought back continually, however, and enjoyed a 29-26 halftime advantage.



JERRY FOSTER photo

That's the way it went all night. Both teams were penalized heavily.

### CAMPUS RADIO TO COVER GAME

KLCC-FM will broadcast tonight's basketball game with Umpqua Community College, Roseburg, according to Roger Houghlum, station manager. He did not know who would announce the play-by-play action.

Game time is 7:30 p.m.; KLCC is located at 90.3 Mc.

## UFO Expert To Lecture On Monday

James Moseley, America's foremost expert on flying saucers and other unidentified flying objects, will be a guest lecturer at Lane Community College Jan. 20, at 8 p.m.

Moseley will speak in the large lecture hall in the forum Building on the new campus.

Considered the most knowledgeable and articulate authority on UFO's, he has completed extensive research and evaluated all possible evidence to determine the reality of the Saucer Mystique.

Founder of SAUCERS (the Saucer and Unexplained Celestial Events Research Society), Moseley is also editor of Saucer News, which is credited with being the most authoritative source of information on the subject.

Throughout the history of the world, thousands of mysterious "flying" objects have been seen in the sky and reported. However, public knowledge of this subject is somewhat limited.

He is a graduate of Princeton and is the author of several articles for popular magazines.

### TWO EXTRA WEEKS GIVEN TO DROP

Students at Lane Community College will be given an extra two weeks in which to make up their minds about withdrawing from winter term classes.

The last day for full tuition refunds for winter term has been changed from Jan. 24 to Feb. 7. Students who withdraw before the seventh are eligible for full refunds on tuition. The reason for the change is to give students more time to "sample" classes before deciding to drop a class or stay in.

Dean of Students I.S. Hakanson explained, "We want the students to have ample time to see what the course has to offer them before they are forced to decide whether or not to withdraw. Changing the refund day for tuition makes it possible for students to get some of their money back if they do decide to drop a course."

Students are actually given seven weeks to voluntarily withdraw from class, but unless they drop before Feb. 7 they will not be eligible for a tuition refund.

## THE TORCH

No. 11

Lane Community College, Eugene, Oregon Jan. 14, 1959

### DENTAL HIGIENE STUDENTS NEED TEETH TO CLEAN

The Paradental Department will begin taking patients for the dental hygiene students to do an oral prophylaxis (cleaning and scaling of teeth) during, approximately, the week of January 13, according to Dr. John Dickinson, department head.

Prior to that time it will be necessary to screen patients. This will be done Thursday mornings between now and that time.

Those wishing to take advantage of the above mentioned service please call the department secretary, Mrs. Hoffman, at ext. 266 and she will arrange a time on a Thursday morning for you to be screened.

### Season Started With PCC Loss, Lane Now 4-1

Our Titans started the season dimly with a loss to Portland Community College 35-76 on December 20.

It was the Titan's only loss to date as they went on to smash Salem Technical Community College 98-49 on December 30.

The first new game of the new year brought a special sweetness to the Titans as they avenged their earlier loss to Portland Community College with a 75-67 win.

On January 7 the Titans rolled over Concordia 93-73 and their latest game was an impressive 67-60 victory over previously unbeaten Southwestern Oregon Community College last Saturday.

RALPH KRUMDIECK



Coach Mel Krause

But in the second half the Titans broke the game open using a fast break and went ahead by 10 points midway in the second half. "We ran a lot better in the second half," said Krause. "The first half was lackluster because of all the turnovers, because of all the turnovers, but we played real good in the second half." John Barge and Rob Barnes provided rebounding strength while the Titans used ball control for the last two minutes of the game to protect their lead.

Tonight at 7:30 p.m. the Titans will face a top team in the Oregon Community College Athletic Association when they play host to Umpqua Community College at the LCC gym.



## Letters to the Editor

### Student Vomits

in reading the college newspaper, "THE TORCH", of the latest issue, I have had a compulsion to go stand in a corner and vomit.

The issue prior to December 16, 1968, were billed with assorted bits of garbage, but I would like to call your attention to an article that appeared in the Dec. 16th, issue of the Torch. It seems that Cathy Hass, in writing her brilliant review of "STOP THE WORLD I WANT TO GET OFF," LCC's first musical, has missed the whole point of the show. It seems a shame that she had to pay money to go and watch Nicola Crafts blow a line, or lament about the circumstances in which it was performed. Cathy love, that isn't the point!

The story is told both through action and dialogue, and it takes a person who has a little imagination to enjoy it. Do you have any?

It seems very evident that as a theatre critic you have very little knowledge. I personally am very thankful that LCC had firstly, a person like Edward Ragozzino, who fought all the way and made "STOP THE WORLD" a possibility, and secondly, the cast - who through their hard work and talent, made the show a success.

I feel sorry for people like you Cathy Hass, who, through their own ignorance miss-inform many people.

I would think that a college newspaper would have a higher quality of people than you have. Good luck in the future, you are going to need it.

Sincerely,  
Ken Hamilton, Performing Arts

#### EDITOR'S NOTE:

Lane's student-operated Torch is far from perfect, and we don't mind admitting it because we are learning. Cathy Hass, innocently showed the much-heralded Stop the World performance was not perfect either.

But so what. Few people are concerned with your dramatic perfection because most realize you are learning too. Amateurs are not expected to be "perfect." That goes for the Torch too.

Miss Hass, having never written this sort of thing before, was told by her English prof to look for these things, so she did. Personally, Miss Hass enjoyed the play very much.

As for our college newspaper having higher quality of people, baby, our people are students not professionals.

As for our college newspaper having higher quality of people, baby, our people are students not professionals.

#### REGISTRATION

#### ANTIQUATED

Dear Sir:

With all the fine attributes and innovative ideas enacted at Lane Community College, I fail to understand why the school insists on following such an inefficient, antiquated system of registration. In handling some 4000 plus students one would think some better means could be found

to register them all without having each one wait in line for an unscheduled, hit or miss chance at a counselor, who, on the basis of a two-second introduction presumes to advise and assign the would be student to a list of classes which may be the foundation of his scholastic or economic future. The idea that this kind of counseling can possibly be of real assistance to either the student or the school is preposterous.

Without mention of the frayed nerves of those with other appointments who wait an hour in line only to finally arrive at a desk and be informed that the counselor is just leaving for lunch, the student certainly is not getting the proper counseling so important to him at this stage by such an impersonal, mechanical method.

As the student is to meet with a faculty member before completing his registration anyway, why not set up a schedule of appointments ahead of registration with someone in his own major area who will get to know the student and his needs and who is also aware of the academic requirements in that area. Surely, if this is not the best method it would at least be an improvement which would make better use of time for both student and counselor and assure the student of greater satisfaction with his course work.

JEAN EDWARDS

### RING STOLEN

Letter to a thief:

How can anyone be so cruel. Not only do you break into P.E. lockers, but you steal the one and only possession which has any meaning to my husband besides me. You stole the ring I gave to him for a wedding present four months ago. The ring will never fit you. It's a size 12-1/2 and you will never be able to get it fixed in the State of Oregon because I have sent letters to the thousands of jewelry stores in this state in order to prevent it. I have also contacted the Lane County Sheriff's office. You're right in your thinking that it's probably worth some money. It is worth at least \$300. \$300 can be replaced Mister Thief but the heart break you have caused us is irreparable. Don't you realize that a ring like that is custom made. No one else has one like it. My husband was in the U.S. Army Airborne and, buddy, they get some good training especially when they weigh well over 200 lbs. So let your imagination go to work for you now. Can you imagine what he will do to you when he sees someone wearing a ring of this description? And what else could you have possibly stolen it for? You can't give a 1/4 carat man's diamond ring size 12-1/2 away. Who could possibly wear it. Except my husband.

Can't you find a little good in your heart and return the ring to us. All you have to do is stick it in a little box and address it. You don't even have to put postage on it. Send it C.O.D. if you want. But please, please, please sent it back to us. We will probably never know who you are and unless you return the ring to us we will probably never see it again. Put yourself in our place. Surely you have some possession (not stolen) that means very, very much to you. If you have any decency at all please send the ring back. NO QUESTIONS ASKED!

Sincerely,  
MRS. GLEN CAIN, 299 Blazer Avenue, Eugene, Oregon, 97402, 688-0917 eves. 342-5116 days.

#### PROFESSIONAL GUITAR INSTRUCTION

Classical, Blues, Rock, Jazz, etc.

344-0078

Leave name & address



**FOX HOLLOW CHALET**

1 and 2 bedroom apartments

Close to LCC

TV cable & all appliances

Completely carpeted

5477 Donald St.  
Phone 343-3820

Pool & Rec. Room

AVAILABLE IMMEDIATELY

RENTAL

2½ Bedroom house

Carpeted, Unfurnished

Springfield 154 North 37th

BEER FOUNTAIN REALTY

342-3363 mornings

345-7914 anytime

## YEAR END SHOE CLEARANCE

# 1/2 PRICE

## to 75% Off

Save now on this season's smartest styles!

All the looks you like in round and square toes, chunky or new higher heels, and colors that blend or accent beautifully.

Take advantage of the low prices now to complete your shoe wardrobe!

**FLATS:** were 8.00-17.00

**NOW 4.90**

**LOAFERS:** were 10.00-14.00

**NOW 5.00-7.00**

**LITTLE HEELS,**

dress and sport shoes: were 10.00-28.00

**NOW 5.00-13.50**

All Remaining **BOOTS**

**25% OFF**

All of our Famous Names Included! Villager, La Piuma, Jacqueline, Connie, Fredelle, Golo, Customcraft.

*Kaufman Bros.*

ON CAMPUS



GERMAN LUNCH  
HOUR ATTENDANCE  
URGED BY RESHKE

A German Language Hour is held daily from 11:30-12:30 p.m. in the Health Building, rm. 116. It is open to any student or staff member who has a knowledge of German. Native German students or staff are encouraged to drop in and enjoy conversation with other persons who speak and are interested in German. Students in the German classes are also encouraged to come and share in a conversation hour which will be an informal time to speak and learn about German. Herr Reshke, German language instructor, urges those attending to bring their lunch.

**ALLEN**  
Office Equipment

SALES—RENTALS  
SERVICE  
Rentals to Apply  
to Purchase  
ALL TYPES OFFICE  
MACHINES AND  
FURNITURE

Authorized Hermes Dealer  
**343-9112**  
1194 WILLAMETTE

# Classified

**REWARD OFFERED** Please return the Marine Corps DI helmet that was taken January 8 out of the '55 Chev. Bring it to the Adult Education Office in the Administration Building at any time. Thank you.

LCC student needs ride at 3 a.m. or 8:15 a.m. on Tuesdays and Thursdays. Student lives at West 18th and CityView Sts. Please call 344-6879.

Stay Warm & Dry This Term. 1955 Buick Century. Radio, heater, Power Steering & Brakes. Wide oval whitewalls, cleanbody. \$175 (part cash) Jim, 344-3243

Need a Ride to LCC at 8:30 and from at 3:00. Will share cost. David McDonald, 345-4608

Patricia Park, 2091 McMillan (near South Willamette). Tues. and Thurs. afternoon classes from 1 p.m. to 5:30 p.m.

## GYMNASTS OPEN TODAY WITH CGHS

The Titan gymnastic team will host Cottage Grove High School today at 4 p.m. in the Auxiliary Gym. Coach George Gyorgyfalvy's squad will be competing in its first home appearance of seven scheduled contests this year. Leading performers to date have been John Laptad, Harold Summers and Steve Blair.

Mr. Gyorgyfalvy has also been working with the following men in preparation for the opening competition today:

Michael Bush  
Galen Lee  
Roger Piper  
John Spiering  
Mike Lyons  
Duane Patterson  
Billy Jordan  
Jim Weber

Students desiring to turn out for the gymnastic team can contact Mr. Gyorgyfalvy in the Health and Physical Education office.

\*\*\*



## Nurses Receive Test Scores

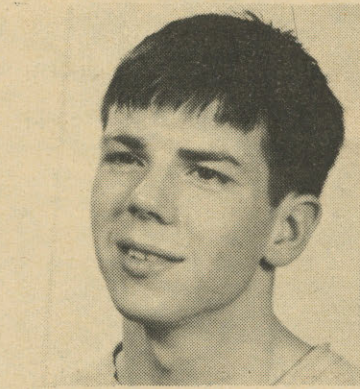
Practical Nurse students who graduated in August of '68, received State Board Test Scores all exceeding the national average.

The class, which is a four quarter vocational course, began September '67 with twenty students.

The twenty girls who completed the course and took the National Exam in October, received their scores from New York (the examination center) last Wednesday, Dec. 4. The results showed the class average to be 579.9. The national mean for this test is only 500, according to a department spokesman. Nine out of the twenty, scored above 600 and another nine scored above the 500 mark. The passing score for this test is 400.

According to Arlene Underhill, "Most of the girls are employed at Eugene's Sacred Heart Hospital. All who wished employment were given jobs immediately." She said the graduates work "at everything from Neurosurgical to the Intensive Care Ward."

LINDA WALTON



Wally Blood will be wrestling at 123 lbs. today when the Titans meet the U of O Frosh.

## WRESTLERS OPEN WITH UO FROSH

Coach Dick Newell takes his varsity grapplers to the University of Oregon today to open the season against the U of O Frosh.

LCC's probable lineup is:  
123 lbs. Wally Blood  
130 lbs. Randy Crockett  
137 lbs. Claude Eberle  
145 lbs. Curt Wicks  
152 lbs. Kim McKinzie  
160 lbs. Rick Hammons  
167 lbs. Rick Christensen  
177 lbs. Dave Hise  
191 lbs. Jess Rogers

Lane's first scheduled match with Central Oregon Community College last Friday was cancelled because of hazardous weather conditions.

Experienced wrestlers are invited to attend the daily work-outs from 2:00 to 4:00 P.M. in the auxiliary gym.

## CLASSIFIEDS GET RESULTS

## INTRAMURAL HOOPERS BEGIN TUESDAY AFTERNOON IN GYMNASIUM

The Intramural Basketball League begins today, Tuesday, in Mike Raz vs. Paul Johnson at Gym 2. 4:15 p.m. and Dave Raines vs. Joe Ray at 5:15 p.m.

The following games are scheduled: Corky Howard vs. Larry Fullerton at 4:15 p.m. and will be printed in next week's edition of the Torch. Lynn Johnston vs. Jim Purs- celly at 5:15 p.m.

On January 16, Thursday, the

## BABY SITTING EXCHANGE CONSIDERED AT LANE

Would you be interested in an Exchange Baby Sitting Service on the LCC campus?

A plan is being developed that would involve a 1 or 2 hour adult ed. class, plus time in the child care center, in exchange for 2 or 3 hours of baby sitting per day.

If you are interested in participating in this type of program, complete the following form and turn it in to Jack Carter's office.

### EXCHANGE BABY SITTING

Name

Address

Phone

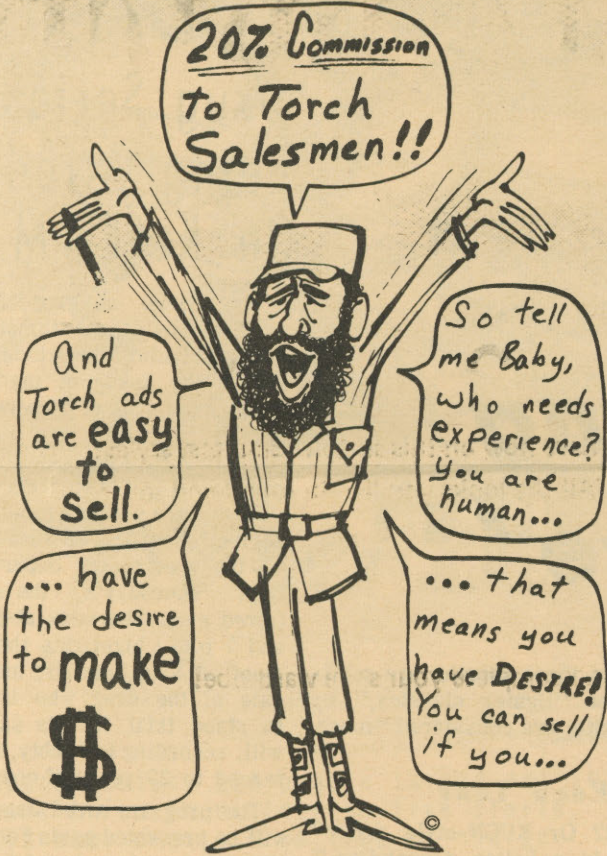
Children

How many hours per week do you have need for on campus Baby Sitting?

How many hours per week would you be able to devote to Baby Sitting?

Would you be willing to spend 1 or 2 hours per week in an Adult Ed. class that focuses on child care?

## Looking for Opportunity?



CONTACT DEBBIE JENKINS

Phone LCC Ext. 253

or home: 343-0835

Short sales staff meeting Thursday, Jan. 16

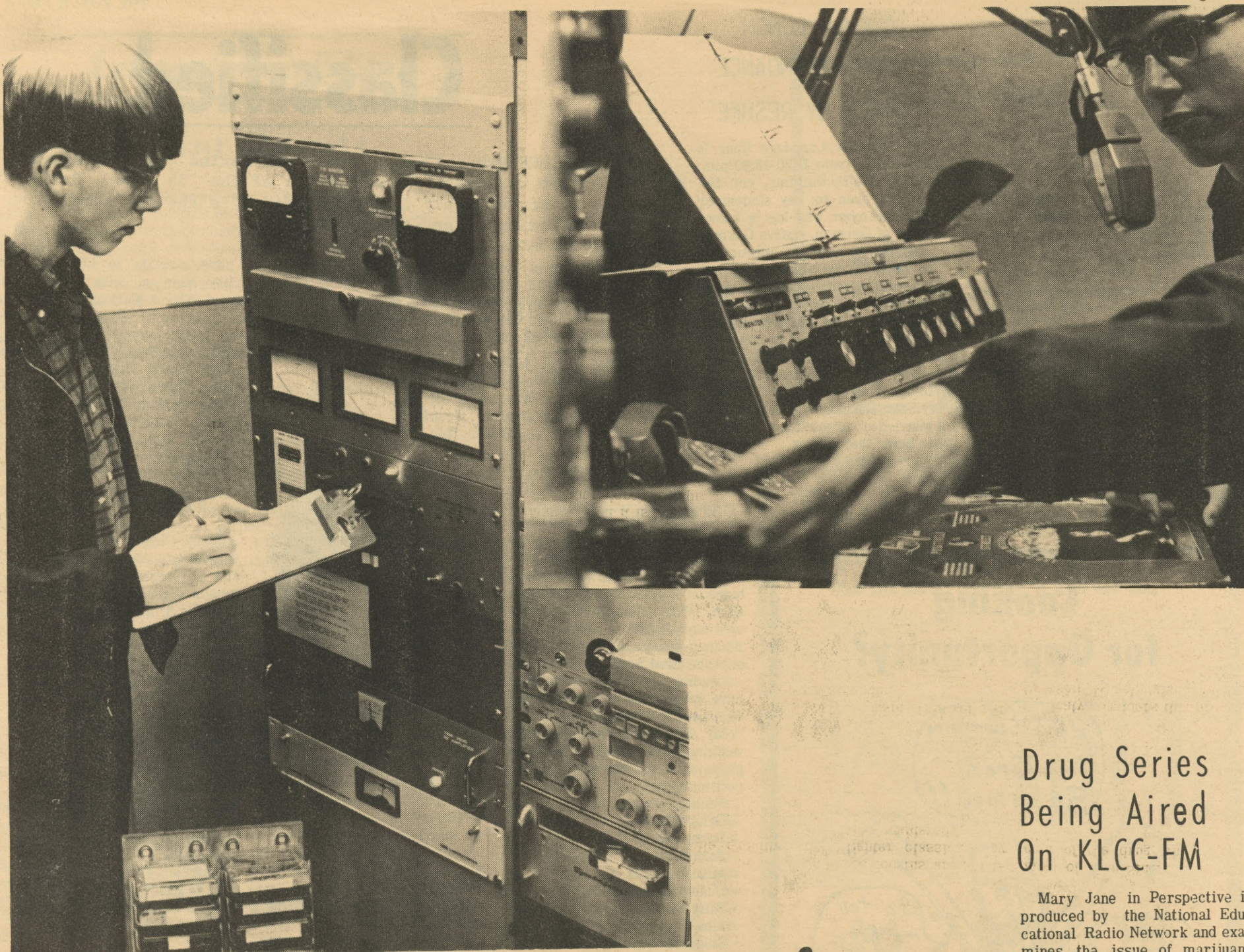
9 a.m. or 4 p.m. in the Torch Office, Health Building

**FENNELL'S**  
SUITS  
WEAR  
LIKE  
IRON

Phone  
345-1361  
860 13th Ave.  
Eugene, Oregon 97401

Quality Clothes for Men Who Care





## Students, Programming Make KLCC 'the Voice'

Story and Photos  
by Jerry Foster

Speaking with the well-oiled richness of a California politician, Lane's father of radio talked well over an hour about his broadcasting baby.

"KLCC-FM, 90.3 megacycles, Eugene--the voice of Lane Community College," as the DJs might say it, is two years old, but despite its infancy, is nearly ready to switch from monaural reproduction to broadcasting rich stereo fidelity to the Upper Willamette Valley.

Roger Houghlum, Lane's grand old man of radio for 30 years said the station is a lab facility for the broadcasting class--a vo-tec course leading to an associate of science degree.

He said his students are not necessarily prepared for commercial jobs in radio, especially the first year students--though "every May or June they start dropping out like flies."

Are they ready?

"Not really."

According to Houghlum, Broadcasting I "familiarizes students with the electronic equipment, the record library facilities" but "the most important single skill they'll learn here at LCC is reading aloud," he said, then repeated--"reading aloud, reading aloud so well that it sounds like you're talking."

### Criticized for Mismanagement

KLCC has been heavily criticized in the past by students--and some professional radio people--who feel the station has been mismanaged by Houghlum. Advocates of change suggest the students would be better off without the present "canned programming." Their reference is to KLCC's affiliation with National Educational Radio, a tape network which supplies some of the station's programs.

Houghlum calls it "wall-to-wall programming."

We (KLCC) are an educational station, says Houghlum, and we are still responsible to our listeners.

But what about the students pushing the buttons for a taped program?

They "probably do not get a whole lot out of it," said Houghlum. "KLCC will never be another rock'n'roll station," Houghlum said, but indicated KMPS, a low power AM station on campus, probably will.

"KLCC's audience represents 200,000 potential listeners in the Upper Willamette Valley," whereas "KMPS's audience represents the LCC student body and nobody else." He said music tastes are much different. And it (KMPS) will provide training in another area because it fulfills a different need.

At 700 Kc. KMPS can be heard in the North parking lot and, according to student Manager Marsh Johnson, will be wired into

the Student Center.

Of the 1500 albums KLCC owns, about three-fourths are semi-classical and popular. He explained the "lighter classics," by such artists as David Rose or Percy Faith, are considered "more by the arrangement than by the title."

### Adds 400 Records Each Year

Isn't that like CBS's Chicken Rock? Or KUGN-style music? "Yes. Probably middle-of-the-road is a better description." But "nearer to programming like KXL in Portland"--music for a wide spectrum of tastes, with emphasis on music. This reflects on the training program. They must program music.

"you'd be surprised," he said, "how their music taste has picked up in the last six or eight weeks." Houghlum called this: "rewarding. All they knew was rock 'n' roll because that's all they'd had experience with."

For those who may thin stereo broadcasting might be superfluous to the educational process, Houghlum explained that "record companies are going that way. It costs as much for monaural as it does for stereo," he said. And "stereo adds a great deal of richness to sound." It doesn't make any difference in talking, he added, but it is "incomparably better for music."

All the stereo equipment is paid for, said Houghlum, but we're lacking one peice. That is a \$5,000 to \$6,000 peice of reinforced aluminum called a "passive reflector--that means it doesn't have to do anything," he said. Its job, atop a ridge North of 30th Avenue, is to reflect a microwave signal from campus to KLCC's transmitter on Blanton Heights.

KLCC is currently broadcasting monaurally via telephone lines. Stereo cannot be broadcast this way.

## Drug Series Being Aired On KLCC-FM

Mary Jane in Perspective is produced by the National Educational Radio Network and examines the issue of marijuana through the eyes of doctors, university officials, the Federal Narcotics Bureau, the police, researchers, and lawmakers.

There are six programs in the series, according to Tom Lichty of the electronics department. Next Thursday's, the second (aired each Thursday at 11 a.m. and 7 p.m.) highlights the comment of John Sinclair, an advocate of the drug who is about to stand trial for its sale. He will, according to Lichty, be sentenced to 20 years if convicted.

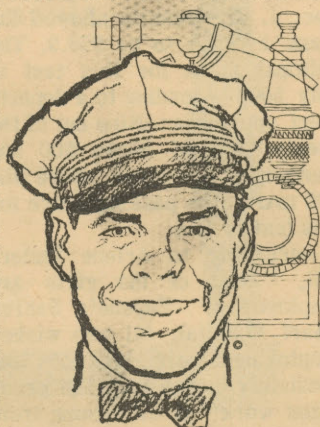
The program aired January 9 will be presented again February 20 for those who missed its first presentation.

Lichty considers this program "extremely enlightening" in the light of a society "where drug usage is practically of epidemic proportions."

Another program, rated highly by Lichty, is Focus. Heard each weekday evening at 7:30, it features a diverse musical offering running all the way from the classics (Music of the Masters) to contemporary jazz (Jazz 90).

"The students who host these programs, commented Lichty, "do an excellent job of planning and presenting them." He said he is "very happy with their product."

These programs can be heard on KLCC-FM, 90.3 mc.



Service with a Smile

## STALLING'S Texaco

Your LCC parking sticker entitles you to a 2¢ per gallon of gas discount. AND THAT ADDS UP!

GAS, OIL, and OTHER DISCOUNTS  
to STUDENTS & STAFF

30th Avenue Exit  
(Gasoline Alley)

phone 746-9320