

# editorial

Student elections are at hand--once again we will be asked to participate in the delusion of student representation and student rights. It's interesting to note the only position being seriously contended is the one that has a monetary reimbursement. Never before has so little meant so much to so many.

Last week the TORCH offered an alternative to this situation. We advised readers to write-in a demand for a new form of student government. Since that time it has become apparent that our student leadership has no idea of what to do with write-in ballots. There is nothing written down telling them what to do with them.

The TORCH suggests that when you add the write-in ballot you add a note telling them what to do.

The TORCH has a policy of remaining apart from partisan politics--participation in this area tends to discredit objectivity, the heart of any journalistic endeavor. The TORCH also feels a responsibility to speak out on issues of importance, and therefore is offering endorsements on both student and community elections.

In the student race the TORCH is limiting itself to a single endorsement.

In the race for Senator-at-Large the TORCH gives its endorsement to John Luna. While it is recognized that Luna intends to spend only one term at LCC it is felt he will do the most to benefit the Student Body.

Luna does not make the pretension of working for the general good of the world, "A chicken in every pot." He has a definite goal--one that will bring the issue of Student Government's efficacy out in

the open and guarantee the students a voice. A BREATH OF FRESH AIR IS LONG OVERDUE IN THE Senate chambers and Luna will provide it. The TORCH recommends you vote for John Luna for Senator-at-Large.

In the General Election of Nov. 5 the TORCH has two endorsements for State Legislature.

In the Fortieth District the TORCH endorses Dave Frohnmayer for State Representative.

Both Frohnmayer and his opponent, Norm Pott, would make admirable representatives. But the TORCH feels that Frohnmayer's depth of experience in politics and constitutional law will best serve the public. Frohnmayer has had experience working for Elliott Richardson, in Washington, and has twice won national awards for Constitutional law.

The TORCH feels, however, the overwhelming reason for electing Frohnmayer is his party affiliation. While there are many Democrats of high caliber running for office, it is not often we have the opportunity to vote for a competent and forthright Republican. The strength of our two party system is based in representation of both parties.

In the Forty-first District the TORCH endorses John Stewart for State Representative.

As a student at the UO Stewart is familiar with the problems and needs of students. He supports student control of student fees--with an attendant responsibility for collection and accountability.

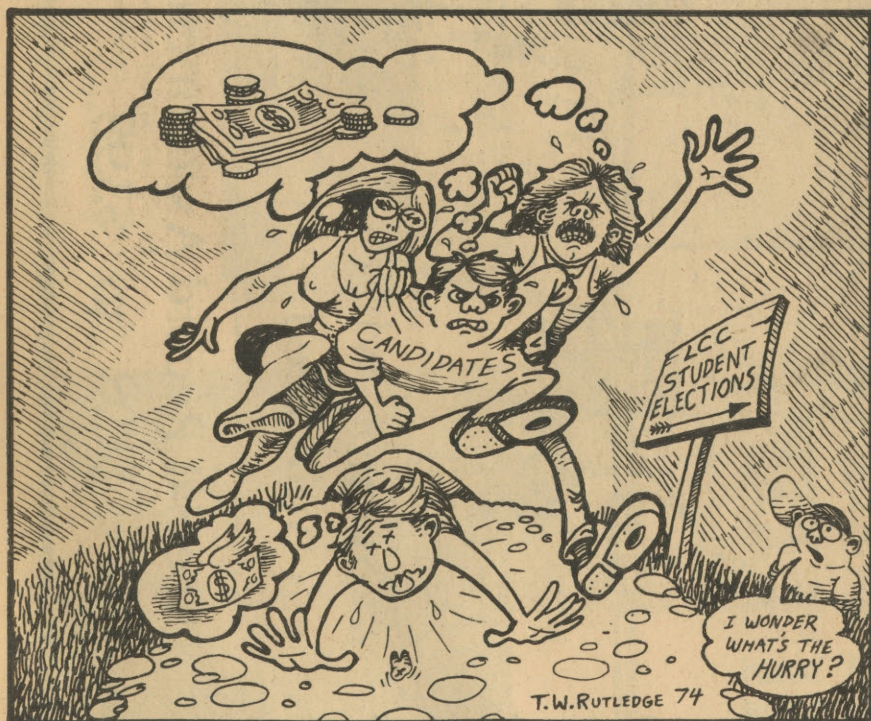
When elected Stewart will work for energy planning and conservation, he opposes nuclear reactors, land use planning and public campaign financing.

We cannot afford to lose the chance to elect a student to the State Legislature. Elect John Stewart on Nov. 5.

## TORCH Staff

editor	John Loeber
news editor	Jan Brown
feature editor	Mac McKelvey
photo editor	Jane Robertson
art director	J. Peter Johnson
sports editor	Hugh Brennan
production manager	Michael Weiss
copy editor	Bob Jones
ad manager	Norma Van
contributing editors	Robin Burns Barry Lowe Theresa Doran
graphics	J.D. Moore
reporters	Linda Brundige Karma Adkins Mike Heffley Ken Fitzgerald Garry Federow Francie Killian
photographer	Mark Rahm
editorial assistants	Linda Cuyler Linda Alaniz
cartoonist	T.W. Rutledge

Member of Oregon Community College Newspaper Association and Oregon Newspaper Publishers Association.  
The TORCH is published on Tuesdays throughout the academic year. Opinions expressed in this newspaper are not necessarily those of the College, student government, or student body. Nor are signed articles necessarily the view of the TORCH.  
All correspondence should be typed or printed, double-spaced and signed by the writer. Mail or bring all correspondence to: TORCH, Center 206, Lane Community College, P.O. Box 1-E, Eugene, Oregon, 97401. Telephone: 747-4501, ext. 234.



Oct 29 '74

# TORCH

lane community college

October 29, 1974 Vol 12 no. 6  
P.O. Box 1E Eugene, Oregon 97401

photo by Jane Robertson

## Food services revealed

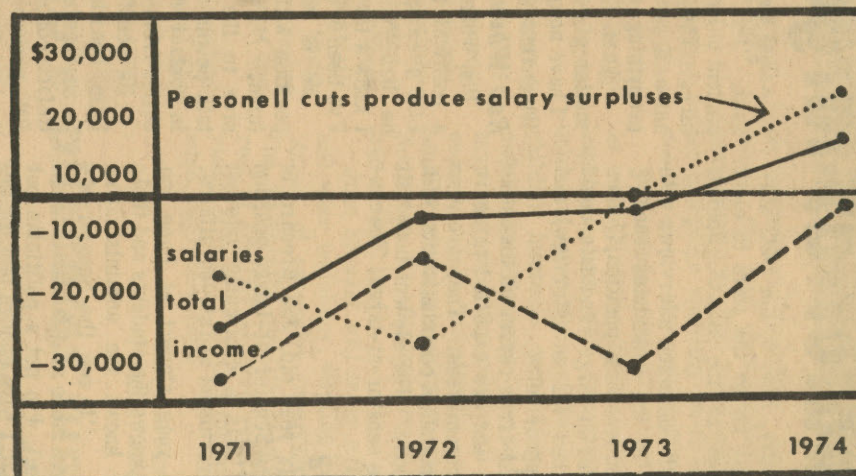
### TORCH ANALYSIS

While questions, and criticisms, about the food at LCC are a common occurrence, a greater problem has shown up. Food Services is running over \$50,000 deficit as a self-sustaining operation.

While the current Food Services accounting system shows a carry-over of \$15,000 for last year, the addition of janitorial services and natural gas costs give an entirely different picture. The clean-up bill alone is about \$42,500 annually and the gas bill \$1400--and will soon be increased by 50 per cent as gas prices increase.

This still doesn't include any capital replacement monies--without which Food Services may face catastrophe within five years. Tony Burch, dean of Fiscal Planning, estimates Food Services should be putting away over \$27,000 a year for capital replacement and remodeling. He

(Continued on page 1)



Graphic presentation shows Food Service deficits are being countered with personell cuts



# Hyperactivity Linked to Food Additives

by Theresa Doran

"Hyperactivity in children has become a critical epidemic in this country--affecting at least 50 per cent of school-age children," according to Ben Feingold, MD, chief of Allergy at the Kaiser Medical Center in San Francisco. Feingold was speaking at a workshop held by the Lane County Mental Society at LCC Saturday.

Feingold discussed findings he says conclusively link hyperactivity in children to certain food additives, especially food flavorings and colorings. Feingold maintains the only difference between food additives and actual drugs is one of semantics.

He says the symptoms of hyperactivity vary from child to child--even from hour to hour--depending on the intake of additives. The child usually can not sit still, is compulsively aggressive, impulsive, has a short attention span, poor sleep habits, is exceptionally clumsy, with possible learning and perceptive disturbances and is usually very frustrated.

These behavioral disorders can appear in children of all ages, Feingold says, from infancy through puberty, with a ratio of eight boys for every girl with hyperactivity, and rarely more than one child per family.

He says that of the estimated seven million children with retarded reading ability in the US, four to five million have been diagnosed as hyperactive--and about two million of these are receiving treatment with drugs such as amphetamines, the usual treatment for hyperactivity.

Feingold says the problem of hyperactivity surfaced during WWI when additives for food were first developed and put into wide-spread use. He claims that hyperactivity in children has paralleled the popularity of convenience and fast foods such as hot dogs, soft drinks, breakfast cereals and cake mixes: foods that are highly refined and use a great deal of artificial coloring and flavorings.

He says that people are trained from birth to respond to additives which are first introduced in baby foods. Feingold says this is done, initially, for the parents' sake--that babies can't tell the difference between bland foods and those with additives.

Feingold has designed a diet free of artificial colors and flavorings which, he says, has shown 50 to 60 percent positive results. "Hyperactive children put on this diet have normalized within three weeks," says Feingold, and that in use, "the diet has proven to be less expensive than the child's previous diet containing additives."

The idea, he says, is to eliminate additives from the diet--and he feels colorings and flavorings are the prime offenders with preservative being too much a part of our system of food distribution to be easily eliminated.

His diet, along with menus and recipes, is included in Feingold's book "Why Your Child is Hyperactive," published by Random House.

Feingold is currently involved with a research group funded through the National Institute of Education, a division of HEW, to further investigate his findings using a double blind testing method.

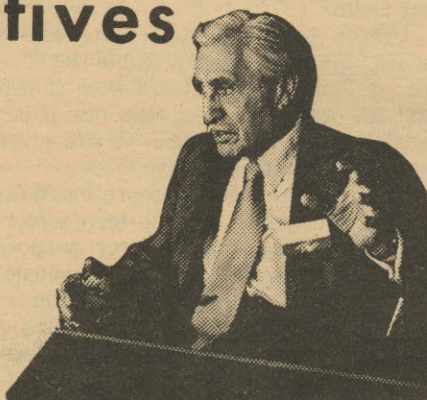
He has gone to the Federal Drug

(Continued from front page)

says that without these provisions the operation will face remodeling and equipment replacement bills when the carpets, grills, ovens and dishwasher break down--to a possible tune of \$250,000--without any financial back-up.

To find the reason for this dilemma the TORCH had to look back through nine years of LCC's history.

When the College was first built the Food Services was designed as an instructional area. As such its overhead was absorbed by the General Fund. Through the years this situation has changed, and now the Food Services area has only 19 students--but still doesn't pay for its overhead.



Dr. Ben Feingold

Administration (FDA) with a proposal for using a symbol on food products packages to indicate the absence of artificial flavors or colorings. Feingold says there has been only a "fragmentation of legislation" controlling the compounds of food additives. Part of the problem, he claims, is that there are currently nine agencies at the Federal level responsible for quality control of foods, and that once a substance has been classified by one the others ignore it. He says this leads to a minimization of studies.

As a final point, he said the parents of hyperactive children should not feel guilt or blame the children, but that the problem is "the fault of the environment." He says most hyperactive children are actually very intelligent and loving--it is the additives that cause problems they can't control. •

## Board sets September election Schafer: 'All our eggs in one basket'

A four to three vote of the LCC Board last Wednesday set September 16 as the date for the College's next budget election. The decision was narrowly contested, with Eldon Schafer, College president, terming it, "Putting all our eggs in one basket." The Board will still have one date in November for a second budget try if the September election fails.

The Board actually had six dates to choose from between January to November, and the possibility of going for a two-year levy. Schafer provided an overview of the choices for the Board, emphasizing the importance of budgetary planning. He favored an election date of May 6 when the College would have an election for Board members but felt there would be strong points in both early and late dates, with little support for a summertime election.

He said a late date would provide billing information from the previous year, commitments of public grants and collective bargaining agreements.

On the other hand he felt an early election was called for due to planning requirements, summer school funding and registration for Fall Term.

While the Board was evenly split in support of election dates, the September date was strongly opposed by members of the College staff.

Karen Lansdowne, a Language Arts instructor, said she could speak for the staff in saying a late date would cause staffing and curriculum planning difficulties--leading to staff insecurity. "It makes it very difficult to carry-out anything but last minute preparations," she

## Food services revealed...

"Maybe that's poor planning--maybe it's liberal planning," according to Bill Cox, superintendent of College Facilities. Either way it spells trouble for Food Services--and LCC--in the years ahead.

Looking back just a few years we find the Food Services has a tradition of running in the red. In 1971 it had a deficit, without overhead, of over \$20,000. For the next two years it ran about \$7,000 behind (each year). Last year Food Service finally broke into the black, by \$15,000.

But the reason for this positive shift was not one of good planning or efficiency of operation--it was because Merlin Ames, the director of Food Services, worked two

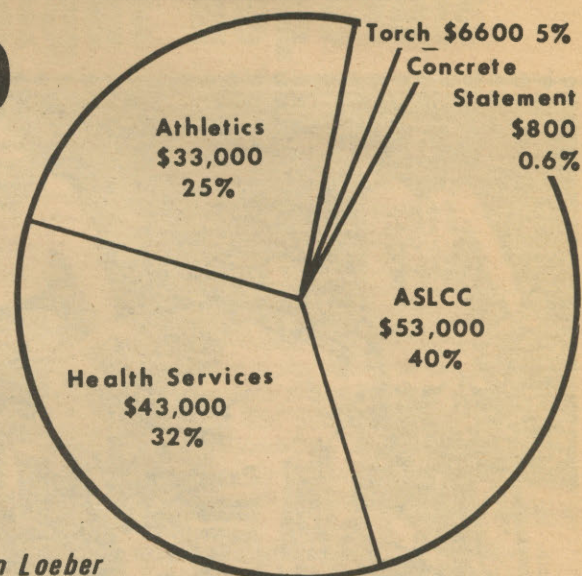
## \$137,000 Budget Passes For SPAF

by John Loeber

The \$137,000 Special Programs and Activities Fund (SPAF) budget was approved by the Board Wednesday night after heated debate.

The passage of the SPAF budget ended nearly four months of deliberations by the SPAF committee and finally allows the student service organizations funded through SPAF to plan for the 1974-75 fiscal year. Among the groups funded through SPAF are the ASLCC, \$53,000; Health Services, \$43,500; Athletics, \$33,000; TORCH, \$6,600; and the Concrete Statement of studies, \$800.

The main deviation by the Board from SPAF's original recommendation was in the Athletics budget. On Jack Carter, dean of students, recommendation the Board increased the Athletic budget by \$3,000. This amount was taken from SPAF's contingency fund, reducing this to \$1,500.



While approving the SPAF budget, the Board called for administrative clarification in three areas within the ASLCC BUDGET: Personal Salaries, Student Resource Center (SRC) and the Evening Program Advisory Committee (EPAC). The Board had questions in these areas after Jack Carter, dean of students, presented it with three unanswered questions.

• In the area of personal salaries Carter felt the paying of salaries, in addition to tuition grants, "increases the hazard that Student Government will become the first priority. It would tend to increase the pressure to earn the salary, possibly at the expense of other educational activities."

• The \$5,000 SRC budget was questioned as to amount. Carter claimed, "There apparently is some confusion or disagreement as to the amount of funding required for this program."

• The EPAC's budget of \$3,500 was questioned about administration. Carter stated, "It is my recommendation that a hold be placed on this item pending the development of a more detailed budget." He also advised a College staff member be assigned to supervise this budget item.

Early in the debate on the SPAF budget the Board voiced a consensus opinion to delay any decision until its next meeting--the Board felt there was not enough information at hand to make a valid decision.

At this point a unified student voice convinced the Board the issue was not one to be taken lightly. A succession of student leaders including Sallie Torres, student body president, Mike Chudzik, director of SRC, Ed Langston, coordinator of Health Services, Rick Mathews, coordinator of SRC and John Loeber, editor of the TORCH spoke against any delay.

They told the Board that any delay would be considered proof that the Board was not willing to deal fairly with students--and force students into forming a power base for future negotiations.

Jay Jones, director of Student Activities, said this lack of communication was due to limited and insufficient guidelines for SPAF. "We have no intentions of putting in time and energy to have decisions reversed (by the Board), not due to guidelines, but due to 'feelings' that are not based in rules," Jones exclaimed.

The Board's final decision was to pass the budgets as presented, with the understanding there would be administrative clarification of the items questioned.

Asked after the meeting about specific intent, it was the consensus opinion of the Board that the situation should be handled without another appearance before the Board--unless the students could not get satisfactory results from the College Administration. •

full time jobs and took only his normal salary. Serving double duty as both manager and chef he saved the operation nearly \$12,000.

"Our self-sustaining account will have to bear more of the cost of operation," according to Brownell, including equipment replacement and remodeling.

In the meantime Food Services continues to function. "We have a policy of keeping cost down and making food available to every student," says Ames, and Brownell adds that, "Last year food

costs ran 55 per cent of the Food Service operation, compared to a national

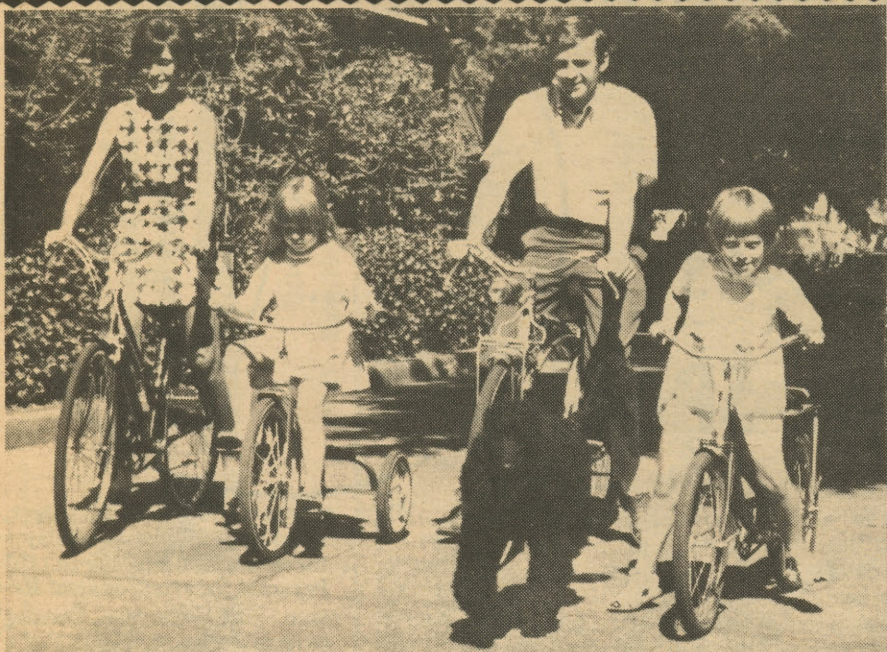
average of 45 per cent for colleges."

This is partly due to food preparation he says. "We make our own hamburger using 92 per cent lean beef and 16 per cent fat," he explained. "Fat is what gives hamburger its flavor." Brownell claims Food Services hamburger is much leaner than in the average quick service restaurant where there is up to 30 per cent fat.

This kind of preparation doesn't make up for faulty planning, however. Last year the operation over-estimated food sales by \$27,000--and by over \$45,000 each year in the three preceding years.



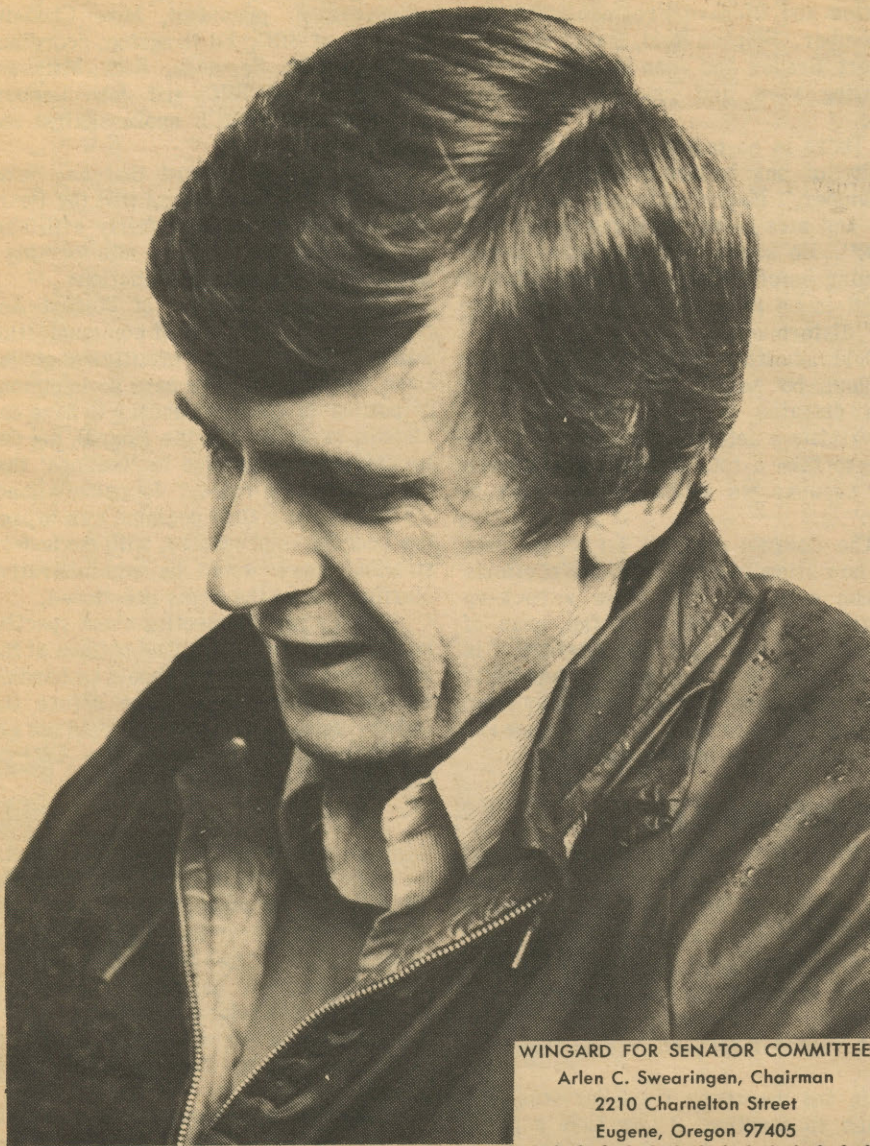
# LETTERS TO THE EDITOR



- Who was the only senate sponsor of the Bicycle Trails Bill of the 1971 session ?
- Who wrote the Field Burning Cut-off Bill ?
- Who is the only state senator with a 100% Oregon Environmental Council voting record for two consecutive legislative sessions 1971-1973 ?
- Who was one of the first state senators to file the "Common Cause" voluntary financial disclosure statement ?



- RE-ELECT PROVEN PUBLIC SERVICE ●



WINGARD FOR SENATOR COMMITTEE  
Arlen C. Swearingen, Chairman  
2210 Charnelton Street  
Eugene, Oregon 97405

## Stewart supporter

Dear Editor:

Oregon has long had a progressive record in passing responsible legislation at State levels. Let's keep it that way and wash the deadwood out of our legislative chambers when we are given that chance on election day.

The wisdom of our representatives in Salem to foresee the long-term effects of any bill they may back or propose is a most important asset of the people. In this respect District 41 Representative Burrows appears to be running a "deficit." The incumbent strongly supported Senate Bill 708, aimed at curtailing obscenity wherever it might be found. This bill would violate the rights granted to us under the first Amendment of our national Constitution.

She voted against creating sanctions to enforce nursing home standards. She voted against a corporated excise tax measure and against increasing taxes

on business automobiles. She voted to repeal the land development consumer protection act. She voted against stricter campaign spending limits and against door-to-door voter registration.

The wisdom of incumbent Burrows is suspect. A "middle-of-the-road" representative who considers business interests over those of the environment childish interests over those of adults, and her party's over those of the public, may stay in office unless all of a concerned, yet historically complacent student electorate goes to the polls on November 5. Students make up nearly half of District 41.

John Stewart will make a responsive and wise legislator, working to check the abuses of excessive government power. The University district as well as the rest of District 41 deserves this active, young student of politics for responsible, wise, representation.

Barry Brown  
Political Science, UO

## Student senate allocates funds

by John Loeber

The Student Senate spent most of its Thursday meeting spending student money--and trying to decide how it could

be responsive to student needs.

Four club budgets were passed, at \$75 each, including a new Film Club, Student Nurses Club, ASHLane Tenants Club and the Women for Equality Club. a \$400 loan for the Photo Club was tabled for more information, while a \$500 loan for SHOP, consisting of ex-inmates on school release from penal institutions, was approved. The SHOP loan will be applied to a bail fund for a community member now being held on charges by the County, with terms of repayment being developed by the Student Attorney, Eric Haws.

A motion to affirm \$7,500 in personal salaries for the ASLCC Executive Cabinet was tabled until the next Senate meeting. There was considerable opposition to the concept of paying salaries for Cabinet members, with Senator Jerry Edin stating, "The original budget committee had set salary levels (for the Cabinet) that were later raised during Summer Term by the same Cabinet that will receive the salaries."

A motion by Tappan to endorse the salaries retroactive to July 1, contingent upon development of job descriptions and accountability, was tabled to a later meeting. ●

**The Gatehouse Welcomes  
New Students To The Area**

**Favorite Beverages  
Food — Pool  
Live Music 8:30 pm. to  
1:00 am. Sun.-Thurs.  
BELTLINE & I-5**

For more information on how this number affects you, be sure to attend the Vets Club meeting Wednesday, October 30, at 2:30 p.m. in APR 221.

9a. Type of Separation	Released From Active Duty
c. Authority and Reason	MARCORSEPMAN 203
e. Character of Service	HONORABLE
11. Last Duty Assignment and Major Command	MTMCo, MaintBn, 1stFSR, FMF
DD 214 MC	

# VETS CLUB

"Energy Savers Deserve Lower Rates"

**Marian  
Frank  
for EWEB**

At Large

Paid: Marion Frank for EWEB  
Committee, 2473 Columbia St.  
Eugene, Oregon 97403  
Margaret Patoine, Treasurer.





# Allende widow to Uof O

by Robin Burns

"There has never been as much repression as there is now in Chile, nor was there ever as great a liberty for the Chilean people as under the presidency of Allende," stated Hortensia Allende in Eugene Monday morning.

Allende is the widow of late Chilean president Salvador Allende who died in the military coup that overthrew his government on Sept. 11, 1973. Allende, here as a participant in the University of Oregon's Perspective on Chile conference, spoke at a press conference about her husband's government, the military takeover, and current conditions in Chile under the junta.

Allende referred to a speech her husband had made before the United Nations in December, 1972, in which he denounced the intervention of the International Telephone and Telegraph Company (ITT) and the Central Intelligence Agency (CIA) in the internal affairs of Chile.

Ford later confirmed data furnished by the CIA and that their object was a multi-party democracy and freedom of the press, the widow asked, "Does Kissinger have the same worries now that there are no political parties in Chile, now that the Congress in Chile is completely closed down, now that the press is effectively gagged?"

Because of a three party split in the 1970 Chilean elections, Salvador Allende, as the candidate of the Unidad Popular (a coalition dominated by Marxist parties), was able to capture the presidency with only 36 per cent of the vote. But, according to his wife, "Chile was a model of democracy." She is certain that the "government of popular unity would not have failed without foreign intervention."

She claimed that the electoral vote went from the 38 per cent in 1970 to 44 per cent in favor of Allende in March, 1972, despite intervention from abroad. She maintains that her husband's regime was "not a Marxist dictatorship" as the foreign press has said.

Allende, speaking through an interpreter, told the members of the press that the Chilean people are now struggling for democracy, and that "unity and resistance



of all Chilean people can overthrow the fascists."

She listed a number of Chilean officials and generals (who served in Allende's regime) who have allegedly been imprisoned, tortured, or killed by the junta. She said that there are over 600 political prisoners in Chile at this time.

She claimed that "never has the US given so much armament to Chile than at this moment, help that is given in armament is superior to monetary help that is why I have come to beg the US

that is why I have come to beg the US people for intervention in all that concerns the selling of arms to the Chilean junta." She stated that this plea was the object of her trip.

She said that she had problems from the CIA and the US State Department in obtaining a visa for this tour, and that her personal secretary was denied a visa.

Allende is scheduled to give a speech tonight at 8 p.m. in the EMU Ballroom. A one dollar admission fee will be charged. Eugene is her first stop on a speaking tour through the USA. •

## Student groups search for office space

"College growth has literally pushed the group meetings out," stated Bill Cox, chair of the Lane's Non-Instructional Facilities Committee. He was referring to the fact that of the 1,074 assorted rooms on this college campus there are none available for student or cultural groups to use on a full-time basis.

Many campus organizations lost their office space due to the remodeling of the fourth floor of the Center Building last spring and summer.

In its October 21 meeting the Facilities Committee decided that the four clubs which had already requested space will be given the area next to the Veteran's Affairs office, an area 20 feet by 30 feet, to use for storage and files. It also offered classroom space, when not in use, to campus groups for meetings. But the question of full-time office space was left undecided.

## Titan Runners to Regionals

Defending Champion LCC travels to Twin Falls, Idaho this Saturday for the Northwest Regional Cross Country Meet.

Lane advanced to the Regional Meet after winning the Oregon Community College Athletic Association (OCCAA) Conference Championships Saturday at Coos Bay. The Titans amassed a low 20 points with Central Oregon a distant second with 42 markers.

Lane's Rod Cooper won the race in 25:44 and the Titan's John Miller took the runner-up position in 26:21. LCC's Jeff Boask, Carl Johnson, and Glen Owen finished fourth, sixth, and seventh to gain All-Conference first team berths along with Cooper and Miller. •

The five construction trailers now sitting to the North of the Mechanics Building will eventually be available for college use and could house student group offices, "But that won't be for six months," said Cox.

His office is presently accepting requests for space in those trailers. •

## LCCEA signs pact

The LCC Board opened the way for a collective bargaining contract covering the College's faculty last Wednesday when it voted to accept an agreement between the College and the LCC Education Association (LCCEA).

The contract, which includes an 11.3 percent salary and fringe benefit increase, will now go to a faculty vote on Thursday at 3 p.m. If accepted by the faculty the contract will immediately go into effect and cover all faculty who work half-time or more.

This is the first time LCC's faculty will have the benefit of a collective contract, as provided by Oregon's 1973 public employees collective bargaining law. The college classified personnel have been under contract since early this year when their representatives negotiated a 10.95 percent contract.

If the faculty accept this contract there will only be two groups on campus without collective contracts: the Administration and the Student Body. Eldon Schafer, College president, will submit a pay increase proposal to the Board at its next meeting. The Student Body is currently unrepresented in collective bargaining. •

## NEWS CAP

### "Different" people to visit class

by Mike McLain  
Homosexuals . . . lesbians . . .  
witches . . . drug addicts . . .  
juvenile delinquents . . . alcoholics  
. . . social nudists.

These and many other types of people are known as "deviants" according to Rod Metzger, instructor at LCC. His Sociology 211 class will be visited this term by people who have the "abnormal" behavior patterns listed above.

Metzger explained that by definition a deviant is anyone who "falls outside the elusive social norm, or the average of social behavior." Deviancy "makes no distinction between harmful or beneficial abnormalities, and even the handicapped are included in this group," says Metzger, who is restricted to a wheelchair himself.

The purpose of the class will be "to dispell some of the myths created by a society that tends to see things in terms of black and white instead of the many shades of gray that there really are," said Metzger.

### Field hockey

#### 1 win 1 tie

by Clair Johnston  
The LCC Women's field hockey team, coached by Debbie Daggett, played two conference games Saturday on Autzen Stadium's astroturf.

The four-team event was sponsored by the UO and co-sponsored by LCC. Also participating in the "Hockey Jamboree" were Southern Oregon College and Willamette University.

LCC won its first game against SOC by a score of 1-0. The single score was made by Caryn Howarth, one of LCC's four new players.

The second game, against Willamette University, was tied 0-0.

According to Daggett, these games are played more for the enjoyment they offer than to win.

She said that since the astroturf gives less friction than grass, the game tends to move faster and provides more of a test of each girl's individual ability.

The team's next tournament is at Pacific University in Forest Grove this Friday. Then on Saturday it will play the OSU varsity.

### Chicano history offered

by Manville Jennings  
Two classes in Chicano studies will be offered Winter Term--both had been canceled from the Interdisciplinary Studies Program earlier this fall.

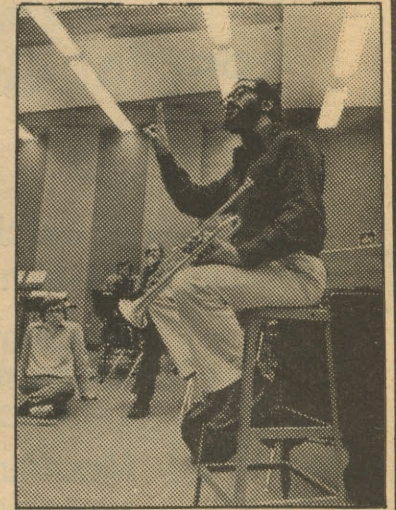
The two classes will deal with Chicano history in the United States and in Mexico. Each will carry three college transfer credits.

In agreement with the Chicano Student Union (CSU) the Interdisciplinary Studies Department has requested that Manuel Pacheco be rehired as the instructor. According to a CSU spokesman, "Pacheco is more than qualified. With his combination of philosophy, Chicano history and his close relationship with the Chicano students, he is the most suitable man for the job."

Asked why the two Chicano history classes were withdrawn earlier this term, Bill Powell, department chair, said that poor enrollment in the classes last spring, combined with a \$1,700 department budget cut this Fall, made it necessary to discontinue one of the classes.

Powell then stated that the instructor, Pacheco, couldn't afford to teach only one class, thus ending the courses all together. Powell later mentioned that by cutting back on his staff the Department could now afford to add the two Chicano history classes to the program this Winter. •

### Big band leader Mike Vax leads seminar



### Flute duo free

by Mac McKelvey  
Wednesday, October 30, Barbara Myrick and Marcy Lohman will perform, Duo Flauto: Music for the Flute. Baroque to Modern. They will be assisted by Gary Ruppert. The concert is free of charge and will begin at 8 p.m. in the Choral Room of the Performing Arts Building. •

### Free tutors available

by Alan Cockerill  
Climbing to the fourth floor of the Center Building will give a student more than a good work out. The Language Arts Department has a special tutoring program for students needing assistance in Spanish, French, English Composition, and Film as Literature.

Tutors are selected by course instructors according to abilities demonstrated in class. Tutors selected are from the second year program and receive either work-study compensation or transfer credits towards graduation.

Tutors are located in the area just outside the Language Arts Department offices. Each tutor has an assigned table, where course title and schedule of available lesson times are posted.

Students wishing tutored instruction have the option of adding on one hour of non-transferable credit. •

### And free wood (almost)

by Pat Lovette  
If you have a fireplace but no wood to burn, the Wood Co-op may be just what you're looking for.

The Wood Co-op offers a way to get the wood in turn for some work in the woods, or cooking some meals.

According to Spokesperson David Barajas, "The Wood Co-op has been around for a little over four years. It provides an alternative to the standard method of buying wood every winter for your fireplace or any other needs you might have for wood fuel."

The Co-op is a cooperative, non-profit organization--it has no paid employees. "The people pool their resources (pick-up trucks, chain saws, time, etc.) and they make the organization work. This year we are receiving the largest response that we have ever had. But, it always ends up to be a small number of people working together," said Barajas.

"Right now we have three chain saws and a couple of trucks at our disposal. One of the trucks is an old flat bed truck. We go up into the woods and chop up fallen trees in the special areas that we get permits for from the Forest Service. It is about an eight hour day," related Barajas. •



DIVISION OF



# NELSEN'S TIRE WAREHOUSES

OREGON OWNED AND OPERATED

FALL & WINTER

## 1974 CATALOG

Tires to fit every make and model passenger car and pick-up truck. Available in every style: Radial-Steel Belted-Fiberglass Belted-Polyester-Nylon-70 & 60 Series.

**Northeast  
PORTLAND**  
1530 N.E. Columbia  
285-9803

**Southeast  
PORTLAND**  
1525 S.E. 8th Avenue  
234-0693

**MILWAUKIE/OAK GROVE**  
14115 S.E. McLoughlin Blvd.  
659-8310

**SALEM**  
794 N.W. 7th Street  
581-2229

**CORVALLIS**  
1435 N.W. 9th Street  
753-0123

**EUGENE**  
540 Fillmore  
342-7749

**ROSEBURG**  
1611 N.E. Stephens  
672-4471

**MEDFORD**  
201 Barnett Road  
779-7771

**BEND**  
253 E. Greenwood  
389-4110

**COOS BAY**  
772 So. Broadway  
269-5216

**KLAMATH FALLS**  
316 S. 6th Street  
882-7757

**SPRINGFIELD**  
4157 Main Street  
746-1431

### SPECIAL GROUP PURCHASE DISCOUNT PLAN

NOT AVAILABLE TO THE GENERAL PUBLIC



Save as much as \$20.00 per tire.  
No trade-in needed.

Installation facilities  
available at each  
warehouse location.

Mounting done  
by experienced  
union employees



Budget  
terms  
available.

WE ALSO ACCEPT



WE RECOMMEND YOUR OWN  
CREDIT UNION SERVICE

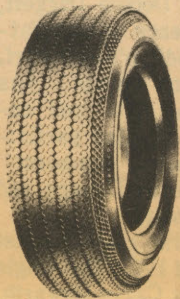
Personalized service to help  
you select the right tire  
for your needs.

Due to the low, low prices, we cannot always identify the manufacturer in writing without losing our Factory Direct Purchasing Power. However, we can list for you the companies who either directly or thru a subsidiary division manufacture our products.

• FIRESTONE • BF GOODRICH • UNIROYAL • ALLIANCE • GILLETTE • SEIBERLING • DAYTON • MONROE SHOCK ABSORBER CO.

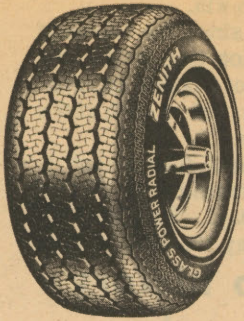
#### FOR COMPACT CARS IMPORTED & DOMESTIC 4 FULL PLY NYLON

SIZE	WAREHOUSE GROUP PRICE		FED. EXCISE TAX
	BLACK	WHITE	
550-12	13.47	14.85	1.35
600-12	15.34	16.72	1.45
520-13	14.78	16.15	1.36
560-13	15.01	16.39	1.45
600-13	16.15	17.53	1.61
A78-13	15.97	17.34	1.83
560-14	15.69	17.07	1.53
560-15	15.37	16.75	1.74
600-15	17.06	18.43	1.82



#### RADIAL POWER GLASS 40,000 MILE GUARANTEE

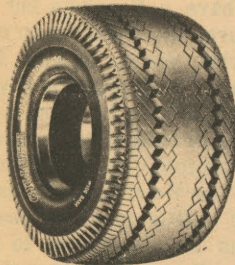
SIZE	WAREHOUSE GROUP PRICE		FED. EXCISE TAX
	BLACK	WHITE	
ER78-14	32.98		2.62
FR78-14	34.38		2.72
GR78-14	35.44		2.96
HR78-14	37.06		3.04
FR78-15	34.51		2.69
GR78-15	36.96		3.04
HR78-15	38.35		3.15
JR78-15	38.65		3.35
LR78-15	39.32		3.58



available Oct. 1, 1974

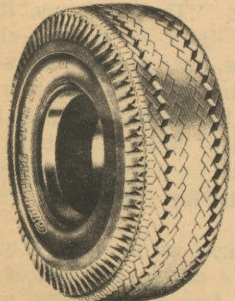
#### WIDE TRAC PICK-UP TIRES

SIZE	PLY	WAREHOUSE GROUP PRICE		FED. EXCISE TAX
		BLACK	WHITE	
678/15	6	29.71		3.26
H78/15	6	31.56		3.54
H78/15	8	33.62		3.74
L78/16	8	41.85		4.13
800/16.5	6	31.12		3.28
800/16.5	8	35.82		3.55
875/16.5	8	40.37		3.95
950/16.5	8	45.84		4.56
1000/16.5	6	43.21		4.34
1000/16.5	8	47.59		4.68
1200/16.5	8	60.86		5.84
1200/16.5	10	71.91		6.26



DUPLEX HIWAY

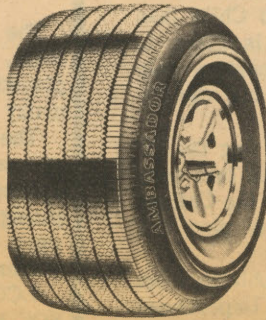
#### GILLETTE COMM. TRUCK NYLON HYWAY



LARGER TRUCK  
TIRE SIZES  
AVAILABLE AT  
WHOLESALE PRICES

SIZE	PLY	WAREHOUSE GROUP PRICE		FED. EXCISE TAX
		BLACK	WHITE	
700/14	6	25.18		2.62
7-17.5	6	34.16		3.29
8-17.5	8	38.81		3.89
670/15	6	23.34		2.36
700/15	6	25.43		2.77
700/15	8	30.15		3.00
650/16	6	25.88		2.52
700/16	6	28.32		2.88
750/16	8	35.05		3.60
750/17	8	38.88		4.12

#### GILLETTE AMBASSADOR 78 SERIES FULL 4-PLY POLYESTER OR 2 + 2 BELTED

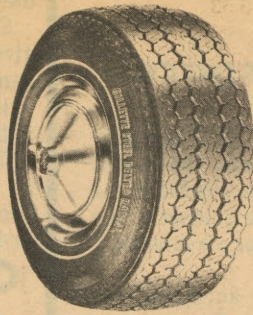


WHITEWALL

SIZE	WAREHOUSE GROUP PRICE		FED. EXCISE TAX
	4-ply polyester	2+2 Belted	
C78-13	19.81	20.80	2.00
D78-14	20.20	21.35	2.25
E78-14	20.56	21.67	2.33
F78-14	21.79	22.90	2.50
G78-14	22.95	23.93	2.67
H78-14	24.23	25.08	2.92
G78-15	23.17	24.26	2.74
H78-15	24.68	25.43	2.97
J78-15	26.21	26.47	3.13
L78-15	26.67	27.81	3.19

#### GILLETTE

#### TWO STAGE DOUBLE STEEL BELTED RADIAL 50,000 MILE GUARANTEE

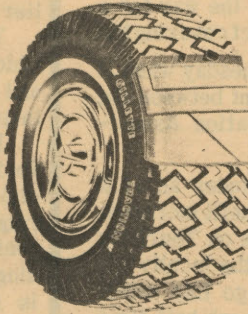


SIZE	WAREHOUSE GROUP PRICE		FED. EXCISE TAX
	BLACK	WHITE	
BR78-13	37.99		2.11
ER78-14	40.92		2.58
FR78-14	44.69		2.81
GR78-14	46.45		2.95
HR78-14	49.75		3.15
GR78-15	47.05		3.05
HR78-15	49.14		3.26
JR78-15	52.96		3.44
LR78-15	55.90		3.60

#### GILLETTE MUD & SNOW 78 SERIES

For studs add \$4.95 per tire.

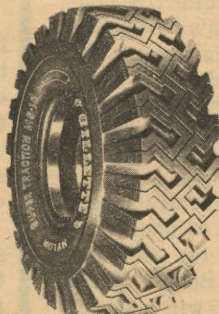
#### 4 PLY POLYESTER 2 + 2 BELTED



WHITEWALL

SIZE	WAREHOUSE GROUP PRICE		FED. EXCISE TAX
	4-ply polyester	2+2 belted	
A78-13	24.22	25.50	1.80
C78-13	25.34	27.30	2.00
C78-14	26.13	28.33	2.17
E78-14	27.56	29.07	2.33
F78-14	28.19	30.20	2.50
G78-14	29.85	31.13	2.67
H78-14	32.43	32.08	2.92
F78-15	28.98	32.02	2.58
G78-15	30.47	32.06	2.74
H78-15	33.35	35.33	2.97
J78-15	34.01	36.07	3.13
L78-15	35.67	37.81	3.19

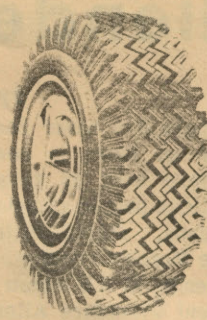
#### GILLETTE COMM. TRUCK NYLON TRACTION



For studs add \$6.95 per tire.

SIZE	PLY	WAREHOUSE GROUP PRICE		FED. EXCISE TAX
		BLACK	WHITE	
700/14	8	26.29		2.91
7-17.5	6	34.01		3.59
8-17.5	8	45.08		4.32
670/15	6	25.09		2.71
700/15	6	27.69		3.11
700/15	8	32.65		3.42
650/16	6	27.25		2.90
700/16	6	30.86		3.32
750/16	8	38.66		4.04
750/17	8	43.73		4.77

For studs add \$4.95 per tire.

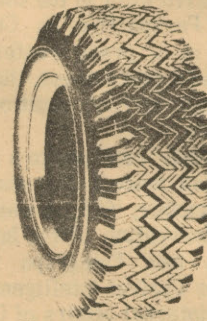


WHITEWALL

#### WIDE 78 MUD & SNOW 4 FULL PLY

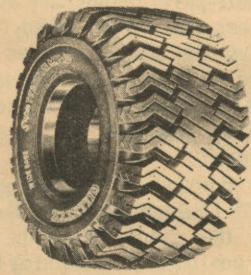
SIZE	WAREHOUSE GROUP PRICE
C78-13	20.79
E78-14	23.34
F78-14	23.88
G78-14	25.63
H78-14	25.72
F78-15	24.31
G78-15	25.48
H78-15	26.26
L78-15	27.50

#### 4 PLY MUD FOR: IMPORTS -



For studs add \$4.95 per tire.

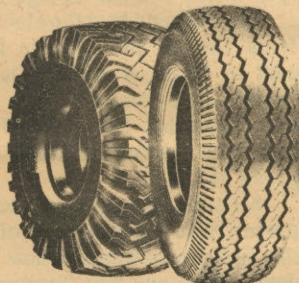
SIZE	WAREHOUSE GROUP PRICE
600-12	17.72
560-13	17.39
600-13	18.53
700-13	19.12
560-15	17.75
600-15	19.43



DUPLEX TRACTION

For studs add \$6.95 per tire.

SIZE	PLY	WAREHOUSE GROUP PRICE
678/15	6	30.00
H78/15	6	33.00
H78/15	8	35.00
L78/16	8	44.00
800/16.5	6	33.00
800/16.5	8	36.00
875/16.5	8	44.00
950/16.5	8	50.00
1000/16.5	6	43.00
1000/16.5	8	54.00
1200/16.5	8	64.00
1200/16.5	10	73.00
1000/15	6	44.00



#### PREMIUM TRUCK RADIAL COMMERCIAL

SIZE	WAREHOUSE GROUP PRICE
700-15	17.90
750-16	20.90
700-15	19.90
750-16	22.90

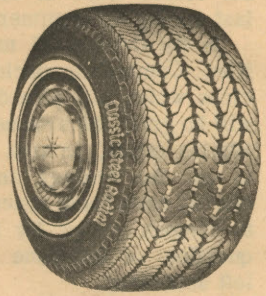
#### COMPACT WINTER



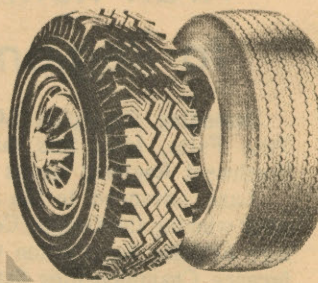
Steel available at slight extra cost - complete size range

SIZE	WAREHOUSE GROUP PRICE
155SR-13	32.50
165SR-13	33.10
175SR-13	37.10
175SR-14	37.40
185SR-14	41.70
155SR-15	36.10
165SR-15	37.00

#### STEEL BELTED 40,000 MILE GUARANTEE



SIZE	WAREHOUSE GROUP PRICE
BR70-13	35.50
ER70-14	40.30
FR70-14	41.00
GR70-14	42.40
HR70-14	45.10
GR70-15	43.60
HR70-15	48.10
JR70-15	49.20
LR70-15	50.30

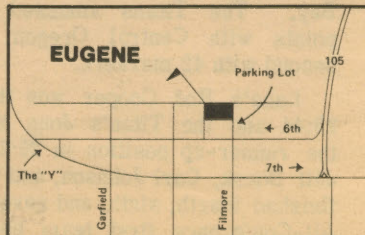


#### PREMIUM - QUALITY PASSENGER CAR

# 114

+ Excise

ANY SIZE BLACK  
WHITE WALL AND  
WINTER TREAD  
For studs add \$4.95



SPRINGFIELD
Main St.
41st



WIDE 78 SERIES  
MUD & SNOW  
FULL PLY NYLON

WAREHOUSE GROUP PRICE	FED. EXCISE TAX
20.79	1.73
23.34	2.22
23.88	2.37
25.63	2.53
25.72	2.75
24.31	2.42
25.48	2.60
26.26	2.80
27.50	3.12

LY MUD & SNOW  
IMPORTS - COMPACTS

WAREHOUSE GROUP PRICE	FED. EXCISE TAX
17.72	1.45
17.39	1.45
18.53	1.61
19.12	1.88
17.75	1.74
19.43	1.82

PLY	WAREHOUSE GROUP PRICE	FED. EXCISE TAX
6	30.54	3.05
6	33.19	3.31
8	35.50	3.57
8	44.07	4.30
6	33.21	3.41
8	36.12	3.65
8	44.95	4.16
8	50.12	4.62
5	43.72	4.62
5	54.13	5.00
5	64.88	6.16
5	73.94	6.39
6	44.35	4.25

PREMIUM  
RUCK RETREADS  
COMMERCIAL HWY RETREAD

WAREHOUSE GROUP PRICE	FED. EXCISE TAX
17.95	.60
20.95	.75

COMMERCIAL TRAC RETREAD

WAREHOUSE GROUP PRICE	FED. EXCISE TAX
19.95	.75
22.95	.95

do not need a casing trade-in

COMPACT IMPORT  
WINTER RADIAL

	WAREHOUSE GROUP PRICE	FED. EXCISE TAX
13	32.53	1.61
13	33.12	1.84
13	37.17	2.01
14	37.44	2.05
14	41.71	2.30
15	36.13	1.72
15	37.08	2.00

studs add \$5.95 per tire.

EL BELTED RADIAL  
0,000 MILE GUARANTEE

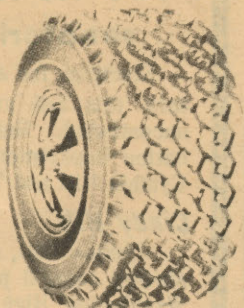
	WAREHOUSE GROUP PRICE	FED. EXCISE TAX
3	35.52	2.69
4	40.31	2.70
4	41.06	2.88
4	42.42	3.06
4	45.10	3.33
5	43.68	3.08
5	48.18	3.33
5	49.27	3.55
5	50.34	3.86

PREMIUM - QUALITY  
ENGER CAR RETREADS

**1145** NO TRADE-IN NEEDED  
+ 50¢ Excise Tax

Y SIZE BLACK WALL  
ITE WALL ADD \$1.00  
TER TREAD ADD \$1.50  
or studs add \$4.95 per tire.

STEEL BELTED  
RADIAL TRACTION



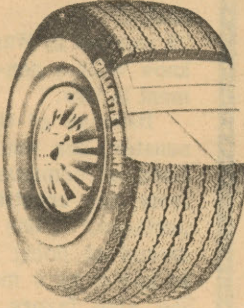
WHITEWALL

SIZE	WAREHOUSE GROUP PRICE	FED. EXCISE TAX
BR78-13	38.99	2.11
ER78-14	41.92	2.58
FR78-14	45.69	2.81
GR78-14	47.45	2.95
HR78-14	50.70	3.15
GR78-15	48.05	3.05
HR78-15	50.14	3.26
JR78-15	53.96	3.44
LR78-15	56.90	3.60

For studs add \$5.95 per tire.

35,000 MILE GUARANTEE

GILLETTE 78 SERIES  
KODIAK STEEL BELTED

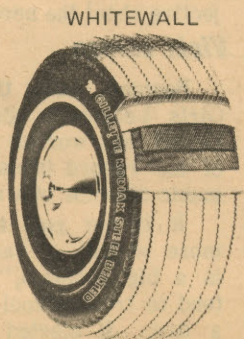


WHITEWALL

SIZE	WAREHOUSE GROUP PRICE	FED. EXCISE TAX
A78-13	25.66	2.04
E78-14	28.73	2.47
F78-14	30.19	2.61
G78-14	31.71	2.79
H78-14	32.96	2.94
J78-14	34.54	3.06
G78-15	32.04	2.86
H78-15	33.04	3.06
J78-15	34.85	3.05
L78-15	36.60	3.20

GILLETTE GOLDEN BEAR  
PREMIUM 78 SERIES

4-PLY - 25,000 MILE GUARANTEE  
2+2 BELTED - 30,000 MILE GUARANTEE

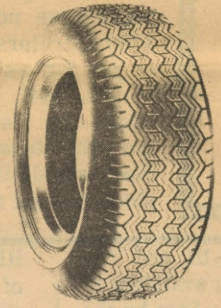


WHITEWALL

SIZE	WAREHOUSE GROUP PRICE		FED. EXCISE TAX
	4-ply polyester	2+2 belted	
A78-13	21.22	22.78	1.80
C78-13	22.91	24.50	2.00
C78-14	22.43	24.25	2.17
E78-14	23.76	25.77	2.33
F78-14	25.29	27.10	2.50
G78-14	26.45	28.43	2.67
H78-14	28.03	29.78	2.92
F78-15	25.38	27.42	2.58
G78-15	26.57	28.86	2.74
H78-15	28.38	30.03	2.97
J78-15	30.21	31.37	3.13
L78-15	30.87	32.91	3.19

FULL 4-PLY POLYESTER  
2+2 BELTED

IMPORTED-COMPACT  
SPORT CAR RADIALS



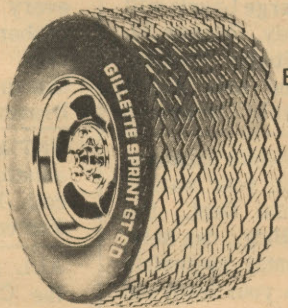
SIZE	WAREHOUSE PRICE GROUP		FED. EXCISE
	BLACK	WHITE	TAX
155SR12	26.15	29.05	1.49
145SR13	26.09	28.77	1.43
155SR13	27.43	29.86	1.61
165SR13	27.94	30.53	1.84
175SR13	30.62	33.59	1.86
165SR14	29.45	32.59	1.92
175SR14	32.72	35.77	2.05
155SR15	30.00	32.86	1.92
165SR15	31.53	34.36	2.00

40,000 MILE GUARANTEE

Steel Belted w/50,000 mile guarantee available at slight extra cost.  
available in complete size range

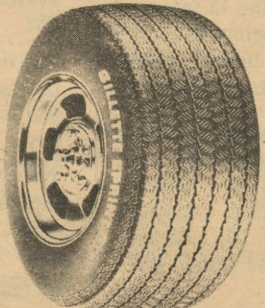
GILLETTE  
SPRINT GT - 60

EXTRA WIDE TRACK SUPER 60  
BELTED RAISED WHITE LETTERS



SIZE	WAREHOUSE GROUP PRICE	FED. EXCISE TAX
A60-13	28.53	2.12
F60-14	33.79	3.01
G60-14	35.70	2.73
H60-14	38.62	3.51
L60-14	40.84	3.33
F60-15	34.46	2.98
G60-15	35.96	2.82
H60-15	38.94	3.64
L60-15	41.19	3.74

GILLETTE SPRINT GT  
WIDE OVAL 70 SERIES BELTED



SIZE	WAREHOUSE GROUP PRICE		FED. EXCISE TAX
	whitewall	raised white letters	
A70-13	—	23.51	1.99
D70-14	25.94	—	2.34
E70-14	26.86	26.86	2.51
F70-14	28.32	28.32	2.63
G70-14	29.00	29.00	2.82
H70-14	31.69	—	3.09
F70-15	28.87	—	2.73
G70-15	30.49	30.49	2.87
H70-15	31.99	31.99	3.11

Your Card...  
Remember your Group Purchase Card  
must be shown at each warehouse to  
qualify for Group Purchase Price.

Safty-Ride SHOCK  
ABSORBERS

Made by the world's largest manuf. of shock absorbers.

Installation Extra	Each	Sets of 4
(A) STANDARD 24 Months—24,000 Miles	3.95	14.95
(B) HEAVY DUTY Lifetime Guarantee	6.60	23.95
(C) EXTRA HEAVY DUTY Lifetime Guarantee	8.20	29.95
(D) LEVEL LIFT SPRING ASSIST Lifetime Guarantee	12.95 each	
(E) ULTRALIFT HEAVY DUTY AIR ADJUSTABLE Lifetime Guarantee	39.90 Per Pair (Incl. Hose Kit)	

BATTERIES

Made by the World's Largest Battery Manufacturer

DYNAPOWER HEAVY DUTY

36-Month Service Guarantee

Sizes fit most 6 & 12 volt US & Foreign Cars

	Exchange Price
22F.....	21.60
24, 24F.....	22.50
27, 27F.....	30.90
42.....	28.50
60, 29NF.....	25.50
19L.....	19.90
1.....	18.40

DYNAPOWER LIFETIME GUARANTEE

	Exchange Price
24, 24F.....	29.90
29N, 60, 74.....	32.90
22F.....	26.90
27, 27F.....	35.90
1 - 6V.....	22.50

IMMEDIATE REPLACEMENT BATTERY GUARANTEE

36 MONTH BATTERIES

If battery is found defective and will not hold a charge:  
(1) FREE replacement within 90 days of purchase.  
(2) After 90 days, we will replace battery, charging a pro-  
rata amount based on the original purchase price and  
the number of months used.

LIFETIME GUARANTEE

If battery fails to hold a charge it will be replaced free of  
charge for life of battery.  
(Applies to original owner and car used in normal passen-  
ger car service only.)  
All batteries must be returned to Nelsen's Tire Warehouse  
for adjustment.

Free Replacement  
TIRE GUARANTEE

- WORKMANSHIP and MATERIAL — If any tire sold by Nelsen Tire fails due to defects in workmanship or material during the first 25% of tread wear, it will be **Replaced Free of Charge**. Failures beyond 25% of tread wear will be replaced on the amount of tread worn off the original tread depth pro-rated on the purchase price (plus F.E.T.)
- ROAD HAZARD  
Any failure that occurs due to normal road hazards will be replaced on the basis of tread wear, pro-rated on the purchase price (plus F.E.T.). These guarantees do not cover tires damaged by willful abuse, fire, collision, or mechanical defects on the vehicle.

Grade, line, level or quality representation relates to private standard of marketer of the tire. No industry standard exists.  
PRICES SUBJECT TO CHANGE WITHOUT NOTICE

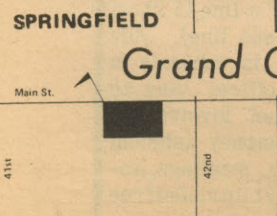
**NELSEN'S  
TIRE WAREHOUSES**  
GROUP PURCHASE WHOLESALE IDENTIFICATION CARD

Affiliation **LANE COMMUNITY COLLEGE**

Signature \_\_\_\_\_

DIVISION OF This card entitles bearer to buy major and private brand tires and related accessory items at warehouse wholesale prices.

No. **912220**



Grand Opening Springfield store Oct.30

Open...  
DAILY 8:00-5:30  
SATURDAYS 8:00-2:00

**NELSEN'S TIRE WAREHOUSES**  
DIVISION OF NELSEN TIRE CORP.





During the past year each of us has come to understand, in a very personal way, what an energy shortage can mean. The majority of people with whom I have talked said they want the kind of planning which will insure enough energy in the future. We don't want to choose between jobs, warm homes and a clean environment. We must be concerned with all of these.

While other cities face threats of brownouts, Eugene is fortunate. However, growth and the depletion of fossil fuel make it mandatory that we continue the search for logical new energy sources in an open-minded, realistic way.

## CAL SCHMIDT for EWEB

SCHMIDT  
FOR EWEB COMMITTEE Sam Huston, Chair-man, P.O. Box 1495, Eugene, Oregon 97401, October 28, 1974

### Two vie for mass comm senatorial position

Elections for ASLCC department senators this fall are, for the most part, uncontested. But in the Mass Communication Department a race is set between Cynthia Hill and Vicky Larsen. •

#### Cindy Hill

Cynthia Hill, a journalism major, was student council president of her Spokane, Washington High School. She has also worked in Washington, D.C. as a secretary to Senator Stevens and says she "has seen how the political process works."

"I worked in Washington long enough to know what a non-representative government is like."

Because of this, as a departmental senator, she would "want to expand the lines of communication and get a vote from her constituents on issues of importance." She sees the TORCH as a means of doing this and "would want to use it as a medium for information." She also favors setting aside an area somewhere to use for student meetings and general communication.

At this point she doesn't know what changes are needed in student government but, being new, feels she "can be objective about the need for change." •

#### Vicki Larson

Besides being the Treasurer of the Girls League in her high school, Vicky Larson has worked in the promotion end of the record industry and as assistant music director of a radio station.

It is her goal to make government more viable. "Lack of communication is a big problem," she says, "I intend to treat school like a job--8 hours a day. If elected I will be available from 9 to 5 at the Mass Communication Department."

"Right now," she continued, "I don't know exactly what changes need to be made but I have no fears about approaching administrators, or teachers, or students."

As far as students forming a union is concerned, Larson commented that she "does not feel she has significant input from the students at this time on the issue. (She) would like to find the reasons that students want a union." •

### TORCH Classified

#### For Sale

FOR SALE: Sofa/Bed. Very comfortable, good condition. \$20. Call 689-2000.

FOR SALE--Sansuie QR5500 Receiver, \$375; Pioneer CS77A Speakers, \$225 pair; Teac A250S Cassett, \$200. All equipment four months old. See at 2259 North 5th, Spngfld.

FOR SALE--G.I. rain gear, G.I. backpacks, waterproof river bags, G.I. sleeping bags, knives, boots, etc. Action Surplus, 4251 Franklin Blvd., Glenwood, 746-1301.

63 FORD, 352 engine, runs. Also mags. Call 747-1577.

FOR SALE--Old SINGER treadle sewing machine for leather work. \$100. Call Jane, Ext. 234.

#### Services

MERCURY BIKE SERVICE Experienced mechanic to work on your beat-up bicycles. Reasonable rates. Pick-up and delivery available. After 6 p.m. call 680-2000.

PARK-A-PET!! Beat the high cost of kennels. 13 year old boy will give TLC to your pets while you're away. Fenced yard, quiet neighborhood. \$1 a day. Call Pat at 688-0115.

#### Wanted

WANTED--Two horse trailers 6 1/2' x 6 1/2'. Call Louise at 746-5176.

VOLUNTEER INSTRUCTORS needed. Gain instruction experience informally. If you have a skill and three hours per week to share with youth call Debbie, Westmoreland Community Center, 687-5316. BE No. 2 on the TORCH. Apply for position of Associate Editor. Learn skills in News Gathering, Editing, dealing with people. Other openings for ad sales, artists, and sports writers. Apply in TORCH office, 2nd floor, Center Bldg.

BOOKS NEEDED: The YMCA needs all kinds of books, postcards maps, or posters. Deliver to the Y, 2055 Patterson, or watch for pick up boxes at LCC. For information call 344-6251.

#### Job Wanted

WILL BABYSIT in my home. One child, weekdays. River Road area. Phone 688-1270.

#### Help Wanted

HOUSE PARENTS needed for small group home for retarded and handicapped individuals. Call 345-8506 days or 345-1639 evenings, weekends. An Equal Opportunity Employer.

BABYSITTER NEEDED--Variable hours afternoons, evenings and weekends. Two children. Will provide transportation to your home. Mary Steiner, 746-3484; or call 686-7001 after 3 p.m.

JOBS ON SHIPS! No experience required. Excellent pay. Worldwide travel. Perfect summer job or career. Send \$3 for information. SEAFAX, Dept. R-3, P. O. Box 2049, Port Angeles Wa 98362.

EARN UP TO \$1,200 a school year hanging posters on campus in spare time. Send name, address, phone and school to: Coordinator of Campus Representatives, P.O. Box 1384, Ann Arbor, Michigan 48106.

#### Lost & Found

LOST--Very special necklace of black mother of pearl beads approximately 1/3 inch in diameter. Please take them to the Administration Building lost and found. Love Laura.

#### Announcements

THE DUO FLAUTO music for the flute--Baroque to modern. Barbara Myrick and Marcy Lohman, artists. Wednesday, October 30, 8 p.m., Choral Room, Performing Arts Bldg. No charge.

THE BAHAPS of Central Lane County will sponsor an informal study class and discussion group. For information call 689-1806 or 689-4751.

EUGENE Gay Peoples Alliance meets every Tuesday at 8 p.m. Business meeting followed by informal discussion. Information: 686-3327.

FEELING BAD? LCC Health Service is open from 8 a.m. to 6 p.m. Monday through Thursday and from 8 a.m. to 5 p.m. on Fridays to fix what ails you. Come in and see us.

FREE LEGAL AID and referral service is available to all LCC students. Stop by the SENATE OFFICES, 2nd Floor Center, 8-5 for more information or an appointment.

AUDITIONS for "Hotel Paradiso" by Georges Feydeau directed by George Lauris will begin Wednesday, October 30, 7:30 p.m., Studio Theatre, 104 Performing Arts Building. Open to all LCC students.

DO YOU find dental expenses to be a pain in your wallet? The LCC Dental Dept., 2nd Floor, Health Bldg., can help. They have dental hygienists who can clean your teeth and help you reduce your dental expenses.

KNIGHTS & Castles Chess Club sets are available in the Library. Playing time is 1-3 daily in the Cafeteria, north end. Beginners welcome. Want to learn? Cyril Tobiasson will teach free.

13th Annual Haunted House Boys & Girls Aid, 35 West 8th, October 27-31. Sunday 2 to 10, Monday through Thursday, 6 to 10. 65 and over, 25¢; 11 and under, 25¢; all others, \$1.

HANDICAPPED Students--Lockers are available for your use in the restaurant lobby area. Information also available on special services for all students in this area. For information contact Steve Hanamura or Gene Sorenson in Counseling Department.

HELP US build a community of the arts. Submit your art, poems, stories, photos, to Concrete Statement, Room 401-E, Center Building by November 20, please.

KLCC, 90.3 fm, THIS WEEK LIGHTS OUT at 8:30 p.m. every week night--Tues. Fibber McGee and Molly; Wed. Jack Benny; Thurs. Inner Sanctum; Fri. Modern Radio Drama; Mon. X Minus One.

UNTIMELY pregnancy? For solutions and understanding, call Birth Right, 687-8651. You've got a friend.

ALL are welcome to attend the Christian Science meetings each Wednesday at 2, Room 109. Health.

DO YOU have parking problems? The North East lot parking lot has lots!! of available space. Don't jam \$\$\$ into the bureaucracy.

LESBIAN Rap group now meets at the Women's Center 2nd & Washington every Friday, 7:30 p.m. Come OUT.

NOTICE: Please do not pet the German Shepard in the cafeteria. His owner depends upon him for balance, and it could cause him to fall.

RATES for Classified advertising are 25¢ a line (5 short words make one line). Ads must be paid in advance in The TORCH office. Any ad which does not involve the exchange of money (student announcements, meetings, notices, etc.) may be printed free as space allows.



# Senator-at-large position attracts eight hopefuls

Next Tuesday, Nov. 5, the LCC student body will go to the polls to elect representatives to the ASLCC Student Government.

The TORCH conducted interviews with all but one of the candidates running for a contested senatorial position, (James Frank, senator-at-large candidate could not be reached for an interview) and their views appear below.

Senators-at-large represent the entire student body and are expected to serve on campus committees. They are also expected to maintain communication with the student body. The student body will elect only one senator-at-large. The candidates are:

## Jon Brenard

Twenty-six year old, Jon Brenard is running for the Senator-at-Large position because he "has a continuing interest in Student Government and student affairs."

A second year student at Lane Jon feels that he knows the students and their needs and knows the administrative bureaucracy. "I see the Senator-at-Large position more as a facilitator than anything else. I'm not a politician but I do think that I have enough feel for the Administration to know how to go about doing something and how to not go about doing something."

"At the top of the list of my priorities is maintaining academic facilities and student services," added Brenard. "I would even like to see Student Government spend some of its money to help the Library out...I also think Student Government should work on ways to increase student input."

"As far as a student union is concerned," he continued, "If there were more student input to the ASLCC there wouldn't be a need for a union. It's my understanding that for all intents and purposes the students are already unionized under Student Government."

## Richard Weber

Richard Weber has been the Senator representing the Math Department for a year now and sees that experience as his biggest asset in his candidacy for Senator-at-Large. "I know what's going on over there more than the other candidates do."

He says that he is not going to make campaign promises or formulate a platform because, "they're always a little phoney. A platform is designed to get you elected and doesn't always relate to what you will do as a senator."

"But," he continued, "I would like to keep people in the Senate, including myself, off of their personal trips a little more... I would like to see the Senate change its attitude from 'just getting the job done' to 'getting the best job done.'"

Asked about students unionizing, Weber said, "By definition the ASLCC is a student union with a representative structure. The way I understand a student union it would mean everyone voting on everything and that just isn't feasible."

"What I've done as a senator is a matter of record," he said in conclusion, "I have no qualms about students checking those records." •

## Ron Wheeler

Ron Wheeler has never been elected to a political position but he has been on LCC's campus six terms now and feels he has "a pretty good feel for LCC. I know a lot of people, and a lot of things. I've been around for quite awhile."

He is seeking the Senator-at-Large position with no real preconceived platform. "I want to be open and responsive to the students. I don't want to talk people into anything, I intend to be in contact with students, taking my direction from them."

He sees the TORCH and various bulletin boards around campus as a way to reach students but really feels "face to face contact is the best way...Of course, I'll probably have to provide most of the initiative."

Wheeler said he wants to be Senator to get involved and see what he can do. "I believe that to really get something done you have to work within the system. Working outside of the system you may be able to make a lot of noise but to really accomplish anything you have to be in the system."

As a final thought Wheeler added, "I don't view myself as a politician, nor a senator. I'm a student helping other students." •

## John Luna

"Next term I'll be transferring to Oregon State University and my main purpose in running for the Senator-at-Large position is to raise some issues--particularly about the legitimacy of Student Government," said candidate John Luna. "If elected my first official act would be to introduce a resolution...that would put a referendum to the student body to abolish the ASLCC, and its political body, the Student Senate. If the senate failed to pass the resolution, which they probably would, I would then resign my position and organize a petition drive to bring the issue to a referendum."

He would do this because, "the Student Government is not a representative democracy. In the departmental structure it could never be."

He concluded, "It is my real hope that if Student Government were abolished it would release the energy and experience of the students at LCC. They would then become involved in creating the struc-

ture to fill the vacuum; that always happens during a revolutionary period."

## Ed Ruiz

Ed Ruiz, running for the Senator-at-Large position now open at LCC, was active in Student Government when he attended Sheldon High School. He has participated in Student Leadership Seminars held at the University of Oregon, and he was involved in training people in the Navy, but he contends his biggest asset is his "desire to serve."

Ed feels the "student body doesn't jive with student government," so he wants to become involved and continue his involvement to "erase the apathy."

He would like to push for more student participation if he's elected, because "LCC is our school for our community."

When asked about his feelings on students unionizing at Lane, Ruiz said, "I never gave it any thought, but if it'd work, I'd be for it." •

## Robert Owens

Robert Owens is a business major who has been in business for himself three times. He is running for the Senator-at-Large position "to help return control of Student Government to the students."

To accomplish this he proposes increased student input in formulating the Student Government's budget. "A Senator from each department should be present with the Budget Committee in order to provide a more realistic budget...The first draft of the budget should be put to the entire Student Body so that they could vote on each individual item. Student Government needs more feedback," he says.

"The thing I'll work hardest for," said Owens summing up his position, "Is getting the students to control the government the way they want it done. I would devote as much time as necessary in order to give the student body the representation they are entitled to." •

## Shirley Short

Although she has had no government experience at LCC, Shirley Short, candidate for Senator-at-Large, suggests that "all students are qualified to run for Senator."

## ROBERTSON'S DRUGS

Your prescription, our main concern....

343-7715

30th & Hilyard

till 2:00

Tuesday & Wednesday 9:00 Exclusive Engagement

Tom & Theresa

Entertainment Nightly

259 East 5th Eugene

THE FEEDMILL RESTAURANT

Imaginative food served in an atmosphere reminiscent of 'Old Eugene

"Recognition is representation," says Shirley, so her chief goal is to increase communication between students and Student Government by introducing "some way for the elected people to be marked," such as a pin or an armband, making the officers easily identifiable.

Transportation problems to LCC could possibly be alleviated through negotiations with Lane Transit District for a plan to lower student fares by increasing the volume of students riding the bus, according to Short. She would also propose an instructor evaluation sheet completed by the students early in the term for the instructor's information. •

\*\*\*\*\*  
Your vote is needed to stand up to the powerful special interests that manipulate our government to their own advantage without regards for the needs of the people.

JOHN STEWART has campaigned vigorously because he believes the needs of the people come before those of private concerns.



Support JOHN and register your concern for OREGON's future.

**John Stewart**  
Democrat for the People  
For State Representative

Paid: Stewart for Representative Committee, P.O.Box 804, Eugene, Oregon 97402, Chris Schroder, Coordinator.

\*\*\*\*\*

LCC BOOKSTORE

we've got what you need...

Special Record Assortment

\$1.98 to \$3.98

3rd floor mezzanine center bldg.