

Apr 30 '81

**'I like dealing
with things
that occupy the
same space
as I do'**

— Mark Fessler

**Feature by Michael Bailey
for The TORCH**

Blazes of color, graceful combinations of slate and rusted steel, and interesting composites of wood and aluminum welcome visitors to the LCC Art Gallery. Paintings by Andy Johnston and sculpture by Mark Fessler are now on display through May 14. This spacious exhibit invites the viewer to wander among the works and share the artists' ideas and personal statements.

Mark Fessler, sculpture assistant in the Art Department, has a long involvement with sculpture. "I feel closer to 3-D work," he says, "and I prefer freestanding art over relief. I like dealing with things that occupy the same space as I do."

Fessler is always on the lookout for ambiguous shapes. One of his favorite haunts is the junkyard. "I'll go down and look around. If a piece catches my eye, I take it home. It may sit around a long time, but eventually I'll build on it." He turns to a sculpture which suggests a human figure, entitled *Tttt*. . . "This one is made from pieces of aluminum, collected over the past year and a half, that I welded together and filled out with wood. The head is part of an inverted boatmotor."

Some of Fessler's pieces challenge common notions of what is "correct." *Once a Perfect Cylinder* is a bronze work cast from chicken skin stitched around a tube. Fessler notes that people give no thought to eating the skin when it encases the bird, but when it's out of place, they find it repulsive.

Other themes in Fessler's work are balance, tension, and implied motion. These are considerations he picked up from contact improvisation, a flowing dance form in

which two or more people share weight, support, center of gravity, and momentum. *Doubt*, a welded steel sculpture of stylized figures, speaks directly from his contact experience. "In contact improvisation," he explains, "there's a point you get to when you are at the brink of losing it, falling, and smashing yourself. There is always some element of doubt: will I fall? Will someone be there? Each dancer needs to trust the others. Overcoming doubt is a critical point in contact."

Three freestanding sculptures belong to a series which deals with equilibrium between materials as well as space. Two of them combine slate and steel, materials not normally used together. In the third, a chain links a slender steel T-bar with a broad metal grating. Masses lean and pull, dependent upon each other to stay upright. Studies in balance, these pieces add grace and scale to the exhibit.

Andy Johnston has gathered 11 of his most recent paintings for this show. Large, colorful canvasses of abstract design, the paintings speak through subtle colors and subjective forms.

He works without preliminary sketches or ideas, preferring to trust his feelings. As he lays down color and shape, adds direction and balance, a mood emerges. His abstract style and freely manipulated figures add to the subjective quality of his work. A painting is finished when it makes an emotional statement and is compositionally complete.

Johnston considers himself a colorist, and color is certainly central to his work. He relates to colors as energy, feeling them and applying them intuitively. He achieves a quality of lightness in his work by veiling vivid colors with transparent layers of white and other light hues.

The undertones push through to produce dream-like or shimmering effects. The combination of colors is subtle, and should be seen several times to feel the full impact.

In contrast, when Johnston uses fields of pure, intense color, the effect is startling. *Becoming* is such a composition. A nude with mere hints of detail faces the viewer, arms outstretched, as if to step out of the canvas. Bright yellow on one side propels her forward, while on the other side, a chalky blue recedes, pulling her back. Read symbolically, *Becoming* might be the emergence of one's female nature from the mysterious unconscious into the brightness of awareness.

Because his paintings are so large, Johnston has some ideas to help the viewer appreciate his work. "Stand about 15 feet away," he suggests, "but feel free to move closer or across the room. Try to feel the painting and read the illusion of space the colors create. Be aware of the mood of the painting, as well as the feelings and responses it raises in you. And don't get hung up on what it means, as there may be no specific meaning." He adds, "By moving in and out, you will see what I saw when I painted it. The distance will help you to read the relationship of the parts, and to feel the mood of the whole."

The sculpture and paintings in the LCC Art Gallery interact well and create rich, visual experience for viewers. With its wealth of color, shape, size, and humor, the exhibit must be browsed through and seen from every angle, in order to be fully appreciated. One will not be disappointed. Gallery hours are 8 a.m. to 10 p.m. Monday through Thursday, and 8 a.m. to 5 p.m. on Friday. For more information, call 747-4501, extension 2409.

Part-time teachers seek equal pay

by Ron Kelley
of The TORCH

Part-time teachers charged, "The LCC administrative bargaining team has not been responsive," and called LCC's final offer, "insulting," in a press conference held on campus Monday.

The mediator for the LCC Part-Time Teacher's Association (PTTA) and the administration requested that negotiations enter Fact Finding to resolve the 10-month old contract dispute.

Fact Finding involves the use of a mutually agreed upon "objective" arbitrator recom-

time teachers to be paid equal benefits as full-time teachers. We are willing to achieve this (parity) over perhaps a three year period."

David Zupan, another PTTA bargaining team member, explains, "Part-time is defined as teaching under 50 percent (of normal contract time). That's the only distinction." The PTTA wants a wage scale equal to what the full-time faculty receives.

Zupan says, "We do the same work. We have the same credentials." He, like many part-timers, taught just one credit hour less than the cut off point for full-time contract eligibility.

benefits. In addition, Garger considers the health insurance package offered by the administration to be inadequate. She says because of the wording, it only impacts a relatively small number of the 137 part-timers belonging to the PTTA.

ADMINISTRATION'S RESPONSE

When contacted later, Hank Douda, the administration's chief negotiator, claimed LCC offered an 11.4 percent package which is much larger than the 5 percent offer mentioned by PTTA representatives.

He says, "I suspect that we are comparing a total package with an escalation of salary levels, when we come up with figures so far apart." He adds, "Their figure may be accurate... but it's hard to say without going over the contract with them."

He doesn't believe it is unusual that negotiations "for a first contract" have taken 10 months, and says the administration has treated the bargaining unit fairly.

He also believes that wages are fair. He says only one college in Oregon pays a higher wage for part-time faculty, and that LCC pays, "as well or better than anyone else."

Douda says he is "paid to keep tabs on all of the impacts on the

which represents the full-time faculty, may provide PTTA needed leverage in future negotiations.

Negotiations for a new contract for the full-time faculty is also underway. If there is a time in the future when both bargaining units are simultaneously without contracts, Zupan says a "no strike" clause preventing mutual strike support will no longer apply.

PTTA members recognize their request for comparable wages for comparable work sets a statewide trend. Thus far, only Rogue Community College has requested equal pay for part-time faculty working the equivalent of 20 percent of a full-time workload.

Results of the Fact Finding phase of negotiations will be available to the public in 30 days.

'It is fair for part-time teachers to be paid equal benefits as full-time teachers.'

mended by the Oregon Employment Relations Board (ERB). If labor and management representatives are unable to agree on a Fact Finder within five days, they draw lots from five names submitted by ERB.

According to spokesperson Judith Garger, the PTTA bargaining unit is confident a Fact Finder will agree that the PTTA has been more than reasonable. She says the unit dropped 30 percent from its original salary proposal, requesting only a 10 percent increase for spring term.

She adds that the administration has raised its long standing figure of 0 percent to only 5 percent, an offer she refers to as insulting. "It doesn't reflect the cost of living," she says.

While the administration has granted full grievance procedures and a health insurance plan, Garger contends the overall package offered does not gain parity between part-time and full-time teachers.

She says, "It is fair for part-

Garger says part-timers are considered "temporary" in the sense that we have no guarantee of being hired every year. Yet we are kept on year after year in this category." She has taught at LCC for 10 years.

Both Garger and Zupan believe the college is increasing its dependency on temporary employees but paying them less. They said, in 1970, wage scales for part-time and full-time were equal. Now, part-timers earn an average of 65 percent of what full-timers earn.

They also claim that up to the current negotiations, part-timers have not had any sick leave, retirement, or health care

**ENTER
DOT
DOTSON'S
COLOR
PHOTO
CONTEST**



Deadline for entries May 15.
Entry blanks are available at:
430 East 11th
1668 Willamette
Valley River Center
826 NW Wall in Bend
and dealers throughout
the Northwest.

**dot
dotson's**
WE COMPLETE THE PICTURE

The TORCH

EDITOR: Heidi Swilling
ASSOCIATE EDITOR: Ron Kelley
ENTERTAINMENT EDITOR: Marty Schwarzbauer
SPORTS EDITOR: Kelly Cheney
PHOTO EDITOR: Lisa Jones
STAFF REPORTERS: Sarah Brown, Mara Math, Chris Abramson
STAFF PHOTOGRAPHERS: Bonnie Nicholas, Phil Armstrong
CALENDAR: Paula Case
ADVERTISING MANAGER: Jan Brown
AD DESIGN: Ruth Schellbach, Mindy Mitchell
RECEPTIONIST: Yolanda Sergi
COPYSETTER: Chris Abramson
PRODUCTION ADVISOR: Lesa Carmean
PRODUCTION MANAGER: Jeff Saint

The TORCH is a student-managed newspaper, published on Thursdays, September through June. News stories are compressed, concise reports, intended to be as fair and balanced as possible. Some may appear with a byline to indicate the reporter responsible.

News features, because of their broader scope, may contain some judgments on the part of the writer. They are identified with a "feature" byline. "Forums" are essays contributed by TORCH readers and are aimed at broad issues facing members of the community. They should be limited to 750 words.

"Letters to the Editor" are intended as short commentaries on stories appearing in The TORCH. The editor reserves the right to edit for libel or length.

"Omnium-Gatherum" serves as a public announcement forum. Activities related to LCC will be given priority.

All correspondence must be typed and signed by the writer. Deadlines are the Tuesday prior to publication. Mail or bring all correspondence to: The TORCH, Room 205 Center Building, 4000 E. 30th Ave. Eugene, Or 97401. Phone 747-4501, ext. 2654.

A good haircut is the basis
of a good hairstyle

**Gibson's Hair
Design**

for Women and Men

77 W. 11th AVENUE
PHONE 344-3081
(across from LCC Downtown Center)

**Lyon's[®]
CLUB ROOM**

We've always got a reason to have a good time.

<p>HAPPY HOUR Video Games FREE Hors d'oeuvres Fresh Popcorn DOUBLES .99 WELL</p>	<p>SUNDAY JOGGER'S NITE HAPPY HOUR 'TIL CLOSING ON ANY ORANGE JUICE DRINK</p>
<p>TACO BAR Every Day 3³⁰-6³⁰pm FREE</p>	<p>MONDAY MEDIC ALERT NITE HAPPY HOUR 'TIL CLOSING FOR ALL MEDICAL PERSONNEL</p>
<p>TUESDAY COME-AS-YOU-ARE NITE HAPPY HOUR 9 p.m. 'til closing</p>	<p>WEDNESDAY (Over the hump!) U of O NITE HAPPY HOUR 'TIL CLOSING FOR ALL STUDENTS & FACULTY (with valid student or faculty card)</p>
<p>THURSDAY L.C.C. NITE HAPPY HOUR 'TIL CLOSING ALL STUDENTS & FACULTY with valid student or faculty card</p>	<p>LARGE SCREEN T.V. SPORTS General Hospital DAILY 2-3 Wine & Dine LUNCH SPECIAL 12-2 p.m. daily .89</p>

Lyon's Restaurant 1933 FRANKLIN BLVD. 484-4333

SAAC attempts to end discrimination

by Paula Case
of The TORCH

As an LCC student have you ever had a grievance and not known where to go to report it?

For students who believe they have been treated unfairly or have experienced discrimination because of color, sex, or disability, the Student Affirmative Action Committee (SAAC) can help.

SAAC, a sub-committee of the Compliance Review Plan, was established in 1979 to determine whether or not LCC works in accordance to the Plan, says advisor Grace Cameron.

General goals of SAAC are:

- To achieve and maintain equal access to the college as a whole and to all classes and programs for qualified students.
- To aid students in acquiring qualifications for classes and programs.
- To actively recruit and retain under-represented populations for all educational classes, programs and activities.
- To ensure that continuous effort is made to eliminate bias and stereotyping that leads to discrimination in educational programs and activities.
- To use information gathered from student and citizen groups to better understand the needs of disadvantaged student populations.

In a recent TORCH letter to the editor, LCC student and committee member Barbara Moses requested input from students who were dissatisfied or felt they had been discriminated against.

She received no response.

"The problem right now is that these policies are available and they aren't being taken advantage of," says Moses emphatically.

Moses believes that students with problems or grievances are unaware that channels are available for resolving them. "Students don't realize they have a right to be heard. Also a lot of people don't want to whine or they don't want to make waves. It's not like high school -- people don't have to take it."

For examples, Moses provides several general complaints voiced by disabled students requiring action: 1) A teacher expresses the desire to not have that student in class; 2) When asked to repeat words for a hearing impaired student, a teacher replies, "I'm talking as loud as I can, catch what you can;" 3) When asked to use high contrast chalk for a visually impaired student, a teacher says, "do the best you

can;" and 4) A teacher assumes physically disabled students are mentally or emotionally disabled as well.

Cameron concurs with Moses. She says many students don't realize a formal complaint procedure exists for students not satisfied with their current situation. When the nature of the complaint involves established requirements for class syllabuses, policies, practices, and regula-

tions, a student may do the following:

- Request exemption from requirements if special circumstances exist beyond that student's control.
- Report treatment in conflict with established requirements.
- Report established requirements that discriminate against a group protected by law.
- Report a lack of needed requirements that discriminate

against a group protected by law.

"Actually nobody on campus is more important than the student," says Cameron. She adds, "I would strongly recommend that if something isn't right the student do something about it." She says students can obtain complaint forms in the Student Activities Office, Room 203, Center Building.

The committee reports its findings to the LCC Board of Educa-

tion on June 10. Members hope to receive student input before then.

Students should deliver written complaints to Grace Cameron in the Student Records Office.

Cameron says students must come forward to effect any change. She says, "Our goals are a little vague. . . we do make an attempt to identify needs (but) we're not smart enough to figure it out by ourselves."

Hay fever season nothing to sneeze at

by Jeanne Neevel
for The TORCH

Spring is a beautiful time of year in Oregon, with many flowering trees and plants in bloom. For many people, however, the beauty of spring is accompanied by the misery of hay fever.

Hay fever, or seasonal allergic rhinitis, is generally brought on by the presence of pollen in the air from trees, grass, and/or weeds, and sometimes mold spores. Pollination cycles vary according to season as well as to geographic location. In the Northwest, trees are a major culprit at this time of year. (For many people, allergic rhinitis is not

seasonal and may result from exposure to house dust, animal hair or feathers.)

In the person who is hypersensitive to the pollen of a specific plant, the pollen, when it is inhaled, acts as an allergen. This allergen indirectly releases the chemical histamine in a person's body. Histamine is primarily responsible for the uncomfortable symptoms which are so familiar to the many hay fever sufferers.

Symptoms do not develop until a person has inhaled enough of the pollen to which s/he is sensitive. Symptoms often include nasal discharge, sneezing, watery eyes, swelling of mucous

membranes, and itching around the eyes, nose, mouth and throat.

The severity of symptoms can vary from day to day and from person to person. In any case, the most effective therapy for hay fever is avoidance of exposure to pollen whenever possible. A move to a different geographic location is not recommended, but one should avoid walks through forest or field during the hay fever season.

On hot, dry and windy days, the pollen count is often high and hay fever sufferers will probably have fewer symptoms if they stay indoors. A closed room with an air conditioner can be a refuge when symptoms become worse. Home air purification systems can be purchased but are expensive, and cost effectiveness benefits are questionable.

Drugs containing antihistamines are available without a prescription, but side effects should be known before the drug is taken.

One common side effect of antihistamines is drowsiness. For many people, however, these over-the-counter medications, when used according to directions, will relieve hay fever symptoms without causing other problems. Individuals with other medical problems should check with their physician before taking antihistamines.

If avoidance of pollen is impossible and medication provides little relief, allergy injections may be beneficial. Injections are used to change a person's sensitivity so that future exposure to allergens will result in a lesser reaction. These injections must be given under direction of a physician. Skin tests can be administered to determine sensitivity to specific allergens.

Radiothon meets goal

by Marty Schwarzbauer
of The TORCH

It happened during the last hour of Howard Leff's "From the Leff-side" broadcast Monday night, just one hour before the conclusion of KLCC's spring fundraising Radiothon: Over \$1,000 in



Photo courtesy of KLCC

telephone pledges from the listening audience sent the seven-day fund raising effort over the \$20,000 mark.

"The volunteers, the staff and everybody thought the whole thing went smoothly," says

Development Director Paula Chan Gallagher, who organized the radiothon. "There is a lot of support" for community radio in Eugene, she confirms.

Listeners pledged over \$3,000 on Sunday alone. Over 500 new pledges came in -- some from as far away as Newport, leading Gallagher to believe the station has succeeded in appealing to a larger audience.

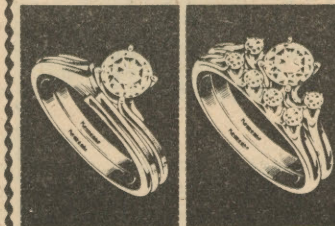
Big dollars came in, too: An anonymous contributor became KLCC's first "Hall of Fame Donor" with a \$1000 pledge. And there were also more pledges of over \$500 than in previous years.

This year's radiothon featured live jazz and classical performances from the broadcast studio, a taped documentary of the Jonestown mass suicide in 1978, as well as KLCC's regular format of recorded jazz and classical music, news and public affairs.

The radiothon began on Monday, April 20, at 7:30 p.m. and reached the final total of \$20,144 the following Monday by 9 p.m.

ROBERTSON'S DRUG
Your prescription is
our main concern.
343-7715
30th & Hilyard

**THERE ARE NO FINER
DIAMOND RINGS**



from \$300 to \$3000

Give the perfect symbol of love...A Keepsake Diamond...guaranteed perfect now and forever.

Keepsake®
Registered Diamond Rings

Fine Jewelry,
Watches, and Gifts
Student Accounts Invited

...something beautiful for everyone.

Don's Jewelers
Keepsake Corner

VALLEY RIVER CENTER

484-1303

Daily 10:00-9 Sat. 10:00-6 Sun. 11:00-6

**Second Nature
Used Bikes**

buy-sell-trade

Specializing in
recycled bicycles,
used wheels
& parts



1712 Willamette
343-5362

German
AUTO SERVICE

**VW
BMW
MERCEDES
DATSUN
AUDI
TOYOTA**

**EXPERT
WORKMANSHIP**

2045 Franklin Blvd.
Eugene, Oregon 97403
342-2912

Need Vitamins?

**20% OFF Reg. Price
EVERYDAY**

On Radiance, Schiff,
Naturally, and all other
Vitamins, Minerals, and Herbs

**NATURAL
VITAMIN SHOPPE**

**945 GARFIELD
(Across From Mr. Steak)**

**OPEN MON-FRI 10-6
SAT 10-5**

Bring this coupon

**APRIL SPECIAL AT
The Turning Point**

Perms \$30

Reg. \$37.50

(Does not include Haircut)

Haircut \$8

Reg. \$10-\$12

Ask for Clair

(Expires April 30th)

343-4813 for Appt.
2660 Oak

SPORTS

Young Titan squad takes four straight

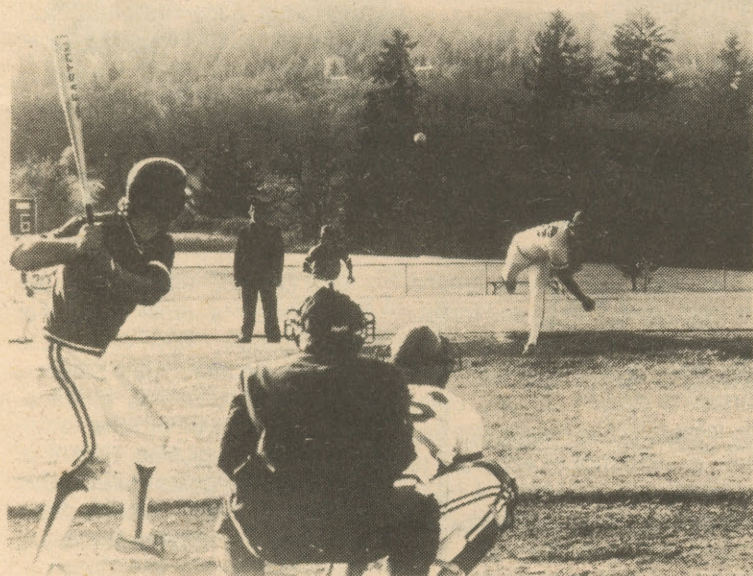


Photo by Jeff Saint

by Kelly Cheney
of The TORCH

The LCC baseball team mesmerized Chemeketa and Blue Mountain, sweeping both squads in double headers and gaining third place in the conference this week.

The Titans are on a four game winning streak, overcoming several losses incurred during the previous week. With eight league games remaining in the season they still have a chance to make the play-offs.

Lane met Chemeketa and proceeded to hand them two losses during a doubleheader Saturday, April 25. LCC's Bruce Hays was the winning pitcher in the first game with six strike outs, helping to bring about the 5 to 3 defeat. Kelly Pfaller, placed on protection draft by the New York Yankees, went 3 for 4 at the plate, batting

in 2 runs and stealing a base.

In the nightcap, Jeff Nokelby tossed a seven-hit shutout, finishing the sweep at 1 to 0. He boasts a .034 earned run average, throwing 54 strikes in 65 pitches Saturday.

The winning run was scored when Steed walked, Don Gimby sacrificed, and Pfaller hit a grounder to second. Steed had left second on a steal to third; when the throw went to first, he rounded third, continued home and met the plate before the ball.

It was three days later when Lane hosted Blue Mountain. The game was 2 to 0 in the bottom of the second when Steed cracked a triple that allowed two teammates to score.

In the fifth inning, BMCC's coach argued with an umpire, asking him to overrule another umpire's call. The coach was ejected from the game, but stayed

to argue. (According to NJCAA rules, an ejected coach must leave the dug-out area.) The coach's presence resulted in a forfeit favoring the Titans.

LCC pitcher Dan Black, credited with the win, executed seven strike outs in five innings.

During the game, Steed went one for two at the plate, knocked in two RBI's, scored a pair and stole one base. Gimby and Keith Winterbottom were both two for three at the plate, and Winterbottom added two RBI's.

The second game of the day went into extra innings with the score tied one each in the bottom of the seventh. In the ninth inning, Lyle Miner singled and advanced to second on a walk by Doug Prialux. Then, Steed made a base hit bringing Miner home.

Pitcher Mark Knowles threw the first eight innings, fanning 11 batters and walking one before retiring. Brad Fleener finished the game, credited with the fourth straight Titan win.

The team stands 9 to 9 in league, and 16 to 10 overall.

"We've had trouble with the bats all year and we're still struggling. Without our quality pitching, we probably wouldn't be winning at all. Our throwing staff has a combined estimated run average of 1.54 during the league and overall, it's even lower. We just aren't getting the crucial hits," explains Coach Bob Foster.

The pitching staff, ranked third in the conference, has only one sophomore. Pitching coach Brian Nott anticipates a well organized club next year, as most players plan to return.

Infield coach Steve Wolf says that, defensively, the squad is adequate. They've made some errors, but then turned around and pulled off a double play.

Mike Perkins leads the team in RBI's, making only five all season--all scored in one game. The team's most consistent hitters are Steed and Gimby, rapping .390 and .300, respectively. Steed claims 10 stolen bases.

The Titan's next game is at Umpqua, Thursday, April 30.

Both Titan track teams dominate

by Kelly Cheney
of The TORCH

The LCC men tracksters "stole the whole shoe" Saturday, April 25, in a triangular meet featuring Clackamas and Mount Hood.

According to coach Harland Yriarte, it was "our sprinters beating their (sprinters) and our distance and field men holding their own," that gave LCC's team the edge.

The win launches them past the rest of the Oregon Community College Athletic Association teams with an undefeated (7-0) record in league dual action.

Stars of the "shoe" were 100 meter runner Nate Moreland, who clocked a fast season best with 10.6, and Ike Freeman, who triple jumped 47/8, winning the event and qualifying him for nationals.

Todd Esselstyne, Moreland, Brad Coleman and Tom Walmsley united in the mile relay clocking a season best 3:19.7.

Both Brad Coleman and Kerry Kopperman were double winners. Coleman won the 200 and 400 meters, darting in at 21.7 and 48.3 respectively. Kopperman's 46/11 shot put and 149/10 discus throw earned him his double honors.

Kevin Morris set a personal record in the 3,000 meter steeplechase claiming second with a time of 9:36.0.

Other personal records were earned en route to Lane's blow out of the opposition. Record setters included Esselstyne in the 400, Mike Yeoman featured in the long jump, and John Nagel in the 5,000 meters. The 400 meter relay squad won a season best.

Mark Temple leaped 13/6 to claim top honors in the pole vault. Kirk Sherburn jumped just a half foot shorter gaining third place recognition.

Conference meets will be held at Bend, May 1-2. The following weekend, regional competition takes place, while Nationals wrap up the season May 21-23.

Lisha Sanders and Anne O'Leary highlighted the women's track and field triangular meet held between Clackamas, Mt. Hood and LCC Saturday, April 25.

Lane escaped with a second place finish as O'Leary set a new personal record of 4:44.8, winning the 1500 meters, missing the school record by two seconds.

Sanders topped her best in the high jump, bounding 5/2 and she placed a third in the 400 intermediate hurdles. Both events are new to her in college level competition.

Lisha Lass participated and placed in the top three in three different events, gaining recognition as the meet's only triple winner. As expected, she nabbed a first in the discus, hurling 148/3. She was awarded a second place in the javelin, throwing 126-even, and, throwing the shot put for the first time in competition this year, Lass obtained a third place with 35/11/2.

Diane Hill, the only other Titan discus thrower, took a second in the event and did the same in the shot with a distance of 36/73/4.

Distance superstar Sandy Dickerson raced away with first place in the 5000 meters, clocking a 17:39.8. Following her to the line was Debbie Knapp in 18:30.9.

Adding more points to the Titan's total were Martha Swatt who placed second in the 1500, LCC's 400 relay team which took a third and the 1600 relay team which took second.

Saturday, May 2, the team will travel to Bend to compete in the state meet which will include all the community colleges in the state. The following weekend, Idaho, Oregon and Montana will send their top six competitors in each event to compete in regionals, and nationals are in Texas the next week, May 21-23.

GRADUATION'S JUST AROUND THE CORNER

JUNE 5
7:30 p.m.
LCC Gymnasium

I
DID IT!



yes, you took all those classes. But you have to apply for your degree, too.

Application Deadline
Friday, May 15th

to be sure your name will appear in the graduation program and that you receive your degree this summer

Apply in Student Records

Campus Ministry

Brown Bag Bible Study
Every Friday 12-1 p.m.
Room 213 Apprentice Bldg.
Study the scriptures with Jim and Norm.

Jim Dieringer
Norm Metzler
We're here for You

6 Hrs Credit

in 3 Great Weeks

MALHEUR
Field Station

4 Summer Sessions

Call Robert Jordan
689-5631
for details and
free brochure

*****ASLCC CANDIDATES*****

The following statements were submitted by ASLCC candidates. A Candidates' Forum will be held Monday, May 4, in the cafeteria. Elections will be held March 6 and 7.

President Vice President



**Mark Ross
Larry Swanson**

As long as there is a need for an administrative body, we the people must actively participate to insure it direction for "our" -- not its -- best interest. In Lincoln's words, that body must be "... of the people, by the people, and for the people." Democracy by definition is a "rule by the ruled," and no democratic government can exist as a separate entity.

I have taken a personal interest in government from a concern that those involved in bureaucratic affairs rarely have experience in the common life. Many of these have little more than theoretical compassion for humanity, yet use the words we long to hear but infrequently see represented in reality.

I have experienced a variety of interpersonal relations since my upbringing in Oregon, foreign travel and roust-a-bouting in the USA. These have strengthened my deep commitment to education and communication for the sharing of awareness to all who make up our environment. This concern has led me to seek experience in an administrative capacity to insure a supporting ear to the interests of the people.

After 12 credit hours SFE for Congressman Jim Weaver, his office was asked, "Would you recommend this student

for future employment?" Their reply, "Yes, Mark is straight-forward with all of the individuals who contacted this office for assistance, he relates well to a wide range of personalities and has a broad base of general knowledge which should be valuable to his future employers."

I have been consistently active in ASLCC, serving as a student representative, as chairman of the legal services committee, and was appointed spring term as student body vice-president.

With the help of my running mate, Larry Swanson, who is currently involved in Women's Studies, shares my humanitarian concepts, has 3 years experience in governmental administration, and 4 years of constituent advocacy work, we can direct ASLCC to use its fullest potential.



**Michael Bernard Thomas
Steve Brumbley**

My reasons for running in this year's election for Student President are as follows:

- 1) Lower LTD bus pass rate and/or a
- 2) Free shuttle bus to 5th and B and downtown Eugene.
- 3) More student awareness in LCC.
- 4) A larger and cheaper day care center.
- 5) More live entertainment in the cafeteria.
- 6) Shorten the gap between administration and students.

In short, I, Michael Bernard Thomas and my Vice-President, Steve Brumbley, have a deep, sincere commitment to making Lane Community College a better place to go to school. A sincere commitment to helping LCC grow into a better educational institution. A vote for Michael B. Thomas and Steve Brumbley is a vote for new energy.



**Ruben Robles
Barbara Kienlen**

Barbara and I are committed to helping you be heard.

I've been asked why I want to be involved in student government. Quite simply the answer is that with the great diversity of people and ideas on this campus (Barbara and I are an example of that diversity) there is only one organ through which these many voices can be combined into a united voice. That united voice can become united action to solve problems.

The necessary ingredient is input from individuals and from groups. The key word is communication. In order to be heard, first you have to speak out; USE your student government, that's why it's here. That's why I'm running, that's why Barbara's running; we believe that's how problems are solved.

We want to continue projects that are already under way, the bike path and the student lounge projects deserve and will get our attention. But we intend to address other issues too. There are problems with textbooks, food services, transportation, day care, and communication; we expect to use every available conduit for input and output of information and ideas and to find a new way of sharing timely information with students.

The creation of an ad hoc committee with representatives from every interested group would be a high priority. This group would work with the student government. Think of all the energy we could combine in such a committee. The athletic groups, the ethnic groups, the women's and the cultural groups would be able to understand each other's problems and begin to address issues that are too big for any one

group to handle and which require broader input in order to resolve. We communicate, we work together, we become a student body.

Our diversity enhances our ability to seek your involvement, to listen to you, and to represent you.



**Jesse Rubenstein
Carole Chauran**

The offices of ASLCC President and Vice-President are demanding ones that need experience, hard work, and dedication to be effective. Rubenstein and Chauran have these qualifications. They are currently ASLCC Senators and their record speaks for itself.

They have fought the tuition increase, the cuts in the various financial assistance programs, and have been responsible for events like Women's Day, among many other acts as your representatives.

If they are elected, they plan to do such things as:

- 1) Work with LTD to find a way to lower the cost of a Fast Pass and to work with them to prevent possible reductions in service to Lane.
- 2) Find a feasible solution to both the shuttle bus and the Franklin Blvd. bike path.
- 3) Work with the TORCH to increase coverage of student government.
- 4) Increase the student awareness of student government through an information booth in the cafeteria, and an expanded student handbook which will provide a guide for students and assist them to services which are available to them.
- 5) Work to gain equal access for students of limited abilities to all college facilities like the library and cafeteria.

These are just a few of the many ideas and plans that they hope to offer if you elect them as ASLCC President and Vice-President.

Attend the candidates forum on May 4

and see what they have to offer. When you do, you'll see why you should vote for the better choice -- Jesse Rubenstein and Carole Chauran for your ASLCC President and Vice-President.



**Rod Dove
Tom Granader**

The students of LCC are wondering what ASLCC is all about. Many feel that it doesn't matter who they vote for. Let's face it, most students are not planning on voting. Those are the votes we want. Student activities can be more mature and longterm in outlook. We can begin to work for a student center, we can start an infant care center.

I don't think we can lower bus fares or food prices without effective boycotts, perhaps not even then. Change is not easy to bring about, ask David Anderson, ask the people who have been trying to legalize marijuana for ten years!

Turning to cultural events; South Eugene recently had John Lilly speak, when last did LCC have a speaker of that calibre? We should explore the possibilities of bringing some major talent here -- if we have to go in with another local school or business to do it. I like the music Jim Pilon brought into the cafeteria this year and would like to see it continue.

VOTE

Treasurer



Aaron Gibbens

Aaron Gibbens, a candidate for Associated Student Treasurer, is a new factor in the governmental race. With new ideas and fresh energy, I will attempt to lead the budget committees to new levels of economy and fairness in distribution of funds and costs. The state says that tuition is going to rise. I may not be able to stop it, but I won't sit quiet while it happens. With good budgeting and strong economizing, I will try to maintain the current prices and conditions, or improve them. The students deserve a break.

Lane County is experiencing its own budget problems. This is no secret. By reading either the TORCH or the Register Guard, we can see major cuts -- the sheriff and other programs on the county level. These cuts are also surfacing in Lane Transit District. I have heard that rate increases and service cuts are due this summer. This has not been confirmed, but it cannot have a chance to happen. Enrollment could be impaired by lack of transportation to the campus. We cannot sit still for this. With 10 to 15 thousand people involved on campus, we cannot be ignored. It is for this reason that talks are being started with the LTD board about increasing the number of buses to the campus and possible student discounts on Fast Pass.

The final word in this race comes down to economics and leadership. We, the students of Lane Community College, need strong new leadership to fight for better economics on our campus. Vote into office the man with the ideas and the potential. Vote into office Aaron Gibbens as your student body treasurer.



David Anderson

The office of ASLCC Treasurer demands a commitment of time and energy. I am eager to give that commitment. During my term in office as ASLCC President, I became involved in many projects which I would like to help see through to completion. My experience in accounting in the private sector has provided the skills to perform tasks of ASLCC Treasurer. I would bring to this office the working understanding and awareness of procedures and policies of ASLCC and the College.

Senator

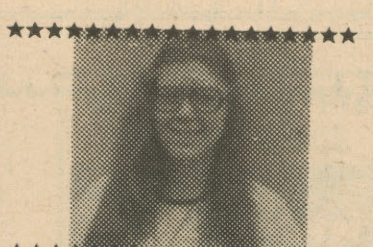


Connie Nelves

I was born in Taiwan and am now an American citizen. I have been living in Eugene for the past two years. I have made many friends in this area, but I have also experienced many frustrations trying to become an integral member of the community. I know that other cultural minorities are confronted with similar problems.

Cultural minorities enrich community life in the Eugene-Springfield area. Yet many barriers exist which impede communication between cultural minorities and the community. It is time that we try to remove some of these barriers. I would like to help initiate more cooperation between minority groups and Caucasian students at Lane Community College because I believe that each cultural group can make important contributions to the learning process.

Student government at Lane Community College offers a unique opportunity not only to promote student involvement in the operation of the college but also to bring different cultural groups together. Currently, minority representation in ASLCC does not reflect the student population at the college. My election as a senator to ASLCC would help redress this imbalance. I urge you to support my candidacy and vote for me on May 6 and 7.



Terry Burnette

My name is Terry Burnette, and I am a write-in candidate for ASLCC Senator. If elected I will work to prevent any cuts in LTD's service to our campus, and also to make all campus facilities, like the library and cafeteria, available to students with limited abilities. I pledge to work in the Senate to bring active communication to the students about the issues the students will be facing in the coming year. I will work for the highest educational standards for the students of this college.

Douglas Ladd

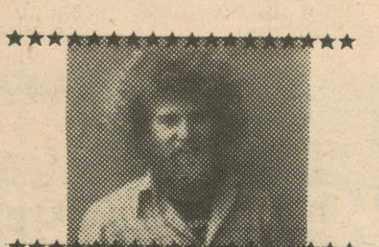
I feel I can help to make changes that will benefit all students. I have been Vice President of the Voice of the Limited Abilities Association for two years and I have been a Student Service Associate for two years.

As a member of the VLAA I helped to get the lower elevator buttons and the electric doors for disabled students.

As a member of the Student Service Associates, I have talked to many students that feel there needs to be changes I feel I can help with.

I hope to participate in making next year very progressive for LCC students.

Cultural Director



Jim Conant

Jim most recently appeared in LCC's production of "Twelfth Night" as Feste the clown. He is eager to perform the job of Cultural Director and determines his suitability to the position to be based in the fact that he has been a part of the Eugene artistic community for over five years, working as an actor both here at Lane, at the U of O, and at the Oregon Repertory Theatre. He has played well over twenty roles, including Alan in "Equus," George in "Our Town," and Slim in "Cowboy Mouth." He has also played on and off as a rock 'n' roll musician during that time.

He has lived in Eugene for fifteen years, and feels that his reputation and connections within the community as an artist render him an ideal candidate for the position of Cultural Director.

Protect
your right
to bitch!
Vote
May 6
and 7

REVIEWS

Music



Echo and the Bunnymen Crocodiles

The subjective experience (of LSD) is what is often referred to as psychedelic or mind expanding. The senses are jangled and bombarded with a crossover, called synesthesia, occurring: Music may be seen and color heard; one kind of sensation is converted into another. Depth perception is altered, colors vibrate in their beauty and intensity, objects and patterns become three dimensional and alive. . . . From *Recreational Drugs*, Young/Kline/Beyer.

Allegedly there is an LSD revival in England these days. Along with the recent trend in choice of intoxicants comes a new trend in music. It seems the ska revival is over; the punks have switched dope(s).

Echo and the Bunnymen are riding at the top of the heap as artists for this new wave of psychedelic sound. They certainly seem to be in some state of vegetation on the neon colored album cover. An alternate title was considered but discarded -- *Utter confusion in the Tie-Dyed Wood*. (Wood is a colloquial term for more than one tree in Britland.)

But what is *acid music* anyway?

In a survey taken recently,

many people responded with *Sgt. Pepper's*, by The Beatles; *Crown of Creation*, by Jefferson Airplane; *In Search of the Lost Chord*, by The Moody Blues.

But the stuff that *Echo and the Bunnymen* are creating doesn't sound a whole lot like the weird space images and time tripping that came out of San Francisco over a decade ago. Even if you played this with headphones you probably wouldn't see buildings melt, or paint peel off the walls

and crawl away. It's just not made for that type of thing.

The four way lineup utilizes the standard two guitars, bass, drums. The lead singing, or wailing, as it were, contains a certain ring of Jim Morrison, but also resembles John Lydon (Johnny Rotten). Moaning with stubborn energy, they make every line seem as if it will be their last. They'd rather be someplace else, which no doubt gets rather frustrating after awhile. *I've been in a daze for days/*

there's people rolling around on the carpet/ biting wool and pulling strings/ now you spit out the sky because its empty and hollow and all your dreams are hanging out to dry/ once i like crying twice i like laughter/ come on tell me what i'm after.

Actually, this music does sound pretty strange. So it is probably drug induced, or at least drug related. But to pinpoint exactly which tune is related to which particular drug is like trying to guess the seven different herbs and spices in Colonel

Sander's Southern Fried chicken. Yech -- who cares?

There's a definite aroma of safety pins and razor blade mentality intertwined in this style of brooding. Unlike tales of space utopias and other never-never lands, these guys seem to think there's no escape from this hell-on-earth (barring death, of course), and that the best way to get through this mess is to do lots of drugs, drink plenty of liquids and most importantly, *get lots of rest.* By Jeff Saint

ROCK PROFILES the BOSWORTH BROTHERS BAND

"We try to orient our rhythms for dancing, but keep our melodies and lyrics geared for the intellect," says Brent Bosworth, rhythm guitarist for the Bosworth Brothers Band.

Brent and brothers Curt (lead guitar) and Allen (drums), together with bassist Jeff Rogers formed the band just two years ago. Their popularity and individual sound earns them a reputation as one of the most consistent, hard working bands in the area. The Place (in downtown Eugene) featured them for Monday Night Madness dozens of times.

In 1968 Brent, Curt and Jeff began as *Domino Theory Spook*--a "psychedelic rock band that played all originals," Brent says.

Then, beginning in 1972, they toured Southern Oregon and Northern California in a seven-piece funk rock format,

Wisdom Star. Originally from the Medford area, the band relocated in Eugene in 1976. *Wisdom Star* split up a year later, after limited success.

After a two-year break, Brent, Curt and Jeff reunited when Allen, the youngest Bosworth brother, became old enough to work in clubs.

Rehearsals began in early 1979, and six months later, under the direction of manager Marcelo Cruz, the *Bosworth Brothers Band* made it's first

songs which highlight his fiery lead guitar. Guitarists Jeff Beck, Lowell George, Frank Zappa and Jimi Hendrix influence this fine style.

Borrowing from jazz/funk rhythms and chordings, Brent's guitar technique defies description. He blends all this into some of the finest rock rhythms around.

Allen's drumming and Jeff's bass playing provide a solid but high energy dance beat. The three lead singers (Brent,



Oregon appearances.

Two-thirds of the band's material is original. While Brent continues as the main songwriter, Curt now contributes many of his own

Curt and Jeff) deliver passionate, well arranged vocals.

The Bosworth Brothers Band sings "everything from love songs to social reform songs," according to Brent.

Their cover material includes such sources as Commodores, Zappa, Litte Feat, Talking Heads, and Beatles. "We go for a loud but clean sound," he says, "and try to incorporate rhythms and styles from all over the world . . . into our own format."

"We try to avoid 'cloning,' but we do borrow from trends. . . ." However, he adds, "Instead of following trends, we would like to set them."

The band plans to record an album soon for release either through an established record label, or their own.

The *Bosworth Brothers Band* perform at the Place Thursday through Saturday, April 30 to May 2. Future plans include engagements in some of Portland's top clubs, and performances in Southern Oregon and California.

For booking and calendar information, contact Manager Marcelo Cruz at 342-7993. By Marty Schwarzbauer

next week:
the Gaye Lee Russel Band

The Curious Savage

A Comedy by John Patrick

May 15, 16, 19, 20, 22, 23

With this uniquely funny and touching play, we inaugurate The Blue Door, a 125-seat theatre on the lower level of the Performing Arts Building. Plan to join us for this happy event!

General admission tickets at \$4 may be purchased in advance. Call 726-2202

FOR MOTHER'S DAY:

BEAUTIFUL BLOOMING PLANTS,
FRESH CUT FLOWERS,
UNUSUAL IMPORTS.

FOR THAT SPECIAL
MOM. REMEMBER
RAINYDAY CACTUS



AROUND TOWN

Thursday

Movies

Cinema 7 -- Atrium Building, *Return of the Secaucus 7*, 7:30 and 9:40.

Mayflower -- 788 E. 11th, *Excalibur*, 7:20 and 9:30.

National -- 969 Willamette St., *Nine to Five*, 7 and 9:15.

McDonald -- 1010 Willamette St., *Alice In Wonderland*, and *Amy* 7:30 and 9:20.

Fine Arts Theatre -- 630 Main St., *Seems Like Old Times* and *Fooling Around*, 7:30 and 10.

Cinema World -- Valley River Center, *Tess*, 6 and 8:55., *Every Which But Loose* and *Any Which Way You Can*, 5:45, 7:50 and 9:50. *Altered States* and *Night Hawks* 6, 7:45 and 10 p.m. *Harry's War* and *Raging Bull*, 6:20, 8:10 and 10:05 p.m.

Valley River Twin Cinema -- *Tribute* 7:15 and 9:30., *Le Cage aux Folles II* 7 and 9 p.m.

Bijou -- 492 E. 13th, *Citizen Kane* and *Blow Up*, 7:30 and 9:30 respectively.

Music

BJ Kelly's -- 1475 Franklin Blvd., *Sneakers*, 9:30 p.m. - 2 a.m., cover varies.

The Place -- 160 S. Park, *Bosworth Brothers*, 9:30 - 1:30.

Treehouse -- 1769 Franklin Blvd, *Linda Jacobs and Margaret Vitus* 9 - midnight.

Tavern on the Green -- *Gaye Lee Russel Band*, 9 - 2 a.m., cover varies.

Aunt Lucy Divine's -- 13th and Alder, *Gary Parks*, 9:30 p.m. - 2 a.m.

Perry's -- 959 Pearl St., *Dick Blake*, 9 p.m. - 1 a.m., cover varies.

Duffy's -- 801 E. 13th Ave., *Stoddard and Cole*, 9 p.m. - 1 a.m.

O'Callahan's -- 440 Coburg Rd. *Noiz Boiz*, 9 p.m. - 2 a.m. Cover varies.

Black Forest -- 2657 Willamette, *Salt and Pepper*, 9:30 p.m. - 1 a.m. Cover varies.

U of O -- *The Sandy High School Band*, will perform a concert at 12:30 p.m. Room 198 Music. Also *Cellist James Relley* will perform his doctoral recital, 8 p.m. at Beall Hall.

Theatre

U of O -- Robinson Theatre, *Buried Child*, 8 p.m. Admission is \$4.50 for general public, \$2.75 for U. of O students and senior citizens and \$3.50 for other students.

Friday

Movies

Cinema 7 -- *Every Man For Himself*, 7:30 and 9:40.

National -- *Nine to Five*, 6, 8 and 10 p.m.

Mayflower -- *Excalibur*, 7:20 and 9:30.

McDonald -- *Alice In Wonderland*, and *Amy*, 7:30 and 9:30.

Fine Arts Theatre -- *Seems Like Old Times* and *Fooling Around*, 7:30 and 10.

Cinema World -- *Tess* 6:20, 8:10 and 10:05, *Night Hawk*, and *Altered States*, 6, 7:45 and 10 p.m., *Every Which Way But Loose*, and *Any Which Way You Can* 5:45, 7:50 and 9:50 p.m. *Harry's War* and *Raging Bull*, 6:15, 7:50 and 10:05.

Valley River Twin Cinema -- *Tribute*, 7:15 and 9:30, *Le Cage aux Folles II*, 7 and 9 p.m.

Bijou -- *Citizen Kane* and *Blow Up*, 7:30 and 9:30 respectively.

Music

BJ Kelly's -- *Sneakers* -- rock n' roll, 9:30 - 1:30.

Treehouse -- *Linda Jacobs and Margaret Vitus*, 9 p.m. - 1 a.m.

Tavern on the Green -- *Gaye Lee Russel Band*, 9 p.m. - 1 a.m.

Perry's -- *Dick Blake* Trio, 9 p.m. - 1 a.m.

Aunt Lucy Divine's -- *Hillbilly Women*, 8 p.m., Admission is \$2.50 in advance, \$3 at the door.

Black Forest -- *Salt and Pepper*, 9:30 p.m. - 1 a.m. Cover varies.

University of Oregon -- Beall Hall, *Final performance of the 1980-81 Chamber Music Series*. Guest will be *Tashi*. 8 p.m. Admission is \$3, \$4, and \$5.

Community Center for Performing Arts -- 291 W. 8th., *Reilly and Maloney and evening of urban rock*, 8 p.m. Admission is \$3 in advance and \$3.50 day of show.

Theatre

U of O -- Robinson Theatre, *Buried Child*,

8 p.m., \$4.50 general admission, \$3.50 students, \$2.50 U of O students and seniors.

Sheldon's Little Theatre -- 2455 Wilakenzie Rd. *The Effect of Gamma Rays on Man-On-The-Moon-Marigolds*, by Paul Zindel. 8 p.m. Admission is \$2.

Dance

U of O -- M. Frances Dougherty Theatre in Gerlinger Annex, *Daniel Nagrin will hold a exhibition and a question and answer session for intermediate to advanced modern dancers*. 2:30 p.m. Admission is \$3.50.

Saturday

Movies

Cinema 7 -- *Every Man For Himself* 7, 7:30 and 9:40.

Mayflower -- *Excalibur*, 7:20 and 9:30.

National -- *Nine to Five*, 6, 8, and 10 p.m.

McDonald -- *Alice In Wonderland*, and *Amy* 7:30 and 9:30.

Fine Arts -- *Seems Like Old Times* and *Fooling Around*, 7:30 and 10.

Valley River Twin Cinema -- *Tribute* 7:15 and 9:30, *Le Cage aux Folles* 7 and 9 p.m.

Cinema World -- *Harry's War*, and *Raging Bull*, 7:20, 8:10 and 10:05, *Every Which Way But Loose*, and *Any Which Way You Can* 5:45, 7:50 and 9:50, *Tess*, 5:45, 7:40 and 8:45, *Altered States*, and *Night Hawk*, 6, 7:45 and 10.

Bijou -- *Citizen Kane* and *Blow Up*, 7:30 and 9:30.

Music

BJ Kelly's -- *Sneakers*, 8:30 - 2 a.m.

The Place -- *Bosworth Brothers*, 9:30 p.m. - 1:30 a.m.

Treehouse -- *Linda Jacobs and Margaret Vitus* 8 p.m. to midnight.

Tavern on the Green -- *Gaye Lee Russel Band*, 9:30 - 1:30 a.m.

Aunt Lucy Divine's -- *Hillbilly Women*, 8 p.m., \$2.50 in advance, \$3 day of show.

Duffy's -- *Stoddard and Cole*, 9 p.m. - 1 a.m. Cover Varies.

Black Forest -- *Salt and Pepper*, 9:30 p.m. - 1 a.m. Cover varies.

University of Oregon -- Beall Hall, *Tashi, a clarinet string ensemble* will present a lecture recital, 8 p.m., \$1.50.

Saturday Market -- 8th and Oak, *Sky's the Limit*, high energy swing. 12 noon. Free of Charge.

Eugene Fine Arts Committee -- United Lutheran Church, 2230 Washington St., *Elfreda Gleam*, violin; *George Skipworth*, piano; assisted by *Jon Saboe*, percussion. \$4.50 general public, \$4 for students and senior citizens.

Theatre

Sheldon's Little Theatre -- 2455 Wilakenzie Rd., *The Effect of Gamma Rays on Man-On-The-Moon-Marigolds* by Paul Zindel. 8 p.m. Admission is \$2.

U of O -- Robinson Theatre, *Buried Child*, 8 p.m., \$4.50 for general public, \$2.75 for U of O students and senior citizens, and \$3.50 for other students.

Sunday

Movies

Cinema 7 -- *Every Man For Himself*, 7:30 and 9:40 p.m.

McDonald Theatre -- *Alice In Wonderland* and *Amy*, 2:15, 4:40, 7 and 9:20.

Mayflower -- *Excalibur*, 2:45, 5, 7:15 and 9:30.

National -- *Nine to Five*, 1:30, 3:30, 5:30, 7:30 and 9:30.

Fine Arts Theatre -- *Seems Like Old Times* and *Fooling Around* 7:30 and 10:00.

Cinema World -- *Harry's War*, and *Raging Bull*, 6:20, 8:10 and 10:05, *Tess*, 7:40 and 9:35, *Night Hawk*, and, *Altered States*, 6, 7:45 and 10 *Every Which Way But Loose*, and *Any Which Way You Can*, 5:45, 9:50 and 10:05.

Valley River Twin Cinema -- *Tribute* 7:15 and 9:30 *Le Cage aux Folles*, 6:15 and 8:30.

Bijou -- *Citizen Kane* and *Blow Up*, 3 and 4:45.

Music

The Place -- *Sunday Showcase*, 9 p.m. - 1 a.m., cover varies.

Music

The Place -- *Sunday Showcase*, 9 p.m. - 1 a.m., cover varies.

Treehouse -- *David Case* - classical guitar, 9 a.m. - 12 p.m.

Aunt Lucy Devine's -- *Folk Music*, 9 - 11 p.m. Cover varies.

The Place -- *Robert Cray*, 9 - midnight, Cover varies

Dance

U of O -- Beall Hall, *Daniel Nagrin will perform his internationally known acclaimed solo concert*. 7:30 p.m., \$3.

Theatre

Oregon Repertory Theatre -- Atrium Building, *Red, Hot and Cole*, final dress rehearsal performance., 8 p.m., Admission is \$3.50.

Monday

Movies

Cinema 7 -- *Every Man For Himself*, 7:30 and 9:40.

Mayflower -- *Excalibur*, 7:20 and 9:30.

National -- *Nine to Five*, 7 and 9:15.

Fine Arts Theatre -- *Springfield. Seems Like Old Times* and *Fooling Around*, 7:30 and 10.

Cinema World -- *Harry's War* and *Raging Bull*, 6:20 8:10 and 10:05, *Tess* 5:45, 7:40 and 8:45, *Night Hawk* and *Altered States* 6, 7:45 and 10, *Every Which Way But Loose*, and *Any Which Way You Can*, 5:45, 7:50 and 9:50 p.m.

Valley River Twin Cinema -- *Tribute* - 7:15 and 9:30, *Le Cage aux Folles*, 7 and 9 p.m.

McDonald -- *The Alice In Wonderland* and *Amy*, 7:30 and 9:30.

Bijou -- *Citizen Kane* and *Blow Up*, 7:30 and 9:15.

Music

The Place -- *Bosworth Brothers*, 9:30 p.m. - 2 a.m.

Black Forest -- *Salt and Pepper*, 9:30 p.m. - 1 a.m.

BJ Kelly's -- *Sneakers* 9 p.m. - 2 a.m.

Perry's -- *Dick Blake*, 9 p.m. - 1 a.m. Cover varies.

Theatre

Oregon Repertory Theatre -- *Red, Hot and Cole*., preview, 8-p.m. Admission is \$4.

Theatre

Oregon Repertory Theatre -- *Red, Hot and Cole*., preview, 8-p.m. Admission is \$4.

Tuesday

Movies

Cinema 7 -- *Every Man for Himself*, 7:30 and 9:40.

Mayflower -- *Excalibur*, 7:20 and 9:30.

National -- *Nine to Five*, 7 and 9:15.

Fine Arts Theatre -- *Seems Like Old Times* and *Fooling Around*, 7:30 and 10.

Valley River Twin Cinema -- *Tribute* 7:15 and 9:35, *Le Cage Aux Folles II*, 7 and 9.

Cinema World -- *Harry's War* and *Raging Bull*, 6:20, 8:10 and 10:05, *Altered States* and *Night Hawk* 6, 7:45 and 10., *Tess* 5:45, 7:40 and 8:45, *Every Which Way But Loose*, and *Any Which Way You Can* 5:45, 7:50 and 9:50.

Bijou -- *Citizen Kane* and *Blow Up*, 7:30 and 9:30.

Music

Aunt Lucy Divine's -- *Folk Music*., 9 p.m. - 11 p.m.

Perry's -- *Dick Blake* - Guitar, 9 p.m. - 1 a.m.

Treehouse -- *Linda Jacobs and Margaret Vitus*, 9 p.m. - 1 a.m. No cover.

U of O -- *John Holland* will incorporate a lecture into his organ doctoral degree recital., 8 p.m. at Beall Hall. Admission is free.

Theatre

Oregon Repertory Theatre -- *Red, Hot and Cole*., 8 p.m., preview, admission is \$4.

Wednesday

Movies

Cinema 7 -- *Every Man For Himself*, 7:30 and 9:40 p.m.

National -- *Nine to Five*, 7 and 9:20 p.m.

Mayflower -- *Excalibur*, 7:30 and 9:25 p.m.

McDonald -- *Alice In Wonderland*, and *Amy*, 7:30 and 9:30 p.m.

Fine Arts Theatre -- *Seems Like Old Times* and *Fooling Around*, 7:30 and 10 p.m.

Cinema World -- *Harry's War*, and *Raging Bull*, 6:20, 8:10 and 10:05 p.m., *Tess*, 5:45, 7:40 and 8:45, *Every Which Way But Loose*, and *Any Which Way You Can* 5:45, 7:50 and 9:50, *Night Hawk*, and *Altered States* 6, 7:45 and 10 p.m.

Valley River Twin Cinema -- *Tribute*, 7:15 and 9:30 p.m., *Le Cage Aux Folles II* 7:00 and 9 p.m.

Bijou -- *Citizen Kane* and *Blow Up*, 7:30 and 9:30

Music

Aunt Lucy Devine's -- *Folk Music*, 9 to 11 p.m.

Lost Dutchman -- *D. Lee Bruce*, 9 to 1 a.m.

University of Oregon -- *The Symphony Concerto* will present a student soloist concert., 8 p.m., Beall Hall. Free of charge.

Music

Aunt Lucy Devine's -- *Folk Music*, 9 to 11 p.m.

Lost Dutchman -- *D. Lee Bruce*, 9 to 1 a.m.

University of Oregon -- *The Symphony Concerto* will present a student soloist concert., 8 p.m., Beall Hall. Free of charge.

Theatre

Oregon Repertory Theatre -- *Red, Hot and Cole*. Gala opening at 8 p.m., Admission is \$6.

Music

Aunt Lucy Devine's -- *Folk Music*, 9 to 11 p.m.

Lost Dutchman -- *D. Lee Bruce*, 9 to 1 a.m.

University of Oregon -- *The Symphony Concerto* will present a student soloist concert., 8 p.m., Beall Hall. Free of charge.

University of Oregon Museum -- *Edward Stanton Mixed Media*, Through April,

University of Oregon Museum -- *Edward Stanton Mixed Media*, Through April,

University of Oregon Museum -- *Edward Stanton Mixed Media*, Through April,

University of Oregon Museum -- *Edward Stanton Mixed Media*, Through April,

University of Oregon Museum -- *Edward Stanton Mixed Media*, Through April,

University of Oregon Museum -- *Edward Stanton Mixed Media*, Through April,

University of Oregon Museum -- *Edward Stanton Mixed Media*, Through April,

University of Oregon Museum -- *Edward Stanton Mixed Media*, Through April,

University of Oregon Museum -- *Edward Stanton Mixed Media*, Through April,

University of Oregon Museum -- *Edward Stanton Mixed Media*, Through April,

University of Oregon Museum -- *Edward Stanton Mixed Media*, Through April,

University of Oregon Museum -- *Edward Stanton Mixed Media*, Through April,

University of Oregon Museum -- *Edward Stanton Mixed Media*, Through April,

University of Oregon Museum -- *Edward Stanton Mixed Media*, Through April,

University of Oregon Museum -- *Edward Stanton Mixed Media*, Through April,

University of Oregon Museum -- *Edward Stanton Mixed Media*, Through April,

University of Oregon Museum -- *Edward Stanton Mixed Media*, Through April,

University of Oregon Museum -- *Edward Stanton Mixed Media*, Through April,

University of Oregon Museum -- *Edward Stanton Mixed Media*, Through April,

University of Oregon Museum -- *Edward Stanton Mixed Media*, Through April,

University of Oregon Museum -- *Edward Stanton Mixed Media*, Through April,

University of Oregon Museum -- *Edward Stanton Mixed Media*, Through April,

University of Oregon Museum -- *Edward Stanton Mixed Media*, Through April,

University of Oregon Museum -- *Edward Stanton Mixed Media*, Through April,

Omnium-Gatherum

Street performers wanted

For the second year street performers will add color and excitement to the Downtown Mall. The Street Performers Program is sponsored by the Lane Regional Arts Council in conjunction with the Eugene Parks and Recreation Department and the Downtown Mall Association. The program has been clearly outlined so performers can "put the hat out" and not be in violation of the law. Auditions for the program will be held on May 1, at 2 p.m. in the Community Room, downstairs, in the Far West Federal Savings Building, 9th and Oak. Auditions will be no more than five minutes in length. All performers are encouraged, including musicians, mime artists, puppeteers, and jugglers. Performers who successfully complete the audition will be told when to pick up their identification button and charged a \$5 fee. Performers are asked to supply a personal photograph that measures 1 1/4" in diameter that will be used on an ID button. Buttons must be worn while performing.

For more information, please contact Valerie Brooks at 485-2278.

Rapist: who and why

This week's presentation, in the six-week *Understanding Sexual Violence* series concerns *The Rapist: Who He Is and Why He Attacks Women and Children*. Guest speakers will be Steve Jensen, Director of the State of Oregon Sex Offenders Treatment Program, and Howard Bierbaum, of the Men's Group, Rape Crisis Network.

The lecture will be held Tuesday, May 5, at the Wesley Center, 1236 Kincaid from 7 to 9 p.m.

The series, which is wheelchair accessible, is free and open to everyone.

For free childcare, pre-register up to the day of the lecture by calling 485-6700.

Devices on sale

Self-protection devices - immobilizers and door guards - are for sale at the Women's Awareness Center at all times. On Tuesdays, between noon and 1 p.m., Beth Hurd, the representative from the company, will be at the Center to explain the products and answer questions.

Books and booze

If you have problems with alcohol you might be interested in a relatively new support group here at Lane. Meetings take place in SCI 137A on Mondays and Wednesdays from 10 to 11 a.m. and on Tuesdays and Thursdays from 1 to 2 p.m. For more information stop by or call Paul Zuckerman or Marge Wynia at ext. 2457.

Buy mom some pot(s)

The Annual Mother's Day pottery sale, featuring the potting talents of the LCC faculty and students, will be held in the cafeteria May 4th & 5th from 9 a.m. to 4 p.m.

The proceeds from the sale, which will benefit the Art Department in these times of funding cuts, will be used for materials and equipment in the ceramics studio.

For more information call ext. 2417.

Womencare workshop

Womencare, a women's health center from San Diego, will be conducting a workshop on women and health. Topics will include self help, abortion rights, cervical caps, etc. Discussion will also include the current trends in healthcare for women, and the shift to the right in reproductive rights. The workshop will be held twice: Thursday, April 30th from 7-10 p.m. and Friday, May 1st, 1:30-4:30 p.m., both at 1236 Kincaid St. This event is being sponsored by Women's Referral and Resource Service and the YWCA, and further information can be obtained by calling 686-3327 or 686-4439.

Benefit at WOW hall

A benefit for nuclear questions will be held in the form of a masked ball at the WOW Hall, 8th & Lincoln, this Saturday night, May 2. The fun starts at 9 p.m. with music by *Native Pulse* and lights by *Phantasmagoria*. Admission is \$3 if you are in costume and \$3.50 if you are not.

Benefit breakfast Monday

On Monday, May 4, the Rape Crisis Network is having a benefit breakfast from 8 to 11 a.m. at the Homefried Truckstop at 790 E. 14th. Entertainment will be provided by local women musicians. Proceeds will be used to operate the Network's 24-hour crisis line. For more info call 485-6700.

Auditions mid-month

Lane Community College Summer Theatre '81 announces auditions for its production of *Metamorphoses*.

phases, a new musical by Arnold Weinstein and Tony Greco, directed by Julie Payne: May 18, 19, 20, at 7:30 p.m., at LCC main stage. Prepare a song of your choice; accompaniment provided. For more information, call Ed Ragozzino at 726-2209.

Lifeguards needed

Summer lifeguards and swimming instructors are needed by Eugene Parks and Recreation Department. Applications are now available at the department's main office, 858 Pearl Street, fourth floor. Advanced lifesaving and first aid skills are required. Instructors must also have water safety instructor certification. Written and water exams will be conducted before hiring. Salary range is \$3.59-\$5.31 per hour.

Graduating this spring?

If you are planning to graduate at the end of spring term, the deadline for applications for getting your name on the graduation program is May 15. To pick up applications go to the student records office weekdays from 8 a.m. to 5 p.m.

Jazz concert

The Lane Community College Jazz Band, directed by Sid Appleman, and the LCC Jazz Choir, directed by Dan Sachs, will present a joint concert in the college theatre, Thursday, May 7, at 8 p.m. The concert is free and will feature big-band music of the '30s and '40s as well as vocal swing, blues, and ballads. Sid Appleman will also play some piano solos.

Classifieds

wanted

FREE CLASSIFIEDS FOR LCC STUDENTS, FACULTY, and STAFF. Fifteen words. Non-commercial. Come'n get'em. They're hot!!!

FREE ADS ARE LIMITED TO FIFTEEN WORDS. Extra words, 10 cents each payable in advance.

CLAY EXTRUDER and dies. Must be in top condition and reasonably priced. Lanny, 688-2948, eves.

HOUSEMATES FOR 3 br. HOUSE. Near Autzen, Bus, bike paths. Yard/garden, fireplace. Steve, 741-1382, 726-3582.

WANTED: CARS AND PICK-UPS THAT ARE WRECKED OR REQUIRE WORK. 741-0932, 746-8715.

SMALL, SPRINGER OR COCKER SPANIEL. Prefer female. 485-3088.

HONDA XL-125 for parts or complete, cheap cycles that need work. 746-2890.

CHEAP SADDLE ---Any condition. 942-2939.

Vega Hatchback wanted, running or not. Body must be in good condition! 687-9655, Joe.

ELINQUENCY PROJECT on family communications needs work study certified person for half-time work. Call Marion, 485-2711.

I want one or two free or inexpensive gerbils, hamsters or guinea pigs. 741-0482.

TIRE OF IMPERSONAL AUTO REPAIR? Why not let a professional factory trained and certified mechanic give your little car the "personal touch" in the privacy of his own home workshop? Single parent responsibilities for two small children have forced me to quit my lucrative dealership job to bring you real savings on quality work for Volkswagen and Alpha Romeo vehicles. Jerry Berger, 344-4806.

STEREO WORKSHOP -- Hi-fi component repair. Also car stereo installations and repair. Monday-Saturday 10-6

126 N 28th, Springfield. 747-1597

ADDRESS AND STUFF ENVELOPES AT HOME. earnings unlimited, offer, send \$1, refundable to: Triple "S", 16243-231 Cajon, Hesperia, Ca. 92345.

Coach's wife will babysit in her home. LCC close on Bloomberg Rd. Phone Patty, 741-0826.

LITTLE RED CABOOSE PRE-SCHOOL has openings for pre-schoolers. Individual attention and creative activities. \$100 per month full time, 8:30-5:00. Parent participation encouraged. Southeast Eugene. Hall time available, too. Chris, 484-4042.

Rototilling, \$10 hr. or bid. Mowing, yard cleaning, \$4 hr. Harold Smith, 746-6321, message.

YMCA Pre-school -- ages 2-5, 9-12 am, 46th and Fox Hollow. Social, physical, educational development. 686-YMCA.

Student discounts on Rototilling. Probably the lowest prices in town. Check me out. Bob, 726-9636.

cars

78 DATSUN 200SX, air conditioning, sunroof, live speed, extras. Moving -- will negotiate. 726-8992.

1969 VW Bug. Good condition. AM/FM -- Runs good. \$1900 or best offer. 689-7644.

71 VW Bug -- blue velvet interior. \$1600 or make offer. 689-7379.

1976 Plymouth Fury -- 22 mpg, strong, dependable. 690 Lawrence (The Maples, No. 3) after 3.

73 DATSUN 240Z, good condition. New tires and brakes. 942-2930.

VAN -- Chevy 1967, 3-speed, good shape. Asking \$750. Call 741-1731.

MUST SELL BY JUNE -- 69 Datsun wagon and 4 extra wheels. \$600. Call 726-3834 eves.

69 GTO. Needs rebuild on motor. Body straight, new vinyl top. \$500. 343-1511.

1973 FORD VAN E-100. 6 cyl, long wheel base. Camper interior. \$800/best. Peter, 687-9098.

for sale

RECYCLED STEREO BUY-SELL-TRADE

STEREO WORKSHOP

Monday-Saturday 10-6

126 28th, Springfield, 741-1597

FRE. ADS ARE LIMITED TO FIFTEEN WORDS. Extra words, 10 cents each payable in advance.

REAR DECK SPOILER off 1970 Judge. Will fit most any car. \$150. 343-1511.

HARDWOOD LAMINATED TEAK -- True toking pleasure of the highest degree. 746-7207.

Ibanez Les Paul Guitar, 1 Dimarzio, 1 Humbucking Pick-up. Excellent. Must sell! Call 345-3437.

Crossman CO 2 Pellet Pistol. \$20. 343-7033.

Antique 1800's wagon hitched axles, 2 pieces. For lamps or whatever. --690 Lawrence, No. 3.

TWO BLACK LAB/SETTER MIX PUPPIES. Contact Mitzy at Art Dept., ext. 2410.

MUST SELL! Like new Purox Gas welding set. No tanks. \$75. 726-2834 eves.

STEREO EQUIPMENT. Speakers, amps., turntables, accessories. New, demos with warranties. Low prices. Details. Tom, 484-6888.

DOWN SLEEPING BAG. "Feathered Friends", Lite-tern, ultra-light, handmade. Xtra-long, perfect. \$215 (\$285 new). Tom, 484-6888.

VERY NICE AQUARIUM. 90-gallon complete with fish, stand and accessories. 746-8057 after 4 p.m.

messages

Paula, Yahoo! Alaska, here we come! Let's get outta here! Lisa.

Try adult music for a change. The Party Kings will put a rock in your sock.

Elisa -- Let's break the ice and be friends. Reply to Hilyard Albertson's.

Roommate for 4 br. 2 bath house. South Eugene. \$120 mo. plus utilities. Jeff, 686-2120.

NEED RIDE TO CORVALLIS, Friday, May 1. Share gas. Please call 485-0690.

How about a suggestion/complaint box in the cafeteria???

Party Kings -- Blues Power!! Adult rockin', rythm and blues. Put some quake in your shake.

For rent: one bedroom in large house. House privileges; washer dryer, dishwasher -- non-smokers. 746-0940.

Give/take ride -- Yellowstone Park. Must be there 6/15. Share expenses. 998-8367

If you're indignant about El Salvador, how can you let your Anglo cousins die in Ireland? Bobby Sands is dying for your sins of omission.

Free to tropical fish lovers. Four fish left. Call eves. 741-2074.

Gigi and Lisa: Thanks for all your support, I really need it. Chooch.

Sand: The key to the problem could be the key. GU.

Good old boy looking for female counterpart, free of scabies and other disgusting stuff. 271-1000.

Eddie -- I love you. Kangaroo.

LOST: Family tree with some pictures in bookstore. Call Karry. 689-2929 or 342-8191.

Kyla: I love you. Raoul.

LCC Bookstore's blonde male clerk -- sensed NICE chemistry. Reply here! Blue-eyed woman, rust coat.

Gary Sokolowski: Great ass. Wear your jeans more often.

VW and LS -- I told you never to call me here! SC

CH -- Thank you for "being there". Love ya Sweetheart. KLM

Lost in parking lot. Black pouch with school work and notes. Call 746-9961. Reward.

NEM: Happy 19th Birthday Friday. Friends always, MEW

Fairy May: Just 22 more days and counting down! Shimmy

G. How'd you get to be so wonderful? Babycakes.

College isn't worth dying for.

Darren -- Still have the Rambler for sale? Lost your number -- Leave message at TORCH. Mara.

BJDeN: Do you know I love you. If you don't, I do. CB

WE: Thru all the storms you're still my best friend and lover.

HAPPY FIRST of many more. Love, AB

A and S: Hardly ever see you! Jayne says party official. See you there. Lisa

TT -- I love you! TT

Dana, I love surprises. Come again! Say "hi" to Diane. Love, Paula.

Sunshine, I live as close to you as you to me, so come over. PR

Lisa, it's been a long time! It's going to be a nice summer, ya know?!

Bruce you really are loved!!!

KS and Joe, I really enjoy the times we are together. I'll miss you. LL

To honest person who turned my billfold in -- bonus karma coupons for you!! Thanks. WF

Student of SC: Why seek truth when truth seeks you? You'll go 'round in circles! Skipland.

G -- Sweetie pie. Babycakes.

Work next year (for pay) as a Student Service Associate. Applications at Counseling Dept.

God's greatest treasure is man's smile. -- Sri Chinmoy

Audrey -- let's soar into the heavens on the wings of love. The Dan-dy.

Dave, it was nice talking to you about possums and bears. See ya around, Paula.

Cosmic Crusher -- Alpha-Centauri returnees. Unicorn at Communit. Dragonstar for Lifewater? Gizzy, too! Ziggy Stareater.

Who will give flowers to all the ladies? Nobody! Vote Nobody for ASSLCC President.

Ziggy/Gizzy: Stareaters are the craziest unicorn riders. How about the stars sometime? Cosmic Crusher.

The Society for the Prevention of Cruelty to Students wants Robert Thompson dead or alive.

Dependable worker needs employment -- painting, carpets, landscape, etc., plus bonded, tax-credit available. Les, 344-2516.

JOBS AND TRAINING FOR YOUTH

Do you need a job? or
Do you want training?

Youth 22 and younger who live outside the Eugene city limits who qualify for CETA programs should call: 687-3794 or Toll-free: 1-800-452-6379 ext. 3794

DO IT TODAY!

An Equal Opportunity Employer



Time is money.
We can save you both.

Kinko's Copies
764 E. 13th 344-7894

Rags to Riches



Second Hand Clothing

Featuring contemporary and vintage styles. We carry name brands, a large selection and new arrivals daily.

500 E. 11th
Between Mills & High

Ph. 344-7039
Hrs. 11:30-6 Mon-Sat