

## Group bus pass proposal won't appear on ballot

by JOE HARWOOD  
Torch Editor

Despite recent progress in negotiations with LTD for a group bus pass for Lane students, the Student Senate voted by consensus on April 23 not to include the measure on the spring ASLCC election ballot.

LCC's chief negotiators, Martin Lewis and Vincent Jones, recommended that the student government reject LTD's latest offer of \$8.67 per student per term due to its relatively high dollar amount.

Comparatively, U of O students will be asked to re-approve their 5 year-old group bus pass

program this spring -- at rates under \$6 per student.

Members of the Senate said that while the \$8.67 is a good deal for bus riders, it would be unfair to assess the cost to students who cannot or do not utilize bus service.

Nevertheless, negotiations will continue until both parties reach a mutually agreeable figure. Jones says there is still a slim chance a special election could be held before the end of May in the event of further progress.

"We will go to the students with a special election only when the price is in the best interests of those students," says Jones.

## Budget shortfall predicted

LCC "safe" for one more year

by JOE HARWOOD  
Torch Editor

**Editor's note:** This is an introduction to an upcoming series exploring the alternatives LCC will consider in the face of a diminishing funding base brought about by Measure 5.

While most other colleges around the state are in the continuing process of program and staff reductions in response to the Measure 5 funding gap, LCC expects to keep its programs intact -- for at least another year.

College administrators hope to postpone the inevitable cuts in programs and services until fiscal year 1993-94, when they project an estimated \$3-7 million financial shortfall. If the state legislature allows the college its November, 1991 voter-approved tax base increase of \$3.75 million in 1993, administrators expect a deficit of just over \$3 million.

"Our biggest problem right now isn't future fiscal problems, it's the uncertainty," says LCC President Jerry Moskus.

However, Moskus admits some reductions in programs -- which means staff lay-offs -- will eventually take place unless the state mitigates Measure 5 in some way. He says the college has not convened discussions on specific program cuts so far. Before it does so, says Moskus, the college will first establish criteria for "reshaping the institution."



### Pow-Wow Princess

Jennie Terrazas (White Feather) dances for students on April 22. The dance is a warm-up for LCC's First Annual Indian Education Pow-Wow. The event takes place at LCC on April 25.

Photo by Arthur Mason

## OCA measure devisive for voters

Opponents argue special rights versus human rights

by KIM CHALLIS-ROTH  
Torch Lead Writer

Loretta Neet, of the Oregon Citizen's Alliance (OCA), wears a button proclaiming: "No Special Rights!"

Bill Morrisette, the mayor of Springfield, sports a button which says: "Human Rights Are Not Special Rights!"

On May 19, voters in Springfield will decide if the OCA's Ballot Measure 20-08 will pass, amending the city charter to read "The city of Springfield prohibits the recognition of homosexuality, other behaviors as sexual orientation, and from promoting these

behaviors."

Neet, who is the state coalition director for the "No Special Rights" committee, a political action committee of the OCA, says gays already have the same rights as everyone else and they don't deserve more.

"If homosexuals get the minority status they want, it will be unfair for everyone else," says Neet. "Why should they get a special break?"

In an April 17 letter to the editor of the Eugene Register-Guard Neet said: "Granting minority status on the basis of sexual orientation is dangerous. Even if the claim of being born that way

was supported by any substantial evidence, does that put the stamp of approval on the behavior?"

Mayor Morrisette says Neet and the OCA are what's dangerous.

"If the initiative passes," he says, "it will be like going back to the 'McCarthy Era' -- people will be accused of homosexuality because of association. I see the burden of proof falling on the accused. The whole thing is a denial of basic human rights!"

But Neet maintains, "The public has been misinformed about the OCA. We are not into 'hate crimes'. We denounced turn to OCA page 9

## Financial Aid awards tied up in computer conversion

by TRACY BROOKS  
Torch Associate Editor

Phone calls, long lines, and frustrated students have the Financial Aid office calling foul as it converts its operation to a new mainframe computer system. The change is causing confusion and an increased workload in the Financial Aid office, a situation which has both students and staff agitated, says Director of Financial Aid Linda Waddell.

The college plans to covert all existing data to its new Hewlett Packard mainframe system by July 1.

But the Financial Aid office must use the new system now in order to handle its 1992-93 financial aid cases. At the same time, the office staff is completing its 1991-92 financial aid cases on the old system.

Waddell compares the situation to assembling an airplane while bouncing down the runway. "We're designing the plane as we're taking off," says Linda Dewitt, associate director of Financial Aid.

All of the 1992-93 case files are stored in the new

system, says DeWitt, while all records filed before that are stored in the old system. The staff uses the computer files to track documents, analyze student financial need, write award letters, make award payments, and determine if students are properly enrolled. But without previous years' information to draw upon, the new computer cannot manage some of the functions it has in the past, such as document tracking. Until the old files are stored in the new system, the additional workload must be performed manually by staff members, says DeWitt, which slows down the award process. The office is also unable to provide the detailed information it has in the past about students' award dates.

Further complicating the situation, say Waddell and Dewitt, is the fact that the staff has been swamped with phone calls and visits to the office by students asking questions and expressing concerns about next year's financial aid packages and awards, which are late this year. The additional time needed to deal with curious students is taking the staff away from its job of disbursing financial aid and acclimating the office to the new system, they say.

The staff also has to deal with about 1000 more financial aid applications this year than it did last year, says Dewitt. Between tailoring the new system, processing additional applications, and fielding increased student concern, the staff isn't making much headway on financial aid claims, says Waddell.

"We're doing the best we can," says DeWitt, but the office needs student cooperation. Having to deal with a high volume of student questions becomes counter-productive.

DeWitt says she anticipates award letters will be mailed in June -- two months later than usual -- but she cannot provide specific information beyond that. The staff is considering posting information displays which will provide general information about where students are in the process, says DeWitt. Hopefully, this will prevent students from calling the office to ask questions that staff members cannot answer.

"Ultimately, it's (the new system) really going to speed us up," says DeWitt. But until that time, she says, the staff needs to be left alone to do its job.

# Lane seeks nominations for Instructor of the Year

by CHARLES SMITH  
Torch Staff Writer

The opportunity to nominate LCC's Outstanding Instructor of the Year has arrived. The honor, designed to reward teaching staff members who have demonstrated excellence in education, is presented to a teaching staff member from the main campus, or any of the satellite campuses.

In nominating an instructor, students should describe the following:

- The instructor's personal qualities and attributes.
- His/her mastery, scholarship, devotion to teaching.
- His/her attitude toward relations with students.
- The instructor's teaching methods and procedures.

The committee selecting the Instructor of the Year is made up of six members representing both faculty and classified staff, including the two previous award recipients, the coordinator of the Cottage Grove campus, an LCC counselor, and two department chairpersons. The selection committee takes into account the number of nominations

an instructor receives and also uses a criteria checklist.

Some faculty members chosen in past years as the outstanding instructor have earned other awards for teaching excellence.

Business Department Chair James Cagney, who leads this year's award committee says, "It has a lot of impact outside of the college."

Joan Ryan, last year's winner, was selected The Outstanding Business Teacher in the Western United States and Canada in February, an event Cagney attributes to her LCC recognition.

Ginny Nelson, the 1990-91 winner, was named the Oregon Foreign Language Instructor of the Year.

The name of the winner is kept secret until the LCC Vice President of Instruction, Jim Ellison, visits the instructor's class and surprises him or her with the award.

Any student or LCC staff member can nominate an instructor for the award. Nomination forms are available on the first floor of the Business Department, and should be returned there, completed, by April 30. Students may submit as many nomination forms as they wish.

# Graduation deadlines approaching

Students urged to meet important May 1 deadline

by CATE JOHNSON  
Torch Staff Writer

LCC's annual college, adult high school and GED graduation ceremonies will be held at 7:30 p.m. on June 4 and 5 at the Hult Center for the Performing Arts.

According to Sally Meadow, administrative assistant for Student Activities, the adult high school and GED graduation will be held on June 4 and the college graduation on June 5. The deadline for students to file for graduation and have their names printed in the program is May 1.

"The May 1 deadline is really important," says Meadow. "Students who do not make the deadline can still go through the graduation process — but they won't have their name in the program."

Students do not need to order tickets this year, however, invitations should be limited to immediate family and close friends, says Meadow.

"It is a beautiful ceremony and students should be encouraged to attend. Some people think it's just boring, but if they knew how nice it is they would go," says Meadow.

Business major Rodney Johnson says he is excited and looking forward to the event. "It's a dream come true," says Johnson. "It's been a long struggle for me, but it was

**"It's been a dream come true. It's been a long struggle for me, but it was something I really wanted."**

Rodney Johnson

something I really wanted and I'm glad I was able to stick with it and finish."

The ceremony will feature Jack Powell, head of the English

Department, as master of ceremonies and "up beat" Luke Barber as the speaker. The music will be performed by John Workman on the piano, Dennis Caffey on the drums, and Nathan Waddell on the bass. The trio will play Workman's piece, titled "Blues for Philip."

Also at the ceremony, the award for the Outstanding Instructor of the Year Award will be presented, as well as the Student of the Year Award.

Caps and gowns will be available from June 1 through June 5. "It's really important students try to get them early and not wait until Friday afternoon. We do not give out caps and gowns at the Hult Center," says Meadow.

According to Meadow, students should be at the Hult Center with their caps and gowns by 6:30 p.m.

She advises students to leave purses and personal articles with someone before the ceremony as there is no storage at the Hult Center.

# College converting mainframe computer systems

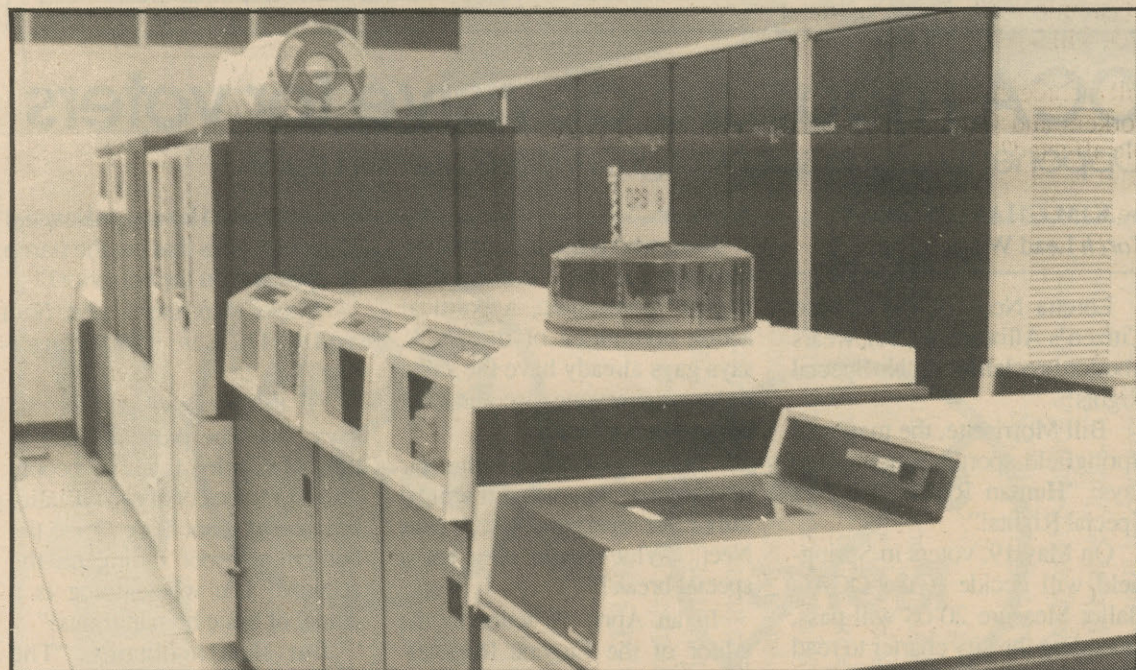


Photo by Glennis Pahlmann

LCC's old mainframe computer system takes up an entire room while the new Hewlett Packard occupies only about 1/4 of the space.

by TRACY BROOKS  
Torch Associate Editor

By fall term, 1992, all departments on campus will convert computer operations to a new Hewlett Packard Mainframe system, which will make communication more effective on the campus, says Jim Keizur, director of Computer Services.

The college is financing the \$1.3 million system at roughly \$300,000 per year. But Keizur says the payments are equal to those the college makes on its current system, so the cost will not draw additional funds out of the college budget.

"The college is getting much more for the money," he says. Computer information will be more readily available to those who need it, will increase the college's computing capacity, and will expand the college's ability to educate.

In addition to installing the Hewlett Packard system, the college is rewiring the campus with fiber-optic cable to expand the college computer network and increase the capacity for data communication, says Keizur.

But the replacement of the old with the new is a "stressful time" which takes a lot of patience and extra effort on the part of college employees, he says. Converting all of the college's existing data banks is very time-consuming and sometimes doubles employee workloads, as is the case with the Financial Aid and Admissions Offices, which are already using the new system.

"That's... a hump we need to get over," says Keizur. The result will be worth it, though.

"We'll be much more responsive," he says, to campus needs.



## FIRST AID

✕ bruised egos  
 ✕ broken hearts  
 ✕ decision-torn minds  
 ✕ damaged self-esteem

## Campus Ministry

center 242  
or call ext. 2850

### The Renaissance Room

Lunch Menu for  
Wed, April 29

Morning Glory  
New England Clam Chowder  
House Salad  
Baked Ham w/ Cider Sauce  
Fish and Chips  
Apricot Nut Torte

Classical Cuisine Dinner  
Thurs April 30

Linguine w/ Leeks and Prosciutto  
Duck a l'orange, Wild Rice and  
Asparagus, Garden Salad  
Frozen Cognac Souffle  
Macaroon Ring

RENAISSANCE ROOM  
Center 107 (next to the deli)  
Open W & Th 11:30 - 1:15 p.m.  
For reservations call ext. 2697

## YOUR Environmental STORE

Your Home for Compact Fluorescent Lighting



12.95 EACH

### PANASONIC Fluorescent Light Capsules

Uses 15 Watts to Replace 60 Watts  
LASTS 9 TIMES LONGER

Located inside GREATER GOODS 515 HIGH ST. 485-4224

FEATURING:

- Compact Fluorescent Lighting
- Full Spectrum Light Bulbs
- Solar Battery Chargers & Millenium Rechargeable Batteries
- Solar Panels
- Low Flow Faucet Aerators & Shower Heads
- Water Filters
- NonToxic Paints & Sealants
- Great Prices & Good Service

# Students find payoff in demanding dental program

High pressure dental program proves motivation and initiative are keys to success in the job market

by JOE HARWOOD  
Torch Editor

In an era when college graduation doesn't guarantee a job, or even a family-level wage, some LCC dentistry students are playing the odds and winning. Most dentistry graduates enter a career field with a 95 percent employment rate within three months of receiving a degree.

One dental hygiene student, Chris Bigham, has already accepted a job with a local dentist. "I take the regional board (exam) on June 20. If I pass the boards, I start my job on July 1." When asked about a starting salary, Bigham says, "In Eugene, the going hourly rate is \$17-21 per hour."

But, as with all things worthwhile, a high degree of initiative and motivation is required for LCC's Dental Hygiene and Dental Assisting Programs. Simply being accepted into the programs

is an accomplishment.

The Dental Assisting Program, with an intense nine-month degree curriculum, quit sending out applications two weeks ago because it received 107 applications for the 30 positions open for 1992-93. The application deadline isn't until mid-July.

"Every year the program is full. For the last two years, it has filled two months before the deadline date," says Beth Webb, coordinator for Dental Assisting. She attributes the student demand to the caliber of the program and the high employment rates.

The dental assisting curriculum includes the study of radiology (oral X-rays), lab work, and working directly with dentists and hygienists. Webb says assistants are being assigned more duties in oral care in the workplace than in the past, subsequently, their training requirements have increased.

"We had 23 credits fall term, which gave us no social life," says Jessica Huttula, who is nearing graduation as a dental assistant. She admits the intensity of the course load is tough, and says, "The ones that are too young and can't handle it washout in the first few weeks."

Webb says the washout rate is about six students per year.

The Dental Hygiene Program is even more demanding. It's a two-year program in which many of the students already have worked as dental assistants. Graduates can expect relatively high wages and a greater sense of independence.

"Competition is very stiff to get into the program," says Dental Hygiene Coordinator Sharon Hagan. To be considered for entry, applicants must have already completed all their science requirements — as well as the ma-

jority of general courses. Of the 150 applications received last year, only 20 students gained entry.

After acceptance, students take 10 to 17 credit hours per term, with hands-on clinical time gradually increasing as they learn new skills. "By the second year, hygiene students are spending 12 to 18 hours per week in the lab," says Hagan.

She says students start out practicing on each other, then progress to children from local schools. Eventually, the students work on patients from the general public, at greatly reduced costs. LCC students are encouraged to take advantage of the service.

Hygienists provide teeth cleaning, root planning, curettage sealants (a process in which a thin plastic coating is applied to the tooth to prevent decay), fluoride treatments, and advanced periodontal care.

Recently, the two programs combined to service over 90 kids

from Whittaker Elementary School — classified as the most disadvantaged school in the state. The youngsters received an exam, including X-rays, a teeth cleaning, the application of a sealant — to prevent cavities, and periodontal disease prevention education.

According to Maxine Proskurowski, Whittaker school nurse, "This is a wonderful service for the kids. They come from such disadvantaged homes. Most of these kids wouldn't get dental care without the LCC program."

Hagan says the service aids both parties. "It helps the students get good clinical experience, and the children get dental care they would not otherwise receive."

LCC's Dental clinic provides all routine periodontal care, with the exception of filling cavities and oral surgery. When advanced care is needed, the students work under the supervision of a staff dentist. To make an appointment, call 726-2206.

## Opposite forces to unite in effort to face economic, environmental challenges

by LYNN REA  
Torch Editorial Staff

In an attempt to find common ground among environmental and timber issues, environmentalists, government officials, union representatives, displaced timber workers and other interested parties will meet at LCC May 2 for a conference called "Facing the Challenge Together: Creating Economic Transition in the Pacific Northwest."

"The media has made it the owls vs. jobs," says conference organizer and LCC Instructor Jerome Garger. "The issue is more complex than that. The solution is somewhere in the middle."

In 1990 LCC hosted the first economic transitions conference, bringing together 225 participants from diverse backgrounds.

According to Garger a past student attending the event said, "In my group there were an environmentalist, a worker being retrained at LCC, a private mill owner, a student, a political science professor, and a logger. We all learned from each other. There seemed to be a natural bonding between the workers and the environmentalists, although the press has promoted the idea that these two groups were diametrically opposed."

This year the conference will include two panels of speakers followed by small group workshops on related topics.

Tony Mazzocchi, presidential assistant for the Oil, Chemical and Atomic Workers International Union of AFL-CIO, will be the keynote speaker.

Discussions will include the following topics: Transition for workers and families; Who and how are the people affected? What kind of transition do people and families need and deserve? Transitions for communities and economies; What can be done to make our community survive, adapt, and prosper?

"Our resources are being extracted by means of environmentally devastating methods, and the lives of loyal hard working people are being trashed by an out-of-control economic system based on maximum short term profit," says Garger.

"Education is the key to formulating sustainable policies that meet ecological, economic and social necessities. LCC has led the way in this area creating the opportunity for civil discussion of complex, divisive issues."

The conference, which takes place from 8:30 a.m.-4 p.m., is \$7 for the general public, \$5 for students, seniors, and the unemployed, and includes a light breakfast and lunch. Preregistration is advised. Childcare is available but must be arranged in advance. To register, or obtain more information, call LCC's President's Office at 726-2200.

## ASLCC Campus Calendar

### Saturday, April 25

1st Annual Statewide Title V Indian Education POW-WOW  
Dancing, Crafts, Concessions, Raffle  
Grand Entry at 7:00 p.m., LCC Gymnasium.

### Tuesday, April 28

Native American Student Association Meeting  
Business 202, 2:00 - 3:00 p.m.  
Everyone welcome

### Thursday, April 30

ASLCC Senate Meeting  
P.E. 205 3:00 - 5:00 p.m.

Multi-cultural Center Social Hour  
Center 409 1:30 - 3:00 p.m.  
Turn out, fill up, talk it up.

### Corrections

In the March 6 issue of the *Torch*, the story "Dislocated workers receive unsolicited gift" referred to Dislocated workers as "injured" workers. The workers were not injured in their field, they were dislocated or laid off.

In the April 10 ASLCC meeting article, the *Torch* reported that Kim Gallagher would be attending a lesbian, gay, and bisexual conference in Beaverton. Instead she will be attending a displaced home-makers conference in Newport and JoAnn Wilson will attend the Beaverton conference.

### SURATA SOYFOODS COOPERATIVE

Food choices affect Energy Independence.

It takes much less fossil fuel to produce a pound of soybeans than it does to produce a pound of meat. We can make an impact on our fossil fuel reliance, global warming, individual health, and world hunger simply by eating non-animal sources of protein.

For free tofu and tempeh recipes send a self-addressed stamped envelope to Surata Soyfoods Co-op  
302 Blair Blvd.  
Eugene OR 97402.



Read the voters pamphlet in this issue!

Vote and the choice is yours  
Don't vote and the choice is theirs  
Make the choice.

### Elections May 4,5,6

In Cafeteria, outside Math & Arts, and outside Health & P.E.

## Choose to care, vote in elections

To the Editor,

I attended LCC during the 1987-1988 school years and was a student associate. I held numerous student offices including senator which I am listing at the end of the letter because I want to stress the amount of time and commitment that may be required of a member of student government, especially if you have an apathetic student council or a large turnover of senators, as happened in my era. I was involved in some capacity with three ASLCC administrations, and have seen the good, the bad, and the apathetic in each.

ASLCC leaders are truly the image that legislators will have of the student body as a whole. Their ability to bring together sheer numbers is crucial to your success.

I worked with past administrations that suffered from lack of interest, lack of initiative, promotion of personal agendas, backstabbing, and lack of sharing. I worked with one administration that did great things that are now generally taken for granted: computers for student government, the Student Resource Center, LCC Student Housing Guide, outreach to other community colleges, Teacher of the Year, Martin Luther King Program, community projects, and expanded SRC services, canned food drive, just to name a few.

I still care very deeply about ASLCC government and student funding, and even though I am not currently attending LCC, I follow closely the matters that affect the school. This is why I am writing to endorse Vincent Jones and Nickie King for president and vice president of ASLCC. I know that Vincent and Nickie are the right

team for the forthcoming year!! They believe in the students and the issues that concern all parties involved, no matter what reason you are attending LCC.

If you believe in your future, if you believe in LCC you WILL vote for your student leaders, and you WILL study your choices. If you don't vote, that IS a choice--you choose not to care.

James T. Wilson  
Former ASLCC Senator

## Error in Torch article clarified

To the Editor,

I would like to clarify several points with regards to the article "Making ends meet difficult," by Cate Johnson in the *Torch*, April 10.

First of all, there was an apparent miscommunication between myself and Ms. Johnson regarding my time on campus. When I teach two classes, I am in class three hours and in office one hour per day for a minimum of eight hours per week. In reality I am often on campus several more hours doing preparation and meeting with students who can not meet with me during my regular office times. This means I am often on campus seven hours per day, not per week.

Secondly, I want to dispel any implication that I am resentful that I have not been hired full-time. I was hired with the clear understanding there was no guarantee that I would ever be hired full time. If I was, it would be after an opening occurred via departure of a current full time instructor and through normal hiring channels.

My primary complaint with the college is that I, and all other part time instructors, are paid at a rate that is, at best, 50% or less, than that of full time contracted instructors. This means that, un-

der the current contract an instructor with a PhD and the maximum level of teaching experience, would be paid about the same for teaching a full load, if paid on the part time scale, as an instructor with minimum credentials and no teaching experience whatsoever, but who was paid on the full time scale.

Furthermore, we have no seniority, which means that regardless of how long, or how well we have worked for the college, we can be replaced for virtually any reason without recourse.

While I enjoy teaching at LCC, and I enjoy the flexibility of teaching part time, I do feel resentful that I am expected to have the same qualifications, the same skills, and perform as well as a full time instructor. Yet I am asked to do so for considerably lower pay, virtually no benefits, and no job protection.

If our skills and flexibility are so valuable to the college we part timers should be rewarded for our value on a comparable basis with full-timers. I think it is long past the time when our society, and LCC in particular, should move towards equal pay for equal work, whether that work is performed by women, minorities, or part-timers.

I hope our full-time colleagues recognize this moral fact and will support our efforts to move towards parity in the next contract negotiations.

Dan Welton

## Clean election sought by voter

To the Editor

I am writing this letter in hope that the people running for various student government offices will take note. I sincerely hope that this year's ASLCC elections are not a part of the national tendency to run negative campaigns.

Negative campaigns have no place on LCC's campus. I will not even consider a candidate that runs a negative campaign. Look what has happened to Jerry Brown because of his negative campaigning. It has backfired and now various people are using negative campaigning against him. I know that the students at Lane are above mud slinging. Here's to clean campaigning a great election. Don't forget to vote May 4,5,6!

Norma Minnick

## ASLCC election needs voters

To The Editor:

Why should I vote in the student elections? I just want to get through class, get through my job, and get home to do my homework... what does student government have to do with ME? Just what I used to think--that is, until my unemployment ran out, the extension ran out, Mr. Bush wouldn't sign a new one, and the Feds lowered the debt ceiling for student loans to community college students right in the middle of my schooling. No warning--no notice. I was a hair's breath away from being evicted from my home and living in a dumpster.

I paid taxes for 20 years. I had a career -- then due to health issues I had to go back to school--and felt flushed down the toilet by the system that professed to help. Even though I qualified for maximum aid, and was a certified dislocated worker.

I have attended LCC since 1988, and have just a few classes left for an AA, and I will not be receiving any more financial aid from LCC, but will still be receiving aid for the Management of Human Resources program I will be attending. I decided that I had better get off the dime and get

involved or I may still end up at "Bag Lady U."

Our ASLCC government has GOT to pull together for credibility not only with our own LCC Board and Administration, but as a strong voice among the other community colleges to form the strength in numbers, and the unified voice it will take to sway our government and save vital funding.

I have great respect and admiration for any student who chooses to run for an ASLCC position, knowing the time, dedication, and energy they will invest, and the depth of courage it takes to put yourself out there for scrutiny.

There can, however, be only one president, and one vice president. For me, two candidates stand out as exceptional, and that is why I have chosen to get involved, and to support and promote the candidacies of Vincent Jones and Nickie King for these positions. I believe they each have the qualities and abilities necessary for these tough jobs. They have been at school long enough to be aware of, and understand the concerns of every faction, no matter what the agenda. They have innovative ideas for solving the problems that will arise, and the tenacity to see them through. They are strong team players who know how to bring out the best in others. They have the networking skills and resources to pick competent people to do the job.

You MUST pay attention; you MUST vote. You MUST pick the very best candidates for the job. Your involvement MUST start here, at ground level. Who our next president of the United States will be is equally as important to your future as who leads your next student government. Not voting IS a choice that you can't afford to make.

Wendy Weir

# Cultural Director looks to light student fire

Forum  
by STEVE BAUERS  
ASLCC Cultural Director

Politics is something we all have to deal with. Some people love it, some people think they have nothing to do with it, but it is something we have to deal with sooner or later.

As part of my education here at Lane, hands-on experience in politics became of interest to me. I wanted to learn how the system works from the inside. Even though my major is fine arts I knew that the workings of politics would end up affecting me, even though sculpture is as far from government as you can get. I started my political education by running for a senator's seat with ASLCC in Spring '91, and last term I was appointed Cultural Director.

It was the politics within the Art Department that prompted me to increase my knowledge of politics. Several Lane students, including myself applied for the Sculpture Aide position that is filled by a new person each year. The job in the past was designed to help a student from LCC with two years of

sculpture to extend his/her knowledge of materials and use of tools. Last year the job went to Tim Outman, a master's graduate from the U of O's art program. The year before that it went to a professional artist named Gary Stanfield, and the year before that to a bachelor's of fine arts graduate named David Chalet. Even though each of these people did a good job, the position didn't aide an LCC student.

The Art Department just appointed the aide for next year. In the running were two very qualified students from our sculpture program. Andy has been taking classes at Lane for over two years. He told the selection committee that his focus is to further his education and that he would most likely be transferring to another college. Steve, the other applicant has about two years at Lane and was willing to stay for this job. Both students have won the prestigious League of Innovations competition for their sculpture.

Steve is well liked in the Art Department. The first year Steve was here he asked advice of both instructors regularly. But this year one of the instructors in the Art Department cut relations with Steve, and blocked the

hiring of Steve during the selection process. This same instructor had a contest among his independent studies students and didn't work with the other instructors in the process, there by alienating half of the students in the independent studies program. He personally made the selection, and the project is being built with only one student entering a viable entry.

My reason for telling you my stories from the Art Department is to light a fire. In every department on campus there must be similar stories of how campus politics have gotten in the way of students. We can do something about it! This college is supported by us the students. Without us the college can't exist. Students have the power to create positive change on campus due to the fact that we are the most numerous group.

The way to start making change is to VOTE!! ASLCC elections are this term.

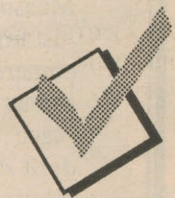
This year positive changes have started to be made on campus. We have informed candidates running for several of the ASLCC positions.

Get involved, do your part and vote! The changes are yours to make.

## TORCH STAFF

Editor ..... Joe Harwood  
Associate Editor..... Tracy Brooks  
Contributing Editor..... Kelley Egge  
Sports Editor..... Robert Catalano  
Production Manager..... Jeanette Nadeau  
Photo Editor..... Dana Krizan  
Arts & Entertainment Editor..... Lynn Rea  
Assistant Production Manager..... Robert Nydam  
Assistant Photo Editor..... Arthur Mason  
Cartoonists..... Drew Johnson, Aaron Jamison  
Staff Photographers..... Erin Nailon, Anna Henry, Cate Johnson, Glennis Pahlman, Matthew J. Auxier, Kim McCauley  
Staff Writers..... Lynn Rea, Chukar Bacon, Eric James, Luke Strahota, Erin Sutton, Charles R. Smith, Aaron Jamison, Kim Challis-Roth, Deborah Stotler  
Production Staff..... Erin Sutton, Cate Johnson, Amy Van Zylveld, Sonja Taylor, Kim McCauley, Anthony Tillitt, Lynn Rea, Tami Patton, Tad Maupin  
Advertising Assistant..... Sonja Taylor  
Classified Advertising Manager..... Sonja Taylor  
Distribution Manager..... Travis Glover  
News & Editorial Advisor..... Pete Peterson  
Production Advisor..... Dorothy Weame  
Advertising Advisor..... Jan Brown  
Printer..... Springfield News  
The Torch is a student-managed newspaper published on Fridays, September through May.  
Columns and Commentaries are published with a byline and do not necessarily represent the opinion of the Torch.  
Forums are essays contributed by Torch readers and are aimed at broad issues facing members of the community. They should be limited to 750 words. Deadline: Monday at noon.  
Letters to the Editor are intended as short commentaries on stories appearing in the Torch or current issues that may concern the local community. Letters should be limited to 250 words, include the phone number and address. Deadline: Monday, noon.  
The editor reserves the right to edit forums and letters to the editor.  
Bring mail or correspondence to the Torch, Room 205 Center Building, 4000 E. 30th Ave., Eugene, OR. 97405 Phone 747-4501 ext. 2657.

# Time to Vote

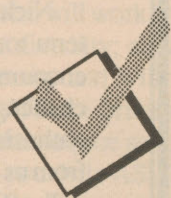


## PLACES and Times:

Outside Health & PE Building, from 8 a.m. - 6 p.m.

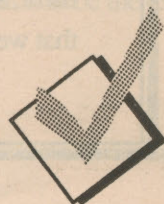
Outside second floor of Math & Arts Building, from 8 a.m.- 6 p.m.

In the Cafeteria, from 8 a.m.- 8 p.m.



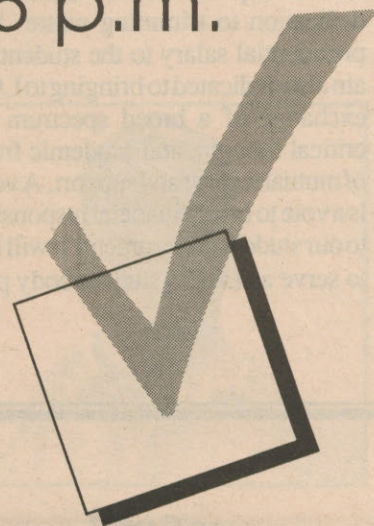
## Days:

May 4, 5, 6, 1992



## Requirement:

Current student ID.

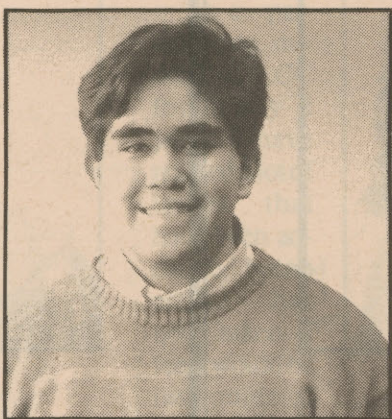


## Treasurer

"Monetary Equality - Not - Personal Interest" —I want to represent the students, to ensure that monies coming in to LCC are being equally distributed, not being used for personal interests.

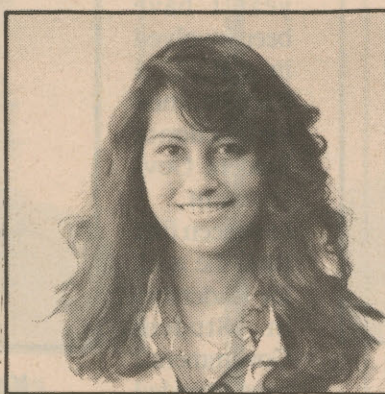
My qualifications are: accounting and computer skills, diversity of cultural insights. I have lived in two different countries and can identify with international students and disabled persons because, I have overcome my own sight disabilities, which was a major challenge.

I am committed to the people in making regular financial reports in the student newspaper "The Torch." I will circulate petitions to the students in the event of injustices within the government fiscal structure. I will also oppose any unneeded special interest drives in the student government meetings, that will not benefit the school. Thank you for your support!



**Federico Hernandez**

As Treasurer of the ASLCC, I will carefully manage all funds of the ASLCC, recommending the distribution of funds to organizations which will directly benefit the students. I will be inquisitive of unnecessary budget transfers and closely monitor balances of each account, ensuring there are no overdrafts. I am a business major with 4 years of Accounting experience, including 2 years of classroom studies. School is my top priority and I will blanket the ASLCC Treasurer position and make it top priority also. I promise to exceed the expectations of the LCC students and perform my duties within the students' best interests. Thank you for your vote.



**Keiko Straub**

What has our student government done for us . . . lately? With the massive budget it has to work with, we should be seeing more than an occasional cafeteria band. With

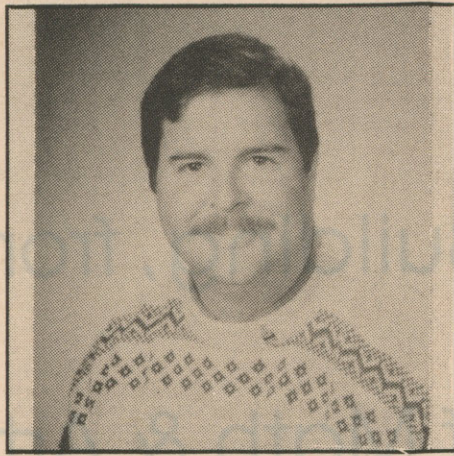
your support, I would like the opportunity to contribute to a more progressive student government in the position of ASLCC treasurer. If elected, I would work toward the responsible management of student fees with an emphasis on accountability, supporting an open door policy and publication of a report to the student body each term on how your fees are being spent. Vote for accountability, vote WALTZ for ASLCC Treasurer



**Barry Waltz**

The Torch edited platform statements for spelling errors only. Any grammar or punctuation errors were made on the part of the individual authors. Views expressed in the contents of this voters' guide do not necessarily reflect the views of the Torch.

Did you know that LCC students pay hundreds of thousands of dollars annually in student fees? For the past several months I have served as your senator in student government; during this time I have noticed many examples of the waste of our student fees. As your president, I will bring financial accountability to student government, and do everything I can to stop the rise of student fees. I will show my dedication to trimming waste by returning the \$5,400 presidential salary to the student government treasury. I am also dedicated to bringing to LCC an opportunity for the exchange of a broad spectrum of ideas and opinions, critical thought, and academic freedom in an atmosphere of mutual respect and support. A vote for Bill Hollingsworth is a vote to bring financial responsibility and accountability to our student government. It will be an honor and privilege to serve as LCC's student body president.



**William Hollingsworth**

As Vice President of ASLCC I will provide an open door, and a ready ear to students, assisting them in finding solutions to problems, and creating the kinds of projects that enhance the college experience.



**Bonita Rinehart**

As editor of LCC's award winning *Denali* magazine I have had considerable experience in organization and creative realizations, such as the Young People's Poetry Reading to benefit Food For Lane County and Toys for Tots. I will bring those same skills and dedication to the office of Vice President.

The full impact of Measure 5 is just around the corner and fear cannot take the place of student action. Now more than ever, is the time to take charge of our student funding.

The impending fund aspects of student involvement invest a lot in our education is crucial. It is more to be heard.

To you I pledge, at progress report that will finances, on-going projects.

Nickie and I are a strong term tough issues. We encouraged. We thrive challenge of the year to enthusiasm and innovation from us all, yet I also feel will offer enough diversity, and just plain fun that we can share.

For the past year, I have been actively involved in ASLCC. In my position as ASLCC Childcare Co-Op Coordinator, I assessed the needs of students for cost-effective childcare, then worked closely with the LCC administration on developing and opening a quality and affordable childcare co-op on campus.



**Franki Surcamp**

For the past year, I have also worked in the office of the Transitions to Success program for single parents and displaced homemakers. My work there, along with my being a single mother, has given me a real understanding of the issues and needs of student parents and returning students.

I feel that my work with the childcare co-op and Women's program over the past year has taught me a lot about what it takes to become an effective leader. I believe that open communication is crucial to good leadership. LCC students are a diverse mix of ages, racial and ethnic backgrounds, physical abilities, and lifestyles. I am strongly committed to making LCC a campus which understands and welcomes this diversity. A vote for Franki as President and Kim as Vice President will guarantee a team that is committed to hearing your concerns and working with you on them.

For the past year I have been involved in ASLCC. I have learned the function of Student Government. I have seen first hand the need for leadership in Student Government. I have attended meetings and become aware of the issues concerning students here at Lane.



**Kimberly Gallagher**

For the past year, I have worked hand and hand with Izetta in accessing the needs of students for assistance not funded through the Women's Center such as food boxes, and needs of homeless students.

Being a single parent, I realize the need of the students who fall through the cracks of the system. I want to make a difference here at Lane to make getting an education less stressful for all students. By voting Franki for president and Kim as vice president will guarantee a team that is committed to hearing your concerns and working with you on them.

It is with great pleasure that I welcome you to the 1992-93 Elections.

I feel certain that in the coming year Lane Community College will have a decisive impact on the economy, politics, and education. I that we will be able to standing and appreciating

In the wake of the economic climate and importance that we recall of the past and education prevent such intolerance

I intend to take step individual relationships a flourishing multi-cultural

I am not walking into in need of ACTION from this action your best call

## CORRECTION

An early edition of the ASLCC Voters' pamphlet used errant material in this space. This is the corrected material. The Torch apologizes for the few incorrect pamphlets distributed between 8 a.m. and 10:30 a.m. April 24.



Vincent Jones

Dear Students:

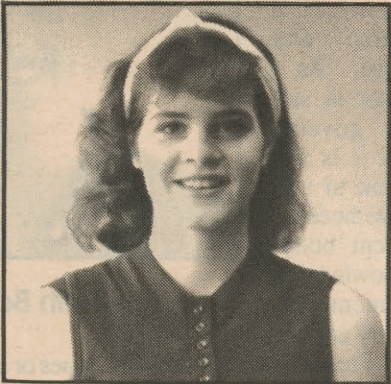
As your Vice President my first priority will be to serve all students in any way I am capable. My door will always be open to all of you. I have decided

to run for Vice President because all students of LCC need a strong voice that is willing to speak up for them. Vincent and I are very committed students, who believe in team work. Issues that effect us all need a committed team to make a stand and follow thought with them. We are more than willing to bend over backwards for you, once elected for the positions of President and Vice President of Student Government.

Upon returning from Washington D. C., where I attended the USSA Conferences as a representative of LCC Student Body, I was overwhelmed with excitement because of the knowledge and insight I gained. As a student activist and your new Vice President some of the projects I plan to be involved in are : working with the Cultural Director in planning the events of the Martin Luther King Celebration. Researching and finding a solution to stop sexual harassment of any form here on campus, working with OSPIRG on some of their projects. Develop a plan to get covered smoking shelters outside.



Nickie King



Shannon Fabry

My number one goal as Cultural Director will be to acknowledge, respect, and act on the special needs of each individual's culture while raising the awareness of the ASLCC.



Tony Rice

I see three tasks that is the foundation to the Cultural Director's title. 1) Martin Luther King Celebration takes a sizable amount of the Cultural budget and in turn, deserves a great deal of attention. I will insure ASLCC's honor as founder's of the celebration by being an active participant in the forming of the week. 2) Earth Day is an opportunity to organize with campus groups to promote the well being of Mother Earth. 3) I am also in favor of sponsoring education of ethnic minorities. I will bring film festivals that deal in bringing to light our respected heritages. I will also outreach in the area of club promotion. Thank you for your consideration.



K. JoAnn Wilson

As a participating student at LCC for nearly 2 years I have noticed a lot of issues that have been addressed, but no action has been taken. I feel I would be instrumental in resolving

these issues and seeing them put into action. Example:

\* High School students - some kind of funding for tuition.

\* Night students - Lack of access to facilities; these students pay the same tuition as day students, should have access to a hot meal.

\* Book-Store - On campus business should be cheaper.

I intend on making myself available to my fellow students and colleagues regarding any issues needing discussion and/or action.



Ginny D. Herriges



Melonie Rollin

I have traveled throughout the Orient and Mexico and have developed an appreciation for all cultures and peoples. As Cultural Director, I would work to bring a wide variety of quality events to our campus, working wisely within our budget.

CORRECTION

An early edition of the ASLCC Voters' pamphlet used errant material in this space. This is the corrected material. The Torch apologizes for the few incorrect pamphlets distributed between 8 a.m. and 10:30 a.m. April 24.

Design by  
Jeanette  
Nadeau

# SENATORS

**Balance-**  
The student body of LCC is diverse and unique. As a senator in student government it is important to recognize the entire student body, acknowledging all members, groups and issues. Presently, only particular cliques or student groups have been given the attention of student funds and government support at LCC. My desire in running for senator is to give all student groups, organizations and individuals equal support and an equal voice in student government.



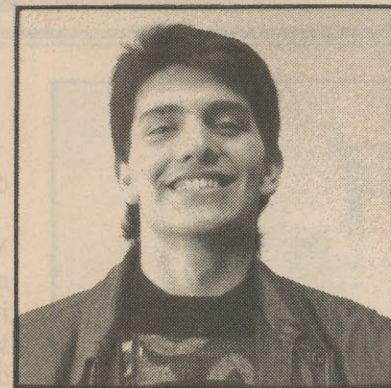
**Keith Ball**

There is a proposal in the Senate that would increase student fees. Most of the students at Lane Community College already have a tough time making it financially and don't need another expense. The role of a Senator is to be a liaison between the student government to the student body. I believe that the senators are accountable to the students and should listen to and act upon the voice of the students.



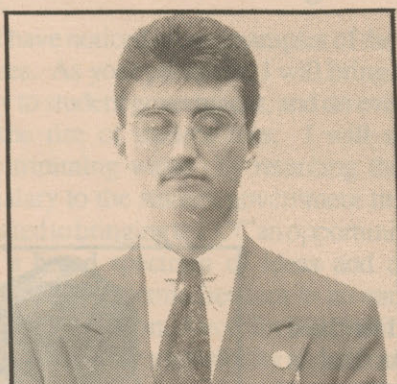
**Chris Browning**

Did you know that student fees have increased 140 percent in the past two years? I would greatly appreciate the opportunity to work with some of my fellow Senators to stabilize, and if possible, reduce some of these expenses. A few dollars of extra fees per student may not seem like very much, however, I believe that these rapidly growing costs have the potential of nickel and diming many LCC students out of a higher education. If elected, I would also be an advocate for the formation of a Disabled Students Committee.



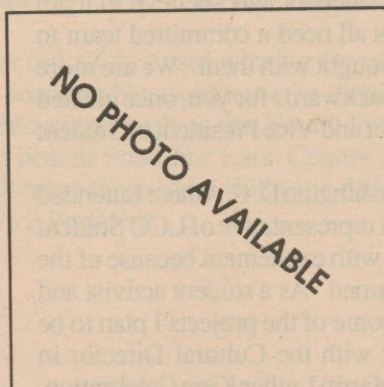
**J. B. Galan**

In this year I have completed several projects including a promotional in which I raised over \$1000 worth of prizes for the basketball team. If I am elected, I will continue my high level of service in the next year. Remember, vote for Jeffery Fernandes!



**Jeffery Dean Fernandes**

I would like to promote an environment of cultural awareness and positive feelings toward racial diversity. I would also like to open communications between ASLCC and the students to a larger degree.



**Larry G. Fourmet**

I think that everyone seeking academic improvement should have the chance to attend LCC at a reasonable price and I believe that all students have a right to have their opinions and concerns addressed by ASLCC representatives. I would like to bring integrity and hard work to student government and would appreciate your support. Thank you and please vote Galan for Senator.



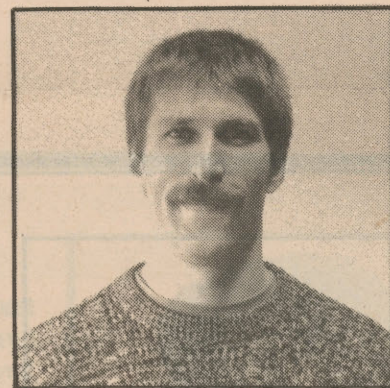
**Eirik I. Rude**

I, Jenny Fraser, am very interested in the student senate at Lane Community College. If elected as one of the senators, I would allocate funds to be used for student organizations and departments in a prudent and responsible manner. With my skills and talent, I will be able to represent the Associated Student Body at Lane Community College in a positive manner.



**Jenny Fraser**

As a Senator for the students at Lane Community College, I would do a good job of bringing responsibility and integrity to the position of Senator. I believe in representing all the students at Lane and I am not perusing this position for any one special interest group. I believe that Student Government needs to be more active at reducing student fees and being more accountable to all students at Lane. I would like to thank you for your vote for me in the upcoming election.



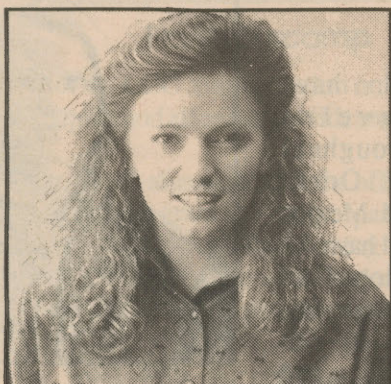
**Alan P. Schermerhorn**

Money is my platform! Of course money is not everything. But it is quite necessary in this world. If you are the typical penny pinching student then you have probably found the waste of money by the ASLCC shocking. Each year hundreds of thousands of dollars goes through the ASLCC budget. That's a lot of money! And yet recently they found it necessary to once again raise our incidental fees. I say this must stop. The student government must be held accountable for the formation of a reasonable and modest budget. If elected I shall make it my duty to deliver to the students of this school what they deserve; a government that serves the students, and not their own egos.



**Vida Ellins**

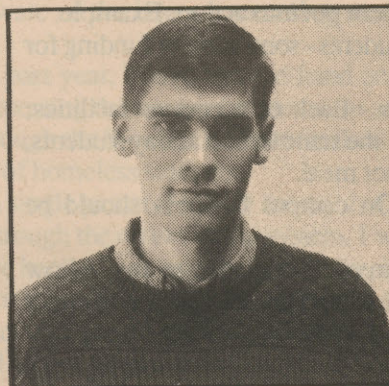
**STUDENT FEES**  
Do you know what are they for?  
Do you know where they go?  
Do you know how or if they benefit you?  
If you don't know, you are not alone.



**Constance Glencoe**

I, like most students, have been unaware of just where our student fees have been spent. My goal as senator will be to serve the best interests of the students and student groups of LCC by ensuring your student fees are spent in an accountable and beneficial manner. Also, I will work to be a link between student government and the students of LCC so that you will know how the things we do benefit you. You support the student government, you should know what it means to you.

Since I have been attending LCC, student fees have increased 240 percent and now there is a bill in the works that would increase them another 75 percent. Student government is responsible for disbursing the nearly half a million dollars that are raised by student fees every year.



**David B. Swift**

I want to participate in a student government that uses these funds to provide the greatest benefits to the greatest numbers of students, I want to be a link between you, the student, and your government; and I want to help ensure that your money is being spent wisely.

We live in an exciting, yet a demoralizing time — with challenges and opportunities, never before so vitally significant, beckoning us all to take action. Having faith in our individual potentials, I believe, we can make a difference in all aspects of life — working together, planning and making choices that will enrich us. Right here on the campus, we have an enormous wealth in the diversity of people, ideas and resources available to us — which should be used creatively and effectively, for the benefit of all.

I can offer to the Student Government in the coming year, the benefits of my life experience, having lived abroad and worked with many people of diverse backgrounds. Most importantly, are the deep values I hold in the belief of the unity of all races — the oneness of humanity. "The earth is one country and mankind its citizens."

I am most happy when serving constructively my fellow brothers and sisters, with dedication and joy in my heart. The ultimate purpose of learning and fulfillment is service to humanity.

# Students feel tension in El Salvador

by DEBORAH STOTLER  
Torch Lead Writer

"The fighting is over, but the struggle continues," is the rallying cry of many peasants in El Salvador.

From the moment LCC students Nick Velluzzi and Amanda Nichols arrived in El Salvador on March 20, until their departure eight days later, they witnessed firsthand the tension left behind after the comprehensive peace treaty signed on Jan. 16 in Mexico City formally ended the 12-year civil war between the right-wing government of El Salvador (ARENA) and its leftist foes, the Farabundo Marti National Liberation Front (FMLN).

The peace accords called for a nine-month cease fire which began Feb. 1. If adhered to, the accords will bring more democracy than the tiny Central American country has ever known.

Velluzzi and Nichols, along with 11 other Eugeneans, traveled to El Salvador as members of the most recent delegation of the Committee in Solidarity with the People of El Salvador's (CISPES).

Velluzzi says the CISPES delegation's threefold mission included gathering educational information for use in the US; and delivering "material aid" such as medical supplies, clothing, hygienic provisions, and cash to the peasants.

Along with a call for economic aid that supports national reconciliation in El Salvador, CISPES demands an end to all U.S. military aid.

Velluzzi says that military aid allows the "U.S. to call the shots." This creates a dependency situa-



Photo by Otto Deeds

## Amanda Nichols

tion which he says gives the U.S. "the right to subjugate the people and implement its policies."

And with death squad activities and other human rights violations still occurring, Velluzzi claims delays in the implementation of some accords has meant a death sentence for more than 60 Salvadorans.

On March 2, the day the peace accords called for the dissolution of the much feared Treasury Police and National Guard, Nanzario De Jesus Gracias was found dead in the office where he worked. Blindfolded, and with his hands tied behind his back, Velluzzi says the brutality of the murder suggests Gracias was killed by a death squad.

On the morning the delegation arrived, a march protesting the lack of investigation into Gracias' murder was wending its way through the streets of San Salvador, the nation's capital.

"At the march, two men wearing Treasury Police uniforms were spotted," says Velluzzi, a "clear violation" of the peace accords.

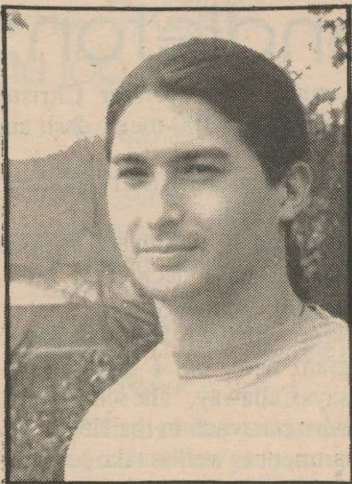


Photo by Glennis Pahlmann

## Nick Velluzzi

Prior to leaving Eugene, an orientation session designed to equip the delegation members for any and all "worst-case scenarios" didn't prepare Velluzzi for the "shocker" of observing from his room's streetside window 10 soldiers nonchalantly flaunting their M-16 rifles. Velluzzi says the soldiers always keep their hands "in a ready-to-fire position" on their guns.

Both Velluzzi and Nichols say that despite the multiple, unresolved conflicts between the government and the FMLN the Salvadorans' optimism about their future is remarkably durable.

"Once the war was over, (the peasants) knew they would win their rights," says Nichols. But, they also understand "that it takes time and hard work" to make their dreams of land ownership a reality.

On Wednesday, April 29, Velluzzi and Nichols will show a slide-tape presentation to Jerome Garger's Peace Studies class (Center Building, room 401). The class is open to all.

# Wellness Day to feature healthy mix of speakers

by JOE HARWOOD  
Torch Editor

You don't have to be sick or even mildly stressed to participate in the third annual Wellness Day, Wednesday, May 6.

Sponsored by LCC's Substance Abuse Prevention Program and the Wellness Committee, the event will offer a variety of seminars and discussions on both physical and mental health. Topics range from grief and loss, to AIDS, and will feature speakers from LCC and the community.

The day is divided into nine one-hour sessions so participants have the opportunity attend all, or just a few selected workshops.

Wellness Day is free of charge and open to the public. Location is 308-309 Forum Building.

The following is a tentative schedule for Wellness Day 1992:

- 8 a.m. Time Management -- Linda Pompel, Co-Coordinator, LCC Customized Training.
- 9 a.m. Levels of Intimacy -- Mary Ann Klausner -- Co-Coordinator, LCC Chemical Dependency Counselor Training Program.
- 10 a.m. Nutrition -- Loretta Plaa, LCC Instructor, Foods and Nutrition
- 11 a.m. Grief and Loss -- Neila Campbell, Private Eugene Counselor
- Noon -- Film, "Caring for Ourselves"
- 1 p.m. AIDS -- Britt Ellis, Instructor, Health and P.E.
- 2 p.m. Elderly Alcoholics -- Karen Howell, Interim LCC Substance Abuse Prevention coordinator.
- 3 p.m. Smoking Cessation -- Mary Stine, McKenzie-Willamette Hospital
- 4 p.m. Body Image -- Britt Ellis, LCC Instructor, Health and P.E.

## OCA continued from page 1

David Duke and the KKK. But I can stand in front of media cameras for 20 minutes and no one hears a word I'm saying."

According to a recent poll, the public is divided on the issue.

On April 11 and 12, a telephone poll commissioned by the Springfield News and KMTR TV, showed 39.5 percent of the 400 registered voters polled would vote against the anti-homosexual rights amendment; 34.5 percent said they would vote for it; 22.5 percent said they were unsure; and 3.5 percent said they didn't care.

Neet says the numbers would have been different if the poll hadn't been taken on a Sunday.

"A lot of voters who will vote for the measure were probably in church while the poll was being taken," Neet claims.

Morrisette says if the initiative passes it will cause serious repercussions for the city.

"It opens the door for all kinds of censorship," he predicts. "What's next? Magazines, books or newspaper articles?"

It will also put the city in the position to defend the ordinance in court battles which could cost a lot of money, Morrisette says.

On May 8, the Springfield News is sponsoring a debate between members from the OCA and people opposed to the initiative, at 5:30 p.m. in the Springfield City Council chambers.

Morrisette says he hopes Neet will be there.

"The OCA is fighting for something that's not even there," says Morrisette. "The fact is, human beings should not be discriminated against. Period."

"I don't care what those people do in their own bedrooms but they certainly don't deserve minority status," says Neet.

On May 19, the voters of Springfield will decide.

# Championships to be held at LCC

Lane Community College will host the 1992 Community College Forensics Championships, April 24-25, on campus. The debate portion of the tournament begins Friday at 8:30 a.m. and individual events at 2:30 p.m. Tournament information and locations will be posted in the cafeteria. LCC welcomes teams (listed below) from Oregon and Washington.

## Clark College

Director of Forensics:  
Orv Iverson

Jennifer Close  
Conrad Hackett  
Trayson Harno  
Beth Houston  
Bill Knight  
Jeff Markle  
Judy Mathison  
Chuck Miller  
Dayna Mink  
Carlos Perez  
Noah Stella  
Kim Strappazon  
Kim Triplett  
Stephanie Wolfe

## Spokane C.C.

Director of Forensics:  
Karin Hilgersom

Susan Ell  
Nikki Easterling  
Tonya Hunter  
Diana Bryant  
Sharon Hedlund  
Dave Waldman  
Lewis Weaser  
Jeff Wainwright  
Kimberly Paskey  
Sean Cafferky  
Lynda Wright  
Kenna Kae Elledge

## Lower Columbia College

Director of Forensics:  
Mike Dugaw

Heather Andrews  
Ivan Akesson  
Candy Coonz  
Jaime Colley  
JR Spain  
Jason Grieg  
Robert Walker  
James Penman  
Dave Bennett

## Grays Harbor C.C.

Director of Forensics:  
Lynne Lerych

Ruth Davis  
Josh Millson  
Mark Hidden  
Laura Chenoweth  
Kimberly Osina  
Kristin Dugas  
Robert Zachary  
Kevin Kogin  
Margret Jurasin

## Mt. Hood C.C.

Director of Forensics:  
Lawrence Dawkins

## Rogue C.C.

Director of Forensics:  
Mary Slater

## Clackamas C.C.

Director of Forensics:  
Frank Harlow

Sharon McGuffy  
Kelly Brennan  
Aimee Earnhart  
Ryan Hull  
Ted Huber  
Jeff Gates  
Dave Nash  
Heather Kline

## Lane C.C.

Director of Forensics:  
Barbara L. Breaden

Bryan Beban  
Christy Sheron  
Gabrielle Cordero  
Andrea Pasutti  
Shane Schaeffer  
Sylvia Yu  
Ranell Trantham  
Carrie Frye  
Herbie Kojima  
Delmer Melton  
Chris Browning

## Columbia Basin C.C.

Director of Forensics:  
Sallie E. Fisher

## Linn-Benton C.C.

Director of Forensics:  
Mike Ingram

## FREE 2 ROLLS 35mm Film

Try this Exciting New Film "While (this film) has sharpness and fine grain competitive with other films of its speed, its main forte is color reproduction. Nuances of color are held in the prints; You can see the difference between cherry red and tomato red."

Photographic Magazine  
Now you can try the 35mm film Photographic Magazine calls the best 200 ASA print film in the World! For Free. To introduce you, we'll send you two rolls Free. Fine grain, rich color, wide exposure latitude—perfect for everyday shots. Shoot in bright or low light—indoors or outdoors. And you can order prints, slides, or both, from the same roll—without the high cost of slide film! Try this remarkable film today.

SEND ME 2 FREE ROLLS  
Rush me two 20-exposure rolls of your highly acclaimed 35mm film, one each at 200 ASA and 400 ASA. Enclosed is \$2.00 for shipping. Limit: 2 rolls per household.

NAME \_\_\_\_\_  
ADDRESS \_\_\_\_\_  
CITY \_\_\_\_\_ STATE \_\_\_\_\_ ZIP \_\_\_\_\_  
Mail to: Seattle FilmWorks Elliott Bay at Pier 89  
P.O. Box 34056 Seattle, WA 98124-1056  
\*1991 Seattle FilmWorks Free film offer does not include developing. Process "SPW-XL" at Seattle FilmWorks with limited availability from other labs.

**The McKenzie**

**The KAVE 95.3 Presents:**

**2001 Space Odyssey**  
1968  
A visual feast that put SCI FI on the artistic level it belongs 4 days only

**Student Discount: Only \$1.50 w/ID.**  
Adults \$2.50. Seniors and alterable \$1.50.  
Kids 9 & under \$1.00.  
Support Your Local Theatre  
**McKenzie Theatre**  
630 Main St.  
(Downtown Springfield)  
747-8349

# LCC competes in Pendleton; may lose Callaway

by ROBERT CATALANO  
Torch Sports Editor

Steve Coxon and Brandon Foster led the LCC men's track team to a fifth place finish, and Shelby Voas paced the women's team in a 10-team meet at Blue Mountain Community College in Pendleton on April 18.

Coxon won the pole vault event and finished third in the 100-meter dash. Foster won the 100-meter high hurdles with a time of 15.55 seconds.

In other events, Rick Strubel finished third in the long jump, Dan Chapman placed fourth in the hammer throw and fifth in the shot put, and Brett Yancey ran fourth in the 800-meter.

Voas, one of two women on the LCC team, won the women's shot put with a toss of 37' 2 1/4" to beat her nearest rival by over a foot.

The other woman, LCC sprinter Christel Marklin, placed third in the 100-meter dash and fourth in the 200.

In other track news, Titan coach Larry Callaway may not be around next year.

The LCC Athletic, and the Health and Physical Education Departments have decided to hire a permanent replacement for Callaway.

"I've been working with the Adult High School Completion program here, but I don't have a master's degree," says Callaway. "The school wants to hire someone who can teach in the Health and Physical Ed. Department as well as take complete control of the track program.

"At this point, I'd like to be an assistant," Callaway adds, "But it depends on whether or not the new coach is an expert with sprinters and hurdlers. If he/she is, I don't know what my status will be."



Another long leap by a mighty Titan.

Photo by Mathew Auxier

## Cardinals and Reds predicted winners in NL

by ROBERT CATALANO  
Torch Sports Editor

Picking the winners in the National League divisional races this year may be as difficult as figuring which presidential candidate is least liked by the public.

### National League East

This is the closest race to call, but despite all the injuries to St. Louis Cardinals early in this sea-

son, I'm picking them as my sentimental favorite to win the division. During the first week of April the Cardinals lost three starting position players and one starting pitcher to injuries. However, this team's speed, pitching and great defense will help it hold on until the starters return. Look for good seasons from Todd Zeile, Rick Lankford, Ozzie Smith, and rookie Donovan Osborne.

The Pittsburgh Pirates are good enough to win the division, but the loss of Bobby Bonilla and the player fears of the salary axe falling will be too much for this team to overcome. The Pirates will miss Bonilla's team leadership, as well as 20-game winner John Smiley and top reliever Bill Landrum, who were let go by a front office which did not want to pay their substantial salaries.

If desire was all it took to win the NL pennant, the Chicago

Cubs would have done it a long time ago. They won't win again this year. The Cubs have a lot of potential, and a good mix of veterans and rookies, but this team hasn't had a winning tradition for 46 years. The only winner here is Ryne Sandberg who signed a contract recently for \$7 million a year.

The Philadelphia Phillies will wind up either fourth or fifth in 1992. An early season injury to Len Dykstra hurt their chances to move up, but an unsteady pitching staff and questionable defense will cause more problems than Dykstra's absence.

Dennis Martinez and the Montreal Expos are made for each other. Both have been counted out before only to come back to do better than expected. Martinez overcame an alcohol addiction to become a quality pitcher and the Expos, who usually do more with less talent than any other team in the NL, would be cellar-dwellers without him.

Speaking of the cellar, the New York Mets will finally return to their rightful place in history. Excepting newly-acquired Bobby Bonilla, and Howard Johnson, this team is a bunch of crybabies, primadonnas and potential Mike Tysons. To everyone else other than Mets

fans, this be a good team only because it's a loser and from New York.

### National League West

Most of the teams in this division made numerous personnel changes in the off-season, so winning the NL West may ultimately come down to which team improves itself the most.

The Cincinnati Reds acquired two quality pitchers in Tim Lincecum and Greg Swindell, and got rid of team problem Eric Davis. With Rob Dibble and Jose Rijo healthy, the Reds' pitching staff should be awesome. Injuries hurt the Reds early this season, but this team has enough depth to soothe the injury blues.

In 1991, the Atlanta Braves had a dream season. To repeat as N.L. champions, Terry Pendleton and Ron Gant need to have good years, and Dave Justice's recover from his back problems. If the Reds falter because of injuries, Atlanta's young pitching staff could lead this team to its second consecutive division crown.

The San Francisco Giants traded troublesome Kevin Mitchell away to Seattle and got three pitchers in return. Bill Swift and Dave Burba will be quality starters and Mike Jackson will probably replace Dave Righetti as the staff's closer before the 1992 season ends. The Giants have the best hitting infield in baseball, but need more offense from the outfielders if they are to challenge either the Reds or the

Braves.

The San Diego Padres acquired Gary Sheffield the day before the 1992 season opened and the move has paid off. Along with Fred McGriff, Tony Fernandez, and Benito Santiago, Sheffield should provide the Padres with plenty of offense. Andy Benes leads a pitching staff which is long on talent, but short on experience.

Even with the outfield of Brett Butler, Darryl Strawberry and Eric Davis, the Los Angeles Dodgers will be hard-pressed to fight for anything except third place. The pitching staff is not as settled as in past years, and the infield has more holes in it than downtown Baghdad. Tommy Lasorda won't need Ultra Slim-Fast to keep his weight down this year; a lack of victories will do as well.

The Houston Astros will bring up the rear. This team has a lot of young talent, but the front office is as dedicated to winning as the Pentagon is to cutting its budget. However, given a few years of experience, some of these players will be good enough to be traded to other teams who will not hesitate to pay them what they deserve.

The Cardinals will defeat the Reds in seven games to face Toronto in the World Series. If, by chance, Atlanta wins the West, it will return to the fall classic by defeating the Cardinals in six.

Confused? That's baseball.

### Birthright

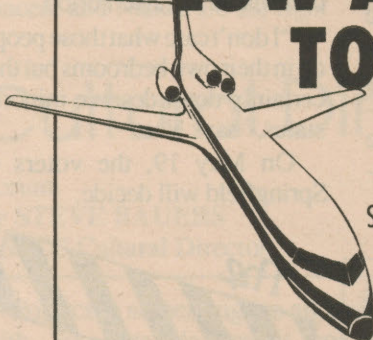
of Eugene

Free Pregnancy Testing  
"We Care"

Eugene Medical Building  
132 E. Broadway, Rm. 720  
Eugene, OR 97401

687-8651

## LOW AIRFARES TO EUROPE & ASIA



Special Student and Faculty Airfares  
Scheduled Major Airlines - No Charters  
50 U.S. Departure Cities  
75 Foreign Destinations

International Student Exchange ID Cards  
International Faculty ID Cards  
International Youth Hostel Handbooks  
Eurail and Britrail Passes  
Let's Go Europe Guides  
American Express Travelers Cheques  
Groups or Individuals

ASK ABOUT OUR EXPRESS ID CARD SERVICE  
"Celebrating our 34th Year in Student Travel"

For your FREE Student Flight Catalog mail this coupon to:  
INTERNATIONAL STUDENT EXCHANGE FLIGHTS, INC.  
5010 E. Shea Blvd., Suite A-104  
Scottsdale, AZ 85254 USA or Call: code here  
(602) 951-1700



Name: \_\_\_\_\_  
Street: \_\_\_\_\_  
City: \_\_\_\_\_ State: \_\_\_\_\_ Zip: \_\_\_\_\_



APRIL 24, 25,  
29, 30 MAY 1, 2  
8:00 P.M.  
Main Theatre  
LANE BOX OFFICE  
726-2202

Performing Arts Department

LANE  
COMMUNITY  
COLLEGE

GENERAL ADMISSION • TH-SA \$5 • SU-WE \$4 • SU-MAT \$3 • TU, WE KAVE NITE • SRS \$3.50 • KIDS \$2.50  
BARGAIN PASSES ON SALE NOW - 5 MOVIES FOR \$17.50, 10 FOR \$30, GOOD SU - TH

**STARTS TONIGHT! TWO WEEKS ONLY!!**  
Nightly 5:30 (\$3), 7:30, 9:30 • Sun Mat 3:30  
**A potent compilation in which art comes to terms with the rank and vile!**  
**The All Sick & Twisted Animation Festival**  
"More fun than a barrel of dead monkeys"  
-New York Daily News  
Coming: WHERE ANGELS FEAR TO TREAD  
BIJOU WATER NITE • Late Nite Adm. Tu-Sa \$3 • Su-We \$2.50  
Nightly 11:30  
STEVE MARTIN KEVIN KLINE  
DANNY GLOVER  
**GRAND CANYON**  
Coming: HAND THAT ROCKS THE CRADLE, BUGSY

**STARTS TONIGHT! Nightly 5:00 (\$3), 9:00**  
**"A most seductive movie! A magnificent visual and aural experience"**  
-Vincent Canby, The New York Times  
**VERONIQUE**  
SEPARATE ADMISSION REQUIRED:  
STARTS TONIGHT! Nightly 7:00 • Sun Mat 3:30  
Late Nite Show Nightly 11:00 (Late Nite adm)  
"The 'Citizen Kane' of alcoholic clown movies."  
-Betsy Sharman, The Boston Globe  
**Bohcat Goldthwait**  
"Perversely funny. It will be difficult to think of Bozo in quite the same way."  
-Lyle Serfaty, Chicago Sun-Times  
**Julie Brown**  
**Shakes the Clown**

# CLASSIFIEDS

CLASSIFIED ADS ARE FREE TO LCC students and staff, 15 word maximum and will be printed on a space available basis. All other ads are 15 cents per word per issue, paid in advance. The *Torch* reserves the right not to run and ad. Deadline for Classified ads is 5 p.m. Friday for publication in the following Friday's issue, NO EXCEPTIONS.

## FOR SALE

**BRIDESMAID DRESS** floral pastel. Size 6. Perfect for prom/graduation. \$75 OBO (was \$175). 345-4268.

**HELY-TECH** Rain jacket. Bright purple. Rarely worn. Medium. \$60 OBO (was \$125). Call Angela 345-4268.

**SELMER'S 1922 ALTO**, mint, scale, sound, rare front trill. \$2295. 1967 mark-6 tenor \$2895. 747-5213.

**FURNITURE**-full size bed \$50; 6 drawer chest 30 in. x 71.2 in. dark brown \$60. 344-2036.

**DOUBLE DOOR** and two drawer chest 50.4 in. x 35.2 in. Dark brown. \$60. 344-2063.

**MACINTOSH PORTABLE COMPUTER** 2/40 mb, internal modem, lots of software, ink jet printer. \$2250 OBO. 345-5282.

**USED KASTEL SKIS \$100**. Fair condition. Used once. Roche ski boots. \$50. Contact Robyn 342-3143.

**BLACK LEATHER PANTS**, 31" waist jacket size 38 both for \$295 Free vest w/ purchase 484-6122.

**REFRIGERATOR**- 16 cu. ft. white, clean, runs good. \$115. 747-8576 ext. 2164.

**TASCAM 244 PORTASTUDIO** 4-track cassette recording deck, new heads. \$600. call Daryl 343-5304.

**CASIO CZ.5000** synthesizer, 8-track recording, 32 voices (each one adjustable) \$500. call Daryl 343-530.

**SONY TRINITRON COLOR TV**. 17 inch, from 1977. Works fine, \$50. Call 937-3667.

**MACINTOSH PORTABLE COMPUTER** 2/20 mb. internal modem, lots of software, Kodak ink-jet printer, \$2500 OBO. 345-5282.

**APPLE IIe COMPUTER**, dual disk drive, green screen monitor. Word process software. Excellent condition. \$350. 344-8444.

**7/8 ROTTWEILER**-1/8 Boxer pups and full Rott pups, \$100 & \$200. Call Matt at 461-0614.

**14' CAB OVER CAMPER** \$200. 461-3910.

**NINTENDO**- barely used, 3 games, \$80 OBO. Ask for Darin or leave message 683-2468.

**GET READY FOR summer**. O'Brien Kneeboard. Excellent condition. \$70 OBO 345-3958.

**ROCKWELL "SAWBUCK"** Trim saw. \$175. Great for finish work. Call Darin 683-2468, leave message.

**HONDA CIVIC BRA & SKI RACK**. Fits 88-present civic. \$150 for both. Dennis 741-6833.

**GROW-LIGHT OUTFIT**. Large Ballast, Dayton air conditioner/timer. Only used once. Excellent condition. \$100 686-4483.

**LABRADOR RETRIEVERS** for adoption. Abandoned or abused dogs are re-trained for minimal fee. Susie Morill ext. 2475.

**KICKER 6x9 COAX SPEAKERS** w/2 crossovers and grilles. Used one week. \$150. 747-8595.

## HELP WANTED

**EARN MONEY READING BOOKS** \$30,000 per year income potential. Recorded Message Reveals Details. Call 801-547-3067 ext. 201.

**DENALI HAS OPENINGS** for people with darkroom experience. Compensation - workstudy - tuition waiver - SFE. Center 479 f.

**ALASKA EMPLOYMENT!** Find rewarding big \$\$\$ jobs on fishing-tenderboats, canneries this summer by reading the Alaska Employment Manual. Send \$8.95 today! Alaska box 5141 Eugene, 97405. 100% refund if not satisfied in 30 days.

**VOLUNTEERS** to collect petition signatures for Oregon Fair Share's Fair Tax Initiative on campus. 345-5282.

**CLOTHING EXCHANGE** needs donations of clothing - toys - household items - "Students helping students" P.E. 301.

## OPPORTUNITIES

**COLLECTORS!** \*Personally-signed star's photographs. \*Autographs. \*Star's home addresses. 6 issues \$6. Celebrities - P.O. Box 293 Eugene OR 97440.

**DENALI IS OFFERING** free training seminars for magazine production. See Bonita, Center 479 f for schedule.

**DO YOU DANCE**, play an instrument, or sing? Perform for Denali Finale! See Bonita Center 479f.

## SERVICES

**PERSONAL HOROSCOPES**- Daily or natal available. Fun, informative. Great gifts. \$3 - \$5. 747-3314.

**THE WRITING CENTER!** Mondays 9 a.m. - 7 p.m.; Tuesdays - Thursdays 9 a.m. - 5 p.m.; Fridays 9 a.m. - 3 p.m. Center 451.

**DENNIS STANKIE** will do your hauling and or yardwork. No project too large. 485-2444.

**FREE CLOTHES** toys, household items, at the Clothing Exchange. P.E. 301 "Students Helping Students".

**ASTROLOGICAL SERVICES** through Mark S. McNutt. 24 years experience. Individual readings and classes. 1-964-5341.

**SPANISH TUTORING** (Available every day). 998-3262. (998-2526 message phone).

**GRUPO DE APOYO** para Latinas que son victimas de Abuso Sexual. Miercoles 1:15- 2:15 Escuela Whiteaker- Centro de Comunidad 484-9791.

**WOMEN'S HEALTH CLINIC CARE** - Pap Smears, Birth Control - Pregnancy Testing. Confidential. Student Health, ext. 2665.

**VETERANS: EMPLOYMENT**, benefit info. See Dave Schroeder at the veterans office. Thursday from 9 a.m. - 11:45 a.m.

**BIBLE STUDY**: Thursday, 1-1:50 p.m. Math & Art 241. Sponsored by Baptist Student Union.

**DEMOCRATS UNITE**: Cast off apathy and activate politically the Democrat Club. Call 344-8444.

**FREE LUNCH** and conversation every Wednesday 12-1 p.m. Math & Art 244. Campus ministry.

**FREE LUNCH**: Thursdays, noon-1 p.m. Math & Art 130. Sponsored by Baptist Student Union.

## PSA

**REGISTER TO VOTE** April 28th is the last day to register for the Primary Election May 19th. Forms available at the Student Resource Center.

**TWELVESTEP MEETING** Alcoholics Anonymous Fridays Noon - 12:50 p.m.. Math/Art 247. Mondays Noon - 12:50 p.m. Math/Art 247.

**TWELVESTEP MEETING** Overeaters Anonymous Mondays Noon - 12:50 p.m. Apr. 217.

**TWELVE STEP MEETING** Codependents Anonymous. Wednesdays Noon - 12:50 p.m. Math/Art 250.

**TWELVE STEP MEETING** Narcotics Anonymous. Wednesdays Noon - 12:50 p.m. Math/Art 347

**TWELVE STEP MEETING** Alanon Tuesdays Noon - 12:50 p.m. Apr. 211.

**SUPPORT GROUPS ON CAMPUS** Alcohol & drug awareness, Mon. 1-1:50 p.m. Science 111. Ongoing recovery Goup, Tues 1-1:50 Science 111. Support Goup for "Affected Others", Wed. 1-1:50 p.m. Science 111. Eating Issues Goup, Wed. Noon - 1 p.m. P.E. 231. Alcohol and Drug Awareness Group, Thurs. 1- 1:50 p.m. Science 111. Adult Children (ACOA) support group, Thurs. Noon - 12:50, M&A 245.

**ALL STUDENTS**, faculty are welcome to meet Harry Lonsdale candidate for U.S. Senator, Sunday May 3, 12-6p.m. at Wayne Morse Ranch- Crest Drive Eugene. Music and refreshments are available, more info. 345-5580 or 485-8702.

## ALASKA SUMMER JOBS

Earn \$3,000+/month in Fisheries. Free Transportation! Room & Board! Over 8,000 openings. No experience necessary. Male or Female. For employment Program call 1-206-545-4155 ext. 1672

## ADOPTION!

Home by the bay filled with laughter and music, seeking a baby to complete our happy family. Loving stay at home mom, devoted professional dad and sweet adopted 4 year old daughter, can't wait for a new baby brother or sister to grow up with and to share songs, stories, travels, warmth, and love. Let us help you through this difficult time, encircle your baby with love and all the good things that life has to offer including financial security and the best education. Call our attorney, collect.

(509) 248-7220 or  
(509) 966-4283  
Ask for Sarah

## FREE

**FREE LUNCH**: Thursdays, noon - 1:00 p.m. Math/Art 241. Sponsored by Baptist Student Union.

**NEED HOME FOR "Boy"** 1 1/2 yrs old. Aus. sheppard/Lab mix. Affectionate dog. Great with kids. 345-7739.

**FREE CLOTHING** at the clothing exchange P.E. 301. Also need donation of storage units or dresser.

**COME CHECK OUT** the Clothing Exchange P.E. 301. We have free clothes for LCC students and their families.

**FREE KAYAK!** Fiberglass boat - needs slight repair. Call Dorothy at ext. 2656 or 942-9282.

## TYPING

**PERFECT WORD TYPING** service, professional, accurate. \$1/page and up. Laser prints available. Sequoia 942-4708.

**TYPING AND WORD PROCESSING** 65 cents double spaced laser page. Laser resume \$3. John 484-9648.

**TYPING** Fast dependable. 50 cents/page. Will check spelling, help you with grammar. 747-3314.

**WORD PROCESSING**. fast professional service, word perfect, draw perfect. Laurie 687-7930.

**THE WRITE TYPE** word processing, term papers, newsletters, flyers etc. Reasonable rates- Karen 687-2157.

**MELISSA'S FLYING FINGERSTYPING**. Fast affordable, professional. \$1/page. Call 747-8595.

## EDUCATION

**EXPAND YOUR IDEA** of a classroom, OSPIRG internships available now! Contact Dalene, LCC- OSPIRG, Center Bldg Basement.

**SCHOLARSHIP HELP** is here!! Computerized, guaranteed. FREE information. EDUCATION HELPS, 95159 Tumbow - 1, Junction City, OR, 97448.

## LOST&FOUND

**LOST: OPAL NECKLACE** somewhere at LCC. If found please turn in to Lost and Found. Reward!!

**PUPPY FOUND** near LCC 4/13. Call Paul or Angela 345-4268 to describe & claim.

## EVENTS

**CHESS PLAYERS**. Fri. 1-4 p.m. Main Cafeteria. All experience levels welcome.

**HUGE SALE**: Bake sale, garage sale, and car wash. Saturday/Sunday. Keg Tavern lot W. 11th.

**HOLY RODENT** live industrial music 6:30 April 26 Espresso Roma, Corvallis. 4 other bands at 7:00 p.m. \$3.

## AUTOS

'84 CHEVETTE \$500 OBO. Dependable. 461-3910.

'89 BLACK FORD TAURUS, 4 Dr. very clean. \$7000. 484-9931.

'70 BEETLE. Very Dependable. Including 2 sets of tires (one set studded) \$500. 485-0860.

'80 CAMERO z28. Cruse, ac, gas shocks automatic 69,000 original miles \$3250.00 746-2984.

'66 DODGE Plu. 35,000 on rebuilt slant six, straight, dependable \$600 OBO 688-5265.

'86 JEEP CHEROKEE Pioneer Air condition. New tires. Excellent condition. \$7950. 344-1807.

## MESSAGES

**SCHOLARSHIP INFORMATION** National Student Financial Aid Service, 345-8782.

**LOOK LIKE A MILLION** without spending a fortune. To see Avon brochure call Tami at 746-3762.

**GRANTS SCHOLARSHIPS**. Everyone qualifies. Call 342-8105.

Applications are now being accepted for

## 1992-93 Torch and Denali Editorships

### Torch Editor

The *Torch* Editor will serve fall, winter and spring terms of the 1992-93 academic year. The editor should have journalistic, management and organizational abilities, training, and/or experience, previous service on a high school, college or professional newspaper or other publication. He/she has control of the news and editorial content of the paper. The *Torch* editor hires staff members, directs policy, and manages the weekly newsgathering and production process. The applicant for editor must have completed at least six credits at LCC within the last 12 months. The editor must maintain or exceed a 2.00 GPA, can expect to work 30-40 hours per week, and will receive an average salary of \$400 per month for the academic year.

### Denali Editor

The editor of *Denali* selects and manages the 1992-93 staff, organizes the production schedule and has the final word on all matters concerning the magazine according to the Media Commission guidelines. She/he should have an understanding of the technical skills involved in producing the magazine; knowledge of desktop publishing; and a background in literature and art. The editor will be in charge of budgeting, fundraising, assessing staff progress and determining compensation for the editorial board members. He/she can expect to work 20-30 hours per week. The editor must be an officially registered student and must maintain or exceed a 2.00 GPA. The *Denali* editor will be paid a stipend not to exceed \$200 per term.

### Application Packets

Packets will be available at 3 p.m. on April 24. The deadline for returning applications is May 8 at 5 p.m. Application packets for the *Torch* editorship can be obtained from Pete Peterson, 205E Center Bldg. or Joe Harwood, 205C Center Bldg. Application packets for the *Denali* editorship can be obtained from Dorothy Wearne, 205D Center Bldg.; Bonita Rinehart, 479F Center Bldg.; or Jack Powell, 448A Center Bldg. The Media Commission will meet with all applicants on Tuesday, May 19, 1992 to select the new editors.

## Will you be at LCC Next Year?

Would you like to work part time for the  
Counseling Department as a  
Student Service Associate

## HIRING NOW

Applications due May 1  
Available from Career Center Counseling  
Dept.  
Julia Poole  
Center 450 B. Ext. 2512

# NEWS

## SUPPORT LEARNING DISABILITIES

Take advantage of all there is to offer. Learning Disabilities, a support group for people with varied learning disabilities, meets each Friday at 2 p.m. in Center 480. The free session will discuss learning disabilities, explore new resources available at LCC, teach new skills and techniques, explore new accommodations, and offer friendship and understanding. For more information, contact Linda at ext. 2444 or Doris, ext. 2071 in the Study Skills Center.

## EARLY REGISTRATION AT UO

Transfer students will be able to participate in early registration for fall term during the last two weeks of May. Only students who have completed the following criteria will be able to register early:

1. Officially accepted by the U of O Admissions Office.
2. Submitted official transcripts through winter term, 1992.
3. Paid the required tuition deposit of \$200.
4. Attended Early Registration Orientation on May 17, 1992.

Students applying before the fall term deadline date of May 15, but who do not complete the criteria above will register in July or August. Instructors are asked to help inform transfer students of the early registration opportunity. Interested students can refer to the Counseling Department, 2nd floor of the Center Building.

## 'CHILD CARE BASICS'

The American Red Cross and ASLCC's Child Care Co-op are hosting a snack lunch course on "Child Care Basics" on April 25, 9 a.m.-1 p.m., in the ASLCC Child Care Co-op. The course is free and will cover health, nutrition, child abuse, children with disabilities, safety, and community resources. The snack lunch is provided. For more information, contact Sue at ext. 2025.

## HELP SAVE A LIFE

The Lane Memorial Bloodmobile will be on campus on April 24 from 12-3 p.m. outside the cafeteria. Refreshments will be provided. Please call Student Health Services for an appointment at ext. 2665.

# BITS

## SEND YOUR CHILD TO CAMP

Are you interested in sending your child or children to summer camp but am a little confused as to what you can afford or what is right for the child? Roni Sue Shapiro and her referral service, Let's Make It Special, can help. Call (503) 484-5004 to tell her what you can afford and what your child's interests are and Shapiro will recommend a camp that is right for your child.

## "IMAGES OF WOMEN"

The Lane Community College Chapter of the American Association of Women in Community and Junior Colleges invites staff and students to a presentation and panel discussion of "Images of Women." Featuring staff members Joyce Salisbury, Susan Dunne, Donna Albro, and Kate Barry. The discussion will be on April 28, 1-2 p.m., in the Boardroom. Bring your lunch. Soft drinks will be provided.

## THE ART OF QUILTS

The University of Oregon Museum of Art presents "Kumiko Sudo: Expressive Quilts." This exhibition of silk pictorial quilts by contemporary Japanese-American artist Kumiko Sudo explores a wide range of technique and imagery. She uses a wide variety of eastern and western images in composition which expand the conceptual boundaries of the quilt as textile art. The free exhibit is open noon-5 p.m. every Wednesday through Sunday except state and university holidays on 1430 Johnson Lane. For more information, contact Ethel Weltman at 346-3027.

## LCC TODAY

The Media Arts and Broadcast Technology Dept. produces a weekly talk show called LCC Today. Every Friday in Forum 111 the Production Unit class hosts an informative show focused on LCC events and curriculum. Interviews are with faculty, staff, or students. Several LCC personalities are highlighted weekly. LCC Today can be seen MWF at 8 a.m., F at 11 a.m., and TuTh at 3 p.m. If you have any questions or comments, contact producers Carrie Ivey-Cone or Cheryl Larson at ext. 2473.

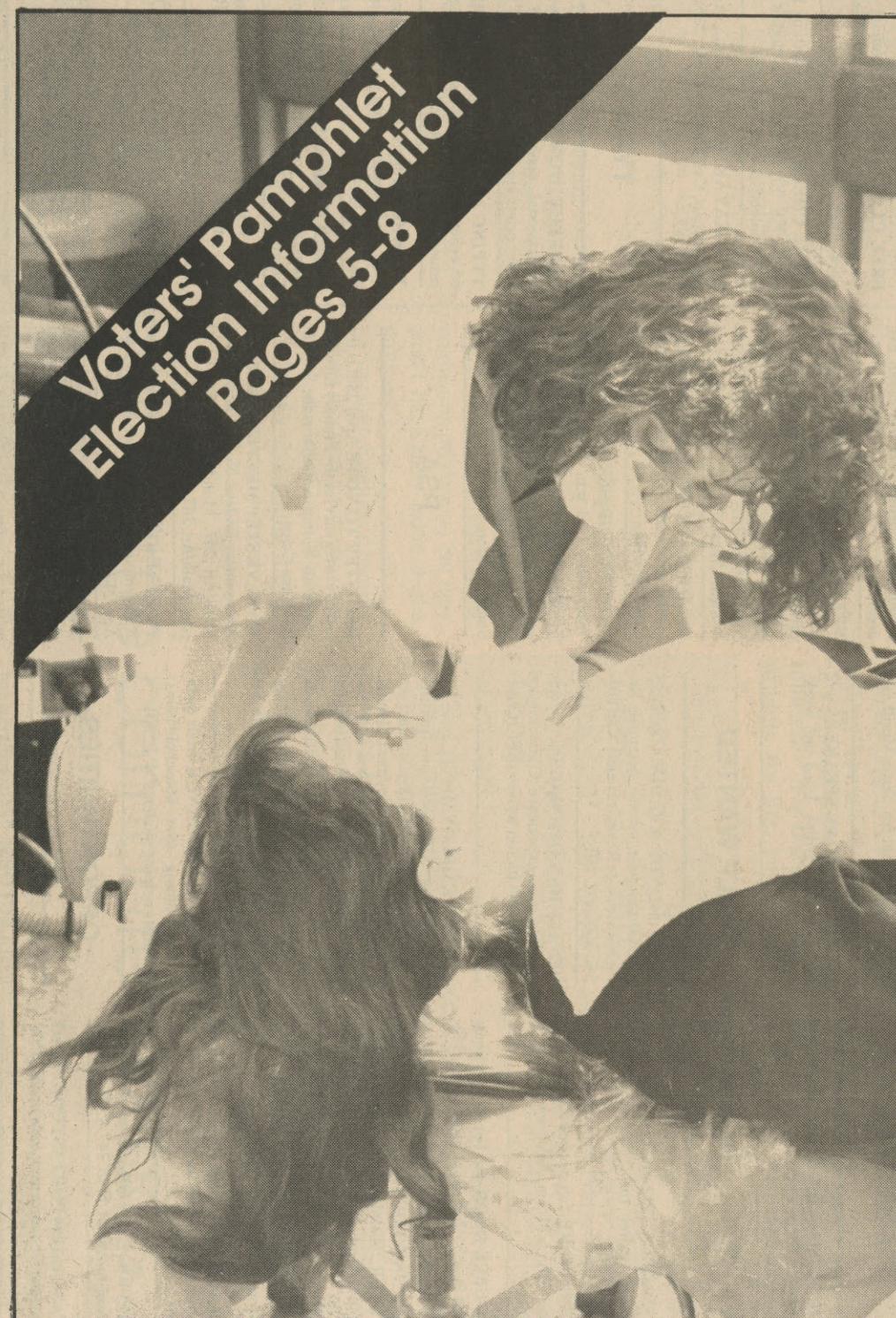
Lane  
Community  
College

# TORCH

April 24, 1992

Eugene, Oregon

Vol. 27 No. 24



## INSIDE:

Financial Aid  
update

Page 1

Graduation  
deadlines

Page 2

LCC Voters  
Pamphlet

Pages 5-8

Wellness Day

Page 9

Students in El  
Salvador

Page 9

LCC Track and  
Field

Page 10

## On the Cover:

Second-year  
Dental Hygiene  
Student Andrea  
Barnhart cleans  
5th grader  
Natasha Ash-  
worth's teeth. See  
story, page 3

Photo by Joe Harwood