

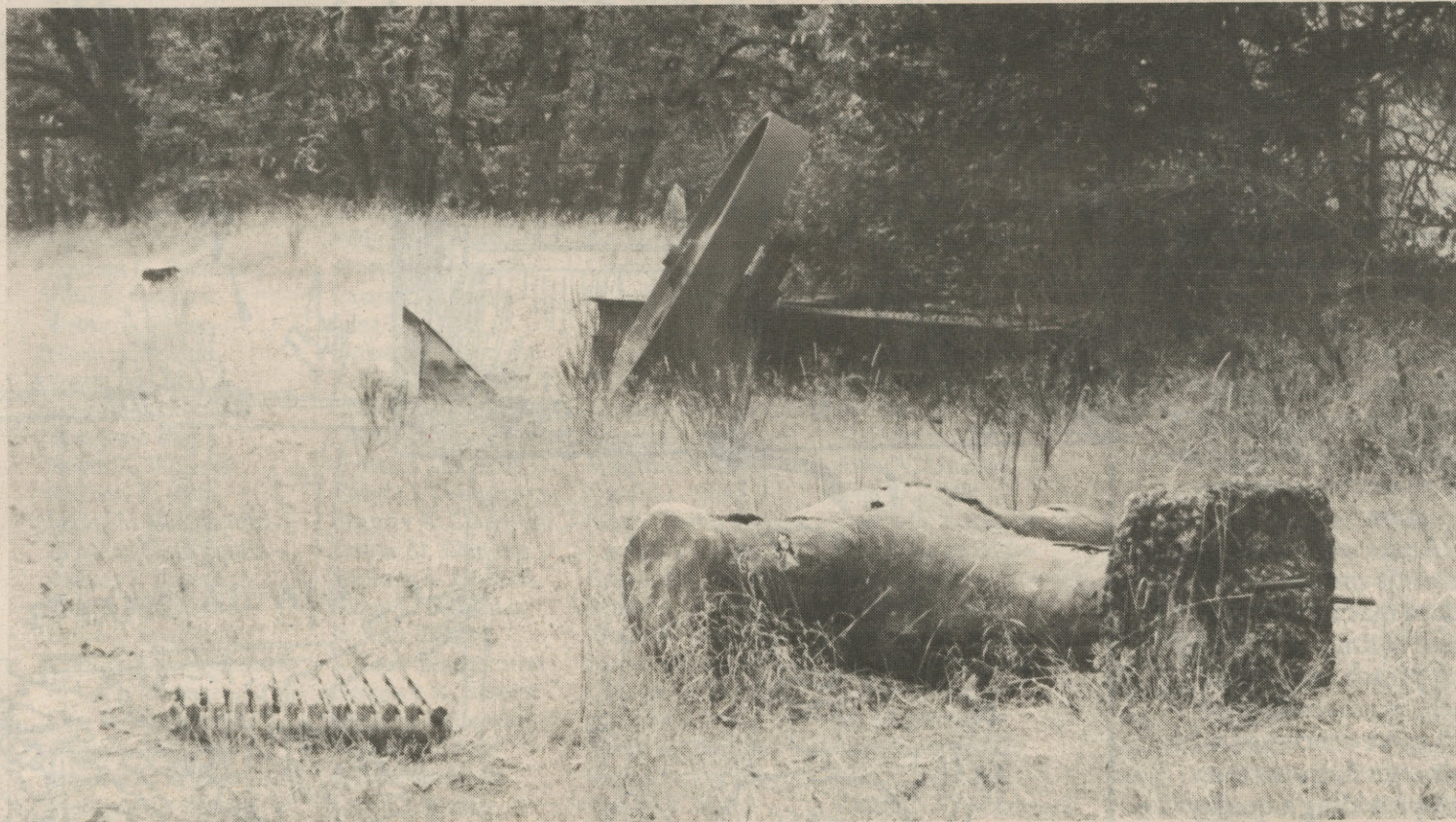
The TORCH



October 2, 1992

Eugene, Oregon

Volume 28 Issue 2



LCC's mystery dumpsite

PHOTO BY MICHAEL WOOD

Discarded sculptures, massive steel wheels and huge rotting beams are just part of the odd junk collection that graces the dumpsite. Located south of the main campus, few even know of its existence and no one admits to knowing how or where the trash came from.

'HELP!'

BY LARRY HAFTL

associate editor

If you feel threatened, call Security.

You can use one of the 23 red phones scattered around campus or dial ext. 2558 from a regular phone.

According to the LCC Security brochure, "If you are in a circumstance where you feel that your safety has been threatened, contact the Security Office and a Security Officer will be dispatched to you."

Director of Security Paul Chase says "... that even if someone has a problem in their personal life they think might be threatening, I urge them to come to the office and talk about it. We'll work with them."

Another service provided through Security is assistance starting your car. If your car won't start and it's after 5 p.m., call Security and a Campus Services staff person will be dispatched to help you.

Mitchell confirmed as ASLCC Vice President

Senate votes 10-0 for Mitchell as VP at leadership retreat

BY LARRY HAFTL

associate editor

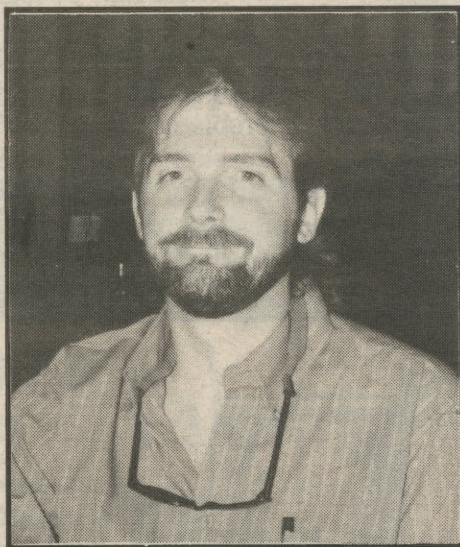
Architectural drafting student John Mitchell was confirmed as vice president by the ASLCC Senate during its Sept. 27 meeting. The office has been vacant since last spring when vice president elect Bonita Rinehart gave up her post due to ill health.

Nominated by ASLCC President Bill Hollingsworth, Mitchell attended the senate leadership retreat Sept. 25 - 27 in order to give senators and other officers a chance to meet him before making a decision.

During questioning by the senate, Mitchell said, "My primary goal is to help the students. Many of my friends didn't vote in the last election because they felt they had no voice in senate business. I would like to give them, and all other students who feel that way, a voice in what happens here at LCC."

When asked about leadership experience, Mitchell said, "I'm not sure if this qualifies but I've been a foreman on several construction crews and I'm the father of three children. I realize that I have a lot to learn in a short time but will focus on getting ready and do the best job I possibly can."

Mitchell was confirmed by a vote



John Mitchell

of 10 for, 0 against and 2 abstentions. He was sworn in at that meeting and assumed office immediately.

One of the main duties of an ASLCC vice president is to be the executive officer who investigates complaints against student government. Mitchell will make himself available to hear complaints by having regular hours in the ASLCC office, Center Bldg., room 479, and by sitting, on a regular basis, at a cafeteria table specifically designated for ASLCC.

Hollingsworth donates stipend

BY LARRY HAFTL

associate editor

Keeping a campaign promise made last spring, ASLCC President Bill Hollingsworth officially returned his \$5400 stipend to the ASLCC at the senate meeting held Sept. 27, 1992.

Honoring his request that the money be used for scholarships, the senate voted unanimously to give \$5000 to the honors fraternity Phi Theta Kappa. The remaining \$400 has not yet been allocated.

Hollingsworth stated, "I think it's an honor and a privileged to serve the students as their president. I would gladly do it for free. I already receive a full tuition waiver and felt the money should go to those who need it more. I promised to do this in my campaign and I keep my promises."

Bette Dorris, Phi Theta Kappa co-ordinator, says that she is excited to hear of the gift, but that it will take some time to determine award criteria. "It's possible that some of the scholarships will be available as early as next term," says Dorris.

Inside

Page 2 — Senate holds illegal meeting

Page 3 — Is institutional arthritis at LCC?

Page 4 — UO dorms for LCC students

Page 5 — Denali editor to make change

Page 6 & 7 — Welcome to Lane

Page 8 — President's list

Page 9 — Arts and Entertainment

Page 10 — Vice President's list

Page 11 — Omnium Gatherum & Classifieds

Staff editorial

Does LCC suffer institutional arthritis?

Institutional arthritis is a condition that prevents organizations from realizing their full potential.

This condition won't cause the death of an organization but it can mean the difference between truly excellent and just settling. Given the economic conditions that Oregonians now face, at LCC it can mean the difference between students getting a quality, meaningful education or just getting a diploma.

It comes from faculty members content to teach as they have always taught, rather than looking for more effective ways to communicate, using emerging technologies and upgrading their own understanding of their subjects.

It comes from administrative staff who are more concerned with making their own jobs easier than they are with being more effective, who resist the need for change and are more concerned with holding on to their turf, instead of optimizing available resources to maximize benefits to those they serve.

Institutional arthritis comes from students as well when they don't investigate the usefulness of the education they will receive before they get that education; when they are more concerned with getting a grade than with learning; or when they don't question the status quo because they feel it's useless to do so.

It even comes from Board of Education members who repeatedly raise the question of childcare for board members' kids, but not for students or the public who want to attend board meetings; who use

their positions to further personal agendas despite the negative impacts they have on others; and who place the interests of the business community above the interests of the students whom they were elected to serve.

The Torch staff unanimously agrees that LCC is one of the best educational institutions any of us has ever experienced, that the faculty and staff are often excellent and that the environment at LCC is far more nurturing and supportive than it is at the U of O or OSU. We unanimously agree that students at LCC have an excellent opportunity to receive a quality education.

At the same time, every one of us can tell stories of classes that were a total waste of time; of teachers who preach rather than teach; of administrative staff more concerned with their own domains than with providing a quality service; and of numerous hassles that impede the learning process.

For example, it's easy to dismiss Financial Aid's long delay in sending out award letters to factors like (1) a large increase in applications, or (2) the implementation of a new computer system, but that doesn't erase the hardships caused by the long delays. Why was this allowed to happen? Because people said "that's the best we could do?" Was it?

Every time people settle for "acceptable casualties" someone gets hurt. If we don't ask "why" often enough to get to the bare, often unpleasant truth, then we encourage *institutional*



arthritis.

Why does the job placement office place so few graduates? Why is off-campus Supervised Field Experience so hard to get in some programs? Why can't LCC meet the enormous demand for openings in the nursing program? Why are only three photocopy machines on the entire campus available to students? Why does the cafeteria food often look terrible and taste

worse? Why is there no honors program at LCC? Why are many vocational programs taught with inadequate equipment?

There may be logical answers to every one of these questions, but those answers don't solve the problems that generated the questions. Every time we settle for a logical answer instead of looking for and finding a solution we work against achieving excel-

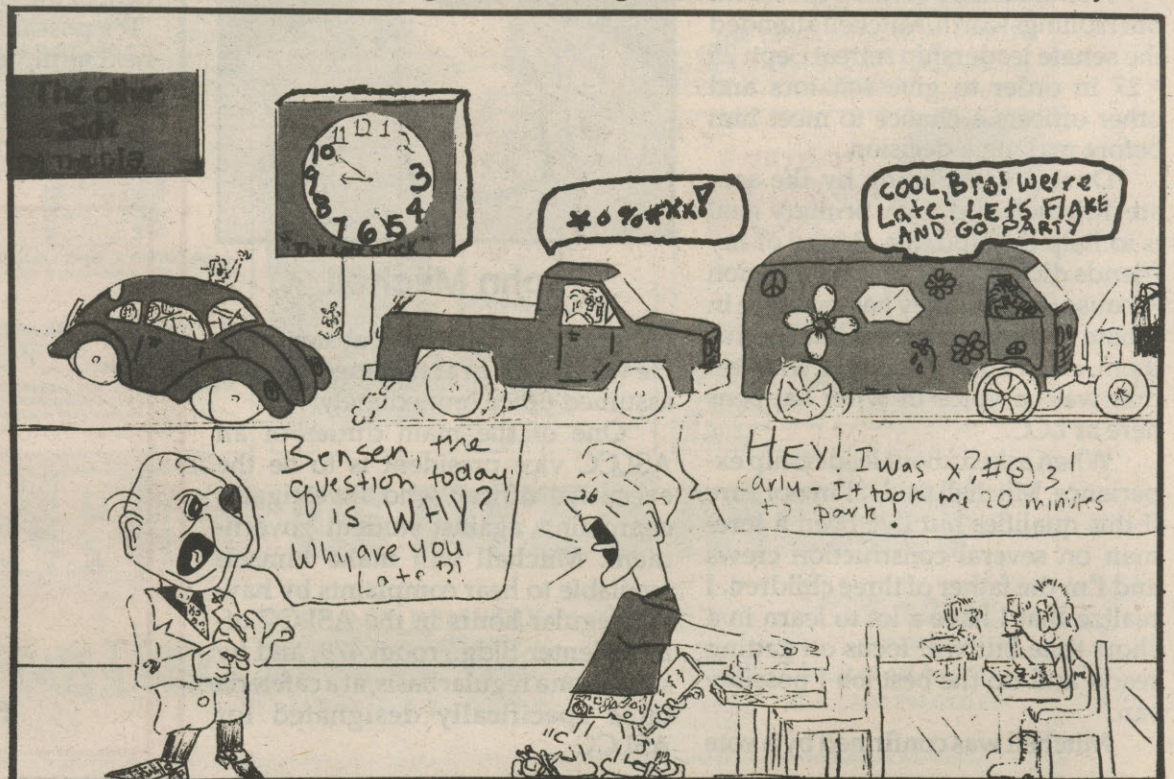
lence.

During this school year every one of us — students, staff, faculty and board members — will encounter situations that need improvement. If we do nothing, if we accept the status quo, we reduce our ability to achieve and promote *institutional arthritis*. It may not kill LCC but it certainly has the potential of reducing a leading educational institution to mediocrity.

The TORCH Staff

Editor Sonja Taylor
Associate Editor Larry Haftl
Production Manager Steve Vogel
Photo Editor Arthur Mason
Managing Editor Eric James
A&E Editor Luke Strahota
Assistant Photo Editor Michael Wood
Cartoonists Aaron Jamison, David Isabel, Devan Wilson
Production staff Brandon Dodge, Alan Powell, Brad Warren
Distribution Manager Brandon Dodge
News & Editorial Advisor Pete Peterson
Production Advisor Dorothy Wearne
Advertising Advisor Jan Brown
Advertising Assistant John Holt
Printer Springfield News

The Torch is a student managed newspaper, published on Fridays, September through May. News stories are compressed, concise reports intended to be as fair as possible. They appear with a byline to indicate the reporter responsible. Editorials are the opinion of the Torch Editorial Board. Forums are essays contributed by Torch readers and are aimed at broad issues facing the community. They should be limited to 750 words. Deadline: Monday, noon. Letters to the editor are intended as short commentaries on stories appearing in the Torch or current issues that may concern the community. Letters should be limited to 250 words and include the author's phone number and address. Deadline: Monday, noon. The editor reserves the right to edit forums and letters to the editor for grammar, spelling, libel, invasion of privacy, length and appropriate language. All correspondence must be typed and signed by the writer. Mail or bring all correspondence to the Torch, Room 205 Center Building, 4000 E 30th Ave., Eugene, OR 97405. Phone 747-4501 ext. 2014



Commentary

ASLCC Senate meets early, forgets the law

Oregon law requires meetings be announced in advance

BY SONJA TAYLOR
editor
AND LARRY HAFTL
associate editor

On Aug. 24 the ASLCC Senate held a two hour meeting. It's encouraging that our student representatives wanted to get an early start in their work. Unfortunately, they did not announce the meeting beforehand as required by ORS 192.640.

The law states: *Public notice required; special notice for executive sessions, special or emergency meetings.*

The governing body of a public body shall provide for and give public notice, reasonably calculated to give actual notice to interested persons, including news media - which have requested notice - of time

and place for holding regular meetings.

If an executive session only will be held, the notice shall be given to the members of the governing body, to the general public and to news media which have requested notice.

No special meeting shall be held without at least 24 hours notice.

Students were unaware of the meeting and therefore could not participate. Nor could they observe their student government in action. The law was written to insure such public access.

The law also says that interested news media must be notified so that ultimately the public can find out after the fact what happened. ASLCC Presi-

dent Bill Hollingsworth had the home phone numbers of *The Torch* editor and associate editor. He had been notified of his obligation to arrange for *Torch* attendance in order to be in compliance with the law. Because he did not, it calls into question the validity of all actions taken at that meeting.

Minutes from the meeting are available in the ASLCC office although they have not yet been approved as correct. Without public or media oversight they too become questionable.

According to those minutes Steve Wolff requested a loan from the Presidential Discretionary Fund but the request was denied because the fund

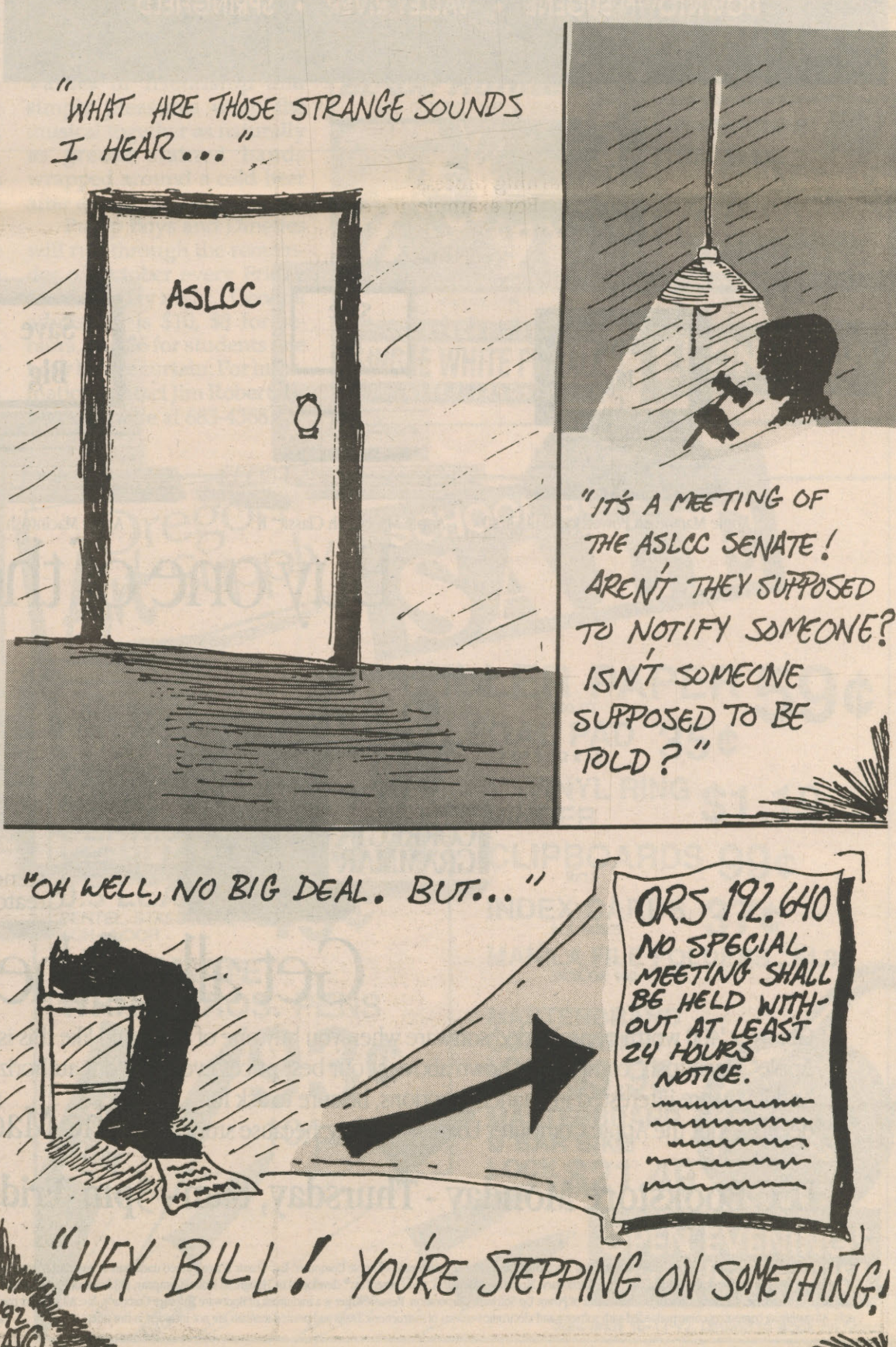
had not yet been set up. The senate agreed to hire Wolff as a computer consultant for \$150. He was also put on the computer committee in order to develop a networking proposal for ASLCC computers.

In other business the senate denied a request to fund a smoking shelter, agreed to participate in the United Way campaign by urging students to participate, and tabled a motion for \$300 to pay for speaker Larry Wharton's participation in the senate training and leadership retreat.

Those senators contacted by *The Torch* stated that they did not know their actions violated any laws and that, had they known they would have

insured proper notice was given. Under the law, ignorance is no excuse and therefore they share the same responsibility for their actions with Hollingsworth.

At the recent senate leadership retreat it was obvious the new senate is comprised of intelligent, thoughtful, concerned people. Any group new to elected office can make mistakes. We believe this mistake should be counted as a learning experience, and have confidence they will not make such mistakes again. We hope the student body will also give them the benefit of the doubt this time and allow the members of the senate to grow into their jobs.



GENIUS

is a checking account
that also earns interest.

Call 686-9251



"We Work For Our Members"

DOWNTOWN EUGENE • VALLEY RIVER • SPRINGFIELD

UO opens dorms to LCC

BY ERIC JAMES
managing editor

Denali, LCC's Literary and Arts magazine, will have a different look this year.

The magazine is at least 24 pages and published once per term during the Fall, Winter, and Spring terms. It is filled with art, poems, and stories from the community and LCC students and staff.

"The magazine expresses ideas and feelings," says Editor Jeanette Nadeau. "Some others submit just to get published."

Nadeau, graduate of LCC's Graphic Design course and a member of *The Torch* for three years, will use her knowledge to change the magazine.

"It will be a more substantial piece of art. Not a newspaper look-a-like magazine," she says.

The cover of *Denali* will be a different paper stock than the inside pages. This will be the main contribution to the new look.

"Another difference will be two feature stories added to each magazine about artists and writers," says Nadeau.

"Our goal is to go for quality," she says. "We want to change the past attitude which is sophomoric, and add more credibility so people will submit."

With improved quality in mind, Nadeau has hired experienced people as members of her editorial staff.

Lynn Rea, former *Torch* arts and entertainment editor, and Joe Harwood, former *Torch* editor, occupy the associate editor and editorial member positions.

However, there are still positions open for photographers on the staff.

The editorial board assesses and approves the poems, short stories, art, and photos which are due by Nov. 6, 1992, for fall term.

The *Denali* office is located in the Center Building, room 479F, ext. 2830.



Apple Macintosh PowerBook™ 145 4/40



Apple Macintosh Classic™ II

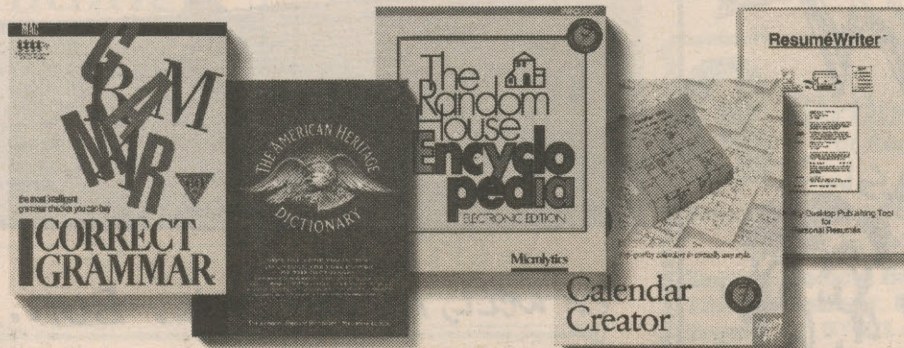


Apple Macintosh LC II



Apple Macintosh IIsx

Buy one of these.



Get all of these.

Get over \$400 worth of preloaded software when you buy one of the Apple® Macintosh® computers shown above at our best prices ever. And if you are interested in financing options, be sure to ask for details about the Apple Computer Loan. But hurry, because student

aid like this is only available through October 15, 1992 – and only at your authorized Apple campus reseller.

The Macintosh Student Aid Package.

LCC Bookstore Monday - Thursday, 8am - 5pm Friday, 9am - 4:30pm 726-2256

© 1992 Apple Computer, Inc. Apple, the Apple logo, and Macintosh are registered trademarks of Apple Computer, Inc. Classic is a registered trademark licensed to Apple Computer, Inc. PowerBook is a trademark of Apple Computer, Inc. The Random House Encyclopedia is a trademark of Random House, Inc. American Heritage Electronic Dictionary, Electronic Thesaurus, and CorrectText® developed by Houghton Mifflin Company, publisher of The American Heritage Dictionary and Roget's II: The New Thesaurus. CorrectText underlying technology developed by Language Systems, Inc. Calendar Creator is a trademark of Power Up Software Corporation. ResumeWriter is a trademark of Bootware Software Company, Inc. All product names are the trademark of their respective holders. Offer good on the Macintosh PowerBook 145 4/40 configuration only. All qualifying computers come preloaded with software and electronic versions of instructions. Disks and printed manuals are not included in this offer.

Denali editor initiates changes

BY ERIC JAMES

managing editor

Denali, LCC's Literary and Arts magazine, will have a different look this year.

The magazine is at least 24 pages and published once per term during the Fall, Winter, and Spring terms. It is filled with art, poems, and stories from the community and LCC students and staff.

"The magazine expresses ideas and feelings," says Editor Jeanette Nadeau. "Some others submit just to get published."

Nadeau, graduate of LCC's Graphic Design course and a member of The Torch for three years, will use her knowledge to change the magazine.

"It will be a more substantial piece of art. Not a newspaper look-a-like magazine," she says.

The cover of Denali will be a different paper stock than the inside pages. This will be the main contribution to the new look.

"Another difference will be two feature stories added to each magazine about artists and writers," says Nadeau.

"Our goal is to go for quality," she says. "We want to change the past attitude which is sophomoric, and add more credibility so people will submit works of art."

With improved quality in mind, Nadeau has hired experienced people as members of

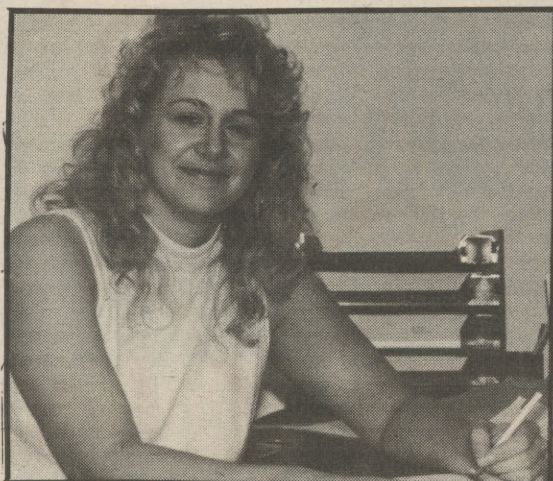


PHOTO BY ARTHUR MASON

Denali editor Jeanette Nadeau is looking forward to making changes in the magazine.

her editorial staff.

Lynn Rea, former Torch arts and entertainment editor, and Joe Harwood, former Torch editor, occupy the associate editor and editorial member positions.

However, there are still positions open for photographers on the staff.

The editorial board assesses and approves poems, short stories, art, and photos which are due by Nov. 6, 1992, for fall term.

The Denali office is located in the Center Building, room 479F, ext. 2830.

STUDENT MEDICAL INSURANCE

Available to all students taking 6 or more college credit classes, also available to their dependents.

Maximum medical expenses during policy year PER accident or illness	\$25,000.
Cash deductible PER accident or illness	\$50.00
Benefits paid at 80% after deductible	
Basic accident benefit pays 100% for first \$300 after deductible	

All conditions first manifesting prior to your coverage will not be covered.

Schedule of Premiums PER TERM

	STUDENT	SPOUSE +	EACH CHILD *+ DEPENDENTS
ACCIDENT ONLY COVERAGE (ALL AGES)	\$ 54.00/term	\$ 69.00/term	\$45.00/term
ACCIDENT & ILLNESS			
UNDER AGE 36	\$122.00/term	\$302.00/term	\$102/term
AGES 36 - 64	\$188.00/term	\$241.00/term	
AGES 65 & up	\$487.00/term	\$733.00/term	*maximum premium=3

Eligible dependents are the students spouse and unmarried children less than 19 years of age.

Pregnancy - covered as any other illness.

See brochure at registration or student health center

Policy underwritten by All-American Life Insurance Company
Served By:

Manley Administrative Services Co.
2350 Oakmont way, Suite 103
Eugene, Oregon 97401
(503) 485-7488

ASLCC CAMPUS CALENDAR

October 6

ASLCC Senate meeting will be held at 3:30 p.m. in the cafeteria.

October 1 thru October 13

Voter Registration- Pick up voter registration cards at the SRC, Photo I.D. desk, and the cafeteria.

Lane County voters booths are at these locations to familiarize voters with the voting process.

MAKE A DIFFERENCE REGISTER AND VOTE !

Voluntary Donations for the United Way of Lane County are being accepted at the SRC.

Have any cost saving ideas?

Student input is needed on Cost saving ideas for the college
Contact the ASLCC offices room 479 Center Building.

October 19

Members of the Oregon Shakespearean Company from Ashland are coming to LCC for two performances and one actors work shop.
Performances : 10 a.m. 12 p.m. in the main theater.
Workshop: 2p.m. in the Blue Door.

The New Vic Theatre Of London



If you like Monty Python, you'll love London's New Vic Theatre. Hiss, boo and roll in the aisles at their wild retelling of Chaucer's lusty tales. One of the most outrageous comedies ever staged!

Saturday, October 17 8 pm

HULT CENTER
FOR THE PERFORMING ARTS
687-5000

Are you interested in joining the Torch staff?

Come to the staff meeting
Monday Oct. 5 at 3:30 p.m. in the
Torch office, 205 Center Bldg.

Back to school

Let me out!

Could sardines squeeze any tighter? Center building lobby is a major area of high traffic.



Is this L.A. or

During the first few week of traffic fan out from LCC i



The X:50 e

A common sight all over campus next class. Most likely to occur 50



Enquiring minds want to know!

Two students explore this year's Torch, LCC's student run newspaper which is published every Friday.



A. or what?

week of fall term, lines of
in LCC in all directions



50 express

campus as students rush for their
occur 50 minutes before the hour.



???

Most often asked
question?
Can you tell me
where my class is?



Take my picture!

Both new and returning students
line up to get photo IDs



Back to Back

Two students relax between classes
and enjoy the last days of summer.

Photos by
M. WOOD

SPRING TERM, 1992 PRESIDENT'S LIST

Congratulations to the following students for earning a 4.00 GPA for 12 or more graded credits.

Spencer K. Adair
Shigeto Akaba
James L. Akins
Carol A. Alford
Matthew W. Allen
Nancy E. Allen
Anthony J. Anderson
Jill O. Andrews
William A. Andrews
Melissa J. Antone
Christopher A. Arrell
David M. Arrowood
Charles L. Bacon
Rocio Badger
Pamela J. Bahles
Keith K. Ball
Richard M. Ballini, II
Lori I. Barnes
Gary M. Barnett
Pamela S. Barnhart
Terry R. Bauman
Hannah J. Belanger
Greg T. Belknap
Thomas E. Benbrooks
Nataasha M. Berestoff
Tamara Bergmann
Walter E. Berry
Scott A. Besaw
Tracy D. Bettger
Kathleen M. Bevan
Jeanne E. Beveridge
Jonathan I. Beyer
Jacquelin J. Bickford
Brent M. Boehringer
Beth Bostrom
Cindy A. Boynton Burns
David B. Bradley
Stan D. Brawley
Gary L. Brotherton
Richard C. Brown
Steven M. Brown
Debra L. Byrd
Clyde W. Cameron
George W. Casdorff, II
Byron M. Case
Kimberlee J. Challis Roth
Jessica D. Chanay
Quaen Quan Chen
Shing Jye Chen
Kenneth W. Chester
Lai Meng Chew

Dean H. Churchill
Paul D. Clark
Jennifer A. Clason
Amie J. Clemens
Michael K. Coleman
Tori T. Combs
Mary C. Comstock
Robert A. Consentino
Donna E. Constantine
Janice L. Cooney
Nicole Cooper
Mary E. Corning
Christina Cowger
Kenneth W. Cox
Denise M. Crane
Kenneth Cromwell
Stewart E. Cross
Clinton J. Cruthers
Tyrone E. Czikkall
Hugh E. Dack
Steve A. David
Charles C. Davis
Donna M. Davis
La Vonne Davis
David L. Dier
Peter C. Dilcher
Desmond Distant
Joe K. Donald
Petra C. Doring
Marti J. Dorsey
Stephen C. Downey
Nitya B. Dvrant
James A. Dykstra
David A. Edelstein
Michael D. Edmunds
Howard E. Edwards
John O. Englehart
Harvey R. Epperson
Justin R. Eschbacher
Benjamin A. Estep
James W. Evans
James W. Feazell
Alan G. Feldmayer
Lynn A. Fetherstonhaugh
Deanna L. Finn
Janie S. Fischetti
Wade R. Flagg
Lori Ann Fletcher
Tim J. Fletcher
Eugene M. Flores
Andrew M. Foelker

David C. Foster
Colin B. Fralich
Leigh M. Freeman
Paul F. Fults
Jorge B. Galan
John E. Galetzka
Barry C. Galloway
Steve A. Garboden
Carl L. Gardner
Jeffrey A. Gardner
Rachel E. Garger
Michelle L. Garrett
Daniel R. Garriott
Jewel A. Gaston
Lindie A. Gilliam
Dan G. Gilmore
Patricia S. Ginter
Ron E. Glaspey
Matthew C. Glencoe
Kim J. Glenn
Shirley K. Glover
Fran I. Goode
Shari L. Gorden
Roderick E. Gouin
Molli J. Griffin
James E. Guilford
Todd G. Guy
Jon M. Haas
Larry Haftl
Jeanette A. Haller
Roy W. Hankins
Nancy A. Hargiss
Laura A. Harper
Henry D. Harris
Jerry L. Harrison
Martha Jo Hartley
Trevor L. Harwood
Genne L. Hasek
Rene F. Haynes
Larry A. Hendrick
Leona K. Henderson
Andrew H. Hengel
Jamie Sue Hernan
Jorge D. Hernandez
Terry W. Heykamp
Jerry L. Hicks
Frank J. Hills
Darrin R. Hirte
Jim Hixon
Travis M. Hoffman
Terry L. Hope

David A. Hopkins
Melissa A. Horner
John K. Horstman
James B. House, Jr
Debra L. Humphrey
D. Reese Hutcheson
Michael S. Hutcheson
Warren L. Hutcheson
Brent L. Hysell
Kazuhiko Igarashi
Megumi Inoue
William R. Isbell
Claude L. Johnson
Mark A. Johnson
Nancy F. Johnson
Nicola C. Johnson
Vincey D. Johnson
Allen H. Jones
Carol L. Jones
Tadashi M. Jones
Naoka Kanaga
Kevin M. Kayes
Dann R. Kevvy
Richard A. Kernutt
Marth J. Kersh
Diane M. Kesey
Cindy Y. Kilfoy
Nathanial D. Kimble
Lawrence G. Kirkwood
Martin T. Klein
Michelle L. Knight
William L. Kohler
Oki Kudo
Rachel P. Kueht
Dee A. Lachance
Rich R. Lambson
Crea W. Lancaster
Erik E. Land
Heather E. Land
Sandra R. Larson
Mark L. Lasater
Graham E. Lawrence
Carolyn K. S. Lehman
Kimberly A. Lemelin
Steven P. Lemelin
Steve M. Lemmon
Mark S. Lindgren
Matt H. Lindle
Carl Loeffler
Christine M. Long
Matthew D. Longtin

Richard M. Mac Beth
Serenity Maestas
Jennifer M. Manczak
Mary F. Maricle
Dora E. Marroquin
Karlene A. Martin
Joel A. Mason
Shoko Masumoto
Gloria L. Mathieson
Samuel A. Maynard
Michael S. Mc Cowen
Helen S. Mc Geehan
Linda J. Mc Gill
Katherine M. Mc Hugh
Lorri L. Mc Intyre
Jason C. Mc Krola
Linda E. Mc Nurlin
Chris J. Melotti
Athena A. Meltzer
Shaun C. Merchant
Ronald J. Merro
Gayle L. Mitchell
Dawn E. Montgomery
Steven L. Moreland
Teresa L. Morgan
Bernard S. Morris
Joanne M. Morrow
Fredrick E. Moullet
Lynn W. Mulligan
Karen I. Myers
Ayumi Nagata
Dennis T. Nagel
Randy E. Nelson
Amanda E. Nichols
David R. Norton
Thomas R. O. Shaughnessy
Shinya Ogawa
Soichiro Oka
Alfred L. Olmstead
Lisa R. Page English
Enita P. Park
Michael C. Parker
Angie J. Parsons
Sherry S. Paulson
Bruce H. Payne
Corey S. Pearson
Audrey F. Pecor
Tom R. Peters
Virginia E. Petersen
Terry L. Pierce
Virginia J. Pilaczynski

William L. Price
Michael J. Rager
Craig A. Rawls
Janice L. Reed
Jessica R. Reicher
Daryl W. Reister, Jr
Fred C. Rentz
Kristine I. Reynolds
Boyd C. Rice
Robert E. Richards
Katrin Ridge
Alisa R. Riel
Fred Rigel
Gregory A. Robben
Elihu H. Roberts
Richard P. Roberts
John P. Rodewald
Katheryn D. Rodriguez
Michael E. Ronczyk
Alicia A. Rooke
Ronald A. Ross
Bryan E. Royce
Cindy A. Rubash
Julie G. Ryan
Ralph F. Ryan
Michael H. Schilling
David C. Schiltz
Kelly R. Schmidt
Susan L. Schmidt
William O. Schrempf
Meredith A. Seeber
Majeska Seese Green
Eric A. Seitz
Ira D. Self
Sherry L. Shaeffer
Nancy L. Sharp
Michael K. Sheppard
Ayumi Shimbukuro
Patrick C. Simms
Jeff A. Sindt
Lerah J. Skeele
Thomas R. Slyter
Clement E. Smith
James M. Smith
Marjorie R. Smith
Maxine L. Smith
Robert Soans
Michael A. Spetter
William H. Spicher
Diane K. Sprick
Susan A. Stainbrook

Rhonda M. Steele
Greg Stender
Jewell L. Stevens
Pamela J. Stevens
Michael M. Steward
Robert J. Stirling
Suzanne Stone
Claude J. Stubbs
Tammy L. Sudduth
Anthony D. Suire
Curtis R. Summers
Shannon K. Sumner
Christina Svarverud
Joy W. Szmania
Cynthia L. Terry
Lauren E. Terry
Kenneth A. Tomberlin
Steven Tristano
Joseph A. Trozelle
Cheryl A. Uzelac
Rory B. Wade
Roger C. Wadkins
Gary D. Wagoner
Nancy L. Wakeman
Michael L. Walmsley
Robert L. Walters
Monica J. Walton
Robin L. Walton
John A. Ward
Robert A. Watson
Robert O. Wear
Dean A. Weathers
Dieter Weller
Jeremy D. Westover
Ty Wheatley
Leslie M. Wheeler
Mark T. Whitlock
Faith L. Whitten
Michael A. Widjojo
Irma J. Willey
Gweneth E. Willis
Gary L. Wilson
Charles B. Witham
William C. Wollen
David J. Womack
Kwok Keung Wong
Wade D. Woolard
Hiroko Yamada
Heather E. Young
Curtis G. Zook
Eddie N. Zulyevic

ARTIST'S SUPPLIES

SALE

25% OFF

DRAWING PADS

CANSON and STRATHMORE



683-2787
720 East 13th Ave., Eugene
UPSTAIRS IN THE UNIVERSITY CENTER BUILDING
8:30-7:00 Mon. - Fri. 10:00-5:30 Sat.
12:00-5:30 Sun.

SKETCH BOOK

8 1/2x11
BLACK BOUND BOOK

\$6.99

25% OFF

GRUMBACHER PRETEST OIL PAINTS

WINSOR & NEWTON WINTON OIL PAINTS

ARCHES

1992-1993

WATERCOLOR PAPER \$1.99 ea

140 lb



STRATHMORE
RECYCLED
DRAWING
PADS
ALL SIZES

\$2.00 OFF

COUPON EXPIRES 10-11-92. LIMITED TO STOCK ON HAND.



683-2787
720 East 13th Ave., Eugene
UPSTAIRS IN THE UNIVERSITY CENTER BUILDING
8:30-7:00 Mon. - Fri. 10:00-5:30 Sat.
12:00-5:30 Sun.

USE THESE COUPONS and SAVE MONEY!

OPEN EVENINGS and WEEKENDS!

Sale ends 10-11-92. Limited to stock on hand.



683-2787
720 East 13th Ave., Eugene
UPSTAIRS IN THE UNIVERSITY CENTER BUILDING
8:30-7:00 Mon. - Fri. 10:00-5:30 Sat.
12:00-5:30 Sun.

NEWSPRINT

18 x 24 reg. \$4.95

Pacific First Bank

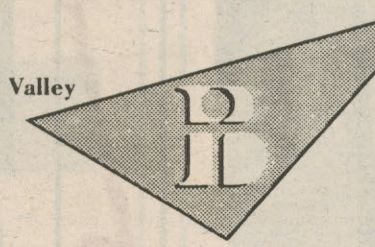
Savings Bank, Member FSLIC

STUDENT LOANS

AVAILABLE NOW

- Full GSL's for students attending half time or more
- \$833.00 minimum
- No account required
- No appointment necessary

FOR MORE INFORMATION CALL 465-8000
or just stop by M-F 10-5 to talk with one of our student loan representatives
1100 Willamette Street



Sun Valley Jackson Hole
Yellowstone

Salt Lake Valley

WE'RE THE CENTER OF A LOT OF ATTENTION


Would you like to live and work near a world-class recreation area? If so, you need to look into a career at Bannock Regional Medical and Geriatric Center. Located in Pocatello, you would live a short drive from not one, but three great recreation spots.

The Pocatello area features:

- World Class Fishing
- Stable economy
- Hot springs nearby
- Water sports

- Idaho State University
- Affordable housing
- Low crime rate

If you're graduating and will be a RN, LPN or professional clinician contact Tom Brownlee at Bannock Human Resources, (208) 239-1480 to learn about the benefits of living in Southeast Idaho



BANNOCK
REGIONAL MEDICAL & GERIATRIC CENTER
601 MY MORIAL DRIVE
POCATELLO, ID. 83401-0001

VHA

Musical comedy embodies life's simple pleasures

BY LUKE STRAHOTA
arts and entertainment editor

"Down here, we got one one moral we live by: 'work won't kill you, but worrying will,'" says the man with the patch on his shirt that says "Jim."

You have just entered the world of "Pump Boys and Dinettes," this month's musical comedy at the Actors Cabaret of Eugene.

The performance focuses on a day in the life of six people, four mechanics and two waitresses, letting the audience in on their hopes, lives, loves, heritage, and way of life through 18 theatrically performed songs ranging from country, melodies, blues, and rock.

"Pump Boys and Dinettes" began in the summer of 1981 with performances around Manhattan, later moving to Broadway where it received a Tony Award nomination as Best Musical of 1982.

In the Eugene production, Roger Emmert, who plays pump-boy Jackson, performed in the West Coast premier of "Pump Boys and Dinettes" for Mainstage Theater. He takes the spot light on "Mona," a rock-a-billy song about a "gum-poppin,' beboppin,' heart-stoppin,' dime-store dream" cashier at Woolworths.

Rhetta Cupp is played by Eugene actress, Debi Farr. In "Be Good or Be Gone" she asks Jim which is more important - fishing or their relationship.

Jim Monroe makes his acting debut as Jim, the narrator of the story. Monroe uses his experience as a guitar player and singer to deliver the warm "Mamaw," an ode to Jim's grandmother. The tender song deals with aging, moving on, and experiences growing up in her house.

Jami Teran plays Prudie, the other Cupp sister. Breaking away from the sassy, flirtatious southern girl persona, she sings "The Best Man," hoping to find the perfect man she never could find in the small town.

Michael Watkins, who plays L. M., performs two solo songs. The bluesy "Serve Yourself" tells the tale of a woman who "gets him under her hood and slammed him down, whose tires aint' all full, and if she needed her tank full, she better serve herself better than she served him." Referred to as "the lover-boy" of the pump boys, L. M. reminisces about his first love of country music in "The Night Dolly Parton was Almost Mine." She was charmed by his farmer tan, she called him by his name (after she read it off of his shirt) and held his hand, inviting him to her bus.

Eric Freeman, who plays the part of Eddie, is the shy member of the Pump Boys. His facial expressions and one liners help the show maintain its comical flow.

The remainder of the songs are mixtures of Pump Boys and Dinettes singing and dancing together, bringing to light the neighborly attitude



PHOTO BY ARTHUR MASON

Pump Boys and Dinettes cast members (left to right) Jami Teran, Jim Monroe, Debi Farr, Michael Watkins, Roger Emmert and Eric Freeman perform the musical number, "No Holds Barred" at the Actors Cabaret of Eugene.

the two groups share.

What compells the viewer is the simplicity of the work. Values of friendship and simple pleasures wrap the musical together as naturally as grease stained hands wrapped around a cold beer after a hard day.

Pump Boys and Dinettes will run through the remainder of October every Friday and Saturday night. General admission is \$10, \$8 for seniors, and \$6 for students one hour before curtain. For information contact Jim Roberts or Mark Langlie at 683-4368.

GEN ADMISSION TH-SA \$5 • SU-WE \$4 • SU MAT \$3 • TU, WE KAVE NITE • SRS \$3.50 • KIDS \$2.50
AIR CONDITIONED! BARGAIN PASSES ON SALE NOW - 5 MOVIES FOR \$17.50, 10 FOR \$30, GOOD SU - TH

Nightly 7:00, 9:30 \$5 ALL SHOWS -
SORRY NO DISCOUNTS OR PASSES
Sun Mat 4:00

HARRISON FORD
BLADE RUNNER
THE DIRECTOR'S CUT

BIJOU LATE NITE • Late Nite Adm Th-Sa \$3 / Su-We \$2.50 • BIJOU LATE NITE • BIJOU LATE NITE

Nightly 11:45

BRIDGET FONDA
SINGLE WHITE FEMALE
JENNIFER JASON LEIGH

Nightly 11:15

ENCINO MAN

PG



Eugene marimba band Kudona will perform from 11 a.m. to 1 p.m. on Oct 2 on campus as part of The ASLCC's cultural events calendar.

ASLCC scheldues variety of musical events at Lane

BY LUKE STRAHOTA
arts and entertainment editor

A diverse mixture of entertainment has been scheduled this year by Melonie Rollin, ASLCC cultural director for 1992-93.

Musical groups will perform around campus, give students a chance to hear free entertainment and hopefully, says Rollin, "open them up to what LCC has to offer."

• On Friday, Oct 2, Eugene's Kudona, a 10 peice marimba band will from 11 a.m. to 1 p.m.

(SEE EVENTS ON PAGE 10)

Oregon Art Supply
683-2787
720 East 13th Ave., Eugene
UPSTAIRS IN THE UNIVERSITY CENTER BUILDING
8:30-7:00 Mon. - Fri. 10:00-5:30 Sat.
12:00-5:30 Sun.

SCHOOL SUPPLY SALE

FILLER PAPER 59¢
100 CT

LEGAL PAD 35¢
50 CT 8 1/2 x 11

1" VINYL RING BINDER \$1.19

CLIPBOARDS 99¢
9x12

INDEX CARDS 37¢
ALL SIZES

MANILA FILE FOLDERS...\$4.98
BOX OF 100

MASTERBRAND COMBINATION LOCK \$3.95

MASTERBRAND U BAR BIKE LOCK \$21.49

OPEN EVENINGS and WEEKENDS!

Sale ends 10-11-92. Limited to stock on hand.

DENNISON HIGHLIGHTERS 47¢

0.5 LEAD 49¢
PENTEL, STAEDTLER, KOH-I-NOOR

PAPERMATE WRITE BROS. PENS 93¢
10/pak

(EVENTS CONTINUED FROM PAGE 9)

• On Oct 14, Green House, a Eugene band with members from LCC will perform rock violin and saxophone incorporated into the sound.

• Nov 18 brings the Eugene reggae band Roots Rengade.

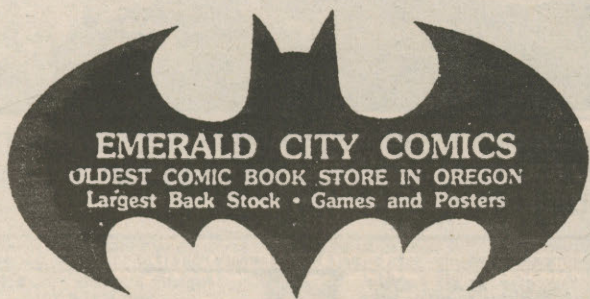
More outside shows will be scheduled as the term progresses.

Rollin would like to incorporate different blends of music this year that would range from Celtic, ballroom, chamber, reggae, and pay tribute to NASA, the Native American Student Association by holding drum/dance

exhibits and pow-wows.

"I'd like to get the students more involved by showing them what we have to offer. This way, we can integrate students to the classes. Bring them to ball room class, maybe they'll come to some of the pow-wows. That's what we're here for, to get students involved," says Rollin.

Students interested in performing can contact Rollin at 747-4501 ext. 2335 or bring a demo tape of your band for her to the ASLCC office located on the fourth floor in the Center Building room 479.



EMERALD CITY COMICS
OLDEST COMIC BOOK STORE IN OREGON
Largest Back Stock • Games and Posters

Discount Subscription Service for New Comics
Cash Paid for Old Comics and Games
770 E. 13th • (503) 345-2568
Other Location: Nostalgia Collectibles
527 Willamette St. (503) 484-9202

Welcome to LCC

Campus Ministry

242 Center Building

747-4501 ext. 2814

We're here for you!

1992-93 Events!

- Effect of Gamma Rays on Man-in-the-Moon Marigolds
- A Christmas Carol
- Diary of Anne Frank
- Electronic Artistry
- Six Characters in Search of An Author
- Little Lulu
- Vocal Jazz Concert
- Evening of New Plays
- Faculty Dance Concert

Great student discounts on main theatre events 726-2202

4000 E. 30th Ave. Eugene

LANE
COMMUNITY
COLLEGE

NEW CLUB

LCC's Multi-Cultural Center is forming an African-American Students Union. Anyone interested in joining is encouraged to drop by and sign-up. Meetings are held Wednesdays from 1 p.m. - 3:30 p.m. in the Center Bldg. Room 409. For further information contact Umar at 747-4501, ext. 2276 or 741-8475.

AN LCC STUDENT COULD WIN \$250

The Western Association of Student Employment Administrators (WASEA) is sponsoring an exciting contest for students to create a new logo for the association. Any student attending a WASEA member's institution is eligible to enter an original design for a WASEA logo to be used on letterhead and for promotional purposes.

The winning logo will earn its designer a \$250 cash award from WASEA. The deadline for entries is December 15, 1992. A panel of judges will choose the winning logo at the WASEA conference in April, and the winner will be notified shortly thereafter.

Contact Joan Adams, Job Placement Office, 303 Forum Bldg., Ext. 2326 for entry forms and information.

STUDENT AMBASSADORS NEEDED

The High School Relations Office is recruiting for "Student Ambassadors" for 1992-93 to represent LCC in the district high schools and to lead campus tours. If you:

- have completed at least one year in Lane college credit classes (at least half-time enrollment)
- will be returning to LCC this year (at least half-time enrollment)
- are outgoing
- are positive about your LCC experience
- have received your high school diploma or GED within the last 3 years,

We invite you to pick up an application in the Admissions Office, or call Shan Titus at 747-4501, ext. 2688. Application Deadline: October 5, 1992.

WRITING CONTEST

The Writing Center, The English Department and The Office of Institutional Development is sponsoring a Writing Contest in connection with "April is Community College Month". The theme is My Light-Bulb Experience With Learning. Describe when, why, and how the light bulb went on for you about the importance of learning and the value of an education. Tie in this life-changing moment to your experience at LCC. About 500 words, typed or word-processed, double-spaced.

There will be \$300 worth of prizes with the top prize being \$100.

Pick up entry forms at The Writing Center across from Center 451. Deadline for Submission is February 1, 1993. Open to all LCC students.

Classifieds

STUDENT AMBASSADORS needed to lead tours and visit high schools. Must have received diploma or GED within last three years. Apply in admissions office by October 5, 5 p.m.

TYPING AND WORD PROCESSING 65 cents double spaced laser page. Laser resume \$3. John 484-9648.

USED NINTENDO GAME boy and accessories. All or part 686-2044 Joan Ryan.

'86 ESCORT, POWER, 5

speed, sacrifice \$2100 Free-way Motors 747-5395.

FROST FREE PENNCREST refrigerator, freezer top, olive green, real buy at \$115. 344-1583, 345-1615.

CRUISE SHIPS NOW hiring - Earn \$2,000+/month + world travel (Hawaii, Mexico, the Caribbean, etc.) Holiday, Summer and Career employment available. No Experience necessary. For employment program call 1-206-545-4155 ext. C6070.

INTERNATIONAL EMPLOYMENT Make money teaching English abroad. Japan and Taiwan. Room & Board provided. Make \$2,000-\$4,000+ per month. Financially & Culturally rewarding! For International Employment program and application, call the International Employment Group: (206) 632-1146 ext. J6070.

FLU SHOTS at Student Health- \$8.00, Oct 2-Dec 4.



Birthright
of Eugene

Free Pregnancy Testing
"We Care"

Eugene Medical Building
132 E. Broadway, Rm 720
Eugene, OR 97401
Phone 687-8651

HELP WANTED
MINUTES RECORDERS
City of Eugene
Hourly range:
\$7.58 - \$11.26

Records and transcribes proceedings at meetings of various City boards, commissions and agencies. On call flexible hours.

CLOSING DATE:
Sept. 25, 1992. Obtain application at Human Resource and Risk Services, 777 Pearl St., Rm 101, Eugene. AA/EO

The New "Safety Lock" Massage Table



- Hardwood Adjustable Legs: 25" to 35"
- Portable & Lightweight: 29 to 33 lbs.
- Automatic Setup

Shown with optional face rest

\$199 Easy-to-Assemble Kit
\$249 Partial Assembly
\$299 Fully Assembled

255 Davidson St.
Cottage Grove, Or 97424

STRONGLITE

Pheasant Park Apartments

NOW RENTING AND TAKING APPLICATIONS!

- Beautifully landscaped grounds
- Laundry facilities
- Playground
- Tanning salon
- New recreation room
- And more!

1 2 3 BEDROOM
as low as

\$335

CALL NOW FOR MORE INFORMATION

STOP BY 475 LINDALE N. SPRINGFIELD

747-5411

SPRING TERM, 1992 VICE PRESIDENT'S LIST

Congratulations to the following students for earning a 3.55 to 3.99 GPA for 12 or more graded credits.

Star Adair	Lori K. Childers	Carmen R. Gretzon	Effie D. Kendall	Mary S. Miller	Sara K. Reed	Jeannette G. Sumpter
Donald F. Addison	Heather L. Chilson	Denise Grollinger	Shawna M. Kenyon	Tina M. Miller	William D. Reeder	Jean Sun
Fatimah Al Abdulaali	Daniel Christensen	Ryan S. Haldane	Nicole M. Kerins	Andre A. Montalvan	John B. Reising	Delia L. Surroz
Catherine H. Anderson	Emilya Chua	Gregory Hammers	Ong Kar K. Khalsa	Carol Monteverde	Kimberly S. Renken	Lynette R. Swinehart
Jeff R. Anderson	Jeff G. Churchill	Gary S. Hanamoto	Julie V. Kievith	Kristie L. Montgomery	Robert L. Rice	Janis M. Switzer
Surianti Angkasa	Karin R. Clarke	Kiyomoto Hanashiro	Mark D. Kirk	Michael A. Moore	Joy D. Rinkle	Tracy A. Taggart
Donald R. Antram	Charan J. Cline	Martin D. Haniuk	Lostein L. Kirkpatrick	Steven J. Morgan	Elena A. Robinson	Paula C. Tendick
Kinuyo Arakaki	David S. Cohen	Andrea L. Hardy	James B. Klenke	Scott L. Moschkau	Tiki L. Roby	Katsushige Terada
Russell R. Arch	Lisa M. Coke	Mike K. Hargrove	Jennifer J. Knight	Hernando Munoz	William N. Rodgers	Jamina J. Terrazas
Sharon Archibald	Sandra J. Conner	Larry G. Harmon	Arthur W. Koepsell	Robert D. Murray	Johanna D. Roeske	Stephanie L. Tieskie
Kevin D. Arrington	Frank R. Corzine	Renee Harris	Kanako Koido	Robin N. Myers	Lesa S. Rowlett	Paul A. Tiller
Ka Yee Carrie Au Yeung	Noah M. Couture	Jon W. Hartwell	Leslie A. Kowalewski	Derek R. Nadvornick	Edwin E. Rust	Julie K. Trad
Dale L. Aurand	Jesse L. Coy	Cynthia A. Harvey	Mary La Brasseur	Eri Nagaishi	David P. Ryan	Quoc Tran
Jennifer R. Auxier	Julie L. Crane	Jason D. Hasinsky	Lacey A. La Fayette	Masako Nakatani	Ivy K. Ryan	Marilyn A. Tripp
Michael R. Baird	Carol Crook	Tanaga Hasjim	Thomas D. Lake	David C. Newman	Rachel A. Sailor	William W. Trunkey
Karol-Lee A. Baker	Richard C. Cupples	Gregory S. Hawley	John K. Lancaster	Takahide Niimura	Takahiro Sakakibara	Amy L. C. Tsui
Ryan J. Baker	Melanie K. Davidson	Kenji Hayashi	Jennifer L. Lance	Donna K. Nirei	Michael G. Samuelsen	Lois J. Tullar
William A. Baker	Roy A. Dawson	Adam C. Healy	Douglas G. Landrum	Michele A. Nugent	Mary C. Sayles	Ryan E. Turner
Daniel W. Ball	Gaelle De Tassigny	Timothy M. Heaton	Marcee J. Lang	Kelly K. O'Sullivan	Renee L. Schmidt	Maria Uquillas
Billy D. Barkelew	Sheldon R. Dealy	Geri L. Heideman	Steven G. Langerman	Hiroshi Ogawa	Trisha K. Schmidt	Catherine A. Utter
Daryl M. Barnes	William Deskin, Jr	Katharine M. Heiser	James A. Larson	Brian K. Okken	Cary S. Schneider	Jerry L. Vanaman
Andrea G. Barnhart	Arwen J. Despain	Damon L. Henry	Bob P. Latham	Greggory V. Oleson	Stephen R. Schuler	Victor P. Vian
Paul R. Bartlett	Laura G. Dicus	Billy L. Hensley	David J. Lauch	Ted A. Ooyevaar	Tanya R. Sciarretta	Emily J. Vidal
Debra E. Bauer	Nisa M. Dietz	Lavonne C. Henze	Andrew D. Lee	Tiffini J. Orendorff	Shelby D. Seale	Patricia A. Vieira
Mark A. Beagle	James T. Dillon	Annette K. Hepner	Sandra R. Lee	James S. Ortlief	Marie L. Seidel	Thomas C. Ward
Sherrill A. Berg	Ralph D. Dinnel	Philip J. Herbert	William T. Lein	Yoko Osaka	Alissa G. Shelley	Jessi I. Watkins
Linda J. Bickers	Charles D. Doggett	Tommy Hernandez	Autumn N. Liebes	Kelly E. Peacock	Mikael D. Shields	Justin T. West
Bluegrass Biggs	Darrel Doggett	Ginny D. Herriges	Wee Boon Lim	Bradley W. Perkins	Raymond S. Shields	Lana S. Whiddon
Robin K. Bilinski	Cynthia Doolittle	Mayumi Hibino	Julie A. Lindsay	Paul J. Perkins	Takashi Shinohara	Wendy Wibowo
Kristine K. Bixby	Chad O. Dougherty	Daniel L. Hise	Josh D. Little	Angela M. Peterson	Paula K. Simmons	Adam J. Wiesberg
Jerald H. Blacksmith	Brandy K. Downhill	Minh Thanh Hoang	Debra D. Lockhart	Catherine R. Peterson	Roxanne T. Simpson	Lori L. Wike
Larry A. Blacksmith	Lester M. Duncan	Darla J. Hochhalter	Erik J. Lookabill	Chris B. Peterson	Amy Lee Smith	Durel T. Wiley
Stanley J. Blanck	Barbara L. Dussell	Edward A. Hodge	Christopher B. Loomis	Heather D. Peterson	Charles R. Smith	Julie D. Williams
Jody A. Bleisch	Mary L. Edwards	Richard D. Hofer	Mark H. Luther	Martha L. Peterson	Edward M. Smith	Lynette J. Williams
Erika L. Boehland	Ja Ann Ekland	Wade E. Hopkins	Brandon E. Maahs	Phoebe Peterson	John B. Smith	Jeffrey M. Wilson
Kimberly D. Boehland	Kyle B. Elmenhurst	Hideto Horage	Becky L. Manwill	Jim C. Petzold	Maizy R. Smith	I Kay Wing
Bryan L. Bonner	Gregory A. Emery	George D. Horton	Jackie B. Martin	Edward J. Plouffe	Melissa D. Smith	Mary E. Winkeler
Cari D. Brandsma	Yvonne Endersby	Traci M. Hoyt	M. M. Martin	Lloyd L. Plueard	Shaw C. Smith	Lisa M. Wojda
Diana L. Breeden	Becky R. Engle	Sarah M. Hughes	Sachiko Matsuda	Nikki M. Potter	Teresa M. Smith	Michael L. Wright
Jennifer L. Brodhagen	John I. Erickson	Sonya Humphrey	Karl T. Maxon	Susan J. Prock	Theodore H. Smouse	Yoko Yamada
Matthew D. Brooks	Larry R. Evans	Nancy R. Hunt	Keith D. Mc Cormack	Nigel Pung	David E. Snyder	Jennifer E. Yentz
Betty J. Broom	Sarah E. Evans	James Hutchinson	Alexis Mc Innis	Clayton W. Queen	Donna L. Sower	Trina L. Young
Julia A. Brown	Shirley J. Falls	Moriyasu Ikehara	Ronald S. Mc Whorter	James Rackley	James A. Spinder	Cherie S. Yung
Harry T. Browne	Christofer Farnworth	Perry E. Ingraham	Emily L. Merckling	Jeff S. Ramsey	Garland O. Sprick	Kathryn Zepp
Ryland C. Bryant	Krista L. Farris	Blake W. Ironside	Donald V. Messick	C. Shannon Rardin	Bryn M. Stuart	Michael Zimmerman
Peggy E. Buck	Joanne M. Farset	Grant G. James	Christine R. Mihaloew	Roger R. Raven	Rhonda Studenroth	Anissa S. Zotos
Edward T. Bunnell	Angela M. Feasey	Julio A. Jauregui	Brenda L. Miller	Maria B. Reader	Yee Mei Suen	Carrie L. Zuniga
Terry J. Burchell	Jamie Fikki	Jill M. Jensen				
Traci J. Burleigh	Sandhya R. Fisher	Eric S. Johnson				
Elizabeth A. Campbell	Vicki S. Fisher	Pamela A. Jolly				
Richard T. Campbell	Johnnie Fleetwood	Johnnie E. Jones				
Serene J. Campbell	Patti J. Fort	Mark A. Jones				
Tonya R. Cantonwine	Joseph L. Franco	Ray D. Jones				
Richard A. Capanna	Michele L. Freeman	Arthur J. Kallai				
Octavio L. Carrillo	David L. Frye	C. Chris Kambak				
Stephen D. Casper	Sachiyo Fujiwara	Akiko Kaneko				
Andera Caturegli	Janey L. Gamble	Kyoko Kaneko				
Yang Chang	Tamera K. Gibson	Beth Kapocias				
Nancy M. Chapman	Adele M. Glover	Katherine Kasper				
Jennifer B. Cherubini	Michael T. Goodwin	Charlotte Keeney				
Hwang Hye Cheun	Noreen A. Gray	Nancy Kemp				
Marilyn M. Chew	Michael E. Green	Kevin B. Kenan				

RESERVE OFFICERS' TRAINING CORPS



MY DEGREE GOT ME THE INTERVIEW. ARMY ROTC GOT ME THE JOB.

Things got pretty competitive for this job. I'm sure my college degree and good grades kept me in the running. But in the end it was the leadership and management experience I got through Army ROTC that won them over.

You can begin to develop impressive leadership skills with an Army ROTC elective. Register now without obligation.



ARMY ROTC

THE SMARTEST COLLEGE
COURSE YOU CAN TAKE.

Add Army ROTC to your list of classes.
For more information call Captain Jeff Belles at 346-ROTC or drop by 1679 Agate St. on the U of O campus.

SAVE ON COMPUTER SUPPLIES

COMPUTER PAPER

\$3.99

500 SHEET PKG

\$7.98

1000 SHEET BOX

FLOPPY DISKS

TDK 3 1/2 DD

69¢

SONY 5 1/4 DD

59¢

MOUSE PADS

\$3.88

FLOPPY DISK CASES

99¢

Oregon
Art Supply

683-2787
720 East 13th Ave., Eugene
UPSTAIRS IN THE UNIVERSITY CENTER BUILDING
8:30-7:00 Mon. - Fri. 10:00-5:30 Sat.
12:00-5:30 Sun.

SALE ENDS 10-11-92

COMPUTERS

386SX/25 SUPERSYSTEM
AT A GREAT
BIZMART PRICE!

**EVERYDAY
\$1099⁹⁹**

III LASER
386SX/25
SUPERSYSTEM 100

- 80386SX, 25MHz
- 2MB standard RAM
- 100MB hard drive
- Dual floppy drives
- 14" VGA color monitor
- Keyboard
- Mouse
- Microsoft Windows
- Microsoft Works for Windows
- #4503015

BIZMART
DELIVERS
486SX/25MHz
PERFORMANCE
MONITOR,
PRINTER &
CABLE ALL AT
ONE
LOW PRICE!

**YOU GET ALL
THIS FOR ONLY
\$1499⁹⁹**

EXEC-4000™
• 486SX, 25MHz
• 2MB standard RAM
• 85MB hard drive
• Dual floppy drives
• Keyboard

• Mouse
• MS-DOS 5.0
• Microsoft Windows 3.1
• PFS:WindowWorks
Monitor sold separately.
#4503257.

star
THE COMPUTER PRINTER
NX-1001 MULTI-FONT PRINTER
The ideal feature-packed 9-pin dot-matrix printer for small businesses!
Has five resident fonts, 10 sizes and eight enhancements.
#4501874

PRINTER CABLE
Six-foot parallel printer cable. #4501838.

SVGA MONITOR
Color 14" .28mm-dpi SVGA monitor. #4503071

JANSPORT
**SUPER BREAK
BACKPACK**

**EVERYDAY
\$19⁹⁹**

The campus carryall! Durable, water-resistant Cordura® nylon. Has large zippered front pocket and "Key-Per" key holder. #1010956.

BIZMART
**RING BOOK
INSERTABLE INDEXES**
Our finest indexes. Heavy duty white ledger paper with three holes for standard ring binders. Typewriter-spaced inserts for changing titles. Five tabs. Letter size.
#1001620 Asst./5 Tabs
#1001622 Clear/5 Tabs

**YOUR CHOICE
EVERYDAY
59¢
PER SET**

BIC
**EVERYDAY
\$1⁷⁹**

**YOUR
CHOICE
SHIMMERS PENS**
Colorful Bic Shimmers pens with translucent color-tinted barrels and ink in hot fashion colors. Assorted 6-pack with two turquoise, two purple, one lime green and one pink pen.
#1009028

BIC
**HEATWAVES BALL
POINT PENS**
Retractable ball point pens in exciting neon colors. Four-pack assortment. Medium points, blue ink. #1009030.

**WAVELENGTHS
TRIBALS™ PENS**
Colorful totem-pole tribal-design medium-point ball pens. Three with blue ink, three with black ink.
#1010886.

BIZMART
DIVISION AVE.
BELL LINE HWY.

85 Division Blvd.
Eugene, OR
(503) 461-2848

COLLEGE STUFF

**T-SHIRT
EVERYDAY
\$9⁹⁹**

**SWEATSHIRT
EVERYDAY
\$19⁹⁹**

JANSPORT
COLLEGE LOGO T-SHIRT
Rugged 100% cotton compacted heavyweight jersey with quality taped shoulders & double-needle coverstitched hems. #1010984.

COLLEGE LOGO SWEATSHIRT
Heavyweight 50% cotton/50% polyester fleece features quality construction, detailing and generous athletic cut. #1010981.

**WHO IZ LOWERING
THE COST OF
HIGHER EDUCATION?**

BIZ

Why pay more at the bookstore? BizMart has those college must-haves at super-low everyday prices. With over 10,000 products, you'll be suprised at what you'll find. We've got everything you need from classroom to dorm room, even T-shirts and sweatshirts with many popular local-college emblems!
BIZ IZ big on campus.

**TECH
UNIVERSITY**

**EVERYDAY
\$2⁹⁹**

CHOOSE FROM
BLACK, BLUE OR
RED

**KEITH
CLARK**

COLLEGE IMPRINT PLANNER
5 x 8" weekly planner. August 1992-July 1993. One week per two page spread. Available in black, blue or red. #1011046.

BIZ IZ

School

BIZ

FURNITURE

**EVERYDAY
\$194⁹⁹**

Accessories
not included.

**O'SULLIVAN
INDUSTRIES, INC.**
COMPUTER WORKCENTER
Functional furniture with colonial oak laminate finish. Includes hutch, pull-out printer cart with adjustable shelves, large letter-size file and box drawers, sturdy pull-out keyboard shelf, CPU shelf and raised monitor platform. 48 1/2" x 59 1/2" x 23 1/2". #2001562.

**WE
DELIVER!**

**EVERYDAY
\$9⁹⁹**

**BLACK OR
BURGUNDY**

**CAMBRIDGE
IMPRINT
PADFOLIO**
Vinyl 8 1/2" x 11" pad holder with pen holding loop. Available in black or burgundy. #1010964.

**EVERYDAY
\$1⁶⁹**

**90
SHEETS**

AMPAD
WIREBOUND NOTEBOOK
One-subject 11 x 8 1/2" notebook with pocket. 90 sheets. #1009801.

**EVERYDAY
79¢**

CHOOSE FROM
WHITE, BLUE, RED
OR GREEN

2-POCKET PORTFOLIO
Attention-grabbing laminated paper portfolios in white, blue, red or green. #1010955.

**EVERYDAY
\$9⁹⁹**

CHOOSE FROM
BLACK, BLUE, RED
OR TEAL

mead
FIVE-STAR
FIRST GEAR ZIPPERED BINDER
3-ring binder with tough nylon case and pockets for papers, calculator, pens & more. Choose black, blue, red or teal. #1011662.

**EVERYDAY
\$2⁹⁹**

**6 DOZEN
PENCILS**

DIXON
ORIOLE #2 LEAD PENCILS
Break-resistant commercial 8-grade lead and quality pink eraser. Six dozen. #1009343.

ELECTRONICS

**EVERYDAY
\$59⁹⁹**

ROYAL
**8500PD PROFESSIONAL
PRINTING CALCULATOR**
Heavy-duty calculator features high-speed black and red ribbon printing with comma separation. Extra-large & bright 12-digit display. AC power. #3009319.

**EVERYDAY
\$15⁹⁹**

BELL Phones
BY NORTHWESTERN BELL PHONES

THE 150 SLIM-STYLE TELEPHONE
Built with Genuine BELL™ reliability and durability! Features three fast-dial emergency buttons and 10 auto-dial numbers. Lighted keypad. For desk or wall. #3002506.

SOFTWARE

EVERYDAY \$74⁹⁹

SPINNAKER
PFS:WRITE PC SOFTWARE
DOS word processor with what-you-see-is-what-you-get (WYSIWYG) display & scalable fonts. Plus spelling/grammar checker and thesaurus, clip art & mail merger. #4502681.

EVERYDAY \$54⁹⁹

QUE SOFTWARE
**RIGHTWRITER™ PC
SOFTWARE**
The best way to improve your writing! Proofreads documents for thousands of errors in grammar, style, word usage and punctuation. Works within several popular word-processing programs. #4502761.

PERIPHERALS

**EVERYDAY
\$99⁹⁹**

**SOUND
BLASTER**
BLAST NEW! 16 BIT! 100% DIGITAL!

**SOUNDBLASTER
CARD**
Add amazing sound capabilities to your PC. Features 11-voice FM music (AdLib compatible), digitized voice input (DMA), joystick port and microphone amplifier & jack. MIDI interface. #4501925.

**EVERYDAY
\$89⁹⁹**

COMPUTER PERIPHERALS, INC.

**24961f 9600-BPS
INTERNAL FAX/MODEM**
Advanced 9600-bps fax and Hayes-compatible 2400-bps modem lets you send and receive faxes from any G3 fax device. For IBM and compatible computers. #4502459.

BIZMART IS BIZSMART

10,000 BIZNESS PRODUCTS, 7 DAYS A WEEK

NEXT DAY DELIVERY
1-800-688-6278

Get More Purchasing
Power with BIZCHARGE!

STORE HOURS
Mon-Fri 8:00 AM-9:00 PM
Sat, 9:00 AM-9:00 PM
Sun, 12:00 PM-6:00 PM

Most major credit
cards accepted

BIZMART has made every effort to ensure the prices listed are accurate; however we are not responsible for typographical or pictorial errors. We reserve the right to limit quantities. BIZMART will meet or beat any current, locally advertised price on any of the 10,000 products that we stock.