



—Lane Community College—

THE TORCH

April 9, 1993

Eugene, Oregon

Volume 28, Issue 20

Early advice earns early registration

ARLENE HOUGLAND
staff writer

You wait until your prescribed time to register for classes, and then you call Class-Line hoping to get that class you really want to take.

Mr. Class-Line says, the class is full, but if you push seven and the pound sign you can find out what other classes are open. After several attempts to find a class you are left with a frustrated feeling and no one to yell at, but the synthesized voice at the other end of the phone line.

If you are a continuing LCC student planning to take classes this fall and you have experienced this form of frustration, you may want to take advantage of the new Early Ad-

vising/Early Registration program the Counseling and Advising department is offering this spring.

Counselor Rich Freund says, due to limited resources only 3,000 students will have the opportunity to register early for Fall Term 1993 on Sept 1, 2, or 3 before all other returning and new students.

Jan Brandstrom, the other LCC counselor coordinating the program, says the primary purpose of this new idea is to help LCC students to be more successful by encouraging them to plan ahead. "Students who do long range planning tend to have more

Students who do long range planning tend to have more success in completing their degree.

—Jan Brandstrom
counselor

ahead. "Students who do long range planning tend to have more

Turn to ADVISING
page 4



PHOTO BY BETHANY DOUGHER

Rally helps timber workers

John Lloyd and Louise Jones hand out prizes during the back to work rally for dislocated workers. The rally was a celebration and opportunity for nearly 300 dislocated workers to meet

with prospective employers.

Some of the officials that attended the rally included Sherman Bros. trucking, Sacred heart and Spectra-Physics.

Lectures celebrate Oregon Trail project



PHOTO BY WOODY

Wagonmaster Wade Skinner of Junction City will bring an authentic covered wagon to LCC as part of the first campus events to observe the 150th anniversary of the Oregon Trail.

Some of the other events in the celebration include fiddle music, folk dance, and a special display prepared by graphic design student Yvonne Endersby.

Also LCC Foodservice will sell Western fare - including barbecued buffalo burgers.

In the last session in May, "A Wagon Train Menu," LCC staff members Loretta Plaa, Linda Pompel, and Beth Naylor will list the supplies necessary to sustain a wagon train during its five-month journey, and the foods women prepared each day.

Many of the facts, lore, and myths about the Oregon Trail are included in a free five-part LCC lecture series to commemorate the trail's 150th anniversary.

"Our topics range from trail geography to trail lore," says planning committee coordinator Pete Peterson. "We're also covering Oregon Trail supplies, covered wagons, food, music, and weapons. A good deal of time will be devoted to the Native American perspective."

• On April 16, LCC instructors Ryan Anderson and Milt Madden will present a lecture and slide show about the well traveled road. The discussion will take place from 11:30 a.m. to 12:30 p.m. in the South Gym, Room 202 of the PE Building.

Anderson, a geography instructor, will trace the cross-continental wagon route begun in 1843 from the Missouri River to the Rocky Mountains, and then to the Pacific Northwest. American history instructor Madden, whose specialty is Oregon Trail cultural history, will cite pioneer journals and other written accounts to describe the settlers' expectations about the "Oregon Eden." He'll also de-

scribe some of the harsh realities they encountered over the 2,000 mile journey.

Joining them will be wagonmaster Wade Skinner of Junction City who will bring an original covered wagon to the campus an establish and encampment in Bristow Square between the Center and PE Buildings.

Other April 16 activities include fiddle music by folklore instructor Linda Danielson, folk dances led by instructor Nancy Anderson, and a display prepared by graphic design student Yvonne Endersby.

The college Foodservice Department will sell Western fare — including barbecued buffalo burgers.

• On Friday, April 23, Danielson will discuss Oregon Trail folk stories — those that originally attracted emigrants to Oregon, some that got them through their ordeals, and the stories that reflect on their experiences. Danielson will also relate family stories by descendants that "mythologize" the events of the 1840s and 50s.

• In an April 30 session titled

Turn to TRAIL
page 8

Commentary

Crisis may have positive side effects

BY ARLENE HOUGLAND

Community colleges in Oregon are as diverse as the communities they serve, but the present crisis in educational funding could be the catalyst needed to help them form a closer bond in order to meet the challenge of providing quality education with fewer resources.

Until recently, each college could afford to focus primarily on the needs of its own district. This unique flexibility was encouraged by the Oregon State Legislature when it stated in ORS 341.009 (8) "The community college should offer as comprehensive a program as the needs and resources of the area which it serves dictates."

So programs, student governments, and student services vary from college to college. For example, Southwestern Community College in Coos Bay waives tuition for dislocated workers in the fishing and timber industries and for Desert Storm veterans. This same flexibility allows the ASLCC to provide a stipend of approximately \$5000 per year plus tuition waiver to its president, while presidents at most other community colleges in Oregon receive only tuition waivers. LCC currently has the only student supported child care center in Oregon.

Portland Community College and Clackamas Community College serve large metropolitan communities, while Central Oregon Community College in Bend and Blue Mountain Community College in Pendleton serve a more rural population.

In order to preserve the exceptional qualities of the community college system, it is important for each one to retain a certain amount of autonomy. But as we approach the 21st century with its increased technological demands and a "do

more with less" economy it will become more important for the community colleges to collaborate with one another. Interdependence may have to take precedence over independence.

Craig Taylor, director of LCC's Research and Planning department says the effects of Measure 5 are already causing community colleges statewide to look for more uniform ways to measure their progress. However, he says, numbers are not always as objective as they appear.

Simply looking at the numbers doesn't always tell the human stories behind the lost programs and services.

Judy Cochran, director of development at Colombia Gorge Community College in The Dalles, and Gerald Pygott, Legislative Liaison at Linn Benton Community College in Albany were eager to see any research information *The Torch* obtained for the college comparison articles.

Crisis is often the first stage of transformation. Just as financial difficulty in a family has the potential to strengthen and bring growth to the family unit, so the budget cuts statewide can increase communication and cooperation at all levels of the community college system.

This crisis is not temporary. If the present trend of placing unreasonable financial limitations on education continues then perhaps community colleges in small rural areas will be forced to close their doors and send their students to schools outside their district. It's time for administrators, faculty and students of community colleges to think about forming a grass roots coalition to work together to be sure that community based quality education is available to all Oregon residents.

Letters to the Editor

What are our priorities?

To the Editor,

At the last Student Government meeting before the end of winter term, I approached Student Government asking for my Childcare subsidy to be continued as a one term request for half of winter term and all of Spring term. This is Financial Aid Set up for Student parents who have an unmet financial need.

The funding for this program has been discontinued. Last Tuesday the Student Government voted on whether or not they would be willing to assist with this programs funding in any way possible.

The total amount needed to keep the program fully in tact was 18,000.00, of that total, they agreed to help by matching what the Childcare Co-op was willing to give, which was between two and three thousand dollars. This is just barely one fourth of the amount needed for the child care subsidy program.

The result of this meeting was very disappointing to me. I am insulted at this "good gesture" (as one senate member said)

What are our priorities? Student Government had just sponsored a trip for some of the students and faculty from the Dance Department to go to a conference of professional choreographers. Yet all they can do for us as student parents struggling to make it is two or three thousand dollars.

Jennifer Beauenamp

Lobby's thanks

To the Editor,

The staff of Oregon Student Lobby would like to thank the delegation of Students from Lane Community College that attended the OSL/CCOSAC Lobby Day on March 3rd in Salem. We would also like to thank the faculty and administration who were supportive in the students' efforts.

The Lobby Day was extremely successful- at least 500 students from around the state were there to oppose tuition increases, program cuts and enrollment reductions in post-secondary education and to encourage legislators to work for replacement revenue in the wake of Ballot Measure 5.

We would also like to thank all the students who wrote letters opposing the cuts in programs and enrollment and opposing the tuition increases. These letters in support of a strong post-secondary education system for Oregon are crucial to our efforts. The personal visit segment of the Lobby Day was especially successful. Students met with lawmakers in over 140 separate meetings!

Thanks again- and remember that there are still lots of things you can do to prevent The tuition increases, enrollment reductions and program cuts.

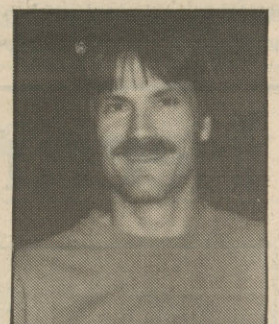
The Staff of Oregon Student Lobby:
Robert Nosse, Executive Director
Ed Dennis, Field Director
Jane Lesser, Legislative Director

Opinion poll

Do you agree with President Clinton's proposal to spend \$1.6 billion in economic aid to Russia?

Photos by Arthur Mason
Interviews by Woody

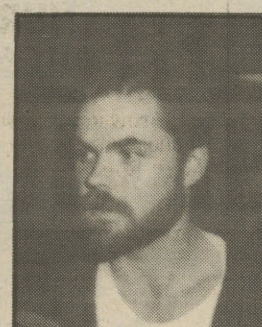
"I agree with it if we would cut money for defense contracts. Otherwise, that money should be spent at home."

Maria Reader
Dance

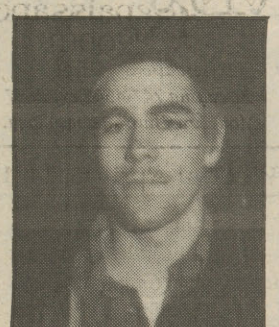
"I agree with the proposal. I think it would be in America's best interest to invest money in Russia."

Reese Hutchenson
Business and Economics

"No. We need that money here in the U.S. for our needs. We have so many underprivileged kids and homeless people. Russia needs to redo their government or something."

Linda Thomas
Elementary Education
English

"No. I think that we had enough foreign policy during the 1980s with Reagan and Bush and I think we should spend some time with domestic policies, people without health insurance, things like that."

Timarion Stratis
English

"No. I don't think that America should be sending them all this money... We should send education rather than giving them the money and saying do what you think you should do with it."

Cindy Gregory
Dental Hygiene program

The TORCH Staff

| | |
|-------------------------------|-------------------|
| Editor | SONJA TAYLOR |
| Associate Editor | LARRY HAFIL |
| Managing Editor | ERIC JAMES |
| Production Manager | JOANN LAPLANTE |
| Photo Editor | ARTHUR MASON |
| A&E Editor | LUKE STRAHOTA |
| Sports Editor | DONALD SMALLEY |
| Asst. Photo Editor | MICHAEL WOOD |
| Distribution Manager | BRANDON DODGE |
| Advertising Manager | SARAH FABBRI |
| Photographers | MATTHEW J. AUXIER |
| | BETHANY DOUGHER |
| Staff writers | |
| ARLENE HOUGLAND | MIKE GOODWIN |
| DON REYNOLDS | GARY HANIUK |
| Production staff | |
| BRANDON DODGE | KEN HINMAN |
| SARAH FABBRI | STEVE VOGEL |
| CHAD DOUGHERTY | TAMI PATTON |
| SCOTT COUNTS | |
| News, Editorial Advisor | PETE PETERSON |
| Production Advisor | DOROTHY WEARNE |
| Advertising Advisor | JAN BROWN |
| Printer | SPRINGFIELD NEWS |

The Torch is a student-managed newspaper, published on Fridays, September through May. News stories are compressed, concise reports intended to be as fair as possible. They appear with a byline to indicate the reporter responsible. Editorials are the opinion of *The Torch* Editorial Board. Forums are essays contributed by *The Torch* readers and are aimed at broad issues facing the community. They should be limited to 750 words. Deadline: Monday, noon. Letters to the editor are intended as short commentaries on stories appearing in *The Torch* or current issues that may concern the community. Letters should be limited to 250 words and include the author's phone number and address. Deadline: Monday, noon. The editor reserves the right to edit forums and letters to the editor for grammar, spelling, libel, invasion of privacy, length and appropriate language. All correspondence must be typed and signed by the writer. Mail or bring all correspondence to *The Torch*, 205 Center, 4000 E 30th Ave., Eugene, OR 97405. Phone 747-4501 ext. 2014



David Phelps and Lynn Lorentz discuss the proportional representation petition with petition author Brian Wanty.

Student proposes proportional representation in ASLCC Senate

BY LARRY HAFTL
associate editor

LCC student Brian Wanty is proposing a ballot measure that, if passed, will completely change the way student government is elected.

"There are two different aspects to what I am proposing. One is the way the legislative body, the ASLCC Senate, is elected and that would be through proportional representation by parties. The other issue is how the executive officers are chosen and that is basically a parliamentary system," says Wanty.

Under Wanty's proposal, students would vote for the party of their choice rather than individual candidates. Each party would be awarded a number of the 15 available Senate seats directly proportional to the percentage of the total votes that party received. Parties that won seats would choose who would fill the seats.

Once the 15 Senators are chosen, they elect the executive

officers from within their ranks.

When asked why he is promoting this idea, Wanty said, "The main reasons for doing this here and now are the problems with the previous Senate administration and also some long term problems.

"Two main ideas are in the question. Fair and effective representation. Being fair means distributed among all the groups in proportion to the support they have. Effective means that representation is meaningful, that it's not just an advisory committee, you do get to vote and to choose leaders.

"Our current electoral system wastes a lot of student leaders in that the people most committed to student government run for higher offices and if they don't win they're out completely. Under this system they may not get as high an office as they seek, but they will still have the opportunity to play an important role in student government."

Wanty is sure he will get the

100 signatures required to get the question put on the spring ballot, but does not know how the actual vote will go. "It takes a two-thirds vote in the general election to amend the constitution and I don't know if that's possible. The secondary issue is educating students about alternative forms of election and that will be accomplished no matter what. It's already happening," says Wanty.



FRESH • FIT • N' FAMOUS™
MEXICAN FAST FOOD
"Heavy Burrito's"™
Healthy & Inexpensive
• Low Sodium • Low Cholesterol
• High Carbohydrate • High Fiber
• All Natural
26th & Willamette • 465-1113

NURSES. CONTINUE YOUR EDUCATION...THE SMART WAY.

Army Reserve Nursing offers a variety of opportunities to further your education at little or no cost to you.

- **Specialized Training Assistance Program (STRAP)** provides an extra monthly stipend of over \$750 for nurse anesthesia, operating room training, RN-BSN and selected master's degrees.
- **Health Professionals Loan Repayment Program** will repay qualifying federally insured student loans at a maximum of \$20,000 for select specialties.
- **Montgomery GI Bill** can give you up to \$5,040 to complete your B.S.N. degree.

Think about it. Then think about us. Then call:

1-800-USA-ARMY

BE ALL YOU CAN BE™
ARMY RESERVE

Pres., V.P. seek re-election

BY LARRY HAFTL
associate editor

ASLCC President John Mitchell and Vice President D.J. Holbrook announced at the April 6 Senate meeting that they intend to seek re-election this spring.

As vice president, Holbrook is responsible for organizing the elections. He expects to complete the organization and appoint someone else to oversee counting the ballots before he campaigns.

In other business, Mitchell noted that Senator Barry Waltz submitted a letter of resignation. Students interested in filling this vacancy should contact the ASLCC office, 479 Center Bldg., for information on the procedure.

Mitchell also announced that a special Senate meeting will be held on Friday, April 9, at 2 p.m. in 420 Center Building to discuss possible ballot measures related to student fees. The meeting will be open to the public.

Among the funding requests discussed by the Senate was an informal request for \$21,000 to subsidize the unmet financial aid needs of students with children in

the Early Childhood Education program. No documentation was offered to support the request. Linda Pompel, director of the ECE program, said funding subsidies had run out and it was probable that several students would have to drop out of school unless alternate funding could be found.

Stephanie Houghton, a Child Care Co-op representative, told the Senate that the Co-op would be giving between \$2,000 and \$3,000 to the ECE program. The Senate decided to match that amount.

The Senate also approved a request to provide 200 meals, free to students on a first come/first served basis, at the Roads to Opportunity Barbecue on Wednesday, April 28. Total cost is \$400.

The Senate tabled the following requests:

- Oregon Trail cultural events, \$600
- Lane Jazz Ensemble travel funding, \$605
- Performing Arts benefit concert, \$1,000

An informal request for \$500 from Performing Arts was denied.

ASLCC CAMPUS CALENDAR

ASLCC EMERGENCY MEETING
in the Boardroom April 9, 2-3:30 p.m.

ASLCC meeting in the Board Room
Tuesday, April 13 at 3:30 p.m.

Be a part of the decisions.

Energy Resource Group
Meets Thursday, April 15 from 10-11 a.m.
in the Administration Conference Room

Roads to Opportunities

Come join the fun as the ASLCC receives the Roads to Opportunities flag from Umpqua CC and flies it to Linn-Benton CC. BBQ, 200 free lunches, free t-shirt raffle, public speakers.

April 19th, Bristow Square & the Cafeteria.

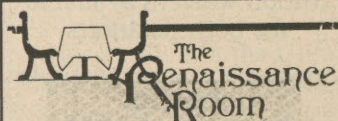
⇒ Put your pennies in the jar and enter the drawing for a \$100 scholarship at the Student Resource Center TODAY!

April is
Community College Month
Volunteers are needed for various events. For information contact the SRC, 2nd floor CEN.

The student government wants to know your opinion on:

- Support of Student Health
 - Funding for Child Care Co-op
 - Funding for OSPIRG
 - Support of Lane's Athletic Program
 - Bus Pass/Parking Permit
- Let us know. We are in CEN 479.

✓ **The Elections are coming!**



Reservations Accepted
By calling 747-4501, ext. 2697
Mon thru Thurs. 9 a.m. - 2 p.m.

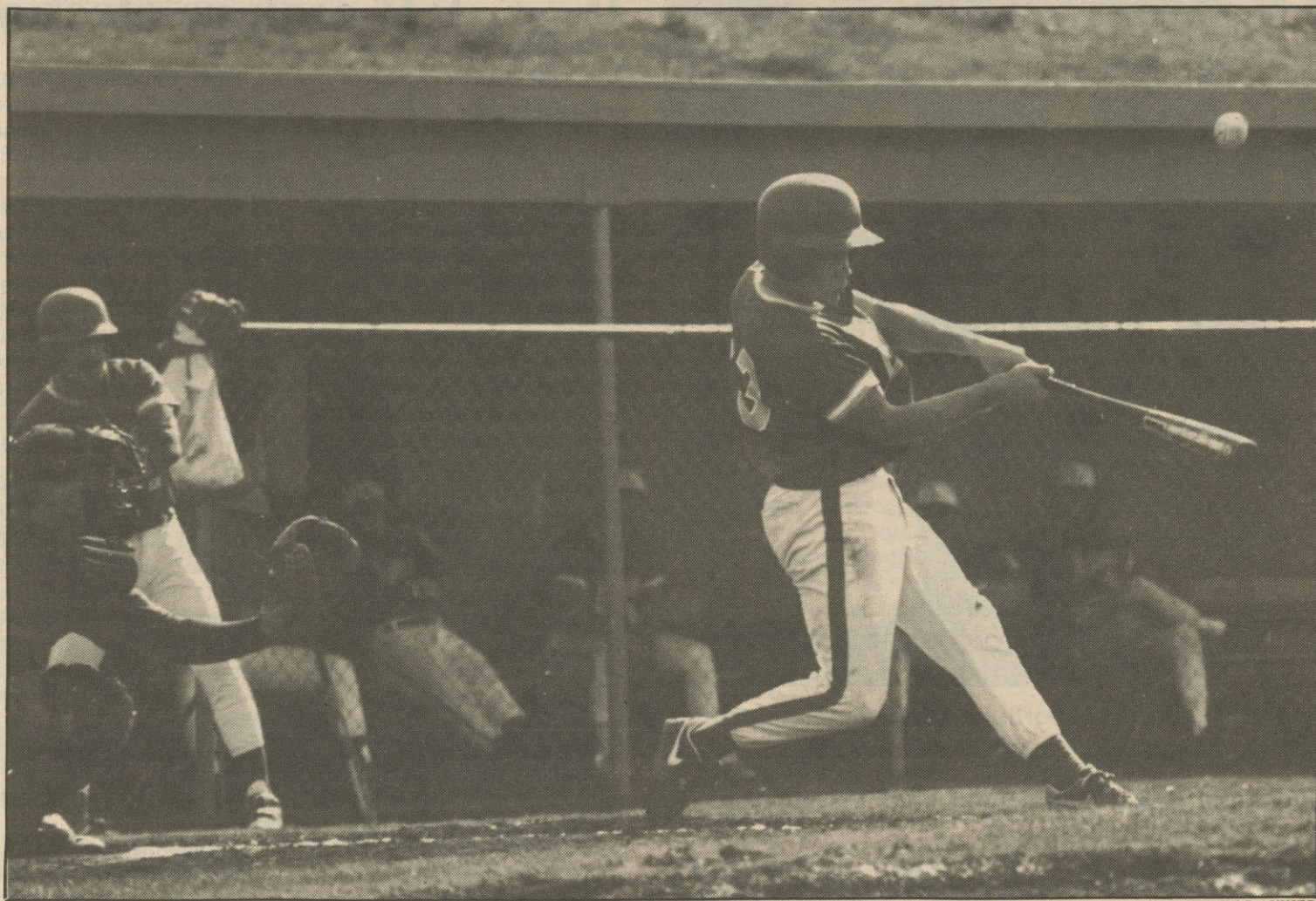
Week of April 13, 14, 15

Sun-Up Shake Mocktail
Cream of Cauliflower Soup
House Salad/Choice of Dressings
Chicken Breast Princess
Pork Tenderloin Charcutière
Filbert Torte Française

Lunch served: **Tuesday, Wednesday & Thursday**
11:30 a.m. to 1:15 p.m.

Next to the Deli, in the
Northeast Corner of the Cafeteria

Buy a Mug of Coffee at
the Deli for \$4.50 and
get unlimited refills for
25 cents.



MATTHEW J. AUXIER

Titans battle Ducks

Sunshine, blue skys, green grass and baseball. All were present Wednesday afternoon as the Lane Club baseball team played host to the UO Club team. The game lasted 11 innings before the Ducks rallied for 8 runs and a 16-8 victory over the Titans. Despite the tough loss, coach Bob Foster feels confident that his team can avenge the loss.

#13 Dan Weber lifts a fly ball early in the game as player/coach Bob Foster waits in the on deck circle.

Name brand perfume similarities.

2.3 OZ spray bottle. Ladies' and men's available at just \$12.50 each.

Ladies' similarities of Chanel No. 5, CoCo, Chloé, Lauren, Obsession, Opium, Poison, Passion, Safari, Samsara, White Diamonds.

Men's similarities of Aramis, Bijan, Jazz, Giorgio, Fahrenheit, Obsession, Oscar de la Renta, Paco Rabanne, Polo.

Your payment can be made with personal check (3 or 4 weeks delivery) or money order. Include \$3.50 for shipping and handling.

Send to: AROUND THE WORLD II
P.O. BOX 42719
LOS ANGELES, CA 90050-0719

ADVISING continued from page 1

success in completing their degree," she says.

To participate students must attend a scheduled advising session for their major, or the Associate of Arts Oregon Transfer Degree, or one for undecided students. The counseling department has scheduled several sessions beginning April 12 and ending May 21. A schedule of the advising sessions is available at the Counseling and Advising Center on the second floor of the Center Building. At the sessions the students will develop a course plan for Fall

Term. Freund says students should bring their latest grade report or their transcript to their session.

The first 3,000 students who complete an early advising session will be given a time to register on Sept 1, 2 or 3. Participants in the program will be allowed to register for credit classes only, and can make changes to their schedules anytime after their initial registration time.

Greg Fishwick, LCC's director of counseling, says that continuing students who wait

until summer to see counselors have to compete with new students for the advisors' time. "We added the incentive of early registration, because we know it doesn't help to plan if you can't get the classes you need" he says.

Both Freund and Brandstrom agree that even if a student does not participate in the early advising program, he or she should consider contacting an advisor for assistance in planning their academic program.

For more information stop by the Counseling and Advising Center, or call 726-2204.

THINK AGAIN.

IF YOU THINK TOUGH IS ALL YOU HAVE TO BE TO MAKE IT IN THE MARINE CORPS, THINK AGAIN. YOU ALSO HAVE TO BE SMART. IF YOU'VE GOT WHAT IT TAKES TO BE ONE OF US, SEE YOUR MARINE RECRUITER.

Marines
THE FEW. THE PROUD. THE MARINES.

For more information call (503) 326-3021

HELP WANTED

ASSISTANT PRODUCTION
MANAGER
a paid position

CLASSIFIED AD
MANAGER

tuition waivers available
for both positions

Applications are available in
205 CEN
Deadline is April 15

FOREST VILLAGE
Apartments
S.E. EUGENE

Quiet, Quiet, Quiet

Enjoy the beauty of
woods & wildlife
in super floor plans

2 BEDROOM, 1 1/2 BATH
\$495.00 & \$515.00
PER MONTH

•SWIMMING POOL
•WEIGHT ROOM
•BUS TO CAMPUS
•SAUNAS

687-1318

Instructor soars to new heights with 3-D images

BY GARY HANIUK

staff writer

Has this man (shown in photo) gone mad and flown off to join his feathered friends?

Or does the photo sculpture installation by LCC photographer and instructor David Joyce, titled "Escaping Man," reveal something much more significant? The only way to find out is to view the exhibit currently on display at the University of Oregon Museum of Art, Mezzanine Gallery, March 24 - May 16.

Joyce, whose specialty is life-sized imagery, is well known for his work located on the wall of the Eugene Airport—about 160 images of people taking flight into the sky.

Joyce started out working with film and video; then made

the transition to producing life sized Xerox portraits of people.

"I would drag people over Xerox machines and copy them," says Joyce. "Then I cut them out and mount them on walls." Joyce says before he began working on images, he had no previous experience in photography. He's never even taken formal classes in photography. "In a way," says Joyce, "that may be why I never had the idea of photography as being small rectangular images hanging on walls."

Joyce says that photography was something he learned because he needed it for his films and videotapes.

"I think my preoccupation with large scale figures comes from film," says Joyce. "It's three-dimensional images being replicated into two-dimensions

on the screen."

The new "Escaping Man" pieces were produced on the floor in Joyce's studio. "They're printed in progressively smaller sizes to create the feeling of depth. The smallest image may be five inches long, and the one standing on the floor is life-sized," says Joyce.

In addition to the escaping man, there is a life-sized photo sculpture of a woman standing behind a chair.

As is the nature of sculpture, it is necessary to walk around the photo exhibit to get the entire picture. "As you walk into the space you see the rest of the display. There is no way to photograph this so you can see it all at once. You can't get it until you commit to the space," says Joyce.

David Joyce will present a lecture about his work on April 15, at 7 p.m. in Room 100 Willamette Hall on the UO campus. The talk will be free and open to the public.

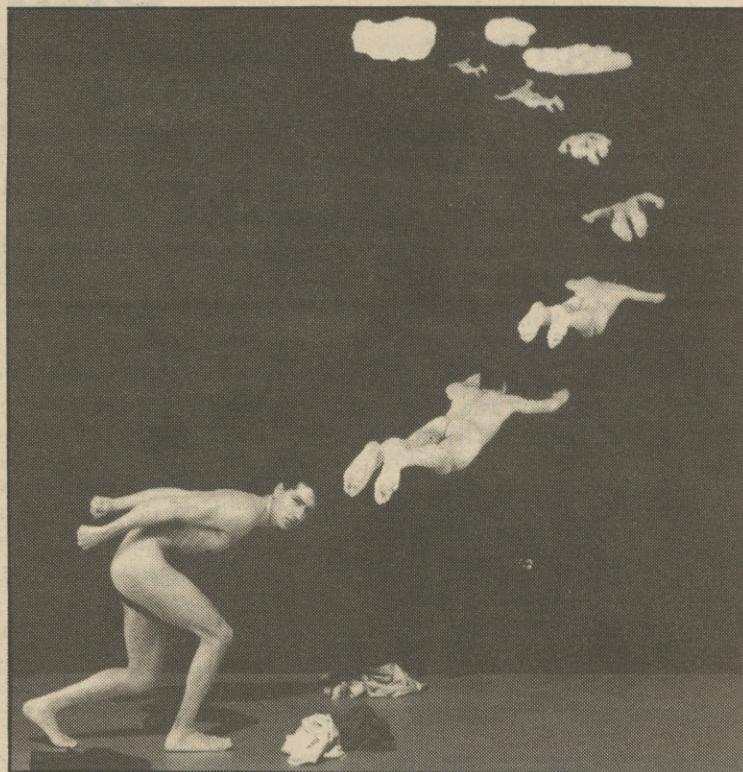


PHOTO BY CLIFF COLES

"Escaping Man," a photo sculpture installation by David Joyce, is one half of the exhibit now on display in the Mezzanine Gallery at the University of Oregon Museum of Art.



PHOTO SUBMITTED BY MARY FOLBERG

Aaron Wheeler-Kay (right) and Toney Loupe (left) display the agile and versatile style of the Jefferson Dancers.

Young dancers amateurs, but performances are professionally mature

BY LUKE STRAHOTA

arts & entertainment editor

It seems that whenever a school board has to deal with a budget cut, it starts with the arts department. After all, students need to take classes where they have to think.... use computers and learn math. What good is it to teach them how to draw, act, play music, or dance?

If school boards could watch the The Jefferson Dancers perform, they might reconsider the issue.

On April 14 and 15, the company who was praised by dance critic Martha Ullman West as "artists who take the audience into a world of illusion where movement is the vocabulary that persuades us to suspend our disbelief," will perform two shows inside the Soreng Theatre at the Hult Center at 7:30 p.m.

Based in Portland's Jefferson High School since 1976, the dance group performs works written for professional dancers. Performers range in age from 14-19 and study under a rigorous schedule of dance technique classes, two-hour daily rehearsals, and a full load of academic classes.

What's most interesting about this group, according to the amount of press it has received throughout Oregon, is the wide variety of dance styles each member must learn. With over 70 works in tap, ballet, jazz, modern, ethnic, and musical theatre dance pieces, the students are doing what some professional dance companies wish they could aspire to perform.

This is one reason why the company has gained so much popularity through out the Northwest, according to Jefferson

Turn to DANCERS
page 7

Successful Students PLAN AHEAD

EARLY ADVISING ⇨ EARLY REGISTRATION

Continuing students who participate in the LCC Counseling Department's Early Advising Program will receive help in developing a course plan and will be able to register early for Fall Term 1993.

Early Advising Sessions begin April 12, 1993. Space is limited. See the Counseling & Advising Center for Details Second Floor, Center Building

Pheasant Park Apartments

NOW RENTING AND TAKING APPLICATIONS!

- Beautifully landscaped grounds
- Laundry facilities
- Playground
- Tanning salon
- New recreation room
- And more!

1 2 3 BEDROOM
as low as

\$ **335**

CALL NOW FOR MORE INFORMATION
STOP BY 475 LINDALE N. SPRINGFIELD

747-5411

Omnium Gatherum

UO OUTDOOR PROGRAM

The UO Outdoor Program will hold a clinic next week on Backcountry Basics: Stoves and Water Treatment at the UO EMU Outdoor Program on Tuesday, April 13, at 7:30 p.m.

The clinic will include subjects like stove selection, trouble-shooting and preventive maintenance as well as water filtering and other purification options.

Future clinics include: Basic Backcountry First Aid, April 20, 7:30 p.m. and Outdoor Photography Tips, April 27, 7:30 p.m.

For more information call 346-4365.

OSPIRG HUNGER CLEAN-UP

The Annual Hunger Clean-up is April 17. This event is a community service and fund-raising event for Lane County.

For more information, call LCC's OSPIRG at 747-4501 ext. 2166.

LCC SEMINAR, WORKSHOP OFFERED

"How to Manage Stress at Work" will be the topic of a workshop offered through LCC's new Seminar Series on Thursday, April 15, from 8:30 a.m. - 12:30 p.m. at the LCC Downtown Center.

Taught by Don Mihalow, this seminar focuses on ways to handle stress to make your life more productive. The cost is \$45.

"Worker's Compensation Claims Management" will be the topic of a 10-week workshop series offered through LCC's Business and Industry Services beginning Wednesday, April 7, from 6:30 - 9:30 p.m. in the Apprenticeship Building, Room 225, at the main campus.

These workshops are designed to meet the continuing education needs of persons involved with worker's compensation claims management, providing participants with information and tools to increase their effectiveness in their jobs.

The cost is \$550 for the series or \$65 for individual workshops.

For more information, contact Peg Allison, Business and Industry Services, LCC, 747-4501 ext. 2923.

BLOODMOBILE DRAWING FOR R.R. TICKETS

Lane Memorial Blood Bank's Mobile Donor Unit will park outside the Student Health Services on Wednesday, April 21, from noon to 3 p.m. Anyone donating a unit of blood will be entered in a drawing for lunch for two in the Renaissance Room. Donor registration will be in the hall behind the snack bar, by the stairs. Call Student Health at 747-

4501 ext. 2665 for an appointment and eligibility requirements.

ANNUAL IZZY'S PIZZA PARTY

Altrusa International of Eugene will host its annual Izzy's Pizza Party on April 27, from 11 a.m. - 10 p.m. at the Santa Clara Izzy's parlor. Funds raised go to help support Transition to Success, LCC an Women-space-Transition House and the Children's Literacy Project. Sparkles the Clown will visit and give away balloons from 4 to 7 p.m. Certificates may be purchased in advance from calling Virginia Collins at 465-4384.

A PUBLIC SERVICE ANNOUNCEMENT

S
T
A
I
R
S

MANY STUDENTS ARE UNAWARE THAT THERE ARE INTERIOR STAIRS IN THE CENTER BUILDING
(ONE SET ON THE NORTH AND ANOTHER ON THE SOUTH-THAT'S WHERE YOU'LL FIND US!)

Campus Ministry
center 242
or call ext. 2850

A PUBLIC SERVICE ANNOUNCEMENT

'Roads to Opportunity' coming

BY LARRY HAFTL
associate editor

The statewide celebration of community colleges will touch LCC on Monday, April 19.

At approximately noon a Toyota from Umpqua Community College's mechanics program will arrive on campus carrying a special community college flag. The flag's arrival will be greeted by city mayors, Board of Education members, a college president, student government representatives and several hundred students.

Waiting to carry the flag to Linn Benton Community College will be a helicopter from LCC's Flight Tech program. A support crew will also be traveling to LBCC in an RV from

LCC's Recreational Service Technician Training program.

LCC President Jerry Moskus will have the honor of receiving the flag in the name of all LCC students, staff and faculty. Joining Moskus in speaking about the role and impact of community colleges on Oregon will be Eugene Mayor Ruth Bascom and other mayors, LCC Board of Education Chair Pat Riggs and other officials.

Following the reception, the flag will be given to ASLCC President John Mitchell who will carry it to LBCC aboard Flight Tech's helicopter.

Foodservices Manager Jim Wychules will be holding a Texas style barbecue starting at noon. The first 200 meals are free to students on a first come, first served basis.

Prizes and t-shirts will be given away, and special displays and other entertainment will fill out the celebration.

The helicopter and RV are scheduled to arrive at LBCC at

approximately 1:30 p.m. where a similar celebration is planned. All Oregon community colleges are participating in this "flag relay" in order to publicize the importance of community colleges and to highlight some of the special educational programs provided by each college.

The flag will eventually reach Portland where the statewide celebration concludes on April 28, 3:00 p.m., at the opening of the American Association of Community Colleges national convention. Governor Barbara Roberts is expected to be on hand to greet the final arrival of the flag.

Students are encouraged to attend this event in Portland in order to help publicize the need for community colleges. Students interested in participating should contact Nancy Johnson in the Student Resource Center, second floor lobby, Center Bldg., to coordinate transportation.

Just

WALK

to the LCC cafeteria
whenever you run out of
cash. The SELCO cash
machine is waiting to
serve you.



"We Work For Our Members"

CIRRUS • MASTERCARD • EXCHANGE CARD • U-BANK

ACCESS

Women!

Explore all the technical career options open to you

ACCESS offers you the chance to investigate technical training through hands-on one credit classes

**No experience necessary!
Supportive environment!**

Offered Spring Term

Automotive Technology
Energy Management
Construction
Welding
Woodshop
Aviation Maintenance

For more information, call the Women's Center
747-4501 x2353

CLASSIFIED ADS ARE FREE to LCC students and staff, 15 word maximum, and will be printed on a *space available* basis. All other ads are 15 cents per word per issue, paid in advance. The TORCH reserves the right not to run an ad. All ads must have a verifiable name and phone number. Deadline for Classified ads is 5 p.m. Friday for publication in the following Friday's issue.

AUTOS

1979 HONDA CIVIC 2-door, nice body, strong engine, nice interior. \$1000 OBO, 484-2438.

1986 HONDA SPREE. Only 350 miles and still like new. \$600. Steve, 344-9363.

'86 HONDA SPREE, only 330 miles. Runs like new. \$400, 942-9411.

1971 DATSUN PICKUP with canopy. One family owner. 98,000 miles. 747-6663, leave message.

240 Z DATSUN. 1973, red paint, very clean body. Runs great. Aluminum wheels, much recent work. \$2000. 687-6703.

'83 MAZDA GLC 98,000 miles, good body, brakes and stereo. Needs engine work. \$325. 687-2230.

'82 MAZDA 626 good condition, needs work. Air PS & windows, sunroof, 4dr, 5sp. Make offer, 343-2729.

1983 TOYOTA COROLLA DELUXE 4-door sedan. Needs some body work. Mechanically sound. \$1250. Call 747-1361.

'77 TOYOTA COROLLA. New clutch. Runs great, \$800 OBO. 942-9411.

'64 VW BUG. 1641 engine, 12

volt. \$800 OBO. Call Kim at 687-6917.

'86 FORD TEMPO. AT, PS, Radio, defrost, etc. 56K. Runs excellent. \$2450 OBO. 687-9641.

1988 CHEVY SPRINT. 40-50 MPG. Asking \$2500. 747-7365.

FOR SALE

CONN ALTO SAX, mint condition \$295. OTTO link mouthpiece \$25. Electric heater \$20. 747-5213.

FENDER 6-STRING BASS. Great to funk. \$1600 OBO. Must see!

BIACHI MT. BIKE (HYBRID) Excellent shape, \$250. 485-5355.

BACKPACK Camptrails/Catskills. 3 months old, excellent 2-3 day pack, retail \$169. \$100 OBO. Call Jeff, 942-4505.

NINTENDO W/9 GAMES \$150. Motorcycle, Yamaha-81 400. \$450 w/2 helmets. Oriental pure wool 8x8 1/2 ft. carpet \$650 OBO. 461-2098.

ELECTROLUX rug shampooer. Like new - used 3 times. Best offer. Call evenings, 689-5765.

LAB RESCUE- retrained labrador retrievers seek new owners for second chance. Call 686-1240.

GET STRAIGHT A'S! Cut study time! Order "Making The Grade" for academic excellence. \$2.99. P.O. BOX 70531, Eugene, OR 97401.

BUY & SELL Guitars Galore!! Musical Instruments (flutes to tubas, accordions to zithers) photo equipment accessories, new Montana Dreadnought Folk guitars \$185, free tambourine with \$10 purchase. 361 West 5th.

DANCERS continued from page 5

Dancers founder and this year's director, Mary Folberg.

Not only have the Northwest audience staken interest in the group, but many national dance companies and choreographers call onto the troupe for talent, according to Folberg. UCLA is so impressed with the quality coming from Jefferson, that it automatically places graduates into its junior level dance classes, adds Folberg.

Folberg says that even if dancers do not pursue dance as a profession, the training and discipline will help students in the

future.

"I firmly believe that young people are capable of accomplishing very high achievements," says Folberg.

Tickets for the two shows are \$7.50 for adults and \$5.50 for students and seniors. For more information call 687-5000.

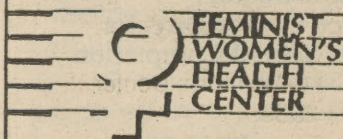
The Clothes Horse



Resale has never been like this before...
345-5099
720 E. 13th
Free parking Open 7 days

"Women meeting the unique health care needs of women"

Free Pregnancy Tests • Birth Control
Gynecological Care • Cervical Caps
Abortion Services



633 East 11th Avenue
342-5940
Medicaid/Insurance

FREE

FREE LUNCH! Thursdays at noon, Industrial Tech 218. Bible Study, 1:00-1:50. Sponsored by Baptist Student Union.

FREE LUNCH & Bible study. Every Wed. 12-1 in M&A 240 Episcopal Campus Ministries

FREE CLOTHING at the No Cash Clothing Stash. PE 301.

HELP WANTED

CRUISE SHIPS NOW HIRING - Earn \$2,000+/month + world travel (Hawaii, Mexico, the Caribbean, etc.) Holiday, Summer and Career employment available. No experience necessary. For employment program call 1-206-634-0468 ext. C6070.

PART-TIME EMPLOYMENT with educational benefits; potential full-time summer employment. No prior experience necessary. Call the Naval Reserve. Ask for Keri or Jan, 342-7605.

HARMONICA; Cake Decorating instructor(s) for Fall 1993; Continuing Ed. 726-2252 - Call Lorna or Naomi ASAP.

'A' IN WR121? Be a writing tutor, earn a free class! See Sharon Thomas. CEN 454, ext. 2145.

OPPORTUNITIES

ATTENTION VETERANS: Seeking employment, benefit info? See Dave Schroeder, Vet's office, last Thursday of the month. 9 a.m.-11:45.

SERVICES

ACU-TOUCH office services - for your typing, editing, and other secretarial needs. Please call at 726-3832.

SPRINGFIELD
SCIENTIFIC
SUPPLIES
Scales
Chemicals
Lab Equipment

9-6 Mon.- Fri. • 10-5 Sat.
726-9176
1124 Main St.

DAY CARE. Five minutes from LCC in country setting. Please call Linda for details, at 726-1692.

SAY GOODBYE to cigarettes! Proven way to stop smoking. Call Natural Health Products, 726-1276.

WOMEN'S CLINIC in Student Health: For \$25 get a complete physical, including a breast exam, Pap, and screening for sexually transmitted diseases, urine infection, and anemia. Inquire about birth control pills (\$5/pack). Also Pregnancy testing (\$6), infection checks, PMS, menopause and menstrual problems.

NEED HELP with a writing assignment? Visit the Writing Center. 9-3 every day. Across from CEN 451.

NEED COMPUTER HELP? We can help with setup and basic instruction. PC/Mac. 747-3314.

FOR RENT

2 BEDROOM, 1 1/2 baths. See large ad elsewhere in this paper. Forest Village Apts. 678-1318.

EDUCATION

PRIVATE VIOLIN lessons, \$16/hr; \$8/1/2 hr- Kevin Lefohn, 683-5597.

EVENTS

AVON: Computerized skincare or color analysis. Look for the table in the Cafeteria April 19, or call Jessica at 746-0979 for appt.

COMICBOOK Sports Card Expo. Saturday, May 8th from 10-5 at the Lane County Fairgrounds. Admission \$1, tables \$25. Call 726-4181.

THE WRITERS' CLUB meets Thursdays, 3 p.m. at the Writing Center. This week: "What do writers have to talk about?"

MESSAGES

Support group now forming for persons dealing with Self-esteem problems. Call for info. 747-4051 ext 2178.

I can help you save 20% - 50% on your grocery budget. Jeff, 744-0295.

ULTIMATE FRISBEE - Is anyone out there interested? Everyone welcome. Call Matthew, 342-7206.

Watch for the Open House of the No Cash Clothing Stash. PE 301.

LOST: Red & blue pile vest near exit to 30th Ave. Please call 485-5705.

Ginger, Turmeric & Persephone - Get well. We love you!

Tortilla- HOT DIGGITY!!!

REMINDER TO THIS YEAR'S GRADUATES: Graduates wishing to have their name appear in the printed program for the June 4th graduation ceremonies need to have their degree application filed with the Student Records Office no later than Friday, April 30th by 4:30 p.m.

GEN ADMISSION TH-SA \$5 • SU-WE \$4 • SU MAT \$3 • SRS \$3.50 • KIDS \$2.50 • GIFT CERTIFICATES AVAILABLE! BARGAIN PASSES ON SALE NOW - 5 MOVIES FOR \$17.50, 10 FOR \$30, GOOD SU - TH

Nightly 5:00 (\$3) Sun Mat 2:15 STARRING ACADEMY AWARD WINNER-EMMA THOMPSON
HOWARDS' END
COMING: INDOCHINE

Nightly 7:40 Sat Mat 3:00 "A Gay, post-punk Thelma and Louise!"
"BUOYANT. MISCHIEVOUS."
THE LIVING END
FINAL WEEK! Nightly 9:35
THE CRYING GAME
492 E. 13th 686-2458

BIJOU LATE NITE • Late Nite Adm Th-Sa \$3 / Su-We \$2.50 • BIJOU LATE NITE • BIJOU LATE NITE

FINAL WEEK! Nightly 11:45
MIRANDA RICHARDSON
STEPHEN REA
JAYE DAVIDSON
THE CRYING GAME
COMING: ALIVE

4:45 (\$3), 7:25 Nightly Sun Mat 2:00
"The most accomplished movie of the year!"
MARY McDONNELL ALAN WOODWARD
A JOHN SAYLES FILM
PASSION FISH
The future is in the palm of your hand.
COMING: STRICTLY BAL ROOM

PICK UP THE NEW BIJOU FILM FEST CALENDAR & ENTER OUR FREE 6-MONTH PASS CONTEST!!

NC-17 NO ONE UNDER 17 ADMITTED
10:00 Nightly Sat Mat 2:45
"★★★★★ STRONG STUFF!"
Jami Bernard, NEW YORK POST
"TWO THUMBS UP. GREAT WORK."
Roger Ebert, SISKEL & EBERT
BAD LIEUTENANT
COMING: A FEW GOOD MEN

NC-17 NO ONE UNDER 17 ADMITTED
Nightly 12:00
HARVEY KEITEL IS THE BAD LIEUTENANT
COMING: A FEW GOOD MEN

GRAPHIC SCIENTIFIC SALE

FREE
Extended
Warranty

TEXAS INSTRUMENTS TI-81 Graphic Scientific Calculator

• 8 line by 16 character display • 13 calculating digits • 177 functions • Graphing feature keys
• One key variable access • Standard scientific calculator function keys • Advanced function keys • Computer like cursor keys • Parametric equation graphing(3) • 4632 bytes of memory
MSRP...\$110

SALE PRICE
\$77

Lane Community College Bookstore
Center Building

M-Th 8:00am-5:00pm

Fr 9:00am-4:30pm

phone: 726-2256

Extended hours first two weeks of Rush.

Employment opportunities on display

BY ARLENE HOUGLAND
staff writer

Over 50 representatives from local and statewide employers will set up display booths in the cafeteria during LCC's third Annual Career Fair. This year's theme is "Explore The Possibilities."

The event, which first began in 1991, offers students and the general public an opportunity to meet and talk with potential employers about future career options.

Joan Campillo Adams, director of LCC's Job Placement Office, says the event has grown steadily since it began. Many of the employers who have participated in the past have said they felt it was one of the best career fairs they have attended, she says.

Some of the employers who will have display booths at the career fair are Bonneville Power, KEZI-TV News, Marathon Coach, Omnitek Computers, Sacred Heart Health System, Peace Corps, and United Parcel. A



complete list of the employers who will be at the career fair can be obtained from the Job Placement Office.

Several LCC departments and local businesses have donated items for door prizes. Blankets By Becky has donated a Mauve/Blue hand-made afghan that will be raffled off at the career fair. Tickets for the raffle are \$1 each or 6 for \$5. All proceeds will go to support Career Fair '94.

Luci Edminster, employment marketing specialist with LCC's Cooperative Education department, says, she hopes students will take full advantage of the valuable information the professionals at the fair are offering.

"I encourage students to be opportunists at this annual event," Edminster says. For more information contact Joan Campillo Adams at the Job Placement Office at 747-4501 ext. 2326.

TRAIL continued from page 1

"Armed for Bear: The Arsenals of the Mountain Men, Pioneers, and Natives," gunsmith Bob Powelson of The Gun Works in Springfield will display representative examples of muzzle loading rifles, flintlocks, and knives from 1800 to the 1860s.

• Members of regional Native American tribes will provide both entertainment and discussion on Friday, May 3.

Offering drums, dancing, and frybread at noon, the Native American Student Association will then lead discussions on the topic, "Occupying Native American Lands — What Textbooks Don't Say About the

Oregon Trail."

Native American Adviser Frank Merrill, Native American students, and invited speakers will describe the immediate and long-lasting effects of European-American migration on Native cultures — of diseases, government treaties, warfare, forced relocation, and discrimination.

• In the last session on May 21, "A Wagon Train Menu," LCC staff members Loretta Plaa, Linda Pompel, and Beth Naylor will list the supplies necessary to sustain a wagon train during its five-month journey, and some of the foods women prepared each day.

LCC FOODSERVICES PRESENTS:

BIGGER DRINKS

New 44 oz. size for \$1.25

Get 25¢ off any Pepsi fountain drink with this ad.
Offer expires 4-16-93. One coupon per customer.

THE BEANERY

2541 HILYARD STREET IN EUGENE

12 oz. Latte
and a Scone
Only **\$1.85**

(Reg. \$2.55)

THE BEANERY, 2541 HILYARD STREET, EUGENE

Expires 4.30.93 Not valid with other discounts.

We are Eugene's whole bean coffee store with a full line of Allann Bros. fresh roasted gourmet coffees, coffee & espresso makers, candies, cups & mugs, cards and more.

OPEN 6 AM TO MIDNIGHT FRIDAY & SAT.
6 AM TO 10 PM SUNDAY THRU THURS.



Denali Magazine

is looking for a few good people

Gain valuable experience and have fun too

We are looking for:

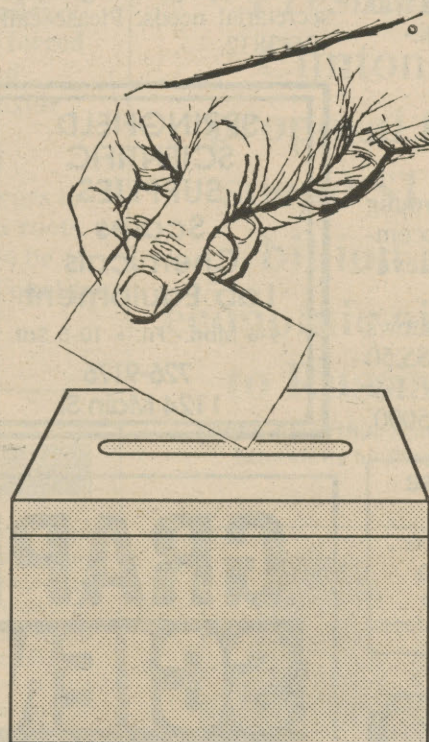
- Associate Editor
- Editorial board members
- Production staff members

Come to our office in the Center Building room 479F or call ext 2830 or 461-0452

Birthright
of Eugene

Free Pregnancy Testing
"We Care"
Eugene Medical Building
132 E. Broadway, Rm. 720
Eugene, OR 97401
687-8651

Elections Calendar



| DATE: | TIME: | ACTIVITY: | LOCATION: |
|---------------------|----------------------------|---|---|
| Tuesdays thru May 4 | 3:30 p.m. | Prospective candidates attend ASLCC meetings. | Boardroom Admin. 216 |
| March 30-April 12 | 8:30 a.m.-4:00 p.m. | Pickup and filing of applications. | Center 479 |
| April 12 | 12 noon (no exceptions) | Deadline for filing applications. | Center 479 |
| April 12 | 1:30 p.m.-2:30 p.m. | Verification of candidates. | LCC Records |
| April 15 & April 16 | 3-5:00 p.m.-9:00 a.m.-noon | Mandatory orientation of applicants. | Forum 309 Boardroom, Admin. Bldg. |
| April 19 | 8:00 a.m. | Campaign starts. Posting of campaign materials. | LCC Campus |
| May 5 | 8:00 p.m. | Last day to campaign. | LCC Campus |
| May 3, 4, 5 | 8:00 a.m. | ELECTIONS Vote for your candidate! | Polling Places: Cafeteria M&A bldg. Bus Area 2nd floor CEN Outside PE dept |
| May 6 | 8:00 a.m. | Candidates remove campaign materials. | LCC Campus |

ASLCC ELECTIONS

Anyone interested in applying for a position with the ASLCC should pick up an application packet from ASLCC Secretary Jeanee Beauchaine in Center 479. Please be sure to talk with Jeanee in person to assure that you receive all necessary information.

Elected Positions:

President
Vice President*
Treasurer
Cultural Director
9 Senators

*President and Vice President on the same ticket.

Appointed Positions:

Communications Director
Student Resource Center Director
1 Senator - High School Completion