

THE TORCH

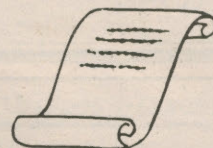
LANE COMMUNITY COLLEGE

January 27, 1995

4000 E. 30th Ave., Eugene, Oregon 97405

HONOR ROLL!

The Fall Term
President's and
Vice President's
Lists are ready.
Turn to pages 6 & 7



Volume 30, Issue 14

Will Congress cut financial aid in rush to balance federal budget?

Susan Tennison
For The Torch

Three financial aid programs may be cut from the federal government budget if the new Congress follows through with the "Fiscal Responsibility Act," a program to adopt a balanced federal budget through constitutional amendments.

Under recent resolutions, Congress may attempt to repeal the State Student Incentive Grant, Supplemental Educational Opportunity Grant and the Federal Family Educational Loan Subsidies — also known as Stafford Loan Subsidies — in an effort to cut spending to reduce the federal deficit, according to National Association of Student Financial Aid Administrators.

The repeal would result in an approximate loss of \$1.7 million to LCC students, says Linda DeWitt, director of LCC's Financial Aid Program. She says

she, "can't imagine where the future of education will be headed if this is okayed in Congress."

According to a recent NASFAA newsletter, Congress will target three major areas.

The first area is the in-school interest subsidy on Student Stafford Loans. Over the next five years, supporters of the cutback propose a savings of \$9.5 billion by eliminating the subsidized student loan program. The long-term affect on the students would be an increase of student repayment by approximately 20 percent, says NASFAA.

The second is a reduction and/or elimination of campus-based financial aid programs, such as Federal Work Study, Perkins Loans and the Supplemental Educational Opportunity Grant. All of these programs are currently 75 percent federally-funded and 25 percent college/university-funded.

Finally, congressional members plan to review the State Student Incentive

Grant, which combines \$930,000 in federal money, with \$12.5 million in state funds, and awards the money to students on a need basis.

If eliminated, it would mean that \$42,000 would no longer be distributed to needy LCC students, says DeWitt.

Jim Fisher, president of the National Association of Student Employment Administrators, stated in a recent newsletter, "We must be advocates for the youth of this country and not bankrupt the future of the next generation of leaders for the sake of some meager immediate tax savings."

DeWitt encourages students and citizens who wish to express their opinions to write letters to the Oregon congressional delegates, the ASLCC, Peter DeFazio's office or the House Speaker Newt Gingrich. The LCC chapter of OSPIRG, located in the basement of the Center Building, will assist students with letters and other communications.

Aid advisers scrutinize new Congress

Editor's note: The following excerpts of a commentary on the Republican-controlled Congress are taken from the Dec. 21, 1994 National Association of Student Financial Aid Advisors newsletter. Larry Zaglaniczny wrote the analysis.

House Committee Leaders

"... The House Republican leadership will be led by Congressman Newt Gingrich (R-GA) who will be Speaker of the House, Congressman Richard Armey (R-TX) who will be Majority Leader and Congressman Tom DeLay (R-TX) who will be Majority Whip"

"Authorizing Committee: The change in party rule elevates several familiar faces from minority status to chair important committees affecting postsecondary education issues. In the House of Representatives, Congressman Bill Goodling from the 18th District of Pennsylvania will become Chairman of the House Committee on Education and Labor which has been renamed the Committee on Economic and Educational Opportunities.

"Goodling replaces Congressman William D. Ford (D-MI) who retires this year. Rep. Goodling has been a strong supporter of education throughout his tenure in Congress, perhaps in part because he was a school superintendent prior to coming to Washington.

"He is considered a moderate and was even considered as a candidate to become Secretary of Education during the Bush administration. Instead, he stayed in Congress and will now become the Chairman of the full authorizing committee. He has been in Congress for 11 terms, and, therefore, is very familiar with the existing legislation and how the programs work. He and his staff have always been fairly supportive of the title IV programs and we would expect him to continue in that mode.

"However, we expect his committee to hold some oversight hearings on existing programs early in the next congressional session. The House Subcommittee on Postsecondary Education and Training, also has been renamed and will be known as the Subcommittee on Postsecondary Education, Training and Life-Long Learning. Congressman Buck McKeon of California's 25th District will head that panel"

House Budget Committee

"The House Committee on the Budget will be chaired by Congressman John Kasich, Republican from the 12th District of Ohio. He was first sworn into Congress in January, 1983, and has been serving as the ranking Republican on the Committee on the Budget. He has been on the House Committee on Armed Services, has been a real hawk on the deficit and will clearly want to reduce overall federal spending. He has previously

Visitors learn about ATLAS



LLOYD GRIFFIN/THE TORCH

A college spokesperson demonstrates the ATLAS information system to technical administrative representatives from Oregon community colleges Jan. 26. The representatives were interested in the accessibility, quickness and financial savings the popular LCC system has to offer their institutions.

College may address student needs in bond levy

Christian Hill
Editor

The college administration will ask the LCC Board of Education to plan sufficient funding in the May \$39 million bond levy proposal to accommodate student needs.

LCC student organization leaders and representatives from the Student Services Branch met Jan. 25 with Campus Services Director Paul Colvin and Assistant to the President Linda Waddell to discuss the feasibility of a student center in the bond measure.

The LCC Board of Education has approved a May 16 election date for the proposed bond levy. The bond would allow LCC to construct new classroom buildings and make improvements to existing structures.

The current proposal does mention a possible "relocation" of some student activities and services to a renovated lower level of the Apprenticeship Building. But student leaders and advocates questioned the location, saying it would be an afterthought.

Although an early draft of the bond proposal listed a student center, a refined version makes no mention of a student center. When a college and community committee pared down the preliminary \$64 million proposal, the group removed the student center from a list of college space needs.

ASLCC President Jason Rackley compared the current campus layout to a "robot factory," where students have limited space for studying, socializing, and group headquarters.

"We do not have a caring environ-

ment right now," agreed Student Activities Director Barbara Delansky. She referred to the college's mission statement: "To provide a quality learning experience in a caring environment."

Linda Fossen, vice president of Student Services, said student space has been at the "bottom of the totem pole" in LCC's 30 year history, and said it's time to correct the notion.

OSPIRG campus organizer Ellen Huffaker said the college needs a centralized location where students and campus organizations could form a "support network."

Torch adviser Pete Peterson said students need to feel a sense of community at LCC.

"Our biggest pool of students is al-

Turn to BOND page 8

Turn to CONGRESS page 10

•Editorial

Student center shouldn't be a dream

I dreamed last night of an LCC student center.

It was a lively place where students could study without interruption, socialize with others, participate in college activities, learn from one another — enjoy campus life.

Student clubs and organizations were centralized, easily visible and accessible. And each had enough office space to adequately benefit its staff and members.

Then I awoke . . .

To discover the reality that a real student center — a separate union building — is certainly not part of the college's plan for the future.

The original \$64 million college bond levy proposal for additional buildings and upgraded structures would have included a student center in the May request to voters.

But a community committee axed out the student center this summer, when it pared down the levy request to \$39 million. While the college has since refined the plan, proposing to move some student activities to the lower level of the Apprenticeship Building is completely unreasonable. It still treats student needs as an afterthought. At least, Campus Services Director Paul Colvin has acknowledged the idea was only conceptual, and not a fixed plan.

Thankfully, ASLCC President Jason Rackley reopened the discussion at the Jan. 11 LCC Board of Education meeting. And, thankfully, Colvin agreed to a Jan. 25 meeting with student club and organization leaders, members of the Student Services Branch, and Assistant to the President Linda Waddell.

As a result, the administration has now agreed to recommend to the Board of Education some allocation of funds in the bond levy to meet student needs.

If the board accepts the recommendation, it'll be time for LCC students to breathe life into the project by offering their support.

One of the most important reasons LCC needs a student center is LCC is not only a college for the community; it's a community within itself. By dispersing student elements around the campus, the college limits interaction. There needs to be a centralized location to meet students' social and organizational needs — "one-stop shopping," as SRC Director Tom Lee has said.

The Torch urges all interested students to attend a Student Services Branch meeting Tuesday, Jan. 31, from 8:30 to 9:30 a.m. in the Administration Building Board Room and give the college reasonable suggestions about a student center concept.

We also urge students to attend the Feb. 8 Board of Education meeting at 6 p.m. in the Board Room.

Finally, The Torch urges the board to accept the student's and administration's proposals.

Students can't place the blame on the administration or the board if LCC overlooks a student center. We also have an obligation to see this through if we agree the time has come for a student center.

So attend the two coming meetings.

Otherwise, the progress for student center money in the bond levy will dissolve — as quickly as a dream.

• Super Bowl

49ers-Chargers contest will offer very little excitement

By DANNY PEARSON

I used to look forward to the Super Bowl.

The first one I can recall watching was Pittsburgh vs. Dallas in 1978 at the Orange Bowl in Miami. Roger Staubach was knocked senseless early in the game and a little known punter named Danny White stepped onto the grid iron and almost beat a Steeler team with names like Bradshaw, Swann and Greene on its roster.

I was only 7 years old at the time and I spent most of the game running around the house with a Nerf football throwing it into the air and marking diving catches in front of the television. I couldn't get into the game unless I could experience it first-hand.

Then came 1982, and a handsome young quarterback named Joe Montana who threw up a prayer over three belligerent Dallas defensemen, just before stepping out-of-bounds. The ball went into the hands of Dwight Clark for what would come to be known as "The Catch." Montana took the 49ers on to victory in the Super Bowl that year over Cincinnati, and started the San Francisco juggernaut rolling through the NFL.

Even the Buffalo Bills were part of an exciting Super Bowl. Remember when they faced the New York Giants in 1991, only to lose on the last play of the game? Yes a field goal attempt that sailed just wide. That game was a fan's dream, a storybook finish.

One thing you can always count on is seeing the greatest talent in professional football square off in late January to decide the world championship.

Except this year.

San Francisco is back. With players like quarterback Steve Young, receiver Jerry Rice and cornerback Deion Sanders, how could the team have missed?

The 49ers sport three Pro Bowlers in its secondary who were effective enough against the Dallas passing attack last week to make the Cowboys look like a flag football team.

If it can win at Joe Robbie Stadium this Sunday, San Francisco will have done what not even Vince Lombardi could manage to do: win five Super Bowls.

It should be a piece of cake. After all, they are playing the San Diego Chargers: a team who has openly described its success this year as "lucky," a team which has a group of wide receivers with about as much experience in the NFL as a one-year-old has going to the bathroom.

They also have a tendency to drop passes thrown in a rather conspicuous place; right in their hands.

Whatever happens in Miami on Jan. 29 makes no difference to me. The Super Bowl was played in San Francisco two weeks ago and the 49ers won. The Chargers should do themselves a favor and stay home.

It's sad to admit, but I can find better ways to spend my time on Super Bowl Sunday than sitting around waiting for the next round of new commercials to air between plays.

The Golf Channel started airing 24 hours of drives and putts last week. Maybe I can catch a story about spectators being struck by lightning.

WE STAND CORRECTED: CHANGES FROM THE LAST ISSUE OF THE TORCH.

The depression screening, mentioned in, "Depression comes out of the closet," was a community service function of the Sigma Zeta chapter of Phi Theta Kappa. This was omitted in the article.

letters to the editor

No easy solutions for privacy

Mr. Hill, if you think changing the student's I.D. numbers instead of using their Social Security Numbers will give a student more privacy, I think you have been eating too many Oregon mushrooms. What you need to do is get out of your fantasy world and be in the real world for just a few minutes.

Let me explain what I mean, because privacy is an extinct word in a world of computers, to expect it from any collection of computer information is stupid. Anyone can gain access to your records or vital information without a SSN. For example, look at credit card numbers. These are supposed to be private, but how many of these numbers are being used without the owner's permission. People steal these numbers and use them for their own personal gain without even having to see the cards themselves. Even if the student I.D. number was changed, I think that the possibility that someone could gain access to my records would still be there. And if they gained access to my records, then they would get my SSN because it has to be there for my financial aid information.

Besides, you don't see too many

criminals stealing student transcripts. I can see it now. Imagine some guy in the cafeteria saying, "Hey bud, I have some great transcripts here for a dollar." I don't think so, Tim. And another thing, it will cost the school a fortune to change all of the students' numbers. And who do you think is going to pay for this change? Do you think the LCC Board will pay for this?

This is where the real world comes in, Mr. Hill. The Administration will raise our tuition to pay for it, just like they're going to do to pay for that 6% faculty raise that you think is so great. And what about the students who are getting their degrees over a five or six year period. Most of these students usually skip a term or two before coming back. If the school changes their student number, then all of them will need a new student I.D. card, at the very least. Your suggestion would probably mean that the college would have to produce over 10,000 new I.D. cards all at once.

Even if the school changed all the student I.D. numbers, do you really think that we will have any more privacy than we have now? I don't think so.

Anyone with a computer modem and a little patience will be able to get

Turn to LETTERS page 11

THE TORCH STAFF

EDITOR

Christian Hill

MANAGING EDITOR

Craig Beauchamp

A & E EDITOR

Mary Klacsan

SPORTS EDITOR

Gregg Newgard

LEAD WRITER

Pam Larson

STAFF WRITERS

William Boise

Michael Bowes

Michael Cough

Gary Griffin

Chris Hansen

Sunny Justus

Tom Lee

Annette Roy

Larry Thompson

PRODUCTION MANAGERS

Deb McManman

Linda Zink

PRODUCTION ADVISOR

Dorothy Wearne

PRODUCTION ASSISTANTS

Heather Griffin

Nathan Hearn

Kirsten Hokanson

Eric Logue

Christi Ohrmund

Marleena Pearson

Tamra Roberts

PHOTO EDITOR

Brian Hendrickson

ASS'T. PHOTO EDITOR

Lloyd Griffin

PHOTOGRAPHERS

Robin Koster

Steve Norris

James Sherman

CARTOONISTS/ILLUSTRATORS

Nathan Hearn

Eric Logue

David Williams

ADVERTISING ASSISTANT

Linda Higdon

ADVERTISING ADVISOR

Jan Brown

NEWS & EDITORIAL ADVISOR

Pete Peterson

DISTRIBUTION MANAGER

Brandon Dodge

THE TORCH IS PRINTED AT THE SPRINGFIELD NEWS, SPRINGFIELD, OREGON

THE TORCH is a student-managed newspaper; published Fridays, Oct.-May. News stories are compressed, concise reports intended to be as fair as possible. Stories will carry the reporter's byline. Unsigned editorials are the opinion of the Editorial Board. Commentaries and essays may be contributed by Torch readers and should be limited to 750 words. Deadline: Fri. 5 p.m. for the next issue. Letters to the Editor should be under 250 words and must include the author's phone number and address. Deadline: Mon. 5 p.m. for the next issue. Calendar listings are free to students and staff and are due Tues. noon for the next issue. Classified ads are free to students and staff with a 15 word maximum, and are printed on a space-available basis. Deadline: 5 p.m. Fri. for the next issue. Forms are available at the drop box outside The Torch.

The Editor reserves the right to edit submissions for grammar, spelling, libel, invasion of privacy and length. Submissions must be typed and signed by the writer.

Mail or bring all articles, stories, contest entries or commentaries to:

The Torch, Center Building, Room 205, 4000 E. 30th Ave., Eugene, OR 97405

Phone: (503) 747-4501, ext. 2014



LLOYD GRIFFIN/THE TORCH

Specialized Employment Services has taken over the campus recycling program from Weyerhaeuser.

SES receives contract

M. G. Laubach
For The Torch

Without calling for competitive bids, LCC has awarded its paper recycling contract to the campus based, Specialized Employment Services Program for \$750 per month, effective Jan. 1, says SES Director Rick Venturi.

Venturi says a 10 member SES crew recycled books for the last three years with Weyerhaeuser. SES provides a vocational program for people with developmental disabilities, teaching them job skills and on-the-job behavioral skills.

The Weyerhaeuser Company held the contract for the last three years until it expired in December. The company recycled 35 percent of LCC's waste paper with a crew of six people, including one full-time employee.

"Our goals are to increase people's awareness on the value of recycling, and get people trained," said Venturi. "I'm going to start with a survey to help people recycle better."

He wants to place recycling stations at employees' desk that

is, where they can separate the paper right there. "If we can do that, we can double the amount of paper that is recycled at the college. After we get recycling of paper awareness, we can move on to more recycling efforts."

Venturi intends to ask ASLCC and OSPIRG to help with the campus recycling educational campaign. He intends to train 10 additional people to sort paper, and pay them for their work.

Weyerhaeuser will pick up the sorted paper without charge. Venturi said the company is pleased with the arrangement, because SES has a permanent program on campus. Weyerhaeuser supports other community projects, such as 4J's recycling project and vocational training programs.

"LCC did not put the paper recycling contract out for bid because Specialized Services is a part of the college, and Weyerhaeuser said it sounded good to them. SES is a Qualified Rehabilitation Facility, and public agencies are allowed to award contracts to QRFs without putting them up for bid."

Community benefits from program for disabled workers

Sunny Justus
Staff Writer

They work in the cafeteria busing tables and washing dishes. They make sandwiches and bake muffins for the Deli.

At the Specialized Employment Center, they stuff envelopes, put small assemblies together, bulk mail, separate papers and operate packaging machines. There's also one crew that does laundry and one that recycles papers and books for LCC and Weyerhaeuser, jobs requiring the operation of large machines.

The 55 developmentally disabled workers at LCC perform public service, learn skills and get paid for their efforts.

In the long-run, the federal subsidy to pay their wages saves taxpayers money, says Rick Venturi, director of Specialized Employment Services.

Venturi started interacting with the developmentally disabled clients 24 years ago as an LCC student in the Work Study Program at Pearl Buck Center. He stayed there in a regular job for 16 years. The skills and experience have led him into a managerial position for the past 10 years. He sees the value in public-sponsored programs and is quick to point to LCC's efficient use of other federal programs.

The developmentally disabled students in SES are encouraged to integrate into the community and are trained at tasks that are compatible with their abilities and coordination.

Recycling papers and books for Weyerhaeuser is safe, says Venturi.

"It requires you to hit two buttons at the same time. So your hands have to be on the buttons in order for the grates to come down," says Venturi. "They wear steel webbed gloves in case they hit the blade with their hand. We've never had a serious accident. The cafeteria is actually a much more dangerous place to work with wet floors and all the stuff that has to be carried," says Venturi.

Vocational programs like these are mainly sponsored by the state general fund and a fraction by the private sector. The Oregon Rehabilitation Association states for every dollar in public funds received, these privatized services generate an additional \$1.33 from private sources. It also states the privatized services are four times more cost effective compared to state institutions which cost an average of over \$120,000 to care for one person for a year. This, multiplied by thousands of people, saves the state millions of dollars every year, according to the Oregon Rehabilitation Association.

Venturi is aware that because of the recent political shift in the legislature, policy makers attempting to cut the federal budget might slice up such programs.

"The legislators say they understand when they vote on the budget that if they cut our programs it's going to cost the state more money

Turn to WORKERS page 10

Pheasant Park Apartments

Now Renting and Taking Applications!

747-5411

Starting at 1 bedroom — \$365
2 bedrooms — \$455
3 bedrooms — \$515

- ✓ Beautiful landscaped grounds
- ✓ Laundry facilities
- ✓ Playground
- ✓ Tanning salon
- ✓ New recreation room and more ...

Call now for more information Stop by, 475 Lindale N., Springfield

OSPIRG plans term

Michael Cough
Staff Writer

On Jan. 25, over 30 students attended the Oregon Student Public Interest Research Group membership meeting to discuss OSPIRG's five campaigns for this winter term.

The meeting began with former chapter chair Blake Beardsly giving background on the origins of the OSPIRG concept started in 1970 by con-

sumer activist Ralph Nader.

Current chapter chair Mindy Meier introduced this term's five campaigns and their coordinators:

- "Clean Air," a project to improve the clean air act, coordinated by David Jost.
- "Free the Planet," an effort to increase environmental awareness, coordinated by Rachelle Dilley and Chales Ellis.

Turn to OSPIRG page 10

Your ASLCC
Student Body Card
Entitles you to:

- Use of the LCC Library
- Use of the UO Library
- Tickets at the LCC Performing Arts ASLCC
- Child Care Co-op
- Legal Services
- Health Services
- Recreational Fitness
- Activities at LCC
- 15% Discounts at Dot Dotsons
- 10% off all services at Creative ID
- 1611 Oak
- Hult Center Performances
- Movie passes at some theaters
- 15% Discount off Auto Repairs (labor)
- Absolutely Wholesale
- 683-0912
- to make apt.

You must be a registered student taking credit classes on LCC's Main Campus to have paid the ASLCC Student Body Fee.

Ski Ball

at

Mt. Hood

Tickets are \$9

Includes:

Transportation and Lift Tickets!

Food — on your own.

Schedule of Events:

Check in and sign ups are all at

Ski Bowl East Lodge

Bus leaves LCC at Noon!

Skiing 4:00 p.m. - Midnight

DJ in East Lodge Room

5:00 - 8:00 p.m. and 10:30 p.m. - 1:00 a.m.

Registration ends at 7:30 p.m.

for NASTAR Ski Race

Tug-O-War 8:00 p.m.

Live Band in East Lodge Room 8:00 - 10:30 p.m.

NASTAR Ski Race 9:00 p.m.

Sculpture/Snowman contest 9:00 p.m.

Bus leaves Mt. Hood at approx. - 1:00 a.m.

Arrive back at LCC approx. - 5:00 a.m.

Free Popcorn all evening

Attend the
next
ASLCC Meeting.
Monday, 30
January 30
4:00 p.m.
PE 205



ASLCC
Fundraising
Committee

is having a

Computer
Raffle

to provide expansion
for the
Child Care Co-op.

We need more space
to serve
more student
families!

Tickets are \$2 each
or 3 for \$5.

Available at the SRC
and Child Care Co-op,
or call Shawna at
465-9555.

Italian Family Style Restaurant

- New Dining Room
- Dinner Menu
- Best Pizza in Town
- Microbrews! Wine!
- Big Screen TV!

Live Jazz

Thurs. — Sat.
WE DELIVER
Phone 744-0811

1475 Mohawk, Springfield

744-0811

STEPINAS

FAMOUS CHICAGO STYLE PIZZA

Joe Murphy honored, memorial scholarship fund established

Thomas Lee
Staff Writer

A Joe Murphy Memorial Scholarship Fund has been established for Helicopter flight students.

The family of Daniel Joseph "Joe" Murphy has given the college \$10,675 to establish a memorial scholarship fund for helicopter flight training students.

Murphy died on Aug. 28, 1991 during a rescue mission in the Coast Range near Walton, Oregon. He was the "pilot of choice" among emergency medical technicians charged with rescues in remote logging areas. He completed 117 rescue missions in 21 years as corporate pilot for Bohemia, Inc. He left the company president stranded four times to fly rescue missions, his first priority. He received the Helicopter Pilot Safety Award in 1978, the Trimble Memorial Award in

1979 and the Golden Hour Award in 1983.

"Joe Murphy was a highly regarded pilot in the local aviation community. He had substantial compassion and his commitment to rescue spanned ten years. The loss of Joe is felt state-wide in the aviation community," says Farrand.

The donation will earn about \$500 a year in interest, which the college will use to support one helicopter student.

Qualifying students must have a 3.0 grade point average or higher, show a financial need and have completed the first year of the flight program, along with private pilot ground school, helicopter fundamentals and commercial pilot ground school.

"I think it's great and a wonderful way for families to pay tribute to a loved one. It's a great way to ensure there will be use of the money for a long

time. I am seeing a lot more of this kind of support," said LCC Foundation Director Joe Farmer.

The scholarship will be

“

Joe Murphy was a highly regarded pilot in the local aviation community. He had substantial compassion and his commitment to rescue spanned ten years. The loss of Joe is felt state-wide in the aviation community.

— BOB FARRAND

”

awarded each spring term by a faculty committee organized by Bob Farrand, department chair of the Flight Technology Department.

"The scholarship is the first exclusively for helicopter students in the flight program," says Farrand. "The amount will be sufficient to pay for books and tuition for one term by a full-time student."

For further information about the scholarship, contact the LCC Foundation at 726-2226.



BRIAN HENDRICKSON/THE TORCH

Construction continues on LCC's new Aviation Maintenance Technology Center located at the Eugene Airport.

College constructing Aviation Maintenance Technology Center next to Eugene Airport

Brad Davis
For the Torch

The LCC Aviation Maintenance Technology Center at the Eugene airport is now under construction.

The college hopes the project will be completed in two phases.

The first phase is a 23,000 square foot building with classrooms and shops for the Return to Service Program, which teaches students maintenance of aircraft.

Phase two would include expanding the structure with a 77,000 square foot addition. Campus Services director, Paul Colvin says he hopes to have it done in two phases, but realistically it will take many phases before completed.

The construction is now in phase one, which includes moving the Return to Service Program from its Creswell location to the Eugene airport.

The long range goal of the Aviation Technology Center is to move all aviation classes

from the LCC campus to the Eugene Airport. Colvin expects the project to take five to 10 years to complete.

He says the cost for both phases will be about \$1.3 million. "About half of the funds will come from the college and the other half will come from federal funds," he says.

With the new center in place, LCC will be able to take more people into the program.

Colvin estimates that around 100 students are enrolled in the program now and expects the program to grow to 300 once the project is completed.

"The city really wanted us out there. They felt having an aviation training facility out there would increase the chances of attracting industrial tenants," said Colvin.

Once the aviation program has left the campus, the college will most likely convert the space for the Recreational Vehicle Maintenance Program. Colvin says he isn't sure what programs would take over the buildings.

The Renaissance Room

MENU week of Feb. 1-2
Cassis Delight
Scotch Broth
House Salad, Choice of Dressings
Spicy Beef Chungkin, Chinese Noodles
Crab & Shrimp Hot Sandwich, Fresh Fruits
Almond Cream Torte \$5.50

Lunch is served Tuesday
Wednesday & Thursday
11:30 to 1 p.m.

RESERVATIONS SUGGESTED

LCC Culinary Arts Students Present:

Classical Cuisine Dinner

Fiesta Latina
Five Course Dinner
\$14.50 - per person

Thursday, February 16, 1995
6:00 p.m.

No Host Bar Serving
Mexican Beer & Wine
Reservation deadline January 31st.

We couldn't

FAKE

services as great as these.
Interest-earning Checking Accounts
Visa Duet Credit Card
Student Loans • New Vehicle Loans
Used Vehicle Loans

Call 686-9251.



"We Work For Our Members"

DOWNTOWN EUGENE • VALLEY RIVER • SPRINGFIELD

WOMEN'S DAY AT LANE

SATURDAY, JANUARY 28, 8:30 - 4:00 P.M.

Cafeteria

Explore your career options

Learn about Career planning, financial aid,
employment trends, and more

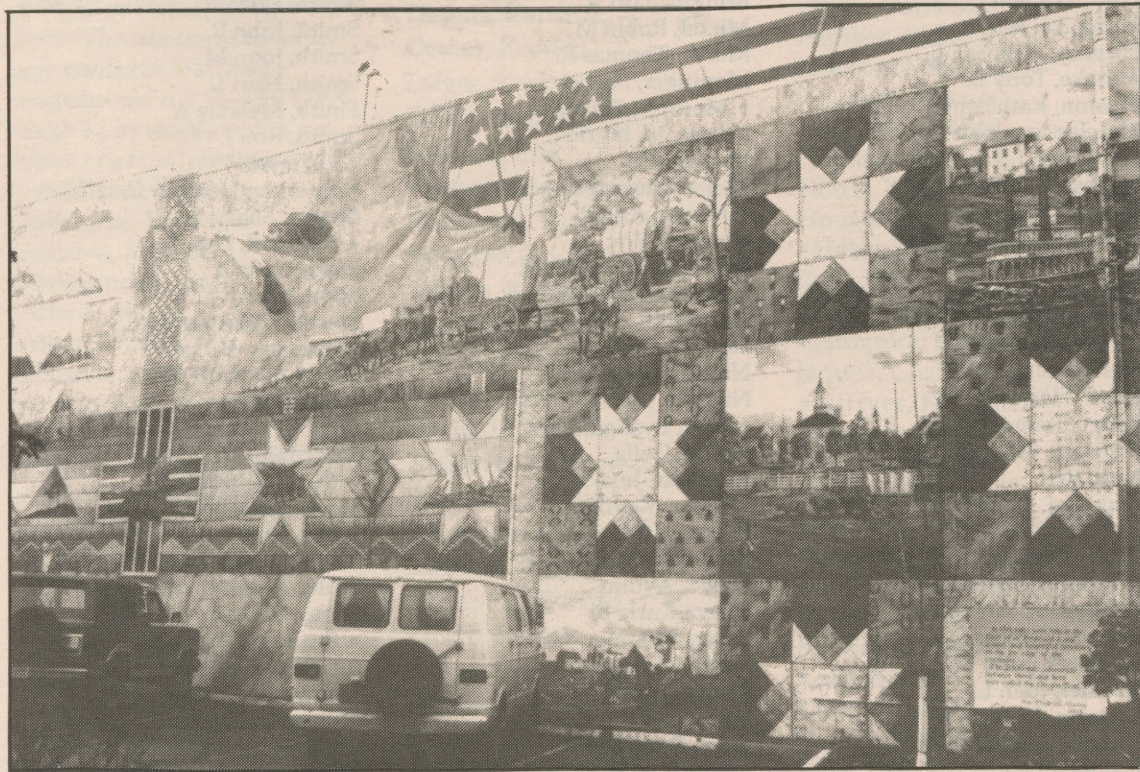
Tour career training programs

A FREE EVENT

For more information or to register by phone,
call the Women's Program, 747-4501, ext. 2353

LANE
COMMUNITY
COLLEGE

Media Arts student earns grant from art commission



ROBIN KOSTER/THE TORCH

The mural in downtown Springfield was created in 1993 by Anne Murry.

Michael Cough
Staff Writer

LCC Media Arts and Technology student Will Boise isn't waiting for his degree—he's already involved in media writing.

Boise has earned a grant from the Springfield Arts Commission to produce an educational brochure about the Springfield Oregon Trail Mural which artist Anne Murry painted on the Gerlach Building in downtown Springfield.

The mural, which dons the working title "Anne Murry's Oregon Trail," has been visible since 1993, but relatively few people have actually taken the time to appreciate it, says Boise.

When Boise stopped to look at the mural during an internship last year with freelance writer Ross West, he saw the mural as "a vastly underutilized resource for the city" and as a "bright spot" in an area that had been called a "eyesore," even by Springfield's Mayor Bill Morrisette.

Boise says he thought of ways the mural could get more

exposure, and wrote a 10-page feasibility report which he submitted to the city.

It was plain luck when, several months later, Springfield Mayor Bill Morrisette discussed the mural with the Springfield Arts Commission the same day Boise gave his proposal. Morrisette wanted to promote the mural, which was exactly what Boise proposed. After Boise's formal presentation to the commission, the art group committed \$1,000 in seed money, giving him the go-ahead to begin his project. Together with artist Murray, Boise will put together a full-color brochure on the mural.

Boise is now discussing the costs of producing the brochure with the Commission and the Springfield City Council, but he says he doesn't plan on making a profit on the project.

He's doing it to gain experience and to publicize a great piece of art, he says.

Boise has six other options to bring attention to the mural. While he hopes to implement each one, at this point he is concentrating on the brochure.

Group offers help for depression

Pam Larson
Lead Writer

Students have an opportunity to learn more about depression in a group beginning Wednesday, Feb. 1, for support and information.

The group, which will meet from 8:30-10:00 a.m. Wednesdays, will focus on three areas: learning about depression, medication and self-intervention techniques.

UO doctoral intern Chris Poasa will facilitate the information and support group, which will teach participants how to change behavior and thought processes, "even though you don't feel like it," says Poasa.

Members who presently take anti-depressant medication will share what it's like, so other group participants can decide whether they also want to take medication for depression, says Poasa.

The group can accommodate 12 participants. It will not admit new members after the first meeting.

Enrollment will be based on an interview with Poasa. Call 747-4501, ext. 2240 or leave a message at ext. 2204.

AT OREGON TECH

TECHNOLOGY IS A PERFORMING ART

Get a ring-side seat for Oregon Institute of Technology's live talk show.

Oregon Tech offers you an opportunity to see technology in a new light. We provide the rehearsal space for the fast-paced, rapidly changing, performance-oriented world of high technology.

Join us for a fun-filled evening that could change your life. Meet the cast of characters at Oregon Tech's talk show-style College Information Night. You'll see our video (pick up a copy of your own if you choose) and learn how a bachelor's degree can lead to a starring role in the engineering, health and management technologies.

Mark your calendar and plan to attend

Eugene

Wednesday, February 1
Red Lion, Ballroom
205 Coburg Road

Roseburg

Thursday, February 2
Holiday Inn Express

Refreshments will be served at 6:30 p.m.
and the performance begins at 7 p.m.

You will have the opportunity to interact improvisationally with representatives from Oregon Tech's Admissions and Financial Aid Offices, faculty members, students and campus dignitaries.

Oregon Tech is a member of the Oregon State System of Higher Education.

♿ All performance locations are wheelchair accessible.

For more information, call 1-800-422-2017

Happy 40th Birthday
Jeannie!
from your YOUNGER sister

Fall term '94 President's List

The following students have maintained a 4.00 GPA with 12 or more graded credits for one term. Names in boldface are President's Scholars List students who have maintained a 4.00 GPA with 12 or more graded credits for three consecutive terms.

Abbott, Marcelline B.
Abshire, Darrel A.
• **Adair, Anita M.**
Adams, Donna Jean
Adams, Jaymi S.
Akins, James L.
Amber, Grace A.
Anderson, Clarence Irving
Anderson, Susan L.
Andrew, Blake E.
Ardito, Cassie D.
Arif, Maynard P.
Aronow, Michael J.
• **Arriaga, Donato L.**
Babcock, Nancy
Bailey, Lisa J.
Baker, Gregory L.
• **Bandey, Barbara A.**
Barbera, Cecilia R.
Barrett, Terry M.
• **Barrong, Diana R.**
Bates, James F.
Batten, Dorothy L.
Beach, Sherry K.
Bechtold, Marlo M.
Becker, Mary K.
Belhassen, Susan L.
Bellinger, Rose E.
Berg, Alan
Bergstrom, Judith M.
Bernard, Michael J.
Bernardo, Jeffrey R.
Bevan, Lora L.
Bieberdorf, Robin A.
Biencourt, Rebecca A.
Bischel, James K.
Bishoff, Danielle S.
• **Bliss, Steven C.**
Blunck, Beverly C.
Bogart, Rosella M.
Boggs, Angelika M. L.
Boutton, Adrian J.
Boyd, Randall D.
Boyer, David N.
Bradley, Leslie K.
• **Bratton, Robert H.**
Brisson, William T.
Brochard, Denise C.
Brock, Julie
Bryant, Ryland C.
Buckner, Juveen M.
Bumcrot, Richard D.
Cade, Alysha M.
• **Cameron, Linda C.**
Cantrell, Isabel
Carlan, Anne M.
Carlson, Rachel A.
• **Carroll, William H.**
Cecil, David M.
Cesaletti, Eli
Chaoss, Mandi E.
Chinn, Kathy T.
Christensen, Gina E.
Chung, Fui Fong
Clyne, Timothy M.
Conlin, Thomas E.
Coontz, Cathleen M.
Cooper, Randy L.
Crissman, Cheryl A.
Cruthers, Clinton J.

Curin, Karen L.
Curry, Wayne M.
Dare, Randy L.
De Young, Yancey N.
Deitle, Ella Beth
Deitle, Roy B.
Delf, Carolyn L.
Dickson, Kenneth L.
Didriksen, Andreas E.
Diehm, Sally
Dixon, Jane I.
Donnelly, Natasha
Duff, Stephanie A.
Duncan, Jerry L.
Edwards, Amara L.
Edwards, Chad E.
• **Edwards, Gary L.**
Edwards, Jerry L.
Ellis, John J.
Ellis, Peter N.
Erne, Troy D.
Farmer, Angela R.
Ferguson, Liesbeth M.
Fine, Daniel I.
• **Fischer, Dylan G.**
Fleming, Calliope D.
Floreen, Amy N.
Foreman, Leesa M.
Fournier, Stacy L.
Fox, Carolyn
Frear, Susan D.
• **Freske, David C.**
Fuller, Donald C.
Gabbert Holt, S. Michelle
Gaylin, Karl K.
Genz, Amy C.
Getubig, Lawrence J.
Gianuzzi, Sheri L.
Gibbs, Jackson
Giesen, Erika M.
Goldreyer, Anna L.
Gordon, Karen
Gould, Mandi L.
Grabowski, Susan K.
Graf, Bessie L.
Gray, Lizajane
Greene, Toni L.
Gregersen, Tanya M.
Guempelein, David L.
Guhl, Darcy D.
Guthrie, Matthew L.
Hall, Heather M.
Halstead, Kirsia A.
• **Hamill, Ronald**
• **Hammock, Timothy S.**
Hansen, Lindsay E.
Harris, Hugh J.
Harris, Mariah B.
Harris, Tamara L.
Harrold, Clifton G.
Harter, Yolanda K.
Harvey, Deborah M.
Hathcock, Elizabeth
Hazelton, Angela S.
Heiman, Hallie
Hendrickson, Bridget M.
Henning, James P.
Herborn, Cammie S.
Herrold, Sheri L.
Hewlett, Alfred G.
Higgins, Rachel L.
Hirao, Yoko
Hjelm, James A.
Hoffman, Michael P.
Holbrook, Jules A.
Holman, Dennis L.
Honeywell, Rebecca A.
Houde, Lincoln J.
• **Hu, Huamiao**

Huberd, John C.
Huff, William J.
Hung, Lai Mui
Hupcey, Deborah J.
Husske, Tony L.
Huston, Kathleen E.
Hutchinson, Joan M.
Ivy, Linda L.
Jacobsen, Darlene F.
James, Gregory A.
Jennings, Christine L.
Johnson, Jackie M.
Johnson, Nancy F.
Keener, Jessica D.
Kemler, Steve W.
Kesterson, Todd
Kime, Harry M.
King, Gwendolyn M.
Kintzley, Scott D.
Kirk, Roy
Kirkland, Di Di
Kito, Linda K.
Kloft, Kevin E.
• **Knapp, Freyja L.**
Kobayashi, Kazuhito
Kocian, Tammy L.
Kominick, Judy M.
Kromer, John L.
Krueger, William N.
Kuhnel, Kevin P.
Kytola, Eric J.
La Mere, Raymond E.
Lachance, Dee A.
Lane, Sandy
Lasse, Cathy M.
Lazuardi, Meilani
Lee, Laura R.
Lee, Veronica J. Y.
Lehl, Jodi M.
Leighty, Kathleen E.
Lewis, Deborah K.
Lineburh, Brian J.
Littell, Karen A.
Lopez, Jennifer P.
Loyd, Nancy E.
• **Ludwig, David M.**
Luna, Tonya S.
Lupton, Sukey
Lynch, Valerie Lee Ann
• **Lynn, Scott A.**
Mac Lean, Keven J.
Mac Phail, Devitt L.
Madrid, Reynaldo
Magee, Shannon A.
Maier, Kathryn A.
Maniscalco, Vincent
• **Marra, Dennis E.**
Martell, Susannah
Martichuski, Trina L.
Martin, Patrick M.
Martin, Virgil D.
Mason, William
Mathews, Bryan
Maurer, John
May, Anne M.
Mayer, Kathryn L.
Mayfield, Diane D.
Mc Bride, Michael R.
Mc Coy, Joseph C.
Mc Dougal, Shawn E.
Mc Lean, April D.
Mc Quigg, Jesse D.
Meddings, Juniper J.
Meeker, Jason R.
Meidinger, Charity S.
Mestler, Karyn E.
Metteer, Terry L., Jr
Miller, Richard K.
Miller, Robert L.

Miner, Kymberlee J.
Mingus, Lori A.
Mitzel, Robin M.
Moffit, Thomas R.
Moninger, Shelley I.
• **Montesi, Primo L.**
Moore, M. Ingrid
Morelli, Pat
Morse, Murryha L.
• **Mross, Ana P.**
Muench, Eric
Munkres, Benjamin E.
• **Murray, Rachel D.**
Navarrete, Trilce
Neilson, Andy R.
Nelson, Rochelle C.
Nichols, David
Nixon, Evangeline
Nolan, Delia
Nuckolls, Joye I.
O'Brien, Kevin G.
O'Leary, Carolyn M.
Oakes, Donna
Ogiso, Ayumi
Olsen, Karla R.
Olsen, Summer Y.
Parker, Lara M.
Pearce, Robbie
Perko, Neil
Pesic, Branislav K.
• **Pew, Deborah L.**
• **Pfau, William B.**
Phillips, Michele R.
Piccolo, Bruno I.
Ploychronis, Stacey M.
Porrazzo, Karen L.
Potter, Bradley W.
Powell, Shelleen B.
Pratt, Jeremy C.
Prebus, Peter A.
Premazzi, Louis
Presley, Stephanie E.
Prince, Dennis L.
Pritchard, Joseph D.
Rayfield, Mary Ann
Ream, Tracie A.
Reel, Buck
Reeves, Rene M.
• **Reynolds, Timothy D.**
Rhay, Christal A.
Rhoades, Robin E.
Rhoads, Frederick W.
Rich, Jenalyn
Richards, Cindy L.
Riley, Jeff W.
Riney, Dan C.
Roadman, Tawnya E.
Robinson, Howard D.
Robinson, Robert J. B.
• **Robinson, Trevor D.**
Roeser, Wendy D.
Ronquillo, Manuel P.
Rushing, Ryan
Sabin, Barbara D.
Sande, Scott K.
Saras, Lynna
Sawyer, De Anne S.
Schaaf, Amelia
Schwartz, Carla D.
Scott, Helene G.
Share, Amber R.
Sheppard, Susan
Shively, Jennifer
Shrauger, Barbara D.
• **Simmons, Angela**
Simmons, Jennifer L.
Singer, Betina L.
Singler, Timothy W.
Smith, Bobbie J.

• **Smith, Cynthia R.**
Smith, Donald
Smith, John B.
Smith, John M.
Smith, Mari L.
Smith, Melanie A.
Smith, Ron J.
Soto, Jesse
• **Sperger, Heather C.**
Sperry, Shane E.
• **Stafford, Dan B.**
Starr, Gary D.
Stein, Cindy A.
Sterup, Christopher E.
Stevenson, Rachel
Stevie, Michelle Y.
Stewart, Karen L.
Stiner, Pamela J.
Stockdale, Wayne L.
• **Stone, Christie L.**
Stone, Robert W.
Stone, Sara
Storey, Rhodana R.
Stultz, Jared J.
Sugai, Wakako
• **Surmon, Dawn M.**
Sutjipto, Tjahjono
Tennyson, Denise
Tharp, Kathleen A.
Thompson, Dwight P.
Thompson, Greg
Thompson, Kimberly A.
Thorn, Marsha L.
Tippens, Charles W.
Tolmachoff, Mary L.
Trask, Keri E.
Tristano, Steven
Trulock, Susan H.
Tufa, Julius F.
Turrill, Barbara
Van Loon, James W.
• **Verulashvili, Eteri**
Wagner, Stefan T.
Walker, Ethel Charlotte
Wallace, Ronald
Walsh, Anne E.
Walters, Erin A.
Warden, Nikki L.
• **Ware, David W.**
Waterhouse, Carol L.
Waters, David L.
Waters, Mary J.
Watson, Richard P.
Way, MeShele M.
Webb, John C.
Weir, Michael S.
Weiss, Patti
Wenner, Matthew
Wheeler, Michelle L.
• **Wheeler, Roger A.**
Whelliston, Kyle P.
White, Kelly O.
Whitney, Cory
Wilburn, Susan J.
Williams, Celestine
Williams, Michael A.
Wilson, Darren E.
Wilson, Michael D.
Witt, Shannon D.
Wright, Kimbre L.
Xia, Qiu
Yarbrough, Chris C.
Yeager, Jason M.
Yoshimura, Hideko
Young, Paula J.
Zapata, Jennifer M.
Zerzan, Monika
Zuber, Jennifer R.

Phi Theta Kappa Honorees

The following accepted members of PTK have maintained a 3.5 GPA for 12 credit hours.

Kathy Ancil
Suzette Andreason
Dawn C. Aydelott
Christine Baird
James Barrett
Diana Barrong
Daniel Betty
Marika Bibleishvile
Angelika Boggs
Kathleen Bosteder

Shanna Bourne
Ola Brock
Rosemary Busby
Tina Christin
Cynthia Clark
Andrea Dominquez
Susan Eubank
Sheri Gianuzzi
Jasmina Gradistanac
Toni Greene
Daniel Herzberg
Joy Holland
Jennifer Horton

Darla Hoskins
Berri Hsiao
Debra Humphrey
Debbie Hupcey
Dr. Velma Jesser
Tamara Johnson
Judith Van Der Kaay
Robert Keys
Losein Kirkpatrick
Josh Ladau
Keppa Larson
Carol Lumsden
Joanna Maixner

Karlene Martin
Venice Mason
Jess D. Meyer
Cameron Michaelis
Mary Mitchell
James L. Mooney
Rhonda Morphew
Cheryl Oglesby
Laurel Phibbs
Brandon Prophet
Elisia Quick-Chastain
Richard Sannes
Leigh F. Scheidell

Teri Smart
Cynthia Smith
Melissa Smith
Gayla Snow
Heather Sperger
Michaelle Stellavato
Martine Sulc
Marsha Thorn
Nancy Thornton
Susan D. Turner
Larry Wheller
Kimberly Williams
Lois Zimmerman

Fall term '94 Vice President's List

The following students have maintained a 3.55-3.99 GPA with 12 or more credits for one term. The names in boldface are students who have maintained a 3.55-3.99 GPA with 12 or more credits for three consecutive terms.

• **Addison, Edmond**
 Adkisson, Debra A.
 Aikawa, Misako
 • **Alexander, Lisa**
 Allard, Jody L.
 Allen, Christine L.
 Almasie, Amy
 Ammerman, Kenneth E.
 Amundson, Steve M.
 Anderson, Elizabeth D.
 Anderson, Jeanette F.
 Antone, Brian J.
 Appell, Eric A.
 Aydelott, Dawn C.
 Babin, Julie
 • **Baildon, Titantia**
 Bailor, Tracey
 Bair, Sherri L.
 Baker, Vernon
 Banner, Heide S.
 Barber, Julie R.
 Barker, Larry W.
 Barrote, Nicole
 Barth, Micheal D.
 Bascom, Warren G.
 • **Baxter, Susan M.**
 Beer, Mindy B.
 Beilock, Daniel J.
 Berg, Lanny
 Bergmann, Tim M.
 Bigner, Martha L.
 Bingaman, Amy
 Bivens, Lisa M.
 Blakley, Mark D.
 Bragdon, Gwyneth M.
 Brain, Nathan
 Brainard, Benjamin S.
 Brandsness, Jamie D.
 Brock, Shane C.
 Brown, Christina R.
 Brown, Courtney C.
 Brown, Jennifer R.
 Brown, Vernon L.
 Browning, Erik P.
 Bruno, Donald T.
 Busby, Rosemary
 Butler, Shonna S.
 Caldwell, Stuart D.
 Cameron, Henry W.
 Carlock, Ronald M.
 Caro, Frank X.
 Caro, Richard
 Carssow, Becky A.
 Carter, Natalie E.
 Cessnun, Donna R.
 Chabre, Geoffrey L.
 Champol, Matthew N.
 Chen, Chiao Ju.
 Clark, Lori K.
 Coffin, Kenneth W.
 Cole, Gwen P.
 Comins, Sabra D.
 Cook, Amanda C.
 Cook, Christopher
 Cooper, Dan W.
 Cooper, Emily J.
 Corcoran, Christopher P.
 Corliss, Lisa A.
 Criswell, Michael D.
 Curry, Jennifer
 Curtis, Frank A.
 Cushman, Scott A.
 Dallas, Robert P.
 Daroca, Ben
 Davie, Leah M.
 Davis, Joshua K.
 De Boer, Taunya H.

Deedon, Jennifer L.
 Delocis, Anna E.
 Dennis, Carrie S.
 Dexter, Kerri H.
 Dilger, Karri K.
 Dilley, Rachelle L.
 Dokken, Erik
 • **Dominguez, Andrea**
 Dominick, Timothy R.
 Doolittle, Ericka S.
 Dotson, Kimberly S.
 Douthit, Marc R.
 Dover, Jeffrey
 Du Bray, Jennifer G.
 Durand, Terrie L.
 Eastman, Matthew B.
 Eastman, Wayne E.
 Eaton, Jessie
 Eckardt, Deborah A.
 Eggleston, Ronald
 Ehlers, Karen
 Ellingson, Holly E.
 Ellingson, Peter D.
 Ellis, Brandon L.
 • **Erickson, Seth E.**
 • **Evans, Matthew**
 Fabbri, Aaron
 • **Farley, Steven R.**
 Fegles, Lorin
 Finnerly, Brenda G.
 Foote, Ryan L.
 Foster, Peggy L.
 Freeman, Paula J.
 Freytag, Robin W.
 Gahn, Alicia C.
 Gambrill, Michael D.
 Gardner, Ronda S.
 Garver, Jason H.
 Gates, Donald K.
 Geer, Terry M.
 Gerding, Diana E.
 Gieber, Jennifer
 Gilbertson, Belinda
 Glaze, Eric R.
 Gottlieb, Elizabeth
 Grace, Thomas W.
 Gray, Jillan D.
 • **Gray, Joshua G.**
 Green, Jacob B.
 Green, Martha J.
 Griffin, Lloyd J.
 Grubbs, Dan W.
 Gruenemay, Gayle R.
 Guarena, Bryan S.
 Guthrie, Mary L.
 Gutierrez, Tino R.
 Hackathorn, Jason J.
 Hager, Kim M.
 • **Hallock, Traci L.**
 Handoko, Jimmy
 Hansen, Karen M.
 Hanson, Frances F.
 Hanson, James J.
 Harms, James D.
 Harris, Linda D.
 Harris, Morgan L.
 Harris, Stephen
 Harrison, Julie L.
 Haskell, Carrie L.
 Hass, Meleah E.
 Hatcher, Roger W.
 Hearn, Nathan
 Heiden, Melissa C.
 Henson, Kenneth A.
 Hentges, Douglass M.
 Herrera, Shayne O.

Hess, Matt N.
 Hiatt, Wendi A.
 Hicks, Doris M.
 Hilfiker, Eldon R.
 Hodson, Susanne D.
 Hoggatt, Alisa A.
 Holland, Clifford
 Holland, Walter F.
 Houle, Vicki A.
 Howard, Nicole J.
 • **Hyers, Mike**
 Ilg, Leslie
 Irish, Tobias E.
 • **Ishizuka, Ikuyo**
 Jaquez, Christina L.
 • **Jeffries, Richard B.**
 Jensen, India R.
 Johnson, Brian L.
 Johnson, Wendy G.
 Johnston, Steven W.
 Kampono, Mirza S.
 Kappenman, Tim D.
 Katana, Mark
 Keechler, Marc B.
 Keen, Stacie L.
 Keller, Matt W.
 Kennan, Michael W.
 Keys, Lela T.
 Khilptari, Ekaterina
 King, Rachel M.
 King, Spencer W.
 Kingsley, Heather A.
 Kinoshita, Ayumi
 Kinsman, Natalie
 Klisenbauer, Gabrielle
 Knapp, Jonathan F.
 Knox, Katrinka L.
 Kobayashi, Shinya
 Keohler, Matthew S.
 Lagenor, Heidi
 Lahmann, Joseph A.
 • **Laird, Douglas P.**
 Lambert, David A.
 Land, Jon M.
 Lares, Deborah J.
 Largent, Ivalen L.
 Lasse, Nancy R.
 Lattion, Annette
 Lattion, Ronald T.
 Ledford, Carrie L.
 Lee, Leece
 Lee, Michele L.
 Lee, Yu Chia
 Letson, Patrick A.
 Limantoro Lie, Widyanto
 List, Christian J.
 Litwiller, Randy M.
 Lo, Fabiola
 Lowery, Heather C.
 Lozar, Lonny L.
 Lui, Ying Ying
 Lyda, Heidi L.
 Miller, Leticia D.
 Mac Kenzie, Becky L.
 Maddy, Wayne M.
 Madrid, Shannon M.
 Maeda, Hitomi
 Magan, Alexandra
 Mann, Derrald
 Marcott, Dayton T.
 Marcyan, Gianna G.
 Marple, Nathan C.
 Mason, Juliana
 Mast, Teresa S.
 Matiaco, Lisa M.
 Matthews, Leslie G.
 Mattox, Phillip D.
 Mc Cabe, Heather L.
 • **Mc Carger, Frances E.**
 Mc Cormick, Brad L.
 Mc Farland, Kenneth E.
 Mc Intosh, Colin J. P.
 Meyer, Fredrick J.
 Meyer, Jess D.
 Miano, Antonia

Miller, Linda J.
 Miner, Christin M.
 Miyakawa, Izumi
 Moffett, Ty R.
 Molony, Jason C.
 Monroe, Lenae A.
 Montgomery, Matt C.
 Moore, Bridget L.
 Moran, Kymry H.
 • **Mueller, Justin S.**
 Muma, Lisa, M.
 Murphy, Mary E.
 Murray, Cynthia S.
 Murray, Sarah J.
 Muttterspaugh, Poppie C.
 Myers, Irik R.
 Myers, Stuart G.
 Neitzel, Jennifer A.
 Netherton, Leslie D.
 Nguyen, Veit B.
 Nicholson, Cinimint K.
 Nielsen, Elena B.
 Nygren, Dale M.
 O Dean, Chritina M.
 Oberon, Jodi M.
 • **Ochsner, A. John**
 Odani, Toshikazu
 Ohrmund, Christi L.
 Ohsawa, Kae
 Okamoto, Yumie
 Olsen, Marilyn J.
 Ortiz, Jenifer C.
 Osborn, Judith A.
 Osterman, Paul S.
 Parrish, Julie G.
 Parrott, Glen K.
 Pattie, Leanne R.
 Paul, Wesley J.
 Peerenboom, Rebecca C.
 Perkin, Howard A.
 Perkins, Marie
 Perren, Michael J.
 Peterson, Jonathan K.
 Pierce, Aaron
 Porter, Walter J.
 Powell, Teresa L.
 Poynter, Gretchen L.
 Purkey, Teri L.
 • **Putzier, Victoria**
 Ramsdal, Milissa A.
 Rasmussen, Eric J.
 Ray, Jason
 Reger, Michael A.
 Rehe, Megan A.
 Reid, Ryan
 Renich, Benjamin D.
 • **Reyer, Eric N.**
 Reynolds, Jayme E.
 Riepma, Gregory
 Riley, Richard S.
 Risse, Jane E.
 Rockower, Lori B.
 Rosasco, Raymond J.
 Rose, Cherrilyn
 Rose, Jasmine B.
 • **Rosen, Bradley K.**
 Rossoff, Nick
 Rudder, Heather E.
 Ruig, Paul C.
 Ryan, John V.
 Ryan, Melanie L.
 Sakurai, Ayako
 Santee, Nancy M.
 Schirman, Michael E.
 Schueller, Nicholas G.
 Schussler, Marlene
 Scott, Brad
 Search, Lynette D.
 Segawa, Ryoko
 Shamek, Eugene B.
 Shankle, Frances L.
 Shaw, Colleen M.
 Sheffield, Lisa M.
 Shely, Kristine D.
 Shigeta, Naomi

Shih, Ian
 Singels, Sheila M.
 Skinlo, David
 Skordahl, Jack
 Skramstead, Karen S.
 Sled, Randa L.
 Smith, Amy E.
 Snowden, Tiffany M.
 Sonnemen, Daniel W.
 Sparkman, Steven C.
 Sparks, Karen L.
 Spillane, Shawn
 Spurgin, David R.
 Standley, Larry D.
 Stark, Kerry E.
 Steadman, Gabriel L.
 Steenkolk, Mark C.
 Steffens, Carol A.
 Stimson, Iona J.
 • **Stockdale, Wayne L.**
 Stratis, Timarion
 Summers, Leslie M.
 Svehla, Richard H.
 Swanson, Wendy L.
 Takuma, Satoko
 Tallman, Vicky
 Tashiro, Junji
 Taylor, Cathi R.
 Taylor, Frances B.
 Tedford, Matthew A.
 Teigen, Wendy A.
 Teller, Dianna M.
 Tennant, Lyndia L.
 The, Julies
 Thompson, Kim
 Tiller, Carla D.
 Toppins, Judy
 Torrey Huebner, Linda M.
 Trantham, Robert G.
 Tremblay, Jennifer R.
 Trojanek, Filip J.
 • **Tupper, Steven H.**
 Twisselman, Chris G.
 Ueno, Yoshie
 Ujhelyi, Gabrielle M.
 Underwood, Mindy K.
 Van Esso, Patricia A.
 Vanderlip, Kurt E.
 Varney, Brenda M.
 Veenendaal, Richard D.
 Vestle, Deborah J.
 Victor-Edwards, Michele B.
 Vigil, Lea A.
 Vogel, Vincent M.
 Walter, Theresa M.
 Ward, Joan M.
 Warren, Chris R.
 Watson, Sydney
 Wattier, Nicole C.
 Watts, Lorrien
 Weber, Elise
 Webley, Chris L.
 Weiss, Laura M.
 Wennberg, Mathias C.
 • **West, Douglas**
 Westover, Jeremy D.
 White, Jennifer A.
 Whitney, Derek L.
 Wiard, Danyel L.
 • **Wilkinson, Mary S.**
 Willard, Devin S.
 Willoughby, Brandy R.
 • **Wills, Cindy L.**
 Wilson, Donna G.
 Winkler, Amy L.
 Wishon, Emory
 Woller, Cynthia G.
 Woodring, Audrea G.
 Woodward, kenneth K.
 Worth, Harold E.
 • **Young, Linda J.**
 • **Young, Mary E.**
 • **Yukino, Hiromi**
 Zanetta, Denise L.
 Zuck, Mark T.

'Voyager' series launches United Paramount Network

Michael Cough
Staff Writer

"To boldly go where no one has gone before..." Sound familiar? It's Star Trek's television series "Voyager" which premiered on the United Paramount Network, stardate 1-16-95.

Voyagers first show has already displayed a cast that appears to be more interesting than the crew featured in the "Star Trek: The Next Generation" series which ended last year. It offers more possibilities for discovery, maintains the same dazzling effects of the Star Trek series, and is commanded by a captain who isn't afraid to break the rules that had limited previous Star Trek shows. After two episodes the show has yet to be a let-down.

The fourth of the Star Trek series premieres with the USS Voyager going after a craft piloted by a renegade group of people, known as the Maquis, which becomes trapped on the other side of an unknown space disturbance. Encountering the

disturbance, the Voyager finds itself taking 75 years of travel, at top warp speed, away from the nearest Federation starbase.

Here the crew members discover the Caretaker, a powerful alien searching out a mate so its offspring can care for a race of people nearly extinct and threatened by others on the planet below the Caretaker's space station.

Near the end of the episode the crew of the renegade Maquis ship team up with Voyager to keep the Caretaker's knowledge from falling into the wrong hands. The crew is forced to destroy the station at the cost of the Maquis ship and everyone's on their way back home.

The show features nine crew members, starting with the first female starfleet captain Kathryn Janeway (Kate Mulgrew). Other crew members are Chakotay (Robert Beltran), a first officer; Lt. Tom Paris (Robert Duncan McNeill), pilot; Tuvok (Tim Russ), a Vulcan security officer; Ensign Harry Kim (Garrett Wang), ship's communication

officer; B'Elanna Torres (Roxann Biggs-Dawson), a half-Klingon/half-human chief engineer; Doc Zimmerman (Robert Picardo), a holographic doctor; and Neelix and Kes (Ethan Phillips and Jennifer Lien), two young lovers familiar with the section of space the Voyager now finds itself exploring.

Voyager's second episode showed the crew struggling with a time distortion bearing a similarity to a "Star Trek: The Next Generation" episode. Here, the crew of the Voyager handled the distortion and both groups, Maquis and Federation personnel, discovered what one another can do when they have to work together.

Overall, the newest Star Trek offering appears to be better than what most people expected.



PHOTO COURTESY OF UNITED PARAMOUNT NETWORK

Front center: Kate Mulgrew. Back (l to r): Ethan Phillips, Robert Beltran, Garrett Wang, Jennifer Lien, Robert Duncan McNeill, Tim Russ, Robert Picardo and Roxann Biggs-Dawson.

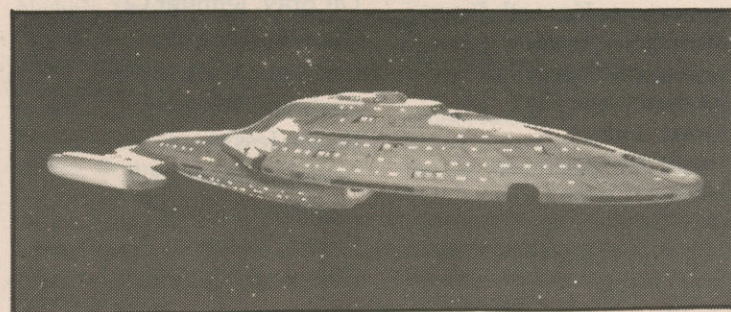


PHOTO COURTESY OF GARY HUTZEL

The U.S.S. Voyager ventures through the cosmos.

BOND continued from page 1

ready here," said Peterson, who maintained that student services and activities are vital in assisting students, helping them succeed, and enjoying their time here.

He also said a new student center location should be in a "high-traffic" location so all

clubs and organizations can be visible to students.

Native American Program Coordinator Frank Merrill said in the future students from many cultures will come to LCC and will seek out a centralized location of student organizations for assistance. Further, he

said LCC needs to be regarded at the "top of the list" of colleges which students are willing and able to attend.

Athletic Director Harland Yriarte asked Colvin why was the student union building taken off the original list of proposed improvements, and what convinced the college to believe that a student union building would jeopardize voter approval?

Colvin said a community committee deleted the student center idea after reviewing the \$64 million proposal.

He also said his proposal to move some student activities to the lower level of the Apprenticeship Building is only a concept at this point. He reiterated that the current proposal only prioritizes the college's needs and costs, and is not a final design.

But those present pressed for a commitment to place student needs higher on the priority list.

Waddell told the group there will be sufficient funds in the bond levy to address student needs.

The group is planning a second meeting on Tuesday, Jan. 31, from 8:30 to 9:30 a.m. in the Boardroom on the second floor of the Administration Building. All students are welcome to attend.

The LCC Board of Education will reopen the discussion of a possible student center at its Feb. 8 meeting.

Make someone's day -
sign up for:

TORCH Valentines

At the table in the cafeteria
Feb. 3-8, 10 a.m.-2 p.m.

or anytime, in CEN 205

Creative consultants available.
Student-friendly ad rates (\$1-\$8)

GEN ADMISSION TH-SA \$5 • SU-WE \$4 • SU MAT \$3 • SRS \$3.50 • KIDS \$2.50 • GIFT CERTIFICATES AVAILABLE!
BARGAIN PASSES ON SALE NOW - 5 MOVIES FOR \$17.50, 10 FOR \$30, GOOD SU - TH

5:00, 7:20, 9:45 Nightly Sun Mat 2:40 (\$3)

"A REMARKABLE MOVIE!"
-Roger Ebert, THE CHICAGO SUN-TIMES

JENNIFER JASON LEIGH Campbell SCOTT BRODERICK
MRS. PARKER AND THE VICIOUS CIRCLE

COMING TO LIVE

BIJOU LATE NITE • Late Nite Adm Th-Sa \$3 / Su-We \$2.50 • BIJOU LATE NITE • BIJOU LATE NITE

11:45 NIGHTLY SAT MAT 3:00 (\$3)

HEAVENLY CREATURES

COMING: PULP FICTION

SPECIAL ENGAGEMENT!
(Sorry, no Bargain Shows for HOOP DREAMS except for 1st show on Sun.)
5:15, 8:30 Nightly Sun Mat 2:00 (\$3)

"UNFORGETTABLE!"
TWO VERY ENTHUSIASTIC THUMBS UP!
-SISKEL & EBERT

HOOP DREAMS

492 E. 13th 686-2458

LOOK FOR THE NEW BIJOU FILM FEST CALENDAR AROUND TOWN AND IN THE BIJOU LOBBY!

12:05 NIGHTLY SAT MAT 2:30 (\$3)

Ed Wood

COMING: HONG KONG LATE NIGHT FILM FEST!

Now Serving in

THE CAFETERIA

Monday — Wednesday — Friday
11:00 - 1:30

Homemade Enchiladas

3 kinds:
Vegetarian
Chicken
Beef

AIM HIGH



The Air Force Has Jobs

We're hiring. And we'll train you in one of more than 250 high-tech skills. Then when your enlistment is up, your skills will be in demand in a civilian job. Plus, we'll help you pay for college while you're in the Air Force. We also have a plan for you to have money for school when your Air Force tour is over.

For more information call
1-800-423-USAF or contact your
local Air Force recruiter.



1ST WAY

Free Pregnancy Testing

"We Care"

Eugene Professional Building

132 E. Broadway, Rm. 720

Eugene, OR 97401

687-8651

Greek myth and drama inspires local artist

Mary Klacsan
A&E Editor

Allen Cox was an archaeologist for 10 years. At digs around the state of Oregon, he worked as a photographer, illustrator and excavator.

Now, he incorporates his archaeological experience and mythical references in his paintings.

He records his images with oil paint and wax. On canvas, Cox creates dense surfaces of paint and wax built up layer upon layer. The effect is "beat up, weathered and worn," he says, like something that would be dug up in an archaeological excavation.

Some of his work will go on display in the LCC Art Gallery Jan. 30 through Feb. 17.

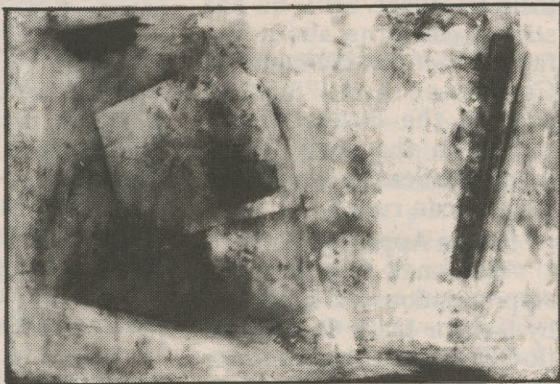
He says as a child he read mythology and drama.

"I liked the fantasy element of it," Cox says.

"My paintings are abstract allegories regarding certain aspects of the human condition poised against the harsh realities of survival and change," he explains.

Cox says he knows how to draw and paint in a realistic manner, but "I'm far more drawn and interested in abstraction."

He exhibits his work on the West Coast and the Midwest, and he's excited to show his work at Lane because "I haven't had a solo exhibition



COURTESY PHOTO

"Pompei," 1994, oil, marble dust on paper, by Allen Cox.

in Eugene since 1988."

Cox will lecture Tuesday, Feb. 7 at 10 a.m. in the LCC Art Gallery. A reception for him will take place Friday, Feb. 10, at 7 p.m., also in the gallery.

The LCC Gallery is located in the Math and Arts Building on the main campus. Hours are 8 a.m. to 10 p.m., Monday through Thursday; and 8 a.m. to 5 p.m. Friday. Admission is free. Cox's lecture is sponsored by the ASLCC.

For more information, call the Art Department at 747-4501, ext. 2409.

Around Town

A weekly guide to musical happenings in the Eugene/Springfield metropolitan area.

FRIDAY, JAN. 27

West African Drum Class
436 Charnelton St.
Dance Center
5:00 - 7:00 p.m. — \$10
Info: 686-5980

Ladysmith Black Mambazo
(South African A Cappella)
Hult Center
7th & Willamette
8:00 p.m.
687-5000

Art Grooveaux
(Funk/Soul)
Rainy Day Cafe
50 E. 11th
9:30 p.m.
343-8108

The Daddies
(Rock /Funk /Jazz)
WOW Hall
291 W. 8th
9:00 p.m.
687-2746

Love, Death & Agriculture
(Rock /Funk)
Vet's Club
1626 Willamette St.
9:30 p.m.
(Fri. & Sat.)
345-3261

Paul Paydos Trio
(Jazz)
Jo Federigo's
259 E. 5th
9:30 p.m. (Fri. & Sat.)
343-8488

SATURDAY, JAN. 28

West African Dance Class
436 Charnelton St.
Dance Center
2:00 - 3:30 p.m.
Info: 686-5980

The Nephews
Cafe Paradiso
West Braodway & Olive St.
8:30 p.m.

Surfonics & Secret Surfers
(Rock)
Rainy Day Cafe
50 E. 11th
9:30 p.m.
343-8108

compiled by Angela K. Kellner

Annette's Recipe Corner

CHEF'S SALAD:

- 1 head of lettuce - torn into bite size pieces (3 cups approx.)
- 1/2 cup sliced cucumbers
- 1/2 cup chopped celery
- 1 shredded carrot
- 3 or 4 sliced radishes
- 1/4 cup sliced green onions
- 1 cup thinly sliced cooked chicken and/or turkey
- 1 cup thinly sliced cooked ham
- 1 cup thinly sliced Swiss or Cheddar cheese
- 3 hard-cooked and sliced eggs
- 2 tomatoes, sliced into wedges
- 1/2 cup croutons
- 1 avocado peeled and diced

In a large bowl combine first six items and toss lightly. Arrange meats and cheese over lettuce. Top with eggs, tomatoes, avocados and croutons. Chill and serve with one or more dressings.

VINAIGRETTE:

- 1/2 tsp. parsley
- 1 tsp. italian seasoning (any brand)
- 1/2 tsp. garlic salt
- 4 tbs. white vinegar (or red wine vinegar, if available)
- 1/2 cup virgin olive oil
- 1/2 tsp. Worcestershire sauce

In a jar with a tight-fitting lid, combine all ingredients and shake well. Cover and refrigerate until chilled. Mix well before serving.

HOMEMADE ICE CREAM:

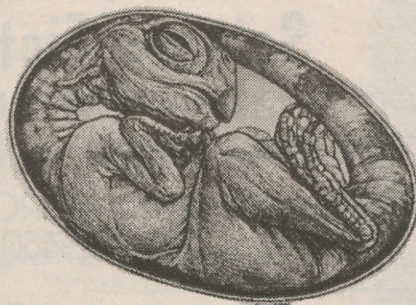
One last quick recipe to share was given to me by my Aunt Barb (who is my favorite aunt). It is quick, no-hassle recipe for her homemade ice-cream.

- 1 tub Cool Whip™
- 1 can sweetened condensed milk
- 1 pkg. frozen berries (your choice)

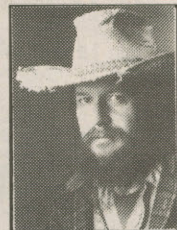
Defrost and drain berries well. Bring all ingredients to room temperature. Fold evaporated milk into whipped cream and mix in berries. Freeze mixture half-way and mix again. Finish freezing and chow down.

The Science, Technology and Society Lectures

Let there be DINOSAURS!



Drawing of carnivorous dinosaur embryo by Mick Ellison, staff artist at the American Museum of Natural History.



Dr. Robert Bakker

7:30 p.m., Jan. 27, Arlene Schnitzer Concert Hall
8:00 p.m., Jan. 29, Hult Center

Portland tickets: Fred Meyer FASTIXX outlets, 224-8499 (from outside Portland, call 800-992-8499). Eugene tickets: Hult Center Box Office, 687-5000.

Presented by the Institute for Science, Engineering and Public Policy and co-sponsored by: Oregon Public Broadcasting, the high-tech PR firm Waggener Edstrom, University of Portland, Oregon Episcopal School, University of Oregon/UO Alumni Association, In-Focus Systems, Community College Consortium and The Business Journal. Special evening co-sponsor CTR Business Systems. Additional support provided by Willamette Week, the Heathman Hotel and the Eugene Hilton.

STOP

on your way to or from school for Eugene's best Espresso drinks



30th & Hilyard by Albertsons
25¢ off for LCC students

Campus Ministry

Needs your

HELP NOW



Unless we receive Financial Help immediately we will no longer be on Campus to provide:

- Counseling
- Food
- Emergency Financial Assistance
- Clothing
- Shelter From Emotional Storms

All contributions to Campus Ministry work here on campus.

Center Bldg. 242, 747-4501, Ext. 2814

Buy a Valentine's Day ad for your sweetheart. Drop by the Torch office, 205 Center Bldg.

CONGRESS continued from page 1

called for across-the-board cuts and the elimination of the in-school interest subsidy in the student loan program. We expect him to hold hearings across the country on the budget in January."

House Appropriations

"The House Committee on Appropriations will be chaired by Congressman Bob Livingston, Republican from the First District of Louisiana. He is an attorney who came to Washington in 1977...."

"Livingston is a strong supporter of a balanced budget. Funding levels for the Federal Pell Grant and campus based programs will fall under his jurisdiction as will all other student assistance programs."

"The appropriations subcommittee with responsibility for federal student aid funding will be chaired by Congressman John Edward Porter, a Republican from the 10th Congressional District of Illinois. Porter was first elected to Congress in 1980 and has a reputation of sensitivity to college financing problems of students and parents...."

Senate Committee Leaders

"Authorizing Committees: In the U.S. Senate, Senator Nancy L. Kassebaum, Republican from Kansas, will assume the Chair of the Committee on Labor and Human Resources, formerly chaired by Senator Edward M. Kennedy (D-MA). Senator Kassebaum has been in the Senate for 16 years and has been a strong supporter of education programs. Like her House counterpart, she has a thorough knowledge of the programs and has been a supporter of student aid."

"The Senate Subcommittee on Education, Arts and the Humanities will likely be chaired by Senator James M. Jeffords (R-VT). Jeffords also has been a good friend of education, and previously called for a certainty of funding levels for needy students and increased expenditures for education."

Senate Budget Committee

"The Senate Committee on the Budget will be chaired by Senator Pete V. Domenici (R-NM). He is very knowledgeable about federal issues and is

also very fair. He has eight children and clearly understands what it is like to send them to college. Still, he has strong concerns about the federal deficit. He came to Congress in 1973, and chaired the Budget Committee in the early 1980s when the Senate was under Republican rule."

Senate Appropriations

"The Senate Committee on Appropriations will be chaired by Senator Mark O. Hatfield (R-OR). As a former educator and state official, Senator Hatfield has been a strong supporter of education. He came to the Senate in 1967, and is considered a moderate by his peers. Senator Arlen Specter of Pennsylvania apparently will chair the appropriations subcommittee with responsibility for student aid funding. Specter, also is considered supportive of federal programs to aid students."

"Senator Robert Dole (R-KS) will be the new Majority Leader, and Senator Trent Lott (R-MS) the Majority Whip."

WORKERS continued from page 3

in the long run," says Venturi. "There's now a lot of new legislators in the state so we have to educate them also, although, Governor Kitzhaber's budget has our programs maintained so we're starting from a lot better perspective this time."

One of the first things he did as director of Specialized Employment Services was to join forces with Sandra Jones, director of Senior Companion Program, also supported by LCC. Seniors volunteer 20 hours a week of their time and help other seniors or developmentally disabled adults shop, pay bills, take the bus and do other daily activities. They re-

ceive \$2.50 per hour stipends, mileage reimbursement, and one meal per day.

"By keeping these people active, they're helping themselves. They're going to stay healthier longer and do better for themselves longer. When working with the Specialized Employment Services they become a trainer. They assist the (developmentally disabled) person in learning skills so they can become independent. The whole goal of the program is to maintain independence as long as possible," says Jones.

Venturi loves working with LCC clients.

"I immediately took to working with this population because they're so endearing. They're honest, open and grateful people. That tends to be their personality. Of course, just because a person's disabled developmentally doesn't mean they are all alike. Everybody's different. There are people that can be hard to get along with just like other kinds of individuals. But as a rule, they're really nice to work with," he says.

He sits back in his chair and smiles.

"I enjoy my job. I sort of came back to my roots when I started working here (S.E.S.) four and a half years ago."

ASLCC okays funds for Ski Ball transportation

Christian Hill
Editor

The Associated Students of LCC will pay \$1,172 for bus transportation to the Feb. 3 Ski Ball.

At its Jan. 23 meeting, ASLCC also reviewed its overall plans for the Mount Hood event.

The cost for tickets is \$9, which includes transportation to Mount Hood and a lift ticket. Currently, there are over 40 tickets remaining out of the 100 allocated. Tickets will be sold at the Student Resource Center on the second floor of the Center Building.

Student government will make a \$2 profit for each ticket sold and funnel the money directly back to subsidize the cost for transportation.

"From the amount of people it's going to benefit, it's a steal for us," said senator Sheri Gianuzzi.

The buses will depart from the main campus at noon on Friday, Feb. 3, and return at 4 or 5 a.m. Saturday morning, said SRC Director Tom Lee. Lee advised students who are travelling by private vehicles not to arrive before 4:30 p.m. since they wouldn't be admitted until that time.

In other business:

• Student government also funded the Multi-Cultural Center \$187 for food and beverages for the center's spring term Open House.

The MCC usually holds the event during fall term. But because of the MCC's remodeling fall term, the event will take place Feb. 1 from 10 a.m. to 4 p.m. in CEN 409, said MCC Coordinator Connie Mesquita. The

purpose of the open house is to make students aware of the center which has been on campus for 22 years, she said.

• ASLCC tabled a request from the English as a Second Language Family Literacy Project for \$800. Last year, ASLCC funded the program \$200, helping the department and Whittaker Elementary School collaborate so ESL students could use Whittaker's classroom space and childcare facilities.

The ESL program is in the process of raising \$3,200 for project staff and supplies during spring and summer term. Program representative Bryan Moore said none of this money went toward administrative fees.

"Every penny we fund-raise went to services for family members with children," he said.

But before voting to table the motion, student senator Tracey Dorris pointed out that ESL students don't pay the \$23 student activities fee each term, as do registered credit students.

• Student government also tabled a request from ASLCC Vice President Sarah Holmberg for \$700 to help fund travel and lodging expenses for the Emergency Campus Environmental Conference on the University of Pennsylvania campus in Philadelphia, Feb. 24-26.

Holmberg said over 1,000 student leaders will be at the conference to explore environmental problems and leadership skills.

Lee asked Holmberg to look into lower cost lodging, including the conference's free housing option.

OSPIRG from page 3

• "Recycling," a plan to improve recycling on campus and elsewhere, coordinated by Danielle Jolly.


• "Endangered Species," an effort to preserve animals facing extinction, coordinated by Kim Marks

• "Hunger and Homelessness," a plan for scheduled food drives and a soup kitchen, as well as a national "Hunger Clean-up" day, coordinated by Patricia Sjahli and Susan Gallagher-Smith.

OSPIRG's Campus Coordinator Ellen Huffaker addressed the group about the Republican Congress' "Contract with America" and budget plans calling for the elimination of most financial aid programs for college students.

Huffaker urged those in attendance to write their representatives and advise them to look at current suggestions for budget cuts.

Students interested in helping with the five campaigns or learning more about the proposed budget cuts are encouraged to contact the OSPIRG office located in the basement of the Center Building.



Denali

needs submissions!

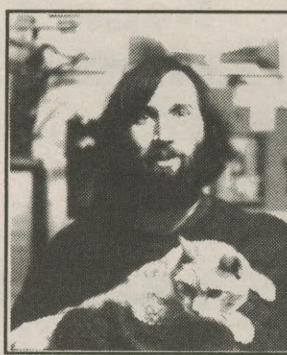
The theme for winter term is

Science Fiction

Submit fiction, poetry, art, or photography!

Deadline is Feb. 8, 5:00 p.m.

Pick up a submission form at the SRC or in the Denali office (479F CEN) or call 747-4501 ext. 2830



Jerry Oltion

is the author of Frame of Reference, two books in Asimov's Robots and Aliens series, and a collection of short fiction, Love Songs of a Mad Scientist. His short fiction appears regularly in Analog and the Magazine of Fantasy and Science Fiction. Jerry will read, followed by a question and answer session.

Wednesday at 4:00 p.m., Feb. 1, in the Blue Door Theatre (PA103)

first Impressions

are everything



Make a lasting impression with a variety of presentation materials

Open
24
Hours

kinko's
your branch office

1265 Willamette / 344-3555 / Fax 344-0870

February 2
is Groundhog Day

CLASSIFIED ADS are free to LCC students and staff, 15 words maximum, printed on a space available basis. All other ads are 20 cents per word per issue, paid in advance. *The Torch* reserves the right to refuse ads. You must include your name and phone number. Ads will only be run for two weeks unless re-submitted. CLASSIFIED AD forms are available outside the main entrance of THE TORCH Office. Deadline is Friday, 5:00 p.m., for next Friday's issue. Calendar forms are also available at THE TORCH Office. Deadline is Tuesday noon for the following Friday's issue. For info call 747-4501, ext. 2014.

services

FLYING FINGERS TYPING SERVICE. Fast, accurate, professional. \$1.50 page and up. Phone 484-9038.

ENGLISH as a second language

by a credentialed, experienced tutor. 342-7033.

wanted

TO BUY USED OVERHEAD PROJECTOR, leave message at 683-4090.

free

8 MO. MALE AKITA, to good home. Wonderful loving dog needs a stable family and/or lots of space. 744-2894

psa

PARENT'S CLUB. For information call Paula Liddle 744-2531.

CONDOMS, six for \$1. CEN 126.

STUDENT HEALTH. Women's Clinic. Pap smears, breast exams, STD screening \$30. Pregnancy test \$6. Birth control pills \$5 per cycle.

FREE DROP-IN TUTORING for all LCC students is in the Writing Center, CEN 450 M-F, new hours: 8-4.

BIBLE STUDY—Thursdays, noon-1:00 pm in PE 214. Sponsored by Baptist Student Union.

for rent

ROOMATE WANTED (female), share apartment near 30th and Hilyard, semi furnished, rent \$200. Also share low cost utilities. Call 683-3031.

for sale

BECKMAN Industries digital Multimeter, used one term, plus case, \$70. Call Thomas 726-2809.

CANON CAMCORDER L-1 HI8, w/accessories \$1500. Bogen tripod 3061 w/mini fluid head \$20. Sekai mountain bike \$100 obo. Call Lisa at 683-4821.

'70 DATSUN P/U great running condition. Excellent work/school truck \$500 obo. Call Joe 942-4981.

BOY'S 20" HUFFY Mud Slinger bicycle. Air foils, water bottle,

Awesome. Unused \$70.683-2813.

'84 WESTFALIA CAMPER van. Rebuilt engine w/30,000mi. New clutch, breaks, exhaust. Motivated seller. \$5900 obo, 678-9439.

IBM-XT COMPUTER with WP 5.1, Lotus 1.2.3, more. Printer included. \$250. Ben 741-2492.

'76 MERCURY CAPRI excellent running condition-\$850, evenings after 7:30, 342-1090.

'86 RED HONDA SPREE SCOOTER, low miles, excellent condition, \$400, 6-10 pm, call 744-8132.

HONDA CM250C needs some work. \$100 obo. Cosmo 345-7836.

messages

HAPPY 22nd Anniversary Mom & Dad. We're glad you made it. Mike & Kristy.

NEED A VALENTINE? Place a message in the Classifieds to

someone you love or have special feelings for. Space available January 27 to February 10. Applications outside the *Torch* office CEN 205.

opportunities

LOGO CONTEST \$50 prize money. Native American Student Council accepting new design for their new logo. Logo must illustrate the ties between Native Americans and higher education. Deadline for all designs is Jan 30th, 1995.

HOW TO MAKE BIG MONEY FISHING in Alaska!!! For your informative guide and current company listing: send \$14.95 to: Alaskan Opportunities, P.O. Box 22541, Eugene, OR 97402.

travel

GREAT BRITAIN 16-day EF educational tour departing 6/20/95. Student fee \$2169; adult \$2411. Sharon Thomas ext. 2145.

LETTERS continued from page 1

these numbers just like before and we will be right back where we started. Instead of trying to create a new problem by making up a new numbering system, how about fixing the old one? What if your SSN was not printed on your transcript sheet for everybody to see? What if LCC's new kiosks just gave out your necessary information without your SNN printed on it? What if the student information line required a special password to get into it? These types of steps could definitely start to restore your privacy and mine.

Roger Hatcher
Broadcast/Visual
Design and Production
Student

Griffin not a bigot

Reading Alan Curtis' response (*Torch* Vol. 30 #13) to the "Autonomous Zone" article (Vol. 30 #12) makes me wonder if we all speak the same language.

Curtis states "Understanding and comprehension, these are the keys in combating ignorance." yet Curtis' lack of comprehensive ability seems to limit his understanding.

I have read and re-read the "Autonomous Zone" and I fail to see where the words of a bigot are expressed, I fail to see the hypocrisy Curtis alleges. I do not see where Griffin's main argument is that LCC should not celebrate Martin Luther King Day. It seemed to me Griffin was advocating a more proper celebration of Martin Luther King Day instead of the second class recognition LCC gives the "holiday" at present.

I fail to understand the logic behind Curtis' argument that an opinion column should make a connection to a news article. Curtis says Griffin needs to realize the courage it took and takes to stand up and fight racial oppression. It seems Griffin understands what it takes to stand up and fight oppression. He is the only *Torch* writer I see take on racial issues consistently.

If Mr. Curtis is under the impression that LCC observed Martin Luther King Jr.'s birthday to the same extent as the other entities he cited, he is sorely misinformed. LCC faculty and staff were required to report to work on Martin Luther King Day although LCC calls it a holiday. Curtis compares Martin Luther King Day to Memorial Day, yet staff

members have Memorial Day off just like students.

Curtis says that Griffin should offer specific logical solutions to the problem of racism as if it were an equation with a right answer. The few suggestions I saw in the "Autonomous Zone" were: Why not schedule a speaker in the evening or when students will be on campus? We could try to embody what Dr. King stood for. Try to live together instead of perishing together as Rev. King prophesied. Finally, we could ask ourselves, "What did Martin Luther King Jr. really stand for?"

I was not confused or offended by the "Autonomous Zone" but I certainly question the motivation for the use of such a large picture.

Justin Herrling
Computer Science Major

Letters to the Editor should be under 250 words and must include the author's phone number and address. Please send them to:

The Torch
Room 205, Center Building
4000 E. 30th Ave.
Eugene, OR 97405

Only 50 more days until Spring Break!



FRESH • FIT • N' FAMOUS™

MEXICAN FAST FOOD

"Heavy Burrito's"™

Healthy & Inexpensive

• Low Sodium • Low Cholesterol

• High Carbohydrate • High Fiber

• All Natural

26th & Willamette • 465-1113



633 E 11th Ave.

- Free Pregnancy Tests
- Birth Control & Cervical Caps
- Gynecological Care
- Abortion Services
- Medicaid/Insurance

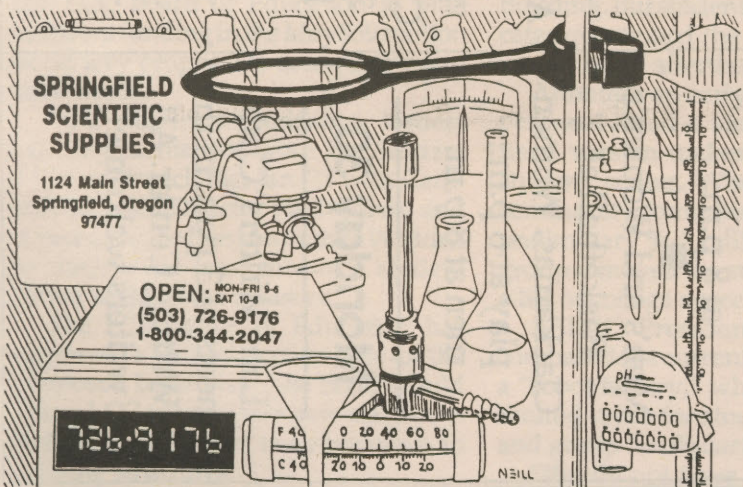
342-5940

Women meeting the unique health care needs of women

The Department of Forestry,

Forest Grove District is recruiting for seasonal firefighters. Employment for these positions will begin approximately June 19, 1995 and will end September/October 1995. Application deadline is March 3, 1995. Applications and additional information available in the Lane Job Placement Office, Room 302, Forum Bldg.

Denali submission deadline:
Wed. Feb. 8



URGENTLY NEEDED

PLASMA VOLUMES ARE CRITICALLY LOW

PLASMA DONORS

PAYMENTS OF \$100-\$1,000 A MONTH

For more information, please contact

Eugene Plasma, Inc.

484-2241

1071 Olive St.

747-5227

Friday to Friday

JANUARY 27 - FEBRUARY 3

Friday 27

"An Evening of Short Plays," produced, designed, acted and directed by students. In the Blue Door Theater at 8 p.m.

Saturday 28

"An Evening of Short Plays," produced, designed, acted and directed by students. In the Blue Door Theater at 8 p.m.

Men's and Women's Basketball at Clackamas. Women play at 6 p.m.; men at 8 p.m.

Monday 30

Lane Writers' Club meets at 3 p.m. in the Writing Center. All writers welcome!

Paintings by Allen Cox will be displayed in the LCC Art Gallery through Feb. 17. A reception will be held Feb. 3 from 7 p.m. to 9 p.m.

Tuesday 31

Deadline is today for contest sponsored by Sigma Zeta, offering \$100 scholarships for the best poem, short story, drama or essay. Call Velma Jesser at ext. 2157 for details.

Wednesday 1

ASLCC Cultural Committee is showing, "Kiss: Phantom of the Carnival," on Feb. 1, at 2 p.m. in Forum 310. It's free and will run two hours.

Thursday 2

Groundhogs' Day!

Look for your shadow!

Friday 3

"An Evening of Short Plays," produced, designed, acted and directed by students. In the Blue Door Theater at 8 p.m.

Mount Hood Ski Ball buses depart from LCC at noon and return at 4 or 5 a.m. Sat. morning. Tickets include transportation and a lift ticket. They can be bought at the Student Resource Center for \$9.

Beyond Friday

Downhill ski class at Hoodoo Ski Bowl on Thursdays from Feb. 9 to March 9. 7:30 a.m. to 6:15 p.m. It costs \$140 plus \$30 credit tuition. Meeting on Tues, Feb 7, at 12, PE 205. For more information, call PE, or Lyndell Wilken ext. 2537.

THE TORCH

LANE COMMUNITY COLLEGE

January 27, 1995

4000 E. 30th Ave., Eugene, Oregon 97405



ROBIN KOSTER/THE TORCH

PAGE 1: FINANCIAL AID

Congress may cut vital funding for college financial aid programs as part of the "Fiscal Responsibility Act."

PAGE 1: BOND

On Feb. 8 the LCC administration will recommend to the Board of Education to address student needs in the bond levy proposal.

PAGE 3: PROGRAM

SES allows developmentally disabled students to provide the college vital services.

COVER —

Media Arts and Technology student Will Boise received a grant to create an educational brochure on an Oregon Trail mural on the Gerlach Building.