

# The Torch



VOLUME XXXII, NUMBER 1

LANE COMMUNITY COLLEGE

SEPTEMBER 20, 1996

## Hillary Clinton visits Eugene

**Ryan Bate**

*Editor-In-Chief*

Amid deafening cheers, hand-waving, and sign-holding Hillary Rodham Clinton made a vow to the students of South Eugene High School on Tuesday, Sept. 10.

Addressing a full crowd of almost 4,000 people enduring sweltering heat in the SEHS gymnasium Clinton promised her support of a law her husband Bill Clinton is proposing to make two years of community college free to anyone.

"What good does it do if we have a fine system of community colleges . . . if there are good, hard-working young men and women who cannot afford to go? They've done what they thought they were supposed to do, they've studied hard, they've worked hard, they've tried hard — and all of a sudden the door is slammed shut. "There should not be any financial obstacle for any young person going on to college," declared Clinton.

The initiative would give every American citizen a \$1,500 per year tuition tax credit (also called the "Hope Scholarship") for the first two years of college attended,

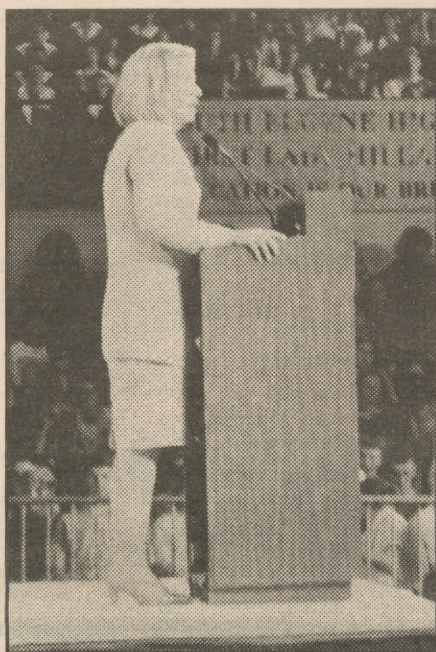


Photo by Lisa Stephenson

**Hillary Clinton speaks to students and community members in the SEHS gym on Sept. 10**

See **Hillary**, page 10

## Working on movie set can be "educational" experience

**Deb McManman**

*Production Manager*

*The place:* Hayward Field.

*The time:* 5:30 a.m.

*The date:* Saturday, Aug. 10, 1996.

*The scene:* Over 1,500 "extras" line up at Gate 14, waiting for their chances at stardom, peek at the behind-the-scenes action on a movie set, or maybe a glimpse at world-famous actor Tom Cruise in the flesh.

There was a mix of people: middle-of-the-road parents with children in tow; athletic-looking collegiate types; young girls with tight sweaters and loads of face paint.

They all had one thing in common: On that day, they all had that definite 70s "look."

Warner Bros. and C/W Productions (Cruise's production company) had been filming "PRE," about UO track star and local legend Steve Prefontaine, in various Oregon locales since June. The crew had shot scenes in Cottage Grove; at Devil's Elbow, near Heceta Head Lighthouse north of Florence; and in many locations in the Eugene/Springfield area. And in the process it hired many extras and production people, both as volunteers and as paid employees.

The process of getting work on a movie set is a difficult one for both paid and unpaid jobs. For this particular day of filming, people had to get special tickets by going to Gate 14 at Hayward Field and signing a list, calling a phone number for confirmation, then showing up on the appointed day of filming at 7 a.m.—and this was just for the privilege of working on the movie without pay.

The following weekend, even paid extras jumped through hoops to get hired. The ones who did not receive call-backs (telephone requests from the personnel department) had to talk to as many as half a dozen people before their names were put on a special "list" to gain admittance to the next



Photo by Marty Schwarzbauer

**Billy Crudup (left), star of Warner Bros. movie "PRE," and Pedro Shanahan, take a break from a rigorous day of filming at Eugene's Hayward Field. Shanahan, a former LCC student, was Crudup's "running double" in the film.**

closed set at Silke Field in Springfield. Persistence definitely paid off for these people.

At UO's Hayward Field, all extras could turn in their ticket stubs for chances to win a free car, a mountain bike or other prizes. During slow times, in between shots, they would be entertained by jugglers, cheerleaders, and the movie crew itself. And, at the end of the 12-hour day's filming, Warner Bros. served the people who survived the 102-degree heat a barbecue of hot dogs, potato salad, and soft drinks.

One paid extra working on the set that day, a well-worn "relic" from the 70's who would fit in quite nicely at a Grateful Dead concert, said he was walking on the campus when one of the movie people approached him and said, "We need you for some of our scenes

See **Pre**, page 9

## Committee decides that volunteers lose 'free LCC class' benefits

**By Katie McCarron**  
*Staff Writer*

When the college's attorneys ruled illegal the popular Courtesy Appointment program last spring, LCC officials decided to kill the program.

A committee working on a tight deadline last spring and summer has developed a plan which partially replaces the 20-year-old Courtesy Appointment which cost the college \$120,000 last year.

Committee member Katie Lytle, operations bookkeeper in the Finance Department, says that under the old Courtesy Appointment system, a student could work 30 hours

a term in an LCC department, and the school, in appreciation for the contribution, would offer a free class, a \$96 value (for a three-credit class). But when divided by 30 hours of work, it equals roughly \$3 an hour, and that's below minimum wage.

Other inequities compounded the problem: the value of a class differed for Oregon, out-of-state, foreign and senior students. Furthermore, some students would pay for a four-credit class with 30 hours work, others could work more than 30 hours for a three-credit class.

According to Jack Powell, chair of the English, Foreign

Language and Speech Department who also heads the Courtesy Appointment Committee, "Three new programs will partially replace the Courtesy Appointment: the Student Work Program, Proficiency Grants, and volunteer positions. The college will fund the grant with \$25,000 and the employment programs with \$95,000.

According to Joan Adams, Job Placement office, "The Student Work Program is for students who are enrolled in at least one three-credit class or 30 hours of a non-credit Adult Education class and who are not eligible for the Federal Work Study Program and are not receiving a

Talent or Proficiency Grant." Students will be paid \$4.75 per hour, and are allowed one free class.

Students wishing to apply for an SWP position must complete an application available in the Job Placement office (302 Forum Building). Return the application to Adams in Room 303. Adams will conduct a brief interview explaining the various positions and expectations. The student will also interview with the supervisor of the department. Not all students who apply will be able to be placed in jobs. Some will find themselves on a waiting list, says Adams.

Departments have requested specific numbers of 30, 60, or 90-hour blocks of time per term, and the positions are not renewable. Students who find SWP positions must return to Job Placement to reapply for the next term.

Powell says, "Throughout the development process the committee has worked with departments in an effort to determine what each requires to maintain services, while recognizing that the funds available may not meet those needs."

Adams already expresses some concern: at \$4.75 an

See **Courtesy**, page 4



# OPINION & EDITORIAL

RYAN BATE, EDITOR-IN-CHIEF

THE TORCH

747-4501 EXT. 2014

FALL TERM

WILCOMMEN!

BONJOUR!

Hola! Que Pasa?

WEEK 1



Editor-in-Chief  
**Ryan Bate**

Managing Editor  
**Kelly Schulze**

Production Manager  
**Deb McManman**

Assistant Production Manager  
**Jack Clifford**

Photography Editor  
**Lisa Stephenson**

Assistant Photography Editor  
**Daniel Armanino**

Online Editor  
**Dean Grabski**

Sports Editor  
**Letha Rynazewski**

Arts & Entertainment Editor  
**Bryan Peterson**

Assistant to the Editor  
**Stephen Smithee**

Advertising Assistant  
**Dan Ball**

Distribution Manager  
**Erik Nielsen**

Staff Reporters  
**Theresa Hill**  
**Jon Limer**  
**Katie McCarron**  
**Deb McManman**  
**Heather Hafer**  
**Stephen Smithee**

News & Editorial Advisor  
**Pete Peterson**

Production Advisor  
**Dorothy Wearne**

Advertising Advisor  
**Jan Brown**

Wire stories provided by the  
National Student News Service  
This publication is printed through the  
facilities of the Springfield News.

The Torch, the official student-managed newspaper of Lane Community College is published every Friday.

News stories are concise reports intended to be as fair as possible.

Unsigned editorials are the opinion of the newspaper's Editorial Board.

Letters to the Editor should be limited to 250 words and include the author's name, phone number and address. Deadline for the following issue is Monday, 5 p.m.

Commentaries by Torch readers should be limited to 750 words. Deadline for the following issue is Monday, 5 p.m.

The Editor-in-Chief reserves the right to edit commentaries and letters for length, grammar, spelling, libel, invasion of privacy and appropriate language.

Mail all correspondence to: The Torch, Center 205, 4000 East 30th Avenue, Eugene, OR 97405. e-mail: torch@efn.org

Phone numbers:

Newsroom: 747-4501 x2014

Production: 747-4501 x2657

Advertising: 747-4501 x2654

## It wasn't broke but it got fixed anyway

**Ryan Bate**  
*Editor-in-Chief*



Cheated. That's how a lot of returning students are going to feel this term when they find out that the college

took away something they used, something that seemed so innocent.

According to English, Foreign Language, and Speech Department Chair Jack Powell, who chaired a committee over the summer, courtesy appointments are now extinct for those of you "volunteers." (see story, page 1)

The college's lawyers declared that the school's practice of giving volunteers any kind of monetary compensation (i.e. Courtesy Appointments — or free classes)

constitutes the volunteers as "employees," thus subjecting the college to the laws governing employees. And if these volunteers are indeed employees by receiving Courtesy Appointments, then the school must compensate them with at least a minimum wage.

Under the old system, student volunteers, who were given Courtesy Appointments for their services, could potentially sue the college for underpaying them. The college, of course, balked at that risk.

Let's not forget of course that after 20 years of service, the Courtesy Appointment system never once was subject to complaint by the students using it. In fact it was quite the opposite that occurred; most of these students came to volunteer, and expected nothing in return for their services. Upon learning of the free class, they were grateful.

Is the college being paranoid? Who's to say at this point in the game?

It just seems unfortunate not only for the students doing the volunteer work, but also for the students who benefited from the services provided by these volunteers.

Sadly, the great bureaucratic machine in the sky once again has taken away another benefit that students were receiving.

In place of the Courtesy Appointments, the college has now created a few paid student positions around campus, using the money previously set aside for Courtesy Appointments (approximately \$95,000), paying a few students minimum wage to do between 30 and 90 hours per term (between \$140 and \$425). So now the college is spending the same amount for about one-fifth of the personnel.

There's still opportunity for people to volunteer, though free and clear of expectations of rewards.

But, will fewer people volunteer? Let's hope not.

## STUDENTS FIRST! Will be core of LCC Future

**Stephen E. Smithee**  
*Staff writer*



This fall you'll be seeing lots of those big hot pink buttons proclaiming "Students First!" There's even a large banner over the entryway to the Counseling and Career Information Center.

Go ahead and ask about it. After all, it's obviously what the button-wearers want you to do.

It's probably easiest to explain what Students First! is not. It's not just another isolated cubbyhole in a maze fiendishly designed to frustrate new students in some bureaucratic test of one's IQ, where only the cleverest get to benefit from the system.

Students First! is a project to literally put the needs of students above all else, since students are the very purpose and justification for LCC's existence, says Linda Fossen, Vice-president for Student Services.

The main idea of the current stage of the project is to bring every student service to the student, regardless of where the student first enters the LCC system.

For example if you first come into contact with LCC at Financial Aid, you will also have at your disposal Counseling, Disability Services, Admissions, and every other resource - not just the Financial Aid services. The intent is to transform the isolated

Financial Aid Department, the detached Counseling, the remote Disability Services, the distant Admissions and the far-flung rest into one integrated process with teams that will carry each student along from first contact to beyond graduation, if necessary.

In addition, that process will supply guidance through a curriculum designed to provide coherence in each student's learning program, in what will essentially be customized education.

Since there will no longer be separated and isolated departments, plans are being considered to eventually bring all of the various departments under one roof, possibly in a new building dedicated to the purpose, ending the need for students to shuttle from one location to another, paperwork clutched in hands, eyes glazed over with confusion or shiny with panic.

Also, in an exceptional and refreshing departure from the trend of the times, LCC will not be "downsizing" its staff to facilitate the project financially, so the project's intent won't be undermined by personnel shortages, says Fossen.

In the next couple of years the project will encompass the personnel, purchasing, instructional and other departments that support the centrally important learning process of the students. There is much more to come. Inquiries and input by students and staff are encouraged, and can be made in person through the LCC Student Services office (Administration Building, second floor), or by calling them at 741-3075.

## OSPIRG offers internships for students

**Amy Carlson**  
*OSPIRG Campus  
Organiser Commentary*

This fall OSPIRG is offering course credit internships for students interested in project coordination, grassroots mobilization, media work, or research. Through an OSPIRG internship you will gain expertise as we work on: getting big money out of politics and registering students to vote; expanding our right to know

about toxins being used in our communities and their impacts; improving local water quality; and fighting area hunger and homelessness. You will also gain important leadership and technical skills like how to: organize events, hold a press conference, recruit and train volunteers, develop leaders, and set goals and achieve them.

An OSPIRG internship is an excellent way to apply what you are learning and talking about in the

classroom. Building on that knowledge, an internship allows you to tackle the issues and produce results through an active, hands-on approach. Beyond this, you will have great fun working with other students to make an impact on the issues you care about. If you are interested in an internship or doing any volunteering, feel free to stop by the OSPIRG office in the basement of the Center Building or one of our tables, or call 747-4501 ext. 2166.



# Buses now carry bikes

**Theresa Hill**  
Staff reporter

It used to be that only rural routes carried them, but now all the LTD buses have bike racks.

On June 16, the "entire fleet was outfitted with two bike racks on the outside," remarked LTD Marketing Director Cosette Rees. LTD had a demonstration of the bike racks at the Lane County Fair. In addition to the fair demo, LTD offers a training rack and brochure at the Downtown Customer Service Center.

So far, the new bike racks have been a big success, says Rees. In July 5,023 bicyclists took advantage of the new racks. The racks are very safe, especially if the customer follows all the guidelines provided in a brochure, Rees says. The only problems so far are people forgetting their bikes, which they can pick up at customer service. Another good tip, which is surprisingly not found in the brochure, is to remember to take your bike off before getting to a major station stop. This will prevent your bike from getting sandwiched in.

# LTD gives bus passes for helping older riders

**Theresa Hill**  
Staff reporter

Are you an elderly person who still hasn't tried out the city buses? Perhaps you're a student a little low on money for your latest needed bus pass?

If so, Cosette Rees, marketing representative of LTD, has a free offer you can't refuse. Called the Bus Buddy program, it offers volunteer help for the elderly, and a free month bus pass for the volunteers who help them.

There are already 12 volunteers waiting for their first calls to help the elderly. To prepare, each has taken a two-hour training orientation. They will be providing the correct routes, how to ring for a stop, and how to get assistance by using the kneeling and lift features.

"So far all of the volunteers have ridden the bus for a long time, and that made the training really easy." Each one will receive a pass when the training is com-

pleted. Campbell Senior Center, Kaufman Senior Center, Willamalane Senior Activity Center, and LTD are all sponsoring the program, and are sources of information.

In addition to the orientation, the volunteers undergo a criminal background check. When a senior wants to travel someplace, he/she simply plans out the trip and calls one of the centers. Then the center will call on a volunteer and get them to meet, either at the elderly's residence, or at a near by meeting place. Volunteer phone numbers are never given out.

A bonus in the program is restaurants like Mr. Kay's of Valley River Center, and Target in Gateway Mall, are handing out free sodas to the pairs. This is meant to give the "buddies" a little break, and a place to sit down to

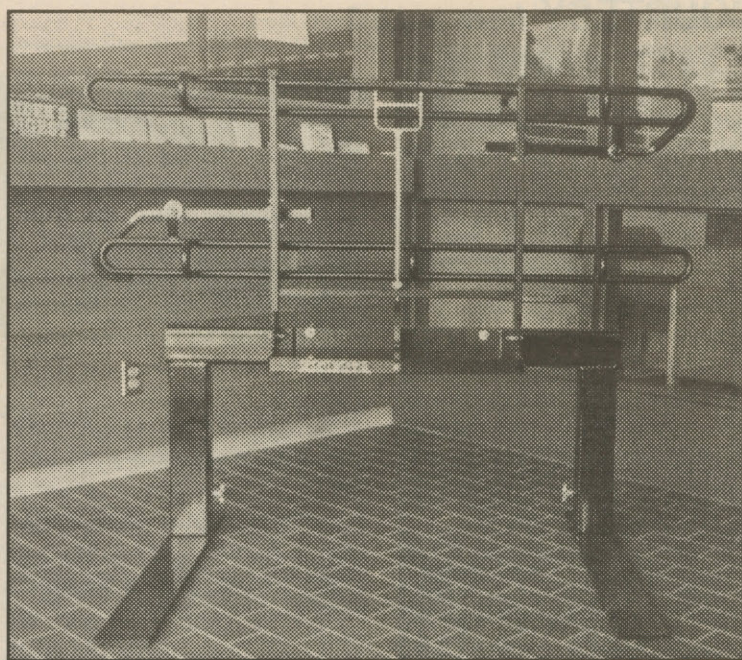


Photo by Lisa Stephenson

## Many Eugene citizens will be taking advantage of LTD's new bike racks

talk about the experience of the trip.

"The volunteers are not meant to be companions, just guides," comments Rees. They're intended to help seniors gain greater independence, freedom and flexibility, better quality of

life, and access to shopping and activities. Rees adds, "Some of the elderly will ride only once, others will do it three or four times to get the hang of it." The next training session is in October; for more information, contact Cosette Rees at 741-6100.

## STUDENT MEDICAL INSURANCE

Available to all students taking six or more college credit classes, also available to their dependents.

Maximum medical expenses during policy year PER accident or illness	\$25,000
Cash deductible PER accident or illness	\$50.00
Benefits paid 80% after deductible	
Basic accident benefit pays 100% for first \$300 after deductible	

All conditions first manifesting prior to your coverage will not be covered.

## Schedule of Premiums per term

	Student	Spouse	Each Child
Accident only Coverage (All Ages)	\$58.00 per term	\$75.00 per term	\$49.00 per term
Accident & Illness			
Under age 36	\$132/term	\$326/term	\$110/term
age 35 - 64	\$203/term	\$260/term	
age 65 - up	\$526/term	\$792/term	

Eligible dependents are the students spouse and unmarried children less than 19 years of age.

Pregnancy — covered as any other illness.

See brochure at registration or student health center.

Policy underwritten by: American Bankers Life Assurance Co. of Florida,  
Served by:  
Manley Administrative Services Co.  
2350 Oakmont Way Suite 200  
Eugene, OR 97401 (541) 485-7488



Hand Crafted  
Delights To Spark  
Your Imagination

44 West Broadway  
On The Downtown Mall  
Mon-Sat 10-6 Sun 12-5

**MAIN  
STREET**  
MUFFLER & BRAKE



744-6646  
2309 Main St  
Springfield, OR 97477



Ask  
Mr.  
Owl!

e-mail the  
torch  
torch@efn.org

<http://www.efn.org/~torch>

e-mail the  
torch  
torch@efn.org

<http://www.efn.org/~torch>



hour she has been able to fund 164 30-hour block positions, but departments have requested 453. Departments whose coordinating staff member was away for the summer may not have submitted requests, so that number could increase. Although this may seem disturbing to staff and students alike, both Powell and Adams stress that the system is new, and further refinement will be necessary.

"The committee will meet throughout the year to evaluate the program," says Powell. "The committee wants to keep the guidelines flexible while it is new. Hopefully, the college will see the value of the program and will find more funding to support it."

"During fall term," according to Powell, "applications will be available for Proficiency Grants. The college will award grants - free tuition for a term - to exceptional students for their

contributions to their department and to other students. Applications for grants can be initiated by the department or the student. The committee hasn't completed details, but Powell says students should watch for the applications to become available through the departments.

Volunteer positions are still available and appreciated in many departments. Volunteers have official status in terms of recognition and liability. One can learn new skills, further develop one's area of interest and meet new people. Check with individual departments to see what is available.

The Courtesy Appointment Committee would like input from staff, faculty and students. Correspondence can be directed to the committee through the Torch office, the President's office, or to Jack Powell, Department of English, Foreign Language and Speech.

## Will the programs be enough?

Students, faculty and staff hope services provided with the help of Courtesy Appointees will continue at the desired levels. Some departments will hardly be impacted by the change, others, according to a staff member, rely heavily on Courtesy Appointees, departments that require specialized skill or knowledge.

Penny Deggelman, math instructor and tutor coordinator, says the Math Resource Center is available for math assistance below Math 111. Math 111 and above (Algebra to Calculus) rely on instructors and tutors to help students. The department recruited through the Federal Work Study Program and through Courtesy Appointments. For adequate tutor availability, Deggelman needs five to eight tutors. "Joan has been very helpful," Deggelman says, "I just hope we can find qualified people through Work Study and other avenues."

Kitty Seymour, coordinator of the Art and Applied Design Department, remembers that in the past volunteers with specialized skills were offered a free class in exchange for their expertise. Later when the Work Study Program revised its guidelines, fewer students received that money, and the students and staff began to use the Courtesy Appointment to help the department with extra jobs.

In reference to the violation of labor laws, Seymour comments, "Courtesy Appointees must not have felt exploited, they kept coming back!"

"Artists can't help themselves, they have to be involved for the sake of the art. Through the Courtesy Appointment, the department could give something back to those who give so much." Seymour is concerned that, in an effort to get all the work done, to keep supplies organized, and to offer needed services to students, higher paid instructors will be forced to do lesser paid work. While praying for enough Work Study students, Seymour is optimistic that things will work out - "That's how we've managed to thrive and prosper!"

Patrick Torelle, Theatre Instructor in the Performing Arts Department, described the departments' interesting use of Courtesy Appointees. "When directing a student in a role, it is often helpful to first issue the direction to an experienced actor. The student then sees how the direction is followed and what is required in playing the role. A Courtesy Appointment was something to offer these experienced and talented community members to participate in the Performing Arts Department instruction."

ment instruction."

Music instructor, Ron Bertucci, agrees that experienced community members enhance the teaching and learning experience. The LCC Chamber Orchestra and Symphonic Band utilize musicians from the community to ensure that the music played is the full sound, not watered down for lack of, say, a tuba, or a full string ensemble. These musicians, some of whom perform with the Oregon Mozart Players and the Eugene Symphony, attended the classes, or should I say, rehearsals as a Courtesy Appointment.

"With their participation, the college is building a respected reputation and an appreciative audience. Without them, the students' orchestral experience just wouldn't be the same." Bertucci says that the systems so far developed don't as yet speak to the needs of the Performing Arts Department. "I feel confident that a way will be found so we can continue to provide the same quality educational experience for our students."

Sharon Thomas, director of the Writing Center, is also optimistic about the new system. While she is concerned that jobs will be more competitive, and wonders how their extensive training program will be paid for, she believes there may be more sense of commitment to the jobs.

"Tutors will work a minimum number of hours a week, so there will be a sense of familiarity between tutors and students using the Writing Center. There will not be a decrease in service or hours, and, in fact, it is likely there will be higher quality tutorial help. Two of the applicants for tutor positions have bachelor's degrees."

Dennis Ward, Micro Lab Coordinator in the Health 201, Instructional Computer Lab, is happy for now. The lab has managed to get enough Work Study funds to keep services at their expected level. It has funds for enough part-timers. Ward says there is room for volunteers in the Computer Labs. "Volunteering is a valuable educational tool and a good learning experience for those just starting out."

Star Glass, instructional specialist in the Science Resource Lab, says that, although at present no volunteers have come forward, there are those who realize that tutoring helps the tutor learn. "Those who do tutor as volunteers will tend to be high quality and dedicated. As a group LCC is full of optimistic, dynamic and dedicated people and this problem can become a creative source."

## HOW TO BUY TEXTBOOKS AND SAVE MONEY

### COME TO THE SMITH FAMILY BOOKSTORE FIRST.

Chances are you will find most of your books at half price.

### BRING THE TITLE AND AUTHOR'S NAME.

It might take some time to find your books, but we will be glad to help you look, and the savings are worth the wait.

### RETURN BOOKS YOU DO NOT NEED.

If you buy the wrong books or drop a class, you can return the books for a full refund.

### SELL YOUR OLD TEXTBOOKS.

After you buy your textbooks, bring in your old books and Smith Family Bookstore will buy them for a very fair price.

# SMITH FAMILY bookstore

768 East 13th  
Eugene, Oregon 97401  
Upstairs in the Smith Building, Next to the Excelsior.  
(503) 345-1651

## THE GIANT OUTDOOR SPORTS SALE!

**Ski Equipment**

**Camping Equipment**

**Snowboards**

**Athletic Equipment**

**Water-skis**

**Bikes & Accessories**

**Scuba Equipment**

**And much, much more!**

**Ultr Ski & Sport Shops**

**Eugene Skin Divers Supply**

**Paul's Bicycle Way of Life**

**Anderson's Sporting Goods**

Save on  
new and used  
merchandise!

**Lane County Fairgrounds Sept. 27 & 28**

**Friday Hours: Noon-8:00 p.m.**

**Saturday Hours: 10:00-8:00 p.m.**



# SPORTS

LETHA RYNAZEWSKI, EDITOR

THE TORCH

747-4501 EXT. 2014

## 1996 Lane Volleyball Schedule

Date	Opponent	Location	Time
Sept. 28	Chemeketa	Salem	1:00 pm
Oct. 2	SWOCC	Lane	6:00 pm
Oct. 4	Clackamas	Oregon City	7:00 pm
Oct. 9	Mt. Hood	Lane	7:00 pm
Oct. 11-12	Cross Over Tournament	Longview, WA	TBA
Oct. 16	Umpqua	Lane	6:00 pm
Oct. 18	Linn-Benton	Lane	7:00 pm
Oct. 21	Pacific JV	Forest Grove	7:00 pm
Oct. 23	Chemeketa	Lane	7:00 pm
Oct. 28	George Fox JV	Lane	7:00 pm
Oct. 31	SWOCC	Coos Bay	7:00 pm
Nov. 1-2	SWOCC Crossover Tourn.	TBA	TBA
Nov. 6	Clackamas	Lane	7:00 pm
Nov. 8	Linn-Benton	Albany	7:00 pm
Nov. 9	Mt. Hood	Gresham	7:00 pm
Nov. 13	Umpqua	Roseburg	6:00 pm
Nov. 21-23	NWAACC Conf. Tourn.	Chemeketa	TBA

•Head Volleyball Coach: Brock Olson

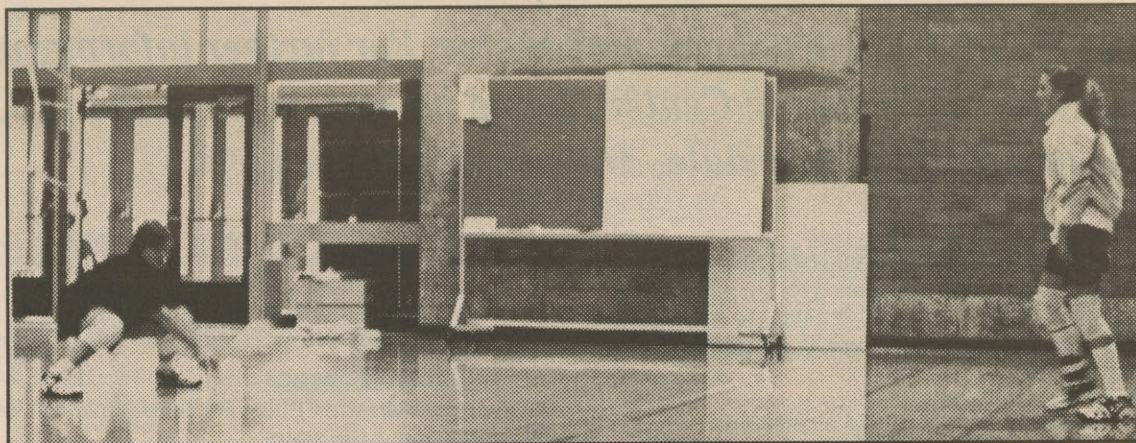


Photo by Danny Armanino

Alicia Hayden (left) and Darla Gravelle (right) go all out in practice for their upcoming matches.

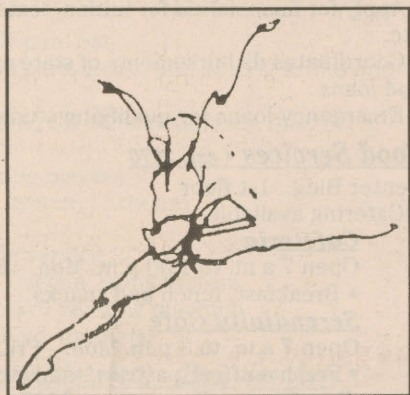
## 1996 Lane Cross Country Schedule

Date	Meet	Location	Time
Sept. 28	Northwest Classic	Eugene	9:30 am
Oct. 5	Willamette U. Open	Salem	TBA
Oct. 20	U. of Oregon Invitational	Eugene	11:00 am
Oct. 26	Southern Region Champ.	Sandy	11:00 am
Nov. 9	NWAACC Championships	Spokane, WA	11:00 am

•Head Cross Country Coach: Brad Joens

•Men's and Women's Coach: Tim Boyce

## BACKSTAGE ON BROADWAY



### DANCE SHOES

BALLET • JAZZ • TAP  
FOLK • MODERN

CAPEZIO • BLOCH • FREED • CHACOTT

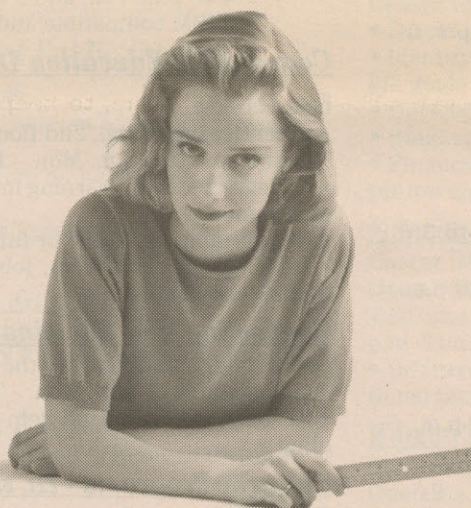
### LEO'S TIGHTS TOPS

CAPEZIO • DANSKIN • DANCE FRANCE  
MARIKA • BARISHNIKOV • and MORE!

Hours: Monday - Saturday 9:30-5:30  
Sundays 12:00-5:00

41 W. Broadway Eugene Downtown Mall  
686-2671

After eight months of cafeteria food, all-nighters,



cramped dorms, and that annoying person down the hall, you'll be ready for this. Really ready.

### BofA'S SPRING BREAK SWEEPSTAKES

Think Spring Break. Bank of America is. In fact, they want to send you and three friends on a Spring Break getaway with Alaska Airlines. Or give you other cool prizes like a Specialized® mountain bike, a Pentium™ computer, even \$1000 towards your tuition.

### GET A GREAT CHECKING ACCOUNT & ENTER TO WIN

Open a BofA Versatel® checking account and you'll be automatically entered to win. The account is free of monthly service charges and comes with a free order of checks. Also available: student loans, credit cards, and more.\* Sign up today at any local branch or call 1-800-USE-BofA. (TTY/TDD users dial 1-800-845-8893.)



Bank of America

Eugene Branch • 201 East 11th Avenue • 342-5810



No purchase necessary. Sweepstakes begins August 10, 1996 and ends October 24, 1996. See official rules (available at any participating branch) for details. Void where prohibited. \*Student loans and credit cards subject to credit approval. Member FDIC.



# Lane Community College Student

*If no direct dial number is listed, dial 747-4501 and use the extensions listed in the directory below.*

*This directory is not comprehensive. For further information, see the Student Resource Center (listed below), refer to the LCC catalog and Fall '96 schedule, and read the Torch.*

## **Admissions/Student Records • 726-2207**

Center Bldg., 2nd floor, room 210  
Open 8 a.m. to 1:30 p.m. and 2 p.m. to 4:45 p.m. Mon. - Wed. and Fri., and 9 a.m. to 1:30 p.m. and 2 p.m. to 4:45 p.m. Thu.

- Enrollment procedures
- Transcript information and evaluations
- International admission specialist available

## **Affirmative Action • ext. 2040**

Center Bldg., 2nd floor, room 215  
Open 9 a.m. to 5:30 p.m. Mon. - Fri.  
• Review of sexual harassment complaints by students and staff  
• Recommendations and referrals for actions  
• Community outreach to minorities  
• Reviews of hiring practices and procedures

## **ASLCC • ext. 2290 or 2330**

(Associated Students of Lane Community College) - Student Government  
Center Bldg., 4th floor, room 479 Adam Young, President  
• Represents student interests and concerns, promotes student involvement  
• Some services funded by Student Government fees are: Child Care Co-op; Student Resource Center; Legal Services; OSPIRG; Cultural Programs

## **ATLAS (Auto-Touch Lane Access System)**

Computerized Student Information Access  
Locations: Center Bldg. Lobby, 2nd floor, 4 terminals  
Center Bldg. Cafeteria, 1st floor, 1 terminal  
• Obtain information on class schedules, transcripts, financial aid, and events

## **ATM's (Automated Teller Machines)**

Cash Machines  
Center Bldg., 1st floor, cafeteria area

## **Bookstore • 726-2256**

Center Bldg., 2nd floor lobby and up the stairs to 3rd floor  
Open 8 a.m. to 5 p.m. Mon. - Thu., 9 a.m. to 4:30 p.m. Fri.  
Closed Nov. 11, 28 and 29.  
Special Fall Term days and hours:  
Sep. 24 (Tue.) - Sep. 26 (Thu.), 8 a.m. - 7:30 p.m.  
Sep. 28 (Sat.) and Oct. 5 (Sat.), 8:30 a.m. - 12:30 p.m.  
Sep. 30 (Mon.) - Oct. 3 (Thu.), 8 a.m. - 7:30 p.m.  
• Bus passes and tokens, meal tickets, stamps

## **Campus Ministry • ext. 2814**

Center Bldg., 2nd floor, room 242  
Open 8 a.m. to 4:30 p.m. Mon. - Fri.  
• Denominational and nondenominational student support services  
• No Cash Clothing Stash - free clothing to LCC students - PE Bldg., room 301  
• Food vouchers for qualifying students

## **Career Information Center • ext. 2297**

Center Bldg., 2nd floor, to the left of the main entrance  
Open 9 a.m. to 7 p.m. Mon. - Thu., 9 a.m. to 5 p.m. Fri.  
• Current information on careers, nationwide  
• Self-assessment testing to guide career choices

## **Check Cashing**

Administration Bldg., 1st floor, Financial Services cashier under the stairs  
Open 8 a.m. to 5 p.m. Mon. - Fri.  
• Cash personal checks up to \$5.00 with current student body card  
and photo ID, current address and phone number  
• No two-party checks  
• Fee on returned checks is \$12.00

## **Child Care Co-op • ext. 2025**

ASLCC Chilcare co-op Bldg., by PE track, N.W. side of campus  
Open 7:30 a.m. to 5:30 p.m. Mon. - Fri.  
• Low-cost on-campus child care for students with children  
• Work Study students are encouraged to apply  
• Practicum experience and workshops available

## **Child Care Resource Connection • 726-3954 or 1-800-222-3290**

1077 Willamette St., next to LCC Downtown Center  
Open 10 a.m. to 2 p.m. Mon. - Tue. & Thu. - Fri., 12 p.m. to 2 p.m. and 5 p.m. to 7 p.m. Wed.

- Child care referrals and other information

## **College Finance**

Administration Bldg., 1st floor, Financial Services cashier under the stairs  
Open 8 a.m. to 5 p.m. Mon. - Fri.  
• Pay for tuition, class fees, etc.  
• Buy computer time  
• Obtain information on Financial Aid disbursement

## **Computer Labs**

Purchase lab time and lasercards at Financial Services Cashier (Admin. Bldg., 1st floor, under the stairs; open 8 a.m. to 5 p.m. Mon. - Fri.). \$1.00 per hour, or \$36.00 for unlimited use for the term.

### **Microcomputer Lab • ext. 2288**

Health & PE Bldg., 2nd floor, room 210  
Open 7:30 a.m. to 9:45 p.m. Mon. - Fri., 10 a.m. to 4:45 p.m. Sat. & Sun.  
• IBM compatible and Mac microcomputers

## **Center Lab • ext. 2436**

Center Bldg., 4th floor, room 478  
Open 8 a.m. to 4:45 p.m. Mon. - Fri.  
• Macintosh Quadra, SE and Classic microcomputers

### **Downtown Center Lab • ext. 2936**

1059 Willamette St.  
Open 9 a.m. to 6:45 p.m. Mon. - Thu., 9 a.m. to 4:45 p.m. Fri., and 9 a.m. to 2:45 p.m. Sat.  
• IBM compatible and Macintosh computers

## **Cooperative Education Department • 726-2203 •**

**Fax: 744-4168**

Apprenticeship Bldg., 2nd floor, room 201  
Open 8 a.m. to 5 p.m. Mon. - Fri.  
• College credit for learning in a variety of tailored work environments  
• Help finding part-time or full-time Co-op positions  
• Information on careers, job hunting techniques and interviewing skills

## **Counseling and Advising Center • 726-2204**

Center Bldg., 2nd floor, to the left of the main entrance  
Open 9 a.m. to 7 p.m. Mon. - Thu., 9 a.m. to 5 p.m. Fri.  
• Academic advising and help with student class scheduling

## **Cultural Programs • ext. 2335**

Center Bldg., 4th floor, room 479  
• Fall Welcome Week events  
• Martin Luther King, Jr., Celebration

## **Denali - Student Literary Magazine • ext. 2830**

Center Bldg., 4th floor, room 479  
• Student art and literary magazine, published three times per year  
• Submit your writing, poetry, art and photographs - call for info

## **Dental Hygiene Clinic • 726-2206**

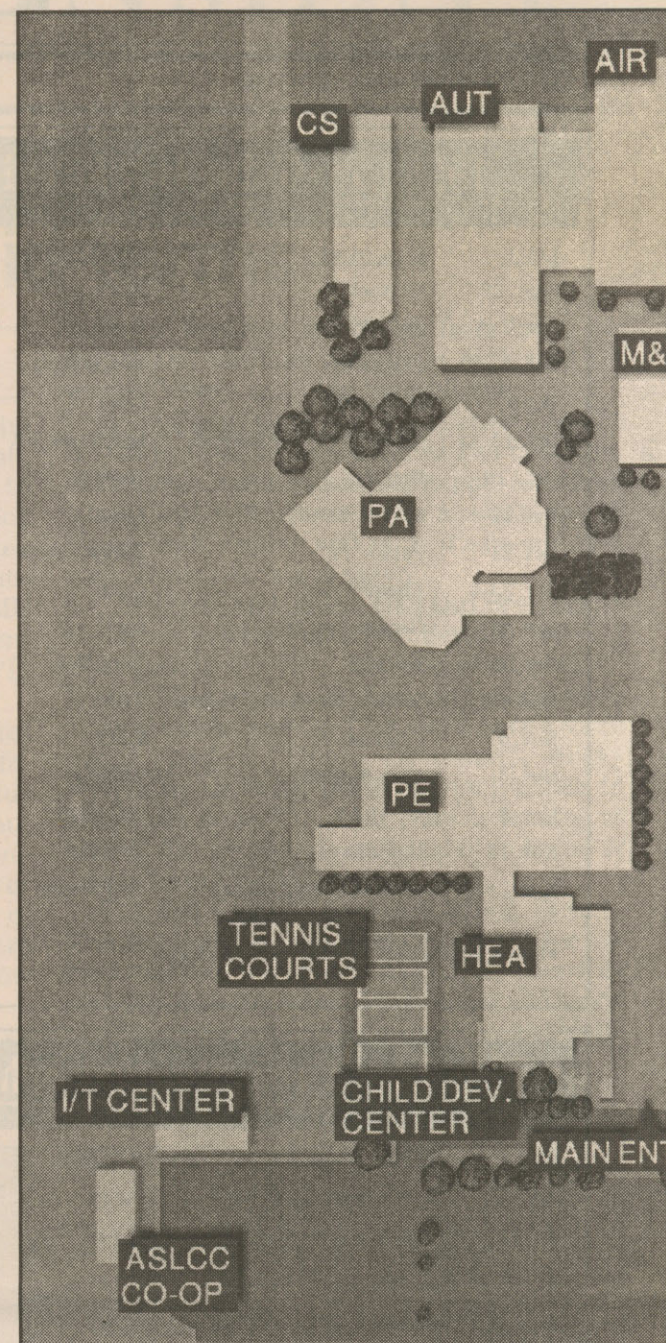
Health & PE Bldg., 2nd floor, room 273  
Call for appointment - 8:30 a.m. to 4:30 p.m. Mon. - Fri.  
• Limited dental care for Lane County adults and children  
• Free evaluations, low cost X-rays, cleaning, and fluoride treatments

## **Disability Services • ext. 2150**

Center Bldg., 2nd floor, room 217  
TDD (for hearing impaired only) 741-3079  
Open 7:30 a.m. to 6 p.m. Mon. & Tue., 7:30 a.m. to 5 p.m. Wed. - Fri.,  
Closed 12 p.m. to 1 p.m.  
• Provides academic accommodations to students with medically and/or professionally documented disabilities  
• Assistance with registration, program planning, resource referrals, notetaking assistance, interpreters, test accommodations, textbook recording, relocation of classes  
• Provides accessible tables and chairs

## **Federal Work Study**

Forum Bldg., 3rd floor, room 304 • ext. 2822  
Open 8 a.m. to 12 p.m. and 1 p.m. to 5 p.m. Mon. - Fri.



- Employment under Federally-funded Financial Aid (Contact the Financial Aid department first)
- Free computerized resume service

## **Financial Aid • 726-2205**

Center Bldg., 2nd floor lobby  
Open 8 a.m. to 5 p.m. Mon. - Fri. (counter and phone)  
Special Fall Term days and hours:  
Sep. 24 (Tue.) and Sep. 25 (Wed.), 8 a.m. - 7 p.m.  
Sep. 28 (Sat.) and Oct. 5 (Sat.), 8:30 a.m. - 12:30 p.m.  
• Apply for financial aid for tuition, texts, living expenses, etc.  
• Coordinates disbursements of state and federal grants and loans  
• Emergency loans for qualifying students

## **Food Services • ext. 2670**

Center Bldg., 1st floor  
• Catering available

### **Cafeteria**

Open 7 a.m. to 1:30 p.m. Mon. - Fri.  
• Breakfast, lunch and snacks

### **Serendipity Cafe**

Open 7 a.m. to 3 p.m. Mon. - Fri.  
• Fresh muffins, pastries, sandwiches, goodies, etc.  
Renaissance Room • ext. 2697

### **Dinners**

### **Taco Time & Buffalo Grill**

Open 10 a.m. to 7 p.m. Mon. - Thu., 10 a.m. to 5 p.m. Fri.,  
8 a.m. to 2 p.m. Sat.  
• Lunch and snacks

## **Job Placement Service • 726-2217**

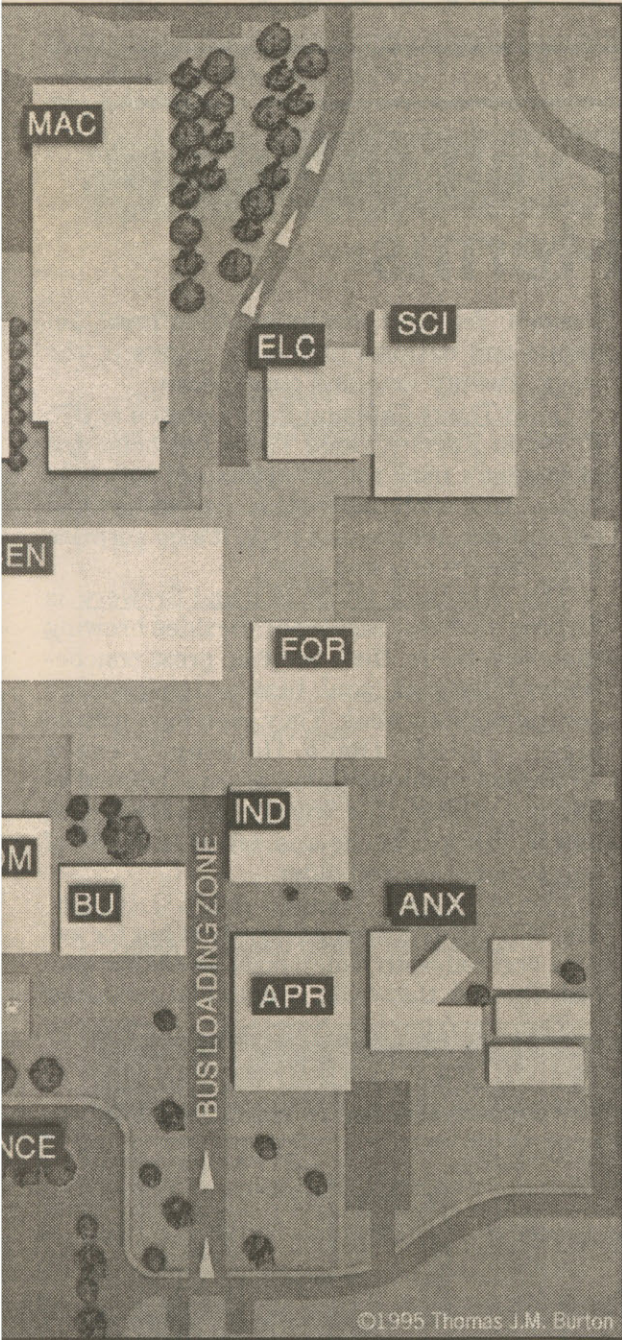
Forum Bldg., 3rd floor, room 302  
Open 8 a.m. to 4:30 p.m. Mon. - Thu., and 8 a.m. to 3:30 p.m. Fri.  
• Full and part time openings in the Eugene & Springfield areas  
• On-campus student employment  
• Student employment and graduate placement  
• Free computerized resume service

## **Legal Services • ext. 2365**

Center Bldg., 4th floor, room 479  
8 a.m. to 12 p.m. Mon., 8 a.m. to 5 p.m. Tue. - Thu.  
Attorney available 1:30 p.m. to 4 p.m. Tue. & Thu.,



# Services Directory for Fall 1996



10:30 a.m. to 4 p.m. Wed.

Call for appointment

Closed Fri.

- Free legal service for LCC and high-school completion students
- No court representation, but referrals can be made

## **Library • 726-2220**

Center Bldg., 2nd floor, to the right of the main entrance  
Open 7:30 a.m. to 10 p.m. Mon. - Thu., 7:30 a.m. to 5 p.m. Fri.,  
and 9:30 a.m. to 3:30 p.m. Sat.

- 62,000+ books, 450 periodicals, and 18,000 sound and video recordings
- Microfilm, microfiche, CD-ROM databases, Internet access
- Audio and video tape players
- Computer catalog system (Athena)
- Telecourse videos
- Interlibrary lending service
- Access to Univ. of Oregon Janus system
- Copiers and copy-card vending machine
- Accessible to disabled students

## **LTD (Lane Transit District) - Bus Service**

- There is an LTD station on the north side of the Apprenticeship Bldg. Route maps and schedules are posted at east and west ends of the shelter.
- Students can purchase LTD passes or tokens at the LCC Bookstore
- Routes 3X, 81, 82, 83, 85 and 92 serve the LCC campus directly
- Easy access to downtown Eugene, the UO, and Springfield
- Wheelchair access lifts and bike racks
- Obtain fare and other info and route schedules at the LCC Student Resource Center or LTD Customer Service Center

## **LTD Customer Service Center • 687-5555**

1004 Willamette St., Eugene

Open 6 a.m. to 11:25 p.m. Mon. - Fri., 9 a.m. to 5:30 p.m. Sat. & Sun.

## **Math Resource Center • ext. 2399**

Math & Arts Bldg., 2nd floor, room 211

Open 8:30 a.m. to 3:20 p.m. Mon. - Fri., 6 p.m. to 8:20 p.m. Tue. & Wed.

- Tutors and resources for math students

## **Multicultural Substance Abuse Prevention •**

**ext. 2178**

Apprenticeship Bldg., 2nd floor, room 215A

Call for hours or appointment

- Chemical dependency assessments and treatment referrals
- Individual and group counseling
- Education, support and recovery groups
- Twelve-step programs for alcohol, drugs, codependency and eating disorders

## **Multi-Cultural Center • ext. 2276**

Center Bldg., 4th floor, room 409

Open 8 a.m. to 5 p.m. Mon. - Fri.

- Support for minority and international students to ensure academic success
- Cultural events, tutoring, scholarship & grant information, and information on minority and international student clubs
- All LCC students are welcome

## **Native American Student Association • ext. 2238**

Center Bldg., 2nd floor, room 222

Open 9 a.m. to 5 p.m. Mon. - Fri.

- Assistance to American Indian and Alaskan Native students
- Information about BIA procedures, financial aid, courses, majors

## **Ombud Team**

**Debra Lamb • ext. 2915**

**Sharon Moore • ext. 2686**

**Jerry Sirois • ext. 2329**

(A problem-solving team concerning complaints of a non-legal nature regarding the college)

- The Ombud Team addresses student and staff complaints relating to college policies or actions
- Offers impartial advice, referrals and mediation to resolve problems

## **Oregon Employment Division Kiosk**

Center Bldg., 1st floor, cafeteria area

- Computerized access to employment opportunities

## **OSPIRG (Oregon Student Public Interest Research Group) • ext. 2166**

Center Bldg., Basement, at bottom of main entrance stairs

- Education and advisory group on health and social issues at the state level
- Environmental concerns and projects

## **Phi Theta Kappa**

**Call Velma Jessen, ext. 2157 or**

**Lois Zimmerman, Pres., 342-1578**

- International honors society for students with a cumulative GPA of 3.5 or higher

## **Photo ID • ext. 2336, 2339 or 2539**

Center Bldg., 2nd floor, room 202, off of lobby to the right of the Bookstore staircase

- Obtain your student photo ID cards here, after registering

## **Science Resource Room • ext. 2449 (Science office)**

Science Bldg., room 111

Open 7:30 a.m. to 4 p.m. Mon., Thu. & Fri., 9:30 a.m. to 6 p.m. Tue. & Wed.

- Tutors and resources for science students

## **Student Activities • ext. 2336**

Center Bldg., 2nd floor, room 202B, off of lobby to the right of the Bookstore staircase

Open 8 a.m. to 5 p.m. Mon. - Fri., and until 6:30 p.m. Tue. & Wed.

- Schedules and coordinates non-academic events and services, including: political events, activities, meetings, information tables, bulletin board postings, chartered clubs and organizations, Fall Welcome Week, Lane County Fair, etc.
- Oversees the Photo ID booths

## **Student Health Services • ext. 2665**

Center Bldg., 1st floor, room 126, past Taco Time

Open 8 a.m. to 12:30 p.m. and 1:30 p.m. to 4 p.m. Mon. - Thu., 10 a.m. to 12:30 p.m. and 1:30 p.m. to 3 p.m. Fri. Limited evening hours may be available

- Services are free or very low cost to students - bring LCC ID
- First aid, immunizations, tuberculin tests
- Lab tests, diagnoses and treatments of most illnesses
- Pregnancy tests, birth control, women's health care
- Prescriptions and X-rays
- Health information
- Assistance to students with disabilities

## **Student Records - see under Admissions**

## **Student Resource Center • ext. 2342 • Fax: 744-**

**3980**

Center Bldg., 2nd floor lobby

- Noni Lundy, SRC Director
- Help with nonacademic problems on and off campus
- Get directions to services, facilities and classrooms
- Voter registration, fax service, information and referral on housing and child care
- Ride sharing and LTD bus information
- Sponsors the student textbook exchange

## **Students First!**

**Contact: Linda Fossen, Vice-President for**

**Student Services • 741-3075.**

**Marie Matsen, Vice-President for College Op-**

**erations • ext. 2311, or**

**Linda Waddell, Assistant to the President**

**• ext. 2313**

- A comprehensive project to end departmental isolation and ensure students of a system that makes all resources immediately available
- Student and staff input is appreciated

## **Testing Center • ext. 2324**

Center Bldg., 2nd floor, room 227

Skills Tests:

8:30 a.m. to 5 p.m. Mon. & Fri.

4 p.m. to 7 p.m. Tue. & Thu.

8:30 a.m. to 3 p.m. Wed.

FAA Tests:

8:30 a.m. to 5 p.m. Mon. & Fri.

8:30 p.m. to 7 p.m. Tue. & Thu.

8:30 a.m. to 3 p.m. Wed.

GED Tests:

8:30 a.m. to 7 p.m. Tue. & Thu.

- Writing Test at 12:45 p.m. or 4 p.m. only

- New starts must be in the testing office at 8:30 a.m.

## **The Torch - Student Newspaper • ext. 2014**

Center Bldg., 2nd floor, room 205

- The students' public forum; get involved - call, write or drop by

## **Transitions To Success • ext. 2837**

Center Bldg., 2nd floor, room 213A

- Displaced Homemaker/Single Parent Program
- Identify interests and skills, set education, career and life goals
- Develop study skills, strengthen math skills
- Build support networks
- Financial Assistance available for transportation and tuition costs as well as some childcare assistance

## **Veterans Services • ext. 2663**

Center Bldg., 2nd floor, room 210

Open 8 a.m. to 1:30 p.m. and 2 p.m. to 4:30 p.m. Mon. - Wed. and Fri., and 9 a.m. to 1:30 p.m. and 2 p.m. to 4:30 p.m. Thu.

- Information regarding eligibility for Veterans educational benefits

## **Women's Program • ext. 2353**

Center Bldg., 2nd floor, room 213

Open 8 a.m. to 5 p.m. Mon. - Fri., and until 7 p.m. Tue. • ACCESS program - Alternative Career Choices for Equitable Student

Success, Introductory life-planning class for career exploration and specific classes to introduce women to non-traditional careers: auto mechanics; construction; flight maintenance, etc.

All taught by women

- Women's Center - Resources, referrals, advising, peer support, library, lounge, refreshments
- Transitions to Success - displaced homemakers/ single parent program
- Seminars, workshops and "brown-bags" - lunch time sessions with guest speakers

## **Writing Center • ext. 2145**

Center Bldg., 4th floor, in lobby near room 460

Open 8 a.m. to 5 p.m. Mon. - Fri.

- Free writing tutor service to all students
- Help with any writing assignments from any class
- Tutoring for ESL (International) students
- Book loans and other resources
- Drop-ins welcome - no appointment needed



**Now available in Nashville, Tennessee.**

<http://www.efn.org/~torch/>



# ARTS & ENTERTAINMENT

BRYAN PETERSEN, EDITOR

THE TORCH

747-4501 EXT. 2014

## Greetings to ya'

Bryan Petersen  
A&E Editor

Hello and good day, Torch readers. I just want to take a second to introduce myself and give you an idea what to expect over the following months.

As the A & E editor, it is my job (and pleasure) to keep you up to date on all the events at LCC which fall under the broad category of "Arts and Entertainment," such as plays, musical performances, art exhibits and

more.

Beyond that, I feel that Eugene plays a large part in the burgeoning Northwest music scene, with great acts from various musical backgrounds stepping up right and left. I plan on reviewing local live shows and interviewing the artists putting them on, to help the student population become aware of these great acts so they can support them and keep the scene going.

See Greetings, page 12

## What to do when you should be studying for mid-terms

Bryan Petersen  
A&E Editor

Are you new to the area? Looking for the best places to check out live music? Well, the A & E section of the Torch is here to help. Every week, we will feature our "Rock Solid Entertainment" music calendar (see page 12) to keep you up-to-date on live music in the area. With the exception of EMU hall on the U of O campus and the Hult Center, most live music in the area is located in the following venues:

**The W.O.W. Hall.** Located at the corner of 8th and Lincoln, this place has been a favorite of musicians and fans for years. This is Eugene's premier "over and under" music hall — those of you under twenty-one can attend all shows as well as the over twenty-one crowd, who have the option of going downstairs into the basement where adult refreshment is served and the show upstairs is displayed on big-screen t.v.

**John Henry's.** Located at 136 E. 11th. As Eugene's premier alternative-rock bar, John

Henry's features live music from local, regional and national acts most nights of the week. Twenty-one and over please.

**Good Times Cafe and Bar.** Located at 375 E. 7th in Eugene. Good Times has been one of Eugene's most rockin' nightspots for a long time. And with their wide assortment of blues, funk, reggae and rock, it's no surprise why. Twenty-one and older.

**The Wild Duck Music Hall and Brewery** is Eugene's newest nightspot. Besides brewing their own beers, they brew up great concoctions of live rock, soul, funk and much more several nights a week. They even have a disco night, called "Disco Delirium", every Wednesday night for those of you inclined to shake it a little. The Wild Duck is located at 169 W. 6th in Eugene and caters to those of you twenty-one and older.

**The Mill Camp.** Located at 215 Q. Street, The Mill Camp is Springfield's best bet for live rock and roll, with ladie's night and other specials through the week. Twenty-one and older.

There you have it. Now that you know the right spots, go out and have some fun!

### Do You Have Asthma?

You may qualify to participate in a  
**Clinical Research Trial of an  
Investigational Asthma Medication**

**If you are:**

- \* 12 years or older
- \* Using asthma medication daily
- \* A non-smoker with limited smoking history

**You may receive:**

- \* Examinations, breathing tests, laboratory testing, and study medication at no charge
- \* Compensation for study participants

**Allergy & Asthma Research Group**  
1488 Oak Street Eugene, OR 97401  
**683-4324**

Robert F. Jones, M.D.  
Kraig W. Jacobson, M.D.

**NO REFERRAL NECESSARY**

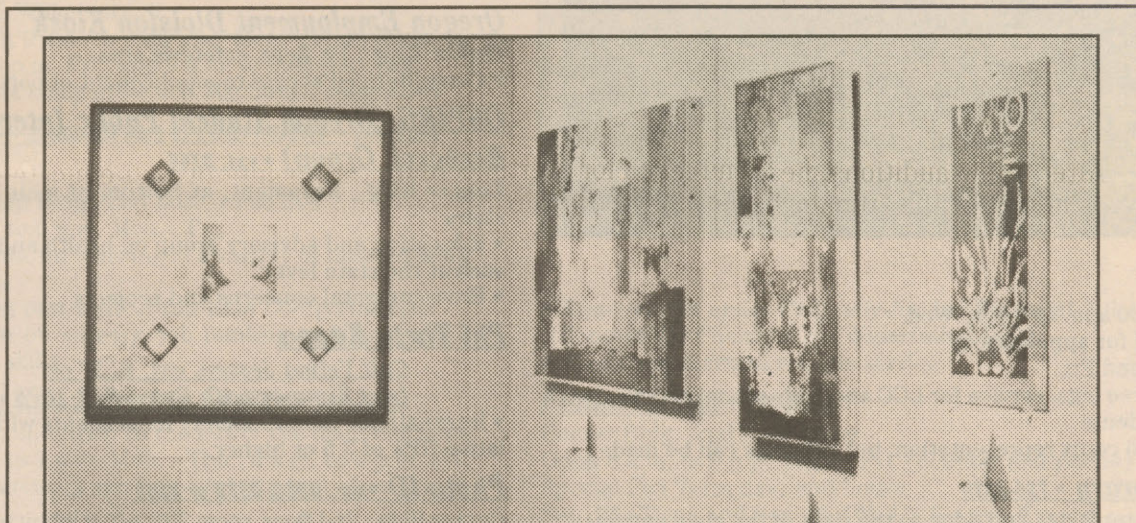


Photo by Lisa Stephenson

The works of the LCC art faculty may be viewed at the gallery on campus. The gallery is located in the Math and Art building.

Those of you reading this paper right now (you know who you are) are probably eligible to become members, and therefore owners of a \$250 million institution. Cool, huh? Cool because SELCO's member-owners get privileges like excellent rates on savings, lower interest on loans and Visa cards, and services from car buying to professional insurance and investment help. Staff, and current and former LCC students are eligible to become members. SELCO has loans for all the important stuff in life—cars, college, computers, homes, home improvements, and vacations. SELCO's got convenient locations and hours, and an ATM right there in the LCC cafeteria.

**686-8000**  
<http://www.selco.org>

**SELCO**  
CREDIT UNION  
We Stand Strong Together

## Mutual Trust

24-hour Access

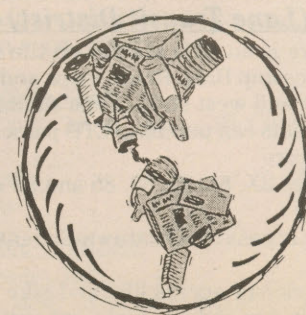
### Life-long Relationships

Computer Loans

Auto Loans

Student Loans

**RECYCLE IT  
ALL**



**RECYCLE IT  
RIGHT**

A public service announcement courtesy of  
this publication and Lane County Recycling



[torch@efn.org](mailto:torch@efn.org)



we're shooting this week." He earned nearly \$800 for a few days work.

Some more complicated shoots, like the one filmed at Silke Field, involved even more details. The actors had to line up as early as 5:30 a.m. and don some of the most uncomfortable clothing items that came out of the early 70s. They were sent to "dressing rooms" (bathrooms inside of Springfield High School) to try on itchy wool/acrylic sweaters, polyester jackets, knee-length fringed suede vests, or calf-high "go go" boots. One person laughingly commented, "I didn't dress like this in the 70s!"

Although this was a warm 78-degree day in Eugene, the actual time and place of the action being filmed was the NCAA track and field championships at Drake University Stadium in Iowa in the spring of 1970. So, the extras had to "pretend" it was cooler than it actually was.

Pedro Shanahan, a former LCC student who works locally as an actor/musician/cook, was the stand-in, or "body double" for actor Billy Crudup, who portrays Steve Prefontaine in the film. Shanahan says he got the job by showing up repeatedly, dressed in different outfits, until the movie people were finally convinced that he worked for them.

After a few auditions, he got the part of the "running double," taking Crudup's place on the field and going through the paces with the cinematographer until the movie crew perfected the lighting and other details. Then, the director and actor Crudup took over, and the actual scene would be shot.

But running too much literally "ran me into the ground," says Shanahan, who had to stop because of repeated stress fractures. Still, he says that the movie people were "super-friendly" and that "Overall, I'm very grateful for the experience."

On a movie set like "PRE," a typical production assistant can earn \$50 to \$100 per day. Duties may involve carrying cables, organizing, keeping track of people and equipment, or being an all-around go-for for other crew members. Gina Graham was hired a production assistant ("extras wrangler," instructing the extras for the crowd scenes), says that there are many ways to get work on a movie crew.

She says to be there and show them what you can do. Whether that means volunteering as an intern (if you are a college student), working as an unpaid or paid extra in crowd scenes, or applying for jobs in the office or on the technical crew, depends upon an individual's work experience.



Billy Crudup (right) portrays Steve Prefontaine's trademark style in a scene filmed at UO's Hayward Field.

An easy entry-level position would be the food service department, often called "craft services." Graham says to contact the production office with a resume detailing any experience that could be remotely linked with the film, show up and be very persistent. She adds that interested people should "Ask, ask, ask ... let them know you're willing to do anything."

The crowd extras can be "paid" in prizes and food, or up to \$8 per hour, with time-and-a-half for overtime. And, the experience can be an exciting and rewarding one for many.

Will Matthews, an LCC Media Arts and Technology major, says that his experience as a paid extra was fun, but next time he wants to be a production assistant, because "... the food was better for the P.A.s ..." Matthews got a taste of the specially-catered crew food (fresh fruit and gatorade, for example) by sneaking into their line, instead of partaking of the hot dogs and lemonade served to the extras.

According to Karen Lucier, president of Mid Oregon Production Arts Network, or MOPAN, there is an "upward trend" for actors in this area. Her talent agency, Unlimited Model & Talent Agency, Inc., provided about 35 actors for "PRE." She says there is more demand for "generic" rather than "beautiful people" for on-camera work in film and television.

Lucier says that her experience working with this film crew has been "educational ... (it has) taught us the good and bad side of Hollywood."

Shanahan adds that the movie people "... know it's really happening here — there are plenty of well-educated individuals working here. (The movie crews) can pay people a lot less to do the work."

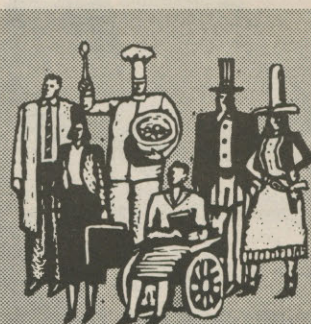
There is no official word from the film office on the release date for "PRE." When asked if it would premiere in Eugene, one of the PAs on the set said "It probably won't."

*Editor's note: Deborah McManman is TORCH Production Manager, graphic designer, and freelance videographer, who worked as both an unpaid and as a paid extra on the set of "PRE." She is currently producing a documentary about Steve Prefontaine, which she says "... will definitely premiere in Eugene ..." if she has anything to say about it.*

NOTE: To find out about jobs in film and video field in Oregon, call: The Oregon Film & Video Office Jobs Hotline at 1-503-986-0212.



Locals residents of Eugene, ready for a full day's work on a movie set, file onto the track at 6:30 a.m.



## Put Your Education To Work. Now.

No matter what your career aspirations... you can get real job experience, now, while you're still in school. Cooperative Education helps college students like you get on-the-job training and earn college credit at the same time. Call Co-op at 726-2203.

COOPERATIVE EDUCATION

LANE COMMUNITY COLLEGE

## Light's MUSIC CENTER

Two Convenient locations for all of your musical needs

521 Main St.  
Springfield  
746-3822

142 W. 8th Ave.  
Eugene  
686-4270



**BIJOU**  
ART CINEMAS  
492 E. 13th • 686-2458  
**ART FILMS**

**Wallace & Gromit**  
THE BEST OF  
AARDMAN ANIMATION

"SEDUCTIVE AND RAVISHING!"  
— Kevin Thomas, LOS ANGELES TIMES  
MARTIN SCORSESE presents ROBERT & RAYMOND HAKIM  
**PURPLE NOON**

"DAZZLING! A DELIGHT!"  
— Rene Rodriguez, MIAMI HERALD  
"OUTRAGEOUS, FUNNY and a visual delight!"  
— SISKEL & EBERT  
**Celestial Clockwork**

**BIJOU**  
ART CINEMAS  
492 E. 13th • 686-2458  
**HEART FILMS**

**MANNY**

**NELLY AND MONSIEUR ARNAUD**  
(NELLY et M. ARNAUD)

★★★★★  
CHRISTIAN SCIENCE MONITOR  
NEWSPAPER NEWSPAPERS  
Catherine Deneuve  
Jacques Demy's the  
**umbrellas of cherbouurg**

**BIJOU**  
ART CINEMAS  
492 E. 13th • 686-2458  
**SHOCKIN' FILMS**

**Girls Town**

this ain't no 90210...

**ROCKIN' FILMS**  
**HONG KONG**  
**LATE NIGHT**  
**FILMFEST!**





## HOW TO PLACE A TORCH CLASSIFIED!!

- Step 1:** Pick up and fill out a form (located outside the Torch office.)
- Step 2:** Place your newly filled out form in the classified ad box (located inside the Torch office on the mailbox).
- Step 3:** Watch for your ad in the following week's Torch.
- Step 4:** Repeat steps 1-3 to place a new Torch Classified.

**\*make sure to follow instructions on classifieds ad form.**



### OPPORTUNITIES 23

Volunteer training - crisis lines and in-person peer support. Starts Oct. 7. Call 484-9791 for info.

Design Students!! Torch production staff needed. If you want to help produce this glorious publication, please inquire at the Torch Office, and speak with Deb, Jack, Ryan, or Dorothy.



### HELP WANTED 21

Childcare provider needed for our 1 year old son. Two afternoons per week. References required. Education background preferred. 343-7461



### FOR SALE 01

Baseball card lovers! Over 5,000 cards for sale. All for \$150 OBO. Call Dan at ext. 2654 or ext. 2014.

Eighties Blowout Extravaganza! 15 dozen neon blue tube tops. 45 pairs of hunter's orange spandex. 27 pairs of large fruit-shaped earrings. Collectibles! Great for new wardrobe! Take all for only \$5,000! 979-0292



### AUTOMOBILES 04

1987 Chevy Nova for sale. \$950 OBO. Call Lisa at 747-9347.

For Sale: 1987 Nissan Sentra. Lots of new parts. Runs great, gets 30+mpg. 183k highway miles. \$1100 OBO. Call Ryan at 607-0561.

1987 Honda Civic Si - excellent condition. 1986 Mazda RX-7 - good condition. Must sell. 683-9037

FIXER-UPPER -- 1978 AMC Pacer. Needs paint, tires, wheels, dash, windows, chassis, exhaust system, and motor. Beautiful vinyl seats! Grill intact. Must see to appreciate. \$10,000/firm. Call 979-0292



### MESSAGES 32

To this year's Torch staff -- good luck. And remember: the Scoopfarce will be with you, always. -- Scoopy

Has anyone seen my taco sauce?

Dale Duvall - Thanks for all of your help. We couldn't have done this without you. The Torch staff

Happy Birthday! Steven C. Stanford -- from Designing Woman

## Hillary from page 1

which would pay basic costs at the vast majority of community colleges.

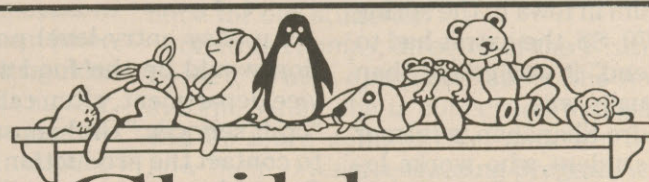
LCC Vice President of Student Services Linda Fossen, who also attended the first lady's speech, remarked, "It's wonderful . . . I think students are shouldering way too much debt. America is starting to realize that higher education is critical for our future."

Clinton also echoed her husband's support for initiatives giving parents that are sending their children to college a \$10,000 deductible on their income taxes every year.

"It's a good investment -- not only in your future but in America's future," said the first lady.

Clinton came to SEHS at the request of the school's student council, and spoke for approximately 45 minutes. After speaking she slowly made her way around the front of the stage, shaking hands with anyone who could push a hand through the thick crowd.

"Education is the key not only for us, but *us* as a nation," Clinton added.



## Childcare

- Safe, Home Setting
- High Quality Childcare
- Experienced Preschool & Credentialed Elementary Teacher
- Developmental Education
- 1 - 6 Ratio!
- State Registered

**Enroll Now! Call Nancy at 343-2458**

Applications are now being accepted for the

**1996-97**

## Denali Editor

The editor of Denali selects and manages the magazine staff, organizes the production, and has the final word concerning the magazine according to Media Commission guidelines. A background in desktop publishing, literature and/or art is recommended. She/he can expect to work at least 20 hours per week. The editor must be an officially registered LCC student and must maintain a 2.00 GPA. The Denali editor will be paid a stipend of \$500 per term.

Application packets will be available on Tuesday, Sept. 24 and can be obtained from Dorothy Wearne, 205D Center Building. The deadline for returning applications is Wednesday, Oct. 8. The Media Commission will meet on Friday Oct. 10 to interview applicants and select the new editor.

**Life without IBM computers can lead to Disco House Cleaning.**

Clean-up with a **CD PACKAGE** of the hottest **SOFTWARE** titles.

Call **1 800-4IBM-LOAN** for **Special** student, faculty and staff financing.

**See campus computer store for details.**

Buy an IBM PC 340 or 350 desktop computer and an IBM Multimedia Kit. And you'll get a CD software package that includes Windows 95, Lotus SmartSuite, Netscape Navigator, World Book Multimedia Encyclopedia and the Infopedia collection of essential

reference software. Buy a ThinkPad and you'll get Windows 95 and Lotus SmartSuite. You can also take advantage of special student, faculty and staff financing. Just call 1-800-4IBM-LOAN for information. Hurry, visit your campus computer store today. After all, no one looks good in a checkered apron.

**IBM**

IBM and ThinkPad are registered trademarks of International Business Machines Corporation. Windows is a registered trademark of Microsoft Corporation. Other company, product or service names may be trademarks or service marks of others. ©1996 IBM Corp. All rights reserved.

**TO HELP**

**Campus Ministry**

Center Bldg. 242  
747-4501 Ext. 2814



## THE NEWSDAY CROSSWORD

Edited by Stanley Newman  
NOVEL LANGUAGE: Words derived from the world of fiction  
by Fred Piscop

### ACROSS

- 1 Antoine Domino
- 5 Train-schedule datum
- 9 Coup
- 14 Seller's stipulation
- 18 Soil, in combinations
- 19 Eye part
- 20 Leading lady Massey
- 21 Irascible
- 23 Word coined by James Hilton
- 25 Word coined by Milton
- 27 Mexicali munchies
- 28 Russian sleigh
- 30 *Glass Menagerie* role
- 31 Caterpillar creations
- 33 Radius neighbor
- 34 Agitated state
- 35 Pine product
- 38 Churchill successor
- 40 Soft sound
- 44 Draft animals
- 45 DOS command
- 46 Pie location, perhaps
- 47 Trig term
- 48 Standees' grips
- 50 Word derived from Rabelais
- 54 Duffer's concern
- 55 Before
- 56 Berth place
- 58 Geometry calculations
- 59 *Shrugged*
- 61 Godliness
- 63 Legal process
- 64 Of the Carthaginians
- 65 Takes out
- 66 Photography name
- 67 Outfit
- 68 Small change
- 69 Marriage announcement
- 70 Seclusion
- 73 99 Down's quarry

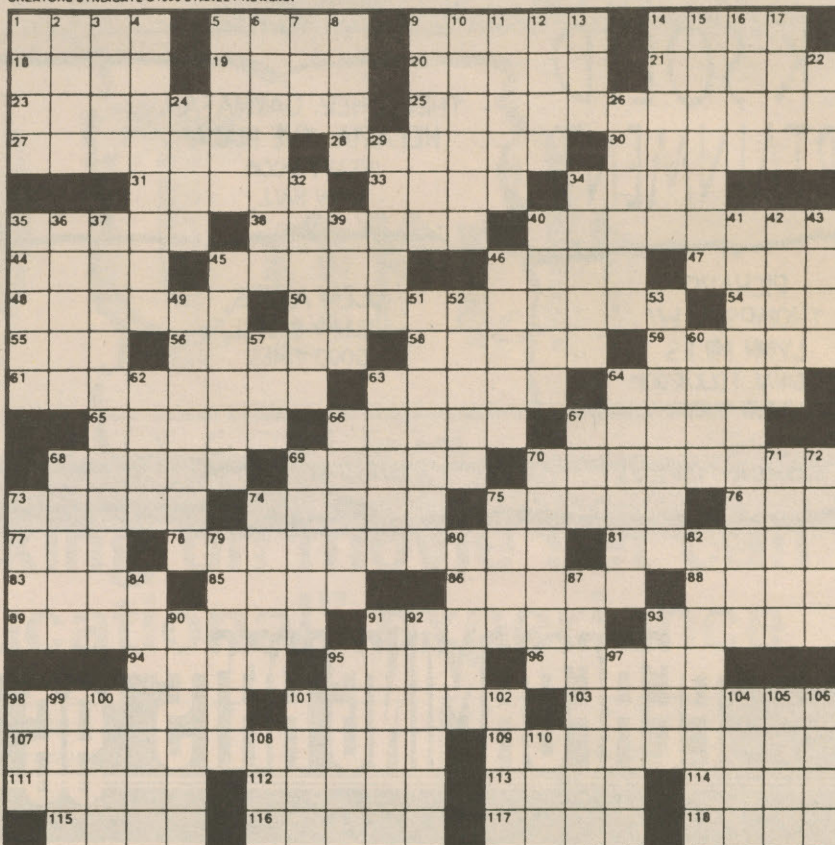
### DOWN

- 74 Piano opposite
- 75 Computer language
- 76 Williams or Turner
- 77 College, to an Aussie
- 78 Word derived from Homer
- 81 Comedic talent
- 83 'acte
- 85 Printmaker of note
- 86 Brooklyn-based group
- 88 Move carefully
- 89 Newborns' outfits
- 91 *Forbidden* ('56 film)
- 93 Odense people
- 94 Comic Bert
- 95 Moplike do
- 96 22-card deck
- 98 "More!"
- 101 Brings disgrace to
- 103 London lawmen
- 107 Word derived from Richard Sheridan
- 109 Word coined by Eleanor Porter
- 111 Site of many Goyas
- 112 "Gay" city
- 113 Hurler Hershiser
- 114 Ford models
- 115 Sporelike cell
- 116 Dummy on the radio
- 117 Mrs. Dick Tracy
- 118 Standings-column entry

### 8 Test for H.S. jrs.

- 9 Kind of antenna
- 10 *Seinfeld* character
- 11 Toy-truck maker
- 12 Forever day
- 13 kwon do
- 14 Minute
- 15 Some houses
- 16 "The doctor"
- 17 Card game
- 22 Singer Sumac
- 24 Scottish valley
- 26 Type of paper
- 29 School-supply item
- 32 Theatrical
- 34 Alone, in theater
- 35 Bed contents
- 36 Newsboy's shout
- 37 Word derived from Horace Walpole
- 39 Godunov, e.g.
- 40 Like some signs
- 41 Word coined by Jonathan Swift
- 42 UNIVAC I predecessor
- 43 Pro shop purchases
- 45 Makes out
- 46 Quarterback play
- 49 Pro shop purchases
- 51 Mason creator
- 52 Peace Nobel
- 53 Octopi relatives
- 57 Carat divs.
- 60 Bolt holder
- 62 Tagged (along)
- 63 Scout's rider
- 64 Jai-alai ball
- 66 Recreational vehicles
- 67 Seaman
- 68 Secretary Shalala
- 69 Dice, so to speak

CREATORS SYNDICATE ©1996 STANLEY NEWMAN



National Student News Service, 1996

- 70 "On First Looking into Chapman's Homer," e.g.
- 71 Thickheaded
- 72 Beats by a nose
- 73 Where each second is important
- 74 Peggy Lee song
- 75 City near Le Havre
- 79 Donator of a sort
- 80 Public figure's concern

- 82 Knucklehead
- 84 Puts in another clip
- 87 Mews stalls
- 90 Pitch container
- 91 *Star Trek* weapon
- 92 Skedaddled
- 93 First black American Leaguer
- 95 Tolkien setting
- 97 Upscale auto
- 98 Rom. ruler

- 99 DEA agent
- 100 Polk's opponent in 1844
- 101 Extend across
- 102 Dick and Jane's dog
- 104 Toward
- 105 Goes no further
- 106 Talk fresh to
- 108 Co- (converted apartments)
- 110 Norwegian coin

## History taken orally

Joel Lloyd  
for the Torch

Two Social Science instructors wonder if there might be other LCC community members who share their interest in oral history. Specifically, gathering oral histories from Lane County residents.

"It would be purely voluntary. We want to see if this idea could develop," says history instructor George Alvergue who proposed an oral history project last year, enlisting the support of instructor Jody Shuanek.

Alvergue says an on-going effort would allow staff and students to conduct interviews and gather data about events or ideas relevant to the Lane County area.

Suhanek gained experience with oral history tech-

niques as a graduate student, collecting information about the early African-American community in Eugene. She has also interviewed Oregon residents about the Depression era.

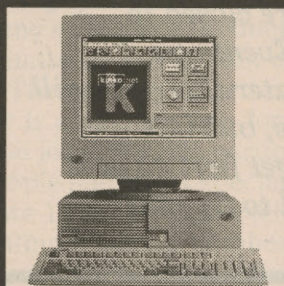
"If we had enough interested people, we'd have to establish a format, develop questions to ask. There's a protocol to follow in oral history interviews," says Suhanek.

"When you get all this information, it has to be accessible to people," she says. "Getting it transcribed, or in a video library — that's the hard part."

There would be costs involved, she admits. The project would require supervisory time and recording equipment.

Alvergue's extension is 2433, and Shuanek is at 2431.

## Self-Serve Computer Work Stations



- ▼ IBM and Mac
- ▼ Premiere Software
- ▼ Scanning
- ▼ Color and Black & White Laser Printing

Open 24 hours, 7 days a week

**kinko's**

1265 Willamette Street  
344-3555 / 344-0870

Located Inside



**StarMart**

I-5 and 30th Ave.

**SUBWAY**

The Place Where Fresh is the Taste.®

Join us for breakfast, lunch or dinner

## Help Wanted

### Student Ambassadors

To represent Lane in the high schools, to the general public and our local business community, & to organize campus tours

If you...

- will be a returning student 1996-97
- are comfortable with meeting new people
- are positive about your experience at Lane
- are willing to work 10-12 hrs/week (flexible)
- can commit from September '96 to June '97

...pick up an application packet at the Admissions Office or call Luci Amabisca at 747-4501 ext. 2688

Deadline: October 18, 1996

**LANE**  
COMMUNITY  
COLLEGE

An affirmative action/equal opportunity institution

## Pheasant Park Apartments

Now renting and taking applications!!

1 Bedroom \$390 - 400

2 Bedrooms \$475 - 539

3 Bedrooms \$540 and up

**747-5411**

Call now for more information or stop by at

475 Lindale N, Springfield

- Beautifully landscaped grounds
- Laundry facilities
- Playground
- Tanning Salon
- New Fitness Room and more.....

Please recycle this newspaper



