

◀ Are you on the honor roll?
— see pages 6, 7 and 8

▶ Students speak out
— see page 3



Volume XXXVI Number 26

THE TORCH

Thursday, May 23, 2002

TAKE BACK THE NIGHT



Photos by Kira Davis



During the May 16 Take Back the Night march and rally against violence toward women, participants proudly flaunted t-shirt slogans such as PRIDE, SAFETY and WOMAN (lower right). Other participants carried signs as they paraded down West 11th with the peaceful crowd. One sign read: NO MORE DATE RAPE.

Two students (left) pass the "safety flame" at the rally at the UO EMU amphitheater. Both women and men joined together to listen to speakers, to march and unite: "Every woman has a right to be safe ... Every person has the right to be safe."

Political cheer leaders (above right) lead the crowd in chants such as, "Women united, will never be divided," and "Racist, sexist, anti-gay, you can't take our streets away."



Rally will educate students on racial profiling

Björn Storck
for The Torch

What is "racial profiling"?

Racial profiling occurs when the police target someone for investigation solely on the basis of the person's skin color, national origin, or ethnicity.

At noon on Thursday, May 23, the Black Student Union will hold a rally and discussion at Bristow Square on the topic of racial profiling, titled "Know Your Rights."

The event is held "to raise awareness about civil rights for people (and) to gain a better understanding of how to interact with the police," says Gregory Dunkin, BSU spokesperson and newly elected ASLCC president for 2002-2003.

The event will include a

keynote speaker, Sen. Vicki Walker, who will shape focus on the event. Then Eugene police officers will review the dos and don'ts for when citizens interact with the police. They will also inform students how to file a formal complaint in case of unjust targeting (racial profiling).

The American Civil Liberties Union will discuss the loss of student rights due to the US Patriot Act. It will attend the event to spread awareness of student rights since the Patriot Act was passed on Oct. 26, 2001, says Terri Riggins of the BSU.

Barbara Delansky, Student Life and Leadership Development director, will explain the campus complaint process in the case of racial profiling.

Commission chooses Torch editor for 2002-2003

Skye MacIvor
Editor in Chief

LCC's Media Commission — a group of 16 faculty, staff and student representatives — named Sarah Ross as Torch editor in chief on May 16.

Derek Olson, a first-year journalism student from North Dakota and Torch managing editor, also competed for the position.

The Denali editor position remains open; the commission will consider further applicants in fall 2002.

"I'm really excited," says Ross, who served as Torch news editor this year. "I know it's going to be a lot of work, but I'm looking forward to the opportunity to provide leadership at the paper and continue developing my journalistic



Sarah Ross

skills."

Ross, 38-years-old, entered LCC in fall 2001 to consider a career change and study journalism. In 1996, she earned her bachelor's of science degree in computer science from the UO.

This year, in addition to her work at The Torch, she helped Marcola High School start a small student newspaper, and organized a journalism workshop at a recent conference called Options, which introduced middle school girls to non-traditional professions — careers employing less than 25 percent of women.

"[I know] how well she works with students," says Ann Green, Torch staff writer and media commission member. Green appreciates Ross's sense of humor, and says Ross listens to students and knows

how to motivate them.

"I think she will do a really good job. She knows when to ask for help and when to look outside for solutions. She's aware."

Ross realizes her term as editor will include challenges.

"Recruiting and retaining staff people is always a challenge at a student paper," she says.

And she knows "working without long-time Torch advisers Pete Peterson, (retiring news and editorial adviser), and Jan Brown, (retiring advertising adviser)," will also be a difficult transition.

Another challenge will be dealing with The Torch's changed budget. During the LCC Board of Education's budget cutting process in February, the college reduced The Torch budget by 54 percent.

see EDITOR on page 5

THE TORCH Staff

Editors —

- editor in chief
Skye MacIvor
- news editor
Sarah Ross
- managing editor
Derek Olson
- production manager
Shannon Browning
- assist. production manager
Jen Drake
- photo editor
Taylor Castle
- lead photographer
Richard Archambault
- sports editor
Laura Martyn
- a & e editor
Tate Woniya
- assistant a & e editor
Valerie Link
- ad specialist
Priscilla Anderson
- copy editor
Shawn Falleur
Peggy Morgan

Staff —

- lead reporter
Melissa Vandever
- staff writers
Ann Green
Daniel Bartzen
Pat Sweeney
Graham Coslett
- columnists
L.A. Birch
John Mackwood
Gus Wider
- photographers
Collin Andrew
Kira Davis
Naomi Reichman
- darkroom tech
Tomoko Matsumaru
- production staff
Anne Geertsens
Mike Ronne
- graphic artists
Peet Baldwin
Hanif Panni
- distribution manager
Garth Rydstedt
- distribution assistant
John Mackwood

Advisers —

- production adviser
Dorothy Wearne
- advertising adviser
Jan Brown
- news & editorial adviser
Pete Peterson

The Torch, the official student-managed newspaper of Lane Community College, is published every Thursday.

Letters to the editor should be limited to 250 words and include the author's name, phone number and address (address and phone number are for verification purposes only and are not for publication.) Commentaries should be limited to 750 words and should also include the author's name, phone number and address. Deadline for the following issue is Monday, 5 p.m. The editor in chief reserves the right to edit letters and commentaries for length, grammar, spelling, libel, invasion of privacy and appropriate language.

Mail all correspondence to: The LCC Torch, IT 218, 4000 E. 30th Ave. Eugene, OR 97405.

e-mail: torch@lanec.edu

Phone us at:
Editor in chief: 463-5657
Newsroom: 463-5881
Production: 463-5109
Advertising: 463-5654

LCC refuses too-good-to-be-true Musemeci 'gift'

Amid the confusion and pressure of the college's budget cutting process last February, Arlie and Company, a property development business headed by John Musemeci, made a sugar-coated offer, which at first taste may have seemed appealing for LCC's financial administrators.

But the LCC Board of Education and administration practiced responsible stewardship and refused the 'gift.'

Musemeci proposed to buy LCC's 100 acre Jay Marston Forest. And to help LCC with its financial difficulties by giving the LCC Foundation \$500,000, upgrading the sewer system for \$1,320,000, and leasing — at no cost — 20 acres he owns adjacent to campus to the college for 99 years.

The deal seems sweet, but is sour.

LCC's Marston Forest is a valuable educational resource. The donation to the LCC Foundation would be a one-time offer that would not solve long-term funding problems. The sewer upgrade is already paid through a 1995 voter-approved bond measure (the money cannot be used to fund programs). And the 20 acres Musemeci offers on lease do not meet the college's needs.

In 1996, McDougal Brothers Inc., also approached LCC with a land swap request, and the college refused the McDougal

offer. Ironically, the McDougal's 20 acre parcel adjacent to the college, offered, in the 1996 proposal is now owned by Musemeci and friends, and is the same parcel Musemeci wished to lease to the college in 2002.

What is it about LCC's 100 acres that makes real estate speculators drool?

For one thing, it's five times as much land as the 20 acre parcel both companies tried to entice LCC into accepting. For another, the Marston Forest is a 'diverse tract of land with numerous natural habitat types,' according to a Feb. 8, 1996 LCC Science Department letter to former LCC President Jerry Moskus.

The former McDougal and current Arlie property has been 'logged for the commercial value of its Douglas Fir,' the letter stated.

LCC's unique forest should be preserved in its current diverse state. If a land development company like McDougal Brothers Inc. or Arlie Company owned Marston Forest, it might cash-in on the economic value of the timber, destroy a valuable ecosystem.

The LCC Science Department also wrote, '(T)he LCC forest consists of at least four distinct botanical elements, including a stand of native Ponderosa Pine, a maturing Douglas Fir stand now developing attributes of an old growth forest, several

hardwood stands, and grassland areas. ... (T)he habitat diversity is much greater than the McDougal property proposed for exchange.'

But Musemeci wrote a May 7 letter about the real estate proposal to Mary Spilde which states, '(W)hen we offered as part of our gift, to purchase land from the college, we thought it was unused, surplus land. We did not know that students in your science department use the land. Our purchase offer was intended to convert unused property into cash that the college desperately needed. We intended to dedicate the parcel as park and had no development plans for it.'

But intentions are not always reality. And in the future, other land development companies may covet LCC's prime 100 acre parcel. What other reason than development would tempt a company to buy LCC's land? If I understand the purpose of the land speculation business correctly, real estate developers purchase land they intend to hold for financial gain, not to preserve as park land.

I admire the board's courage, caution and sound judgment in refusing to relinquish a valuable community resource. The board acted as wise stewards of LCC's resources.

The college should continue to allow the Marston Forest to grow into a diverse system, valuable for scientific research.

But Lane also set a greater precedent, that of acting in the best interest of the public by preserving the environmental integrity of its priceless forest.

Commentary



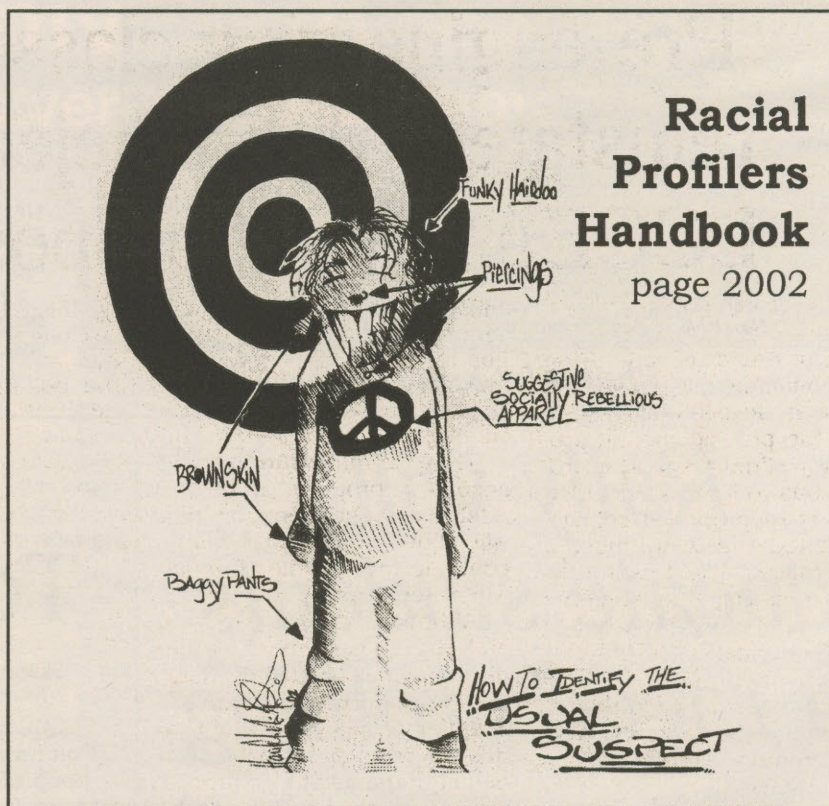
Skye MacIvor
Editor in Chief

Letter to the Editor

Outraged at campus thief

This letter is to the person or persons who are breaking into cars and stealing from others on the main campus. On May 14, you (and your thugs) stooped to a new low. Don't you have anything better to do than to scope out cars and the bike racks to take something that is not yours? That's right. You stole my bicycle seat and stem for my bike. Not only that, but I have to now remove it every day and carry it to my office because you do not have the willingness to get a job. What's even worse is that you may have done it just for kicks, and have tossed the seat into some bushes. What a waste! I have been working and leaving my bicycle here without a problem for 10 years. Now I can't even do that. I hope you are happy. I still trust people. Unfortunately, there is now one less person I can trust: YOU!

Christopher Hainley, Sr.
LCC Staff



Mackworld



John Mackwood
Columnist

Going to jail and taking a lot of money out of your bank is no joke at all. Let's get down to business. There is a lot of work to do, maybe some studying. It may take all day long, and there's class to go to.

Chow down. Cook some pork and beans in French salad dressing mix; it's a very good lunch or dinner. I'd like to go to a French restaurant and have some coffee or tea.

Be flexible. I imagine that I'm already on my way to France: Hello, romance world. I'll go out

on a lunch date, speak French and have a romantic kiss.

The Work Force Network building will open on Monday, June 17, 2002. We need to let people know ahead of time. Next fall school starts up again at Lane Community College on Monday, September 23, 2002.

I'll go to the lobby and buy some popcorn and pop. I'll watch an enjoyable new movie and be quiet when the movie begins.

I concentrate on writing a lot. If I keep it up, sooner or later I'll pass the writing test. I'm on the

way to getting my GED very fast.

The Gateway Mall go-carts are back for this summer. They're a very good driver's test.

A pen cannot walk or fly out of the classroom.

I'm going to fix my tape set, and take a big fan into the bathroom to make wind sound effects. It will rain down very hard and long on the tape set in the bathroom. I'll eat potato chips, candy bars and pop to make sound effects. I'll play music on my piano while the big fan makes a wind noise for sound effects.

Event fosters discussion about Israeli-Palestinian conflict

Student José Soto organized the educational forum.

Sarah Ross
News Editor

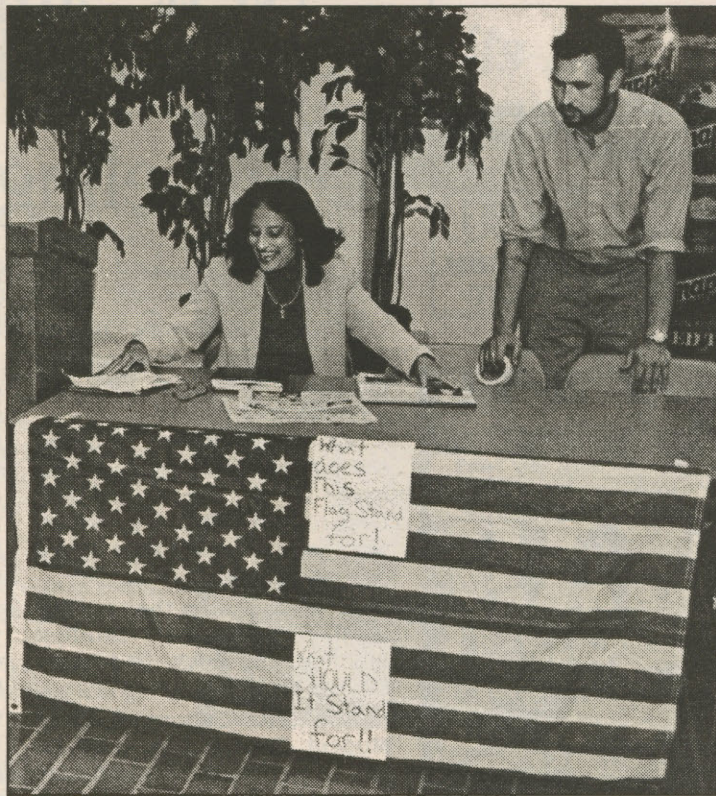
An American flag hangs from the front edge of a table in LCC's cafeteria. A small sign next to it asks, "What does this flag stand for?" Hourieh Khalil, an LCC student from Jordan, stands behind a podium near the table. She speaks in a quiet, emotion-filled voice amplified by a microphone.

"Suicide bombers are people that have been oppressed for so long their only solution is to blow-up themselves," she says, trying to explain the frustration felt by Palestinians living in refugee camps on Israel's West Bank.

"The Israelis have tanks and Apache helicopters and the Americans are behind them."

She asks those listening how the Palestinian people are supposed to survive when they can't even get to work to feed their families because they are stopped, harassed and turned back by Israeli soldiers at checkpoints.

Khalil, who considers herself a Palestinian Arab like her grandparents, was expressing her views on the Middle



Nadia Sindi, born in Saudi Arabia and now living in Eugene, and LCC student José Soto talk between speakers at a Middle East speak-out held in the LCC cafeteria on May 15.

East conflict at an open mic forum held Wednesday, May 15 from noon to 1 p.m. in the south end of the LCC cafeteria.

The forum was organized by LCC student José Soto. Last April, in an effort to get students talking about the U.S. role in the conflict, Soto hung a ten-foot high banner in the lobby of the Students

Services Building asking, "What is the Israeli government doing?" He says this forum was intended to be an outlet for students' responses to that banner.

He invited speakers from Eugene's Middle East Peace group, the City of Eugene Human Rights Commission and any student who felt the need to say something.

And say something they did. Self-proclaimed Zionists, Palestinian Arabs, native Israelis and LCC students learning about the conflict in their classes voiced a broad range of views.

But most agreed on one thing: The violence must stop.

Jasper Pruitt, an LCC transfer student, says he stumbled across the event on his way to class and stopped to speak out because, "I feel that there are human rights abuses being committed against the Palestinians every day, and that's hidden by the way the news is reported."

"The U.S. is what allows Israel to commit human rights abuses by blocking United Nations (protests) condemning Israeli actions."

Pruitt said he first became interested in the Middle East conflict last year when his sociology instructor at Southwestern Community College began talking about the issue in class.

On
Saturday, June 9,
Eugene's Middle East Peace Group invites you to take part in a
"Refuse to be Enemies"
celebration at the
Hilyard Community Center
from 4-8 p.m.
The community center is located at
2580 Hilyard Street.
Highlights include lots of middle
eastern food, music, and speakers.
A \$5 - \$25 donation will be
accepted at the door.
All proceeds will go to support
Israeli peace groups.

Folded print-outs of LCC policies concerning freedom of speech and racial or ethnic harassment sit on tables near the speakers podium.

Behind the speakers, two television sets played video tapes of recent Al-Jazeera news broadcasts. Al-Jazeera's satellite broadcasts from Qatar, a small country on the eastern edge of the Saudi Arabian Peninsula, are the only independent Arab media available in the Middle East.

The tapes showed interviews with British and European leaders condemning the violence in the Mid-East and voicing views not often heard in mainstream American media.

They also showed endless clips of

see FORUM on page 4

Pre-engineering classes reinstated, Board rejects LCCEA budget proposal

Sarah Ross
News Editor

LCC's Board of Education voted unanimously to reverse its March decision to recommend the pre-engineering program for elimination. The program was originally included on a list of proposed college-wide budget cuts to meet a \$7.25 million deficit next year.

But at its May 8 meeting the board approved a proposal to use a combination of industry support, tuition-based sections, and general fund money to continue the program, says Kyle Hammon, Interim Science Division chair.

Still on the block

Other programs did not fare as well. The board rejected program generated proposals to save the Chemical Dependency Counselor Training program, the Law Enforcement Reserve Academy, Broadcasting/Visual Design and Production, and cuts to instruction in the physical sciences. Although Steve John, Interim Vice President for Instruction said a new tuition-based support model being tried this summer may generate revenue to save the physical science classes.

Tuition-based sections are paid for directly by the tuition from the students enrolled in that class. Students won't be able to tell the difference between tuition-based classes

and those paid for out of the general fund, explains John. But he says the new funding mechanism allows the college to serve more students with a smaller pot of money.

The administration did accept a proposal from the Adult High School program that will allow current students to continue their studies through winter term 2003.

Although several students and staff including Patti Lake, division chair of Adult Basic and Secondary Education, and Jennifer Gainer, ASLCC president, spoke passionately on behalf of the adult high school, there was no support on the board for a motion to reconsider its elimination.

LCCEA proposal

The administration and faculty union continued to disagree over the administration's budget projection figures and the need for cuts to instructional programs.

The administration rejected an LCCEA proposal to split the cost of hiring an outside party to analyze the college's budget projections.

LCC President Mary Spilde said the administration has met with union representatives three times to "clarify" the LCCEA proposal and to provide information requested by the union.

But Spilde said, "(The

administration) is not planning to change any of our recommendations, nor are we asking (the board) to change any of the decisions (it has) made."

Dennis Gilbert, LCCEA bargaining team chair, said, "The union acknowledges there are financial problems, but seeking community support can address these issues."

"Our concern is that some cuts are irreversible. Our aim is to show that in the short-term there is the money available to keep instructional programs."

More to come...

Spilde told the board that when it comes to state funding "the word that prevails is 'uncertainty.'"

Spilde said the college may face an additional two percent reduction in state funds for next year.

Strategic Learning Initiative

In an annual report on the college's Strategic Learning Initiative, a group of close to 15 faculty and students shared their experiences in LCC's Learning Communities and Service Learning classes with the board.

SLI is a faculty-led effort to create innovative learning experiences for students at LCC. The speakers emphasized the importance of both programs to the quality of education at Lane.

TIGHTWAD TUESDAY

at the

LCC Bookstore

20% Off High Sierra
Backpacks

20% Off General Books
(excluding textbooks)

Prices good on Tuesday May 28th Limited to stock on hand

Join us for lunch or dinner

Located
inside

Star
Mart

Hot Dogs - 2 for 99¢

SUBWAY

I-5 and 30th Avenue

ATM & MONEY ORDERS available

High Priestess Piercing

www.highpriestesspiercing.com

Monthly specials & discounts

Safe & professional procedures

Experienced male & female piercers

Hospital sterilization methods

24 hour emergency services

Largest selection of top-quality
body jewelry

Natural jewelry from Bali

675 Lincoln Eugene

541-342-6585

1425 Monroe Corvallis

541-738-7711

A little off the top.
A lot left in the wallet.



Still the Best. Still just ...

\$12⁰⁰

Trendy and professional haircuts by friendly haircare specialists.

Call Ahead Service is available.

Eugene
WILLAMETTE SQUARE
2526 Willamette Ave.
683-1405

Springfield
MOHAWK MARKETPLACE
1944 Marcola Drive
741-2887

Open 7 days a week; Mon-Sat 9am - 7pm • Sun 11am - 4pm

SUPERCUTS
As hip as you want to be.

Macintosh Repair

design TECH

736-1500
Student & Teacher Discounts!
www.dtmac.com

BIJOU
492 E 13th 686-2458
For the week of Friday, May 24th!!
Find the NEW Bijou Movie Guide next Thursday in Eugene Weekly!

Y TU MAMA TAMBIEN
Nightly 5:15, 7:20 & 9:25pm NR
Sat & Sun Mat 3:10pm (subtitles)

Italian For Beginners
Nightly 7:00pm--Sun Mat 3:00pm

THE ENDURANCE
Shackleton's Legendary Antarctic Expedition
Nightly 5:00pm

Monsoon Wedding
Nightly 9:05pm -- Sat Mat 2:40pm
NEXT: DOGTOWN AND Z-BOYS

New, automated system streamlines counseling check-in

Rebecca Jones
for The Torch

Students no longer need to fill out forms to see an advisor or counselor; instead, they simply click on a mouse.

An automated student check-in system, implemented April 18 in the Counseling Department, reduces paperwork, streamlines check-in and organizes data.

"It's a lot easier than waiting in line," says LCC Student Amanda Fitzpatrick. "It takes a lot less time."

And boxes upon boxes of student check-in forms are no longer a concern for earth-wise students and staff since the new system eliminates the need for reams of full-page triplicate forms.

Upon entering the counseling office, a student now uses one of four computers to check in, chooses the type of preferred counseling or career advising, views the counselors' drop-in hours and selects the name of an available advisor or counselor.

A cue then appears on the counselor's office computer screen, indicating that a student is waiting. With just a

command on the keyboard the counselor can bring up the student's records.

One of the biggest benefits of the new system is the elimination of all the "back and forth" travels staff members would undertake during the day, says counselor Douglas Smyth, the four-year veteran of LCC's department who initiated the project.

"To keep up with service, you'd really have to get up every two minutes, walk out there and see if there was a student waiting for you, and that's not a very efficient way," he said of the old system.

The department's computerization committee worked on the concept, then contracted a local software writing company, operated by LCC software development instructor Mari Good, to write the program.

In addition to the new check-in system, the program features a data system that stores information by student name and category.

Smyth adds that every bit of information is sorted, filed and stored, eliminating hundreds of extra hours required of a limited clerical staff.

Are your weekends missing something?

Join us each Sunday evening at 6:30 p.m. in the sanctuary for an informal Service of Holy Communion featuring a variety of musical and liturgical styles.



Central Lutheran Church

1857 Potter St. (corner of 18th and Potter)
Eugene, Oregon 97403

www.welcometocentral.org

All are welcome!

(541) 345-0395

Earn your degree *at night* from Northwest Christian College



Bachelor of Science in Computer Information Systems

Classes meet one evening a week, and one Saturday per course for 24 months.

Financial Aid is available.

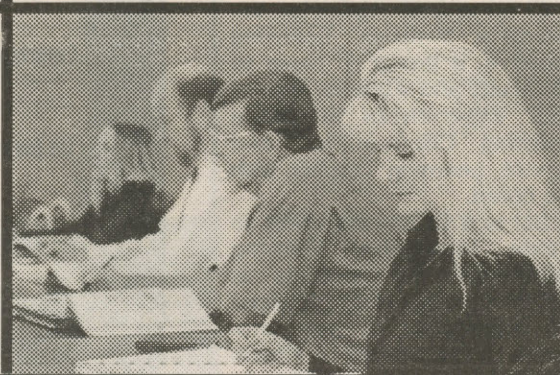
Bachelor of Arts in Management

Classes meet one evening a week, and some Saturday mornings for 18 months

For more information please contact:

Heather Allison, Admissions Coordinator
(541) 684-7247 ♦ heather@nwcc.edu

www.nwcc.edu



FORUM continued from page 3

rock-throwing Palestinians, confrontations between Israeli soldiers and Palestinian civilians, and the frantic efforts of ambulance attendants and emergency room physicians to repair bloodied, broken bodies on stretchers and gurneys being rushed into Israeli and Palestinian hospitals.

On the table next to the speakers podium was a photo album with pictures of Palestinian youths playing and living in rubble strewn streets, running from Israeli tanks, and throwing rocks at soldiers.

Next to the album were stacks of wallet-sized cards listing the rights of civilians who are stopped by the police in America. The cards, which are compiled by the ACLU, were printed and distributed at the event by LCC's Black Student Union.

The heads of Israeli, Palestinian and other Arab students nod in unison as ASLCC Treasurer Brett Force spoke his mind.

"Extremists on both sides need to be removed from power — if not, this violence will never end," Force says he is talking about terrorist groups but is also referring to Palestinian leader Yassar Arafat and Israeli Prime Minister Ariel Sharon.

Robin Souma, an LCC Broadcast and Visual Design major, sat at a table listening

to the speakers and watching the TVs.

"It horrifies me — what's going on. They're out of control."

"Do we wait for Arafat and Sharon to die? How do we get them out of office?" she asks, an urgent frustration filling her words. "It just makes your heart weep for humanity."

Abdullah Al-Hemyare, from Yemen on the south coast of the Saudi Arabian Peninsula and living in Eugene since 1986, is a member of the Middle East Peace group.

"There is hope if people learn to get along and share that piece of land," he says. "I support the idea of two states side-by-side. Enough is enough."

Al-Hemyare says he would like to see the U.S. government get more involved in the peace process and encourages American citizens to support peace groups in Israel.

"It's not a religious war, it's a land war," he insists.

"Islam and Judaism ... have so much in common. They both descend from Abraham ... they both believe in one God and the ten commandments."

He says, "There are extremists on both sides — some Palestinians want more (land) than the 1967 (boundaries), and some Jews don't want any (Palestinian) state. We have to be realistic."

EDITOR from page 1

But last week students approved four new ASLCC ballot measures, including a request from The Torch to increase the Mandatory Student Activity Fee by \$1.75 per term. This is a new funding source, and "figuring out what the impact is going to be and still providing a quality product" is a puzzle Ross must solve.

But she says the first challenge is to recruit her core staff. "I would like to get regular student columnists sharing their different voices and opinions."

Ross's other goals for 2002-2003 include special sections each term "on local or even international issues that are important to students."

For fall term, she says one possible special section is a voter's guide for the November 2002 elections. She says the guide would examine candidates and ballot measures from the students' and college's per-

spectives.

Also, the repercussions from the war in Afghanistan and the Middle East conflict are issues Ross says may affect the college. "We'd like to keep in touch with those issues," she says.

She says she would like the student staff to investigate "what the college (will) look like and how students respond to programs cut and reduced."

And she says she will cover "student government and the variety of student groups that sponsor events and activities for the student body."

The Torch is a student-run, independent newspaper. The editorial board makes all decisions about content and news policy.

Ross would like to provide a "relevant and worthwhile hands-on learning experience for the students who work at the paper."

Are you nosey?

Chatty?

Resourceful?

Expressive?

OPINIONATED?

You belong on

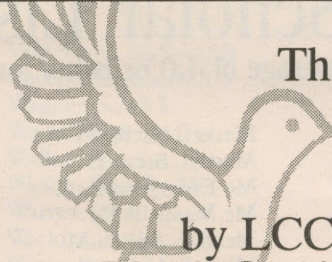
THE TORCH staff.

Come meet your people and find out how your natural abilities can become the raw material for a career in journalism.

We are now accepting applications for the 2002-2003 staff, including:

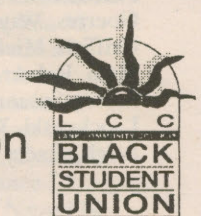
- Reporters
- Photographers
- Copy Editors
- Cartoonists
- Sports writers
- Designers
- Columnists
- Graphic artists

For more information stop into The Torch Office, Room 218, Building 18, or give us a call at: 463-5657.



This moment of peace
is brought to you

by LCC's
Black Student Union




For more info: call Ms. Leslie
at 463-5043

ALL YOU CAN EAT
SPAGHETTI
& garlic bread
\$3.25

Every Tuesday
PIZZA PETE'S

2506 Willakenzie 341-0998
2673 Willamette 484-0996



CASH FOR BOOKS

No matter WHERE you bought
them, we'll **BUY THEM BACK!**

Lane Community College Bookstore

MARK YOUR CALENDAR
FOR THESE DATES
AND TIMES

Monday
JUNE
10th thru

Saturday
JUNE
15th

Mon-Thur, June 10-13.....8:00 am to 7:00 pm
Friday, June 14.....9:00 am to 4:00 pm
Saturday, June 15.....9:00 am to 1:00 pm

10% OFF ALMOST EVERYTHING SALE



**It's more than
a degree.
It's your future.**

Without a good degree, you could be faced with one dead-end job after another. But with a Linfield degree, there'll be no stopping you. Linfield is rated the top undergraduate college in the western region by *U.S. News & World Report*. With classes available in Eugene or online, you can earn a Bachelor's on your schedule and within your budget. Summer classes begin June 8. So enroll in the Linfield Adult Degree Program and start a better future today. Call Li A-Reynolds at (541) 345-5476 or our Division of Continuing Education at 800-452-4176. Or visit our website at linfield.edu/dce.

Linfield Adult Degree Program
Let our reputation boost yours.



President's Scholar List ~ Winter 2002

The following students have earned a Grade Point Average of 4.0 or better for 12 graded credit hours over three consecutive terms.

Ali, Katherine L
Andrus, Aaron S
Baker, David C
Baumgardner, Jonathan E
Bertrand, Danelle L
Callahan, Cori A
Empey, Acacia D

Foster, Cynthia A
Goerres, Wayne L
Griffith, Michael D
Harp, Robert E
Kaiser, Susanne W
Lapchynski, Walter
Leigh, Tracey

Markel, Michael J
Martell, Brent D
Mc Evoy, Jennifer E
Mc Manis, R Ed
Meador, Angela M
Micheli, Joshua P
Miller, Travis L

Morse, Jedidiah N
Rhoads, Angela J
Rios, Sierra L
Sartorius, Eva D
Schneider, Kristine R
Singh, Hariom
Spain, Frederick K

Sparks, John M
Taff, Debra K
Thomas, Alan W
Vincent, Elizabeth A
Watts, Sarah A
Wertz, John A

President's List ~ Winter 2002

The following students have earned a Grade Point Average of 4.0 or better for 12 graded credit hours.

Aaron, Karlene R
Abbott, Elizabeth W
Abdelhamid, Faten
Abdullah, Tahir
Aburashed, Turki
Adkins, Karen L
Al Samani, Julie L
Al-Ahmadi, Rami
Al-Awfi, Majed
Al-Jedani, Turki
Al-Shamrani, Mohamad
Alford, Eva C
Ali, Katherine L
Allen, Michael S
Alley, Cheri L
Anderson, Michael D
Andrus, Aaron S
Andrus, Benjamin J
Antone, Lindsey E
Apicella, Michele A
Armstrong, Jon T
Arnold, Jacob S
Arnold, Penny A
Arthur, Sandy L
Asa, Brian T
Aune, Emily R
Backman, Brian E
Bailey, Adam R
Baker, David C
Baker, Elaine H
Banks, Heath P
Barba, Mandy A
Bard, Charles E
Barranti, Margo L
Baskett, Michelle K
Bassett, Bonnie A
Bastian, Ken A
Bauer, Colleen A
Baumgardner, Jonathan E
Beaudro, Stormy L
Beckett, Margaret A
Beier, Craig N
Bell, Molly
Bennett, Bethany
Berrang, Heather L
Bertrand, Danelle L
Bichel, Lila
Bilyeu, Leah
Bissell, Douglas A
Blidi, Kipi A
Bloeser, Robert J
Boggs, Jessica D
Bohe, Michael E
Bond, Amy J
Boost, Rachel M
Bowhan, John M
Boyd, Sarah M
Brandt, Sean L
Bray, Michael J
Brokaw, Julie A
Burks, Lauren D
Burns, Dianne
Busch, Melissa L
Bussen, Tara L
Cady, James D
Calhoun, Tina M
Callahan, Cori A
Callister, Kate M
Cameron, Sandy L
Cannoy, Noah
Cantwell, Marcia A
Carlson, Kathleen C
Carlson, Luke
Carrillo, Lisa A
Caster, Dennis D
Caudle, Joseph L
Chambers, Hollie
Chandra, Elvin N
Clifton, Dawn L
Coe, Alissa L
Copple, Arthur A

Coslett, Graham J
Costello, Julie C
Coughlin, Daniel J
Creameens, Glenda R
Crippen, Heather M
Crowson, Lenora N
Dahn, Angela M
Daily, Amy L
Damewood, Sandra I
Darden, David M
Datri, Betsy L
Davis, Kira A
Davis, Robert
De Deken, Ivy J
De Roos, Rosalynn G
De Vita, Dixie
DeFazio, Daniel I
Dial, Steven A
Dillon, Harold T
Doherty, Chris P
Donoho, Jennifer
Donohue, Jesse
Douty, Denise D
Drake, Roxann M
Duckworth, James F
Duke, Christina G
Dunaway, Eric M
Elgar, Ulysses W
Ellis, Jessica L
Ellison, Eric B
Empey, Acacia D
England, Linda K
Erickson, Rachael L
Erpelding, Tamara J
Erwin, Richard A
Escudero, Marta E
Ewing, Cheris M
Fancher, Maia V
Fanno, Traisa L
Farrell, Shannon T
Feagles, Art B
Fender, Amy L
Filipski, Julie J
Fletcher, Andrea M
Fletcher, Pamela L
Flock, David W
Flomer, Misty Mae
Forest, Noah A
Foster, Cynthia A
Frazier, Hilery A
Freedom, Kindra T
Fritz, Corie A
Frizzell, Doug M
Fujioka, Miyuki
Gamman, Christopher A
Gattone, Mikhelle L
Germain, Dawn
Gianforti, Mark A
Gilliland, William A
Gilman, Sara L
Gilmore, Joy A
Girardi, Julia B
Goerres, Wayne L
Goggins, Jessica B
Gomez, Sari A
Gordon, Shayna A
Graham, Jordan J
Gratsinger, Timothy R
Greer, Nathanael P
Griffith, Michael D
Grimes, Michael
Gross, Michael K
Gruener, Ray
Gruin, Kristen L
Guard, Steve A
Guidero, Michael
Gulliver, David V
Guthrie, Pamela
Haase, Eva L
Haddon, Veranda C
Hale, Rebecca L

Hall, Amy K
Hall, John R
Halper, Laura
Halstead, Georgia L
Hammond, Laurie M
Hancock, Kathryn S
Hansen, Michael
Harp, Robert E
Harper, Wesley R
Harrach, Tamara K
Harris, Benjamin A
Harris, Kelly A
Hatch, Amanda R
Hayes, Ross M
Hellebust, Kane M
Henrikson, Mark D
Heuser, Aaron M
Hibbard, Deborah L
Hillebrand, Rebekah A
Hillebrand, Yachin J
Hinkle, Andrea I
Hisey, William D
Ho, Ching-Yi
Holdship, Yann
Holloway, Jeffrey L
Hoogendoorn, Corey E
Hoops, Colin J
Hopkins, Jason M
Horn, Gabriel C
Huebner, Susan M
Huff, Silan S
Hunter, Michael W
Hurst, Douglas R
Imel, Kari
Ingram, Cindy D
Ingram, Linda C
Jenkins, Tricia L
Jensen, Bettina Greve
Johnson, Chris M
Johnson, Robin B
Jones, Alison J
Jones, Theresa A
Joyce, Emily M
Justman, Jessica J
Kaiser, Susanne W
Kellenbeck, Derek B
Kendall, Lee G
Khome, Thiravudh
Kim, Hae Kyung
Koblas, Ken M
Koch, Melissa
Kocsis, Charles W
Kocsis, Dana C
Kohl, Mira
Koozer, Lori C
Kowitz, Mark E
Kreuzer, Thuy H
Kristjuhan, Kalev R
Krueger, Tamara N
Kulish, Mary C
Kurashige, Ryan T
Kurtz, Jennifer D
Lachman, LouAnne M
Laiche, Forrest K
Lampros, Marisa C
Lanz, Brandy D
Lapchynski, Walter
Larson, James J
Larson, Pamela J
Lasseigne, Heather R
Lawson, Sheila R
Le, Anh
Leach, Mickie R
Leigh, Tracey
Leon, David S
Levine, Keren O
Lillingston, Trevor H
Lindgren, William R
Linenbrink, Kathie L
Lipner, Shana W
Lippert, Dwight E

Lockwood, Adam B
Loennig, Lisa B
Loewe, Bruce E
Lorts, Amanda K
Lowell, Micheal W
Lubofsky, Melissa L
Lueck, Tiffany E
Lukens, Angela R
Luper, Anne-Therese Cermo
Lynch, Gregg W
Maahs, Leslie K
Madsen, Aimee G
Main, Sarah
Makishima, Ayaka
Manweller, Oralynn R
Mariansky, Gal
Marion, June R
Markel, Michael J
Marshall, Peter A
Martell, Brent D
Martin, Rebecca L
Martin, Stefan Fitzer
Martines Alcaín, Tiana P
Mashiko, Akane
Masukawa, Jaime K
Mathews, Susan M
Mayfield, Andrew D
Mc Alexander, Justin S
Mc Claflin, Terri E
Mc Connell, Marcus R
Mc Cown, Kristi A
Mc Cracken, Timothy C
Mc Evoy, Jennifer E
Mc Graw, Ronald W
Mc Kay, Rianna C
Mc Manis, R Ed
McBride, Kathleen R
McCabe, Erin
McKeithen, Justin W
McReynolds, Margaret
Mead, Emily E
Meador, Angela M
Melton, Kari B
Mentzer, Silas
Merchant, Nancy L
Mertens, Sara B
Messere, Michele L
Meyer, John M
Meyers, Anna L
Micheli, Joshua P
Miller, Kimberly D
Miller, Pamela A
Miller, Renee M
Miller, Travis L
Mills, Sarah N
Mitchell, Debora A
Mondou, David A
Moore, Kathleen L
Morse, Jedidiah N
Mosley, Levi M
Motley, Richard A
Murry, Michael D
Murry, Shane D
Musgrove, Trent W
Nadolny, John B
Nahas, Sandra R
Neat, Breckon E
Nelson, Laurel E
Nesbitt, Laurie B
Nevin, Thomas M
Newell, Channa
Nichols, Lindsey
Nordin-Tuininga, Nathanie
Norgang, Michael C
Norland, Melissa B
Nute, Rachelle D
Olsen, Yvette M
Pacheco, Lisa B
Palmer, Barbara J
Paoff, Roxcella R
Paradis, Danielle M

Parker, Tawnya O
Paterson, Brian W
Paulus, William H
Peralta, Rolando J
Perkins, David M
Perkins, Jason S
Perry, Adam L
Pesek, Emily C
Petersen, Jolene L
Porter III, William S
Powell, Bryan G
Price, Jonathan C
Pruitt, Nathan
Radich, Mark I
Rahier, Marcia G
Recknagel, Shayne R
Reedy, Cheryl A
Reilly, John P
Rhoads, Angela J
Rhoden, Sheryl R
Rhudy, Brittany A
Richards, Susan
Riedl, Anthony J
Riney, Brooke
Rios, Sierra L
Robbins, Richard
Roberts, Deanna
Roberts, Elizabeth
Robinson, Jacob M
Rosenthal, Cheryl L
Ross, Angela K
Ruckes, Frances J
Rush, Dianne R
Sahl, Courtney C
Saito, Yuki
San Filippo, Rory M
Sartorius, Eva D
Satterwhite, Susan H
Sayre, Heather L
Schimpf, Amy M
Schmick, Bryan G
Schneider, Harmonie B
Schneider, Kristine R
Schneider, McLean
Schoenberg, Justin A
Schomberg, Karen K
Schott, Shannon M
Scott, Natasha
Scriven, Shawn D
Scroggins, Coy R
Sharp, John E
Shisler, Jared A
Siewert, Jonathan R
Simard, Brian J
Simmons, Valerie J
Simpson, Ethan J
Singh, Hariom
Sisson, Zoe M
Slater, Ronald R
Smith, Chad M
Smith, Christina E
Smith, Corey R
Smith, Lincoln C
Smith, Monty R
Smith, Randall B
Smith, Tamara A
Smith, William D
Snyder, Jason A
Sorensen, Stephanie K
Spain, Frederick K
Spalding, Heidi K
Sparks, John M
Spencer, Vickie L
Spiegelberg, William G
Stafford, Cheryl C
Starke, Alexander G
Starke, Anne N
Stevens, Emmaline B
Stevenson, Gail C
Stifle, Rachele N
Stockwell, Jennifer L

President's List *continued from page 6*

Stone, Wanda L
Strahon, Patrick M
Sullenger, Jeremiah R
Summerhayes, Tobias E
Suttinun, Noppamas
Swain, Chris
Taff, Debra K
Tapia, Monica S
Taylor, Patrick B
Taylor, Sara R
Teschan, Jeremiah J
Thomas, Alan W
Tiefer, Jonathan D

Titus, Roy F
Todd, Theresa C
Trousil, Heather L
Tsuchida, Kozue
Ulam, Layla
Vaale, Karri D
Van Staden, Belinda E
VanCamp, Robert G
Vance, Melissa J
Vanderhoff, David B
Vanness, Britton C
Veeman, Anne M
Vidal, Elaine J

Villamarin, Marjorie B
Vincent, Elizabeth A
Wagner, Sarah L
Waite, Michelle L
Walker, Heidi
Walker, Jennifer M
Warren, Ana L
Watkins, Peter
Watts, Sarah A
Weller, Lori J
Wells, Gredel L
Wertz, John A
Wesler, Dwayne C

Westerman, Miranda Faye
Wheeler, Carl L
Whinery, Joel E
Whitmore, Charles M
Wilcox, Daphna M
Wilson, Jebediah S
Wilson, Sarah A
Winters, Amelia H
Wood, Andrea D
Woodward, Charles W
Woolley, Lance P
Worcester, Naomi N
Worden, Daniel J

Work, Jennifer D
Wright, Aaron C
Wynveen, Sara E
Yasin, Martin
Yeager, Jason M
Zacharias, Debra J
Zierke, Tina D
Zublin, Benjamin T
deTschaschell, Daniel

Vice President's Scholar List ~ Winter 2002

VP Scholars completed 12 graded credit hours and earned a GPA of 3.55 to 3.99 for three consecutive terms.

Abbott, Elizabeth W
Armstrong, Jon T
Arnold, Jacob S
Asman, Miska Dawn
Barba, Mandy A
Bennett, Bethany
Bohe, Michael E
Brokaw, Julie A
Brown, Molli E
Calhoun, Kimarie A
Carrillo, Lisa A
Chambers, Brandy B
Champer, Jackson T
Charbonneau, Kimberly A
Collins, Deborah A
Comstock, Natalie A
Cooper, Jamie L
Cummings, Brent H
Cunha, Richard A
Daily, Amy L
Danielson, Benjamin R
Donnelly, Natasha
Donoho, Jennifer
England, Linda K

Feren, Eric W
Filipski, Julie J
Gattis, Josh
Glaser, Debra L
Goggins, Jessica B
Graham, Danah M
Griggs, Kim
Guthrie, Pamela
Haddon, Veranda C
Hall, Shannon L
Harris, Benjamin A
Haugland, Alex D
Hernandez, Manuel E
Hill, Rebecca S
Hisey, William D
Holloway, Jeffrey L
Hood, Searose
Howell, Barbara D
Hung, Yu Wen
Jacobs, Christopher T
Jensen, Bettina Greve
Justman, Jessica J
Kamimura, Tomonori
Kavanagh, Elizabeth S

Kent, Cindy M
Kowitz, Mark E
Lachman, LouAnne M
Larson, James J
Le May, Gabriel F
Lemer, Benjamin C
Lind, John R
Loennig, Lisa B
London, Megan M
Lukens, Angela R
Maahs, Leslie K
Mares, Jennifer
Mc Cloud, Jamie N
Mc Mahon, Nicole A
Mc Minn, Kelley A
Mc Naughton, Luke J
McKeithen, Justin W
Mena, Anna A
Miller, Richard W
Modesitt, Erika K
Moore, Kathleen L
Morrison, Jim
Motley, Richard A
Munro, Stacey L

Nahas, Sandra R
Nakai, Hisae
Nanakornpanom, Steve
Nelson, Christian P
Nichols, Lindsey
Palmer, Bonnie A
Percey, Matrisha M
Perkins, Tabitha C
Perry, Sarah
Petersen, Jolene L
Pileggi, John S
Piper, James
Ragghianti, Nancy C
Reedy, Cheryl A
Robinson, Jacob M
Ros, Michelle M
Sachdeva, Munit
Sadhana, Darshan
Sakairi, Jiro
Sasagake, Tomohiro
Schaal, Nichlas A
Scheumack, Lasha M
Seo, Dong Seon
Shisler, Jared A

Simpson, Jessica L
Sisson, Zoe M
Spencer, Vickie L
Summerhayes, Tobias E
Ternstrom, Petter
Trousil, Heather L
Troutman, Toni L
Umemoto, Satoshi
VanCamp, Robert G
Vickroy, Clarisa L
Voris, Brian S
Weise, Robert L
Weller, Lori J
West, Daniel
White, Cherie L
Williams, Kenneth A
Williams, Maria P
Woolery, Glenn A
Youra, Neil F
Zierke, Tina D
deTschaschell, Daniel

Vice President's List ~ Winter 2002

The following students have earned a Grade Point Average of 3.55 to 3.99 for 12 graded credit hours

Abston, Melissa A
Ackermann, Ken B
Adams, Brandon R
Akers, Renee J
Akins, Angela L
Alaniz, Michelle S
Alberts, Sandy J
Alexander, Pamela J
Alfonse, Michael J
Alleman, Carrie L
Allender, Mary L
Allsop, Amanda B
Altemus, Matthew A
Anderson, Corinne M
Anderson, Jesse A
Anderson, Rachael L
Anderson, Shelby A
Anthone, Sonja J
Apelbaum, Harry T
Archer, Kimberly S
Arndt, Kim Marie
Arnette, Kimberly M
Asman, Miska Dawn
Atherton, William O
Aulenbacher, Natalia E
Bailey, Linda S
Baker, Derek C
Baker, Lance T
Baker, Michael E
Baker, Shanna B
Barnes, Steven R
Barnhart, Laura T
Barone Gilmore, Ariele B
Barry, Elizabeth A
Bates, Tiffani A
Bauman, Sarah R
Bayne, Denise K
Beckman, Kyle D
Bell, June A
Benetreu, Ryan J
Bennett, Christina L
Bennett, Donna L
Benz, Leslie L
Benzel, Marita A

Berg, Karla J
Bertalotto, Jennifer E
Betty, Isaac J
Bigelow, Ryan W
Bike, Loretta
Bilenki, Jonathan M
Birkovich, Stephen
Blansit, Dione E
Blevins, Deidre A
Block, Janene
Blunt, Christopher P
Bohlender, Peggy
Boling, John S
Bonner, Wallace
Borchers, Erin J
Bowers, Walter
Boydston, Lindsey M
Brady, Steven D
Brannan Lindsey, Bria R
Brasch, Jason A
Brazeau, Jody M
Breeding, Pamela J
Brenner, Debbie L
Brewer, Mark A
Brock, Cindy L
Brooks, Adam C
Brooks, Christine L
Brosnan, Stephen
Brougher, Melissa J
Brown, Julianne
Brown, Molli E
Brown, Shane L
Bruner, Everett L
Brusegaard, Michelle L
Buchanan, David L
Buchholz, Douglas S
Bunting, Leonard J
Burch, Nigel
Burden, Ronald F
Cabrera, Bradley J
Cairnes Wurster, Sally J
Calhoun, Kimarie A
Cannavaro, Emily W
Cantwell, Sara L

Carleton, Ronald
Carnes, Misty D
Carroll, Kindra A
Carson, Matt
Carter, Ian M
Castle, Mandi R
Caughey, Morgan P
Chambers, Brandy B
Champer, Jackson T
Chaplin, Jubal C
Chappelle, Roberta K
Charbonneau, Kimberly A
Charlesworth, Sarah M
Chase, Kristina
Chen, Chunting
Cherosky, Jule E
Christensen, Michael
Christensen, Shellee M
Clark, Cameron
Clark, Christian S
Clark, Joseph R
Clark, Sara J
Clemmer, Racheal J
Cockrell, Jessica D
Codieck, Alice L
Coffin, Kathleen M
Cole, Brandon C
Cole, Dawn
Cole, Jacob A
Cole, Joseph E
Cole, Raymond F
Cole, Sandy L
Coleman Berger, Cara S
Collicott, Leslie M
Collins, Deborah A
Colvin, John A
Comstock, Natalie A
Conger, Tanya S
Conley, Kathleen
Cooper, Jamie L
Cooper, Melissa J
Cordaro, April F
Cordon, David A
Cordon, Joanne L

Core, Andrew J
Cornie, Todd
Couture, Jaime C
Cox, Cynthia L
Cox, Exnor N
Cox, Jake W
Crum, Travis W
Cullen, Kacy E
Cummings, Brent H
Cunha, Richard A
Curley, Toby J
Danielson, Benjamin R
Darcy, John A
Darwish, Adam M
Davey, Dara J
Davis, Jason R
Davis, Raymond C
Davis, Stacy R
De La Vergne, Sandra
De Maio, Emily C
De Young, Abigail
Decker, Robin M
Deere, Amy M
Dehart, Annie
Delavan, Christina D
Deskins, James D
Diaz, Charles D
Dieball, Patricia B
Diess, Sherryee A
Dillon, Mindy K
Dinsmore, Matthew T
Doherty, Amy E
Donahue, Danelle K
Donaldson, Joseph B
Donnelly, Natasha
Donovan, Daniel J
Drago, Sarah E
Dragt, Zachary C
Drake, Jennifer L
Drake, Lisa R
Dugan, Victoria
Dunstan, David A
Dupret, Richard W
Eastburn, Jennifer M

Edington, Delilah J
Edwards, Brandy J
Eggimann, Emily
Einstein, Beverly
Elliott, M Summer
Englund, Kimberly J
Erdmann, Zach A
Estey, Elizabeth
Evans, Amanda
Evans, Gary M
Fabbri, Emily
Faddis, Faith E
Fairchild, Jason S
Falepapalangi, Peni
Farley, Melissa S
Feren, Eric W
Fetsko, Frank G
Fish, Robert D
Fisher, Nathanael S
Fisk, Bonnie
Fitzgerald, Cristina E
Flowers, Erika J
Ford, Roland S
Foster, Rebekah
Fousek, Benjamin T
Frances, Amie J
Francisco, Nigel H
Francque, Thomas B
French, C Michael
Fruichantie, Samantha
Fruin, Steven G
Fugate, Vita L
Gabbard, Marsha
Galey, Brian K
Garabedian, Monica
Garcia, Anthony G
Gattis, Josh
Gaughan, Erin E
Geeraerts, David
Gerber, Robert M
Gibson, Gwen G
Gibson, Michael A
Gilbert, Kelda G
Gilman, Jennifer R

Vice President's List *continued from page 7*

Glaser, Debra L
 Glover, Jessica M
 Gohl, Sonia A
 Goldberg, Travis G
 Goldsmith, Jason C
 Gomi, Mariko
 Goodman, Geoffrey M
 Gorseger, Justin R
 Goss, Jennifer S
 Gossweiler, Carrie J
 Grace, Travis C
 Graham, Danah M
 Graue, Michael W
 Graves, Christy L
 Greig, Brian S
 Griggs, Kim
 Griswold, Lee Marie
 Grover, Kathleen A
 Guadagni, Jaime N
 Guttry, Jessica S
 Gwinup, Melissa L
 Haberkorn, Jayson
 Hafen, Leland W
 Haines, Samuel R
 Hall, Shannon L
 Haller, Jeanette A
 Hamblen, Emily E
 Hanazaki, Hiromi
 Handy, William D
 Haney, Dylan R
 Hankins, John
 Hansen, Racheal J
 Harlow, Robert
 Harris, Angela L
 Hart, Angela M
 Hass, Rebekah
 Hauck, Robyn L
 Haugland, Alex D
 Hawes, Brigitta E
 Haworth-Liu, Sian May
 Haynes, Roslyn D
 Heath, Tiffany
 Hernandez, Manuel E
 Hersh, Justin M
 Hettwer, Tawnya R
 Heuer, Brittany Irene
 Higgins, Brandi A
 Hill, Rebecca S
 Hindman, Melanie T
 Hitchcock, Robert M
 Hochstetler, Melodie A
 Hoernke, Lisa R
 Hoernlein, Lars E
 Hoffmann, Liane
 Hoffmann, Rheanna
 Hogan, Brendan J
 Hogan, Shane
 Holland, Jenae R
 Hollander, Miles
 Holloway, Charles M
 Holt, Tim M
 Homan Hall, Travis C
 Hood, Searose
 Horton, Charles D
 Horton, Jennifer L
 Hovland, Ryan W
 Howell, Barbara D
 Howell, Nicole D
 Huang, Yen Lien
 Hubbard, Ben E
 Hung, Yu Wen
 Hunter, Richard B
 Hurst, Jacquelin L
 Isbell, Sandra L
 Ito, Amame
 Iverson, Brent
 Ivey, Thadeus
 Jacobs, Alisha M
 Jacobs, Christopher T
 Jastremsky, Anna E
 Jeffs, Richard E
 Jenkins, Hannah M
 Johansson, Christopher T
 Johnson, Carmen Y
 Johnson, Heather J
 Johnson, Nicholas A
 Johnston, Keelia C
 Jones, Caitlin D
 Jones, Jeremy W
 Jones, Michelle C
 Jordan, Marlene K
 Kaiser, Tim A
 Kalkhoven, Rodger N
 Kamimura, Tomonori
 Karmy, Jeffrey R

Kasper, Damion T
 Kavanagh, Elizabeth S
 Kay, Rebecca T
 Keenan, Sara M
 Keep, Lacey K
 Keimig, Lloyd E
 Keith, Donovan J
 Kenady, Michael R
 Kendall, Candace A
 Kennison, Jesse H
 Kent, Cindy M
 Kern-Craft, Kelly A
 Kerr, Maria L
 Killam, Miriah D
 Kimball, Erin N
 King, Megan M
 Kinsey, Zane T
 Knight, Matthew M
 Koch, Kindrah
 Koen, Anna M
 Krause, Mary C
 Kreiling, Job M
 Kremer, Mark A
 Kroner, Lisa
 Lacy, Anna L
 Lael, Lani A
 Landau, Katie A
 Langan, Alisha R
 Langston, Kimberly K
 Larson, Douglas J
 Lawshe, Ruth
 Layman, Eric B
 Layman, Karyn M
 Le May, Gabriel F
 Leach, Andrew C
 Ledfors, Cristil M
 Lee, Chia-Fong
 Lee, Tosheba C
 Legorreta, Nadia F
 Lei, Shixiu
 Lembke, Eric M
 Lemer, Benjamin C
 Lennox, Shanara
 Leslie, Jeffrey S
 Lewellen, Aubra A
 Lewis, Clint W
 Lewis, Kyle D
 Liberatore, Blaine W
 Lind, John R
 Linde, Autumn D
 Lindquist, Kimberly C
 Little, Lauren K
 Liu, Serena
 London, Megan M
 Long, William
 Lowrey, Timothy D
 Loy, Cody
 Lydum, Debra F
 Magaya, Tsitsi M
 Makambo, Misenga M
 Malo, Jessica J
 Manley, Nicholas A
 Mannila, Donna L
 Mares, Jennifer
 Mariuma, Anat
 Markley, Gabriela P
 Marsh, Jennifer
 Martin, Cindy Ann
 Matsumaru, Tomoko
 Matsutani, Tairo
 Matsuura, Hiroki
 Matthews, Lynn J
 Maxwell, Teresa L
 Mc Bride, Cole E
 Mc Carthy, Jeannie
 Mc Cloud, Jamie N
 Mc Cready, Emily R
 Mc Gurk, Erin N
 Mc Leod, Lindsay D
 Mc Mahon, Nicole A
 Mc Minn, Kelley A
 Mc Naughton, Luke J
 McComas, Kristine L
 McEntire, Nicholas B
 McGraw, Sara L
 McNamara, Jonathan M
 Medsker, Martha
 Meidinger, Haley M
 Melendez, Lynne A
 Mellor, Terilyn
 Mena, Anna A
 Mendenhall, Diana C
 Mera, Manabu
 Mertens, Paul A
 Michalek, Quinn R

Mikami, Tomoki
 Miller, Adam J
 Miller, Christina
 Miller, Emily R
 Miller, Jason M
 Miller, Mick S
 Miller, Richard W
 Minton, Anita E
 Miraglia, Eryn H
 Mitchell, Sheri
 Mitchinson, David
 Mitrani, Rachel
 Miyamoto, Naho
 Modesitt, Erika K
 Montgomery-Nassif, Schuyll
 Moon, Georgina Rae
 Moore, Amy K
 Morris, Penny L
 Morrison, Jim
 Morrissey, Erin
 Morton, Connie S
 Motsinger, Leah I
 Munro, Stacey L
 Nail, Melissa K
 Nakai, Hisae
 Nanakornpanom, Steve
 Neal Mc Kinney, Jason M
 Neall, Katherine M
 Nebergall Roberts, Stefan
 Neiman, Dustin W
 Nelson, Ben C
 Nelson, Brandy M
 Nelson, Christian P
 Nelson, Peter R
 Ness, John R
 Ng, Choi Chun
 Nichols, Danielle
 Nichols, Kelly M
 Nickerson, Kimberly
 Nishiguchi, Yoshiko
 No, Dong H
 O Rear, Wyatt A
 O Shea, John C
 O'Reilly, Luke C
 Oakes, Rickie D
 Oh, Sojin
 Olson, Derek J
 Olson, Nevin J
 Ong, Rosemarie
 Osborne, Erin C
 Outland, Allen D
 Overbaugh, Bret M
 Overholt, Kristie M
 Paben, Jared G
 Paine, Charles N
 Palmer, Bonnie A
 Papagni, Julie M
 Parchen, Eric T
 Parra, Celia F
 Paynter, Tanya
 Peake, Andrea M
 Peeler, Barbra J
 Penland, Joshua V
 Pennington, Sabrina D
 Percy, Matrisha M
 Perkins, Adam M
 Perkins, Tabitha C
 Perry, Sarah
 Petersen, Miranda J
 Peterson, Lindsay D
 Peterson, Lora D
 Pileggi, John S
 Piper, James
 Pletcher, John F
 Plumb, Jared L
 Podvent, Sean M
 Policha, Tobias J
 Polk, Ivan
 Pollard, Deborah L
 Pond, Toby G
 Pontious, Patience K
 Poulblon Walden, Nick C
 Poverman, Brian G
 Powell, Michael
 Prevost, Paul Remi
 Price, Jon M
 Pugh, Heather M
 Purington, Phillip W
 Quinney, David J
 Raghianti, Nancy C
 Raines, Jamie G
 Rainey, Joshua A
 Ramp, Emily
 Rasche, Clark E
 Reay, Stephen L

Reece, Timothy L
 Reed, Barbree E
 Reichert, Lydia F
 Reimuller, Paul
 Rhoden, Cassidy L
 Richardson, Gary D
 Riel, Christine L
 Rigtrup, David E
 Rinnan, Scott D
 Robb, Mike D
 Roberts, Aaron L
 Roberts, Karla
 Roberts, Thomas W
 Robinson, Brady D
 Rocha, Jessica M
 Roderick, John
 Ros, Michelle M
 Rosa, Danielle J
 Roselip, David K
 Ross, Angel L
 Rutledge, Sam J
 Sachdeva, Munit
 Sadhana, Darshan
 Sadhana, Wakan
 Sakaida, Micolle Y
 Sakairi, Jiro
 Sakurai, Motoyuki
 Salvia, Vanessa N
 Sanger, Sierra C
 Santana-Naranjo, Carlos S
 Sasagake, Tomohiro
 Sasaki, Ryusuke
 Savage-Greene, Arlo Ethan
 Scarpelli, Mike
 Schaal, Nicholas A
 Schell, Judith A
 Scheumack, Lasha M
 Schiller, Michelle A
 Schlessinger, Andre
 Schmidling, Mindy R
 Schmidt, Eben C
 Schober, Jessica E
 Schultz, Yael A
 Schulze, Ariel N
 Schulze, Robert M
 Schweitzer, Terri M
 Scott, Albert C
 Scott, Jennifer
 Scott, Sandra M
 Scott, Willow M
 Seagoe, Andrew P
 Senn, Chelsea L
 Seo, Dong Seon
 Seo, Jung A
 Seymour, Jessica D
 Shaw, Steven A
 Sherman, William J
 Siegel, Rachel S
 Sievers, Jamie A
 Simantel, Sarah E
 Simdars, Brenda L
 Simpson, Cali R
 Simpson, Christy K
 Simpson, Jessica L
 Sims, Nicole E
 Singler, Chris D
 Sitz, Caylee W
 Slater, Annmarie
 Slaton, Anna C
 Slaughter, Robert
 Slomp, Jane E
 Sleutel, Jennifer L
 Smith, Donna
 Smith, Jessica A
 Smith, Porter A
 Smith, Stephanie D
 Snowhook, Janelle E
 Soerheide, Laura B
 Solcova, Wendy V
 Soldano, Christopher N
 Solesbee, Ryan E
 Soto, Chris R
 Southwell, Andy E
 Spears, Jessica M
 Spencer, Mike
 Spring,
 St Lawrence, Holly R
 Staat, Aubrey
 Stack, Patrick M
 Stamatis, Seth N
 Steil, Maria D
 Stevens, Misty
 Stone II, John D
 Stratis, Carol E
 Stratton, Cathy L

Strecker, Catherine R
 Streng, Trevor
 Stribling, Gail F
 Subekti, Andreas
 Suga, Yoko
 Summers, Melissa S
 Sumner, Marybeth L
 Sutherland, Shayne J
 Swaim, Michelle D
 Swanson, Jodie E
 Swift, Sharon L
 Swigart, Erin L
 Swing, Lou A
 Takashima, Michiko
 Tang, Hou
 Taylor, Jessica N
 Taylor, Keena M
 Ternstrom, Petter
 Terry Van Natta, Susan K
 Thomas, Curt M
 Thomas III, James W
 Thornton, Shellyann M
 Thurman, Shaine C
 Toney, Kathleen S
 Trank, Leah A
 Trenary, Sabrina A
 Troutman, Toni L
 Truesdale, Craig A
 Trunnell, Kathryn A
 Tucker, Brian R
 Tynan, Stephanie J
 Tyson, Cassandra L
 Udagawa, Masaaki
 Ulmer, Alicia
 Ulmer, Gary E
 Umemoto, Satoshi
 Ungar, Jennifer R
 Urban, Jeremy D
 Utterback, Eddie J
 Vargas, Joshua D
 Vejraska, Wayne A
 Vickroy, Clarisa L
 Voris, Brian S
 Wade, Leah F
 Wagner, Todd D
 Waite, Sarah M
 Wajer-Lang, Erin F
 Wales, Jesse R
 Walker, Ivan D
 Wall, Heather M
 Walton, Kathryn
 Wamsley, Cody C
 Ward, Ginny L
 Webb, Pamela S
 Weidenhaft, Megan C
 Weise, Robert L
 West, Daniel
 Wharton, Aaron J
 Whipple, Ashley E
 White, Cherie L
 White, Diana L
 White, Jessica L
 Whitney, Denise L
 Whittaker, Tim
 Wicks, Christina
 Wienecke, Kyle
 Wilber, Kristin Victoria
 Williams, Kenneth A
 Williams, Maria P
 Wilson, Elizabeth A
 Wilson, Richard W
 Wise, Ryan M
 Witten, Sam T
 Wolcott, Zachary T
 Wolfington, Aliene
 Wong, Ingrid
 Woods, Jody L
 Woodworth, Charlotte M
 Woolery, Glenn A
 Wooley, Angie
 Worley, Kala
 Yager, Ann M
 Yamasaki, Nagisa
 Yeh, Ching
 Yoder, Brenda A
 Yoshida, Yasushi
 Young, Jessica A
 Young, Kara L
 Youra, Neil F
 Zabel, LaRae L
 Zarrugh, Mohamed B
 Zilm, Andrew T
 Zimmerman, Michael J

ArtsyPeople

Drummer helps LCC keep its beat

Valerie Link
Assistant A&E Editor

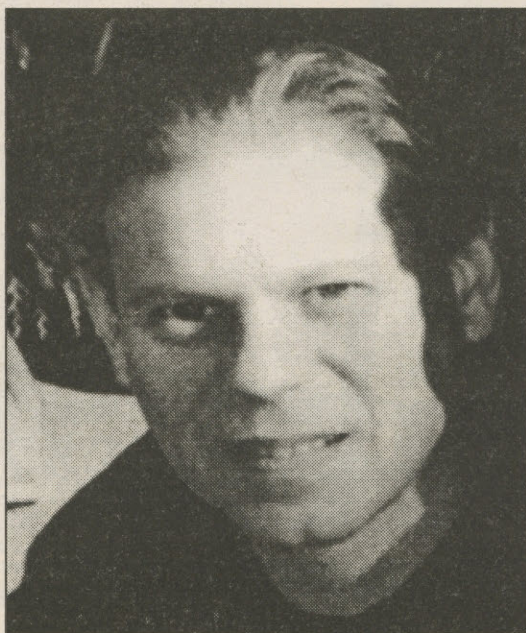
Some people find out what their life's work is in college; others discover it during high school. Then there are those who start doing what they're meant to be doing before they even learn their multiplication tables. Alan Tarpinian found his calling when he was 7-years-old.

Tarpinian, originally from Norwalk, Conn., has been playing drums for almost his entire lifetime. At the age of 7, after watching his brother play bugle in a drum and bugle corps, he decided that it would be fun to try the drums. Now he's a freelance drummer and independent drum instructor.

Tarpinian teaches from his home, and occasionally helps out with LCC's jazz band, big band and plays in the yearly Faculty Jazz Concert.

Tarpinian earned a bachelor's degree from the New England Conservatory in classical guitar, an instrument he has been playing since the age of 13.

"The discipline of classical guitar is something that drummers don't often experience. You have to really get inside of the music. It's very intricate. Also, classical guitarists can't often experience the music flowing as you can in jazz. I use the drums to help the music flow when I play guitar."



Alan Tarpinian

Tarpinian is married and has two children. He has been the secretary for the previous 10 years at the Musicians Association, a local musician's union. And he has been passing his love of music down to his children. His son, James, is a big band pianist and student at Lane.

Get Torched!
Write for LCC's
student newspaper
next year.
Call at 463-5657



Pony Express
Restaurant Delivery

We deliver from 21
different restaurants:
Thai, Chinese, Mexican,
Indian, Italian, Pizza
and Bar & Grill.

485-2090

www.ponyexpressdelivery.com

EARN MONEY!



AVENTIS-Biocenter-Eugene
1901 W. 8th Ave., Eugene
1 block east of 8th and Garfield

SAVE LIVES!

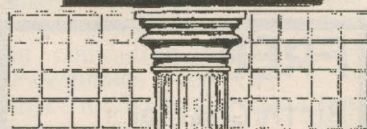
CASH!

683-9430



UNIVERSITY
COMMONS

NOW
LEASING



1, 2 & 4 Bedroom Apts.
with washer & dryer

APARTMENTS
90 Commons Drive

Bus routes to campus

Private bedrooms/individual
leases

Computer lab, copier and fax
availability

Free Roommate matching service

Heated swimming pool

Decked out kitchens

Electronic alarm system

Basketball & sand volley ball
courts

338-4000

Superior workout facility
CALL NOW!
open 7 days a week

www.universitycommons.com

A&E Calendar

May 23

•Lane Chamber Orchestra
7:30 p.m.
Central Presbyterian Church,
at 15th and Patterson
Cost is a suggested
donation of \$5.

•The Collaborations 2002
Dance Concert
Cost is \$8 general public and
\$6 students and seniors.
Main stage at LCC's
Performance Hall.

•LCC Graduating Graphic
Design Show 2002
Mon.-Fri. 8 a.m.-5 p.m.
Graduation/Reception June 12
4-6 p.m.
Free

•Magical Thursday featuring
Donald Glaude, Dig-Dug,
Silver
8 p.m.-1 a.m.
\$12 at the door
WOW Hall
DJ Dance Party

May 24

•The Collaborations 2002
Dance Concert
Cost is \$8 general public and
\$6 students and seniors.
Main stage at LCC's
Performance Hall.

•Lesbopalooza:
Tami Hart, Aisha Ayers,
Cris Williamson, and Jordan
Blumberg-Engel
8 p.m.
\$10 at the door (\$15 for both
nights) and \$8 for UO
students (\$10 for both nights)
WOW Hall
Rock/Folk/Performance Art

May 25

•The Collaborations 2002
Dance Concert
Cost is \$8 general public and

\$6 students and seniors.
Main stage at LCC's
Performance Hall.

•Lesbopalooza:
Infinite X, Celeste,
Tracy & the Plastics,
The New Shenanigans
8 p.m.
\$10 at the door (\$15 for both
nights) and \$8 for UO
students (\$10 for both nights)
WOW Hall
Rock/Punk/Performance Art

May 26

•Adema with Trust Company
8:30 p.m.
\$15 advance/\$17 at the door
WOW Hall
Hard Rock

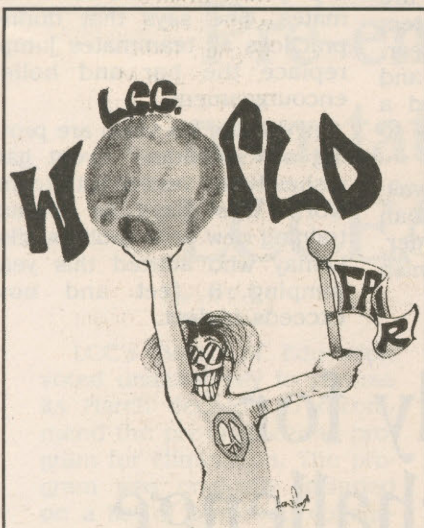
May 27

•Blackalicious, Onry Ozzborn,
DJ Zeph
9 p.m.
\$16 advance/\$18 at the door
WOW Hall
Hip hop

May 29

•Lord of The Rings
(LCC Symphonic Band)
Noon, dress rehearsal — FREE
7:30 p.m.
\$4 general public/\$2 students
and seniors
Lane Performing Arts Building,
Main Stage
•A.F.I., The Distillers, Himsa
8:30 p.m.
\$12 at the door
WOW Hall
Punk Rock
•Will Bernard and Motherbug
9:30 p.m.
21 and over
Wild Duck
\$8 Eclectic

Compiled by Tate Woniya
A&E Editor



LCC's World Fair —
music, food, crafts
and more in
Bristow Square

May 23

11 a.m. — Lizard King
Productions (Hip hop)
Noon — Black Student Union
rally: Sen. Vicki Walker,
keynote speaker
1-2 p.m. — APASU fashion
show with DJ Hanif Panni
3 p.m. — Amerikanistan
Belly Dancers
4 p.m. — Chinese Line
Dancers

May 24

11 a.m.-1 p.m. — Metason
(Reggae)
2-3 p.m. — Alfredo and
Friends (Middle
Eastern/Turkish music)

Tired of
Lame Weekends?

Get a grip on
what you're
missing!



Every Thursday,
grab a free
Weekly for
culture, clubs,
and truth!

On
Campus
outside
Student
Center



EUGENE WEEKLY

Transfer to Willamette University**NOW
for FALL 2002**

Representative will be here at LCC on
Friday May 24
Boardroom 216
11 am — 2 pm

Willamette is eager to enroll additional transfer students for Fall 2002. We will work with you to make our outstanding Liberal Arts education affordable for you. Please stop by to talk with our representative, get your questions answered and even fill out an application.



FREE
Birth Control
Supplies & Services
for women & men.
Call to see if you qualify.

**Planned
Parenthood**

Three locations:
1670 High St, Eugene 344-9411
793 N. Danebo, Eugene 463-9731
225 Q St, Springfield 744-7121

Visit our website at www.pphsso.org

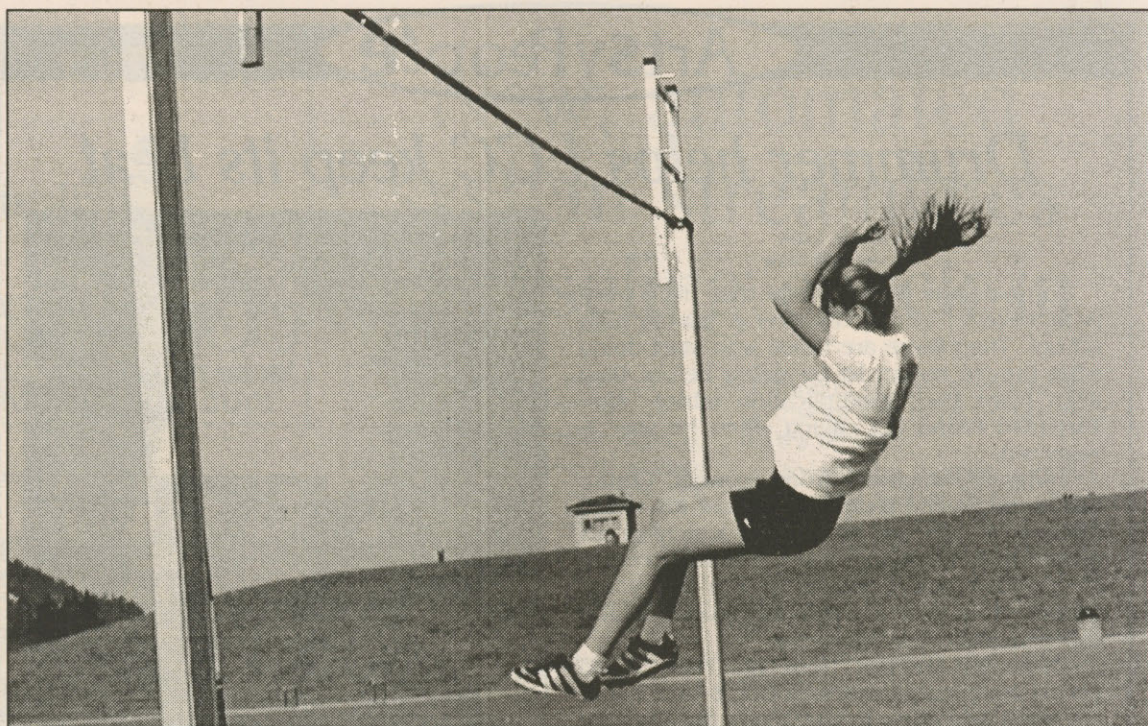


PHOTO COURTESY OF GRADY O'CONNOR, LCC TRACK COACH

Lane's women's cross country and field team member Christina Bell sets a new LCC women's record by clearing 11'6" in the pole vaulting competition at an NWAACC division championship.

Titans trample the field

Daniel A. Bartzan
Staff Writer

The culmination of a stellar season for LCC's Track and Field teams ends May 22 and 23, when the Titans return from a two-day Northwest Athletic Association of Community Colleges Division Tournament at Mt. Hood Community College.

LCC's Head Cross Country and Field Coach Grady O'Connor says the team has a leg up on the competition following a one-two Decathlon finish April 29 and 30 from Gabe Lemay's 6832 points and Keith Baker's 6601 points. LCC hosted the championship.

Ashlyn Terry finished third for the women in the Heptathlon event to round out LCC's points to 24 going into the final tournament.

Baker and Terry may prove

to be the team's high point scorers for the year with their successes in seven and five events respectively.

Mandy Peterson has placed high in the long distance 800, 1500, 3000, and 5000 meter events.

The Titan presence has been most noted in the 100 and 200 meter events as Nicole Brown and Skyler Reddington have resoundingly proven they are the most respected sprinters with the fastest times this year: 12:19 and 25:99, 10:58 and 21:63. Reddington suffered a injury recently, but hopes to return to cruising speed.

The team is anxiously awaiting our shot putters Dan Desmarteau, Evan Lybarger, and Josh Vanderhoof to finish one, two and three.

Her star has risen...

Christina Bell has raised the bar to new heights in pole vaulting. Her LCC record breaking height of 11'6", will guide and challenge future high jump travelers. In her first year of college her progress has exploded from her days at Sunset High School in Beaverton.

Bell credits her first record breaking to LCC pole-vaulting Coach Dan West an ex-Olympian coach and her teammates. She says that during practices all teammates jump, replace the bar and holler encouragement.

West and his team are proving an 'individual' event garnishes better results with teamwork. West says he prefers training new pole vaulters, like Lemay who started this year jumping 8 feet and now exceeds 14 feet.

Titans ready for championship challenge

Laura Martyn
Sports Editor

The Titans head off to the Northwest Athletic Association of Community Colleges Championships with a goal clearly in mind.

"Basically, they have four days to redeem themselves for the whole season," assistant Danny Grice said.

Lane lost three of their last eight games in the final stretch of the season, moving from first place, to one game back of the Mt. Hood Saints in the Southern Division.

Assistant Coach Steve Wolf agreed, saying "I expect everyone to step up and surprise us as much as they disappointed in not winning the division, by playing championship caliber baseball."

Troy Grimmer, the winningest pitcher in the NWAACC, will likely start the first game for Lane.

"It should have been more," Grimmer said of his league-leading nine wins. "I've always pitched better against better teams." He added that after a week's rest, and he was ready to throw hard.

Lefties Aaron Mills, Mike Sammis and Ken Brock (a combined 17-5) will likely fill out the rotation.

The pitching has been steady all year, so the Titans really need to focus on hitting. Lane will need offensive support from all of its players, as the team is right in the middle of the pack in terms of batting average. But this season has

seen all of the Titans step up and help win games. Porter Smith, who settled in as the Titans' leadoff hitter, led the team in both at bats and hits with 43.

Lane's slugger, Nick Currin, is right behind him with 41 hits in only 99 at bats. He also led the team in doubles (15), RBI's (30) and batting average (.414). "I didn't think about my stats all year, Currin said. "I guess my hitting just fell into place."

Anthony Taylor-Weber will be a welcome addition to the post season roster. After dealing with eligibility problems for the first half of the season, Taylor-Weber returned for the last 21 games, knocking in 20 runs and hitting three triples that tied him with Currin for first.

Earlier in the season, Head Coach Donny Harrel said the team needed to work on consistent team hitting. Lane has scored eleven runs or more in six of their games this season, so they are capable of breaking out the bats.

The Titans will face the Bellevue Community College Helmsmen (32-12) on the Helmsmen's home turf in the first round on May 23. But Lane isn't worried about it. This is a team stocked with players that support each other, and are ready to shoulder the burden. Catcher Justus Kimbrough echoed the thoughts of his teammates, when he said, "We want to end the year on a good note. I'll try and be a leader for the team, if they need me. We want to win this championship."

WORK IN A
**HELPING
PROFESSION.**
PREPARE FOR A CAREER, PREPARE FOR LIFE.

- ART THERAPY ■ MUSIC THERAPY
- COMMUNICATIONS ■ PSYCHOLOGY
- GERONTOLOGY ■ PUBLIC RELATIONS
- MONTESSORI TEACHING ■ RELIGIOUS STUDIES

US News & World Report 2002

lists Marylhurst University in its *Best Universities Category*, #1 in classes under 20 students and #1 in student/faculty ratio in the 15-state Western Region.

Course scheduling options are designed for working adults. To meet with an advisor, e-mail studentinfo@marylhurst.edu or call 800.634.9982 x 6268.

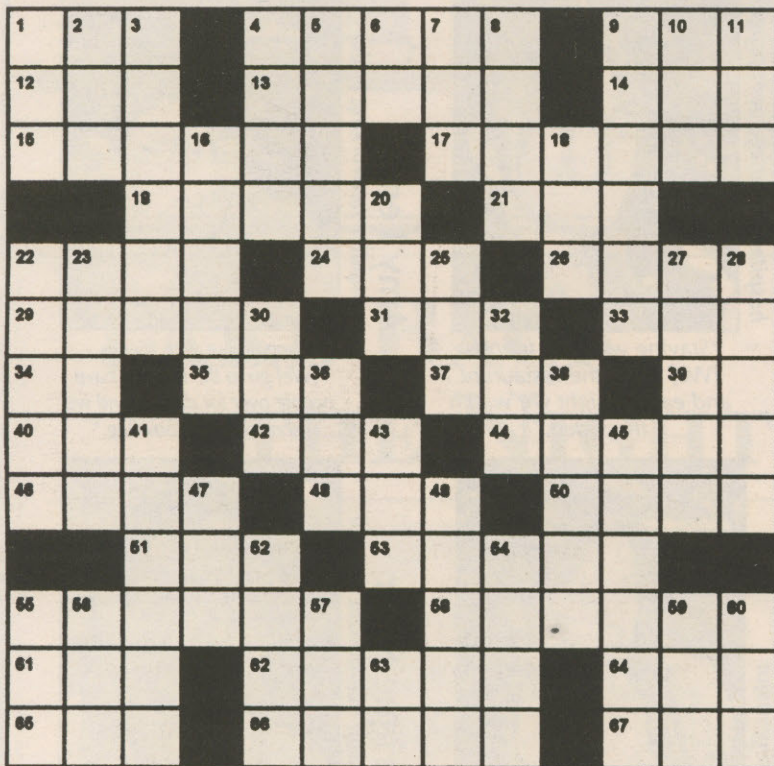
WWW.MARYLHURST.EDU

MARYLHURST UNIVERSITY

Accredited by the Northwest Association of Schools and Colleges
17600 PACIFIC HIGHWAY (HWY. 43)
MARYLHURST, OREGON - JUST 10 MINUTES SOUTH OF PORTLAND
Serving students since 1893.



Crossword Companion



ACROSS

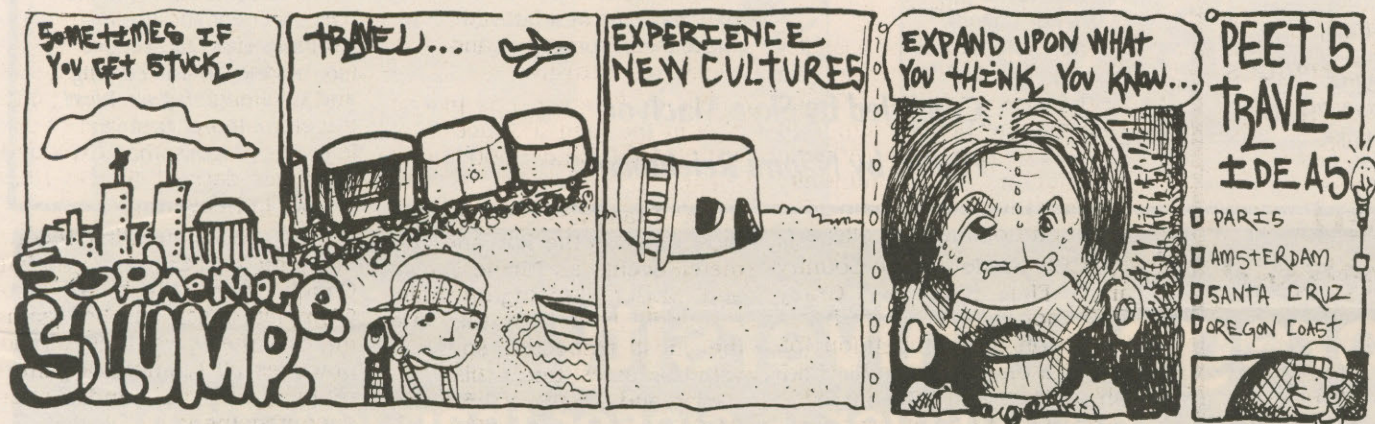
- 1 Fish
4 Begin
9 Wipe
12 Gershwin
13 Mistake
14 Southern constellation
15 Give
17 Bloc
19 Liver
21 Animal
22 Waste allowance
24 Water barrier
26 Owe
29 Most unusual
31 Drifter
33 Daughters of the Amer. Revolution (abbr.)
34 Public announcement (abbr.)
35 Newspaper (slang)
37 School of whales
39 Concerning
40 Pad
42 Fuel
44 Craggy
46 Baby carriage
48 Food

- 50 Russian newspaper
51 Hit
53 Congeals
55 Larger
58 Full of conceit
61 Summer drink
62 Derived from the sun
64 Edu. group (abbr.)
65 Mole
66 Josh
67 African antelope

DOWN

- 1 El
2 Mouth (comb. form)
3 Risk
4 Bristle
5 Fad
6 Pertaining to (suf.)
7 Extinct bird
8 Lure
9 Dulled
10 Metal
11 Friend
16 Change
18 Color

- 20 Splotch
22 Bum
23 Carries blip images
25 Cup
27 Yelps
28 Cards with threes
30 Cloth
32 Scar
36 Hole
38 Slogan
41 Goal
43 Pouch
45 Framework
47 Magazine (Inf.)
49 Requests
52 Heckler
54 Fairy tale monster
55 Ban
56 Lupino
57 Fish eggs
59 Japanese coin
60 19th Greek letter
63 Musical note



Last Week's Answers

F	E	W		D	A	N	E		O	L	D	S
A	R	A		O	B	O	E		C	O	A	T
R	E	T	I	R	E		R	A	T		T	O
		S	T	Y		H	I	M		S	E	W
S	H	O	E		G	E	E		G	O		
A	I	N		B	A	R		B	E	L	O	W
I	D		C	A	R	E	F	U	L		R	A
D	E	C	O	Y		T	I	N		P	A	N
		A	T		D	I	N		W	E	L	T
L	A	W		T	A	C		S	E	T		
O	R		S	I	N		O	T	T	A	W	A
D	I	A	L		C	O	D	E		L	E	G
E	D	D	Y		E	D	E	N		S	E	E

Classifieds

Services

• Tennis lessons available from experienced, patient player. Low rates. Please call Jimmy at 242-0551.

Messages

• The Working Class Student Union meets Thursdays, noon to 1 p.m., Building 1, Room 212. Call 344-5573.

For Sale

• '97 Mustang. V6, standard, 50,000 miles, asking \$11,000. Lots of extras, very well maintained, 782-2361.

• Memorex VCR. New, cost \$75, sell for \$40. Also older VCR, \$20. Call 681-7809, leave phone number.

Events

• International Student office is sponsoring sports day and potluck. Come join us! Sign up at ISCP office Building 1, Room 201B.

Spring Term Final Examination Schedule

For the week of June 10 - 15

To find exam time, find the day, then the time the class is held

Class Days: MWF or M, W, F, MW, WF, MTuWThF, MTuWTh, MWThF, MTuThF, MTuWF

Class Days: TuTh or Tu, Th, TuWThF

<u>Class starts at:</u>	<u>Exam Day:</u>	<u>Exam time:</u>	<u>Class starts at:</u>	<u>Exam Day:</u>	<u>Exam time:</u>
7:00 a.m. or 7:30 a.m.	F	7:00-8:50 a.m.	7:00 a.m. or 7:30 a.m.	F	9:00-10:50 a.m.
8:00 a.m. or 8:30 a.m.	M	8:00-9:50 a.m.	8:00 a.m. or 8:30 a.m.	Tu	8:00-9:50 a.m.
9:00 a.m. or 9:30 a.m.	W	8:00-9:50 a.m.	9:00 a.m. or 9:30 a.m.	Th	8:00-9:50 a.m.
10:00 a.m. or 10:30 a.m.	M	10:00-11:50 a.m.	10:00 a.m. or 10:30 a.m.	Tu	10:00-11:50 a.m.
11:00 a.m. or 11:30 a.m.	W	10:00-11:50 a.m.	11:00 a.m. or 11:30 a.m.	Th	10:00-11:50 a.m.
12:00 p.m. or 12:30 p.m.	M	12:00-1:50 p.m.	12:00 p.m. or 12:30 p.m.	Tu	12:00-1:50 p.m.
1:00 p.m. or 1:30 p.m.	W	12:00-1:50 p.m.	1:00 p.m. or 1:30 p.m.	Th	12:00-1:50 p.m.
2:00 p.m. or 2:30 p.m.	M	2:00-3:50 p.m.	2:00 p.m. or 2:30 p.m.	Tu	2:00-3:50 p.m.
3:00 p.m. or 3:30 p.m.	W	2:00-3:50 p.m.	3:00 p.m. or 3:30 p.m.	Th	2:00-3:50 p.m.
4:00 p.m. or 4:30 p.m.	M	4:00-5:50 p.m.	4:00 p.m. or 4:30 p.m.	Tu	4:00-5:50 p.m.
5:00 p.m.	W	4:00-5:50 p.m.	5:00 p.m.	Th	4:00-5:50 p.m.

Evening (5:30 p.m. or later) and Weekend Classes: Examinations scheduled during regular class times.

This schedule does not apply to Downtown Business Education Center Classes

The Pulse

What is your favorite Saturday night activity?

Oliver Schaal
undeclared major



"Weekend trips to Seattle — I go on retreats with the church [St. Mary's Catholic Church]."

Taj Gadani
aviation maintenance program



"Movies — like mystery movies. I watch them with friends."

Kanako Waguri
hospitality management program



"Staying with my friends. [We] go to the restaurant and eat. At night we watch the video."

Amy Lenz
computer networking major



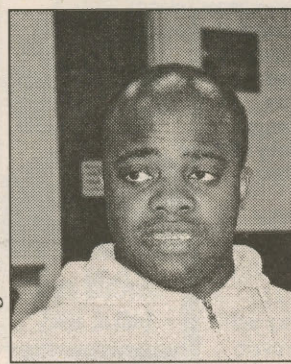
"Hanging out with friends. ... [We] go to the movies, have people over for dinner [and we] sometimes go bowling."

Josh Wilson
general studies



"My favorite Saturday night activity is getting together with group of friends and role playing. ... Often some pretty bizarre and interesting things happen in the games, and I enjoy that."

James Kwame Minta
taking art classes



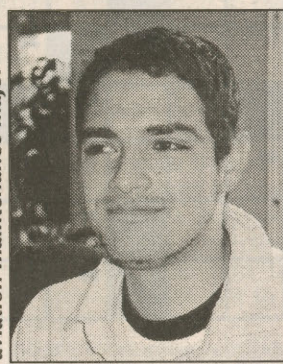
"Dinner at [my friend] Carol's."

Dara Davey
nursing major



"Dancing at Diablo's. They have the best house music there, sometimes."

Enrique Solar
aviation maintenance major



"That would be going to the movies. ... If you like foreign movies, you should see a Mexican one coming out [on video] this weekend ... 'Y tu Mama Tambien' ('Your Mama, Too')."

Compiled by Skye MacIvor

Photos by Naomi Reichman

southern oregon university

the answer is closer than you think.



What's next? If you're looking to complete a four-year degree, do graduate work or just take a few courses, you won't have to look far. Southern Oregon University in Ashland offers a range of excellent undergraduate and graduate degree programs in the liberal arts and sciences. With SOU's small class sizes, your professors get a chance to work closely with you and help you succeed. You'll get the education you want, in a welcoming atmosphere that works with your life — whether you commute, live in the residence halls, or take advantage of our family housing and childcare programs. And when you need a break, take your pick of fun, from great cultural events in downtown Ashland to outdoor adventures in the natural beauty of southern Oregon.

Transferring from an Oregon community college? Find out which courses are equivalent, credit for credit, to those offered at SOU by going to www.sou.edu/admissions/equivalency/index.html or call 1-800-SOU-1025.

www.sou.edu

what's next.



SOUTHERN
OREGON
UNIVERSITY

Choose from these and other SOU areas of study: Accounting • Art • Athletic Training • Business • Communication • Computer Programming and Software • Computer Science • Criminology • English • Environmental Studies • Health Promotion and Fitness Management • Hotel, Restaurant, and Resort Management • Journalism • Marketing • Pre-med • Psychology • Spanish • Theater