



Women nab sixth
place in B-ball
tourney
Special pullout section
Pages 5 - 8

Volume XXXVIII, Number 17

Lane Community College

Thursday, March 4, 2004

Locks changed in Media Arts, info sketchy on key thefts

Campus officials
mum on specifics

Travis D. Roderick
News Editor

Coming hot on the heels of the painting thefts of mid-February (see the Feb. 19 issue of the Torch), LCC has again been struck by a burglar, though this one was caught in the act, sort of.

Details are still sketchy, but this much has been ascertained: On Wed. Feb. 25, between 7:20 p.m. and 8 p.m. (Public Safety reports vary), an unidentified Media Arts instructor and an unidentified staff employee walked in on a burglary-in-progress in the Media Arts department, Building 17, Room 112.

The thief was scared off by the intrusion, though not before swiping a set of keys. No injuries were sustained on the part of the college employees as a result of the confrontation.

According to a brief press release to the Torch, the suspect is described as 5'10", approximately 170 lbs. No other identification was reported, as the thief was wearing a "black knit-type ski mask" at the time. A description of the burglar's clothing was not released.

Information on the keys stolen was not released to the Torch, though locks to the amphitheaters on the top floor of the Forum building and to the Media Arts department were changed on Thursday. Initial plans also called for replacing outside locks of Building 18, including to the offices of the Torch, though those plans were ultimately abandoned.

See **THEFT** page 4

LCC to begin replacing fleet with new hybrid vehicles

Initiative plans to reap
both economic and
environmental benefits.

Sasha Forsyth
Staff writer

A growing need to replace LCC-owned vehicles and a desire to make the transition to a higher level of economic efficiency have resulted in the possibility of a purchase of gas-electric hybrid vehicles by Lane Community College.

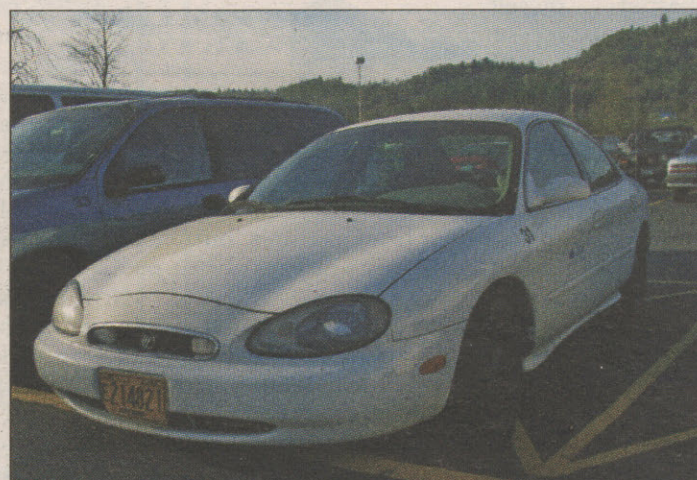
Interested in more recycling, more responsible use of chemicals and better energy management, the LCC administration has recently begun exploring alternative technologies such as the hybrid vehicles because of their increasing affordability.

"It's kind of a no-brainer," said Marie Matsen, vice president of college operations.

According to Matsen, the college hopes that this first hybrid vehicle purchase will be part of a larger effort in the future to purchase only hybrids. "I want this to be a larger plan of eventually replacing the entire fleet," she said.

Hybrids are gas and electric-powered motor vehicles, meaning they produce less harmful fumes than completely gas-powered counterparts. Once well above the spending limits of many consumers in the market for a new vehicle, hybrids are now often only \$1,000 more expensive than similar traditional-engine models.

Hybrids achieve savings by being able to recover energy and store it in the battery, as well as turn off the gasoline engine (which kicks in after the vehicle



One of the LCC motor pool cars, a 1997 Ford Taurus with 91,000 miles on it, may soon be replaced by a more efficient gas-electric hybrid Toyota Prius.

Photo by Megan Wilson



Prius photo courtesy of Toyota.com

reaches 15 miles per hour) when the vehicle is stopped. Hybrids also typically use advanced aerodynamics to reduce drag and use low-rolling resistance tires. Also found in hybrids are lightweight construction materials which reduces the overall weight of the car to increase the gas mileage.

The two vehicles under consideration by the college are the Toyota Prius, which would replace a sedan now in operation, and the Toyota Al-

phard, which would replace a current minivan. The Prius has a manufacturer's suggested retail price of \$20,510. No price information was available on the Alphard.

It is standard for the college to replace a fleet vehicle once it has exceeded 100,000 miles. New vehicles are purchased largely with the revenue generated by charges to staff for use of

See **FLEET** page 12

OSPIRG makes plans for a cleaner Willamette River



Photo courtesy of David Kurushima

Springfield City Councilor John Woodrow spoke at the State of the Willamette Address held at Alton Baker Park Feb 21 to help raise awareness concerning the excessive amounts of hazardous chemicals in the Willamette River.

The eco-friendly plan includes larger penalties for pollution to fund a cleanup crew.

Miranda Broadbent
Staff Writer

OSPIRG is working to raise awareness concerning the excessive amounts of hazardous chemicals in the Willamette River and the local chapter is involved in the campaign.

The group has been working towards a clean Willamette for a couple of years. In 2002, it was successful in getting Oregon Governor Ted Kulongoski to pledge to clean it up.

"Right now, over four million pounds of toxic chemicals are dumped in the river each year," said Courtney Anglin,

an intern for OSPIRG. "That includes PCBs, dioxins, arsenic, lead, pesticides. They're all in the river at levels that well exceed EPA guidelines and all of them are known to cause cancer and birth defects."

In Eugene, problems with processing raw sewage have led to the dumping of raw sewage into the Willamette, according to Anglin.

OSPIRG developed a three-pronged plan and presented it to Kulongoski during the gubernatorial campaign in 2002.

The plan called for reducing the amount of toxic emissions currently going into the

river, making the polluters pay larger penalties when they break the law and having stronger enforcement of the clean water laws already in place.

The idea behind the plan was to allow the money collected and used for a cleanup fund. It is not known how much money the cleanup fund would generate.

Currently, OSPIRG is working to raise public awareness about the issue. OSPIRG hopes to increase the support of the public by getting the governor to make good on his promise.

The group held an awareness event in late February at Alton Baker Park. According to Anglin, the rally was attended by 114 people.

INDEX

OPINION	2
AGE	4
B-BALL TOURNEY	5
HONOR ROLL	9
TILT	11
FINALS SCHEDULE	12

WEEKEND WEATHER

Mostly Cloudy
chance of
showers
55/42



Mostly Cloudy
55/43

Coming next week:

Further info on
burglaries to be
divulged. Stay tuned.

OPINION

Damned if I do, Bushed if I don't

Pundit weighs his options on the Anybody But Bush ticket.

Dear readers, I'm in a bind. Some of you may recall my musings from way back in October in which I lambasted the two-party system because it encourages voters to let their fears, rather than their hopes, sway their decisions at the polls. I still hold those beliefs, I really do, but I'm afraid I'm being led down a path to vote against Bush, rather than voting for anybody.

Come November, when I'm standing in front of the new electronic touchscreen voting machines, waiting for Max Headroom to tell me not to worry, that my vote will be counted, the only certain outcome is that I will not have consciously voted for Bush. In all likelihood, I'll have voted for whomever has the greatest chance of beating him.

Point blank: Even if Ghandi were to fall to Earth and declare his nomination with Mr. Rogers as his running mate – promising an end to wars, universal health care and friendly neighbors for everyone, I'd still only vote for him if he could beat Bush.

I voted for Nader last round because I agreed with his priorities, but also as a protest vote against the ever-increasing moderate stances taken by the Democratic Party. This year,

however, I can't see myself repeating my own history. I won't blame

Bush's second term on those who choose to vote their heart's desires, but I most likely won't be one of them.

Even before his recent emergence as a third alternative in this year's presidential election, however, I questioned whether or not I could, with a clear conscience, vote for a Democratic candidate with whom I did not agree on many issues.

I know the Democrats are still in the midst of their primaries, and therefore a lot of this column is supposition. But let's face it, Kerry's looking well ahead of the pack at this point.

Quite frankly, Kerry bothers me. Not any more than any of the other serious contenders for the Democratic nomination, mind you (note that I said serious contenders; Kucinich

doesn't count), but since Kerry appears to be the Dems' choice to do battle with Bush in November, I have no choice but to single him out.

Dean was always slightly off-kilter to me, media darling or not. I wasn't surprised to see him replaced once the actual primaries got under way, if only because I think the Midwest likes

to point out that the voters choose the candidate, not the media.

Now that Kerry has replaced him as the frontrunner, and therefore soaks up the lime-light accordingly, I find a lot to disagree with him about.

He voted to give Bush the power to go to war with Iraq, yet now declares how much he feels the President screwed it up (can't argue with that point). Hindsight is 20/20, and while a willingness to admit mistakes is a good thing (right, Martha Stewart?), Kerry hasn't admitted a mistake. He claims that had he been president, the war would have run much smoother. This implies he would have gone to war regardless.

Also, he has no plans to

make any drastic changes to our current Iraq policy, leaving our imperialism intact. Not policies I'd like to vote for.

Kerry opposes gay marriage, something I'm for. His stance isn't shocking; out of nine initial candidates for the Democratic nomination, only three actually supported the idea.

However, Kerry is okay with civil unions. He claims this is the reason he would vote against a Republican-led charge to introduce a Constitutional amendment defining marriage as a union between a man and a woman.

Good for him, but at the same time, he says he "might" support a state amendment banning gay marriage in his home state of Massachusetts, "If it were worded correctly." I'm not a fan of hypocrisy. Strike two for Kerry.

Further, Kerry was in strong opposition to the U.S. signing onto the Kyoto Treaty, yet as soon as Bush backs us out, Kerry's on the attack. He has an awful habit of interrupting when he's being asked a question, and tends to answer in

very indignant tones. He runs from the word 'liberal' if you throw it at him. Somewhere in there, I'm looking for strike three. I'm just not sure which one it will be.

I've always hated that term "lesser of two evils." Whichever you choose, your choice is evil.

And yet, surprisingly, Kerry will most likely end up getting my vote this November. It's called the Anybody But Bush ticket,

and a surprising number of voters on all sides of the political spectrum are scrambling to get on board, myself included. I just can't say I'll feel very good about my commitment to democracy when I pull that lever (or touch that flickering screen) and walk away with mixed emotions.

I've always hated that term "lesser of two evils." Whichever you choose, your choice is evil. I still believe democracy is about voting one's hopes, not one's fears. Hopefully, one day we'll be have a choice between the "greater of two goods." But I won't hold my breath.

I still wonder if a write-in vote for the Ghandi / Mr. Rogers ticket might not be my best bet.

Letters to the Editor

Keep it up, Mayfield

Liz, you have no need to wave your white flag! I personally didn't get the pleasure of reading the article on "Metrosexuality," but I do enjoy most of what you have to say. I am really bothered that the QSA attacked you. I mean come on, if the QSA is a group looking to promote tolerance and acceptance of homosexuality in a culture that was built on the premise of a man and woman being the definition of a "normal" couple, don't you think that they too should be able to express this same tolerance and acceptance?

I believe that this whole thing is ludicrous. Whatever happened to the age-old saying: "Sticks and stones may break my bones, but words will never hurt me." Seriously, tolerance begins with the ability to tolerate and acceptance begins with the ability to accept. To promote tolerance and acceptance of homosexuality you must have the ability to accept and tolerate anyone and everyone for who they are and for what they have to say, no matter what the situation.

By calling people "gay bashers" and pointing fingers at people who hold different views and lifestyles they are being hypocritical, plain and simple.

P.S. I'm a little rough around the edges.

Cory Elgin
LCC student

Torch Opinion Poll

Do you have something to say about controversial Torch columnist Liz Mayfield but don't want to go through the hassle of writing a Letter to the Editor? Take a minute to respond to the Torch Opinion Poll.

Question

How do you feel about Mayfield's opinions?

- A. I disagree with all of the opinions I've read so far.
- B. I disagree with many of the opinions I've read so far.
- C. I agree with many of the opinions I've read so far.
- D. I agree with all of the opinions I've read so far.
- E. I have no opinions on Mayfield's column.

Please send your responses via e-mail to torch@lanecc.edu. And, as always, Letters to the Editor are welcome.

Matchmaking during spring holidays

March comes in or March comes out. A big cat is also your cat.

In a St. Patrick's Day cartoon, Travis is wearing green pants and has green hair. He comes from a green world in cold outer space.

In another cartoon, Sean goes back to bed and picks up chicks. Upside down pie on your face makes a very good green photo.

Sunday, April 4 is daylight savings time. Set your clocks ahead one hour on Palm Sunday. Forget Saturday night to set the time ahead one hour and go to bed.

April 11 is Easter Sunday and four days later is the income tax deadline. Don't forget.

Travis kisses a big cat. He loves his cat. Travis, marry your lady friend. Take care of your cat and kiss your wife.

Go to the Student Resource Center. More students are in a very good mood because they drink pop or coffee and good food snacks.

Time goes on in the future.

Editor's note: John Mackwood is a G.E.D. student at Goodwill in Springfield. John writes his column with the help of a Torch editor.



MACK WORLD

John Mackwood
Columnist

THE TORCH

The official student-managed newspaper of Lane Community College is published every Thursday

Submission Guidelines

Letters to the editor should be limited to 250 words. Commentaries should be limited to 750 words. Please include the author's name, phone number and address (address and phone number are for verification purposes only and are not for publication.) The editor in chief reserves the right to edit letters and commentaries for length, grammar, spelling, label, invasion of privacy and appropriate language.

Editorial Board

Gabe Bradley..... Editor in Chief
Liz Mayfield..... Managing Editor
Travis D. Roderick..... News Editor
Shawn Miller..... Sports Editor
Melissa Vandever..... A&E Editor
Trisha Lewis..... Asst. A&E Editor
Megan Wilson..... Photo Editor
Sean Hoffman..... Asst. Photo Editor
Maria Lance..... Production Manager
Noah Rademacher..... Asst. Production Manager

Advertising Manager
Shannon Browning

News & Editorial Adviser
Frank Ragulsky

Production Adviser
Dorothy Wearne

Printed by
Western Oregon Web Press

Contact Us

Editor in Chief 463-5655
Newsroom 463-5881
Production 463-5109
Advertising 463-5654
E-mail: torch@lanecc.edu
Mail: The LCC Torch,
Bldg. 18 Rm. 218
4000 E. 30th Ave.
Eugene, OR 97405

If your car is in the parking lot, go ahead and

Kick yourself.

*Long lines. Frequent back-ups. Jockeying for a parking space.
Not cool.*

*However, if you take for-credit classes at LCC Main Campus,
you can get a Bus Pass from LTD, no charge.*

Awesome, huh?

Two ways to get your pass:

■ **Pick up a Spring Term Sticker!**

Use your bus pass for the first week of classes.

*You'll need your LCC Bus Pass with current term sticker
to ride for the rest of the term. (For spring term, you must
have your new sticker by April 10th, 2004.) Stickers available
April 5th - 9th, 8 am to 5 pm, Building 19, Room 117.*

■ **Get an LCC Bus Pass:**

*Bring your current photo ID and ExpressLane schedule
to an LCC photo session on March 23rd, 29th or 30th,
8:00 am - 7:00 pm.*

Don't qualify?

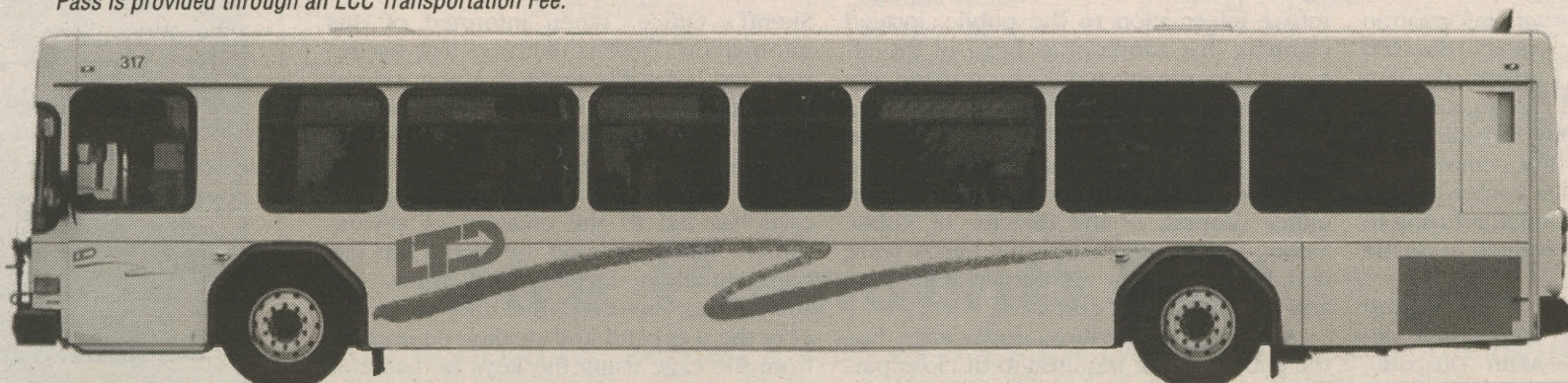
*There is a special discount pass
available for you too, just \$54 a term!*

See www.ltd.org for more details.



Lane Transit District
at your service

*
Pass is provided through an LCC Transportation Fee.



687-5555 Guest Services

ltd@ltd.org E-mail

www.ltd.org Internet

800-735-2900 TTY - OR

ARTS & ENTERTAINMENT



Photo by Melissa Vandever

The Coffee Grove, a community-oriented coffee shop in Cottage Grove, is run by seven LCC co-op members. They offer tasty treats and drinks, many of which are made by local companies.

Cottage Grove community coffee house supports local businesses, artists, entertainers

The Coffee Grove gives year-old business a social and environmental spin.

Melissa Vandever
A&E Editor

The Coffee Grove Cooperative has been open for almost a year now and espresso machines are still dripping and steaming away successfully.

In a booth near the back, LCC Co-Op Ed. Faculty Larry Scott sips a caffeinated beverage while listening to the evening's performer and working on Coffee Grove paperwork.

Scott is one of the seven co-op members who run the Coffee Grove, which opened in July 2003.

"Coffee shops are an icon, a child of the '60s, a center of creativity and art, a place where people come to share ideas," Scott said. "Today we are bent on isolation. We live in suburbs and seal ourselves in little metal boxes to go to and from work. We have lost a part of the social aspect of our society."

Scott explains that centers of socialization, such as coffee houses, are very important because society is becoming

increasingly impersonal.

Besides serving quality coffee and providing a social atmosphere, Scott and the other co-op members are trying to run the Coffee Grove with a community-friendly philosophy.

"We support local businesses and the community by buying locally whenever we have the option," Scott said. "We can't get everything locally but we buy from local farms and bakeries whenever possible."

Although the Coffee Grove must sometimes look outside the community for supplies, such as coffee, Scott explained that organic, environmentally and socially responsible products like Shade Grown, Fair Trade and Café Mam are used.

"We do things for community-related purposes. Corporate decisions tend to be driven by bottom line, which is good for economics and business but can be bad for the environment and community," Scott said. "In corporate systems, people are basically just another resource, and because of that, I don't feel corporate structure is being managed correctly. People need to benefit from their work."

"This is a way of trying to carry on a business and use a very different model to do it, a system that is not totally bottom-line driven," Scott said. "We are working

in terms of environmental, economical and human sustainability."

Another way the Coffee Grove is trying to be community-oriented is by supporting local artists. On Friday and Saturday nights, artists from Eugene and Cottage Grove perform at the Coffee Grove.

"It gives previous musicians a chance to get back and new performers a chance to link up and make connections," Scott said.

Besides musical performances, the Coffee Grove has recently started having micro-cinema nights.

"Micro-cinema is about promoting amateur movie/video makers and presenting documentaries not necessarily seen on TV or in Hollywood," Scott said.

The Coffee Grove's next micro-cinema event, "The Weather Underground," will be on Mar. 10 at 7 p.m. The film is a 90-minute documentary about a violent group that plotted to overthrow the United States government in the '60s and '70s.

Scott hopes to arrange an LCC micro-cinema night for students in the film department.

The Coffee Grove is located at 510 E. Main St. in Cottage Grove. Hours are Monday-Thursday from 7 a.m. to 4 p.m. (or later if there is an event) and Friday-Saturday from 7 a.m. to 11 p.m.

A&E Calendar

March 4

Symphonic Band Concert: Begins at 7:30 p.m. in Building 6, Performance Hall. Suggested donation is \$4-\$6. For more information contact Myrna Seifert at 463-5161 or the Ticket Office at 463-5202.

March 9

Chamber Choir and Concert Choir: Begins at 7:30 p.m. in Building 6, Performance Hall. Suggested donation is \$4-\$6. For more information contact Myrna Seifert at 463-5161 or the Ticket Office at 463-5202.

March 10

Student Shakespeare Recital: Begins at 7 p.m. in Building 6, Blue Door Theatre. For more information contact Judith 'Sparky' Roberts at 463-5647 or 686-9781.

March 12

Jazz Band and Spectrum Vocal Jazz Choir: Begins at 7:30 p.m. in Building 6, Performance Hall. Suggested donation is \$4-\$6. For more information contact Myrna Seifert at 463-5161 or the Ticket Office at 463-5202.

Fighting Anti-Semitism Workshop: This workshop will be offered in two three-hour sessions: Friday, Mar. 12, from 1:30-4:30 p.m., and Monday, Mar. 15, from 1:30-4:30 p.m. in Building 5, Room 206. To register, call 463-5852. For more information contact Jim Garcia at 463-5852 or garciaj@lanec.edu.

Ongoing

"Enjoy it While it Lasts!" Studio Assistant Show: The show features sculpture by Kate Ali and ceramics by Rowan Means and continues through Mar. 18. The LCC Art Gallery is located downstairs in Building 11. Hours are 8 a.m. to 8 p.m. Monday through Thursday, and Friday from 8 a.m. to 4 p.m. For more information contact Ali at 463-5778.

THEFT from page 1

When asked for further information on the incident, Public Safety directed all questions to Patrick Lanning, division chair for Art and Applied Design, amongst other departments, thereby including Media Arts. Lanning would not comment on the issue, citing concerns of compromising the investigation. This included refusing to name the individuals that walked in on the attempted burglary.

Building 17, Room 112 is the lockup room, or "cage," of the Media Arts department and office to Alain Despatie, information technology technician and responsible for equipment checkout. When asked for information, Despatie told the Torch that he had been directed by Public Safety to not answer any questions on the issue.

Officer Weldon D. Perkins denied that orders had been issued by Public Safety to

refuse information to the public, instead claiming that Lanning, as head of the affected department, would have made any such decision on the matter.

Perkins also claimed that he "would be happy" to release more information to the Torch, but that without approval from either Lanning or the director of Public Safety, Sandra Ing-Wiese, his hands were tied. Ing-Wiese was out of town at the time and unavailable for comment.

According to Perkins, under state law the college is not required to disclose particulars about a crime, other than the information required kept under the Jeanne Clery Act of 1990: date, time, location and type of crime committed. This information was all available for perusal in the public crime log kept by Public Safety.

As of Tuesday, Mar. 2, an official report had not been filed with the Lane County

Sheriff's Office. When informed of this information, Perkins declared that the report had indeed been filed. Upon second inspection, however, he realized that the official report had not been filed; this was to be rectified immediately.

The lack of solid information on the case has led to the creation of several rumors floating around the Media Arts department among faculty and students. One such rumor involved the thief returning over the weekend and stealing equipment from the cage using the keys he had stolen earlier; another rumor claimed that the thief already had keys to the cage, implying an inside job.

Both rumors were officially debunked. Individuals with any information on the events of the night in question are urged to contact either Public Safety at 463-5558, or the Torch at 463-5657.

Your help is needed.

Stolen Artwork

On Friday, Feb. 13 between 3-4:15 p.m., three pastel paintings by James E. Ulrich were stolen from the LCC Art Gallery. The titles of these paintings are: Fool's Arrival, Fool's Search and Journey of the Heart.

There is a reward for their return.

No questions asked.

463-5409 or 554-9932

Shamrock Village RV PARK

Close to college on LTD bus route.

\$275 plus electric with laundry and showers.

Study by the river.

541-747-7473 Restrictions apply.

NWAACC SPORTS



Titans place sixth at NWAACCs

The Titans easily win in first two rounds before losing twice to league opponents

Stories by Shawn Miller
Photos by Sean Hoffman

Titans roll past Spokane

To open the NWAACC tournament, the Titans faced the third seed out of the East region, the Spokane Sasquatch. Lane defeated Spokane by 11 earlier in the season and while realizing both teams had grown quite a bit during the season, Head Coach Greg Sheley noted that he clearly believed that if the Titans played hard, they would come out with a victory.

"We are going to have to be really bearing down on defense," said Sheley. "If we can put some pressure on them and get some easy buckets, it is definitely a game we can win."

Sheley was dead on, as Lane held Spokane to 22 first-half points. Boxing out led to a 24-15 rebounding edge and good communication and quick feet helped force the Sasquatch into shooting only 32 percent from the field.

"Even though we knew we were

the better team, we had to go in there and work hard," said sophomore LeeAnn Genovese, who led the Titans in the first half by scoring eight points and grabbing six rebounds.

Sophomore Chelsey Brock opened the second-half by scoring the first eight points.

Lane continued its defensive dominance by holding Spokane scoreless for the first 4:40. However, in every game each team makes runs and Spokane started a 7-0 run to cut into the lead.

Freshman Ashley Sequeira answered with a lay-up on the Titan's next trip down the floor and four minutes later, Sequeira stopped another Spokane run with an ahead of the pack fast break lay-up to give the Titans a 48-33 lead with 11:46 remaining.

Brock and Sequeira carried the Titan offense by scoring all but seven of the second-half points.

Freshman point guard Domonique King put the game away with five points in a span of 34 seconds in the closing minutes and the Titans walked away with a 68-53 win.

"My goal was just to win," said Brock, who tallied a game-high 25 points and four steals. "All I know is that I was pumped."

Sequeira recorded a double-double, scoring 15 points and grabbing 12 rebounds.

While free throw attempts and makes, fouls, assists and turnovers were nearly identical for both teams, defense was the key as Spokane was held to 31 percent shooting, including just 25 percent from beyond the arc. Lane was efficient on offense, making 42 percent from the field, including Brock and Sequeira combining for netting 18 out of 26 shots.

"I think we are going to improve," said Brock. "Our defense is pretty good right now. I think we just need to find the open person on offense."

Game One
Lane Titans 68 --
Spokane Sasquatch 53

The Titan starting five huddled together before the tipoff against Cheme-keta. The game started quickly with Lane scoring at the free throw line on two of its first three possessions.



In Play...

- Sophomore LeeAnn Genovese was selected to NWAACC tournament 2nd team. She averaged 8.8 points and 6.8 rebounds per game.

- The Titans held opponents to an average of 56.3 points per game, the third lowest in the tournament.

- Lane shot 57.1 percent from the three-point line against Lower Columbia, the highest average for a single game in the tournament.

- Sophomore Chelsey Brock ranked 18th in points per game (13.5) and fourth in steals per game (3.0) during the tournament.

- Freshman Ashley Sequeira (8.0) ranked 15th in rebounds while sophomore Kailee Short was 16th (7.8) in rebounds per game throughout the tourney.

- Clackamas defeated Chemeketa for the NWAACC championship, 55-36.

NWAAC SPORTS

#32 Kailee Short

6'1" Forward



From the coach

"She had a great career here. She rebounded, played defense and scored. Coming down the stretch she has really played well."

From the player

"We were more focused on basketball this year. It [being a student-athlete] helped me make friends and with my grades because if you don't pass [classes], you don't play."

STATS

2003-04 Games	FGM	FGA	FG%	FTM	FTA	FT%	PPG	RPG	APG	STLS
30	129	295	44%	71	117	61%	11.0	7.5	0.6	56

#23 Chelsey Brock

5'8" Guard



From the coach

"She stepped up a little more this year. She had to score and defend the good players on the other team."

From the player

"This season was character-building on and off the court. This team has gone through everything and it has helped mold us."

STATS

2003-04 Games	FGM	FGA	FG%	FTM	FTA	FT%	PPG	RPG	APG	STLS
30	144	368	39%	117	146	80%	13.9	3.1	2.2	106

#25 Jenna Cleveland

5'10" Forward



From the coach

"She is awesome for the team. She never complains and works her tail off everyday. She is selfless and wants what is best for the team."

From the player

"I think it has been a great experience. I learned a lot from it and I don't regret anything. All of us have bonded very well."

STATS

2003-04 Games	FGM	FGA	FG%	FTM	FTA	FT%	PPG	RPG	APG	STLS
29	17	53	32%	6	13	46%	1.4	2.2	0.3	18

#24 Jennifer Bell

5'7" Guard



From the coach

"She has had a much-improved season. She is confident with her shot, works hard and wants what is best for the team. This year her production is more."

From the player

"We started out the season down in the slumps, but we came together more as a team. You could tell when we played together as a team the only people that could stop us was us."

STATS

2003-04 Games	FGM	FGA	FG%	FTM	FTA	FT%	PPG	RPG	APG	STLS
29	64	175	37%	13	23	57%	6.3	2.6	0.9	53

#44 LeeAnn Genovese

5'9" Forward



From the coach

"LeeAnn has been a pleasant surprise. She had a great year. If we didn't have her this year, it would have greatly changed the outcome."

From the player

"There is no attitude with this team. I've been on a lot of teams with clicks and we don't have any of those. It [playing basketball] has made the college experience easier. I learned how to work hard and never give up. It definitely builds more character."

STATS

2003-04 Games	FGM	FGA	FG%	FTM	FTA	FT%	PPG	RPG	APG	STLS
26	94	192	49%	51	104	49%	9.2	6.4	0.3	32

SOPHOMORE
Sports Cards

2003 - 2004
TITANS
Women's
Basketball

NWAAACC SPORTS

Strong second half leads to win

The first half of this game would be known as the "Battle on the Block" as both teams worked to establish its inside game. However, shooting close to the basket didn't make the shots any easier, as both teams struggled to put the ball in the hole. The Titans shot just under 43 percent, while Lower Columbia made only 30 percent.

Sophomore Kailee Short scored six of eight Titan points in a span of just under three minutes to give Lane a double-digit lead. The Titans led by as many as 12 in the first-half and Short's 10 points, two steals and a block propelled the Titans to a 30-20 halftime lead.

"I felt a little better," said King about the sickness that plagued most of the Titans. "Sitting out the last eight minutes of the first-half with two fouls gave me a little more energy."

That energy was needed as King established the defensive precedence early by creating turnovers and leading the transition game that the Titans use each game to edge their opponents.

Despite the hustle and fast pace, Lower Columbia still hung around as Lane continued to struggle making shots. With the score 33-28 and just over 12 minutes remaining, Short nailed a jumper, followed by Brock netting a jump shot on the next possession and King scoring four points in less than a minute to gain a more favorable score for the Titans.

"I just think that defense is our key," said freshman Kellie Griner, who scored nine points, with three assists, three steals and three rebounds. "I think what really helped us out offensively was that we made the open pass."

The play of the game, or better phrased "moment of the game" came when Brock laced a pass to a cutting King for a layup from the left side, which was followed by Brock hitting an open King for a swooping layup and foul, which extended the lead to 24 for the Titans with just over four minutes to play.

Lane held Lower Columbia to 38 points and scored 67 of their own to advance to the semifinals against league-rival Chemeketa Community College. Fellow league opponents Umpqua Community College and Clackamas Community College advanced to the other semifinal, to create an all-Southern region semifinal.

Our defense was really good holding them down," said Sheley. "We had goals and objectives, we knew their strengths and weaknesses; as a team we played good defense."

King led the Titans with 15 points and Short scored 14 points with six rebounds. Brock added nine points, six rebounds and five assists.



"Lane hasn't won a second-day game and we wanted to make it a clean sweep for the Southern region," said King, referring to motivating factors to win.

Game Two Lane Titans 67 — Lower Columbia Red Devils 38

Lane falls in semifinals

Disappointment. That is in essence a feeling that Lane felt after their loss on day three to Chemeketa. In a game that both teams felt they would win, shooting was a key.

Defense was solid for both sides, while offense was ugly. To say it was ugly is actually being kind. Both teams shot less than 37 percent from the field. The Titans went through two scoreless spells for a period of almost five minutes twice, once each half.

"There is always something about Chemeketa," said Brock. "They always seem to play their best game against us."

King guided Lane by scoring 11 first-half points. She started the game with three free throws and halfway through the first half, worked with Brock to score 12 out of the final 14 Titan points.

The stats at the end of the first half were amazingly similar. Points: Titans down by two. Rebounds: the same. Fouls: Titans with one more. Turnovers: the same. Free throws: Titans 5-10; Storm 6-10. Field goals: Titans 8-28; Storm 9-28.

"We held them under 30 points at halftime, which is one of our goals," said Sequeira. "It [our problem] was definitely offensive. You can't win games unless you score."

The second half started with Brock hitting a jumper. Then three minutes without scoring

before sophomore Jennifer Bell drilled a triple to cut the lead back down to five. The next two minutes belonged to Genovese, who scored five points and kept the Titans battling on offense.

Bell banked a three-pointer and Genovese put in a tough five-footer, followed by three Lane free throws to bring the score to 42-40 in favor of Chemeketa.

That is when the offense went cold and the defense couldn't stop Chemeketa on every possession. Four minutes and 25 seconds later the Titans trailed by 10 and the clock had fallen below six minutes remaining.

Lane battled, but was unable to get any closer than eight points before falling 62-47.

In the final 10 minutes of the game, the Titans scored just seven points, while allowing 20 to the Storm.

"I don't think it was necessarily defense," said Sheley. "We were stagnant on offense. We'd throw it [the ball] away. I just wish we would have competed harder."

Genovese scored 14 points and added seven rebounds. King had 13 points, shooting 7-10 from the free throw line and dished out five assists. Sequeira had a game-high 11 rebounds and two blocks.

"Third place is better than sixth place," said Sheley. "It's tough to bounce back after a semifinal loss."

"Some groups you can challenge. You've got to pick and choose your challenges with this group. I don't think this is a time to do it. They have to go out there and do it. To be honest, I don't know what team is going to show up."

Game Three Lane Titans 47 — Chemeketa Storm 62



Sophomore LeeAnn Genovese battles for position in the key. Genovese was named Second Team all-NWAAACC for her efforts during the tournament.



Right: Sophomore Kailee Short leaps for the jump ball to start the game against Umpqua. Short averaged eight points and eight rebounds during the tournament.



Left: Freshman Kellie Griner pulls up for a jump shot against Umpqua. Griner had six points in the first-half to pace the Titans.



Ashley Sequeira and Spokane defender Julia Abersfeller battle for rebound position in the Titans first round victory. Sequeira pulled down 12 rebounds and scored 15 for a double-double.

NWAACC SPORTS

Sheley expects success on and off the court

Three-strait top
seven tourney finishes
isn't what defines
Titan's head coach

Shawn Miller
Sports Editor

Greg Sheley is the best women's coach in the storied history of Titan basketball. That is a bold statement to make considering the company that has paced the sideline.

"That is a tough one," said Sheley, referring to whether he thinks he is the top coach. "In my opinion, I'd say no. It is too early in my career. I may have had the best teams, but I can't say I'm the best coach."

Modest. That is refreshing in athletics where there are out of control egos and salaries. You won't find that at LCC though.

"If you look at numbers, time will tell," said Sheley. "Sometimes your best coaching is with less talent."

Sheley has solid basketball credentials. After high school, he spent two years at Sierra Junior College located outside of Sacramento, Calif., before transferring to Chico State (now known as California State University at Chico) for his final two seasons.

Following his playing days, a coaching career appeared



Head Coach Greg Sheley directs sophomore Jennifer Bell during a timeout against Umpqua. Sheley has guided the Titan sidelines for the past five seasons.

on the horizon. Sheley spent one year at Chico State with the men's program, the next at Butte College, located near Chico, Calif., with the women's team and the following back at Sierra for a one-year stint with the men.

Sheley's longest tenure oc-

curred the following year, when 10 days into the season as an assistant coach at Butte, the head coach resigned and Sheley landed the gig.

"It fell into my lap," said Sheley of the opportunity.

Success was breaded into the program and following seven

years as head coach, Sheley's teams had won three conference titles and went to the state championship twice, advancing one time to the final four. Also, Butte recorded two 30-win seasons and once had the player of the year in the state of California.

Winning was the norm, but there were other things on Sheley's mind besides basketball. He was starting a family and it became important to the Sheley family to be together more often. When searching for a job where Sheley could teach and coach, a little school called Lane Community College "came over the wire" and Sheley decided to "give it a look."

Sheley was hired and five years later has made his mark in the community. Currently, Sheley ranks third in all-time wins (94) and first in winning percentage (63 percent). He is on pace to jump onto second in all-time victories next season and to first place in three seasons.

"It has fulfilled me in the sense that I can teach and coach and get a lot of that done during the day," said Sheley. "I'm not actively looking to go somewhere else. I enjoy coaching and I like where I am."

"If they continue to make it difficult to teach and coach due to budget cuts, that may be a reason [to leave]."

One reason Sheley has had so much success is because he

is recruiting locally. Many people in the communities haven't given Lane a shot before a few years ago, but it finally looks like that problem is turning around.

"The local kids are the first priority, then we look outside," said Sheley.

Just because a player is good and local doesn't make them an automatic recruit either. Sheley holds his players to a high level of success on and off the court and expects them to perform.

"To get quality student athletes, those kids that can do it in the classroom and on the court isn't easy. You've got to take care of business in the classroom to play."

Despite coaching in a college where players only have two years of eligibility before they move on hasn't stopped the program from continuing to rise. The success Sheley has had on the court has been tremendous, but the success off the court might be a better judgment of Sheley.

For now, Sheley will work to sign top recruits and continue to build a program that is growing quickly.

The Titans will take their successful sixth place finish at the NWAACC tournament and next year don't be surprised if they once again finish at the top of the standings at the end of the season.

Consecutive losses place Titans sixth

The challenge was obvious: beat a tough Umpqua team they had faced twice during league play this season to secure the best finish a Lane women's basketball team has placed at the NWAACC tournament.

The Titans didn't play up to the challenge early, falling behind 0-10 only 1:39 into the game. When they finally managed a couple of baskets, Umpqua was drilling its jump shots and halfway through the first-half, the score was Umpqua 23, Lane 11.

The four minute mark seemed to be a spark for the Titans as they rattled off a couple of jumpers before Brock nailed a jump shot with 31 seconds to go and King went coast-to-coast with four seconds remaining to cut the score to 26-28.

The second half started with a Brock layup to tie the game, however, the shooting woes returned and the Titans managed just six points in the next five minutes, while allowing the Timberwomen to jump back to a double-digit lead. Even worse, Lane fell into another drought after cutting the lead back to seven, this time the Titans scored seven points in a span of over 10 minutes.

By that time, Umpqua had developed a 23-point lead and with the clock running under five minutes to play, the Titans hope tasted sour.

Just when the game looked in the bag, Umpqua played its version of 'Girls Gone Wild.' Lane forced turnover after turnover in a pressure defense, which led to a 10-0 run in the time frame of 3:41 to 2:20 remaining. Unfortunately for the Titans, there were no more tricks left in the bag and Umpqua held on for a 72-57 win.

"It's just a tough game to play," said

Sheley. "They [Umpqua] are a very physical team."

"When you shoot a low percentage against a quality team, you need to be able to play good pressure defense."

Despite creating 12 more turnovers and shooting 12 more shots, the Titans shot 26 percent from the field, including only 23 percent in the second-half. Umpqua also made nine three-pointers, out of 23 tries, while Lane managed only 2-14 beyond the arc.

"Our shots weren't falling again and we weren't taking the ball aggressively to the hole," said Brock, who led the Titans with 14 points and five steals.

Short added 13 points and 12 rebounds. Genovese scored 11 points and King had nine.

When asked where Lane failed, King said, "No energy. Then we tried to pull it back together. We went out playing hard though. I'd rather lose playing hard than win and play horrible."

The Titans lose five key sophomores, but the future remains bright for the rising program.

"We are losing key players," said Sequeira. "But this year we proved that you can still lose your key players and have a good season."

"Hopefully we will get a couple of good recruits," said Sheley. "It's time to reload and keep the program going."

Game Four
Lane Titans 57 —
Umpqua
Timberwomen 72



Above: Sophomore Jennifer Bell feels the sting of losing a semifinal game against Chemeketa. Bell nailed five three-pointers during the tournament.



Left: Jenna Cleveland receives conciliatory hugs from her parents after the Titan's third place slips away.

Honor Roll

President's List

The following students have earned a 4.0 or higher for twelve graded credit hours.

The list is sorted by first name due to program limitations beyond our control

Aaron Grimes	Cheryl Stinson	Georgia Richards	Joseph Bosch	Lora Krall	Robin Bassett
Adam Sebold	Chi-Lin Hsieh	Gidget Ross	Joseph Harp	Loyd Fultz	Robin Mulford
Aimee Foreman	Christina Lair	Gloria Gonzalez	Joshua Gagner	Mac Laird	Roderick Williams
Aimee Punches	Christina Marcus	Grant Grubb	Joshua Kielas	Maranda Derby	Rodney Wolverton
Alan Overwater	Christina Tuttle	Greg Hamlett	Joshua Micheli	Marcia Jackson	Rose McMahon
Alejandro Navarrete Jr.	Christina Varble	Gregg Huskey	Joshua Shayla	Marcy Galvin	Rosemary Woodward
Alexander Starke	Christofer Scoggin	Gregory Olaen	Julie Mathey	Margaret Gauthier Marpet	Ross Shimabuku
Alissa Mendonca	Ciara Hall	Halie Smith	Justin Tittelfitz	Marie Carr	Roy Plantz
Allana Ross	Cindy Leland	Harlan Sacrison	Justin Walsh	Marika Farhadi	Russell Quinby
Allison Sinclair	Claudia Cooper	Heather Block	Kaitlin Mead	Mark Bennett	Russell Walker
Allyson Codington	Craig Gee	Heather Schantz	Kale Dawes	Mary Bertram	Samantha Ketcherside
Amanda Evans	Dan Hanson	Helen Shields	Katharin Giles	Mary Brorby	Sandra Maxwell
Amanda Frazer	Danelle Bertrand	Henry Crume	Katharine Gilbert	Maryrain O'Meara	Sandra Scott
Amanda Hatch	Dani Wilke	Hillary Clements	Kathryn Skelton	Matt Robintree	Sara Bissell
Amanda Hochendoner	Daniel Garrett	Hiroko Koketsu	Kathy Zweibohmer	Matthew Knight	Sara Thompson
Amber Beyer	Daniel Papke	Iris Hood	Katie Beckett	Mattias Otto	Sarah Ciampa
Amber Hight	Daniel Prosseda	Isaac Rochester	Keith Albin	Maureen Combest	Scott Bowlsby
Amber Larsen	Daniel Temple	Isaac Walker Stern	Kelli Brooks	Melanie Villafana	Sean Martin
Amber Morley	Daniel Ward	Jack Allen	Kelli Vetter	Melinda Meisner	Shane Brown
Amber Peirce	Danielle Marelli	Jaclyn Krowen	Kelly Barrett	Melissa Larington	Shane Feinstein
Amber Tillett	Darci Nash	Jacob Strouckel	Kelly Deering	Michael Guidero	Shannon Peet
Amy Hall	Darren Canepa	Jacqueline Stone	Kelly Gould	Michael Lopez	Sharin Miller
Andrea Leighton	Darron Houck	Jakeb Prickett	Kelsey Parsons	Michele Suzette	Sharon Myrand
Andrew Dicus	Dave Kingsford	James Bullard	Ken Koblas	Michelle Grassauer	Sharon Olson
Andrew Laing	David Hamor	James Dunham	Kendra Abraham	Michelle Kelso	Shawnee Cox
Andrew Westing	David Mondou	James Gordon	Kendra Doyle	Miles Hollander	Sheila Whelan
Andrew Wilson	David Scott	James Kelly	Kendy Provost	Minori Asato	Shery Wellington
Angela Jaster	Dawn Richardson	James Stover	Kevin Bass	Mirna Toukatly	Sonja Ames
Angela Knighton	Debora Mitchell	Jamie Burkett	Kim SchilleMillier	Molly Shrewder	Stefanie Ortis
Angela Reeds	Debra Johnson	Janet Morris-Fenley	Kimberly Budesilich	Morgan Hager	Stephanie Morelli
Angela Woolhiser	Denise Williams	Janet Zsiga	Kimberly Dayton	Morgan McFadden	Steven Dial
Ashley Sequeira	Dennis Atteberry	Jason Beck	Kimberly Hamrick	Morgan Nilsen	Steven Ledbetter
Aura Jocis	Devi Mears	Jason Hyatt	Kimberly Peterson	Morgan Wilson	Steven Rankin
Autumn Kramer	Dewayne Uphagrove	Jason Lear	Kimberly Stellflug	Nancy Anderson	Steven Rosin
Azure Salvesson	Diane Jessing	Jason Medlock	Kirsten Vaughn	Nate Goldberg	Susan Orr
Ben Donnelly	Diertra Lynn	Jason Parks	Kristen Curtis	Nathan Kirby-Glatkowski	Tamara Bohnstedt
Benjamin Suby	Dondie Welton	Jason Watson	Kristi McCown	Nick Wing	Tammy Werbelow
Blaine Harris	Dorinda Dawes	Jeanette Park	Kristin Heck	Nicole Mundt	Tatum Szerensits
Brandy Edwards	Dustin Gilbert	Jebediah Wilson	Kristin Henshen	Nicole Starkey	Teodoro Contreras
Brandy Goodson	Dustin Smith	Jeffery Smith	Kristopher Rommel	Olof Mattias Jarvegren	Teresa VanBlaricom
Brandy Kephart	Earl Hall	Jeffrey Noblet	Kristy Bailey	Pamela Clark	Tesia Dobrydnia
Breckon Neat	Ed Lackington	Jenell Miller	Kristy Langworthy	Pamela Hatstat	Therese Burchell
Brenda Ogan	Edward Blake	Jennifer Clason	Kristy McMillin	Pamela Johnson	Theya McCown
Brendan Boyce	Eldon Tobiasson	Jennifer Craig	Krystine Watkins	Patience Pontious	Tiel Fox
Brenna Schaefer	Elicia Reed	Jennifer Jones	Kyla Wetherell	Patricia Chamberlain	Tirzah Krabill
Brian Walters	Elizabeth Conley	Jennifer Kavanagh	Kyle McKern	Patricia Hobbs	Tobias Policha
Briana Theroux	Elizabeth Cook	Jennifer Malpass	Larissa Platt	Patrick Fitzharris	Todd Cutsforth
Brianna Anderson	Elizabeth Perkins	Jeremiah Grace	Laura Hatleli-Baker	Patrick Hennessey	Tony Carnine
Brianna Texter	Elizabeth Rafferty	Jeremy Braun	Laurie Cole	Paul Tomlinson	Tracey Adney
Brianna Ward	Elizabeth Wettlaufer	Jeremy Callahan	Laurie Jensen	Peggy Sue McDonnell	Traci Acireno
Bridget Bollinger	Ellie Antico	Jeremy Hawkins	Layla Ulam	Pema Chhophyel	Trava Suty
Briony Walker	Emily Downing	Jesse Grimes	Leala Sears	Peter Jenkins	Travis Manwiller
Britta West	Emily Hamblen	Jesse Ivy	Lee Kendall	Philip Roig	Trisha McNiel
Bryce Landau	Emily Mead	Jessica Davis	Lee Waldahl	Pooja Malakar	Tyler Brown
Brynn McCleary	Emma McDonald	Jessica McReynolds	Leighann Sharrard	Rachel Boost	Valerie Rethwill
Byron Baesler	Ephraim Payne	Jessica Polson	Leroy Briggs	Rachel Cicerella	Valerie Simmons
Cara Darling	Eric Farr	Ji You	Lesley Kelley	Rachel Snyder	Wanda Dixon
Carrie Herron	Erick Weidmann	Jinny McKenzie	Lewis Garchow	Randall Hughey	Wayne Vejrasaka
Carrie Wright	Erik Westerholm	Joan Loschiavo	Lila Bichel	Renee Rigenhagen	Wendy Hubacek
Casey Cooper	Erin Kirkpatrick	Joan Sharp	Linda Adkins	Rhea Keeney	William Clum
Casey Kolendar	Erin Smith	Jodie Lyche	Linda Gurney	Ricky Chapek	William Edens
Casey Krall	Evelyn Elliott	Joel Andrews	Lindsay Weber	Ricky Crawford	William Lane
Cassandra Barnes	Garnet Yeiser	John Butler	Lindsey Affleje	Riley Galt	William Plucker
Cassandra Wood	Gary Forman	John Capehart	Lindsey Bidwell	Robert Caldwell	William Smith
Charleanne Wade	Gary Golden	John Casto	Lisa Stegall	Robert Graham	Winston Tripp
Charles Hoffman	Gayle Ford	John Marshall	Livia Carpenter	Robert Rosenthal	Xiaohong Duan
Charles Xayaveth	Genevieve Rea	Jonathan Timm	Lora Field	Roberta Hawkins	Yuka Garzenelli
Chase Parnell	Genevieve Woodruff	Joni Henderson			

Vice President's List

The following students have earned a 3.55 to 3.99 for twelve graded credit hours.

Aaron Brader	Adrian Salge	Alexander Kahn	Alisha Cunningham	Amanda Wall	Amy Evernden
Aaron Sause	Adrienne Davis	Alexander Purdie	Alissa Coe	Amanda Wooldridge	Amy Hogan
Aaron Smith	Akira Takemoto	Alexander Tulchinsky	Alma Marshall	Amber Morgan	Amy Kookan
Aaron Wilmarth	Alan Trosian	Alexandra Christensen	Alycia Ansell	Amber Pollet Grimm	Amy Luis
Abby Norton	Albert Schloegel	Alicia Teller	Alysen Kaser	Amber Webster	Amy Smoley
Abigail Mace	Alexander Farleigh	Alicia Turner	Amanda Burhop	Amy Donley	Ana Richers
Adam Peer	Alexander Huynh	Alida Gottlob	Amanda Scholze	Amy Ekparian	

HONOR ROLL

Vice President's List

(continued from page 5)

The following students have earned a 3.55 to 3.99 for twelve graded credit hours.

Andre Comandon	Daniel Simonson	Ilona Hyett	Juliana Allen	Meagan Baird	Sarah King
Andrea Kendall	Daniel Van Ordstrand	Irene Rhodes	Julie Baasch	Meagan Dahn	Sarah Nolf
Andrea Peake	Danielle Derham	Isaac Carlson	Justin Barr	Meilyn Louis	Sarah Poe
Andrew Moody	Danielle Fegles	Isaiah Kimball	Justin Stegall	Melinda Geil	Sarah Weikert
Andrew Zaleski	Danielle Wright	Ivan Walker	Justin Van Dyke	Melinda Hernandez	Sasha Riseman
Anne Marie Steinhouse	Danna Griffith	Jacob Brown	Kainoe Sinclair	Melinda Wigely	Satya Chitty
Anthony Barbera	Darcie Missanelli	Jacob Edmonds	Kaleb Jentzsch	Melissa Koch	Savanna Buehler
Anthony Mc Cown	Darlene Martin	Jacob Gunderson	Kalie King	Melissa Rodriguez	Savannah Cobiskey
April Haga	Darrell Betts	Jake Smith	Kanako Waguri	Melissa Swinehart	Scott Corbett
April Sutton	Darrell Olson	James Barker	Kara Compton	Meredith Coelho	Scott Gahan
Ariel Stultz	Darren Brooks	James Buster	Karen Ibach	Meryl Manley	Scott Groeper
Arnel Alarcon	David Barton	James Cady	Karen Lovell	Michael Adams	Scott Hill
Arthur Clements	David Jensen	James Hibdon	Karen Smith	Michael Akins	Scott McIntyre
Arthur Lancaster	David Kile	James McKenzie	Kari Hense	Michael Bassett	Scottie White
Ashley Haines	David Robinson	Jamie Baynes	Kari Imel	Michael Dunaway	Sean Fishback
Ashley Hoffman	David Stelter	Jamie Couick	Karli Muscarella	Michael Moresi	Sean Phillips
Atsushi Hongo	David Thaler	Jamie Prater	Karly Foster	Michael Perez	Sean Shanahan
Aubrey Staat	David Vanderhoff	Jamie Sandoval	Kasumi Akiyama	Michael Smucker	Seth Dawson
Austin Morninweg	Dawn Linder	Jana Warren	Katherine Hanlon	Michelle Kelley	Shams Barnhart
Austin Shepard	Dayne Turpin	Janie Tipton	Katherine Stock	Michelle Minalia	Shane Traetow
Ayako Ishihara	Debbie Murray	Jason Christensen	Katherine Strong	Michelle Romero	Shanna Blank
Aybra Sinclair	Debbie Wilkinson	Jason Coats	Kathryn Binder	Michelle Sharp	Shannon Boyd
Barbara Shreeve	Deborah Bos	Jason Fairchild	Katrina Persson	Micki Merner	Sharleen Nelson Bolkan
Benjamin Darwin	Deborah Fitzgerald	Jazzietoo Januari	Kellie Griner	Mike Woodfin	Sharryl Sosa
Benjamin Garcia	Deborah Randolph	Jean Biase	Kelsey Korpela	Mollie Parris	Sharyn Schneider
Benjamin Jaques	Debra Cameron	Jean Rogers	Kelsey Pollard	Mollie Treadwell	Shawn McKenzie
Benjamin Lyddon	Dena Kemmis	Jeanine Williams	Ken Bastian	Molly Campbell	Shawn Traxler
Benjamin Mangin	Denise Warren	Jedidiah Morse	Kena Kindle	Monica Teeple	Shawnna Bazan
Bethany Jennings	Derek Minyard	Jeff Wiser	Kent Guy	Monica Wolter	Shelby La Velle
Bethany Phenix-Chambers	DeVita Simmons	Jeffrey Ransom	Kerry Thomas	Morgan Moorehead	Shelley Relling
Betina Lynn	Diana Morgan	Jeneva Silkwood	Keum-Wan Yoo	Moriah Demers	Shelsea Collier
Bettina Kropp	Dina Jeffrey	Jenna Cleveland	Kevin Glenn	My Truong	Sherry Whitmore
Bevin Houston	Dixie Jo Johnson	Jenna Osdan Laughnan	Kevin Mulder	Natalie Weinstein	Shugo Nakagome
Blake Pierson	Don Hubbard	Jennie Eley	Kimberly Ely	Nathan Gue	Silvia Bennett
Blake Rogers	Donald Doolin	Jennifer Akerson	Kimberly McBride	Nathan Wise	Stacy Fuller
Bradley Teeters	Douglas Bennett	Jennifer Bell	Kimberly Waldron	Nathaniel Mornes	Stacy Hahn
Brandie Smith	Douglas Nickell	Jennifer Calicott	Kirk Miller	Neil Fain	Stefany Moorhead
Brendan Kaswell	Douglas Schwartz	Jennifer Colley	Kirsten Agard	Nicholas Johnson	Stephanie Sanders
Brennan Black	Dustin Joll	Jennifer Froehlich	Kris Hustwaite	Nichole Sage	Stephanie Sills
Brent Cummings	Dustin Locke	Jennifer Harding	Kristen Curtis	Nicole Johnson	Steve Aman
Brette Gentry	Dustin Whitaker	Jennifer Kordon	Kristen Dobyms	Nicole Mehta	Steven Gott
Bria Brannan Lindsey	Dyanne Zachman	Jennifer Lloyd	Kristen Sharpe	Nicole Pegues	Steven Loos
Brian Harder	Edane Mueller	Jennifer Ohrmund	Kristen Wilson	Niles Romero	Steven Savich
Brian Letsom	Edward Casey	Jennifer Owens	Kristian Hjelm	Noah Clarke	Summer Stephanos
Brian Roberts	Edward Konty	Jennifer Salmi	Kristin Brogdon	Noah Rademacher	Susan Clarke
Brock Cooper	Eiji Sato	Jennifer Sanguins	Kristin Cook	Olga Antropova	Suzie Thilberg
Brooke Riley	Elizabeth Booth	Jennifer Stalder	Kristin Peil	Owen Newman	Sydney Lighty
Brooke Steger	Elizabeth Cook	Jennifer Wood	Kristina Smith	Patricia Grady	Talon Wood
Bryan Darrow	Elizabeth Moore	Jered Porter	Kristina Stutz	Patrick Bencher	Tammy Blackburn
Bryan Gaston	Elizabeth Rizzo	Jeremiah Kelley	Kristine Butler	Paul Mitchell	Tanesa Michelson
Bryan Wages	Elizabeth Strouckel	Jeremy Cantrell	Kristine Ross	Paulo Smith	Tara Aprin
Bryanna Jones	Elizabeth Thompson	Jeremy Riel	Kyle Sisco	Penelope Parks	Taylor Meek
Camarie Greenwald	Elizabeth Wilson	Jeri Porhola	Kyle Williams	Pepper Thompson	Teodoro Reyes-Ramirez
Canada Converse	Elizebeth Erickson	Jesse Delao	Kyna Langhorne	Phillip Renich	Tera Dunbar
Candace Henderson	Else Wieseke	Jesse Smith	Lana Clifford	Phillip Alexander	Terri Parris
Carlos Restrepo	Emily Groth	Jesse Stafford	Lannette Wilken	Phyllis Haynes	Terri Weick
Carol Roselle	Emily Smith	Jessica Dean	Larry Dodd	Priscilla Dragoo	Terrie Wilson
Carolyn Saraceno	Emily Wheeler	Jessica Dollarhide	Launa Hale	Rachel Blankenship	Thomas Casey
Carrie Gough	Eric Carlson	Jessica Hampton	Laura Cronin	Rachel Carter	Thomas Wharton
Chad Krebs	Eric Eastridge	Jessica Hooper	Laura Rodello	Rachel McCoy	Tiana Martinez Alcaín
Charlene Kelso	Eric Faber	Jessica Randall	Lauren Fleishman	Rachel Messent	Tiffany Harris
Charles Whitmore	Eric Wilson	Jessica Spees	Lauren Larson	Raina Keefer	Tiffany Rockett
Chauncey Evans	Eric Yost	Jessica VanDusen	Leilani Dinwiddie	Ramsi Hawkins	Tim Brockway
Chelsea Allen	Erika Galleguillos	Jillian Acosta	Lesli Sanderson	Randolph Schindler	Timothy Lindstrom
Chelsea Balmer	Erin Gerhardt	Joachim Bowles	Linda Boyd	Randy Ringquist	Tobie Kerstetter
Cheris Ewing	Ethan Simpson	Joanna LaBahn	Linda Kuhn	Rauni Sivula	Tom Hagen
Cheyenne Wilson	Eva Sartorius	Joanna Vervoon	Linda McAndrews	Raychel Cardman-Peden	Tonya Hazlett
Chigusa Daicho	Evan Way	Joanne Cordon	Lindsey Mendell	Raymond Shields	Travis Avey
Chris Carwithen	Eve Pagliaro	Jocelyn Codington	Lindsey Thomsen	Rebecca Field	Travis Nelson
Chris Soto	Everett Bruner	Joe Lamont	Lisa Kim	Rebekah Hudson	Travis Snyder
Chris Swain	Forrest Bailey	Joe Matcha	Lisa Luttrell	Rebekah Shaw	Treva Moss
ChristiAnn Emous	Frances Redick	Joel Iboa	Lisa Williamson	Renee Opalane	Trevor Olsen
Christina Flores	Frankie Nyquist	Joel Scott	Lisa Wilson	Renee Tobler	Trina Ward
Christina Larson	Gabriel Hovdey	Joel Swensen	Lori Hock	Rhea Turner	Trumann Ducker
Christina McGuyer	Gary McCarthy	John Bixler	Luke Carlson	Rita Hill	Tyler Doak
Christina Riney	Gary Richardson	John Burgess Jr	Luke Glasscock	Robert Brown	Tyler Frans
Christopher Brehm	Gavin Starr	John Mulcahey	Luke McNamar	Robert Chase San Jose	Tyrel Wardle
Christopher McCluskey	Genevieve Schaack	John Nadolny	Lynn Bomar	Robert Johnson	Valerie Chaudhuri
Christopher Smart	George Sybrant	Jonathan Cannoy	Mackenzie England	Robert Murphy	Valerie Lent
Christy Simpson	Gina Femrite	Jonathan Lee	Mackenzie Winkle	Robin Miller	Vernon Grover
Clint Ault	Ginger Thompson	Jonathan Price	Maria Lance	Roseanna Boyer	Victor Gonzalez
Clint Hickey	Gloria Stockton	Jonathan Joseph Ferreira	Maria Steil	Rosemary Gray	Victoria Hefner
Cody Loy	Gregory Blake	Joseph Long	Maria Torralba	Ross Bradley	Victoria Stephens
Connie Volner	Grover Brockbank	Josh Byerly	Maria Zimmerman	Ryan Gerl	Vincent Varozza
Coreena Gauderman	Hallee Trigg	Josh Fox	Mariah Hinds	Ryan Hammond	Virginia Gossman
Corey Cooksey	Hannah Downs	Joshua Arguello	Marisha Trainor	Ryan Jacobs	Wayne Bailey
Cory Coffman	Hariman	Joshua Crist	Mark Harris	Ryan Morton	Wendy Rauch
Cory Elgin	Harry Holstein	Joshua Drake	Mark Maricle	Sally Brewer	Whitney Brooks
Courtney Marshall	Heath Banks	Joshua Hawk	Marrianna Bonse	Sally Winters	William Delph
Crystal Cluster	Heather Gray	Joshua Lewis	Mary Lash	Samuel Larkin	William Harwood
Crystal Fretwell	Heather Hickey	Joshua Quinton	Mason Shumante	Sancheen Collins	William Webb
Crystal Glenzer	Helen Mulligan	Joshua Rainey	Mathew Vargas	Sandi Hoselton	Willis Perritt
Crystal Karlsen	Hollingsworth Morton	Joshua Reddington-Cooley	Matt Estes	Sandra Baldwin	Yachin Hillebrand
Dale Coon	Holly Cowan	Joy De Moss	Matthew Garbe	Sara Balcom	Yonatan Schultz
Dale Erdmann	Holly David	Judith Ballard	Matthew Gembala	Sara Lanning	Yuliya Golosov
Dana Halttunen	Holly Jenkins	Julia Holtzman	Matthew Kessler	Sara Mulloy	Zachary Brown Silverstein
Danene Wanner	Hubert Hunter	Julia Huxtable	Matthew Taylor	Sarah Apker	Zachary Garver
Daniel Cameron	Hudson Barkley	Julia Lauch	Matthew Whyte	Sarah Dawson	Zachary Schafrath
Daniel Frommherz	Hugh Kent	Julia Mills			

A special congratulations to all of the scholars ...
From the Torch staff

TILT

Classifieds

Autos

1993 Dodge Dynesty \$500. Runs well, heat/air, cracked windshield. 606-1846 or 461-2429.

1992 Olds Cutlass Cierra SL. Runs great, front wheel drive. \$1800. Email:bobosbooks@yahoo.com

For Sale

Wedding dress size 26. A must see. Will sell for \$200. Contact Liz 501-0187.

Philips Color PDA, 64MB, Chargers, Cradle, INTERNET, WinCE, Software.

Retails \$299, Sacrifice \$100, 680-2923

Mac Power Book laptop. Few years old but works great. Ready for word processing, internet and traveling to school with you. Reasonable offer. Robert 683-1018

1979 Kawasaki Invader snowmobile 440cc. Works great \$500 OBO. Serious inquiries only: 541-520-5542

Education

GERMAN LESSONS at college level by credentialed teacher begins in March. Small group meets 2 evenings per week. Call for details at 688-7679

Events

New Day & Time: International Tea & Chat is now Fridays, 12-2 p.m..All are welcome to come! Bldg 1 / 206 The ASLCC Clothing Stash will hold their Columbia Sportswear Giveaway on March 12 in the Center building, 2nd floor, next to the ASLCC Book Consignment/SRC. The giveaway starts at 10:00 a.m. and ends when the product is gone. Your student L# is required to participate in the giveaway.

ASLCC presents Movie Friday every Friday from 11:00 a.m. to 1:00 p.m. in the Students First! Building, room #206. This month's theme is Woman's History. "The Iron Jawed Angles" is showing this week

ASLCC presents musician Annie Rapid performing March 11 from 12:00 to 2:00 p.m., in the Center building, 1st floor, next to the cafeteria.

For rent

Affordable housing for LCC students. Newly updated, 1 bedroom apartments. \$305.00 per month. Contact Jennings & Co. 683-2271

Large room, mature, balanced, quiet, close, clean, safe, no pets, non-smoking, garden, newer efficient. 344-1964

FREE

For free - car top carrier. Fits compact station. 463-5656

Help Wanted

Party hostesses wanted. Earn 45% of total sales using our catalogs! Call 434-0611

off the mark

by Mark Parisi

www.offthemark.com



SCRABBLE BRAND G₂ R₁ A₁ M₃ S₁

SCRABBLE® is a trademark of Hasbro in the US and Canada. ©2004 Hasbro. Distributed by Tribune Media Services, Inc. All rights reserved.

O ₁	I ₁	I ₁	N ₁	L ₁	B ₃	L ₁	Double Word Score	RACK 1
E ₁	O ₁	A ₁	O ₁	L ₁	S ₁	R ₁		RACK 2
A ₁	A ₁	G ₂	H ₄	N ₁	R ₁	C ₃		RACK 3
A ₁	A ₁	N ₁	A ₁	V ₄	R ₁	C ₃	1st Letter Triple	RACK 4

PAR SCORE 145-155
BEST SCORE 204
FOUR RACK TOTAL
TIME LIMIT: 20 MIN

DIRECTIONS: Make a 2- to 7-letter word from the letters in each row. Add points of each word, using scoring directions at right. Finally, 7-letter words get 50-point bonus. "Blanks" used as any letter have no point value. All the words are in the Official SCRABBLE® Players Dictionary, 3rd Edition.

For more information on books, clubs, tournaments and the school program go to www.scrabble-assoc.com or call the National SCRABBLE® Association (631) 477-0033. 03-04

ANSWERS TO PREVIOUS SCRABBLE PUZZLE

SCRABBLE BRAND GRAMS SOLUTION

A ₁	D ₂	U ₁	L ₁	T ₁	L ₁	Y ₄	RACK 1 =	65
O ₁	R ₁	P ₃	H ₄	A ₁	N ₁		RACK 2 =	11
B ₃	L ₁	O ₁	S ₁	S ₁	O ₁	M ₃	RACK 3 =	61
P ₃	O ₁	R ₁	T ₁	E ₁	N ₁	T ₁	RACK 4 =	68

PAR SCORE 145-155
TOTAL 205

SCRABBLE® is a trademark of Hasbro in the US and Canada. ©2004 Hasbro. Distributed by Tribune Media Services, Inc. All rights reserved.

Weekly Silliness

Dear Tech Support,

Last year I upgraded from Boyfriend 5.0 to Husband 1.0 and noticed that the new program began making unexpected changes to the accounting software; severely limiting access to wardrobe, flower and jewelry applications that operated flawlessly under Boyfriend 5.0. No mention of this phenomenon was included in the product brochure.

In addition, Husband 1.0 uninstalls many other valuable programs such as Dinner/Dancing 7.5, CruiseShip 2.3, and OperaNight 6.1 while installing new, undesirable, programs such as PokerNight 1.3, SaturdayFootball 5.0, Golf 2.4 and ClutterEverywhere 4.5. Conversation 8.0 no longer runs, and invariably crashes the system. Under no circumstances will Husband 1.0 run HouseCleaning 2.6. I've tried running Nagging 5.3, to fix Husband 1.0, but this all-purpose utility is of limited effectiveness. Can you help, please!!!!

Signed,
Jane

EARN A DEGREE WHILE YOU EARN A LIVING

- Bachelor of arts degree in management and organizational leadership
- Attend classes one night a week for 16 months
- Earn credit for life-learning experiences
- Financial aid available

INFORMATION MEETINGS: 6:30 P.M.
Thursday, March 11
First Evangelical Church, 834 Monroe Street, Eugene

Call 1-888-888-0178
www.georgefox.edu



Ranked a "Best value" and a top-tier masters university in the West.
U.S. News and World Report

Find the Titan Logo



Hidden somewhere in this week's Torch is another Titan logo, (like this one). Find it and receive a FREE can of pop from your SRC.

STUDENT RESOURCE CENTER

Located in the Student's First Building, 2nd floor
AND in the Center Building, 2nd floor

Now offering Snack Packs!

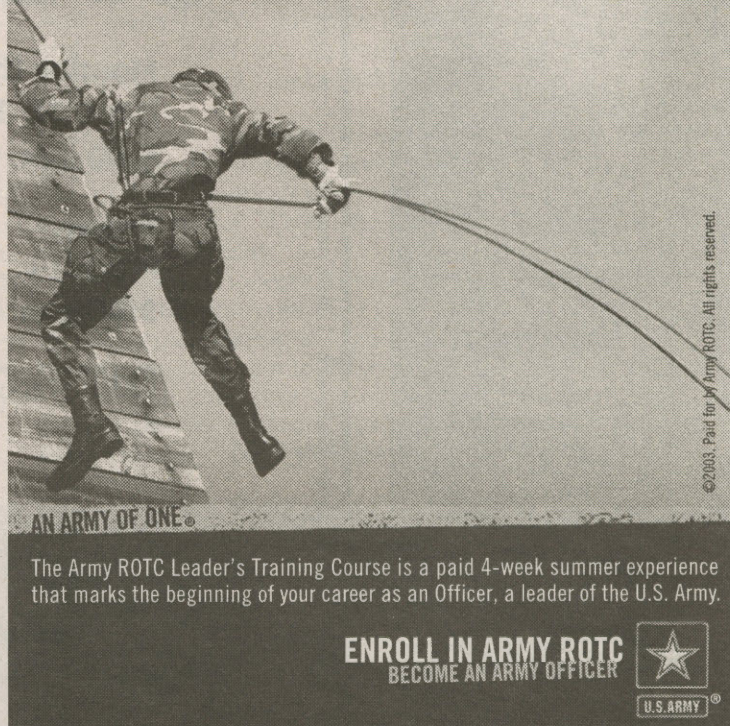
\$1.75 Morning Snack Pack

Comes with cofee and your choice of beverage or yogurt and a bagel or muffin.

\$2.00 Afternoon Snack Pack

Comes with a can of pop, bag of chips, and your choice of a burrito, hot pocket, chimichanga, or cup-o-noodle soup.

GETS THE ADRENALINE GOING.
YOURS AND WHOEVER READS ABOUT IT ON YOUR RESUME.



AN ARMY OF ONE.

The Army ROTC Leader's Training Course is a paid 4-week summer experience that marks the beginning of your career as an Officer, a leader of the U.S. Army.

ENROLL IN ARMY ROTC
BECOME AN ARMY OFFICER



To find out more contact CPT Darren McMahon at 541-346-7682. U of Oregon Army ROTC.

BACK PAGE

Winter Term Final Examination Schedule

For the week of March 15 - 20

To find exam time, find the day, then the time the class is held

Class Days: MWF or M, W, F, MW, WF, MTuWThF, MTuWTh, MWThF, MTuThF, MTuWF

Class Days: TuTh or Tu, Th, TuWThF

Class starts at:	Exam Day:	Exam time:	Class starts at:	Exam Day:	Exam time:
7:00 a.m. or 7:30 a.m.	F	7:00-8:50 a.m.	7:00 a.m. or 7:30 a.m.	F	9:00-10:50 a.m.
8:00 a.m. or 8:30 a.m.	M	8:00-9:50 a.m.	8:00 a.m. or 8:30 a.m.	Tu	8:00-9:50 a.m.
9:00 a.m. or 9:30 a.m.	W	8:00-9:50 a.m.	9:00 a.m. or 9:30 a.m.	Th	8:00-9:50 a.m.
10:00 a.m. or 10:30 a.m.	M	10:00-11:50 a.m.	10:00 a.m. or 10:30 a.m.	Tu	10:00-11:50 a.m.
11:00 a.m. or 11:30 a.m.	W	10:00-11:50 a.m.	11:00 a.m. or 11:30 a.m.	Th	10:00-11:50 a.m.
12:00 p.m. or 12:30 p.m.	M	12:00-1:50 p.m.	12:00 p.m. or 12:30 p.m.	Tu	12:00-1:50 p.m.
1:00 p.m. or 1:30 p.m.	W	12:00-1:50 p.m.	1:00 p.m. or 1:30 p.m.	Th	12:00-1:50 p.m.
2:00 p.m. or 2:30 p.m.	M	2:00-3:50 p.m.	2:00 p.m. or 2:30 p.m.	Tu	2:00-3:50 p.m.
3:00 p.m. or 3:30 p.m.	W	2:00-3:50 p.m.	3:00 p.m. or 3:30 p.m.	Th	2:00-3:50 p.m.
4:00 p.m. or 4:30 p.m.	M	4:00-5:50 p.m.	4:00 p.m. or 4:30 p.m.	Tu	4:00-5:50 p.m.
5:00 p.m.	W	4:00-5:50 p.m.	5:00 p.m.	Th	4:00-5:50 p.m.

Evening (5:30 p.m. or later) and Weekend Classes: Examinations scheduled during regular class times.

This schedule does not apply to Downtown Business Education Center Classes

FLEET from page 1

the vehicles. The motor pool budget is also used to maintain the vehicles so as to encourage a slower replacement rate. In this fashion, vehicles are often able to exceed the 100,000-mile mark.

Mike Ruiz, LCC Director of Facilities Management, has suggested using capital outlay, which is essentially a general replacement fund, to fund new vehicles.

"It's not typical to use capital outlay for these purposes but hybrid vehicles will save money in the long run and this legitimizes the use of capital outlay," Ruiz said.

The current pool of motor vehicles consists of three sedans (a 1997 Ford Taurus with 91,000 miles, a 1998 Mercury Mystique with 93,000 miles, and a 1999 Mercury Sable with 48,000 miles.), three Ford Windstar


mini-vans (a 1996 with 124,000 miles, a 2000 with 50,000 miles, and a 2001 with 2,000 miles), three larger vans, and six service vehicles (none of which have fewer than 156,000 miles).

"The college is responsible for making sure we have the least possible negative impact on the environment. The more we can wean ourselves from gas-powered [vehicles] the better," Matsen said.

What do I know about me?

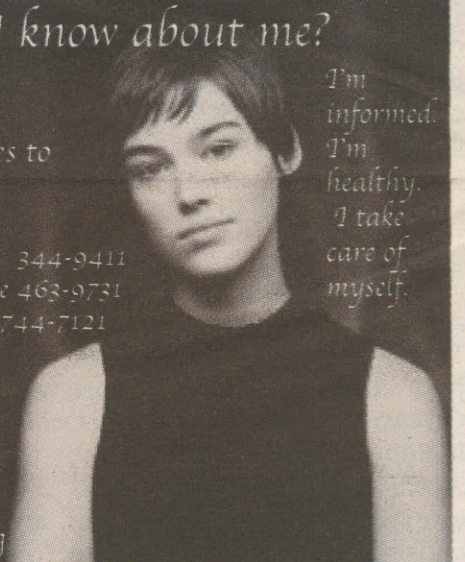
Free birth control, supplies and services to those who qualify.

1670 High St. Eugene 344-9411
793 N. Danebo, Eugene 463-9731
225 Q St. Springfield 744-7121

 Planned Parenthood

www.pyfisse.org
www.wecandobetter.org

I'm informed.
I'm healthy.
I take care of myself.



Ashbury
Park
at
Cozmic
Pizza

Sunday,
March 7

8th & Charnelton

Eugene, OR
541-302-6013

All ages
welcome.

Lane Community College Bookstore Lane Community College Bookstore Lane Community College Bookstore Lane Community College Bookstore

MARCH 15th thru 19th

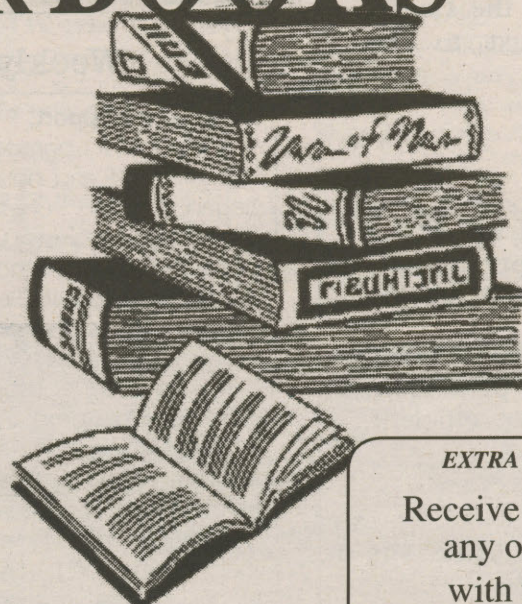
CASH FOR BOOKS

Monday thru Thursday,
March 15, 16, 17 & 18
8:00 a.m. to 7:00 p.m.

Friday,
March 19
9:00 a.m. to 4:30 p.m.

FREE POPCORN! YUM!

Lane Community College
Bookstore Your Campus
YOUR STORE



We'll buy
them back,
no matter
where you
bought them!

EXTRA SAVINGS!

Receive 20% OFF
any one item
with this ad.

Exclusions are posted.

Lane Community College Bookstore Lane Community College Bookstore Lane Community College Bookstore Lane Community College Bookstore