

## DRAWING FLIES

Monique Belitz's Drawing 217 class was able to take advantage of the unseasonably warm, sunny weather this week. Student Kim Crouse sketches an outdoor scene late into the afternoon, Monday, Mar. 8.

Photo by Sean Hoffman



## College invests in on-campus housing... it's for the birds

Grounds crew hopes new birdhouses will draw birds away from buildings.

**Aidan Keuter**  
Staff Writer

Five new birdhouses on campus will provide a home for many a bird come Spring in hopes of providing an alternative to the doors and other entryways the wildlife have used for roosting in the past.

LCC head groundskeeper Frank Drengacz wanted to try an approach different from those used in the past to draw the animals away from buildings, where their droppings have become an unsightly mess.

"There are always going to be birds [around campus]," said Drengacz. "The idea is to provide alternate housing for the birds. Hopefully, these houses will be more inviting than their usual haunts over doorways."

In the past, student services and facilities have attempted to dissuade birds from nesting in undesirable places by putting wire up around some nesting spots, particularly on the Center building. Another method tried was using a sticky substance for the birds to step in, in theory deterring them from returning. But neither

those ideas nor others have stopped birds from making their homes on the school buildings.

Drengacz, his team of work-study students and LCC carpenter Steve Kayl built and painted the "condominiums." Travis Buss, a work-study student and biology major, found the designs on the Internet.

"We wanted to create a more wild-life-friendly campus, to try to mimic nature in the unnatural environment [of LCC]," said Buss.

The material for the birdhouses cost about \$200 and came out of the general fund. The hope is that the expense now will save the school money in the long run by reducing clean up and future repairs.

Drengacz says that there are about 15 different species of birds that live around the school grounds, and he thinks most of them will utilize the new homes. Two species that won't be using the houses are the pigeon and the aggressive starling. The original doors to the houses had to be made smaller to ensure that starlings couldn't get in.

No feed is placed in the houses nor are there plans to build more if they prove to be successful.

"We want to make houses for the birds that are already here, not lure new ones [to campus]," Drengacz said.

## Proposed sports fee designed to save baseball, volleyball

*The initiative is one of seven on May ballot*

**Aidan Keuter**  
staff Writer

Last Saturday, March 6, 2004 the Lane Community College Baseball team played the first game of the season, which could be the last season ever.

Due to budget cuts, the athletic department has decided to eliminate baseball and volleyball from the group of varsity sports at the school.

The Athletic Committee is hoping to implement a \$5 addition to student fees this May to help replace money that has been cut from the Athletic Department's budget in recent years. The extra money will be used to keep the sports on campus, but at the lower competition level of club sport status. The hope is that they can be restored to varsity status at a later date.

This fee will be voted on in May by students during the ASLCC elections.

Ryan Hague, game management supervisor and founding member of the committee, explained the proposed fee as necessary to prevent the affected sports from being lost completely.

"Our plan is to give the money to the recreational/club sports program," he said. "The hope is to keep the interest and the infrastructure [for the cut sports] in place and make it possible for students who want

to play [baseball or volleyball] to do it competitively, just not at the varsity level. Then, when economic conditions improve, and there is more money in the General Fund we can go back to the board and say, 'hey, people want to play,' and we can reinstate them as varsity sports."

Hague says that the athletic department chose baseball and volleyball to cut because of Title Nine laws that essentially say colleges and universities have to provide an equal amount of men's and women's sports, not because the baseball and volleyball teams are doing poorly or for lack of interest. In fact, baseball has been to the NWAACC tournament eight years in a row and volleyball finished third this year.

The committee, formed only fall term, went before the LCC Board of Education on March 10 in an effort to get the proposed fee increase on the LCC general election ballot in May for the students to vote on.

The fee increase would be the athletic department's first since 1994. Other student fee-funded groups like OSPIRG and ASLCC typically get increases annually or bi-annually.

In the interim, and especially recently, the athletic department has dealt with shrinking budgets and program cuts, making time consuming fundraisers a fact of life for teams and coaches. The department hopes that this fee will help reduce the need for team

fundraisers, letting coaches and players focus more on practices and games. The money will also be used to offer more athletic scholarships, which have been cut to 16 from the state norm of around 24.

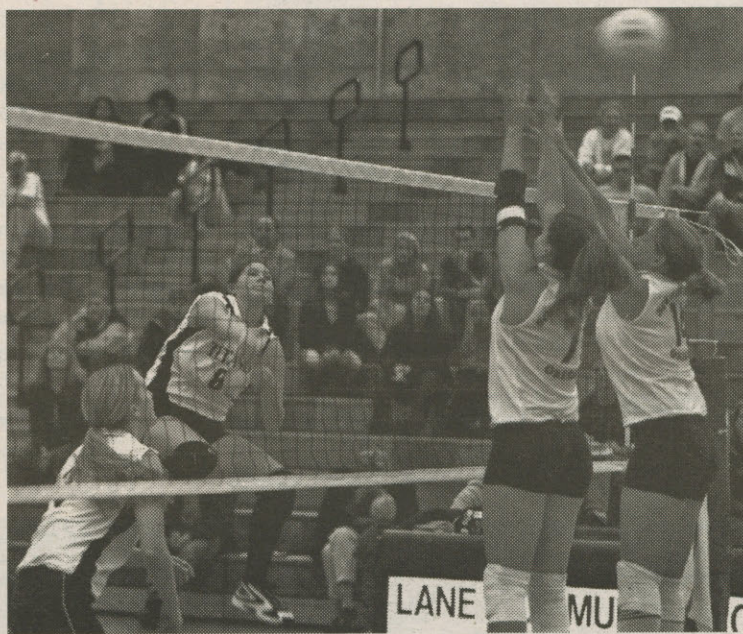
See side story for full list of proposed ballot measures on page 3

From now until May the committee will be primarily dealing with raising student awareness and getting the measure passed during the campus vote. After that they hope to work on issues, primarily increasing student and community interest of games at the school.

The committee hopes to eventually have the necessary money to fund other projects currently on the "back burner," such as getting a sign built on 30th Avenue so passing drivers can see when there are going to be games on campus as well as other events like plays and concerts. There is a possibility of starting a mentor program with local high schools.

For now though, getting the measure on the ballot and passed by students in May is the top priority.

"We really want to create that campus atmosphere [when students are excited and involved with what's happening at school] and think that varsity athletics and recreational sports are a great way to go about that," said Hague. "We don't want to see these programs and others continue to get cut."



The future of women's volleyball is up in the air for next year, pending a May ballot approval by LCC students. Here two LCC volleyball team members get past opponents in a match at the Lane campus.

Photo by collin Andrew

### INDEX

OPINION	2
NEWS	3
AGE	4
SPORTS	5
TIET	7
BACK PAGE	8

### WEEKEND WEATHER

Sunny  
67/40



Cloudier  
cooler  
60/44

### Coming next week:

Finals week

Next edition: April 1

no foolin'



# OPINION

## Editor in chief responds to attacks on paper's integrity

Please understand, I'm not trying to burn bridges and none of the comments in this article are being made on a personal level. I can't remember the last time I met a person I didn't like and I respect everyone's opinions in so far as they are opinions.

But there comes a time for everyone in leadership when they are held accountable for their decisions. As editor in chief of the Torch, I feel I am accountable not only to my staff but to you, the readers. So I am writing in response to a number of letters that have questioned the Torch's integrity and — ultimately — my decisions.

I like to think I'm a pretty moderate, laid-back guy with relaxed leadership style. But in this instance, I will not pretend to be anything but outraged.

When I was selected as editor in chief, one of the first things I did was bring Liz Mayfield on board as managing editor. She is not only a phenomenal journalist who I've worked with before but she is a wonderful friend.

She is also a clever, opinionated writer with a distinct voice. For this reason I was delighted to print a column defending Rush Limbaugh's controversial remarks that led to his resignation from ESPN. In the wake of this article, which created a mini-controversy in its own right, I continued to encourage Liz to write more columns from her decidedly conservative point of view.

This, of course, only prompted more controversy. I can't tell you how proud I am of those decisions. And more than that — I am so proud of Liz for having the courage and the integrity to express her opinions in an increasingly hostile environment. For the rest of my life, Liz Mayfield will be my First Amendment hero.

But the controversy has degenerated into spiteful name-calling and juvenile rhetoric. There are those who seem to think I should regret my decision to print Liz's column.

One letter criticized not only the decision to run Liz's column but a letter that sought to defend it in the face of overwhelming criticism. "It's unfortunate that

the Torch's editorial staff decided to print both opinions. They create an atmosphere contrary to the core values of the college. I look forward to a new editorial staff who will work to promote greater understanding and care of our different communities instead of creating conflict," (Torch, letters, Feb. 5, 2004).

I shouldn't have let Liz's opinion out in the open? Really? And I should have shut down the person who had the guts to speak out and agree with her? Are you sure?

I think what's unfortunate is that an educated person in this society could have such a narrow, anti-idea worldview. (But, then again, those of you who've read my personal columns know I don't think much of the educational system in this country.)

Ideas are not harmful — ideas are powerful. And all power can be used for good, evil or some shade of gray. But by pretending that ideas don't exist, we only make our existence worse. This is why our constitution promotes and protects the free exchange of ideas. And, as a member of the free press, I am extremely

proud to be an integral part of this exchange.

Liz Mayfield's most controversial opinion was a piece of satire printed Nov. 15. The freedom of satirical speech is under attack in this country. People hate satirists. In a day and age where Howard Stern is thrown off Clear Channel and Phil Hendries is stepping on pins and needles, it's more important than ever to protect the speech of satirists. Censorship is censorship no matter who does it and I am proud to fight on the side of free speech — especially satirical speech.

Another criticism I hear frequently goes along these lines, "Would you allow the publication of overtly hostile comments expressed to Jews or Republicans, Christians or vegetarians? If a white supremacy group demanded equal voice in your paper, would you print these views? I doubt all these scenarios. And yet you give free voice to the anti-gay perspective," (Torch, letters, March 11, 2004).

When I interviewed for this job I was asked a similar question. The bottom line is yes. As long as

the article is submitted as directed in our submission guidelines; follows the letter and spirit of the law with regards to libel and invasion of privacy; serves a relevant interest of our readership and conforms to the purpose set out in our mission statement — I will print it.

When I was in high school and trying to rent out a part of my school's facilities, my principal said something that stuck with me. "If the KKK came in and wanted to rent this school, I couldn't say no to them as long as they followed the law. Now I personally hope that I just never have to deal with that. But if it happened, I couldn't stop them."

Don't try and catch me without integrity when it comes to journalism. Don't lie in wait to catch me and expose me as a hypocrite or an ideologue because it isn't going to happen. I practice what I preach when it comes to how I run this paper — and my staff does too (yes, even Liz).

Liberals are often shocked and offended when their patriotism is called into question with such statements as "If you want all these taxes and socialized medicine but don't want to salute the flag, you should just move to Russia and leave America for the real Americans."

But a letter says, "Your stance on abortion is equally offensive. And I suppose you're against gay marriage too. You'll be happy to know that I've found the perfect match for you if you're single. Saddam Hussein shares your views on gay marriage, abortion and femininity (for that matter, so did Hitler and Osama Bin Laden).

"If you don't like the idea of freedom, then why don't you move to a country with your same values rather than trying to force your values on people here like George Bush is doing," (Torch, letters, March 11, 2004).

Liz Mayfield's view on abortion, as expressed in the Torch, are simply that she identifies herself as a "pro-lifer" and she supports the recent partial-birth abortion ban. And for this we should hook her up with Hitler? Does this writer honestly think Rush Limbaugh, George Bush and Liz Mayfield are the only pro-lifers

See **INTEGRITY** page 3



### ENOUGH IS ENOUGH

Gabe Bradley  
Editor in Chief

## Letters to the Editor

Dear Liz

Since I started attending LCC I've been offended by everything you have so far written in the Torch, for instance your Metro-sexual article. I was born and raised in Eugene and have always considered myself to be very feminine, despite the fact that I'm bi-sexual.

Even though I'm biologically female I took your Metro-sexual quiz and according to your quiz key, based on absurd things like whether someone carries a comb in their pocket, I was in the "Manly-Man" category.

Not only was your Metro-sexual article offensive to men who may be gay, feminine, or otherwise not manly enough according to your standards, it is also offensive to women. You obviously judge femininity by how often someone looks

at themselves in the mirror and whether or not they wear the color pink. Since I prefer the color green and don't even own a brush due to short hair then according to you I must be a man.

Your stance on abortion is equally offensive. And I suppose you're against gay marriage too. You'll be happy to know that I've found the perfect match for you if you're single. Saddam Hussein shares your views on gay marriage, abortion and femininity (for that matter, so did Hitler and Osama Bin Laden.)

If you don't like the idea of freedom, then why don't you move to a country with your same values rather than trying to force your values on people here like George Bush is doing?

Shane Feinstein  
LCC student

## Coverage unbalanced

I am weary of the overt denigration of the queer community, under the auspices of First Amendment protection, which appears to be facilitated, if not encouraged, by your editorial policy. Though I have no training in journalism, it simply seems unprofessional to me.

Would you allow the publication of overtly hostile comments expressed to Jews or Republicans, Christians or vegetarians? If a white supremacy group demanded equal voice in your paper, would you print their views? I doubt all these scenarios. And yet you give free voice to the anti-gay perspective. What's up with that?

Doug Smyth  
LCC Counselor

## Eating right, staying busy

A healthy dinner: bite sized lasagna in a rich meat sauce, flavorful pepperoni pizza and tasty bowls of teriyaki chicken are always very good to eat when you are smart.

After a wild night out make a good project for my art class.

In a cartoon art painting, stay in bed with your blue jean pants on. A good artist at work is always busy. Art work about a sticky situation always make good projects to work hard at art. Oil paint all day long or over night.

March 11, 2004 is the last

Torch paper. And on April 1, 2004, the Torch paper picks up again. It's always busy. In the future it'll be "help wanted" for new people to work at the Torch. I'm busy studying

and I work at the Torch paper at the same time.

Michelle is a smart, good-looking woman who is going to Portland, Oregon to go to college up there. There is your own lifestyle. Good luck.

Have a good evening. I have to go out on a dinner date.

Editor's note: John Mackwood is a G.E.D. student at Goodwill in Springfield. John writes his column with the help of a Torch editor.



### MACK WORLD

John Mackwood  
Columnist

## THE TORCH

The official student-managed newspaper of Lane Community College is published every Thursday

### Submission Guidelines

Letters to the editor should be limited to 250 words. Commentaries should be limited to 750 words. Please include the author's name, phone number and address (address and phone number are for verification purposes only and are not for publication.) The editor in chief reserves the right to edit letters and commentaries for length, grammar, spelling, libel, invasion of privacy and appropriate language.

## Editorial Board

Gabe Bradley.....Editor in Chief  
Liz Mayfield.....Managing Editor  
Travis D. Roderick.....News Editor  
Shawn Miller.....Sports Editor  
Melissa Vandever.....A&E Editor  
Megan Wilson.....Photo Editor  
Sean Hoffman.....Asst. Photo Editor  
Maria Lance.....Production Manager  
Noah Rademacher.....Asst. Production Manager

Advertising Manager  
Shannon Browning

News & Editorial Adviser  
Frank Ragulsky

Production Adviser  
Dorothy Wearne

## Contact Us

Editor in Chief 463-5655  
Newsroom 463-5881  
Production 463-5109  
Advertising 463-5654  
E-mail: torch@lanec.edu  
Mail: The LCC Torch,  
Bldg. 18 Rm. 218  
4000 E. 30th Ave.  
Eugene, OR 97405



# News

## I think that white flag is a little tainted

Let me first congratulate Liz on her ability to publicly apologize for her inadvertently violence-promoting comments in the Metrosexual article (Torch, Nov.13). I will give her the benefit of the doubt by assuming that her initial jokes about beating people up were indeed made in thoughtlessness, rather

than through malicious intent. Whatever the motivation for her sudden change of heart, I commend her for publicly owning her mistake. It takes a lot of strength to be able to truly look inside ourselves and take this situation as the learning oppor-

tunity that it is. However, I have some feedback to offer.

First, it was exceedingly inappropriate to specifically mention the QSA in her apology. I will hope this was yet another sweet little "oops" of a naivety on her part, but it sure seems to work in her favor.

By pointing the public finger at QSA, they have been set up as a target for all the anger that has been stirred up on campus throughout this whole ordeal. Not only does this help to perpetuate the creation of an unsafe environment for QSA and their supporters on campus, but it also deflects

the attention away from the original offense. Strategically it was a good move for Liz, but if she truly meant her apology she might have considered the impact of her words more carefully. And sure enough, with the very next issue came a letter, which was specifically targeted at QSA.

I'd also like to point out the inaccuracy of Liz's statement. Is she deliberately trying to marginalize the QSA, or just to minimize the true nature of the amount of outrage that her careless comments provoked on campus? While QSA was the only organization that had the

See **WHITE FLAG** page 7

### GUEST COMMENTARY

**Spider Smith**  
Allies For Change

## INTEGRITY from page 2

in this country? Give me break.

All Liz Mayfield has done is to have the audacity to express an opinion that you don't agree with it. It's called America, baby, get used to it (speaking of Phil Hendries). America is not about pro-life vs. pro-choice or gay marriages vs. civil unions. America is about freedom of all kinds — especially freedom of speech and ideas.

And as far as gay marriage goes, Liz Mayfield supports it! You know what happens when you ass-u-me?

A few months ago, Eugene Weekly ran a cover story suggesting that conservatism is becoming the new free-thinking campus revolt — especially in Eugene. Controversial activities of the young Republicans at Roger Williams University and studies reported in the Register-Guard seem to support an understanding of this trend. It's the young conservatives that are raising hell on their college campuses and drawing criticism from an establishment that they feel is stacked against them. Whether they're right or not, is another issue, but it's an interesting parallel.

Well here I am — a call-'em-as-I-see-'em moderate — and I find myself on the side of the new free-thinking movement. It's a freedom to think conservatively — or even better, a freedom to reject dogma and demagoguery in all its forms.

I've seen a lot of stupid opinions and I've

printed them all. Even in this column I've dignified some of these ridiculous affronts to logic, reason and free-thought by responding to them (a decision that I make reluctantly).

The bottom line is this: I am pro-idea. I believe in ideas and their free exchange. I will continue to print Liz's columns just as I will continue to print narrow-minded, anti-idea letters to the editor.

But I think these letters have gone well beyond the point of saying anything intelligent, thought provoking and significant. It's getting old. But I will not change my editorial policy. You who want to continue to beat this dead horse may do so. But I am moving on and I hope you will join me.

This is a presidential election year, for crying out loud. Student fee increases totaling \$12.56 are going to appear on the ASLCC ballot this spring. Surely you can see something in the world more important to voice your opinion about than a newspaper column that appeared four months ago.

This paper is moving on. We'll continue to print your letters, but know that you'll be speaking in an echo chamber. Liz will not respond to any more attacks and neither will I.

I look forward to your letters — particularly the ones that have something new to say.

## News Briefs

**A clarification** regarding the article "Campus to purchase loaned sculpture" (Torch, Feb. 26, 2004): LCC president Mary Spilde has reportedly received several calls from students concerned that the money used for purchasing the "Conception of Creation" statue will come from funds that could otherwise be used to further educational pursuits. As stated in the article, all monies used for the purchase of the statue will come solely from donations. Many donors give contributions to the college for one specific purpose. In this case, monies to be used have been donated on the basis that they explicitly go towards campus beautification. No other college funds will be used. Any extra money needed will be raised through fundraisers.

**Open registration for Spring term classes** begins Thursday, Mar. 11. Students should have already received the printed class schedule in

the mail. Students can register online using ExpressLane, available from the LCC homepage. The college expects heavy use of ExpressLane during the opening days of registration; students registering from home may face considerable delays. Students may also register from any campus computer lab or at the registration kiosks located in Students First.

**The college will be moving all telephone lines** to a new telephone switch on the main campus on Mar. 12, 13 and 14. Phones for the Public Safety Office, campus emergency phones, KLCC, and the trunk lines to Downtown Center, Wildish, Flight Tech, Cottage Grove Center, and Florence Center will be disconnected Saturday, Mar. 13, at 8 a.m. and should be brought back on line by Saturday at noon.

**All other phone lines will be taken down Friday night**, Mar. 12, and reconnected to the new switch on

Saturday, Mar. 13 and Sunday, Mar. 14. Each line will have to be reconnected individually. There are 1,200 lines to be disconnected and reconnected over the weekend. The voice-mail system will also be down for most of Saturday due to the move. However, this work will not affect ExpressLane or student registration.

**American Association of Women in Community Colleges (AAWCC)** is seeking applicants for a scholarship to the 13th annual Oregon Leaders Institute. The institute, to take place at Silver Falls Conference Center on June 14-17, 2004, focuses on leadership development and connects women with community college administrators and executives from across the state. This is an opportunity for women who are seeking to enhance their leadership skills. Applications must be received by Mar. 15, 2004. For more information contact Donna Zmolek, 463-5750 or [zmolekd@lanecc.edu](mailto:zmolekd@lanecc.edu).

## Ballots at a Glance

The ASLCC senate has approved seven ballot measures to be referred to the students for their vote in the May elections. The mandatory ASLCC student activity fee was capped so that the fee cannot exceed 78.5 percent of the cost of one credit of resident tuition. If all measures were to be approved, the student activity fee would increase from \$32.56 to \$44. The seven proposed ballot measures and their arguments are as follows:



•#1. Shall the student activity fee be increased \$5 fee for support of athletics and recreational sports? The current Recreational Sports and Athletic student activity fee is not meeting student needs. The fee has not been increased since its inception in 1994. The Recreational Sports Program currently serves over 5,449 participants per year with on and off-campus events. The athletic programs currently serve over 120 full-time students will lose 25 percent of the program offerings due to board

and approved budget reductions. If approved, the fee increase will increase the current recreational sport opportunities for students and their families, allow the sports eliminated through the budget cuts to remain as club sport programs, and allow the remaining intercollegiate sport programs to offer comparable programs to the 39 NWAACC colleges.

•#2. Shall the student activity fee be increased \$1 for ASLCC childcare co-op to sustain the current level of services for student parents at Lane? A \$1 increase will allow for continued services in low cost affordable childcare for student parents at Lane. A "wait list" is in place affording students equal and impartial access to childcare services.

•#3. Shall the student activity fee be increased \$1 to subsidize the cost of childcare and the child development center for student parents? Currently there is a demand for more on campus child care for student parents. The childcare co-op is currently operating at capacity. If approved, this increase would reduce the cost for student parents who have children in the Child Development Center and expands the number of on-site childcare placements for student parents.

•#4. Shall the student activity fee be increased \$1 to provide support for student clubs and organizations? If approved, the fee increase would establish a dedicated funding source for clubs and organizations to provide for leadership training, special events, club activities, student travel and training, and stipends. Funding decisions and budget criteria will be determined by a Council of Clubs, in conjunction with ASLCC and be bound by college and ASLCC policies and procedures.

•#5. Shall the student activity fee be increased \$1 to help stabilize funding for the international student program? General Fund support for this program has been eliminated and the total cost of the program is now placed on the international students who pay a \$150 fee (\$90 to enrollment services, \$60 to International Student Program), on top of all other fees and a much higher tuition rate. ISP activities are open to all students on campus and attendance and participation in such programs as the Conversation Partner Program, social activities and ski trips are attracting increased numbers of resident students. If approved, this fee increase would help stabilize ISP funding during time of enrollment fluctuation and improve opportunities for all students to participate in program and activities.

•#6. Shall the student activity fee be increased \$1 to support programs and services offered by the Women's Program? Student needs are not being met by current Women's Program service level, and the college is not in a position to increase general fund support. If approved this fee increase would be used to support: a) Transiciones, a bridge program to help Spanish speaking women access college classes and programs. Transiciones is a program that will assist Latina students into Lane's Transitions to Success Program; b) ACCESS. Currently this program is supported by some Perkin's funds but is not guaranteed. If approved, students will be able to receive additional support, advising and career exploration activities; c) Women's Center. — if approved, additional staffing and support would be possible.

•#7. Shall the student activity fee be increased \$1.44 to offset increased costs of the ASLCC Legal Services program and other operational expenses? ASLCC Legal Services provides free non-litigation legal services to over 200 students per term. These services include name changes, non-contested divorces, child custody paperwork, and resolution of landlord-tenant disputes. ASLCC Legal Services are available to all credit students on the main campus. The portion of the fee that goes to ASLCC operations currently pays for the ASLCC Legal Services program (attorney contract, legal secretary and supplies). If approved, this increase will cover the costs of the attorney contract and other expenses.



# ARTS & ENTERTAINMENT

## A&E Calendar

### March 12

**Jazz Band and Spectrum Vocal Jazz Choir:** Begins at 7:30 p.m. in Building 6, Performance Hall. Suggested donation is \$4-\$6. For more information contact Myrna Seifert at 463-5161 or the Ticket Office at 463-5202.

**Fighting Anti-Semitism Workshop:** This workshop will be offered in two three-hour sessions: Friday, Mar. 12, from 1:30-4:30 p.m., and Monday, March 15, from 1:30-4:30 p.m. in Building 5, Room 206. To register, call 463-5852. For more information contact Jim Garcia at 463-5852 or garciaj@lanecc.edu.

**Open Show:** LCC dance students perform term projects. 2 p.m. in the dance studio, P.E. building, Room 132. For more information contact Cheryl Lemmer at 463-5647.

### March 13

**Dr. Seuss Movies:** Phi Theta Kappa Honor Society and Sigma Zeta Chapter hosts a free movie day in Forum 107 from 12 p.m.-4 p.m. to celebrate Dr. Seuss' birthday. "Cat in the Hat" and "How the Grinch Stole Christmas" will be shown. Everyone is invited to this event, but children must be accompanied by an adult. Book donations will be accepted for the Santa Clara Library Book Drive. For more information contact PTK at 463-3238 or Bette at 463-5365.

### Ongoing

**"Enjoy it While it Lasts!" Studio Assistant Show:** The show features sculpture by Kate Ali and ceramics by Rowen Means and continues through March 18. The LCC Art Gallery is located downstairs in Building 11. Hours are 8 a.m. to 8 p.m. Monday through Thursday, and Friday from 8 a.m. to 4 p.m. For more information contact Ali at 463-5778.

## New art exhibit showcases student sculpture

The continual cutting of funds from art programs prompts the title "Enjoy It While It Lasts."

**Melissa Vandever**  
A&E editor

Two studio assistants in the LCC Art Department have a chance to show their work in the Art Gallery's current exhibit, "Enjoy It While It Lasts."

The exhibit, which runs through Mar. 18, features sculpture by Kate Ali and ceramic pottery by Rowen Means.

Ali's pieces are created from a variety of materials including bronze, wood, steel, stone and ceramics and are influenced by art nouveau and comic book styles.

"Birds have come up a lot as well as female figures, but I have not limited myself to just those. I try to use a variety of materials, and that helps to show what's available in the sculpture department here, which is just about any material you want," Ali said.

Kate Ali has been a student at LCC for four years and has studied sculpting for three years. This is her second and last year as a sculpting assistant.

"I've applied to several art schools and now I'm waiting," said Ali. "I plan on getting my master's and hopefully becoming a sculpture teacher if there is still enough funding for art."

Ali said that through her exploration of other art schools, she has come to appreciate even more the range of facilities at LCC.

"I've learned how to do everything in this show from the art department," said Ali. "In looking at different schools, I've found that even some of the bigger schools don't have facilities that compare with what's here at LCC."

"I think she has great variety has beautiful craftsmanship," said Ali's sculpting instructor Ellen Tykeson. "I love the fact that she uses humor in her work; it has a very light touch."

This is Means' first year as a studio assistant and his second year at LCC. His 39 pieces in the show range from bowls and vases to jars and mugs. Although this is Means' second show, it is his first show to display all ceramic pieces.



"Political Vessels: Ashes" (above) and other ceramics by Rowen Means, along with "The Wooden Woman" (right) and works by Kate Ali, are on display in the LCC Gallery. Catch "Enjoy It While It Lasts" through March 18.

Photos by Megan Wilson

"As a physical process, ceramics opens a deeper identification into the love of labor and the personal satisfaction derived from the direct interaction with the materials," said Means.

Means says he has been interested in pottery and ceramics ever since he was young.

"When I was younger, I liked the interactive process, I liked throwing a lot also," Means said.

After this year Means said he will continue studying ceramics and pottery, and probably transfer to a four-year college.

"It's great to have creative support like I have at LCC," said Means. "The facilities here are wonderful and I feel extremely privileged to have been a part of that."

"It's fabulous, I like to see the variety of materials and forms, especially in Kate's work," said student Dorene Carroll. "Between the two of them there is variety but also continuity. With Kate's work, there is the reoccurring theme of birds, and Rowen's shapes have style. It's also great to see fellow students recognized in the show."

Ali explains that the name "Enjoy it While it Lasts" has a few different meanings for her.

"This show gives us a close-up view of



what it's like to be artists, on that level, we are enjoying it while it lasts," said Ali. "It's sad for Rowen and I to see the continual cutting of art department funds in Oregon and across the nation. We do need to enjoy it while it lasts, and also call out to the community to give student art a chance."

Gallery hours are from Monday to Thursday from 8 a.m. to 8 p.m. and Friday from 8 a.m. to 4 p.m.

## Winter Term Final Examination Schedule

For the week of March 15 - 20

To find exam time, find the day, then the time the class is held

**Class Days:** MWF or M, W, F, MW, WF, MTuWThF, MTuWTh, MWThF, MTuThF, MTuWF

**Class Days:** TuTh or Tu, Th, TuWThF

Class starts at:	Exam Day:	Exam time:	Class starts at:	Exam Day:	Exam time:
7:00 a.m. or 7:30 a.m.	F	7:00-8:50 a.m.	7:00 a.m. or 7:30 a.m.	F	9:00-10:50 a.m.
8:00 a.m. or 8:30 a.m.	M	8:00-9:50 a.m.	8:00 a.m. or 8:30 a.m.	Tu	8:00-9:50 a.m.
9:00 a.m. or 9:30 a.m.	W	8:00-9:50 a.m.	9:00 a.m. or 9:30 a.m.	Th	8:00-9:50 a.m.
10:00 a.m. or 10:30 a.m.	M	10:00-11:50 a.m.	10:00 a.m. or 10:30 a.m.	Tu	10:00-11:50 a.m.
11:00 a.m. or 11:30 a.m.	W	10:00-11:50 a.m.	11:00 a.m. or 11:30 a.m.	Th	10:00-11:50 a.m.
12:00 p.m. or 12:30 p.m.	M	12:00-1:50 p.m.	12:00 p.m. or 12:30 p.m.	Tu	12:00-1:50 p.m.
1:00 p.m. or 1:30 p.m.	W	12:00-1:50 p.m.	1:00 p.m. or 1:30 p.m.	Th	12:00-1:50 p.m.
2:00 p.m. or 2:30 p.m.	M	2:00-3:50 p.m.	2:00 p.m. or 2:30 p.m.	Tu	2:00-3:50 p.m.
3:00 p.m. or 3:30 p.m.	W	2:00-3:50 p.m.	3:00 p.m. or 3:30 p.m.	Th	2:00-3:50 p.m.
4:00 p.m. or 4:30 p.m.	M	4:00-5:50 p.m.	4:00 p.m. or 4:30 p.m.	Tu	4:00-5:50 p.m.
5:00 p.m.	W	4:00-5:50 p.m.	5:00 p.m.	Th	4:00-5:50 p.m.

**Evening (5:30 p.m. or later) and Weekend Classes:** Examinations scheduled during regular class times.

This schedule does not apply to Downtown Business Education Center Classes



## SPORTS

## Track athletes earn qualifying marks early in season

*Track and field on solid pace after first meet.*

**Shawn Miller**  
Sports Editor

The track and field season kicked into gear March 4-5 in Chico, Calif., for the heptathlon and decathlon athletes. In order to qualify for the NWAACC championships in May, men must tally at least 5,000 points and women 3,000 points in a meet.

On the women's side, sophomore MacKenzie Winkle scored a personal best 4,381 points and took home third place. Freshman Monica Teeple collected 3,678 points in ninth place.

For the men, sophomore Cody Fleming won second place with 6,534 points, freshman Miles Lehto placed third with 6,157 and sophomore Brian Bartow fourth with 5,998. Bartow was battling a quad-strain and Lehto had less than 10 days of practice after playing for the Titan basketball team.

"It is really unheard of for someone

to come out with less than 10 days of practice and score so well," said Head Coach Grady O'Connor. "We were hesitant, but he convinced us to let him compete."

Following the strong qualifying performances in Chico, the Titans took most of the athletes to McMinnville, Ore., for the Linfield Icebreaker on Mar. 6.

"Our throwers really showed well," said O'Connor.

Freshman Judith Burnett placed second with 18'3" in the women's shot put. Burnett also took second in the discus throw with 130' even. Freshman Nick Shannon placed third in the men's shot put (48'9.5"). Freshman Tyler Richardson got fourth in the men's javelin with 180'5".

"Overall, this is kind of a preseason," said O'Connor. "We hope to pick up a couple of athletes for spring term to help strengthen the team. I am hoping we can take care of academics and see where our roster is."

"We have a pretty well-rounded squad."

The next meet is Saturday, March 13 at Mt. Hood Community College.



Photo by Megan Wilson

In preparation for the March 13 Mt. Hood Open, Cody Fleming practices his discus throw.

## Baseball finishes weekend with victory

*Baseball rallies in the second game of a double-header to nab first win.*

**Shawn Miller**  
Sports Editor

Baseball is the second sport at LCC that is scheduled to be dismantled following this year. Volleyball, the first, had an amazing run and finished third at the NWAACC tournament. In their final season, the baseball team has gotten off to a rocky start and look to get back on track in the Spokane Tournament, March 12-14 in Spokane, Wash.

The Titans traveled north to face Lower Columbia Community College in a double-header on March 6.

The first game was a battle, with each team scoring a run here and there, but neither team broke loose.

"It was back and forth the whole time," said Head Coach Rob Strickland. "Our pitching was okay, we had some miscommunication in the infield that cost us two runs."

Those two runs proved to be costly as Lower Columbia pulled off a 7-6 victory.

"It was a little disappointing that we came out in the first game and couldn't get it done," said sophomore captain Kenny Brock.

The second game wasn't much of the battle. After the third inning, the Titans trailed



Photo by Megan Wilson

Freshman pitcher Jesse Nelson practices his throw during a team practice. The Titans will play their first home game April 13 at 1 p.m.

by 10 runs. LCC didn't give up and battled until the finish.

"We held them in check the rest of the game and scored three runs," said Strickland.

It wasn't enough, however, as LCC lost 11-4.

"The starting pitching has been awful," said Strickland. "If we averaged the totals, we would have averaged [allowing] two base runners per inning."

The next day, March 7, the Titans played a double-header against Linfield JV.

The Titans turned in a better performance, but dropped their third straight, 8-4.

"They hit the ball against us really well," said Strickland. "We were a little sluggish."

The second game was still left and this was the game the Titans had been waiting for. The offense looked alive and the pitching got key outs as LCC won their first game, 10-7.

"We managed to come back and get one win," said Strickland. "It was critical."

After one weekend, sophomore Phil Ouellette leads the team in batting average (.385). Brock is second with a .357 average and leads the team in runs batted in with four.

Find the Titan Logo



Hidden somewhere in this week's Torch is another Titan logo, (like this one). Find it and receive a FREE can of pop from your SRC.

## STUDENT RESOURCE CENTER

Located in the Student's First Building, 2nd floor  
AND in the Center Building, 2nd floor

Now offering Snack Packs!

**\$1.75 Morning  
Snack Pack**

Comes with coffee  
and your choice of  
beverage or yogurt and  
a bagel or muffin.

**\$2.00 Afternoon  
Snack Pack**

Comes with a can of pop,  
bag of chips, and your  
choice of a burrito,  
hot pocket, chimichanga,  
or cup-o-noodle soup.

## Daffodil Days!

Purchase daffodils and raise money for the American Cancer Society. Donations will fund cancer research, educational programs, services for cancer patients, and the American Cancer Society. You can also buy daffodils for yourself or have bouquets of daffodils presented to patients undergoing chemotherapy. Bouquets start at \$8. Phi Theta Kappa members will be collecting donations until Friday, March 19. For more information, email Phi Theta Kappa at [sigmazeta@lanecc.edu](mailto:sigmazeta@lanecc.edu), call 541.463.3238 or stop by Building 1, Room 206E (in Student Activities).



If your car is in the parking lot, go ahead and

**Kick yourself.**

Long lines. Frequent back-ups. Jockeying for a parking space.  
**Not cool.**

However, if you take for-credit classes at LCC Main Campus,  
you can get a Bus Pass from LTD, no charge.

**Awesome, huh?**

### **Two ways to get your pass:**

#### ■ **Pick up a Spring Term Sticker!**

Use your bus pass for the first week of classes.

You'll need your LCC Bus Pass with current term sticker  
to ride for the rest of the term. (For spring term, you must  
have your new sticker by April 10<sup>th</sup>, 2004.) Stickers available  
April 5<sup>th</sup> - 9<sup>th</sup>, 8 am to 5 pm, Building 19, Room 117.

#### ■ **Get an LCC Bus Pass:**

Bring your current photo ID and ExpressLane schedule  
to an LCC photo session on March 23<sup>rd</sup>, 29<sup>th</sup> or 30<sup>th</sup>,  
8:00 am - 7:00 pm.

#### **Don't qualify?**

There is a special discount pass  
available for you too, just \$54 a term!

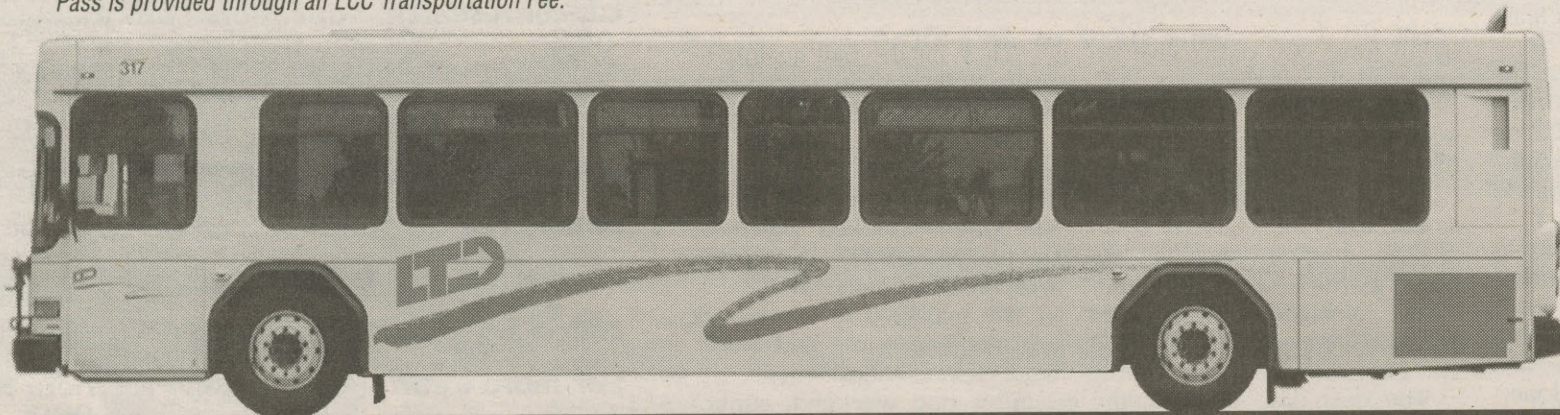
See [www.ltd.org](http://www.ltd.org) for more details.



**Lane Transit District**

*at your service*

\* Pass is provided through an LCC Transportation Fee.





# TILT

## Classifieds

### For Sale

**1994 Sporty 4 door Saturn.**  
CD, tilt, heat/air, 5 speed,  
\$2400 obo. 541-543-8169

**MTX Thunder 6000 10"**  
subs in a Subzero box. Almost  
new, HIT HARD! \$175. Shilo,  
541-221-9091.

**2 lift tickets** for any pass  
except Mt. Bachelor. \$40 for  
both. Phone 541-726-5518.

**Doggie fortune cookies.**  
Oven-baked dog treats  
wrapped in special  
messages. Contact:  
dogfortunes@hotmail.com.

### ASLCC Events

**The ASLCC Clothing Stash**  
will hold their Columbia  
Sportswear Giveaway on  
March 12 in the Center  
Building, Second floor,  
next to the ASLCC Book  
Consignment/SRC. The  
giveaway starts at 10 a.m.  
and ends when the product  
is gone. Your student L# is  
required to participate in the  
giveaway.

**ASLCC presents musician**  
**Annie Rapid** performing  
March 11 from noon to 2 p.m.  
in the Center Building, First  
floor, next to the cafeteria.

### For Rent

**Large room,** mature,  
balanced, quiet, close, clean,  
safe, no pets, non-smoking,  
\$285, newer efficient. 344-  
1964.

### Opportunities

**Internship at Mount**  
**Pisgah Arboretum** Lead  
elementary students on  
field trips. Learn about  
plants, animals and ecology.  
Mornings or afternoons.  
Flexible. Close to campus.  
Great experience. Co-op  
credit and stipends available.  
Call Fran at 747-1504.

### Tutoring

**Enjoy the FREE drop-in**  
tutoring on main campus.  
Come to CEN 210 for  
subjects/locations.

### Roommate wanted

**Mature female massage**  
therapist has room for rent  
in her suite five minutes  
from Lane. \$300 per month,  
share rest of house and lovely  
garden. Marty 344-4370.

## off the mark

by Mark Parisi  
www.offthemark.com



**SCRABBLE BRAND** G<sub>2</sub> R<sub>1</sub> A<sub>1</sub> M<sub>3</sub> S<sub>1</sub>

SCRABBLE® is a trademark of Hasbro in the US and Canada. ©2004 Hasbro. Distributed by Tribune Media Services, Inc. All rights reserved.

E <sub>1</sub>	A <sub>1</sub>	Y <sub>4</sub>	H <sub>4</sub>	R <sub>1</sub>	C <sub>3</sub>	R <sub>1</sub>	RACK 1
A <sub>1</sub>	I <sub>1</sub>	Y <sub>4</sub>	P <sub>3</sub>	B <sub>3</sub>	T <sub>1</sub>	R <sub>1</sub>	RACK 2
E <sub>1</sub>	E <sub>1</sub>	Y <sub>4</sub>	R <sub>1</sub>	D <sub>2</sub>	L <sub>1</sub>	L <sub>1</sub>	RACK 3
I <sub>1</sub>	O <sub>1</sub>	U <sub>1</sub>	D <sub>2</sub>	M <sub>3</sub>	N <sub>1</sub>	R <sub>1</sub>	RACK 4

PAR SCORE 150-160  
BEST SCORE 224

FOUR RACK TOTAL  
TIME LIMIT: 20 MIN

DIRECTIONS: Make a 2- to 7-letter word from the letters in each row. Add points of each word, using scoring directions at right. Finally, 7-letter words get 50-point bonus. "Blanks" used as any letter have no point value. All the words are in the Official SCRABBLE® Players Dictionary, 3rd Edition.

For more information on books, clubs, tournaments and the school program go to [www.scrabble-assoc.com](http://www.scrabble-assoc.com) or call the National SCRABBLE® Association (631) 477-0033.

## ANSWERS TO PREVIOUS SCRABBLE PUZZLE

**SCRABBLE BRAND GRAMS SOLUTION**

B <sub>3</sub>	I <sub>1</sub>	L <sub>1</sub>	L <sub>1</sub>	I <sub>1</sub>	O <sub>1</sub>	N <sub>1</sub>	RACK 1 =	68
A <sub>1</sub>	E <sub>1</sub>	R <sub>1</sub>	O <sub>1</sub>	S <sub>1</sub>	O <sub>1</sub>	L <sub>1</sub>	RACK 2 =	57
A <sub>1</sub>	N <sub>1</sub>	A <sub>1</sub>	R <sub>1</sub>	C <sub>3</sub>	H <sub>4</sub>		RACK 3 =	11
C <sub>3</sub>	A <sub>1</sub>	R <sub>1</sub>	A <sub>1</sub>	V <sub>4</sub>	A <sub>1</sub>	N <sub>1</sub>	RACK 4 =	68
PAR SCORE 145-155							TOTAL	204

SCRABBLE® is a trademark of Hasbro in the US and Canada. ©2004 Hasbro. Distributed by Tribune Media Services, Inc. All rights reserved.

### My bike is missing and I want it returned!!!

I am willing to pay anyone \$100 for my missing bike when it gets returned to me.

Here are some of the distinguishable characteristics even though it may be freshly painted:

It's a Cannondale Mountain Bike with purple grip taped handlebars with stickers that are quite distinguishable. It's a 16 inch men's frame flat bar style with a Shimano front drive system. It has rock shox front suspension fork and has a 26 inch tire size. There are toe clips on the pedals with 21 speeds plus it has Scott AeroBar Style racing handlebars.

If you see anyone riding this bike, if you see this bike anywhere — please call me: 729-0537 or 484-0103, if someone is riding the freshly painted bike — inform them.

I know my bike is feeling very lost and confused and violated right this moment, so I need to get the bike back to its original human rider asap.

less than 10% of  
18-24 year olds vote  
What's up with that?

**Shamrock Village RV PARK**  
Close to college on LTD bus route.  
\$275 plus electric with  
laundry and showers.  
Study by the river.  
541-747-7473 Restrictions apply.

## WHITE FLAG from page 3

integrity to publicly come forward, they were not the sole composition of folks who were offended. Many individuals who were NOT members of the QSA have come forward to speak against the promotion (inadvertent or not) of hate crimes, and you can now add me to that list.

We must also consider that the threat of prejudice-driven violence is very real in our society. While many of us have the privilege of remaining unaware of this reality, some people have to live with that threat every day and may therefore have been too afraid to publicly speak about the way these comments affected them. To act as if the QSA were the only people offended by this article reinforces this fear and further silences people whose voices are already seldom heard.

Liz's voice, however, is heard. Every week it comes through loud and clear. With this public voice comes a great responsibility. While no one is responsible for anyone's actions but their own, I think Liz needs to see that her words possess the capacity to incite. This is a power that deserves to be considered wisely and with much heart.

I stand in defense of the QSA as well as the multitude of others who face discrimination and the often-inferred threat of violence on this campus every day. Speaking of tolerance, consider having to tolerate

that! Showing tolerance doesn't mean allowing yourself to be victimized! I mean, what is that? You tolerate a fly buzzing in your ear, a bad sunburn, or something else that's bothersome but you can't quite get rid of.

Is that really what you think people are asking for? It's a pretty sad statement on campus diversity if that's the best humyn [sic] relations scenario that people can imagine.

One thing we won't tolerate is continued threats of violence and discrimination on this campus! As concerned students, we need to unify and demand more accountability and action when these issues arise. I urge people reading this to speak out. Check out the student groups on campus and get active. Individually, we can be silenced, but collectively, we have a voice!

If this threatening and divisive public discourse continues on such an unhealthy tangent, we will be pushing for more than just a written response from the administration.

I hope the Torch will take the opportunity to remedy this situation now, while there is still a chance for reconciliation. The issue is not to place blame on one group or another. The true issue is that if we tolerate discrimination in any form, then we invite it to manifest in every form, and there are many of us who will not stand back and let that happen.

**GETS THE ADRENALINE GOING. YOURS AND WHOEVER READS ABOUT IT ON YOUR RESUME.**

**AN ARMY OF ONE.**

The Army ROTC Leader's Training Course is a paid 4-week summer experience that marks the beginning of your career as an Officer, a leader of the U.S. Army.

**ENROLL IN ARMY ROTC**  
BECOME AN ARMY OFFICER

To find out more contact CPT Darren McMahon at 541-346-7682. U of Oregon Army ROTC.

**What do I know about me?**

Free birth control,  
supplies and services to  
those who qualify.

1670 High St, Eugene 344-9411  
793 N. Danebo, Eugene 463-9731  
225 Q St, Springfield 744-7121

**Planned Parenthood**

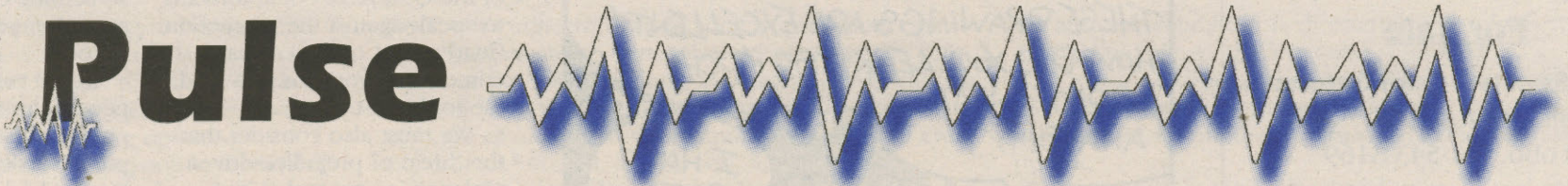
[www.pphisso.org](http://www.pphisso.org)  
[www.wecandobetter.org](http://www.wecandobetter.org)

I'm informed.  
I'm healthy.  
I take care of myself.

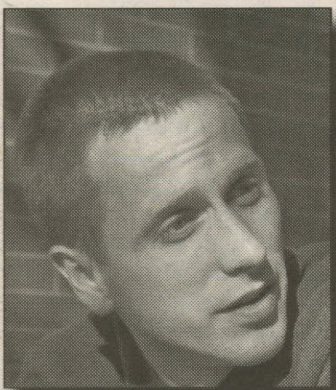


# BACK PAGE

## The Pulse



In the face of budget cuts, LTD will use bigger busses to keep the same number of seats coming to campus but limit the frequency with which trips are made to campus. How will this affect you?



**Ryan Hague**  
PE major

"This won't affect me directly but I think this is bad for students who rely on the bus. I think the service isn't what it could've been so I think it's too bad for those students."



**Rosemary Woodward**  
Music major

"That could pose an inconvenience because time is of the essence as a full-time student."



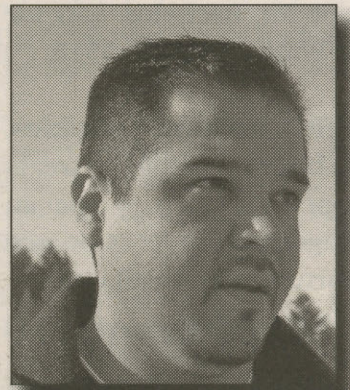
**Chris Belieu**  
Multimedia Production and Design major

"If they reduce the amount of time the bus is available it's going to prevent people from taking certain classes."



**Janet Snyder**  
Family Health Careers instructor

"It won't affect me because I drive most of the time. But I do have bus service around the corner of my house and if there's something wrong with my car I'd like to take the bus."



**Len Riojas**  
Criminal Justice major

"I don't think that would affect me at all. I usually get to school at least an hour early."

Compiled by Gabe Bradley, photos by Megan Wilson

Lane Community College Bookstore Lane Community College Bookstore Lane Community College Bookstore Lane Community College Bookstore

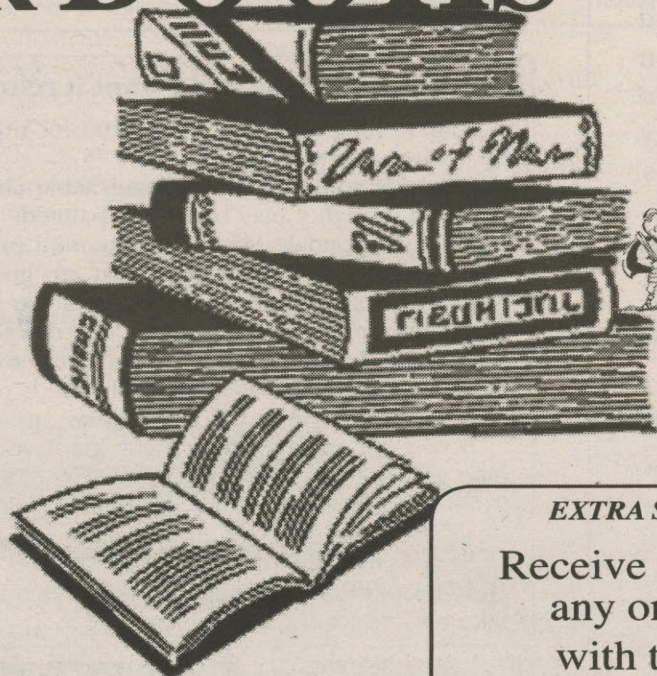
MARCH 15<sup>th</sup> thru 19<sup>th</sup>

# CASH FOR BOOKS

**Monday thru Thursday,**  
March 15, 16, 17 & 18  
**8:00 a.m. to 7:00 p.m.**

**Friday,**  
March 19  
**9:00 a.m. to 4:30 p.m.**

FREE POPCORN! YUM!



We'll buy them back, no matter where you bought them!

**EXTRA SAVINGS!**

Receive 20% OFF  
any one item  
with this ad.

*Exclusions are posted.*

**Lane Community College**  
**Bookstore** *Your Campus*  
**YOUR STORE**



Lane Community College Bookstore Lane Community College Bookstore Lane Community College Bookstore Lane Community College Bookstore

Lane Community College Bookstore Lane Community College Bookstore Lane Community College Bookstore Lane Community College Bookstore

Lane Community College Bookstore Lane Community College Bookstore Lane Community College Bookstore Lane Community College Bookstore