



## Bus schedule changes approved by LTD board

Plans include fewer trips to main campus, but group bus pass remains.

**Travis D. Roderick**  
News Editor

According to the Lane Transit District website, the LTD Board of Directors has approved a variety of service changes due to budget concerns. The changes are now scheduled to go into effect next fall.

As reported in the Torch last term, Lane Transit District was looking at making significant changes to its current bus routes and schedules, including a number that would directly affect routes to and from the Lane Community College campus.

In addition to these changes, LTD has also decided to reduce its discount pass options. The price of the three-month bus pass available to the general public, for example, will increase, though an exact amount for the pass has not been released.

LTD states that the current discount stands at 43 percent of the cash fare price, but the new discount will be reduced to 37 percent.

LTD has decided to eliminate altogether the LCC FastPass that is sold in the LCC bookstore. Originally slated to go into effect at the end of spring term, LTD has decided to keep the FastPass throughout the summer and eliminated next fall.

Rumors of the FastPass elimination have apparently created some confusion among students concerned that LTD was instead eliminating the group bus pass available free to all students who take credit classes and pay the \$15 transportation fee.

Susan Tatar says that this is not the case and that the



Photo by Megan Wilson

LTD has announced that service changes due to budget concerns will go into effect this fall. Many of the changes will affect LCC students.

group pass will be available next year, though she hints that an increase in the transportation fee may be possible.

Students with a current group bus pass are reminded to pick up their spring term stickers in Building 19, Room 117 until April 9, and from Students First! afterwards.

Qualified students who do not yet have an LCC Bus Pass photo ID and did not get a photo ID last week on main campus may get one by first obtaining a voucher from Students First! at main campus or the Downtown Center and then going to the LTD Guest Services at the Eugene Station for their photo.

### LTD bus schedule changes

The changes approved include, but are not limited to, the following:

- Elimination of all 11:40 p.m. weekday departures from Eugene Station. Some trips arriving at the Eugene Station at 11:35 p.m. will also be reduced.
- Reduction of 6 a.m. weekday departures from Eugene Station, including elimination of most 5:55 a.m. Eugene Station arrivals.
- The Breeze will no longer include service on Saturdays.
- Route 77 UO/Eugene Station will be eliminated entirely.
- Route 79 UO/Gateway will reduce service to one trip an hour after the 6 p.m. departure from UO.
- Route 82 LCC/Pearl has already begun implementing articulated buses with larger capacity in order to reduce the number of trips during the peak travel times to four trips per hour. Trips will be timed to meet class start and end times.
- Route 85 LCC/Springfield will discontinue service after 7:15 p.m. Service between LCC and Springfield will still be available on Route 81 LCC/Harris, with a transfer to/from Route 11 Thurston at UO Station.

## Scam artist banned from UO; may have been spotted at LCC

No charges have been made at LCC, but Public Safety urges students to be vigilant.

**Travis D. Roderick**  
News Editor

Lane Community College Public Safety is advising students to be wary of strangers asking for favors and to think intelligently about the situations they put themselves in, particularly in light of a recent scam used to con students at the University of Oregon.

According to a March 15 article in the UO Daily Emerald, non-student Allen Tyrone Reed, a 32-year-old black male, 6 feet tall and weighing 240 pounds, was arrested for theft on the UO campus after tricking student David Seltzer to deposit a false check into his own account and give Reed cash in return.

Reed pleaded guilty to the crime and has been banned from University property. Eugene police officer Randy Ellis told the Emerald that Reed's

record shows that he has allegedly victimized students at Portland State University as well.

According to the incident report, Reed talked UO sophomore Seltzer into helping him deposit his paycheck, claiming the bank wouldn't let him do it because he didn't have identification with him. Seltzer obliged, depositing into his account via an ATM what he was told was a check for \$400. Reed then told Seltzer to withdraw only \$350 and keep the additional \$50 as a 'thank you' for his trouble.

This all happened at the U.S. Bank at 810 E. 13<sup>th</sup> Ave., directly across the street from the West University police station.

Upon further reflection on the matter, Seltzer reported the situation to the bank. The bank checked the deposited envelope and found only an old bus ticket inside.

Reed was arrested on the UO campus later that day.

LCC Public Safety officer Jim Harris alerted the Torch to the

story, stating that Reed has reportedly been seen on the LCC main campus as well.

"One of the [bookstore] staff was in a training seminar downtown and this [story] came up," Harris said. "[The employee] got to see the picture [of Reed] and they recognized him as someone that had been in the bookstore [last term]."

Reed was not an LCC student at the

time. Reed is also accused of allegedly stealing several items from University football players in the Autzen Stadium locker room, including a player's credit card that he used to buy \$285 worth of clothing, Ellis said.

Reed was released from jail due to overcrowding. No reports of his presence on LCC campus have been reported thus far this term.

Harris wants students to know that there have been no reports of Reed, or anyone else



Allen Tyrone Reed

See **SCAM** page 3

## Campus visit set by noted author

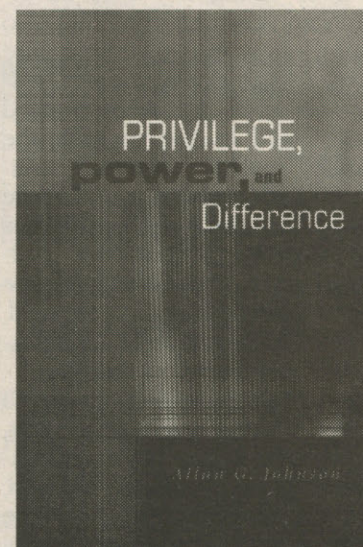
Speech, workshops highlight Reading Together program.

**Aidan Keuter**  
Staff writer

Allan Johnson, author of "Privilege, Power and Difference," will be on campus April 22 and 23 to interact with students and staff during a series of events planned around his visit. Johnson's book is the current reading material for the campus-wide Reading Together program.

The Reading Together program uses books as a mechanism for engaging in dialogue about important issues. The organizers hope that through reading the books and participating in the corresponding activities, the campus and larger community will be exposed to different ideas, topics and life experiences.

LCC started the Reading Together program in 2003



because the school received a donation from a community member who wanted to help the school offer a broader experience for students akin to a larger liberal arts university.

After soliciting ideas from the campus community on how this could be accomplished, the Learning Communities Leadership Team decided that Reading Together,

See **READING** page 3

### INDEX

OPINION	2
NEWS	3
AGE	4
SPORTS	5
TILT	7
BACK PAGE	8

### WEEKEND WEATHER

Sunny and  
Warm  
74/40



Sunny and  
Warmer yet  
75/40

### Coming next week:

Committee established to arbitrate traffic citations



# OPINION

## Empty pockets and heavy hearts

I feel as though every time I open the Torch, I am faced with some sort of bad news for students – budget cuts, tuition increases, proposed fee increases and money being spent carelessly.

Maybe it's just my imagination. Or perhaps I am biased. One thing is for certain: As a full-time student on a budget, I am fed up with throwing money down a bottomless hole.

LCC is one of the most expensive community colleges in Oregon. Education in our state has been seriously jeopardized due to budget cuts. Even as I write this I am saddened that programs and classes have to be cut, and up until now I have reluctantly supported tuition and fee increases in the hopes that they would stabilize the college. But I have yet to see any real evidence that increases have done this college good. After hearing of the recent proposition to add a \$5 sports fee to the student ballot in May, I am withdrawing my support.

All students pay fees to support organizations like OSPIRG and ASLCC whether they are personally involved or not. But I feel that a campus-wide fee to support sports is crossing the line. I know that many will disagree with me, but I do not consider sports essential to education at LCC; at least they aren't to mine.

If yet another fee is absolutely necessary, I feel that a better alternative would be to charge

a participation fee to students who are active on sports teams (if there is already a fee, raise it), and perhaps raise admission prices at sporting events for non-LCC students.

I'll be the first to admit that \$5 a term isn't much, but there are many more things I'd rather see that money go to. A little increase here and there really adds up fast.

If all measures pass in May, the student activity fee will go up over \$11.44. When will it be

enough? Many students have already had to leave LCC because they cannot afford to attend. More and more are being forced to turn to financial aid in a last ditch effort, which is already stretched thin. Important classes and even whole degree programs have been cut. I am lucky if I get decent help when I call Students First! (another complaint I'll save for some other time).

I believe that there would be fewer problems if the LCC administration would look within the system for solutions instead of constantly making the students bear the burden.

And even though the recently purchased sculpture was paid for with donation and fund-raising money, I believe that this was a poor decision. There are other necessities that could have benefited from that same funding.

We students have two major outlets for our voices: the Torch and the ballot. We need to utilize both. It's time to let the administration know that we are sick of our money being misused.

### GUEST COMMENTARY

**Alisha Mobley**  
LCC Student

## Not so ugly ducklings appear on The Swan

Every time I think reality TV has hit rock bottom, it digs a deeper hole. What's my latest "reality" TV gripe? Fox's The Swan. For those who haven't heard, here is the basic premise: 17 "ugly" women were chosen for complete overhauls — mind, body and spirit. Each woman has a team of experts, including a coach, a therapist, a trainer, cosmetic surgeons and a dentist, who mold their new human Barbie dolls into beauty pageant contestants. Two women are featured per episode, where at the end only



**WHAT THE DUCK?**

**Liz Mayfield**  
Managing Editor

one is chosen to compete in the beauty pageant where one will be named "The Swan." The loser, as the reality show rule goes, walks away, head dangling in shame. All this seems to be under the guise of "helping" these women become better, more confident, and so on with all the heart-warming excuses for such a disgusting display. At least that's how some viewers perceive it according to the message boards.

Now, if Fox was really concerned about helping women with self-esteem issues and such, they wouldn't put it on TV and they wouldn't call these women ugly ducklings. That's just mean. However, we all know that it's not about "helping," it's about ratings. Some people just happen to think it's a great and interesting show, while others think it's a sign that the world is ending. Still, others just wish they were actually on the show. Now that's the saddest part of all. I could go on and on about how it's a shame the way the media portrays unrealistic images of women and shames us all into wanting flatter stomachs and bigger boobs, so I will.

I'm a victim of popular culture just like the next girl. I stand in front of the mirror grabbing my flab, pulling it here and there, standing this way and that, trying to figure out how I'd look with a flatter stomach, with well defined abs, with bigger boobs, with longer legs, with better hair, with whiter teeth, with smoother skin, with, with, with. Arg. So yes, I look at the Victoria's Secret models wishing I looked more like them, but generally I'm happy with the way I look and the status of my life, so maybe I just don't understand the plight of these swan-wannabes and how winning a Fox beauty contest will somehow part the gloomy clouds and make their husbands and boyfriends love them more.

The thing that bothers me the most is that the women on the show aren't actually ugly. They are average. They look like any other Jane walking down the street. In fact, on the website, they aren't wearing makeup and their hair isn't done. From this I conclude that they were made to look worse than they actually do just for the show. Of course the producers had to pick people who had potential to be really beautiful in the first place. But most of that can be accomplished with an Oprah-style makeover — the no-cutting kind.

That's why "The Swan" is awful and "Extreme Makeover" isn't. The contestants on Extreme Makeover are usually trying to overcome an unusual physical deformity or premature aging - things that make them stand out from the crowd, things that they were teased for when they were young. They get the surgery to blend in, not to look better than everyone else, but just to look like everyone else. The contestants on "The Swan", however, must think they are entitled to look better than the rest of the world, when they don't look too bad to begin with. Maybe it's just me, but that's irritating.

So boo to Fox for exploiting women who want to be hot. And boo to the women who are willing to have their faces cut open so the Fox executives can buy bigger mansions. Go see Dr. Phil instead.

### Letters to the Editor

#### Get out and vote

With the onset of student elections this spring, the key to a successful outcome will be participation in the elections. Last year, in a school of over 15,000, less than 700 students voted. Voting not only advertises an educated mind, but also shows how much students care about who represent them.

Last year, we were blessed with solid leadership with the ASLCC president and vice president Rebecca Hill and Rustie Redmond. But it will be up to us to ensure continued good leadership in the future. So let's vote for leaders who are well read, with diplomacy skills, compassion, intelligence and ability.

Let's elect leaders who will listen to the average student, leaders with the drive and energy to make things happen, leaders who strongly believe in equal rights and opportunity for all, leaders with courage that will take every issue without pause, leaders who believe in unity through diversity, as well as the capability and quality of all students, leaders who will not shy away from difficult challenges, but embrace all of

them with a radiant optimistic outlook. Above all, we need leaders that truly emphasize dedication and true servant leadership. So let's all vote!

**Tom Bush**  
LCC student

#### Textbook prices rising fast

Thank you for your past coverage on the issue of textbook prices that OSPIRG has been speaking out against. As a student I feel this is an important issue not only to myself and other students but also a concern of future students no matter their age. If publishing companies are allowed to get away with these growing prices today, there is no telling what outrageous price future students will be paying five years down the road or even further along than that. Many students are ignorant of what is happening to them and I feel that not only should they be concerned with this issue but voice their concern.

**Adam Davis**  
LCC student



### MACK WORLD

**John Mackwood**  
Columnist

## Easter is almost here

When I listen to classical music, there's no more aching — the pain is long gone.

A good woman always gives a good kiss. A man does a lot of thinking before you bite your last sandwich. Also bite your lips and your own food and your own dinner. A woman says you're thinking with your stomach.

Be more careful. Some bees will come out before too long, anytime, soon.

Roger Rabbit is your favorite cartoon. Happy Easter Sunday! A cartoon rabbit eats carrots in a sandwich bag. It's always good to eat with lots of water, work out and go with the rabbit to go grocery shopping.

At the Albertsons store you pay a lot more for carrot cake than go home for ten weeks with no candy. Happy Easter Sunday!

Editor's note: John Mackwood is a G.E.D. student at Goodwill in Springfield. John writes his column with the help of a Torch editor.

### THE TORCH

The official student-managed newspaper of Lane Community College is published every Thursday

#### Submission Guidelines

Letters to the editor should be limited to 250 words. Commentaries should be limited to 750 words. Please include the author's name, phone number and address (address and phone number are for verification purposes only and are not for publication.) The editor in chief reserves the right to edit letters and commentaries for length, grammar, spelling, libel, invasion of privacy and appropriate language.

### Editorial Board

Gabe Bradley.....	Editor in Chief
Liz Mayfield.....	Managing Editor
Travis D. Roderick.....	News Editor
Shawn Miller.....	Sports Editor
Melissa Vandever.....	A&E Editor
Trisha Lewis.....	Asst. A&E Editor
Megan Wilson.....	Photo Editor
Sean Hoffman.....	Asst. Photo Editor
Maria Lance.....	Production Manager
Noah Rademacher.....	Asst. Production Manager

**Advertising Manager**  
Shannon Browning

**News & Editorial Adviser**  
Frank Ragulsky

**Production Adviser**  
Dorothy Wearne

### Contact Us

Editor in Chief	463-5655
Newsroom	463-5881
Production	463-5109
Advertising	463-5654
Email:	torch@lanecol.edu
Mail:	The LCC Torch, Bldg. 18 Rm. 218 4000 E. 30th Ave. Eugene, OR 97405



# News

## Career fair comes to campus

*Event will allow employers the opportunity to reach out to college market.*

**Aidan Keuter**  
Torch staff writer

LCC will be hosting a career fair in the cafeteria from 10 a.m. to 2 p.m. on Wednesday, April 14. Forty businesses, both local and national, will have booths set up to talk about jobs and to also educate students about different industries and fields.

Jackie Bryson, adviser for Career and Employment Services, says it's a good opportunity for people with all kinds of employment needs to come and explore what possibilities await them outside college.

"The fair is for students graduating

and entering the workforce and also students looking for summer work," she said. "There will be all different kinds of businesses there with different expectations [in terms of employee needs]."

Students are advised to come prepared with resumes and be ready to ask and answer questions.

A series of workshops for all students will continue both before and after the fair, sponsored by Career and Employment Services. April 14 will see a workshop about the "Monster-Trak" website, how to use it and how it can help students track jobs and get internships. That same day there will also be a resume workshop; both will be held in Building 19 before the fair starts.

First Tech Credit Union is co-sponsoring the event with LCC. The credit union is new to the area and wants

to reach prospective new employees and also raise awareness for potential new customers. This is the first year LCC has had a sponsor for the career fair and used the extra money for the workshops and advertising for the event.

Bryson encourages students in need of employment to come and take advantage of the resources they have available. The fair is open to all LCC students as well as the public. Door prizes will be given away throughout the event.

Some of the business attending include First Tech Credit Union, Country Coach, Jerry's Home Improvement, Symantec, and more. For more information contact Career and Employment Services in Building 1, Room 102 or by phone at 463-5167,

## READING from page 1

with its visits by authors and various other cultural events such as plays and dances, was the best fit for LCC per the wishes of the donor and the limitations of the campus.

The two books used thus far, "Privilege, Power and Difference" and "Montana 1948," by Larry Watson, were chosen because both deal with diversity. Diversity is a core value of LCC and was chosen to be the focus of this year's program.

Johnson's visit to campus will be the culmination to the first year of the program. Ellen Cantor, Reading Together program coordinator, says it's been a success.

"At this point for fall and winter terms we've had over 40 classes use these books. That's pretty good for the first year of the project. And in most cases they're reading the whole text," Cantor said, adding that the main

theme of both texts, diversity, can be adapted for many different sorts of classes.

A dance class has even worked on choreographing a sequence inspired by Johnson's book and will perform it for the author during his visit. In the fall, "Montana 1948" was adapted by the LCC theater faculty and produced as a play. All seven of its performances sold out.

"It's been really amazing how people, instructors and their classes have used the book in so many different ways. ['Privilege, Power and Difference' works] as a sociology text, English, political science ethnic studies, performing arts," said Cantor.

Johnson will be in Eugene and on campus Thursday and Friday, April 22 and 23. On Thursday from 10 to 11:30 a.m. he will give a keynote presentation titled "Unraveling the Knot of Privilege" in the theater in Building 6.

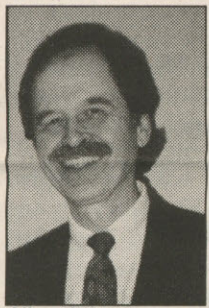
Johnson will also hold a workshop that afternoon, from 2:30-4:30 p.m. in the conference center in building 19, called "Exploring Privilege in Ourselves and the World." Cantor

says that the workshop will be more intimate and provide for more interaction between the author and audience members. Friday will be an in-service day for students, but Johnson will spend the day on campus with staff and instructors.

Cantor hopes that students who aren't in class during those times, even those who haven't read the book, will come and see Johnson speak. She also hopes that instructors can find the time to bring their classes to the presentations.

Johnson is a sociologist and professor from Connecticut who often travels to schools as a speaker addressing the issues raised in his books. "Privilege, Power and Difference" is primarily about group privilege and the benefits enjoyed by those labeled as members of a group.

Posters will be put up in the coming days to promote Johnson's times on campus. Anyone with questions about Reading Together, how to get involved or ideas for next year's book can contact Ellen Cantor at [cantore@lanecc.edu](mailto:cantore@lanecc.edu) or at 463-5118.



Allan Johnson

## SCAM from page 1

for that matter, trying similar crimes on LCC property, but that if Reed is seen on campus, students need to be aware of his history.

"He has been identified as being in the [Main Campus] bookstore before," said Harris. "It's on public record that he has pleaded guilty to the charges. It's enough of a concern that we want people to be aware of it."

"In the [Emerald] article here," Harris continues, "[Johnson befriends Seltzer by saying] he's going to help him get a job and had him fill out an employment application. If you look at the questions on an employment application, what is missing that would prevent you from getting a fake I.D. out of that? Nothing. That's everything you would need."

"If you get an offer of a deal that is too good to believe, that's your first clue. Any time an opportunity to get a good deal comes up, think about it... When someone's asking you to put a deposit in your account and you don't see what is going in, and you don't know how to [contact] this person, that's a real big red flag."

"We have no confirmation that he's committed any crimes on this campus, so we're not alleging that. All we're saying is, in the event that he tries to pull something like this, that students be aware of it and they need to let us know as soon as they can ... so that we can follow up and prevent him from doing the same kinds of scams on our campus."

**Want to earn \$30 an hour  
delivering newspapers?  
No joke. Call Gabe at  
463-5655 to find out how.**

## April 12 is National Licorice Day

### Quick Facts about Licorice

Licorice's botanical name comes from the Greek words meaning "sweet root."

Research has shown that licorice helps treat and relieve the pains that accompany certain types of ulcers, and it is good for the adrenal glands.

The ancient Egyptians used licorice as a pharmaceutical and copious supplies were found in King Tut's tomb. Egyptian hieroglyphics record the use of licorice as a popular beverage among the men of the time.

## FYI . . .

**In order to provide Students First** representatives with much needed additional training, Students First announces new hours beginning spring term: Monday and Tuesday, 8 a.m. to 6 p.m.; Wednesday, 10 a.m. to 5 p.m.; Thursday, 8 a.m. to 5 p.m.; Friday, 10 a.m. to 5 p.m. Students First will be open from 9 a.m. to 1 p.m. the first two Saturdays of the term.

**The Spanish-Only Table** will meet this term on Fridays from 1-2 p.m. in the cafeteria near Student Health. Look for the tent-sign on the table, and join the group to speak and listen in Spanish. All skill levels are welcome - we'll help each other. There is only one rule: Once you sit down, speak only Spanish! For more information or to be included on the e-mail list, contact Judy McKenzie at [mckenziej@lanecc.edu](mailto:mckenziej@lanecc.edu).

**April is National Community College Month.** In celebration, on each Friday in April, the Bookstore will give out free popcorn to everyone wearing a LCC shirt or hat. For more information contact Vicki Colley and 463-5772.

**Attend OSPIRG's general Interest meeting** and learn about their campaigns to protect Oregon's forests, fight hunger and homelessness, stand up for the rights of renters, reduce the cost of textbooks and register student voters. Take action on Thursday April 8, from 3-4 p.m., Building 4 room 106. For more information contact Samantha Rodgers at 463-5166 or [srodgers@ospirgstudents.org](mailto:srodgers@ospirgstudents.org).

**Over 200 high school students** will be on the main campus on April 14 from 8:30 - 11:30 a.m. for a Professional Technical Careers Exploration Day. Funded by a Perkins grant, this day will allow students to participate in a hands-on, interactive activity in a career area of their choice. Students will also attend an information session on college and career topics. If you find any lost students on April 14, please direct them to the Center for Meeting and Learning lobby.

**Construction of a work bridge** over the Willamette River will close the northbound off-ramp and one lane of traffic from Interstate 5 to Franklin Blvd. (Exit 192) from 6:30 p.m. April 14 to 6:30 a.m. April 15. The single-lane off-ramp will close to allow the contractor to place concrete beams on the support columns. Southbound traffic will not be affected. The Glenwood Interchange at Exit 191 will not be affected; drivers may use this exit to Franklin Blvd. The Oregon Department of Transportation advises commuters to watch for traffic signs and add several minutes to their travel schedules.

**The Bloodmobile** will be on the main campus Thursday, April 15 from 9 a.m. to 3 p.m. If you're interested and are eligible to donate blood during this campus visit, please call or e-mail Judy Ann Fuller, ext. 5564 or [fullerj@lanecc.edu](mailto:fullerj@lanecc.edu) and identify the time you prefer to donate. A member of the LCC Blood Drive Coordinating Committee will contact you to confirm your appointment. The entire process takes only 45 minutes. Donors must be 16 years of age or older, be in good health, weigh at least 110 pounds, and must wait eight weeks since the last donation. Reasons a person cannot donate include: a history of hepatitis, being an insulin-dependent diabetic, having certain respiratory or cardiac conditions, or testing positive for the HIV virus. Some medications and antibiotics may disqualify a potential donor. If you have a personal question about your eligibility to donate, call LMBB at 484-9111 and ask to speak with a nurse.



# ARTS & ENTERTAINMENT

## New exhibit lends hands to heal wounds

*The repetition of white hands is a personal exploration of an artist's past.*

**Melissa Vandever**  
A&E editor

Rows and rows of cupped hands fill the floor of the art gallery for this month's exhibit, "MEM: memory•memorial/no. 3 earth." The exhibit is unique because each of artist Naomi Kasumi's sculptures are exactly the same, at least at first glance.

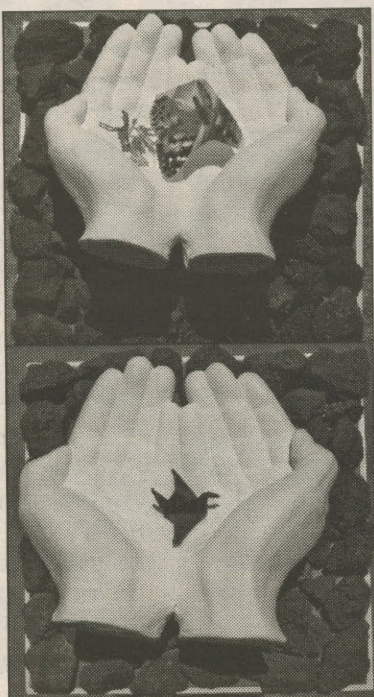
The pristinely white hands sit on beds of rough rock on pedestals of different heights. On taller pedestals near the back, some of the hands are holding various small objects — a butterfly, for example, or a paper crane.

This exhibit is part of a series of exhibits in which Kasumi uses repetitive art of different types to explore her own personal trauma.

On April 1, Kasumi gave a lecture and slide show explaining this exhibit and the others that have preceded it.

"This memorial monument and video share the truth of my experience of having an abortion in May 1998," said Kasumi in her artist's statement. "They are part of a series of memorial pieces that represent my life, experience, memories and feelings over the past years."

In the lecture Kasumi dis-



cussed another of her exhibits, "Third Voice," from 1999. The exhibit was made up of nine books that included medical records from her abortion and ultrasounds from before and after.

"[That] work was not about the pro-life/pro-choice controversy, but it became controversial because it contained the names of the doctors and nurses involved," said Kasumi. "It was my first experience with that controversy and it encouraged me to continue."

Kasumi left the exhibit up, but changed the documents so names were not visible.

"In the United States, the topic of abortion is usually not discussed except in the context



Photos by Megan Wilson

Sculptures by Naomi Kasumi will be on display in the LCC Art Gallery through April 22. The exhibit, titled "MEM: memory•memorial/no. 3 earth," features a series of identical cupped hands, some empty, some holding small objects. The objects are hidden towards the back, which encourages viewers to move in and through the exhibit to see it all.

of the polarities of pro-life and pro-choice," said Kasumi. "The reality of living through the experience and complex feelings that are unique to anyone who makes the choice to have an abortion are seldom shared."

Kasumi is originally from Kyoto, Japan, but has been living in the U.S. since 1994. She attended both LCC and UO and

received her MFA in visual design in 2002. Kasumi now teaches at Seattle University and has appeared in art shows in Seattle, Chicago, Corvallis, Portland, Eugene and Denver.

"I'm always amazed by the energy and enthusiasm in each project she accomplishes; I'm pleased to see the growth in each project," said LCC art in-

structor Satoko Motouji. "She is full of energy and has a great sense of humor."

"MEM: memory•memorial/no. 3 earth" will be shown through April 22. Gallery hours are Monday through Thursday, 8 a.m. to 9 p.m. and Friday, 8 a.m. to 4 p.m. For more information contact Kasumi at info@naomikasumi.com.

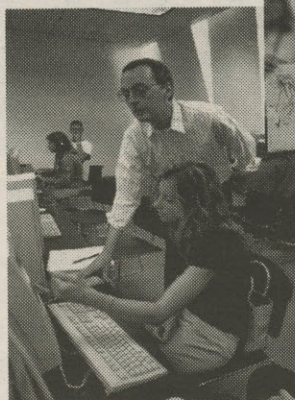
## READY FOR YOUR BACHELOR'S DEGREE?

The Art Institute of Portland, located in the heart of the Pearl district, offers a growing list of degree programs, scholarships and financial aid to those who qualify. Call to find out more about articulation agreements with community colleges.

Programs of study available:

- Advertising (BS)
- Apparel Design (AA, BS) ☾
- Interactive Media Design (AA, BS) ☾
- Interior Design (AA, BS)
- Design Management (BS) - New!
- Digital Media Production (BS)
- Game Art & Design (BS)
- Graphic Design (AA, BS) ☾
- Media Arts & Animation (BS) ☾
- Visual & Game Programming (BS) - New!

(AA=Associate of Arts, BS=Bachelor of Science)  
☾ evening program available



Explore your options for continuing your education after community college. It's not too late to sign up for spring quarter, so call 503.228.6528 to set up an appointment with one of our Admissions Advisors or visit us on the web at [www.aipd.artinstitutes.edu](http://www.aipd.artinstitutes.edu)

**The Art Institute of Portland®**

1122 NW Davis Street • Portland, OR 97209-2911  
503.228.6528 or 888.228.6528 • [www.aipd.artinstitutes.edu](http://www.aipd.artinstitutes.edu)

## A&E Calendar

### April 9

**Women's Center Video:** "Off the Straight and Narrow" is about Lesbians, Gays and Bisexuals on TV. The Women's Center is located in Building 1, Room 202. For more information contact Paula Sena at 463-5352.

### Ongoing

**MEM: Memory-Memorial/No.3 earth:** The exhibit features sculpture by Naomi Kasumi and will be on display in the LCC art gallery through April 22. The art gallery is located downstairs in Building 11. Gallery hours are Monday through Thursday, 8 a.m. to 9 p.m. and Friday, 8 a.m. to 4 p.m. For more information contact Mary Jo Workman at 463-5411.

### Find the Titan Logo

Hidden somewhere in this week's Torch is another Titan logo, (like this one). Find it and receive a FREE can of pop from your SRC.

## STUDENT RESOURCE CENTER

Located in the Student's First Building, 2nd floor  
AND in the Center Building, 2nd floor

### Now offering Snack Packs!

#### \$1.75 Morning Snack Pack

Comes with coffee and your choice of beverage or yogurt and a bagel or muffin.

#### \$2.00 Afternoon Snack Pack

Comes with a can of pop, bag of chips, and your choice of a burrito, hot pocket, chimichanga, or cup-o-noodle soup.



## SPORTS

## Lane edges Clark College in a classic dual meet

Close competition helps build team morale and confidence.

**Roland Ford**  
Torch staff writer

The Lane Community College Men's and Women's Track and Field teams narrowly defeated Clark College, 90-87, in a rare dual meet on April 3.

The extremely close competition came down to the wire and was decided after the last men's javelin throw was marked.

"This was the best experience I've had in my six years as a head coach," said Titans Head Coach Grady O'Connor. "The win was nice, but the great thing was how everybody came together as a team."

The meet was still up in the air late into the afternoon as both teams and their supporters packed the javelin throwing area. LCC needed to place first and fourth in the men's javelin to take the meet but Clark was favored in the event.

Each throw was accompanied by a resounding clap and chant from the enthused crowd. Clark seemed like they had it wrapped up after Tyler McCoy's second throw was marked at 187' 11". But LCC's throwers proved ready for a fight.

On his fourth throw, LCC freshman Tyler Richardson tossed a personal record by 17 feet. His mark of 197' 7" was good enough to win the event

and the overall meet for the Titans.

"I knew I was feeling good today, but I still can't hardly believe that throw," said Richardson after the meet. "It was great to have everyone over there cheering us on. Usually no one gives a care about the javelin."

LCC freshmen Kenny Westenhause and Mike Baly also stepped up in the javelin, placing third and fourth in the event with marks of 181' 6" and 171' 8" respectively.

The excitement at the javelin pit was preceded by an amazing finish in the men's 4x400 relay race minutes earlier. LCC won the thrilling race by a hair, setting the stage for the great finish in the javelin.

Things seemed to be slipping away for the Titans as Clark built a 50 meter lead by the last leg of the race, however, LCC wasn't finished. With the fate of the meet on his shoulders, Titan freshman sprinter Phil Alexander took the baton with strong intent.

As the runners came around the second turn, Alexander had closed the gap to 10 meters. Then the crowd exploded as Alexander passed the Clark runner just before the finish. LCC astonishingly won the race by one-tenth of a second, with a time of 3 minutes 23.4 seconds.

"You just don't see that happen at the college level," said O'Connor about the race. "That was amazing to come back from 50 meters down."

"I felt like I had a chance to



Photo by Sean Hoffman

Miles Lehto led off a spectacular race in the Men's 4x400 meter relay Saturday April 3 at UO's Hayward Field. The Titans won the race by only one-tenth of a second with a time of 3 minutes 24.3 seconds after being down by 50 meters in the final leg.

catch him," said an exhausted Alexander after the race. "I just kept running hard and I did it. That was awesome!"

The outcome of the meet hinged on the last two events, but the sunny day in Vancouver was filled with many other highlights for the Titans.

For the women, sophomore MacKenzie Winkle was a work horse, scoring 24.5 points for the Titans in seven events. Winkle won the long and triple-jump events and scored personal bests in the high-jump (5' 2"), 100-meter hurdles (15.2), and the 100 meter dash (12.4). Winkle and Clark's Katie Miller

battled all day and will continue to do so as they compete for the heptathlon championship next month.

Other highlights from the women's side included freshmen Jaala Osban and Monica Teeple who took first and second in the javelin, respectively. Their marks of 128' and 122' 3" are both NWAACC conference meet qualifiers. Freshman Judith Burnett also performed well, winning the women's discus competition with a personal best (131' 9").

A great day for the men's team was highlighted by the 200-meter race. Alexander tied

a 17-year school record held by Andrew Banks with a time of 21.1 seconds. Freshman Paris Ramsey also had an outstanding race with a time of 21.3 seconds. Freshman Kalin Kelley also won his heat, running a personal best of 22.3.

Other worthy accomplishments for the men included wins in the discus and shot put events. LCC decathlete sophomore Cody Fleming threw the discus 141' 9" and sophomore Chris Squires threw the shot 47' 1.5".

"You could talk about all of the great individual performances for hours," said O'Connor, "There was PR's [personal records] in almost every event. But the real story today was how the team molded together and supported each other."

"These dual meets are rare and special. They bring out the team competition that I love so much," O'Connor concluded.

Others agreed. "Dual meets bring the team closer together," said Fleming. "It's great to see teammates feeding of each other like that."

"It was a special moment," added throwing coach Hal Werner. "I'm very proud to be involved with these athletes."

The Titans continue their season with new enthusiasm as they compete in the Oregon Mini-meet Saturday, April 10 at Hayward Field.

"I can't wait for this weekend," explained Fleming. "Emotions are high anytime you compete in Eugene!"

## Titans on roll after ugly start to season

The Titans face Chemeketa for second place in the standings.

**Shawn Miller**  
Sports Editor

One month ago, the Lane baseball team looked dismal, posting a 1-3 record and no sign of offense. What a difference time makes.

Now the Titans have won two tournaments, are tied for the league lead and are playing with more confidence and swagger than ever as they head into their next double-header, at Chemeketa on Saturday, April 10 at 1 p.m.

The Titans traveled to Washington for the Spokane Tournament held March 12-14. LCC defeated Everett, 12-3, followed by a sweep of Centralia, 15-4 and 13-8.

Less than a week later, the Titans played in the Ontario Tournament in Eastern Oregon. The opener looked like the Titans of old as they fell 11-0 to Treasure Valley. That was just an off day, as LCC rolled over Gray's Harbor (6-0) and Boise State (11-1) the following day (March 20). The heat continued on the final day of the tournament, as the

Titans defeated Prairie Academy (7-6) in a battle, before taking revenge on Treasure Valley in the championship game (5-1).

Winning seven games in nine days seemed to provide a boost for the Titans as they headed into league play. LCC opened on the road against Linn-Benton on April 1.

Sophomore Garrett Stembridge pitched a complete-game shutout and sophomore Donny Bradetich hit a three-run homer in the top of the eighth inning as the Titans won, 5-0.

The second game wasn't as spectacular. The Titans continued to play solid defense, but managed only two hits as Linn-Benton evened the series with a 3-0 victory. Titans Freshman Mike Bauman received the loss after pitching a complete game.

Two days later, the Titans faced Southwestern Oregon with offense on their minds. Sophomore Jared Rascon battled for the win as sophomore Matt Skundrick hit a seventh-inning grand slam to push the Titans to a 10-6 win.

Sophomore Cole Chapman went six and two-thirds innings strong for the Titans in the second game, allowing only two runs. LCC got enough runs as they swept the series with a 6-2 route.

## Shift DOWN Your Rate

► Lower your payments -- Get some cash back

When the economy inches up, so do rates. That's why now is the time to refinance your auto and lower your payments with a rate as low as **3.69% APR\***. To show you just how serious we are, we're willing to pay you to do it. You won't get charged a cent to refinance (title transfer fees covered by First Tech for all refinances over \$10,000), **and we'll pay you 1% of your loan amount.\*\***

Call 800.637.0852 to lower your monthly payment and get the rebate, stop by any branch or apply online at [www.1sttech.com](http://www.1sttech.com).

Refinance amount	1% cash back rebate
\$10,000	\$100
\$20,000	\$200
\$50,000	\$500

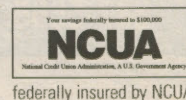
\* Rates range from 3.69% to 11.49% based on credit qualifications and model year of the vehicle. These rates also represent a .50% discount. To receive the discount, members must choose the automatic payment option. Rates and terms offered are subject to change without notice at any time.

\*\* First Tech will deposit 1% of the refinanced auto loan amount to your First Tech Credit Union account. Offer only valid for auto loans refinanced from other lenders. Offer valid from 4/1/04 to 5/15/04.

Eugene, Springfield, Oakridge | [www.1sttech.com](http://www.1sttech.com) | 800.637.0852

as low as  
**3.69% APR\***

No fees, cash back and refinance options up to 72 months.





If your car is in the parking lot, go ahead and

**Kick yourself.**

*Long lines. Frequent back-ups. Jockeying for a parking space.  
**Not cool.***

*However, if you take for-credit classes at LCC Main Campus,  
you can get a Bus Pass from LTD, no charge.*

***Awesome, huh?***

### ***Get your pass:***

#### ■ ***Pick up a Spring Term Sticker!***

*Use your bus pass for the first week of classes.*

*You'll need your LCC Bus Pass with current term sticker  
to ride for the rest of the term. (For spring term, you must  
have your new sticker by April 10<sup>th</sup>, 2004.) Stickers available  
April 5<sup>th</sup> - 9<sup>th</sup>, 8 am to 5 pm, Building 19, Room 117.*

#### ***Don't qualify?***

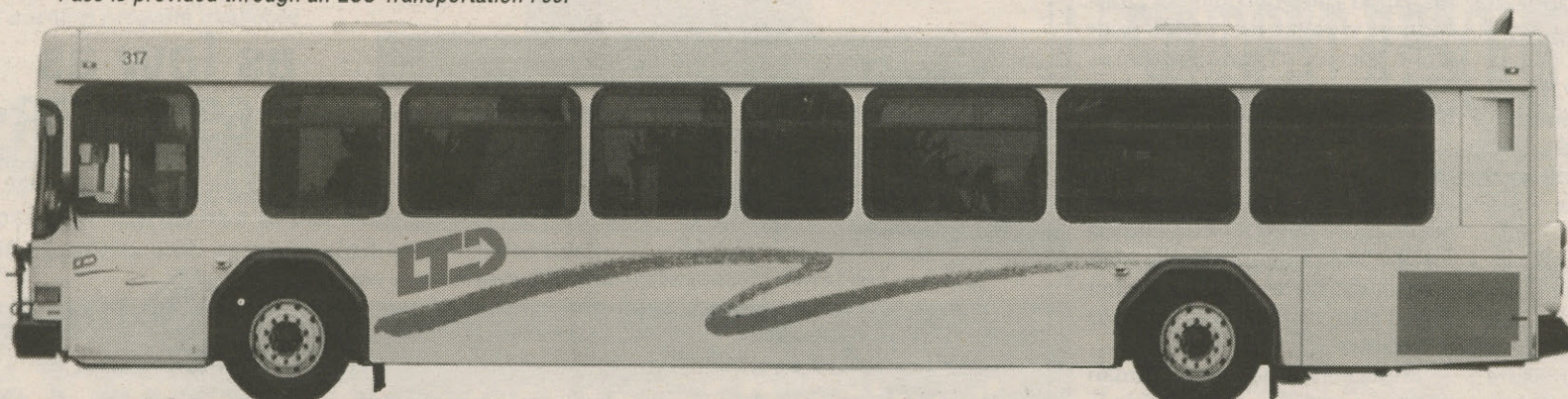
*There is a special discount pass  
available for you too, just \$54 a term!*

*See [www.ltd.org](http://www.ltd.org) for more details.*



**Lane Transit District**  
*at your service*

\* Pass is provided through an LCC Transportation Fee.



687-5555 Guest Services

[ltd@ltd.org](mailto:ltd@ltd.org) E-mail

[www.ltd.org](http://www.ltd.org) Internet

800-735-2900 TTY - OR



# TILT

**SCRABBLE** BRAND

SCRABBLE® is a trademark of Hasbro in the US and Canada. ©2004 Hasbro. Distributed by Tribune Media Services, Inc. All rights reserved.

E <sub>1</sub>	I <sub>1</sub>	S <sub>1</sub>	M <sub>3</sub>	D <sub>2</sub>	T <sub>1</sub>	M <sub>3</sub>	RACK 1
A <sub>1</sub>	A <sub>1</sub>	E <sub>1</sub>	D <sub>2</sub>	M <sub>3</sub>	L <sub>1</sub>	G <sub>2</sub>	RACK 2
A <sub>1</sub>	E <sub>1</sub>	Y <sub>4</sub>	J <sub>8</sub>	T <sub>1</sub>	M <sub>3</sub>	S <sub>1</sub>	RACK 3
E <sub>1</sub>	I <sub>1</sub>	U <sub>1</sub>	V <sub>4</sub>	V <sub>4</sub>	R <sub>1</sub>	S <sub>1</sub>	RACK 4

2nd Letter Triple  
Double Word Score

PAR SCORE 150-160  
BEST SCORE 219

FOUR RACK TOTAL  
TIME LIMIT: 20 MIN

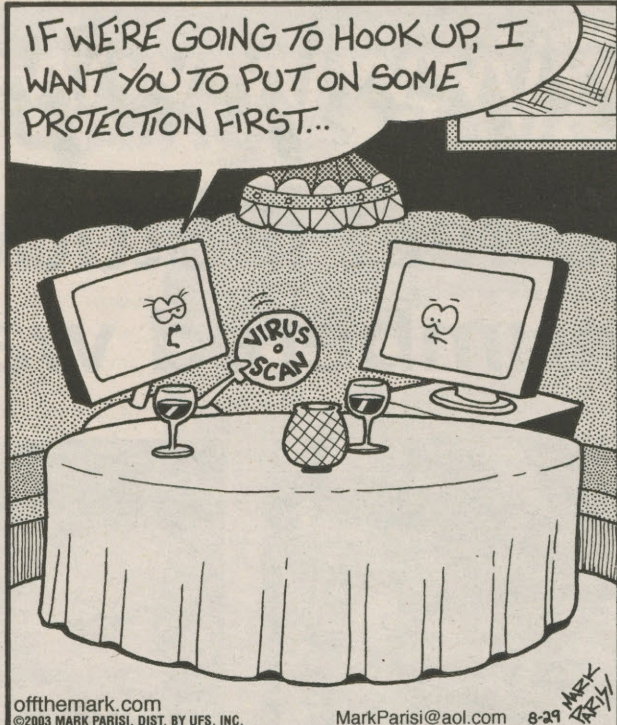
DIRECTIONS: Make a 2- to 7-letter word from the letters in each row. Add points of each word, using scoring directions at right. Finally, 7-letter words get 50-point bonus. "Blanks" used as any letter have no point value. All the words are in the Official SCRABBLE® Players Dictionary, 3rd Edition.

For more information on books, clubs, tournaments and the school program go to [www.scrabble-assoc.com](http://www.scrabble-assoc.com) or call the National SCRABBLE® Association (831) 477-0033.

04-08

## off the mark

by Mark Parisi  
[www.offthemark.com](http://www.offthemark.com)



## Classifieds

FREE Classified Ads  
for all LCC students and staff

- |                                    |                                      |  |                                    |
|------------------------------------|--------------------------------------|--|------------------------------------|
| <input type="checkbox"/> Autos     | <input type="checkbox"/> Free        | <input type="checkbox"/> Lost & Found  | <input type="checkbox"/> Services  |
| <input type="checkbox"/> Bicycles  | <input type="checkbox"/> For Rent    | <input type="checkbox"/> Messages      | <input type="checkbox"/> Tutoring  |
| <input type="checkbox"/> Education | <input type="checkbox"/> For Sale    | <input type="checkbox"/> Opportunities | <input type="checkbox"/> Workstudy |
| <input type="checkbox"/> Events    | <input type="checkbox"/> Help Wanted | <input type="checkbox"/> PSA           | <input type="checkbox"/> Other     |

Your message:

\*Phone number:

Today's date:

\*Student ID number (L#):

DEADLINE for submissions is  
5pm on MONDAY, prior to Thursday publication.

As a service to LCC, students and staff members can receive up to 15 words FREE every week. Each additional word is 25 cents. The ad may run for two weeks and resubmissions are accepted. \*Your student ID number (L #) and phone number are requested for verification purposes.

All off campus advertisers are charged 25 cents per word, per issue and payment must be received in advance.

To SUBMIT a classified ad simply CLIP this form, fill out fully, and get it to us. DROP it by the Torch office in Building 18, Room #216. SEND it snail mail to: The Torch, Lane Community College, 4000 E. 30th Ave., Eugene, OR. 97405. E-MAIL your classified: [torch@lanecol.edu](mailto:torch@lanecol.edu) (Be sure to include your phone #, L#, category selection, and complete message.) FAX your ad to (541)463-3993.

We do not accept classified ads over the phone, but for more information call 463-5654.

THE TORCH  
Lane Community College's student newspaper

## Classifieds

### For Sale

Mac Power Book laptop computer. Great for word processing (Word). Internet card. \$100. Robert 683-1018.

### Other

Sugar Plum Day Care In Junction City. \$2/hr/child open 24/7. Call today! Phone: 710-1294.

### Help Wanted

Are you a male ages 18-23? We want your help testing a survey about pregnancy prevention. We will give you \$10 for filling out a short survey. It takes 15-20 minutes.

Call 284-5183 for more information and ask for the Male Pregnancy Prevention project. ORCAS.

Intern with OSPIRG on environmental and other public interest issues through LCC's Co-operative Education Program. Earn course credit and learn valuable skills. Call OSPIRG Campus Organizer, Samantha Rodgers for more details. 463-5166.

### Lost & found

Lost: Revlon reading glasses with blue frames. Please turn in to LCC or call Kristen, 521-0308.

## ANSWERS TO PREVIOUS SCRABBLE PUZZLE

SCRABBLE® BRAND GRAMS SOLUTION													
A <sub>1</sub>	R <sub>1</sub>	C <sub>3</sub>	H <sub>4</sub>	E <sub>1</sub>	R <sub>1</sub>	Y <sub>4</sub>	RACK 1 =	<u>65</u>					
B <sub>3</sub>	I <sub>1</sub>	P <sub>3</sub>	A <sub>1</sub>	R <sub>1</sub>	T <sub>1</sub>	Y <sub>4</sub>	RACK 2 =	<u>67</u>					
E <sub>1</sub>	L <sub>1</sub>	D <sub>2</sub>	E <sub>1</sub>	R <sub>1</sub>	L <sub>1</sub>	Y <sub>4</sub>	RACK 3 =	<u>83</u>					
N <sub>1</sub>	I <sub>1</sub>	M <sub>3</sub>	R <sub>1</sub>	O <sub>1</sub>	D <sub>2</sub>		RACK 4 =	<u>9</u>					
PAR SCORE 150-160							TOTAL	<u>224</u>					
SCRABBLE® is a trademark of Hasbro in the US and Canada. ©2004 Hasbro. Distributed by Tribune Media Services, Inc. All rights reserved.													

Found:  
Digital Camera  
contact Public  
Safety, ext. 5558

Shamrock Village RV PARK  
Close to college on LTD bus route.  
\$275 plus electric with  
laundry and showers.  
Study by the river.  
541-747-7473 Restrictions apply.



## Disney Career Opportunity!

Are you ready to start building your résumé and preparing for your future career? The Walt Disney World® College Program gives you the opportunity to take college-level courses for credit, network with Disney leaders and enhance your marketability in today's job market.

As a participant, you'll enjoy a social, multicultural environment with 24-hour secured housing and admission to all four Walt Disney World Theme Parks. Plus, you'll learn about next-step opportunities with The Walt Disney Company. This paid program is open to all majors and college levels. Find out more and apply online at [wdwcollegeprogram.com](http://wdwcollegeprogram.com). Presentation attendance is required.

LANE COMMUNITY COLLEGE-OR  
Wednesday, April 14, 2004; 4:00 pm  
Building 17 Forum 308

WALT Disney World  
COLLEGE PROGRAM

Dream it. Do it. Disney.

EOE • Drawing Creativity from Diversity • © Disney

## Come one, come all!

Check out the Torch's general Staff Meetings at 2:15 p.m. on Mondays in Building 18, Room 218. These open meetings are a great opportunity to learn about and connect with your student media. Call Gabe at 463-5655 for more information.

## What do I know about me?

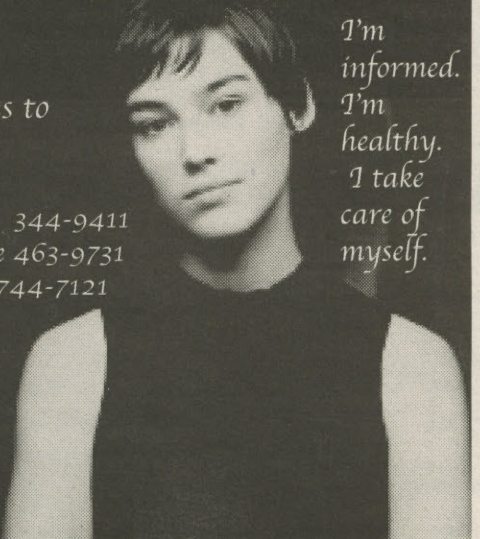
Free birth control,  
supplies and services to  
those who qualify.

I'm  
informed.  
I'm  
healthy.  
I take  
care of  
myself.

1670 High St, Eugene 344-9411  
793 N. Danebo, Eugene 463-9731  
225 Q St, Springfield 744-7121

Planned  
Parenthood

[www.pphisso.org](http://www.pphisso.org)  
[www.wecandobetter.org](http://www.wecandobetter.org)





# BACK PAGE

## The Pulse



### How would you feel if Students First implemented a numbered wait system?



**Amy Brown**  
Health Records

That doesn't sound like a bad idea. You could come in, grab a number and utilize the computers while waiting, maybe even figure out your question there without having to talk to them.



**Chris Cauble**  
Multimedia and Design

It'd be cool. It'd give the place more of a DMV feel.



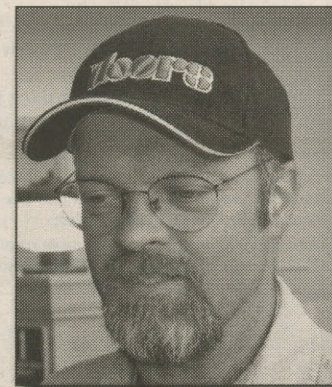
**Viki Standley**  
EMT

That would be better than this. Right now I can't do anything with my time but stand in line. We could sit and read if there were a numbering system.



**Gina Martin**  
Undeclared

They should get a numbering system and a whole lot more people.



**Gary Wagoner**  
Electrical  
Apprenticeship

That'd probably be a lot better than this. There are all these windows, but only three open whenever I come in. That doesn't make sense. For those of us on disability it'd be great to be able to come in and sit down rather than standing in line.

Compiled by Megan Wilson, photos by Sean Hoffman

## Planning on a Career in Education?



### Plan on Pacific University

Two Years at Your Community College Plus Two Years at Pacific University/Eugene Equals a Bachelor's Degree and an ECE/Elementary Teaching License

With your AAOT degree, you can transfer to Pacific to complete your Bachelor's degree and Initial Oregon Teaching License for ECE/Elementary. Now you're ready to start teaching!

Master's Degree? Upon completing our Undergraduate Teacher Education Program and receiving your Initial Oregon Teaching License, you are automatically admitted to our Master of Arts in Teaching/Continuing License Program.

**Apply Now for Fall 2004!**

Courses are offered on Pacific's campus in Eugene in the evenings and on the occasional Saturday.

We'll arrange for you to student teach in your home area.

Our campus and our classes are small - you'll receive lots of personal attention from our faculty and staff.

Enjoy the benefits of Pacific's excellent reputation and affordable financial aid packages.

**PACIFIC  
UNIVERSITY**

1849  
EUGENE CAMPUS