

THE TORCH



Titans end winning steak

Page 4

Get the scoop
on the election
Voter's Guide
Special Section

Volume XXXVIII, Number 24

Lane Community College

Thursday, May 6, 2004

Forensic team helps develop basic communication skills

New coach planned for next year will offer credit classes each term.

Elizabeth Kahl
Staff Writer

All students at Lane Community College share a common goal – to attend classes that will help develop skills needed to thrive at whatever will be done in the “real world.”

The members of the forensics team have found their way of doing this through competitive speech and debate tournaments.

“Communication skills are ranked among the top three skills employers look for,” coach Nancy Nichols said. “These skills pay off no matter what area you choose to go into after college.”

Members of the team find it to be just as rewarding as Nichols makes it sound, especially now as they have been busy with state and national competitions.

Team member Jeanette Park professes the amount of learning that occurs through the program as she just recently returned from the American Forensics Association National Individual Events Tournament at California State University-Long Beach.

Park delivered her informative speech on the Alexander Technique. She competed with students from over

100 schools.

Ted Niedermeyer and Dustin Stockton took second place in the Divisional Championships held at Clackamas Community College last weekend. Shana Stull also participated and took third place in speaker points.

Even with all the hard work and success, the forensics team still has one area in which they struggle and that is getting people involved. The team currently consists of seven members with only one returning from last year.

The team members say the experiences they get out of the program are rewarding in more ways than one. The academic experiences will help prepare them for future college course and jobs, but they also get something else out of being on the team. A sense of friendship and belonging are among the items they regard highly.

Nichols said it gives students a chance “to develop relationships with other team members that are very unique.”

To be on the LCC forensics team, enrolling in a one to two credit class taught by the team coach is required. This class is offered fall, winter and spring terms and requires no prior experience.

Nichols, who took over this term for Amber Joiner, will not be returning to the team next fall. The LCC English, Foreign Language and Speech Department is currently reviewing applications to find a replacement instructor.

POLE VAULTING POWER



Photo by Megan Wilson

Sophomore Cody Fleming clears the bar in the pole vault. Fleming tied for third place in the event on his way to finishing second overall in the NWAACC Decathlon Championships on May 3-4.

OSPIRG sets new campaign in motion; focuses on Save Oregon's Wild Forests

Governor has final say over the Roadless Rule in Oregon.

Heather Serafin & Travis D. Roderick
Staff Writer & News Editor

In a statewide effort to support a federal law that was designed to preserve millions of acres of pristine national forest, the Oregon Student Public Interest Research Group has launched their newest campaign, Save Oregon's Wild Forests.

According to Joe Bosch, LCC chapter media coordinator for the campaign, the Bush administration has quietly and surreptitiously worked to erode the 2001 Roadless Area Conservation Rule, a policy established by the Clinton administration to protect 58.5 million acres of national forest from commercial logging, mining and roads.

In December 2003, President Bush signed the Healthy Forest Act. It was designed to reduce the risk of forest fires by thinning dense undergrowth and brush. It also allows governors in the lower 48 states to seek exemption from the Roadless Rule for the forests in their states.

Alaska's Tongass and Chugach National Forests are already exempt from the Roadless Rule



Photo courtesy of Joseph C. Bosch

As part of their newest campaign, Save Oregon's Wild Forests, OSPIRG members measured various trees April 18th 2004 at the East Coquille Timber Sale near Roseburg in hopes of making people realize the trees can not be replaced by planting seedlings. This tree measured 94 inches in circumference.

as the result of a lawsuit brought by the state of Alaska and by the timber industry claiming that the rule would violate the Alaska National Inter-

See **OSPIRG** page 3

Area hospitals recognized by Co-operative Education for helping students

Local hospitals share honor of co-op department Business of the Year award.

Miranda Broadbent
Staff Writer

McKenzie-Willamette Hospital and Sacred Heart Medical Center have both been selected as Cooperative Education Business of the Year by the Lane Community College Cooperative Education Department. The medical centers will be presented with awards tonight at the co-op department's annual advisory committee dinner.

The award honors the business or organization that the department feels has been the most beneficial to students in the past year.

The involvement of both

McKenzie-Willamette and Sacred Heart represents a mutually beneficial relationship, according to Marv Clemons, a Cooperative Education coordinator. Clemons has placed students from the Diesel and Electronics Technology programs with the two hospitals.

“The students have the opportunity to test their interest in and suitability for the career field they are entering, and make contact with professionals in the field,” Clemons said.

LCC student Paul Downard has spent the past six terms at McKenzie-Willamette in the Diesel Tech Maintenance department.

Downard became acquainted with Pat Handy, the assistant supervisor of the department at McKenzie-Willamette, while doing informational interviews for his workforce network portfolio.

See **AWARD** page 3

INDEX

OPINION	2
NEWS	3
AGE	4
SPORTS	5
TILT	7
BACK PAGE	8
VOTER'S GUIDE INSERT	

WEEKEND WEATHER

Mostly Cloudy,
Chance of
Showers
64/45



Chance of
Showers
65/45

Coming next week:

ASLCC election results.

OPINION

Non-voters' silence speaks their choices loudly and clearly

Minimum turnout requirements necessary to protect majority rule from special interests in student elections.

Despite the flashy campaigns for the various ASLCC offices, some of the weightiest decisions facing students during the student body elections this year will be the seven ballot measures that would collectively raise the mandatory student fee by \$11.44 per term to a total of \$44.

I'm writing this column neither to advocate nor to criticize

any of these particular spending measures.

I'm writing this column because I'm disturbed by the process that allows a little less than nine percent of the students to raise student fees by a little more than \$11 for all students.

Last year, out of almost 12,000 eligible voters, only 1,000 students — less than nine percent — voted in the ASLCC elections.

These same nine percent could, this year, impact the checkbooks of all students.

To me, it doesn't seem right that such a small interest group

could have such a big impact on their fellow students without their consent. Whatever happened to majority rules?

When the Board of Education approved these measures to appear on the ASLCC ballot, there was talk of setting a minimum eligible-voter-turnout requirement of 40 percent in order to pass any of these spending measures.

The Board decided not to implement this idea.

A 40 percent turnout requirement wouldn't have been

See **VOTERS** page 4



**PUT UP
OR
SHUT UP**

Gabe Bradley
Columnist

You never know what the future holds

In a cartoon it's okay to have an apple cake in my face. Always feels good to eat some and have some of this, thank you.

Help save a life. The lady or man from Public Safety is on the local news. My ambassador always looks very nice and her new man friend always watches new movies like *The Lost World*.

The staff of the Torch paper is getting married. Doesn't everybody know? Very sooner or later in the future, doesn't everybody know?

Polly Crackers the bird talks day or overnight up to the wall as usual.

Play the music for the give 'em a break candy bar.

The planet Quaoas is 288 light years from Earth, doesn't everybody

know? In the Twenty-Second Century, planets will kill. Pick up people down south of the universe ball of fire. It's a lot better to stay put and take a guess at the right answer. Also, Lane Community College lets them know, thank you.

Keep the fan on. It's very hot this year. Some people die from sunbathing outdoors every year. It's a public safety worry. It's a lot better to stay indoors during a sunbath.

Editor's note: John Mackwood is a G.E.D. student at Goodwill in Springfield. John writes his column with the help of a Torch editor.



**MACK
WORLD**

John Mackwood
Columnist

Letters to the Editor

Jesus is no joke

In the 26 years I've been on the LCC campus, first as a student, then staff member, and now retiree, I don't ever remember feeling as offended by any Torch articles and/or commentary as I did with the "Now at Movies 13: The Passive Christ" in the April 1 edition.

I have not seen Mel Gibson's film; I respect each person's right to follow their own path of spirituality. Differences are part of diversity, and enrich our culture. However, I found the writer's comments, "Jesus gets a hair-cut and a real job!" sad and extremely offensive. As a follower of Jesus Christ, I believe He had a "real job" here on earth. He came to heal the sick, help the blind see, to teach us to love one another, to be a bridge to God and eternal life, and to be a sacrificial lamb to take away the sins of mankind.

According to Webster's Dictionary, satire is defined as "a literary work holding up human vices and follies to ridicule or scorn; trenchant wit, irony, or sarcasm used to expose and discredit vice or folly."

In the opinion of this reader, "Movies 13" fell far short of that definition.

Julie Baker

Former LCC student and staff member

Campaigning wastes resources

In the microcosmic election campaigns that have reached campus lately, I have one small question. Is it really necessary to waste boatloads of paper to express the same slogans over and over again? Or is it possible to find different ways to reach people (and spend resources), like say shaking hands and actually having two-way communication with our potential leaders? As Americans we are bombarded with thousands of repetitious messages everyday. Maybe

it is about time we start to rely on interpersonal skills to garner support from our peers, and let the politicians that are so far removed from the voting public spend their money on publicity.

Ray Cole

LCC student

We need better service from our representatives

We all have an obligation to make our school a better one to attend. It takes everyone to be a part of the team! All students should be encouraged, free of prejudice, to participate in their school activities and student government. Staff should assist in a supportive and positive way.

Unfortunately this positive guidance is not always the case. A couple weeks ago, a friend of mine was inquiring how her or a friend would run in the student elections, which led her to the ASLCC staff advisor's office, but sadly instead of gaining useful info, she left the office feeling discouraged, discriminated against and as unwelcome as she had felt in along time!

This in an office that is financed by our student fees and public taxes, and it is meant to inspire confidence, respect and dignity. I would encourage any student that has been treated in this way to report it to the school administration or the board of education at once. This kind of behavior should not be tolerated, especially by people old enough to know better! With this episode in mind, it's no wonder we have low student participation in our student government and if this problem continues at ASLCC then perhaps its time for replacements in certain positions there.

Tom Bush

LCC Student

Write-in Bush

I am writing you to let you know that Tom Bush is willing to be a president candidate for student government at LCC. He is a wonderful person with a lot of talents. He is someone with great ideas and can do great things at LCC and in our community. I am willing to help him in his campaign.

Nathan Gue

LCC student

\$1 can make a difference

\$1 can bring more opportunities to make friends around the world!

General Fund support for the International Student Program has been eliminated and the total cost of the program is now placed on the international students. International students pay a \$150 fee (\$90 to enrollment services and \$60 to ISP), on top of all other fees and their tuition, which is more than three times higher than the tuition of local students. By increasing the student activity fee by only \$1 brings in \$9,000-\$10,000 per a term for services to support the ISP. ISP activities and events such as Tea and Chat every Friday, the Ski and Snowboard Trip, social activities, the English Conversation Partner Program and more are open to all students on campus. This change will bring a sizable opportunity, not only to international students but also to non-international students. By supporting international students on campus, non-international students will be able to have numerous opportunities such as diversity of different cultures, religions and languages. We, international students are here to study about American cultures and we would love for you to know our cultures better. There are numerous opportunities on campus for you to get to know people from all over the world, and if every student can pay

an extra \$1 to support international students, there will be even more of opportunities for you. Make more chances for yourself and get those opportunities!

Natsuko Hirano

LCC Student

Why vote \$1 to benefit the international students?

For the upcoming LCC elections, among the proposed fee increases is \$1 from each student to help stabilize the budget for the international student office. People might ask why they should pay for this program if it will only benefit foreign students.

There is a common misconception that the international students program solely works for the benefit of international students. However, besides helping them adapt to life in the U.S., this program organizes trips and activities for all interested students (domestic and international). Many domestic students participate in and benefit from these activities, which also promote diversity by providing the opportunity to meet people from different countries and cultures.

International students are also a big economic plus for this college. They pay about three times the tuition of domestic in-state students and contribute to the college's and the state's economy.

This \$1 will help the international students program to continue offering these services for international and American students. LCC has one of the most diverse and multicultural campuses among community colleges on this coast. I encourage the readers to think of that \$1 as a small price to pay for such an advantage in education. I also encourage those with questions or concerns to send e-mails to ISCP PeerCoordinators@lanecc.edu or come to our office on Bldg. 1, Room 201B.

Gaston Figueroa

ISCP Peer Coordinator

THE TORCH

The official student-managed newspaper of Lane Community College is published every Thursday

Submission Guidelines

Letters to the editor should be limited to 250 words. Commentaries should be limited to 750 words. Please include the author's name, phone number and address (address and phone number are for verification purposes only and are not for publication.) The editor in chief reserves the right to edit letters and commentaries for length, grammar, spelling, libel, invasion of privacy and appropriate language.

Editorial Board

Gabe Bradley..... Editor in Chief
Liz Mayfield..... Managing Editor
Travis D. Roderick..... News Editor
Shawn Miller..... Sports Editor
Melissa Vandever..... A&E Editor
Megan Wilson..... Photo Editor
Colette Lazinski..... Photo Editing Assistant
Maria Lance..... Production Manager
Noah Rademacher..... Asst. Production Manager

Advertising Manager

Shannon Browning

News & Editorial Adviser

Frank Ragulsky

Production Adviser

Dorothy Wearne

Contact Us

Editor in Chief 463-5655
Newsroom 463-5881
Production 463-5109
Advertising 463-5654
E-mail: torch@lanecc.edu
Mail: The LCC Torch,
Bldg. 18 Rm. 218
4000 E. 30th Ave.
Eugene, OR 97405

News

Colon cancer claims life of prominent LCC administrator

A prominent LCC educator and counselor died last week after being diagnosed only three weeks ago with colon cancer.

Carol Lynn Morse passed away at 11:10 a.m. on April 28 at Sacred Heart Hospital, her family by her side. Morse, 55, had become seriously ill for about three weeks.

Morse first joined LCC in July 1978 as a counseling instructor in Continuing Education, taking on increasing duties over the years. Since October 1992, she had coordinated and taught in the Center for Family Counseling program and served as a counselor for various academic programs in the Counseling Department.

Morse was a licensed and certified counselor. She held a doctorate in psychology from the University of Oregon, where she also earned a master's degree in counseling and a bachelor's

degree in journalism.

A memorial service will be held at 1 p.m. May 23 at the Center for Meeting and Learning on the Lane Community College campus. Morse's family asks that memorial donations be made to the Carol Morse Life Work Memorial Fund in care of Musgrove Family Mortuary.

In an email circulated to LCC staff and faculty to alert them of Morse's passing, Donna Koechig, associate vice president for instruction and student services wrote, "Carol Lynn touched many peoples lives. Her absence at Lane and in the community will leave an enormous void."

"Thank you Carol Lynn for all that you contributed to help make Lane Community College and each of us a little better than we would have been. You brought out the best in all of us. We will miss you!"

AWARD from page 1

lio. When the time came to begin his co-op, he called Handy about the possibility of setting up a co-op in his department at McKenzie-Willamette. Handy agreed.

"The atmosphere is pretty well knit; it's kind of like a family there, the way everybody gets along with each other," he said.

Student Lory Reese says she has enjoyed working as a student respiratory therapist at Sacred Heart. She says the therapists she has worked with are not only knowledgeable and professional, but are also gracious and patient in sharing their skills with the students. "I have met some gifted teachers among them," she said.

Clemons says the staffs at both hospitals greatly enhance the success of students involved in the various fields the co-op programs offer. They give the students a chance to apply the material they have learned in the classroom real world problem solving situations.

They also provide "real exposure to the culture of the workplace, which is something not possible to replicate in a training facility," said Clemons.

"The reason McKenzie-Willamette and Sacred Heart were chosen for this award," he continued, "was because of their dedication to the goals of the instructional programs offered at Lane."

LuAnne Boettiger, Director of Staff Development at McKenzie-Willamette, feels that the program is beneficial to not only the students, but to the hospital as well.

"It is a partnership that works for everyone," she said. "The students are mentored by our staff and the staff feel they have contributed to the future of healthcare."

We love nurturing our upcoming professionals and we frequently find them working with us side by side in the future."

Both hospitals have offered students experience in a variety of fields including nursing, respiratory care, business administration, electronics and diesel technology.

OSPIRG from page 1

est Land Conservation Act.

Bosch states that OSPIRG believes it is not economical or necessary for the Bush administration to open 60 million acres of national forests for logging, mining, drilling and road building.

"OSPIRG's opinion is that weakening the most popular environmental law in history is a giveaway to the timber industry over the interest of the public," said Bosch. "We do not want to lose the Roadless Rule."

OSPIRG is therefore working to inform the public of this issue and to let them know that Oregon Governor Ted Kulongoski has the final decision-making ability on whether or not to seek exemption from the Roadless Rule in Oregon.

Bosch says OSPIRG will continue to set up information tables and encourage people to write letters to the governor urging him to publicly support the Roadless Rule.

Last month at an Earth Day Celebration, OSPIRG collected 70 letters that were written to the governor in support of their campaign.

LCC instructor Cliff Trolin teaches a class called Nature, Religion and Ecology at the college's main campus. Trolin says he is a firm believer in ecological preservation and believes in the importance of activism to initiate changes beneficial to the environment. He is therefore offering extra credit to his students who become involved in the Save Oregon's Wild Forests campaign.

"To me it's a really good project, because the roadless area [rule] was something that was worked on for a long time with a huge response from people, and Clinton responded," said Trolin. "Now Bush is subverting it."

"Governor Kulongoski has an opportunity to both prevent Bush from subverting it in this state and also be a spokesperson to try and keep it from being subverted elsewhere," Trolin continued. "I think Kulongoski would be in deep trouble [from environmental groups] if he didn't hold to this roadless rule... I don't think that the forest industry in this state has the same clout that it has in Alaska."

Bosch said that he wants Oregonians to know that the Roadless Rule is important to Oregon's economy because it is based on recreation. Bosch also stated that preservation of Oregon's wilderness is essential to the health of the ecosystem and for helping to prevent pollution, as forests are necessary for clean drinking water.

Anyone interested in more information or in joining the Save Oregon's Wild Forests campaign can contact OSPIRG by calling 463-5166 or by stopping by the student group's office in the basement of the Center building.

FYI . . .

ASLCC will host and moderate a candidate Q&A forum in the cafeteria on Monday, May 10 from 12-1:30 p.m. School issues and ballot measures will be discussed and debated. Students are encouraged to attend and participate in the event.

Advance Registration for Fall 2004 is now underway. Students who have already met with an adviser are cleared for advance registration and may register for Fall 2004 classes. Students who have not met with an adviser may register for Fall term 24 hours after their advising session. The Fall schedule is available online on LCC's webpage. A printed class schedule for Fall will be available prior to the term. There is no advance registration for Summer. See the LCC webpage for registration dates. Students with account balances for the previous term not paid in full by the advance registration payment deadline will be dropped from their advance registration classes.

A Ford Scholarship Interview Workshop is being sponsored by TRiO and Career and Employment Services on Friday, May 7 from 12-1:30 p.m. in Building 1, Room 224. Students who have been invited for Ford Interviews are welcome at the workshop. Please contact Marla at 463-3131 with any questions and to sign up.

TRiO will be open for enrollment for the 2004-05 school year starting Monday, May 10. Students must fill out a short assessment form to confirm their eligibility, then sign up for an orientation that will start at the end of August. The TRiO Learning Center is a federally-funded program with the goal of helping students stay in school and successfully graduate from LCC and/or transfer to a four-year institution. The services are provided free to eligible students to assist them in meeting the varied challenges of college life. Please call Marla at 463-3131 with any questions.

The Second Annual Summit on African American Student Achievement celebrates the Fiftieth Anniversary of the landmark Supreme Court decision Brown vs. Board of Education on May 22 at Sheldon High School. The day-long event, "Fulfilling the Promise of Brown vs. Education," begins at 8 a.m. with a panel of lawyers and educa-

See **FYI** page 11

We Love LCC Students!

UNIVERSITY COMMONS APARTMENTS

Now Leasing!



1, 2, & 4 Bedroom Apartments with washer/dryer

Starting at
\$310.⁰⁰

**UNIVERSITY
COMMONS
APARTMENTS**
90 Commons Drive
Eugene, OR. 97401

Tons of amenities!

Come and take a tour today!

Call today!

338-4000

Open 7 days a week

Monday – Friday 9–6

Saturday 10–4

Sunday 1–5

Ask about our \$100 off move-in special. For a limited time only.

ARTS & ENTERTAINMENT

Nature Writer's Group to publish fourth magazine

Melissa Vandever
A&E editor

*"Love the Earth more
and love yourself more
For Spirit is the woods
and the walkers of the woods."*

This poem by Jon Barfield is one of the many writings that appeared in last year's publication of "Earth Tithe," the third annual publication by the LCC Nature Writer's Group. The magazine, which includes not only poetry, but prose, art and photography, is put together by the group over the course of the school year.

The fourth issue of the magazine is set to be finished by the end of this term. The submission deadline for entries was originally set for May 5, but may be pushed back a week or two.

"The nature writer's group is a club on campus of about 10-12 people with a core group of five people," said faculty adviser Ken Zimmerman. "The magazine is an outgrowth of that group, which shares writing and discusses issues of nature, ecology and related subjects."

Zimmerman said submissions are open to anyone connected with the LCC community, not just group members.

"I think issues related to nature, ecology, sustainability and how humans relate to the natural world are important in our culture, and especially at Lane," Zimmerman said. "There are many courses and learning communities, such as Eco Trails, that bring all these issues together and make nature an essential issue in our lives. These meetings are a neat place to think about and work on these issues."

Zimmerman said the group is planning to expand its activities in the future by meeting off campus for events such as hiking and other nature-related field trips.



Photo by Megan Wilson

LCC Nature Writer's Group president Chris Stratman met with members to discuss this year's edition of "Earth Tithe." The deadline may be extended to allow for more submissions. Look for posters around campus or contact Ken Zimmerman at 463-5760, or Stratman at cstrat17@hotmail.com for more information.

"The group was started three years ago by instructor Jeff Harrison," said Zimmerman. "Harrison taught a nature lit course and the group just grew out of that. He was the main person who got the club going."

Zimmerman said the length of the magazine depends on how much is submitted, (last year's was 32 pages counting the cover) but they hope to keep the same basic layout. "This year we got a grant from student government to print glossy pages for the photos — it will look a little spiffier this time around."

The nature writer's group meets every Tuesday from 3-5 p.m. in the Center Building, Room 470.

"The meetings are absolutely open to chat, share writing or help with the magazine. We would always love to have more people," said Zimmerman.

For more information on the Nature Writer's Group, contact Zimmerman at 463-5760, or the group president Chris Stratman at cstrat17@hotmail.com. Submissions may be dropped off at Zimmerman's office in the Center Building, Room 449D.

VOTERS from page 4

Despite the flashy campaigns for the various ASLCC offices, some of the weightiest decisions facing students during the student body elections this year will be the seven ballot measures that would collectively raise the mandatory student fee by \$11.44 per term to a total of \$44.

I'm writing this column neither to advocate nor to criticize any of these particular spending measures.

I'm writing this column because I'm disturbed by the process that allows a little less than nine percent of the students to raise student fees by a little more than \$11 for all students.

Last year, out of almost 12,000 eligible voters, only 1,000 students — less than nine percent — voted in the ASLCC elections.

These same nine percent could, this year, impact the checkbooks of all students.

To me, it doesn't seem right that such a small interest group could have such a big impact on their fellow students without their consent. Whatever happened to majority rules?

When the Board of Education approved these measures to appear on the ASLCC ballot, there was talk of setting a minimum eligible-voter-turnout requirement of 40 percent in order to pass any of these spending measures.

The Board decided not to implement this idea.

A 40 percent turnout requirement wouldn't have been a good decision for a couple of reasons.

First of all, 40 percent is an almost impossible number for voter turnout at a voluntary student election.

According to the Committee for the Study of the American Electorate, voter turnout for presidential elections has been between the upper 40s and lower 60s in terms of percent for the last century.

The presidential election is typically the election that garners the most turnout. To expect a far-less publicized student election to pull in a 40 percent turnout rate is unreasonable.

Furthermore, the ASLCC election is a traditional, polling-place style election. These types of elections traditionally bring in the fewest voters, as opposed to Internet voting or vote by mail types of elections.

But if this is the case, why didn't the Board merely lower the required turnout rate?

The reasoning behind the decision was that a minimum turnout requirement for spending measures would be ignoring the will of those students who made the effort to take their civic duty seriously, get out to the polls and vote.

That's certainly a fine-sounding argument that seems to

make a good point and appeals to my sense of civic duty. But when I give it a little more thought, the argument just doesn't hold water as far as I'm concerned.

When it comes down to it, it shouldn't matter that nine percent of students cared enough about these issues to march down to the polling place and vote if 91 percent of students didn't.

The deafening silence of these students' failure to vote says loudly and clearly, "You haven't given us enough reason to care."

These students are voting with their feet. The non-voters are either consciously or unconsciously telling the proponents of these measures and the candidates for these offices that they haven't done a good enough job making their case.

Advocates for these measures and candidates for these offices have not been able to convince more than nine percent of students that these issues are important enough or relevant enough to spend five minutes filling out a ballot.

To me, that represents a miserable failure on the part of the politically-involved segment of our campus to reach out to the non-involved.

There are many who see this same situation differently than I do. There are those who will blame the non-voters for the appalling lack of voter participation on this campus. But I don't

Reading Together: Award-winning poet B.H. Fairchild, 10 a.m. to noon in Building 17, Room 309. For more information contact Ellen Cantor at 463-5749.

May 7

Women's Center Video: Friday at 1 p.m. in Building 1, Room 202. For more information contact the Women's Center at 463-5353.

Spring Inspirations: An evening of original student-written and directed plays. Spring Inspirations opens tonight at 8 p.m. There is a suggested \$5 donation at the door.

May 8

Spring Inspirations: Continues tonight at 8 p.m. There is a suggested \$5 donation at the door.

May 11

Vocal Jazz Invitational: 7 p.m. in Building 6. Admission is \$4. For more information contact Myrna Seifert at 463-5161.

May 12

Multi Cultural Center Video: DAM/AGE: Traces Arundhati Roy's campaign against the Narmada dam project in India. 5 p.m. in Building 1, Room 206. For more information contact Susan Matthews at 463-3245.

May 14

Spring Inspirations: Continues tonight at 8 p.m. There is a suggested \$5 donation at the door.

May 15

Spring Inspirations: Continues tonight at 8 p.m. There is a suggested \$5 donation at the door.

Ongoing

Student Art Exhibit: The exhibit runs through May 20 in the art gallery, located downstairs in Building 11. Contact Mary Jo Workman at 463-5411.

SPORTS

LCC scores big at track championships

*Bartow wins decathlon,
Fleming second and Winkle
third for women*

Shawn Miller
Sports Editor

Lane sophomores dominated the NWAACC heptathlon and decathlon championship events held at LCC on May 3-4.

The multi-event championships are held three and a half weeks before the NWAACC championships in order to allow these athletes to rest and get their legs back. In the multi-events, competitors are scored based on their result, not their placing in the group. After all events are finished, the numbers are tallied and the top finishers receive points for their school.

First place is worth 10 points, second is eight, third is six and each following position is one less point.

"We place our emphasis on multi-events," said Head Coach Grady O'Connor. "These decathletes and heptathletes put in a lot of hard work. It's fun to see it all pay off for them."

For most years, a score of 4100 would win the women's championship. That is a true testament to how deep this year's field is because the score of the fifth place was 4141, from Lane freshman Monica Teeple.

"For me, it [the competition] went really well," said Teeple. "I had hoped to do this well."

"[Next year] I'd like to win it, but the goal is to finish in the top three and beat



Photo by Megan Wilson

Sophomore Brian Bartow throws the javelin over 182 feet to win the competition. Bartow's 6772 points at the NWAACC Decathlon Championships was enough to win and earn eighth place on the NWAACC all-time record list.

my score from this year."

The top four finishers had NWAACC all-time records. First place went to Katie Miller of Clark with a score of 4988, ranked first on the all-time list. Molly Burt, of Spokane, finished second with 4726 points, which is fourth all-time. Lane sophomore Mackenzie Winkle broke the school's all-time record (Brandy Dunn in 1996 of 4575) and finished fifth on the NWAACC's all-time list with 4698 points. Fourth place finisher, Kasie Gillespie of Clackamas, placed seventh on the list with 4630 points.

"It was unbelievable depth in the competition," said O'Connor. "This was the strongest, of competitors one through six that this conference has ever had. The fifth place finish would win the competition a lot of years."

"I am happy with myself," said Winkle. "I think that our women are going to win [overall NWAACC championship]. We don't have a lot of girls, but what we do have are good."

The women are already on a hot start with 10 team points, one behind Spokane and three points behind Clark.

On the men's side, the tradition continues. The past three years, the NWAACC decathlon champion has been from Lane. This year's winner was sophomore Brian Bartow, with a score of 6772, ranked eighth on the NWAACC's all-time best list.

The championship came down to the wire, actually the last event: the 1500 meter run. With the top three competitors separated by 120 points, it was obvious that only the best effort could allow the champion to prevail. Bartow, running in the middle of the pack with one lap remaining, found enough energy to push his way to third place, which was enough to win the championship by 31 points over fellow Lane sophomore Cody Fleming.

"I was kind of surprised," said Bartow of his finish. "I felt yesterday that I wouldn't get into the top two. I knew if I got a good javelin throw, I'd be in the hunt."

That he did, winning the javelin with a toss of just under 182 and a half feet. The next best throw was less than five feet below that mark.

Fleming placed tenth on the NWAACC all-time list. Both of their finishes combined with freshman Clint Hickey placing sixth, earned the Titans 21 points heading into the overall championships. The closest school is Clackamas, with 10 points.

"My stomach is still in knots," said O'Connor shortly after finding out the results. "There is so much that develops and undevelops during the course of these two days."

The rest of the NWAACC championships will be held in Spokane, Wash. on May 27-28.

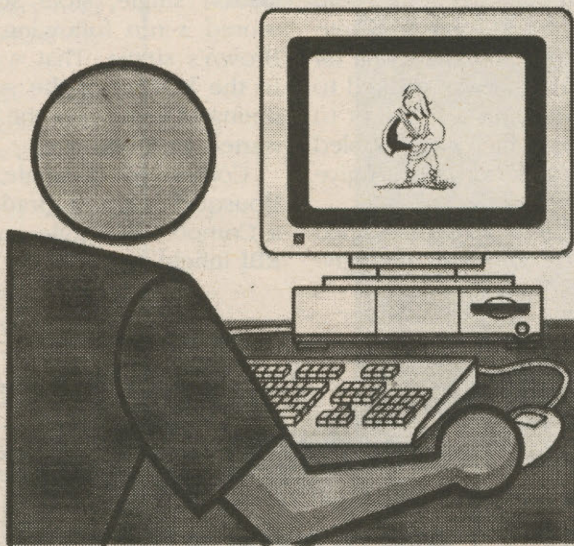
Torch
Editor

The Torch editor is responsible for directing news gathering and the publication process, and has control of the news and editorial content of the paper.

The editor should have journalistic, management and organizational abilities, training and/or experience. He/she should also have previous service on a newspaper staff, and have gained an adequate understanding of the operation of a newspaper.

The applicants must have completed at least six credits at LCC within the last 12 months and be registered for six credits per term while editor. The editor must maintain a 2.00 GPA or higher, can expect to work 30-40 hours per week, and will receive a monthly stipend of \$550 per month for 12 months. The editor will serve fall, winter and spring terms of the 2004-2005 academic year.

Break into print...



...take a position
that will give you
valuable life experience.

Application Information

Application packets will be available Friday, April 30. Application packets can be obtained from Dorothy Wearne in Building 18, Room 214. The deadline for returning packets will be Thursday, May 13 at noon. The Media Commission will select the new editors on Thursday, May 27.

Denali
Editor

The Denali editor selects and manages the 2004-2005 student staff, organizes the production schedule, and has the final word on all matters concerning the magazine.

He/she must have a concrete understanding of, or the commitment to learn, the technical skills of the production process of a magazine. He/she can expect to work at least 20 hours per week. A background in literature and art is recommended. Knowledge of desktop publishing is extremely helpful. The editor must be an officially registered student and must maintain a 2.00 GPA or higher. The Denali editor will be paid a stipend of \$500 per term and will serve fall, winter and spring terms of the 2004-2005 academic year.

SPORTS

See-saw battle ends in ninth inning thriller

The Titans are tied for first with Mt. Hood, both holding a league record of 17-5.

Shawn Miller
Sports Editor

If you look at their play, you wouldn't see it in their record. Surprisingly enough, the Titans are on top of the league, having won 11 out of the past 12 games.

Many people call it "clutch" or "timely" but Head Coach Rob Strickland would classify it as "fortunate." What is it? It is the way the Titans continue to win, while often trailing in the final two innings.

"In some respect, they are falling into a false sense that they can win every time," said Strickland. "Right now, we are not playing as good of baseball as Mt. Hood.

The trend continued on May 1 at Clackamas. In the first game one run in each of the third, fourth and sixth innings, while Clackamas scored two runs in the third and seventh innings, as well as another in the eighth. With the score 5-3 in favor of Clackamas and the Titans three outs away from being beaten, sophomore Charlie Wright hit a homerun to start the ninth inning.

Sophomores Scott Corbett and Phil Ouellette were able to get on base before being sacrificed over by freshman Jordan Bousquet. That is when sophomore Donny Bradetich came up with the biggest hit of the afternoon, a double to score Corbett and Ouellette and give the Titans a 6-5 lead they would hold on to for the victory.

"It's great that the team is able to do that," said Strickland. "It shouldn't come to that; Down to the last inning to score three runs to win."

The winning streak — nine games — had been saved several times, but couldn't last much longer. Clackamas ended the second game with a 5-3 win, although they allowed the bases to be loaded in the bottom of the final inning.

The Titans got their three runs in the fifth inning, all on a home run by sophomore Matt Skundrick. While the Titans only had five hits, they were given seven walks, but were unable to capitalize.

"It's difficult to continue a winning streak and we were falling off," said Strickland. "What really hurt us was the relief pitching that came in, but didn't hold them down."

Following the tough loss, the Titans



Photo by Megan Wilson

Sophomore Donny Bradetich slides into second base after hitting one of his three doubles on May 4 against Chemeketa. Bradetich leads the team in batting average with .346 and 25 runs batted in.

hosted Chemeketa on May 4. The closeness continued as the Titans gave up a double-digit number of hits in both games.

In the first game, Chemeketa scored two runs in the first and third innings. Bradetich hit a double off the top of the wall in left field in the second inning for the Titans and Wright followed with an RBI single. Sophomore Sam Kirby hit a single and Wright was able to score on an error.

That was the scoring for the first seven innings of the game.

With one out in the bottom of the eighth inning, the Titan bats were sparked. Ouellette hit a double to right field, which was followed by sophomore Derek Bodeen getting on base after an error. Sophomore James Compo hit into a fielder's choice and then Bradetich hit an RBI single. Skundrick was walked to load the bases. Wright hit a hot shot to the second basemen, which was bobbled and two runs were able to score to give the Titans a 5-4 lead.

Kirby then hit an infield single capped by his head-first dive into first base, giv-

ing the Titans four runs on three hits in the eighth inning. The Titans held on to win 6-4.

"It was a gift," said Strickland. "We got lucky. We played well but we haven't played well enough that we should beat teams."

"We need to establish that we can keep leads," said Kirby, who was 3-4 in the game. "It shows a lot of character. We find a way to win and that's what makes a good team."

The second game looked much like the first, with Chemeketa gaining a 4-0 lead after five innings. Skundrick who pitched a complete game, gave up 13 hits, with only one walk and four runs.

In the sixth inning, Bradetich hit a leadoff single, stole second base and scored a run following freshman Tyler Brown's single. That was just the start. In the bottom of the seventh and final inning of game two, the Titans got things started with one out.

Corbett got a single, followed by a Bousquet single, a Bradetich RBI single, a Compo RBI single and last, a Brown RBI infield single as the Titans got three

runs to tie the game.

After a double play ended the inning, both teams headed to extra innings. Neither team was able to do anything in the eighth.

In the bottom of the ninth, it was Titan time. With the bases loaded and two outs, Kirby hit a sacrifice fly that scored Bradetich who hit a lead-off double. The Titans won 5-4.

"It's something I've never seen on any team: So out of a game and to come back with a win," said Strickland. "We were fortunate today."

Sophomore Scott Corbett was a perfect 4-4 in the game, while Kirby had three hits.

"I was more relaxed," said Corbett. "I kept my attitude up and had good confidence in the second game."

"The main thing for me is I've been seeing the ball well," said Bradetich who was 6-9 with three doubles on the day. "I've been putting the good swings on it."

It seems that many of the Titans have been putting good swings on it, especially when the game is on the line.

WE'RE ON FIRE!

P
R
E
S
I
D
E
N
T

Jeremy
Riel

P
R
E
S
I
D
E
N
T

Kevin
Glenn

**ELECT J & K FOR STUDENT
BODY PRES & VICE-PRES
ON MAY 10, 11, & 12!**

Find the Titan Logo



Hidden somewhere in this week's Torch is another Titan logo, (like this one). Find it and receive a FREE can of pop from your SRC.

STUDENT RESOURCE CENTER

Located in the Student's First Building, 2nd floor
AND in the Center Building, 2nd floor

Now offering Snack Packs!

\$1.75 Morning
Snack Pack

Comes with coffee
and your choice of
beverage or yogurt and
a bagel or muffin.

\$2.00 Afternoon
Snack Pack

Comes with a can of pop,
bag of chips, and your
choice of a burrito,
hot pocket, chimichanga,
or cup-o-noodle soup.

**Get out
and
Vote**

**May 10,
11 & 12,
2004**

TILT

Classifieds For Sale

Rans Tailwind recumbent w/many extras. Cost new: over \$1,000; will consider all serious offers. Great for commuting and touring. Knee injury forces me to sell. Call Sally at 342-1668.

Compact refrigerator, 19"x 34," \$65. Internet ready computer, \$150. Practice piano, \$350. Call 606-1463.

Oregon Antique Mall gift certificate. \$30 value, asking \$25 OBO. Buy a special gift! 431-0263.

Beautiful Rottweiler puppies, 7 males and 1 female left, references available, \$300. 937-3792.

Autos

1997 Chrysler LHS. Power everything, new tires. Great Car! Below Blue Book \$5200 OBO. 434-6503.

1991 Oldsmobile Silhouette. \$1300. Runs well and quietly. Can carry lots of people and comes w/new tires. Call 221-9164.

For rent

Sublease: One bedroom apartment for rent over summer. Downtown, w/d, new carpet. \$325/month. Call 349-0334.

Events

The Class of 1994 from South Eugene High School is planning their 10 year reunion. Are you or someone you know a member of this class? Contact Kendra (Sullivan) Abraham at 541-913-2115 or email her at ks1325@yahoo.com. Please join our online discussion group at axemen90s@yahoogroups.com.

Messages

Happy Birthday Justin! 5 years old. How time flies; I love you! Love, Mommy.

Elect J&K on May 10, 11 & 12! J&K are committed to unifying & serving the campus. Remember to vote!

Opportunities

Students interested in earning credit while working this summer can apply for an internship with Safe at Home Baseball Camp. Starts June 21. 683-1018, robsp0@hotmail.com.

Join international students for "Dinner and a Movie," May 15. For more info call 463-5165, ISCPPeerCoordinators@lanecc.edu.

Need a Summer Internship? Plus help out a great bunch of kids. We are looking for males and females 18+ to spend a week in the great outdoors at a free summer camp. For more info call Kathryn at 541-461-0391 or email me at GaryRich1960@msn.com Subject Line: Camp Quality Oregon.

TRiO seeks TUTORS for 2004-2005. \$10.04/hr. Experienced only. Application packets in TRiO office, Bldg. 1, Rm. 219. Closing 5/28/04.

off the mark by Mark Parisi www.offthemark.com



SCRABBLE BRAND G₂ R₁ A₁ M₃ S₁

SCRABBLE® is a trademark of Hasbro in the US and Canada. ©2004 Hasbro. Distributed by Tribune Media Services, Inc. All rights reserved.

O ₁	A ₁	U ₁	L ₁	Q ₁₀	R ₁	R ₁	RACK 1
E ₁	E ₁	O ₁	V ₄	N ₁	H ₄	B ₃	RACK 2
E ₁	O ₁	O ₁	K ₅	B ₃	L ₁	T ₁	RACK 3
E ₁	U ₁	Y ₄	R ₁	G ₂	S ₁	R ₁	RACK 4

PAR SCORE 150-160
BEST SCORE 231

FOUR RACK TOTAL
TIME LIMIT: 20 MIN

DIRECTIONS: Make a 2- to 7-letter word from the letters in each row. Add points of each word, using scoring directions at right. Finally, 7-letter words get 50-point bonus. "Blanks" used as any letter have no point value. All the words are in the Official SCRABBLE® Players Dictionary, 3rd Edition.

For more information on books, clubs, tournaments and the school program go to www.scrabble-assoc.com or call the National SCRABBLE® Association (631) 477-0033.

FYI from page 3

tors discussing student achievement and its connection to the Brown vs. Board Education decision. The program will include workshops especially designed for parents, students, teachers and community members. For more information call Bahati Ansari, Tasha Katsuda or Arbrella Luvert at 687-3221. This is a free event and childcare for children over five is provided. Sponsors are the African American Achievement Gap Committee, District 4J, Jefferson Middle School and Sheldon High School. Springfield, Bethel and Eugene School Districts and Lane Community College support the summit.

A commencement keynote speaker contest is open to graduating LCC students. The contest will be held Thursday, May 6 from 3-5 p.m. Each contestant will need to have a speech 3-5 minutes in length and will present to a panel of three to four judges. The selected speaker will receive \$100 and will give the keynote speech at the LCC graduation ceremony on Saturday, June 12. All LCC 2004 graduating students are eligible to enter. Interested parties are encouraged to contact Tina Lymath in Building 1, Room 206A or call 463-5336 for a list of guidelines and to sign up for a time to give their speech.

Faculty Recognition Awards - Nominations are open to faculty for recognition awards for Spring term. Please go to <http://staff.lanecc.edu/fra> or obtain a nomination form from Student Services or department.

Classifieds

FREE Classified Ads
for all LCC students and staff

- | | | | |
|---------------------------------|-----------------------------------|-------------------------------------|---------------------------------|
| <input type="radio"/> Autos | <input type="radio"/> Free | <input type="radio"/> Lost & Found | <input type="radio"/> Services |
| <input type="radio"/> Bicycles | <input type="radio"/> For Rent | <input type="radio"/> Messages | <input type="radio"/> Tutoring |
| <input type="radio"/> Education | <input type="radio"/> For Sale | <input type="radio"/> Opportunities | <input type="radio"/> Workstudy |
| <input type="radio"/> Events | <input type="radio"/> Help Wanted | <input type="radio"/> PSA | <input type="radio"/> Other |

Your message:

*Phone number:

Today's date:

*Student ID number (L#):

DEADLINE for submissions is
5pm on MONDAY, prior to Thursday publication.

As a service to LCC, students and staff members can receive up to 15 words FREE every week. Each additional word is 25 cents. The ad may run for two weeks and resubmissions are accepted. *Your student ID number (L #) and phone number are requested for verification purposes.

All off campus advertisers are charged 25 cents per word, per issue and payment must be received in advance.

To SUBMIT a classified ad simply CLIP this form, fill out fully, and get it to us. DROP it by the Torch office in Building 18, Room #216. SEND it snail mail to: The Torch, Lane Community College, 4000 E. 30th Ave., Eugene, OR. 97405.

E-MAIL your classified: torch@lanecc.edu (Be sure to include your phone #, L#, category selection, and complete message.)

FAX your ad to (541)463-3993.

We do not accept classified ads over the phone, but for more information call 463-5654.

THE TORCH
Lane Community College's student newspaper

ANSWERS TO PREVIOUS SCRABBLE PUZZLE

SCRABBLE BRAND GRAMS SOLUTION

F ₄	I ₁	B ₃	R ₁	O ₁	I ₁	D ₂	RACK 1 =	89
U ₁	P ₃	C ₃	O ₁	A ₁	S ₁	T ₁	RACK 2 =	64
B ₃	U ₁	D ₂	G ₂	E ₁	T ₁		RACK 3 =	10
B ₃	R ₁	O ₁	A ₁	D ₂	L ₁	Y ₄	RACK 4 =	63
							TOTAL	226

PAR SCORE 145-155

SCRABBLE® is a trademark of Hasbro in the US and Canada. ©2004 Hasbro. Distributed by Tribune Media Services, Inc. All rights reserved.

TRiO seeks TUTORS for 2004-2005

\$10.04/hr. Experienced only.
Application packets in TRiO office,
Bldg. 1, Rm. 219. Closing 5/28/04.

Shamrock Village RV PARK

Close to college on LTD bus route.
\$275 plus electric with
laundry and showers.
Study by the river.
541-747-7473 Restrictions apply.

PREMIUM POUR BARTENDING, INC.

Consulting, Curriculum & Staffing



More
than
a
school...

Classes Begin:

Days June 28
Weekends Nov. 6
One week session June 21
Nights June 29
OLCC Class ... June 27, July 18, July 26

(541)485-4695

www.premium-pour.com

1010 Oak Street, Eugene, Oregon 97401

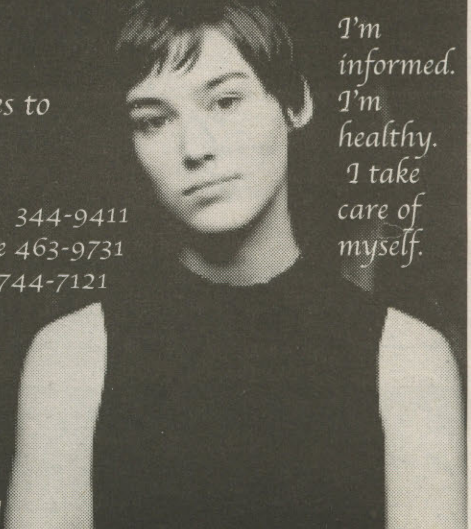
What do I know about me?

Free birth control,
supplies and services to
those who qualify.

1670 High St, Eugene 344-9411
793 N. Danebo, Eugene 463-9731
225 Q St, Springfield 744-7121

**Planned
Parenthood**

www.pphsso.org
www.wecandobetter.org



I'm
informed.
I'm
healthy.
I take
care of
myself.

BACK PAGE

The Pulse



For Mother's Day, the Torch staff decided to poll their mothers. "If you could be the mother of any superhero, who would you pick and why?"



Ann Wilson
Mother of Photo
Editor Megan Wilson

Wonder Woman because she gets things done.



Barbara Crowell
Mother of Managing
Editor Liz Mayfield

Superman. He's the only superhero who had a good sense of himself and who he was and he didn't have to go through self-defining moments of crisis.



Gay E. Roderick
Mother of News Editor
Travis Roderick

A ninja turtle because I like turtles, plus they like pizza and I like pizza.



Pam Bellanca
Mother of Ad Manager
Shannon Browning

Wonder Woman, as protector of the free world she might be able to handle disputes that arise in our neighborhood watch meetings.



Maria Lance
Production Manager
and Mother of Three

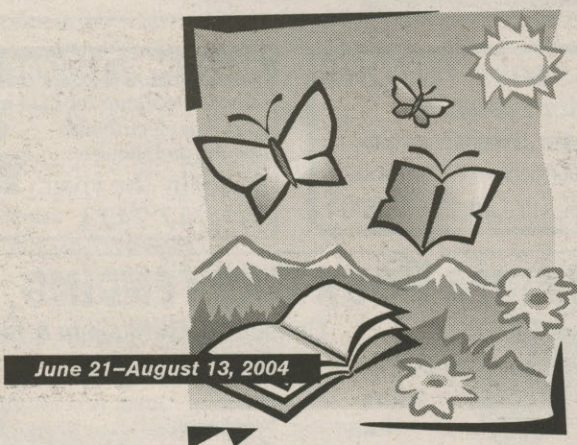
Spiderman, because he can climb the walls and clean up. Quite beneficial, actually.

Compiled by the Torch Staff

UNIVERSITY OF OREGON 2004 SUMMER SESSION

Check Our Website!

<http://uosummer.uoregon.edu>



June 21-August 13, 2004

*Book your summer
in Oregon*

Courses, workshops, and seminars, begin throughout the summer. No formal admission. Registration starts May 3.

Write or call for your free summer catalog
or order one from our website:



2004 Summer Session
333-N Oregon Hall
1279 University of Oregon
Eugene OR 97403-1279
(541) 346-3475, (800) 524-2404



UNIVERSITY OF OREGON

Pick up Torch and Denali Editor
applications in the Torch office,
Room 214, Building 18

Shift DOWN Your Rate

► Lower your payments -- Get some cash back

When the economy inches up, so do rates. That's why now is the time to refinance your auto and lower your payments with a rate as low as **3.69% APR***. To show you just how serious we are, we're willing to pay you to do it. You won't get charged a cent to refinance (title transfer fees covered by First Tech for all refinances over \$10,000), **and we'll pay you 1% of your loan amount.****

Call 800.637.0852 to lower your monthly payment and get the rebate, stop by any branch or apply online at www.1sttech.com.

Refinance amount	1% cash back rebate
\$10,000	\$100
\$20,000	\$200
\$50,000	\$500

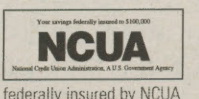
**as low as
3.69% APR***

No fees, cash back and refinance
options up to 72 months.

* Rates range from 3.69% to 11.49% based on credit qualifications and model year of the vehicle. These rates also represent a .50% discount. To receive the discount, members must choose the automatic payment option. Rates and terms offered are subject to change without notice at any time.

** First Tech will deposit 1% of the refinanced auto loan amount to your First Tech Credit Union account. Offer only valid for auto loans refinanced from other lenders. Offer valid from 4/1/04 to 5/15/04.

Eugene, Springfield, Oakridge | www.1sttech.com | 800.637.0852



2004

ASLCC Election

May 10 - 12

VOTER'S GUIDE

Ballot Measures

\$5 Athletics: Shall the student activity fee be increased \$5 for support of athletics and recreational sports?

The current Recreational Sports and Athletic student activity fee is not meeting student needs. The fee has not been increased since its inception in 1994. The Recreational Sports Program currently serves over 5,449 participants per year with on and off-campus events. The athletic programs currently serve over 120 full-time students will lose 25 percent of the program offerings due to board and approved budget reductions. If approved, the fee increase will increase the current recreational sport opportunities for students and their families, allow the sports eliminated through the budget cuts to remain as Club Sport programs, and allow the remaining intercollegiate sport programs to offer comparable programs to the 39 NWAACC colleges.

\$1 Child Care Co-op: Shall the student activity fee be increased \$1 for ASLCC childcare co-op to sustain the current level of services for student parents at Lane?

A \$1 increase will allow for continued services in low cost affordable childcare for student parents at Lane. A "wait list" is in place affording students' equal and impartial access to childcare services.

\$1 Child Care Subsidy: Shall the student activity fee be increased \$1 to subsidize the cost of childcare and the child development center for student parents?

Currently there is a demand for more on campus child care for student parents. The childcare co-op is currently operating at capacity. If approved, this increase would reduce the cost for student parents who have children in the Child Development

Center and expands the number of on-site childcare placements for student parents.

\$1.44 ASLCC Operations: Shall the student activity fee be increased \$1.44 to offset increased costs of the ASLCC Legal Services program and other operational expenses?

ASLCC Legal Services provides free non-litigation legal services to over 200 students per term. These services include name changes, non-contested divorces, child custody paperwork, and resolution of landlord-tenant disputes. ASLCC Legal Services are available to all credit students on the main campus. The portion of the fee that goes to ASLCC operations currently pays for the ASLCC Legal Services program (attorney contract, legal secretary and supplies). If approved, this increase will cover the costs of the attorney contract and other expenses.

\$1 Student Clubs and Organization Support: Shall the student activity fee be increased \$1 to provide support for student clubs and organizations?

If approved, the fee increase would establish a dedicated funding source for clubs and organizations to provide for leadership training, special events, club activities, student travel and training, and stipends. Funding decisions and budget criteria will be determined by a Council of Clubs, in conjunction with ASLCC and be bound by college and ASLCC policies and procedures.

\$1 International Student Program: Shall the student activity fee be

increased \$1 to help stabilize funding for the international student program?

General Fund support for this program has been eliminated and the total cost of the program is now placed on the International students who pay a \$150 fee (\$90 to enrollment services, 60 to International Student Program), on top of all other fees and a much higher tuition rate. ISP activities are open to all students on campus and attendance and participation in such programs as the Conversation Partner Program, social activities and ski trips are attracting increased numbers of resident students. If approved, this fee increase would help stabilize ISP funding during time of enrollment fluctuation and improve opportunities for all students to participate in program and activities.

\$1 Women's Program: Shall the student activity fee be increased \$1 to support programs and services offered by the women's program?

Student needs are not being met by current Women's Program service level, and the college is not in a position to increase general fund support. If approved this fee increase would be used to support:

- a) Transiciones, a bridge program to help Spanish speaking women access college classes and programs. Transiciones is a program that will assist Latina students into Lane's Transitions to Success Program;
- b) ACCESS. Currently this program is supported by some Perkin's funds but is not guaranteed. If approved, students will be able to receive additional support, advising, and career exploration activities.

ASLCC will host and moderate a candidate Q&A forum in the cafeteria on Monday, May 10 from 12-1:30 p.m. School issues and ballot measures will be discussed and debated. Students are encouraged to attend and participate in the event.

The Torch has independently compiled this Voter's Guide, which contains ballot measure summaries and a complete list of candidates with platform statements for the 2004 ASLCC election. The text of all platform statements are presented exactly as submitted by the candidates.

PRESIDENTIAL CANDIDATES

Sabina Davis

President



Vice President

Harla Olson

Davis-Olson

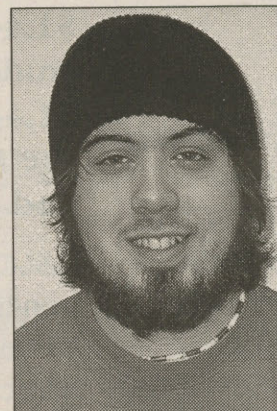
"With this being a legislative year (2004/2005), we realize how imperative our responsibilities to the students of Lane Community College are. The entire Higher Education Act, including everything from federal work-study, the Oregon Opportunity Grant and the Pell Grant, all the way down to the Head Start Programs, are up for renewal. It's vital that students' voices be heard on the issues of student funding by active lobbying at the State Capital. We know, as students of LCC, that we rely heavily on financial assistance and will work diligently to keep it intact in its entirety. The other important issues to date are the problematic

Banner system that has consequently caused many students to lose vital classes which were needed to graduate, and the need for a cohesive effort to utilize the many resources that are available already on campus to update and beautify our campus. We believe that as proven leaders in past positions we can be very vigilant at being the student advocates at the state and federal level. We will work with all student campus groups and utilize that overlooked asset. We will enable our campus to thrive and flourish into the future. Let your voice be heard now when it is needed most. Your vote is greatly appreciated."

McCown-White

"Lane Community College is one of the leading community colleges in the nation. Such a reputation of excellence creates the expectation of a progressive campus under equally progressive leadership. As a perennial academic powerhouse, Lane students deserve adequate student leadership. We offer that leadership. Our mission is to encourage diversity and simultaneously unify the campus. Through opening lines of communication between Lane students and their government we will achieve unity. By encouraging students to interact with one another and with their government, we will create an environment that is safe

and encouraging to every student. All students should feel connected to each other and this campus. In order to create such an ideal environment, we will work to break down racial, religious, class, gender and sexuality barriers that have the potential to create divisiveness among individual students and student groups. We believe the diverse backgrounds we represent will help us as mediators. The environment we will create will foster a desire for excellence among students that will prepare them to make positive contributions to our community, state, county and world."

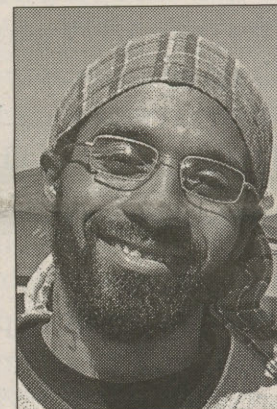


Tony McCown

President

Vice President

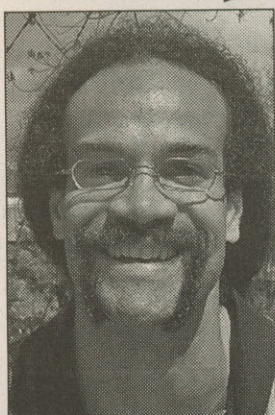
Shauku White



Riel-Glenn

Jeremy Riel

President



Vice President

Kevin Glenn



Jeremy Riel & Kevin Glenn present the Community Development Coalition, or CDC. The CDC is dedicated to the improvements of the education that students receive at LCC. Upon election as student body President and Vice-president, Jeremy & Kevin will give their dedicated, focused attention to increasing areas of concern for the students of LCC.

A four-step plan to improve the education of students at LCC.

Jeremy Riel & Kevin Glenn are warriors for student issues at LCC.

Jeremy Riel & Kevin Glenn for an agenda of STUDENT ACTION!

Communication – open channels between student & college is essential for the health of LCC.

Accessibility – Student government will be highly accessible and user-friendly to the students of LCC.

Visibility & Accountability – Student government will have all services presented clearly for the public.

Community – To strengthen the community on campus and improve the lives of the student body on campus.

Rios-Stull

"Saul Rios and Shana Stull will be leaders as students for students by the students. Directly working to increase funding at the state and national levels to ensure all citizens who want to attend LCC will have access to education. In addition to side-by-side campaigning with the Multicultural Center to expand and encourage educational opportunities for all citizens regardless of race, ethnicity, religious or sexual orientation.

With an opportunity-filled legislative year, we, as your team, pledge to improve access and affordability to campus childcare so that all working families have the same opportunities and access to education. We will emphasize and highlight cohesion and communication of all interest-based groups at Lane, to insure the visibility and activism of student government, including the equal representation for all Lane students."



Saul Rios

President

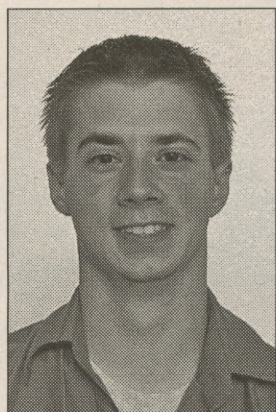
Vice President

Shana Stull



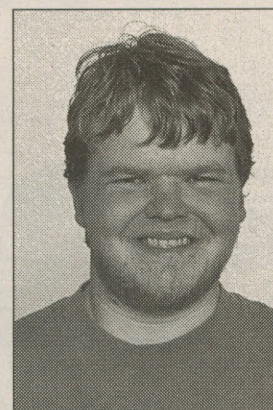
ASLCC CANDIDATES

Adam Davis



"I pledge to help promote the awareness and the activism of ASLCC among the student population. To improve access and affordability to higher education at LCC that everyone is entitled to. Also to further diversity and provide more education opportunities for all regardless of race, religion, ethnicity or sexual orientation. Furthermore to represent the ideals and students of the college to the fullest extent."

Ryan Koch

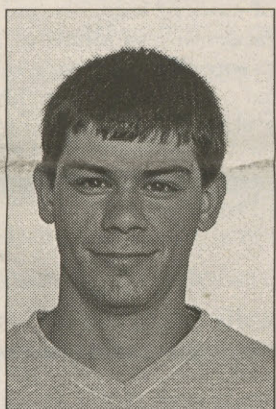


"Having been involved with ASLCC for three-plus years, I've realized that being with any student group to make the right decisions for the students is an extremely important job. Every student on this campus depends on having qualified representatives to make the right decisions for them and I believe I can fully represent the students. I fully intend to meet with students on a regular basis to bring their concerns to student government. I fully intend to keep up to date records of spending and what is available to clubs in order to make sure that the right decisions are made. I support appropriate club funding and I voted in favor of club funding proposals as an ASLCC senator. I believe my work with the Student Advisory Board and the Transportation Fee Committee as well as my past experience as ASLCC senator and communications director puts me as the right person for the job. I want to work for the students. Experience-Dedication-Education: that is what I believe students want and that is what I have. Vote Ryan Koch for Treasurer. Thank you for your vote."

Candidates for Treasurer

Candidates for Senators

Joseph Bosch



"As a senator I will have two main goals: To gain valuable experience working within a political body for the good of the people and more importantly to ensure that the concerns of the student body are actively and accurately represented within the student government. Some of the concerns that I am passionate about are: The outrageous prices of college textbooks; increasing amount of on-campus childcare so more Lane County parents can further their education; ensuring that LCC continues to strive for excellence in the areas of accepting and promoting multicultural diversity; fixing the poorly-programmed online registration system that caused untold amounts of confusion at the beginning of the term; and I am most passionate about getting more young people involved in the political process of our government – to include registering more young people to vote, encouraging voter participation prior to elections, and boosting voter confidence. This is going to be a great year and I look forward to working for each and every one of you."

ing amount of on-campus childcare so more Lane County parents can further their education; ensuring that LCC continues to strive for excellence in the areas of accepting and promoting multicultural diversity; fixing the poorly-programmed online registration system that caused untold amounts of confusion at the beginning of the term; and I am most passionate about getting more young people involved in the political process of our government – to include registering more young people to vote, encouraging voter participation prior to elections, and boosting voter confidence. This is going to be a great year and I look forward to working for each and every one of you."

Moriah Demers



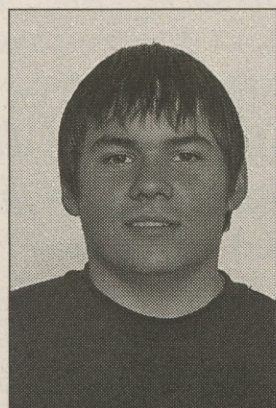
"I am seeking this office because I am deeply concerned about the direction LCC is headed. Students are losing the race for affordable, quality education; we deserve better. As a student senator I will do my best to preserve the quality of education we receive. Thank you for your vote."

Marcia Sexton



"I hope you'll take this opportunity to consider the candidates you can elect to advocate for the services that we all depend on here at LCC. I am running for re-election as an ASLCC senator. I've worked thousands of hours in the past year and gained conclusive progress for students. I could not have made this progress in any other ASLCC office. My work with the administration, faculty and classified staff has systemized the methods that students have to participate in the policy and decision-making processes that affect us here every day. Students will be able to use this system to ensure that the college's services address their needs now and in the future; it will enable students to help prioritize programs in the budget process and plan the direction that the college will work toward in the short and long terms. This work is crucial in the re-accreditation process, and I will see it through if re-elected. I am proud of the contributions I've been able to make as your representative this year and it would be a privilege for me to continue. My goals are to advance student interest in the College Council and the implementation of a new governance process, the Strategic Planning Committee, the Re-Accreditation, lobbying our legislators in Salem and Washington DC for funding, formalizing ways to give students credit or pay for helping make policy and decisions on campus, to continue to monitor and participate in LCC Board meetings, and improve the services and programs offered here for all of us, such as the Health Clinic. Using the momentum and experience I've developed this year, I hope to achieve even more next year. Thank you for your consideration."

Sandin Riddle



"I'm running for senator because I want to affect positive change and improvement here at Lane. I am very interested in the issues that are relevant to us students. I have been involved in the native American Student Association, the Oregon Students of Color Coalition, the Student Vote Coalition, as well as OSPIRG. I believe that the student government can work together with students, faculty and administration in order to make services more inclusive and bring Lane closer together as a community."

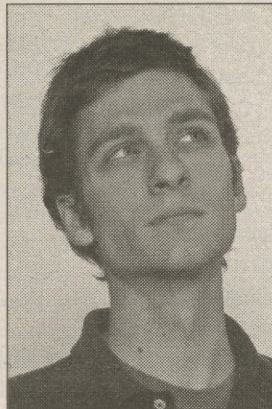
ASLCC CANDIDATES

Candidates for Senators cont.



**Chikaka
Takaoshi**

"My name is Chika. I am from a suburb of Tokyo called Chiba. Recently I have been working with OSPIRG and working on reviving the Asian Pacific American Student Union. I am running for senator because I would really like to learn how our institution works, specifically in finance and rights and responsibilities of students. Furthermore, I am looking forward to making improvements to reflect every student's voice and needs. I will be an advocate for the student body. Thank you for voting for me."



**Justin
Tittlefitz**

"I am running for senate re-election because I feel that involvement and cooperation are the best ways to improve the quality of student life here at LCC. I think that LCC has a multi-faceted student community who deserve the best learning experience possible and I want to continue to work both with and for them to move our school toward its maximum potential. I strongly encourage every student to come out and vote, and I thank you for considering me."



**Krystine
Watkins**

"My purpose as an ASLCC senator would be to represent the concerns of the student body and take action to resolve the issues presented to us in a timely manner. There are many issues pertaining to student success and satisfaction that I am particularly interested in working on. First I want to ensure the efficient and responsible allocation of student fees. Second I want to provide easy access for students to register to vote and make sure that they have unbiased sources of material on which to base their decisions on how to vote. In addition to focusing on these two issues, I want to be available to provide representation about any issues that students feel need to be addressed."

Candidate for Multicultural Coordinator



**Elizabeth
Rosso**

"If voted into the office as Campus Events and Multicultural Program Coordinator I plan to set up events that will embrace and bring all cultures together, yet allow each group to maintain their own identity. Once in office I will consider myself a representative of the students. My goal is to give the students what they want. I will do everything I can to make these events fun and educational. Thank you for your vote."

May 10 - 12

Get Out

&

VOTE

WHO: The Associated Students of Lane Community College will be holding it's annual elections.

WHAT: Registered students taking any credit class on the LCC main campus are eligible to vote their choice for President and Vice President, Treasurer, Campus Events and Multicultural Coordinator, and Senator as well as seven ballot measures constituting a proposed \$11.44 worth of student fee increases.

WHEN: May 10, 11 and 12

WHERE: There will be four polling stations located on campus on the election days: one in the cafeteria; one in the PE building; one in the Students First lobby; and one on the second floor of the Math/Science building.

HOW: In order to vote, students must present a valid photo ID to one of the League of Women Voters volunteers. The student's name will be found on a printed list and they will then be given a scantron ballot and be shown where to deposit it when finished.

If a student has chosen in the past to not allow their name to be distributed on any school list, they must obtain a copy of their current student registration or some other proof of current enrollment and show this to the volunteer.