



**One sweet job**  
Sweet Life a hit with employees  
**A & E • PAGE 8**

**Program grows wings**  
Flight technology leaving campus  
**FEATURE • PAGE 6**

# The TORCH

Lane Community College

VOLUME XLI, NUMBER 21  
APRIL 12, 2007

EUGENE, OREGON  
[www.lanecc.edu/torch](http://www.lanecc.edu/torch)



PHOTO NANCY ISHAM

**Protesters rally against the war in Iraq at the Federal Building in downtown Eugene, March 17. Hundreds of people marched from the Lane County Fair Grounds holding banners, signs and giant puppets to commemorate the fourth anniversary of the invasion of Iraq. Special guest Lieutenant Ethren Watanda, the first commission officer to refuse deployment to Iraq, spoke to protesters after the march. "Those who govern must be held to account," Watanda said. "No person, just as no country, can hold themselves above the law."**

## Spilde warns faculty, staff about layoffs

*Budget cuts made public on April 23*

**Larry Coonrod**  
EDITOR IN CHIEF

Lane Community College President Mary Spilde warned faculty and staff on Friday, April 6 that unless state legislators come up with \$71 million more for community colleges than currently proposed, the college will be forced to cut programs and staff.

"They heard things they didn't want to hear, and I said things I didn't want to say," Spilde said.

The co-chairs of the State Legislature's Ways and Means Committee have proposed \$458 million for community colleges, while Governor Ted Kulongoski submitted a request for \$483

million. The Oregon Education Association is asking for \$529 million.

Spilde said budget planning is being done using the governor's figure. Because of an unexpected rise in health insurance cost and the need to replenish the college's general fund to a board mandated level, LCC faces a budget deficit of several million dollars for the 2007-2008 academic year.

A budget review committee made up of students, faculty and classified employees have been working on means to balance the budget. Spilde said that by not filling vacancies LCC will save about \$2 million next year. Managers will not receive cost of living increases next year, saving LCC an additional \$800,000. The committee will be recommending additional cuts that "likely include pro-

**SEE SPILDE • PAGE 3**

## Health insurance could pose budget problem

*LCC faces problems coping with above average Insurance Renewal Rate*

**Sandy Wilcox**  
NEWS EDITOR

LCC's budget could be facing another blow, as its employee health insurance cost rises.

It is estimated that there will be a 17.6 percent increase to the overall cost of LCC's employee health insurance, bumping the cost from \$8.7 million to over \$10.2 million, leaving the college with over \$1.5 million that it would need to come up with.

LCC has only budgeted a six percent increase in health insurance costs for 2008-2009. It is congressionally required to cover at least 15 percent of the increase, for the classified and faculty union.

According to Dennis Carr, executive director for human resources, "Our claims experience (for this year) is over 20 very large claims. They are unusual, they are extraordinary, they are causing our

claims experience to exceed the amount of premiums we pay."

In an e-mail sent out to LCC employees, Mary Spilde, president of LCC, stated, "This is not anyone's fault - clearly if someone is sick that's exactly what insurance is for."

The budget for any increase in cost to health insurance coverage was low over the last two years. LCC has had an above average run of costs, causing the college to have a very small increase in employee health insurance premiums.

This is partly due to a switch in LCC's primary health insurance provider, from OEA Choice Trust to PacificSource.

During 2004-2005, LCC had a 4.1 percent increase to its health insurance, and during the year of 2005-2006 LCC had a 2.86 percent reduction after switching to PacificSource.

This trend of lower cost caused such

claims costs down through the health clinic access and through the wellness program," Carr said.

LCC has also attempted to lower its health insurance costs by making the campus health clinic available to faculty and staff, in the same manner it is available to students, as well as establishing the wellness program, in the hopes that it would cut some insurance costs, both to the college and the staff.

"One of the things we did, it wasn't just a redundancy, was to expand the student health clinic to take employees, and for the same reasons that is a very cost effective method for students,

it is a very cost effective for employees and we think it has helped some," Greg Morgan, associate vice president for finance, said.

### LCC insurance costs

		Total Cost		College Contribution	
		2003	2006	2003	2006
Full Time Faculty	Employee	\$445.90	\$489.31	\$388.36	\$426.43
	Employee + 1	\$980.88	\$1074.65	\$834.02	\$914.15
	Full Family	\$1234.35	\$1346.30	\$1049.02	\$1143.94
Management	Employee	\$389.41	\$489.48	\$389.41	\$489.48
	Employee + 1	\$826.06	\$1074.82	\$751.06	\$981.70
	Full Family	\$1036.03	\$1346.47	\$941.03	\$1228.53
Classified	Employee	\$375.14	\$472.30	\$375.14	\$472.30
	Employee + 1	\$811.79	\$1057.64	\$736.79	\$964.52
	Full Family	\$1021.76	\$1329.29	\$926.76	\$1211.35

a low prediction of six percent to be submitted for the 2006-2007 budget.

"You can (also) see that Lane beat the trend two years in a row by keeping our

### Index

EDITORIALS..... PAGE 2  
NEWS..... PAGES 3-5  
FEATURES..... PAGES 6-7  
ARTS & ENTERTAINMENT..... PAGE 8  
SPORTS..... PAGES 9-11  
THINK ABOUT IT..... PAGE 12

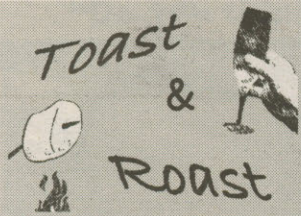
### Runner breaks record

McNamara leads track and field

**SPORTS • PAGE 10**

The Torch has been awarded first place in the Oregon Newspaper Publishers Association's General Excellence category for community college weeklies for 2004 and 2005. Second place 2006.





*Toast and Roast is written by the members of The Torch editorial board. It's a compilation of things that are commendable (toasts) and things that are condemnable (roasts).*

**Toast:** To NBA player Stephon Marbury for marketing \$14.98 basketball shoes. Can you really play ball in shoes that cost less than \$175?

**Roast:** To State Senator Kurt Schrader for blaming community college funding on poor administration. We think Kurt would be a good candidate for Brain Surgery 101.

**Roast:** To Don Imus for making racist and sexist remarks about the Rutgers women's basketball team. Imus, Michael Richards and Mel Gibson are charter members of the idiot celebrity club.

## Epidemic of negligence continues

Infection is the disease that we assimilate with those who have broken our hearts. They break what little trust we had into small, fragmented pieces. We go through a phase of recklessness and burden other hearts with our pain. We become the carrier of the infection.

When we're infected, we spread like sexually transmitted diseases at heroin parties. We trust and long and fear to be back in the position where we started. Love becomes a masochistic cycle to us that feeds on the burning inside our bodies. And we run around like a rally; gathering as many weak hearts as possible. The disease spreads and takes our broken heart along for the ride.

A broken heart is the doorway to an early grave. It digs and digs away at you until you stick both feet in the grave and shut the lid. Your thoughts and feelings become a mental coffin; surrounding you with pain and grievance. The emotions close in like a deadly case of claustrophobia until you're completely suffocated. You can

claw and scream for air and space, but your mind won't free you - the beginning of a conspiracy where your heart and mind are against you and are quickly winning the game of heartbreak roulette.

### Commentary

Déidre Moxley

Columnist



This catastrophic reality, in which your weakened senses have diminished all tangible stability, makes you susceptible to other infected elements. And along comes another predator of disease. You're played for the fool while the predator advances against every move you make to conspire against your pain. You fall into the trap they set and find yourself grieving in their sadistic company; all while they are sucking you in like a narcotic to a junkie. You become a mere representation of their Marquis de Sade. Just one more fix, just one more - it's what you need, they'll make it all better. And you are left speechless by their charming ray of consolation. You never learn. What a useless foible you've become.

Against all rationale, you find

yourself with an uplifted heart and hope. You feel like you're moving on, starting over, growing up. But, in reality, you're simply a pawn; the prey they caught so easily. You think that your infection is gone and the disease is cured. Meanwhile, you're sleeping with a living leprosy factory. And you fall deeper.

Quickly, oh so quickly, you begin to feel that stabbing cramp in your chest. They've found your core and are knocking against all your fragile barriers. You were learning to trust again. You ignored hesitancy and went straight past trust because they felt so tempting. Yet, it all feels so familiar.

Only, you realized too late and, again, you've been reintroduced to the infection that you hoped was gone. "Hello, infection. Climb back into the cocoon you made in my heart, it's been waiting." In your masochistic way, you find solace in that comforting pain because it's real and familiar.

Despite its damaging side effects, this disease puts every thing into perspective and corrupts your mind. You can never trust anyone again because, to trust someone,

you'll have to take off your protective gloves and risk more pathogens. But, you can't do that - not because you don't want to spread your leprosy, but because everyone else is a carrier and you can't let them in. No one will understand your pain. Everyone will be against you, they'll mock you, and they'll call you weak. You think that your disease will never be cured, that you will ache forever because something is wrong with you.

You find the only way to stop the pain is to end it, forever. So, you're gone - but the disease spreads and you died with nothing but an infection that would have been cured if only you had won the war between your heart and your mind. But, you failed ... and so did those closest to you. The epidemic of negligence continues.

In 2006, suicide was the second leading cause of death among Oregonians aged 20-24. It's the leading cause of U.S. college deaths, resulting in about 1,100 each year. Don't let those you love become just another statistic.

Eugene Crisis Intervention Line: (541) 687-4000, (800) 422-7558.

## LETTERS TO THE EDITOR

### Spooner responds to Shine

In the April 5 issue of the Torch, Dennis Shine wrote that Mitt Romney has shifted on several issues from a relatively leftist position when he ran for Massachusetts governor to a more conservative stance now that he wants to be the Republican nominee for President. He then asserted that as a candidate for the LCC Board, I'm a lot like Romney. Specifically, that I once supported raising tuition for seniors, cutting down on expensive Professional-Technical courses, and closing the Women's Program. For these reasons, he told his readers that they should support someone reliable and predictable like Roger Hall.

It's a silly letter. The three points he raises are, respectively, probably wrong, certainly wrong, and outdated.

Four years ago, I commented that state subsidies are better spent on young people than senior citizens. I don't honestly recall saying anything about relative tuition rates. In fact, over the past four years I've argued that

getting lower tuition from seniors who help fill otherwise half-empty classrooms makes economic sense and is not a subsidy.

Contrast that with the voting records of Roger Hall and Dennis Shine. There had been a long-standing policy to offer a 50 percent tuition discount to seniors. This was abolished in the FY04 budget, for which Roger and Dennis both voted. Roger and Dennis also supported the policy of raising tuition automatically at a rate that regularly exceeds CPI. It's now the second highest in the state. Under a sequence of Hall-Shine budgets, seniors have seen their tuition nearly quadruple.

I have never said that professional-technical courses should be cut. I've said that transfer courses must be expanded to raise enough money to pay for all the cash-draining elements of the college, including most P/T courses. I've described that policy as focusing on transfer, which can be misleading if you're not paying attention. The record for Roger and Dennis is different. In 2003, the college proposed to close

the jewelry-making program. At public testimony, students spoke about the positive effect the program had had on their careers. Their words fell on deaf ears. The FY04 budget eliminated the program. Roger and Dennis voted for that budget.

When I first commented on the Women's Program in 2003, I was under the impression that it was not providing any instruction. Once I learned that it did, I stopped saying that it should be eliminated. Its budget is a mixture of items that I don't fully understand, so I'm taking no position on it.

However, the proposed FY07 budget contained a large cut to the Women's Program and in public testimony, Margaret Bayless testified to the vital role that Transitions to Success plays in the lives of women. Nevertheless, the cut remained in the budget, which Roger and Dennis both voted for.

I'm not suggesting that Roger and Dennis are now shown to be anti-senior, anti-P/T, and anti-women. What it really shows is

the futility of trying to apply a litmus test to every word and action over a period of years during a complicated and ever-evolving budget process.

The Board needs some fresh ideas, and "Better Spooner than Later."

**Rob Spooner**

LCC board candidate

### Debit card disappointment

I'm deeply disappointed by the April 5 Torch article about the LCC debit card. Over ¾ of the article consisted of direct and indirect quotes from Lane administration and EduCard representatives, but there was not one quote from any LCC student or student representative. This seems to be an accurate representation of the lack of student input that went into the card from the start.

ASLCC's concern about fees was portrayed relatively accurately if not clearly, but we also voiced many other concerns. For example, Lane's reputation will be tarnished due to having its name on a card that charges unreasonable fees. Card-related inquiries

will be added to the workload of an already overburdened Enrollment Services and computer lab staff. Also, the card is another example of the ill-advised trend toward privatization and corporate sponsorship in public colleges, a trend that prioritizes profit at the expense of students.

However, the biggest fact omitted from the article was that ASLCC is advocating for a direct deposit option. It should be noted that LCC staff and faculty have this option while students don't.

Furthermore, ASLCC does not support breaching the EduCard contract. We simply don't want LCC to renew in August.

LCC administrators maintain that this system allows students to get their financial aid sooner. But the disbursement still happens the same week as the check—just three days earlier. Students I've talked to need their money three weeks earlier, not three days.

For more information, visit <http://www.myspace.com/nolccdebitcard.com>.

**Rob Dow**

ASLCC Senator

## The TORCH

The official student-managed newspaper of Lane Community College is published every Thursday.

### Submission Guidelines

Letters to the editor should be limited to 250 words. Commentaries should be limited to 750 words. Please include the author's name, phone number and address (address and phone number are for verification purposes only and are not for publication.) The editor in chief reserves the right to edit letters and commentaries for length, grammar, spelling, libel, invasion of privacy and appropriate language.

### Editorial Board

Editor in Chief ..... Larry Coonrod  
Managing Editor ..... Ariel Burkhardt  
News Editor ..... Sandy Wilcox  
A & E Editor ..... Whitney Johnson  
Copy Editor ..... Ariel Burkhardt  
Graphics Manager ..... Dan Barton  
Features Editor ..... Mario Saraceno  
Sports Editor ..... Josh Hutchins  
Assistant Sports Editor ..... Alex Braga  
Production Manager ..... Joel Thompson  
Assistant Production Manager ..... Jessica Joy

Photographers ..... Sean Hoffman  
Michael Brinkerhoff • Moy Megill  
Columnists ..... Déidre Moxley  
John Mackwood  
Reporters  
Nicole Perkins • Willa Bauman • Nancy Isham •  
Megan Workman • Zackary Pacholl  
Distribution Manager ..... Nathan Tripathy  
News & Editorial Adviser ..... Frank Ragulsky  
Production Adviser ..... Dorothy Wearne

### Contact Us

EDITOR IN CHIEF ..... 463-5655  
NEWSROOM ..... 463-5881  
PRODUCTION ..... 463-5109  
ADVERTISING ..... 463-5654  
E-MAIL: TORCH@LANECC.EDU  
MAIL: THE LCC TORCH,  
BUILDING 18 ROOM 218  
4000 E. 30TH AVE.  
EUGENE, ORE. 97405



# Prominent student dies; autopsy pending

*Friends and teachers reminisce about Nadine Mitchell and her life*

**Ariel Burkhardt**  
MANAGING EDITOR

Students, teachers and friends mourned the death of literature and film student, Nadine Mitchell, 54, who died on March 25.

The cause of death is unknown and pending an autopsy report.

Kendal Wallace, a classmate of Mitchell's, remembered her as being one of the most compassionate human beings she had ever known. "She would go out of her way for other people," Wallace said. "She brought a lot of good to the campus. She advocated for the homeless and was very gifted intellectually."

"The only way to miss Nadine was if you ignored her. She had a passion for literature, arts and film. I'm glad to have had her in my classes."

Wallace said she was able to spend some time with Mitchell a few days before she died. Wallace was walking at Lane Community College and saw Mitchell and decided to stop and say hello. They

chatted casually for 20 minutes. It was the last time Wallace talked to Mitchell.

"It was the 20 minutes we'd all like to take for another person," Wallace said.

Mitchell worked for a housing program at Shelter Care where Susan Ban, the executive director, said Mitchell would be missed.

"She was a very special person," Ban said. "She was sensitive to people. She was calm and would listen to them. She had a great touch."

Mitchell ran a diagnosis group through Shelter Care for people with mental illnesses and drug abuse issues along side the housing program. "We'll all miss her," Ban said.

LCC literature instructor Jeff Harrison said Mitchell enjoyed nine of his classes during the time she was a student.

"She was very creative and very generous," Harrison said. "She had a great sense of humor; she loved laughing. She'd care about the students' well being as

much as her own."

Mitchell would go to reading groups hosted at Harrison's residence once a week with other students. "She had a voracious curiosity and a desire for knowledge."

Harrison said she wanted to tutor students in Shakespeare, and he felt like whatever Mitchell had to say, in and out of class, was important. Harrison said she would try to get students to go with her to plays, speakers, and often, a pottery workshop at Brush Fire. "She would share with students," Harrison said. Harrison attended Mitchell's memorial on April 1.

Dan Armstrong, film studies instructor at LCC, remembered Mitchell not only as a student, but also as a person and friend. "She had taken a number of film classes and was a long time lover of books," Armstrong said. He also said she was very sociable, easily intimate and Mitchell would frequently come by his office to chat. "We developed a real friendship. She had remarkable honesty and directness."

Armstrong felt she supported wisdom and intelligence when faced with problems and students

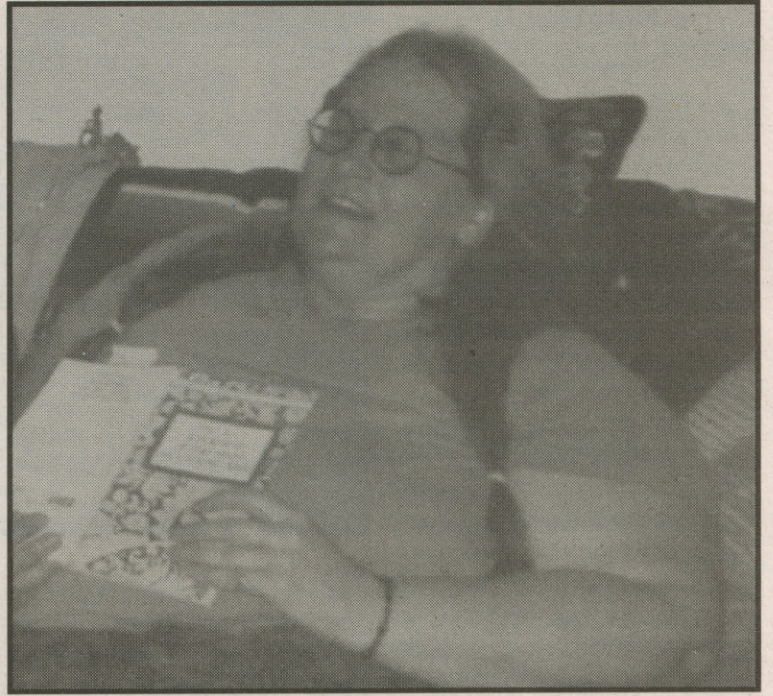


PHOTO COURTESY OF JEFF HARRISON

**LCC student Nadine Mitchell died on March 25 of unknown causes. Memorial services were held April 1.**

looked up to her, despite usually being the senior student. Armstrong witnessed her share personal information with other students in classes that would contribute to the group. "She got involved in people's lives," Armstrong said.

Mitchell wanted to be a teacher

but recently decided she wanted to mix her love of literature and film and become a librarian.

Mitchell is survived by her two sons, Nicholas and Aaron, and a brother, Marvin Waschke, who lives in Bellingham, Wash. where Mitchell was born.

## Mary Spilde speaks From Page 1

grams," Spilde said.

Even with unfilled vacancies, cost of living freezes and other reductions, an additional \$3.5 million in cuts must be made to balance the budget.

Spilde told college staff that payroll is 80 percent of the college's expense and the \$3.5 million will come in the form of layoffs unless the faculty and classified unions can work with the administration on voluntary reduction. Such reductions might include unpaid days off and increasing classroom productivity by increasing class sizes or canceling classes that have only a few students.

To show the magnitude of the layoffs LCC is facing, Spilde presented a graph of how many employees would need to be laid off in order to balance the budget. According to her figures, \$3.5 million could be saved by eliminating either 48 contracted faculty, 75 classified employees or 38 management positions.

"Clearly it would be some combination of these if we have to do that," Spilde said.

Both classified and union employees have contracts through 2008-2009 and Spilde cannot reduce their pay or benefits. Union members would need to make voluntary concessions.

Jim Salt, president of the Lane Community College Education Association said the LCCEA had not yet agreed to any of Spilde's recommendations and that mem-

bers are meeting this week to discuss the issue.

"We're going to consider whether we're going to consider it," Salt said. "We'll probably meet with the administration to see what she is proposing."

Salt said that he believes there are other revenue streams that the administration has not fully considered, particularly increases in enrollment.

"The administration is projecting zero percent growth next year. Departments have suggested a variety of ways individual departments can increase enrollment in addition to the general marketing the college does," Salt said. "Each additional one percent increase in enrollment brings in about another \$215,000."

Greg Morgan, LCC associate vice president of finance, said the administration is looking very hard at increasing enrollment but they are not optimistic because credit enrollment has been flat and cuts in programs and staff will most likely have a negative affect on enrollment. "It's hard to cut and expect more students," Morgan said.

By law, the college's budget must be based on reasonable expectations and Morgan said the administration has to be conservative when considering the prospect of raising enrollment numbers.

"We'd like to be as optimistic as the unions, but hope is not a strategy," Morgan said.

If the college is forced to initiate layoffs, Spilde said the consequences to LCC could lead to a continuing trend of fewer classes.

"Layoffs are a downward spiral because when you lay people off you have fewer programs and services, therefore fewer students and not as much tuition and then you don't get as much money from the state and then you have more layoffs," Spilde said.

If the legislature were to adopt the proposed \$458 million community college budget it would increase LCC deficit by about \$1.5 million.

"I'm confident that we'll get more than Ways and Means has recommended, there has been a lot of pushback from educators and the public. What I'm afraid of is that they'll get it back to the \$483 million, declare victory, say 'we came through for community colleges' and go home," Spilde said.

The college is building a budget based on the governor's recommendation but is still working to get the \$529 million recommended by the OEA through lobbying and attending legislative hearings, Spilde said.

Cuts recommended by the budget review committee will be presented to the LCC Board of Education board meeting on Monday, April 23.

Spilde said that after a public input, the board will decide on a final budget sometime in mid-May.

### Classifieds

#### For Sale

**TI-83 Calculator**, \$50. Women in Transitions textbooks-\$10 for both. All in excellent condition. Make offer at 513-8359.

**\$\$ Sell me your** Student Solutions Manual for (Barnett) College Mathematics 10th Edition text. Call Will 541-654-1933.

#### Rooms for Rent

**\$425-Quiet, no smoking.** SE Eugene house, kitchen/laundry privileges, direct bus LCC/UO. Must like Yorkies. 344-1885.

#### Announcements

**ATTN: Student Veterans** and Military Service Members Are you interested in establishing a Veterans/Service Member Interest Group? Come meet Thursday, April 12 at 3:30 p.m. in Bldg 16, Room 211.

#### Events

**Career and job fair**, April 18, 10 a.m.-2 p.m., Center for Meeting and Learning, Building 19.

**April 19** bring your old incandescent light bulb and get a FREE CFL light bulb. Same 150 #'s of carbon. In the Cafeteria 11-3 p.m.

#### Scholarships

**Come to CES** to pick up an application for the Coca-Cola Scholarship. Must be returned by May 18, 2007.

**Take Aim Scholarship deadline** is May 4, 2007. Contact CES for more information or visit [www.centerforstudentsuccess.org](http://www.centerforstudentsuccess.org).

#### Help Wanted

**Part-time Counselor** (job ID # 491703) to oversee mental health services for residents in a transitional housing program. For more information go to The Workforce Network in Building 19 Room 265.

**Part-time Barista position** (job ID # 491615) 12-25 hours a week. Visit Building 19 Room 265 for more information.

**Front Desk receptionist** (ID #1254) off-campus job 10 to 15 hours a week in a medical office. To apply visit [www.lanec.edu/ces](http://www.lanec.edu/ces) or visit Career and Employment Services for more information.

**Full-time customer service position** (ID #1250) \$9 an hour. Must be able to multi-task, type 40wpm, work well under pressure and have transportation. To apply visit [www.lanec.edu/ces](http://www.lanec.edu/ces) or visit Career and Employment Services for more information.

## Not afraid to ask the tough questions?

The Torch is looking for writers who can inform, entertain and excite readers with stories about local news, events and people.

We are also looking for photographers.

No experience needed. Contact

**Larry Coonrod at 463-5655.**



## Circulators gathering signatures for 2008 election

**Larry Coonrod**  
EDITOR IN CHIEF

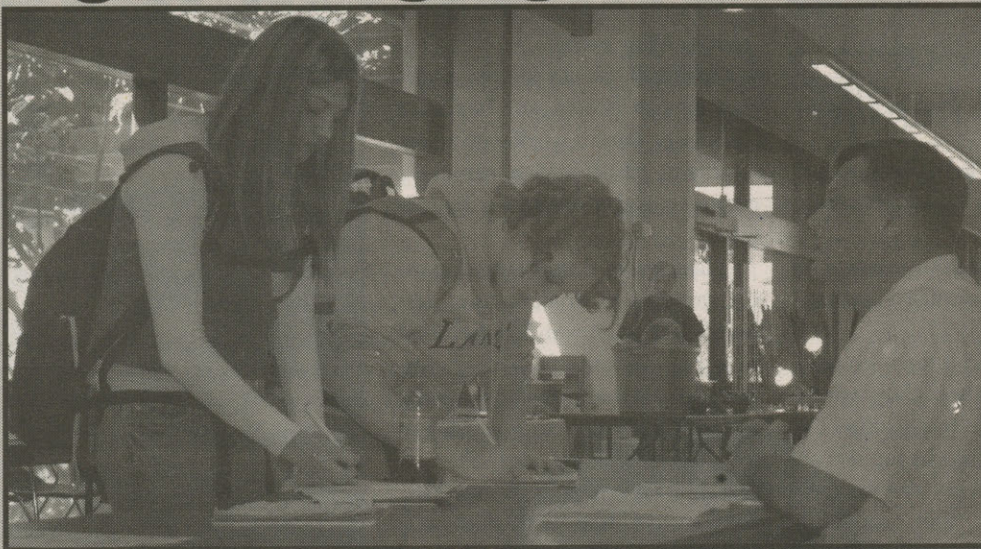
With last November's election a distant memory to most people, political operatives are hard at work qualifying ballot initiatives for the November 2008 elections. According to the Oregon Secretary of State's web site, 85 ballot initiatives have been filed for inclusion in next year's election.

Proposed ballot measures range from limiting how much lawyers can charge per hour to requiring one to two years English immersion classes for non-English speaking students.

The Secretary of State's office decides the title of the ballot measure and many ballot sponsors will resubmit the same ballot if they don't like the title, hoping to get a new title with what they feel is more public appeal.

Once an initiative has been approved for circulation, backers must gather enough signatures of registered voters to have their initiative certified as a ballot measure and appear on the ballot in the next general election.

For initiatives that make statutory changes to Oregon law, that number is 82,679. Proposed changes to the Oregon constitution require 110,358 signatures to qualify for the ballot. The



**Students Jenni Gonzalez and Kassandra Sanders sign petitions as circulator John Laws explains each ballot initiative.**

PHOTO BY LARRY COONROD

number of required signatures is based on a percentage of registered voters who voted in the last general election.

To gather enough petitions, backers can opt to pay signature gatherers. Eighty-four of the current initiatives are listed as "will pay petitioners." Gathering initiative signatures is a bit of a cottage industry in Oregon with some petitioners making a year round living.

Former Marine John Laws frequents the Lane Community College cafeteria at the start of new terms to gather signatures from students. Laws, who works for a signature-gathering company in Portland, Democracy in Action, said he has made a full-

time living gathering signatures for the past seven years.

On a recent afternoon at LCC, Laws presented passing students with seven different initiatives to sign but said that he may not personally believe in every initiative he gathers signatures for, but "I do believe in the right to vote on everything, good and bad."

Laws estimates that only one percent of the people who are hired to gather signatures are successful at it.

"It's hard to take rejection. You have to be able to look past that rejection for the next person who wants to help out," Laws said.

As if to illustrate his point the

next three people who passed by his table either shook their heads no or averted their eyes when Laws asked them to "help get mandatory jail time for identity theft." A few moments later, four students were busily signing while Laws answered questions, continued to call out to passing students, and encouraged signers to go sign all seven initiatives.

Laws said that the previous day had gathered over a thousand signatures while lamenting the fact that LCC restricts his signature gathering to the cafeteria.

"The problem is they put us in the what they call the free speech area and we see only the people who come by here everyday. Some students never come

in this building," he said.

Laws did not disclose how much he is paid, but all petition circulators in Oregon are paid by the hour.

In years past, circulators were paid per signature and critics claimed this lead to fraud, as circulators would often get a voter to sign one petition and then forge their signature on several other petitions.

In 2002, voters approved Ballot Measure 26, which stipulates circulators can only be paid by the hour. The measure does not prevent companies that hire circulators from requiring a minimum number of signatures per hour.

"There are several categories of election law that circulator complaints can be filed under depending on what it is, but overall we haven't seen any real decrease in complaints since the law took effect," said Norma Buckno, compliance officer for the Secretary of State Office's Election Division.

Forging an initiative signature is a class C felony and is punishable by up to five years in prison and a \$125,000 fine.

More information on pending initiatives can be found on Oregon Secretary of State's web site: [www.sos.state.or.us/elections/](http://www.sos.state.or.us/elections/).



# powered by innovation

## powered by the people



**Lane Transit District**

at your service

**Lane Community College is a leader in our community and in the transportation world. All students may ride LTD every day by simply showing their LCC bus pass\*. Good for students, good for campus, good for the environment.**

\* Visit [www.ltd.org](http://www.ltd.org) for details

**687-5555 (800-735-2900 TTY - Oregon Relay) [www.ltd.org](http://www.ltd.org)**



## NEWS FLASH

The LCC Foundation is looking for volunteers to help out during several events.

The All About Business event, April 24, in the Center for Meeting and Learning in Building 19, Room 103 is looking for volunteers for two available shifts. Hospitality volunteers are needed to welcome and register guests for an early bird shift from 6:45-7:45 a.m. The second shift is to thank the guests for attending and collecting pledge cards from 8 a.m.-9 a.m. For more information students can call 463-5538.

The second event is a Nursing Alumni Reunion on May 19. Nursing students are needed to work with a faculty committee to lead tours from 10 a.m. to noon. Nursing students can assist with the luncheon registration from 11 a.m. to 1 p.m. or assist with public reception from 1-5 p.m.

The third event needs volunteers for the President's Circle Reception on May 14. Positions are needed to make thank you calls and invite donors to the reception. Callers needed for the week of May 7. For more information contact Michele Erickson at 463-5804.

**The Reading Together Project at LCC** is bringing Eddie Little Crow to speak on April 19 from 10-noon.

Little Crow (Lakota, Dakota Poet and Elder) is a poet, former member of the American Indian Movement and continues traditional work throughout the Northwest. He will be presenting work from his book, "Dreaming of a True World, A Opchine WaLa Oh-kon," co-authored with Antoinette Nora Claypoole. His focus will be being American Indian in a white world and will include selections from his poetry, his history with AIM and his life lived as a Lakota both on and off the reservation.

The event will be held in the Center for Meeting and Learning, Building 19, Room 102. For more information go to [www.wild-members.com](http://www.wild-members.com) and click on Ed Little Crow or contact Ellen Cantor at 463-3660.

**The LCC Jazz program** is having the annual spring Faculty Jazz Concert on April 24.

This year's concert will be featuring calm, cool tones of West Coast Jazz. LCC theatre instructor Patrick Torelle will be reading from poetry by Lenny Bruce. Proceeds for this annual spring jazz concert provide funds for the John Workman Memorial Scholarship.

The concert will be at 8 p.m. in the Blue Door Theatre, Building 6. Tickets are \$8 for adults, \$6 for students and senior citizens and may be purchased through the Lane Ticket Office by phone at 463-5202.

**Oregon Students Public Interest Research Group** is having an educational event for Campus Climate Challenge.

This educational event features a light bulb exchange. Students can bring in their incandescent bulbs and exchange them for more efficient fluorescent bulbs.

The OSPERG event is April 19 in the cafeteria from 11 a.m.-3 p.m.

# Hi-tech innovation helps entrepreneurs succeed

Mario Saraceno  
FEATURES EDITOR

The Center for Hi-tech Innovation is a non-credit program at Lane Community College designed to help people with great ideas and develop them into marketable inventions.

The founder of the program, Jon Broome, with a masters of business administration degree is the program's instructor. He said, "We have identified a need in the community for certain types of people. One is a person who has an invention they want to launch."

The business innovation program has been available for about seven months. According to Broome, the classes are continuing to fill up fast.

Broome works with the students who come in and want directional help for their ideas. "I help with the business end of it but also help them with the design, material selection, how to get a prototype made and help them find markets to get it sold. We go from the light bulb to the dollar sign," Broome said.

In between the classes the students work at home and build on their projects. The goal is to get their ideas launched into the market. "Most people don't come in here wanting to start a business. They're in what I like to call the via creativa or the way of creativity. It's like a big cloud of energy with tons of creative ideas that isn't going anywhere. I like to help them reach via positiva or the way of positive motion. That is the fun in the program because it is about human development," Broome said.

There are about 85 people in the various programs offered at the Centers for Hi-tech Innovation. Most are working on what Broome likes to call "wacky inventions" of their own.

The Innovation to Business Marketing classes is not all that is available through the Center for Hi-tech Innovation.

"In addition we have the innovators open forum for anyone who wants to come with ideas and get feedback from other inventors. The money paid at the door, which is around \$5, goes back into the LCC foundation," Broome said.

Above the \$5 price to have ideas heard, is a \$99 Invention to Market Fast-track program. Last year they only intended to run the workshop one time and ended up running it three times because the waiting list kept growing.

The Center for Hi-tech Innovation is also something designed to help out the commu-



PHOTO BY LARRY COONROD

**Huckleberry Fence production manager Jason Thomson displays a Tahoe gate. Thomson said that unlike conventional gates, the Tahoe gate will not sag. With the help of the LCC Biz Center, the company hopes to distribute the gates through Jerry's Home Furnishings.**

nity around it by being a direct reflection of what the community wants to see available in the community college. "As a result we have been helping about 1,200 businesses a year. Most of which are new to the business center who wouldn't normally be involved with the business center," Broome said.

Broome sees the Center for Hi-tech Innovation as something that is just continuing to grow at LCC. "I would like to see what we're doing here at LCC spread throughout the state because I am convinced that there is a demand for this program around the state," Broome said.

The Center for Hi-tech Innovation is only located at the small business center right now. "We have had requests from five different business centers and five different community colleges to teach the basic invention to market fast track so they can get that going and introduce the introduction to business management class down the line in future years," Broome said.

Northwest Community Credit Union created a no-interest loan fund. If people want to take classes from Broome they can apply for a voluntary repayment

loan. The loan is designed to pay for the money borrowed as the borrower can. "I want people to feel like they can repay it without feeling like they're receiving charity. This is what we classified as the 'pay it forward' fund. The money gets paid back and we can use it for someone else," Broome said. U.S. National Bank has also given money to the program, which they are planning on using for the "pay it forward" fund.

Broome offers one-on-one counseling with any individuals who want some consultation on what to do with their inventions or ideas. "If somebody wants to call me and talk to someone about their invention they can set up an appointment and see me for free," Broome said. The service is paid for by the small business administration.

"There is not another in depth innovation course anywhere else in the state to my knowledge," Broome said.

Students who would like more information on the Center for Hi-tech Innovation can contact Broome at 463-5255 or e-mail him at [broomej@lanecc.edu](mailto:broomej@lanecc.edu). For further information visit the website at [www.bizcenter.org](http://www.bizcenter.org).

**"I want people to feel like they can repay it without feeling like their receiving chairty. This is what we classified as the 'pay it foreward' fund."**

•Jon Broome  
business advisor



## Recruiting for 2007-08 Student Service Associates

**Need a job?**  
Do you like helping people?

Attend an SSA Informational Meeting:

**Tuesday, April 17th**  
1-2 pm in Bldg 1/224

or  
**Friday, April 20th**  
2-3 pm in Bldg 1/222

or  
**Wednesday, April 25th**  
3-4 pm in Bldg 1/222

**Applications are due in CES Tuesday, May 1st at 5 pm**

**Questions?** Call Christina Salter at 463-5813 or Tammy Simpson at 463-5296

The Counseling Department is recruiting for 2007-08 Student Service Associate (SSA) positions. SSAs serve as peer mentors assisting fellow students with career information, employment resources, scholarship research, class scheduling and ExpressLane functions.

For more information come to Career and Employment Services in Bldg 1/Room 102 to pick up an application or go to [lanecc.edu/CES](http://lanecc.edu/CES). You are also encouraged to attend an information session (see side bar).

If you enjoy being a part of a team, and have a strong service orientation, we hope you will consider applying.



# Flight Technology:

**Mario Saraceno**  
FEATURES EDITOR

The flight technology program will be making changes to become a fully self-supporting program to meet the criteria set down for the next fiscal year.

In a board meeting held on March 14, board members as well as people from the flight technology program, made proposals for what needs to happen in order to help the flight technology program become self-supporting.

"This is not a new event at all. I have been in the process of very, very slowly making changes to the program for years," said Harvey Birdseye, director of the Lane Aviation Academy.

Birdseye also said the program is not being forced to make changes but that they have been needed for a very long time. "We have never been fully self-supporting, almost but not quite. The only thing that happened in that board meeting was them saying 'now you have to become fully self-supporting.' That was no surprise package at all," Birdseye said.

"At the time I came in and took over this program we had a fairly substantial general-fund support for this program. Post 9-11 however, we lost all of the general-fund support for this program," Birdseye said.

The program is contractually obligated to make sure that it meets the minimum revenues for its leased aircrafts.

The proposal that came out in the board meeting was either the program becomes self-supporting or they absorb it.

"What that does is postures things, politically it says you gotta make a change, you can't hang around here any longer, some-

thing has to happen," Birdseye said.

"We have to be able to show our ability to be self-supporting as we go into the next year. We will have to demonstrate a plan. This is a phase process, it's not like it needs to be done by next week. We start the 2007-2008 budget on July 1. This change is preparatory for the next fiscal year. So we're not looking at a hard date we gotta do things by," Birdseye said.

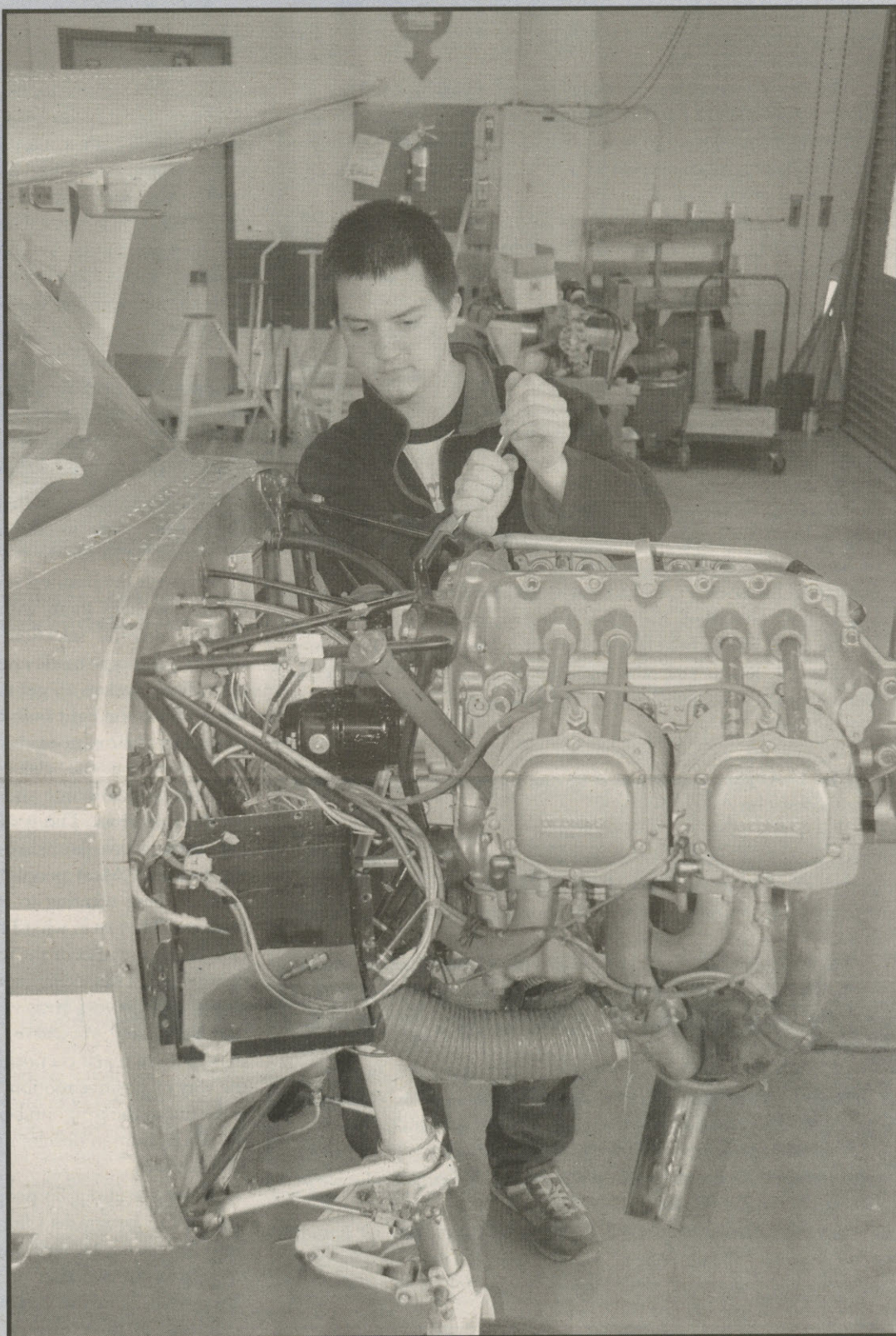
According to Birdseye, the program needs revising because it needs to be economically more efficient. "And that is going to be a set of changes that is going to help us accelerate our rate of development and is not going to impede our progress at all," Birdseye said.

The program is looking to become long-term. In doing so, it is looking to move the entire aircraft maintenance program out to the airport. By Fall term they are planning to have the entire aviation program out at the Eugene Airport.

"The big deal about getting off the campus is the fact that the aircraft maintenance program occupies a lot of square footage on campus," Birdseye said. "By consolidating the programs on the airport it opens up a lot of square footage on campus for a lot of other applications."

Birdseye said the program would then be able to expand the comprehensiveness of the all-around program and it would be a major attribute, giving the program a lot better utility to use the resources in the aviation program overall.

"I have a lot more opportunity then to do a lot more interactive work between the pilot program



PHOTOS BY MOY MCGILL

(above) Aviation maintenance student Andrew Rasmussen works on a small aircraft engine. (opposite) These aircraft will soon be moved from Building 10 to the Eugene Airport to make more classroom space.

**"What's going on here and now is helping us make some necessary changes. The program is definitely alive and well."**

•Harvey Birdseye  
director of lane aviation academy





## Program administrator responds to self-supporting proposal

*Program leader seeks industry help; makes long-awaited changes*



and the aircraft maintenance program. There are some courses that the aircraft maintenance people do that would be good for pilots. The set-up now is not at all convenient to dual use between these facilities," he said.

One of the partners with the flight technology program is Horizon Air. Horizon Air announced that it will provide an unlimited number of scholarships for aircraft maintenance technicians if they agree to work for Horizon Air for one year.

"Horizon has also donated a simulator to us as well. So we are getting some support in that form. Thus far the airlines are not putting sums of cash into the program," Birdseye said.

There is a huge shortage of aircraft maintenance technicians in the industry. The need is for about 10,000 people over the next five or six years. Pilots are in much of the same situation. "If I had enough pilots I could place 20 pilots a month into the industry. I can't generate anywhere near that many. But that is what the industry demand is," Birdseye said.

According to Birdseye, programs like this will continue to be the backbone of the civilian avia-

tion industry. "We need to expand this program by at least five times because there is a marketplace for it," Birdseye said.

"What's going on here and

now is helping us make some necessary changes. The program is definitely alive and well."

This year is the 40-year anniversary for the flight technology

program at LCC.

The program has delivered more than 270,000 hours of pilot training without an injury. "So we are the nation's premier

pilot-training program in terms of flight training safety by about eight times over. We are not going to interfere with that at all," Birdseye said.

## Lane Community College 2007 *Taking Flight* CAREER FAIR

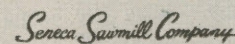
WEDNESDAY APRIL 18  
10 AM - 2 PM

4000 E 30th Ave. Eugene, OR  
Center for Meeting and Learning Building 19

- NETWORK with Employers
- INTERVIEW for current job openings
- WIN free tuition and prizes!
- Have your resume tuned by professional career advisors

For more information, please visit the Career Fair website at <http://www.lanecc.edu/ces/>

LANE COMMUNITY COLLEGE  
WOULD LIKE TO THANK:



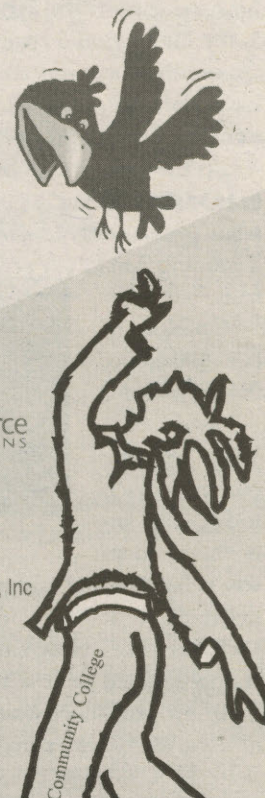
Lanz Cabinets

Market of Choice  
Shari's Restaurants

Personnel Source, Inc.  
U.S. Bank



an equal opportunity/affirmative action institution





APRIL 12, 2007

# Sisters bring French patisserie to Eugene

*Sweet Life: the name that doesn't exaggerate even for a sweet tooth*

**Whitney Johnson**  
A&E EDITOR

One of Eugene's prime examples of creativity and innovation is the Sweet Life Patisserie located at 755 Monroe St. Sweet Life has come a long way in the 14 years since its inception in a small garage.

Sisters Catherine and Cheryl Reinhart may hold their degrees in French and government respectively, but creating a French inspired bakery became their mutual passion in the fall of 1993.

After a trip to France, the sisters realized that there was nothing as unique as the corner patisseries they found. Back in the United States, after spending four months on a fishing boat in Alaska, they packed up what Catherine called their "VW hippie bus" and drove to the Northwest and settled in Eugene.

Their mother, Patricia, helped with the new venture by aiding in the transformation of their small garage into a certified kitchen. For a year, the Reinhart sisters created cakes, muffins and brownies to satisfy the demand for quality desserts made of the finest ingredients. They sold their desserts to local stores and restaurants, and soon made a name for themselves.

The pastries also filled the need for dairy-free and egg-free options in Eugene. They have since added sugar-free and wheat-free options to their repertoire.

Towards the end of 1994, a friend asked the sisters to create a wedding cake for her impending nuptials. This cake led to their first bridal show, and soon the orders for wedding cakes began to pour in. That first year, they had to turn away over 20 weddings since they simply could not meet the demand. This success led to the sisters expanding into their current retail location and then to a renovated warehouse, just two blocks away, where all the baking is done.

One of the most notable things about the company is the satisfaction of their employees. When asked why she believes the employee retention rate is so high, Catherine said, "We're like a big rotating family. Even when someone leaves to travel the world, they are always welcome back. I love my employees. They're all talented, all amazing, all good people."

Two of her bakers recently filmed a Food Network special featuring their wedding cakes. That is set to air in June. Sweet Life was

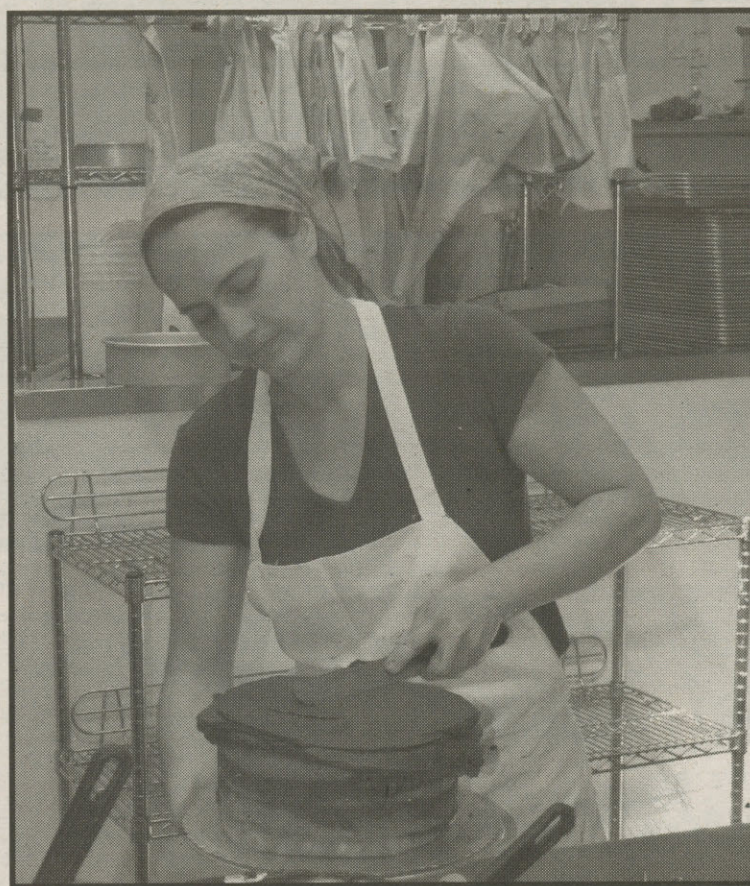


PHOTO BY LARRY COONROD

**Employee Leda Hermecz prepares a tiramisu cake in Sweet Life's kitchen. Sweet Life began in the owners' garage.**

also recently awarded a Lifetime Achievement honor by Eugene Weekly, an award that was created specially for the bakery after dominating the dessert categories for the last several years.

When asked about any further plans to expand, Catherine said, "There are no plans to franchise

out; I feel like we're finally hitting our stride, finally moving along."

However, Catherine did express a desire to add more outdoor seating and maybe eventually add a wine and beer tasting bar. But for now their focus is on making the organization as successful as possible and creating a

strong support system between all their ventures.

One such venture is Bliss Wedding Arts, which was created to handle the still growing demand for their unique wedding cakes. Bliss opened in October 2006. A longtime baker for Sweet Life, "Q" Regan focuses specifically on creating wedding cakes and managing Bliss.

When asked about the intended focus of Bliss, Regan said, "Bliss is supposed to function as a sort of library, a resource center if you will, for every budget." With local vendor cards and work on display, Bliss is well on its way to achieving its objective.

Located in Bliss are in-house showrooms for Out Of Hand Arts, Regan's customized invitation line and City Mouse Designs, a floral design company created in 2000 by freelance florist Renee Rocker. Regan hopes to move into full service event planning in the next two years, to fit budgets of all sizes.

The Sweet Life Patisserie is open Monday through Friday, 7 a.m. to 11 p.m., and Saturdays and Sundays from 8 a.m. to 11 p.m. They can also be reached at 683-5676. Bliss Wedding Arts, located at 775 Monroe Street, is open Tuesday through Saturday, 10 a.m. to 5 p.m. No appointment is necessary and they can be reached at 686-2633.

## 'Wii360station' — dream on game fanatics

*There's more than the eye can see*

**Whitney Johnson**  
A&E EDITOR

Should you Wii it up? Just how amazing is the Xbox 360? Is the Playstation 3 really as disappointing as some consumers have claimed? With all the options on the market, which system is the right one to buy? The bottom line seems to settle on what you're really looking for in a gaming console.

On November 19, 2006, Nintendo released the Wii gaming console. Even today, the innovative console is hard to find and purchase because of its high demand. Websites like eBay are constantly flooded with sellers, and there are still short waiting lists at some electronics stores.



A departure from the graphics-centric consoles of the Playstation 3 and Microsoft Xbox 360, the Wii's appeal stems from its affordability (retail \$249.99), and it's easy-to-play, fun and an engaging gaming experience.

"I love the Wii, we can play for hours," said Luke Triolo, a 26-year-old graduate student. "What's so awesome is the ability to get online and shop for the old school games I remember from the first incarnation of Nintendo." The Wii is Wi-Fi enabled, allowing it to connect to Nintendo's WiiConnect24.

WiiConnect24 is used by the gaming console to download updates and also has weather and news channels. The Wii also has a feature called Virtual Console, where users can download more Nintendo games. The only downside to the media aspect of the Wii is the marked absence of ability to play CDs and DVDs, a feature that has become stan-

dard on other gaming systems. Nintendo said like the GameCube before it, they have foregone this feature in order to keep the cost down.

The most intriguing part about the Wii however, is its new game controller, called the Wiimote. The Wiimote is a motion-sensing controller that makes the traditional cord-connected controller obsolete. Using the same Bluetooth connection technology as cell phones, the Wiimote connects wirelessly to the discreet sensor bar placed on top, on the side or under the television. There are also traditional controllers available and the Wii console is compatible with all GameCube controllers and games. The controller does suck up battery life like it's going out of style though, so be ready to spend money on AA batteries.

The Sony Playstation 3 is by far the most expensive gaming system on the market right now. Starting around \$600, it may come in an impressive package with High Definition resolution for games, but many consumers have found the system lacking

While the PS3 does come with a Blu-Ray drive for DVDs, and a maximum storage space of 60 GB, the system does not boast anything impressive in the initial game releases. "Why would I spend \$500 or \$600 on a fancy DVD player? If I'm going to shell out that kind of money for a system, I want some games that will hold my interest. At this rate, I'll just wait until its next version," said Nathan von Colditz, an Information Technology supervisor. "It's just been so disappointing. They [Sony] promised superior graphics, and while the ones they have are awesome, they don't transfer to the DVD player. I do kind of feel like they misrepresented the system a little bit."

The controller for the PS3 is similar to that of the PS2, the only difference being that the newer incarnation can go wireless just like the Wii controller, using the same Bluetooth pro-

ocol. It is also possible to play the system while recharging the controller through the console. Also, the PS3 controller has swapped the PS2 8-bit sensitivity Dual Shock for 10-bit motion sensitivity, making the vibrating and shaking of games past obsolete. Triolo said, "It feels like a cheap Wii rip-off. Sony couldn't come up with anything more creative?"

Something that the PS3 does have over the Wii however, is its extensive media package, which allows the user to view pictures, surf the Internet and listen to MP3's as well as play the aforementioned CDs and DVDs. The PS3 is set up for the Playstation Network, a system similar to that of the Xbox Live Ser-

vice. Both services allow users to use online gaming services and create chats and gaming communities.

The one system that seems to

SEE GAMES • PAGE 12





# Titans slide into second place

*Strong lineup is healthy and set to make run at division title*

**Alex Braga**  
ASSISTANT SPORTS EDITOR

Momentum is something usually best left to its own accord. The Lane baseball team is gaining momentum and is looking to ride it into contention for a league title.

The Titans won three of four games played last week to earn sole possession of second place in the Northwest Athletic Association of Community Colleges' Southern Division and put themselves into position to make a run at division-leading Mt. Hood Community College.

Lane (8-18, 5-3 in division) has used strong pitching and resurgent hitting—a result of the return of several players from pre-season injury—to win five of its last six games.

Scott Carpenter pitched 6 2/3 innings of 5-hit ball behind seven Titan runs in the second inning to earn his first league win and a 9-5 victory in the first game of Lane's doubleheader against Southwestern Oregon Community College on Tuesday, April 3.

"Scott didn't have his best stuff because he's still experiencing tightness in his shoulder," said Titans Head Coach, Rob Strickland, of his sophomore from Marshfield High School. "But he did what he needed to do to keep the other team down, which is the sign of a maturing pitcher."

Sophomore Russ Razor drove in three runs and freshmen Brian Rector and Dan Schlottman had two hits and two runs-scored apiece. Schlottman and sophomore Scott Jacobson each had two RBI in the Titans ninth-hit performance.

"They threw their number

two guy, who is a good college pitcher at our level and who usually handles us pretty well," Strickland said of SOCC's approach in the first game. "This time around he wasn't very sharp and we took advantage of it."

The Titans didn't fare as well in the second game of the doubleheader, losing on a walk-off two-run homerun, by SOCC sophomore Jon Griffin, with one out in the bottom of the ninth.

Jacobson toed the rubber for five strong innings, only surrendering five base runners and

low it. Luckily for both teams, and eventually only the Titans, Chemeketa had clear skies and a newly renovated stadium equipped with a fully functional lighting system.

The Titans jumped out to a 2-0 lead in the first inning and rode the pitching performance of right-hander Joaquin Lopez to a 7-2 win.

"Joaquin threw very well against Chemeketa," Strickland said of his sophomore from Springfield, who only gave up one earned run in 7 2/3 innings of 5-hit ball. "He got out of a couple of jams early in the game and those middle innings he just cruised. If he gets off to a good start he usually pitches well and

man Trevor Harrison back from injury just in time for the road trip and his impact was felt throughout the night's two games.

"He's definitely the best centerfielder we've ever had here," Strickland said. "With his speed and defensive ability there's no way he's not playing. We got some new life on Saturday with Trevor Harrison in the lineup."

The return of Harrison to center field means that Schlottman can move to left, and along with Razor in right, gives the Titans one of the more formidable defensive and offensive outfields in the entire NWAACC.

Lane sent its ace, Jesse Sweet, to the hill in the seven-inning second game against Chemeketa and he proved why he earned his title.

Sweet pitched a complete-game and struck out eight Storm batters in the process. Despite four errors behind him in the field, which caused all of Chemeketa's four unearned runs to come across, he earned his second league win.

"That's a great situation to be in, when you win the first game and you can throw your number one guy in the second game to try to win a doubleheader," Strickland said. "To his credit, he competed. He didn't really let the errors beat him. There was a couple times when I wanted to bring him out of the game and he basically looked at me and said 'no this is my game.' It was a real gutsy performance."

Thacker and Solders each finished with two hits for the Titans who scored five runs in the second inning.

**"He basically looked at me and said 'no this is my game.' It was a real gutsy performance."**

**•Rob Strickland**  
titans head coach

no earned runs. He gave way to Razor in the sixth-inning with the game tied at one.

"Scott did really good. His left hip was bothering him a little bit so I had to take him out," Strickland said. "I put Russ Razor in and he did a great job all the way until the two-run homer."

Jacobson finished three-for-three at the plate and freshman Jake Parham—who will miss some time with a dislocated knee, something Strickland said is "something that has happened before,"—finished one-for-three. Schlottman scored the Titans lone run of the game in the first inning on a Mat Solders single, but that was all Lane could do against SOCC ace Chad Lynch.

Lane looked to rebound from its tough loss to the Lakers, at home against Chemeketa, but Mother Nature wouldn't al-

low it. Luckily for both teams,

Freshman Eric Brown came in and pitched a flawless 1 1/3 innings to close the game out. He has established himself as the Titans closer and his play is something the Titans will rely on if they are to make a push in league.

"He'll give up a run here-or-there, but he's staying away from those big innings, which has been critical for a relief guy," Strickland said of his pitcher from Churchill High School. "He really has shown that he deserves to be in that role."

Solders, Jacobson and sophomore second baseman Brian Thacker all finished with two hits to go along with three by Razor. But it was the return of Lane's centerfielder that will give the Titans a long-term boost.

Lane welcomed fresh-

## GAME RESULTS

### LANE 9 • SOUTHWESTERN OREGON 5

	AB	R	H	BI	BB	SO
Schlottman (cf)	3	2	2	2	1	0
Ausland (lf)	4	1	1	0	0	1
Jacobson (1b)	4	0	1	2	0	1
Solders (dh)	4	1	0	0	0	1
Razor (rf)	5	0	1	3	0	0
Nading (3b)	3	1	0	0	1	1
Parham (ss)	3	1	1	0	1	1
Rector (c)	4	2	2	1	0	0
Thacker (2b)	3	1	1	0	0	0
<b>Totals</b>	<b>33</b>	<b>9</b>	<b>9</b>	<b>8</b>	<b>3</b>	<b>5</b>
<b>LANE SOCC</b>	<b>070</b>	<b>100</b>	<b>010</b>	<b>•</b>	<b>9</b>	<b>9</b>
	<b>001</b>	<b>100</b>	<b>201</b>	<b>•</b>	<b>5</b>	<b>6</b>
	<b>IP</b>	<b>H</b>	<b>R</b>	<b>ER</b>	<b>BB</b>	<b>SO</b>
Carpenter (W)	6 2/3	5	4	3	3	4
Brown	2 1/3	1	1	1	1	2

### LANE 1 • SOUTHWESTERN OREGON 3

	AB	R	H	BI	BB	SO
Schlottman (cf)	4	1	1	0	0	2
Leclaire (2b)	3	0	0	0	0	1
Jacobson (p)	3	0	3	0	0	0
Solders (1b)	4	0	0	1	0	0
Razor (rf)	2	0	0	0	1	1
Nading (3b)	3	0	0	0	0	1
Ausland (lf)	3	0	0	0	0	1
Parham (ss)	3	0	1	0	0	2
Rector (c)	1	0	0	0	1	0
<b>Totals</b>	<b>26</b>	<b>1</b>	<b>5</b>	<b>1</b>	<b>2</b>	<b>8</b>
<b>LANE SOCC</b>	<b>100</b>	<b>000</b>	<b>000</b>	<b>•</b>	<b>1</b>	<b>5</b>
	<b>010</b>	<b>000</b>	<b>002</b>	<b>•</b>	<b>3</b>	<b>8</b>
	<b>IP</b>	<b>H</b>	<b>R</b>	<b>ER</b>	<b>BB</b>	<b>SO</b>
Jacobson	5	5	1	0	0	3
Razor (L)	3 1/3	3	2	2	2	4

### LANE 7 • CHEMEKETA 2

	AB	R	H	BI	BB	SO
Schlottman (lf)	3	1	0	0	2	0
Thacker (2b)	5	2	2	0	0	1
Jacobson (1b)	5	1	2	2	0	2
Razor (rf)	5	1	3	1	0	0
Solders (dh)	5	0	2	2	0	2
Nading (3b)	3	1	1	1	1	0
Parham (ss)	4	0	1	0	0	2
Rector (c)	4	0	0	0	0	2
Harrison (cf)	3	1	0	0	1	0
<b>Totals</b>	<b>37</b>	<b>7</b>	<b>11</b>	<b>6</b>	<b>4</b>	<b>9</b>
<b>LANE CHEMEKETA</b>	<b>200</b>	<b>110</b>	<b>300</b>	<b>•</b>	<b>7</b>	<b>11</b>
	<b>100</b>	<b>000</b>	<b>010</b>	<b>•</b>	<b>2</b>	<b>5</b>
	<b>IP</b>	<b>H</b>	<b>R</b>	<b>ER</b>	<b>BB</b>	<b>SO</b>
Lopez (W)	7 2/3	5	2	1	4	5
Brown	1 1/3	0	0	0	0	2

### LANE 5 • CHEMEKETA 4 (7-INNING)

	AB	R	H	BI	BB	SO
Harrison (cf)	4	0	1	1	0	0
Schlottman (lf)	3	0	1	1	1	0
Jacobson (1b)	3	0	0	1	0	1
Solders (dh)	4	1	2	0	0	1
Razor (rf)	3	1	0	0	0	1
Ausland (3b)	3	0	0	0	0	1
Nading (ss)	2	1	1	0	1	1
Rector (c)	2	1	1	1	1	0
Thacker (2b)	3	1	2	1	0	0
<b>Totals</b>	<b>27</b>	<b>5</b>	<b>8</b>	<b>5</b>	<b>3</b>	<b>5</b>
<b>LANE CHEMEKETA</b>	<b>050</b>	<b>000</b>	<b>0</b>	<b>•</b>	<b>5</b>	<b>8</b>
	<b>003</b>	<b>010</b>	<b>0</b>	<b>•</b>	<b>4</b>	<b>6</b>
	<b>IP</b>	<b>H</b>	<b>R</b>	<b>ER</b>	<b>BB</b>	<b>SO</b>
Sweet (W)	7	6	4	0	1	8

## 2007 league stats (through eight games)

### BATTING REPORT

Player	AB	R	H	BI	BB	SO	AVG
Carter Cullen	2	2	1	0	1	1	.500
Dan Schlottman	28	9	13	7	6	3	.464
Scott Jacobson	28	4	12	7	2	6	.429
Russ Razor	29	4	8	4	2	3	.276
Brian Rector	22	4	6	5	3	3	.273
Jake Parham	23	2	6	0	2	8	.261
Ricardo Leclaire	4	1	1	1	0	1	.250
Mat Solders	32	2	8	7	0	5	.250
Hayden Ausland	26	1	6	2	1	8	.231
Brian Thacker	22	5	5	1	0	3	.227
Nick Nading	27	6	6	1	3	8	.222
Trevor Harrison	7	1	1	1	1	0	.143
Corey Smith	0	1	0	0	0	0	0.00
Mark Bavaro	0	0	0	1	1	0	0.00

### PITCHING REPORT

Player	IP	R	ER	BB	SO	HITS	W	L	S	ERA
Jesse Sweet	15 1/3	7	2	2	16	15	2	0	0	1.17
Joaquin Lopez	14	6	1	6	8	10	1	0	0	0.64
Scott Carpenter	12	7	4	6	7	12	1	1	0	3.00
Scott Jacobson	11	8	4	0	4	15	0	1	0	3.27
Eric Brown	7 1/3	6	2	1	8	7	1	0	1	2.45
Russ Razor	4 1/3	2	2	2	4	4	0	1	0	4.15
Brett Swett	1	0	0	0	0	3	0	0	1	0.00

## Baseball NWAACC Southern Division Standings

As of April 9

Team	League	Overall
MHCC	7-1	14-5
LANE	5-3	8-18
SOCC	4-4	15-12
CLACKAMAS	3-3	10-7
CHEMEKETA	4-5	12-10
LBCC	3-6	12-12





# Track star lives life on the run

*McNamara's career in running leads to records at Lane*

**Josh Hutchins**  
SPORTS EDITOR

Jordan McNamara grew up in Auburn, Wash. a small city about a half hour south of Seattle. He played soccer until he was about 13-years-old and then got seriously interested in running. He started track about the seventh grade and cross country his freshman year of high school.

"I remember my freshman year of high school, my first run was an eight mile run. I tried to hang with the top guys and ended up just getting my butt kicked, jogging it in with the coach," McNamara said. "I don't think I ran for a week after that, I was so sore I could barely walk around. It was definitely a little bit tough mentally, but like all things you get better and you get used to it."

McNamara was this fall's Northwest Athletic Association of Community College's cross country champion. This spring as a redshirt freshman in track, he now holds the school record in the 5,000m and is second place on the all-time list for the 1,500m.

"I had a rough summer. I got a stress fracture in my foot and was forced to take five weeks off actually starting the week I got down here," McNamara said. "So everyone is at training camp the first few days getting to know each other and they're going on their runs. I'm going into the 50 degree water at Lake Odell to swim."

After that McNamara said he was able to cross-train pretty hard and bounce back. Going on to win the regional meet and then the NWAACC meet, he was pretty happy with the contribution he made to the team.

In cross country, they run the 8K and 10K, in track his events are the 1,500m, the 5,000m and the 10,000m runs.

Out of high school McNamara attended the University of Washington. "I decided to transfer to the UO, I wasn't happy with my running up in Seattle," McNamara said. "I've got to sit a year due to Pac-10 eligibility rules and while I do that I got in touch with the coach here, Ross Krempley, for distances."

"He said 'why not come to Lane, we'll give you some money to go to school and while you sit your year out, you can compete for us. Get ready for UO and hopefully have a healthy year.'"

McNamara is a freshman in track as far as eligibility, a sophomore for cross country and a sophomore academically. He's cur-

rently taking 15 hours with the major of exercise science, which he said right now mostly consists of general studies classes. Last quarter his grade point average was 3.4. He'd like to do something in the future with physical therapy or something involving athletics like coaching.

"As far as running is concerned, Eugene's a great place, the community is so active," McNamara said. "I remember coming down here for visits and everywhere I looked people would be biking, or running, or doing some sort of activity."

"I really liked that. As far as the scenery, there's so many beautiful trails to run on. After being up in Seattle where all you did was run in crowded neighborhoods, dodging cars, playing chicken with them."

McNamara lives with two other distance runners on the team. Joe Churchill and Craig Kochis. Churchill is from his hometown and Kochis he met here. "Sometimes me and the guys will go up to this place called Ridgeline," McNamara said. "It's a pretty brutal place to run, but it's definitely a lot of fun to get out and really enjoy the environment."

When he's not run-

ing around a group that shares his interests in running and competing.

Track and Field Director, Grady O'Connor, said that they have to be careful with training McNamara in order to keep him healthy and injury free. McNamara said that mostly it's been the stress fractures that have held him back from running. But he's also had Achilles tendonitis and planar fasciitis to go with small strains. He did redshirt his freshman year for indoor and outdoor track seasons

because he was suffering from ane-

mia and a stress fracture in his femur.

Now and then he will be tempted to take it easy. "Sometimes I've got to hit a certain number of miles per week, usually about 70 or so. To do that you can't really take too many days off," McNamara said. "Sometimes there'll be times when I'll look outside and it's raining and I'll be like man, I really don't want to go run 10 miles right now. I'm tired and just want to go take a nap."

"But in the end it's something that I really love doing, so it's not as hard of work as many people think. Distance running is the kind of sport where you don't really take too much time off because you can lose fitness pretty quickly and it can take a long time to get it back."

When he's racing he tries to concentrate on staying smooth and relaxed until that last lap. Then he said he usually gets angry. "You definitely have got to have some demons in you to really light some people up."

His favorite athletes are Hicham El Guerrouj, the world record holder in the mile and Haile Gebresalassie, the former world record holder in the 5K and 10K.

"Just wanted to give credit to my coach, Ross Krempley and the track and field team's Head Coach Grady O'Connor," McNamara said. "Thanks to my girlfriend and my teammates for their support and hard work along the way."

ning he's usually spending time with his girlfriend, Rachel Salsbery. She runs track as well and her events are the 800m and 1,500m. He added that he likes to play ping pong with his roommate and just spend time with the guys on the team. He likes be-

## McNamara at a glance

- **Redshirt freshman**
- **NWAACC cross country champion**
- **School record in 5,000 meter run**
- **2nd all-time mark for Lane in 1,500 meter run**



## Men's and women's track teams 2-0 after dual meet

### McNamara sets school record in 5,000m run at Stanford

Josh Hutchins  
SPORTS EDITOR

The Titans' track and field team met Mt. Hood and Clark Community Colleges in a dual meet Saturday, March 31. The Lane women beat Clark 108-56, and edged out a strong Mt. Hood team 92-77.

"Mt. Hood's women gave us a pretty good battle until the end," said Director of Track and Field, Grady O'Connor. "Our depth, the fact that we did have two ladies in every event, overcame a few of their stronger athletes' individual performances."

Whitney Harris won the javelin and qualified for the Northwest Athletic Association of Community Colleges' Championship Meet. She holds the school record for javelin. Crystal Bradford qualified in the high hurdles, and placed first in the event for Lane's team with her

time of 16.20. Erika Stratton took home another first place finish in the pole vault. Charlene Moody took third place in the shot put, second in the discus and first place in the hammer throw. She earned qualifying marks in two of the three events.

#### More Female NWAACC qualifiers

**Kate Gallagher**  
400 Meter Hurdles 1:08.90

**Women's Relay Team**  
4 x 100 Meter 50.79

**Sara DeBit**  
Pole Vault 10-00

**Whitney Harris**  
Javelin Throw 136-11.5

Lane's men beat Clark 121-39 and Mt. Hood 97-79. The men dominated, winning 10 of the 16 events contested. Jason Metzger won the shot put, discus and hammer throws. Travis Thompson won the 200m and 400m races with personal bests in both and a NWAACC qualifying mark in the 400m with his time of 48.69.

John Randall scored a first place finish in the 800m with his time of 1:56.88, which was good enough to qualify for the championships. The Titan men

took four of the top-five spots in the pole vault. Darryl Evans, Collin Cram, Sam Helland and Jayce Giddens all qualified for the championships in that event as well.

#### More Male NWAACC qualifiers

**Collin Cram**  
110 Meter Hurdles 15.68

"It's one of those few opportunities that we get to have a scoring format, other than our championship meet," O'Connor said. "So I feel really good about it, just that we have accomplished getting the athletes experience competing under those conditions."

With the arrival of Spring term, Lane's roster now has 30 men and 24 women with a couple more hopefuls. Only 25 are allowed in a championship format. O'Connor said the teams have good depth.

#### Stanford Invitational

In his first race in a Titan uniform, Jordan McNamara, broke a 29-year-old school record in the 5,000m at the Stanford Invitational Saturday, March 31. The Stanford Meet drew elite

athletes from across the United States, Canada and as far away as China. McNamara is a red-shirt freshman who won the NWAACC cross-country title in the fall. His new record for the 5,000m is 14:09.01. The previous record, held by Ken Martin and Dave Magness, was 14:22.44. "Ken Martin went to the U of O after (Lane) and was on national championship teams over there," O'Connor said. "He was a solid runner, he currently holds their 10K record."

#### Oregon Preview

The Oregon Preview, a kick-off event for the outdoor season, welcomed a mix of collegiate and post-collegiate talent. It took place Saturday, March 17.

"The Oregon Preview, it was a terrific day," O'Connor said. "We had limited athletes in uniform, but knowing the program we had every event filled with either former Lane athletes, or current Lane athletes or current Lane unattached athletes. So it was a really busy day, a fun day just to see the alumni athletes competing for whether it be the U of O, or Portland State."

Erika Stratton set a new school record in the pole vault with a mark of 11-7.75. Before this she was tied for the record with two other athletes at 11-6. Collin Cram placed fifth in the 110m hurdles with a time of 15.18.

John Randall, an unattached athlete for Lane won the "B" heat for the 800m with a time of 1:56.48.

Distance Coach Ross Krempley participating for Team XO came in third place in the 800m with a time of 1:51.58.

The men's 4x400m relay team also qualified for the NWAACC Championships finishing fourth behind the Oregon A team, Team XO and the Oregon B team. Their time was 3:22.46. The team is composed of Kelly Thompson handing off to Matt Fitzgerald, handing off to Collin Cram, handing off to Travis Thompson.

Thompson also finished fourth place in the 400m behind three Oregon athletes, two who are alumni from Lane.

Sergio Jones, running as an unattached athlete for Lane, won the 100m with a time of 10.85.

## Titans get 15 NWAACC-qualified at Willamette Invitational

Josh Hutchins  
SPORTS EDITOR

The Lane Track and Field team traveled to Salem last Friday and Saturday for the Willamette Invitational. "It was a good meet and we were able to see most of the league schools at this one," Director of Track and Field, Grady O'Connor said. "It's going to be a very competitive year. The league is much improved and pretty deep. Numbers are up and Spokane once again looks like the team to beat for both men and women."

Jordan McNamara missed setting back-to-back school records two weeks in a row by three seconds in the 1,500m. As it is, he's now second all-time for LCC in the 1,500m. He's leading the Northwest Athletic Association of Community Colleges easily coach O'Connor said.

Travis Thompson beat 28 other entries to win the 400m, he has already qualified for the NWAACC Championships.

#### Male NWAACC Qualifiers

**Kelly Thompson**  
400 Meters (Personal Best) 49.79

**Jordan McNamara**  
1,500 Meters 3:48.45

**Craig Kochis**  
1,500 Meters (Personal Best) 4:03.65

**Dustin Moore**

5,000 Meters 15:54.56

**Matt Fitzgerald**  
110 Meter Hurdles 15.65

**Dan Stowers**  
110 Meter Hurdles 15.86

**Sam Helland**  
Pole Vault 14-08

**Men's Relay Team**  
4 X 100 42.62

#### Female NWAACC Qualifiers

**Heather Bishop**  
100 Meters 12.60

**Kori Wilgus**  
400 Meters 1:02.75

**Toma Starodebtseva**  
5,000 Meters 20:10.75

**Nikkie Gledhill**  
10,000 Meters 44:32.07

**Crystal Bradford**  
100 Meter Hurdles (Personal Best) 15.81

**Angela Rear**  
100 Meter Hurdles 16.29

**LeAsia Jones**  
Shot Put 34-07.50

The Titans are overall very healthy this year. "We have one kid, A.J. Dutra, that hasn't jumped yet for us and he's got a bad hamstring," O'Connor said. "Tara Krempley, a distance runner, has a stress fracture, but we've known that for a few weeks now."

This weekend the teams go back to Salem for a four-way, non-scoring meet. The competition will come from Portland State, Southern Oregon University, Clackamas and Willamette.

### McNamara just misses second school record

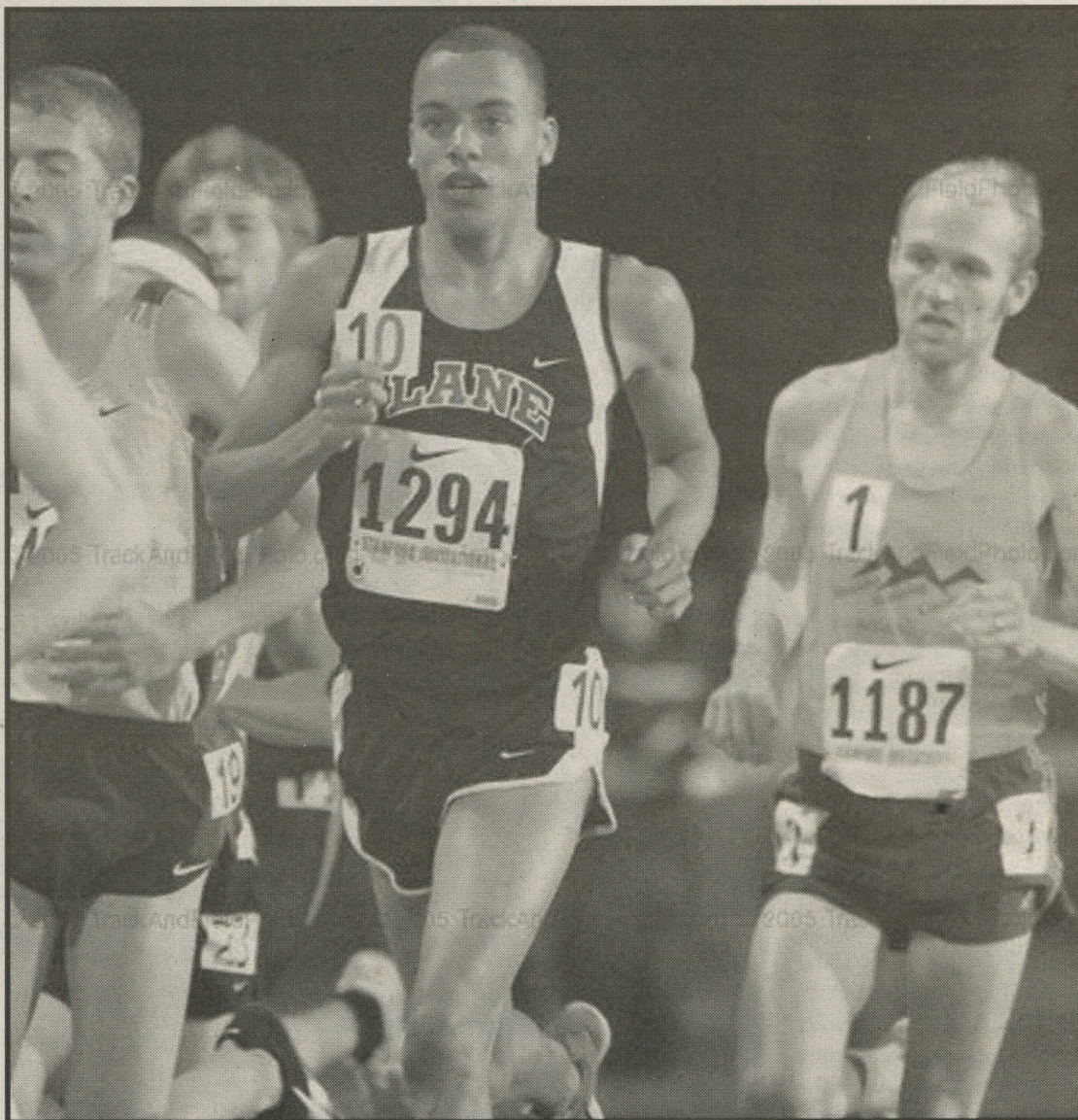
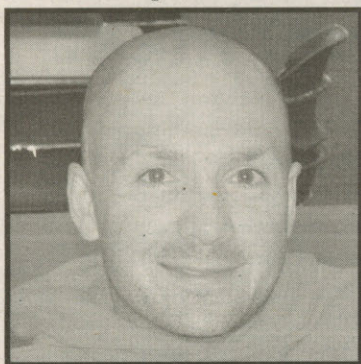


PHOTO COURTESY OF TRACK AND FIELD PHOTO MAGAZINE AND GRADY O'CONNOR

Jordan McNamara in his record setting Stanford invitational race.



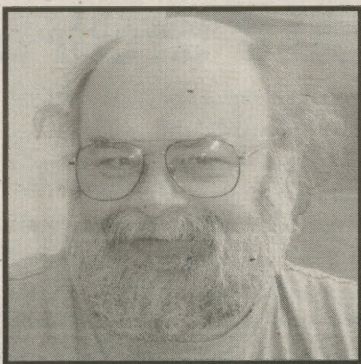
**"Do you think the captured British soldiers should be allowed to sell their personal stories for profit?"**



**Dan Ziller**

AVIATION MAINTENANCE

"Unfortunate as it is, I'd say yes because everyone else profits from biographies and whatnot."



**Richard Weber**

UNDECIDED

"I don't see any reason to forbid it. I don't see any grounds for stopping it."



**Rob Dow**

POLITICAL SCIENCE

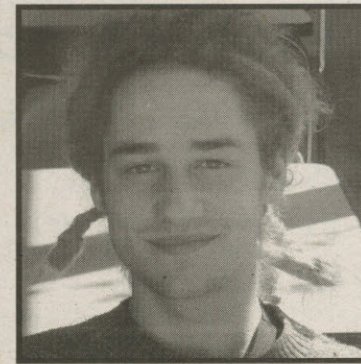
"Since we're a bunch of capitalists then that's what they've gotta do."



**Sharon Hagan**

DENTAL HYGIENE

"I guess I would say no. They were working for the government at the time."



**Aaron Nelson**

UNDECIDED

"Yes, because those experiences are their own experiences and they should do what they want with it."

Compiled by Ariel Burkhardt  
Photos by Sandy Wilcox

## Games From Page 8

be a universal crowd pleaser is the Microsoft Xbox 360. Beginning with a Microsoft supported foundation, this new console straddles the fence on whether it's a PC gamer's dream or a console lover's saving grace. Created with this ability in mind, one can forgive the less than stellar DVD player and droning exhaust fan.

The Xbox 360 is the first gaming console to really venture out and dominate the media package world of gaming consoles. With the inception of Xbox Live, Microsoft has moved itself into the forefront of innovation in this arena. The online gaming community has become vital to the Xbox's success and the 360 does not disappoint. Free movie trailers, demos for games and extra gaming content has become available.

It also has the ability to play and/or view any piece of media compatible with Windows, and has been built to cater to the HDTV set, while not forgetting those who still have regular TVs.

The 360's backwards compatibility also allows for the over 500 Xbox games, already currently released, to be played on the 360. Basically, Microsoft put together a super powerful computer that takes the cake on graphics and all around enjoyment. It also has wireless controllers and has really hit its stride the second time around. And for \$299, that's something to appreciate.

To sum it up, von Colditz said, "All my nerdy gaming buddies are obsessed with the Xbox 360. Its got better games, better graphics and a better all around vibe."



**this  
summer...**

**OSU**  
Oregon State  
UNIVERSITY

Extended Campus

**catch up. speed up. jump ahead.**

- Choose from three, four, eight or 11-week sessions
- Stay on track for graduation
- Complete a prerequisite or bacc core requirement
- Finish a full 3-course sequence in one summer
- Enjoy smaller class sizes
- Save! Everyone pays in-state tuition

**Schedule of classes now available online at  
summer.oregonstate.edu**

Need a flexible schedule? Explore the variety of courses offered online.  
Classes start June 25th

**summer.session@oregonstate.edu or call 541.737.1470**